



wwPDB X-ray Structure Validation Summary Report ⓘ

Mar 6, 2026 – 11:02 AM UTC

PDB ID : 4D35 / pdb_00004d35
Title : Structure of bovine endothelial nitric oxide synthase heme domain in complex with N-2-(2-(1H-imidazol-1-yl)pyrimidin-4-yl)ethyl-3-(3-fluorophenyl)propan-1-amine
Authors : Li, H.; Poulos, T.L.
Deposited on : 2014-10-20
Resolution : 2.18 Å(reported)

This is a wwPDB X-ray Structure Validation Summary Report for a publicly released PDB entry.

We welcome your comments at validation@mail.wwpdb.org

A user guide is available at

<https://www.wwpdb.org/validation/2017/XrayValidationReportHelp>

with specific help available everywhere you see the ⓘ symbol.

The types of validation reports are described at

<http://www.wwpdb.org/validation/2017/FAQs#types>.

The following versions of software and data (see [references ⓘ](#)) were used in the production of this report:

MolProbity : 4-5-2 with Phenix2.0
Mogul : 2022.3.0, CSD as543be (2022)
Xtrriage (Phenix) : 2.0
EDS : 3.0
Buster-report : wwPDB partial adaption of 1.1.7 (2018)
Percentile statistics : 20250101.v01 (using entries in the PDB archive January 1st 2025)
CCP4 : 9.0.010 (Gargrove)
Density-Fitness : 1.0.12
Ideal geometry (proteins) : Engh & Huber (2001)
Ideal geometry (DNA, RNA) : Parkinson et al. (1996)
Validation Pipeline (wwPDB-VP) : 2.49

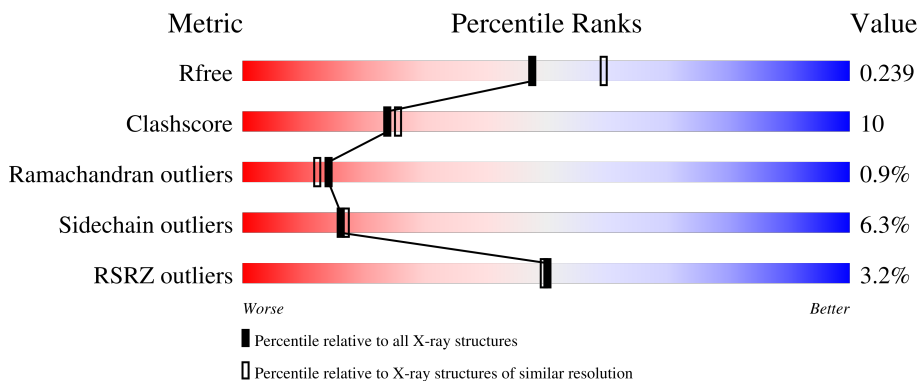
1 Overall quality at a glance

The following experimental techniques were used to determine the structure:

X-RAY DIFFRACTION

The reported resolution of this entry is 2.18 Å.

Percentile scores (ranging between 0-100) for global validation metrics of the entry are shown in the following graphic. The table shows the number of entries on which the scores are based.



Metric	Whole archive (#Entries)	Similar resolution (#Entries, resolution range(Å))
R_{free}	180053	8975 (2.20-2.16)
Clashscore	190562	9786 (2.20-2.16)
Ramachandran outliers	187476	9664 (2.20-2.16)
Sidechain outliers	187428	9664 (2.20-2.16)
RSRZ outliers	180081	8979 (2.20-2.16)

The table below summarises the geometric issues observed across the polymeric chains and their fit to the electron density. The red, orange, yellow and green segments of the lower bar indicate the fraction of residues that contain outliers for ≥ 3 , 2, 1 and 0 types of geometric quality criteria respectively. A grey segment represents the fraction of residues that are not modelled. The numeric value for each fraction is indicated below the corresponding segment, with a dot representing fractions $\leq 5\%$. The upper red bar (where present) indicates the fraction of residues that have poor fit to the electron density. The numeric value is given above the bar.

Mol	Chain	Length	Quality of chain
1	A	443	 3% 70% 19% 9%
1	B	443	 3% 69% 19% 9%

2 Entry composition [i](#)

There are 8 unique types of molecules in this entry. The entry contains 6844 atoms, of which 0 are hydrogens and 0 are deuteriums.

In the tables below, the ZeroOcc column contains the number of atoms modelled with zero occupancy, the AltConf column contains the number of residues with at least one atom in alternate conformation and the Trace column contains the number of residues modelled with at most 2 atoms.

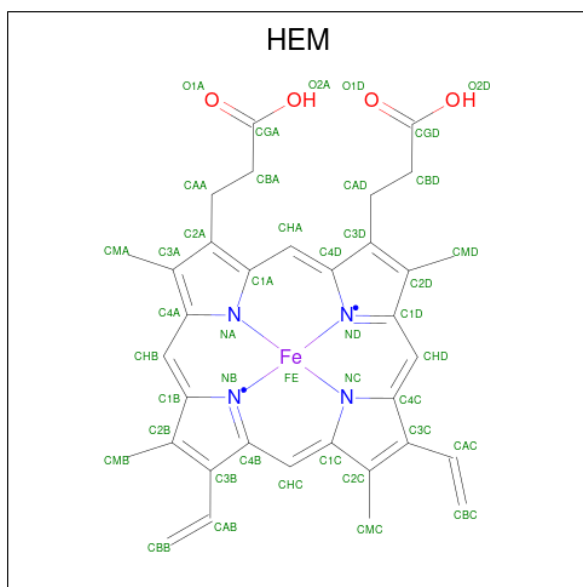
- Molecule 1 is a protein called NITRIC OXIDE SYNTHASE, ENDOTHELIAL.

Mol	Chain	Residues	Atoms					ZeroOcc	AltConf	Trace	
			Total	As	C	N	O				S
1	A	405	3223	1	2049	568	589	16	0	0	0
1	B	405	3229	1	2054	569	589	16	0	0	0

There are 2 discrepancies between the modelled and reference sequences:

Chain	Residue	Modelled	Actual	Comment	Reference
A	100	ARG	CYS	conflict	UNP P29473
B	100	ARG	CYS	conflict	UNP P29473

- Molecule 2 is PROTOPORPHYRIN IX CONTAINING FE (CCD ID: HEM) (formula: $C_{34}H_{32}FeN_4O_4$).



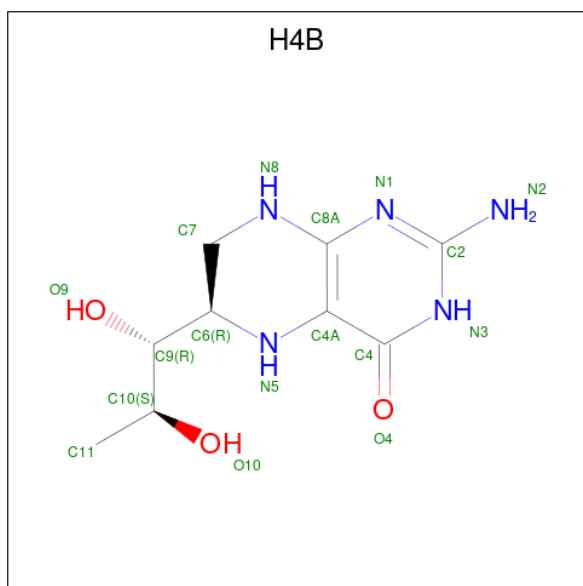
Mol	Chain	Residues	Atoms				ZeroOcc	AltConf	
			Total	C	Fe	N			O
2	A	1	43	34	1	4	4	0	0

Continued on next page...

Continued from previous page...

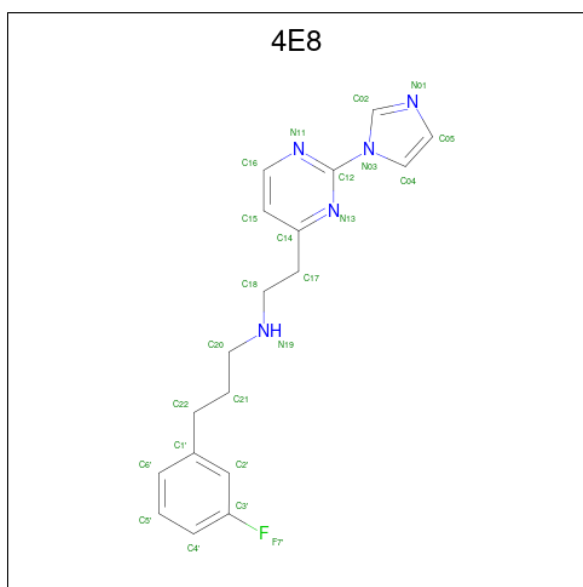
Mol	Chain	Residues	Atoms				ZeroOcc	AltConf	
			Total	C	Fe	N			O
2	B	1	43	34	1	4	4	0	0

- Molecule 3 is 5,6,7,8-TETRAHYDROBIOPTERIN (CCD ID: H4B) (formula: $C_9H_{15}N_5O_3$).



Mol	Chain	Residues	Atoms				ZeroOcc	AltConf
			Total	C	N	O		
3	A	1	17	9	5	3	0	0
3	B	1	17	9	5	3	0	0

- Molecule 4 is 3-(3-fluorophenyl)-N-{2-[2-(1H-imidazol-1-yl)pyrimidin-4-yl]ethyl}propan-1-amine (CCD ID: 4E8) (formula: $C_{18}H_{20}FN_5$).



Mol	Chain	Residues	Atoms				ZeroOcc	AltConf
			Total	C	F	N		
4	A	1	24	18	1	5	0	0
4	B	1	24	18	1	5	0	0

- Molecule 5 is ACETATE ION (CCD ID: ACT) (formula: C₂H₃O₂⁻).



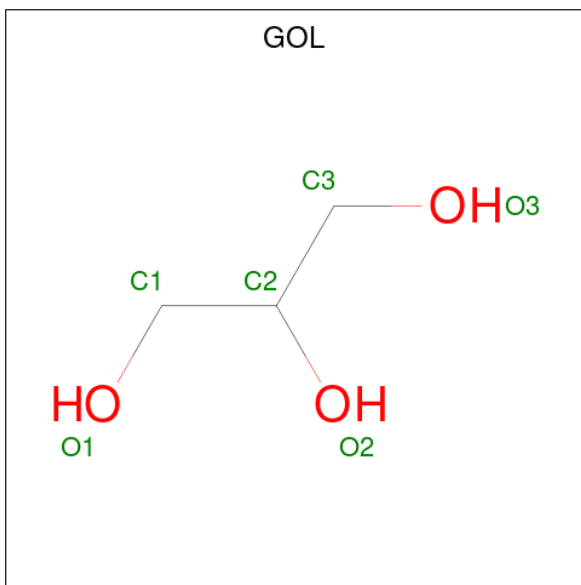
Mol	Chain	Residues	Atoms			ZeroOcc	AltConf
			Total	C	O		
5	A	1	4	2	2	0	0
5	A	1	4	2	2	0	0

Continued on next page...

Continued from previous page...

Mol	Chain	Residues	Atoms	ZeroOcc	AltConf
5	B	1	Total C O 4 2 2	0	0
5	B	1	Total C O 4 2 2	0	0

- Molecule 6 is GLYCEROL (CCD ID: GOL) (formula: C₃H₈O₃).



Mol	Chain	Residues	Atoms	ZeroOcc	AltConf
6	A	1	Total C O 6 3 3	0	0
6	B	1	Total C O 6 3 3	0	0

- Molecule 7 is ZINC ION (CCD ID: ZN) (formula: Zn).

Mol	Chain	Residues	Atoms	ZeroOcc	AltConf
7	A	1	Total Zn 1 1	0	0

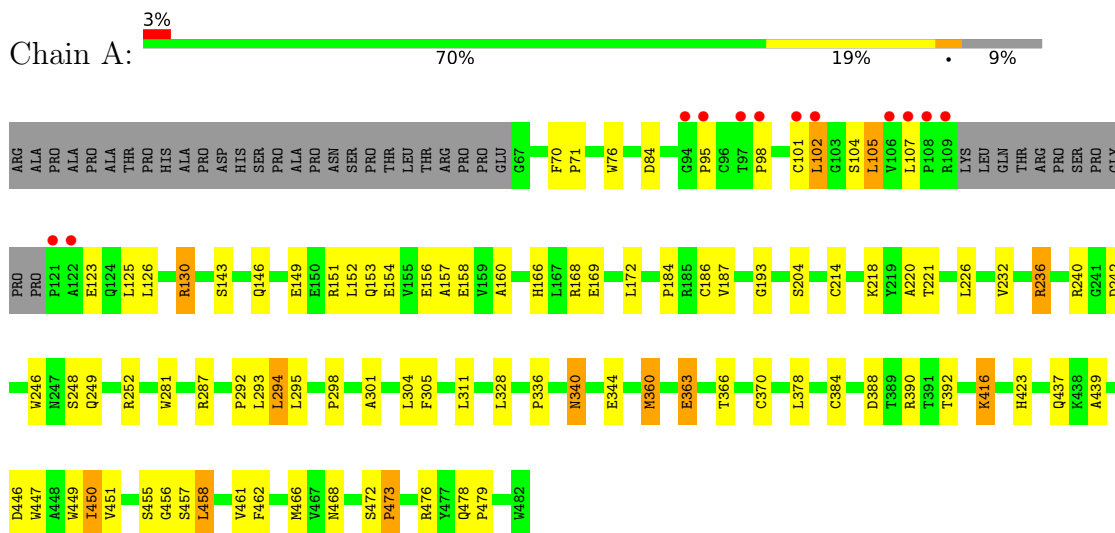
- Molecule 8 is water.

Mol	Chain	Residues	Atoms	ZeroOcc	AltConf
8	A	126	Total O 126 126	0	0
8	B	69	Total O 69 69	0	0

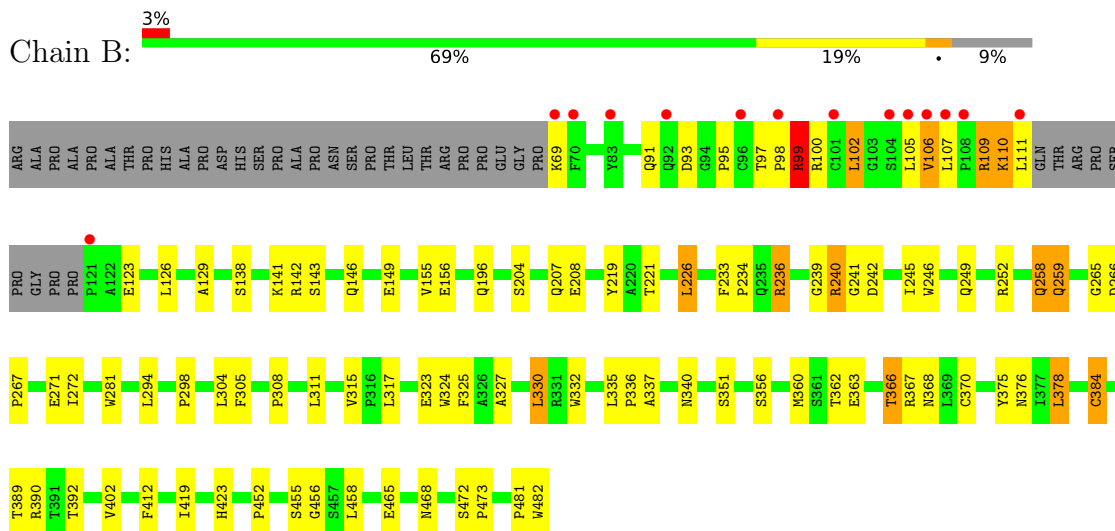
3 Residue-property plots [i](#)

These plots are drawn for all protein, RNA, DNA and oligosaccharide chains in the entry. The first graphic for a chain summarises the proportions of the various outlier classes displayed in the second graphic. The second graphic shows the sequence view annotated by issues in geometry and electron density. Residues are color-coded according to the number of geometric quality criteria for which they contain at least one outlier: green = 0, yellow = 1, orange = 2 and red = 3 or more. A red dot above a residue indicates a poor fit to the electron density ($RSRZ > 2$). Stretches of 2 or more consecutive residues without any outlier are shown as a green connector. Residues present in the sample, but not in the model, are shown in grey.

- Molecule 1: NITRIC OXIDE SYNTHASE, ENDOTHELIAL



- Molecule 1: NITRIC OXIDE SYNTHASE, ENDOTHELIAL



4 Data and refinement statistics

Property	Value	Source
Space group	P 21 21 21	Depositor
Cell constants a, b, c, α , β , γ	57.63Å 105.90Å 156.95Å 90.00° 90.00° 90.00°	Depositor
Resolution (Å)	87.78 – 2.18 87.78 – 2.18	Depositor EDS
% Data completeness (in resolution range)	98.5 (87.78-2.18) 99.0 (87.78-2.18)	Depositor EDS
R_{merge}	0.07	Depositor
R_{sym}	(Not available)	Depositor
$\langle I/\sigma(I) \rangle$ ¹	1.52 (at 2.18Å)	Xtrriage
Refinement program	REFMAC 5.8.0049	Depositor
R, R_{free}	0.186 , 0.240 0.185 , 0.239	Depositor DCC
R_{free} test set	2518 reflections (4.98%)	wwPDB-VP
Wilson B-factor (Å ²)	42.1	Xtrriage
Anisotropy	0.374	Xtrriage
Bulk solvent k_{sol} (e/Å ³), B_{sol} (Å ²)	0.36 , 42.2	EDS
L-test for twinning ²	$\langle L \rangle = 0.47$, $\langle L^2 \rangle = 0.30$	Xtrriage
Estimated twinning fraction	No twinning to report.	Xtrriage
F_o, F_c correlation	0.97	EDS
Total number of atoms	6844	wwPDB-VP
Average B, all atoms (Å ²)	51.0	wwPDB-VP

Xtrriage's analysis on translational NCS is as follows: *The largest off-origin peak in the Patterson function is 3.60% of the height of the origin peak. No significant pseudotranslation is detected.*

¹Intensities estimated from amplitudes.

²Theoretical values of $\langle |L| \rangle$, $\langle L^2 \rangle$ for acentric reflections are 0.5, 0.333 respectively for untwinned datasets, and 0.375, 0.2 for perfectly twinned datasets.

5 Model quality [i](#)

5.1 Standard geometry [i](#)

Bond lengths and bond angles in the following residue types are not validated in this section: H4B, GOL, CAS, ACT, 4E8, HEM, ZN

The Z score for a bond length (or angle) is the number of standard deviations the observed value is removed from the expected value. A bond length (or angle) with $|Z| > 5$ is considered an outlier worth inspection. RMSZ is the root-mean-square of all Z scores of the bond lengths (or angles).

Mol	Chain	Bond lengths		Bond angles	
		RMSZ	# Z >5	RMSZ	# Z >5
1	A	1.10	1/3303 (0.0%)	1.18	8/4497 (0.2%)
1	B	1.02	1/3308 (0.0%)	1.13	12/4502 (0.3%)
All	All	1.06	2/6611 (0.0%)	1.15	20/8999 (0.2%)

Chiral center outliers are detected by calculating the chiral volume of a chiral center and verifying if the center is modelled as a planar moiety or with the opposite hand. A planarity outlier is detected by checking planarity of atoms in a peptide group, atoms in a mainchain group or atoms of a sidechain that are expected to be planar.

Mol	Chain	#Chirality outliers	#Planarity outliers
1	B	0	1

All (2) bond length outliers are listed below:

Mol	Chain	Res	Type	Atoms	Z	Observed(Å)	Ideal(Å)
1	A	193	GLY	C-O	-5.59	1.18	1.24
1	B	366	THR	C-O	-5.06	1.18	1.24

The worst 5 of 20 bond angle outliers are listed below:

Mol	Chain	Res	Type	Atoms	Z	Observed(°)	Ideal(°)
1	B	245	ILE	N-CA-C	-6.95	98.45	108.17
1	A	301	ALA	CA-C-N	-6.56	113.54	120.03
1	A	301	ALA	C-N-CA	-6.56	113.54	120.03
1	B	106	VAL	N-CA-C	6.46	116.62	110.42
1	B	363	GLU	N-CA-C	-6.39	104.31	111.28

There are no chirality outliers.

All (1) planarity outliers are listed below:

Mol	Chain	Res	Type	Group
1	B	239	GLY	Peptide

5.2 Too-close contacts

In the following table, the Non-H and H(model) columns list the number of non-hydrogen atoms and hydrogen atoms in the chain respectively. The H(added) column lists the number of hydrogen atoms added and optimized by MolProbity. The Clashes column lists the number of clashes within the asymmetric unit, whereas Symm-Clashes lists symmetry-related clashes.

Mol	Chain	Non-H	H(model)	H(added)	Clashes	Symm-Clashes
1	A	3223	0	3129	63	0
1	B	3229	0	3142	64	0
2	A	43	0	30	7	0
2	B	43	0	30	6	0
3	A	17	0	15	1	0
3	B	17	0	15	1	0
4	A	24	0	20	1	0
4	B	24	0	20	6	0
5	A	8	0	6	0	0
5	B	8	0	6	0	0
6	A	6	0	8	0	0
6	B	6	0	8	3	0
7	A	1	0	0	0	0
8	A	126	0	0	9	0
8	B	69	0	0	3	0
All	All	6844	0	6429	132	0

The all-atom clashscore is defined as the number of clashes found per 1000 atoms (including hydrogen atoms). The all-atom clashscore for this structure is 10.

The worst 5 of 132 close contacts within the same asymmetric unit are listed below, sorted by their clash magnitude.

Atom-1	Atom-2	Interatomic distance (Å)	Clash overlap (Å)
1:B:384:CAS:SG	1:B:384:CAS:AS	2.69	1.11
1:A:236:ARG:HH11	1:A:236:ARG:HG3	1.16	1.04
1:A:240:ARG:HD3	1:A:298:PRO:HB3	1.49	0.94
1:A:236:ARG:HG3	1:A:236:ARG:NH1	1.74	0.94
1:A:236:ARG:HH11	1:A:236:ARG:CG	1.90	0.84

There are no symmetry-related clashes.

5.3 Torsion angles [i](#)

5.3.1 Protein backbone [i](#)

In the following table, the Percentiles column shows the percent Ramachandran outliers of the chain as a percentile score with respect to all X-ray entries followed by that with respect to entries of similar resolution.

The Analysed column shows the number of residues for which the backbone conformation was analysed, and the total number of residues.

Mol	Chain	Analysed	Favoured	Allowed	Outliers	Percentiles	
1	A	400/443 (90%)	380 (95%)	18 (4%)	2 (0%)	24	25
1	B	400/443 (90%)	377 (94%)	18 (4%)	5 (1%)	9	7
All	All	800/886 (90%)	757 (95%)	36 (4%)	7 (1%)	14	12

5 of 7 Ramachandran outliers are listed below:

Mol	Chain	Res	Type
1	A	456	GLY
1	B	109	ARG
1	B	259	GLN
1	B	110	LYS
1	B	456	GLY

5.3.2 Protein sidechains [i](#)

In the following table, the Percentiles column shows the percent sidechain outliers of the chain as a percentile score with respect to all X-ray entries followed by that with respect to entries of similar resolution.

The Analysed column shows the number of residues for which the sidechain conformation was analysed, and the total number of residues.

Mol	Chain	Analysed	Rotameric	Outliers	Percentiles	
1	A	343/375 (92%)	322 (94%)	21 (6%)	17	18
1	B	344/375 (92%)	322 (94%)	22 (6%)	16	16
All	All	687/750 (92%)	644 (94%)	43 (6%)	16	17

5 of 43 residues with a non-rotameric sidechain are listed below:

Mol	Chain	Res	Type
1	B	123	GLU

Continued on next page...

Continued from previous page...

Mol	Chain	Res	Type
1	B	259	GLN
1	B	141	LYS
1	B	236	ARG
1	B	323	GLU

Sometimes sidechains can be flipped to improve hydrogen bonding and reduce clashes. 5 of 17 such sidechains are listed below:

Mol	Chain	Res	Type
1	B	376	ASN
1	B	478	GLN
1	A	478	GLN
1	B	91	GLN
1	B	222	ASN

5.3.3 RNA [i](#)

There are no RNA molecules in this entry.

5.4 Non-standard residues in protein, DNA, RNA chains [i](#)

2 non-standard protein/DNA/RNA residues are modelled in this entry.

In the following table, the Counts columns list the number of bonds (or angles) for which Mogul statistics could be retrieved, the number of bonds (or angles) that are observed in the model and the number of bonds (or angles) that are defined in the Chemical Component Dictionary. The Link column lists molecule types, if any, to which the group is linked. The Z score for a bond length (or angle) is the number of standard deviations the observed value is removed from the expected value. A bond length (or angle) with $|Z| > 2$ is considered an outlier worth inspection. RMSZ is the root-mean-square of all Z scores of the bond lengths (or angles).

Mol	Type	Chain	Res	Link	Bond lengths			Bond angles		
					Counts	RMSZ	$\# Z > 2$	Counts	RMSZ	$\# Z > 2$
1	CAS	B	384	1	5,8,9	1.42	1 (20%)	1,9,11	1.38	0
1	CAS	A	384	1	5,8,9	1.58	1 (20%)	1,9,11	0.98	0

In the following table, the Chirals column lists the number of chiral outliers, the number of chiral centers analysed, the number of these observed in the model and the number defined in the Chemical Component Dictionary. Similar counts are reported in the Torsion and Rings columns. '-' means no outliers of that kind were identified.

Mol	Type	Chain	Res	Link	Chirals	Torsions	Rings
1	CAS	B	384	1	-	0/0/7/9	-
1	CAS	A	384	1	-	0/0/7/9	-

All (2) bond length outliers are listed below:

Mol	Chain	Res	Type	Atoms	Z	Observed(Å)	Ideal(Å)
1	A	384	CAS	AS-CE1	3.40	2.05	1.96
1	B	384	CAS	AS-CE1	2.17	2.01	1.96

There are no bond angle outliers.

There are no chirality outliers.

There are no torsion outliers.

There are no ring outliers.

1 monomer is involved in 2 short contacts:

Mol	Chain	Res	Type	Clashes	Symm-Clashes
1	B	384	CAS	2	0

5.5 Carbohydrates [i](#)

There are no oligosaccharides in this entry.

5.6 Ligand geometry [i](#)

Of 13 ligands modelled in this entry, 1 is monoatomic - leaving 12 for Mogul analysis.

In the following table, the Counts columns list the number of bonds (or angles) for which Mogul statistics could be retrieved, the number of bonds (or angles) that are observed in the model and the number of bonds (or angles) that are defined in the Chemical Component Dictionary. The Link column lists molecule types, if any, to which the group is linked. The Z score for a bond length (or angle) is the number of standard deviations the observed value is removed from the expected value. A bond length (or angle) with $|Z| > 2$ is considered an outlier worth inspection. RMSZ is the root-mean-square of all Z scores of the bond lengths (or angles).

Mol	Type	Chain	Res	Link	Bond lengths			Bond angles		
					Counts	RMSZ	$\# Z > 2$	Counts	RMSZ	$\# Z > 2$
5	ACT	B	861	-	3,3,3	1.28	0	3,3,3	0.24	0
5	ACT	B	860	-	3,3,3	0.93	0	3,3,3	0.52	0
6	GOL	A	880	-	5,5,5	0.27	0	5,5,5	1.52	2 (40%)
4	4E8	A	800	2	26,26,26	1.12	2 (7%)	32,33,33	3.01	13 (40%)

Mol	Type	Chain	Res	Link	Bond lengths			Bond angles		
					Counts	RMSZ	# Z > 2	Counts	RMSZ	# Z > 2
2	HEM	B	500	1,4	50,50,50	1.69	10 (20%)	67,82,82	1.81	15 (22%)
3	H4B	A	600	-	17,18,18	1.05	2 (11%)	14,26,26	1.95	6 (42%)
2	HEM	A	500	1,4	50,50,50	1.49	5 (10%)	67,82,82	2.14	22 (32%)
6	GOL	B	880	-	5,5,5	0.39	0	5,5,5	0.83	0
4	4E8	B	800	2	26,26,26	1.15	3 (11%)	32,33,33	2.83	10 (31%)
5	ACT	A	860	-	3,3,3	0.86	0	3,3,3	0.84	0
5	ACT	A	861	-	3,3,3	0.93	0	3,3,3	2.07	2 (66%)
3	H4B	B	600	-	17,18,18	1.01	1 (5%)	14,26,26	1.94	6 (42%)

In the following table, the Chirals column lists the number of chiral outliers, the number of chiral centers analysed, the number of these observed in the model and the number defined in the Chemical Component Dictionary. Similar counts are reported in the Torsion and Rings columns. '-' means no outliers of that kind were identified.

Mol	Type	Chain	Res	Link	Chirals	Torsions	Rings
6	GOL	A	880	-	-	0/4/4/4	-
4	4E8	A	800	2	-	4/13/13/13	0/3/3/3
2	HEM	B	500	1,4	-	2/14/54/54	-
3	H4B	A	600	-	-	0/8/17/17	0/2/2/2
2	HEM	A	500	1,4	-	2/14/54/54	-
6	GOL	B	880	-	-	0/4/4/4	-
4	4E8	B	800	2	-	1/13/13/13	0/3/3/3
3	H4B	B	600	-	-	1/8/17/17	0/2/2/2

The worst 5 of 23 bond length outliers are listed below:

Mol	Chain	Res	Type	Atoms	Z	Observed(Å)	Ideal(Å)
2	A	500	HEM	C1B-NB	-4.73	1.32	1.40
2	B	500	HEM	FE-NB	4.70	2.09	1.94
2	B	500	HEM	FE-NC	4.43	2.09	1.95
2	A	500	HEM	FE-NC	3.78	2.07	1.95
2	A	500	HEM	FE-ND	-3.37	1.84	1.94

The worst 5 of 76 bond angle outliers are listed below:

Mol	Chain	Res	Type	Atoms	Z	Observed(°)	Ideal(°)
4	B	800	4E8	C12-N13-C14	7.63	121.32	115.23
2	A	500	HEM	CHC-C4B-NB	6.98	131.94	124.42
4	A	800	4E8	N11-C12-N13	-6.84	119.16	126.12
4	A	800	4E8	C12-N13-C14	6.62	120.52	115.23

Continued on next page...

Continued from previous page...

Mol	Chain	Res	Type	Atoms	Z	Observed($^{\circ}$)	Ideal($^{\circ}$)
4	A	800	4E8	N11-C12-N03	6.44	118.50	115.11

There are no chirality outliers.

5 of 10 torsion outliers are listed below:

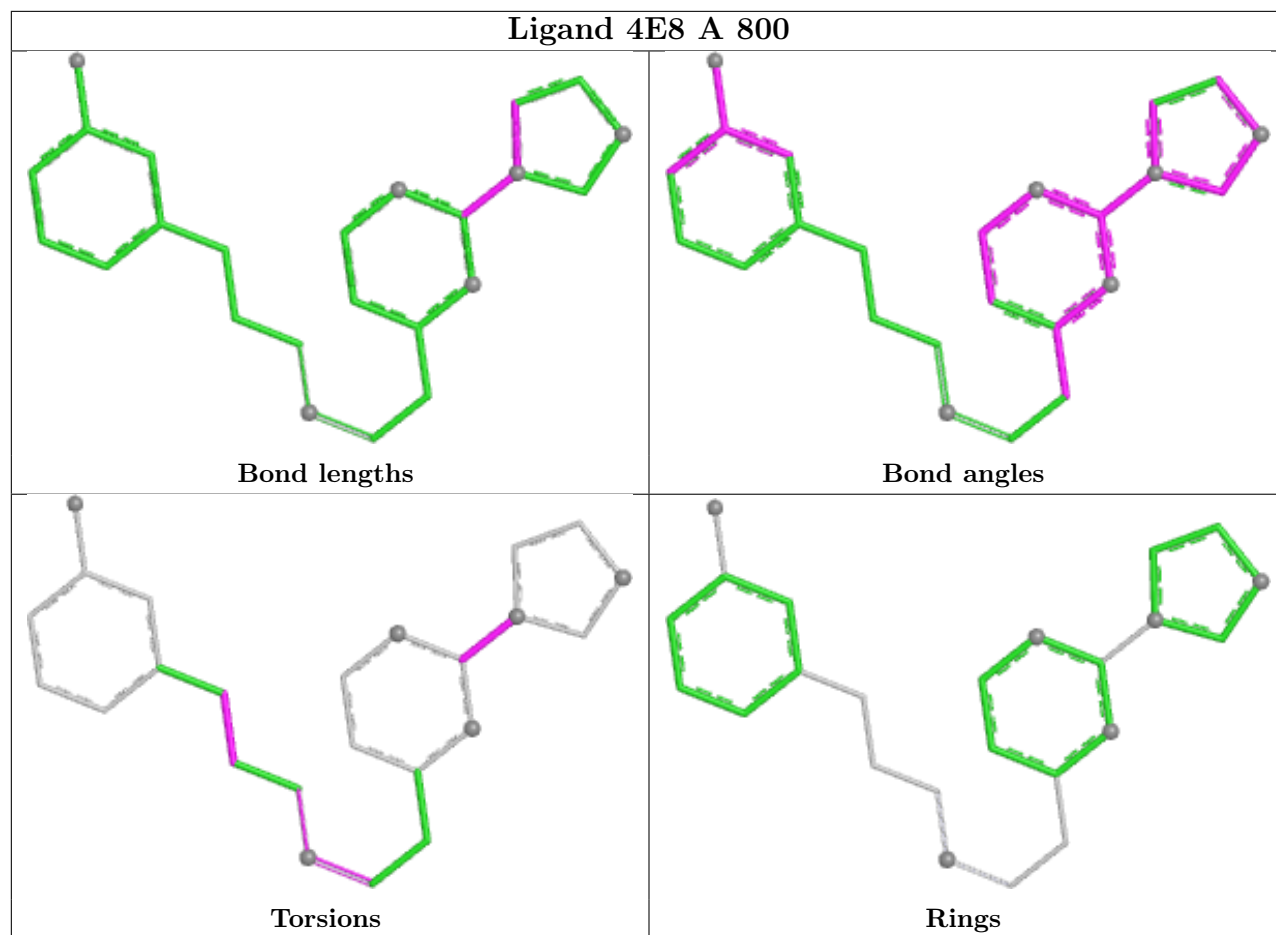
Mol	Chain	Res	Type	Atoms
4	A	800	4E8	C21-C20-N19-C18
4	A	800	4E8	C20-C21-C22-C1'
4	B	800	4E8	C21-C20-N19-C18
4	A	800	4E8	C17-C18-N19-C20
4	A	800	4E8	N11-C12-N03-C02

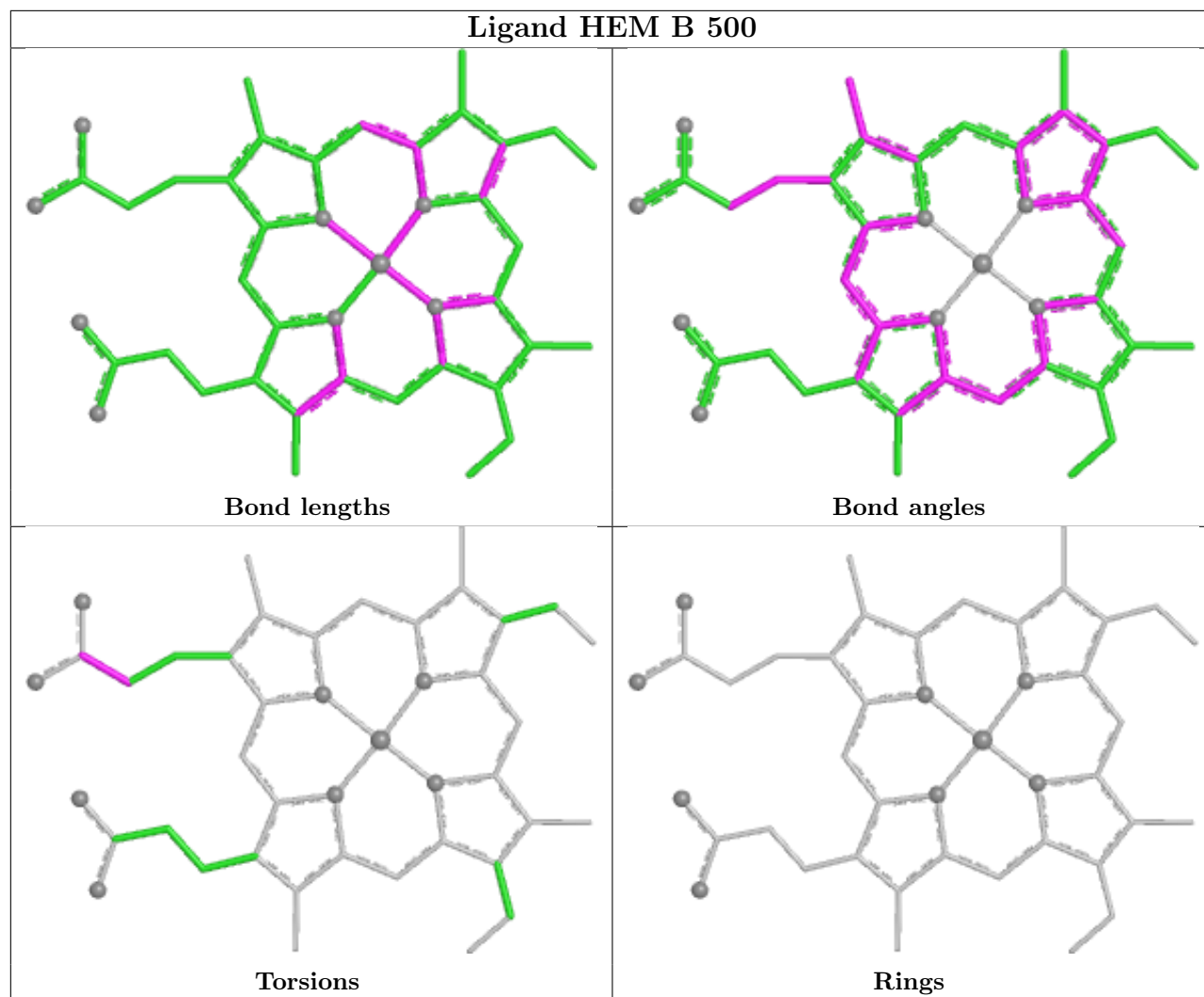
There are no ring outliers.

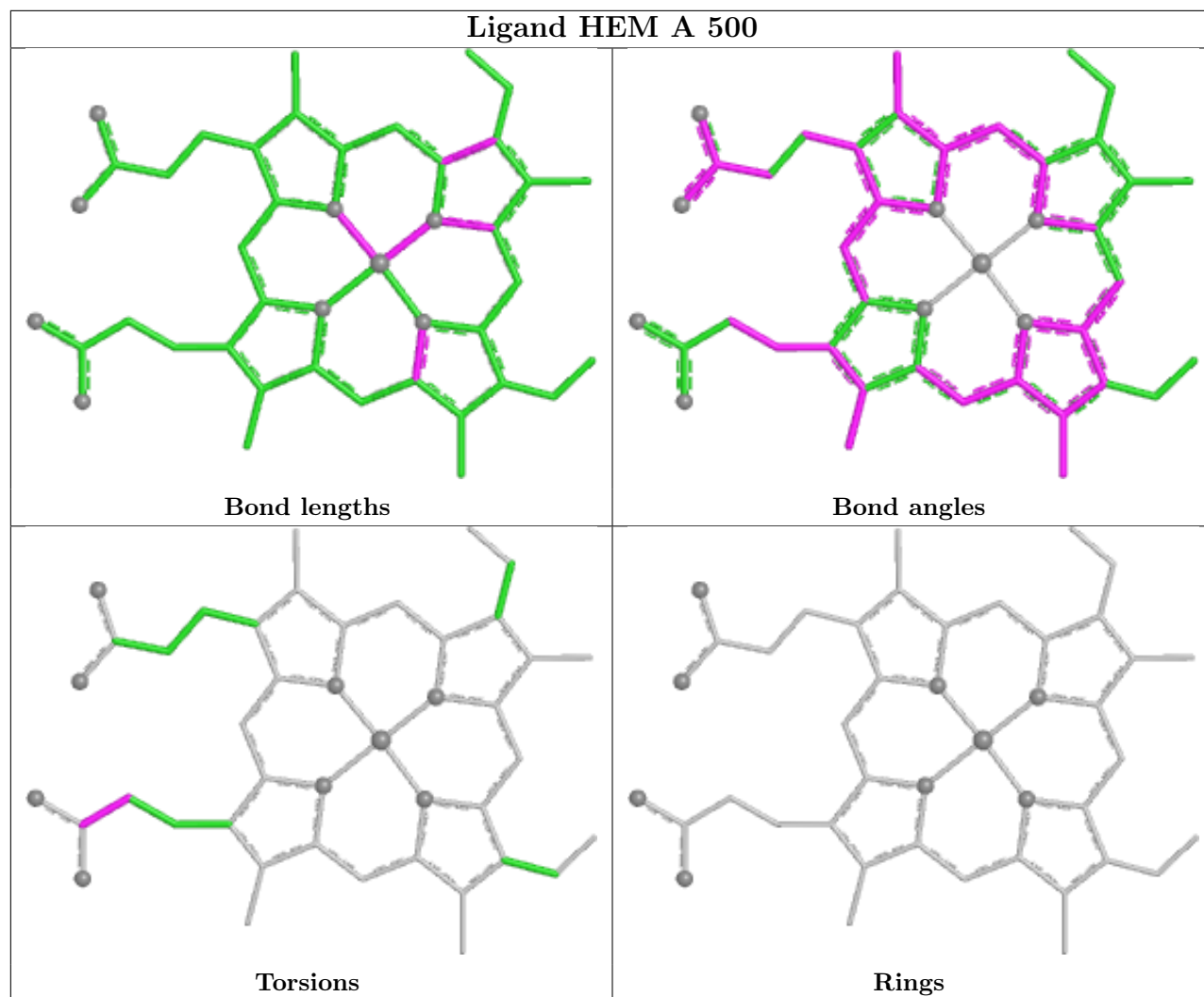
7 monomers are involved in 19 short contacts:

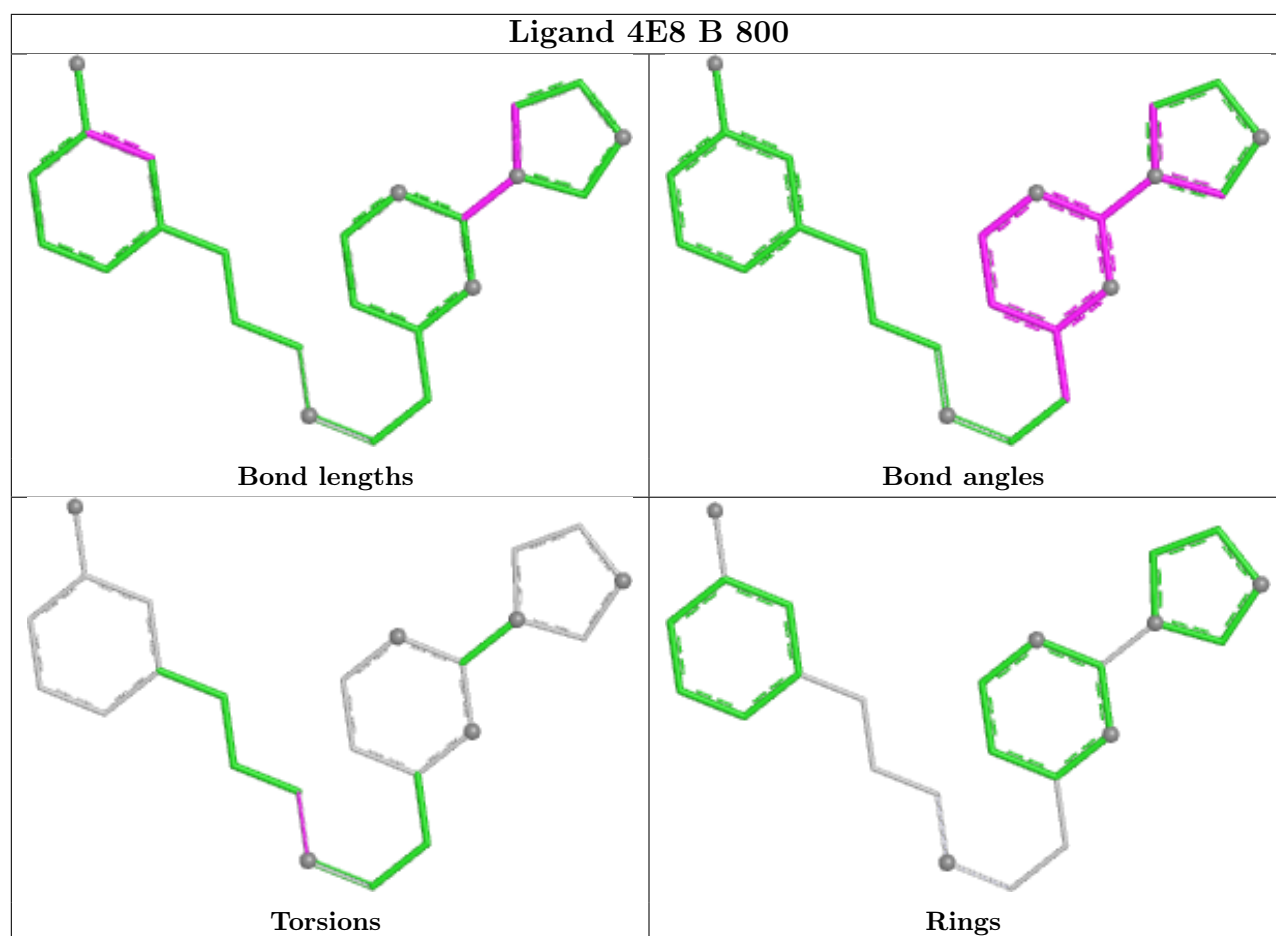
Mol	Chain	Res	Type	Clashes	Symm-Clashes
4	A	800	4E8	1	0
2	B	500	HEM	6	0
3	A	600	H4B	1	0
2	A	500	HEM	7	0
6	B	880	GOL	3	0
4	B	800	4E8	6	0
3	B	600	H4B	1	0

The following is a two-dimensional graphical depiction of Mogul quality analysis of bond lengths, bond angles, torsion angles, and ring geometry for all instances of the Ligand of Interest. In addition, ligands with molecular weight > 250 and outliers as shown on the validation Tables will also be included. For torsion angles, if less than 5% of the Mogul distribution of torsion angles is within 10 degrees of the torsion angle in question, then that torsion angle is considered an outlier. Any bond that is central to one or more torsion angles identified as an outlier by Mogul will be highlighted in the graph. For rings, the root-mean-square deviation (RMSD) between the ring in question and similar rings identified by Mogul is calculated over all ring torsion angles. If the average RMSD is greater than 60 degrees and the minimal RMSD between the ring in question and any Mogul-identified rings is also greater than 60 degrees, then that ring is considered an outlier. The outliers are highlighted in purple. The color gray indicates Mogul did not find sufficient equivalents in the CSD to analyse the geometry.









5.7 Other polymers [i](#)

There are no such residues in this entry.

5.8 Polymer linkage issues [i](#)

There are no chain breaks in this entry.

6 Fit of model and data [i](#)

6.1 Protein, DNA and RNA chains [i](#)

In the following table, the column labelled ‘#RSRZ > 2’ contains the number (and percentage) of RSRZ outliers, followed by percent RSRZ outliers for the chain as percentile scores relative to all X-ray entries and entries of similar resolution. The OWAB column contains the minimum, median, 95th percentile and maximum values of the occupancy-weighted average B-factor per residue. The column labelled ‘Q < 0.9’ lists the number of (and percentage) of residues with an average occupancy less than 0.9.

Mol	Chain	Analysed	<RSRZ>	#RSRZ>2	OWAB(Å ²)	Q<0.9
1	A	404/443 (91%)	-0.30	12 (2%) 52 52	31, 44, 87, 131	0
1	B	404/443 (91%)	-0.16	14 (3%) 47 46	30, 49, 91, 128	0
All	All	808/886 (91%)	-0.23	26 (3%) 50 49	30, 46, 90, 131	0

The worst 5 of 26 RSRZ outliers are listed below:

Mol	Chain	Res	Type	RSRZ
1	B	111	LEU	4.2
1	B	108	PRO	4.1
1	A	107	LEU	3.8
1	B	106	VAL	3.7
1	A	101	CYS	3.6

6.2 Non-standard residues in protein, DNA, RNA chains [i](#)

In the following table, the Atoms column lists the number of modelled atoms in the group and the number defined in the chemical component dictionary. The B-factors column lists the minimum, median, 95th percentile and maximum values of B factors of atoms in the group. The column labelled ‘Q < 0.9’ lists the number of atoms with occupancy less than 0.9.

Mol	Type	Chain	Res	Atoms	RSCC	RSR	B-factors(Å ²)	Q<0.9
1	CAS	B	384	9/10	0.92	0.11	56,59,77,104	0
1	CAS	A	384	9/10	0.95	0.09	41,42,60,86	0

6.3 Carbohydrates [i](#)

There are no oligosaccharides in this entry.

6.4 Ligands

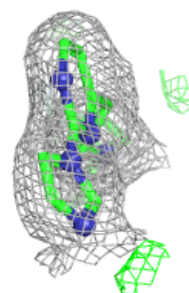
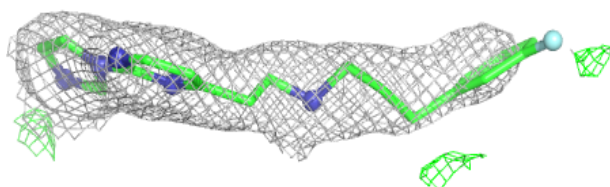
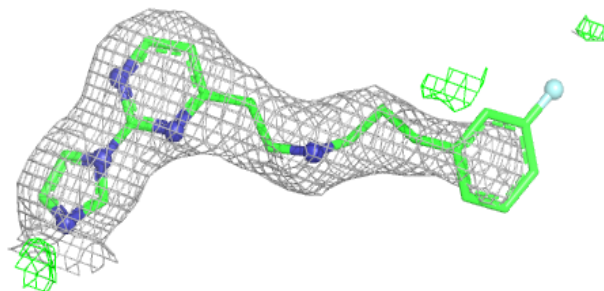
In the following table, the Atoms column lists the number of modelled atoms in the group and the number defined in the chemical component dictionary. The B-factors column lists the minimum, median, 95th percentile and maximum values of B factors of atoms in the group. The column labelled 'Q< 0.9' lists the number of atoms with occupancy less than 0.9.

Mol	Type	Chain	Res	Atoms	RSCC	RSR	B-factors(Å ²)	Q<0.9
5	ACT	B	861	4/4	0.67	0.22	60,68,70,74	0
5	ACT	A	861	4/4	0.83	0.16	46,47,60,60	0
6	GOL	B	880	6/6	0.84	0.14	60,70,75,76	0
6	GOL	A	880	6/6	0.86	0.13	60,76,78,78	0
5	ACT	B	860	4/4	0.95	0.12	60,60,62,69	0
4	4E8	A	800	24/24	0.95	0.10	37,44,122,126	0
5	ACT	A	860	4/4	0.95	0.09	53,53,55,56	0
3	H4B	B	600	17/17	0.95	0.07	44,50,54,54	0
3	H4B	A	600	17/17	0.96	0.06	38,45,52,52	0
4	4E8	B	800	24/24	0.96	0.11	27,42,117,119	0
7	ZN	A	900	1/1	0.97	0.14	84,84,84,84	0
2	HEM	B	500	43/43	0.99	0.06	33,39,47,68	0
2	HEM	A	500	43/43	0.99	0.05	25,32,50,55	0

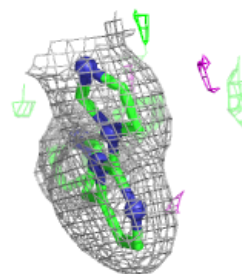
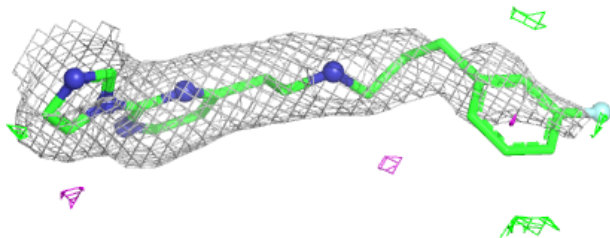
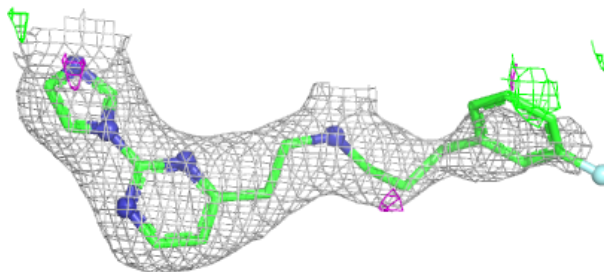
The following is a graphical depiction of the model fit to experimental electron density of all instances of the Ligand of Interest. In addition, ligands with molecular weight > 250 and outliers as shown on the geometry validation Tables will also be included. Each fit is shown from different orientation to approximate a three-dimensional view.

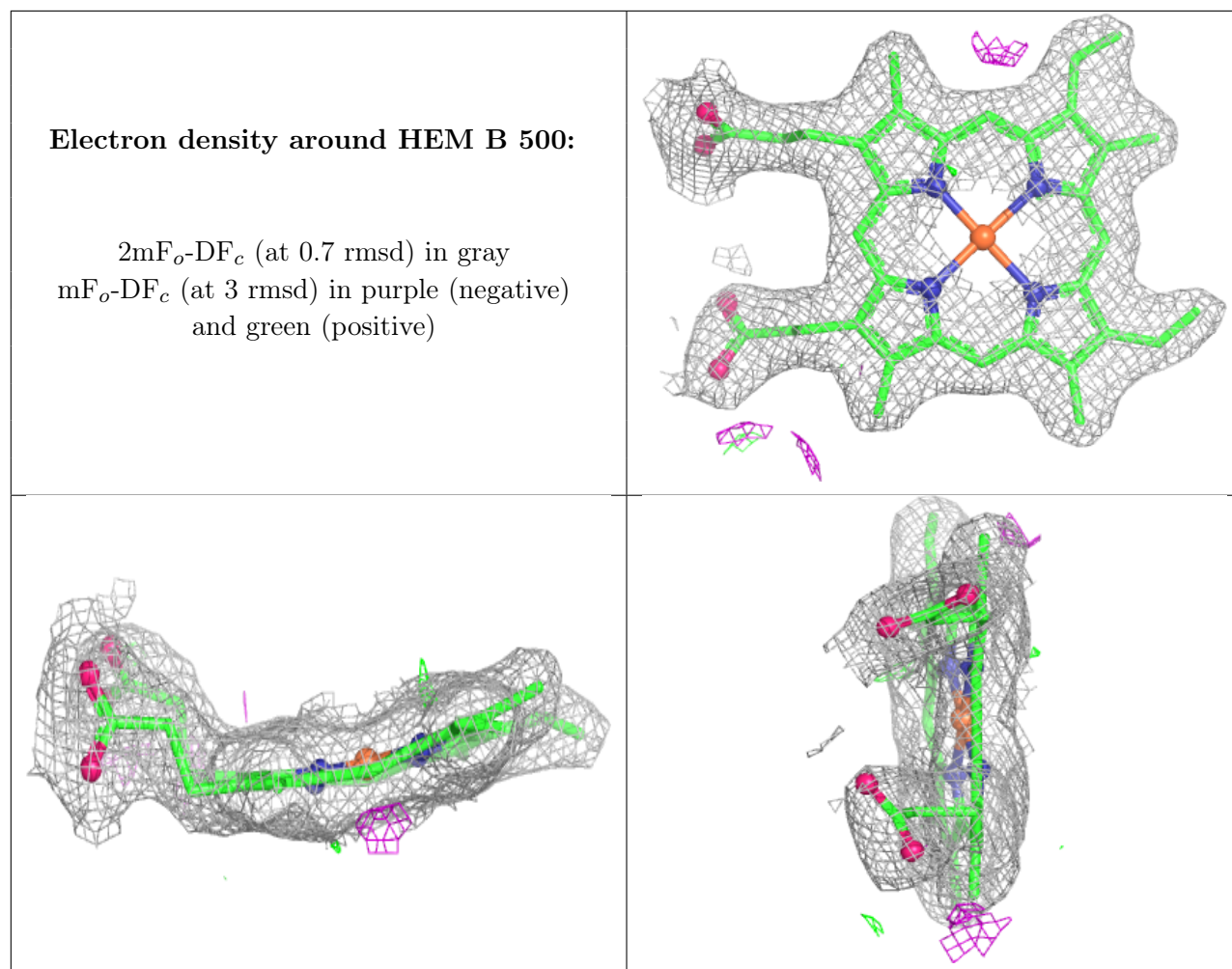
Electron density around 4E8 A 800:

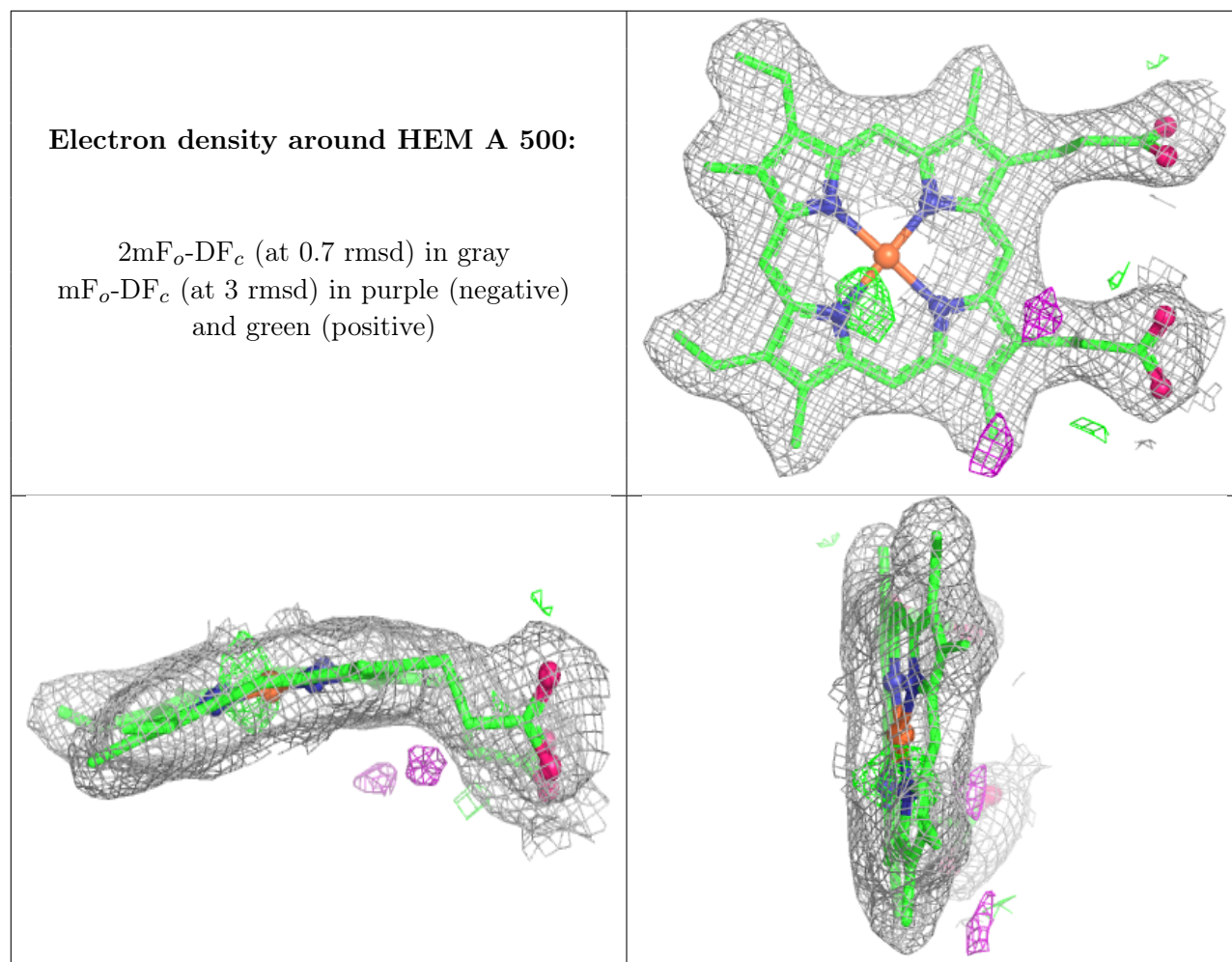
$2mF_o-DF_c$ (at 0.7 rmsd) in gray
 mF_o-DF_c (at 3 rmsd) in purple (negative)
and green (positive)

**Electron density around 4E8 B 800:**

$2mF_o-DF_c$ (at 0.7 rmsd) in gray
 mF_o-DF_c (at 3 rmsd) in purple (negative)
and green (positive)







6.5 Other polymers [i](#)

There are no such residues in this entry.