



wwPDB X-ray Structure Validation Summary Report ⓘ

Mar 8, 2026 – 05:57 PM UTC

PDB ID : 8D3O / pdb_00008d3o
Title : Crystal structure of human Apoptosis-Inducing Factor (AIF) complexed with 8-methoxyquinolin-4-amine
Authors : Brosey, C.A.; Tainer, J.A.
Deposited on : 2022-06-01
Resolution : 2.25 Å (reported)

This is a wwPDB X-ray Structure Validation Summary Report for a publicly released PDB entry.

We welcome your comments at validation@mail.wwpdb.org

A user guide is available at

<https://www.wwpdb.org/validation/2017/XrayValidationReportHelp>

with specific help available everywhere you see the ⓘ symbol.

The types of validation reports are described at

<http://www.wwpdb.org/validation/2017/FAQs#types>.

The following versions of software and data (see [references ⓘ](#)) were used in the production of this report:

MolProbity : 4-5-2 with Phenix2.0
Mogul : 2022.3.0, CSD as543be (2022)
Xtrriage (Phenix) : 2.0
EDS : 3.0
Buster-report : wwPDB partial adaption of 1.1.7 (2018)
Percentile statistics : 20250101.v01 (using entries in the PDB archive January 1st 2025)
CCP4 : 9.0.010 (Gargrove)
Density-Fitness : 1.0.12
Ideal geometry (proteins) : Engh & Huber (2001)
Ideal geometry (DNA, RNA) : Parkinson et al. (1996)
Validation Pipeline (wwPDB-VP) : 2.49

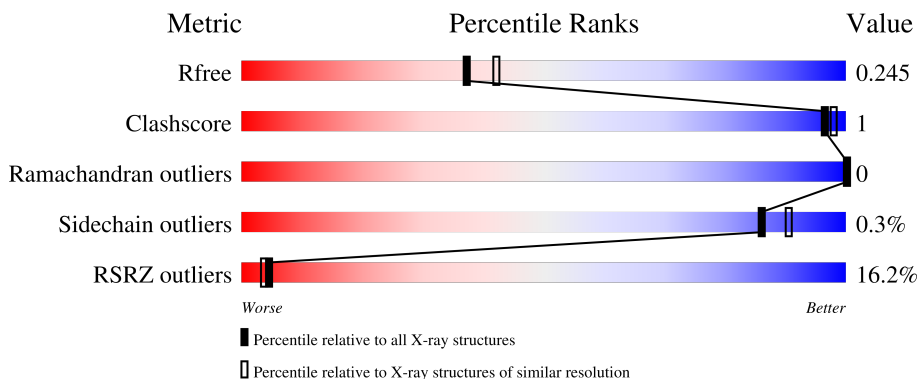
1 Overall quality at a glance

The following experimental techniques were used to determine the structure:

X-RAY DIFFRACTION

The reported resolution of this entry is 2.25 Å.

Percentile scores (ranging between 0-100) for global validation metrics of the entry are shown in the following graphic. The table shows the number of entries on which the scores are based.



Metric	Whole archive (#Entries)	Similar resolution (#Entries, resolution range(Å))
R_{free}	180053	1898 (2.26-2.26)
Clashscore	190562	2005 (2.26-2.26)
Ramachandran outliers	187476	1965 (2.26-2.26)
Sidechain outliers	187428	1966 (2.26-2.26)
RSRZ outliers	180081	1898 (2.26-2.26)

The table below summarises the geometric issues observed across the polymeric chains and their fit to the electron density. The red, orange, yellow and green segments of the lower bar indicate the fraction of residues that contain outliers for ≥ 3 , 2, 1 and 0 types of geometric quality criteria respectively. A grey segment represents the fraction of residues that are not modelled. The numeric value for each fraction is indicated below the corresponding segment, with a dot representing fractions $\leq 5\%$. The upper red bar (where present) indicates the fraction of residues that have poor fit to the electron density. The numeric value is given above the bar.

Mol	Chain	Length	Quality of chain
1	A	543	 10% 78% 20%
1	B	543	 16% 78% 20%
2	D	7	 100%

2 Entry composition [i](#)

There are 7 unique types of molecules in this entry. The entry contains 13201 atoms, of which 6373 are hydrogens and 0 are deuteriums.

In the tables below, the ZeroOcc column contains the number of atoms modelled with zero occupancy, the AltConf column contains the number of residues with at least one atom in alternate conformation and the Trace column contains the number of residues modelled with at most 2 atoms.

- Molecule 1 is a protein called Apoptosis-inducing factor 1, mitochondrial.

Mol	Chain	Residues	Atoms					ZeroOcc	AltConf	Trace	
			Total	C	H	N	O				S
1	A	436	6404	2079	3156	567	591	11	0	2	0
1	B	437	6337	2062	3109	565	590	11	0	2	0

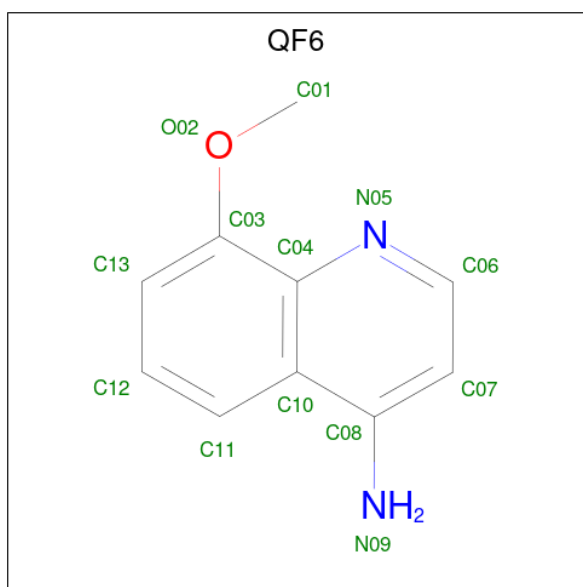
There are 14 discrepancies between the modelled and reference sequences:

Chain	Residue	Modelled	Actual	Comment	Reference
A	77	MET	-	initiating methionine	UNP O95831
A	614	LEU	-	expression tag	UNP O95831
A	615	GLU	-	expression tag	UNP O95831
A	616	VAL	-	expression tag	UNP O95831
A	617	LEU	-	expression tag	UNP O95831
A	618	PHE	-	expression tag	UNP O95831
A	619	GLN	-	expression tag	UNP O95831
B	77	MET	-	initiating methionine	UNP O95831
B	614	LEU	-	expression tag	UNP O95831
B	615	GLU	-	expression tag	UNP O95831
B	616	VAL	-	expression tag	UNP O95831
B	617	LEU	-	expression tag	UNP O95831
B	618	PHE	-	expression tag	UNP O95831
B	619	GLN	-	expression tag	UNP O95831

- Molecule 2 is a protein called Apoptosis-inducing factor (AIF), unidentified helix.

Mol	Chain	Residues	Atoms					ZeroOcc	AltConf	Trace
			Total	C	H	N	O			
2	D	7	53	18	21	7	7	0	0	0

- Molecule 3 is 8-methoxyquinolin-4-amine (CCD ID: QF6) (formula: C₁₀H₁₀N₂O) (labeled as "Ligand of Interest" by depositor).



Mol	Chain	Residues	Atoms				ZeroOcc	AltConf	
			Total	C	H	N			O
3	A	1	23	10	10	2	1	0	0
3	B	1	23	10	10	2	1	0	0

- Molecule 4 is 1,2-ETHANEDIOL (CCD ID: EDO) (formula: C₂H₆O₂).



Mol	Chain	Residues	Atoms			ZeroOcc	AltConf	
			Total	C	H			O
4	A	1	10	2	6	2	0	0

- Molecule 5 is FLAVIN-ADENINE DINUCLEOTIDE (CCD ID: FAD) (formula: C₂₇H₃₃N₉O₁₅P₂).



Mol	Chain	Residues	Atoms					ZeroOcc	AltConf	
			Total	C	H	N	O			P
5	A	1	84	27	31	9	15	2	0	0
5	B	1	83	27	30	9	15	2	0	0

- Molecule 6 is SULFATE ION (CCD ID: SO4) (formula: O₄S).



Mol	Chain	Residues	Atoms		ZeroOcc	AltConf
			Total	O S		
6	A	1	5	4 1	0	0
6	A	1	5	4 1	0	0

Continued on next page...

Continued from previous page...

Mol	Chain	Residues	Atoms			ZeroOcc	AltConf
6	A	1	Total	O	S	0	0
			5	4	1		
6	B	1	Total	O	S	0	0
			5	4	1		
6	B	1	Total	O	S	0	0
			5	4	1		
6	B	1	Total	O	S	0	0
			5	4	1		
6	B	1	Total	O	S	0	0
			5	4	1		

- Molecule 7 is water.

Mol	Chain	Residues	Atoms		ZeroOcc	AltConf
7	A	80	Total	O	0	0
			80	80		
7	B	64	Total	O	0	0
			64	64		

- Molecule 2: Apoptosis-inducing factor (AIF), unidentified helix

Chain D:  100%

There are no outlier residues recorded for this chain.

4 Data and refinement statistics

Property	Value	Source
Space group	P 21 21 21	Depositor
Cell constants a, b, c, α , β , γ	91.10Å 115.05Å 122.17Å 90.00° 90.00° 90.00°	Depositor
Resolution (Å)	83.75 – 2.25 83.75 – 2.25	Depositor EDS
% Data completeness (in resolution range)	99.5 (83.75-2.25) 99.6 (83.75-2.25)	Depositor EDS
R_{merge}	0.07	Depositor
R_{sym}	(Not available)	Depositor
$\langle I/\sigma(I) \rangle$ ¹	2.46 (at 2.25Å)	Xtrriage
Refinement program	PHENIX 1.18.2_3874	Depositor
R, R_{free}	0.213 , 0.237 0.223 , 0.245	Depositor DCC
R_{free} test set	3003 reflections (4.88%)	wwPDB-VP
Wilson B-factor (Å ²)	46.6	Xtrriage
Anisotropy	0.793	Xtrriage
Bulk solvent k_{sol} (e/Å ³), B_{sol} (Å ²)	0.43 , 59.6	EDS
L-test for twinning ²	$\langle L \rangle = 0.51$, $\langle L^2 \rangle = 0.34$	Xtrriage
Estimated twinning fraction	No twinning to report.	Xtrriage
F_o, F_c correlation	0.94	EDS
Total number of atoms	13201	wwPDB-VP
Average B, all atoms (Å ²)	70.0	wwPDB-VP

Xtrriage's analysis on translational NCS is as follows: *The largest off-origin peak in the Patterson function is 3.57% of the height of the origin peak. No significant pseudotranslation is detected.*

¹Intensities estimated from amplitudes.

²Theoretical values of $\langle |L| \rangle$, $\langle L^2 \rangle$ for acentric reflections are 0.5, 0.333 respectively for untwinned datasets, and 0.375, 0.2 for perfectly twinned datasets.

5 Model quality

5.1 Standard geometry

Bond lengths and bond angles in the following residue types are not validated in this section: QF6, EDO, FAD, SO4

The Z score for a bond length (or angle) is the number of standard deviations the observed value is removed from the expected value. A bond length (or angle) with $|Z| > 5$ is considered an outlier worth inspection. RMSZ is the root-mean-square of all Z scores of the bond lengths (or angles).

Mol	Chain	Bond lengths		Bond angles	
		RMSZ	# Z >5	RMSZ	# Z >5
1	A	0.09	0/3314	0.24	0/4502
1	B	0.09	0/3299	0.23	0/4487
All	All	0.09	0/6613	0.24	0/8989

There are no bond length outliers.

There are no bond angle outliers.

There are no chirality outliers.

There are no planarity outliers.

5.2 Too-close contacts

In the following table, the Non-H and H(model) columns list the number of non-hydrogen atoms and hydrogen atoms in the chain respectively. The H(added) column lists the number of hydrogen atoms added and optimized by MolProbity. The Clashes column lists the number of clashes within the asymmetric unit, whereas Symm-Clashes lists symmetry-related clashes.

Mol	Chain	Non-H	H(model)	H(added)	Clashes	Symm-Clashes
1	A	3248	3156	3154	6	0
1	B	3228	3109	3105	7	0
2	D	32	21	6	0	0
3	A	13	10	0	0	0
3	B	13	10	0	0	0
4	A	4	6	6	0	0
5	A	53	31	31	0	0
5	B	53	30	31	0	0
6	A	15	0	0	0	0
6	B	25	0	0	0	0
7	A	80	0	0	0	0

Continued on next page...

Continued from previous page...

Mol	Chain	Non-H	H(model)	H(added)	Clashes	Symm-Clashes
7	B	64	0	0	0	0
All	All	6828	6373	6333	13	0

The all-atom clashscore is defined as the number of clashes found per 1000 atoms (including hydrogen atoms). The all-atom clashscore for this structure is 1.

The worst 5 of 13 close contacts within the same asymmetric unit are listed below, sorted by their clash magnitude.

Atom-1	Atom-2	Interatomic distance (Å)	Clash overlap (Å)
1:A:340:MET:HE1	1:A:352:THR:HG21	1.87	0.57
1:B:277:VAL:O	1:B:281:THR:HG23	2.08	0.54
1:A:348:LEU:HD22	1:A:565:ILE:HD11	1.91	0.52
1:A:172:ARG:N	1:A:173:PRO:CD	2.75	0.50
1:B:172:ARG:N	1:B:173:PRO:CD	2.75	0.50

There are no symmetry-related clashes.

5.3 Torsion angles [i](#)

5.3.1 Protein backbone [i](#)

In the following table, the Percentiles column shows the percent Ramachandran outliers of the chain as a percentile score with respect to all X-ray entries followed by that with respect to entries of similar resolution.

The Analysed column shows the number of residues for which the backbone conformation was analysed, and the total number of residues.

Mol	Chain	Analysed	Favoured	Allowed	Outliers	Percentiles	
1	A	430/543 (79%)	418 (97%)	12 (3%)	0	100	100
1	B	433/543 (80%)	416 (96%)	17 (4%)	0	100	100
All	All	863/1086 (80%)	834 (97%)	29 (3%)	0	100	100

There are no Ramachandran outliers to report.

5.3.2 Protein sidechains [i](#)

In the following table, the Percentiles column shows the percent sidechain outliers of the chain as a percentile score with respect to all X-ray entries followed by that with respect to entries of similar

resolution.

The Analysed column shows the number of residues for which the sidechain conformation was analysed, and the total number of residues.

Mol	Chain	Analysed	Rotameric	Outliers	Percentiles	
1	A	320/445 (72%)	319 (100%)	1 (0%)	86	90
1	B	316/445 (71%)	315 (100%)	1 (0%)	86	90
All	All	636/890 (72%)	634 (100%)	2 (0%)	86	90

All (2) residues with a non-rotameric sidechain are listed below:

Mol	Chain	Res	Type
1	A	431	SER
1	B	431	SER

Sometimes sidechains can be flipped to improve hydrogen bonding and reduce clashes. All (4) such sidechains are listed below:

Mol	Chain	Res	Type
1	A	215	GLN
1	A	241	ASN
1	A	478	HIS
1	B	598	HIS

5.3.3 RNA [i](#)

There are no RNA molecules in this entry.

5.4 Non-standard residues in protein, DNA, RNA chains [i](#)

There are no non-standard protein/DNA/RNA residues in this entry.

5.5 Carbohydrates [i](#)

There are no oligosaccharides in this entry.

5.6 Ligand geometry [i](#)

13 ligands are modelled in this entry.

In the following table, the Counts columns list the number of bonds (or angles) for which Mogul statistics could be retrieved, the number of bonds (or angles) that are observed in the model and the number of bonds (or angles) that are defined in the Chemical Component Dictionary. The Link column lists molecule types, if any, to which the group is linked. The Z score for a bond length (or angle) is the number of standard deviations the observed value is removed from the expected value. A bond length (or angle) with $|Z| > 2$ is considered an outlier worth inspection. RMSZ is the root-mean-square of all Z scores of the bond lengths (or angles).

Mol	Type	Chain	Res	Link	Bond lengths			Bond angles		
					Counts	RMSZ	# Z > 2	Counts	RMSZ	# Z > 2
5	FAD	B	702	-	58,58,58	1.44	4 (6%)	85,89,89	0.93	3 (3%)
5	FAD	A	703	-	58,58,58	1.45	4 (6%)	85,89,89	0.91	3 (3%)
4	EDO	A	702	-	3,3,3	0.43	0	2,2,2	0.37	0
6	SO4	B	704	-	4,4,4	0.24	0	6,6,6	0.07	0
6	SO4	A	704	-	4,4,4	0.24	0	6,6,6	0.07	0
6	SO4	B	707	-	4,4,4	0.24	0	6,6,6	0.09	0
6	SO4	B	706	-	4,4,4	0.24	0	6,6,6	0.09	0
6	SO4	B	705	-	4,4,4	0.24	0	6,6,6	0.07	0
3	QF6	A	701	-	14,14,14	0.88	0	19,19,19	1.44	2 (10%)
6	SO4	B	703	-	4,4,4	0.24	0	6,6,6	0.08	0
6	SO4	A	706	-	4,4,4	0.23	0	6,6,6	0.07	0
3	QF6	B	701	-	14,14,14	0.90	0	19,19,19	1.43	2 (10%)
6	SO4	A	705	-	4,4,4	0.24	0	6,6,6	0.07	0

In the following table, the Chirals column lists the number of chiral outliers, the number of chiral centers analysed, the number of these observed in the model and the number defined in the Chemical Component Dictionary. Similar counts are reported in the Torsion and Rings columns. '-' means no outliers of that kind were identified.

Mol	Type	Chain	Res	Link	Chirals	Torsions	Rings
5	FAD	B	702	-	-	4/34/50/50	0/6/6/6
5	FAD	A	703	-	-	4/34/50/50	0/6/6/6
4	EDO	A	702	-	-	0/1/1/1	-
3	QF6	A	701	-	-	2/2/2/2	0/2/2/2
3	QF6	B	701	-	-	2/2/2/2	0/2/2/2

The worst 5 of 8 bond length outliers are listed below:

Mol	Chain	Res	Type	Atoms	Z	Observed(Å)	Ideal(Å)
5	A	703	FAD	C9-C9A	6.25	1.49	1.39
5	B	702	FAD	C9-C9A	6.24	1.49	1.39
5	A	703	FAD	C6-C5X	6.07	1.49	1.40
5	B	702	FAD	C6-C5X	6.04	1.49	1.40

Continued on next page...

Continued from previous page...

Mol	Chain	Res	Type	Atoms	Z	Observed(Å)	Ideal(Å)
5	B	702	FAD	O5'-C5'	3.26	1.56	1.44

The worst 5 of 10 bond angle outliers are listed below:

Mol	Chain	Res	Type	Atoms	Z	Observed(°)	Ideal(°)
3	A	701	QF6	O02-C03-C04	5.46	120.27	115.06
3	B	701	QF6	O02-C03-C04	5.42	120.23	115.06
5	B	702	FAD	C4-N3-C2	-2.60	121.02	125.64
5	A	703	FAD	C4-N3-C2	-2.60	121.03	125.64
3	A	701	QF6	O02-C03-C13	-2.35	120.32	124.28

There are no chirality outliers.

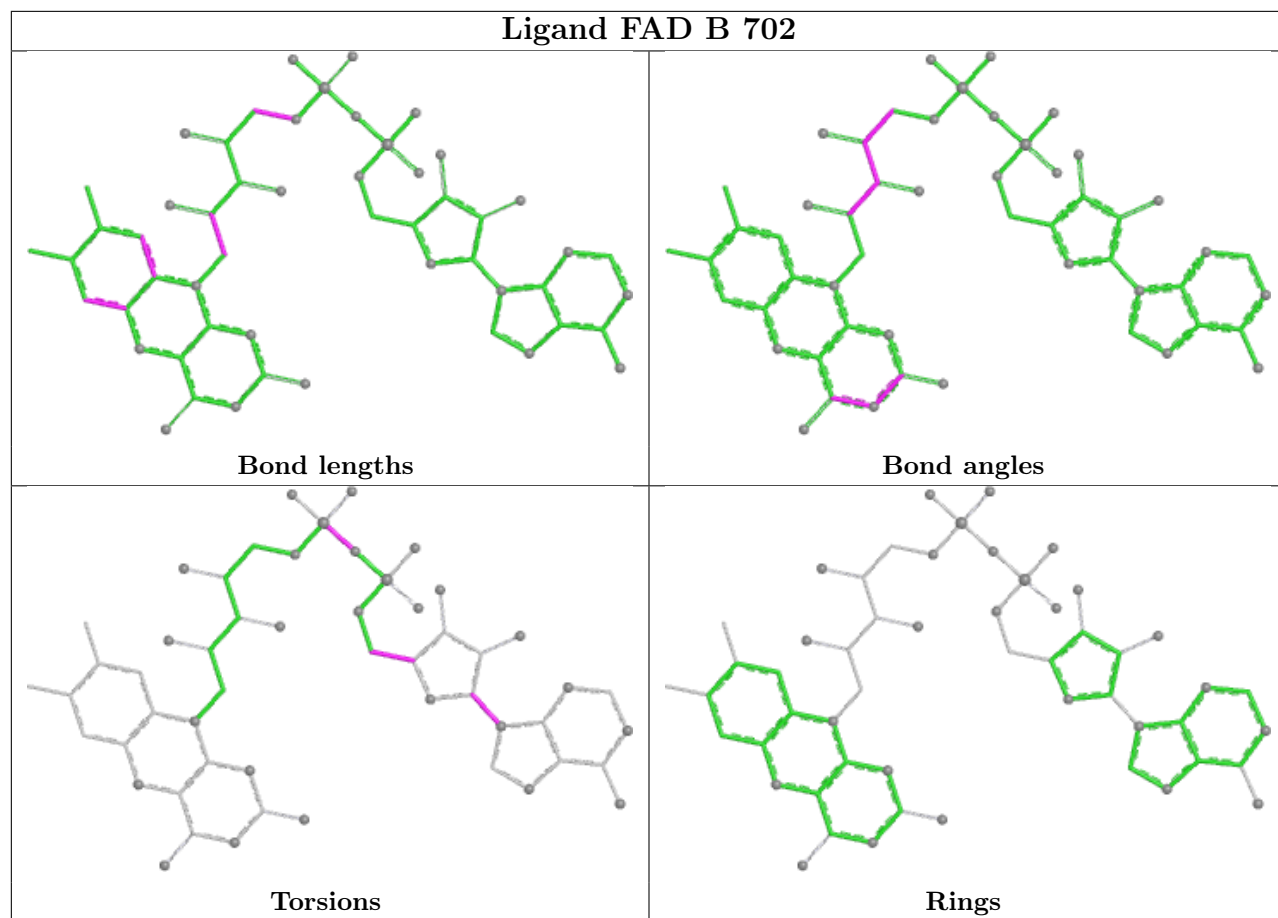
5 of 12 torsion outliers are listed below:

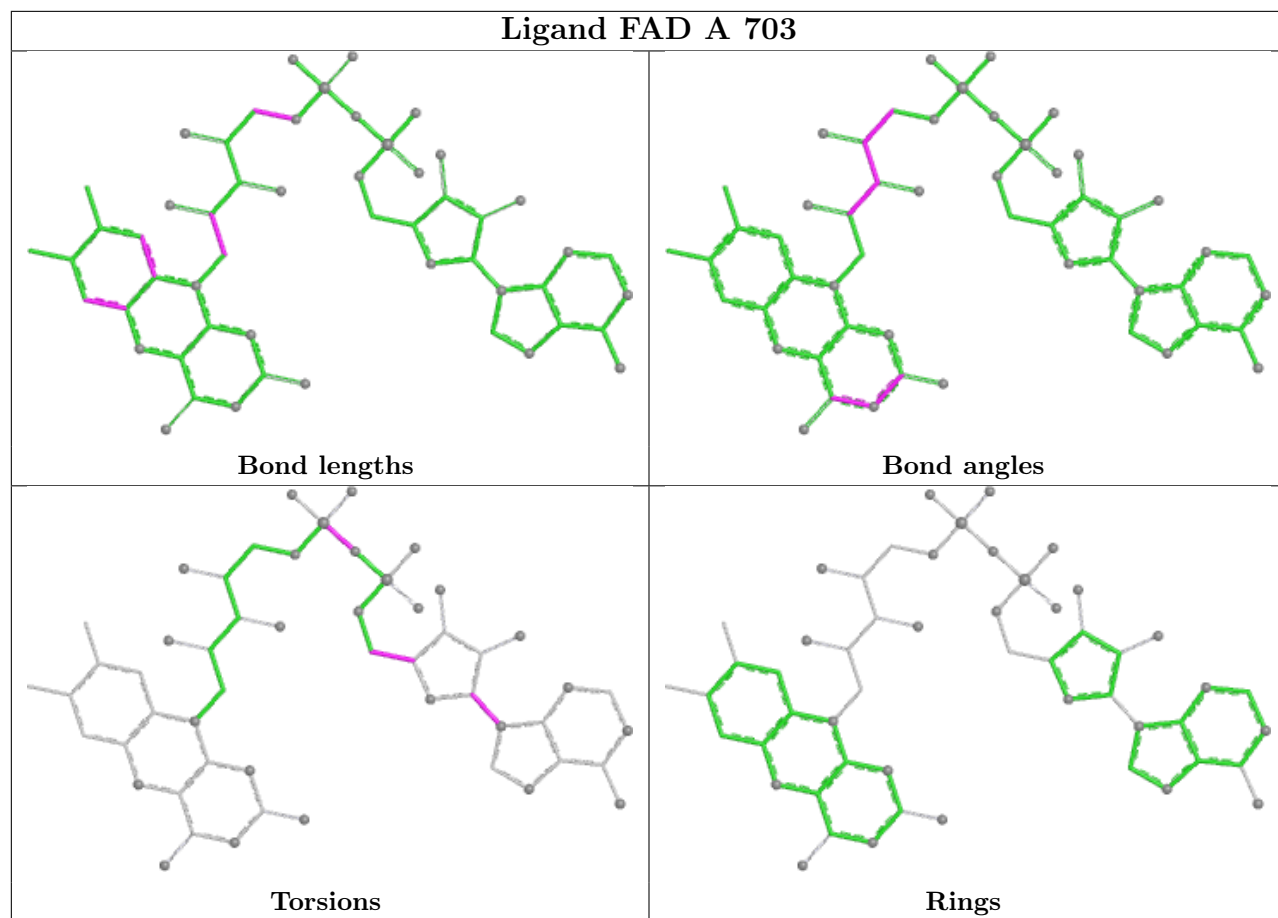
Mol	Chain	Res	Type	Atoms
3	A	701	QF6	C04-C03-O02-C01
3	B	701	QF6	C04-C03-O02-C01
3	A	701	QF6	C13-C03-O02-C01
3	B	701	QF6	C13-C03-O02-C01
5	B	702	FAD	C3B-C4B-C5B-O5B

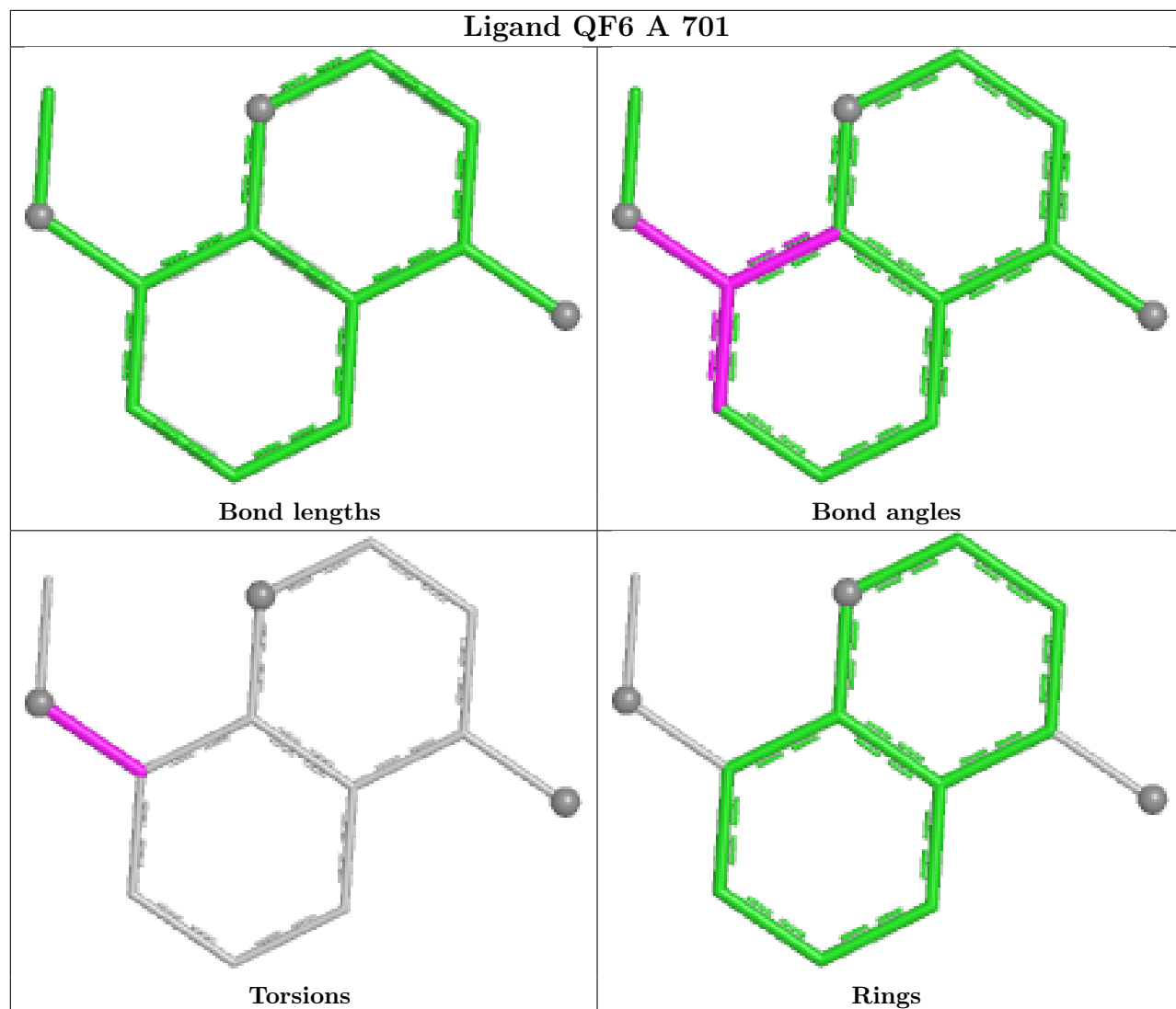
There are no ring outliers.

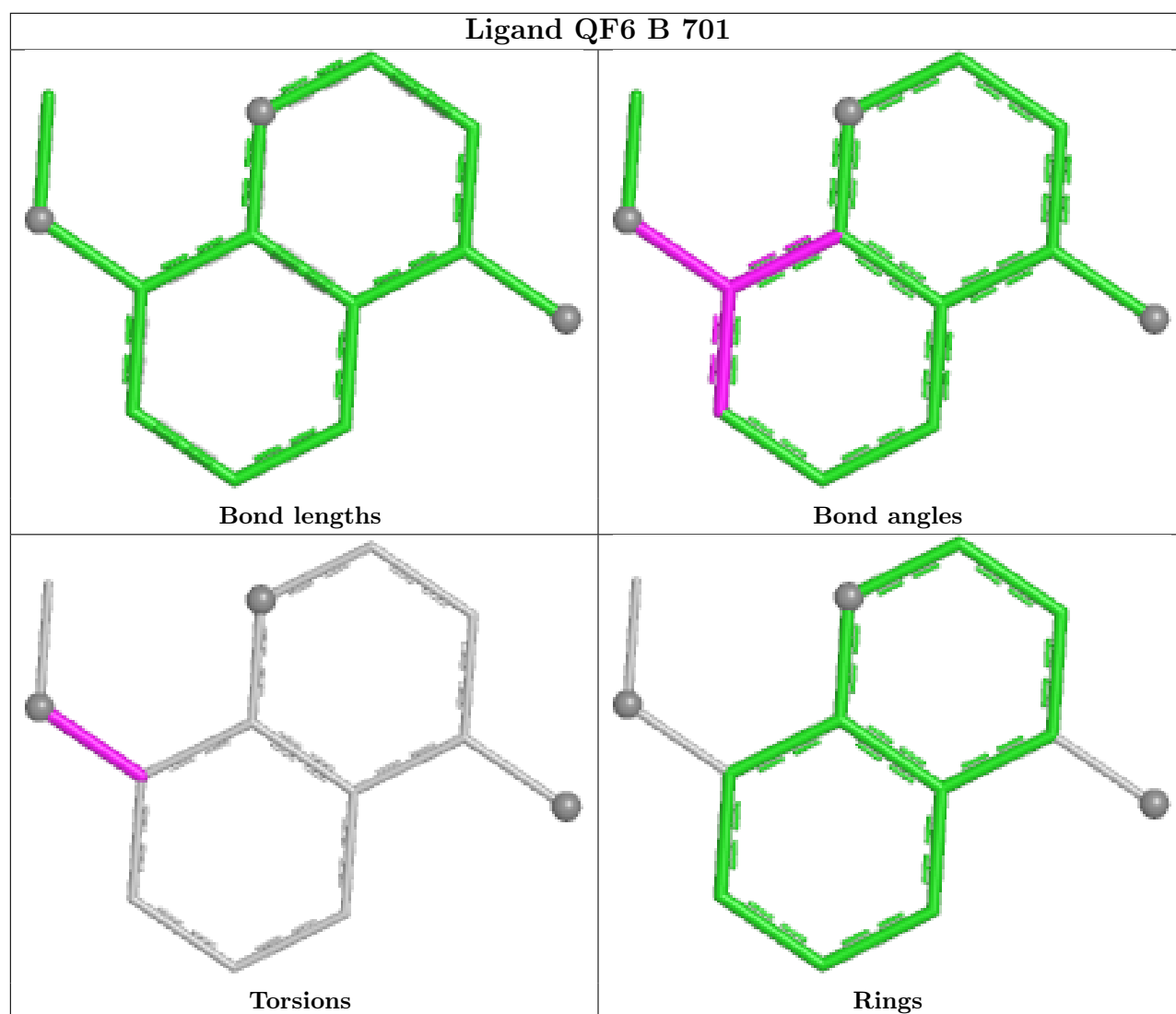
No monomer is involved in short contacts.

The following is a two-dimensional graphical depiction of Mogul quality analysis of bond lengths, bond angles, torsion angles, and ring geometry for all instances of the Ligand of Interest. In addition, ligands with molecular weight > 250 and outliers as shown on the validation Tables will also be included. For torsion angles, if less than 5% of the Mogul distribution of torsion angles is within 10 degrees of the torsion angle in question, then that torsion angle is considered an outlier. Any bond that is central to one or more torsion angles identified as an outlier by Mogul will be highlighted in the graph. For rings, the root-mean-square deviation (RMSD) between the ring in question and similar rings identified by Mogul is calculated over all ring torsion angles. If the average RMSD is greater than 60 degrees and the minimal RMSD between the ring in question and any Mogul-identified rings is also greater than 60 degrees, then that ring is considered an outlier. The outliers are highlighted in purple. The color gray indicates Mogul did not find sufficient equivalents in the CSD to analyse the geometry.









5.7 Other polymers [i](#)

There are no such residues in this entry.

5.8 Polymer linkage issues [i](#)

There are no chain breaks in this entry.

6 Fit of model and data [i](#)

6.1 Protein, DNA and RNA chains [i](#)

In the following table, the column labelled ‘#RSRZ > 2’ contains the number (and percentage) of RSRZ outliers, followed by percent RSRZ outliers for the chain as percentile scores relative to all X-ray entries and entries of similar resolution. The OWAB column contains the minimum, median, 95th percentile and maximum values of the occupancy-weighted average B-factor per residue. The column labelled ‘Q < 0.9’ lists the number of (and percentage) of residues with an average occupancy less than 0.9.

Mol	Chain	Analysed	<RSRZ>	#RSRZ>2	OWAB(Å ²)	Q<0.9
1	A	436/543 (80%)	1.01	53 (12%) 8 8	27, 66, 96, 126	2 (0%)
1	B	437/543 (80%)	1.18	88 (20%) 3 2	25, 73, 106, 126	1 (0%)
2	D	0/7	-	-	-	-
All	All	873/1093 (79%)	1.10	141 (16%) 4 4	25, 69, 102, 126	3 (0%)

The worst 5 of 141 RSRZ outliers are listed below:

Mol	Chain	Res	Type	RSRZ
1	B	128	ALA	6.4
1	A	185	PRO	6.4
1	B	599	GLU	6.2
1	A	616	VAL	6.2
1	A	182	SER	6.1

6.2 Non-standard residues in protein, DNA, RNA chains [i](#)

There are no non-standard protein/DNA/RNA residues in this entry.

6.3 Carbohydrates [i](#)

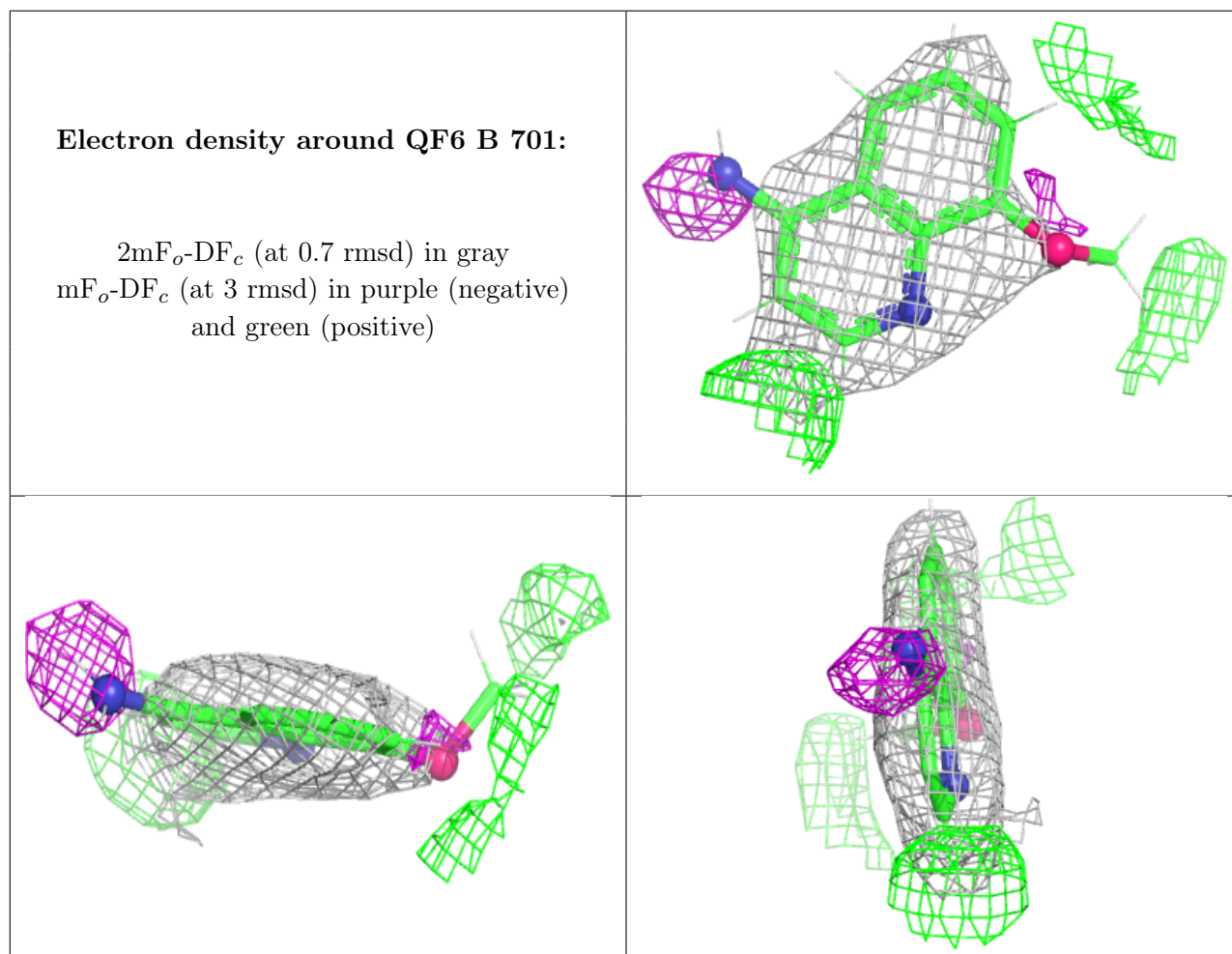
There are no oligosaccharides in this entry.

6.4 Ligands [i](#)

In the following table, the Atoms column lists the number of modelled atoms in the group and the number defined in the chemical component dictionary. The B-factors column lists the minimum, median, 95th percentile and maximum values of B factors of atoms in the group. The column labelled ‘Q < 0.9’ lists the number of atoms with occupancy less than 0.9.

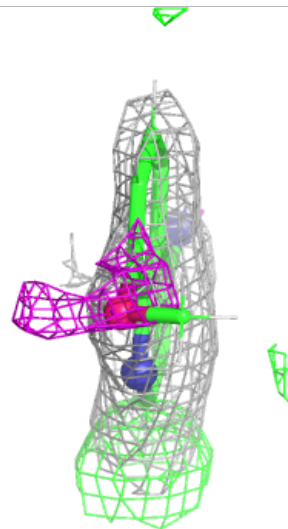
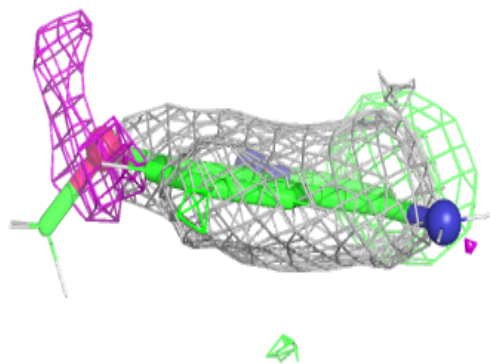
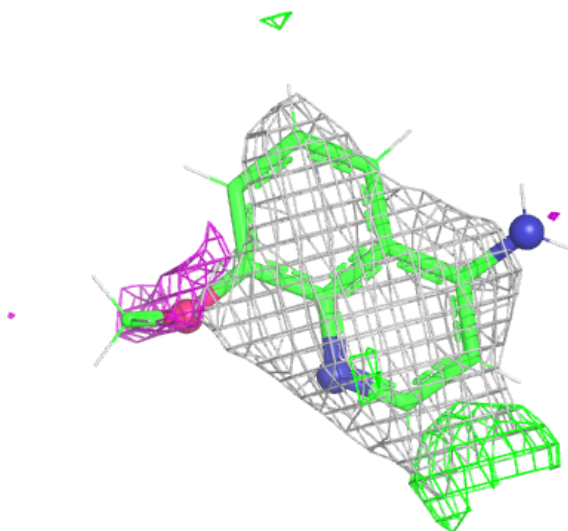
Mol	Type	Chain	Res	Atoms	RSCC	RSR	B-factors(\AA^2)	Q<0.9
6	SO4	B	703	5/5	0.62	0.17	97,100,104,109	0
6	SO4	B	707	5/5	0.71	0.15	75,76,100,107	0
6	SO4	B	705	5/5	0.73	0.10	93,98,107,110	0
6	SO4	A	705	5/5	0.76	0.09	96,98,106,115	0
3	QF6	B	701	13/13	0.77	0.27	42,59,82,82	23
6	SO4	B	706	5/5	0.78	0.20	80,81,86,90	0
3	QF6	A	701	13/13	0.81	0.24	42,60,76,76	23
6	SO4	B	704	5/5	0.82	0.08	92,101,103,108	0
6	SO4	A	704	5/5	0.87	0.10	74,78,95,99	0
6	SO4	A	706	5/5	0.90	0.13	59,69,87,92	0
4	EDO	A	702	4/4	0.92	0.21	44,55,67,69	0
5	FAD	A	703	53/53	0.96	0.09	35,48,60,73	0
5	FAD	B	702	53/53	0.96	0.09	39,49,63,75	0

The following is a graphical depiction of the model fit to experimental electron density of all instances of the Ligand of Interest. In addition, ligands with molecular weight > 250 and outliers as shown on the geometry validation Tables will also be included. Each fit is shown from different orientation to approximate a three-dimensional view.



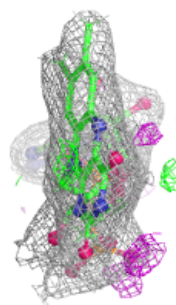
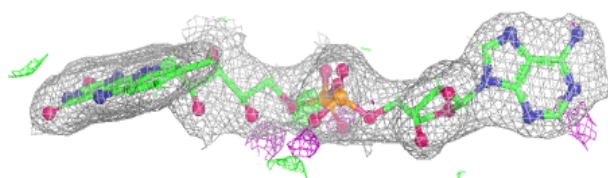
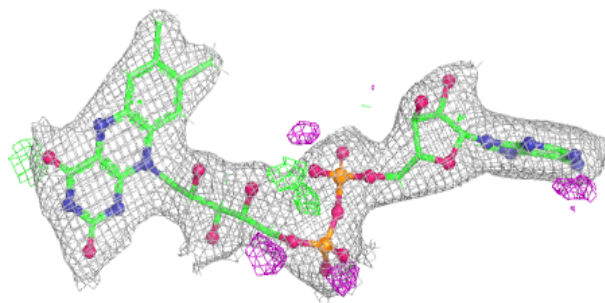
Electron density around QF6 A 701:

$2mF_o-DF_c$ (at 0.7 rmsd) in gray
 mF_o-DF_c (at 3 rmsd) in purple (negative)
and green (positive)

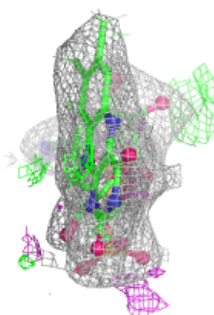
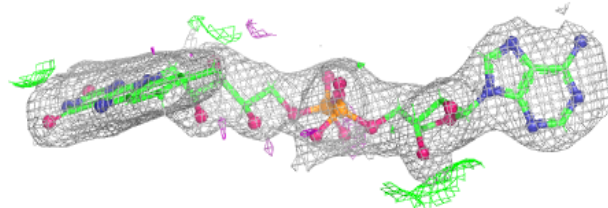
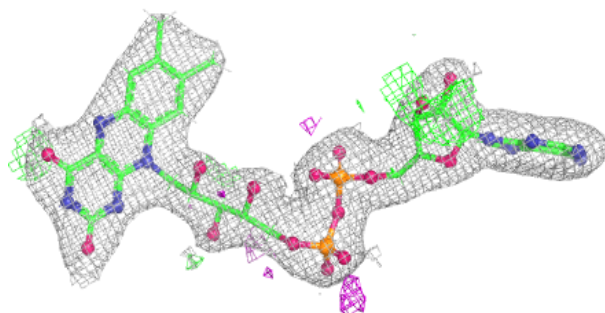


Electron density around FAD A 703:

$2mF_o-DF_c$ (at 0.7 rmsd) in gray
 mF_o-DF_c (at 3 rmsd) in purple (negative)
and green (positive)

**Electron density around FAD B 702:**

$2mF_o-DF_c$ (at 0.7 rmsd) in gray
 mF_o-DF_c (at 3 rmsd) in purple (negative)
and green (positive)



6.5 Other polymers

There are no such residues in this entry.