



wwPDB X-ray Structure Validation Summary Report

Mar 5, 2026 – 06:06 AM UTC

PDB ID : 6D66 / pdb_00006d66
Title : Crystal structure of the human dual specificity 1 catalytic domain (C258S) as a maltose binding protein fusion in complex with the designed AR protein mbp3_16
Authors : Gumpena, R.; Waugh, D.S.; Lountos, G.T.
Deposited on : 2018-04-20
Resolution : 2.23 Å(reported)

This is a wwPDB X-ray Structure Validation Summary Report for a publicly released PDB entry.

We welcome your comments at validation@mail.wwpdb.org

A user guide is available at

<https://www.wwpdb.org/validation/2017/XrayValidationReportHelp>

with specific help available everywhere you see the  symbol.

The types of validation reports are described at

<http://www.wwpdb.org/validation/2017/FAQs#types>.

The following versions of software and data (see [references](#) ) were used in the production of this report:

MolProbity : 4-5-2 with Phenix2.0
Mogul : 2022.3.0, CSD as543be (2022)
Xtriage (Phenix) : 2.0
EDS : 3.0
Percentile statistics : 20250101.v01 (using entries in the PDB archive January 1st 2025)
CCP4 : 9.0.010 (Gargrove)
Density-Fitness : 1.0.12
Ideal geometry (proteins) : Engh & Huber (2001)
Ideal geometry (DNA, RNA) : Parkinson et al. (1996)
Validation Pipeline (wwPDB-VP) : 2.49

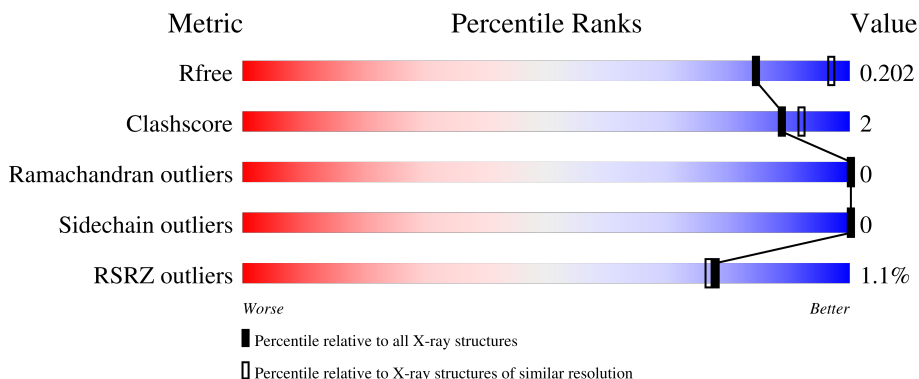
1 Overall quality at a glance

The following experimental techniques were used to determine the structure:

X-RAY DIFFRACTION

The reported resolution of this entry is 2.23 Å.

Percentile scores (ranging between 0-100) for global validation metrics of the entry are shown in the following graphic. The table shows the number of entries on which the scores are based.



Metric	Whole archive (#Entries)	Similar resolution (#Entries, resolution range(Å))
R_{free}	180053	7682 (2.24-2.20)
Clashscore	190562	8402 (2.24-2.20)
Ramachandran outliers	187476	8303 (2.24-2.20)
Sidechain outliers	187428	8304 (2.24-2.20)
RSRZ outliers	180081	7683 (2.24-2.20)

The table below summarises the geometric issues observed across the polymeric chains and their fit to the electron density. The red, orange, yellow and green segments of the lower bar indicate the fraction of residues that contain outliers for ≥ 3 , 2, 1 and 0 types of geometric quality criteria respectively. A grey segment represents the fraction of residues that are not modelled. The numeric value for each fraction is indicated below the corresponding segment, with a dot representing fractions $\leq 5\%$. The upper red bar (where present) indicates the fraction of residues that have poor fit to the electron density. The numeric value is given above the bar.

Mol	Chain	Length	Quality of chain
1	A	520	 95% 5%
2	B	136	 89% 8%

The following table lists non-polymeric compounds, carbohydrate monomers and non-standard residues in protein, DNA, RNA chains that are outliers for geometric or electron-density-fit criteria:

Mol	Type	Chain	Res	Chirality	Geometry	Clashes	Electron density
5	GLY	A	1412	-	X	-	-
9	DAL	B	204	-	X	-	-

2 Entry composition

There are 10 unique types of molecules in this entry. The entry contains 5428 atoms, of which 0 are hydrogens and 0 are deuteriums.

In the tables below, the ZeroOcc column contains the number of atoms modelled with zero occupancy, the AltConf column contains the number of residues with at least one atom in alternate conformation and the Trace column contains the number of residues modelled with at most 2 atoms.

- Molecule 1 is a protein called Maltose-binding periplasmic protein, Dual specificity protein phosphatase 1.

Mol	Chain	Residues	Atoms					ZeroOcc	AltConf	Trace
			Total	C	N	O	S			
1	A	517	4032	2594	674	753	11	0	8	0

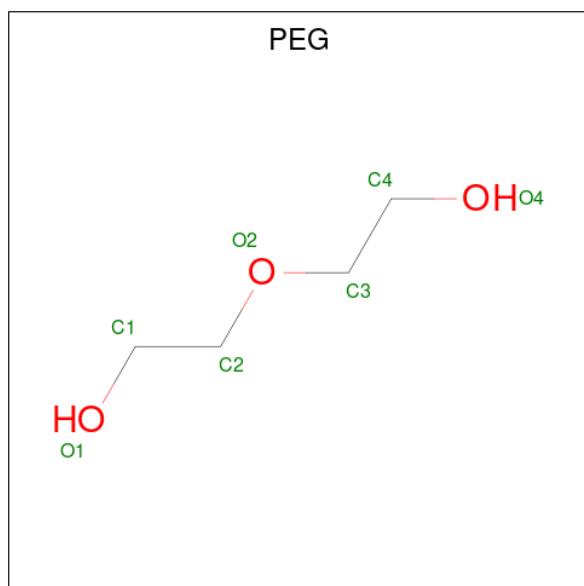
There are 21 discrepancies between the modelled and reference sequences:

Chain	Residue	Modelled	Actual	Comment	Reference
A	1	MET	-	initiating methionine	UNP P0AEX9
A	83	ALA	ASP	engineered mutation	UNP P0AEX9
A	84	ALA	LYS	engineered mutation	UNP P0AEX9
A	173	ALA	GLU	engineered mutation	UNP P0AEX9
A	174	ALA	ASN	engineered mutation	UNP P0AEX9
A	240	ALA	LYS	engineered mutation	UNP P0AEX9
A	360	ALA	GLU	engineered mutation	UNP P0AEX9
A	363	ALA	LYS	engineered mutation	UNP P0AEX9
A	364	ALA	ASP	engineered mutation	UNP P0AEX9
A	367	THR	-	linker	UNP P0AEX9
A	368	ASN	-	linker	UNP P0AEX9
A	369	ALA	-	linker	UNP P0AEX9
A	370	ALA	-	linker	UNP P0AEX9
A	371	ALA	-	linker	UNP P0AEX9
A	458	SER	CYS	engineered mutation	UNP P28562
A	515	HIS	-	expression tag	UNP P28562
A	516	HIS	-	expression tag	UNP P28562
A	517	HIS	-	expression tag	UNP P28562
A	518	HIS	-	expression tag	UNP P28562
A	519	HIS	-	expression tag	UNP P28562
A	520	HIS	-	expression tag	UNP P28562

- Molecule 2 is a protein called Designed AR protein mbp3_16.

Mol	Chain	Residues	Atoms					ZeroOcc	AltConf	Trace
			Total	C	N	O	S			
2	B	125	951	607	157	185	2	0	1	0

- Molecule 3 is DI(HYDROXYETHYL)ETHER (CCD ID: PEG) (formula: C₄H₁₀O₃).



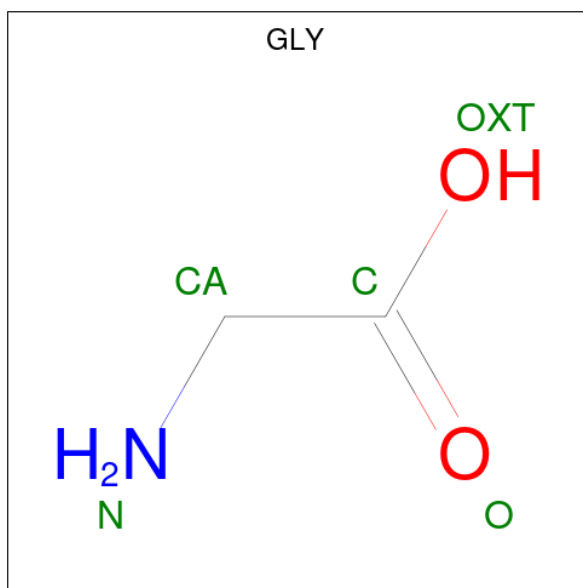
Mol	Chain	Residues	Atoms			ZeroOcc	AltConf
			Total	C	O		
3	A	1	7	4	3	0	0
3	A	1	7	4	3	0	0
3	B	1	7	4	3	0	0

- Molecule 4 is PHOSPHATE ION (CCD ID: PO4) (formula: O₄P).



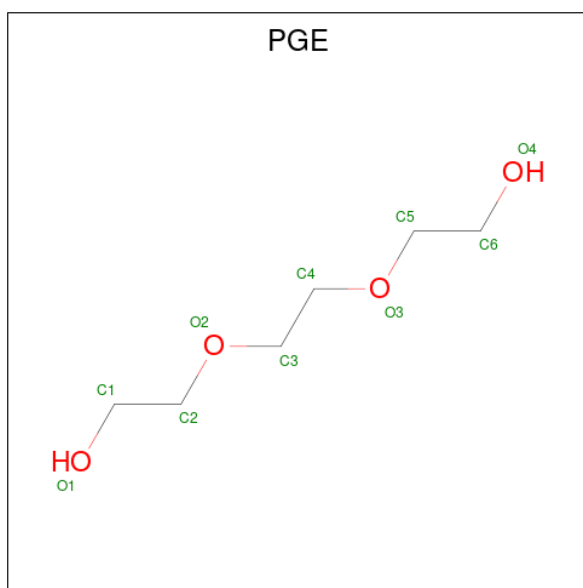
Mol	Chain	Residues	Atoms			ZeroOcc	AltConf
4	A	1	Total	O	P	0	0
			5	4	1		

- Molecule 5 is GLYCINE (CCD ID: GLY) (formula: $C_2H_5NO_2$).



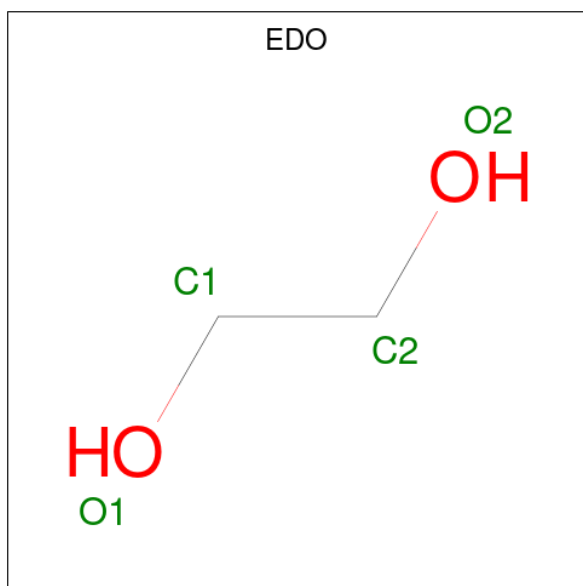
Mol	Chain	Residues	Atoms				ZeroOcc	AltConf
5	A	1	Total	C	N	O	0	0
			5	2	1	2		
5	A	1	Total	C	N	O	0	0
			5	2	1	2		
5	A	1	Total	C	N	O	0	0
			5	2	1	2		

- Molecule 6 is TRIETHYLENE GLYCOL (CCD ID: PGE) (formula: $C_6H_{14}O_4$).



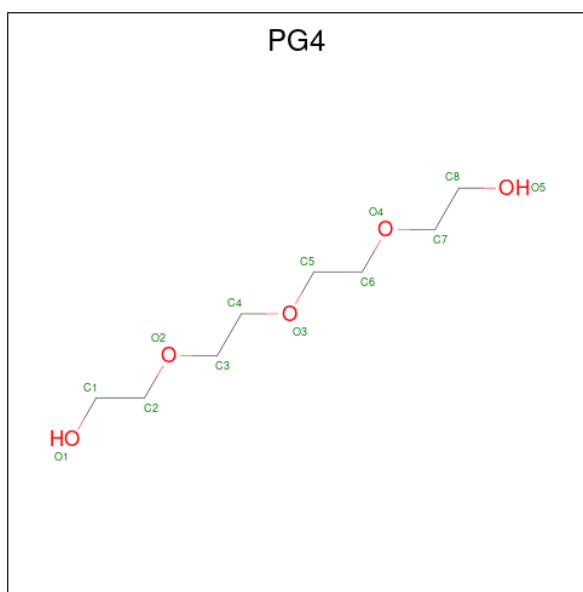
Mol	Chain	Residues	Atoms		ZeroOcc	AltConf
6	A	1	Total	C O	0	0
			10	6 4		
6	A	1	Total	C O	0	0
			10	6 4		
6	A	1	Total	C O	0	0
			10	6 4		

- Molecule 7 is 1,2-ETHANEDIOL (CCD ID: EDO) (formula: $C_2H_6O_2$).



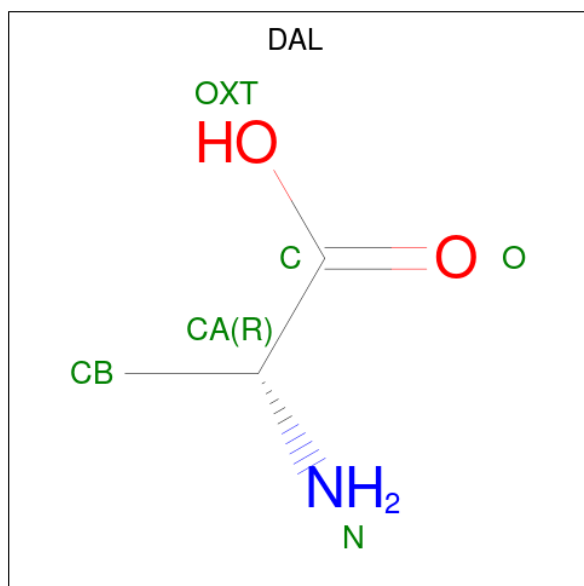
Mol	Chain	Residues	Atoms	ZeroOcc	AltConf
7	A	1	Total C O 4 2 2	0	0
7	A	1	Total C O 4 2 2	0	0
7	A	1	Total C O 4 2 2	0	0
7	A	1	Total C O 4 2 2	0	0
7	A	1	Total C O 4 2 2	0	0
7	A	1	Total C O 4 2 2	0	0
7	A	1	Total C O 4 2 2	0	0
7	A	1	Total C O 4 2 2	0	0
7	A	1	Total C O 4 2 2	0	0
7	A	1	Total C O 4 2 2	0	0
7	B	1	Total C O 4 2 2	0	0
7	B	1	Total C O 4 2 2	0	0
7	B	1	Total C O 4 2 2	0	0

- Molecule 8 is TETRAETHYLENE GLYCOL (CCD ID: PG4) (formula: C₈H₁₈O₅).



Mol	Chain	Residues	Atoms			ZeroOcc	AltConf
8	A	1	Total	C	O	0	0
			13	8	5		

- Molecule 9 is D-ALANINE (CCD ID: DAL) (formula: $C_3H_7NO_2$).



Mol	Chain	Residues	Atoms				ZeroOcc	AltConf
9	B	1	Total	C	N	O	0	0
			6	3	1	2		

- Molecule 10 is water.

Mol	Chain	Residues	Atoms		ZeroOcc	AltConf
10	A	233	Total	O	0	0
			233	233		
10	B	74	Total	O	0	0
			74	74		

3 Residue-property plots [i](#)

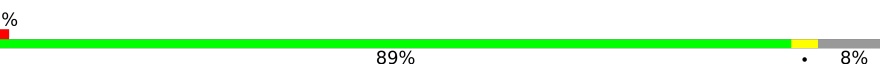
These plots are drawn for all protein, RNA, DNA and oligosaccharide chains in the entry. The first graphic for a chain summarises the proportions of the various outlier classes displayed in the second graphic. The second graphic shows the sequence view annotated by issues in geometry and electron density. Residues are color-coded according to the number of geometric quality criteria for which they contain at least one outlier: green = 0, yellow = 1, orange = 2 and red = 3 or more. A red dot above a residue indicates a poor fit to the electron density ($RSRZ > 2$). Stretches of 2 or more consecutive residues without any outlier are shown as a green connector. Residues present in the sample, but not in the model, are shown in grey.

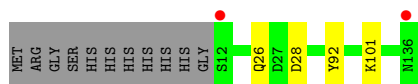
- Molecule 1: Maltose-binding periplasmic protein,Dual specificity protein phosphatase 1

Chain A:  95% 5%



- Molecule 2: Designed AR protein mbp3_16

Chain B:  89% 8%



4 Data and refinement statistics

Property	Value	Source
Space group	P 41 21 2	Depositor
Cell constants a, b, c, α , β , γ	79.97Å 79.97Å 265.80Å 90.00° 90.00° 90.00°	Depositor
Resolution (Å)	36.44 – 2.23 36.44 – 2.23	Depositor EDS
% Data completeness (in resolution range)	99.3 (36.44-2.23) 99.3 (36.44-2.23)	Depositor EDS
R_{merge}	0.05	Depositor
R_{sym}	(Not available)	Depositor
$\langle I/\sigma(I) \rangle$ ¹	1.71 (at 2.22Å)	Xtrriage
Refinement program	PHENIX (1.11.1_2575: ???)	Depositor
R, R_{free}	0.159 , 0.202 0.160 , 0.202	Depositor DCC
R_{free} test set	2135 reflections (4.92%)	wwPDB-VP
Wilson B-factor (Å ²)	30.4	Xtrriage
Anisotropy	0.101	Xtrriage
Bulk solvent k_{sol} (e/Å ³), B_{sol} (Å ²)	0.35 , 43.4	EDS
L-test for twinning ²	$\langle L \rangle = 0.48$, $\langle L^2 \rangle = 0.31$	Xtrriage
Estimated twinning fraction	No twinning to report.	Xtrriage
F_o, F_c correlation	0.96	EDS
Total number of atoms	5428	wwPDB-VP
Average B, all atoms (Å ²)	32.0	wwPDB-VP

Xtrriage's analysis on translational NCS is as follows: *The largest off-origin peak in the Patterson function is 3.06% of the height of the origin peak. No significant pseudotranslation is detected.*

¹Intensities estimated from amplitudes.

²Theoretical values of $\langle |L| \rangle$, $\langle L^2 \rangle$ for acentric reflections are 0.5, 0.333 respectively for untwinned datasets, and 0.375, 0.2 for perfectly twinned datasets.

5 Model quality

5.1 Standard geometry

Bond lengths and bond angles in the following residue types are not validated in this section: EDO, PGE, PO4, DAL, PG4, PEG

The Z score for a bond length (or angle) is the number of standard deviations the observed value is removed from the expected value. A bond length (or angle) with $|Z| > 5$ is considered an outlier worth inspection. RMSZ is the root-mean-square of all Z scores of the bond lengths (or angles).

Mol	Chain	Bond lengths		Bond angles	
		RMSZ	# Z >5	RMSZ	# Z >5
1	A	0.30	0/4158	0.46	0/5649
2	B	0.32	0/971	0.47	0/1317
All	All	0.30	0/5129	0.46	0/6966

There are no bond length outliers.

There are no bond angle outliers.

There are no chirality outliers.

There are no planarity outliers.

5.2 Too-close contacts

In the following table, the Non-H and H(model) columns list the number of non-hydrogen atoms and hydrogen atoms in the chain respectively. The H(added) column lists the number of hydrogen atoms added and optimized by MolProbity. The Clashes column lists the number of clashes within the asymmetric unit, whereas Symm-Clashes lists symmetry-related clashes.

Mol	Chain	Non-H	H(model)	H(added)	Clashes	Symm-Clashes
1	A	4032	0	3963	16	0
2	B	951	0	927	4	0
3	A	14	0	20	0	0
3	B	7	0	10	1	0
4	A	5	0	0	0	0
5	A	15	0	6	0	0
6	A	30	0	42	1	0
7	A	36	0	54	0	0
7	B	12	0	18	2	0
8	A	13	0	18	0	0
9	B	6	0	6	0	0

Continued on next page...

Continued from previous page...

Mol	Chain	Non-H	H(model)	H(added)	Clashes	Symm-Clashes
10	A	233	0	0	2	0
10	B	74	0	0	0	0
All	All	5428	0	5064	19	0

The all-atom clashscore is defined as the number of clashes found per 1000 atoms (including hydrogen atoms). The all-atom clashscore for this structure is 2.

The worst 5 of 19 close contacts within the same asymmetric unit are listed below, sorted by their clash magnitude.

Atom-1	Atom-2	Interatomic distance (Å)	Clash overlap (Å)
2:B:28:ASP:HB2	7:B:205:EDO:H21	1.73	0.70
1:A:171:LYS:NZ	10:A:1504:HOH:O	2.33	0.62
1:A:13:ASN:ND2	1:A:15:ASP:OD1	2.37	0.57
2:B:101:LYS:HZ3	3:B:203:PEG:H32	1.75	0.52
1:A:475:ARG:HH11	1:A:475:ARG:HG3	1.75	0.50

There are no symmetry-related clashes.

5.3 Torsion angles [i](#)

5.3.1 Protein backbone [i](#)

In the following table, the Percentiles column shows the percent Ramachandran outliers of the chain as a percentile score with respect to all X-ray entries followed by that with respect to entries of similar resolution.

The Analysed column shows the number of residues for which the backbone conformation was analysed, and the total number of residues.

Mol	Chain	Analysed	Favoured	Allowed	Outliers	Percentiles	
1	A	523/520 (101%)	511 (98%)	12 (2%)	0	100	100
2	B	124/136 (91%)	123 (99%)	1 (1%)	0	100	100
All	All	647/656 (99%)	634 (98%)	13 (2%)	0	100	100

There are no Ramachandran outliers to report.

5.3.2 Protein sidechains [i](#)

In the following table, the Percentiles column shows the percent sidechain outliers of the chain as a percentile score with respect to all X-ray entries followed by that with respect to entries of similar resolution.

The Analysed column shows the number of residues for which the sidechain conformation was analysed, and the total number of residues.

Mol	Chain	Analysed	Rotameric	Outliers	Percentiles	
1	A	413/414 (100%)	413 (100%)	0	100	100
2	B	95/105 (90%)	95 (100%)	0	100	100
All	All	508/519 (98%)	508 (100%)	0	100	100

There are no protein residues with a non-rotameric sidechain to report.

Sometimes sidechains can be flipped to improve hydrogen bonding and reduce clashes. All (3) such sidechains are listed below:

Mol	Chain	Res	Type
1	A	19	ASN
1	A	326	GLN
2	B	59	HIS

5.3.3 RNA [i](#)

There are no RNA molecules in this entry.

5.4 Non-standard residues in protein, DNA, RNA chains [i](#)

There are no non-standard protein/DNA/RNA residues in this entry.

5.5 Carbohydrates [i](#)

There are no oligosaccharides in this entry.

5.6 Ligand geometry [i](#)

24 ligands are modelled in this entry.

In the following table, the Counts columns list the number of bonds (or angles) for which Mogul statistics could be retrieved, the number of bonds (or angles) that are observed in the model and the number of bonds (or angles) that are defined in the Chemical Component Dictionary. The

Link column lists molecule types, if any, to which the group is linked. The Z score for a bond length (or angle) is the number of standard deviations the observed value is removed from the expected value. A bond length (or angle) with $|Z| > 2$ is considered an outlier worth inspection. RMSZ is the root-mean-square of all Z scores of the bond lengths (or angles).

Mol	Type	Chain	Res	Link	Bond lengths			Bond angles		
					Counts	RMSZ	# Z > 2	Counts	RMSZ	# Z > 2
7	EDO	A	1419	-	3,3,3	0.47	0	2,2,2	0.36	0
9	DAL	B	204	-	5,5,5	1.06	1 (20%)	6,6,6	1.61	2 (33%)
7	EDO	A	1409	-	3,3,3	0.45	0	2,2,2	0.48	0
7	EDO	B	202	-	3,3,3	0.44	0	2,2,2	0.37	0
7	EDO	B	205	-	3,3,3	0.40	0	2,2,2	0.43	0
7	EDO	A	1418	-	3,3,3	0.50	0	2,2,2	0.19	0
7	EDO	A	1416	-	3,3,3	0.47	0	2,2,2	0.25	0
4	PO4	A	1402	-	4,4,4	0.91	0	6,6,6	0.54	0
6	PGE	A	1404	-	9,9,9	0.32	0	8,8,8	0.31	0
5	GLY	A	1413	-	4,4,4	1.08	1 (25%)	3,4,4	1.81	2 (66%)
7	EDO	A	1410	-	3,3,3	0.51	0	2,2,2	0.24	0
3	PEG	A	1417	-	6,6,6	0.48	0	5,5,5	0.26	0
7	EDO	A	1414	-	3,3,3	0.44	0	2,2,2	0.48	0
8	PG4	A	1408	-	12,12,12	0.51	0	11,11,11	0.25	0
3	PEG	A	1401	-	6,6,6	0.49	0	5,5,5	0.38	0
7	EDO	A	1407	-	3,3,3	0.47	0	2,2,2	0.29	0
6	PGE	A	1411	-	9,9,9	0.44	0	8,8,8	0.38	0
6	PGE	A	1415	-	9,9,9	0.33	0	8,8,8	0.36	0
5	GLY	A	1403	-	4,4,4	1.06	0	3,4,4	1.57	1 (33%)
7	EDO	A	1405	-	3,3,3	0.44	0	2,2,2	0.43	0
7	EDO	A	1406	-	3,3,3	0.46	0	2,2,2	0.46	0
5	GLY	A	1412	-	4,4,4	1.12	1 (25%)	3,4,4	1.77	2 (66%)
7	EDO	B	201	-	3,3,3	0.49	0	2,2,2	0.31	0
3	PEG	B	203	-	6,6,6	0.48	0	5,5,5	0.36	0

In the following table, the Chirals column lists the number of chiral outliers, the number of chiral centers analysed, the number of these observed in the model and the number defined in the Chemical Component Dictionary. Similar counts are reported in the Torsion and Rings columns. '-' means no outliers of that kind were identified.

Mol	Type	Chain	Res	Link	Chirals	Torsions	Rings
7	EDO	A	1419	-	-	1/1/1/1	-
9	DAL	B	204	-	-	4/4/4/4	-
7	EDO	A	1409	-	-	1/1/1/1	-
7	EDO	B	202	-	-	1/1/1/1	-
7	EDO	B	205	-	-	0/1/1/1	-
7	EDO	A	1418	-	-	1/1/1/1	-

Continued on next page...

Continued from previous page...

Mol	Type	Chain	Res	Link	Chirals	Torsions	Rings
7	EDO	A	1416	-	-	0/1/1/1	-
6	PGE	A	1404	-	-	5/7/7/7	-
5	GLY	A	1413	-	-	0/2/2/2	-
7	EDO	A	1410	-	-	0/1/1/1	-
3	PEG	A	1417	-	-	2/4/4/4	-
7	EDO	A	1414	-	-	0/1/1/1	-
8	PG4	A	1408	-	-	7/10/10/10	-
3	PEG	A	1401	-	-	2/4/4/4	-
7	EDO	A	1407	-	-	0/1/1/1	-
6	PGE	A	1411	-	-	3/7/7/7	-
6	PGE	A	1415	-	-	3/7/7/7	-
5	GLY	A	1403	-	-	0/2/2/2	-
7	EDO	A	1405	-	-	0/1/1/1	-
7	EDO	A	1406	-	-	0/1/1/1	-
5	GLY	A	1412	-	-	2/2/2/2	-
7	EDO	B	201	-	-	0/1/1/1	-
3	PEG	B	203	-	-	3/4/4/4	-

All (3) bond length outliers are listed below:

Mol	Chain	Res	Type	Atoms	Z	Observed(Å)	Ideal(Å)
9	B	204	DAL	OXT-C	-2.20	1.23	1.30
5	A	1412	GLY	OXT-C	-2.14	1.23	1.30
5	A	1413	GLY	OXT-C	-2.06	1.24	1.30

The worst 5 of 7 bond angle outliers are listed below:

Mol	Chain	Res	Type	Atoms	Z	Observed(°)	Ideal(°)
9	B	204	DAL	OXT-C-O	-3.17	116.89	124.08
5	A	1413	GLY	OXT-C-O	-2.27	117.48	123.33
5	A	1412	GLY	OXT-C-O	-2.19	117.70	123.33
5	A	1413	GLY	OXT-C-CA	2.12	121.83	113.38
9	B	204	DAL	OXT-C-CA	2.11	121.05	113.79

There are no chirality outliers.

5 of 35 torsion outliers are listed below:

Mol	Chain	Res	Type	Atoms
5	A	1412	GLY	O-C-CA-N
5	A	1412	GLY	OXT-C-CA-N

Continued on next page...

Continued from previous page...

Mol	Chain	Res	Type	Atoms
6	A	1415	PGE	O2-C3-C4-O3
6	A	1404	PGE	O2-C3-C4-O3
6	A	1404	PGE	O1-C1-C2-O2

There are no ring outliers.

3 monomers are involved in 4 short contacts:

Mol	Chain	Res	Type	Clashes	Symm-Clashes
7	B	205	EDO	2	0
6	A	1404	PGE	1	0
3	B	203	PEG	1	0

5.7 Other polymers [i](#)

There are no such residues in this entry.

5.8 Polymer linkage issues [i](#)

There are no chain breaks in this entry.

6 Fit of model and data [i](#)

6.1 Protein, DNA and RNA chains [i](#)

In the following table, the column labelled ‘#RSRZ> 2’ contains the number (and percentage) of RSRZ outliers, followed by percent RSRZ outliers for the chain as percentile scores relative to all X-ray entries and entries of similar resolution. The OWAB column contains the minimum, median, 95th percentile and maximum values of the occupancy-weighted average B-factor per residue. The column labelled ‘Q< 0.9’ lists the number of (and percentage) of residues with an average occupancy less than 0.9.

Mol	Chain	Analysed	<RSRZ>	#RSRZ>2	OWAB(Å ²)	Q<0.9
1	A	517/520 (99%)	-0.48	5 (0%) 79 78	14, 28, 53, 72	8 (1%)
2	B	125/136 (91%)	-0.57	2 (1%) 70 68	16, 27, 41, 65	1 (0%)
All	All	642/656 (97%)	-0.50	7 (1%) 78 77	14, 28, 53, 72	9 (1%)

The worst 5 of 7 RSRZ outliers are listed below:

Mol	Chain	Res	Type	RSRZ
2	B	136	ASN	3.9
1	A	3	ILE	3.1
1	A	517	HIS	2.3
1	A	342[A]	TYR	2.1
2	B	12	SER	2.1

6.2 Non-standard residues in protein, DNA, RNA chains [i](#)

There are no non-standard protein/DNA/RNA residues in this entry.

6.3 Carbohydrates [i](#)

There are no oligosaccharides in this entry.

6.4 Ligands [i](#)

In the following table, the Atoms column lists the number of modelled atoms in the group and the number defined in the chemical component dictionary. The B-factors column lists the minimum, median, 95th percentile and maximum values of B factors of atoms in the group. The column labelled ‘Q< 0.9’ lists the number of atoms with occupancy less than 0.9.

Mol	Type	Chain	Res	Atoms	RSCC	RSR	B-factors(\AA^2)	Q<0.9
7	EDO	B	201	4/4	0.72	0.20	42,46,58,65	0
7	EDO	A	1409	4/4	0.74	0.16	46,52,53,54	0
6	PGE	A	1411	10/10	0.75	0.19	29,51,56,57	0
3	PEG	A	1417	7/7	0.79	0.15	48,54,59,64	0
7	EDO	B	202	4/4	0.80	0.17	47,52,54,57	0
3	PEG	B	203	7/7	0.81	0.14	56,60,70,72	0
7	EDO	A	1406	4/4	0.82	0.13	47,55,56,62	0
6	PGE	A	1415	10/10	0.83	0.15	44,60,65,65	0
9	DAL	B	204	6/6	0.83	0.16	46,48,55,57	0
7	EDO	A	1419	4/4	0.84	0.12	45,46,50,54	0
7	EDO	A	1416	4/4	0.86	0.13	54,59,61,63	0
7	EDO	A	1418	4/4	0.86	0.15	53,53,58,67	0
7	EDO	B	205	4/4	0.86	0.17	39,48,48,54	0
7	EDO	A	1414	4/4	0.86	0.12	46,48,49,53	0
5	GLY	A	1403	5/5	0.87	0.13	41,53,56,58	0
8	PG4	A	1408	13/13	0.87	0.11	38,53,61,66	0
5	GLY	A	1412	5/5	0.87	0.12	54,58,61,72	0
7	EDO	A	1405	4/4	0.88	0.16	52,54,55,56	0
3	PEG	A	1401	7/7	0.88	0.11	44,49,60,63	0
5	GLY	A	1413	5/5	0.88	0.11	47,50,58,62	0
7	EDO	A	1410	4/4	0.90	0.12	45,46,49,54	0
7	EDO	A	1407	4/4	0.90	0.13	52,53,55,58	0
6	PGE	A	1404	10/10	0.92	0.09	34,43,53,59	0
4	PO4	A	1402	5/5	1.00	0.03	19,21,22,23	0

6.5 Other polymers [i](#)

There are no such residues in this entry.