



# wwPDB X-ray Structure Validation Summary Report ⓘ

Mar 5, 2026 – 06:42 PM UTC

PDB ID : 1DE6 / pdb\_00001de6  
Title : L-RHAMNOSE ISOMERASE  
Authors : Korndorfer, I.P.; Fessner, W.D.; Matthews, B.W.  
Deposited on : 1999-11-13  
Resolution : 2.10 Å(reported)

This is a wwPDB X-ray Structure Validation Summary Report for a publicly released PDB entry.

We welcome your comments at [validation@mail.wwpdb.org](mailto:validation@mail.wwpdb.org)

A user guide is available at

<https://www.wwpdb.org/validation/2017/XrayValidationReportHelp>

with specific help available everywhere you see the ⓘ symbol.

The types of validation reports are described at

<http://www.wwpdb.org/validation/2017/FAQs#types>.

---

The following versions of software and data (see [references ⓘ](#)) were used in the production of this report:

MolProbity : 4-5-2 with Phenix2.0  
Mogul : 2022.3.0, CSD as543be (2022)  
Xtriage (Phenix) : 2.0  
EDS : 3.0  
Percentile statistics : 20250101.v01 (using entries in the PDB archive January 1st 2025)  
CCP4 : 9.0.010 (Gargrove)  
Density-Fitness : 1.0.12  
Ideal geometry (proteins) : Engh & Huber (2001)  
Ideal geometry (DNA, RNA) : Parkinson et al. (1996)  
Validation Pipeline (wwPDB-VP) : 2.49

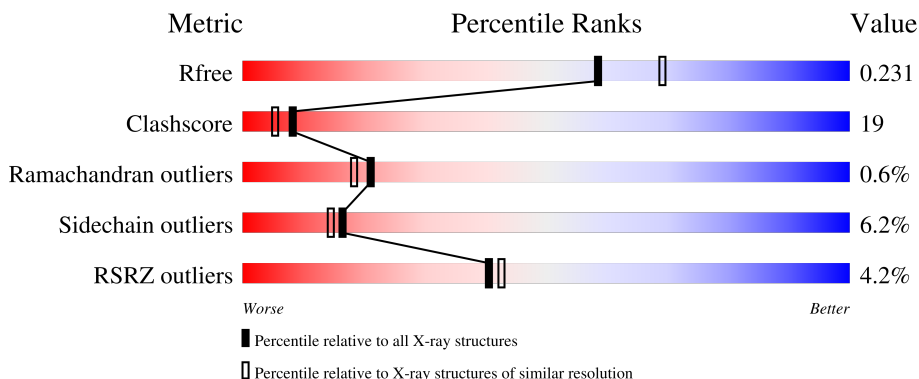
# 1 Overall quality at a glance

The following experimental techniques were used to determine the structure:

*X-RAY DIFFRACTION*

The reported resolution of this entry is 2.10 Å.

Percentile scores (ranging between 0-100) for global validation metrics of the entry are shown in the following graphic. The table shows the number of entries on which the scores are based.



Metric	Whole archive (#Entries)	Similar resolution (#Entries, resolution range(Å))
$R_{free}$	180053	6658 (2.10-2.10)
Clashscore	190562	7164 (2.10-2.10)
Ramachandran outliers	187476	7099 (2.10-2.10)
Sidechain outliers	187428	7100 (2.10-2.10)
RSRZ outliers	180081	6662 (2.10-2.10)

The table below summarises the geometric issues observed across the polymeric chains and their fit to the electron density. The red, orange, yellow and green segments of the lower bar indicate the fraction of residues that contain outliers for  $\geq 3$ , 2, 1 and 0 types of geometric quality criteria respectively. A grey segment represents the fraction of residues that are not modelled. The numeric value for each fraction is indicated below the corresponding segment, with a dot representing fractions  $\leq 5\%$ . The upper red bar (where present) indicates the fraction of residues that have poor fit to the electron density. The numeric value is given above the bar.

Mol	Chain	Length	Quality of chain
1	A	426	
1	B	426	
1	C	426	
1	D	426	

## 2 Entry composition

There are 5 unique types of molecules in this entry. The entry contains 14331 atoms, of which 0 are hydrogens and 0 are deuteriums.

In the tables below, the ZeroOcc column contains the number of atoms modelled with zero occupancy, the AltConf column contains the number of residues with at least one atom in alternate conformation and the Trace column contains the number of residues modelled with at most 2 atoms.

- Molecule 1 is a protein called L-RHAMNOSE ISOMERASE.

Mol	Chain	Residues	Atoms					ZeroOcc	AltConf	Trace
			Total	C	N	O	S			
1	A	416	3309	2090	587	619	13	0	0	0
1	B	416	3309	2090	587	619	13	0	0	0
1	C	416	3309	2090	587	619	13	0	0	0
1	D	416	3309	2090	587	619	13	0	0	0

There are 28 discrepancies between the modelled and reference sequences:

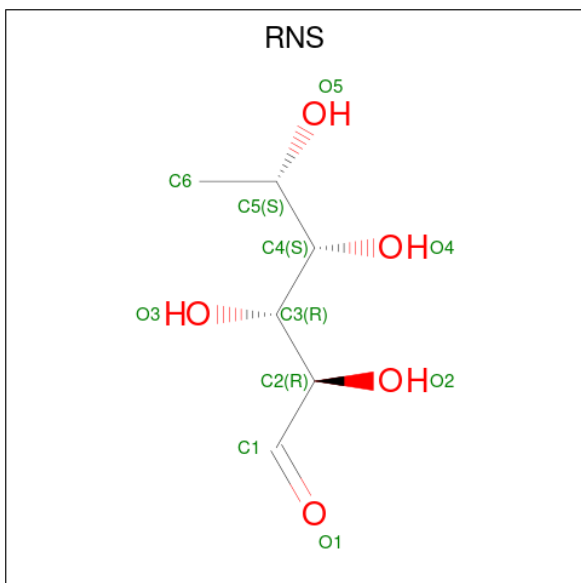
Chain	Residue	Modelled	Actual	Comment	Reference
A	2	GLY	-	expression tag	UNP P32170
A	3	HIS	-	expression tag	UNP P32170
A	4	HIS	-	expression tag	UNP P32170
A	5	HIS	-	expression tag	UNP P32170
A	6	HIS	-	expression tag	UNP P32170
A	7	HIS	-	expression tag	UNP P32170
A	8	HIS	-	expression tag	UNP P32170
B	2	GLY	-	expression tag	UNP P32170
B	3	HIS	-	expression tag	UNP P32170
B	4	HIS	-	expression tag	UNP P32170
B	5	HIS	-	expression tag	UNP P32170
B	6	HIS	-	expression tag	UNP P32170
B	7	HIS	-	expression tag	UNP P32170
B	8	HIS	-	expression tag	UNP P32170
C	2	GLY	-	expression tag	UNP P32170
C	3	HIS	-	expression tag	UNP P32170
C	4	HIS	-	expression tag	UNP P32170
C	5	HIS	-	expression tag	UNP P32170
C	6	HIS	-	expression tag	UNP P32170
C	7	HIS	-	expression tag	UNP P32170
C	8	HIS	-	expression tag	UNP P32170

*Continued on next page...*

Continued from previous page...

Chain	Residue	Modelled	Actual	Comment	Reference
D	2	GLY	-	expression tag	UNP P32170
D	3	HIS	-	expression tag	UNP P32170
D	4	HIS	-	expression tag	UNP P32170
D	5	HIS	-	expression tag	UNP P32170
D	6	HIS	-	expression tag	UNP P32170
D	7	HIS	-	expression tag	UNP P32170
D	8	HIS	-	expression tag	UNP P32170

- Molecule 2 is L-RHAMNOSE (CCD ID: RNS) (formula: C<sub>6</sub>H<sub>12</sub>O<sub>5</sub>).



Mol	Chain	Residues	Atoms	ZeroOcc	AltConf
2	A	1	Total C O 11 6 5	0	0
2	B	1	Total C O 11 6 5	0	0
2	C	1	Total C O 11 6 5	0	0
2	D	1	Total C O 11 6 5	0	0

- Molecule 3 is ZINC ION (CCD ID: ZN) (formula: Zn).

Mol	Chain	Residues	Atoms	ZeroOcc	AltConf
3	A	1	Total Zn 1 1	0	0

Continued on next page...

*Continued from previous page...*

Mol	Chain	Residues	Atoms	ZeroOcc	AltConf
3	B	1	Total Zn 1 1	0	0
3	C	1	Total Zn 1 1	0	0
3	D	1	Total Zn 1 1	0	0

- Molecule 4 is MANGANESE (II) ION (CCD ID: MN) (formula: Mn).

Mol	Chain	Residues	Atoms	ZeroOcc	AltConf
4	A	1	Total Mn 1 1	0	0
4	B	1	Total Mn 1 1	0	0
4	C	1	Total Mn 1 1	0	0
4	D	1	Total Mn 1 1	0	0

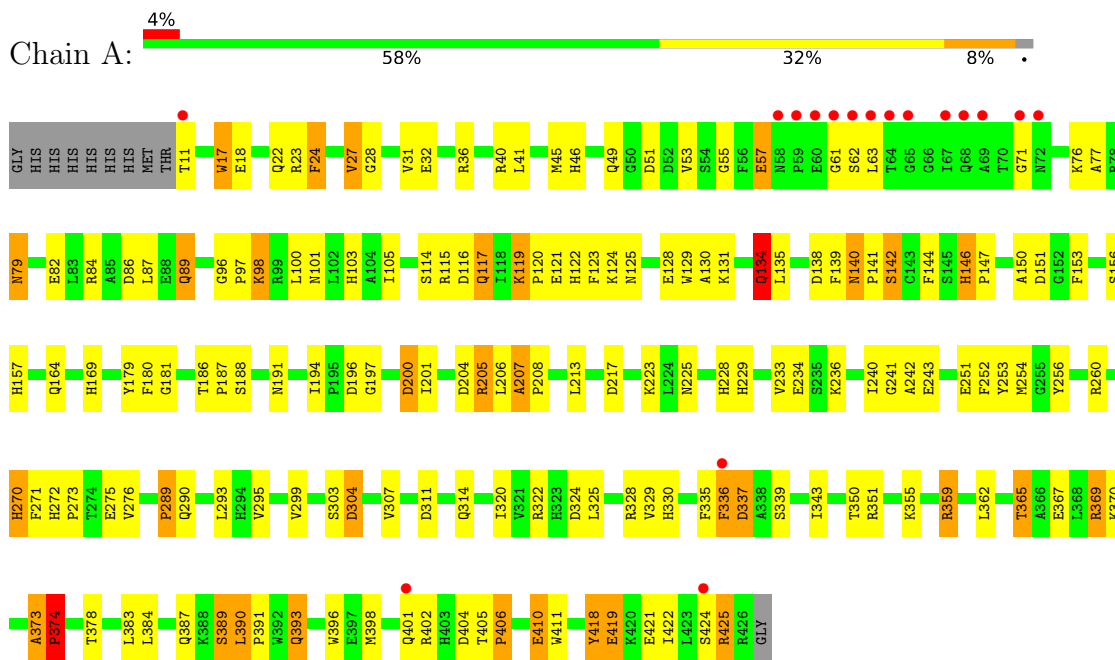
- Molecule 5 is water.

Mol	Chain	Residues	Atoms	ZeroOcc	AltConf
5	A	250	Total O 250 250	0	0
5	B	286	Total O 286 286	0	0
5	C	263	Total O 263 263	0	0
5	D	244	Total O 244 244	0	0

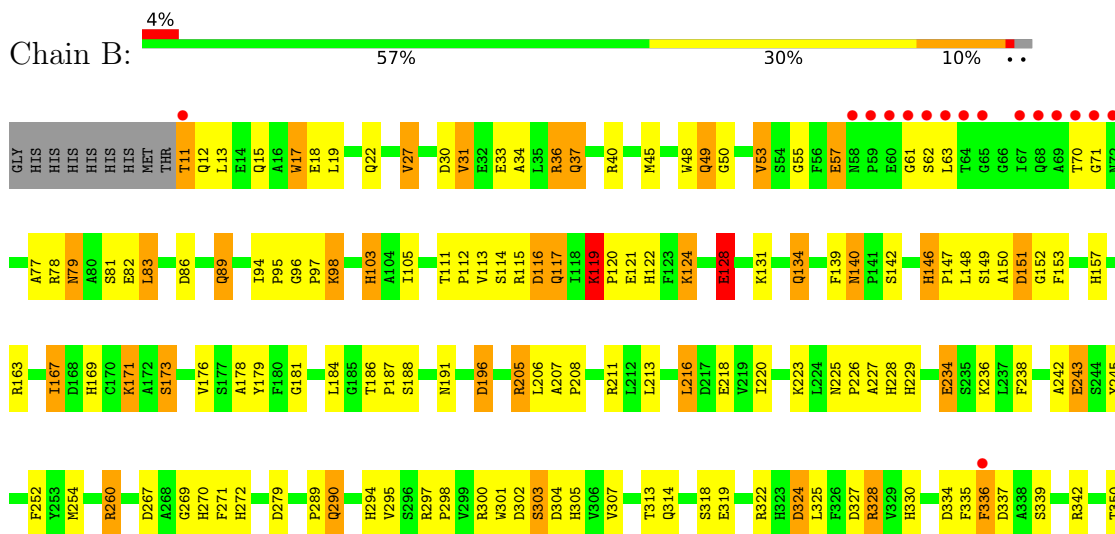
### 3 Residue-property plots [i](#)

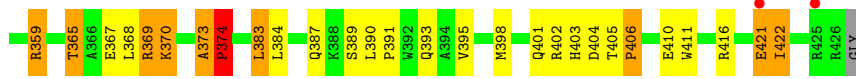
These plots are drawn for all protein, RNA, DNA and oligosaccharide chains in the entry. The first graphic for a chain summarises the proportions of the various outlier classes displayed in the second graphic. The second graphic shows the sequence view annotated by issues in geometry and electron density. Residues are color-coded according to the number of geometric quality criteria for which they contain at least one outlier: green = 0, yellow = 1, orange = 2 and red = 3 or more. A red dot above a residue indicates a poor fit to the electron density ( $RSRZ > 2$ ). Stretches of 2 or more consecutive residues without any outlier are shown as a green connector. Residues present in the sample, but not in the model, are shown in grey.

#### • Molecule 1: L-RHAMNOSE ISOMERASE

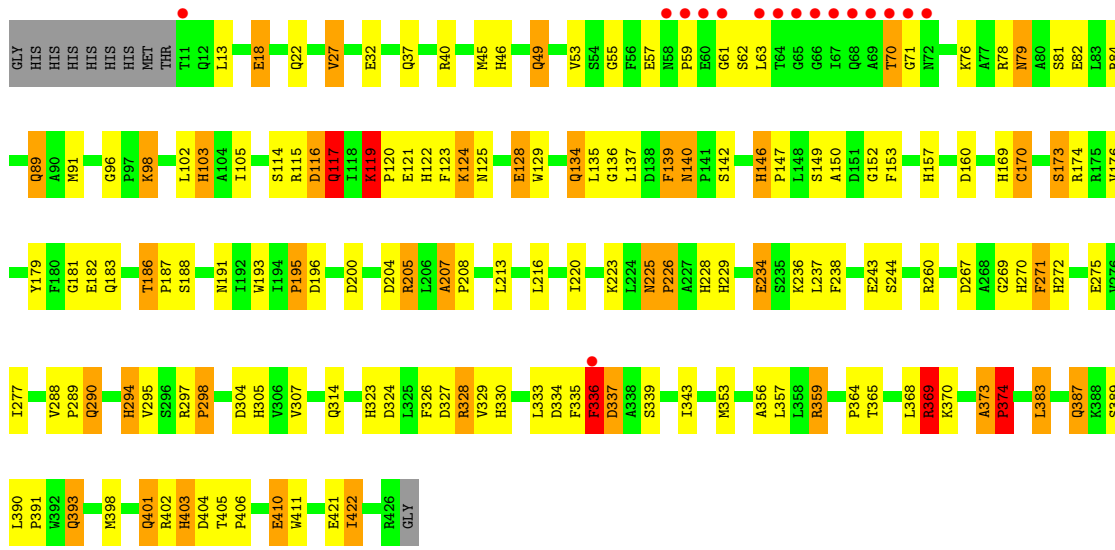


#### • Molecule 1: L-RHAMNOSE ISOMERASE

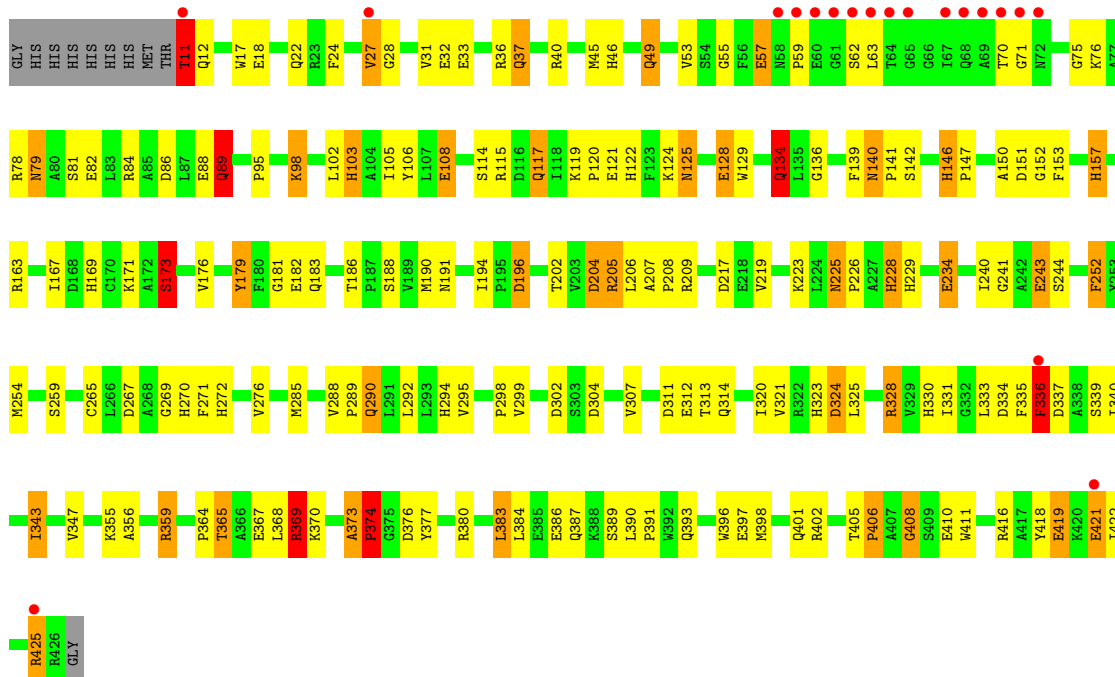




• Molecule 1: L-RHAMNOSE ISOMERASE



• Molecule 1: L-RHAMNOSE ISOMERASE



## 4 Data and refinement statistics

Property	Value	Source
Space group	C 1 2 1	Depositor
Cell constants a, b, c, $\alpha$ , $\beta$ , $\gamma$	169.18Å 162.44Å 77.73Å 90.00° 109.89° 90.00°	Depositor
Resolution (Å)	30.00 – 2.10 30.00 – 2.10	Depositor EDS
% Data completeness (in resolution range)	87.0 (30.00-2.10) 92.2 (30.00-2.10)	Depositor EDS
$R_{merge}$	0.13	Depositor
$R_{sym}$	(Not available)	Depositor
$\langle I/\sigma(I) \rangle$ <sup>1</sup>	1.80 (at 2.10Å)	Xtrriage
Refinement program	TNT	Depositor
R, $R_{free}$	0.244 , 0.244 0.172 , 0.231	Depositor DCC
$R_{free}$ test set	5391 reflections (5.10%)	wwPDB-VP
Wilson B-factor (Å <sup>2</sup> )	22.9	Xtrriage
Anisotropy	0.106	Xtrriage
Bulk solvent $k_{sol}$ (e/Å <sup>3</sup> ), $B_{sol}$ (Å <sup>2</sup> )	0.39 , 112.1	EDS
L-test for twinning <sup>2</sup>	$\langle  L  \rangle = 0.49$ , $\langle L^2 \rangle = 0.32$	Xtrriage
Estimated twinning fraction	No twinning to report.	Xtrriage
$F_o, F_c$ correlation	0.95	EDS
Total number of atoms	14331	wwPDB-VP
Average B, all atoms (Å <sup>2</sup> )	29.0	wwPDB-VP

Xtrriage's analysis on translational NCS is as follows: *The largest off-origin peak in the Patterson function is 3.67% of the height of the origin peak. No significant pseudotranslation is detected.*

<sup>1</sup>Intensities estimated from amplitudes.

<sup>2</sup>Theoretical values of  $\langle |L| \rangle$ ,  $\langle L^2 \rangle$  for acentric reflections are 0.5, 0.333 respectively for untwinned datasets, and 0.375, 0.2 for perfectly twinned datasets.

## 5 Model quality [i](#)

### 5.1 Standard geometry [i](#)

Bond lengths and bond angles in the following residue types are not validated in this section: RNS, MN, ZN

The Z score for a bond length (or angle) is the number of standard deviations the observed value is removed from the expected value. A bond length (or angle) with  $|Z| > 5$  is considered an outlier worth inspection. RMSZ is the root-mean-square of all Z scores of the bond lengths (or angles).

Mol	Chain	Bond lengths		Bond angles	
		RMSZ	# Z  >5	RMSZ	# Z  >5
1	A	1.58	21/3389 (0.6%)	1.92	79/4602 (1.7%)
1	B	1.60	22/3389 (0.6%)	1.96	79/4602 (1.7%)
1	C	1.57	16/3389 (0.5%)	1.93	71/4602 (1.5%)
1	D	1.55	13/3389 (0.4%)	1.94	90/4602 (2.0%)
All	All	1.58	72/13556 (0.5%)	1.94	319/18408 (1.7%)

The worst 5 of 72 bond length outliers are listed below:

Mol	Chain	Res	Type	Atoms	Z	Observed(Å)	Ideal(Å)
1	C	374	PRO	CA-C	-8.95	1.43	1.52
1	B	272	HIS	ND1-CE1	8.53	1.41	1.32
1	A	272	HIS	ND1-CE1	8.26	1.40	1.32
1	B	374	PRO	CA-C	-8.23	1.44	1.52
1	C	272	HIS	ND1-CE1	7.85	1.40	1.32

The worst 5 of 319 bond angle outliers are listed below:

Mol	Chain	Res	Type	Atoms	Z	Observed(°)	Ideal(°)
1	C	205	ARG	NE-CZ-NH2	-13.03	107.48	119.20
1	C	374	PRO	CA-N-CD	-9.96	98.06	112.00
1	B	359	ARG	NE-CZ-NH2	-9.67	110.50	119.20
1	C	294	HIS	CA-CB-CG	-9.53	104.27	113.80
1	B	272	HIS	CB-CG-CD2	-9.27	119.15	131.20

There are no chirality outliers.

There are no planarity outliers.

## 5.2 Too-close contacts

In the following table, the Non-H and H(model) columns list the number of non-hydrogen atoms and hydrogen atoms in the chain respectively. The H(added) column lists the number of hydrogen atoms added and optimized by MolProbity. The Clashes column lists the number of clashes within the asymmetric unit, whereas Symm-Clashes lists symmetry-related clashes.

Mol	Chain	Non-H	H(model)	H(added)	Clashes	Symm-Clashes
1	A	3309	0	3231	123	0
1	B	3309	0	3231	135	0
1	C	3309	0	3231	133	0
1	D	3309	0	3231	141	0
2	A	11	0	11	4	0
2	B	11	0	12	0	0
2	C	11	0	12	2	0
2	D	11	0	12	0	0
3	A	1	0	0	0	0
3	B	1	0	0	0	0
3	C	1	0	0	0	0
3	D	1	0	0	0	0
4	A	1	0	0	0	0
4	B	1	0	0	0	0
4	C	1	0	0	0	0
4	D	1	0	0	0	0
5	A	250	0	0	11	0
5	B	286	0	0	15	0
5	C	263	0	0	9	0
5	D	244	0	0	8	0
All	All	14331	0	12971	507	0

The all-atom clashscore is defined as the number of clashes found per 1000 atoms (including hydrogen atoms). The all-atom clashscore for this structure is 19.

The worst 5 of 507 close contacts within the same asymmetric unit are listed below, sorted by their clash magnitude.

Atom-1	Atom-2	Interatomic distance (Å)	Clash overlap (Å)
1:A:421:GLU:HG3	1:A:422:ILE:HG12	1.31	1.13
1:B:398:MET:HE2	1:B:402:ARG:HE	1.11	1.12
1:D:398:MET:HE2	1:D:402:ARG:HE	1.13	1.12
1:C:398:MET:HE2	1:C:402:ARG:HE	1.08	1.12
1:A:398:MET:HE2	1:A:402:ARG:HE	1.11	1.06

There are no symmetry-related clashes.

## 5.3 Torsion angles [i](#)

### 5.3.1 Protein backbone [i](#)

In the following table, the Percentiles column shows the percent Ramachandran outliers of the chain as a percentile score with respect to all X-ray entries followed by that with respect to entries of similar resolution.

The Analysed column shows the number of residues for which the backbone conformation was analysed, and the total number of residues.

Mol	Chain	Analysed	Favoured	Allowed	Outliers	Percentiles	
1	A	414/426 (97%)	397 (96%)	15 (4%)	2 (0%)	24	22
1	B	414/426 (97%)	397 (96%)	14 (3%)	3 (1%)	18	15
1	C	414/426 (97%)	394 (95%)	17 (4%)	3 (1%)	18	15
1	D	414/426 (97%)	395 (95%)	17 (4%)	2 (0%)	24	22
All	All	1656/1704 (97%)	1583 (96%)	63 (4%)	10 (1%)	21	18

5 of 10 Ramachandran outliers are listed below:

Mol	Chain	Res	Type
1	A	62	SER
1	B	62	SER
1	C	62	SER
1	D	62	SER
1	C	59	PRO

### 5.3.2 Protein sidechains [i](#)

In the following table, the Percentiles column shows the percent sidechain outliers of the chain as a percentile score with respect to all X-ray entries followed by that with respect to entries of similar resolution.

The Analysed column shows the number of residues for which the sidechain conformation was analysed, and the total number of residues.

Mol	Chain	Analysed	Rotameric	Outliers	Percentiles	
1	A	351/359 (98%)	332 (95%)	19 (5%)	20	18
1	B	351/359 (98%)	330 (94%)	21 (6%)	17	15
1	C	351/359 (98%)	329 (94%)	22 (6%)	16	14
1	D	351/359 (98%)	326 (93%)	25 (7%)	13	11
All	All	1404/1436 (98%)	1317 (94%)	87 (6%)	16	14

5 of 87 residues with a non-rotameric sidechain are listed below:

Mol	Chain	Res	Type
1	C	369	ARG
1	D	117	GLN
1	C	383	LEU
1	D	57	GLU
1	D	173	SER

Sometimes sidechains can be flipped to improve hydrogen bonding and reduce clashes. 5 of 37 such sidechains are listed below:

Mol	Chain	Res	Type
1	C	393	GLN
1	D	314	GLN
1	D	49	GLN
1	D	125	ASN
1	B	122	HIS

### 5.3.3 RNA [i](#)

There are no RNA molecules in this entry.

## 5.4 Non-standard residues in protein, DNA, RNA chains [i](#)

There are no non-standard protein/DNA/RNA residues in this entry.

## 5.5 Carbohydrates [i](#)

There are no oligosaccharides in this entry.

## 5.6 Ligand geometry [i](#)

Of 12 ligands modelled in this entry, 8 are monoatomic - leaving 4 for Mogul analysis.

In the following table, the Counts columns list the number of bonds (or angles) for which Mogul statistics could be retrieved, the number of bonds (or angles) that are observed in the model and the number of bonds (or angles) that are defined in the Chemical Component Dictionary. The Link column lists molecule types, if any, to which the group is linked. The Z score for a bond length (or angle) is the number of standard deviations the observed value is removed from the expected value. A bond length (or angle) with  $|Z| > 2$  is considered an outlier worth inspection. RMSZ is the root-mean-square of all Z scores of the bond lengths (or angles).

Mol	Type	Chain	Res	Link	Bond lengths			Bond angles		
					Counts	RMSZ	# Z  > 2	Counts	RMSZ	# Z  > 2
2	RNS	B	2462	-	9,10,10	1.24	2 (22%)	12,13,13	1.21	1 (8%)
2	RNS	C	3462	-	9,10,10	1.13	1 (11%)	12,13,13	1.05	1 (8%)
2	RNS	D	4462	-	9,10,10	0.97	0	12,13,13	0.93	0
2	RNS	A	1462	4	9,10,10	1.05	1 (11%)	12,13,13	1.78	4 (33%)

In the following table, the Chirals column lists the number of chiral outliers, the number of chiral centers analysed, the number of these observed in the model and the number defined in the Chemical Component Dictionary. Similar counts are reported in the Torsion and Rings columns. '-' means no outliers of that kind were identified.

Mol	Type	Chain	Res	Link	Chirals	Torsions	Rings
2	RNS	B	2462	-	-	5/13/14/14	-
2	RNS	C	3462	-	-	7/13/14/14	-
2	RNS	D	4462	-	-	8/13/14/14	-
2	RNS	A	1462	4	-	5/13/14/14	-

All (4) bond length outliers are listed below:

Mol	Chain	Res	Type	Atoms	Z	Observed(Å)	Ideal(Å)
2	C	3462	RNS	O5-C5	2.64	1.50	1.43
2	B	2462	RNS	O5-C5	2.19	1.48	1.43
2	A	1462	RNS	O5-C5	2.08	1.48	1.43
2	B	2462	RNS	O3-C3	2.04	1.48	1.43

The worst 5 of 6 bond angle outliers are listed below:

Mol	Chain	Res	Type	Atoms	Z	Observed(°)	Ideal(°)
2	A	1462	RNS	O3-C3-C2	3.36	115.38	109.13
2	A	1462	RNS	O3-C3-C4	2.73	115.83	109.46
2	B	2462	RNS	C4-C3-C2	-2.68	108.79	113.49
2	C	3462	RNS	C4-C3-C2	-2.43	109.23	113.49
2	A	1462	RNS	O4-C4-C5	2.31	113.53	109.14

There are no chirality outliers.

5 of 25 torsion outliers are listed below:

Mol	Chain	Res	Type	Atoms
2	A	1462	RNS	C3-C4-C5-O5
2	B	2462	RNS	C3-C4-C5-C6
2	B	2462	RNS	C3-C4-C5-O5

*Continued on next page...*

*Continued from previous page...*

Mol	Chain	Res	Type	Atoms
2	B	2462	RNS	O4-C4-C5-O5
2	C	3462	RNS	C3-C4-C5-C6

There are no ring outliers.

2 monomers are involved in 6 short contacts:

Mol	Chain	Res	Type	Clashes	Symm-Clashes
2	C	3462	RNS	2	0
2	A	1462	RNS	4	0

## 5.7 Other polymers [i](#)

There are no such residues in this entry.

## 5.8 Polymer linkage issues [i](#)

There are no chain breaks in this entry.

## 6 Fit of model and data [i](#)

### 6.1 Protein, DNA and RNA chains [i](#)

In the following table, the column labelled ‘#RSRZ > 2’ contains the number (and percentage) of RSRZ outliers, followed by percent RSRZ outliers for the chain as percentile scores relative to all X-ray entries and entries of similar resolution. The OWAB column contains the minimum, median, 95<sup>th</sup> percentile and maximum values of the occupancy-weighted average B-factor per residue. The column labelled ‘Q < 0.9’ lists the number of (and percentage) of residues with an average occupancy less than 0.9.

Mol	Chain	Analysed	<RSRZ>	#RSRZ>2	OWAB(Å <sup>2</sup> )	Q<0.9
1	A	416/426 (97%)	-0.22	17 (4%) 41 43	15, 26, 52, 79	15 (3%)
1	B	416/426 (97%)	-0.36	18 (4%) 40 41	14, 23, 48, 76	15 (3%)
1	C	416/426 (97%)	-0.31	16 (3%) 44 46	15, 24, 50, 78	15 (3%)
1	D	416/426 (97%)	-0.19	19 (4%) 37 39	16, 27, 52, 80	15 (3%)
All	All	1664/1704 (97%)	-0.27	70 (4%) 40 42	14, 25, 51, 80	60 (3%)

The worst 5 of 70 RSRZ outliers are listed below:

Mol	Chain	Res	Type	RSRZ
1	A	59	PRO	6.2
1	A	69	ALA	5.9
1	A	67	ILE	5.9
1	B	67	ILE	5.7
1	D	61	GLY	5.6

### 6.2 Non-standard residues in protein, DNA, RNA chains [i](#)

There are no non-standard protein/DNA/RNA residues in this entry.

### 6.3 Carbohydrates [i](#)

There are no oligosaccharides in this entry.

### 6.4 Ligands [i](#)

In the following table, the Atoms column lists the number of modelled atoms in the group and the number defined in the chemical component dictionary. The B-factors column lists the minimum, median, 95<sup>th</sup> percentile and maximum values of B factors of atoms in the group. The column labelled ‘Q < 0.9’ lists the number of atoms with occupancy less than 0.9.

Mol	Type	Chain	Res	Atoms	RSCC	RSR	B-factors( $\text{\AA}^2$ )	Q<0.9
2	RNS	B	2462	11/11	0.85	0.19	13,24,42,56	11
2	RNS	C	3462	11/11	0.85	0.23	11,25,38,45	11
2	RNS	D	4462	11/11	0.85	0.18	4,19,30,37	11
2	RNS	A	1462	11/11	0.87	0.13	9,19,30,36	11
4	MN	D	451	1/1	0.91	0.09	60,60,60,60	0
4	MN	A	451	1/1	0.93	0.08	59,59,59,59	0
4	MN	C	451	1/1	0.95	0.07	51,51,51,51	0
4	MN	B	451	1/1	0.96	0.07	53,53,53,53	0
3	ZN	C	450	1/1	0.98	0.04	36,36,36,36	0
3	ZN	D	450	1/1	0.98	0.04	41,41,41,41	0
3	ZN	B	450	1/1	0.98	0.03	34,34,34,34	0
3	ZN	A	450	1/1	0.99	0.04	36,36,36,36	0

## 6.5 Other polymers [\(i\)](#)

There are no such residues in this entry.