



wwPDB EM Validation Summary Report ⓘ

Jun 27, 2026 – 02:01 PM EDT

PDB ID : 9DEI / pdb_00009dei
EMDB ID : EMD-46791
Title : Trypanosoma brucei mitochondrial RNA-editing catalytic complex 1, U-deletion (RECC1)
Authors : Liu, Y.T.; Jih, J.; Zhou, Z.H.; Aphasizhev, R.
Deposited on : 2024-08-29
Resolution : 2.99 Å(reported)

This is a wwPDB EM Validation Summary Report for a publicly released PDB entry.

We welcome your comments at validation@mail.wwpdb.org

A user guide is available at

<https://www.wwpdb.org/validation/2017/EMValidationReportHelp>

with specific help available everywhere you see the ⓘ symbol.

The types of validation reports are described at

<http://www.wwpdb.org/validation/2017/FAQs#types>.

The following versions of software and data (see [references ⓘ](#)) were used in the production of this report:

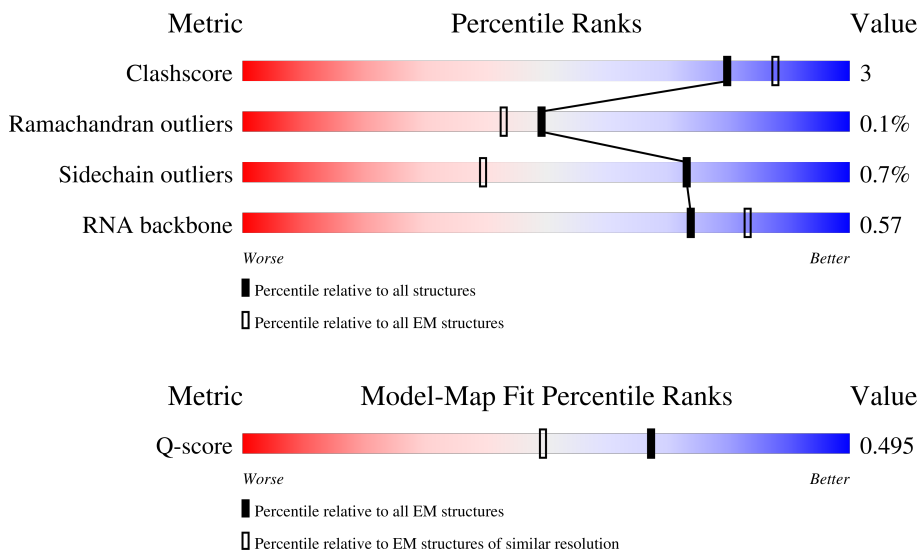
EMDB validation analysis : 0.0.1.dev133
Mogul : 2022.3.0, CSD as543be (2022)
MolProbity : 4-5-2 with Phenix2.0
Buster-report : wwPDB partial adaption of 1.1.7 (2018)
Percentile statistics : 20250101.v01 (using entries in the PDB archive January 1st 2025)
EM percentile statistics : 202505.v01 (Using data in the EMDB archive up until May 2025)
MapQ : 1.9.13
Ideal geometry (proteins) : Engh & Huber (2001)
Ideal geometry (DNA, RNA) : Parkinson et al. (1996)
Validation Pipeline (wwPDB-VP) : 2.50

1 Overall quality at a glance

The following experimental techniques were used to determine the structure:
ELECTRON MICROSCOPY

The reported resolution of this entry is 2.99 Å.

Percentile scores (ranging between 0-100) for global validation metrics of the entry are shown in the following graphic. The table shows the number of entries on which the scores are based.



Metric	Whole archive (#Entries)	EM structures (#Entries)	Similar EM resolution (#Entries, resolution range(Å))
Clashscore	229148	23984	-
Ramachandran outliers	224038	23583	-
Sidechain outliers	223484	23102	-
RNA backbone	8273	3508	-
Q-score	-	25397	13287 (2.49 - 3.49)

The table below summarises the geometric issues observed across the polymeric chains and their fit to the map. The red, orange, yellow and green segments of the bar indicate the fraction of residues that contain outliers for ≥ 3 , 2, 1 and 0 types of geometric quality criteria respectively. A grey segment represents the fraction of residues that are not modelled. The numeric value for each fraction is indicated below the corresponding segment, with a dot representing fractions $\leq 5\%$. The upper red bar (where present) indicates the fraction of residues that have poor fit to the EM map (all-atom inclusion $< 40\%$). The numeric value is given above the bar.

Mol	Chain	Length	Quality of chain
1	A	384	
2	B	368	
3	C	818	

Continued on next page...

Continued from previous page...

Mol	Chain	Length	Quality of chain
4	D	414	 81% 6% 12%
5	E	164	 66% 30%
5	H	164	 67% 28%
5	J	164	 67% 5% 27%
5	M	164	 79% 19%
5	P	164	 67% 29%
6	F	393	 31% 67%
6	N	393	 34% 64%
7	G	587	 6% 26% 73%
7	K	587	 28% 69%
8	I	218	 6% 78% 9% 13%
9	L	169	 73% 11% 15%
10	O	762	 24% 74%
11	R	76	 11% 72% 24%

2 Entry composition [i](#)

There are 15 unique types of molecules in this entry. The entry contains 28120 atoms, of which 0 are hydrogens and 0 are deuteriums.

In the tables below, the AltConf column contains the number of residues with at least one atom in alternate conformation and the Trace column contains the number of residues modelled with at most 2 atoms.

- Molecule 1 is a protein called KREPB5; RNA-editing catalytic complex core protein, B5.

Mol	Chain	Residues	Atoms					AltConf	Trace
			Total	C	N	O	S		
1	A	374	2991	1887	546	539	19	0	0

- Molecule 2 is a protein called KREPB8; RNA editing catalytic complex core protein, B8.

Mol	Chain	Residues	Atoms					AltConf	Trace
			Total	C	N	O	S		
2	B	302	2466	1568	442	436	20	0	0

- Molecule 3 is a protein called MP90.

Mol	Chain	Residues	Atoms					AltConf	Trace
			Total	C	N	O	S		
3	C	521	4135	2618	732	765	20	0	0

- Molecule 4 is a protein called RNA editing complex protein MP46.

Mol	Chain	Residues	Atoms					AltConf	Trace
			Total	C	N	O	S		
4	D	365	2890	1808	530	536	16	0	0

There are 3 discrepancies between the modelled and reference sequences:

Chain	Residue	Modelled	Actual	Comment	Reference
D	207	PHE	LEU	conflict	UNP Q86MV9
D	228	ASP	GLY	conflict	UNP Q86MV9
D	324	ALA	VAL	conflict	UNP Q86MV9

- Molecule 5 is a protein called MP18 RNA editing complex protein, putative.

Mol	Chain	Residues	Atoms					AltConf	Trace
			Total	C	N	O	S		
5	E	114	895	567	155	170	3	0	0

Continued on next page...

Continued from previous page...

Mol	Chain	Residues	Atoms					AltConf	Trace
5	H	118	Total	C	N	O	S	0	0
			931	588	165	175	3		
5	J	119	Total	C	N	O	S	0	0
			936	589	166	176	5		
5	M	133	Total	C	N	O	S	0	0
			1034	651	182	196	5		
5	P	116	Total	C	N	O	S	0	0
			907	573	157	172	5		

- Molecule 6 is a protein called RNA-editing complex protein MP42.

Mol	Chain	Residues	Atoms					AltConf	Trace
6	F	129	Total	C	N	O	S	0	0
			1040	663	179	192	6		
6	N	142	Total	C	N	O	S	0	0
			1148	731	197	214	6		

- Molecule 7 is a protein called KREPA2.

Mol	Chain	Residues	Atoms					AltConf	Trace
7	G	159	Total	C	N	O	S	0	0
			1195	747	208	233	7		
7	K	184	Total	C	N	O	S	0	0
			1393	872	244	270	7		

- Molecule 8 is a protein called RNA editing complex protein.

Mol	Chain	Residues	Atoms					AltConf	Trace
8	I	190	Total	C	N	O	S	0	0
			1453	896	266	279	12		

- Molecule 9 is a protein called KREPA5.

Mol	Chain	Residues	Atoms					AltConf	Trace
9	L	143	Total	C	N	O	S	0	0
			1141	718	206	210	7		

- Molecule 10 is a protein called RNA-editing complex protein MP81.

Mol	Chain	Residues	Atoms					AltConf	Trace
10	O	196	Total	C	N	O	S	0	0
			1545	971	275	290	9		

There are 7 discrepancies between the modelled and reference sequences:

Chain	Residue	Modelled	Actual	Comment	Reference
O	9	ASP	GLY	conflict	UNP Q95W15
O	12	CYS	SER	conflict	UNP Q95W15
O	35	SER	ALA	conflict	UNP Q95W15
O	76	GLY	GLU	conflict	UNP Q95W15
O	244	GLY	GLU	conflict	UNP Q95W15
O	293	SER	PRO	conflict	UNP Q95W15
O	594	SER	ASN	conflict	UNP Q95W15

- Molecule 11 is a RNA chain called tRNA-valine (anticodon AAC).

Mol	Chain	Residues	Atoms					AltConf	Trace
			Total	C	N	O	P		
11	R	76	1621	722	285	538	76	0	0

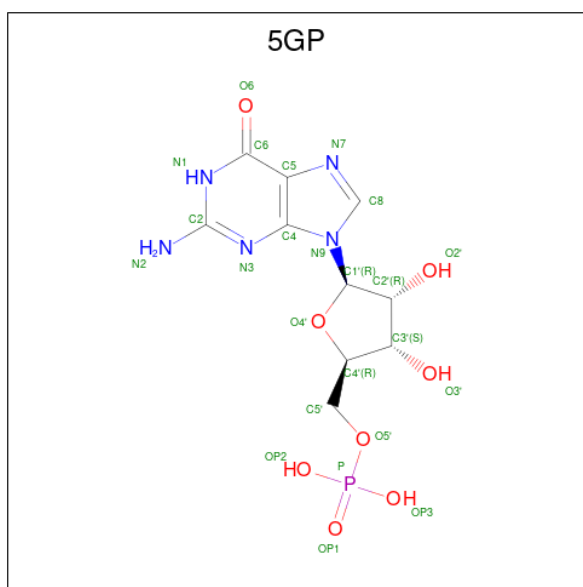
- Molecule 12 is ZINC ION (CCD ID: ZN) (formula: Zn).

Mol	Chain	Residues	Atoms		AltConf
12	B	1	Total	Zn	0
			1	1	
12	C	1	Total	Zn	0
			1	1	
12	D	1	Total	Zn	0
			1	1	
12	K	1	Total	Zn	0
			1	1	
12	O	1	Total	Zn	0
			1	1	

- Molecule 13 is MAGNESIUM ION (CCD ID: MG) (formula: Mg).

Mol	Chain	Residues	Atoms		AltConf
13	C	3	Total	Mg	0
			3	3	

- Molecule 14 is GUANOSINE-5'-MONOPHOSPHATE (CCD ID: 5GP) (formula: C₁₀H₁₄N₅O₈P).



Mol	Chain	Residues	Atoms					AltConf
			Total	C	N	O	P	
14	R	1	24	10	5	8	1	0

- Molecule 15 is water.

Mol	Chain	Residues	Atoms		AltConf
15	A	62	Total	O	0
			62	62	
15	B	56	Total	O	0
			56	56	
15	C	67	Total	O	0
			67	67	
15	D	16	Total	O	0
			16	16	
15	E	14	Total	O	0
			14	14	
15	F	15	Total	O	0
			15	15	
15	G	8	Total	O	0
			8	8	
15	H	9	Total	O	0
			9	9	
15	K	2	Total	O	0
			2	2	
15	M	16	Total	O	0
			16	16	
15	N	17	Total	O	0
			17	17	

Continued on next page...

Continued from previous page...

Mol	Chain	Residues	Atoms		AltConf
15	O	13	Total 13	O 13	0
15	P	5	Total 5	O 5	0
15	R	67	Total 67	O 67	0

3 Residue-property plots [i](#)


These plots are drawn for all protein, RNA, DNA and oligosaccharide chains in the entry. The first graphic for a chain summarises the proportions of the various outlier classes displayed in the second graphic. The second graphic shows the sequence view annotated by issues in geometry and atom inclusion in map density. Residues are color-coded according to the number of geometric quality criteria for which they contain at least one outlier: green = 0, yellow = 1, orange = 2 and red = 3 or more. A red diamond above a residue indicates a poor fit to the EM map for this residue (all-atom inclusion < 40%). Stretches of 2 or more consecutive residues without any outlier are shown as a green connector. Residues present in the sample, but not in the model, are shown in grey.

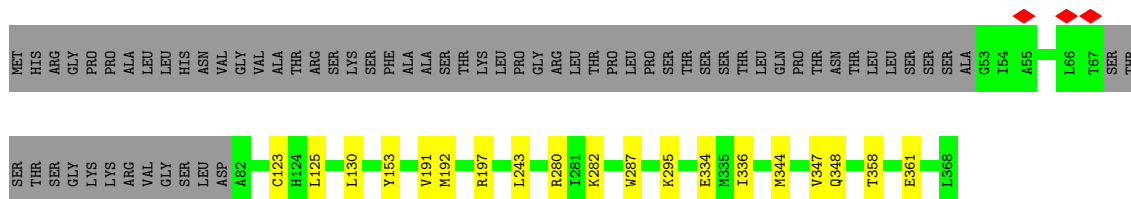
- Molecule 1: KREPB5; RNA-editing catalytic complex core protein, B5

Chain A: 



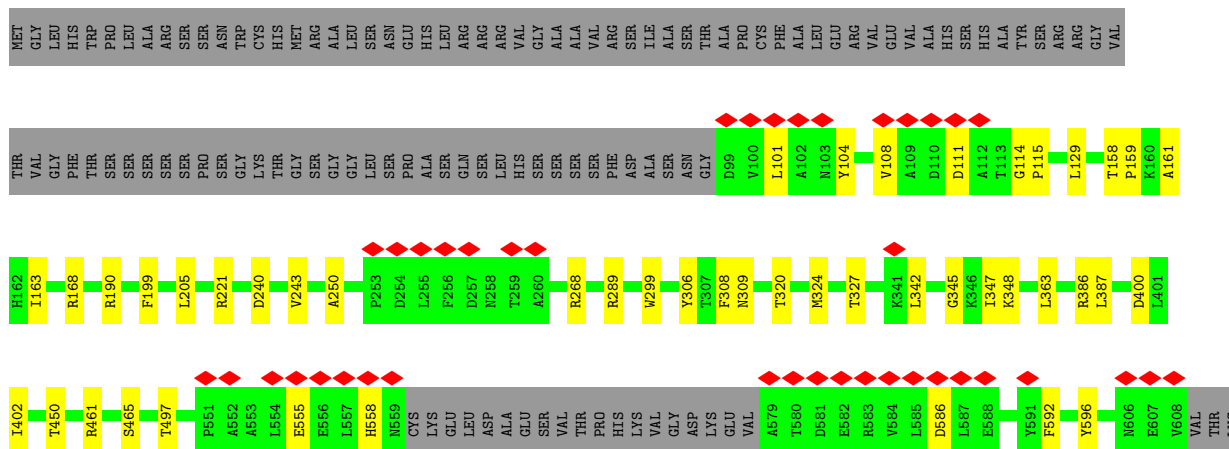
- Molecule 2: KREPB8; RNA editing catalytic complex core protein, B8

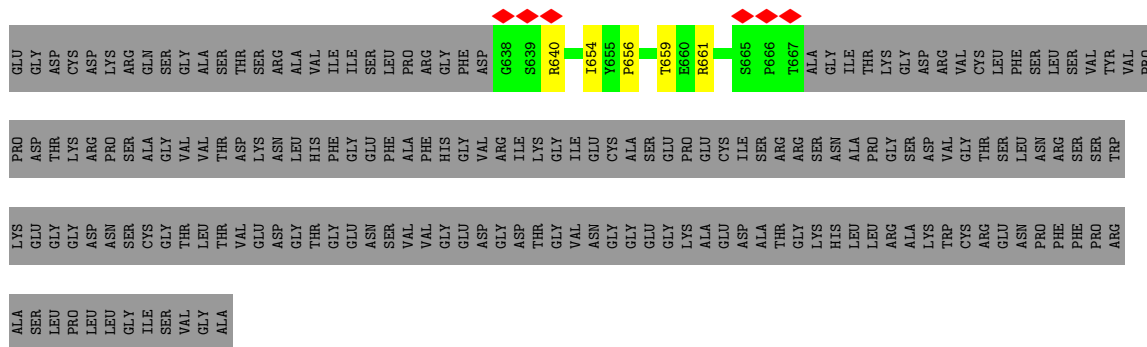
Chain B: 



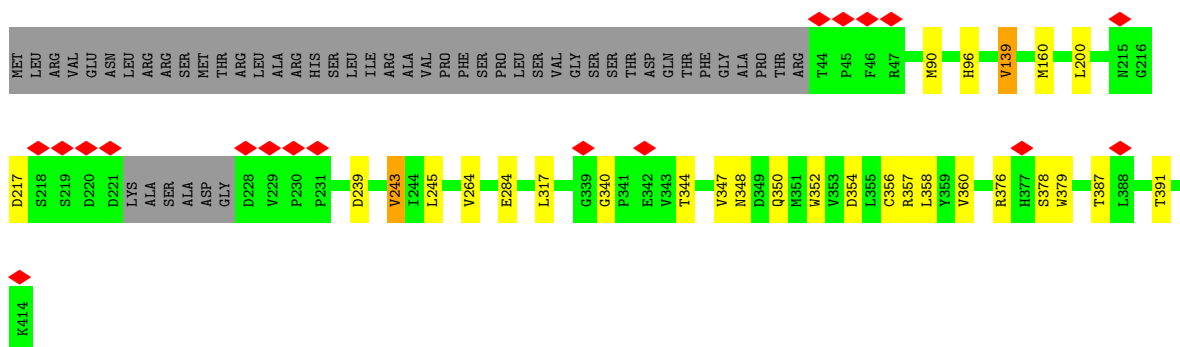
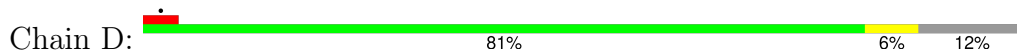
- Molecule 3: MP90

Chain C: 

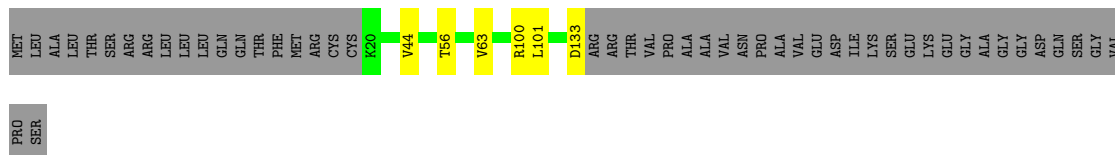




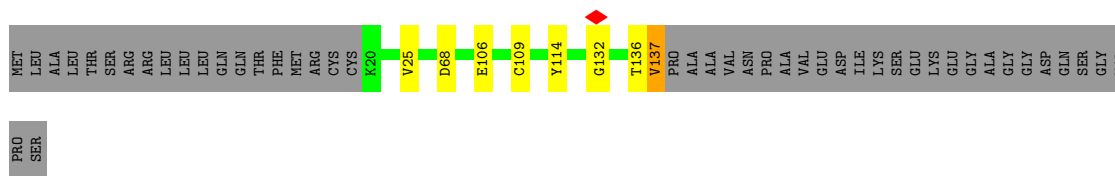
• Molecule 4: RNA editing complex protein MP46



• Molecule 5: MP18 RNA editing complex protein, putative



• Molecule 5: MP18 RNA editing complex protein, putative



• Molecule 5: MP18 RNA editing complex protein, putative



4 Experimental information

Property	Value	Source
EM reconstruction method	SINGLE PARTICLE	Depositor
Imposed symmetry	POINT, C1	Depositor
Number of particles used	452724	Depositor
Resolution determination method	FSC 0.143 CUT-OFF	Depositor
CTF correction method	PHASE FLIPPING AND AMPLITUDE CORRECTION	Depositor
Microscope	TFS KRIOS, TFS KRIOS	Depositor
Voltage (kV)	300, 300	Depositor
Electron dose ($e^-/\text{\AA}^2$)	45, 45	Depositor
Minimum defocus (nm)	1000, 600	Depositor
Maximum defocus (nm)	3000, 2800	Depositor
Magnification	81000, 130000	Depositor
Image detector	GATAN K3 BIOQUANTUM (6k x 4k), FEI FALCON IV (4k x 4k)	Depositor
Maximum map value	71.537	Depositor
Minimum map value	-39.675	Depositor
Average map value	0.007	Depositor
Map value standard deviation	1.084	Depositor
Recommended contour level	3.5	Depositor
Map size (\AA)	422.40002, 422.40002, 422.40002	wwPDB
Map dimensions	384, 384, 384	wwPDB
Map angles ($^\circ$)	90.0, 90.0, 90.0	wwPDB
Pixel spacing (\AA)	1.1, 1.1, 1.1	Depositor

5 Model quality [i](#)

5.1 Standard geometry [i](#)

Bond lengths and bond angles in the following residue types are not validated in this section: ZN, 5GP, MG

The Z score for a bond length (or angle) is the number of standard deviations the observed value is removed from the expected value. A bond length (or angle) with $|Z| > 5$ is considered an outlier worth inspection. RMSZ is the root-mean-square of all Z scores of the bond lengths (or angles).

Mol	Chain	Bond lengths		Bond angles	
		RMSZ	# Z >5	RMSZ	# Z >5
1	A	0.14	0/3054	0.35	0/4132
2	B	0.15	0/2530	0.34	0/3421
3	C	0.13	0/4226	0.34	0/5746
4	D	0.16	0/2951	0.34	0/3998
5	E	0.13	0/916	0.35	0/1248
5	H	0.13	0/952	0.34	0/1296
5	J	0.11	0/957	0.31	0/1302
5	M	0.13	0/1057	0.33	0/1441
5	P	0.16	0/928	0.36	0/1264
6	F	0.13	0/1071	0.31	0/1455
6	N	0.12	0/1182	0.30	0/1608
7	G	0.12	0/1217	0.33	0/1647
7	K	0.11	0/1421	0.32	0/1927
8	I	0.11	0/1474	0.32	1/1986 (0.1%)
9	L	0.10	0/1157	0.26	0/1561
10	O	0.10	0/1568	0.30	0/2115
11	R	0.13	0/1810	0.35	0/2820
All	All	0.13	0/28471	0.33	1/38967 (0.0%)

There are no bond length outliers.

All (1) bond angle outliers are listed below:

Mol	Chain	Res	Type	Atoms	Z	Observed(°)	Ideal(°)
8	I	96	ALA	CB-CA-C	-5.47	110.28	116.63

There are no chirality outliers.

There are no planarity outliers.

5.2 Too-close contacts

In the following table, the Non-H and H(model) columns list the number of non-hydrogen atoms and hydrogen atoms in the chain respectively. The H(added) column lists the number of hydrogen atoms added and optimized by MolProbity. The Clashes column lists the number of clashes within the asymmetric unit, whereas Symm-Clashes lists symmetry-related clashes.

Mol	Chain	Non-H	H(model)	H(added)	Clashes	Symm-Clashes
1	A	2991	0	3052	16	0
2	B	2466	0	2417	11	0
3	C	4135	0	4124	34	0
4	D	2890	0	2871	19	0
5	E	895	0	877	3	0
5	H	931	0	919	4	0
5	J	936	0	920	9	0
5	M	1034	0	1021	3	0
5	P	907	0	887	4	0
6	F	1040	0	988	4	0
6	N	1148	0	1091	5	0
7	G	1195	0	1188	3	0
7	K	1393	0	1392	14	0
8	I	1453	0	1441	15	0
9	L	1141	0	1163	11	0
10	O	1545	0	1550	7	0
11	R	1621	0	818	14	0
12	B	1	0	0	0	0
12	C	1	0	0	0	0
12	D	1	0	0	0	0
12	K	1	0	0	0	0
12	O	1	0	0	0	0
13	C	3	0	0	0	0
14	R	24	0	11	0	0
15	A	62	0	0	0	0
15	B	56	0	0	0	0
15	C	67	0	0	0	0
15	D	16	0	0	1	0
15	E	14	0	0	0	0
15	F	15	0	0	0	0
15	G	8	0	0	0	0
15	H	9	0	0	0	0
15	K	2	0	0	0	0
15	M	16	0	0	0	0
15	N	17	0	0	1	0
15	O	13	0	0	0	0
15	P	5	0	0	0	0

Continued on next page...

Continued from previous page...

Mol	Chain	Non-H	H(model)	H(added)	Clashes	Symm-Clashes
15	R	67	0	0	0	0
All	All	28120	0	26730	145	0

The all-atom clashscore is defined as the number of clashes found per 1000 atoms (including hydrogen atoms). The all-atom clashscore for this structure is 3.

The worst 5 of 145 close contacts within the same asymmetric unit are listed below, sorted by their clash magnitude.

Atom-1	Atom-2	Interatomic distance (Å)	Clash overlap (Å)
1:A:63:CYS:SG	7:G:471:ARG:NH1	2.59	0.76
8:I:110:VAL:HG22	8:I:128:ILE:HG22	1.70	0.74
3:C:289:ARG:NH1	3:C:400:ASP:OD1	2.28	0.67
5:P:33:ASP:O	5:P:34:ILE:HD13	1.95	0.66
3:C:320:THR:HG21	3:C:402:ILE:HG23	1.78	0.66

There are no symmetry-related clashes.

5.3 Torsion angles [i](#)

5.3.1 Protein backbone [i](#)

In the following table, the Percentiles column shows the percent Ramachandran outliers of the chain as a percentile score with respect to all PDB entries followed by that with respect to all EM entries.

The Analysed column shows the number of residues for which the backbone conformation was analysed, and the total number of residues.

Mol	Chain	Analysed	Favoured	Allowed	Outliers	Percentiles	
1	A	372/384 (97%)	360 (97%)	12 (3%)	0	100	100
2	B	298/368 (81%)	294 (99%)	4 (1%)	0	100	100
3	C	515/818 (63%)	486 (94%)	29 (6%)	0	100	100
4	D	361/414 (87%)	352 (98%)	9 (2%)	0	100	100
5	E	112/164 (68%)	110 (98%)	2 (2%)	0	100	100
5	H	116/164 (71%)	112 (97%)	4 (3%)	0	100	100
5	J	117/164 (71%)	114 (97%)	3 (3%)	0	100	100
5	M	131/164 (80%)	129 (98%)	2 (2%)	0	100	100

Continued on next page...

Continued from previous page...

Mol	Chain	Analysed	Favoured	Allowed	Outliers	Percentiles	
5	P	114/164 (70%)	114 (100%)	0	0	100	100
6	F	127/393 (32%)	121 (95%)	5 (4%)	1 (1%)	16	50
6	N	140/393 (36%)	136 (97%)	4 (3%)	0	100	100
7	G	155/587 (26%)	145 (94%)	9 (6%)	1 (1%)	21	56
7	K	182/587 (31%)	177 (97%)	5 (3%)	0	100	100
8	I	184/218 (84%)	180 (98%)	4 (2%)	0	100	100
9	L	139/169 (82%)	137 (99%)	2 (1%)	0	100	100
10	O	188/762 (25%)	183 (97%)	5 (3%)	0	100	100
All	All	3251/5913 (55%)	3150 (97%)	99 (3%)	2 (0%)	49	80

All (2) Ramachandran outliers are listed below:

Mol	Chain	Res	Type
7	G	491	SER
6	F	276	ALA

5.3.2 Protein sidechains [i](#)

In the following table, the Percentiles column shows the percent sidechain outliers of the chain as a percentile score with respect to all PDB entries followed by that with respect to all EM entries.

The Analysed column shows the number of residues for which the sidechain conformation was analysed, and the total number of residues.

Mol	Chain	Analysed	Rotameric	Outliers	Percentiles	
1	A	331/339 (98%)	331 (100%)	0	100	100
2	B	262/318 (82%)	261 (100%)	1 (0%)	84	90
3	C	455/693 (66%)	453 (100%)	2 (0%)	84	90
4	D	321/362 (89%)	318 (99%)	3 (1%)	70	85
5	E	104/145 (72%)	102 (98%)	2 (2%)	50	76
5	H	108/145 (74%)	105 (97%)	3 (3%)	38	70
5	J	109/145 (75%)	107 (98%)	2 (2%)	51	77
5	M	120/145 (83%)	120 (100%)	0	100	100
5	P	106/145 (73%)	105 (99%)	1 (1%)	70	85
6	F	114/327 (35%)	114 (100%)	0	100	100

Continued on next page...

Continued from previous page...

Mol	Chain	Analysed	Rotameric	Outliers	Percentiles	
6	N	127/327 (39%)	125 (98%)	2 (2%)	55	79
7	G	135/486 (28%)	134 (99%)	1 (1%)	76	86
7	K	158/486 (32%)	156 (99%)	2 (1%)	61	81
8	I	158/178 (89%)	158 (100%)	0	100	100
9	L	127/151 (84%)	126 (99%)	1 (1%)	73	86
10	O	171/623 (27%)	171 (100%)	0	100	100
All	All	2906/5015 (58%)	2886 (99%)	20 (1%)	73	86

5 of 20 residues with a non-rotameric sidechain are listed below:

Mol	Chain	Res	Type
7	K	433	ILE
6	N	272	VAL
5	P	110	ASN
6	N	311	VAL
5	E	44	VAL

Sometimes sidechains can be flipped to improve hydrogen bonding and reduce clashes. 5 of 34 such sidechains are listed below:

Mol	Chain	Res	Type
5	M	69	HIS
6	N	299	GLN
10	O	744	HIS
4	D	127	GLN
4	D	125	HIS

5.3.3 RNA [i](#)

Mol	Chain	Analysed	Backbone Outliers	Pucker Outliers
11	R	75/76 (98%)	9 (12%)	1 (1%)

5 of 9 RNA backbone outliers are listed below:

Mol	Chain	Res	Type
11	R	9	G
11	R	18	G
11	R	19	G
11	R	21	U

Continued on next page...

Continued from previous page...

Mol	Chain	Res	Type
11	R	30	G

All (1) RNA pucker outliers are listed below:

Mol	Chain	Res	Type
11	R	30	G

5.4 Non-standard residues in protein, DNA, RNA chains [i](#)

There are no non-standard protein/DNA/RNA residues in this entry.

5.5 Carbohydrates [i](#)

There are no oligosaccharides in this entry.

5.6 Ligand geometry [i](#)

Of 9 ligands modelled in this entry, 8 are monoatomic - leaving 1 for Mogul analysis.

In the following table, the Counts columns list the number of bonds (or angles) for which Mogul statistics could be retrieved, the number of bonds (or angles) that are observed in the model and the number of bonds (or angles) that are defined in the Chemical Component Dictionary. The Link column lists molecule types, if any, to which the group is linked. The Z score for a bond length (or angle) is the number of standard deviations the observed value is removed from the expected value. A bond length (or angle) with $|Z| > 2$ is considered an outlier worth inspection. RMSZ is the root-mean-square of all Z scores of the bond lengths (or angles).

Mol	Type	Chain	Res	Link	Bond lengths			Bond angles		
					Counts	RMSZ	$\# Z > 2$	Counts	RMSZ	$\# Z > 2$
14	5GP	R	101	11	26,26,26	3.45	10 (38%)	39,40,40	1.51	7 (17%)

In the following table, the Chirals column lists the number of chiral outliers, the number of chiral centers analysed, the number of these observed in the model and the number defined in the Chemical Component Dictionary. Similar counts are reported in the Torsion and Rings columns. '-' means no outliers of that kind were identified.

Mol	Type	Chain	Res	Link	Chirals	Torsions	Rings
14	5GP	R	101	11	-	4/10/26/26	0/3/3/3

The worst 5 of 10 bond length outliers are listed below:

Mol	Chain	Res	Type	Atoms	Z	Observed(Å)	Ideal(Å)
14	R	101	5GP	O3'-C3'	-9.55	1.19	1.43
14	R	101	5GP	O6-C6	8.89	1.40	1.23
14	R	101	5GP	C5-N7	5.39	1.49	1.39
14	R	101	5GP	C2-N2	5.19	1.46	1.34
14	R	101	5GP	C2-N3	3.75	1.42	1.33

The worst 5 of 7 bond angle outliers are listed below:

Mol	Chain	Res	Type	Atoms	Z	Observed(°)	Ideal(°)
14	R	101	5GP	C8-N9-C4	4.26	114.01	106.03
14	R	101	5GP	C2-N1-C6	-3.32	119.08	125.11
14	R	101	5GP	C5-C6-N1	2.57	119.80	113.25
14	R	101	5GP	O6-C6-C5	-2.46	120.04	126.53
14	R	101	5GP	OP3-P-OP1	-2.42	101.40	110.83

There are no chirality outliers.

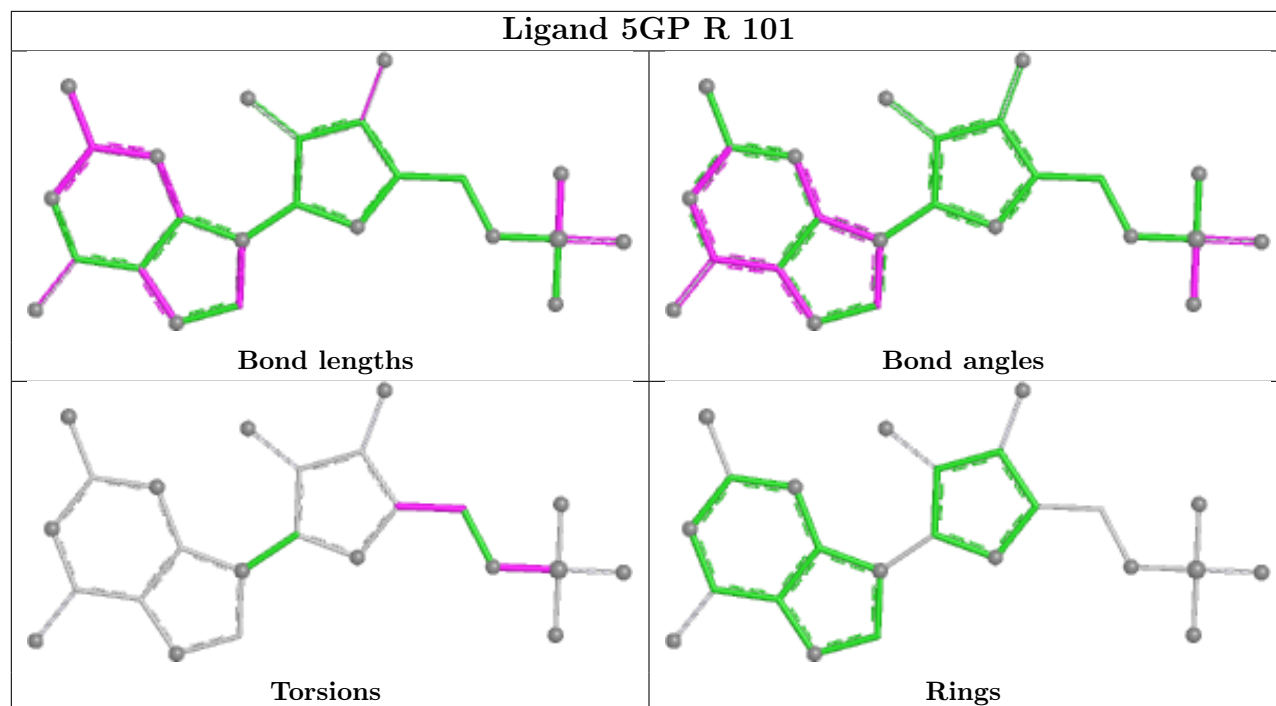
All (4) torsion outliers are listed below:

Mol	Chain	Res	Type	Atoms
14	R	101	5GP	C5'-O5'-P-OP1
14	R	101	5GP	C5'-O5'-P-OP3
14	R	101	5GP	C5'-O5'-P-OP2
14	R	101	5GP	O4'-C4'-C5'-O5'

There are no ring outliers.

No monomer is involved in short contacts.

The following is a two-dimensional graphical depiction of Mogul quality analysis of bond lengths, bond angles, torsion angles, and ring geometry for all instances of the Ligand of Interest. In addition, ligands with molecular weight > 250 and outliers as shown on the validation Tables will also be included. For torsion angles, if less than 5% of the Mogul distribution of torsion angles is within 10 degrees of the torsion angle in question, then that torsion angle is considered an outlier. Any bond that is central to one or more torsion angles identified as an outlier by Mogul will be highlighted in the graph. For rings, the root-mean-square deviation (RMSD) between the ring in question and similar rings identified by Mogul is calculated over all ring torsion angles. If the average RMSD is greater than 60 degrees and the minimal RMSD between the ring in question and any Mogul-identified rings is also greater than 60 degrees, then that ring is considered an outlier. The outliers are highlighted in purple. The color gray indicates Mogul did not find sufficient equivalents in the CSD to analyse the geometry.



5.7 Other polymers [i](#)

There are no such residues in this entry.

5.8 Polymer linkage issues [i](#)

There are no chain breaks in this entry.

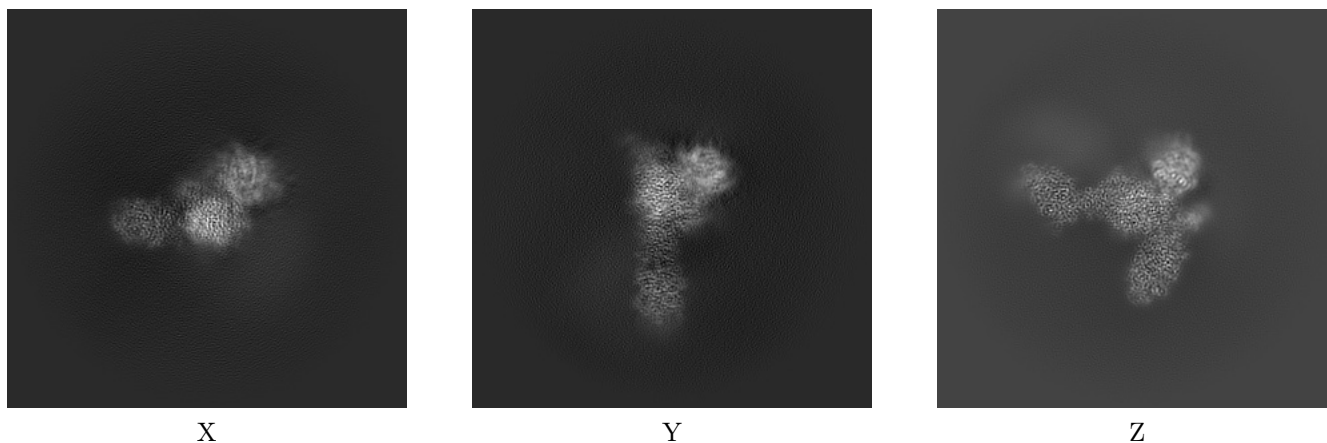
6 Map visualisation [i](#)

This section contains visualisations of the EMDB entry EMD-46791. These allow visual inspection of the internal detail of the map and identification of artifacts.

No raw map or half-maps were deposited for this entry and therefore no images, graphs, etc. pertaining to the raw map can be shown.

6.1 Orthogonal projections [i](#)

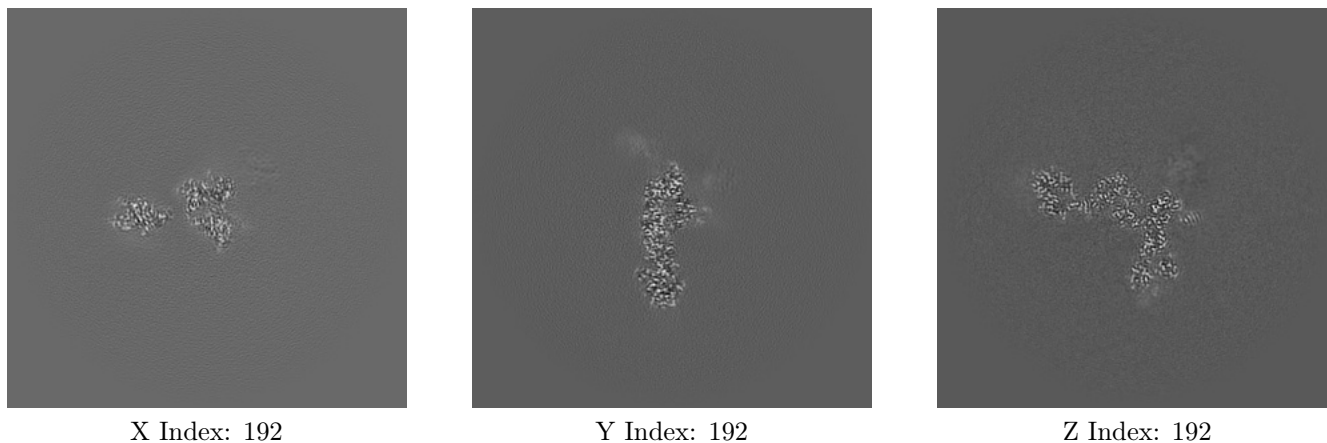
6.1.1 Primary map



The images above show the map projected in three orthogonal directions.

6.2 Central slices [i](#)

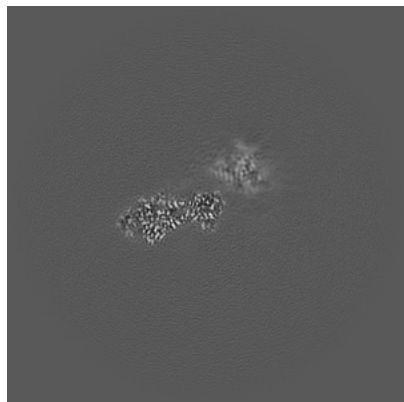
6.2.1 Primary map



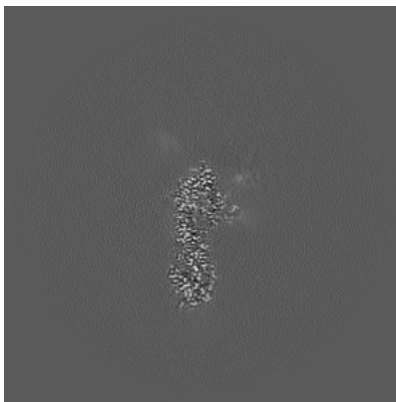
The images above show central slices of the map in three orthogonal directions.

6.3 Largest variance slices [i](#)

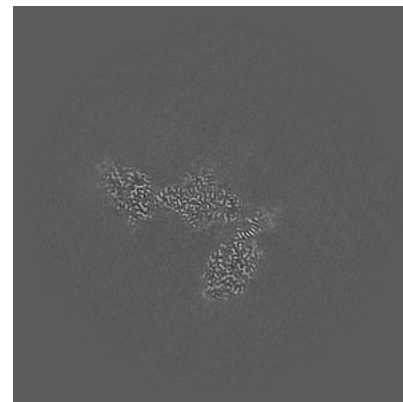
6.3.1 Primary map



X Index: 217



Y Index: 196

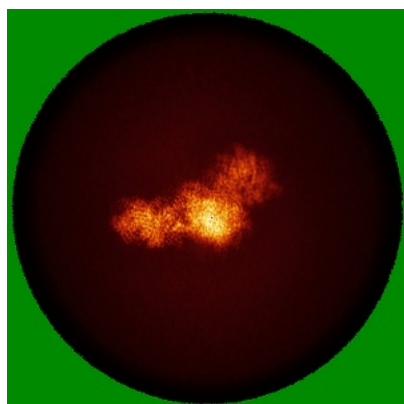


Z Index: 176

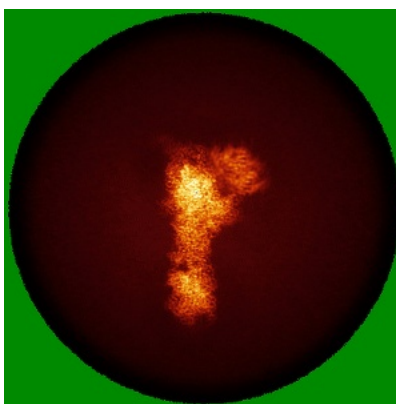
The images above show the largest variance slices of the map in three orthogonal directions.

6.4 Orthogonal standard-deviation projections (False-color) [i](#)

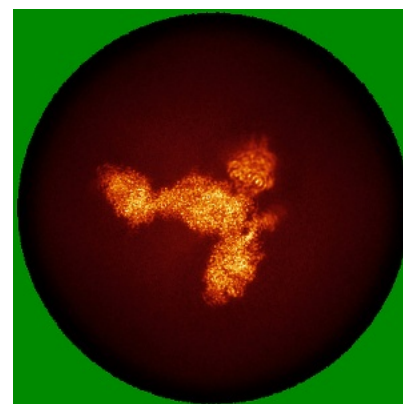
6.4.1 Primary map



X



Y

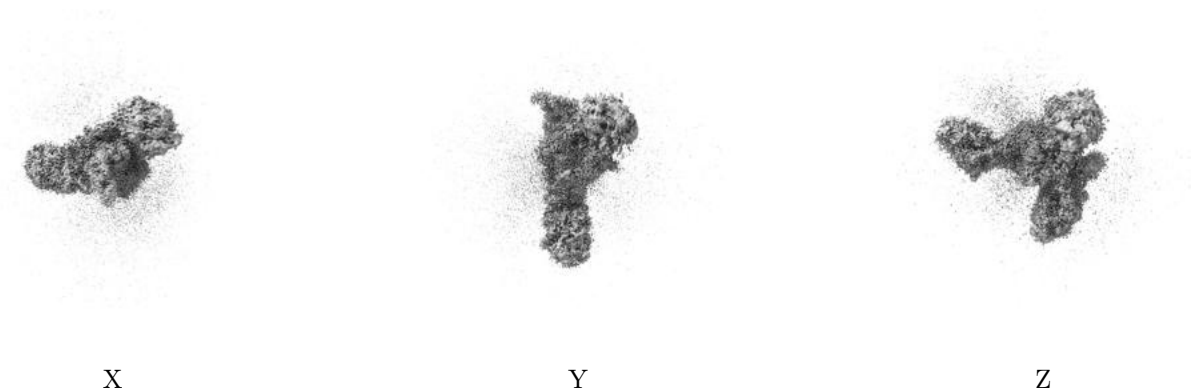


Z

The images above show the map standard deviation projections with false color in three orthogonal directions. Minimum values are shown in green, max in blue, and dark to light orange shades represent small to large values respectively.

6.5 Orthogonal surface views [i](#)

6.5.1 Primary map



The images above show the 3D surface view of the map at the recommended contour level 3.5. These images, in conjunction with the slice images, may facilitate assessment of whether an appropriate contour level has been provided.

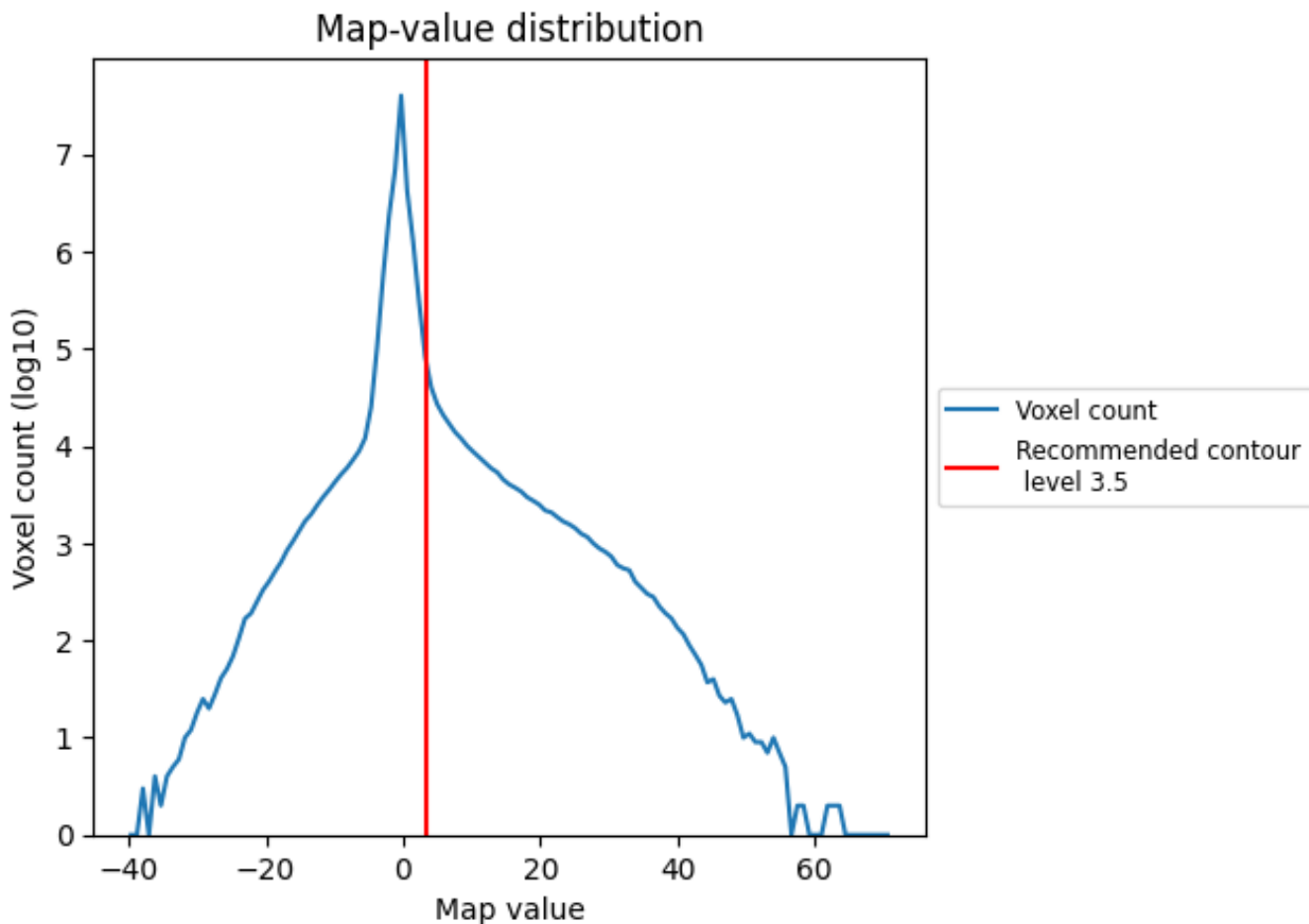
6.6 Mask visualisation [i](#)

This section was not generated. No masks/segmentation were deposited.

7 Map analysis [i](#)

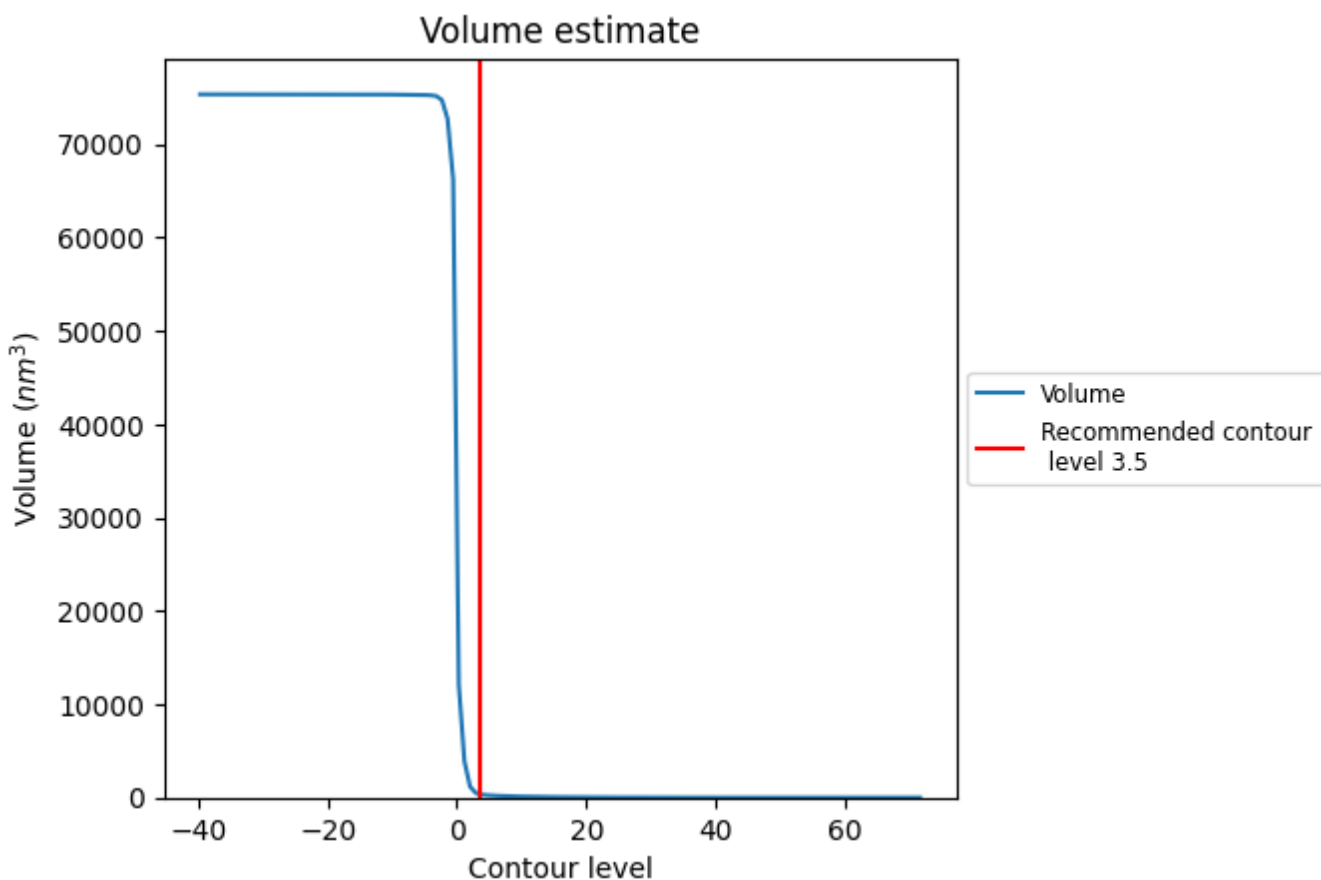
This section contains the results of statistical analysis of the map.

7.1 Map-value distribution [i](#)



The map-value distribution is plotted in 128 intervals along the x-axis. The y-axis is logarithmic. A spike in this graph at zero usually indicates that the volume has been masked.

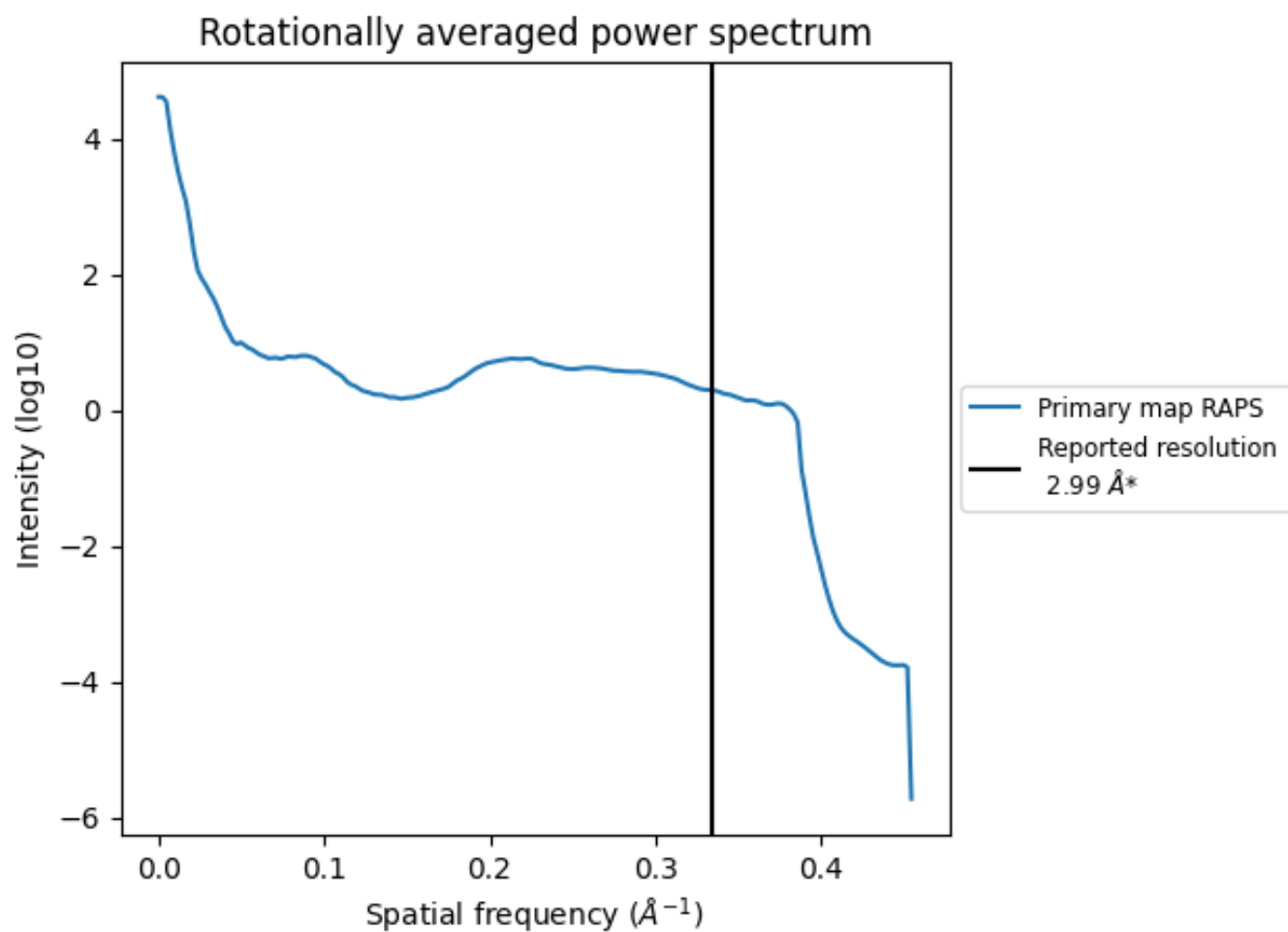
7.2 Volume estimate [i](#)



The volume at the recommended contour level is 377 nm³; this corresponds to an approximate mass of 341 kDa.

The volume estimate graph shows how the enclosed volume varies with the contour level. The recommended contour level is shown as a vertical line and the intersection between the line and the curve gives the volume of the enclosed surface at the given level.

7.3 Rotationally averaged power spectrum i



*Reported resolution corresponds to spatial frequency of 0.334 Å⁻¹

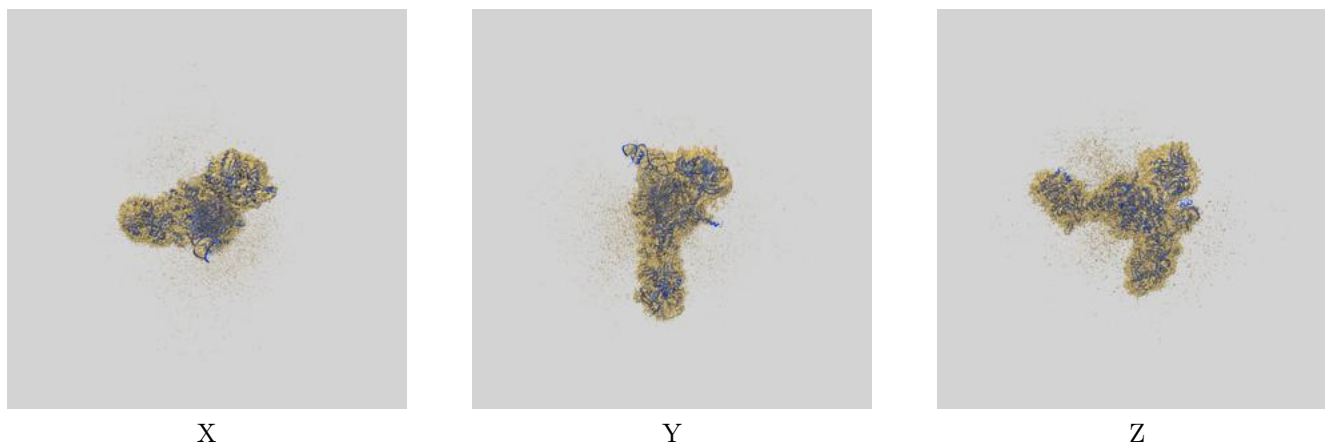
8 Fourier-Shell correlation

This section was not generated. No FSC curve or half-maps provided.

9 Map-model fit [i](#)

This section contains information regarding the fit between EMDB map EMD-46791 and PDB model 9DEI. Per-residue inclusion information can be found in section [3](#) on page [9](#).

9.1 Map-model overlay [i](#)



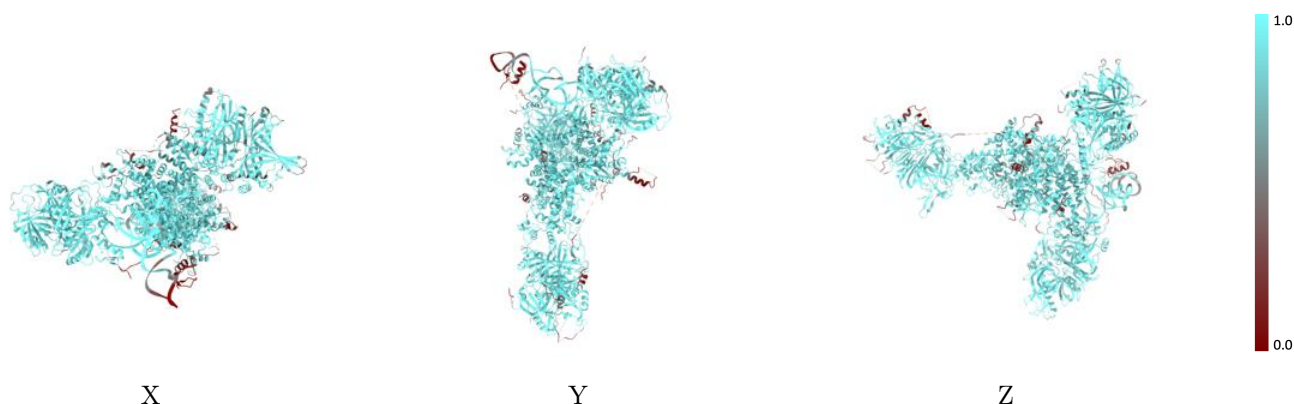
The images above show the 3D surface view of the map at the recommended contour level 3.5 at 50% transparency in yellow overlaid with a ribbon representation of the model coloured in blue. These images allow for the visual assessment of the quality of fit between the atomic model and the map.

9.2 Q-score mapped to coordinate model [i](#)



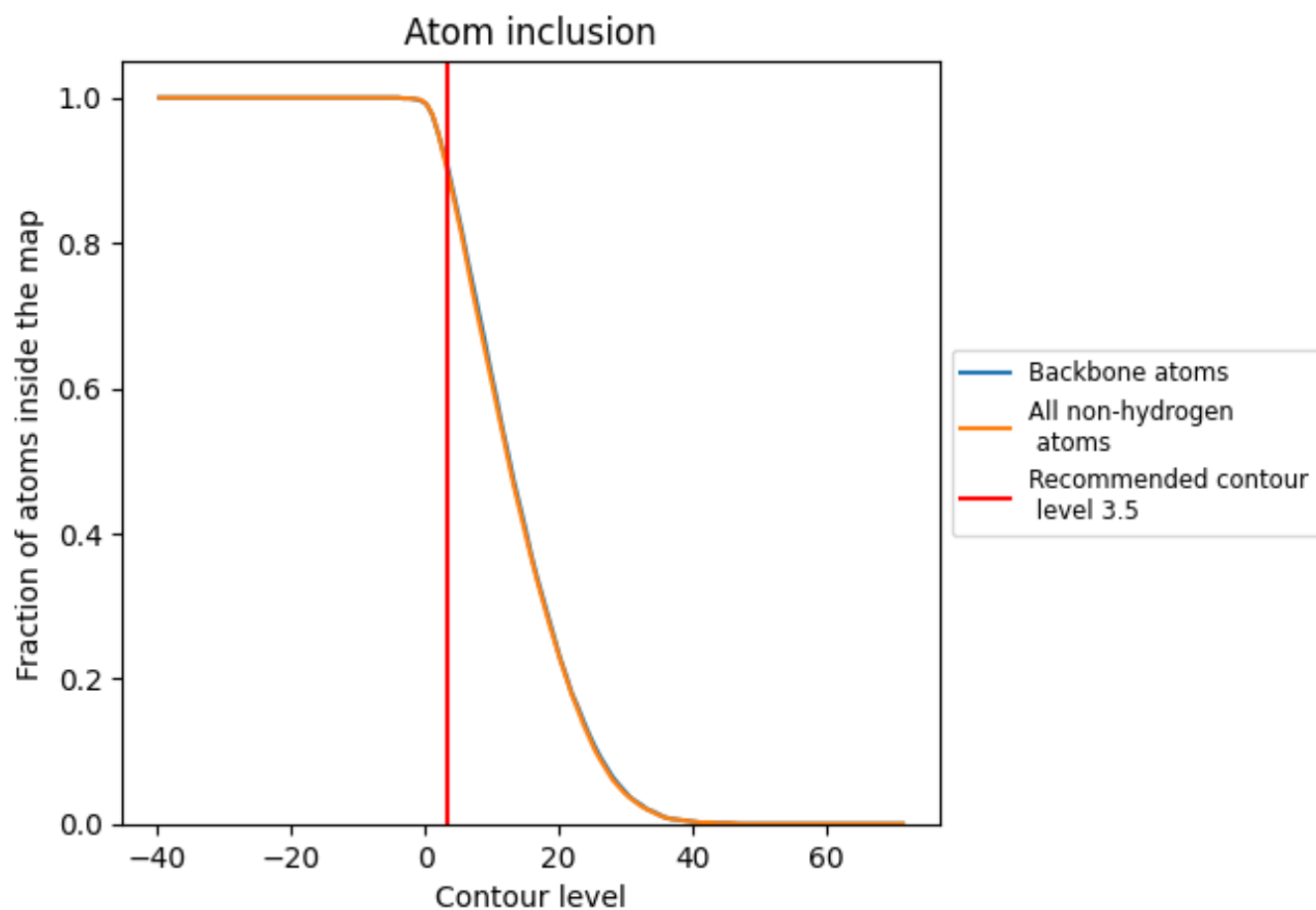
The images above show the model with each residue coloured according to its Q-score. This shows their resolvability in the map with higher Q-score values reflecting better resolvability. Please note: Q-score is calculating the resolvability of atoms, and thus high values are only expected at resolutions at which atoms can be resolved. Low Q-score values may therefore be expected for many entries.

9.3 Atom inclusion mapped to coordinate model [i](#)



The images above show the model with each residue coloured according to its atom inclusion. This shows to what extent they are inside the map at the recommended contour level (3.5).





































9.4 Atom inclusion [i](#)



At the recommended contour level, 90% of all backbone atoms, 90% of all non-hydrogen atoms, are inside the map.

9.5 Map-model fit summary

The table lists the average atom inclusion at the recommended contour level (3.5) and Q-score for the entire model and for each chain.

Chain	Atom inclusion	Q-score
All	 0.8970	 0.4950
A	 0.9500	 0.5730
B	 0.9510	 0.5800
C	 0.8600	 0.5170
D	 0.9010	 0.4740
E	 0.9800	 0.6060
F	 0.9450	 0.5850
G	 0.7570	 0.4500
H	 0.9580	 0.5580
I	 0.9010	 0.3520
J	 0.9580	 0.3580
K	 0.8330	 0.3530
L	 0.9130	 0.2780
M	 0.9430	 0.5770
N	 0.9680	 0.5930
O	 0.7830	 0.4760
P	 0.9490	 0.5630
R	 0.8280	 0.4170

