



# Full wwPDB X-ray Structure Validation Report ⓘ

Mar 7, 2026 – 03:02 AM UTC

PDB ID : 1DF7 / pdb\_00001df7  
Title : DIHYDROFOLATE REDUCTASE OF MYCOBACTERIUM TUBERCULOSIS COMPLEXED WITH NADPH AND METHOTREXATE  
Authors : Li, R.; Sirawaraporn, R.; Chitnumsub, P.; Sirawaraporn, W.; Wooden, J.; Athappilly, F.; Turley, S.; Hol, W.G.  
Deposited on : 1999-11-17  
Resolution : 1.70 Å(reported)

This is a Full wwPDB X-ray Structure Validation Report for a publicly released PDB entry.

We welcome your comments at [validation@mail.wwpdb.org](mailto:validation@mail.wwpdb.org)

A user guide is available at

<https://www.wwpdb.org/validation/2017/XrayValidationReportHelp>

with specific help available everywhere you see the ⓘ symbol.

The types of validation reports are described at

<http://www.wwpdb.org/validation/2017/FAQs#types>.

---

The following versions of software and data (see [references ⓘ](#)) were used in the production of this report:

MolProbity : 4-5-2 with Phenix2.0  
Mogul : 2022.3.0, CSD as543be (2022)  
Xtrriage (Phenix) : **NOT EXECUTED**  
EDS : **NOT EXECUTED**  
Buster-report : wwPDB partial adaption of 1.1.7 (2018)  
Percentile statistics : 20250101.v01 (using entries in the PDB archive January 1st 2025)  
Ideal geometry (proteins) : Engh & Huber (2001)  
Ideal geometry (DNA, RNA) : Parkinson et al. (1996)  
Validation Pipeline (wwPDB-VP) : 2.49

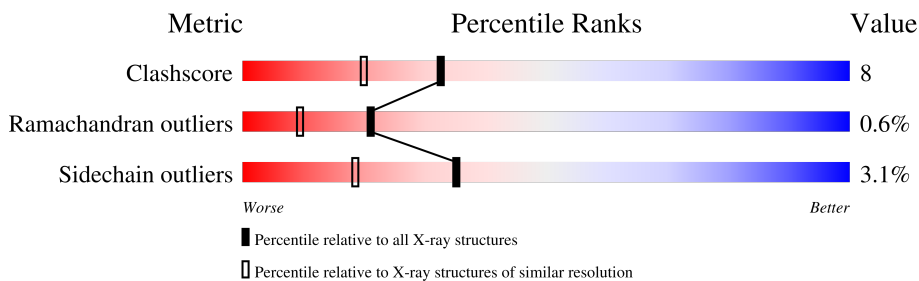
# 1 Overall quality at a glance

The following experimental techniques were used to determine the structure:

*X-RAY DIFFRACTION*

The reported resolution of this entry is 1.70 Å.

Percentile scores (ranging between 0-100) for global validation metrics of the entry are shown in the following graphic. The table shows the number of entries on which the scores are based.



Metric	Whole archive (#Entries)	Similar resolution (#Entries, resolution range(Å))
Clashscore	190562	5924 (1.70-1.70)
Ramachandran outliers	187476	5846 (1.70-1.70)
Sidechain outliers	187428	5846 (1.70-1.70)

The table below summarises the geometric issues observed across the polymeric chains and their fit to the electron density. The red, orange, yellow and green segments of the lower bar indicate the fraction of residues that contain outliers for  $\geq 3$ , 2, 1 and 0 types of geometric quality criteria respectively. A grey segment represents the fraction of residues that are not modelled. The numeric value for each fraction is indicated below the corresponding segment, with a dot representing fractions  $\leq 5\%$ .

Note EDS was not executed.

Mol	Chain	Length	Quality of chain
1	A	159	

The following table lists non-polymeric compounds, carbohydrate monomers and non-standard residues in protein, DNA, RNA chains that are outliers for geometric or electron-density-fit criteria:

Mol	Type	Chain	Res	Chirality	Geometry	Clashes	Electron density
2	SO4	A	506	-	X	-	-
4	MTX	A	501	-	X	-	-

## 2 Entry composition [i](#)

There are 6 unique types of molecules in this entry. The entry contains 1549 atoms, of which 0 are hydrogens and 0 are deuteriums.

In the tables below, the ZeroOcc column contains the number of atoms modelled with zero occupancy, the AltConf column contains the number of residues with at least one atom in alternate conformation and the Trace column contains the number of residues modelled with at most 2 atoms.

- Molecule 1 is a protein called DIHYDROFOLATE REDUCTASE.

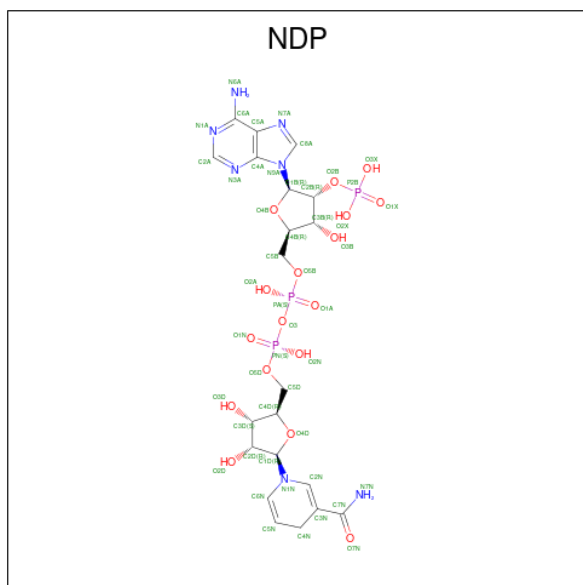
Mol	Chain	Residues	Atoms					ZeroOcc	AltConf	Trace
			Total	C	N	O	S			
1	A	159	1244	783	228	228	5	0	0	0

- Molecule 2 is SULFATE ION (CCD ID: SO4) (formula: O<sub>4</sub>S).



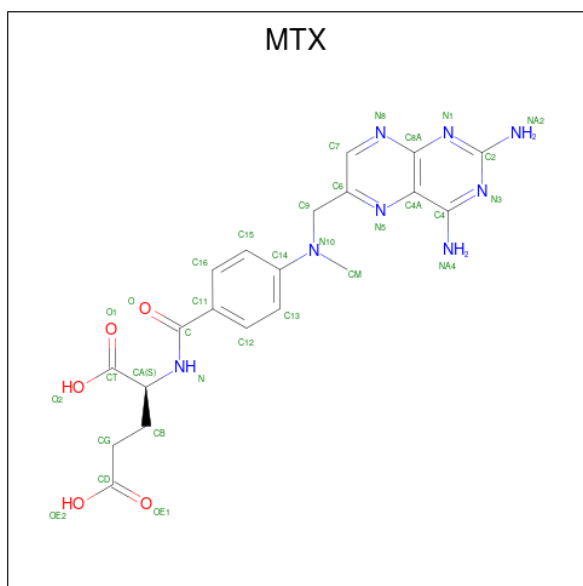
Mol	Chain	Residues	Atoms			ZeroOcc	AltConf
			Total	O	S		
2	A	1	5	4	1	0	0

- Molecule 3 is NADPH DIHYDRO-NICOTINAMIDE-ADENINE-DINUCLEOTIDE PHOSPHATE (CCD ID: NDP) (formula: C<sub>21</sub>H<sub>30</sub>N<sub>7</sub>O<sub>17</sub>P<sub>3</sub>).



Mol	Chain	Residues	Atoms					ZeroOcc	AltConf
			Total	C	N	O	P		
3	A	1	48	21	7	17	3	0	0

- Molecule 4 is METHOTREXATE (CCD ID: MTX) (formula:  $C_{20}H_{22}N_8O_5$ ).



Mol	Chain	Residues	Atoms					ZeroOcc	AltConf
			Total	C	N	O			
4	A	1	33	20	8	5	0	0	

- Molecule 5 is GLYCEROL (CCD ID: GOL) (formula:  $C_3H_8O_3$ ).



Mol	Chain	Residues	Atoms	ZeroOcc	AltConf
5	A	1	Total C O 6 3 3	0	0
5	A	1	Total C O 6 3 3	0	0
5	A	1	Total C O 6 3 3	0	0
5	A	1	Total C O 6 3 3	0	0

- Molecule 6 is water.

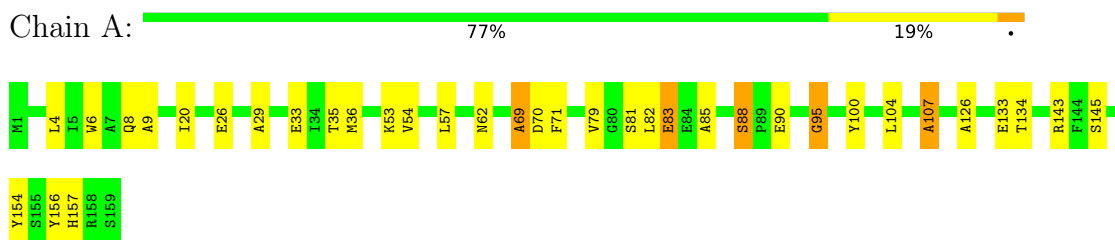
Mol	Chain	Residues	Atoms	ZeroOcc	AltConf
6	A	195	Total O 195 195	0	0

### 3 Residue-property plots [i](#)

These plots are drawn for all protein, RNA, DNA and oligosaccharide chains in the entry. The first graphic for a chain summarises the proportions of the various outlier classes displayed in the second graphic. The second graphic shows the sequence view annotated by issues in geometry. Residues are color-coded according to the number of geometric quality criteria for which they contain at least one outlier: green = 0, yellow = 1, orange = 2 and red = 3 or more. Stretches of 2 or more consecutive residues without any outlier are shown as a green connector. Residues present in the sample, but not in the model, are shown in grey.

Note EDS was not executed.

- Molecule 1: DIHYDROFOLATE REDUCTASE



## 4 Data and refinement statistics

Xtrriage (Phenix) and EDS were not executed - this section is therefore incomplete.

Property	Value	Source
Space group	P 41	Depositor
Cell constants a, b, c, $\alpha$ , $\beta$ , $\gamma$	60.51Å 60.51Å 58.83Å 90.00° 90.00° 90.00°	Depositor
Resolution (Å)	50.00 – 1.70	Depositor
% Data completeness (in resolution range)	90.0 (50.00-1.70)	Depositor
$R_{merge}$	0.04	Depositor
$R_{sym}$	(Not available)	Depositor
Refinement program	X-PLOR	Depositor
R, $R_{free}$	0.187 , 0.246	Depositor
Estimated twinning fraction	No twinning to report.	Xtrriage
Total number of atoms	1549	wwPDB-VP
Average B, all atoms (Å <sup>2</sup> )	24.0	wwPDB-VP

## 5 Model quality [i](#)

### 5.1 Standard geometry [i](#)

Bond lengths and bond angles in the following residue types are not validated in this section: MTX, NDP, SO4, GOL

The Z score for a bond length (or angle) is the number of standard deviations the observed value is removed from the expected value. A bond length (or angle) with  $|Z| > 5$  is considered an outlier worth inspection. RMSZ is the root-mean-square of all Z scores of the bond lengths (or angles).

Mol	Chain	Bond lengths		Bond angles	
		RMSZ	# Z  >5	RMSZ	# Z  >5
1	A	0.87	4/1275 (0.3%)	1.11	10/1732 (0.6%)

Chiral center outliers are detected by calculating the chiral volume of a chiral center and verifying if the center is modelled as a planar moiety or with the opposite hand. A planarity outlier is detected by checking planarity of atoms in a peptide group, atoms in a mainchain group or atoms of a sidechain that are expected to be planar.

Mol	Chain	#Chirality outliers	#Planarity outliers
1	A	0	2

All (4) bond length outliers are listed below:

Mol	Chain	Res	Type	Atoms	Z	Observed(Å)	Ideal(Å)
1	A	95	GLY	CA-C	9.07	1.62	1.51
1	A	95	GLY	N-CA	-8.95	1.33	1.45
1	A	95	GLY	C-O	-6.92	1.17	1.23
1	A	36	MET	SD-CE	-5.28	1.66	1.79

All (10) bond angle outliers are listed below:

Mol	Chain	Res	Type	Atoms	Z	Observed(°)	Ideal(°)
1	A	88	SER	CA-C-N	7.85	127.91	119.28
1	A	88	SER	C-N-CA	7.85	127.91	119.28
1	A	9	ALA	N-CA-C	-6.41	102.07	110.53
1	A	71	PHE	N-CA-C	-5.92	101.52	110.28
1	A	107	ALA	N-CA-C	5.74	119.45	110.32
1	A	126	ALA	N-CA-C	-5.60	100.55	109.96
1	A	20	ILE	N-CA-C	-5.43	102.28	107.76
1	A	35	THR	N-CA-C	5.36	119.54	112.89
1	A	134	THR	N-CA-C	-5.28	106.67	113.01

*Continued on next page...*

*Continued from previous page...*

Mol	Chain	Res	Type	Atoms	Z	Observed(°)	Ideal(°)
1	A	95	GLY	O-C-N	-5.18	118.14	123.06

There are no chirality outliers.

All (2) planarity outliers are listed below:

Mol	Chain	Res	Type	Group
1	A	154	TYR	Sidechain
1	A	156	TYR	Sidechain

## 5.2 Too-close contacts [i](#)

In the following table, the Non-H and H(model) columns list the number of non-hydrogen atoms and hydrogen atoms in the chain respectively. The H(added) column lists the number of hydrogen atoms added and optimized by MolProbity. The Clashes column lists the number of clashes within the asymmetric unit, whereas Symm-Clashes lists symmetry-related clashes.

Mol	Chain	Non-H	H(model)	H(added)	Clashes	Symm-Clashes
1	A	1244	0	1223	19	0
2	A	5	0	0	0	0
3	A	48	0	26	0	0
4	A	33	0	20	1	0
5	A	24	0	32	2	0
6	A	195	0	0	9	0
All	All	1549	0	1301	21	0

The all-atom clashscore is defined as the number of clashes found per 1000 atoms (including hydrogen atoms). The all-atom clashscore for this structure is 8.

All (21) close contacts within the same asymmetric unit are listed below, sorted by their clash magnitude.

Atom-1	Atom-2	Interatomic distance (Å)	Clash overlap (Å)
1:A:57:LEU:H	1:A:62:ASN:HD21	1.25	0.83
1:A:33:GLU:HB3	6:A:656:HOH:O	1.94	0.66
5:A:504:GOL:H2	6:A:677:HOH:O	2.04	0.57
1:A:81:SER:OG	1:A:83:GLU:HG3	2.07	0.55
1:A:88:SER:HB3	6:A:665:HOH:O	2.06	0.54
1:A:69:ALA:HA	6:A:697:HOH:O	2.09	0.53
1:A:57:LEU:H	1:A:62:ASN:ND2	2.02	0.50
1:A:53:LYS:HG2	6:A:533:HOH:O	2.14	0.48

*Continued on next page...*

Continued from previous page...

Atom-1	Atom-2	Interatomic distance (Å)	Clash overlap (Å)
1:A:26:GLU:OE1	1:A:145:SER:HB2	2.14	0.48
1:A:54:VAL:HB	1:A:57:LEU:HD23	1.95	0.47
1:A:79:VAL:HG21	1:A:85:ALA:HB2	1.97	0.46
1:A:29:ALA:O	1:A:33:GLU:HG3	2.15	0.46
1:A:70:ASP:HB3	6:A:664:HOH:O	2.15	0.46
4:A:501:MTX:H13	4:A:501:MTX:HM1	1.89	0.44
1:A:8:GLN:NE2	5:A:505:GOL:H12	2.33	0.44
1:A:143:ARG:NH2	6:A:526:HOH:O	2.50	0.43
1:A:133:GLU:HB2	6:A:573:HOH:O	2.19	0.43
1:A:6:TRP:HB3	1:A:100:TYR:CZ	2.54	0.42
1:A:95:GLY:HA2	1:A:100:TYR:CZ	2.54	0.42
1:A:157:HIS:HB3	6:A:570:HOH:O	2.18	0.42
1:A:4:LEU:HD13	1:A:107:ALA:HB2	2.02	0.40

There are no symmetry-related clashes.

### 5.3 Torsion angles [i](#)

#### 5.3.1 Protein backbone [i](#)

In the following table, the Percentiles column shows the percent Ramachandran outliers of the chain as a percentile score with respect to all X-ray entries followed by that with respect to entries of similar resolution.

The Analysed column shows the number of residues for which the backbone conformation was analysed, and the total number of residues.

Mol	Chain	Analysed	Favoured	Allowed	Outliers	Percentiles
1	A	157/159 (99%)	151 (96%)	5 (3%)	1 (1%)	21   9

All (1) Ramachandran outliers are listed below:

Mol	Chain	Res	Type
1	A	69	ALA

#### 5.3.2 Protein sidechains [i](#)

In the following table, the Percentiles column shows the percent sidechain outliers of the chain as a percentile score with respect to all X-ray entries followed by that with respect to entries of similar resolution.

The Analysed column shows the number of residues for which the sidechain conformation was analysed, and the total number of residues.

Mol	Chain	Analysed	Rotameric	Outliers	Percentiles
1	A	127/127 (100%)	123 (97%)	4 (3%)	35 18

All (4) residues with a non-rotameric sidechain are listed below:

Mol	Chain	Res	Type
1	A	82	LEU
1	A	83	GLU
1	A	90	GLU
1	A	104	LEU

Sometimes sidechains can be flipped to improve hydrogen bonding and reduce clashes. All (2) such sidechains are listed below:

Mol	Chain	Res	Type
1	A	62	ASN
1	A	98	GLN

### 5.3.3 RNA [i](#)

There are no RNA molecules in this entry.

## 5.4 Non-standard residues in protein, DNA, RNA chains [i](#)

There are no non-standard protein/DNA/RNA residues in this entry.

## 5.5 Carbohydrates [i](#)

There are no oligosaccharides in this entry.

## 5.6 Ligand geometry [i](#)

7 ligands are modelled in this entry.

In the following table, the Counts columns list the number of bonds (or angles) for which Mogul statistics could be retrieved, the number of bonds (or angles) that are observed in the model and the number of bonds (or angles) that are defined in the Chemical Component Dictionary. The Link column lists molecule types, if any, to which the group is linked. The Z score for a bond length (or angle) is the number of standard deviations the observed value is removed from the

expected value. A bond length (or angle) with  $|Z| > 2$  is considered an outlier worth inspection. RMSZ is the root-mean-square of all Z scores of the bond lengths (or angles).

Mol	Type	Chain	Res	Link	Bond lengths			Bond angles		
					Counts	RMSZ	$\# Z  > 2$	Counts	RMSZ	$\# Z  > 2$
5	GOL	A	505	-	5,5,5	0.83	0	5,5,5	1.44	2 (40%)
5	GOL	A	504	-	5,5,5	0.73	0	5,5,5	1.48	1 (20%)
5	GOL	A	502	-	5,5,5	0.50	0	5,5,5	0.99	0
4	MTX	A	501	-	35,35,35	3.25	14 (40%)	47,49,49	5.17	30 (63%)
2	SO4	A	506	-	4,4,4	0.23	0	6,6,6	3.67	4 (66%)
5	GOL	A	503	-	5,5,5	0.53	0	5,5,5	1.32	0
3	NDP	A	500	-	51,52,52	1.78	7 (13%)	71,80,80	1.29	7 (9%)

In the following table, the Chirals column lists the number of chiral outliers, the number of chiral centers analysed, the number of these observed in the model and the number defined in the Chemical Component Dictionary. Similar counts are reported in the Torsion and Rings columns. '-' means no outliers of that kind were identified.

Mol	Type	Chain	Res	Link	Chirals	Torsions	Rings
5	GOL	A	505	-	-	2/4/4/4	-
5	GOL	A	504	-	-	3/4/4/4	-
5	GOL	A	502	-	-	1/4/4/4	-
4	MTX	A	501	-	-	1/25/25/25	0/3/3/3
5	GOL	A	503	-	-	3/4/4/4	-
3	NDP	A	500	-	-	1/34/77/77	0/5/5/5

All (21) bond length outliers are listed below:

Mol	Chain	Res	Type	Atoms	Z	Observed(Å)	Ideal(Å)
4	A	501	MTX	C13-C14	8.14	1.54	1.39
4	A	501	MTX	C11-C	-7.48	1.33	1.50
4	A	501	MTX	CG-CD	7.22	1.67	1.50
3	A	500	NDP	PA-O3	-6.43	1.52	1.59
4	A	501	MTX	CA-N	-5.71	1.34	1.45
3	A	500	NDP	P2B-O2B	5.58	1.69	1.59
4	A	501	MTX	C15-C14	5.46	1.49	1.39
4	A	501	MTX	C16-C15	-5.43	1.30	1.38
4	A	501	MTX	C7-N8	-5.05	1.23	1.31
4	A	501	MTX	OE1-CD	4.60	1.37	1.22
3	A	500	NDP	C7N-C3N	4.24	1.57	1.48
4	A	501	MTX	CM-N10	3.56	1.51	1.46
3	A	500	NDP	C4N-C3N	-2.81	1.44	1.50
4	A	501	MTX	O2-CT	2.39	1.38	1.30

Continued on next page...

*Continued from previous page...*

Mol	Chain	Res	Type	Atoms	Z	Observed(Å)	Ideal(Å)
4	A	501	MTX	C16-C11	2.21	1.42	1.39
3	A	500	NDP	C2A-N1A	2.17	1.37	1.33
4	A	501	MTX	C9-N10	-2.15	1.42	1.46
4	A	501	MTX	C13-C12	-2.14	1.35	1.38
4	A	501	MTX	CB-CA	2.13	1.58	1.53
3	A	500	NDP	P2B-O1X	-2.12	1.43	1.50
3	A	500	NDP	C3B-C2B	2.08	1.57	1.53

All (44) bond angle outliers are listed below:

Mol	Chain	Res	Type	Atoms	Z	Observed(°)	Ideal(°)
4	A	501	MTX	O-C-N	-13.45	96.89	122.47
4	A	501	MTX	C9-N10-C14	10.31	132.67	120.17
4	A	501	MTX	CA-N-C	9.69	144.81	121.56
4	A	501	MTX	C13-C12-C11	9.64	131.09	120.80
4	A	501	MTX	OE2-CD-OE1	9.34	147.37	123.33
4	A	501	MTX	OE2-CD-CG	-8.49	87.17	114.00
4	A	501	MTX	C12-C13-C14	-8.36	109.71	120.30
4	A	501	MTX	O-C-C11	8.27	137.29	120.90
4	A	501	MTX	CB-CG-CD	8.22	134.43	112.49
4	A	501	MTX	C6-C7-N8	7.29	130.13	123.14
4	A	501	MTX	C4A-C4-N3	-7.14	112.39	120.84
4	A	501	MTX	CB-CA-N	5.97	122.73	110.91
2	A	506	SO4	O2-S-O1	-5.88	67.67	109.06
4	A	501	MTX	C7-C6-N5	-5.10	117.56	120.87
4	A	501	MTX	CB-CA-CT	-4.94	98.62	110.35
4	A	501	MTX	N1-C2-N3	-4.83	121.06	127.21
4	A	501	MTX	C11-C-N	4.71	125.78	117.04
2	A	506	SO4	O4-S-O2	4.65	133.88	109.56
3	A	500	NDP	C3N-C2N-N1N	-4.23	116.99	123.20
4	A	501	MTX	CG-CB-CA	4.19	120.88	113.16
2	A	506	SO4	O3-S-O1	4.01	130.50	109.56
4	A	501	MTX	C16-C15-C14	3.91	125.25	120.30
4	A	501	MTX	NA2-C2-N3	3.90	123.06	117.22
3	A	500	NDP	C1D-N1N-C2N	-3.88	114.75	121.14
4	A	501	MTX	C2-N3-C4	3.79	127.53	116.72
4	A	501	MTX	O1-CT-CA	3.53	133.65	122.26
4	A	501	MTX	C15-C14-N10	-3.48	116.73	121.59
4	A	501	MTX	C9-C6-C7	3.46	127.68	121.38
4	A	501	MTX	C7-N8-C8A	-3.22	112.71	117.20
4	A	501	MTX	CM-N10-C14	-3.13	114.41	119.59
4	A	501	MTX	O2-CT-O1	-2.99	117.30	124.08

*Continued on next page...*

Continued from previous page...

Mol	Chain	Res	Type	Atoms	Z	Observed(°)	Ideal(°)
3	A	500	NDP	C6N-N1N-C2N	2.97	122.50	119.32
4	A	501	MTX	NA4-C4-N3	2.93	125.00	117.11
4	A	501	MTX	C15-C16-C11	-2.82	117.78	120.80
4	A	501	MTX	C8A-C4A-N5	-2.60	119.44	122.35
3	A	500	NDP	O2X-P2B-O2B	-2.51	96.07	105.85
3	A	500	NDP	O3B-C3B-C2B	2.47	118.11	111.19
4	A	501	MTX	C13-C14-N10	2.47	125.03	121.59
3	A	500	NDP	O3X-P2B-O2X	2.46	117.02	107.80
2	A	506	SO4	O4-S-O1	-2.42	96.93	109.56
3	A	500	NDP	O7N-C7N-C3N	-2.34	116.50	120.90
5	A	504	GOL	O2-C2-C1	2.19	118.23	109.18
5	A	505	GOL	O2-C2-C1	2.19	118.23	109.18
5	A	505	GOL	C3-C2-C1	2.00	119.14	111.80

There are no chirality outliers.

All (11) torsion outliers are listed below:

Mol	Chain	Res	Type	Atoms
5	A	504	GOL	C1-C2-C3-O3
5	A	505	GOL	C1-C2-C3-O3
5	A	504	GOL	O2-C2-C3-O3
5	A	502	GOL	C1-C2-C3-O3
5	A	503	GOL	C1-C2-C3-O3
5	A	504	GOL	O1-C1-C2-C3
5	A	503	GOL	O2-C2-C3-O3
4	A	501	MTX	C6-C9-N10-CM
3	A	500	NDP	O4D-C1D-N1N-C2N
5	A	505	GOL	O1-C1-C2-C3
5	A	503	GOL	O1-C1-C2-C3

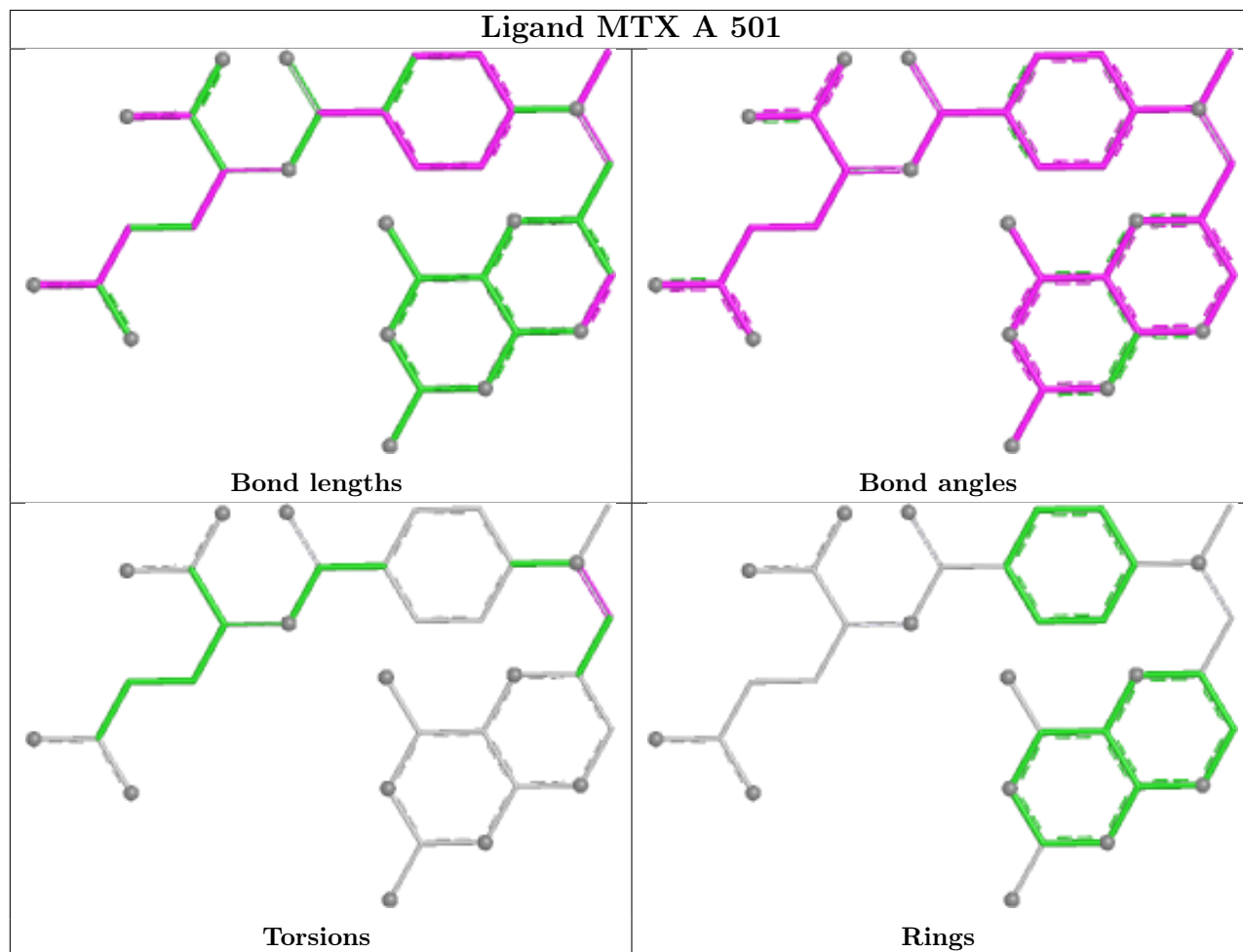
There are no ring outliers.

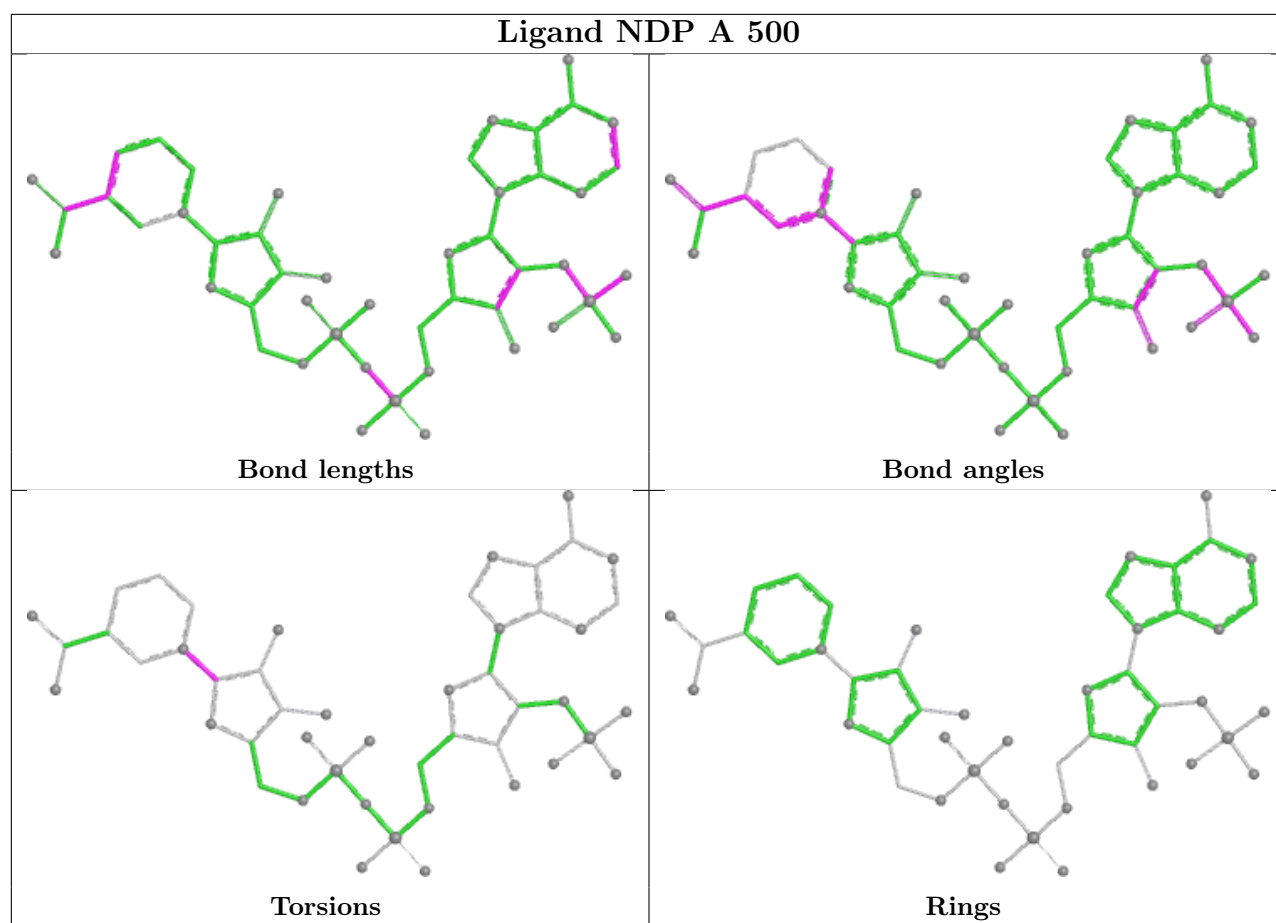
3 monomers are involved in 3 short contacts:

Mol	Chain	Res	Type	Clashes	Symm-Clashes
5	A	505	GOL	1	0
5	A	504	GOL	1	0
4	A	501	MTX	1	0

The following is a two-dimensional graphical depiction of Mogul quality analysis of bond lengths, bond angles, torsion angles, and ring geometry for all instances of the Ligand of Interest. In addition, ligands with molecular weight > 250 and outliers as shown on the validation Tables will

also be included. For torsion angles, if less than 5% of the Mogul distribution of torsion angles is within 10 degrees of the torsion angle in question, then that torsion angle is considered an outlier. Any bond that is central to one or more torsion angles identified as an outlier by Mogul will be highlighted in the graph. For rings, the root-mean-square deviation (RMSD) between the ring in question and similar rings identified by Mogul is calculated over all ring torsion angles. If the average RMSD is greater than 60 degrees and the minimal RMSD between the ring in question and any Mogul-identified rings is also greater than 60 degrees, then that ring is considered an outlier. The outliers are highlighted in purple. The color gray indicates Mogul did not find sufficient equivalents in the CSD to analyse the geometry.





## 5.7 Other polymers [\(i\)](#)

There are no such residues in this entry.

## 5.8 Polymer linkage issues [\(i\)](#)

There are no chain breaks in this entry.

## 6 Fit of model and data [i](#)

### 6.1 Protein, DNA and RNA chains [i](#)

EDS was not executed - this section is therefore empty.

### 6.2 Non-standard residues in protein, DNA, RNA chains [i](#)

EDS was not executed - this section is therefore empty.

### 6.3 Carbohydrates [i](#)

EDS was not executed - this section is therefore empty.

### 6.4 Ligands [i](#)

EDS was not executed - this section is therefore empty.

### 6.5 Other polymers [i](#)

EDS was not executed - this section is therefore empty.