



Full wwPDB EM Validation Report ⓘ

Mar 8, 2026 – 03:05 AM UTC

PDB ID : 8DFL / pdb_00008dff
EMDB ID : EMD-25417
Title : Structure of human Kv1.3 with A0194009G09 nanobodies (alternate conformation)
Authors : Meyerson, J.R.; Selvakumar, P.
Deposited on : 2022-06-22
Resolution : 3.25 Å(reported)

This is a Full wwPDB EM Validation Report for a publicly released PDB entry.

We welcome your comments at validation@mail.wwpdb.org

A user guide is available at

<https://www.wwpdb.org/validation/2017/EMValidationReportHelp>

with specific help available everywhere you see the ⓘ symbol.

The types of validation reports are described at

<http://www.wwpdb.org/validation/2017/FAQs#types>.

The following versions of software and data (see [references ⓘ](#)) were used in the production of this report:

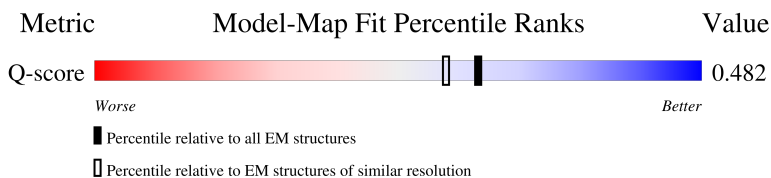
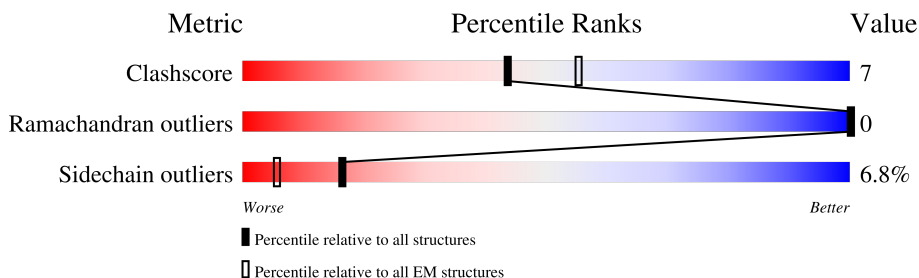
EMDB validation analysis : 0.0.1.dev132
MolProbity : 4-5-2 with Phenix2.0
Percentile statistics : 20250101.v01 (using entries in the PDB archive January 1st 2025)
EM percentile statistics : 202505.v01 (Using data in the EMDB archive up until May 2025)
MapQ : 1.9.13
Ideal geometry (proteins) : Engh & Huber (2001)
Ideal geometry (DNA, RNA) : Parkinson et al. (1996)
Validation Pipeline (wwPDB-VP) : 2.49

1 Overall quality at a glance

The following experimental techniques were used to determine the structure:
ELECTRON MICROSCOPY

The reported resolution of this entry is 3.25 Å.

Percentile scores (ranging between 0-100) for global validation metrics of the entry are shown in the following graphic. The table shows the number of entries on which the scores are based.







Metric	Whole archive (#Entries)	EM structures (#Entries)	Similar EM resolution (#Entries, resolution range(Å))
Clashscore	229148	23984	-
Ramachandran outliers	224038	23583	-
Sidechain outliers	223484	23102	-
Q-score	-	25397	14599 (2.75 - 3.75)

The table below summarises the geometric issues observed across the polymeric chains and their fit to the map. The red, orange, yellow and green segments of the bar indicate the fraction of residues that contain outliers for ≥ 3 , 2, 1 and 0 types of geometric quality criteria respectively. A grey segment represents the fraction of residues that are not modelled. The numeric value for each fraction is indicated below the corresponding segment, with a dot representing fractions $\leq 5\%$. The upper red bar (where present) indicates the fraction of residues that have poor fit to the EM map (all-atom inclusion $< 40\%$). The numeric value is given above the bar.

Mol	Chain	Length	Quality of chain
1	A	856	 9% 35% 6% 50%
1	B	856	 8% 34% 7% 51%
1	C	856	 8% 35% 7% 50%
1	D	856	 8% 35% 6% 51%

Continued on next page...

Continued from previous page...

Mol	Chain	Length	Quality of chain
2	E	126	
2	F	126	
2	G	126	
2	H	126	

2 Entry composition

There are 3 unique types of molecules in this entry. The entry contains 15283 atoms, of which 0 are hydrogens and 0 are deuteriums.

In the tables below, the AltConf column contains the number of residues with at least one atom in alternate conformation and the Trace column contains the number of residues modelled with at most 2 atoms.

- Molecule 1 is a protein called Potassium voltage-gated channel subfamily A member 3, Green fluorescent protein fusion.

Mol	Chain	Residues	Atoms					AltConf	Trace
			Total	C	N	O	S		
1	A	362	2935	1926	484	514	11	0	0
1	B	362	2935	1926	484	514	11	0	0
1	C	362	2935	1926	484	514	11	0	0
1	D	362	2935	1926	484	514	11	0	0

There are 220 discrepancies between the modelled and reference sequences:

Chain	Residue	Modelled	Actual	Comment	Reference
A	576	SER	-	linker	UNP P22001
A	577	LEU	-	linker	UNP P22001
A	578	GLU	-	linker	UNP P22001
A	579	VAL	-	linker	UNP P22001
A	580	LEU	-	linker	UNP P22001
A	581	PHE	-	linker	UNP P22001
A	582	GLN	-	linker	UNP P22001
A	583	GLY	-	linker	UNP P22001
A	584	PRO	-	linker	UNP P22001
A	585	ALA	-	linker	UNP P22001
A	586	ALA	-	linker	UNP P22001
A	587	ALA	-	linker	UNP P22001
A	588	MET	-	linker	UNP P22001
A	589	VAL	-	linker	UNP P22001
A	634	LEU	PHE	conflict	UNP P42212
A	652	LEU	PHE	conflict	UNP P42212
A	653	GLY	SER	conflict	UNP P42212
A	656	LEU	VAL	conflict	UNP P42212
A	660	ALA	SER	conflict	UNP P42212
A	741	THR	MET	conflict	UNP P42212
A	751	ALA	VAL	conflict	UNP P42212

Continued on next page...

Continued from previous page...

Chain	Residue	Modelled	Actual	Comment	Reference
A	763	GLY	SER	conflict	UNP P42212
A	791	TYR	THR	conflict	UNP P42212
A	794	LYS	ALA	conflict	UNP P42212
A	819	LEU	HIS	conflict	UNP P42212
A	827	SER	-	expression tag	UNP P42212
A	828	ALA	-	expression tag	UNP P42212
A	829	TRP	-	expression tag	UNP P42212
A	830	SER	-	expression tag	UNP P42212
A	831	HIS	-	expression tag	UNP P42212
A	832	PRO	-	expression tag	UNP P42212
A	833	GLN	-	expression tag	UNP P42212
A	834	PHE	-	expression tag	UNP P42212
A	835	GLU	-	expression tag	UNP P42212
A	836	LYS	-	expression tag	UNP P42212
A	837	GLY	-	expression tag	UNP P42212
A	838	GLY	-	expression tag	UNP P42212
A	839	GLY	-	expression tag	UNP P42212
A	840	SER	-	expression tag	UNP P42212
A	841	GLY	-	expression tag	UNP P42212
A	842	GLY	-	expression tag	UNP P42212
A	843	GLY	-	expression tag	UNP P42212
A	844	SER	-	expression tag	UNP P42212
A	845	GLY	-	expression tag	UNP P42212
A	846	GLY	-	expression tag	UNP P42212
A	847	GLY	-	expression tag	UNP P42212
A	848	SER	-	expression tag	UNP P42212
A	849	TRP	-	expression tag	UNP P42212
A	850	SER	-	expression tag	UNP P42212
A	851	HIS	-	expression tag	UNP P42212
A	852	PRO	-	expression tag	UNP P42212
A	853	GLN	-	expression tag	UNP P42212
A	854	PHE	-	expression tag	UNP P42212
A	855	GLU	-	expression tag	UNP P42212
A	856	LYS	-	expression tag	UNP P42212
B	576	SER	-	linker	UNP P22001
B	577	LEU	-	linker	UNP P22001
B	578	GLU	-	linker	UNP P22001
B	579	VAL	-	linker	UNP P22001
B	580	LEU	-	linker	UNP P22001
B	581	PHE	-	linker	UNP P22001
B	582	GLN	-	linker	UNP P22001
B	583	GLY	-	linker	UNP P22001

Continued on next page...

Continued from previous page...

Chain	Residue	Modelled	Actual	Comment	Reference
B	584	PRO	-	linker	UNP P22001
B	585	ALA	-	linker	UNP P22001
B	586	ALA	-	linker	UNP P22001
B	587	ALA	-	linker	UNP P22001
B	588	MET	-	linker	UNP P22001
B	589	VAL	-	linker	UNP P22001
B	634	LEU	PHE	conflict	UNP P42212
B	652	LEU	PHE	conflict	UNP P42212
B	653	GLY	SER	conflict	UNP P42212
B	656	LEU	VAL	conflict	UNP P42212
B	660	ALA	SER	conflict	UNP P42212
B	741	THR	MET	conflict	UNP P42212
B	751	ALA	VAL	conflict	UNP P42212
B	763	GLY	SER	conflict	UNP P42212
B	791	TYR	THR	conflict	UNP P42212
B	794	LYS	ALA	conflict	UNP P42212
B	819	LEU	HIS	conflict	UNP P42212
B	827	SER	-	expression tag	UNP P42212
B	828	ALA	-	expression tag	UNP P42212
B	829	TRP	-	expression tag	UNP P42212
B	830	SER	-	expression tag	UNP P42212
B	831	HIS	-	expression tag	UNP P42212
B	832	PRO	-	expression tag	UNP P42212
B	833	GLN	-	expression tag	UNP P42212
B	834	PHE	-	expression tag	UNP P42212
B	835	GLU	-	expression tag	UNP P42212
B	836	LYS	-	expression tag	UNP P42212
B	837	GLY	-	expression tag	UNP P42212
B	838	GLY	-	expression tag	UNP P42212
B	839	GLY	-	expression tag	UNP P42212
B	840	SER	-	expression tag	UNP P42212
B	841	GLY	-	expression tag	UNP P42212
B	842	GLY	-	expression tag	UNP P42212
B	843	GLY	-	expression tag	UNP P42212
B	844	SER	-	expression tag	UNP P42212
B	845	GLY	-	expression tag	UNP P42212
B	846	GLY	-	expression tag	UNP P42212
B	847	GLY	-	expression tag	UNP P42212
B	848	SER	-	expression tag	UNP P42212
B	849	TRP	-	expression tag	UNP P42212
B	850	SER	-	expression tag	UNP P42212
B	851	HIS	-	expression tag	UNP P42212

Continued on next page...

Continued from previous page...

Chain	Residue	Modelled	Actual	Comment	Reference
B	852	PRO	-	expression tag	UNP P42212
B	853	GLN	-	expression tag	UNP P42212
B	854	PHE	-	expression tag	UNP P42212
B	855	GLU	-	expression tag	UNP P42212
B	856	LYS	-	expression tag	UNP P42212
C	576	SER	-	linker	UNP P22001
C	577	LEU	-	linker	UNP P22001
C	578	GLU	-	linker	UNP P22001
C	579	VAL	-	linker	UNP P22001
C	580	LEU	-	linker	UNP P22001
C	581	PHE	-	linker	UNP P22001
C	582	GLN	-	linker	UNP P22001
C	583	GLY	-	linker	UNP P22001
C	584	PRO	-	linker	UNP P22001
C	585	ALA	-	linker	UNP P22001
C	586	ALA	-	linker	UNP P22001
C	587	ALA	-	linker	UNP P22001
C	588	MET	-	linker	UNP P22001
C	589	VAL	-	linker	UNP P22001
C	634	LEU	PHE	conflict	UNP P42212
C	652	LEU	PHE	conflict	UNP P42212
C	653	GLY	SER	conflict	UNP P42212
C	656	LEU	VAL	conflict	UNP P42212
C	660	ALA	SER	conflict	UNP P42212
C	741	THR	MET	conflict	UNP P42212
C	751	ALA	VAL	conflict	UNP P42212
C	763	GLY	SER	conflict	UNP P42212
C	791	TYR	THR	conflict	UNP P42212
C	794	LYS	ALA	conflict	UNP P42212
C	819	LEU	HIS	conflict	UNP P42212
C	827	SER	-	expression tag	UNP P42212
C	828	ALA	-	expression tag	UNP P42212
C	829	TRP	-	expression tag	UNP P42212
C	830	SER	-	expression tag	UNP P42212
C	831	HIS	-	expression tag	UNP P42212
C	832	PRO	-	expression tag	UNP P42212
C	833	GLN	-	expression tag	UNP P42212
C	834	PHE	-	expression tag	UNP P42212
C	835	GLU	-	expression tag	UNP P42212
C	836	LYS	-	expression tag	UNP P42212
C	837	GLY	-	expression tag	UNP P42212
C	838	GLY	-	expression tag	UNP P42212

Continued on next page...

Continued from previous page...

Chain	Residue	Modelled	Actual	Comment	Reference
C	839	GLY	-	expression tag	UNP P42212
C	840	SER	-	expression tag	UNP P42212
C	841	GLY	-	expression tag	UNP P42212
C	842	GLY	-	expression tag	UNP P42212
C	843	GLY	-	expression tag	UNP P42212
C	844	SER	-	expression tag	UNP P42212
C	845	GLY	-	expression tag	UNP P42212
C	846	GLY	-	expression tag	UNP P42212
C	847	GLY	-	expression tag	UNP P42212
C	848	SER	-	expression tag	UNP P42212
C	849	TRP	-	expression tag	UNP P42212
C	850	SER	-	expression tag	UNP P42212
C	851	HIS	-	expression tag	UNP P42212
C	852	PRO	-	expression tag	UNP P42212
C	853	GLN	-	expression tag	UNP P42212
C	854	PHE	-	expression tag	UNP P42212
C	855	GLU	-	expression tag	UNP P42212
C	856	LYS	-	expression tag	UNP P42212
D	576	SER	-	linker	UNP P22001
D	577	LEU	-	linker	UNP P22001
D	578	GLU	-	linker	UNP P22001
D	579	VAL	-	linker	UNP P22001
D	580	LEU	-	linker	UNP P22001
D	581	PHE	-	linker	UNP P22001
D	582	GLN	-	linker	UNP P22001
D	583	GLY	-	linker	UNP P22001
D	584	PRO	-	linker	UNP P22001
D	585	ALA	-	linker	UNP P22001
D	586	ALA	-	linker	UNP P22001
D	587	ALA	-	linker	UNP P22001
D	588	MET	-	linker	UNP P22001
D	589	VAL	-	linker	UNP P22001
D	634	LEU	PHE	conflict	UNP P42212
D	652	LEU	PHE	conflict	UNP P42212
D	653	GLY	SER	conflict	UNP P42212
D	656	LEU	VAL	conflict	UNP P42212
D	660	ALA	SER	conflict	UNP P42212
D	741	THR	MET	conflict	UNP P42212
D	751	ALA	VAL	conflict	UNP P42212
D	763	GLY	SER	conflict	UNP P42212
D	791	TYR	THR	conflict	UNP P42212
D	794	LYS	ALA	conflict	UNP P42212

Continued on next page...

Continued from previous page...

Chain	Residue	Modelled	Actual	Comment	Reference
D	819	LEU	HIS	conflict	UNP P42212
D	827	SER	-	expression tag	UNP P42212
D	828	ALA	-	expression tag	UNP P42212
D	829	TRP	-	expression tag	UNP P42212
D	830	SER	-	expression tag	UNP P42212
D	831	HIS	-	expression tag	UNP P42212
D	832	PRO	-	expression tag	UNP P42212
D	833	GLN	-	expression tag	UNP P42212
D	834	PHE	-	expression tag	UNP P42212
D	835	GLU	-	expression tag	UNP P42212
D	836	LYS	-	expression tag	UNP P42212
D	837	GLY	-	expression tag	UNP P42212
D	838	GLY	-	expression tag	UNP P42212
D	839	GLY	-	expression tag	UNP P42212
D	840	SER	-	expression tag	UNP P42212
D	841	GLY	-	expression tag	UNP P42212
D	842	GLY	-	expression tag	UNP P42212
D	843	GLY	-	expression tag	UNP P42212
D	844	SER	-	expression tag	UNP P42212
D	845	GLY	-	expression tag	UNP P42212
D	846	GLY	-	expression tag	UNP P42212
D	847	GLY	-	expression tag	UNP P42212
D	848	SER	-	expression tag	UNP P42212
D	849	TRP	-	expression tag	UNP P42212
D	850	SER	-	expression tag	UNP P42212
D	851	HIS	-	expression tag	UNP P42212
D	852	PRO	-	expression tag	UNP P42212
D	853	GLN	-	expression tag	UNP P42212
D	854	PHE	-	expression tag	UNP P42212
D	855	GLU	-	expression tag	UNP P42212
D	856	LYS	-	expression tag	UNP P42212

- Molecule 2 is a protein called Nanobody A0194009G09.

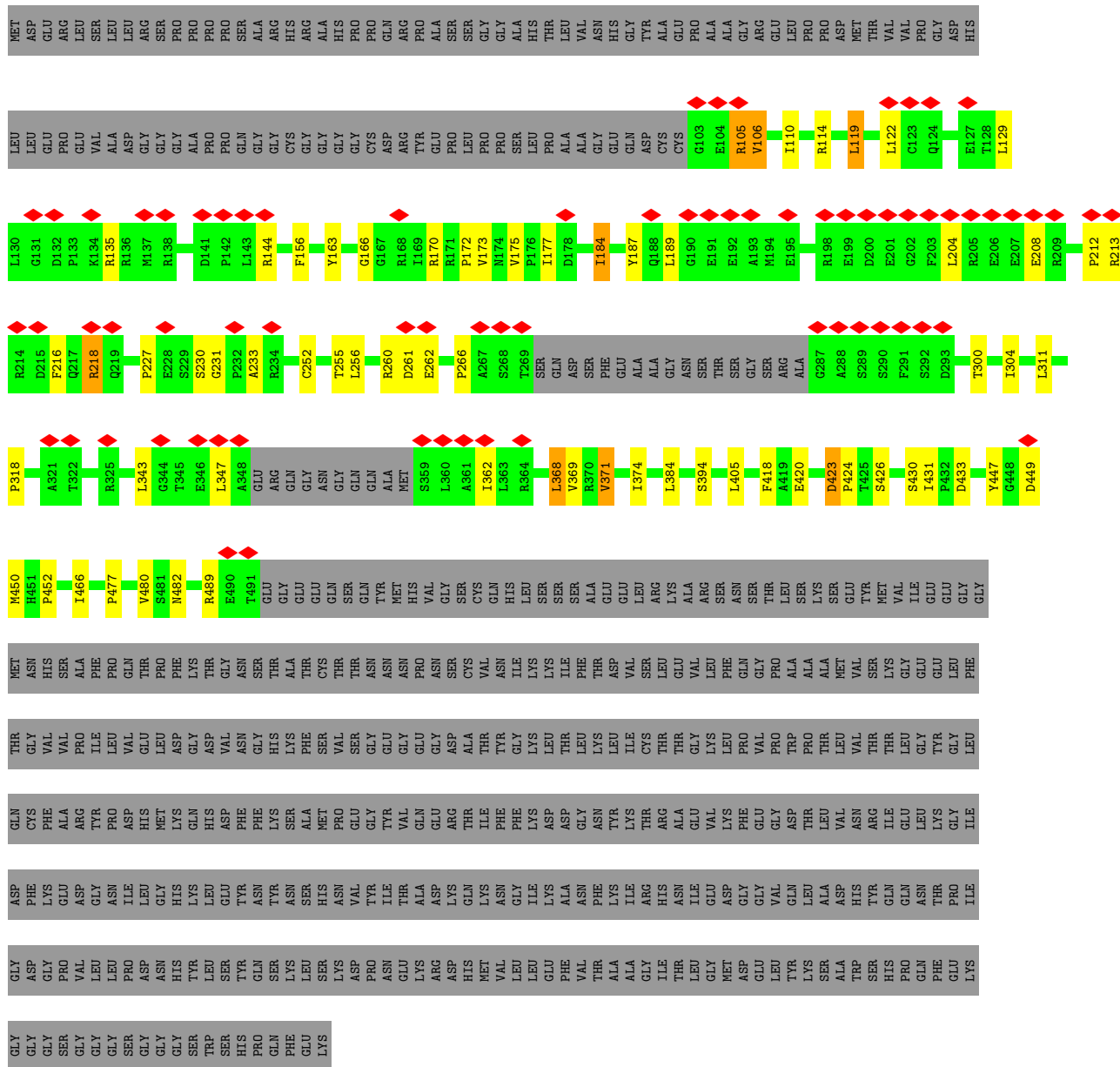
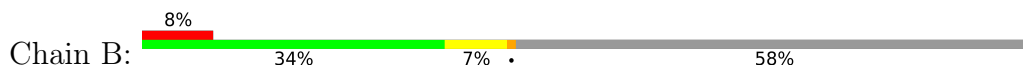
Mol	Chain	Residues	Atoms					AltConf	Trace
2	E	115	Total	C	N	O	S	0	0
			885	555	157	169	4		
2	F	115	Total	C	N	O	S	0	0
			885	555	157	169	4		
2	G	115	Total	C	N	O	S	0	0
			885	555	157	169	4		
2	H	115	Total	C	N	O	S	0	0
			885	555	157	169	4		

- Molecule 3 is POTASSIUM ION (CCD ID: K) (formula: K) (labeled as "Ligand of Interest" by depositor).

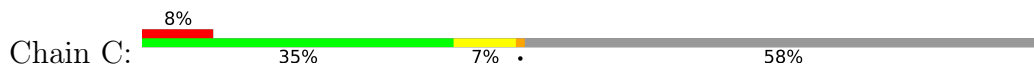
Mol	Chain	Residues	Atoms	AltConf
3	A	3	Total K 3 3	0

GLY
SER
GLY
GLY
GLY
SER
SER
TRP
SER
HIS
HIS
PRO
GLN
PHE
GLU
GLU
LYS

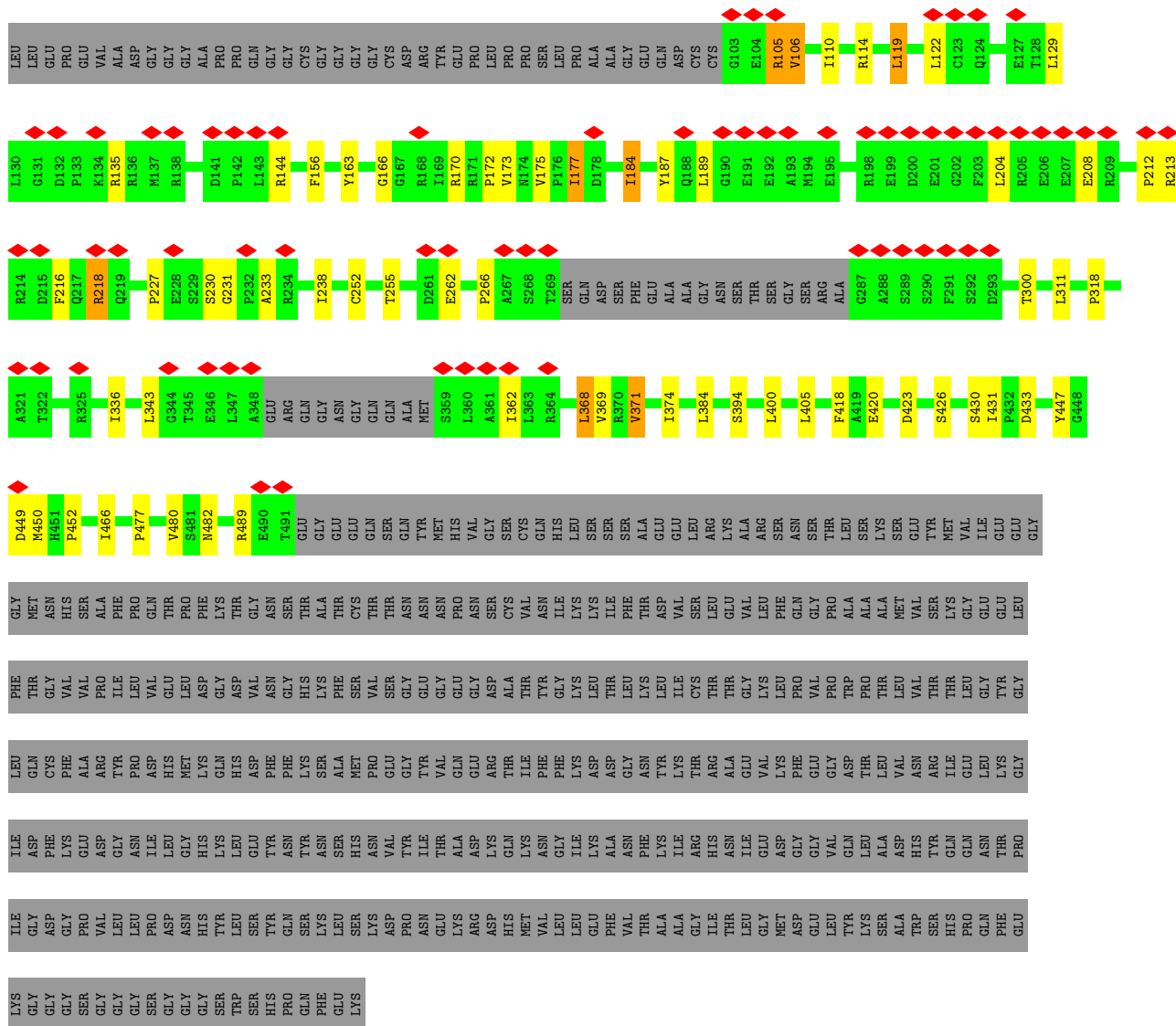
- Molecule 1: Potassium voltage-gated channel subfamily A member 3,Green fluorescent protein fusion



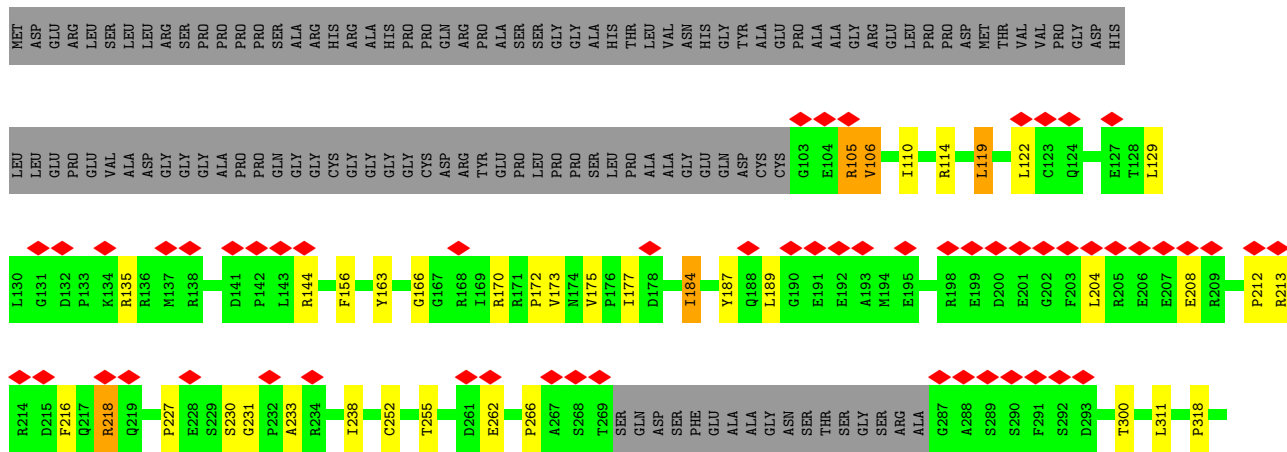
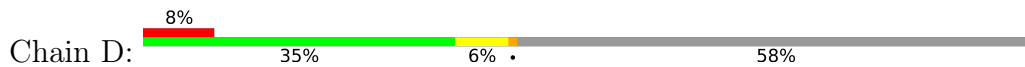
- Molecule 1: Potassium voltage-gated channel subfamily A member 3,Green fluorescent protein fusion

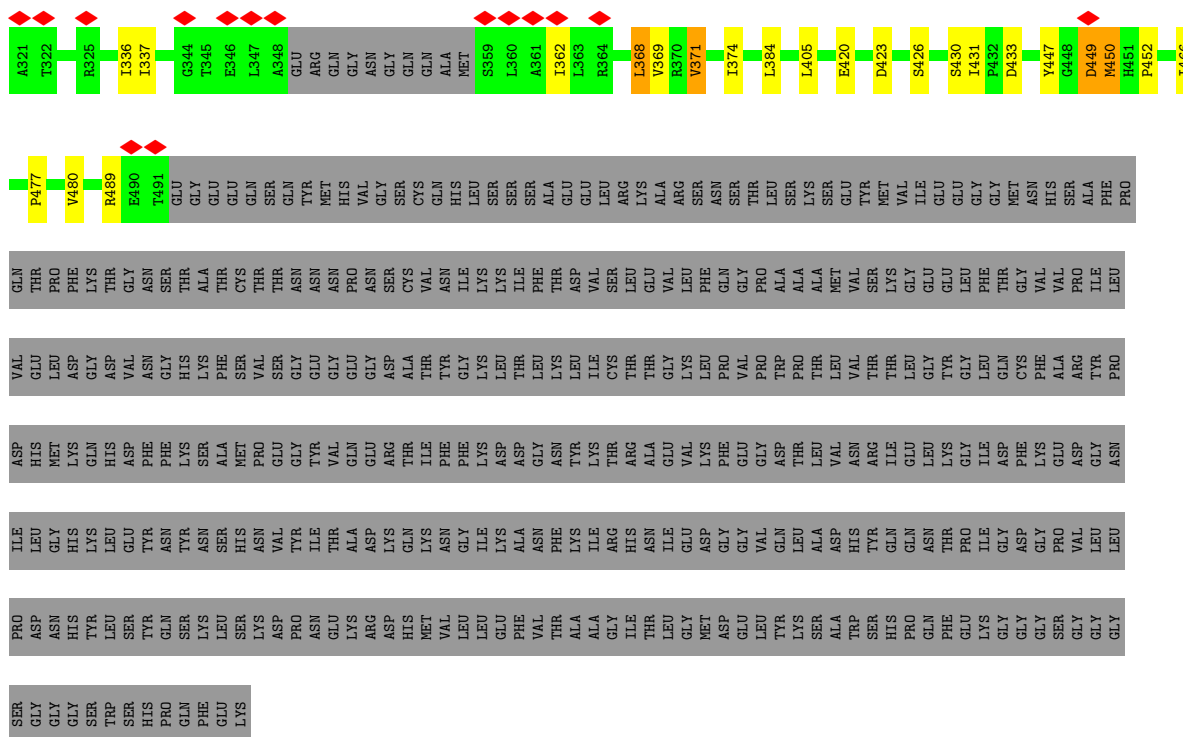


MET
ASP
GLU
ARG
LEU
LEU
LEU
LEU
LEU
LEU
ARG
SER
PRO
PRO
PRO
PRO
SER
ALA
ARG
ARG
ALA
HIS
PRO
PRO
GLN
ARG
PRO
ALA
SER
SER
GLY
GLY
ALA
HIS
THR
LEU
VAL
THR
ASN
HIS
THR
LEU
PHE
GLY
LEU
ILE

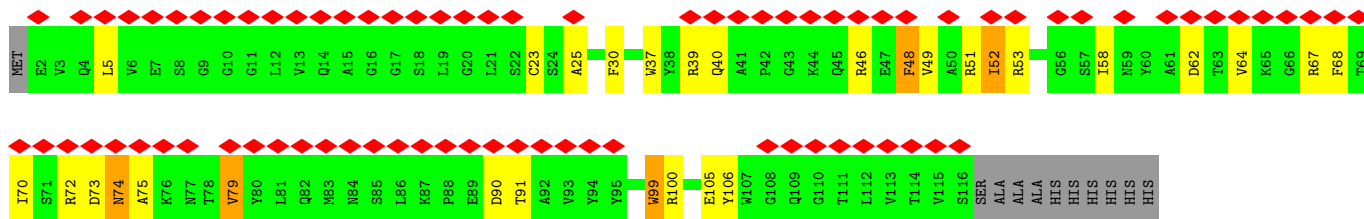


● Molecule 1: Potassium voltage-gated channel subfamily A member 3, Green fluorescent protein fusion

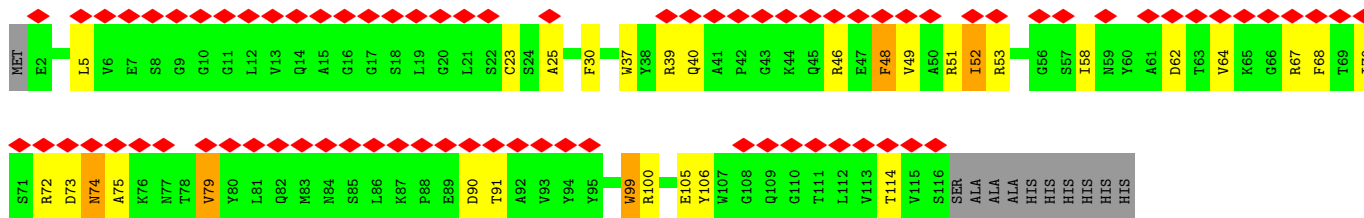




• Molecule 2: Nanobody A0194009G09

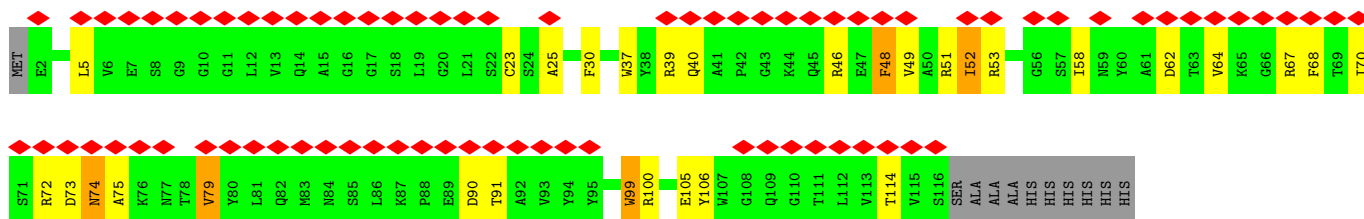


• Molecule 2: Nanobody A0194009G09

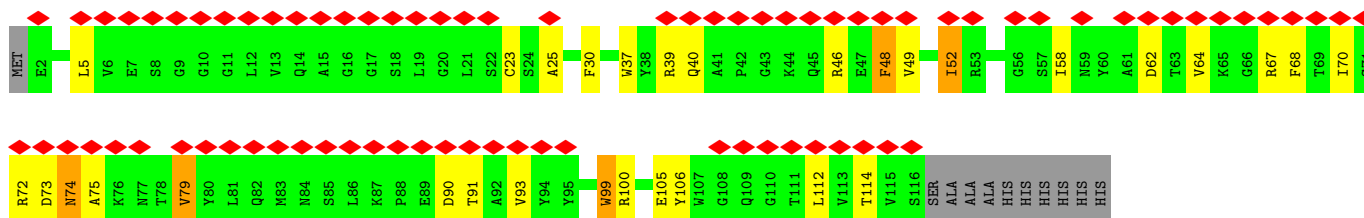


• Molecule 2: Nanobody A0194009G09





• Molecule 2: Nanobody A0194009G09



4 Experimental information

Property	Value	Source
EM reconstruction method	SINGLE PARTICLE	Depositor
Imposed symmetry	POINT, Not provided	
Number of particles used	123722	Depositor
Resolution determination method	FSC 0.143 CUT-OFF	Depositor
CTF correction method	PHASE FLIPPING AND AMPLITUDE CORRECTION	Depositor
Microscope	FEI TITAN KRIOS	Depositor
Voltage (kV)	300	Depositor
Electron dose ($e^-/\text{\AA}^2$)	54	Depositor
Minimum defocus (nm)	1300	Depositor
Maximum defocus (nm)	2000	Depositor
Magnification	Not provided	
Image detector	GATAN K3 BIOQUANTUM (6k x 4k)	Depositor
Maximum map value	4.608	Depositor
Minimum map value	-2.761	Depositor
Average map value	0.003	Depositor
Map value standard deviation	0.062	Depositor
Recommended contour level	0.591	Depositor
Map size (Å)	354.432, 354.432, 354.432	wwPDB
Map dimensions	416, 416, 416	wwPDB
Map angles (°)	90.0, 90.0, 90.0	wwPDB
Pixel spacing (Å)	0.852, 0.852, 0.852	Depositor

5 Model quality [i](#)

5.1 Standard geometry [i](#)

Bond lengths and bond angles in the following residue types are not validated in this section:
K

The Z score for a bond length (or angle) is the number of standard deviations the observed value is removed from the expected value. A bond length (or angle) with $|Z| > 5$ is considered an outlier worth inspection. RMSZ is the root-mean-square of all Z scores of the bond lengths (or angles).

Mol	Chain	Bond lengths		Bond angles	
		RMSZ	# $ Z > 5$	RMSZ	# $ Z > 5$
1	A	0.81	0/3010	1.13	5/4079 (0.1%)
1	B	0.82	0/3010	1.13	5/4079 (0.1%)
1	C	0.82	0/3010	1.13	5/4079 (0.1%)
1	D	0.81	0/3010	1.13	5/4079 (0.1%)
2	E	0.89	0/903	1.25	5/1219 (0.4%)
2	F	0.89	0/903	1.25	5/1219 (0.4%)
2	G	0.89	0/903	1.25	5/1219 (0.4%)
2	H	0.89	0/903	1.24	5/1219 (0.4%)
All	All	0.83	0/15652	1.16	40/21192 (0.2%)

There are no bond length outliers.

All (40) bond angle outliers are listed below:

Mol	Chain	Res	Type	Atoms	Z	Observed(°)	Ideal(°)
1	B	447	TYR	N-CA-C	6.19	117.69	111.07
1	A	447	TYR	N-CA-C	6.17	117.67	111.07
1	D	447	TYR	N-CA-C	6.17	117.67	111.07
1	C	447	TYR	N-CA-C	6.15	117.66	111.07
1	B	369	VAL	N-CA-C	-5.98	105.93	112.80
1	C	369	VAL	N-CA-C	-5.96	105.94	112.80
1	A	369	VAL	N-CA-C	-5.96	105.95	112.80
1	D	369	VAL	N-CA-C	-5.95	105.96	112.80
2	H	74	ASN	N-CA-C	-5.85	106.54	113.38
2	E	74	ASN	N-CA-C	-5.81	106.58	113.38
2	F	74	ASN	N-CA-C	-5.80	106.60	113.38
2	G	74	ASN	N-CA-C	-5.78	106.61	113.38
2	G	30	PHE	N-CA-C	-5.42	106.66	113.28
2	F	30	PHE	N-CA-C	-5.42	106.67	113.28
2	E	30	PHE	N-CA-C	-5.41	106.68	113.28
2	H	30	PHE	N-CA-C	-5.38	106.72	113.28

Continued on next page...

Continued from previous page...

Mol	Chain	Res	Type	Atoms	Z	Observed(°)	Ideal(°)
1	A	216	PHE	N-CA-C	-5.19	107.01	113.55
1	B	216	PHE	N-CA-C	-5.18	107.02	113.55
1	D	216	PHE	N-CA-C	-5.18	107.02	113.55
1	C	216	PHE	N-CA-C	-5.18	107.03	113.55
2	F	106	TYR	CA-C-O	-5.13	115.11	121.11
2	E	106	TYR	CA-C-O	-5.12	115.12	121.11
1	D	166	GLY	CA-C-N	-5.11	117.88	123.30
1	D	166	GLY	C-N-CA	-5.11	117.88	123.30
2	H	106	TYR	CA-C-O	-5.11	115.14	121.11
2	G	106	TYR	CA-C-O	-5.08	115.17	121.11
1	C	166	GLY	CA-C-N	-5.08	117.92	123.30
1	C	166	GLY	C-N-CA	-5.08	117.92	123.30
1	B	166	GLY	CA-C-N	-5.07	117.93	123.30
1	B	166	GLY	C-N-CA	-5.07	117.93	123.30
1	A	166	GLY	CA-C-N	-5.07	117.93	123.30
1	A	166	GLY	C-N-CA	-5.07	117.93	123.30
2	G	49	VAL	N-CA-C	-5.06	106.75	111.45
2	E	49	VAL	N-CA-C	-5.05	106.76	111.45
2	H	49	VAL	N-CA-C	-5.04	106.76	111.45
2	E	48	PHE	CB-CA-C	5.03	118.43	109.38
2	F	49	VAL	N-CA-C	-5.03	106.78	111.45
2	H	48	PHE	CB-CA-C	5.01	118.40	109.38
2	F	48	PHE	CB-CA-C	5.01	118.39	109.38
2	G	48	PHE	CB-CA-C	5.00	118.39	109.38

There are no chirality outliers.

There are no planarity outliers.

5.2 Too-close contacts [i](#)

In the following table, the Non-H and H(model) columns list the number of non-hydrogen atoms and hydrogen atoms in the chain respectively. The H(added) column lists the number of hydrogen atoms added and optimized by MolProbity. The Clashes column lists the number of clashes within the asymmetric unit, whereas Symm-Clashes lists symmetry-related clashes.

Mol	Chain	Non-H	H(model)	H(added)	Clashes	Symm-Clashes
1	A	2935	0	2955	39	0
1	B	2935	0	2955	45	0
1	C	2935	0	2955	44	0
1	D	2935	0	2955	41	0
2	E	885	0	856	16	0

Continued on next page...

Continued from previous page...

Mol	Chain	Non-H	H(model)	H(added)	Clashes	Symm-Clashes
2	F	885	0	856	15	0
2	G	885	0	856	16	0
2	H	885	0	856	15	0
3	A	3	0	0	0	0
All	All	15283	0	15244	198	0

The all-atom clashscore is defined as the number of clashes found per 1000 atoms (including hydrogen atoms). The all-atom clashscore for this structure is 7.

All (198) close contacts within the same asymmetric unit are listed below, sorted by their clash magnitude.

Atom-1	Atom-2	Interatomic distance (Å)	Clash overlap (Å)
1:A:105:ARG:NH2	1:B:144:ARG:NH1	2.31	0.79
1:B:105:ARG:NH2	1:C:144:ARG:NH1	2.32	0.77
1:A:144:ARG:NH1	1:D:105:ARG:NH2	2.31	0.77
1:C:105:ARG:NH2	1:D:144:ARG:NH1	2.33	0.75
1:D:106:VAL:HG21	1:D:122:LEU:HD21	1.74	0.70
1:B:106:VAL:HG21	1:B:122:LEU:HD21	1.74	0.69
1:C:106:VAL:HG21	1:C:122:LEU:HD21	1.74	0.69
1:A:106:VAL:HG21	1:A:122:LEU:HD21	1.74	0.68
1:A:184:ILE:HG22	1:A:189:LEU:HD12	1.79	0.64
1:D:184:ILE:HG22	1:D:189:LEU:HD12	1.79	0.64
1:C:184:ILE:HG22	1:C:189:LEU:HD12	1.79	0.63
1:B:184:ILE:HG22	1:B:189:LEU:HD12	1.79	0.63
1:A:431:ILE:H	1:B:255:THR:HG21	1.62	0.61
1:B:252:CYS:O	1:B:255:THR:HG22	2.01	0.61
1:A:252:CYS:O	1:A:255:THR:HG22	2.01	0.61
1:C:431:ILE:H	1:D:255:THR:HG21	1.65	0.61
1:C:252:CYS:O	1:C:255:THR:HG22	2.01	0.60
1:A:144:ARG:HH11	1:D:105:ARG:HH22	1.49	0.60
1:D:252:CYS:O	1:D:255:THR:HG22	2.01	0.60
1:A:105:ARG:HH22	1:B:144:ARG:HH11	1.50	0.60
1:C:105:ARG:HH22	1:D:144:ARG:NH1	1.99	0.60
1:A:144:ARG:NH1	1:D:105:ARG:HH22	1.99	0.60
1:B:105:ARG:HH22	1:C:144:ARG:NH1	1.99	0.60
1:B:431:ILE:H	1:C:255:THR:HG21	1.66	0.60
1:A:431:ILE:H	1:B:255:THR:CG2	2.15	0.59
2:E:23:CYS:HB3	2:E:79:VAL:HG13	1.85	0.58
2:F:23:CYS:HB3	2:F:79:VAL:HG13	1.85	0.58
2:G:23:CYS:HB3	2:G:79:VAL:HG13	1.85	0.58
1:B:105:ARG:HH22	1:C:144:ARG:HH11	1.50	0.57

Continued on next page...

Continued from previous page...

Atom-1	Atom-2	Interatomic distance (Å)	Clash overlap (Å)
2:H:23:CYS:HB3	2:H:79:VAL:HG13	1.85	0.57
1:C:105:ARG:HH22	1:D:144:ARG:HH11	1.51	0.57
2:G:73:ASP:C	2:G:75:ALA:H	2.14	0.55
1:B:110:ILE:HG13	1:B:156:PHE:CD2	2.42	0.55
1:A:213:ARG:CZ	1:A:218:ARG:HD2	2.37	0.55
2:E:73:ASP:C	2:E:75:ALA:N	2.65	0.55
1:C:110:ILE:HG13	1:C:156:PHE:CD2	2.42	0.55
1:A:110:ILE:HG13	1:A:156:PHE:CD2	2.42	0.55
2:F:73:ASP:C	2:F:75:ALA:H	2.14	0.55
1:D:213:ARG:CZ	1:D:218:ARG:HD2	2.37	0.54
1:C:431:ILE:H	1:D:255:THR:CG2	2.21	0.54
1:A:129:LEU:HD12	1:A:135:ARG:HB3	1.89	0.54
1:B:213:ARG:CZ	1:B:218:ARG:HD2	2.37	0.54
1:C:129:LEU:HD12	1:C:135:ARG:HB3	1.89	0.54
1:D:110:ILE:HG13	1:D:156:PHE:CD2	2.42	0.54
2:E:73:ASP:C	2:E:75:ALA:H	2.14	0.54
2:H:73:ASP:C	2:H:75:ALA:H	2.14	0.54
1:D:230:SER:OG	1:D:231:GLY:N	2.41	0.54
2:E:64:VAL:HB	2:E:68:PHE:CD1	2.43	0.53
2:E:99:TRP:NE1	1:B:266:PRO:HG3	2.22	0.53
2:H:64:VAL:HB	2:H:68:PHE:CD1	2.43	0.53
1:C:213:ARG:CZ	1:C:218:ARG:HD2	2.37	0.53
1:C:230:SER:OG	1:C:231:GLY:N	2.41	0.53
1:B:129:LEU:HD12	1:B:135:ARG:HB3	1.89	0.53
2:G:99:TRP:NE1	1:D:266:PRO:HG3	2.24	0.53
1:A:105:ARG:HH22	1:B:144:ARG:NH1	2.03	0.53
2:F:64:VAL:HB	2:F:68:PHE:CD1	2.43	0.53
1:B:230:SER:OG	1:B:231:GLY:N	2.41	0.52
1:D:129:LEU:HD12	1:D:135:ARG:HB3	1.89	0.52
2:G:64:VAL:HB	2:G:68:PHE:CD1	2.43	0.52
1:B:431:ILE:H	1:C:255:THR:CG2	2.22	0.52
1:B:119:LEU:HD23	1:B:122:LEU:HD11	1.92	0.52
2:F:73:ASP:C	2:F:75:ALA:N	2.65	0.51
1:D:119:LEU:HD23	1:D:122:LEU:HD11	1.92	0.51
2:G:73:ASP:C	2:G:75:ALA:N	2.65	0.51
1:B:172:PRO:HB2	1:B:175:VAL:HG23	1.93	0.51
1:C:119:LEU:HD23	1:C:122:LEU:HD11	1.92	0.51
1:C:172:PRO:HB2	1:C:175:VAL:HG23	1.93	0.51
1:A:119:LEU:HD23	1:A:122:LEU:HD11	1.92	0.50
1:A:172:PRO:HB2	1:A:175:VAL:HG23	1.93	0.50
1:A:230:SER:OG	1:A:231:GLY:N	2.41	0.50

Continued on next page...

Continued from previous page...

Atom-1	Atom-2	Interatomic distance (Å)	Clash overlap (Å)
1:A:255:THR:HG21	1:D:431:ILE:H	1.76	0.50
1:D:172:PRO:HB2	1:D:175:VAL:HG23	1.93	0.49
2:H:73:ASP:C	2:H:75:ALA:N	2.65	0.49
1:D:212:PRO:HD3	1:D:318:PRO:HB3	1.96	0.48
1:C:212:PRO:HD3	1:C:318:PRO:HB3	1.96	0.48
1:A:212:PRO:HD3	1:A:318:PRO:HB3	1.96	0.48
1:A:371:VAL:O	1:A:374:ILE:HG22	2.14	0.47
1:C:371:VAL:O	1:C:374:ILE:HG22	2.14	0.47
2:F:40:GLN:HB2	2:F:46:ARG:HG2	1.96	0.47
1:B:212:PRO:HD3	1:B:318:PRO:HB3	1.96	0.47
2:G:99:TRP:HB3	2:G:105:GLU:HA	1.97	0.47
2:H:52:ILE:HG23	2:H:70:ILE:HG23	1.96	0.47
1:B:371:VAL:O	1:B:374:ILE:HG22	2.14	0.47
1:B:368:LEU:HD23	1:B:371:VAL:HG21	1.97	0.47
1:C:368:LEU:HD23	1:C:371:VAL:HG21	1.97	0.47
1:A:368:LEU:HD23	1:A:371:VAL:HG21	1.97	0.47
2:H:40:GLN:HB2	2:H:46:ARG:HG2	1.96	0.47
2:E:99:TRP:HB3	2:E:105:GLU:HA	1.97	0.46
1:D:368:LEU:HD23	1:D:371:VAL:HG21	1.97	0.46
2:F:90:ASP:O	2:F:91:THR:C	2.59	0.46
2:F:99:TRP:NE1	1:C:266:PRO:HG3	2.30	0.46
1:D:371:VAL:O	1:D:374:ILE:HG22	2.14	0.46
2:G:90:ASP:O	2:G:91:THR:C	2.59	0.46
2:H:90:ASP:O	2:H:91:THR:C	2.59	0.46
2:H:99:TRP:HB3	2:H:105:GLU:HA	1.97	0.46
2:G:40:GLN:HB2	2:G:46:ARG:HG2	1.96	0.46
2:E:40:GLN:HB2	2:E:46:ARG:HG2	1.96	0.46
2:F:99:TRP:HB3	2:F:105:GLU:HA	1.97	0.46
2:E:72:ARG:C	2:E:74:ASN:N	2.74	0.45
1:C:204:LEU:HD22	1:C:489:ARG:HG2	1.99	0.45
1:B:384:LEU:HD23	1:B:384:LEU:HA	1.83	0.45
2:G:52:ILE:HG23	2:G:70:ILE:HG23	1.99	0.45
2:E:90:ASP:O	2:E:91:THR:C	2.59	0.45
1:B:204:LEU:HD22	1:B:489:ARG:HG2	1.99	0.45
1:A:227:PRO:HA	1:A:233:ALA:HB1	1.99	0.45
1:C:343:LEU:HD12	1:C:343:LEU:HA	1.85	0.45
2:F:5:LEU:HD23	2:F:25:ALA:HB2	1.99	0.45
2:H:52:ILE:HG22	2:H:58:ILE:HG12	1.99	0.45
1:B:420:GLU:HG2	1:B:426:SER:HB2	1.99	0.45
1:A:384:LEU:HA	1:A:384:LEU:HD23	1.83	0.45
2:E:99:TRP:CE2	1:B:266:PRO:HG3	2.52	0.45

Continued on next page...

Continued from previous page...

Atom-1	Atom-2	Interatomic distance (Å)	Clash overlap (Å)
2:H:5:LEU:HD23	2:H:25:ALA:HB2	1.99	0.45
1:A:343:LEU:HD12	1:A:343:LEU:HA	1.85	0.44
1:D:204:LEU:HD22	1:D:489:ARG:HG2	1.99	0.44
1:A:423:ASP:HA	1:A:424:PRO:HD3	1.86	0.44
1:B:227:PRO:HA	1:B:233:ALA:HB1	1.99	0.44
1:B:256:LEU:HD12	1:B:256:LEU:HA	1.85	0.44
1:C:227:PRO:HA	1:C:233:ALA:HB1	1.99	0.44
1:D:110:ILE:HG13	1:D:156:PHE:CG	2.53	0.44
1:D:227:PRO:HA	1:D:233:ALA:HB1	1.99	0.44
1:A:466:ILE:HD11	1:B:405:LEU:HD22	2.00	0.44
2:E:5:LEU:HD23	2:E:25:ALA:HB2	1.99	0.44
2:G:99:TRP:CE2	1:D:266:PRO:HG3	2.52	0.44
1:A:204:LEU:HD22	1:A:489:ARG:HG2	1.99	0.44
1:B:110:ILE:HG13	1:B:156:PHE:CG	2.53	0.44
1:A:122:LEU:HA	1:A:163:TYR:HD2	1.83	0.44
1:A:420:GLU:HG2	1:A:426:SER:HB2	1.99	0.44
2:E:52:ILE:HG22	2:E:58:ILE:HG12	1.99	0.44
2:G:72:ARG:C	2:G:74:ASN:N	2.74	0.44
1:C:420:GLU:HG2	1:C:426:SER:HB2	1.99	0.44
2:E:53:ARG:NH1	1:B:261:ASP:OD1	2.51	0.44
2:F:52:ILE:HG23	2:F:70:ILE:HG23	1.99	0.44
2:F:64:VAL:HB	2:F:68:PHE:CG	2.53	0.44
2:G:5:LEU:HD23	2:G:25:ALA:HB2	1.99	0.44
2:G:64:VAL:HB	2:G:68:PHE:CG	2.53	0.44
2:E:52:ILE:HG23	2:E:70:ILE:HG23	1.99	0.43
2:F:52:ILE:HG22	2:F:58:ILE:HG12	1.99	0.43
2:F:72:ARG:C	2:F:74:ASN:N	2.74	0.43
1:C:466:ILE:HD11	1:D:405:LEU:HD22	2.00	0.43
1:D:384:LEU:HA	1:D:384:LEU:HD23	1.83	0.43
1:B:430:SER:HB2	1:B:433:ASP:HB2	2.00	0.43
1:A:255:THR:CG2	1:D:431:ILE:H	2.31	0.43
1:C:110:ILE:HG13	1:C:156:PHE:CG	2.53	0.43
1:C:122:LEU:HA	1:C:163:TYR:HD2	1.83	0.43
2:G:52:ILE:HG22	2:G:58:ILE:HG12	1.99	0.43
1:A:266:PRO:HG3	2:H:99:TRP:NE1	2.33	0.43
1:B:343:LEU:HD12	1:B:343:LEU:HA	1.85	0.43
1:D:122:LEU:HA	1:D:163:TYR:HD2	1.83	0.43
1:D:311:LEU:HD23	1:D:311:LEU:HA	1.85	0.43
1:A:110:ILE:HG13	1:A:156:PHE:CG	2.53	0.43
2:E:64:VAL:HB	2:E:68:PHE:CG	2.53	0.43
2:H:64:VAL:HB	2:H:68:PHE:CG	2.53	0.43

Continued on next page...

Continued from previous page...

Atom-1	Atom-2	Interatomic distance (Å)	Clash overlap (Å)
1:D:420:GLU:HG2	1:D:426:SER:HB2	1.99	0.43
1:A:430:SER:HB2	1:A:433:ASP:HB2	2.00	0.43
1:B:394:SER:HG	1:B:482:ASN:HD22	1.63	0.43
2:H:72:ARG:C	2:H:74:ASN:N	2.74	0.43
1:C:394:SER:HG	1:C:482:ASN:HD22	1.63	0.43
1:C:430:SER:HB2	1:C:433:ASP:HB2	2.00	0.42
1:B:122:LEU:HA	1:B:163:TYR:HD2	1.83	0.42
1:B:466:ILE:HD11	1:C:405:LEU:HD22	2.00	0.42
1:D:430:SER:HB2	1:D:433:ASP:HB2	2.00	0.42
1:C:238:ILE:HD13	1:C:238:ILE:HA	1.89	0.42
1:D:238:ILE:HD13	1:D:238:ILE:HA	1.90	0.42
1:A:311:LEU:HD23	1:A:311:LEU:HA	1.85	0.42
1:B:418:PHE:CD2	1:C:368:LEU:HG	2.55	0.42
1:A:256:LEU:HD12	1:A:256:LEU:HA	1.85	0.42
1:D:336:ILE:HD13	1:D:336:ILE:HA	1.90	0.42
1:B:347:LEU:HD23	1:B:347:LEU:HA	1.88	0.42
1:C:418:PHE:CD2	1:D:368:LEU:HG	2.55	0.42
1:A:400:LEU:HD23	1:A:400:LEU:HA	1.87	0.42
2:F:51:ARG:HH11	2:F:53:ARG:HD3	1.85	0.42
1:B:129:LEU:HB3	1:B:187:TYR:O	2.20	0.41
1:B:260:ARG:HE	1:B:260:ARG:HB2	1.66	0.41
1:C:336:ILE:HD13	1:C:336:ILE:HA	1.90	0.41
1:D:129:LEU:HB3	1:D:187:TYR:O	2.20	0.41
1:D:337:ILE:HD13	1:D:337:ILE:HA	1.91	0.41
1:A:129:LEU:HB3	1:A:187:TYR:O	2.20	0.41
1:B:311:LEU:HA	1:B:311:LEU:HD23	1.85	0.41
1:A:477:PRO:HA	1:A:480:VAL:HG22	2.03	0.41
2:E:51:ARG:HH11	2:E:53:ARG:HD3	1.85	0.41
1:B:423:ASP:HA	1:B:424:PRO:HD3	1.86	0.41
1:B:477:PRO:HA	1:B:480:VAL:HG22	2.03	0.41
1:C:129:LEU:HB3	1:C:187:TYR:O	2.20	0.41
1:D:449:ASP:C	1:D:450:MET:HG2	2.46	0.41
2:F:91:THR:HA	2:F:114:THR:HA	2.03	0.41
1:C:213:ARG:H	1:C:218:ARG:HB3	1.86	0.41
1:C:477:PRO:HA	1:C:480:VAL:HG22	2.03	0.41
1:C:177:ILE:H	1:C:177:ILE:HG12	1.59	0.40
1:A:405:LEU:HD22	1:D:466:ILE:HD11	2.02	0.40
1:B:304:ILE:HD13	1:B:304:ILE:HA	1.90	0.40
2:G:91:THR:HA	2:G:114:THR:HA	2.03	0.40
1:D:477:PRO:HA	1:D:480:VAL:HG22	2.03	0.40
2:H:91:THR:HA	2:H:114:THR:HA	2.03	0.40

Continued on next page...

Continued from previous page...

Atom-1	Atom-2	Interatomic distance (Å)	Clash overlap (Å)
2:G:51:ARG:HH11	2:G:53:ARG:HD3	1.85	0.40
2:H:93:VAL:HG12	2:H:112:LEU:HB3	2.04	0.40
1:C:311:LEU:HD23	1:C:311:LEU:HA	1.85	0.40
1:C:384:LEU:HD23	1:C:384:LEU:HA	1.83	0.40
1:C:400:LEU:HD23	1:C:400:LEU:HA	1.87	0.40

There are no symmetry-related clashes.

5.3 Torsion angles [i](#)

5.3.1 Protein backbone [i](#)

In the following table, the Percentiles column shows the percent Ramachandran outliers of the chain as a percentile score with respect to all PDB entries followed by that with respect to all EM entries.

The Analysed column shows the number of residues for which the backbone conformation was analysed, and the total number of residues.

Mol	Chain	Analysed	Favoured	Allowed	Outliers	Percentiles	
1	A	356/856 (42%)	339 (95%)	17 (5%)	0	100	100
1	B	356/856 (42%)	339 (95%)	17 (5%)	0	100	100
1	C	356/856 (42%)	339 (95%)	17 (5%)	0	100	100
1	D	356/856 (42%)	339 (95%)	17 (5%)	0	100	100
2	E	113/126 (90%)	105 (93%)	8 (7%)	0	100	100
2	F	113/126 (90%)	105 (93%)	8 (7%)	0	100	100
2	G	113/126 (90%)	105 (93%)	8 (7%)	0	100	100
2	H	113/126 (90%)	105 (93%)	8 (7%)	0	100	100
All	All	1876/3928 (48%)	1776 (95%)	100 (5%)	0	100	100

There are no Ramachandran outliers to report.

5.3.2 Protein sidechains [i](#)

In the following table, the Percentiles column shows the percent sidechain outliers of the chain as a percentile score with respect to all PDB entries followed by that with respect to all EM entries.

The Analysed column shows the number of residues for which the sidechain conformation was analysed, and the total number of residues.

Mol	Chain	Analysed	Rotameric	Outliers	Percentiles	
1	A	320/724 (44%)	301 (94%)	19 (6%)	18	45
1	B	320/724 (44%)	301 (94%)	19 (6%)	18	45
1	C	320/724 (44%)	301 (94%)	19 (6%)	18	45
1	D	320/724 (44%)	301 (94%)	19 (6%)	18	45
2	E	92/100 (92%)	83 (90%)	9 (10%)	7	27
2	F	92/100 (92%)	83 (90%)	9 (10%)	7	27
2	G	92/100 (92%)	83 (90%)	9 (10%)	7	27
2	H	92/100 (92%)	83 (90%)	9 (10%)	7	27
All	All	1648/3296 (50%)	1536 (93%)	112 (7%)	16	41

All (112) residues with a non-rotameric sidechain are listed below:

Mol	Chain	Res	Type
1	A	105	ARG
1	A	106	VAL
1	A	114	ARG
1	A	119	LEU
1	A	170	ARG
1	A	173	VAL
1	A	177	ILE
1	A	184	ILE
1	A	208	GLU
1	A	218	ARG
1	A	262	GLU
1	A	300	THR
1	A	362	ILE
1	A	368	LEU
1	A	371	VAL
1	A	423	ASP
1	A	449	ASP
1	A	450	MET
1	A	452	PRO
2	E	37	TRP
2	E	39	ARG
2	E	48	PHE
2	E	52	ILE
2	E	62	ASP

Continued on next page...

Continued from previous page...

Mol	Chain	Res	Type
2	E	67	ARG
2	E	79	VAL
2	E	99	TRP
2	E	100	ARG
2	F	37	TRP
2	F	39	ARG
2	F	48	PHE
2	F	52	ILE
2	F	62	ASP
2	F	67	ARG
2	F	79	VAL
2	F	99	TRP
2	F	100	ARG
2	G	37	TRP
2	G	39	ARG
2	G	48	PHE
2	G	52	ILE
2	G	62	ASP
2	G	67	ARG
2	G	79	VAL
2	G	99	TRP
2	G	100	ARG
2	H	37	TRP
2	H	39	ARG
2	H	48	PHE
2	H	52	ILE
2	H	62	ASP
2	H	67	ARG
2	H	79	VAL
2	H	99	TRP
2	H	100	ARG
1	B	105	ARG
1	B	106	VAL
1	B	114	ARG
1	B	119	LEU
1	B	170	ARG
1	B	173	VAL
1	B	177	ILE
1	B	184	ILE
1	B	208	GLU
1	B	218	ARG
1	B	262	GLU

Continued on next page...

Continued from previous page...

Mol	Chain	Res	Type
1	B	300	THR
1	B	362	ILE
1	B	368	LEU
1	B	371	VAL
1	B	423	ASP
1	B	449	ASP
1	B	450	MET
1	B	452	PRO
1	C	105	ARG
1	C	106	VAL
1	C	114	ARG
1	C	119	LEU
1	C	170	ARG
1	C	173	VAL
1	C	177	ILE
1	C	184	ILE
1	C	208	GLU
1	C	218	ARG
1	C	262	GLU
1	C	300	THR
1	C	362	ILE
1	C	368	LEU
1	C	371	VAL
1	C	423	ASP
1	C	449	ASP
1	C	450	MET
1	C	452	PRO
1	D	105	ARG
1	D	106	VAL
1	D	114	ARG
1	D	119	LEU
1	D	170	ARG
1	D	173	VAL
1	D	177	ILE
1	D	184	ILE
1	D	208	GLU
1	D	218	ARG
1	D	262	GLU
1	D	300	THR
1	D	362	ILE
1	D	368	LEU
1	D	371	VAL

Continued on next page...

Continued from previous page...

Mol	Chain	Res	Type
1	D	423	ASP
1	D	449	ASP
1	D	450	MET
1	D	452	PRO

Sometimes sidechains can be flipped to improve hydrogen bonding and reduce clashes. All (19) such sidechains are listed below:

Mol	Chain	Res	Type
1	A	124	GLN
1	A	145	ASN
1	A	217	GLN
2	E	82	GLN
2	E	84	ASN
2	F	82	GLN
2	F	84	ASN
2	G	82	GLN
2	G	84	ASN
2	H	82	GLN
2	H	84	ASN
1	B	124	GLN
1	B	217	GLN
1	C	124	GLN
1	C	145	ASN
1	C	217	GLN
1	D	124	GLN
1	D	145	ASN
1	D	217	GLN

5.3.3 RNA [i](#)

There are no RNA molecules in this entry.

5.4 Non-standard residues in protein, DNA, RNA chains [i](#)

There are no non-standard protein/DNA/RNA residues in this entry.

5.5 Carbohydrates [i](#)

There are no oligosaccharides in this entry.

5.6 Ligand geometry [i](#)

Of 3 ligands modelled in this entry, 3 are monoatomic - leaving 0 for Mogul analysis.

There are no bond length outliers.

There are no bond angle outliers.

There are no chirality outliers.

There are no torsion outliers.

There are no ring outliers.

No monomer is involved in short contacts.

5.7 Other polymers [i](#)

There are no such residues in this entry.

5.8 Polymer linkage issues [i](#)

There are no chain breaks in this entry.

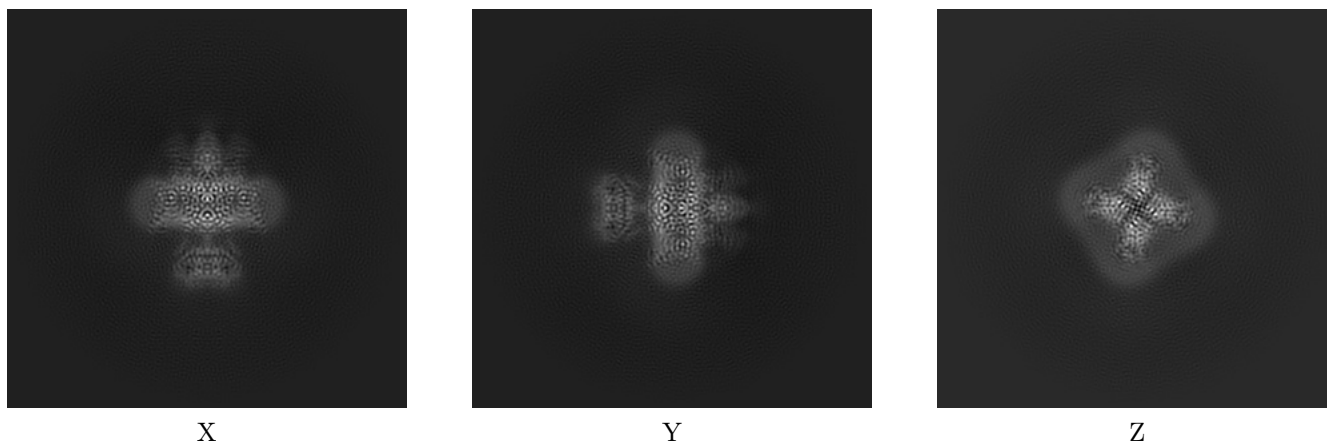
6 Map visualisation [i](#)

This section contains visualisations of the EMDB entry EMD-25417. These allow visual inspection of the internal detail of the map and identification of artifacts.

No raw map or half-maps were deposited for this entry and therefore no images, graphs, etc. pertaining to the raw map can be shown.

6.1 Orthogonal projections [i](#)

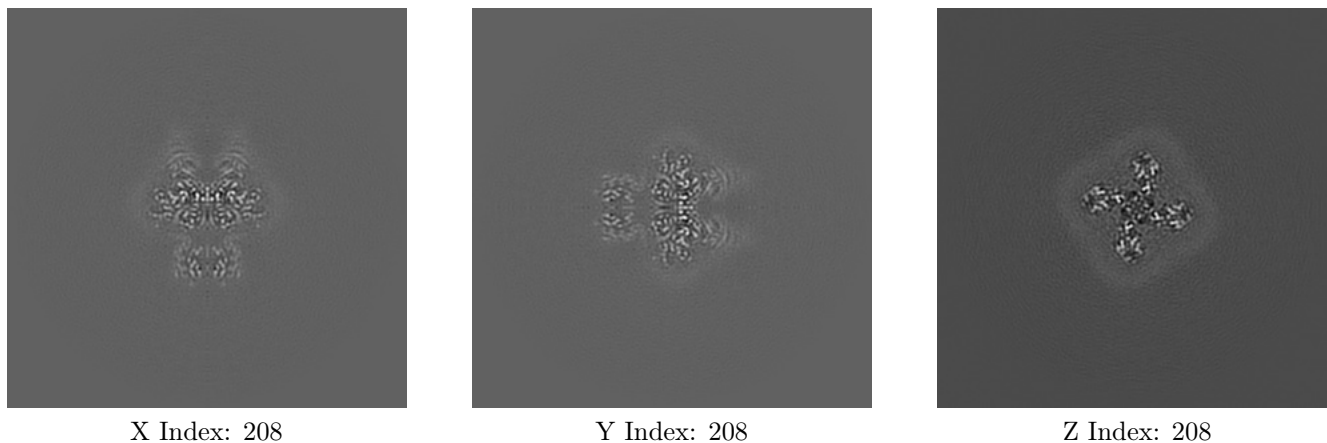
6.1.1 Primary map



The images above show the map projected in three orthogonal directions.

6.2 Central slices [i](#)

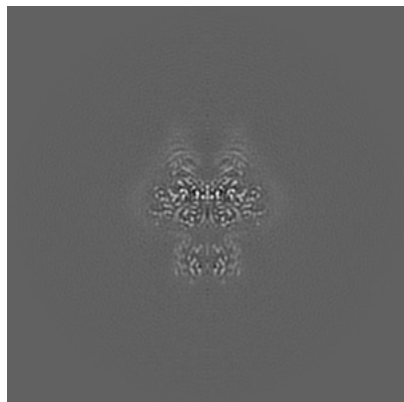
6.2.1 Primary map



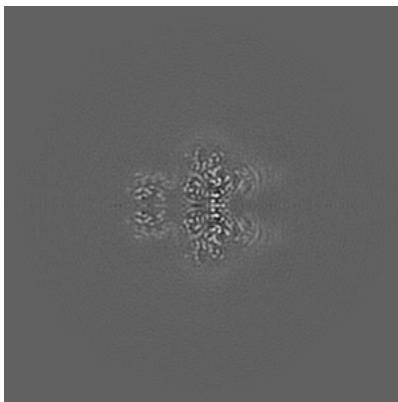
The images above show central slices of the map in three orthogonal directions.

6.3 Largest variance slices [i](#)

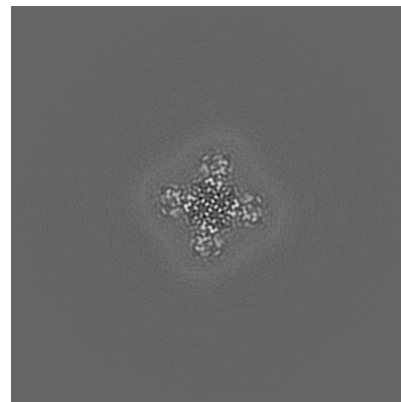
6.3.1 Primary map



X Index: 208



Y Index: 208

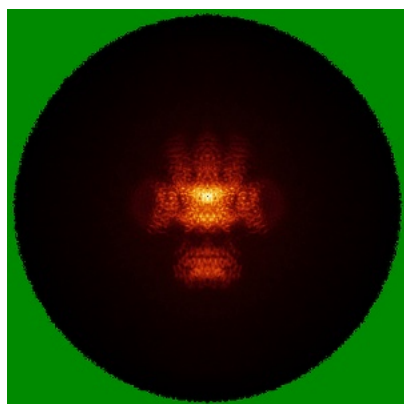


Z Index: 224

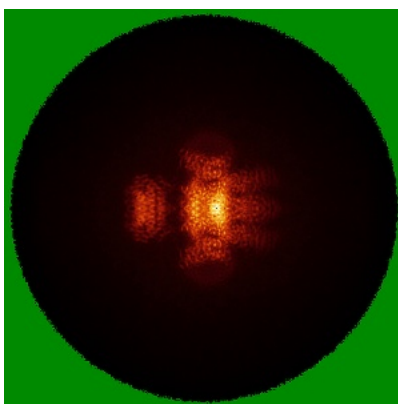
The images above show the largest variance slices of the map in three orthogonal directions.

6.4 Orthogonal standard-deviation projections (False-color) [i](#)

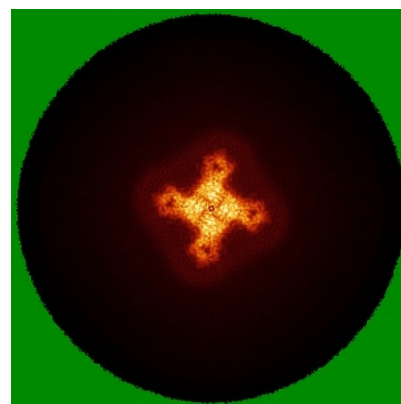
6.4.1 Primary map



X



Y

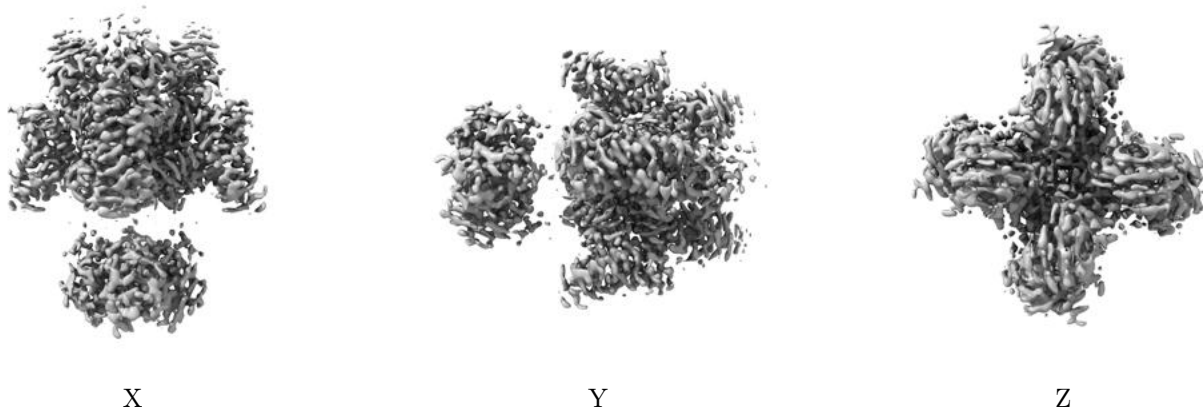


Z

The images above show the map standard deviation projections with false color in three orthogonal directions. Minimum values are shown in green, max in blue, and dark to light orange shades represent small to large values respectively.

6.5 Orthogonal surface views [i](#)

6.5.1 Primary map



The images above show the 3D surface view of the map at the recommended contour level 0.591. These images, in conjunction with the slice images, may facilitate assessment of whether an appropriate contour level has been provided.

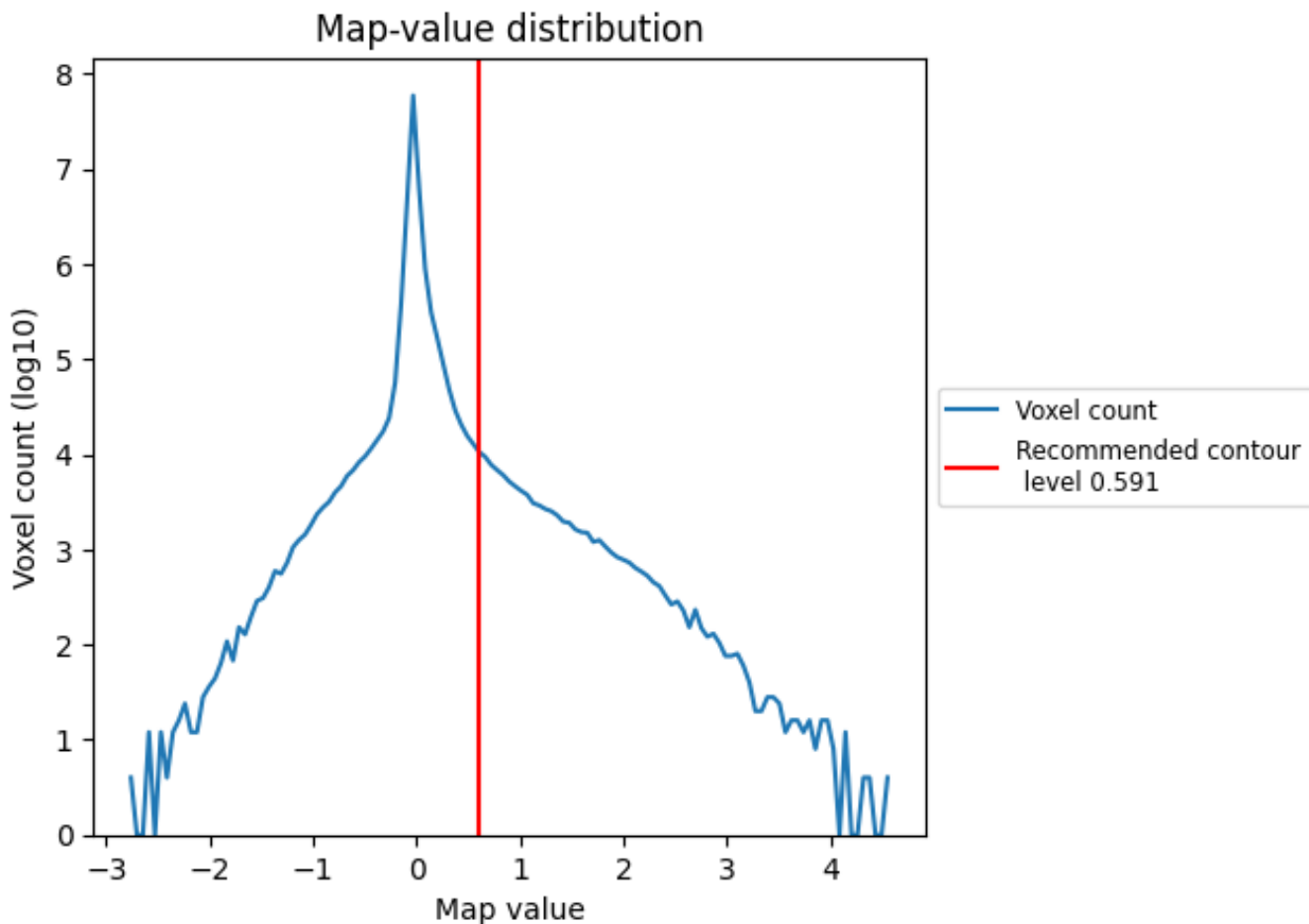
6.6 Mask visualisation [i](#)

This section was not generated. No masks/segmentation were deposited.

7 Map analysis [i](#)

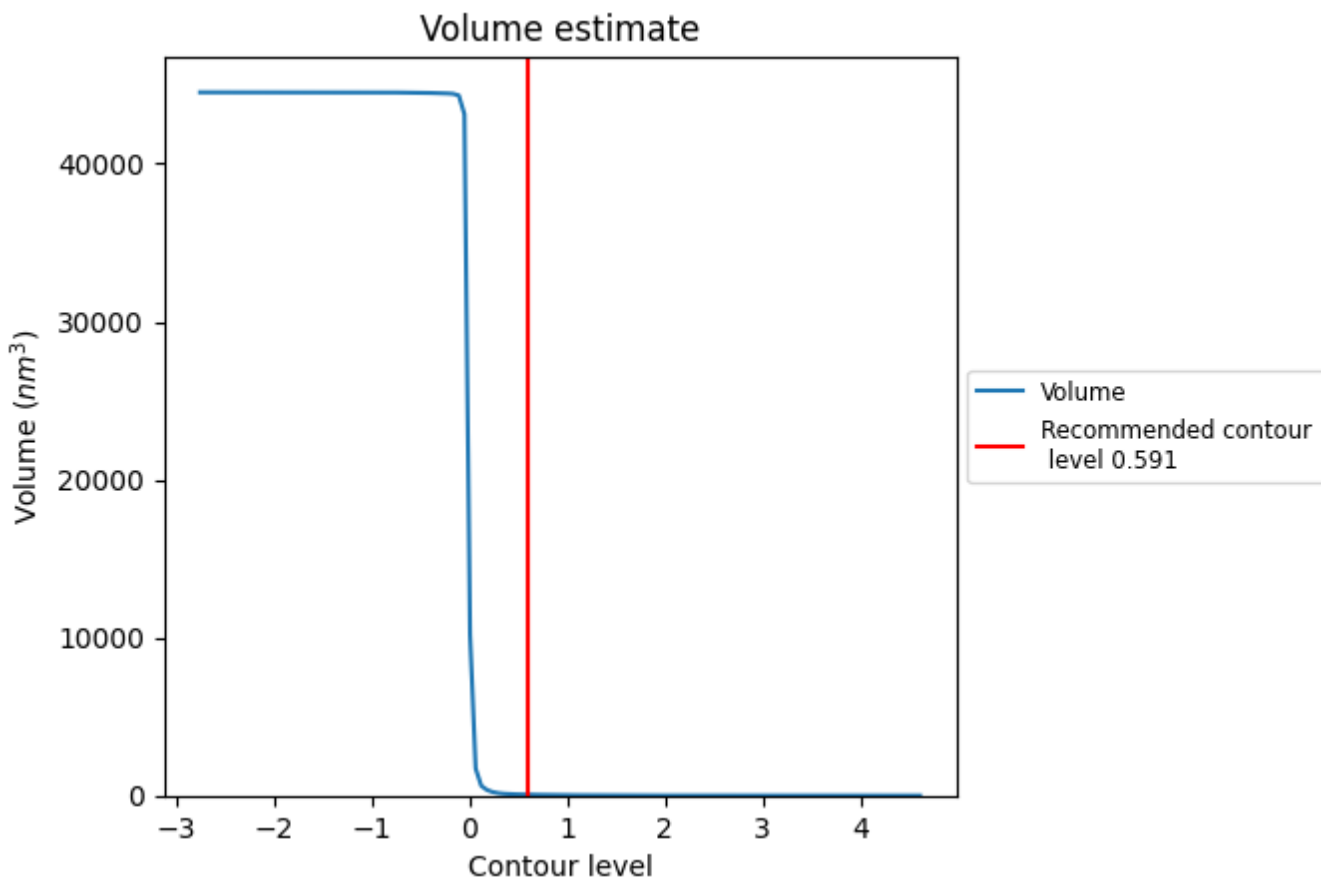
This section contains the results of statistical analysis of the map.

7.1 Map-value distribution [i](#)



The map-value distribution is plotted in 128 intervals along the x-axis. The y-axis is logarithmic. A spike in this graph at zero usually indicates that the volume has been masked.

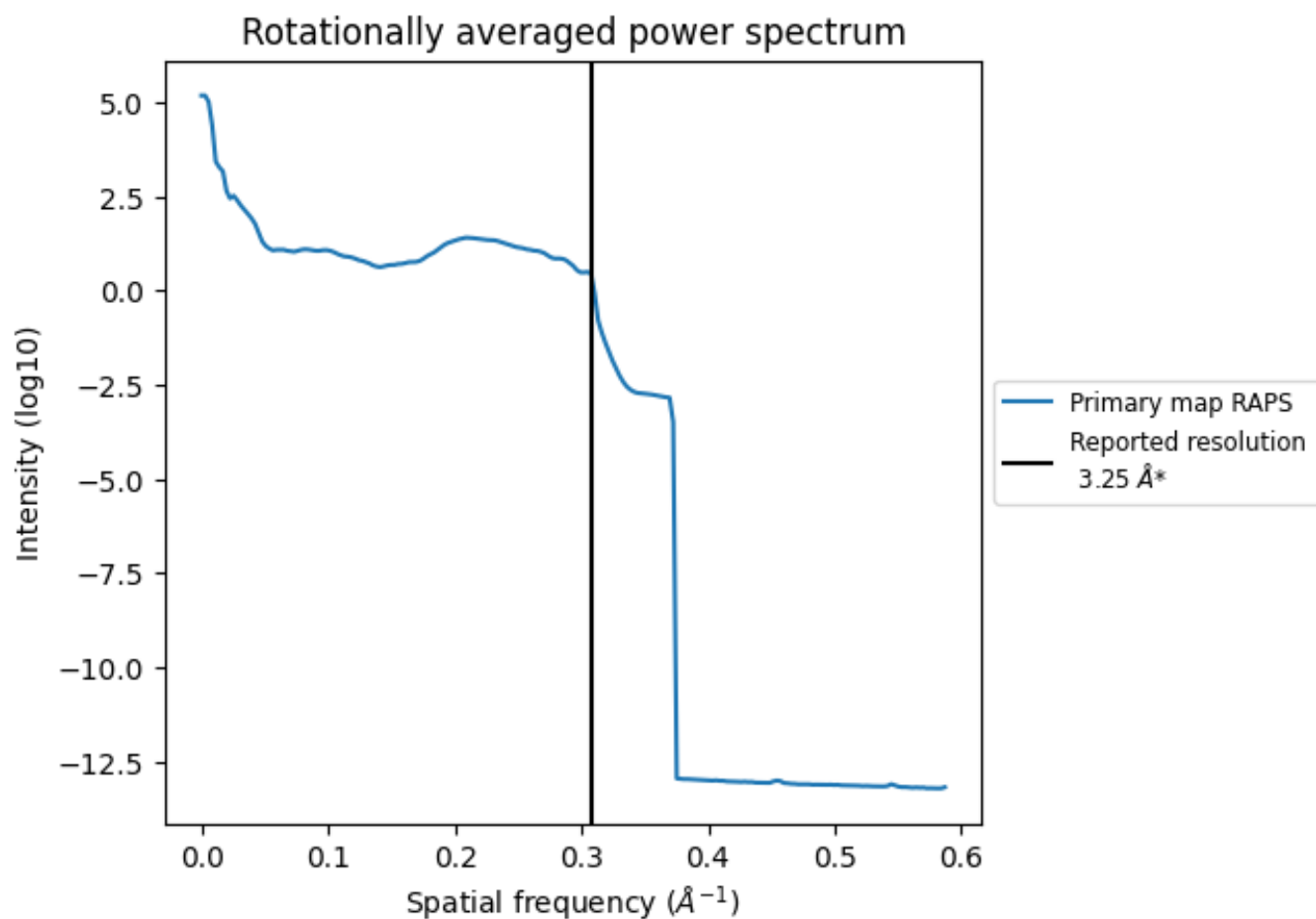
7.2 Volume estimate [i](#)



The volume at the recommended contour level is 59 nm³; this corresponds to an approximate mass of 53 kDa.

The volume estimate graph shows how the enclosed volume varies with the contour level. The recommended contour level is shown as a vertical line and the intersection between the line and the curve gives the volume of the enclosed surface at the given level.

7.3 Rotationally averaged power spectrum [i](#)

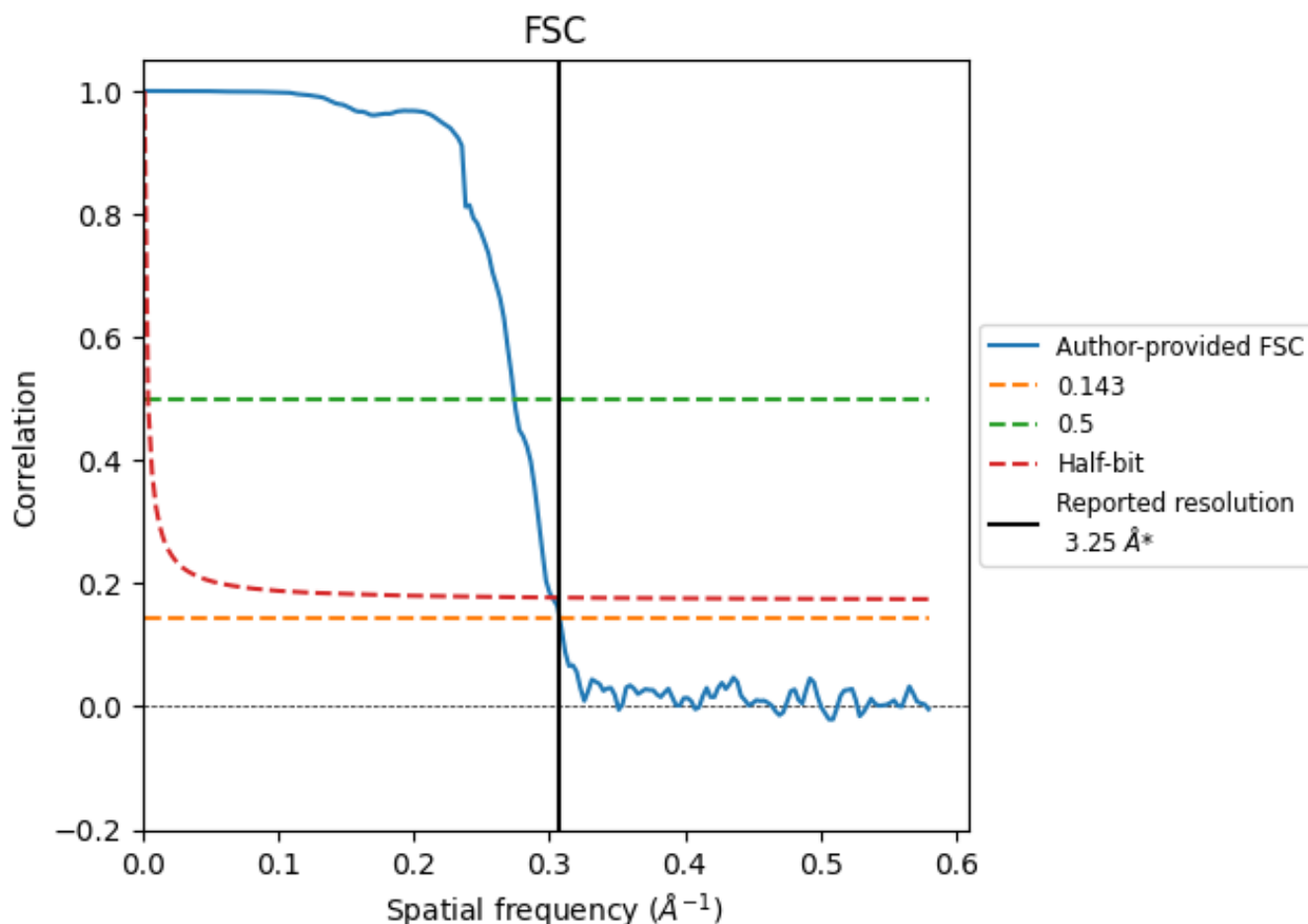


*Reported resolution corresponds to spatial frequency of 0.308 Å⁻¹

8 Fourier-Shell correlation [\(i\)](#)

Fourier-Shell Correlation (FSC) is the most commonly used method to estimate the resolution of single-particle and subtomogram-averaged maps. The shape of the curve depends on the imposed symmetry, mask and whether or not the two 3D reconstructions used were processed from a common reference. The reported resolution is shown as a black line. A curve is displayed for the half-bit criterion in addition to lines showing the 0.143 gold standard cut-off and 0.5 cut-off.

8.1 FSC [\(i\)](#)



*Reported resolution corresponds to spatial frequency of 0.308 Å⁻¹

8.2 Resolution estimates [i](#)

Resolution estimate (Å)	Estimation criterion (FSC cut-off)		
	0.143	0.5	Half-bit
Reported by author	3.25	-	-
Author-provided FSC curve	3.25	3.65	3.31
Unmasked-calculated*	-	-	-

*Resolution estimate based on FSC curve calculated by comparison of deposited half-maps.

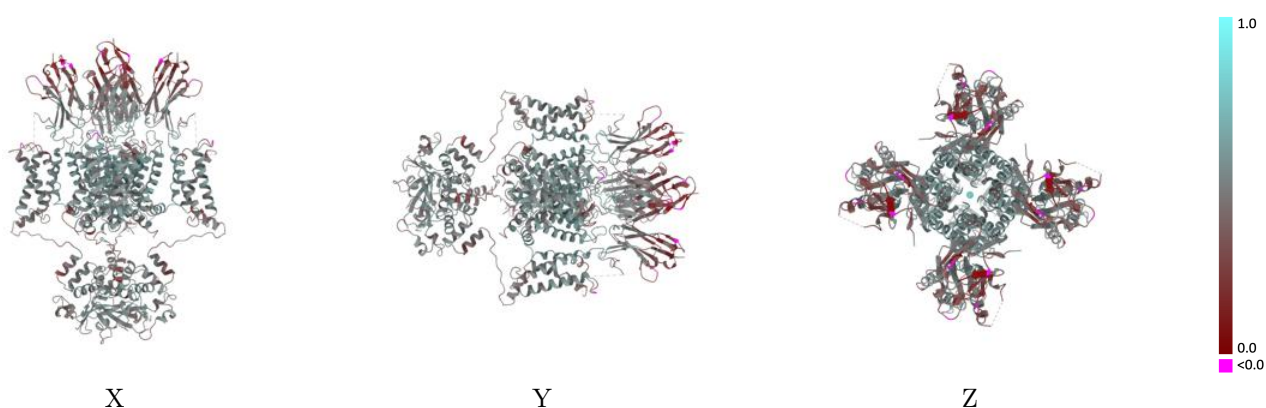
9 Map-model fit [i](#)

This section contains information regarding the fit between EMDB map EMD-25417 and PDB model 8DFL. Per-residue inclusion information can be found in section 3 on page 11.

9.1 Map-model overlay [i](#)

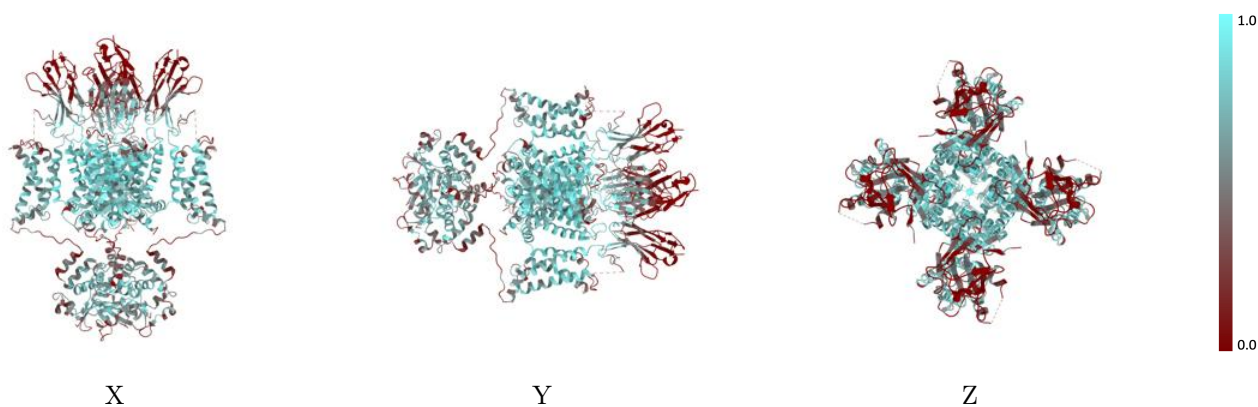
This section was not generated.

9.2 Q-score mapped to coordinate model [i](#)



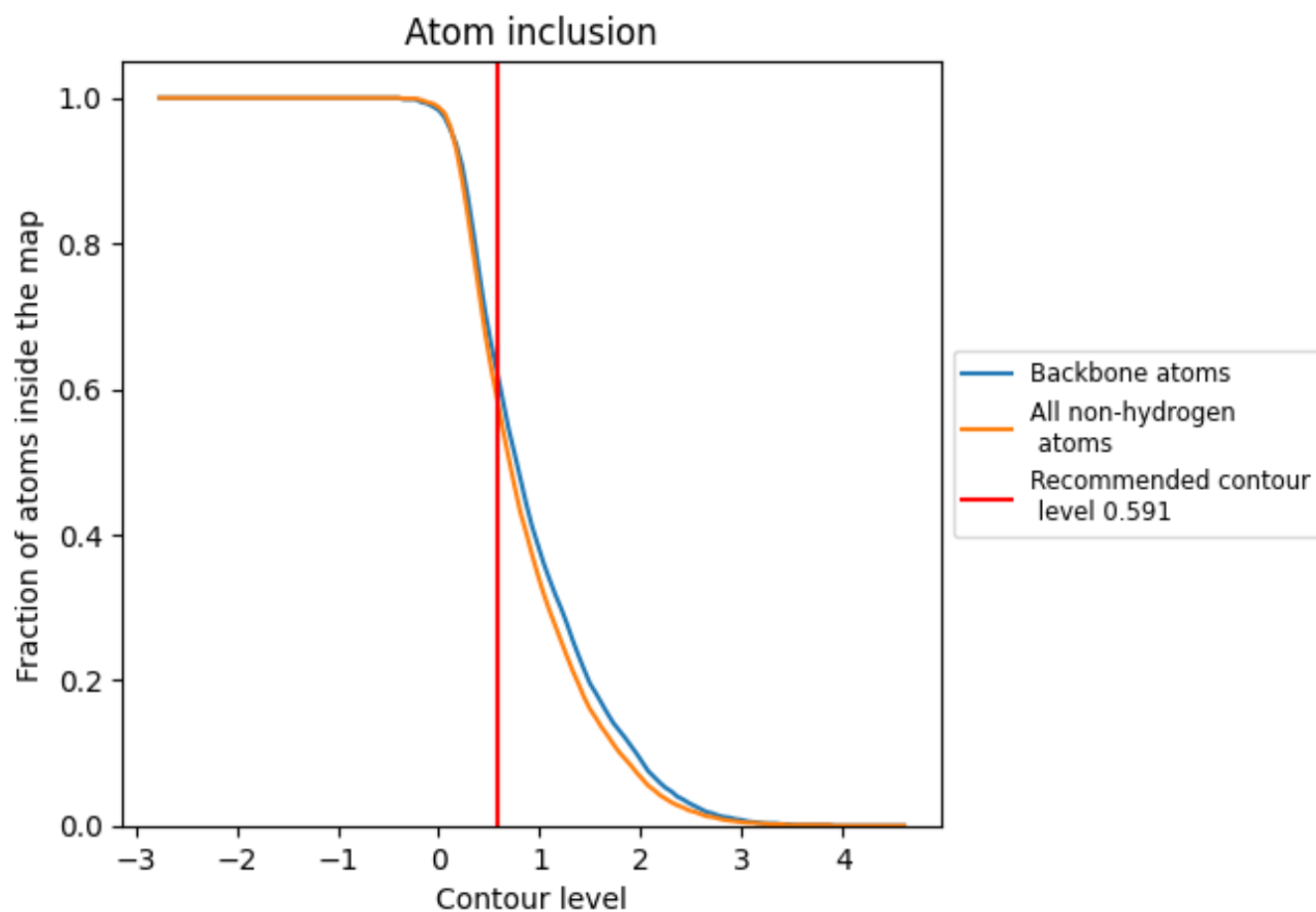
The images above show the model with each residue coloured according to its Q-score. This shows their resolvability in the map with higher Q-score values reflecting better resolvability. Please note: Q-score is calculating the resolvability of atoms, and thus high values are only expected at resolutions at which atoms can be resolved. Low Q-score values may therefore be expected for many entries.

9.3 Atom inclusion mapped to coordinate model [i](#)



The images above show the model with each residue coloured according to its atom inclusion. This shows to what extent they are inside the map at the recommended contour level (0.591).



















9.4 Atom inclusion [i](#)



At the recommended contour level, 62% of all backbone atoms, 58% of all non-hydrogen atoms, are inside the map.

9.5 Map-model fit summary

The table lists the average atom inclusion at the recommended contour level (0.591) and Q-score for the entire model and for each chain.

Chain	Atom inclusion	Q-score
All	 0.5780	 0.4820
A	 0.6610	 0.5090
B	 0.6640	 0.5070
C	 0.6640	 0.5090
D	 0.6640	 0.5090
E	 0.2940	 0.3950
F	 0.2960	 0.3930
G	 0.2980	 0.3930
H	 0.2960	 0.3920

