



# wwPDB X-ray Structure Validation Summary Report ⓘ

Mar 12, 2026 – 01:14 PM UTC

PDB ID : 2DGM / pdb\_00002dgm  
Title : Crystal structure of Escherichia coli GadB in complex with iodide  
Authors : Gruetter, M.G.; Capitani, G.; Gut, H.  
Deposited on : 2006-03-14  
Resolution : 1.95 Å(reported)

This is a wwPDB X-ray Structure Validation Summary Report for a publicly released PDB entry.

We welcome your comments at [validation@mail.wwpdb.org](mailto:validation@mail.wwpdb.org)

A user guide is available at

<https://www.wwpdb.org/validation/2017/XrayValidationReportHelp>

with specific help available everywhere you see the ⓘ symbol.

The types of validation reports are described at

<http://www.wwpdb.org/validation/2017/FAQs#types>.

---

The following versions of software and data (see [references ⓘ](#)) were used in the production of this report:

MolProbity : 4-5-2 with Phenix2.0  
Mogul : 2022.3.0, CSD as543be (2022)  
Xtriage (Phenix) : 2.0  
EDS : 3.0  
Percentile statistics : 20250101.v01 (using entries in the PDB archive January 1st 2025)  
CCP4 : 9.0.010 (Gargrove)  
Density-Fitness : 1.0.12  
Ideal geometry (proteins) : Engh & Huber (2001)  
Ideal geometry (DNA, RNA) : Parkinson et al. (1996)  
Validation Pipeline (wwPDB-VP) : 2.49

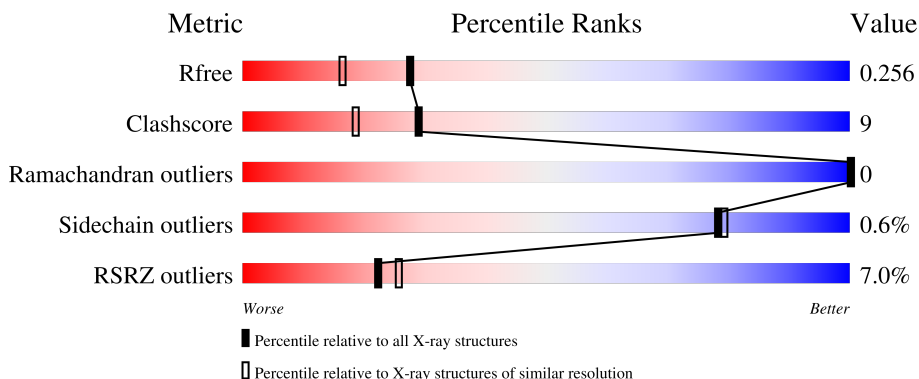
# 1 Overall quality at a glance

The following experimental techniques were used to determine the structure:

*X-RAY DIFFRACTION*

The reported resolution of this entry is 1.95 Å.

Percentile scores (ranging between 0-100) for global validation metrics of the entry are shown in the following graphic. The table shows the number of entries on which the scores are based.



Metric	Whole archive (#Entries)	Similar resolution (#Entries, resolution range(Å))
$R_{free}$	180053	3494 (1.96-1.96)
Clashscore	190562	3612 (1.96-1.96)
Ramachandran outliers	187476	3587 (1.96-1.96)
Sidechain outliers	187428	3587 (1.96-1.96)
RSRZ outliers	180081	3495 (1.96-1.96)

The table below summarises the geometric issues observed across the polymeric chains and their fit to the electron density. The red, orange, yellow and green segments of the lower bar indicate the fraction of residues that contain outliers for  $\geq 3$ , 2, 1 and 0 types of geometric quality criteria respectively. A grey segment represents the fraction of residues that are not modelled. The numeric value for each fraction is indicated below the corresponding segment, with a dot representing fractions  $\leq 5\%$ . The upper red bar (where present) indicates the fraction of residues that have poor fit to the electron density. The numeric value is given above the bar.

Mol	Chain	Length	Quality of chain
1	A	466	
1	B	466	
1	C	466	
1	D	466	
1	E	466	

*Continued on next page...*

*Continued from previous page...*

Mol	Chain	Length	Quality of chain
1	F	466	

The following table lists non-polymeric compounds, carbohydrate monomers and non-standard residues in protein, DNA, RNA chains that are outliers for geometric or electron-density-fit criteria:

Mol	Type	Chain	Res	Chirality	Geometry	Clashes	Electron density
2	IOD	A	2331	-	-	X	-
2	IOD	A	2355	-	-	X	-
2	IOD	B	2333	-	-	X	-
2	IOD	B	2338	-	-	X	-
2	IOD	C	2351	-	-	X	-
2	IOD	D	2352	-	-	X	-
2	IOD	E	2335	-	-	X	-
2	IOD	E	2353	-	-	X	-
2	IOD	F	2336	-	-	X	-

## 2 Entry composition

There are 7 unique types of molecules in this entry. The entry contains 23729 atoms, of which 0 are hydrogens and 0 are deuteriums.

In the tables below, the ZeroOcc column contains the number of atoms modelled with zero occupancy, the AltConf column contains the number of residues with at least one atom in alternate conformation and the Trace column contains the number of residues modelled with at most 2 atoms.

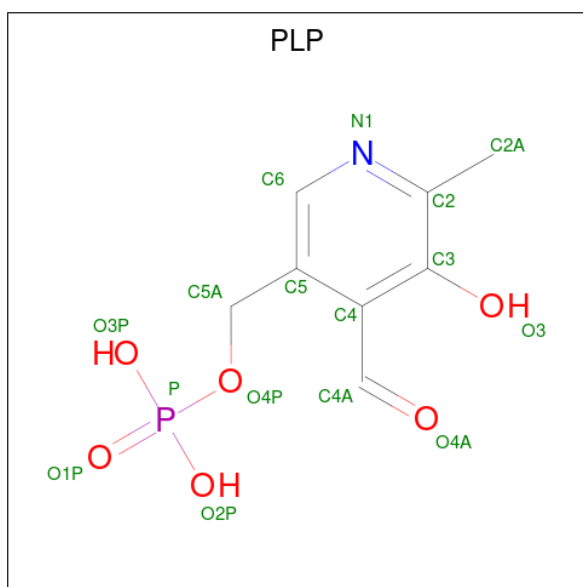
- Molecule 1 is a protein called Glutamate decarboxylase beta.

Mol	Chain	Residues	Atoms					ZeroOcc	AltConf	Trace
			Total	C	N	O	S			
1	A	452	Total 3604	C 2300	N 616	O 663	S 25	0	3	0
1	B	451	Total 3591	C 2292	N 612	O 662	S 25	0	2	0
1	C	454	Total 3614	C 2306	N 616	O 666	S 26	0	3	0
1	D	454	Total 3621	C 2313	N 617	O 666	S 25	0	4	0
1	E	450	Total 3585	C 2288	N 610	O 661	S 26	0	3	0
1	F	454	Total 3619	C 2312	N 617	O 665	S 25	0	2	0

- Molecule 2 is IODIDE ION (CCD ID: IOD) (formula: I).

Mol	Chain	Residues	Atoms	ZeroOcc	AltConf
2	A	6	Total 6 I 6	0	0
2	B	6	Total 6 I 6	0	0
2	C	4	Total 4 I 4	0	0
2	D	6	Total 6 I 6	0	0
2	E	5	Total 5 I 5	0	0
2	F	5	Total 5 I 5	0	0

- Molecule 3 is PYRIDOXAL-5'-PHOSPHATE (CCD ID: PLP) (formula: C<sub>8</sub>H<sub>10</sub>NO<sub>6</sub>P).



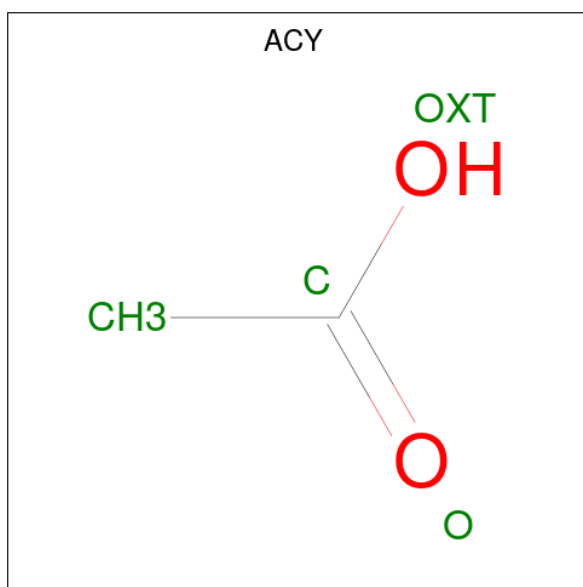
Mol	Chain	Residues	Atoms					ZeroOcc	AltConf
			Total	C	N	O	P		
3	A	1	Total	C	N	O	P	0	0
			15	8	1	5	1		
3	B	1	Total	C	N	O	P	0	0
			15	8	1	5	1		
3	C	1	Total	C	N	O	P	0	0
			15	8	1	5	1		
3	D	1	Total	C	N	O	P	0	0
			15	8	1	5	1		
3	E	1	Total	C	N	O	P	0	0
			15	8	1	5	1		
3	F	1	Total	C	N	O	P	0	0
			15	8	1	5	1		

- Molecule 4 is FORMIC ACID (CCD ID: FMT) (formula: CH<sub>2</sub>O<sub>2</sub>).



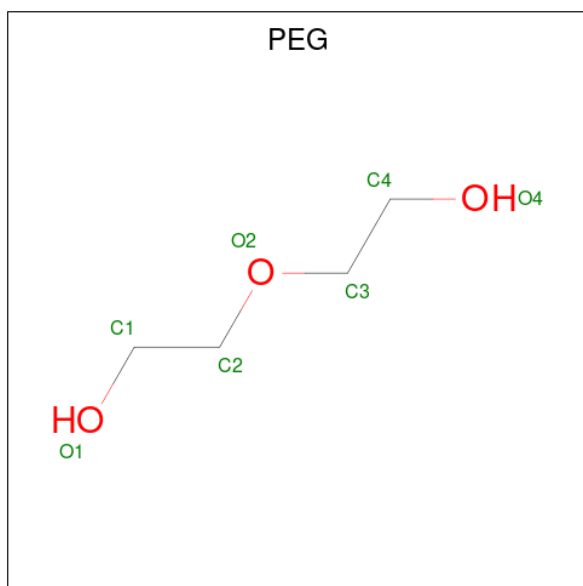
Mol	Chain	Residues	Atoms	ZeroOcc	AltConf
4	A	1	Total C O 3 1 2	0	0
4	A	1	Total C O 3 1 2	0	0
4	A	1	Total C O 3 1 2	0	0
4	B	1	Total C O 3 1 2	0	0
4	C	1	Total C O 3 1 2	0	0
4	D	1	Total C O 3 1 2	0	0
4	D	1	Total C O 3 1 2	0	0
4	D	1	Total C O 3 1 2	0	0
4	E	1	Total C O 3 1 2	0	0
4	F	1	Total C O 3 1 2	0	0
4	F	1	Total C O 3 1 2	0	0
4	F	1	Total C O 3 1 2	0	0
4	F	1	Total C O 3 1 2	0	0

- Molecule 5 is ACETIC ACID (CCD ID: ACY) (formula: C<sub>2</sub>H<sub>4</sub>O<sub>2</sub>).



Mol	Chain	Residues	Atoms			ZeroOcc	AltConf
5	E	1	Total	C	O	0	0
			4	2	2		

- Molecule 6 is DI(HYDROXYETHYL)ETHER (CCD ID: PEG) (formula:  $C_4H_{10}O_3$ ).



Mol	Chain	Residues	Atoms			ZeroOcc	AltConf
6	E	1	Total	C	O	0	0
			7	4	3		

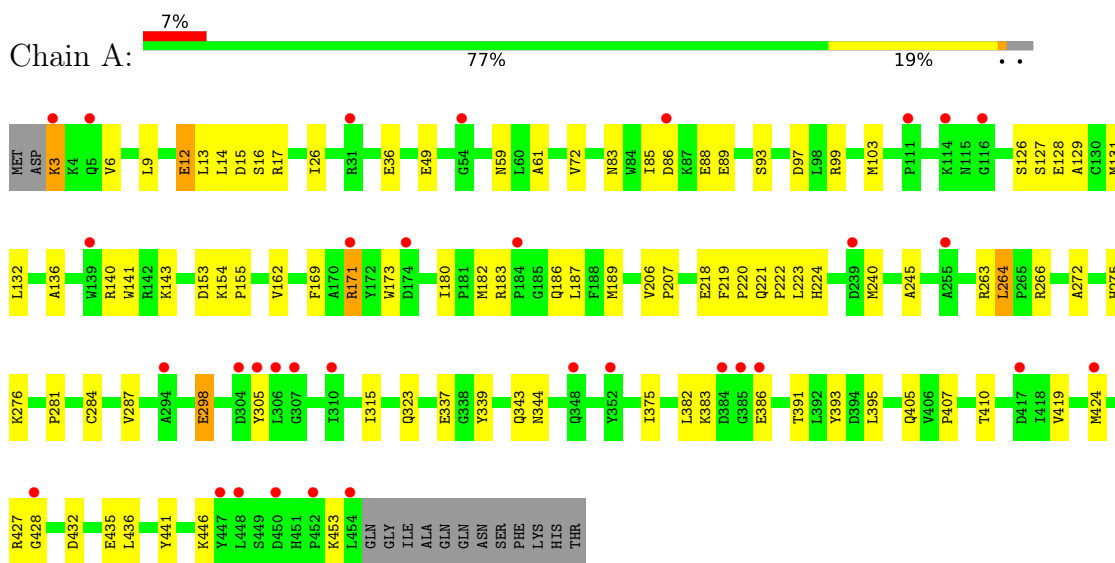
- Molecule 7 is water.

Mol	Chain	Residues	Atoms		ZeroOcc	AltConf
7	A	318	Total 318	O 318	0	0
7	B	339	Total 339	O 339	0	0
7	C	295	Total 295	O 295	0	0
7	D	346	Total 346	O 346	0	0
7	E	299	Total 299	O 299	0	0
7	F	326	Total 326	O 326	0	0

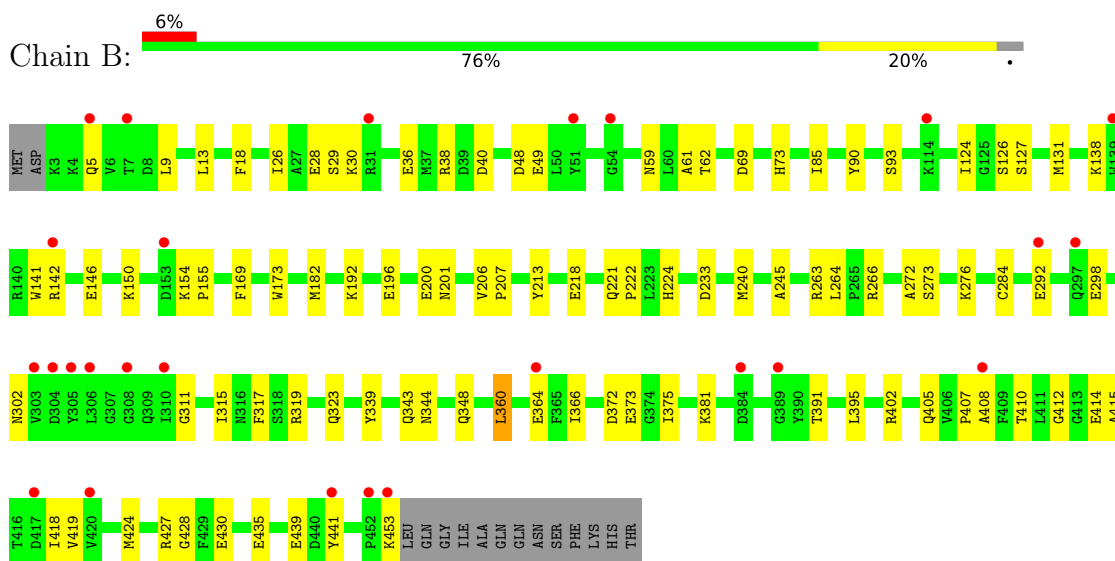
### 3 Residue-property plots [i](#)

These plots are drawn for all protein, RNA, DNA and oligosaccharide chains in the entry. The first graphic for a chain summarises the proportions of the various outlier classes displayed in the second graphic. The second graphic shows the sequence view annotated by issues in geometry and electron density. Residues are color-coded according to the number of geometric quality criteria for which they contain at least one outlier: green = 0, yellow = 1, orange = 2 and red = 3 or more. A red dot above a residue indicates a poor fit to the electron density ( $RSRZ > 2$ ). Stretches of 2 or more consecutive residues without any outlier are shown as a green connector. Residues present in the sample, but not in the model, are shown in grey.

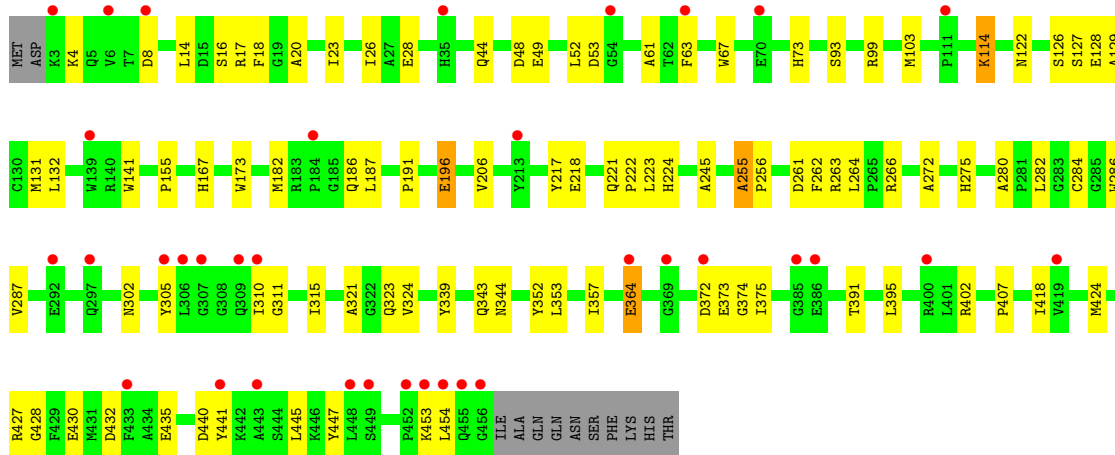
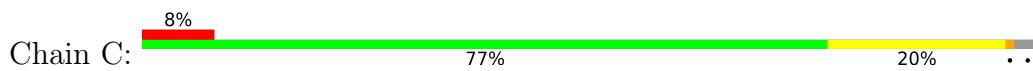
- Molecule 1: Glutamate decarboxylase beta



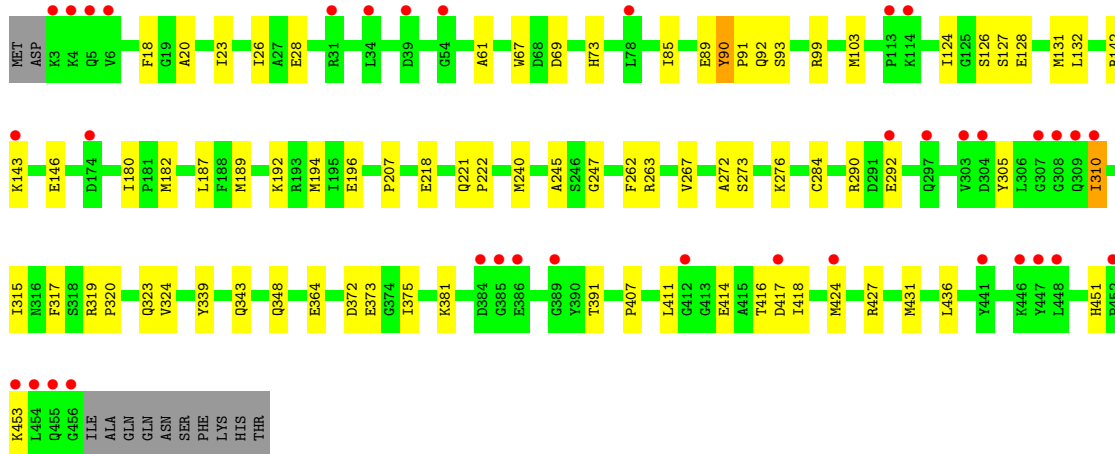
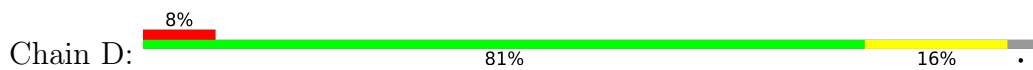
- Molecule 1: Glutamate decarboxylase beta



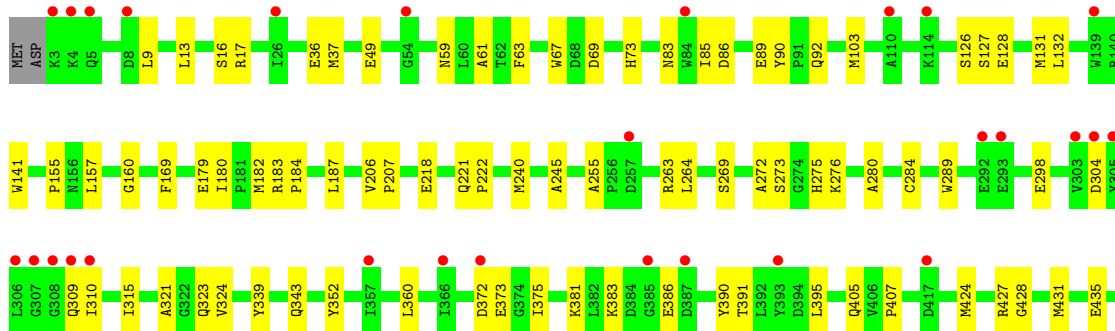
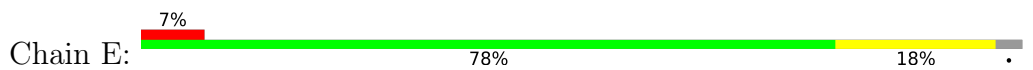
- Molecule 1: Glutamate decarboxylase beta

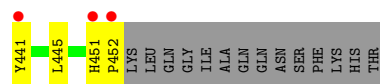


• Molecule 1: Glutamate decarboxylase beta

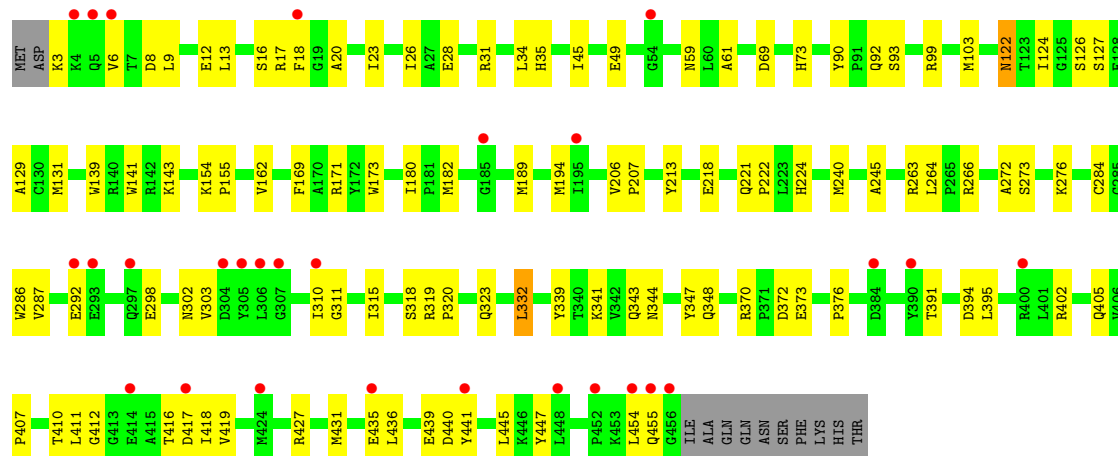
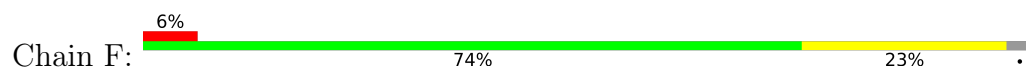


• Molecule 1: Glutamate decarboxylase beta





- Molecule 1: Glutamate decarboxylase beta



## 4 Data and refinement statistics i

Property	Value	Source
Space group	P 1	Depositor
Cell constants a, b, c, $\alpha$ , $\beta$ , $\gamma$	91.34Å 91.80Å 93.91Å 76.65° 76.94° 78.04°	Depositor
Resolution (Å)	40.00 – 1.95 40.00 – 1.95	Depositor EDS
% Data completeness (in resolution range)	92.0 (40.00-1.95) 92.1 (40.00-1.95)	Depositor EDS
$R_{merge}$	(Not available)	Depositor
$R_{sym}$	0.12	Depositor
$\langle I/\sigma(I) \rangle$ <sup>1</sup>	2.78 (at 1.95Å)	Xtriage
Refinement program	CNS 1.1	Depositor
R, $R_{free}$	0.227 , 0.267 0.217 , 0.256	Depositor DCC
$R_{free}$ test set	5338 reflections (2.79%)	wwPDB-VP
Wilson B-factor (Å <sup>2</sup> )	20.5	Xtriage
Anisotropy	0.117	Xtriage
Bulk solvent $k_{sol}$ (e/Å <sup>3</sup> ), $B_{sol}$ (Å <sup>2</sup> )	0.37 , 41.5	EDS
L-test for twinning <sup>2</sup>	$\langle  L  \rangle = 0.50$ , $\langle L^2 \rangle = 0.33$	Xtriage
Estimated twinning fraction	0.156 for k,l,h 0.156 for l,h,k 0.013 for -k,-h,-l 0.002 for -l,-k,-h 0.008 for -h,-l,-k	Xtriage
$F_o, F_c$ correlation	0.93	EDS
Total number of atoms	23729	wwPDB-VP
Average B, all atoms (Å <sup>2</sup> )	20.0	wwPDB-VP

Xtriage's analysis on translational NCS is as follows: *The largest off-origin peak in the Patterson function is 4.78% of the height of the origin peak. No significant pseudotranslation is detected.*

<sup>1</sup>Intensities estimated from amplitudes.

<sup>2</sup>Theoretical values of  $\langle |L| \rangle$ ,  $\langle L^2 \rangle$  for acentric reflections are 0.5, 0.333 respectively for untwinned datasets, and 0.375, 0.2 for perfectly twinned datasets.

## 5 Model quality [i](#)

### 5.1 Standard geometry [i](#)

Bond lengths and bond angles in the following residue types are not validated in this section: ACY, PEG, PLP, FMT, IOD

The Z score for a bond length (or angle) is the number of standard deviations the observed value is removed from the expected value. A bond length (or angle) with  $|Z| > 5$  is considered an outlier worth inspection. RMSZ is the root-mean-square of all Z scores of the bond lengths (or angles).

Mol	Chain	Bond lengths		Bond angles	
		RMSZ	# Z  >5	RMSZ	# Z  >5
1	A	0.39	0/3711	0.91	10/5028 (0.2%)
1	B	0.40	0/3692	0.89	12/5003 (0.2%)
1	C	0.38	0/3721	0.91	10/5041 (0.2%)
1	D	0.40	0/3737	0.90	8/5065 (0.2%)
1	E	0.39	0/3691	0.90	11/5002 (0.2%)
1	F	0.40	0/3723	0.89	11/5046 (0.2%)
All	All	0.39	0/22275	0.90	62/30185 (0.2%)

There are no bond length outliers.

The worst 5 of 62 bond angle outliers are listed below:

Mol	Chain	Res	Type	Atoms	Z	Observed(°)	Ideal(°)
1	E	218	GLU	N-CA-C	-7.97	95.75	108.73
1	A	218	GLU	N-CA-C	-7.64	96.28	108.73
1	D	90	TYR	CA-C-N	7.60	127.98	119.32
1	D	90	TYR	C-N-CA	7.60	127.98	119.32
1	C	218	GLU	N-CA-C	-7.34	96.77	108.73

There are no chirality outliers.

There are no planarity outliers.

### 5.2 Too-close contacts [i](#)

In the following table, the Non-H and H(model) columns list the number of non-hydrogen atoms and hydrogen atoms in the chain respectively. The H(added) column lists the number of hydrogen atoms added and optimized by MolProbity. The Clashes column lists the number of clashes within the asymmetric unit, whereas Symm-Clashes lists symmetry-related clashes.

Mol	Chain	Non-H	H(model)	H(added)	Clashes	Symm-Clashes
1	A	3604	0	3518	74	0
1	B	3591	0	3502	71	0
1	C	3614	0	3529	68	0
1	D	3621	0	3529	56	0
1	E	3585	0	3494	61	0
1	F	3619	0	3529	92	0
2	A	6	0	0	5	0
2	B	6	0	0	7	0
2	C	4	0	0	4	0
2	D	6	0	0	5	0
2	E	5	0	0	6	0
2	F	5	0	0	5	0
3	A	15	0	6	2	0
3	B	15	0	6	1	0
3	C	15	0	6	1	0
3	D	15	0	6	1	0
3	E	15	0	6	1	0
3	F	15	0	6	1	0
4	A	9	0	3	1	0
4	B	3	0	1	0	0
4	C	3	0	1	0	0
4	D	9	0	3	0	0
4	E	3	0	1	0	0
4	F	12	0	4	0	0
5	E	4	0	3	1	0
6	E	7	0	10	0	0
7	A	318	0	0	2	0
7	B	339	0	0	2	0
7	C	295	0	0	0	0
7	D	346	0	0	3	0
7	E	299	0	0	0	0
7	F	326	0	0	3	0
All	All	23729	0	21163	375	0

The all-atom clashscore is defined as the number of clashes found per 1000 atoms (including hydrogen atoms). The all-atom clashscore for this structure is 9.

The worst 5 of 375 close contacts within the same asymmetric unit are listed below, sorted by their clash magnitude.

Atom-1	Atom-2	Interatomic distance (Å)	Clash overlap (Å)
1:C:114:LYS:H	1:C:114:LYS:HD3	1.19	1.02
1:A:453:LYS:HB2	2:A:2343:IOD:I	2.36	0.95

*Continued on next page...*

Continued from previous page...

Atom-1	Atom-2	Interatomic distance (Å)	Clash overlap (Å)
1:E:431:MET:HE3	1:E:431:MET:HA	1.57	0.86
1:A:171:ARG:HH11	1:A:171:ARG:HB2	1.43	0.83
1:D:348:GLN:HE21	1:D:431:MET:HE2	1.45	0.80

There are no symmetry-related clashes.

## 5.3 Torsion angles [i](#)

### 5.3.1 Protein backbone [i](#)

In the following table, the Percentiles column shows the percent Ramachandran outliers of the chain as a percentile score with respect to all X-ray entries followed by that with respect to entries of similar resolution.

The Analysed column shows the number of residues for which the backbone conformation was analysed, and the total number of residues.

Mol	Chain	Analysed	Favoured	Allowed	Outliers	Percentiles	
1	A	453/466 (97%)	444 (98%)	9 (2%)	0	100	100
1	B	451/466 (97%)	437 (97%)	14 (3%)	0	100	100
1	C	455/466 (98%)	441 (97%)	14 (3%)	0	100	100
1	D	456/466 (98%)	443 (97%)	13 (3%)	0	100	100
1	E	451/466 (97%)	437 (97%)	14 (3%)	0	100	100
1	F	454/466 (97%)	441 (97%)	13 (3%)	0	100	100
All	All	2720/2796 (97%)	2643 (97%)	77 (3%)	0	100	100

There are no Ramachandran outliers to report.

### 5.3.2 Protein sidechains [i](#)

In the following table, the Percentiles column shows the percent sidechain outliers of the chain as a percentile score with respect to all X-ray entries followed by that with respect to entries of similar resolution.

The Analysed column shows the number of residues for which the sidechain conformation was analysed, and the total number of residues.

Mol	Chain	Analysed	Rotameric	Outliers	Percentiles	
1	A	381/390 (98%)	376 (99%)	5 (1%)	61	58
1	B	379/390 (97%)	378 (100%)	1 (0%)	86	87
1	C	382/390 (98%)	379 (99%)	3 (1%)	73	74
1	D	383/390 (98%)	380 (99%)	3 (1%)	73	74
1	E	379/390 (97%)	378 (100%)	1 (0%)	86	87
1	F	381/390 (98%)	379 (100%)	2 (0%)	81	82
All	All	2285/2340 (98%)	2270 (99%)	15 (1%)	78	76

5 of 15 residues with a non-rotameric sidechain are listed below:

Mol	Chain	Res	Type
1	C	196	GLU
1	F	332	LEU
1	C	364	GLU
1	F	417	ASP
1	D	414	GLU

Sometimes sidechains can be flipped to improve hydrogen bonding and reduce clashes. 5 of 27 such sidechains are listed below:

Mol	Chain	Res	Type
1	C	344	ASN
1	D	221	GLN
1	F	302	ASN
1	D	201	ASN
1	D	348	GLN

### 5.3.3 RNA [i](#)

There are no RNA molecules in this entry.

## 5.4 Non-standard residues in protein, DNA, RNA chains [i](#)

There are no non-standard protein/DNA/RNA residues in this entry.

## 5.5 Carbohydrates [i](#)

There are no oligosaccharides in this entry.

## 5.6 Ligand geometry

Of 53 ligands modelled in this entry, 32 are monoatomic - leaving 21 for Mogul analysis.

In the following table, the Counts columns list the number of bonds (or angles) for which Mogul statistics could be retrieved, the number of bonds (or angles) that are observed in the model and the number of bonds (or angles) that are defined in the Chemical Component Dictionary. The Link column lists molecule types, if any, to which the group is linked. The Z score for a bond length (or angle) is the number of standard deviations the observed value is removed from the expected value. A bond length (or angle) with  $|Z| > 2$  is considered an outlier worth inspection. RMSZ is the root-mean-square of all Z scores of the bond lengths (or angles).

Mol	Type	Chain	Res	Link	Bond lengths			Bond angles		
					Counts	RMSZ	# Z  > 2	Counts	RMSZ	# Z  > 2
4	FMT	F	2590	-	2,2,2	0.62	0	1,1,1	0.04	0
4	FMT	F	2670	-	2,2,2	0.63	0	1,1,1	0.04	0
4	FMT	F	2660	-	2,2,2	0.63	0	1,1,1	0.05	0
6	PEG	E	2833	-	6,6,6	0.53	0	5,5,5	0.47	0
5	ACY	E	2519	-	3,3,3	1.28	0	3,3,3	1.64	1 (33%)
3	PLP	A	500	1	15,15,16	0.92	0	21,22,23	1.48	6 (28%)
4	FMT	E	2620	-	2,2,2	0.63	0	1,1,1	0.08	0
3	PLP	B	500	1	15,15,16	0.85	0	21,22,23	1.45	5 (23%)
4	FMT	D	2630	-	2,2,2	0.63	0	1,1,1	0.07	0
4	FMT	B	2650	-	2,2,2	0.63	0	1,1,1	0.07	0
3	PLP	C	501	1	15,15,16	0.90	1 (6%)	21,22,23	1.51	6 (28%)
3	PLP	E	502	1	15,15,16	0.94	0	21,22,23	1.49	6 (28%)
3	PLP	F	502	1	15,15,16	0.84	0	21,22,23	1.47	5 (23%)
4	FMT	C	2610	-	2,2,2	0.62	0	1,1,1	0.06	0
4	FMT	F	2640	-	2,2,2	0.62	0	1,1,1	0.06	0
3	PLP	D	501	1	15,15,16	0.92	0	21,22,23	1.49	6 (28%)
4	FMT	D	2580	-	2,2,2	0.62	0	1,1,1	0.04	0
4	FMT	D	2570	-	2,2,2	0.63	0	1,1,1	0.05	0
4	FMT	A	2550	-	2,2,2	0.63	0	1,1,1	0.04	0
4	FMT	A	2560	-	2,2,2	0.62	0	1,1,1	0.04	0
4	FMT	A	2600	-	2,2,2	0.63	0	1,1,1	0.06	0

In the following table, the Chirals column lists the number of chiral outliers, the number of chiral centers analysed, the number of these observed in the model and the number defined in the Chemical Component Dictionary. Similar counts are reported in the Torsion and Rings columns. '-' means no outliers of that kind were identified.

Mol	Type	Chain	Res	Link	Chirals	Torsions	Rings
3	PLP	C	501	1	-	0/6/6/8	0/1/1/1
3	PLP	E	502	1	-	0/6/6/8	0/1/1/1

*Continued on next page...*

*Continued from previous page...*

Mol	Type	Chain	Res	Link	Chirals	Torsions	Rings
3	PLP	A	500	1	-	0/6/6/8	0/1/1/1
3	PLP	F	502	1	-	0/6/6/8	0/1/1/1
3	PLP	B	500	1	-	0/6/6/8	0/1/1/1
6	PEG	E	2833	-	-	0/4/4/4	-
3	PLP	D	501	1	-	0/6/6/8	0/1/1/1

All (1) bond length outliers are listed below:

Mol	Chain	Res	Type	Atoms	Z	Observed(Å)	Ideal(Å)
3	C	501	PLP	C5-C4	2.12	1.42	1.40

The worst 5 of 35 bond angle outliers are listed below:

Mol	Chain	Res	Type	Atoms	Z	Observed(°)	Ideal(°)
3	C	501	PLP	C4A-C4-C5	3.18	124.21	120.94
3	E	502	PLP	C4A-C4-C5	3.03	124.07	120.94
3	A	500	PLP	C4A-C4-C5	2.98	124.02	120.94
3	D	501	PLP	C4A-C4-C5	2.89	123.92	120.94
3	F	502	PLP	C4A-C4-C5	2.84	123.86	120.94

There are no chirality outliers.

There are no torsion outliers.

There are no ring outliers.

8 monomers are involved in 9 short contacts:

Mol	Chain	Res	Type	Clashes	Symm-Clashes
5	E	2519	ACY	1	0
3	A	500	PLP	2	0
3	B	500	PLP	1	0
3	C	501	PLP	1	0
3	E	502	PLP	1	0
3	F	502	PLP	1	0
3	D	501	PLP	1	0
4	A	2550	FMT	1	0

## 5.7 Other polymers [\(i\)](#)

There are no such residues in this entry.

## 5.8 Polymer linkage issues

There are no chain breaks in this entry.

## 6 Fit of model and data [i](#)

### 6.1 Protein, DNA and RNA chains [i](#)

In the following table, the column labelled ‘#RSRZ> 2’ contains the number (and percentage) of RSRZ outliers, followed by percent RSRZ outliers for the chain as percentile scores relative to all X-ray entries and entries of similar resolution. The OWAB column contains the minimum, median, 95<sup>th</sup> percentile and maximum values of the occupancy-weighted average B-factor per residue. The column labelled ‘Q< 0.9’ lists the number of (and percentage) of residues with an average occupancy less than 0.9.

Mol	Chain	Analysed	<RSRZ>	#RSRZ>2	OWAB(Å <sup>2</sup> )	Q<0.9
1	A	452/466 (96%)	0.79	33 (7%) 21 24	9, 18, 29, 43	3 (0%)
1	B	451/466 (96%)	0.74	26 (5%) 29 33	9, 18, 30, 42	2 (0%)
1	C	454/466 (97%)	0.86	35 (7%) 19 22	11, 19, 31, 48	3 (0%)
1	D	454/466 (97%)	0.82	37 (8%) 18 21	9, 18, 30, 46	4 (0%)
1	E	450/466 (96%)	0.79	31 (6%) 23 26	9, 18, 29, 40	3 (0%)
1	F	454/466 (97%)	0.81	28 (6%) 26 31	9, 18, 30, 45	2 (0%)
All	All	2715/2796 (97%)	0.80	190 (6%) 22 26	9, 18, 30, 48	17 (0%)

The worst 5 of 190 RSRZ outliers are listed below:

Mol	Chain	Res	Type	RSRZ
1	C	454	LEU	5.2
1	A	454	LEU	5.1
1	C	54	GLY	4.6
1	D	441	TYR	4.4
1	D	114	LYS	4.4

### 6.2 Non-standard residues in protein, DNA, RNA chains [i](#)

There are no non-standard protein/DNA/RNA residues in this entry.

### 6.3 Carbohydrates [i](#)

There are no oligosaccharides in this entry.

## 6.4 Ligands [i](#)

In the following table, the Atoms column lists the number of modelled atoms in the group and the number defined in the chemical component dictionary. The B-factors column lists the minimum, median, 95<sup>th</sup> percentile and maximum values of B factors of atoms in the group. The column labelled 'Q< 0.9' lists the number of atoms with occupancy less than 0.9.

Mol	Type	Chain	Res	Atoms	RSCC	RSR	B-factors(Å <sup>2</sup> )	Q<0.9
6	PEG	E	2833	7/7	0.72	0.21	44,45,45,45	0
4	FMT	A	2560	3/3	0.76	0.22	31,31,31,31	0
4	FMT	D	2580	3/3	0.80	0.13	29,29,29,29	0
4	FMT	F	2670	3/3	0.82	0.12	27,27,28,28	0
4	FMT	B	2650	3/3	0.84	0.14	30,30,30,31	0
4	FMT	F	2660	3/3	0.84	0.14	30,30,30,30	0
5	ACY	E	2519	4/4	0.85	0.15	33,33,33,33	0
4	FMT	A	2600	3/3	0.87	0.11	28,28,28,28	0
2	IOD	A	2349	1/1	0.88	0.19	97,97,97,97	1
2	IOD	E	2353	1/1	0.88	0.18	50,50,50,50	1
4	FMT	D	2630	3/3	0.88	0.13	29,29,30,30	0
4	FMT	F	2590	3/3	0.88	0.12	33,33,33,33	0
4	FMT	E	2620	3/3	0.89	0.10	23,23,24,24	0
2	IOD	C	2351	1/1	0.90	0.17	53,53,53,53	1
4	FMT	D	2570	3/3	0.91	0.10	28,28,28,28	0
4	FMT	F	2640	3/3	0.91	0.09	29,29,29,30	0
3	PLP	D	501	15/16	0.92	0.09	15,15,16,16	0
2	IOD	B	2350	1/1	0.93	0.23	78,78,78,78	1
3	PLP	A	500	15/16	0.93	0.10	17,18,18,18	0
2	IOD	B	2356	1/1	0.94	0.12	53,53,53,53	1
4	FMT	C	2610	3/3	0.94	0.07	23,23,23,23	0
2	IOD	E	2359	1/1	0.94	0.10	49,49,49,49	1
2	IOD	F	2354	1/1	0.94	0.16	90,90,90,90	1
2	IOD	F	2360	1/1	0.94	0.14	43,43,43,43	1
2	IOD	C	2339	1/1	0.94	0.07	38,38,38,38	1
3	PLP	B	500	15/16	0.94	0.08	16,16,16,16	0
2	IOD	A	2361	1/1	0.94	0.09	39,39,39,39	1
3	PLP	F	502	15/16	0.94	0.08	16,16,17,17	0
4	FMT	A	2550	3/3	0.94	0.07	26,26,26,27	0
2	IOD	D	2352	1/1	0.94	0.20	76,76,76,76	1
2	IOD	D	2362	1/1	0.94	0.08	49,49,49,49	1
2	IOD	A	2337	1/1	0.95	0.06	36,36,36,36	1
2	IOD	E	2347	1/1	0.95	0.07	50,50,50,50	1
3	PLP	C	501	15/16	0.95	0.09	16,17,17,18	0
2	IOD	D	2358	1/1	0.95	0.10	45,45,45,45	1
2	IOD	C	2345	1/1	0.96	0.06	45,45,45,45	1
2	IOD	B	2338	1/1	0.96	0.06	35,35,35,35	1

*Continued on next page...*

*Continued from previous page...*

Mol	Type	Chain	Res	Atoms	RSCC	RSR	B-factors( $\text{\AA}^2$ )	Q<0.9
2	IOD	C	2357	1/1	0.96	0.10	54,54,54,54	1
3	PLP	E	502	15/16	0.96	0.07	16,16,17,17	0
2	IOD	A	2355	1/1	0.96	0.12	48,48,48,48	1
2	IOD	F	2342	1/1	0.97	0.05	34,34,34,34	1
2	IOD	F	2348	1/1	0.97	0.05	42,42,42,42	1
2	IOD	D	2346	1/1	0.97	0.04	41,41,41,41	1
2	IOD	D	2340	1/1	0.97	0.05	30,30,30,30	1
2	IOD	E	2341	1/1	0.97	0.05	37,37,37,37	1
2	IOD	B	2344	1/1	0.98	0.06	39,39,39,39	1
2	IOD	B	2332	1/1	0.99	0.02	24,24,24,24	0
2	IOD	B	2333	1/1	0.99	0.02	22,22,22,22	0
2	IOD	A	2343	1/1	0.99	0.05	47,47,47,47	1
2	IOD	E	2335	1/1	0.99	0.02	20,20,20,20	1
2	IOD	F	2336	1/1	0.99	0.02	25,25,25,25	0
2	IOD	A	2331	1/1	1.00	0.01	20,20,20,20	0
2	IOD	D	2334	1/1	1.00	0.02	24,24,24,24	0

## 6.5 Other polymers [i](#)

There are no such residues in this entry.