



Full wwPDB X-ray Structure Validation Report ⓘ

Mar 9, 2026 – 07:00 PM UTC

PDB ID : 2DKC / pdb_00002dkc
Title : Crystal structure of N-acetylglucosamine-phosphate mutase, a member of the alpha-D-phosphohexomutase superfamily, in the substrate complex
Authors : Nishitani, Y.; Maruyama, D.; Nonaka, T.; Kita, A.; Fukami, T.A.; Mio, T.; Yamada-Okabe, H.; Yamada-Okabe, T.; Miki, K.
Deposited on : 2006-04-07
Resolution : 2.20 Å(reported)

This is a Full wwPDB X-ray Structure Validation Report for a publicly released PDB entry.

We welcome your comments at validation@mail.wwpdb.org

A user guide is available at

<https://www.wwpdb.org/validation/2017/XrayValidationReportHelp>

with specific help available everywhere you see the ⓘ symbol.

The types of validation reports are described at

<http://www.wwpdb.org/validation/2017/FAQs#types>.

The following versions of software and data (see [references ⓘ](#)) were used in the production of this report:

MolProbity : 4-5-2 with Phenix2.0
Mogul : 2022.3.0, CSD as543be (2022)
Xtriage (Phenix) : 2.0
EDS : 3.0
Buster-report : wwPDB partial adaption of 1.1.7 (2018)
Percentile statistics : 20250101.v01 (using entries in the PDB archive January 1st 2025)
CCP4 : 9.0.010 (Gargrove)
Density-Fitness : 1.0.12
Ideal geometry (proteins) : Engh & Huber (2001)
Ideal geometry (DNA, RNA) : Parkinson et al. (1996)
Validation Pipeline (wwPDB-VP) : 2.49

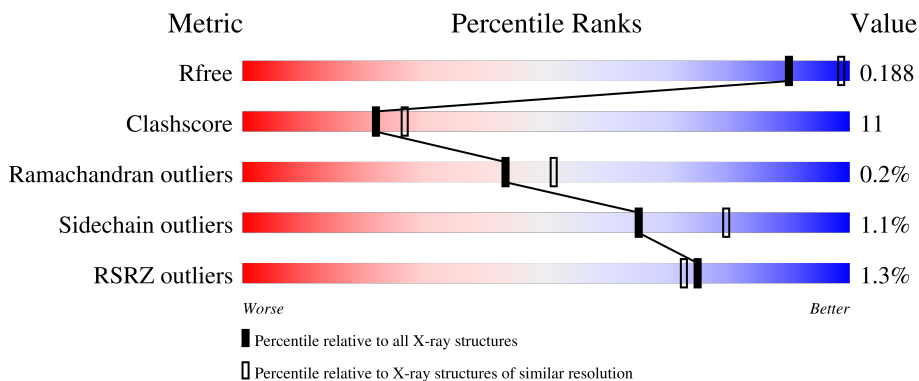
1 Overall quality at a glance

The following experimental techniques were used to determine the structure:

X-RAY DIFFRACTION


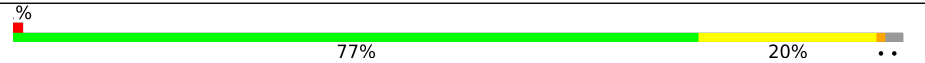
The reported resolution of this entry is 2.20 Å.

Percentile scores (ranging between 0-100) for global validation metrics of the entry are shown in the following graphic. The table shows the number of entries on which the scores are based.



Metric	Whole archive (#Entries)	Similar resolution (#Entries, resolution range(Å))
R_{free}	180053	6164 (2.20-2.20)
Clashscore	190562	6851 (2.20-2.20)
Ramachandran outliers	187476	6768 (2.20-2.20)
Sidechain outliers	187428	6769 (2.20-2.20)
RSRZ outliers	180081	6166 (2.20-2.20)

The table below summarises the geometric issues observed across the polymeric chains and their fit to the electron density. The red, orange, yellow and green segments of the lower bar indicate the fraction of residues that contain outliers for ≥ 3 , 2, 1 and 0 types of geometric quality criteria respectively. A grey segment represents the fraction of residues that are not modelled. The numeric value for each fraction is indicated below the corresponding segment, with a dot representing fractions $\leq 5\%$. The upper red bar (where present) indicates the fraction of residues that have poor fit to the electron density. The numeric value is given above the bar.

Mol	Chain	Length	Quality of chain
1	A	544	 77% 20% ..
1	B	544	 77% 20% ..

2 Entry composition [i](#)

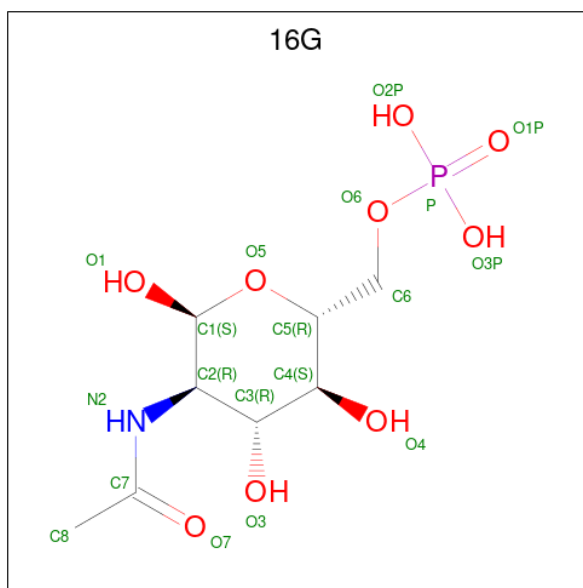
There are 5 unique types of molecules in this entry. The entry contains 9058 atoms, of which 0 are hydrogens and 0 are deuteriums.

In the tables below, the ZeroOcc column contains the number of atoms modelled with zero occupancy, the AltConf column contains the number of residues with at least one atom in alternate conformation and the Trace column contains the number of residues modelled with at most 2 atoms.

- Molecule 1 is a protein called Phosphoacetylglucosamine mutase.

Mol	Chain	Residues	Atoms					ZeroOcc	AltConf	Trace
			Total	C	N	O	S			
1	A	536	Total 4181	C 2661	N 691	O 821	S 8	0	0	0
1	B	535	Total 4180	C 2660	N 690	O 822	S 8	0	0	0

- Molecule 2 is 2-acetamido-2-deoxy-6-O-phosphono-alpha-D-glucopyranose (CCD ID: 16G) (formula: C₈H₁₆NO₉P).



Mol	Chain	Residues	Atoms					ZeroOcc	AltConf
			Total	C	N	O	P		
2	A	1	Total 19	C 8	N 1	O 9	P 1	0	0
2	B	1	Total 19	C 8	N 1	O 9	P 1	0	0

- Molecule 3 is PHOSPHATE ION (CCD ID: PO4) (formula: O₄P).



Mol	Chain	Residues	Atoms	ZeroOcc	AltConf
3	A	1	Total O P 5 4 1	0	0
3	B	1	Total O P 5 4 1	0	0

- Molecule 4 is ZINC ION (CCD ID: ZN) (formula: Zn).

Mol	Chain	Residues	Atoms	ZeroOcc	AltConf
4	A	1	Total Zn 1 1	0	0
4	B	1	Total Zn 1 1	0	0

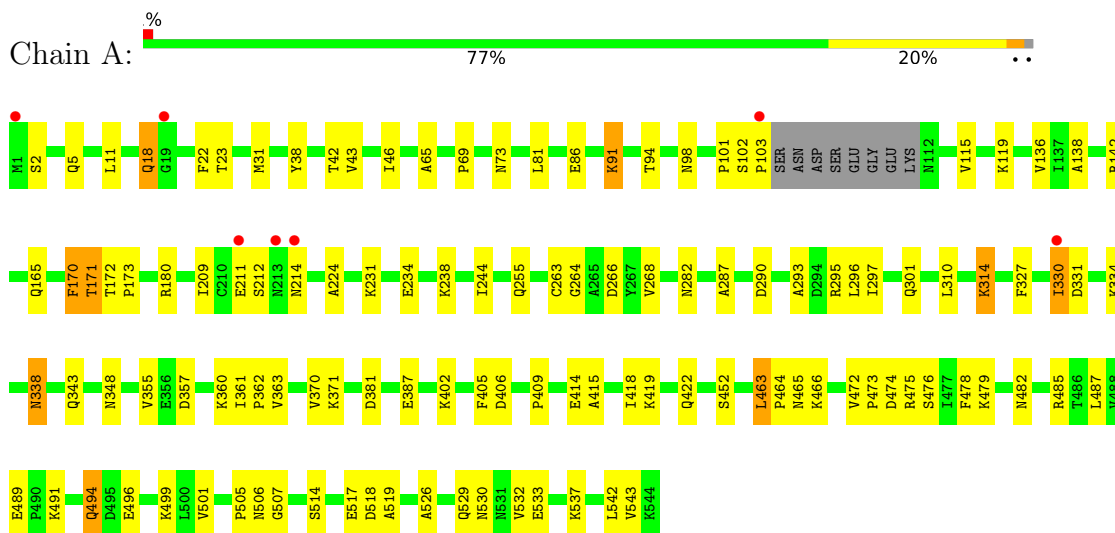
- Molecule 5 is water.

Mol	Chain	Residues	Atoms	ZeroOcc	AltConf
5	A	347	Total O 347 347	0	0
5	B	300	Total O 300 300	0	0

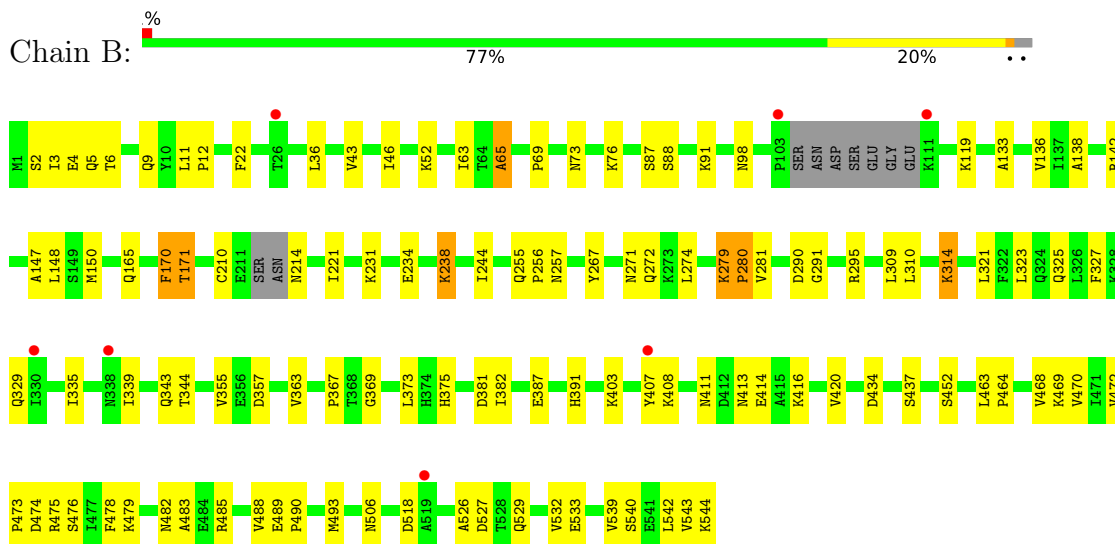
3 Residue-property plots

These plots are drawn for all protein, RNA, DNA and oligosaccharide chains in the entry. The first graphic for a chain summarises the proportions of the various outlier classes displayed in the second graphic. The second graphic shows the sequence view annotated by issues in geometry and electron density. Residues are color-coded according to the number of geometric quality criteria for which they contain at least one outlier: green = 0, yellow = 1, orange = 2 and red = 3 or more. A red dot above a residue indicates a poor fit to the electron density ($RSRZ > 2$). Stretches of 2 or more consecutive residues without any outlier are shown as a green connector. Residues present in the sample, but not in the model, are shown in grey.

- Molecule 1: Phosphoacetylglucosamine mutase



- Molecule 1: Phosphoacetylglucosamine mutase



4 Data and refinement statistics

Property	Value	Source
Space group	P 1 21 1	Depositor
Cell constants a, b, c, α , β , γ	60.35Å 129.63Å 80.49Å 90.00° 108.56° 90.00°	Depositor
Resolution (Å)	34.48 – 2.20 34.48 – 2.20	Depositor EDS
% Data completeness (in resolution range)	99.3 (34.48-2.20) 99.4 (34.48-2.20)	Depositor EDS
R_{merge}	(Not available)	Depositor
R_{sym}	(Not available)	Depositor
$\langle I/\sigma(I) \rangle$ ¹	4.05 (at 2.20Å)	Xtrriage
Refinement program	CNS 1.1	Depositor
R, R_{free}	0.189 , 0.240 0.191 , 0.188	Depositor DCC
R_{free} test set	2965 reflections (5.02%)	wwPDB-VP
Wilson B-factor (Å ²)	28.6	Xtrriage
Anisotropy	0.683	Xtrriage
Bulk solvent k_{sol} (e/Å ³), B_{sol} (Å ²)	0.34 , 48.0	EDS
L-test for twinning ²	$\langle L \rangle = 0.48$, $\langle L^2 \rangle = 0.31$	Xtrriage
Estimated twinning fraction	No twinning to report.	Xtrriage
F_o, F_c correlation	0.95	EDS
Total number of atoms	9058	wwPDB-VP
Average B, all atoms (Å ²)	34.0	wwPDB-VP

Xtrriage's analysis on translational NCS is as follows: *The largest off-origin peak in the Patterson function is 4.83% of the height of the origin peak. No significant pseudotranslation is detected.*

¹Intensities estimated from amplitudes.

²Theoretical values of $\langle |L| \rangle$, $\langle L^2 \rangle$ for acentric reflections are 0.5, 0.333 respectively for untwinned datasets, and 0.375, 0.2 for perfectly twinned datasets.

5 Model quality i

5.1 Standard geometry i

Bond lengths and bond angles in the following residue types are not validated in this section: PO4, 16G, ZN

The Z score for a bond length (or angle) is the number of standard deviations the observed value is removed from the expected value. A bond length (or angle) with $|Z| > 5$ is considered an outlier worth inspection. RMSZ is the root-mean-square of all Z scores of the bond lengths (or angles).

Mol	Chain	Bond lengths		Bond angles	
		RMSZ	# Z >5	RMSZ	# Z >5
1	A	0.43	0/4266	0.90	13/5798 (0.2%)
1	B	0.42	0/4264	0.94	20/5793 (0.3%)
All	All	0.43	0/8530	0.92	33/11591 (0.3%)

There are no bond length outliers.

All (33) bond angle outliers are listed below:

Mol	Chain	Res	Type	Atoms	Z	Observed(°)	Ideal(°)
1	A	452	SER	N-CA-C	-9.21	99.54	110.13
1	B	452	SER	N-CA-C	-7.20	101.68	110.31
1	B	281	VAL	N-CA-C	-7.01	98.33	108.36
1	A	69	PRO	CA-C-N	6.80	128.34	119.84
1	A	69	PRO	C-N-CA	6.80	128.34	119.84
1	B	69	PRO	CA-C-N	6.79	128.33	119.84
1	B	69	PRO	C-N-CA	6.79	128.33	119.84
1	B	387	GLU	N-CA-C	-6.57	99.51	109.95
1	B	408	LYS	CA-C-N	6.54	126.91	119.92
1	B	408	LYS	C-N-CA	6.54	126.91	119.92
1	A	314	LYS	N-CA-C	-6.40	104.40	111.82
1	B	255	GLN	CA-C-N	6.06	126.50	119.47
1	B	255	GLN	C-N-CA	6.06	126.50	119.47
1	B	280	PRO	N-CA-C	5.98	121.00	111.26
1	A	290	ASP	N-CA-C	-5.96	101.17	110.17
1	B	171	THR	N-CA-C	-5.95	102.52	110.55
1	A	244	ILE	N-CA-C	5.94	117.31	108.46
1	B	290	ASP	N-CA-C	-5.86	101.33	110.17
1	A	387	GLU	N-CA-C	-5.56	101.80	110.42
1	B	244	ILE	N-CA-C	5.54	116.71	108.46
1	A	171	THR	N-CA-C	-5.52	103.09	110.55
1	B	314	LYS	N-CA-C	-5.47	105.48	111.82

Continued on next page...

Continued from previous page...

Mol	Chain	Res	Type	Atoms	Z	Observed(°)	Ideal(°)
1	B	357	ASP	N-CA-C	5.44	118.38	111.69
1	B	65	ALA	N-CA-C	-5.42	105.30	112.94
1	B	221	ILE	N-CA-C	5.37	115.68	108.17
1	A	463	LEU	N-CA-C	-5.24	103.43	109.93
1	B	87	SER	N-CA-C	5.23	117.39	111.11
1	A	255	GLN	CA-C-N	5.21	125.51	119.47
1	A	255	GLN	C-N-CA	5.21	125.51	119.47
1	B	291	GLY	N-CA-C	5.16	119.12	112.83
1	B	381	ASP	N-CA-C	-5.10	105.81	111.36
1	A	293	ALA	N-CA-C	5.03	118.38	111.54
1	A	330	ILE	N-CA-C	5.01	115.79	108.53

There are no chirality outliers.

There are no planarity outliers.

5.2 Too-close contacts [i](#)

In the following table, the Non-H and H(model) columns list the number of non-hydrogen atoms and hydrogen atoms in the chain respectively. The H(added) column lists the number of hydrogen atoms added and optimized by MolProbity. The Clashes column lists the number of clashes within the asymmetric unit, whereas Symm-Clashes lists symmetry-related clashes.

Mol	Chain	Non-H	H(model)	H(added)	Clashes	Symm-Clashes
1	A	4181	0	4133	90	0
1	B	4180	0	4134	90	0
2	A	19	0	14	0	0
2	B	19	0	14	0	0
3	A	5	0	0	0	0
3	B	5	0	0	0	0
4	A	1	0	0	0	0
4	B	1	0	0	0	0
5	A	347	0	0	6	0
5	B	300	0	0	12	0
All	All	9058	0	8295	179	0

The all-atom clashscore is defined as the number of clashes found per 1000 atoms (including hydrogen atoms). The all-atom clashscore for this structure is 11.

All (179) close contacts within the same asymmetric unit are listed below, sorted by their clash magnitude.

Atom-1	Atom-2	Interatomic distance (Å)	Clash overlap (Å)
1:B:279:LYS:H	1:B:279:LYS:HE3	0.98	1.08
1:B:475:ARG:HH11	1:B:518:ASP:HA	1.27	0.96
1:A:475:ARG:HE	1:A:518:ASP:HA	1.30	0.95
1:B:279:LYS:H	1:B:279:LYS:CE	1.79	0.95
1:B:279:LYS:HE3	1:B:279:LYS:N	1.80	0.94
1:B:22:PHE:H	1:B:98:ASN:HD21	1.11	0.88
1:A:348:ASN:HD21	1:A:463:LEU:H	1.23	0.87
1:B:6:THR:HA	1:B:9:GLN:HE21	1.39	0.87
1:B:472:VAL:HB	1:B:544:LYS:HG3	1.55	0.86
1:A:409:PRO:HG3	1:A:415:ALA:HA	1.57	0.86
1:B:474:ASP:H	1:B:544:LYS:HZ3	1.25	0.84
1:B:411:ASN:ND2	1:B:413:ASN:HB3	1.96	0.80
1:B:540:SER:O	1:B:543:VAL:HG22	1.82	0.79
1:A:487:LEU:H	1:A:494:GLN:HE21	1.32	0.76
1:B:411:ASN:HD22	1:B:413:ASN:HB3	1.51	0.75
1:A:136:VAL:HG12	1:A:165:GLN:HB3	1.68	0.75
1:A:496:GLU:HG2	1:A:542:LEU:HD21	1.67	0.74
1:A:482:ASN:HD21	1:A:485:ARG:HH21	1.33	0.73
1:A:330:ILE:HD12	1:A:330:ILE:O	1.88	0.73
1:A:491:LYS:HD3	5:A:958:HOH:O	1.87	0.73
1:A:338:ASN:HD22	1:A:338:ASN:C	1.96	0.73
1:B:506:ASN:HD22	1:B:527:ASP:HB3	1.57	0.70
1:B:464:PRO:HD2	1:B:526:ALA:O	1.92	0.70
1:A:487:LEU:H	1:A:494:GLN:NE2	1.89	0.70
1:B:88:SER:O	1:B:91:LYS:HE2	1.92	0.70
1:B:474:ASP:H	1:B:544:LYS:NZ	1.88	0.70
1:A:482:ASN:ND2	1:A:485:ARG:HH21	1.90	0.70
1:B:234:GLU:CD	1:B:238:LYS:HG3	2.19	0.66
1:B:6:THR:HA	1:B:9:GLN:NE2	2.09	0.66
1:B:150:MET:HB2	5:B:1200:HOH:O	1.94	0.66
1:B:475:ARG:NH1	1:B:518:ASP:HA	2.06	0.65
1:A:86:GLU:OE1	1:B:375:HIS:HE1	1.78	0.65
1:B:529:GLN:O	1:B:533:GLU:HG2	1.96	0.64
1:B:2:SER:HB3	1:B:5:GLN:NE2	2.14	0.63
1:A:409:PRO:HB3	1:A:414:GLU:HG2	1.81	0.63
1:B:489:GLU:HA	1:B:490:PRO:C	2.23	0.63
1:B:295:ARG:HD2	1:B:391:HIS:CD2	2.34	0.62
1:A:472:VAL:HG13	1:A:473:PRO:HD2	1.81	0.62
1:A:115:VAL:O	1:A:119:LYS:HG3	2.01	0.60
1:A:496:GLU:HA	1:A:496:GLU:OE1	2.01	0.60
1:A:472:VAL:HG12	1:A:474:ASP:H	1.65	0.60
1:A:266:ASP:HB2	1:A:295:ARG:NH2	2.17	0.59

Continued on next page...

Continued from previous page...

Atom-1	Atom-2	Interatomic distance (Å)	Clash overlap (Å)
1:A:533:GLU:O	1:A:537:LYS:HG3	2.03	0.59
1:A:2:SER:OG	1:A:5:GLN:HG3	2.02	0.59
1:B:470:VAL:HG11	1:B:543:VAL:HG23	1.83	0.59
1:B:474:ASP:OD1	1:B:476:SER:HB3	2.03	0.58
1:B:256:PRO:HG2	5:B:973:HOH:O	2.03	0.57
1:B:279:LYS:HG2	1:B:279:LYS:O	2.04	0.57
1:A:81:LEU:O	1:A:180:ARG:HD2	2.05	0.57
1:A:43:VAL:O	1:A:46:ILE:HG22	2.05	0.56
1:A:65:ALA:HB2	1:A:73:ASN:HA	1.87	0.56
1:A:418:ILE:O	1:A:422:GLN:HG3	2.06	0.56
1:A:171:THR:HG23	1:A:231:LYS:HG3	1.88	0.56
1:A:415:ALA:O	1:A:418:ILE:HG22	2.04	0.56
1:B:482:ASN:HD21	1:B:485:ARG:HH21	1.53	0.56
1:A:338:ASN:ND2	1:A:381:ASP:H	2.04	0.56
1:A:487:LEU:HB2	1:A:494:GLN:HE21	1.70	0.56
1:A:282:ASN:ND2	1:A:301:GLN:HE21	2.04	0.56
1:A:2:SER:H	1:A:5:GLN:NE2	2.04	0.55
1:A:268:VAL:HG23	1:A:297:ILE:HG21	1.89	0.55
1:B:327:PHE:CE1	1:B:339:ILE:HD11	2.42	0.55
1:B:310:LEU:HA	1:B:314:LYS:HG3	1.90	0.54
1:B:136:VAL:HG12	1:B:165:GLN:HB3	1.90	0.53
1:B:274:LEU:HD11	1:B:280:PRO:HG3	1.90	0.53
1:A:338:ASN:HD21	1:A:381:ASP:H	1.57	0.53
1:B:363:VAL:HG22	5:B:1179:HOH:O	2.08	0.52
1:A:65:ALA:HB2	1:A:73:ASN:CA	2.40	0.52
1:A:180:ARG:HG3	1:A:180:ARG:HH11	1.74	0.52
1:A:487:LEU:CB	1:A:494:GLN:HE21	2.22	0.52
1:A:310:LEU:HA	1:A:314:LYS:HG3	1.90	0.52
1:A:355:VAL:HG11	1:A:363:VAL:HG22	1.91	0.52
1:B:543:VAL:HG23	1:B:543:VAL:O	2.09	0.51
1:A:2:SER:H	1:A:5:GLN:HE21	1.56	0.51
1:B:367:PRO:HG3	1:B:483:ALA:HA	1.91	0.51
1:A:475:ARG:NE	1:A:518:ASP:HA	2.13	0.51
1:B:295:ARG:HD2	1:B:391:HIS:NE2	2.26	0.51
1:B:470:VAL:HG21	1:B:543:VAL:HG21	1.93	0.51
1:B:4:GLU:OE2	1:B:119:LYS:HD2	2.12	0.50
1:B:543:VAL:O	1:B:544:LYS:HB2	2.12	0.50
1:B:493:MET:HE1	5:B:905:HOH:O	2.10	0.50
1:B:482:ASN:ND2	1:B:485:ARG:HH21	2.08	0.50
1:B:52:LYS:HG3	1:B:133:ALA:HB2	1.94	0.50
1:B:65:ALA:HB2	1:B:73:ASN:HA	1.93	0.50

Continued on next page...

Continued from previous page...

Atom-1	Atom-2	Interatomic distance (Å)	Clash overlap (Å)
1:A:338:ASN:C	1:A:338:ASN:ND2	2.69	0.50
1:A:357:ASP:O	1:A:360:LYS:HE3	2.12	0.50
1:B:138:ALA:HB1	1:B:170:PHE:HB2	1.93	0.50
1:A:463:LEU:O	1:A:464:PRO:C	2.53	0.49
1:A:23:THR:HA	1:A:94:THR:HG23	1.95	0.49
1:B:36:LEU:HD23	1:B:148:LEU:HD13	1.95	0.49
1:B:468:VAL:CG1	1:B:469:LYS:N	2.76	0.48
1:B:470:VAL:HG11	1:B:543:VAL:CG2	2.43	0.48
1:B:473:PRO:HD2	1:B:544:LYS:HZ2	1.76	0.48
1:A:11:LEU:HD11	1:A:101:PRO:HB3	1.95	0.48
1:B:171:THR:HG23	1:B:231:LYS:HG3	1.96	0.48
1:B:335:ILE:HD11	1:B:403:LYS:HE2	1.95	0.48
1:B:344:THR:CG2	1:B:373:LEU:HD11	2.43	0.48
1:A:327:PHE:HA	1:A:330:ILE:HG13	1.96	0.48
1:B:279:LYS:H	1:B:279:LYS:CD	2.27	0.48
1:A:370:VAL:HG23	1:A:371:LYS:N	2.29	0.47
1:B:472:VAL:CB	1:B:544:LYS:HG3	2.35	0.47
1:B:65:ALA:HB3	1:B:142:ARG:CZ	2.44	0.47
1:B:2:SER:HB3	1:B:5:GLN:CD	2.39	0.47
1:B:257:ASN:ND2	5:B:973:HOH:O	2.48	0.47
1:A:172:THR:HB	1:A:173:PRO:HD3	1.97	0.47
1:B:234:GLU:OE2	1:B:238:LYS:HG3	2.14	0.47
1:B:43:VAL:O	1:B:46:ILE:HG22	2.15	0.47
1:A:180:ARG:NE	5:A:1017:HOH:O	2.45	0.47
1:B:63:ILE:HD12	1:B:63:ILE:N	2.29	0.47
1:A:478:PHE:HA	1:A:489:GLU:O	2.16	0.46
1:B:65:ALA:HB2	1:B:73:ASN:CA	2.44	0.46
1:B:272:GLN:OE1	1:B:309:LEU:HD22	2.15	0.46
1:A:38:TYR:O	1:A:42:THR:HG23	2.16	0.46
1:B:238:LYS:HA	1:B:238:LYS:NZ	2.30	0.46
1:A:479:LYS:HB2	1:A:489:GLU:HB2	1.98	0.46
1:A:466:LYS:NZ	5:A:1097:HOH:O	2.48	0.45
1:B:407:TYR:HH	1:B:414:GLU:CD	2.24	0.45
1:B:2:SER:CB	1:B:5:GLN:NE2	2.80	0.45
1:B:5:GLN:NE2	5:B:1108:HOH:O	2.45	0.45
1:B:3:ILE:HG23	1:B:4:GLU:N	2.31	0.45
1:A:343:GLN:HB3	5:A:909:HOH:O	2.15	0.45
1:A:224:ALA:HA	1:A:263:CYS:SG	2.57	0.45
1:A:348:ASN:ND2	1:A:463:LEU:H	2.03	0.45
1:A:501:VAL:HG13	1:A:507:GLY:C	2.42	0.45
1:A:505:PRO:O	1:A:506:ASN:HB2	2.16	0.45

Continued on next page...

Continued from previous page...

Atom-1	Atom-2	Interatomic distance (Å)	Clash overlap (Å)
1:B:329:GLN:OE1	1:B:413:ASN:ND2	2.49	0.45
1:A:138:ALA:HB1	1:A:170:PHE:HB2	1.99	0.44
1:B:343:GLN:HB3	5:B:922:HOH:O	2.17	0.44
1:B:479:LYS:O	1:B:488:VAL:HG22	2.16	0.44
1:A:65:ALA:HB3	1:A:142:ARG:CZ	2.48	0.44
1:B:88:SER:O	1:B:91:LYS:HG2	2.17	0.44
1:A:355:VAL:CG1	1:A:363:VAL:HG22	2.47	0.44
1:B:369:GLY:HA3	5:B:1168:HOH:O	2.17	0.44
1:A:476:SER:O	1:A:479:LYS:HE3	2.18	0.44
1:B:416:LYS:O	1:B:420:VAL:HG23	2.18	0.44
1:A:266:ASP:HB2	1:A:295:ARG:HH21	1.83	0.44
1:B:335:ILE:CD1	1:B:403:LYS:HE2	2.47	0.44
1:B:323:LEU:HD13	1:B:382:ILE:HG21	2.00	0.43
1:A:482:ASN:HD21	1:A:485:ARG:NH2	2.06	0.43
1:A:102:SER:HB3	1:A:103:PRO:HD2	2.00	0.43
1:B:539:VAL:O	1:B:542:LEU:HB2	2.19	0.43
1:A:465:ASN:HA	1:A:532:VAL:HG21	2.01	0.43
1:B:267:TYR:CD1	1:B:271:ASN:ND2	2.87	0.43
1:B:355:VAL:HG11	1:B:363:VAL:HG12	2.00	0.43
1:A:514:SER:HB3	1:A:517:GLU:O	2.19	0.43
1:A:331:ASP:CG	1:A:334:LYS:HG2	2.44	0.43
1:A:405:PHE:CE2	1:A:422:GLN:HB3	2.54	0.43
1:A:18:GLN:C	1:A:18:GLN:OE1	2.62	0.43
1:B:529:GLN:O	1:B:532:VAL:HG12	2.18	0.43
1:A:91:LYS:HB2	5:A:970:HOH:O	2.19	0.42
1:B:434:ASP:HB3	1:B:437:SER:HB3	1.99	0.42
1:A:464:PRO:HD2	1:A:526:ALA:O	2.20	0.42
1:A:212:SER:C	1:A:214:ASN:H	2.26	0.42
1:B:321:LEU:O	1:B:325:GLN:HG2	2.19	0.42
1:B:11:LEU:N	1:B:12:PRO:CD	2.82	0.42
1:B:76:LYS:HE3	1:B:76:LYS:HB2	1.85	0.42
1:A:362:PRO:HG3	5:B:1099:HOH:O	2.19	0.42
1:A:487:LEU:O	1:A:494:GLN:HG2	2.20	0.42
1:B:6:THR:CA	1:B:9:GLN:HE21	2.19	0.42
1:A:529:GLN:O	1:A:532:VAL:HG12	2.19	0.42
1:A:22:PHE:CD2	1:A:31:MET:HE1	2.54	0.41
1:A:472:VAL:CG1	1:A:473:PRO:HD2	2.48	0.41
1:A:487:LEU:N	1:A:494:GLN:HE21	2.09	0.41
1:A:234:GLU:OE2	1:A:238:LYS:HG3	2.20	0.41
1:B:463:LEU:O	1:B:464:PRO:C	2.61	0.41
1:A:409:PRO:HG3	1:A:415:ALA:CA	2.40	0.41

Continued on next page...

Continued from previous page...

Atom-1	Atom-2	Interatomic distance (Å)	Clash overlap (Å)
1:A:287:ALA:HB1	1:A:296:LEU:HD11	2.02	0.41
1:A:402:LYS:HG2	1:A:406:ASP:OD2	2.20	0.41
1:A:475:ARG:HD3	1:A:519:ALA:H	1.85	0.41
1:B:147:ALA:HA	5:B:1200:HOH:O	2.20	0.41
1:B:214:ASN:N	5:B:1039:HOH:O	2.54	0.41
1:A:499:LYS:HA	1:A:499:LYS:HD2	1.82	0.41
1:A:338:ASN:ND2	1:A:338:ASN:O	2.39	0.40
1:A:209:ILE:HD11	1:A:419:LYS:HD3	2.03	0.40
1:A:224:ALA:HB2	1:A:264:GLY:HA2	2.02	0.40
1:A:478:PHE:CZ	1:A:543:VAL:HG13	2.56	0.40
1:B:257:ASN:HB3	5:B:1146:HOH:O	2.21	0.40
1:B:22:PHE:N	1:B:98:ASN:HD21	1.95	0.40
1:B:478:PHE:HE1	1:B:544:LYS:HE3	1.86	0.40
1:A:98:ASN:HA	5:A:1083:HOH:O	2.21	0.40

There are no symmetry-related clashes.

5.3 Torsion angles [i](#)

5.3.1 Protein backbone [i](#)

In the following table, the Percentiles column shows the percent Ramachandran outliers of the chain as a percentile score with respect to all X-ray entries followed by that with respect to entries of similar resolution.

The Analysed column shows the number of residues for which the backbone conformation was analysed, and the total number of residues.

Mol	Chain	Analysed	Favoured	Allowed	Outliers	Percentiles	
1	A	532/544 (98%)	511 (96%)	20 (4%)	1 (0%)	43	51
1	B	529/544 (97%)	507 (96%)	21 (4%)	1 (0%)	43	51
All	All	1061/1088 (98%)	1018 (96%)	41 (4%)	2 (0%)	43	51

All (2) Ramachandran outliers are listed below:

Mol	Chain	Res	Type
1	B	210	CYS
1	A	211	GLU

5.3.2 Protein sidechains [i](#)

In the following table, the Percentiles column shows the percent sidechain outliers of the chain as a percentile score with respect to all X-ray entries followed by that with respect to entries of similar resolution.

The Analysed column shows the number of residues for which the sidechain conformation was analysed, and the total number of residues.

Mol	Chain	Analysed	Rotameric	Outliers	Percentiles	
1	A	465/480 (97%)	458 (98%)	7 (2%)	57	73
1	B	466/480 (97%)	463 (99%)	3 (1%)	78	89
All	All	931/960 (97%)	921 (99%)	10 (1%)	65	79

All (10) residues with a non-rotameric sidechain are listed below:

Mol	Chain	Res	Type
1	A	18	GLN
1	A	91	LYS
1	A	170	PHE
1	A	338	ASN
1	A	361	ILE
1	A	494	GLN
1	A	530	ASN
1	B	170	PHE
1	B	238	LYS
1	B	279	LYS

Sometimes sidechains can be flipped to improve hydrogen bonding and reduce clashes. All (39) such sidechains are listed below:

Mol	Chain	Res	Type
1	A	5	GLN
1	A	9	GLN
1	A	134	ASN
1	A	161	ASN
1	A	204	GLN
1	A	257	ASN
1	A	260	ASN
1	A	271	ASN
1	A	272	GLN
1	A	282	ASN
1	A	325	GLN
1	A	338	ASN

Continued on next page...

Continued from previous page...

Mol	Chain	Res	Type
1	A	343	GLN
1	A	348	ASN
1	A	372	HIS
1	A	482	ASN
1	A	494	GLN
1	A	506	ASN
1	A	529	GLN
1	B	9	GLN
1	B	98	ASN
1	B	112	ASN
1	B	134	ASN
1	B	165	GLN
1	B	204	GLN
1	B	255	GLN
1	B	271	ASN
1	B	282	ASN
1	B	325	GLN
1	B	343	GLN
1	B	372	HIS
1	B	375	HIS
1	B	410	ASN
1	B	447	HIS
1	B	458	ASN
1	B	482	ASN
1	B	506	ASN
1	B	529	GLN
1	B	530	ASN

5.3.3 RNA [i](#)

There are no RNA molecules in this entry.

5.4 Non-standard residues in protein, DNA, RNA chains [i](#)

There are no non-standard protein/DNA/RNA residues in this entry.

5.5 Carbohydrates [i](#)

There are no oligosaccharides in this entry.

5.6 Ligand geometry

Of 6 ligands modelled in this entry, 2 are monoatomic - leaving 4 for Mogul analysis.

In the following table, the Counts columns list the number of bonds (or angles) for which Mogul statistics could be retrieved, the number of bonds (or angles) that are observed in the model and the number of bonds (or angles) that are defined in the Chemical Component Dictionary. The Link column lists molecule types, if any, to which the group is linked. The Z score for a bond length (or angle) is the number of standard deviations the observed value is removed from the expected value. A bond length (or angle) with $|Z| > 2$ is considered an outlier worth inspection. RMSZ is the root-mean-square of all Z scores of the bond lengths (or angles).

Mol	Type	Chain	Res	Link	Bond lengths			Bond angles		
					Counts	RMSZ	# Z > 2	Counts	RMSZ	# Z > 2
2	16G	A	701	-	19,19,19	1.77	5 (26%)	27,28,28	2.21	10 (37%)
2	16G	B	702	-	19,19,19	1.90	5 (26%)	27,28,28	2.17	9 (33%)
3	PO4	A	802	4	4,4,4	1.82	1 (25%)	6,6,6	0.45	0
3	PO4	B	801	4	4,4,4	1.82	2 (50%)	6,6,6	0.46	0

In the following table, the Chirals column lists the number of chiral outliers, the number of chiral centers analysed, the number of these observed in the model and the number defined in the Chemical Component Dictionary. Similar counts are reported in the Torsion and Rings columns. '-' means no outliers of that kind were identified.

Mol	Type	Chain	Res	Link	Chirals	Torsions	Rings
2	16G	A	701	-	-	0/10/30/30	0/1/1/1
2	16G	B	702	-	-	0/10/30/30	0/1/1/1

All (13) bond length outliers are listed below:

Mol	Chain	Res	Type	Atoms	Z	Observed(Å)	Ideal(Å)
2	B	702	16G	C1-C2	4.80	1.58	1.52
2	A	701	16G	O6-C6	-3.90	1.29	1.44
2	B	702	16G	O6-C6	-3.87	1.29	1.44
2	A	701	16G	C1-C2	3.63	1.57	1.52
2	A	701	16G	C4-C5	2.86	1.59	1.53
2	B	702	16G	C4-C5	2.72	1.58	1.53
2	A	701	16G	P-O3P	-2.64	1.45	1.54
2	B	702	16G	P-O3P	-2.43	1.45	1.54
3	A	802	PO4	P-O3	-2.16	1.48	1.54
2	A	701	16G	P-O2P	-2.12	1.46	1.54
3	B	801	PO4	P-O2	-2.09	1.48	1.54
3	B	801	PO4	P-O4	-2.03	1.48	1.54
2	B	702	16G	P-O2P	-2.00	1.47	1.54

All (19) bond angle outliers are listed below:

Mol	Chain	Res	Type	Atoms	Z	Observed(°)	Ideal(°)
2	A	701	16G	O5-C5-C6	-4.52	97.73	106.69
2	A	701	16G	C6-C5-C4	4.36	121.21	112.07
2	A	701	16G	C1-C2-N2	-4.35	105.69	110.73
2	A	701	16G	C1-O5-C5	4.32	122.00	113.65
2	B	702	16G	C6-C5-C4	4.31	121.12	112.07
2	B	702	16G	C1-C2-N2	-4.20	105.86	110.73
2	B	702	16G	O5-C5-C6	-4.12	98.53	106.69
2	B	702	16G	C1-O5-C5	4.09	121.57	113.65
2	B	702	16G	C1-C2-C3	-2.92	106.56	110.54
2	A	701	16G	O6-C6-C5	2.64	117.99	108.99
2	A	701	16G	O6-P-O1P	-2.63	99.34	106.44
2	B	702	16G	O6-P-O1P	-2.53	99.60	106.44
2	A	701	16G	O3P-P-O2P	2.44	116.97	107.80
2	A	701	16G	O2P-P-O6	2.40	112.94	106.67
2	B	702	16G	O2P-P-O6	2.39	112.89	106.67
2	A	701	16G	C1-C2-C3	-2.26	107.46	110.54
2	B	702	16G	O6-C6-C5	2.20	116.49	108.99
2	B	702	16G	O3P-P-O2P	2.20	116.05	107.80
2	A	701	16G	C2-N2-C7	-2.17	118.03	123.11

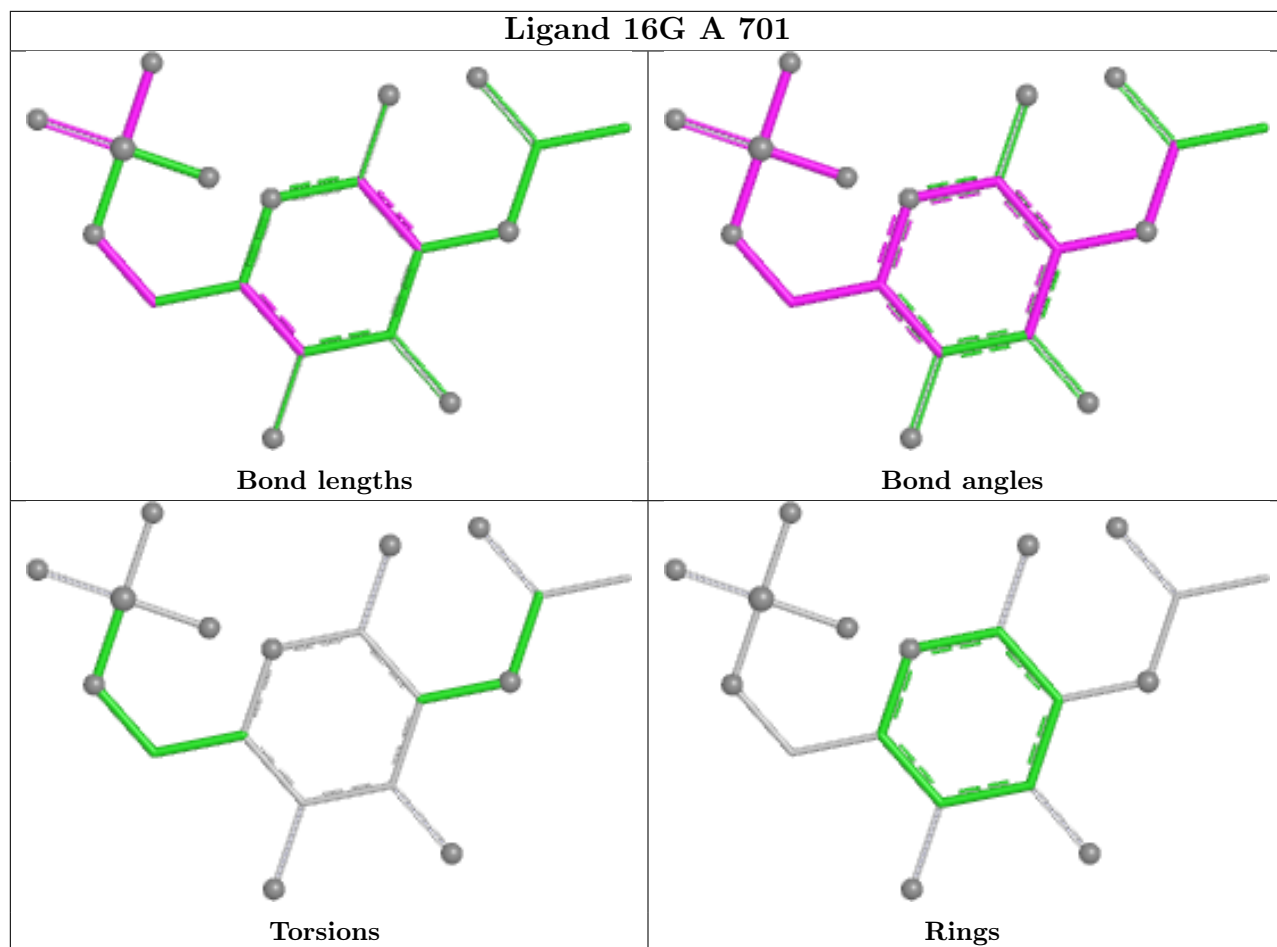
There are no chirality outliers.

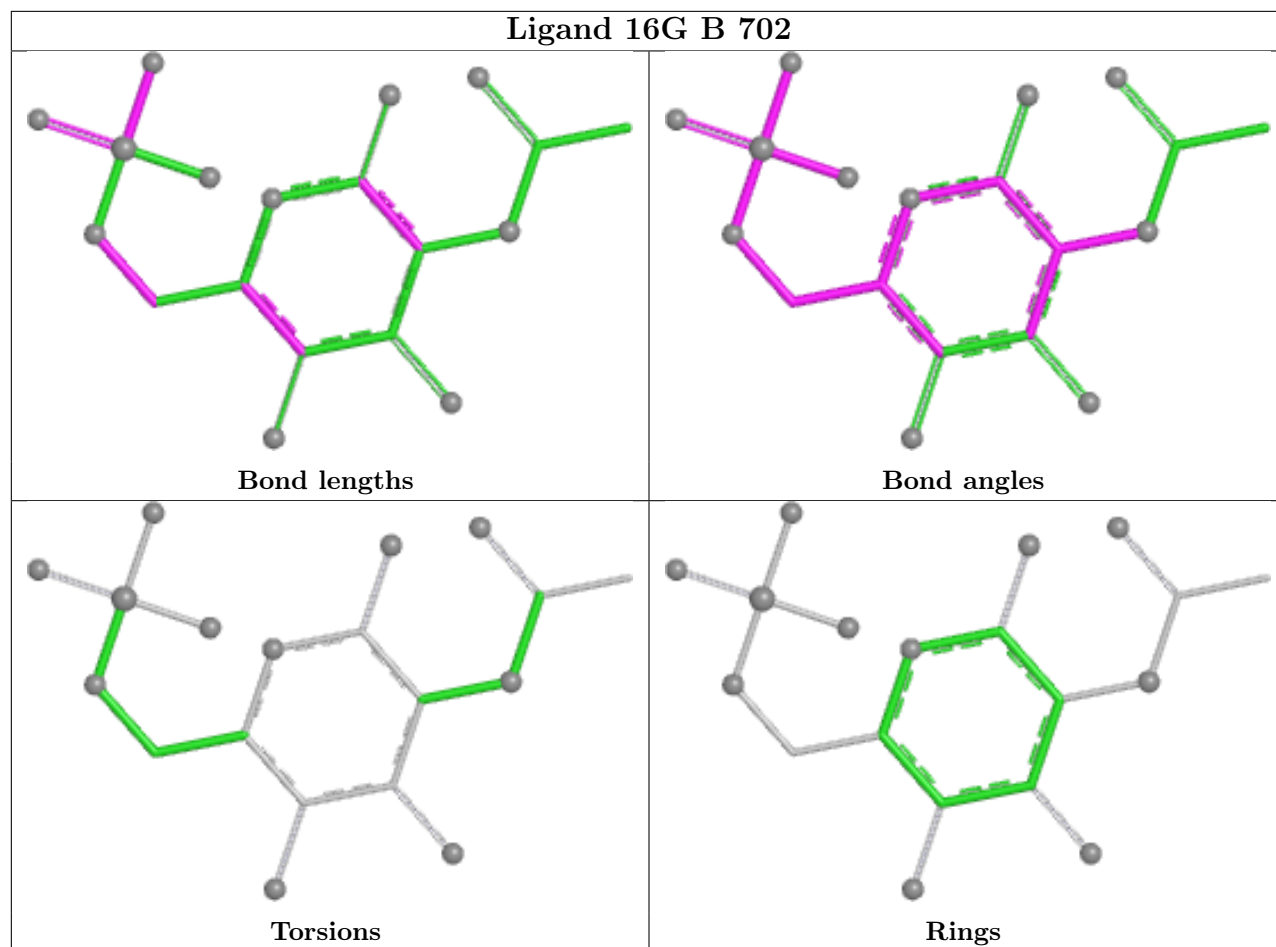
There are no torsion outliers.

There are no ring outliers.

No monomer is involved in short contacts.

The following is a two-dimensional graphical depiction of Mogul quality analysis of bond lengths, bond angles, torsion angles, and ring geometry for all instances of the Ligand of Interest. In addition, ligands with molecular weight > 250 and outliers as shown on the validation Tables will also be included. For torsion angles, if less than 5% of the Mogul distribution of torsion angles is within 10 degrees of the torsion angle in question, then that torsion angle is considered an outlier. Any bond that is central to one or more torsion angles identified as an outlier by Mogul will be highlighted in the graph. For rings, the root-mean-square deviation (RMSD) between the ring in question and similar rings identified by Mogul is calculated over all ring torsion angles. If the average RMSD is greater than 60 degrees and the minimal RMSD between the ring in question and any Mogul-identified rings is also greater than 60 degrees, then that ring is considered an outlier. The outliers are highlighted in purple. The color gray indicates Mogul did not find sufficient equivalents in the CSD to analyse the geometry.





5.7 Other polymers [i](#)

There are no such residues in this entry.

5.8 Polymer linkage issues [i](#)

There are no chain breaks in this entry.

6 Fit of model and data [i](#)

6.1 Protein, DNA and RNA chains [i](#)

In the following table, the column labelled '#RSRZ > 2' contains the number (and percentage) of RSRZ outliers, followed by percent RSRZ outliers for the chain as percentile scores relative to all X-ray entries and entries of similar resolution. The OWAB column contains the minimum, median, 95th percentile and maximum values of the occupancy-weighted average B-factor per residue. The column labelled 'Q < 0.9' lists the number of (and percentage) of residues with an average occupancy less than 0.9.

Mol	Chain	Analysed	<RSRZ>	#RSRZ>2	OWAB(Å ²)	Q<0.9
1	A	536/544 (98%)	-0.24	7 (1%) 75 73	17, 30, 58, 77	0
1	B	535/544 (98%)	-0.16	7 (1%) 75 73	17, 32, 58, 80	0
All	All	1071/1088 (98%)	-0.20	14 (1%) 75 73	17, 31, 58, 80	0

All (14) RSRZ outliers are listed below:

Mol	Chain	Res	Type	RSRZ
1	A	213	ASN	4.3
1	A	19	GLY	2.9
1	B	407	TYR	2.6
1	B	338	ASN	2.6
1	B	26	THR	2.4
1	B	519	ALA	2.3
1	A	214	ASN	2.2
1	A	103	PRO	2.2
1	B	330	ILE	2.2
1	B	111	LYS	2.2
1	A	1	MET	2.1
1	A	211	GLU	2.1
1	A	330	ILE	2.1
1	B	103	PRO	2.1

6.2 Non-standard residues in protein, DNA, RNA chains [i](#)

There are no non-standard protein/DNA/RNA residues in this entry.

6.3 Carbohydrates [i](#)

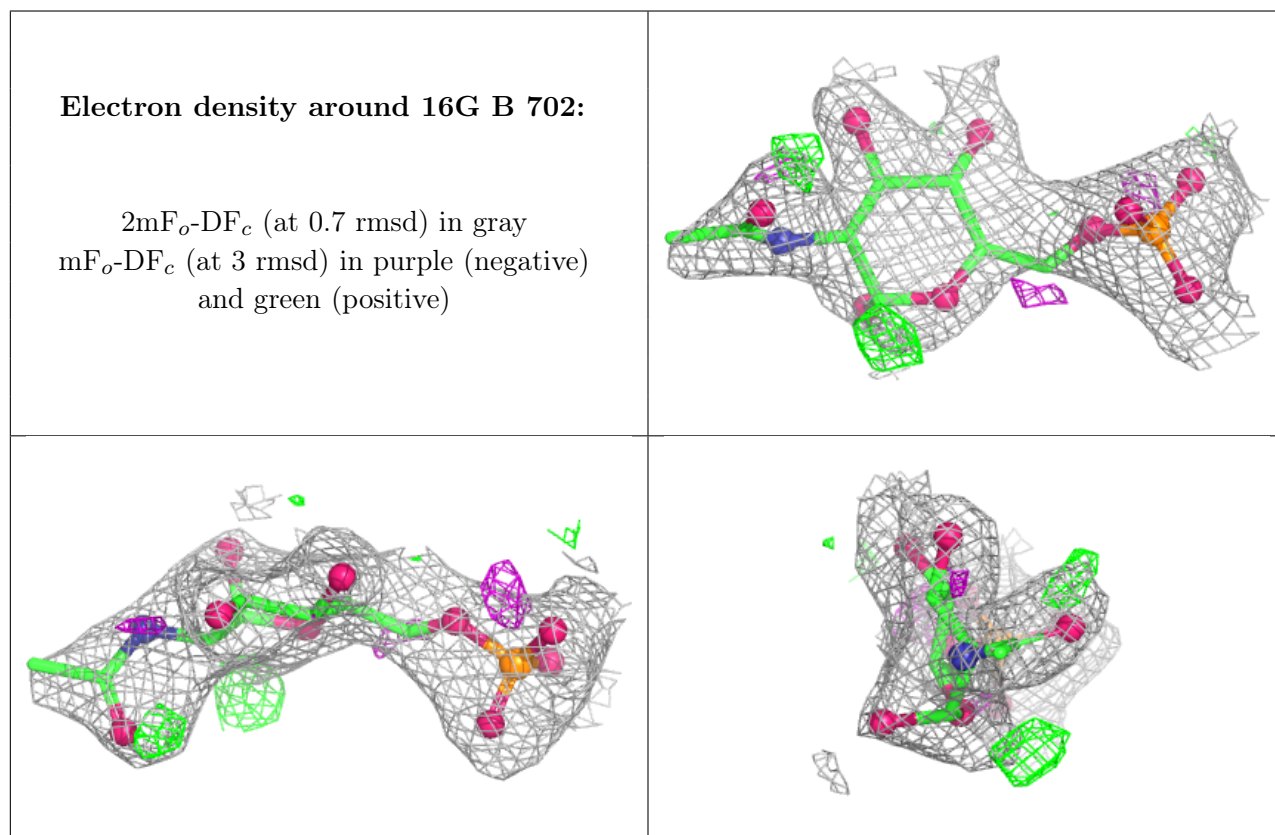
There are no oligosaccharides in this entry.

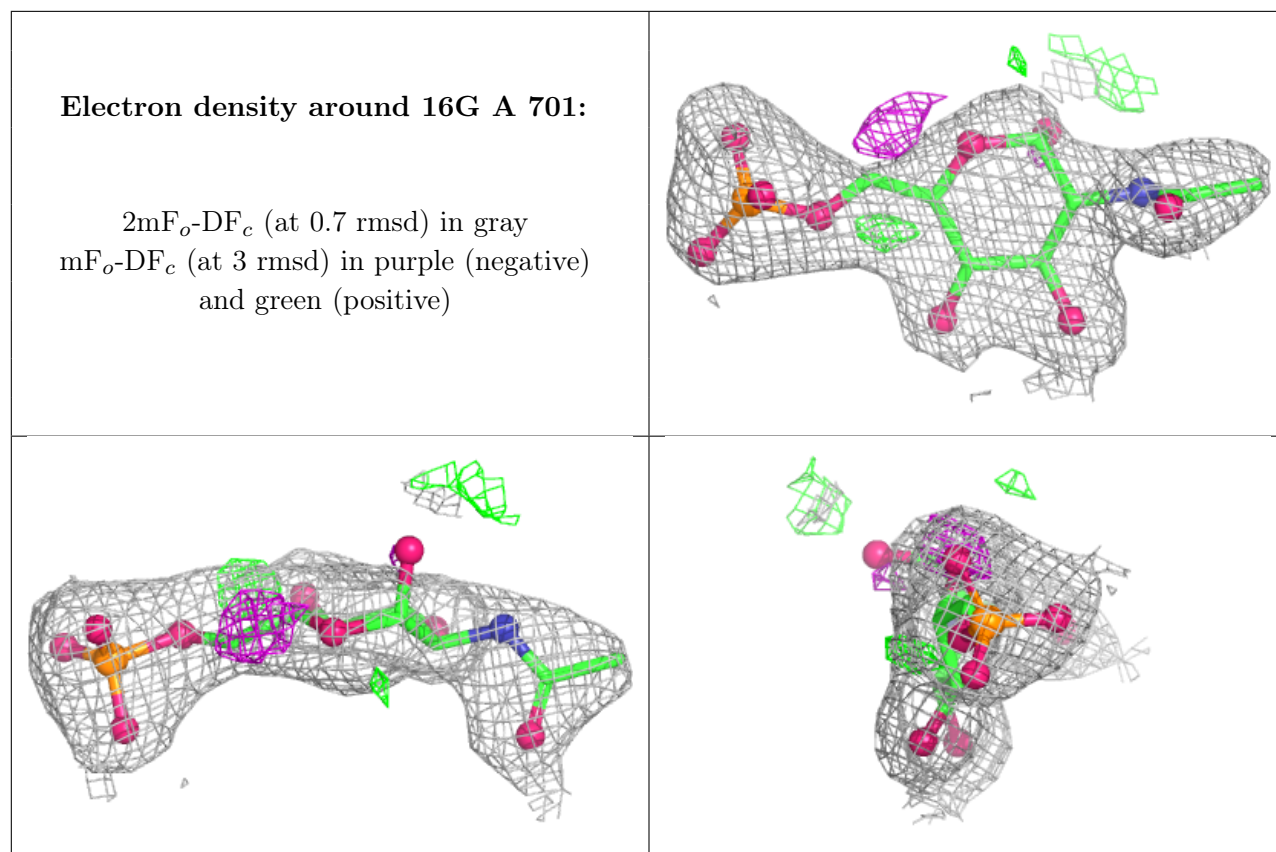
6.4 Ligands [i](#)

In the following table, the Atoms column lists the number of modelled atoms in the group and the number defined in the chemical component dictionary. The B-factors column lists the minimum, median, 95th percentile and maximum values of B factors of atoms in the group. The column labelled 'Q<0.9' lists the number of atoms with occupancy less than 0.9.

Mol	Type	Chain	Res	Atoms	RSCC	RSR	B-factors(Å ²)	Q<0.9
3	PO4	A	802	5/5	0.84	0.25	36,36,39,41	5
2	16G	B	702	19/19	0.85	0.15	48,56,58,59	0
3	PO4	B	801	5/5	0.91	0.13	28,29,30,33	5
2	16G	A	701	19/19	0.93	0.10	32,41,45,52	0
4	ZN	A	901	1/1	0.98	0.05	37,37,37,37	1
4	ZN	B	902	1/1	0.99	0.06	37,37,37,37	1

The following is a graphical depiction of the model fit to experimental electron density of all instances of the Ligand of Interest. In addition, ligands with molecular weight > 250 and outliers as shown on the geometry validation Tables will also be included. Each fit is shown from different orientation to approximate a three-dimensional view.





6.5 Other polymers [i](#)

There are no such residues in this entry.