



wwPDB X-ray Structure Validation Summary Report

Mar 5, 2026 – 12:44 PM UTC

PDB ID : 4DKI / pdb_00004dki
Title : Structural Insights into the Anti- Methicillin-Resistant Staphylococcus aureus (MRSA) Activity of Ceftobiprole
Authors : Lovering, A.L.; Gretes, M.C.; Strynadka, N.C.J.
Deposited on : 2012-02-03
Resolution : 2.90 Å (reported)

This is a wwPDB X-ray Structure Validation Summary Report for a publicly released PDB entry.

We welcome your comments at validation@mail.wwpdb.org

A user guide is available at

<https://www.wwpdb.org/validation/2017/XrayValidationReportHelp>

with specific help available everywhere you see the  symbol.

The types of validation reports are described at

<http://www.wwpdb.org/validation/2017/FAQs#types>.

The following versions of software and data (see [references](#) ) were used in the production of this report:

MolProbity : 4-5-2 with Phenix2.0
Mogul : 2022.3.0, CSD as543be (2022)
Xtrriage (Phenix) : 2.0
EDS : 3.0
Buster-report : wwPDB partial adaption of 1.1.7 (2018)
Percentile statistics : 20250101.v01 (using entries in the PDB archive January 1st 2025)
CCP4 : 9.0.010 (Gargrove)
Density-Fitness : 1.0.12
Ideal geometry (proteins) : Engh & Huber (2001)
Ideal geometry (DNA, RNA) : Parkinson et al. (1996)
Validation Pipeline (wwPDB-VP) : 2.49

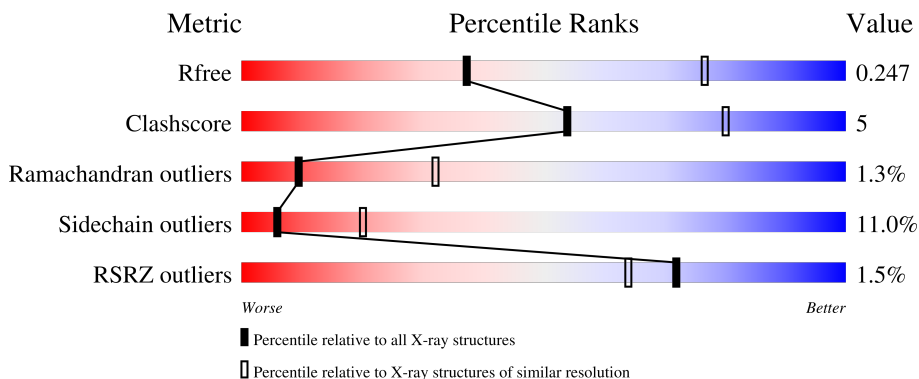
1 Overall quality at a glance

The following experimental techniques were used to determine the structure:

X-RAY DIFFRACTION

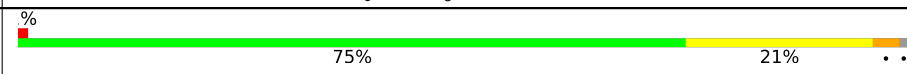
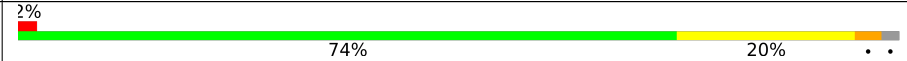
The reported resolution of this entry is 2.90 Å.

Percentile scores (ranging between 0-100) for global validation metrics of the entry are shown in the following graphic. The table shows the number of entries on which the scores are based.



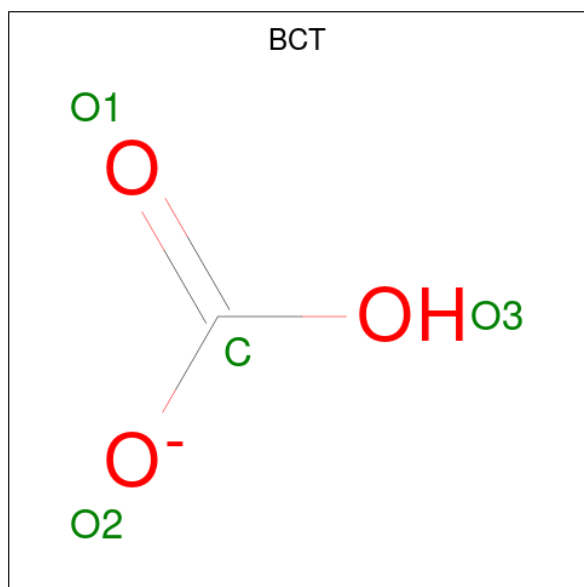
Metric	Whole archive (#Entries)	Similar resolution (#Entries, resolution range(Å))
R_{free}	180053	2481 (2.90-2.90)
Clashscore	190562	2690 (2.90-2.90)
Ramachandran outliers	187476	2623 (2.90-2.90)
Sidechain outliers	187428	2625 (2.90-2.90)
RSRZ outliers	180081	2481 (2.90-2.90)

The table below summarises the geometric issues observed across the polymeric chains and their fit to the electron density. The red, orange, yellow and green segments of the lower bar indicate the fraction of residues that contain outliers for ≥ 3 , 2, 1 and 0 types of geometric quality criteria respectively. A grey segment represents the fraction of residues that are not modelled. The numeric value for each fraction is indicated below the corresponding segment, with a dot representing fractions $\leq 5\%$. The upper red bar (where present) indicates the fraction of residues that have poor fit to the electron density. The numeric value is given above the bar.

Mol	Chain	Length	Quality of chain
1	A	646	 2% 75% 21% ..
1	B	646	 2% 74% 20% ..

Mol	Chain	Residues	Atoms				ZeroOcc	AltConf	
			Total	C	N	O			S
2	A	1	45	23	12	7	3	0	1
2	B	1	36	20	8	6	2	0	0

- Molecule 3 is BICARBONATE ION (CCD ID: BCT) (formula: CHO_3).



Mol	Chain	Residues	Atoms		ZeroOcc	AltConf
			Total	C O		
3	A	1	4	1 3	0	0
3	A	1	4	1 3	0	0
3	A	1	4	1 3	0	0
3	B	1	4	1 3	0	0

- Molecule 4 is CADMIUM ION (CCD ID: CD) (formula: Cd).

Mol	Chain	Residues	Atoms		ZeroOcc	AltConf
			Total	Cd		
4	A	3	3	3	0	0
4	B	4	4	4	0	0

- Molecule 5 is CHLORIDE ION (CCD ID: CL) (formula: Cl).

Mol	Chain	Residues	Atoms	ZeroOcc	AltConf
5	A	2	Total Cl 2 2	0	0
5	B	2	Total Cl 2 2	0	0

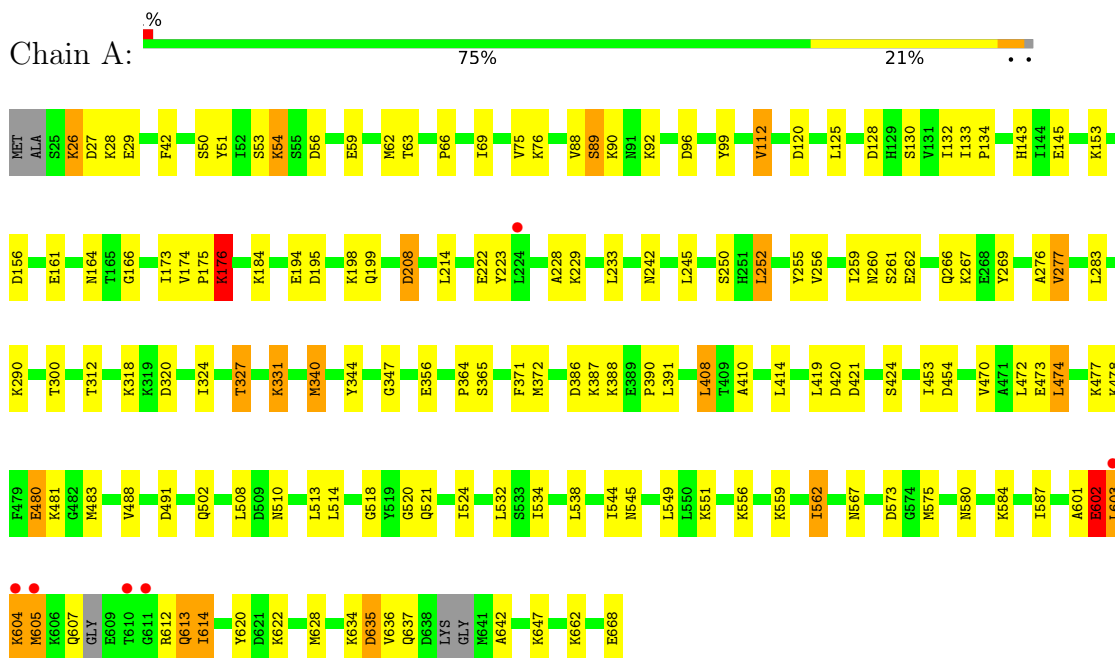
- Molecule 6 is water.

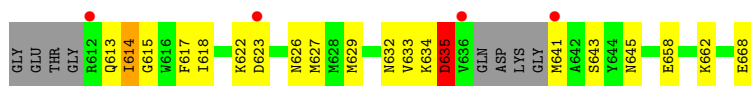
Mol	Chain	Residues	Atoms	ZeroOcc	AltConf
6	A	18	Total O 18 18	0	0
6	B	21	Total O 21 21	0	0

3 Residue-property plots

These plots are drawn for all protein, RNA, DNA and oligosaccharide chains in the entry. The first graphic for a chain summarises the proportions of the various outlier classes displayed in the second graphic. The second graphic shows the sequence view annotated by issues in geometry and electron density. Residues are color-coded according to the number of geometric quality criteria for which they contain at least one outlier: green = 0, yellow = 1, orange = 2 and red = 3 or more. A red dot above a residue indicates a poor fit to the electron density ($RSRZ > 2$). Stretches of 2 or more consecutive residues without any outlier are shown as a green connector. Residues present in the sample, but not in the model, are shown in grey.

- Molecule 1: Penicillin-binding protein 2'





4 Data and refinement statistics

Property	Value	Source
Space group	P 21 21 21	Depositor
Cell constants a, b, c, α , β , γ	80.85Å 103.47Å 186.50Å 90.00° 90.00° 90.00°	Depositor
Resolution (Å)	53.29 – 2.90 53.29 – 2.90	Depositor EDS
% Data completeness (in resolution range)	91.8 (53.29-2.90) 91.8 (53.29-2.90)	Depositor EDS
R_{merge}	(Not available)	Depositor
R_{sym}	0.07	Depositor
$\langle I/\sigma(I) \rangle$ ¹	3.93 (at 2.91Å)	Xtrriage
Refinement program	BUSTER 2.11.2	Depositor
R, R_{free}	0.173 , 0.236 0.184 , 0.247	Depositor DCC
R_{free} test set	1640 reflections (5.04%)	wwPDB-VP
Wilson B-factor (Å ²)	60.4	Xtrriage
Anisotropy	0.064	Xtrriage
Bulk solvent k_{sol} (e/Å ³), B_{sol} (Å ²)	0.30 , 63.9	EDS
L-test for twinning ²	$\langle L \rangle = 0.49$, $\langle L^2 \rangle = 0.32$	Xtrriage
Estimated twinning fraction	No twinning to report.	Xtrriage
F_o, F_c correlation	0.94	EDS
Total number of atoms	10357	wwPDB-VP
Average B, all atoms (Å ²)	67.0	wwPDB-VP

Xtrriage's analysis on translational NCS is as follows: *The largest off-origin peak in the Patterson function is 3.56% of the height of the origin peak. No significant pseudotranslation is detected.*

¹Intensities estimated from amplitudes.

²Theoretical values of $\langle |L| \rangle$, $\langle L^2 \rangle$ for acentric reflections are 0.5, 0.333 respectively for untwinned datasets, and 0.375, 0.2 for perfectly twinned datasets.

5 Model quality [i](#)

5.1 Standard geometry [i](#)

Bond lengths and bond angles in the following residue types are not validated in this section: BCT, CD, CL, RB6

The Z score for a bond length (or angle) is the number of standard deviations the observed value is removed from the expected value. A bond length (or angle) with $|Z| > 5$ is considered an outlier worth inspection. RMSZ is the root-mean-square of all Z scores of the bond lengths (or angles).

Mol	Chain	Bond lengths		Bond angles	
		RMSZ	# Z >5	RMSZ	# Z >5
1	A	0.87	0/5235	1.42	44/7035 (0.6%)
1	B	0.87	0/5141	1.45	41/6916 (0.6%)
All	All	0.87	0/10376	1.44	85/13951 (0.6%)

There are no bond length outliers.

The worst 5 of 85 bond angle outliers are listed below:

Mol	Chain	Res	Type	Atoms	Z	Observed(°)	Ideal(°)
1	A	277	VAL	N-CA-CB	8.52	120.71	111.00
1	B	331	LYS	CA-C-N	7.41	130.04	120.56
1	B	331	LYS	C-N-CA	7.41	130.04	120.56
1	A	26	LYS	CA-C-N	7.24	135.37	121.54
1	A	26	LYS	C-N-CA	7.24	135.37	121.54

There are no chirality outliers.

There are no planarity outliers.

5.2 Too-close contacts [i](#)

In the following table, the Non-H and H(model) columns list the number of non-hydrogen atoms and hydrogen atoms in the chain respectively. The H(added) column lists the number of hydrogen atoms added and optimized by MolProbity. The Clashes column lists the number of clashes within the asymmetric unit, whereas Symm-Clashes lists symmetry-related clashes.

Mol	Chain	Non-H	H(model)	H(added)	Clashes	Symm-Clashes
1	A	5152	0	5141	52	0
1	B	5058	0	5027	39	0
2	A	45	0	6	2	0
2	B	36	0	22	6	0

Continued on next page...

Continued from previous page...

Mol	Chain	Non-H	H(model)	H(added)	Clashes	Symm-Clashes
3	A	12	0	0	0	0
3	B	4	0	0	0	0
4	A	3	0	0	0	0
4	B	4	0	0	0	0
5	A	2	0	0	0	0
5	B	2	0	0	0	0
6	A	18	0	0	0	0
6	B	21	0	0	3	0
All	All	10357	0	10196	97	0

The all-atom clashscore is defined as the number of clashes found per 1000 atoms (including hydrogen atoms). The all-atom clashscore for this structure is 5.

The worst 5 of 97 close contacts within the same asymmetric unit are listed below, sorted by their clash magnitude.

Atom-1	Atom-2	Interatomic distance (Å)	Clash overlap (Å)
1:B:99:TYR:HB2	1:B:112:VAL:HG22	1.72	0.71
1:A:166:GLY:HA3	1:A:242:ASN:HB2	1.72	0.71
2:B:701:RB6:H14	2:B:701:RB6:CAR	2.21	0.70
1:B:627:MET:HE3	1:B:629:MET:HB2	1.74	0.69
2:B:701:RB6:H14	2:B:701:RB6:H9	1.76	0.68

There are no symmetry-related clashes.

5.3 Torsion angles [i](#)

5.3.1 Protein backbone [i](#)

In the following table, the Percentiles column shows the percent Ramachandran outliers of the chain as a percentile score with respect to all X-ray entries followed by that with respect to entries of similar resolution.

The Analysed column shows the number of residues for which the backbone conformation was analysed, and the total number of residues.

Mol	Chain	Analysed	Favoured	Allowed	Outliers	Percentiles	
1	A	635/646 (98%)	589 (93%)	40 (6%)	6 (1%)	14	41
1	B	624/646 (97%)	571 (92%)	43 (7%)	10 (2%)	7	27
All	All	1259/1292 (97%)	1160 (92%)	83 (7%)	16 (1%)	9	32

5 of 16 Ramachandran outliers are listed below:

Mol	Chain	Res	Type
1	A	27	ASP
1	A	605	MET
1	A	637	GLN
1	B	276	ALA
1	B	306	SER

5.3.2 Protein sidechains [i](#)

In the following table, the Percentiles column shows the percent sidechain outliers of the chain as a percentile score with respect to all X-ray entries followed by that with respect to entries of similar resolution.

The Analysed column shows the number of residues for which the sidechain conformation was analysed, and the total number of residues.

Mol	Chain	Analysed	Rotameric	Outliers	Percentiles	
1	A	573/576 (100%)	515 (90%)	58 (10%)	7	24
1	B	560/576 (97%)	493 (88%)	67 (12%)	5	16
All	All	1133/1152 (98%)	1008 (89%)	125 (11%)	6	20

5 of 125 residues with a non-rotameric sidechain are listed below:

Mol	Chain	Res	Type
1	A	662	LYS
1	B	549	LEU
1	B	188	LYS
1	B	545	ASN
1	B	603	LEU

Sometimes sidechains can be flipped to improve hydrogen bonding and reduce clashes. 5 of 29 such sidechains are listed below:

Mol	Chain	Res	Type
1	A	607	GLN
1	B	593	ASN
1	B	207	GLN
1	B	502	GLN
1	B	159	ASN

5.3.3 RNA [i](#)

There are no RNA molecules in this entry.

5.4 Non-standard residues in protein, DNA, RNA chains [i](#)

There are no non-standard protein/DNA/RNA residues in this entry.

5.5 Carbohydrates [i](#)

There are no oligosaccharides in this entry.

5.6 Ligand geometry [i](#)

Of 18 ligands modelled in this entry, 11 are monoatomic - leaving 7 for Mogul analysis.

In the following table, the Counts columns list the number of bonds (or angles) for which Mogul statistics could be retrieved, the number of bonds (or angles) that are observed in the model and the number of bonds (or angles) that are defined in the Chemical Component Dictionary. The Link column lists molecule types, if any, to which the group is linked. The Z score for a bond length (or angle) is the number of standard deviations the observed value is removed from the expected value. A bond length (or angle) with $|Z| > 2$ is considered an outlier worth inspection. RMSZ is the root-mean-square of all Z scores of the bond lengths (or angles).

Mol	Type	Chain	Res	Link	Bond lengths			Bond angles		
					Counts	RMSZ	# Z > 2	Counts	RMSZ	# Z > 2
3	BCT	A	704	-	3,3,3	0.52	0	2,3,3	0.78	0
3	BCT	A	703	-	3,3,3	0.53	0	2,3,3	0.67	0
2	RB6	B	701	1	34,39,39	2.75	9 (26%)	34,55,55	3.66	17 (50%)
3	BCT	A	702	-	3,3,3	0.52	0	2,3,3	0.23	0
2	RB6	A	701[B]	-	34,39,39	2.84	7 (20%)	34,55,55	3.67	10 (29%)
2	RB6	A	701[A]	-	34,39,39	2.85	7 (20%)	34,55,55	3.95	12 (35%)
3	BCT	B	702	-	3,3,3	0.51	0	2,3,3	0.68	0

In the following table, the Chirals column lists the number of chiral outliers, the number of chiral centers analysed, the number of these observed in the model and the number defined in the Chemical Component Dictionary. Similar counts are reported in the Torsion and Rings columns. '-' means no outliers of that kind were identified.

Mol	Type	Chain	Res	Link	Chirals	Torsions	Rings
2	RB6	A	701[A]	-	-	11/24/65/65	0/3/4/4
2	RB6	B	701	1	-	6/24/65/65	0/3/4/4

Continued on next page...

Continued from previous page...

Mol	Type	Chain	Res	Link	Chirals	Torsions	Rings
2	RB6	A	701[B]	-	-	11/24/65/65	0/3/4/4

The worst 5 of 23 bond length outliers are listed below:

Mol	Chain	Res	Type	Atoms	Z	Observed(Å)	Ideal(Å)
2	A	701[A]	RB6	CAF-CAG	-10.81	1.33	1.51
2	A	701[B]	RB6	CAF-CAG	-10.81	1.33	1.51
2	B	701	RB6	CAF-CAG	-9.60	1.35	1.51
2	B	701	RB6	CAQ-CAG	7.81	1.49	1.33
2	A	701[A]	RB6	CAQ-CAG	7.47	1.49	1.33

The worst 5 of 39 bond angle outliers are listed below:

Mol	Chain	Res	Type	Atoms	Z	Observed(°)	Ideal(°)
2	A	701[A]	RB6	CAP-CAQ-CAG	-11.94	103.52	112.33
2	A	701[B]	RB6	CAP-CAQ-CAG	-11.94	103.52	112.33
2	B	701	RB6	CAP-NAJ-CAH	10.05	119.81	112.95
2	B	701	RB6	CAP-CAQ-CAG	-10.02	104.93	112.33
2	A	701[A]	RB6	CAP-NAJ-CAH	9.42	119.39	112.95

There are no chirality outliers.

5 of 28 torsion outliers are listed below:

Mol	Chain	Res	Type	Atoms
2	A	701[A]	RB6	NAC-CAD-CBH-OBI
2	A	701[A]	RB6	CAR-CAE-CAF-CAG
2	A	701[A]	RB6	CAD-CAE-CAF-CAG
2	A	701[A]	RB6	CAO-CAK-NAJ-CAH
2	A	701[A]	RB6	CAL-CAK-NAJ-CAP

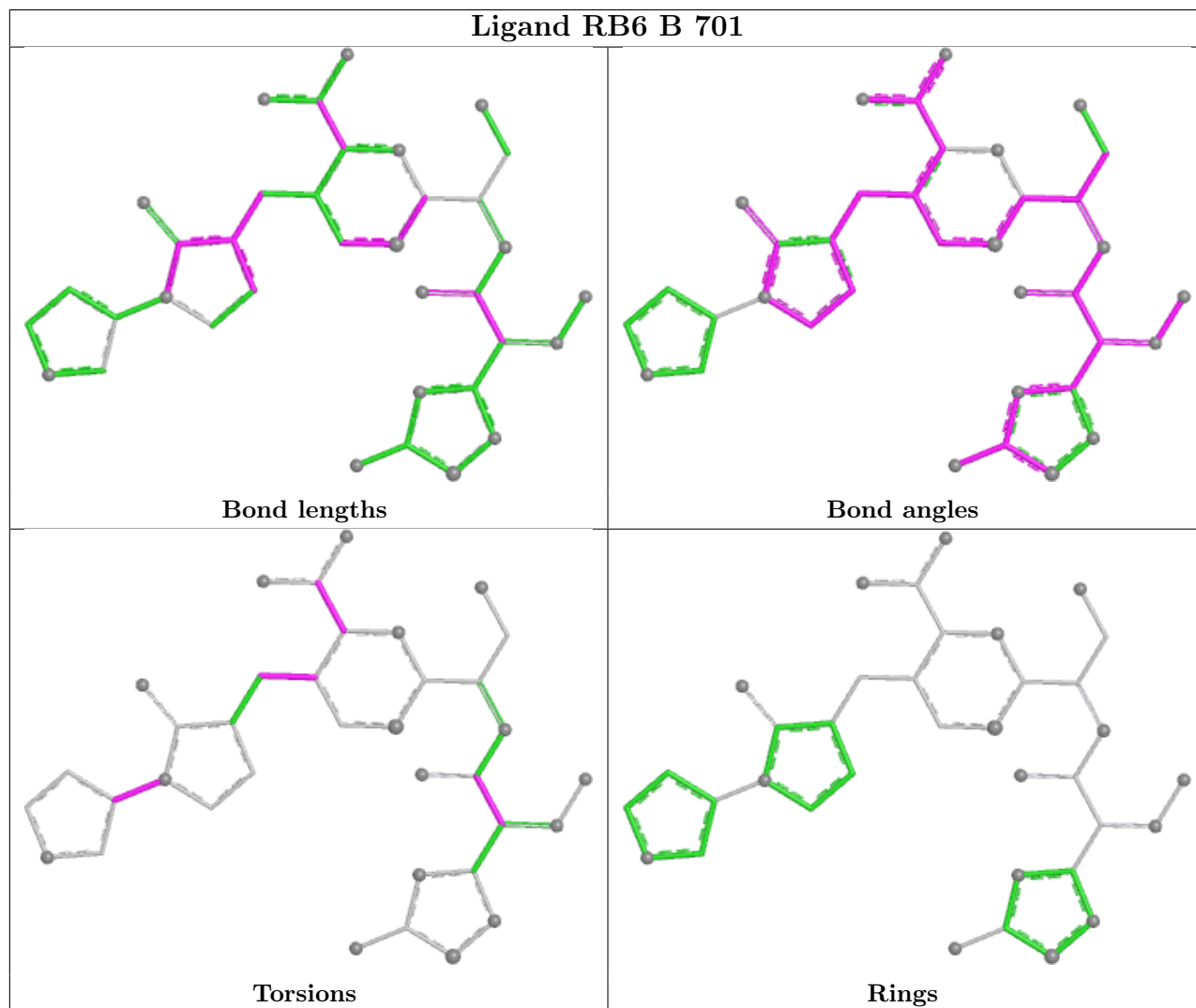
There are no ring outliers.

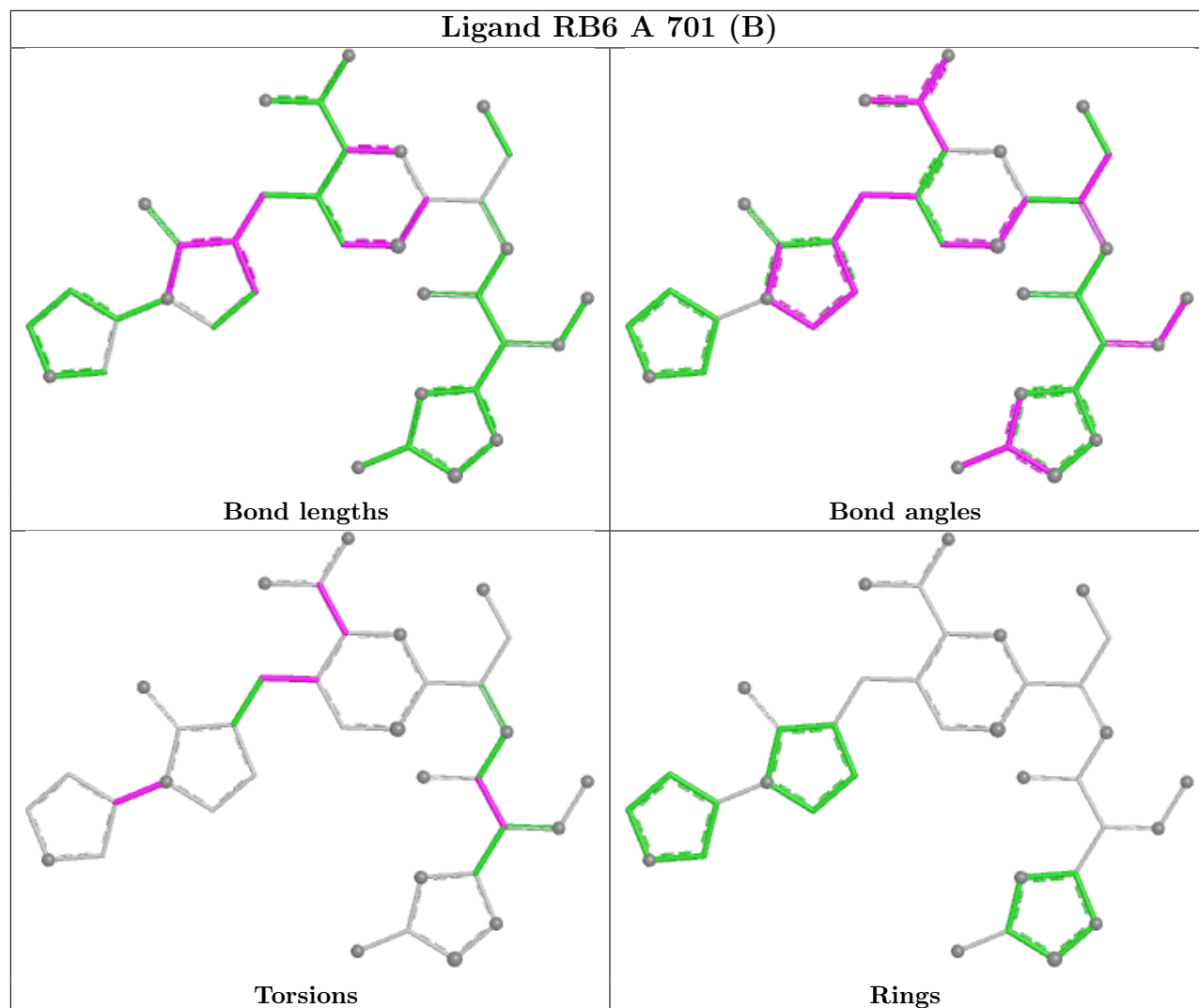
3 monomers are involved in 8 short contacts:

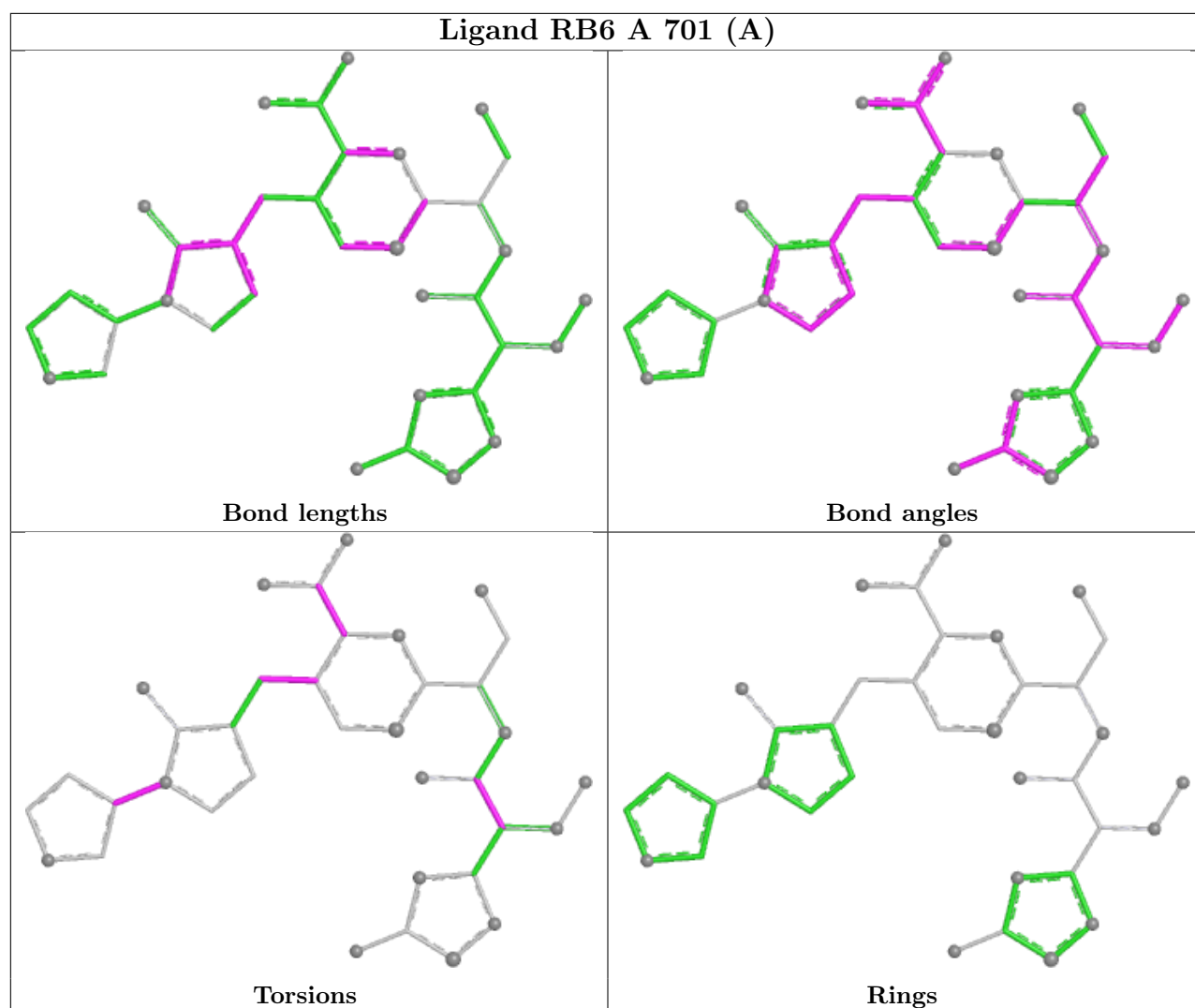
Mol	Chain	Res	Type	Clashes	Symm-Clashes
2	B	701	RB6	6	0
2	A	701[B]	RB6	1	0
2	A	701[A]	RB6	1	0

The following is a two-dimensional graphical depiction of Mogul quality analysis of bond lengths, bond angles, torsion angles, and ring geometry for all instances of the Ligand of Interest. In addition, ligands with molecular weight > 250 and outliers as shown on the validation Tables will

also be included. For torsion angles, if less than 5% of the Mogul distribution of torsion angles is within 10 degrees of the torsion angle in question, then that torsion angle is considered an outlier. Any bond that is central to one or more torsion angles identified as an outlier by Mogul will be highlighted in the graph. For rings, the root-mean-square deviation (RMSD) between the ring in question and similar rings identified by Mogul is calculated over all ring torsion angles. If the average RMSD is greater than 60 degrees and the minimal RMSD between the ring in question and any Mogul-identified rings is also greater than 60 degrees, then that ring is considered an outlier. The outliers are highlighted in purple. The color gray indicates Mogul did not find sufficient equivalents in the CSD to analyse the geometry.







5.7 Other polymers [i](#)

There are no such residues in this entry.

5.8 Polymer linkage issues [i](#)

There are no chain breaks in this entry.

6 Fit of model and data [i](#)

6.1 Protein, DNA and RNA chains [i](#)

In the following table, the column labelled ‘#RSRZ > 2’ contains the number (and percentage) of RSRZ outliers, followed by percent RSRZ outliers for the chain as percentile scores relative to all X-ray entries and entries of similar resolution. The OWAB column contains the minimum, median, 95th percentile and maximum values of the occupancy-weighted average B-factor per residue. The column labelled ‘Q < 0.9’ lists the number of (and percentage) of residues with an average occupancy less than 0.9.

Mol	Chain	Analysed	<RSRZ>	#RSRZ>2	OWAB(Å ²)	Q<0.9
1	A	641/646 (99%)	-0.29	6 (0%) 81 75	26, 59, 106, 165	0
1	B	632/646 (97%)	-0.11	13 (2%) 63 54	29, 69, 109, 143	0
All	All	1273/1292 (98%)	-0.20	19 (1%) 72 64	26, 63, 107, 165	0

The worst 5 of 19 RSRZ outliers are listed below:

Mol	Chain	Res	Type	RSRZ
1	B	636	VAL	4.9
1	B	612	ARG	3.6
1	B	503	ILE	3.5
1	B	413	GLY	3.1
1	A	604	LYS	3.0

6.2 Non-standard residues in protein, DNA, RNA chains [i](#)

There are no non-standard protein/DNA/RNA residues in this entry.

6.3 Carbohydrates [i](#)

There are no oligosaccharides in this entry.

6.4 Ligands [i](#)

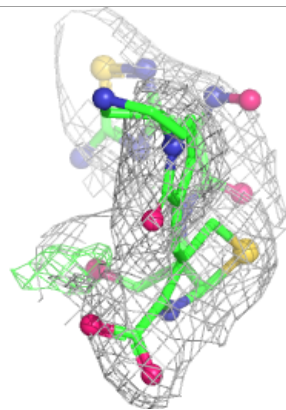
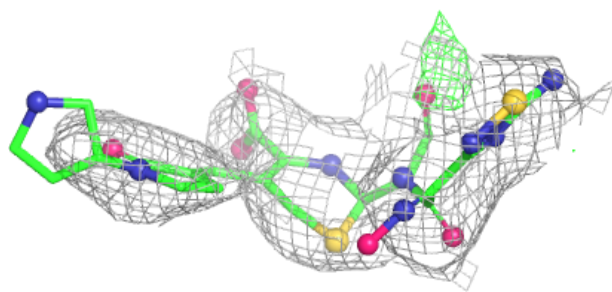
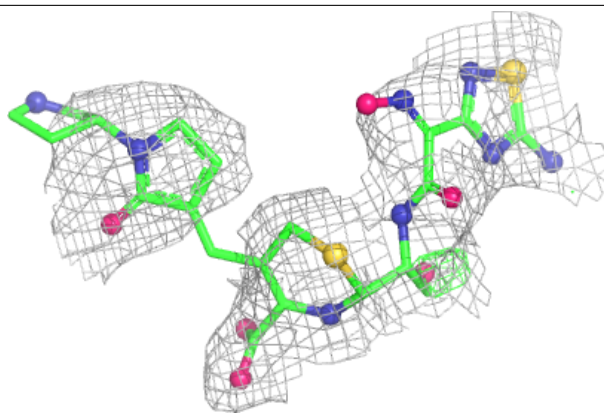
In the following table, the Atoms column lists the number of modelled atoms in the group and the number defined in the chemical component dictionary. The B-factors column lists the minimum, median, 95th percentile and maximum values of B factors of atoms in the group. The column labelled ‘Q < 0.9’ lists the number of atoms with occupancy less than 0.9.

Mol	Type	Chain	Res	Atoms	RSCC	RSR	B-factors(\AA^2)	Q<0.9
3	BCT	B	702	4/4	0.78	0.08	102,103,104,104	0
2	RB6	B	701	36/36	0.81	0.12	96,112,123,125	0
3	BCT	A	702	4/4	0.83	0.20	69,76,77,79	0
3	BCT	A	703	4/4	0.84	0.13	68,69,70,72	0
3	BCT	A	704	4/4	0.86	0.11	70,73,73,75	0
4	CD	A	706	1/1	0.90	0.08	154,154,154,154	0
2	RB6	A	701[A]	36/36	0.93	0.08	55,68,91,93	9
2	RB6	A	701[B]	36/36	0.93	0.08	55,78,91,93	9
4	CD	B	705	1/1	0.94	0.07	142,142,142,142	0
4	CD	B	706	1/1	0.96	0.06	121,121,121,121	0
5	CL	A	708	1/1	0.99	0.06	41,41,41,41	0
5	CL	A	709	1/1	0.99	0.04	47,47,47,47	0
5	CL	B	707	1/1	0.99	0.04	52,52,52,52	0
4	CD	A	707	1/1	1.00	0.03	60,60,60,60	0
4	CD	B	703	1/1	1.00	0.03	41,41,41,41	0
4	CD	B	704	1/1	1.00	0.03	46,46,46,46	0
4	CD	A	705	1/1	1.00	0.04	43,43,43,43	0
5	CL	B	708	1/1	1.00	0.04	44,44,44,44	0

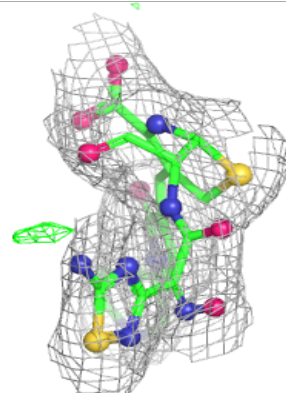
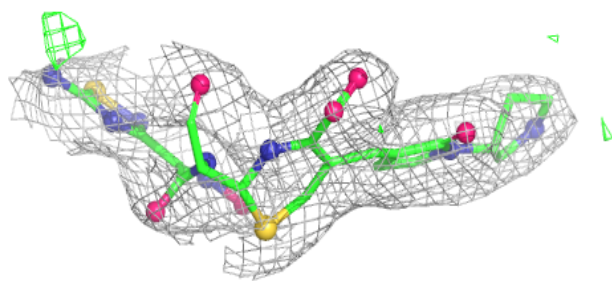
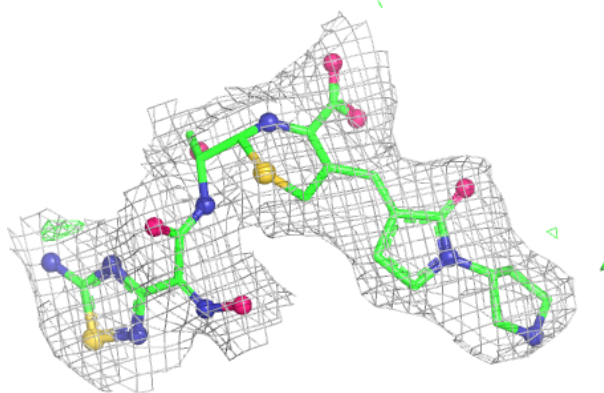
The following is a graphical depiction of the model fit to experimental electron density of all instances of the Ligand of Interest. In addition, ligands with molecular weight > 250 and outliers as shown on the geometry validation Tables will also be included. Each fit is shown from different orientation to approximate a three-dimensional view.

Electron density around RB6 B 701:

$2mF_o-DF_c$ (at 0.7 rmsd) in gray
 mF_o-DF_c (at 3 rmsd) in purple (negative)
and green (positive)

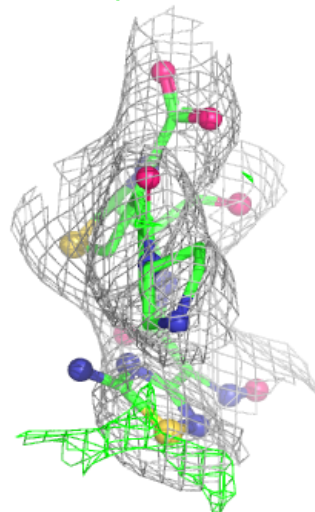
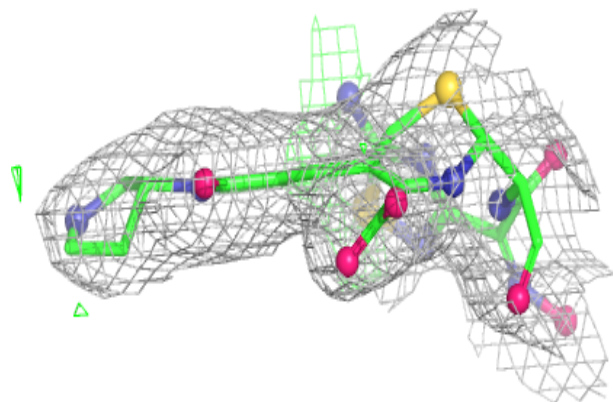
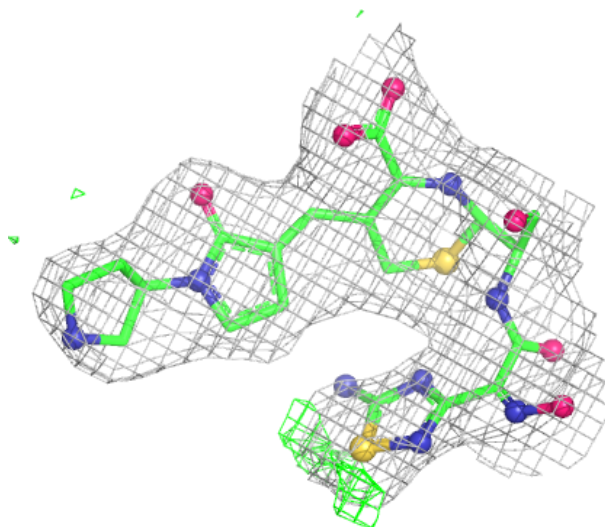
**Electron density around RB6 A 701 (A):**

$2mF_o-DF_c$ (at 0.7 rmsd) in gray
 mF_o-DF_c (at 3 rmsd) in purple (negative)
and green (positive)



Electron density around RB6 A 701 (B):

$2mF_o-DF_c$ (at 0.7 rmsd) in gray
 mF_o-DF_c (at 3 rmsd) in purple (negative)
and green (positive)



6.5 Other polymers [i](#)

There are no such residues in this entry.