



# wwPDB X-ray Structure Validation Summary Report ⓘ

Mar 18, 2026 – 02:28 AM UTC

PDB ID : 3DP6 / pdb\_00003dp6  
Title : Crystal structure of the binding domain of the AMPA subunit GluR2 bound to glutamate  
Authors : Ahmed, A.H.; Wang, Q.; Sondermann, H.; Oswald, R.E.  
Deposited on : 2008-07-07  
Resolution : 1.55 Å(reported)

This is a wwPDB X-ray Structure Validation Summary Report for a publicly released PDB entry.

We welcome your comments at [validation@mail.wwpdb.org](mailto:validation@mail.wwpdb.org)

A user guide is available at

<https://www.wwpdb.org/validation/2017/XrayValidationReportHelp>

with specific help available everywhere you see the ⓘ symbol.

The types of validation reports are described at

<http://www.wwpdb.org/validation/2017/FAQs#types>.

---

The following versions of software and data (see [references ⓘ](#)) were used in the production of this report:

MolProbity : 4-5-2 with Phenix2.0  
Mogul : 2022.3.0, CSD as543be (2022)  
Xtriage (Phenix) : 2.0  
EDS : 3.0  
Percentile statistics : 20250101.v01 (using entries in the PDB archive January 1st 2025)  
CCP4 : 9.0.010 (Gargrove)  
Density-Fitness : 1.0.12  
Ideal geometry (proteins) : Engh & Huber (2001)  
Ideal geometry (DNA, RNA) : Parkinson et al. (1996)  
Validation Pipeline (wwPDB-VP) : 2.49

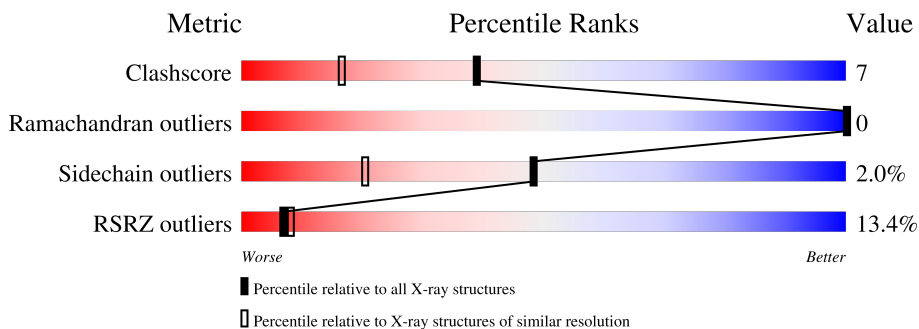
# 1 Overall quality at a glance

The following experimental techniques were used to determine the structure:

*X-RAY DIFFRACTION*

The reported resolution of this entry is 1.55 Å.

Percentile scores (ranging between 0-100) for global validation metrics of the entry are shown in the following graphic. The table shows the number of entries on which the scores are based.



Metric	Whole archive (#Entries)	Similar resolution (#Entries, resolution range(Å))
Clashscore	190562	2189 (1.56-1.56)
Ramachandran outliers	187476	2153 (1.56-1.56)
Sidechain outliers	187428	2150 (1.56-1.56)
RSRZ outliers	180081	2146 (1.56-1.56)

The table below summarises the geometric issues observed across the polymeric chains and their fit to the electron density. The red, orange, yellow and green segments of the lower bar indicate the fraction of residues that contain outliers for  $\geq 3$ , 2, 1 and 0 types of geometric quality criteria respectively. A grey segment represents the fraction of residues that are not modelled. The numeric value for each fraction is indicated below the corresponding segment, with a dot representing fractions  $\leq 5\%$ . The upper red bar (where present) indicates the fraction of residues that have poor fit to the electron density. The numeric value is given above the bar.

Mol	Chain	Length	Quality of chain
1	A	279	
1	B	279	
1	C	279	

The following table lists non-polymeric compounds, carbohydrate monomers and non-standard residues in protein, DNA, RNA chains that are outliers for geometric or electron-density-fit criteria:

Mol	Type	Chain	Res	Chirality	Geometry	Clashes	Electron density
2	ZN	B	302	-	-	-	X
2	ZN	C	301	-	-	-	X

## 2 Entry composition i

There are 4 unique types of molecules in this entry. The entry contains 6763 atoms, of which 0 are hydrogens and 0 are deuteriums.

In the tables below, the ZeroOcc column contains the number of atoms modelled with zero occupancy, the AltConf column contains the number of residues with at least one atom in alternate conformation and the Trace column contains the number of residues modelled with at most 2 atoms.

- Molecule 1 is a protein called Glutamate receptor 2.

Mol	Chain	Residues	Atoms					ZeroOcc	AltConf	Trace
			Total	C	N	O	S			
1	A	258	2018	1286	336	382	14	0	0	0
1	B	258	2018	1286	336	382	14	0	0	0
1	C	258	2018	1286	336	382	14	0	0	0

There are 66 discrepancies between the modelled and reference sequences:

Chain	Residue	Modelled	Actual	Comment	Reference
A	-15	LEU	-	expression tag	UNP P19491
A	-14	VAL	-	expression tag	UNP P19491
A	-13	PRO	-	expression tag	UNP P19491
A	-12	ARG	-	expression tag	UNP P19491
A	-11	GLY	-	expression tag	UNP P19491
A	-10	SER	-	expression tag	UNP P19491
A	-9	ALA	-	expression tag	UNP P19491
A	-8	MET	-	expression tag	UNP P19491
A	-7	GLY	-	expression tag	UNP P19491
A	-6	SER	-	expression tag	UNP P19491
A	-5	GLY	-	expression tag	UNP P19491
A	-4	ASN	-	expression tag	UNP P19491
A	-3	ASP	-	expression tag	UNP P19491
A	-2	THR	-	expression tag	UNP P19491
A	-1	SER	-	expression tag	UNP P19491
A	0	ARG	-	expression tag	UNP P19491
A	1	GLY	-	expression tag	UNP P19491
A	2	ALA	-	expression tag	UNP P19491
A	118	GLY	-	linker	UNP P19491
A	119	THR	-	linker	UNP P19491
A	262	GLY	-	expression tag	UNP P19491
A	263	SER	-	expression tag	UNP P19491
B	-15	LEU	-	expression tag	UNP P19491

*Continued on next page...*

*Continued from previous page...*

Chain	Residue	Modelled	Actual	Comment	Reference
B	-14	VAL	-	expression tag	UNP P19491
B	-13	PRO	-	expression tag	UNP P19491
B	-12	ARG	-	expression tag	UNP P19491
B	-11	GLY	-	expression tag	UNP P19491
B	-10	SER	-	expression tag	UNP P19491
B	-9	ALA	-	expression tag	UNP P19491
B	-8	MET	-	expression tag	UNP P19491
B	-7	GLY	-	expression tag	UNP P19491
B	-6	SER	-	expression tag	UNP P19491
B	-5	GLY	-	expression tag	UNP P19491
B	-4	ASN	-	expression tag	UNP P19491
B	-3	ASP	-	expression tag	UNP P19491
B	-2	THR	-	expression tag	UNP P19491
B	-1	SER	-	expression tag	UNP P19491
B	0	ARG	-	expression tag	UNP P19491
B	1	GLY	-	expression tag	UNP P19491
B	2	ALA	-	expression tag	UNP P19491
B	118	GLY	-	linker	UNP P19491
B	119	THR	-	linker	UNP P19491
B	262	GLY	-	expression tag	UNP P19491
B	263	SER	-	expression tag	UNP P19491
C	-15	LEU	-	expression tag	UNP P19491
C	-14	VAL	-	expression tag	UNP P19491
C	-13	PRO	-	expression tag	UNP P19491
C	-12	ARG	-	expression tag	UNP P19491
C	-11	GLY	-	expression tag	UNP P19491
C	-10	SER	-	expression tag	UNP P19491
C	-9	ALA	-	expression tag	UNP P19491
C	-8	MET	-	expression tag	UNP P19491
C	-7	GLY	-	expression tag	UNP P19491
C	-6	SER	-	expression tag	UNP P19491
C	-5	GLY	-	expression tag	UNP P19491
C	-4	ASN	-	expression tag	UNP P19491
C	-3	ASP	-	expression tag	UNP P19491
C	-2	THR	-	expression tag	UNP P19491
C	-1	SER	-	expression tag	UNP P19491
C	0	ARG	-	expression tag	UNP P19491
C	1	GLY	-	expression tag	UNP P19491
C	2	ALA	-	expression tag	UNP P19491
C	118	GLY	-	linker	UNP P19491
C	119	THR	-	linker	UNP P19491
C	262	GLY	-	expression tag	UNP P19491

*Continued on next page...*

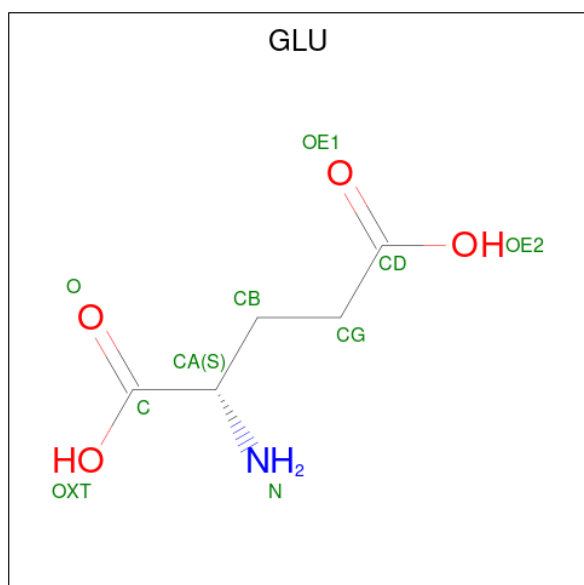
Continued from previous page...

Chain	Residue	Modelled	Actual	Comment	Reference
C	263	SER	-	expression tag	UNP P19491

- Molecule 2 is ZINC ION (CCD ID: ZN) (formula: Zn).

Mol	Chain	Residues	Atoms	ZeroOcc	AltConf
2	A	2	Total Zn 2 2	0	0
2	B	2	Total Zn 2 2	0	0
2	C	2	Total Zn 2 2	0	0

- Molecule 3 is GLUTAMIC ACID (CCD ID: GLU) (formula: C<sub>5</sub>H<sub>9</sub>NO<sub>4</sub>).



Mol	Chain	Residues	Atoms	ZeroOcc	AltConf
3	A	1	Total C N O 10 5 1 4	0	0
3	B	1	Total C N O 10 5 1 4	0	0
3	C	1	Total C N O 10 5 1 4	0	0

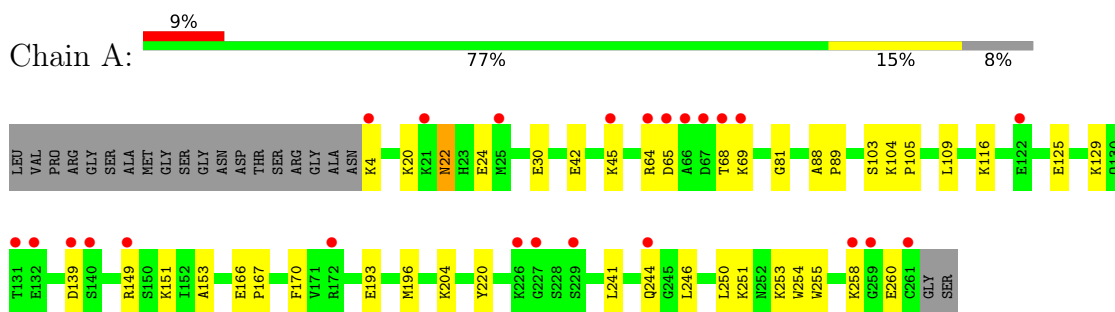
- Molecule 4 is water.

<b>Mol</b>	<b>Chain</b>	<b>Residues</b>	<b>Atoms</b>		<b>ZeroOcc</b>	<b>AltConf</b>
4	A	225	Total 225	O 225	0	0
4	B	185	Total 185	O 185	0	0
4	C	263	Total 263	O 263	0	0

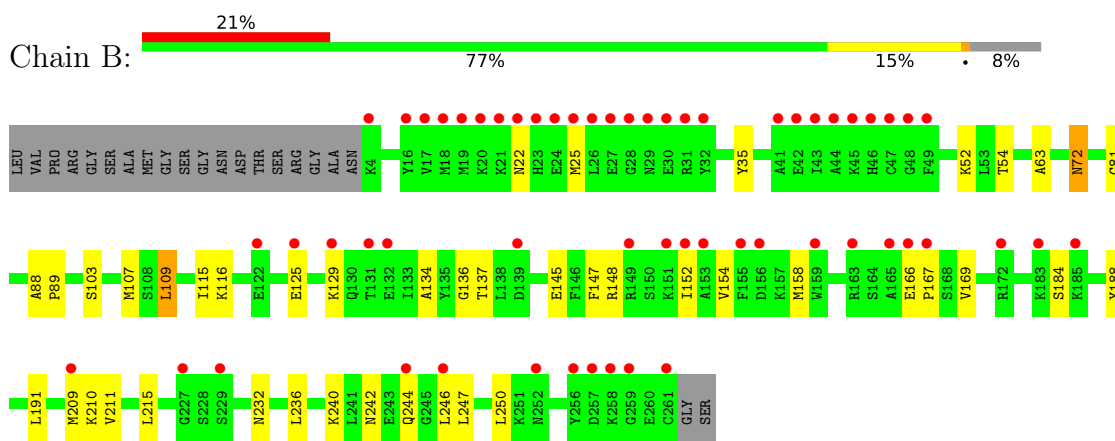
### 3 Residue-property plots [i](#)

These plots are drawn for all protein, RNA, DNA and oligosaccharide chains in the entry. The first graphic for a chain summarises the proportions of the various outlier classes displayed in the second graphic. The second graphic shows the sequence view annotated by issues in geometry and electron density. Residues are color-coded according to the number of geometric quality criteria for which they contain at least one outlier: green = 0, yellow = 1, orange = 2 and red = 3 or more. A red dot above a residue indicates a poor fit to the electron density ( $RSRZ > 2$ ). Stretches of 2 or more consecutive residues without any outlier are shown as a green connector. Residues present in the sample, but not in the model, are shown in grey.

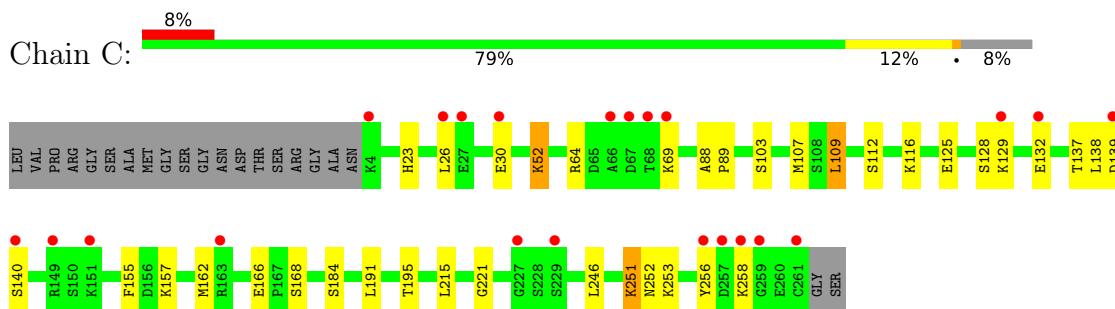
- Molecule 1: Glutamate receptor 2



- Molecule 1: Glutamate receptor 2



- Molecule 1: Glutamate receptor 2



## 4 Data and refinement statistics

Property	Value	Source
Space group	P 21 21 2	Depositor
Cell constants a, b, c, $\alpha$ , $\beta$ , $\gamma$	113.84Å 163.18Å 47.32Å 90.00° 90.00° 90.00°	Depositor
Resolution (Å)	50.00 – 1.55 50.00 – 1.55	Depositor EDS
% Data completeness (in resolution range)	93.1 (50.00-1.55) 93.3 (50.00-1.55)	Depositor EDS
$R_{merge}$	0.10	Depositor
$R_{sym}$	0.10	Depositor
$\langle I/\sigma(I) \rangle$ <sup>1</sup>	1.90 (at 1.55Å)	Xtrriage
Refinement program	CNS	Depositor
R, $R_{free}$	0.222 , 0.244 0.233 , (Not available)	Depositor DCC
$R_{free}$ test set	No test flags present.	wwPDB-VP
Wilson B-factor (Å <sup>2</sup> )	13.3	Xtrriage
Anisotropy	0.035	Xtrriage
Bulk solvent $k_{sol}$ (e/Å <sup>3</sup> ), $B_{sol}$ (Å <sup>2</sup> )	0.38 , 39.0	EDS
L-test for twinning <sup>2</sup>	$\langle  L  \rangle = 0.50$ , $\langle L^2 \rangle = 0.33$	Xtrriage
Estimated twinning fraction	No twinning to report.	Xtrriage
$F_o, F_c$ correlation	0.93	EDS
Total number of atoms	6763	wwPDB-VP
Average B, all atoms (Å <sup>2</sup> )	16.0	wwPDB-VP

Xtrriage's analysis on translational NCS is as follows: *The largest off-origin peak in the Patterson function is 14.47% of the height of the origin peak. No significant pseudotranslation is detected.*

<sup>1</sup>Intensities estimated from amplitudes.

<sup>2</sup>Theoretical values of  $\langle |L| \rangle$ ,  $\langle L^2 \rangle$  for acentric reflections are 0.5, 0.333 respectively for untwinned datasets, and 0.375, 0.2 for perfectly twinned datasets.

## 5 Model quality [i](#)

### 5.1 Standard geometry [i](#)

Bond lengths and bond angles in the following residue types are not validated in this section:  
ZN

The Z score for a bond length (or angle) is the number of standard deviations the observed value is removed from the expected value. A bond length (or angle) with  $|Z| > 5$  is considered an outlier worth inspection. RMSZ is the root-mean-square of all Z scores of the bond lengths (or angles).

Mol	Chain	Bond lengths		Bond angles	
		RMSZ	# Z  >5	RMSZ	# Z  >5
1	A	0.33	0/2054	0.84	3/2762 (0.1%)
1	B	0.33	0/2054	0.82	2/2762 (0.1%)
1	C	0.35	0/2054	0.83	3/2762 (0.1%)
All	All	0.34	0/6162	0.83	8/8286 (0.1%)

There are no bond length outliers.

The worst 5 of 8 bond angle outliers are listed below:

Mol	Chain	Res	Type	Atoms	Z	Observed(°)	Ideal(°)
1	A	116	LYS	N-CA-C	-6.99	99.16	110.20
1	C	116	LYS	N-CA-C	-6.41	100.08	110.20
1	B	116	LYS	N-CA-C	-6.25	100.32	110.20
1	A	104	LYS	N-CA-C	-5.33	102.52	110.20
1	A	103	SER	N-CA-C	-5.25	103.76	110.53

There are no chirality outliers.

There are no planarity outliers.

### 5.2 Too-close contacts [i](#)

In the following table, the Non-H and H(model) columns list the number of non-hydrogen atoms and hydrogen atoms in the chain respectively. The H(added) column lists the number of hydrogen atoms added and optimized by MolProbity. The Clashes column lists the number of clashes within the asymmetric unit, whereas Symm-Clashes lists symmetry-related clashes.

Mol	Chain	Non-H	H(model)	H(added)	Clashes	Symm-Clashes
1	A	2018	0	2050	29	0
1	B	2018	0	2050	32	0
1	C	2018	0	2050	23	0

*Continued on next page...*

*Continued from previous page...*

Mol	Chain	Non-H	H(model)	H(added)	Clashes	Symm-Clashes
2	A	2	0	0	0	0
2	B	2	0	0	0	0
2	C	2	0	0	0	0
3	A	10	0	5	0	0
3	B	10	0	5	0	0
3	C	10	0	5	1	0
4	A	225	0	0	10	0
4	B	185	0	0	5	0
4	C	263	0	0	6	0
All	All	6763	0	6165	83	0

The all-atom clashscore is defined as the number of clashes found per 1000 atoms (including hydrogen atoms). The all-atom clashscore for this structure is 7.

The worst 5 of 83 close contacts within the same asymmetric unit are listed below, sorted by their clash magnitude.

Atom-1	Atom-2	Interatomic distance (Å)	Clash overlap (Å)
1:A:253:LYS:HE2	4:A:436:HOH:O	1.65	0.95
1:A:22:ASN:H	1:A:22:ASN:HD22	1.21	0.84
1:B:240:LYS:O	1:B:244:GLN:HG2	1.80	0.81
1:C:221:GLY:HA2	4:C:394:HOH:O	1.80	0.80
1:A:193:GLU:HB2	4:A:437:HOH:O	1.81	0.79

There are no symmetry-related clashes.

## 5.3 Torsion angles [i](#)

### 5.3.1 Protein backbone [i](#)

In the following table, the Percentiles column shows the percent Ramachandran outliers of the chain as a percentile score with respect to all X-ray entries followed by that with respect to entries of similar resolution.

The Analysed column shows the number of residues for which the backbone conformation was analysed, and the total number of residues.

Mol	Chain	Analysed	Favoured	Allowed	Outliers	Percentiles
1	A	256/279 (92%)	252 (98%)	4 (2%)	0	100 100
1	B	256/279 (92%)	250 (98%)	6 (2%)	0	100 100

*Continued on next page...*

Continued from previous page...

Mol	Chain	Analysed	Favoured	Allowed	Outliers	Percentiles	
1	C	256/279 (92%)	249 (97%)	7 (3%)	0	100	100
All	All	768/837 (92%)	751 (98%)	17 (2%)	0	100	100

There are no Ramachandran outliers to report.

### 5.3.2 Protein sidechains [i](#)

In the following table, the Percentiles column shows the percent sidechain outliers of the chain as a percentile score with respect to all X-ray entries followed by that with respect to entries of similar resolution.

The Analysed column shows the number of residues for which the sidechain conformation was analysed, and the total number of residues.

Mol	Chain	Analysed	Rotameric	Outliers	Percentiles	
1	A	217/231 (94%)	213 (98%)	4 (2%)	51	24
1	B	217/231 (94%)	213 (98%)	4 (2%)	51	24
1	C	217/231 (94%)	213 (98%)	4 (2%)	51	24
All	All	651/693 (94%)	639 (98%)	12 (2%)	48	24

5 of 12 residues with a non-rotameric sidechain are listed below:

Mol	Chain	Res	Type
1	B	250	LEU
1	C	52	LYS
1	C	251	LYS
1	C	109	LEU
1	A	250	LEU

Sometimes sidechains can be flipped to improve hydrogen bonding and reduce clashes. 5 of 6 such sidechains are listed below:

Mol	Chain	Res	Type
1	B	232	ASN
1	B	252	ASN
1	C	214	ASN
1	A	244	GLN
1	A	22	ASN

### 5.3.3 RNA [i](#)

There are no RNA molecules in this entry.

## 5.4 Non-standard residues in protein, DNA, RNA chains [i](#)

There are no non-standard protein/DNA/RNA residues in this entry.

## 5.5 Carbohydrates [i](#)

There are no oligosaccharides in this entry.

## 5.6 Ligand geometry [i](#)

Of 9 ligands modelled in this entry, 6 are monoatomic - leaving 3 for Mogul analysis.

In the following table, the Counts columns list the number of bonds (or angles) for which Mogul statistics could be retrieved, the number of bonds (or angles) that are observed in the model and the number of bonds (or angles) that are defined in the Chemical Component Dictionary. The Link column lists molecule types, if any, to which the group is linked. The Z score for a bond length (or angle) is the number of standard deviations the observed value is removed from the expected value. A bond length (or angle) with  $|Z| > 2$  is considered an outlier worth inspection. RMSZ is the root-mean-square of all Z scores of the bond lengths (or angles).

Mol	Type	Chain	Res	Link	Bond lengths			Bond angles		
					Counts	RMSZ	$\# Z  > 2$	Counts	RMSZ	$\# Z  > 2$
3	GLU	C	374	-	8,9,9	1.01	0	8,11,11	0.64	0
3	GLU	A	374	-	8,9,9	1.00	0	8,11,11	0.79	0
3	GLU	B	374	-	8,9,9	1.03	0	8,11,11	0.79	0

In the following table, the Chirals column lists the number of chiral outliers, the number of chiral centers analysed, the number of these observed in the model and the number defined in the Chemical Component Dictionary. Similar counts are reported in the Torsion and Rings columns. '-' means no outliers of that kind were identified.

Mol	Type	Chain	Res	Link	Chirals	Torsions	Rings
3	GLU	C	374	-	-	5/9/9/9	-
3	GLU	A	374	-	-	0/9/9/9	-
3	GLU	B	374	-	-	2/9/9/9	-

There are no bond length outliers.

There are no bond angle outliers.

There are no chirality outliers.

5 of 7 torsion outliers are listed below:

Mol	Chain	Res	Type	Atoms
3	C	374	GLU	CA-CB-CG-CD
3	C	374	GLU	O-C-CA-CB
3	C	374	GLU	OXT-C-CA-CB
3	C	374	GLU	OE2-CD-CG-CB
3	C	374	GLU	OE1-CD-CG-CB

There are no ring outliers.

1 monomer is involved in 1 short contact:

Mol	Chain	Res	Type	Clashes	Symm-Clashes
3	C	374	GLU	1	0

## 5.7 Other polymers [i](#)

There are no such residues in this entry.

## 5.8 Polymer linkage issues [i](#)

There are no chain breaks in this entry.

## 6 Fit of model and data [i](#)

### 6.1 Protein, DNA and RNA chains [i](#)

In the following table, the column labelled ‘#RSRZ > 2’ contains the number (and percentage) of RSRZ outliers, followed by percent RSRZ outliers for the chain as percentile scores relative to all X-ray entries and entries of similar resolution. The OWAB column contains the minimum, median, 95<sup>th</sup> percentile and maximum values of the occupancy-weighted average B-factor per residue. The column labelled ‘Q < 0.9’ lists the number of (and percentage) of residues with an average occupancy less than 0.9.

Mol	Chain	Analysed	<RSRZ>	#RSRZ>2	OWAB(Å <sup>2</sup> )	Q<0.9
1	A	258/279 (92%)	0.71	24 (9%) 14 16	9, 14, 20, 24	0
1	B	258/279 (92%)	1.20	58 (22%) 2 2	9, 16, 30, 55	0
1	C	258/279 (92%)	0.66	22 (8%) 16 19	7, 13, 20, 23	0
All	All	774/837 (92%)	0.86	104 (13%) 7 8	7, 14, 21, 55	0

The worst 5 of 104 RSRZ outliers are listed below:

Mol	Chain	Res	Type	RSRZ
1	C	258	LYS	6.0
1	B	26	LEU	5.7
1	B	258	LYS	5.6
1	C	256	TYR	5.6
1	B	21	LYS	5.3

### 6.2 Non-standard residues in protein, DNA, RNA chains [i](#)

There are no non-standard protein/DNA/RNA residues in this entry.

### 6.3 Carbohydrates [i](#)

There are no oligosaccharides in this entry.

### 6.4 Ligands [i](#)

In the following table, the Atoms column lists the number of modelled atoms in the group and the number defined in the chemical component dictionary. The B-factors column lists the minimum, median, 95<sup>th</sup> percentile and maximum values of B factors of atoms in the group. The column labelled ‘Q < 0.9’ lists the number of atoms with occupancy less than 0.9.

Mol	Type	Chain	Res	Atoms	RSCC	RSR	B-factors( $\text{\AA}^2$ )	Q<0.9
2	ZN	B	302	1/1	0.65	0.45	147,147,147,147	0
2	ZN	C	301	1/1	0.77	0.45	77,77,77,77	0
2	ZN	B	301	1/1	0.83	0.40	79,79,79,79	0
2	ZN	A	301	1/1	0.86	0.38	63,63,63,63	0
3	GLU	C	374	10/10	0.89	0.13	6,10,21,25	0
3	GLU	B	374	10/10	0.96	0.06	8,9,10,12	0
3	GLU	A	374	10/10	0.96	0.06	9,9,11,11	0
2	ZN	C	302	1/1	0.98	0.20	2,2,2,2	0
2	ZN	A	302	1/1	0.99	0.28	39,39,39,39	0

## 6.5 Other polymers [i](#)

There are no such residues in this entry.