



wwPDB X-ray Structure Validation Summary Report ⓘ

Apr 18, 2026 – 10:47 AM UTC

PDB ID : 1DQA / pdb_00001dqa
Title : COMPLEX OF THE CATALYTIC PORTION OF HUMAN HMG-COA REDUCTASE WITH HMG, COA, AND NADP+
Authors : Istvan, E.S.; Palnitkar, M.; Buchanan, S.K.; Deisenhofer, J.
Deposited on : 1999-12-30
Resolution : 2.00 Å (reported)

This is a wwPDB X-ray Structure Validation Summary Report for a publicly released PDB entry.

We welcome your comments at validation@mail.wwpdb.org

A user guide is available at

<https://www.wwpdb.org/validation/2017/XrayValidationReportHelp>

with specific help available everywhere you see the ⓘ symbol.

The types of validation reports are described at

<http://www.wwpdb.org/validation/2017/FAQs#types>.

The following versions of software and data (see [references ⓘ](#)) were used in the production of this report:

MolProbity : 4-5-2 with Phenix2.0
Mogul : 2022.3.0, CSD as543be (2022)
Xtrriage (Phenix) : 2.0
EDS : 3.0
Buster-report : wwPDB partial adaption of 1.1.7 (2018)
Percentile statistics : 20250101.v01 (using entries in the PDB archive January 1st 2025)
CCP4 : 9.0.010 (Gargrove)
Density-Fitness : 1.0.12
Ideal geometry (proteins) : Engh & Huber (2001)
Ideal geometry (DNA, RNA) : Parkinson et al. (1996)
Validation Pipeline (wwPDB-VP) : 2.49

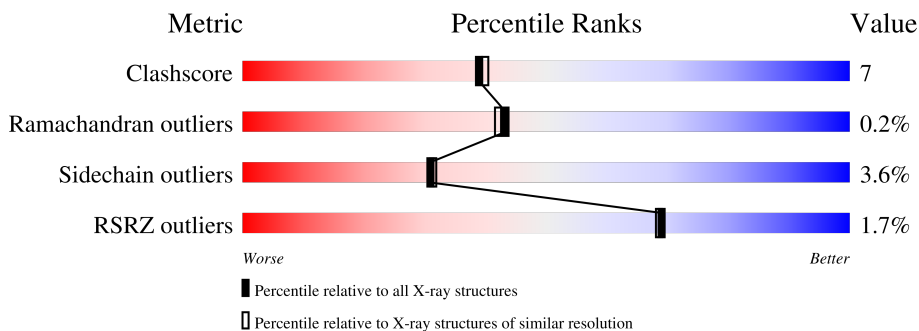
1 Overall quality at a glance

The following experimental techniques were used to determine the structure:

X-RAY DIFFRACTION

The reported resolution of this entry is 2.00 Å.

Percentile scores (ranging between 0-100) for global validation metrics of the entry are shown in the following graphic. The table shows the number of entries on which the scores are based.



Metric	Whole archive (#Entries)	Similar resolution (#Entries, resolution range(Å))
Clashscore	190562	11152 (2.00-2.00)
Ramachandran outliers	187476	11031 (2.00-2.00)
Sidechain outliers	187428	11029 (2.00-2.00)
RSRZ outliers	180081	10067 (2.00-2.00)

The table below summarises the geometric issues observed across the polymeric chains and their fit to the electron density. The red, orange, yellow and green segments of the lower bar indicate the fraction of residues that contain outliers for ≥ 3 , 2, 1 and 0 types of geometric quality criteria respectively. A grey segment represents the fraction of residues that are not modelled. The numeric value for each fraction is indicated below the corresponding segment, with a dot representing fractions $\leq 5\%$. The upper red bar (where present) indicates the fraction of residues that have poor fit to the electron density. The numeric value is given above the bar.

Mol	Chain	Length	Quality of chain
1	A	467	 2% 71% 15% • 12%
1	B	467	 2% 73% 11% • 13%
1	C	467	 2% 74% 11% • 13%
1	D	467	 73% 11% • 15%

The following table lists non-polymeric compounds, carbohydrate monomers and non-standard residues in protein, DNA, RNA chains that are outliers for geometric or electron-density-fit criteria:

Mol	Type	Chain	Res	Chirality	Geometry	Clashes	Electron density
2	COA	A	101	X	-	-	-
2	COA	B	102	X	-	-	-
2	COA	C	103	X	-	-	-
2	COA	D	104	X	-	-	-

2 Entry composition

There are 5 unique types of molecules in this entry. The entry contains 12909 atoms, of which 0 are hydrogens and 0 are deuteriums.

In the tables below, the ZeroOcc column contains the number of atoms modelled with zero occupancy, the AltConf column contains the number of residues with at least one atom in alternate conformation and the Trace column contains the number of residues modelled with at most 2 atoms.

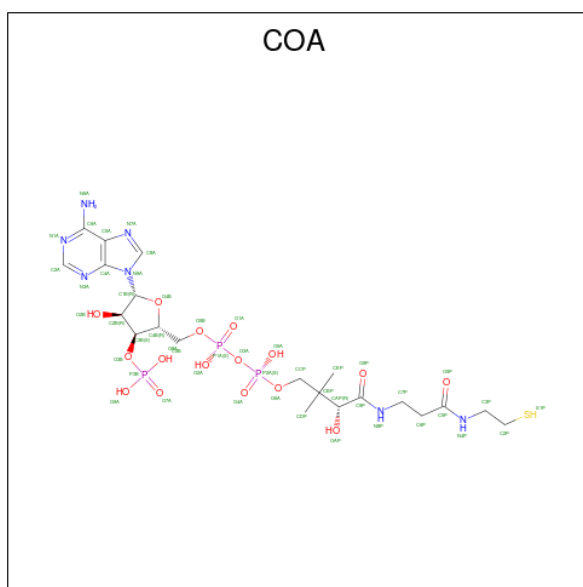
- Molecule 1 is a protein called PROTEIN (HMG-COA REDUCTASE).

Mol	Chain	Residues	Atoms					ZeroOcc	AltConf	Trace
			Total	C	N	O	S			
1	A	409	Total 3044	C 1897	N 537	O 580	S 30	0	0	0
1	B	405	Total 3010	C 1876	N 530	O 575	S 29	0	0	0
1	C	404	Total 3011	C 1876	N 535	O 570	S 30	0	0	0
1	D	396	Total 2945	C 1832	N 522	O 561	S 30	0	0	0

There are 4 discrepancies between the modelled and reference sequences:

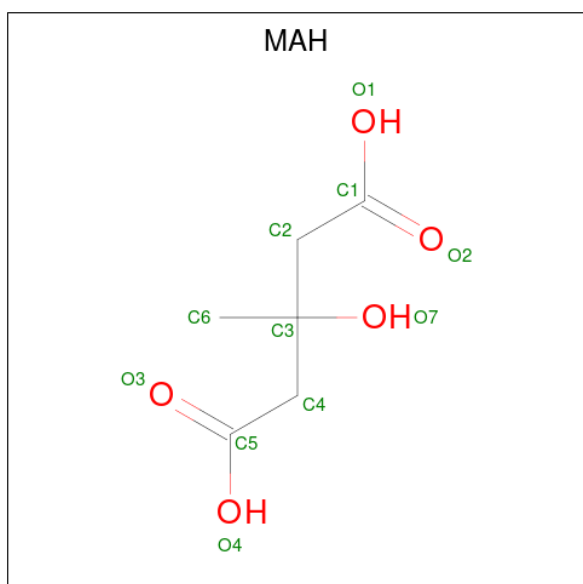
Chain	Residue	Modelled	Actual	Comment	Reference
A	485	ILE	MET	engineered mutation	UNP P04035
B	485	ILE	MET	engineered mutation	UNP P04035
C	485	ILE	MET	engineered mutation	UNP P04035
D	485	ILE	MET	engineered mutation	UNP P04035

- Molecule 2 is COENZYME A (CCD ID: COA) (formula: $C_{21}H_{36}N_7O_{16}P_3S$).



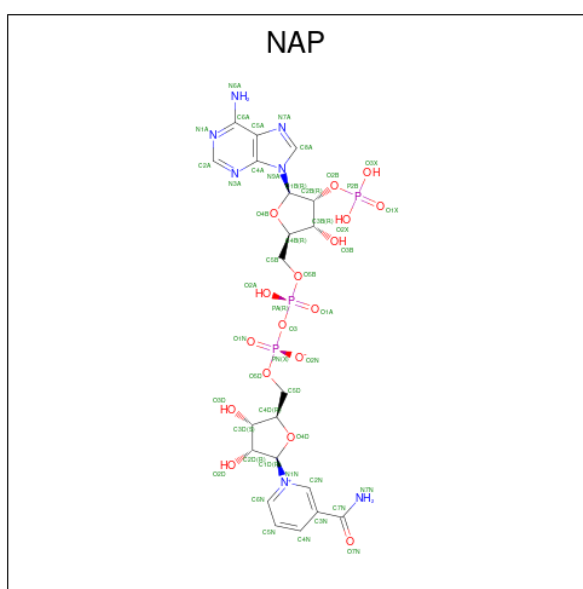
Mol	Chain	Residues	Atoms					ZeroOcc	AltConf		
			Total	C	N	O	P			S	
2	A	1	Total	48	21	7	16	3	1	0	0
2	B	1	Total	48	21	7	16	3	1	0	0
2	C	1	Total	48	21	7	16	3	1	0	0
2	D	1	Total	48	21	7	16	3	1	0	0

- Molecule 3 is 3-HYDROXY-3-METHYL-GLUTARIC ACID (CCD ID: MAH) (formula: $C_6H_{10}O_5$).



Mol	Chain	Residues	Atoms	ZeroOcc	AltConf
3	A	1	Total C O 11 6 5	0	0
3	B	1	Total C O 11 6 5	0	0
3	C	1	Total C O 11 6 5	0	0
3	D	1	Total C O 11 6 5	0	0

- Molecule 4 is NADP NICOTINAMIDE-ADENINE-DINUCLEOTIDE PHOSPHATE (CCD ID: NAP) (formula: C₂₁H₂₈N₇O₁₇P₃).



Mol	Chain	Residues	Atoms	ZeroOcc	AltConf
4	A	1	Total C N O P 48 21 7 17 3	0	0
4	B	1	Total C N O P 48 21 7 17 3	0	0
4	C	1	Total C N O P 48 21 7 17 3	0	0
4	D	1	Total C N O P 48 21 7 17 3	0	0

- Molecule 5 is water.

Mol	Chain	Residues	Atoms	ZeroOcc	AltConf
5	A	121	Total O 121 121	0	0

Continued on next page...

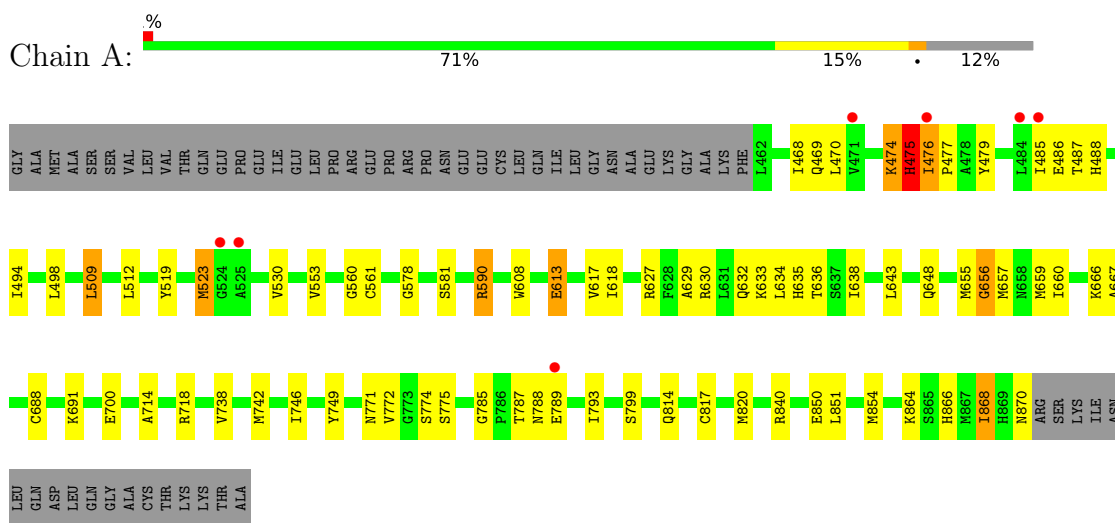
Continued from previous page...

Mol	Chain	Residues	Atoms		ZeroOcc	AltConf
5	B	119	Total 119	O 119	0	0
5	C	106	Total 106	O 106	0	0
5	D	125	Total 125	O 125	0	0

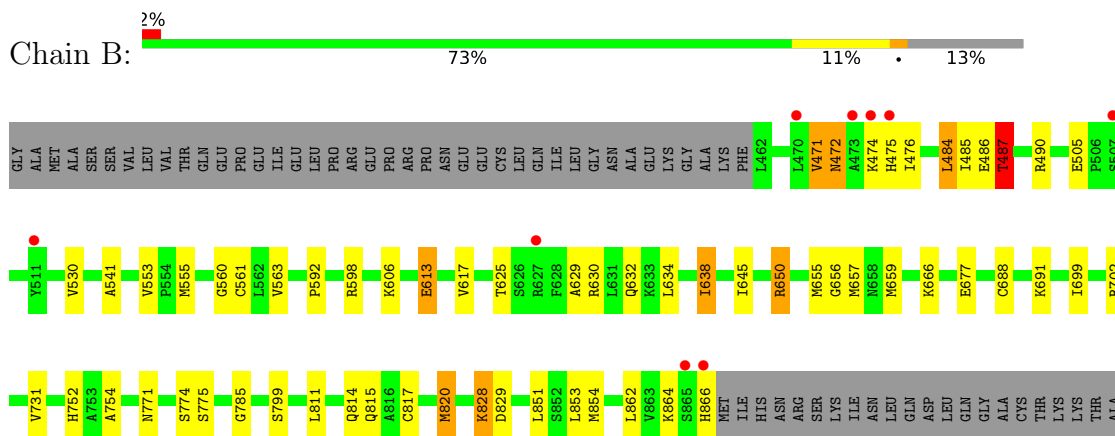
3 Residue-property plots i

These plots are drawn for all protein, RNA, DNA and oligosaccharide chains in the entry. The first graphic for a chain summarises the proportions of the various outlier classes displayed in the second graphic. The second graphic shows the sequence view annotated by issues in geometry and electron density. Residues are color-coded according to the number of geometric quality criteria for which they contain at least one outlier: green = 0, yellow = 1, orange = 2 and red = 3 or more. A red dot above a residue indicates a poor fit to the electron density ($RSRZ > 2$). Stretches of 2 or more consecutive residues without any outlier are shown as a green connector. Residues present in the sample, but not in the model, are shown in grey.

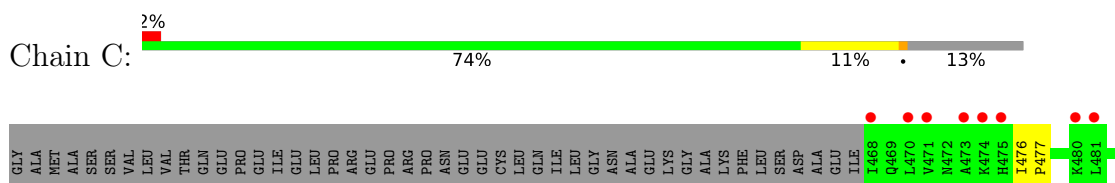
- Molecule 1: PROTEIN (HMG-COA REDUCTASE)

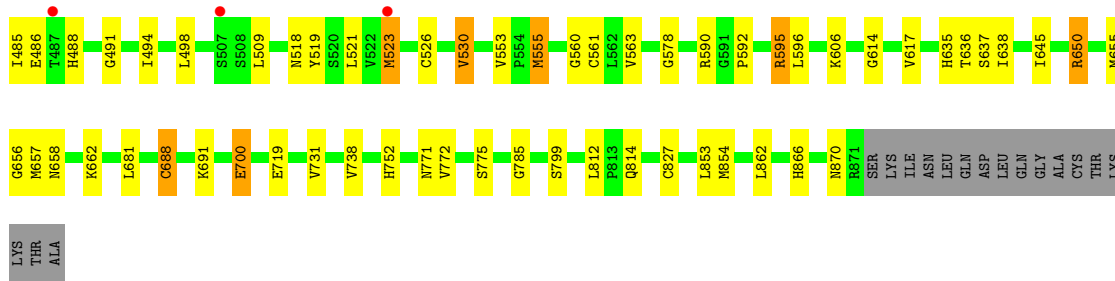


- Molecule 1: PROTEIN (HMG-COA REDUCTASE)



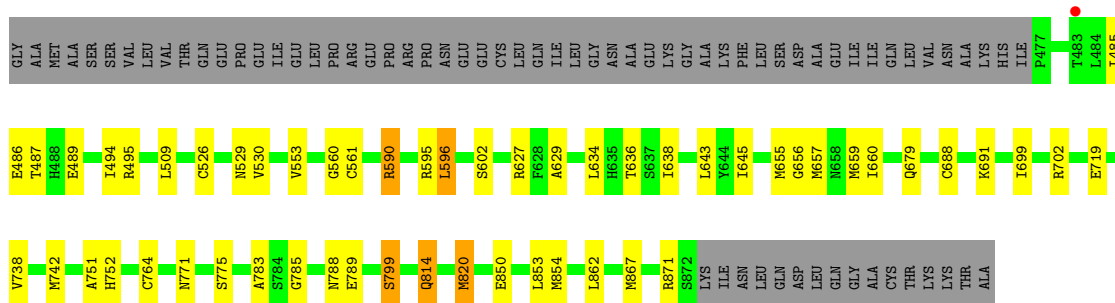
- Molecule 1: PROTEIN (HMG-COA REDUCTASE)





- Molecule 1: PROTEIN (HMG-COA REDUCTASE)

Chain D: 73% 11% 15%



4 Data and refinement statistics i

Property	Value	Source
Space group	P 1 21 1	Depositor
Cell constants a, b, c, α , β , γ	73.92Å 172.63Å 73.99Å 90.00° 117.50° 90.00°	Depositor
Resolution (Å)	44.00 – 2.00 44.00 – 2.00	Depositor EDS
% Data completeness (in resolution range)	99.7 (44.00-2.00) 49.9 (44.00-2.00)	Depositor EDS
R_{merge}	0.05	Depositor
R_{sym}	0.05	Depositor
$\langle I/\sigma(I) \rangle$ ¹	6.65 (at 2.00Å)	Xtriage
Refinement program	CNS 0.5	Depositor
R, R_{free}	0.168 , 0.197 0.177 , (Not available)	Depositor DCC
R_{free} test set	No test flags present.	wwPDB-VP
Wilson B-factor (Å ²)	17.4	Xtriage
Anisotropy	0.262	Xtriage
Bulk solvent k_{sol} (e/Å ³), B_{sol} (Å ²)	0.39 , 46.7	EDS
L-test for twinning ²	$\langle L \rangle = 0.49$, $\langle L^2 \rangle = 0.33$	Xtriage
Estimated twinning fraction	0.000 for -h-l,k,h 0.000 for l,k,-h-l 0.053 for h,-k,-h-l 0.069 for -h-l,-k,l 0.046 for l,-k,h	Xtriage
F_o, F_c correlation	0.95	EDS
Total number of atoms	12909	wwPDB-VP
Average B, all atoms (Å ²)	20.0	wwPDB-VP

Xtriage's analysis on translational NCS is as follows: *The largest off-origin peak in the Patterson function is 15.49% of the height of the origin peak. No significant pseudotranslation is detected.*

¹Intensities estimated from amplitudes.

²Theoretical values of $\langle |L| \rangle$, $\langle L^2 \rangle$ for acentric reflections are 0.5, 0.333 respectively for untwinned datasets, and 0.375, 0.2 for perfectly twinned datasets.

5 Model quality i

5.1 Standard geometry i

Bond lengths and bond angles in the following residue types are not validated in this section: COA, NAP, MAH

The Z score for a bond length (or angle) is the number of standard deviations the observed value is removed from the expected value. A bond length (or angle) with $|Z| > 5$ is considered an outlier worth inspection. RMSZ is the root-mean-square of all Z scores of the bond lengths (or angles).

Mol	Chain	Bond lengths		Bond angles	
		RMSZ	# Z >5	RMSZ	# Z >5
1	A	0.70	5/3089 (0.2%)	1.05	14/4177 (0.3%)
1	B	0.65	1/3054 (0.0%)	1.03	10/4130 (0.2%)
1	C	0.65	1/3056 (0.0%)	1.03	16/4131 (0.4%)
1	D	0.68	1/2989 (0.0%)	1.03	15/4039 (0.4%)
All	All	0.67	8/12188 (0.1%)	1.04	55/16477 (0.3%)

Chiral center outliers are detected by calculating the chiral volume of a chiral center and verifying if the center is modelled as a planar moiety or with the opposite hand. A planarity outlier is detected by checking planarity of atoms in a peptide group, atoms in a mainchain group or atoms of a sidechain that are expected to be planar.

Mol	Chain	#Chirality outliers	#Planarity outliers
1	A	0	1

The worst 5 of 8 bond length outliers are listed below:

Mol	Chain	Res	Type	Atoms	Z	Observed(Å)	Ideal(Å)
1	A	476	ILE	N-CA	9.00	1.56	1.46
1	D	820	MET	SD-CE	-8.74	1.57	1.79
1	A	474	LYS	CA-C	-8.11	1.43	1.53
1	A	475	HIS	C-N	7.67	1.42	1.33
1	A	474	LYS	C-N	-7.06	1.23	1.33

The worst 5 of 55 bond angle outliers are listed below:

Mol	Chain	Res	Type	Atoms	Z	Observed(°)	Ideal(°)
1	B	553	VAL	N-CA-C	10.16	118.02	107.76
1	D	553	VAL	N-CA-C	9.39	117.25	107.76
1	A	476	ILE	N-CA-C	9.17	116.52	108.63
1	A	475	HIS	CA-CB-CG	-9.13	104.67	113.80

Continued on next page...

Continued from previous page...

Mol	Chain	Res	Type	Atoms	Z	Observed($^{\circ}$)	Ideal($^{\circ}$)
1	A	553	VAL	N-CA-C	8.78	116.62	107.76

There are no chirality outliers.

All (1) planarity outliers are listed below:

Mol	Chain	Res	Type	Group
1	A	749	TYR	Sidechain

5.2 Too-close contacts [i](#)

In the following table, the Non-H and H(model) columns list the number of non-hydrogen atoms and hydrogen atoms in the chain respectively. The H(added) column lists the number of hydrogen atoms added and optimized by MolProbity. The Clashes column lists the number of clashes within the asymmetric unit, whereas Symm-Clashes lists symmetry-related clashes.

Mol	Chain	Non-H	H(model)	H(added)	Clashes	Symm-Clashes
1	A	3044	0	3085	49	0
1	B	3010	0	3052	54	0
1	C	3011	0	3056	40	0
1	D	2945	0	2981	26	0
2	A	48	0	32	2	0
2	B	48	0	32	4	0
2	C	48	0	32	6	0
2	D	48	0	32	1	0
3	A	11	0	8	2	0
3	B	11	0	8	1	0
3	C	11	0	8	0	0
3	D	11	0	8	0	0
4	A	48	0	25	7	0
4	B	48	0	25	5	0
4	C	48	0	25	0	0
4	D	48	0	25	4	0
5	A	121	0	0	5	0
5	B	119	0	0	1	0
5	C	106	0	0	1	0
5	D	125	0	0	0	0
All	All	12909	0	12434	168	0

The all-atom clashscore is defined as the number of clashes found per 1000 atoms (including hydrogen atoms). The all-atom clashscore for this structure is 7.

The worst 5 of 168 close contacts within the same asymmetric unit are listed below, sorted by

their clash magnitude.

Atom-1	Atom-2	Interatomic distance (Å)	Clash overlap (Å)
1:A:657:MET:HG2	4:A:1:NAP:C4N	1.93	0.99
1:B:657:MET:HG2	4:B:2:NAP:C4N	1.93	0.99
1:A:866:HIS:HE1	2:A:101:COA:HN4	1.19	0.86
1:B:625:THR:HG22	1:B:666:LYS:HD2	1.58	0.84
1:A:475:HIS:ND1	1:A:475:HIS:O	2.12	0.81

There are no symmetry-related clashes.

5.3 Torsion angles [i](#)

5.3.1 Protein backbone [i](#)

In the following table, the Percentiles column shows the percent Ramachandran outliers of the chain as a percentile score with respect to all X-ray entries followed by that with respect to entries of similar resolution.

The Analysed column shows the number of residues for which the backbone conformation was analysed, and the total number of residues.

Mol	Chain	Analysed	Favoured	Allowed	Outliers	Percentiles	
1	A	407/467 (87%)	391 (96%)	15 (4%)	1 (0%)	43	42
1	B	403/467 (86%)	381 (94%)	19 (5%)	3 (1%)	18	14
1	C	402/467 (86%)	388 (96%)	14 (4%)	0	100	100
1	D	394/467 (84%)	378 (96%)	16 (4%)	0	100	100
All	All	1606/1868 (86%)	1538 (96%)	64 (4%)	4 (0%)	43	42

All (4) Ramachandran outliers are listed below:

Mol	Chain	Res	Type
1	A	475	HIS
1	B	484	LEU
1	B	864	LYS
1	B	487	THR

5.3.2 Protein sidechains [i](#)

In the following table, the Percentiles column shows the percent sidechain outliers of the chain as a percentile score with respect to all X-ray entries followed by that with respect to entries of similar

resolution.

The Analysed column shows the number of residues for which the sidechain conformation was analysed, and the total number of residues.

Mol	Chain	Analysed	Rotameric	Outliers	Percentiles	
1	A	327/375 (87%)	312 (95%)	15 (5%)	24	22
1	B	323/375 (86%)	310 (96%)	13 (4%)	28	27
1	C	323/375 (86%)	313 (97%)	10 (3%)	35	37
1	D	316/375 (84%)	307 (97%)	9 (3%)	38	41
All	All	1289/1500 (86%)	1242 (96%)	47 (4%)	31	31

5 of 47 residues with a non-rotameric sidechain are listed below:

Mol	Chain	Res	Type
1	C	498	LEU
1	C	688	CYS
1	C	523	MET
1	C	637	SER
1	C	814	GLN

Sometimes sidechains can be flipped to improve hydrogen bonding and reduce clashes. 5 of 26 such sidechains are listed below:

Mol	Chain	Res	Type
1	B	819	GLN
1	C	635	HIS
1	D	648	GLN
1	C	518	ASN
1	C	658	ASN

5.3.3 RNA [i](#)

There are no RNA molecules in this entry.

5.4 Non-standard residues in protein, DNA, RNA chains [i](#)

There are no non-standard protein/DNA/RNA residues in this entry.

5.5 Carbohydrates [i](#)

There are no oligosaccharides in this entry.

5.6 Ligand geometry

12 ligands are modelled in this entry.

In the following table, the Counts columns list the number of bonds (or angles) for which Mogul statistics could be retrieved, the number of bonds (or angles) that are observed in the model and the number of bonds (or angles) that are defined in the Chemical Component Dictionary. The Link column lists molecule types, if any, to which the group is linked. The Z score for a bond length (or angle) is the number of standard deviations the observed value is removed from the expected value. A bond length (or angle) with $|Z| > 2$ is considered an outlier worth inspection. RMSZ is the root-mean-square of all Z scores of the bond lengths (or angles).

Mol	Type	Chain	Res	Link	Bond lengths			Bond angles		
					Counts	RMSZ	# Z > 2	Counts	RMSZ	# Z > 2
4	NAP	B	2	-	50,52,52	1.75	9 (18%)	71,80,80	1.96	13 (18%)
2	COA	C	103	-	47,50,50	1.80	8 (17%)	69,75,75	1.81	11 (15%)
3	MAH	A	201	-	10,10,10	1.71	2 (20%)	11,14,14	1.24	1 (9%)
2	COA	B	102	-	47,50,50	1.79	10 (21%)	69,75,75	1.79	12 (17%)
4	NAP	D	4	-	50,52,52	1.73	7 (14%)	71,80,80	1.89	13 (18%)
2	COA	A	101	-	47,50,50	1.72	8 (17%)	69,75,75	1.76	12 (17%)
3	MAH	D	203	-	10,10,10	1.34	1 (10%)	11,14,14	1.06	0
3	MAH	B	202	-	10,10,10	1.53	2 (20%)	11,14,14	1.05	0
3	MAH	C	204	-	10,10,10	1.34	1 (10%)	11,14,14	1.20	1 (9%)
2	COA	D	104	-	47,50,50	1.78	7 (14%)	69,75,75	1.89	14 (20%)
4	NAP	A	1	-	50,52,52	1.72	9 (18%)	71,80,80	1.89	9 (12%)
4	NAP	C	3	-	50,52,52	1.63	6 (12%)	71,80,80	1.87	10 (14%)

In the following table, the Chirals column lists the number of chiral outliers, the number of chiral centers analysed, the number of these observed in the model and the number defined in the Chemical Component Dictionary. Similar counts are reported in the Torsion and Rings columns. '-' means no outliers of that kind were identified.

Mol	Type	Chain	Res	Link	Chirals	Torsions	Rings
4	NAP	B	2	-	-	7/35/67/67	0/5/5/5
2	COA	C	103	-	1/1/11/13	8/48/64/64	0/3/3/3
3	MAH	A	201	-	-	1/10/10/10	-
2	COA	B	102	-	1/1/11/13	7/48/64/64	0/3/3/3
4	NAP	D	4	-	-	11/35/67/67	0/5/5/5
2	COA	A	101	-	1/1/11/13	1/48/64/64	0/3/3/3
3	MAH	D	203	-	-	1/10/10/10	-
3	MAH	B	202	-	-	1/10/10/10	-
3	MAH	C	204	-	-	0/10/10/10	-

Continued on next page...

Continued from previous page...

Mol	Type	Chain	Res	Link	Chirals	Torsions	Rings
2	COA	D	104	-	1/1/11/13	10/48/64/64	0/3/3/3
4	NAP	A	1	-	-	8/35/67/67	0/5/5/5
4	NAP	C	3	-	-	11/35/67/67	0/5/5/5

The worst 5 of 70 bond length outliers are listed below:

Mol	Chain	Res	Type	Atoms	Z	Observed(Å)	Ideal(Å)
4	D	4	NAP	C4A-N3A	7.63	1.48	1.34
4	C	3	NAP	C4A-N3A	7.13	1.47	1.34
4	A	1	NAP	C4A-N3A	7.00	1.47	1.34
4	B	2	NAP	C4A-N3A	6.88	1.47	1.34
2	C	103	COA	C4A-N3A	6.71	1.47	1.34

The worst 5 of 96 bond angle outliers are listed below:

Mol	Chain	Res	Type	Atoms	Z	Observed(°)	Ideal(°)
4	B	2	NAP	N9A-C8A-N7A	7.13	124.05	113.94
2	D	104	COA	C5A-C4A-N3A	-6.91	117.20	126.72
4	A	1	NAP	N9A-C8A-N7A	6.82	123.61	113.94
2	C	103	COA	C5A-C4A-N3A	-6.73	117.44	126.72
4	D	4	NAP	N9A-C8A-N7A	6.65	123.38	113.94

All (4) chirality outliers are listed below:

Mol	Chain	Res	Type	Atom
2	A	101	COA	C3B
2	B	102	COA	C3B
2	C	103	COA	C3B
2	D	104	COA	C3B

5 of 66 torsion outliers are listed below:

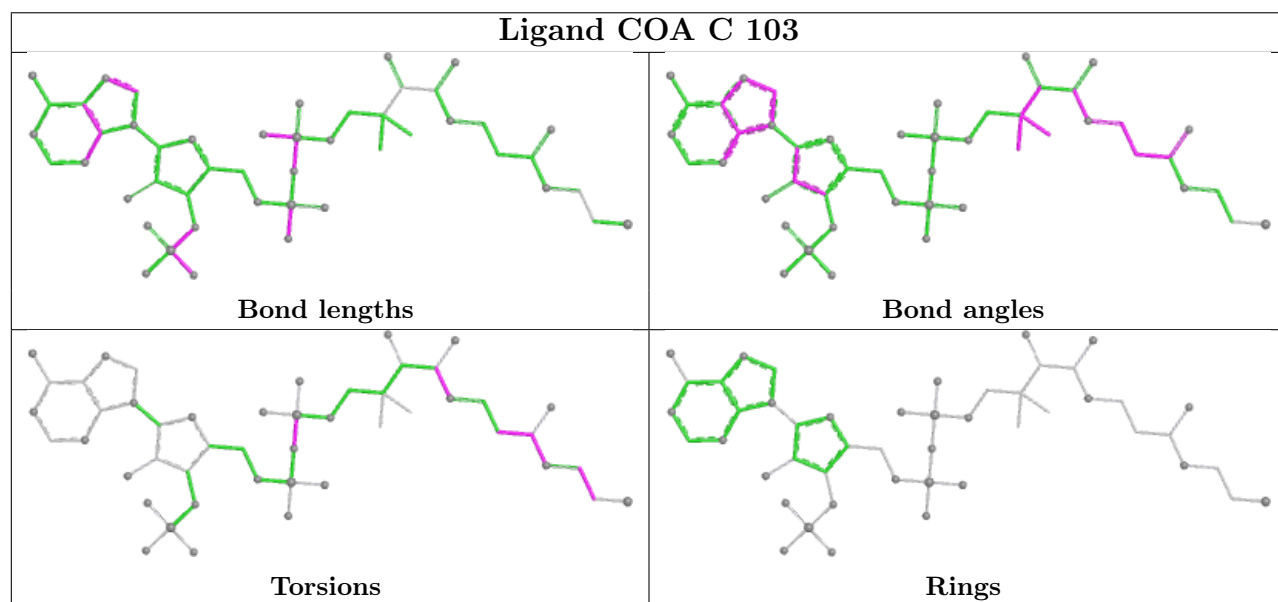
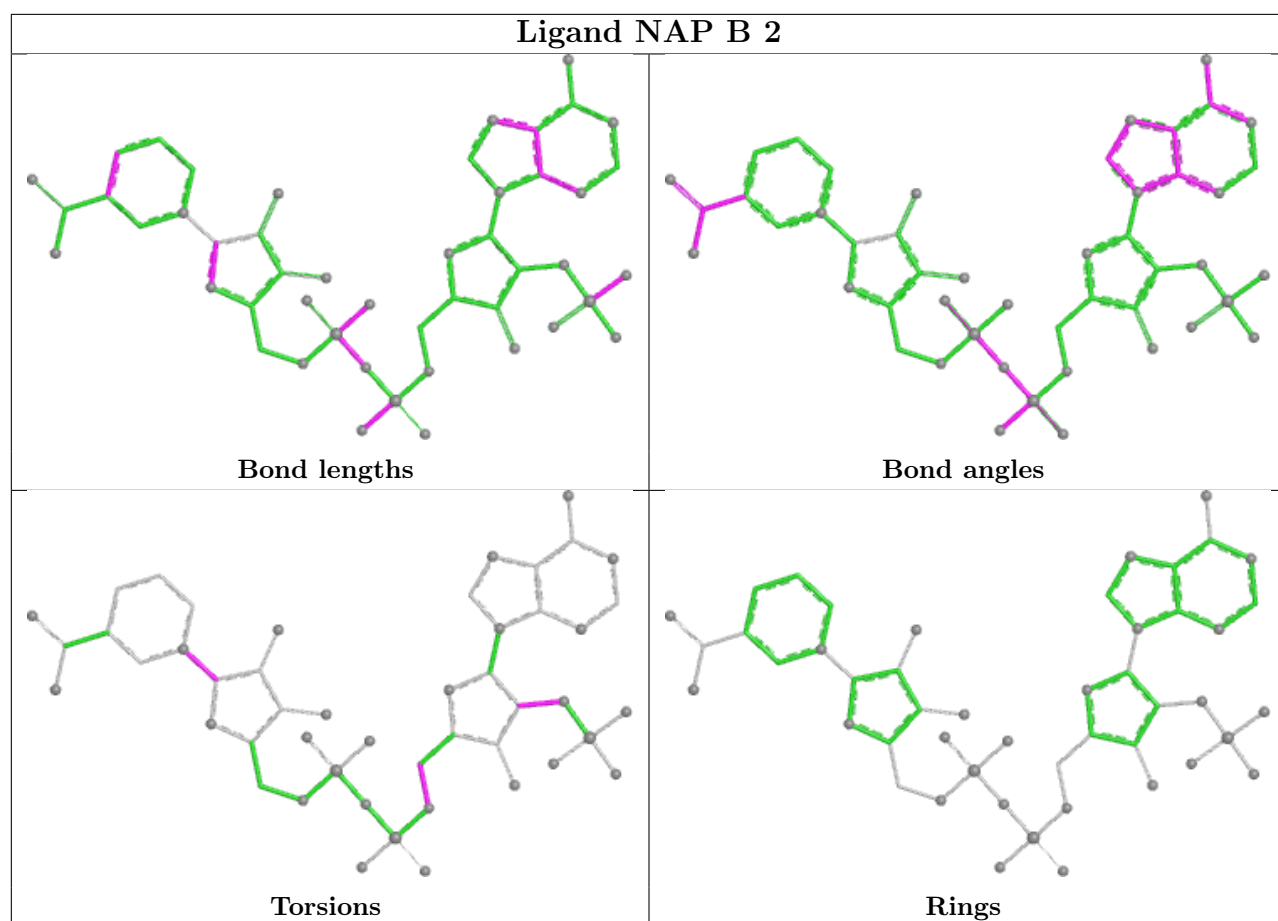
Mol	Chain	Res	Type	Atoms
2	B	102	COA	CAP-C9P-N8P-C7P
2	C	103	COA	CAP-C9P-N8P-C7P
2	D	104	COA	C2B-C3B-O3B-P3B
2	D	104	COA	CAP-C9P-N8P-C7P
4	A	1	NAP	O4D-C1D-N1N-C2N

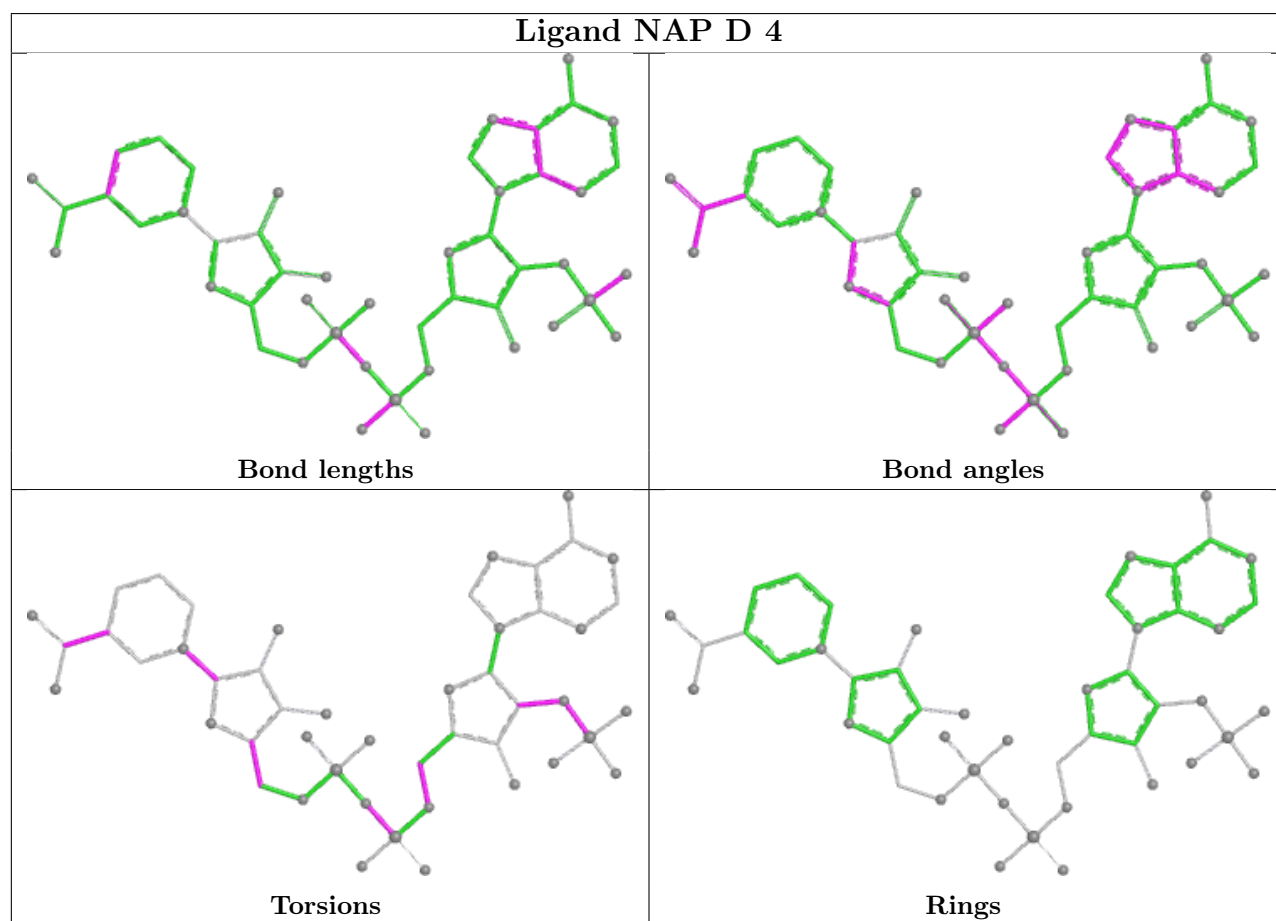
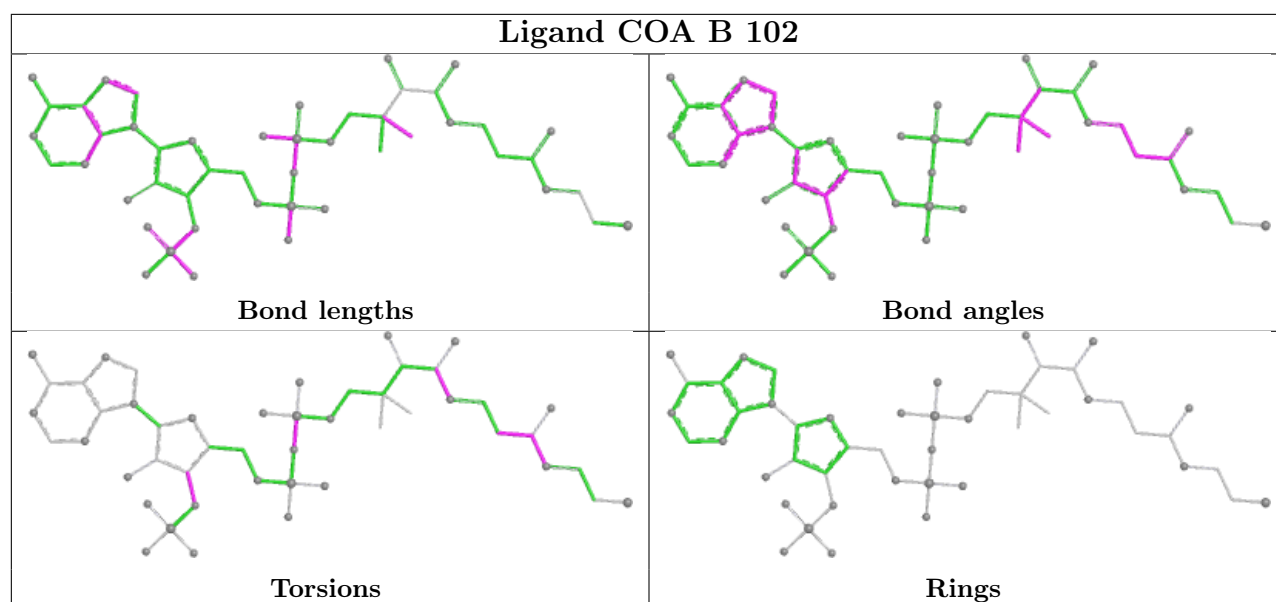
There are no ring outliers.

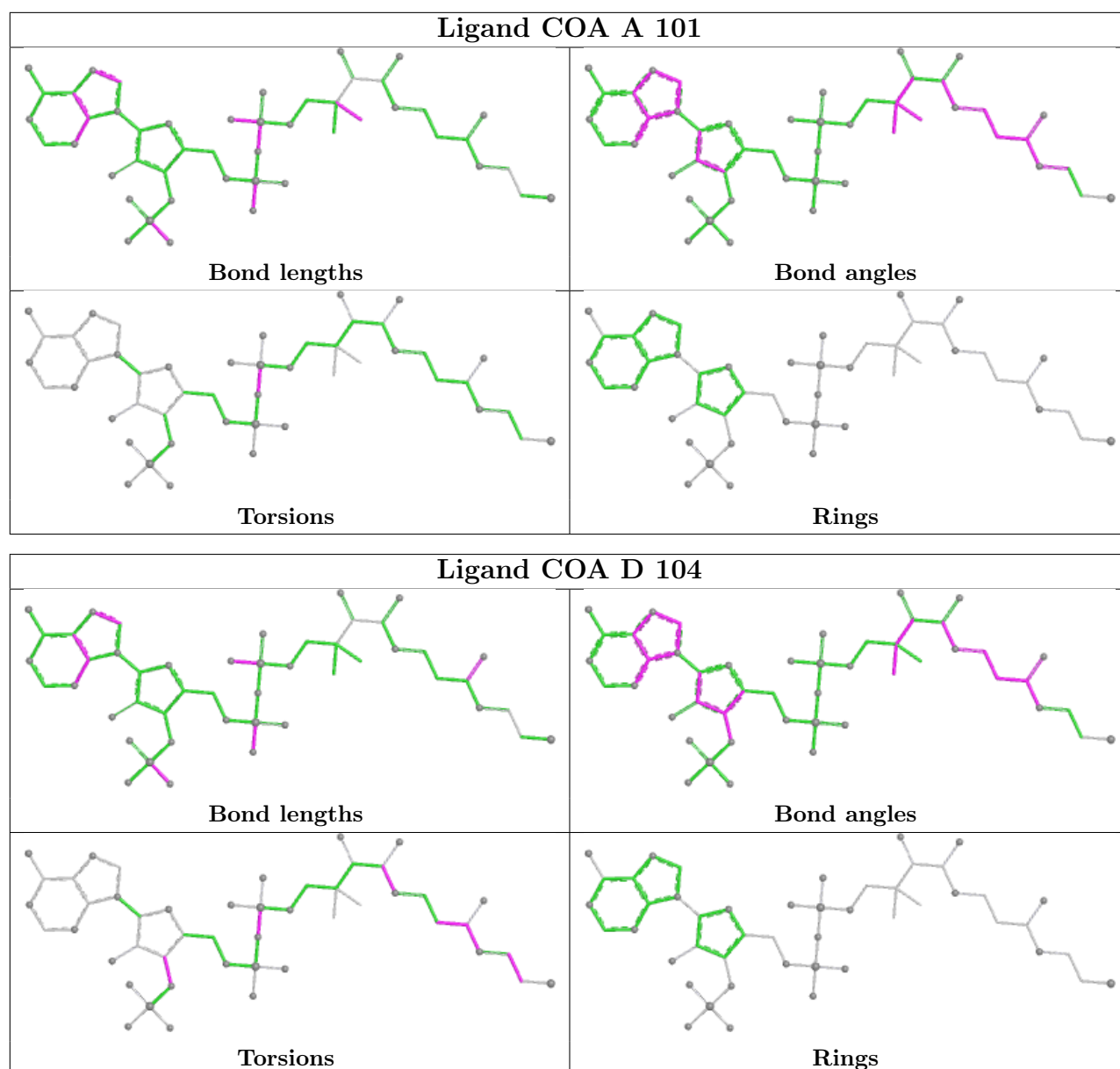
9 monomers are involved in 29 short contacts:

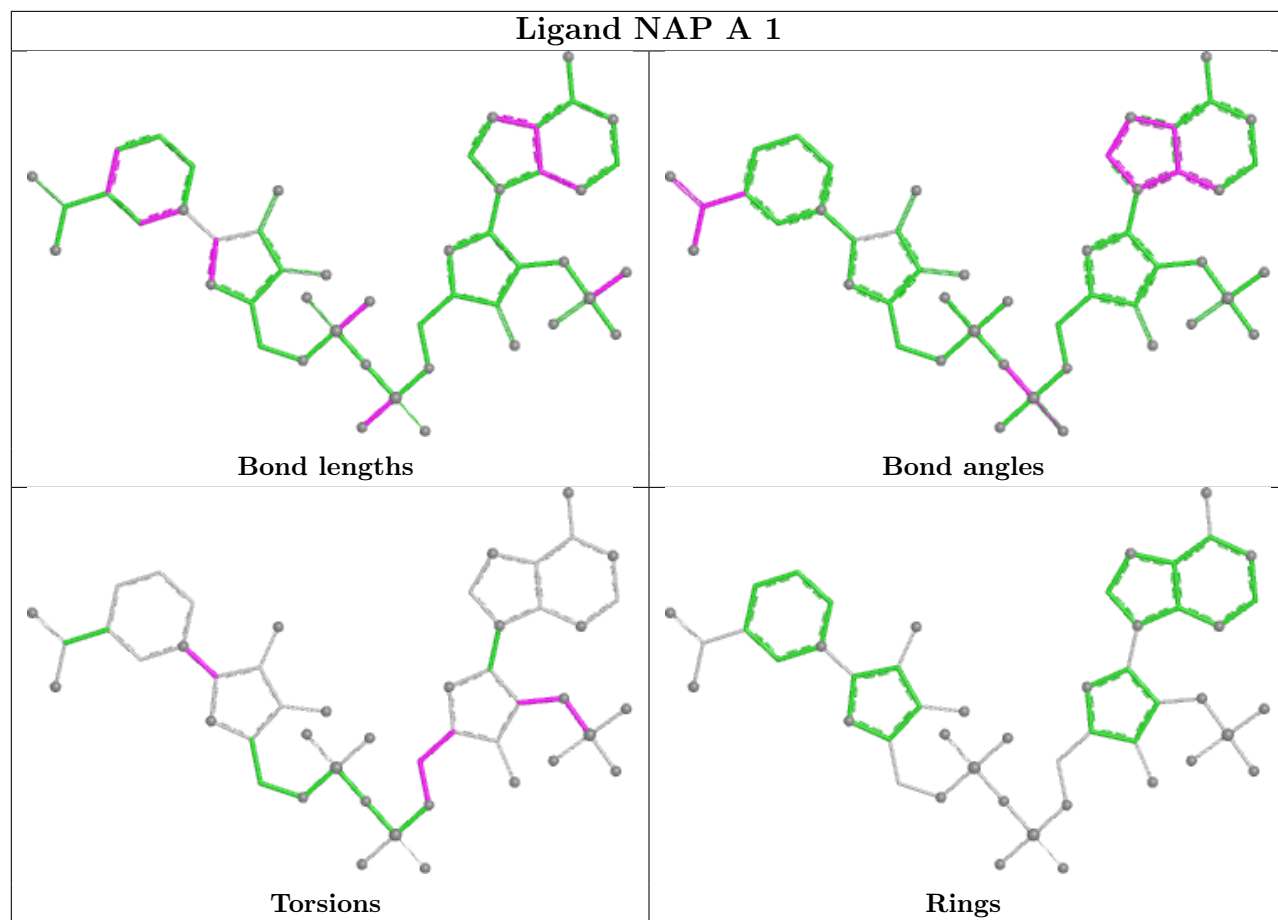
Mol	Chain	Res	Type	Clashes	Symm-Clashes
4	B	2	NAP	5	0
2	C	103	COA	6	0
3	A	201	MAH	2	0
2	B	102	COA	4	0
4	D	4	NAP	4	0
2	A	101	COA	2	0
3	B	202	MAH	1	0
2	D	104	COA	1	0
4	A	1	NAP	7	0

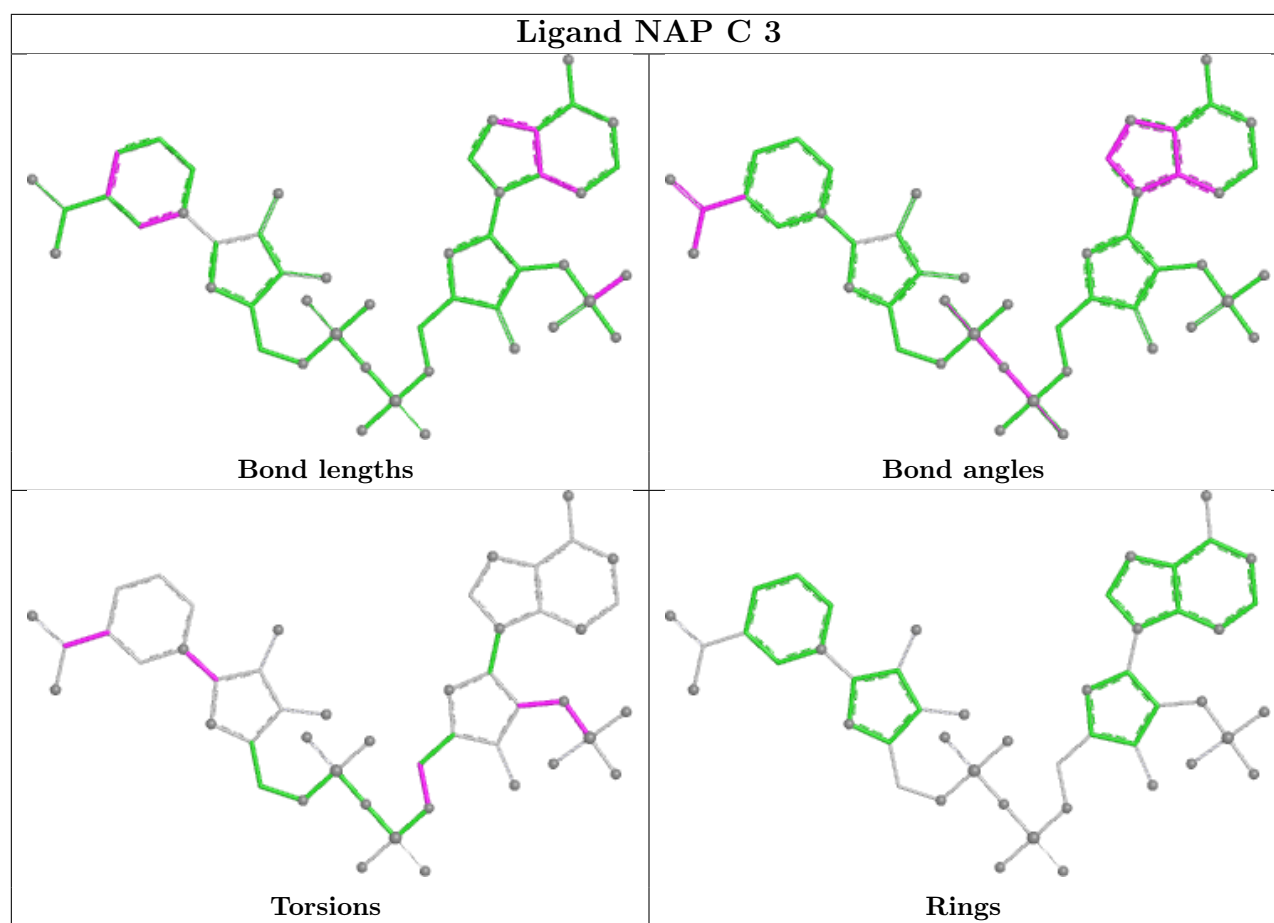
The following is a two-dimensional graphical depiction of Mogul quality analysis of bond lengths, bond angles, torsion angles, and ring geometry for all instances of the Ligand of Interest. In addition, ligands with molecular weight > 250 and outliers as shown on the validation Tables will also be included. For torsion angles, if less than 5% of the Mogul distribution of torsion angles is within 10 degrees of the torsion angle in question, then that torsion angle is considered an outlier. Any bond that is central to one or more torsion angles identified as an outlier by Mogul will be highlighted in the graph. For rings, the root-mean-square deviation (RMSD) between the ring in question and similar rings identified by Mogul is calculated over all ring torsion angles. If the average RMSD is greater than 60 degrees and the minimal RMSD between the ring in question and any Mogul-identified rings is also greater than 60 degrees, then that ring is considered an outlier. The outliers are highlighted in purple. The color gray indicates Mogul did not find sufficient equivalents in the CSD to analyse the geometry.











5.7 Other polymers [\(i\)](#)

There are no such residues in this entry.

5.8 Polymer linkage issues [\(i\)](#)

There are no chain breaks in this entry.

6 Fit of model and data [i](#)

6.1 Protein, DNA and RNA chains [i](#)

In the following table, the column labelled ‘#RSRZ> 2’ contains the number (and percentage) of RSRZ outliers, followed by percent RSRZ outliers for the chain as percentile scores relative to all X-ray entries and entries of similar resolution. The OWAB column contains the minimum, median, 95th percentile and maximum values of the occupancy-weighted average B-factor per residue. The column labelled ‘Q< 0.9’ lists the number of (and percentage) of residues with an average occupancy less than 0.9.

Mol	Chain	Analysed	<RSRZ>	#RSRZ>2	OWAB(Å ²)	Q<0.9
1	A	409/467 (87%)	-0.03	7 (1%) 69 68	8, 17, 45, 68	0
1	B	405/467 (86%)	-0.07	9 (2%) 62 61	9, 17, 42, 74	0
1	C	404/467 (86%)	-0.04	11 (2%) 56 55	8, 16, 43, 71	0
1	D	396/467 (84%)	-0.19	1 (0%) 90 89	8, 15, 32, 62	0
All	All	1614/1868 (86%)	-0.08	28 (1%) 69 68	8, 16, 42, 74	0

The worst 5 of 28 RSRZ outliers are listed below:

Mol	Chain	Res	Type	RSRZ
1	B	473	ALA	5.1
1	A	484	LEU	4.9
1	B	866	HIS	4.1
1	C	474	LYS	3.8
1	B	475	HIS	3.0

6.2 Non-standard residues in protein, DNA, RNA chains [i](#)

There are no non-standard protein/DNA/RNA residues in this entry.

6.3 Carbohydrates [i](#)

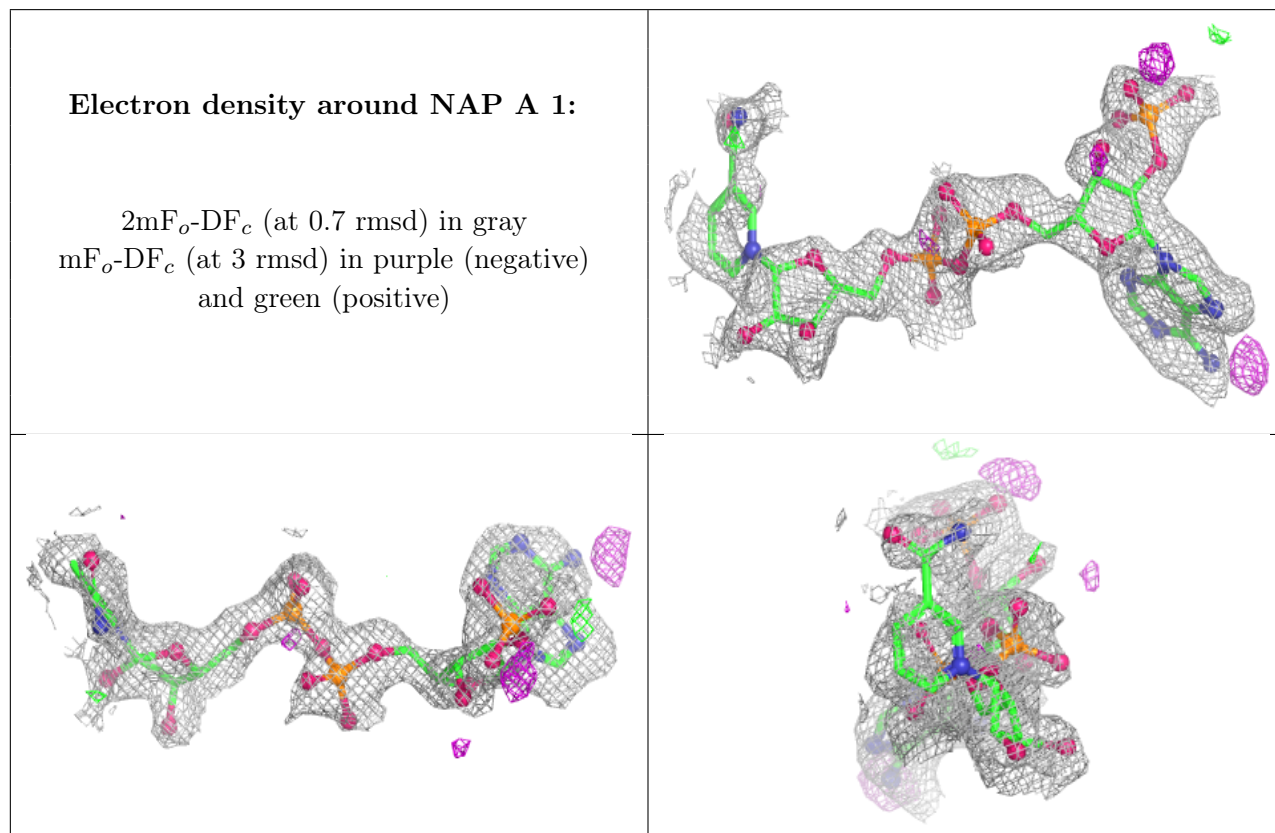
There are no oligosaccharides in this entry.

6.4 Ligands [i](#)

In the following table, the Atoms column lists the number of modelled atoms in the group and the number defined in the chemical component dictionary. The B-factors column lists the minimum, median, 95th percentile and maximum values of B factors of atoms in the group. The column labelled ‘Q< 0.9’ lists the number of atoms with occupancy less than 0.9.

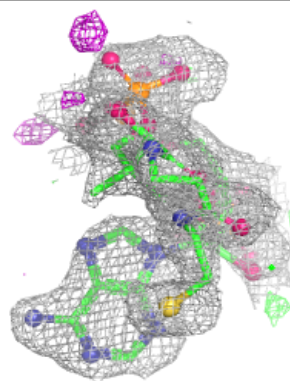
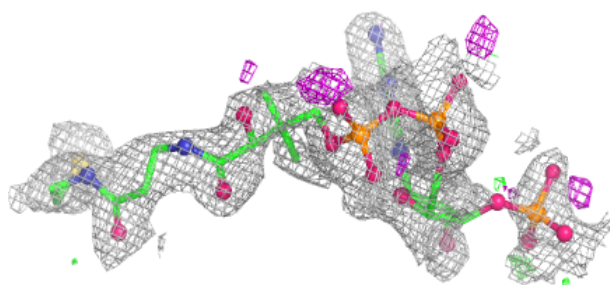
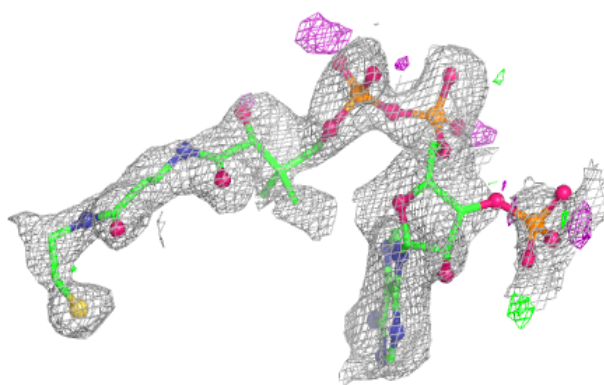
Mol	Type	Chain	Res	Atoms	RSCC	RSR	B-factors(\AA^2)	Q<0.9
4	NAP	A	1	48/48	0.91	0.10	23,32,40,41	0
2	COA	B	102	48/48	0.94	0.09	18,24,35,38	0
2	COA	D	104	48/48	0.94	0.08	14,18,30,34	0
3	MAH	A	201	11/11	0.94	0.09	10,13,19,21	0
3	MAH	B	202	11/11	0.94	0.07	16,18,21,23	0
2	COA	A	101	48/48	0.94	0.08	11,16,32,37	0
4	NAP	B	2	48/48	0.94	0.10	18,28,36,38	0
3	MAH	C	204	11/11	0.95	0.07	12,13,16,17	0
3	MAH	D	203	11/11	0.95	0.06	13,14,18,19	0
4	NAP	C	3	48/48	0.95	0.07	14,18,22,26	0
2	COA	C	103	48/48	0.96	0.08	17,23,41,43	0
4	NAP	D	4	48/48	0.97	0.07	14,19,26,29	0

The following is a graphical depiction of the model fit to experimental electron density of all instances of the Ligand of Interest. In addition, ligands with molecular weight > 250 and outliers as shown on the geometry validation Tables will also be included. Each fit is shown from different orientation to approximate a three-dimensional view.

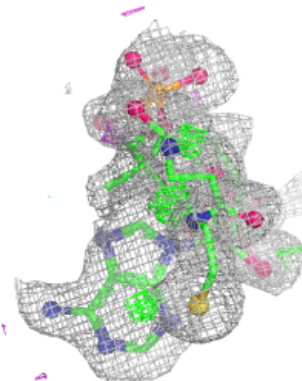
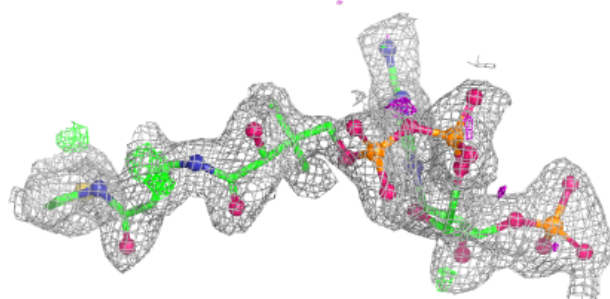
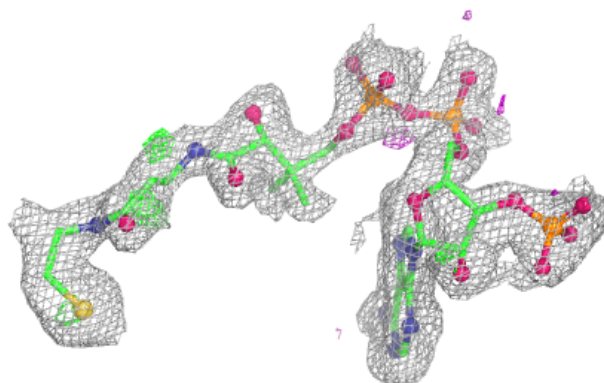


Electron density around COA B 102:

$2mF_o-DF_c$ (at 0.7 rmsd) in gray
 mF_o-DF_c (at 3 rmsd) in purple (negative)
and green (positive)

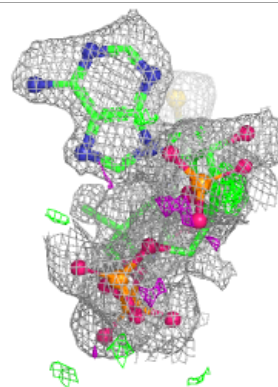
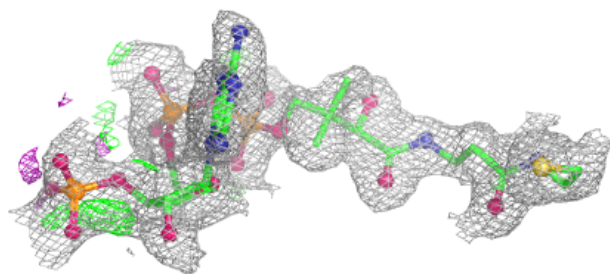
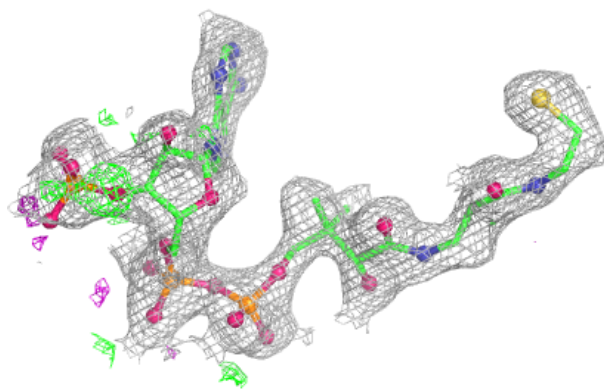
**Electron density around COA D 104:**

$2mF_o-DF_c$ (at 0.7 rmsd) in gray
 mF_o-DF_c (at 3 rmsd) in purple (negative)
and green (positive)

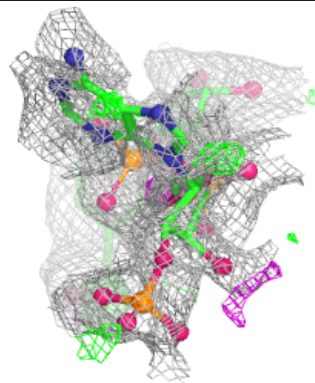
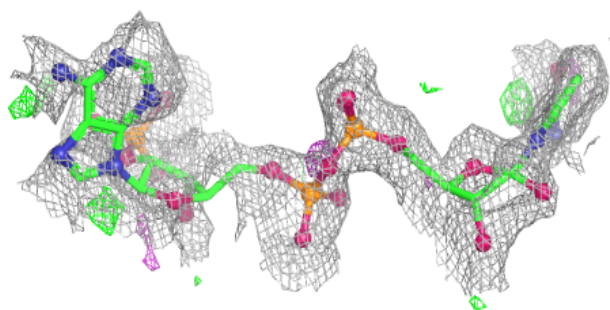
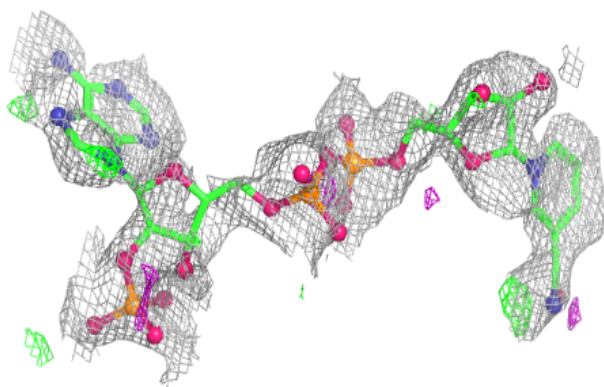


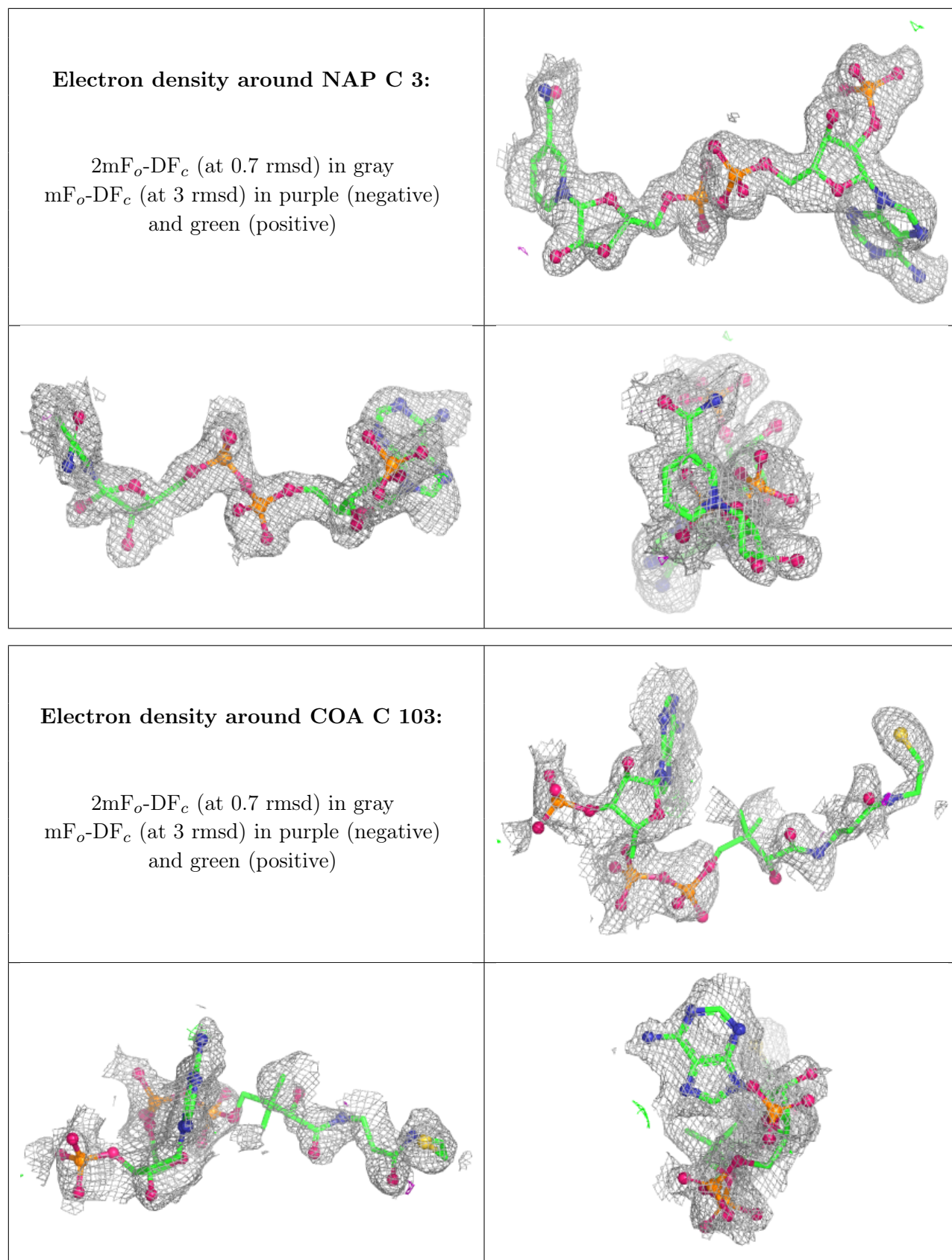
Electron density around COA A 101:

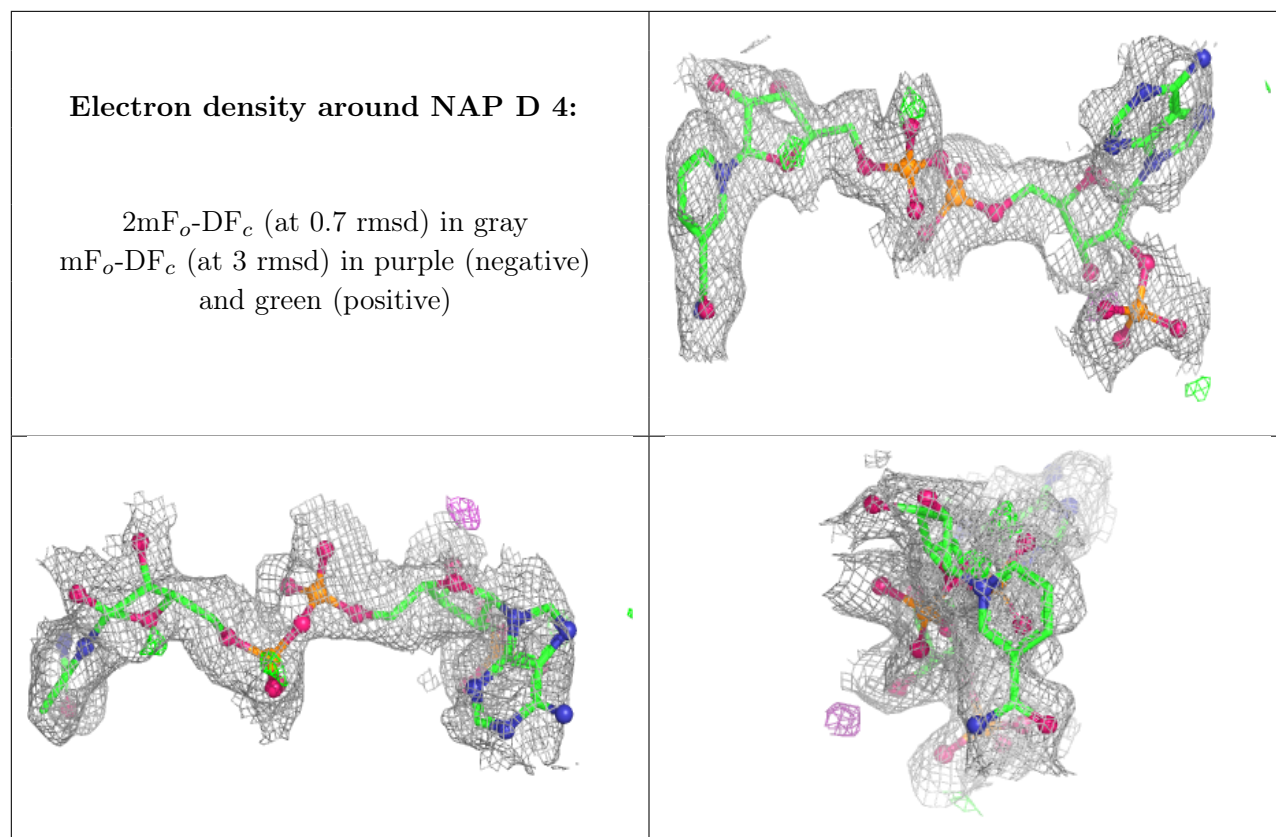
$2mF_o-DF_c$ (at 0.7 rmsd) in gray
 mF_o-DF_c (at 3 rmsd) in purple (negative)
and green (positive)

**Electron density around NAP B 2:**

$2mF_o-DF_c$ (at 0.7 rmsd) in gray
 mF_o-DF_c (at 3 rmsd) in purple (negative)
and green (positive)







6.5 Other polymers [i](#)

There are no such residues in this entry.