



## wwPDB EM Validation Summary Report ⓘ

Mar 23, 2026 – 08:27 PM UTC

PDB ID : 6DRC / pdb\_00006drc  
EMDB ID : EMD-7994  
Title : High IP3 Ca<sup>2+</sup> human type 3 1,4,5-inositol trisphosphate receptor  
Authors : Hite, R.K.; Paknejad, N.  
Deposited on : 2018-06-11  
Resolution : 3.92 Å(reported)

This is a wwPDB EM Validation Summary Report for a publicly released PDB entry.

We welcome your comments at [validation@mail.wwpdb.org](mailto:validation@mail.wwpdb.org)

A user guide is available at

<https://www.wwpdb.org/validation/2017/EMValidationReportHelp>

with specific help available everywhere you see the ⓘ symbol.

The types of validation reports are described at

<http://www.wwpdb.org/validation/2017/FAQs#types>.

---

The following versions of software and data (see [references ⓘ](#)) were used in the production of this report:

EMDB validation analysis : 0.0.1.dev132  
Mogul : 2022.3.0, CSD as543be (2022)  
MolProbity : **FAILED**  
Buster-report : wwPDB partial adaption of 1.1.7 (2018)  
Percentile statistics : 20250101.v01 (using entries in the PDB archive January 1st 2025)  
EM percentile statistics : 202505.v01 (Using data in the EMDB archive up until May 2025)  
MapQ : 1.9.13  
Ideal geometry (proteins) : Engh & Huber (2001)  
Ideal geometry (DNA, RNA) : Parkinson et al. (1996)  
Validation Pipeline (wwPDB-VP) : 2.49

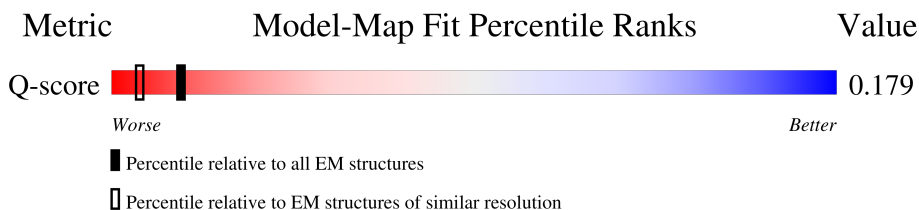
# 1 Overall quality at a glance

The following experimental techniques were used to determine the structure:

*ELECTRON MICROSCOPY*

The reported resolution of this entry is 3.92 Å.

Percentile scores (ranging between 0-100) for global validation metrics of the entry are shown in the following graphic. The table shows the number of entries on which the scores are based.



Metric	EM structures (#Entries)	Similar EM resolution (#Entries, resolution range(Å))
Q-score	25397	7862 ( 3.42 - 4.42 )

MolProbity failed to run properly - the sequence quality summary graphics cannot be shown.

## 2 Entry composition [i](#)

There are 4 unique types of molecules in this entry. The entry contains 138896 atoms, of which 69420 are hydrogens and 0 are deuteriums.

In the tables below, the AltConf column contains the number of residues with at least one atom in alternate conformation and the Trace column contains the number of residues modelled with at most 2 atoms.

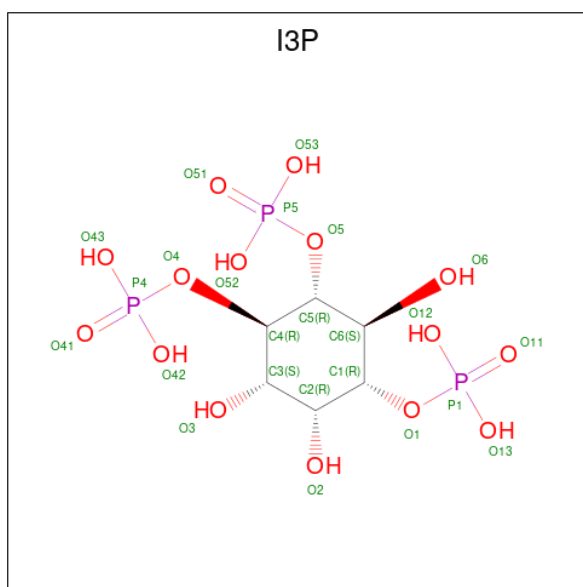
- Molecule 1 is a protein called Inositol 1,4,5-trisphosphate receptor type 3.

Mol	Chain	Residues	Atoms					AltConf	Trace	
			Total	C	H	N	O			S
1	A	2186	34688	11057	17346	2984	3195	106	0	0
1	B	2186	34688	11057	17346	2984	3195	106	0	0
1	C	2186	34688	11057	17346	2984	3195	106	0	0
1	D	2186	34688	11057	17346	2984	3195	106	0	0

- Molecule 2 is ZINC ION (CCD ID: ZN) (formula: Zn).

Mol	Chain	Residues	Atoms		AltConf
			Total	Zn	
2	A	1	1	1	0
2	B	1	1	1	0
2	C	1	1	1	0
2	D	1	1	1	0

- Molecule 3 is D-MYO-INOSITOL-1,4,5-TRIPHOSPHATE (CCD ID: I3P) (formula:  $C_6H_{15}O_{15}P_3$ ).



Mol	Chain	Residues	Atoms				AltConf	
			Total	C	H	O		P
3	A	1	33	6	9	15	3	0
3	B	1	33	6	9	15	3	0
3	C	1	33	6	9	15	3	0
3	D	1	33	6	9	15	3	0

- Molecule 4 is CALCIUM ION (CCD ID: CA) (formula: Ca).

Mol	Chain	Residues	Atoms		AltConf
			Total	Ca	
4	A	2	2	2	0
4	B	2	2	2	0
4	C	2	2	2	0
4	D	2	2	2	0

MolProbity failed to run properly - this section is therefore empty.

### 3 Experimental information

Property	Value	Source
EM reconstruction method	SINGLE PARTICLE	Depositor
Imposed symmetry	POINT, Not provided	
Number of particles used	131437	Depositor
Resolution determination method	FSC 0.143 CUT-OFF	Depositor
CTF correction method	PHASE FLIPPING AND AMPLITUDE CORRECTION	Depositor
Microscope	FEI TITAN KRIOS	Depositor
Voltage (kV)	300	Depositor
Electron dose ( $e^-/\text{\AA}^2$ )	61	Depositor
Minimum defocus (nm)	1000	Depositor
Maximum defocus (nm)	Not provided	
Magnification	22500	Depositor
Image detector	GATAN K2 SUMMIT (4k x 4k)	Depositor
Maximum map value	30.948	Depositor
Minimum map value	-23.778	Depositor
Average map value	-0.007	Depositor
Map value standard deviation	0.817	Depositor
Recommended contour level	3	Depositor
Map size (Å)	417.79202, 417.79202, 417.79202	wwPDB
Map dimensions	384, 384, 384	wwPDB
Map angles (°)	90.0, 90.0, 90.0	wwPDB
Pixel spacing (Å)	1.088, 1.088, 1.088	Depositor

## 4 Model quality [i](#)

### 4.1 Standard geometry [i](#)

MolProbity failed to run properly - this section is therefore empty.

### 4.2 Too-close contacts [i](#)

MolProbity failed to run properly - this section is therefore empty.

### 4.3 Torsion angles [i](#)

#### 4.3.1 Protein backbone [i](#)

MolProbity failed to run properly - this section is therefore empty.

#### 4.3.2 Protein sidechains [i](#)

MolProbity failed to run properly - this section is therefore empty.

#### 4.3.3 RNA [i](#)

MolProbity failed to run properly - this section is therefore empty.

### 4.4 Non-standard residues in protein, DNA, RNA chains [i](#)

There are no non-standard protein/DNA/RNA residues in this entry.

### 4.5 Carbohydrates [i](#)

There are no oligosaccharides in this entry.

### 4.6 Ligand geometry [i](#)

Of 16 ligands modelled in this entry, 12 are monoatomic - leaving 4 for Mogul analysis.

In the following table, the Counts columns list the number of bonds (or angles) for which Mogul statistics could be retrieved, the number of bonds (or angles) that are observed in the model and the number of bonds (or angles) that are defined in the Chemical Component Dictionary. The Link column lists molecule types, if any, to which the group is linked. The Z score for a bond

length (or angle) is the number of standard deviations the observed value is removed from the expected value. A bond length (or angle) with  $|Z| > 2$  is considered an outlier worth inspection. RMSZ is the root-mean-square of all Z scores of the bond lengths (or angles).

Mol	Type	Chain	Res	Link	Bond lengths			Bond angles		
					Counts	RMSZ	# Z  > 2	Counts	RMSZ	# Z  > 2
3	I3P	A	3002	-	24,24,24	1.35	3 (12%)	39,39,39	0.84	0
3	I3P	B	3002	-	24,24,24	1.34	3 (12%)	39,39,39	0.83	0
3	I3P	D	3002	-	24,24,24	1.34	3 (12%)	39,39,39	0.83	0
3	I3P	C	3002	-	24,24,24	1.34	3 (12%)	39,39,39	0.83	0

In the following table, the Chirals column lists the number of chiral outliers, the number of chiral centers analysed, the number of these observed in the model and the number defined in the Chemical Component Dictionary. Similar counts are reported in the Torsion and Rings columns. '-' means no outliers of that kind were identified.

Mol	Type	Chain	Res	Link	Chirals	Torsions	Rings
3	I3P	A	3002	-	-	2/15/39/39	0/1/1/1
3	I3P	B	3002	-	-	2/15/39/39	0/1/1/1
3	I3P	D	3002	-	-	2/15/39/39	0/1/1/1
3	I3P	C	3002	-	-	2/15/39/39	0/1/1/1

The worst 5 of 12 bond length outliers are listed below:

Mol	Chain	Res	Type	Atoms	Z	Observed(Å)	Ideal(Å)
3	D	3002	I3P	P1-O1	3.31	1.65	1.59
3	A	3002	I3P	P1-O1	3.29	1.65	1.59
3	A	3002	I3P	P4-O4	3.29	1.65	1.59
3	C	3002	I3P	P4-O4	3.28	1.65	1.59
3	B	3002	I3P	P5-O5	3.26	1.65	1.59

There are no bond angle outliers.

There are no chirality outliers.

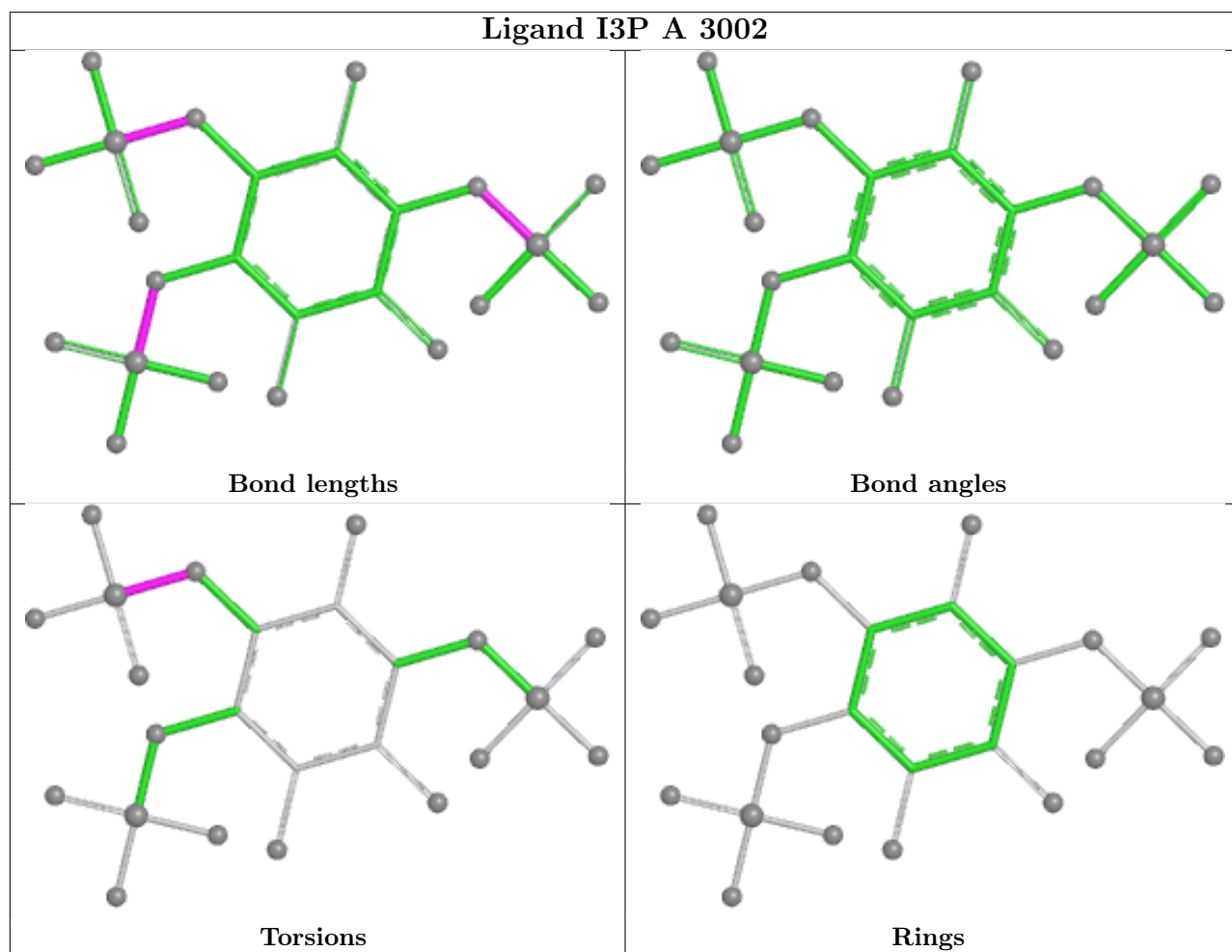
5 of 8 torsion outliers are listed below:

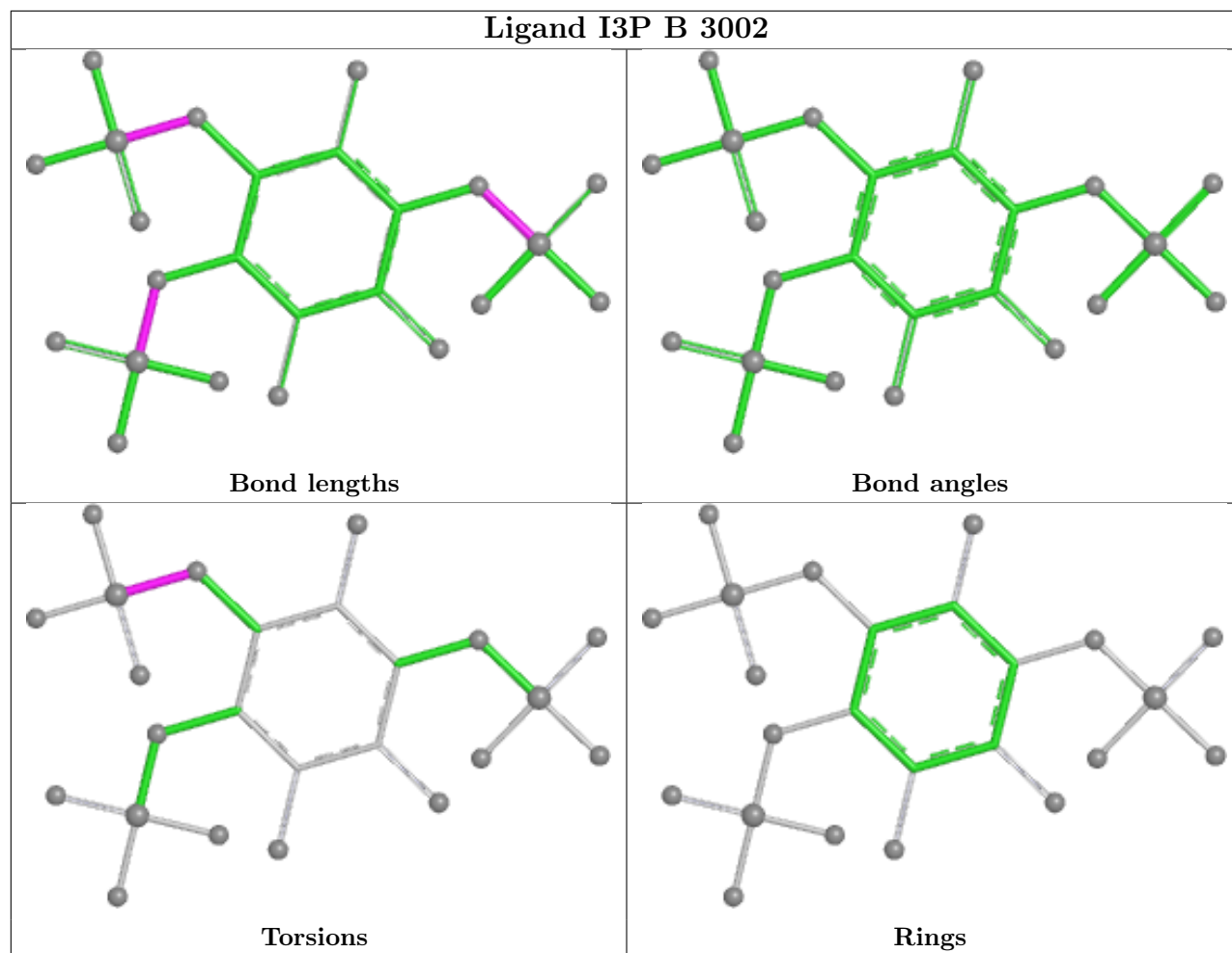
Mol	Chain	Res	Type	Atoms
3	A	3002	I3P	C5-O5-P5-O51
3	B	3002	I3P	C5-O5-P5-O51
3	C	3002	I3P	C5-O5-P5-O51
3	D	3002	I3P	C5-O5-P5-O51
3	A	3002	I3P	C5-O5-P5-O53

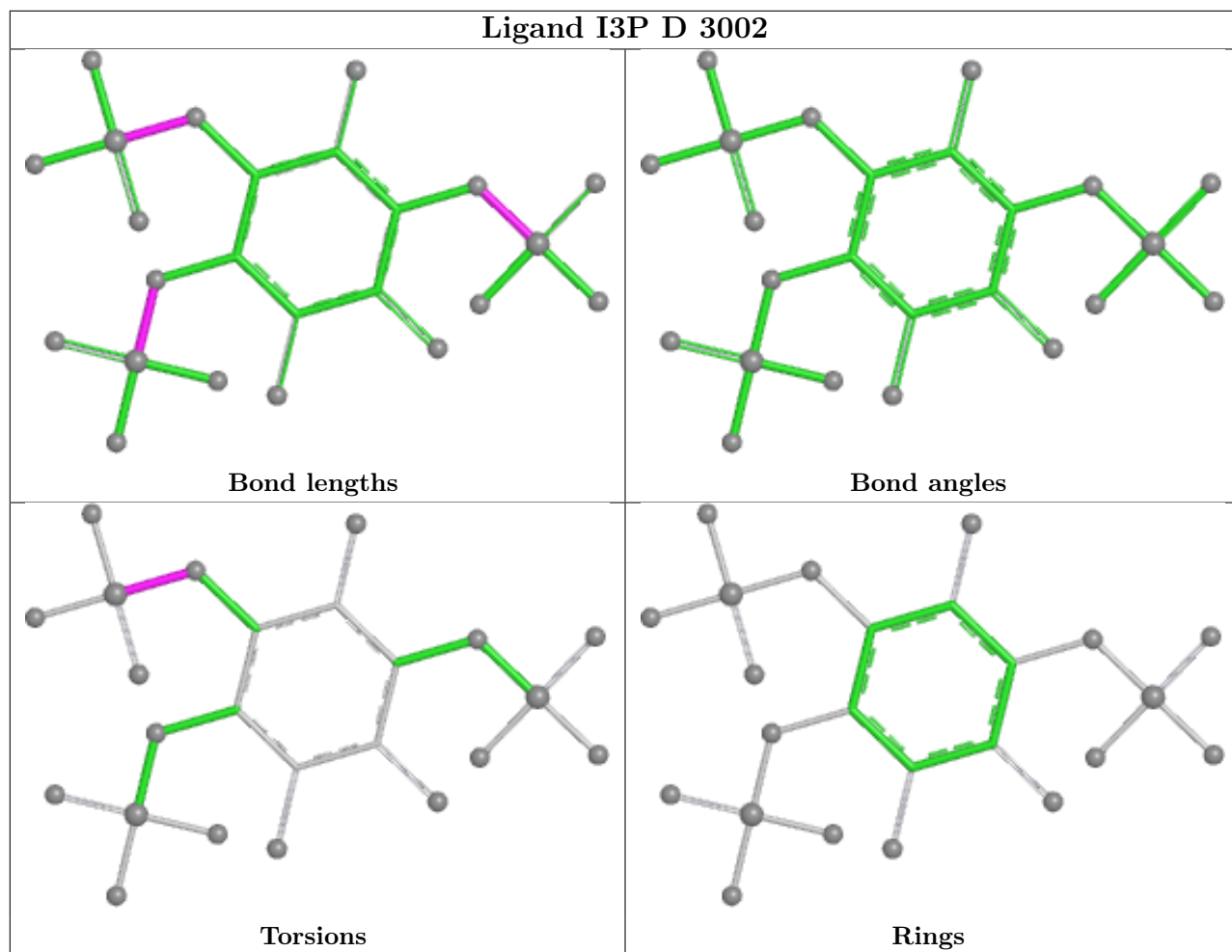
There are no ring outliers.

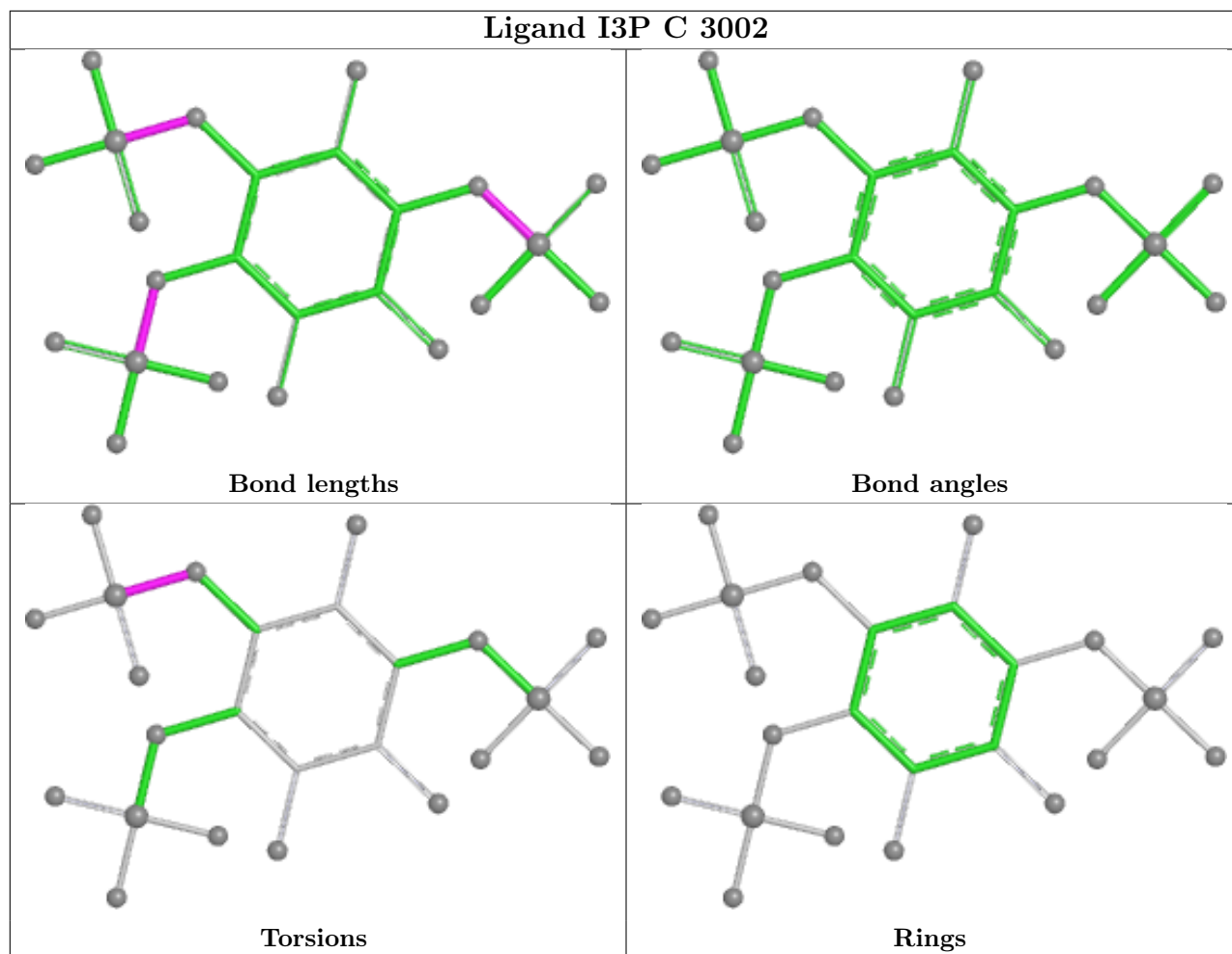
No monomer is involved in short contacts.

The following is a two-dimensional graphical depiction of Mogul quality analysis of bond lengths, bond angles, torsion angles, and ring geometry for all instances of the Ligand of Interest. In addition, ligands with molecular weight > 250 and outliers as shown on the validation Tables will also be included. For torsion angles, if less than 5% of the Mogul distribution of torsion angles is within 10 degrees of the torsion angle in question, then that torsion angle is considered an outlier. Any bond that is central to one or more torsion angles identified as an outlier by Mogul will be highlighted in the graph. For rings, the root-mean-square deviation (RMSD) between the ring in question and similar rings identified by Mogul is calculated over all ring torsion angles. If the average RMSD is greater than 60 degrees and the minimal RMSD between the ring in question and any Mogul-identified rings is also greater than 60 degrees, then that ring is considered an outlier. The outliers are highlighted in purple. The color gray indicates Mogul did not find sufficient equivalents in the CSD to analyse the geometry.









#### 4.7 Other polymers [i](#)

There are no such residues in this entry.

#### 4.8 Polymer linkage issues [i](#)

The following chains have linkage breaks:

Mol	Chain	Number of breaks
1	A	5
1	B	5
1	C	5
1	D	5

The worst 5 of 20 chain breaks are listed below:

Model	Chain	Residue-1	Atom-1	Residue-2	Atom-2	Distance (Å)
1	A	1552:GLN	C	1586:TRP	N	56.29

*Continued on next page...*

*Continued from previous page...*

Model	Chain	Residue-1	Atom-1	Residue-2	Atom-2	Distance (Å)
1	B	1552:GLN	C	1586:TRP	N	56.29
1	C	1552:GLN	C	1586:TRP	N	56.29
1	D	1552:GLN	C	1586:TRP	N	56.29
1	A	1533:THR	C	1541:ARG	N	17.36

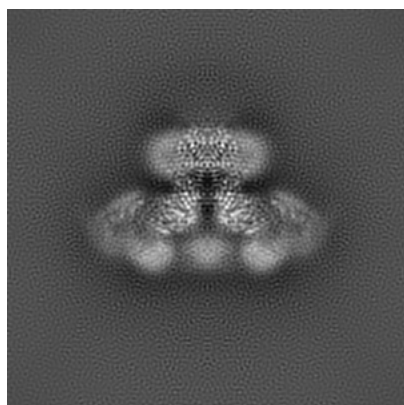
## 5 Map visualisation [i](#)

This section contains visualisations of the EMDB entry EMD-7994. These allow visual inspection of the internal detail of the map and identification of artifacts.

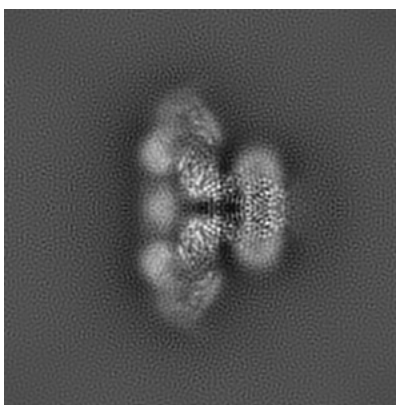
No raw map or half-maps were deposited for this entry and therefore no images, graphs, etc. pertaining to the raw map can be shown.

### 5.1 Orthogonal projections [i](#)

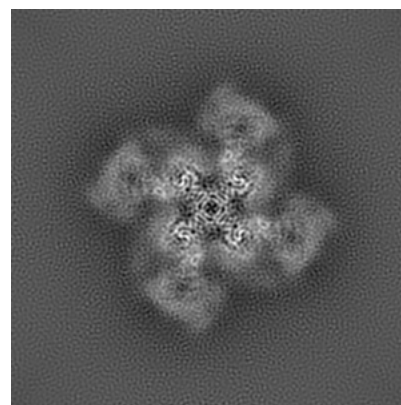
#### 5.1.1 Primary map



X



Y

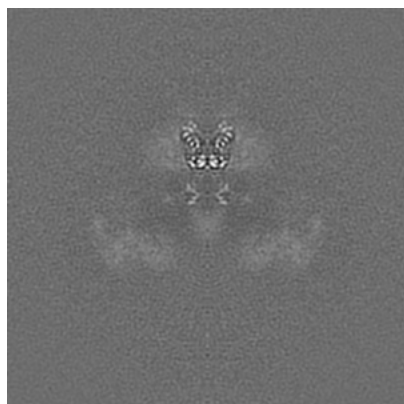


Z

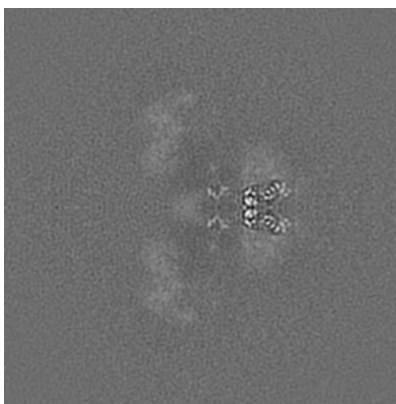
The images above show the map projected in three orthogonal directions.

### 5.2 Central slices [i](#)

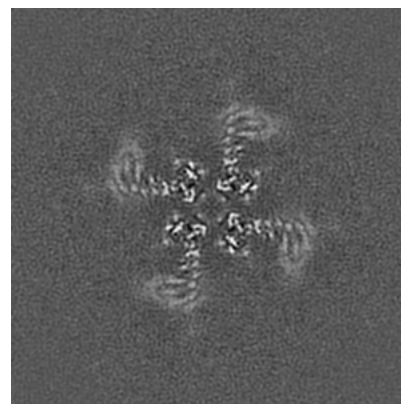
#### 5.2.1 Primary map



X Index: 192



Y Index: 192

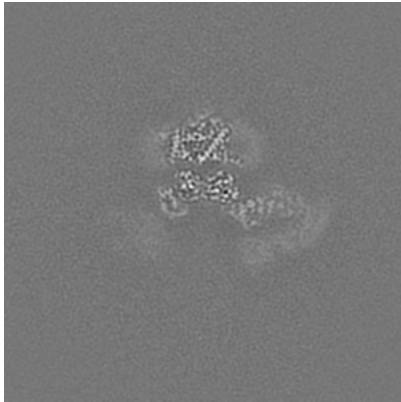


Z Index: 192

The images above show central slices of the map in three orthogonal directions.

## 5.3 Largest variance slices [i](#)

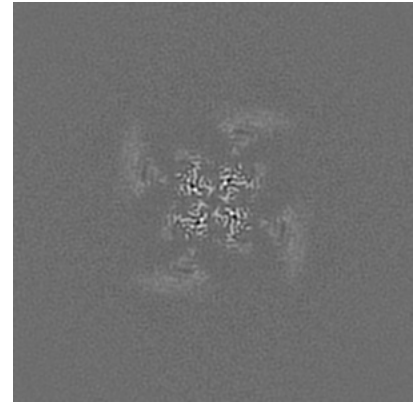
### 5.3.1 Primary map



X Index: 207



Y Index: 177

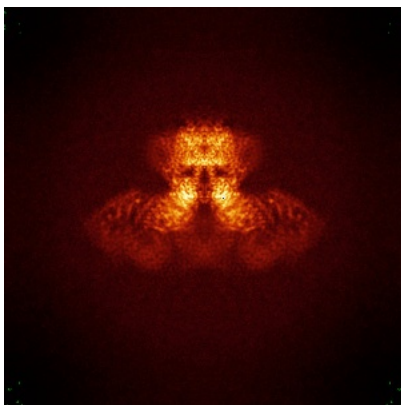


Z Index: 201

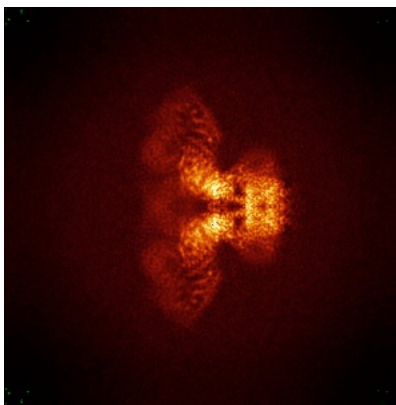
The images above show the largest variance slices of the map in three orthogonal directions.

## 5.4 Orthogonal standard-deviation projections (False-color) [i](#)

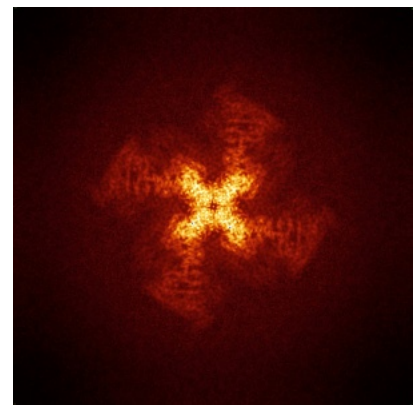
### 5.4.1 Primary map



X



Y

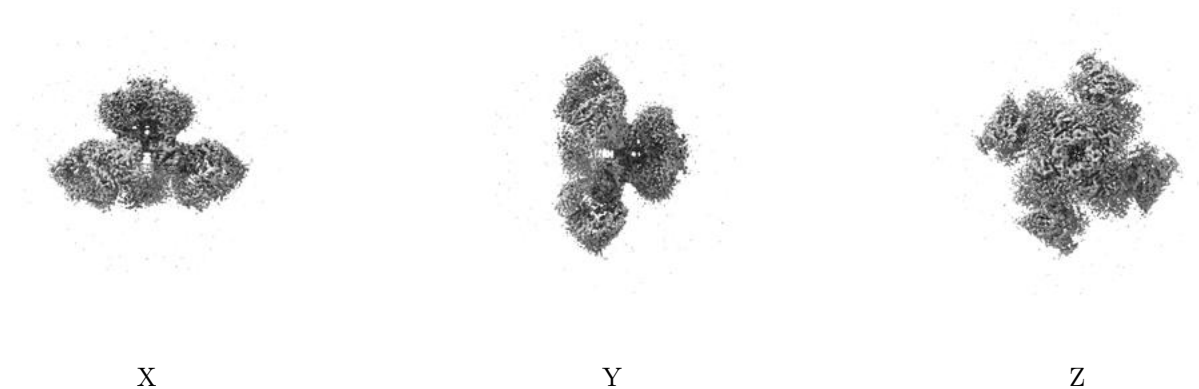


Z

The images above show the map standard deviation projections with false color in three orthogonal directions. Minimum values are shown in green, max in blue, and dark to light orange shades represent small to large values respectively.

## 5.5 Orthogonal surface views [i](#)

### 5.5.1 Primary map



The images above show the 3D surface view of the map at the recommended contour level 3.0. These images, in conjunction with the slice images, may facilitate assessment of whether an appropriate contour level has been provided.

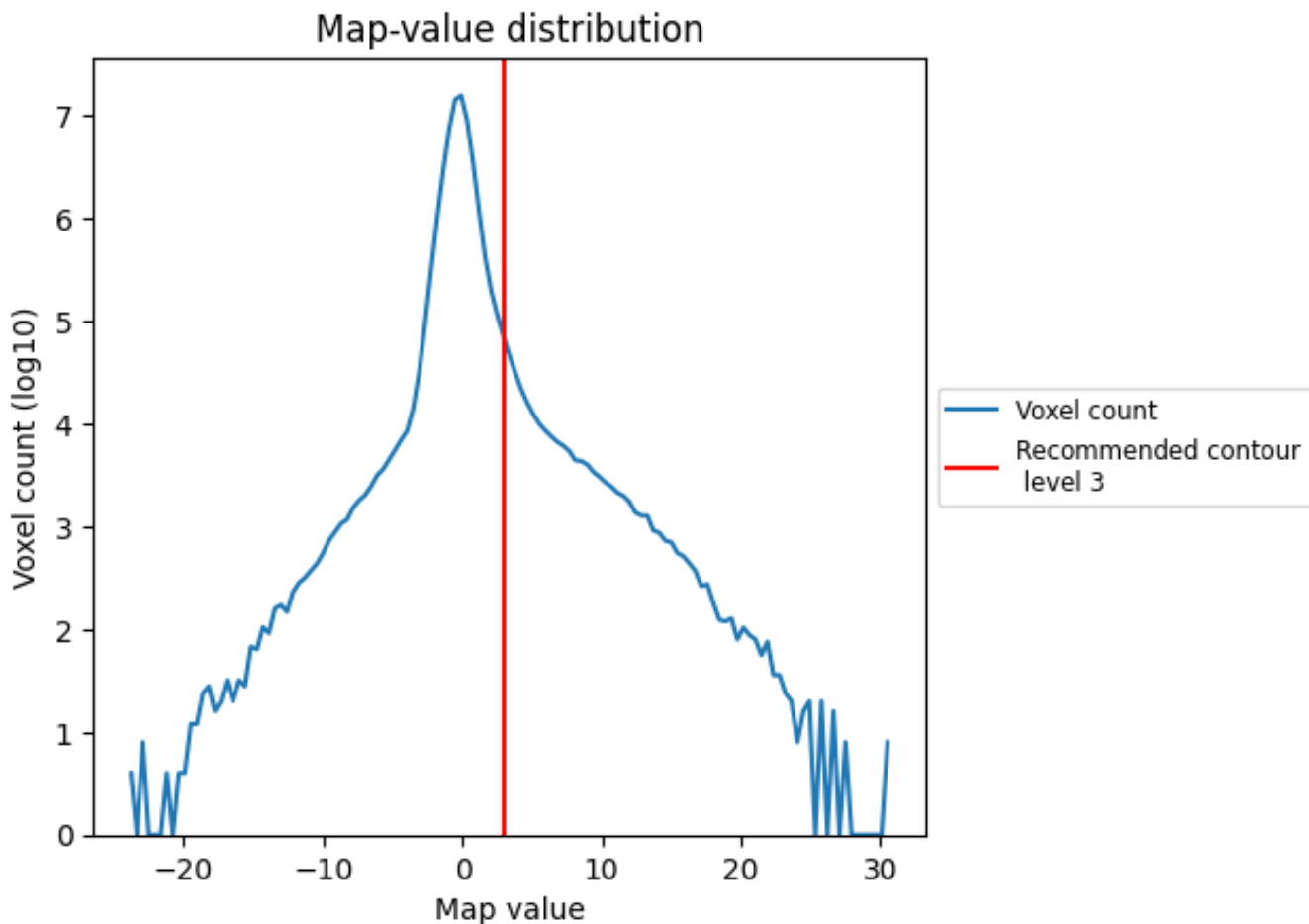
## 5.6 Mask visualisation [i](#)

This section was not generated. No masks/segmentation were deposited.

## 6 Map analysis [i](#)

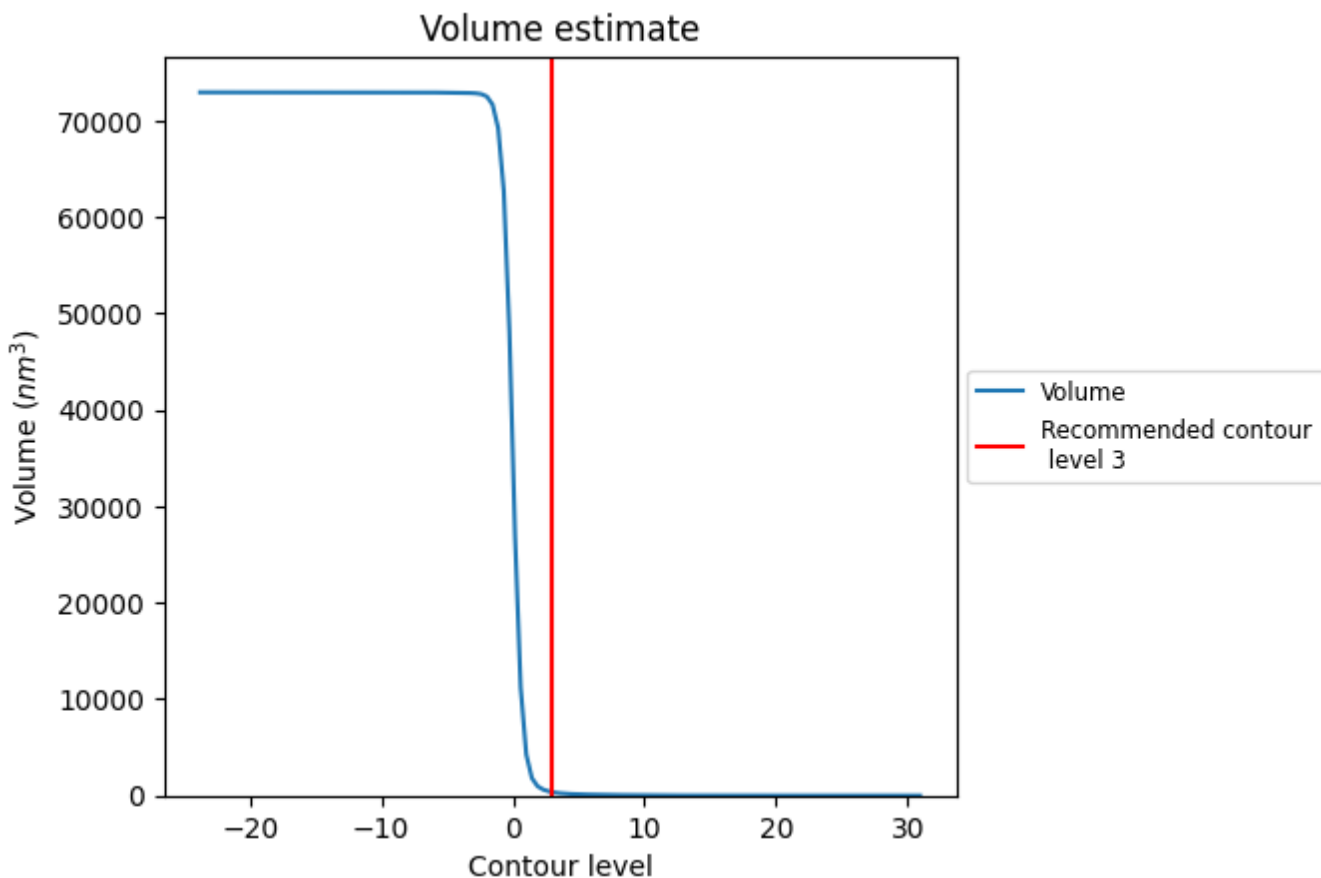
This section contains the results of statistical analysis of the map.

### 6.1 Map-value distribution [i](#)



The map-value distribution is plotted in 128 intervals along the x-axis. The y-axis is logarithmic. A spike in this graph at zero usually indicates that the volume has been masked.

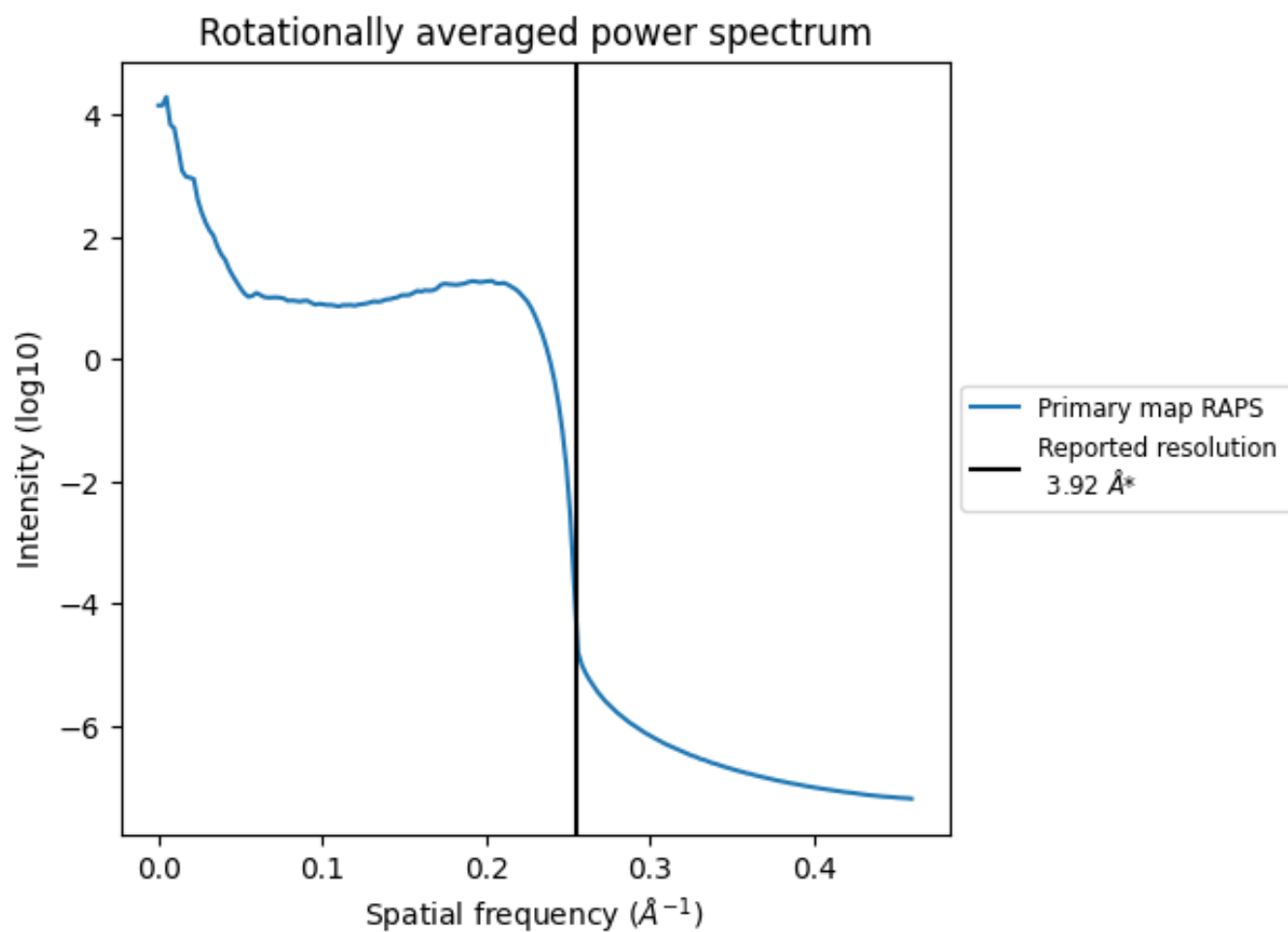
## 6.2 Volume estimate [i](#)



The volume at the recommended contour level is 362 nm<sup>3</sup>; this corresponds to an approximate mass of 327 kDa.

The volume estimate graph shows how the enclosed volume varies with the contour level. The recommended contour level is shown as a vertical line and the intersection between the line and the curve gives the volume of the enclosed surface at the given level.

### 6.3 Rotationally averaged power spectrum [i](#)



\*Reported resolution corresponds to spatial frequency of  $0.255 \text{\AA}^{-1}$

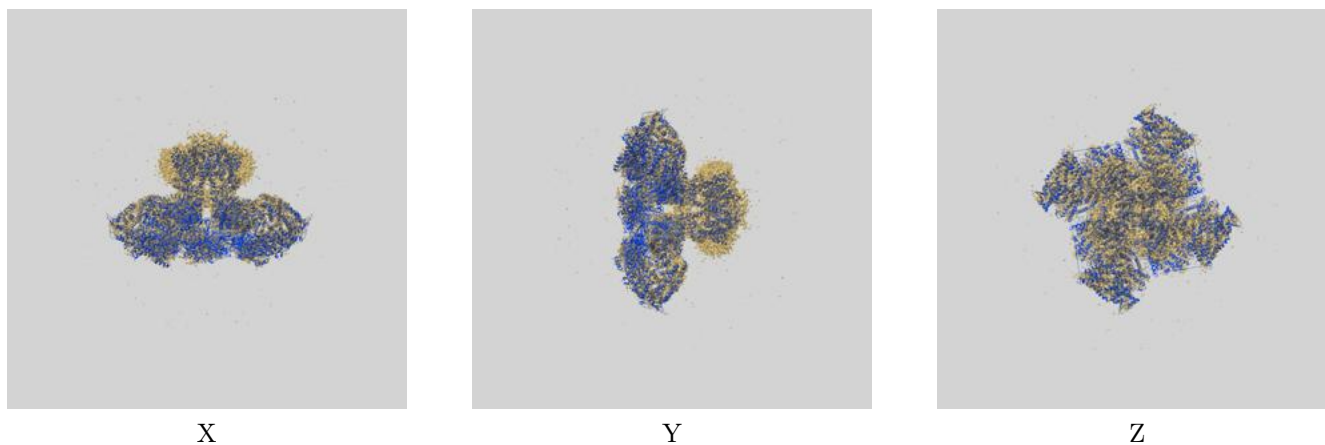
## 7 Fourier-Shell correlation

This section was not generated. No FSC curve or half-maps provided.

## 8 Map-model fit [i](#)

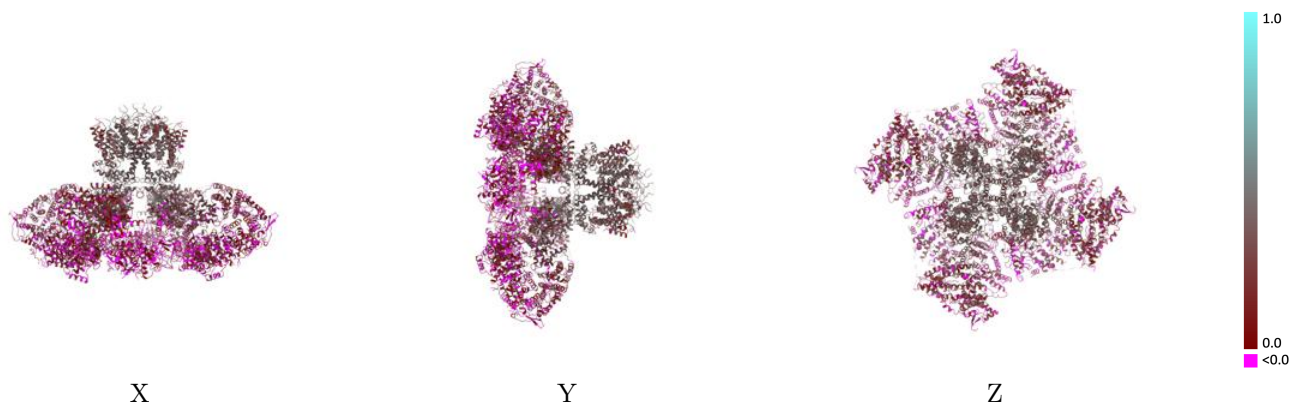
This section contains information regarding the fit between EMDB map EMD-7994 and PDB model 6DRC. Per-residue inclusion information can be found in section ?? on page ??.

### 8.1 Map-model overlay [i](#)



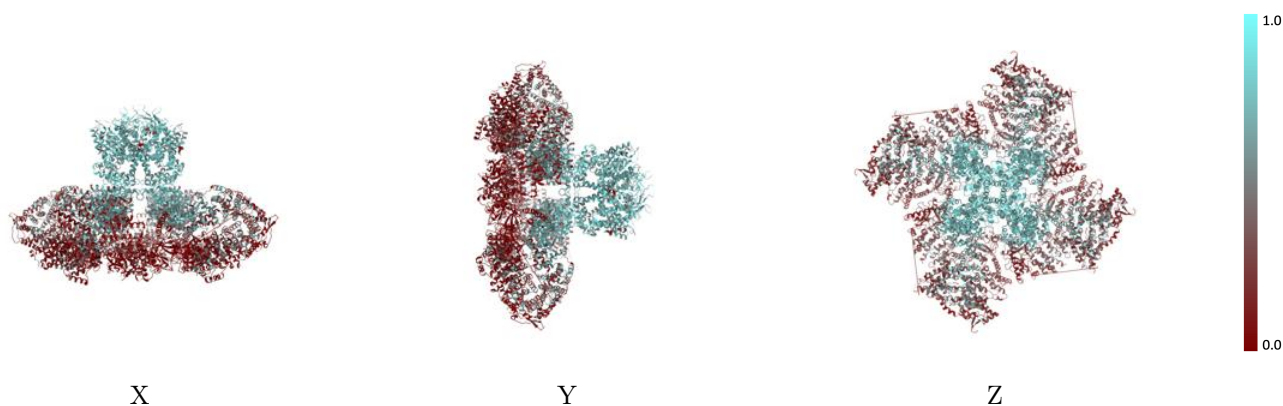
The images above show the 3D surface view of the map at the recommended contour level 3.0 at 50% transparency in yellow overlaid with a ribbon representation of the model coloured in blue. These images allow for the visual assessment of the quality of fit between the atomic model and the map.

## 8.2 Q-score mapped to coordinate model [i](#)



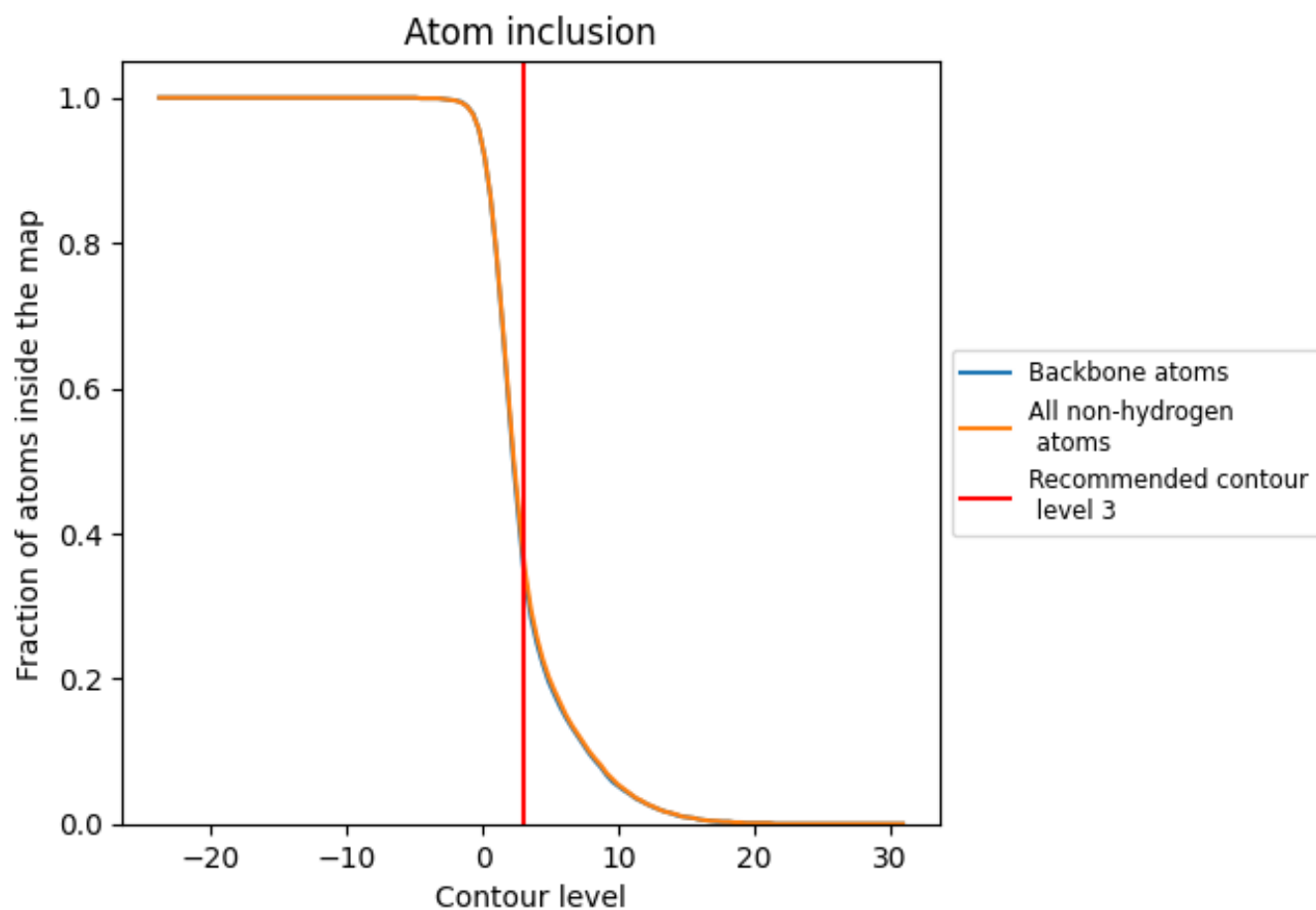
The images above show the model with each residue coloured according to its Q-score. This shows their resolvability in the map with higher Q-score values reflecting better resolvability. Please note: Q-score is calculating the resolvability of atoms, and thus high values are only expected at resolutions at which atoms can be resolved. Low Q-score values may therefore be expected for many entries.

## 8.3 Atom inclusion mapped to coordinate model [i](#)



The images above show the model with each residue coloured according to its atom inclusion. This shows to what extent they are inside the map at the recommended contour level (3).











## 8.4 Atom inclusion [i](#)



At the recommended contour level, 36% of all backbone atoms, 37% of all non-hydrogen atoms, are inside the map.

## 8.5 Map-model fit summary [i](#)

The table lists the average atom inclusion at the recommended contour level (3) and Q-score for the entire model and for each chain.

Chain	Atom inclusion	Q-score
All	 0.3700	 0.1790
A	 0.3770	 0.1790
B	 0.3770	 0.1790
C	 0.3760	 0.1790
D	 0.3770	 0.1790

