



## wwPDB EM Validation Summary Report ⓘ

Mar 6, 2026 – 05:39 AM UTC

PDB ID : 8DR0 / pdb\_00008dr0  
EMDB ID : EMD-27667  
Title : Closed state of RFC:PCNA bound to a 3' ss/dsDNA junction  
Authors : Schrecker, M.; Hite, R.K.  
Deposited on : 2022-07-20  
Resolution : 2.42 Å (reported)

This is a wwPDB EM Validation Summary Report for a publicly released PDB entry.

We welcome your comments at [validation@mail.wwpdb.org](mailto:validation@mail.wwpdb.org)

A user guide is available at

<https://www.wwpdb.org/validation/2017/EMValidationReportHelp>

with specific help available everywhere you see the ⓘ symbol.

The types of validation reports are described at

<http://www.wwpdb.org/validation/2017/FAQs#types>.

---

The following versions of software and data (see [references ⓘ](#)) were used in the production of this report:

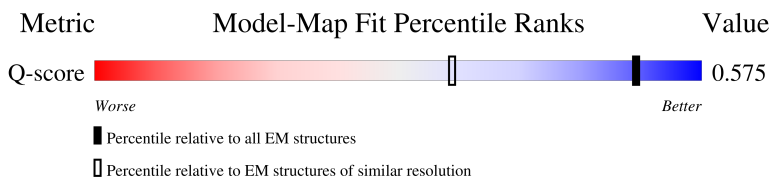
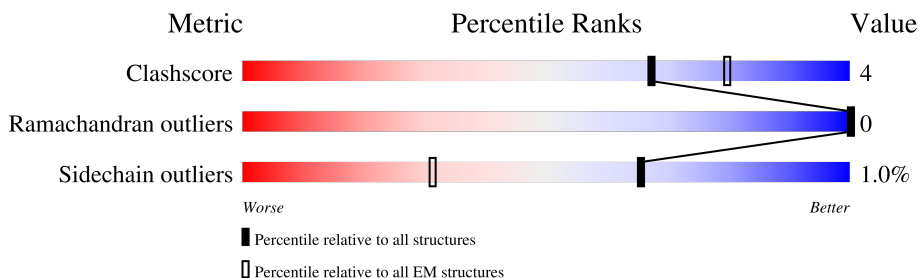
EMDB validation analysis : 0.0.1.dev132  
Mogul : 2022.3.0, CSD as543be (2022)  
MolProbity : 4-5-2 with Phenix2.0  
Buster-report : wwPDB partial adaption of 1.1.7 (2018)  
Percentile statistics : 20250101.v01 (using entries in the PDB archive January 1st 2025)  
EM percentile statistics : 202505.v01 (Using data in the EMDB archive up until May 2025)  
MapQ : 1.9.13  
Ideal geometry (proteins) : Engh & Huber (2001)  
Ideal geometry (DNA, RNA) : Parkinson et al. (1996)  
Validation Pipeline (wwPDB-VP) : 2.49

# 1 Overall quality at a glance

The following experimental techniques were used to determine the structure:  
*ELECTRON MICROSCOPY*

The reported resolution of this entry is 2.42 Å.

Percentile scores (ranging between 0-100) for global validation metrics of the entry are shown in the following graphic. The table shows the number of entries on which the scores are based.







Metric	Whole archive (#Entries)	EM structures (#Entries)	Similar EM resolution (#Entries, resolution range(Å))
Clashscore	229148	23984	-
Ramachandran outliers	224038	23583	-
Sidechain outliers	223484	23102	-
Q-score	-	25397	5729 ( 1.92 - 2.92 )

The table below summarises the geometric issues observed across the polymeric chains and their fit to the map. The red, orange, yellow and green segments of the bar indicate the fraction of residues that contain outliers for  $\geq 3$ , 2, 1 and 0 types of geometric quality criteria respectively. A grey segment represents the fraction of residues that are not modelled. The numeric value for each fraction is indicated below the corresponding segment, with a dot representing fractions  $\leq 5\%$ . The upper red bar (where present) indicates the fraction of residues that have poor fit to the EM map (all-atom inclusion  $< 40\%$ ). The numeric value is given above the bar.

Mol	Chain	Length	Quality of chain
1	A	918	48% (green), 5% (yellow), 46% (grey)
2	B	323	92% (green), 6% (yellow), 2% (grey)
3	C	339	89% (green), 8% (yellow), 3% (grey)
4	D	353	90% (green), 7% (yellow), 3% (grey)

Continued on next page...

*Continued from previous page...*

Mol	Chain	Length	Quality of chain
5	E	354	
6	F	277	
6	G	277	
6	H	277	
7	I	22	
8	J	18	

## 2 Entry composition i

There are 11 unique types of molecules in this entry. The entry contains 42950 atoms, of which 21436 are hydrogens and 0 are deuteriums.

In the tables below, the AltConf column contains the number of residues with at least one atom in alternate conformation and the Trace column contains the number of residues modelled with at most 2 atoms.

- Molecule 1 is a protein called Replication factor C subunit 1.

Mol	Chain	Residues	Atoms					AltConf	Trace	
			Total	C	H	N	O			S
1	A	492	7836	2474	3944	682	718	18	0	0

There are 57 discrepancies between the modelled and reference sequences:

Chain	Residue	Modelled	Actual	Comment	Reference
A	862	GLY	-	expression tag	UNP P38630
A	863	LEU	-	expression tag	UNP P38630
A	864	ASN	-	expression tag	UNP P38630
A	865	GLU	-	expression tag	UNP P38630
A	866	ASN	-	expression tag	UNP P38630
A	867	LEU	-	expression tag	UNP P38630
A	868	TYR	-	expression tag	UNP P38630
A	869	PHE	-	expression tag	UNP P38630
A	870	GLN	-	expression tag	UNP P38630
A	871	GLY	-	expression tag	UNP P38630
A	872	GLY	-	expression tag	UNP P38630
A	873	GLY	-	expression tag	UNP P38630
A	874	ASP	-	expression tag	UNP P38630
A	875	TYR	-	expression tag	UNP P38630
A	876	LYS	-	expression tag	UNP P38630
A	877	ASP	-	expression tag	UNP P38630
A	878	ASP	-	expression tag	UNP P38630
A	879	ASP	-	expression tag	UNP P38630
A	880	ASP	-	expression tag	UNP P38630
A	881	LYS	-	expression tag	UNP P38630
A	882	ASP	-	expression tag	UNP P38630
A	883	TYR	-	expression tag	UNP P38630
A	884	LYS	-	expression tag	UNP P38630
A	885	ASP	-	expression tag	UNP P38630
A	886	ASP	-	expression tag	UNP P38630
A	887	ASP	-	expression tag	UNP P38630
A	888	ASP	-	expression tag	UNP P38630
A	889	LYS	-	expression tag	UNP P38630

*Continued on next page...*

Continued from previous page...

Chain	Residue	Modelled	Actual	Comment	Reference
A	890	ASP	-	expression tag	UNP P38630
A	891	TYR	-	expression tag	UNP P38630
A	892	LYS	-	expression tag	UNP P38630
A	893	ASP	-	expression tag	UNP P38630
A	894	ASP	-	expression tag	UNP P38630
A	895	ASP	-	expression tag	UNP P38630
A	896	ASP	-	expression tag	UNP P38630
A	897	LYS	-	expression tag	UNP P38630
A	898	GLY	-	expression tag	UNP P38630
A	899	GLY	-	expression tag	UNP P38630
A	900	LYS	-	expression tag	UNP P38630
A	901	ASP	-	expression tag	UNP P38630
A	902	HIS	-	expression tag	UNP P38630
A	903	LEU	-	expression tag	UNP P38630
A	904	ILE	-	expression tag	UNP P38630
A	905	HIS	-	expression tag	UNP P38630
A	906	ASN	-	expression tag	UNP P38630
A	907	VAL	-	expression tag	UNP P38630
A	908	HIS	-	expression tag	UNP P38630
A	909	LYS	-	expression tag	UNP P38630
A	910	GLU	-	expression tag	UNP P38630
A	911	GLU	-	expression tag	UNP P38630
A	912	HIS	-	expression tag	UNP P38630
A	913	ALA	-	expression tag	UNP P38630
A	914	HIS	-	expression tag	UNP P38630
A	915	ALA	-	expression tag	UNP P38630
A	916	HIS	-	expression tag	UNP P38630
A	917	ASN	-	expression tag	UNP P38630
A	918	LYS	-	expression tag	UNP P38630

- Molecule 2 is a protein called Replication factor C subunit 4.

Mol	Chain	Residues	Atoms					AltConf	Trace	
			Total	C	H	N	O			S
2	B	318	5084	1574	2588	444	465	13	0	0

- Molecule 3 is a protein called Replication factor C subunit 3.

Mol	Chain	Residues	Atoms					AltConf	Trace	
			Total	C	H	N	O			S
3	C	330	5254	1643	2643	458	502	8	0	0

There is a discrepancy between the modelled and reference sequences:

Chain	Residue	Modelled	Actual	Comment	Reference
C	?	-	VAL	deletion	UNP P38629

- Molecule 4 is a protein called Replication factor C subunit 2.

Mol	Chain	Residues	Atoms					AltConf	Trace	
			Total	C	H	N	O			S
4	D	344	5464	1714	2750	469	521	10	0	0

- Molecule 5 is a protein called Replication factor C subunit 5.

Mol	Chain	Residues	Atoms					AltConf	Trace	
			Total	C	H	N	O			S
5	E	354	5698	1765	2906	485	524	18	0	0

- Molecule 6 is a protein called Proliferating cell nuclear antigen.

Mol	Chain	Residues	Atoms					AltConf	Trace	
			Total	C	H	N	O			S
6	F	258	4055	1291	2034	319	401	10	0	0
6	G	257	4047	1287	2033	318	399	10	0	0
6	H	255	4023	1280	2022	315	396	10	0	0

There are 57 discrepancies between the modelled and reference sequences:

Chain	Residue	Modelled	Actual	Comment	Reference
F	-18	MET	-	expression tag	UNP A0A6B7JGY6
F	-17	GLY	-	expression tag	UNP A0A6B7JGY6
F	-16	SER	-	expression tag	UNP A0A6B7JGY6
F	-15	SER	-	expression tag	UNP A0A6B7JGY6
F	-14	HIS	-	expression tag	UNP A0A6B7JGY6
F	-13	HIS	-	expression tag	UNP A0A6B7JGY6
F	-12	HIS	-	expression tag	UNP A0A6B7JGY6
F	-11	HIS	-	expression tag	UNP A0A6B7JGY6
F	-10	HIS	-	expression tag	UNP A0A6B7JGY6
F	-9	HIS	-	expression tag	UNP A0A6B7JGY6
F	-8	SER	-	expression tag	UNP A0A6B7JGY6
F	-7	SER	-	expression tag	UNP A0A6B7JGY6
F	-6	GLY	-	expression tag	UNP A0A6B7JGY6
F	-5	LEU	-	expression tag	UNP A0A6B7JGY6

*Continued on next page...*

*Continued from previous page...*

Chain	Residue	Modelled	Actual	Comment	Reference
F	-4	VAL	-	expression tag	UNP A0A6B7JGY6
F	-3	PRO	-	expression tag	UNP A0A6B7JGY6
F	-2	ARG	-	expression tag	UNP A0A6B7JGY6
F	-1	ALA	-	expression tag	UNP A0A6B7JGY6
F	0	SER	-	expression tag	UNP A0A6B7JGY6
G	-18	MET	-	expression tag	UNP A0A6B7JGY6
G	-17	GLY	-	expression tag	UNP A0A6B7JGY6
G	-16	SER	-	expression tag	UNP A0A6B7JGY6
G	-15	SER	-	expression tag	UNP A0A6B7JGY6
G	-14	HIS	-	expression tag	UNP A0A6B7JGY6
G	-13	HIS	-	expression tag	UNP A0A6B7JGY6
G	-12	HIS	-	expression tag	UNP A0A6B7JGY6
G	-11	HIS	-	expression tag	UNP A0A6B7JGY6
G	-10	HIS	-	expression tag	UNP A0A6B7JGY6
G	-9	HIS	-	expression tag	UNP A0A6B7JGY6
G	-8	SER	-	expression tag	UNP A0A6B7JGY6
G	-7	SER	-	expression tag	UNP A0A6B7JGY6
G	-6	GLY	-	expression tag	UNP A0A6B7JGY6
G	-5	LEU	-	expression tag	UNP A0A6B7JGY6
G	-4	VAL	-	expression tag	UNP A0A6B7JGY6
G	-3	PRO	-	expression tag	UNP A0A6B7JGY6
G	-2	ARG	-	expression tag	UNP A0A6B7JGY6
G	-1	ALA	-	expression tag	UNP A0A6B7JGY6
G	0	SER	-	expression tag	UNP A0A6B7JGY6
H	-18	MET	-	expression tag	UNP A0A6B7JGY6
H	-17	GLY	-	expression tag	UNP A0A6B7JGY6
H	-16	SER	-	expression tag	UNP A0A6B7JGY6
H	-15	SER	-	expression tag	UNP A0A6B7JGY6
H	-14	HIS	-	expression tag	UNP A0A6B7JGY6
H	-13	HIS	-	expression tag	UNP A0A6B7JGY6
H	-12	HIS	-	expression tag	UNP A0A6B7JGY6
H	-11	HIS	-	expression tag	UNP A0A6B7JGY6
H	-10	HIS	-	expression tag	UNP A0A6B7JGY6
H	-9	HIS	-	expression tag	UNP A0A6B7JGY6
H	-8	SER	-	expression tag	UNP A0A6B7JGY6
H	-7	SER	-	expression tag	UNP A0A6B7JGY6
H	-6	GLY	-	expression tag	UNP A0A6B7JGY6
H	-5	LEU	-	expression tag	UNP A0A6B7JGY6
H	-4	VAL	-	expression tag	UNP A0A6B7JGY6
H	-3	PRO	-	expression tag	UNP A0A6B7JGY6
H	-2	ARG	-	expression tag	UNP A0A6B7JGY6
H	-1	ALA	-	expression tag	UNP A0A6B7JGY6

*Continued on next page...*

Continued from previous page...

Chain	Residue	Modelled	Actual	Comment	Reference
H	0	SER	-	expression tag	UNP A0A6B7JGY6

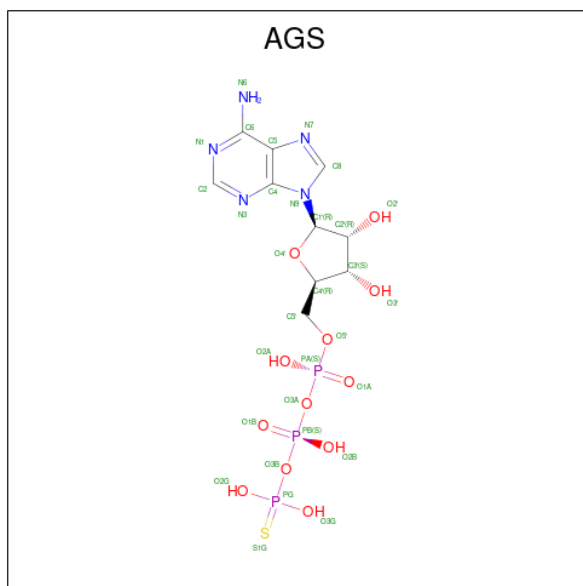
- Molecule 7 is a DNA chain called DNA (5'-D(P\*TP\*TP\*TP\*TP\*TP\*TP\*CP\*GP\*GP\*GP\*GP\*GP\*GP\*CP\*CP\*CP\*CP\*GP\*GP\*GP\*G)-3').

Mol	Chain	Residues	Atoms						AltConf	Trace
			Total	C	H	N	O	P		
7	I	22	706	215	249	82	138	22	0	0

- Molecule 8 is a DNA chain called DNA (5'-D(P\*CP\*CP\*CP\*CP\*GP\*GP\*GP\*GP\*CP\*CP\*CP\*CP\*CP\*CP\*CP\*GP\*GP\*C)-3').

Mol	Chain	Residues	Atoms						AltConf	Trace
			Total	C	H	N	O	P		
8	J	18	559	168	199	66	108	18	0	0

- Molecule 9 is PHOSPHOTHIOPHOSPHORIC ACID-ADENYLATE ESTER (CCD ID: AGS) (formula: C<sub>10</sub>H<sub>16</sub>N<sub>5</sub>O<sub>12</sub>P<sub>3</sub>S) (labeled as "Ligand of Interest" by depositor).



Mol	Chain	Residues	Atoms							AltConf
			Total	C	H	N	O	P	S	
9	A	1	45	10	14	5	12	3	1	0
9	B	1	45	10	14	5	12	3	1	0
9	C	1	45	10	14	5	12	3	1	0

Continued on next page...

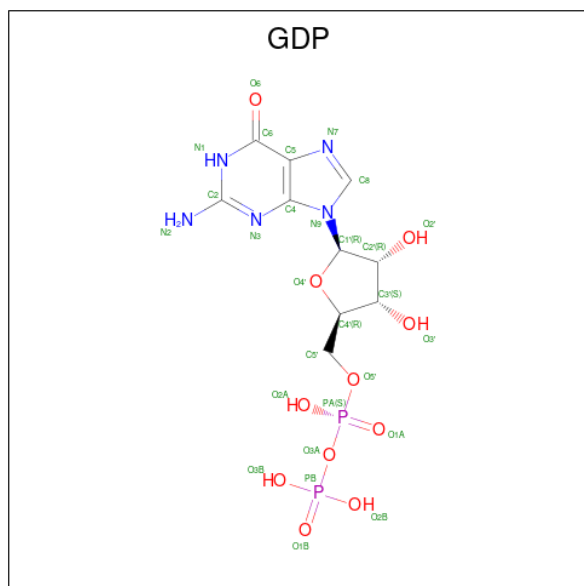
Continued from previous page...

Mol	Chain	Residues	Atoms						AltConf	
			Total	C	H	N	O	P		S
9	D	1	45	10	14	5	12	3	1	0


- Molecule 10 is MAGNESIUM ION (CCD ID: MG) (formula: Mg) (labeled as "Ligand of Interest" by depositor).

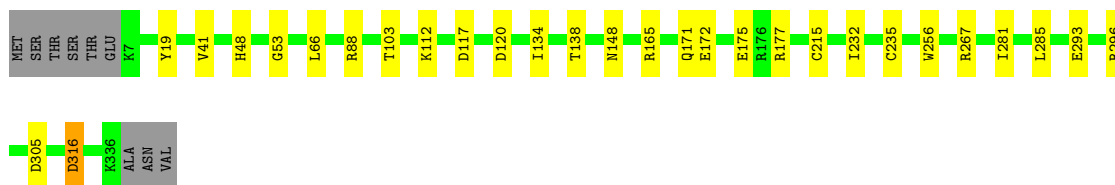
Mol	Chain	Residues	Atoms		AltConf
			Total	Mg	
10	A	1	1	1	0
10	B	1	1	1	0
10	C	1	1	1	0
10	D	1	1	1	0

- Molecule 11 is GUANOSINE-5'-DIPHOSPHATE (CCD ID: GDP) (formula: C<sub>10</sub>H<sub>15</sub>N<sub>5</sub>O<sub>11</sub>P<sub>2</sub>) (labeled as "Ligand of Interest" by depositor).




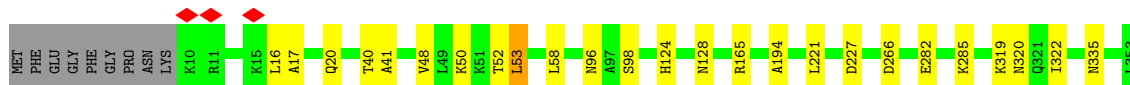


Chain C:  89% 8%




- Molecule 4: Replication factor C subunit 2

Chain D:  90% 7%




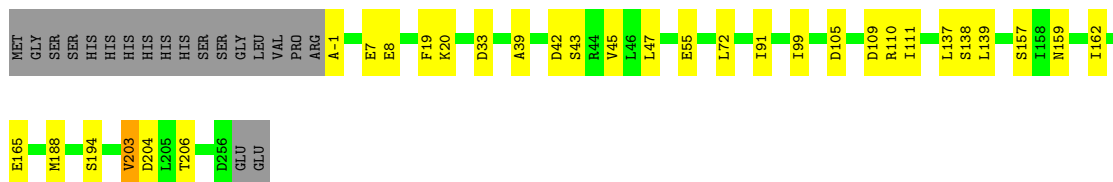
- Molecule 5: Replication factor C subunit 5

Chain E:  92% 8%




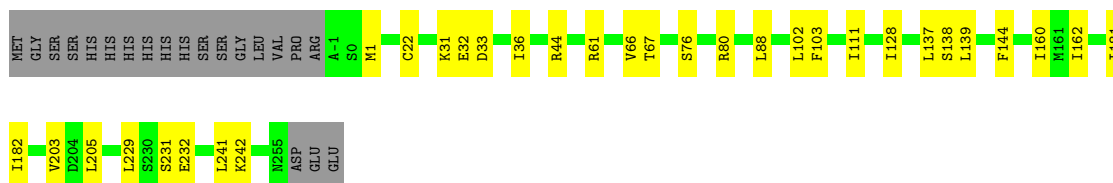
- Molecule 6: Proliferating cell nuclear antigen

Chain F:  82% 11% 7%




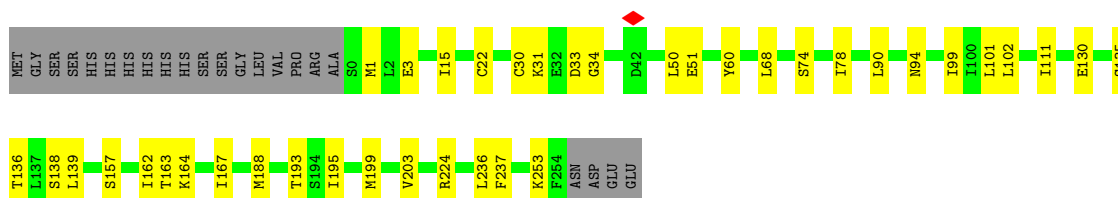
- Molecule 6: Proliferating cell nuclear antigen

Chain G:  81% 12% 7%

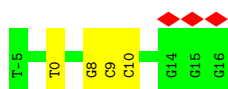
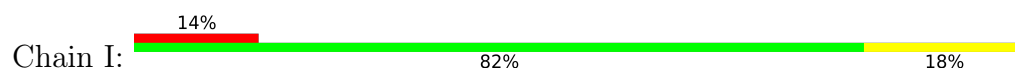


- Molecule 6: Proliferating cell nuclear antigen

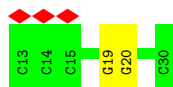
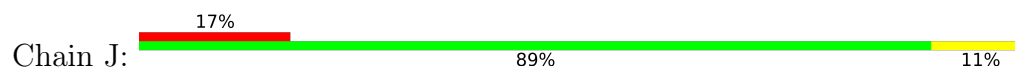
Chain H:  78% 14% 8%



- Molecule 7: DNA (5'-D(P\*TP\*TP\*TP\*TP\*TP\*TP\*CP\*GP\*GP\*GP\*GP\*GP\*GP\*GP\*CP\*C  
P\*CP\*CP\*GP\*GP\*GP\*G)-3')



- Molecule 8: DNA (5'-D(P\*CP\*CP\*CP\*CP\*GP\*GP\*GP\*GP\*CP\*CP\*CP\*CP\*CP\*CP\*G  
P\*GP\*C)-3')



## 4 Experimental information

Property	Value	Source
EM reconstruction method	SINGLE PARTICLE	Depositor
Imposed symmetry	POINT, C1	Depositor
Number of particles used	252647	Depositor
Resolution determination method	FSC 0.143 CUT-OFF	Depositor
CTF correction method	PHASE FLIPPING AND AMPLITUDE CORRECTION	Depositor
Microscope	FEI TITAN KRIOS	Depositor
Voltage (kV)	300	Depositor
Electron dose ( $e^-/\text{\AA}^2$ )	66	Depositor
Minimum defocus (nm)	700	Depositor
Maximum defocus (nm)	2000	Depositor
Magnification	Not provided	
Image detector	GATAN K3 (6k x 4k)	Depositor
Maximum map value	2.571	Depositor
Minimum map value	-0.686	Depositor
Average map value	0.000	Depositor
Map value standard deviation	0.046	Depositor
Recommended contour level	0.2	Depositor
Map size (Å)	317.184, 317.184, 317.184	wwPDB
Map dimensions	384, 384, 384	wwPDB
Map angles (°)	90.0, 90.0, 90.0	wwPDB
Pixel spacing (Å)	0.826, 0.826, 0.826	Depositor

## 5 Model quality

### 5.1 Standard geometry

Bond lengths and bond angles in the following residue types are not validated in this section: AGS, GDP, MG

The Z score for a bond length (or angle) is the number of standard deviations the observed value is removed from the expected value. A bond length (or angle) with  $|Z| > 5$  is considered an outlier worth inspection. RMSZ is the root-mean-square of all Z scores of the bond lengths (or angles).

Mol	Chain	Bond lengths		Bond angles	
		RMSZ	# Z  >5	RMSZ	# Z  >5
1	A	0.09	0/3969	0.25	0/5363
2	B	0.09	0/2531	0.23	0/3414
3	C	0.09	0/2651	0.23	0/3584
4	D	0.08	0/2759	0.24	0/3730
5	E	0.09	0/2832	0.22	0/3826
6	F	0.10	0/2051	0.26	0/2767
6	G	0.12	0/2044	0.28	0/2757
6	H	0.10	0/2031	0.27	0/2739
7	I	0.17	0/511	0.44	0/789
8	J	0.18	0/401	0.42	0/614
All	All	0.10	0/21780	0.26	0/29583

There are no bond length outliers.

There are no bond angle outliers.

There are no chirality outliers.

There are no planarity outliers.

### 5.2 Too-close contacts

In the following table, the Non-H and H(model) columns list the number of non-hydrogen atoms and hydrogen atoms in the chain respectively. The H(added) column lists the number of hydrogen atoms added and optimized by MolProbity. The Clashes column lists the number of clashes within the asymmetric unit, whereas Symm-Clashes lists symmetry-related clashes.

Mol	Chain	Non-H	H(model)	H(added)	Clashes	Symm-Clashes
1	A	3892	3944	3944	31	0
2	B	2496	2588	2588	14	0
3	C	2611	2643	2643	19	0

*Continued on next page...*

*Continued from previous page...*

Mol	Chain	Non-H	H(model)	H(added)	Clashes	Symm-Clashes
4	D	2714	2750	2750	15	0
5	E	2792	2906	2906	17	0
6	F	2021	2034	2036	18	0
6	G	2014	2033	2035	24	0
6	H	2001	2022	2024	29	0
7	I	457	249	249	4	0
8	J	360	199	199	2	0
9	A	31	14	12	1	0
9	B	31	14	12	0	0
9	C	31	14	12	0	0
9	D	31	14	12	0	0
10	A	1	0	0	0	0
10	B	1	0	0	0	0
10	C	1	0	0	0	0
10	D	1	0	0	0	0
11	E	28	12	11	0	0
All	All	21514	21436	21433	162	0

The all-atom clashscore is defined as the number of clashes found per 1000 atoms (including hydrogen atoms). The all-atom clashscore for this structure is 4.

The worst 5 of 162 close contacts within the same asymmetric unit are listed below, sorted by their clash magnitude.

Atom-1	Atom-2	Interatomic distance (Å)	Clash overlap (Å)
6:G:232:GLU:OE2	6:G:232:GLU:N	2.15	0.79
6:H:68:LEU:HD13	6:H:99:ILE:HD12	1.64	0.78
6:G:32:GLU:N	6:G:32:GLU:OE1	2.18	0.76
6:F:42:ASP:OD1	6:F:43:SER:N	2.19	0.75
6:F:55:GLU:N	6:F:55:GLU:OE1	2.20	0.75

There are no symmetry-related clashes.

## 5.3 Torsion angles [i](#)

### 5.3.1 Protein backbone [i](#)

In the following table, the Percentiles column shows the percent Ramachandran outliers of the chain as a percentile score with respect to all PDB entries followed by that with respect to all EM entries.

The Analysed column shows the number of residues for which the backbone conformation was analysed, and the total number of residues.

Mol	Chain	Analysed	Favoured	Allowed	Outliers	Percentiles	
1	A	488/918 (53%)	479 (98%)	9 (2%)	0	100	100
2	B	316/323 (98%)	310 (98%)	6 (2%)	0	100	100
3	C	328/339 (97%)	324 (99%)	4 (1%)	0	100	100
4	D	342/353 (97%)	339 (99%)	3 (1%)	0	100	100
5	E	352/354 (99%)	349 (99%)	3 (1%)	0	100	100
6	F	256/277 (92%)	253 (99%)	3 (1%)	0	100	100
6	G	255/277 (92%)	250 (98%)	5 (2%)	0	100	100
6	H	253/277 (91%)	250 (99%)	3 (1%)	0	100	100
All	All	2590/3118 (83%)	2554 (99%)	36 (1%)	0	100	100

There are no Ramachandran outliers to report.

### 5.3.2 Protein sidechains [i](#)

In the following table, the Percentiles column shows the percent sidechain outliers of the chain as a percentile score with respect to all PDB entries followed by that with respect to all EM entries.

The Analysed column shows the number of residues for which the sidechain conformation was analysed, and the total number of residues.

Mol	Chain	Analysed	Rotameric	Outliers	Percentiles	
1	A	427/791 (54%)	423 (99%)	4 (1%)	70	84
2	B	279/283 (99%)	277 (99%)	2 (1%)	76	87
3	C	286/295 (97%)	283 (99%)	3 (1%)	68	82
4	D	303/312 (97%)	302 (100%)	1 (0%)	86	93
5	E	323/324 (100%)	320 (99%)	3 (1%)	70	84
6	F	231/249 (93%)	226 (98%)	5 (2%)	45	66
6	G	231/249 (93%)	229 (99%)	2 (1%)	70	84
6	H	230/249 (92%)	227 (99%)	3 (1%)	61	78
All	All	2310/2752 (84%)	2287 (99%)	23 (1%)	65	82

5 of 23 residues with a non-rotameric sidechain are listed below:

Mol	Chain	Res	Type
6	F	138	SER
6	F	203	VAL
6	F	194	SER
6	G	22	CYS
3	C	235	CYS

Sometimes sidechains can be flipped to improve hydrogen bonding and reduce clashes. 5 of 28 such sidechains are listed below:

Mol	Chain	Res	Type
3	C	260	HIS
6	H	153	GLN
4	D	345	ASN
6	G	94	ASN
4	D	25	GLN

### 5.3.3 RNA [i](#)

There are no RNA molecules in this entry.

## 5.4 Non-standard residues in protein, DNA, RNA chains [i](#)

There are no non-standard protein/DNA/RNA residues in this entry.

## 5.5 Carbohydrates [i](#)

There are no oligosaccharides in this entry.

## 5.6 Ligand geometry [i](#)

Of 9 ligands modelled in this entry, 4 are monoatomic - leaving 5 for Mogul analysis.

In the following table, the Counts columns list the number of bonds (or angles) for which Mogul statistics could be retrieved, the number of bonds (or angles) that are observed in the model and the number of bonds (or angles) that are defined in the Chemical Component Dictionary. The Link column lists molecule types, if any, to which the group is linked. The Z score for a bond length (or angle) is the number of standard deviations the observed value is removed from the expected value. A bond length (or angle) with  $|Z| > 2$  is considered an outlier worth inspection. RMSZ is the root-mean-square of all Z scores of the bond lengths (or angles).

Mol	Type	Chain	Res	Link	Bond lengths			Bond angles		
					Counts	RMSZ	# Z  > 2	Counts	RMSZ	# Z  > 2
9	AGS	B	402	10	32,33,33	3.49	17 (53%)	45,52,52	1.98	16 (35%)
9	AGS	C	402	10	32,33,33	3.48	17 (53%)	45,52,52	1.95	13 (28%)
9	AGS	D	402	10	32,33,33	3.48	17 (53%)	45,52,52	1.95	13 (28%)
11	GDP	E	401	-	29,30,30	3.45	14 (48%)	45,47,47	1.71	9 (20%)
9	AGS	A	901	10	32,33,33	3.49	18 (56%)	45,52,52	1.95	14 (31%)

In the following table, the Chirals column lists the number of chiral outliers, the number of chiral centers analysed, the number of these observed in the model and the number defined in the Chemical Component Dictionary. Similar counts are reported in the Torsion and Rings columns. '-' means no outliers of that kind were identified.

Mol	Type	Chain	Res	Link	Chirals	Torsions	Rings
9	AGS	B	402	10	-	5/21/38/38	0/3/3/3
9	AGS	C	402	10	-	3/21/38/38	0/3/3/3
9	AGS	D	402	10	-	5/21/38/38	0/3/3/3
11	GDP	E	401	-	-	3/16/32/32	0/3/3/3
9	AGS	A	901	10	-	3/21/38/38	0/3/3/3

The worst 5 of 83 bond length outliers are listed below:

Mol	Chain	Res	Type	Atoms	Z	Observed(Å)	Ideal(Å)
9	A	901	AGS	C2'-C3'	-10.71	1.24	1.53
9	C	402	AGS	C2'-C3'	-10.69	1.24	1.53
9	D	402	AGS	C2'-C3'	-10.66	1.24	1.53
9	B	402	AGS	C2'-C3'	-10.63	1.24	1.53
11	E	401	GDP	C3'-C4'	-8.67	1.31	1.53

The worst 5 of 65 bond angle outliers are listed below:

Mol	Chain	Res	Type	Atoms	Z	Observed(°)	Ideal(°)
9	A	901	AGS	N3-C2-N1	-5.62	120.07	128.58
9	D	402	AGS	N3-C2-N1	-5.62	120.07	128.58
9	C	402	AGS	N3-C2-N1	-5.61	120.08	128.58
9	B	402	AGS	N3-C2-N1	-5.60	120.10	128.58
9	C	402	AGS	C5-C4-N3	-5.14	119.63	126.72

There are no chirality outliers.

5 of 19 torsion outliers are listed below:

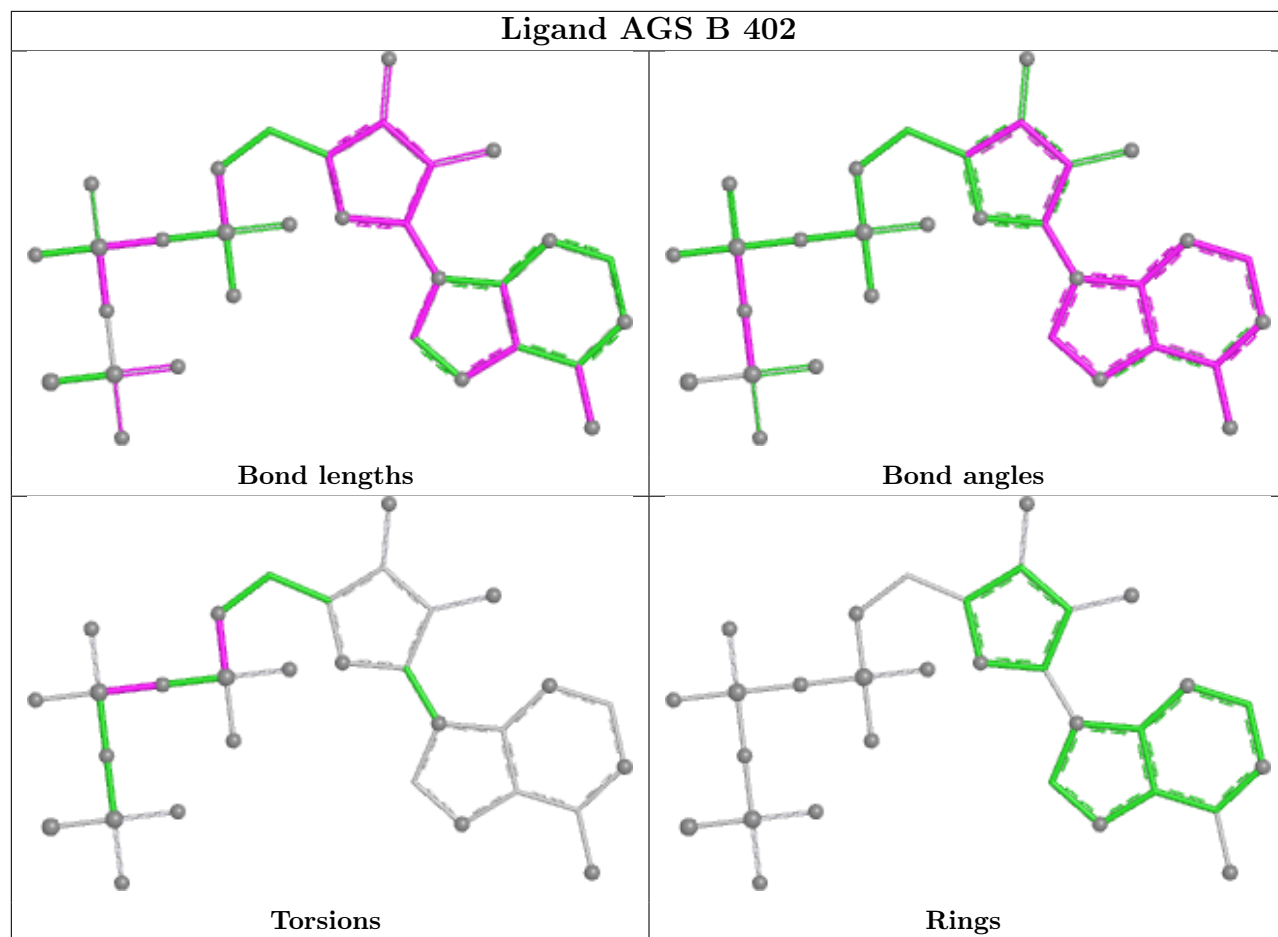
Mol	Chain	Res	Type	Atoms
9	A	901	AGS	C5'-O5'-PA-O1A
9	A	901	AGS	C5'-O5'-PA-O3A
9	B	402	AGS	C5'-O5'-PA-O2A
9	B	402	AGS	C5'-O5'-PA-O3A
9	D	402	AGS	C5'-O5'-PA-O2A

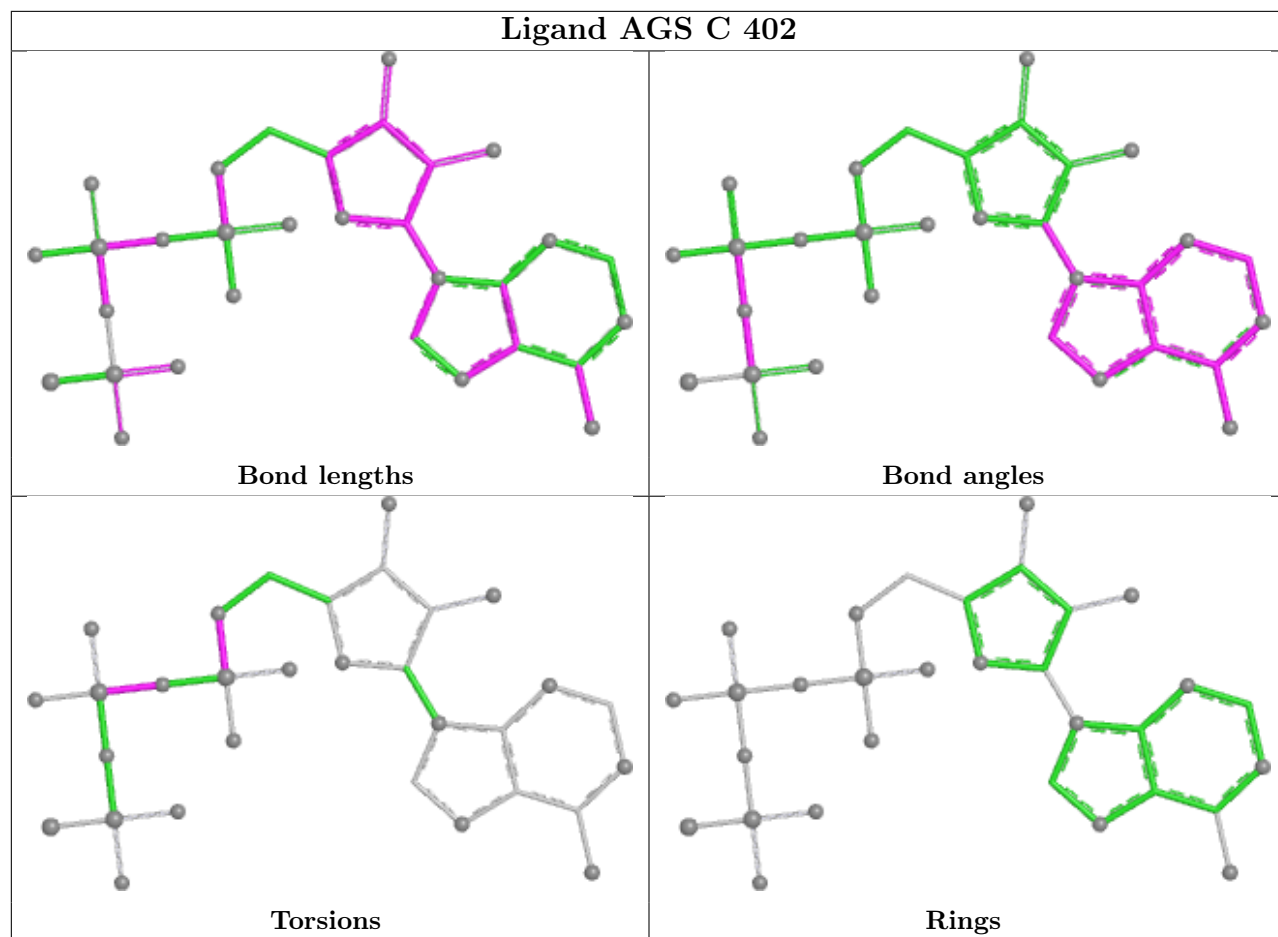
There are no ring outliers.

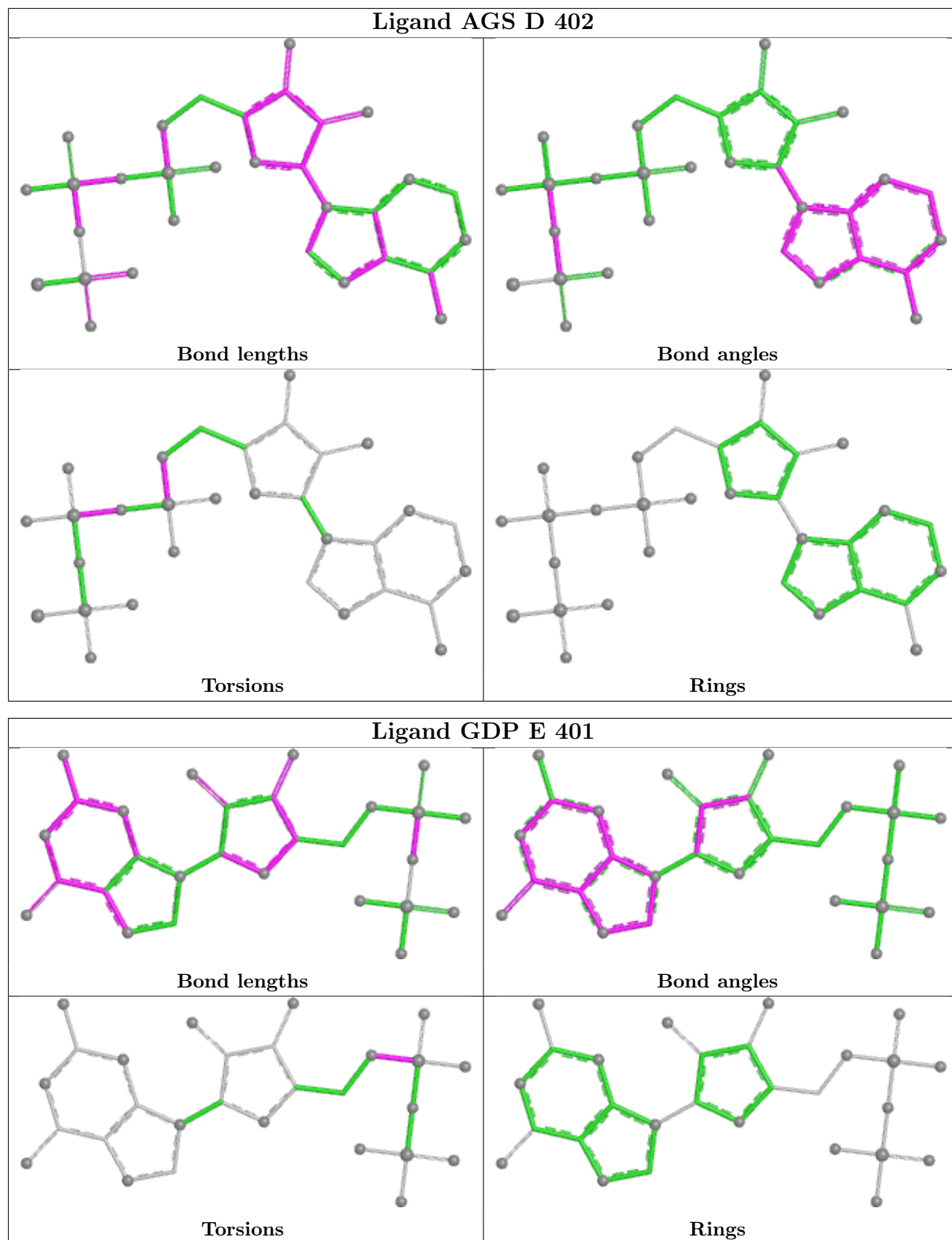
1 monomer is involved in 1 short contact:

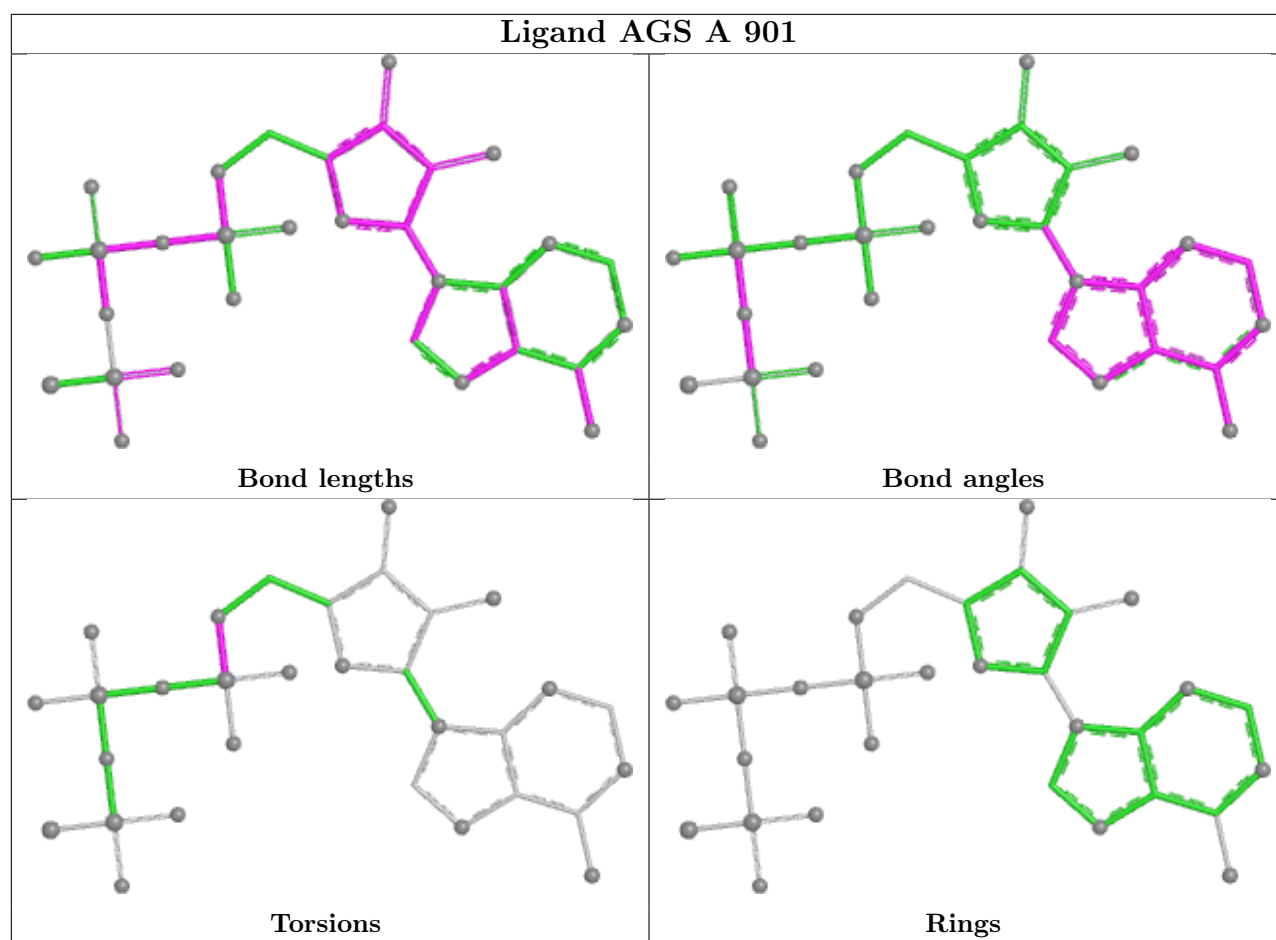
Mol	Chain	Res	Type	Clashes	Symm-Clashes
9	A	901	AGS	1	0

The following is a two-dimensional graphical depiction of Mogul quality analysis of bond lengths, bond angles, torsion angles, and ring geometry for all instances of the Ligand of Interest. In addition, ligands with molecular weight > 250 and outliers as shown on the validation Tables will also be included. For torsion angles, if less than 5% of the Mogul distribution of torsion angles is within 10 degrees of the torsion angle in question, then that torsion angle is considered an outlier. Any bond that is central to one or more torsion angles identified as an outlier by Mogul will be highlighted in the graph. For rings, the root-mean-square deviation (RMSD) between the ring in question and similar rings identified by Mogul is calculated over all ring torsion angles. If the average RMSD is greater than 60 degrees and the minimal RMSD between the ring in question and any Mogul-identified rings is also greater than 60 degrees, then that ring is considered an outlier. The outliers are highlighted in purple. The color gray indicates Mogul did not find sufficient equivalents in the CSD to analyse the geometry.









## 5.7 Other polymers [i](#)

There are no such residues in this entry.

## 5.8 Polymer linkage issues [i](#)

There are no chain breaks in this entry.

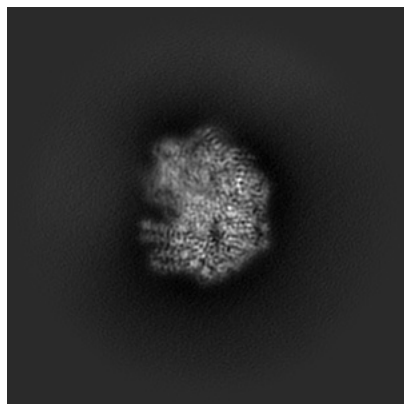
## 6 Map visualisation [i](#)

This section contains visualisations of the EMDB entry EMD-27667. These allow visual inspection of the internal detail of the map and identification of artifacts.

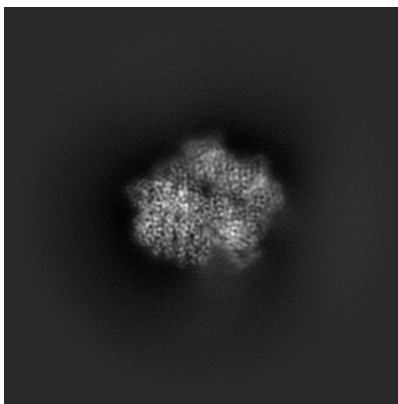
Images derived from a raw map, generated by summing the deposited half-maps, are presented below the corresponding image components of the primary map to allow further visual inspection and comparison with those of the primary map.

### 6.1 Orthogonal projections [i](#)

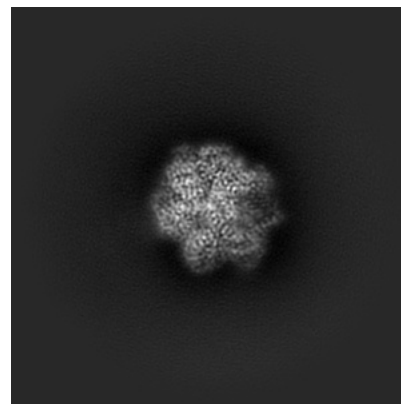
#### 6.1.1 Primary map



X

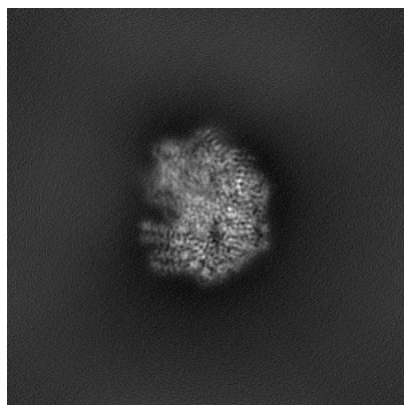


Y

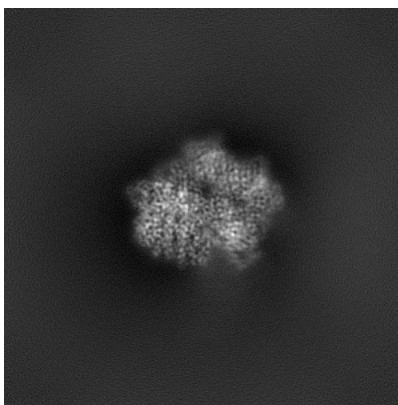


Z

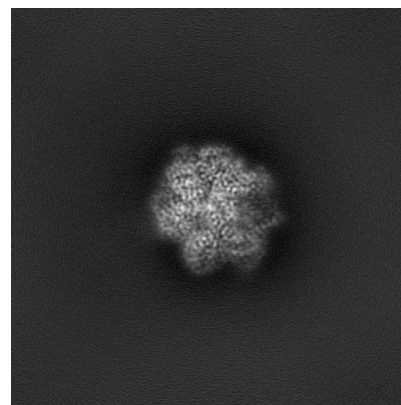
#### 6.1.2 Raw map



X



Y

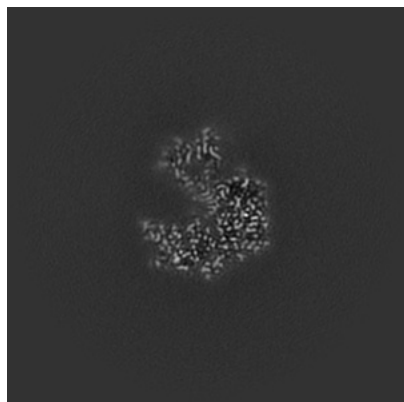


Z

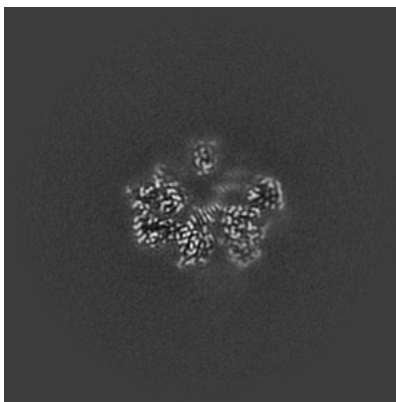
The images above show the map projected in three orthogonal directions.

## 6.2 Central slices [i](#)

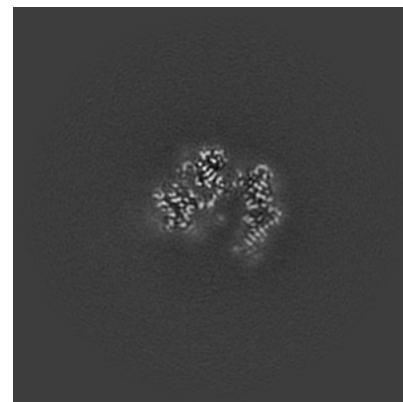
### 6.2.1 Primary map



X Index: 192

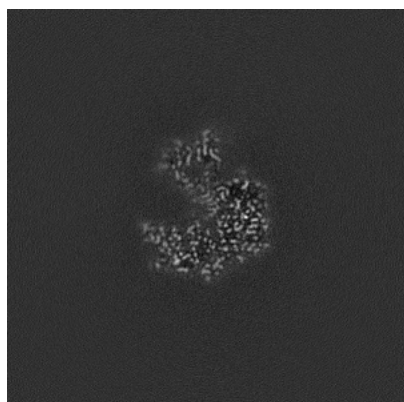


Y Index: 192

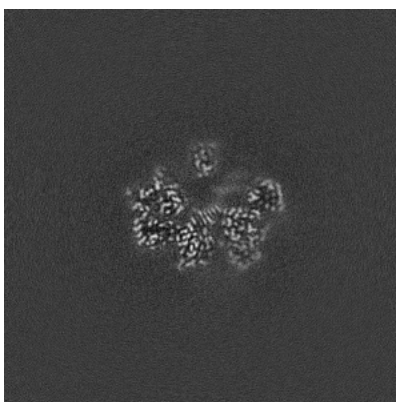


Z Index: 192

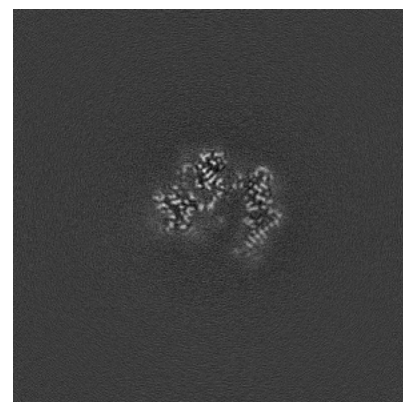
### 6.2.2 Raw map



X Index: 192



Y Index: 192

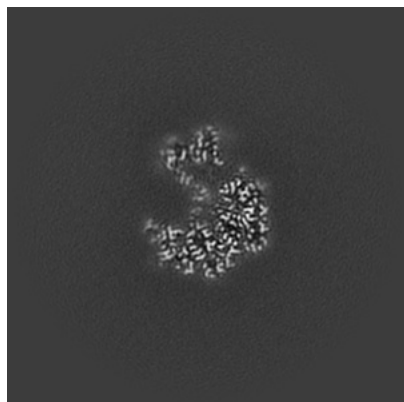


Z Index: 192

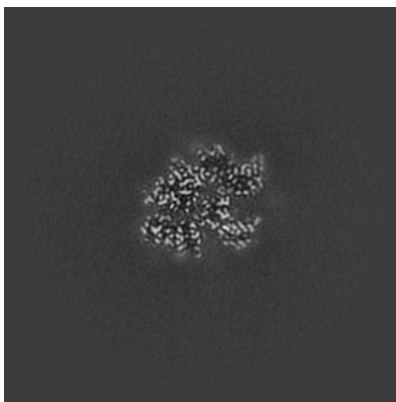
The images above show central slices of the map in three orthogonal directions.

## 6.3 Largest variance slices [i](#)

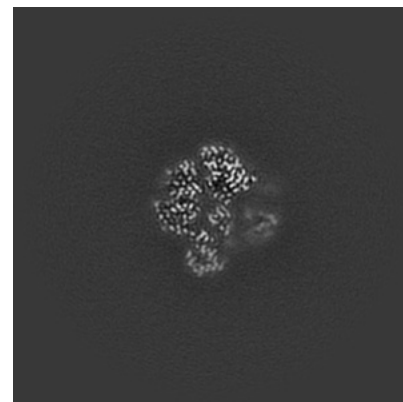
### 6.3.1 Primary map



X Index: 195

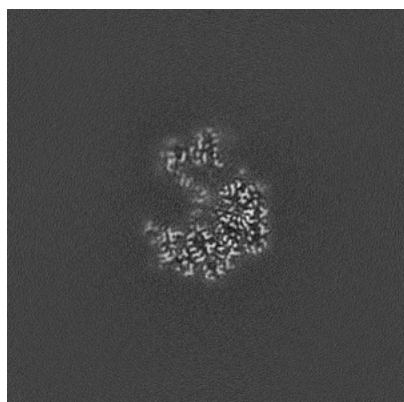


Y Index: 216

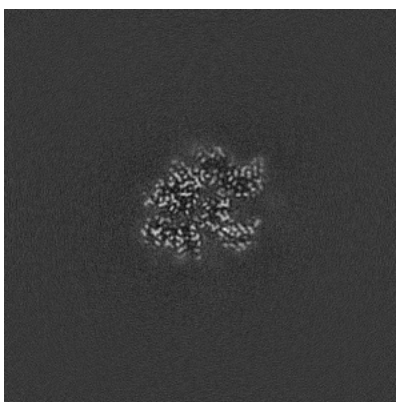


Z Index: 174

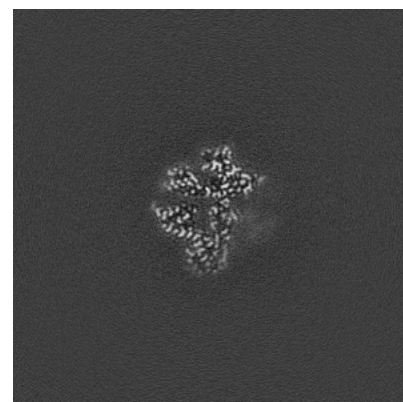
### 6.3.2 Raw map



X Index: 195



Y Index: 216

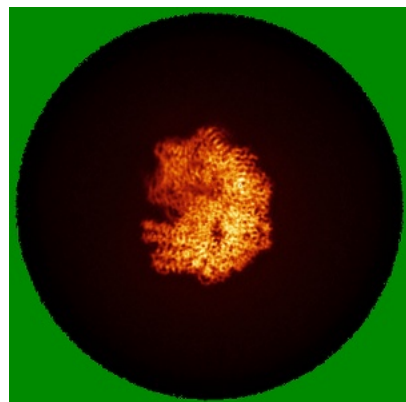


Z Index: 169

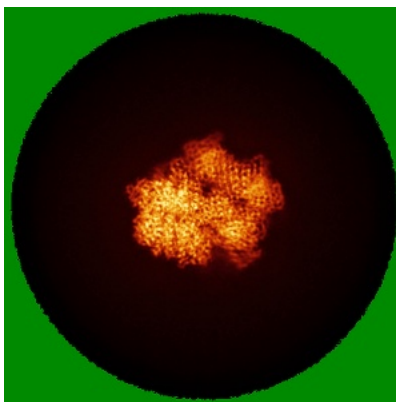
The images above show the largest variance slices of the map in three orthogonal directions.

## 6.4 Orthogonal standard-deviation projections (False-color) [i](#)

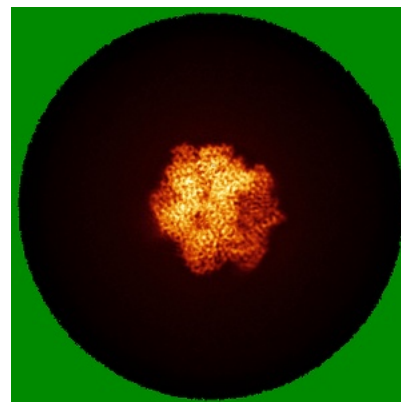
### 6.4.1 Primary map



X

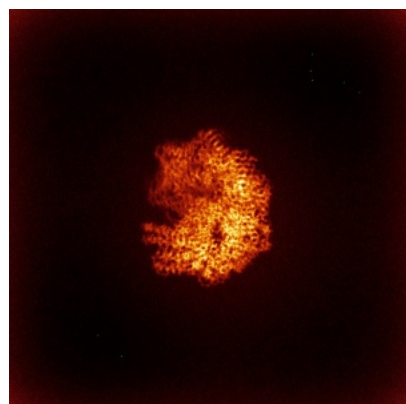


Y

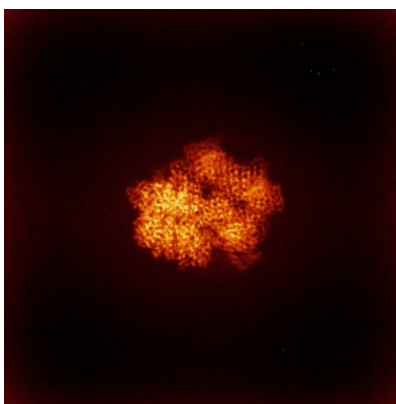


Z

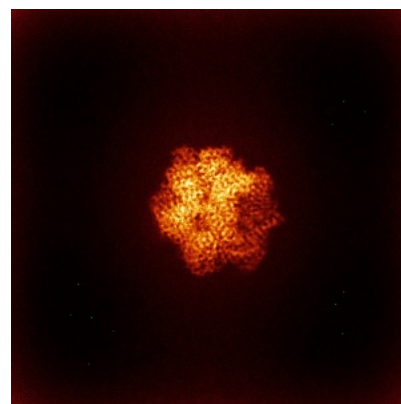
### 6.4.2 Raw map



X



Y

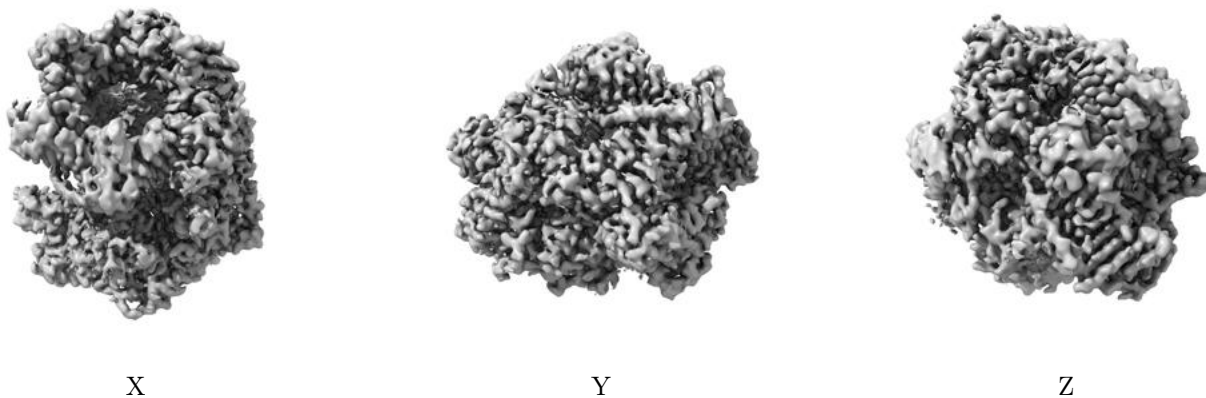


Z

The images above show the map standard deviation projections with false color in three orthogonal directions. Minimum values are shown in green, max in blue, and dark to light orange shades represent small to large values respectively.

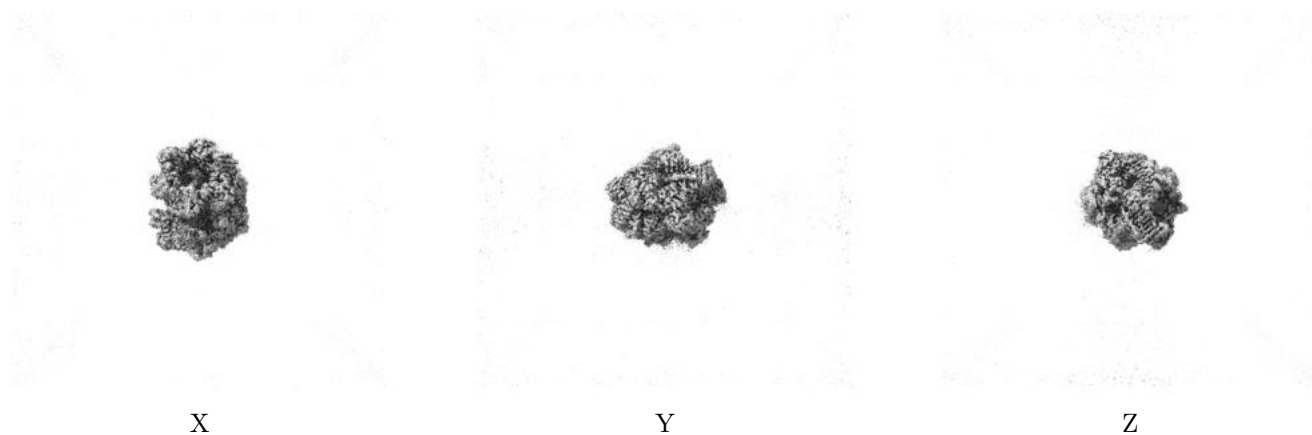
## 6.5 Orthogonal surface views [i](#)

### 6.5.1 Primary map



The images above show the 3D surface view of the map at the recommended contour level 0.2. These images, in conjunction with the slice images, may facilitate assessment of whether an appropriate contour level has been provided.

### 6.5.2 Raw map



These images show the 3D surface of the raw map. The raw map's contour level was selected so that its surface encloses the same volume as the primary map does at its recommended contour level.

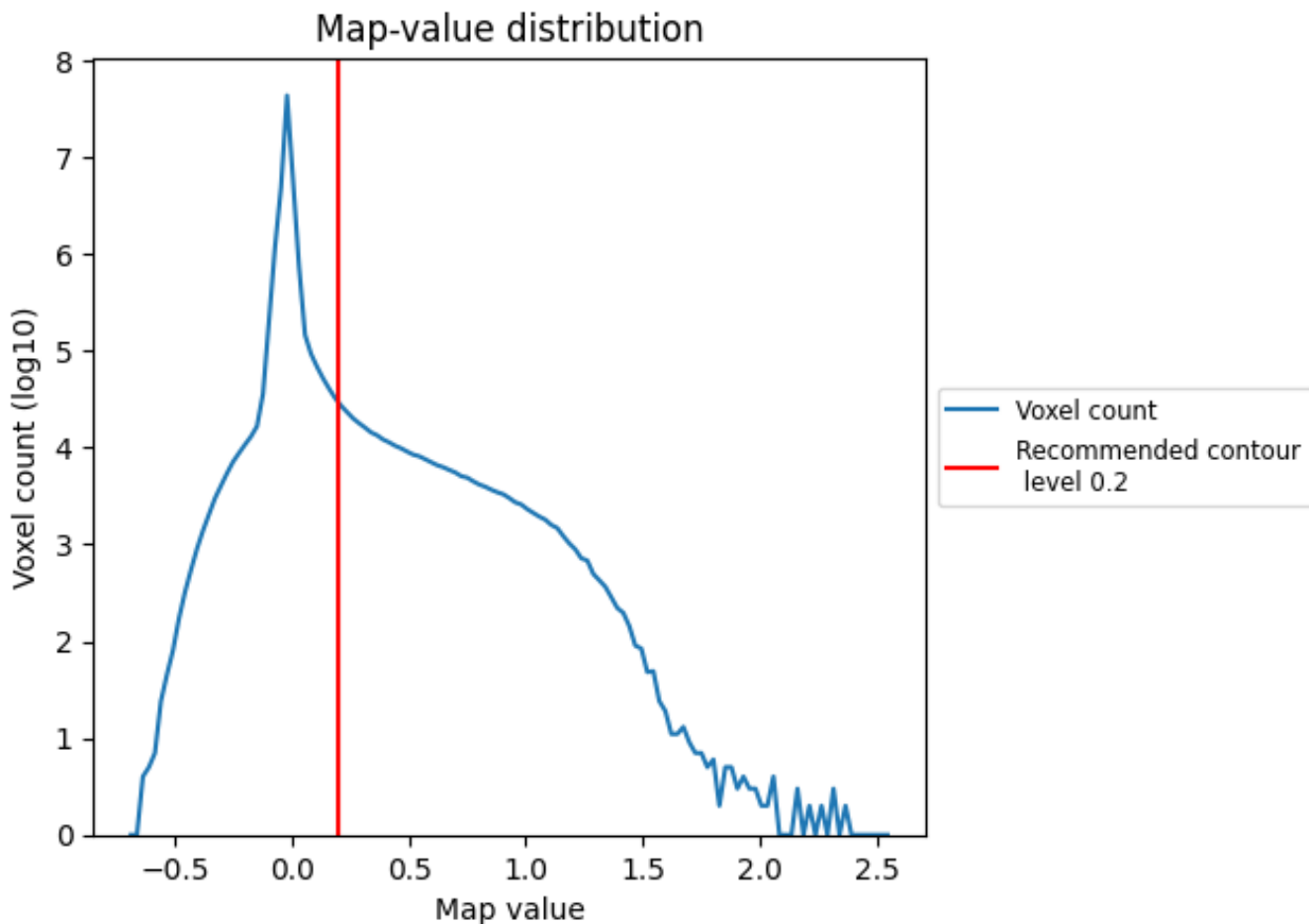
## 6.6 Mask visualisation [i](#)

This section was not generated. No masks/segmentation were deposited.

## 7 Map analysis [i](#)

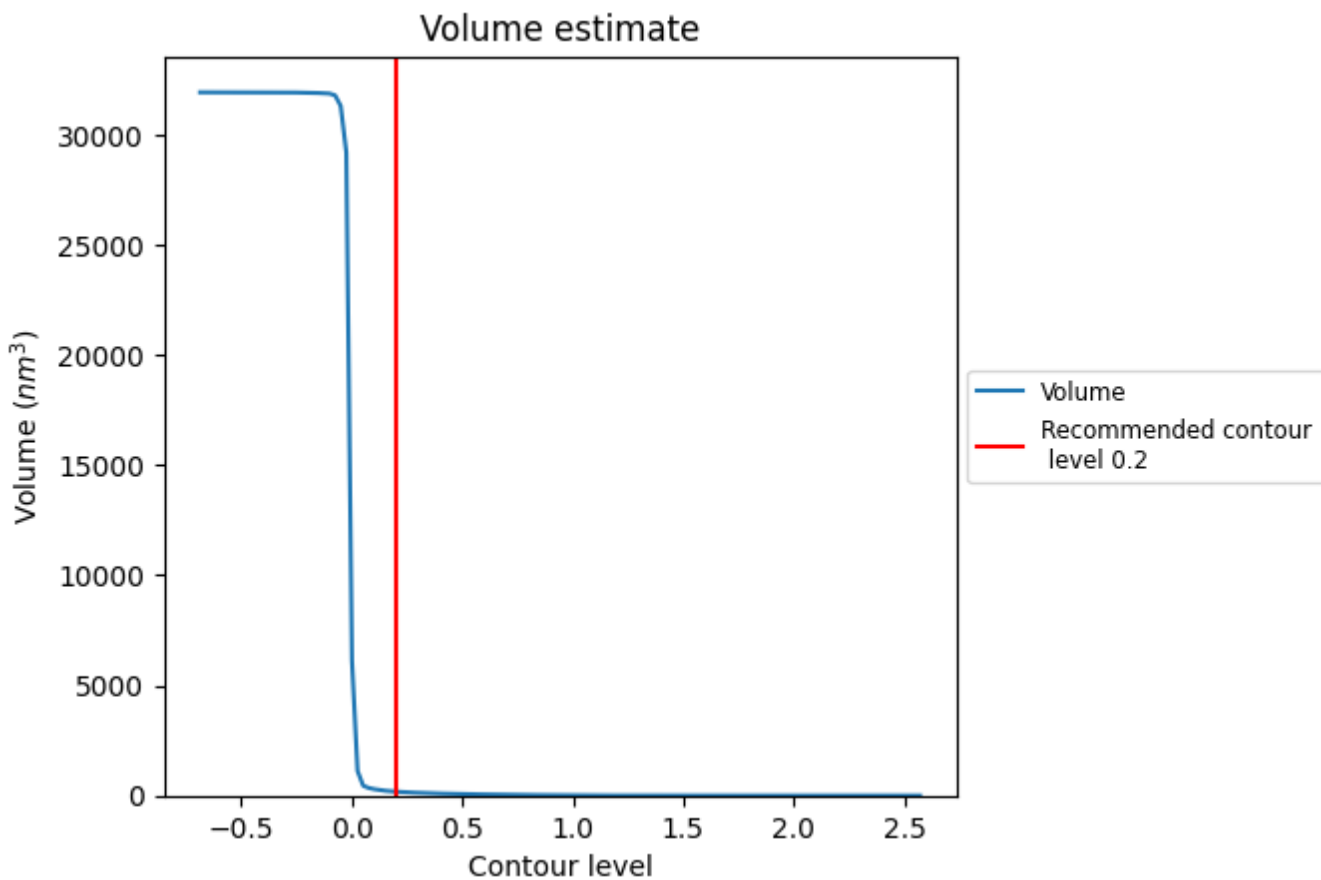
This section contains the results of statistical analysis of the map.

### 7.1 Map-value distribution [i](#)



The map-value distribution is plotted in 128 intervals along the x-axis. The y-axis is logarithmic. A spike in this graph at zero usually indicates that the volume has been masked.

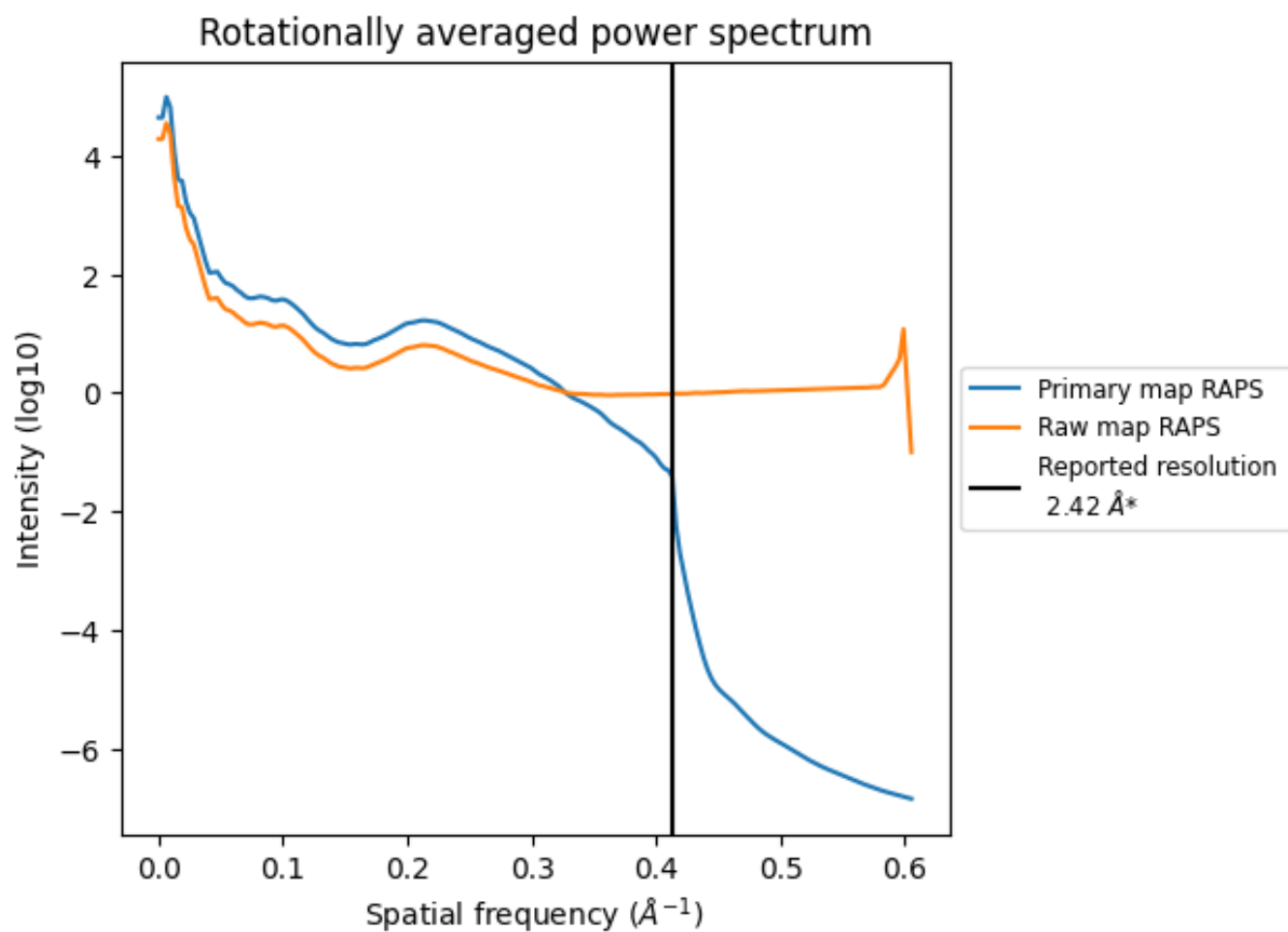
## 7.2 Volume estimate [i](#)



The volume at the recommended contour level is 177 nm<sup>3</sup>; this corresponds to an approximate mass of 160 kDa.

The volume estimate graph shows how the enclosed volume varies with the contour level. The recommended contour level is shown as a vertical line and the intersection between the line and the curve gives the volume of the enclosed surface at the given level.

### 7.3 Rotationally averaged power spectrum [i](#)

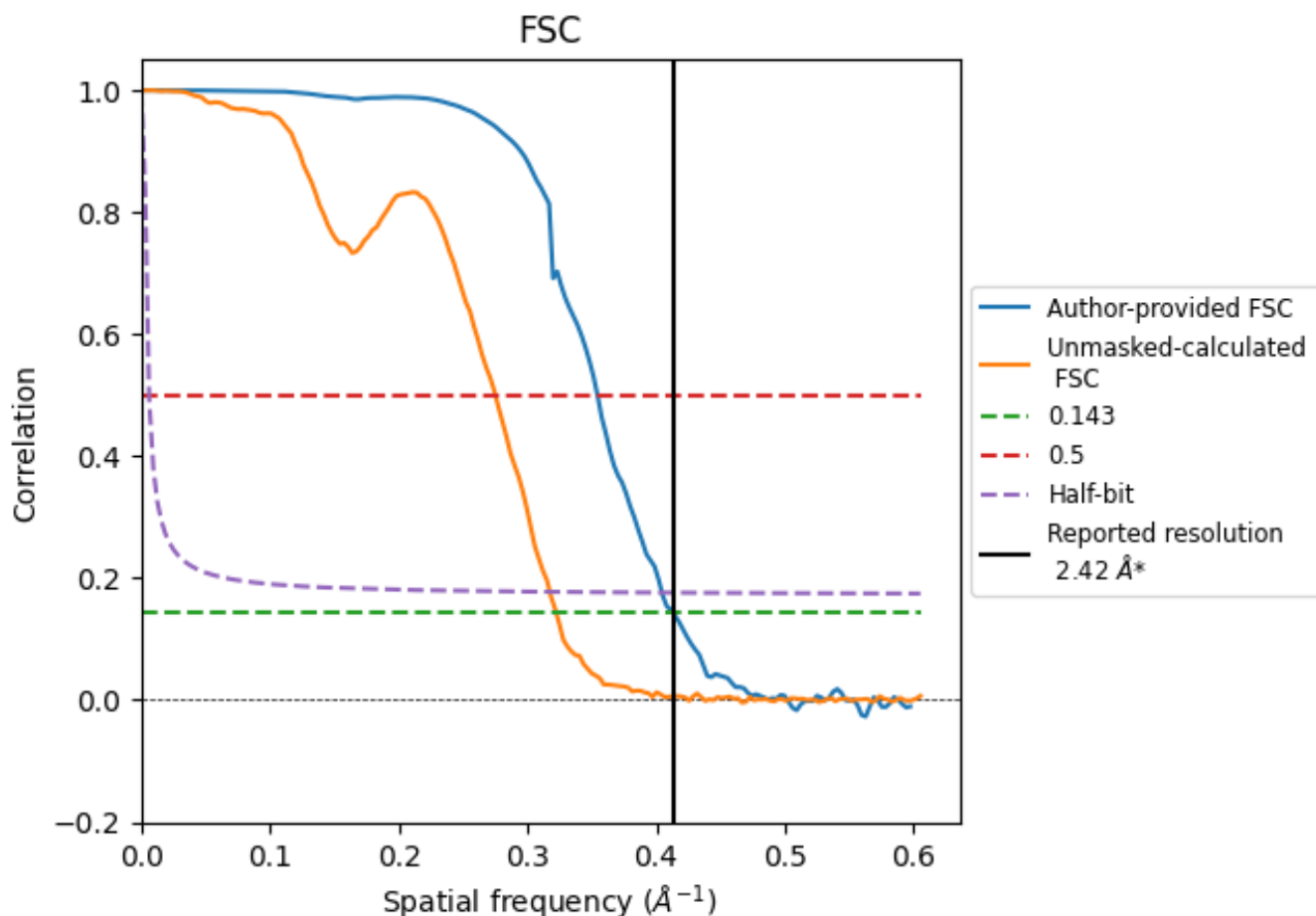


\*Reported resolution corresponds to spatial frequency of 0.413 Å<sup>-1</sup>

## 8 Fourier-Shell correlation [i](#)

Fourier-Shell Correlation (FSC) is the most commonly used method to estimate the resolution of single-particle and subtomogram-averaged maps. The shape of the curve depends on the imposed symmetry, mask and whether or not the two 3D reconstructions used were processed from a common reference. The reported resolution is shown as a black line. A curve is displayed for the half-bit criterion in addition to lines showing the 0.143 gold standard cut-off and 0.5 cut-off.

### 8.1 FSC [i](#)



\*Reported resolution corresponds to spatial frequency of 0.413 Å<sup>-1</sup>

## 8.2 Resolution estimates [i](#)

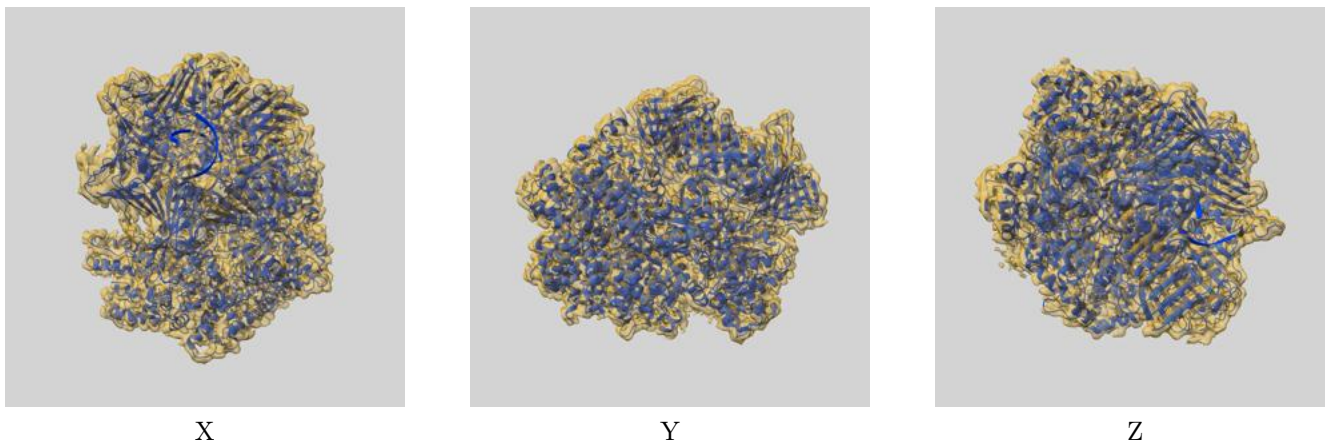
Resolution estimate (Å)	Estimation criterion (FSC cut-off)		
	0.143	0.5	Half-bit
Reported by author	2.42	-	-
Author-provided FSC curve	2.42	2.82	2.47
Unmasked-calculated*	3.10	3.63	3.15

\*Resolution estimate based on FSC curve calculated by comparison of deposited half-maps. The value from deposited half-maps intersecting FSC 0.143 CUT-OFF 3.10 differs from the reported value 2.42 by more than 10 %

## 9 Map-model fit [i](#)

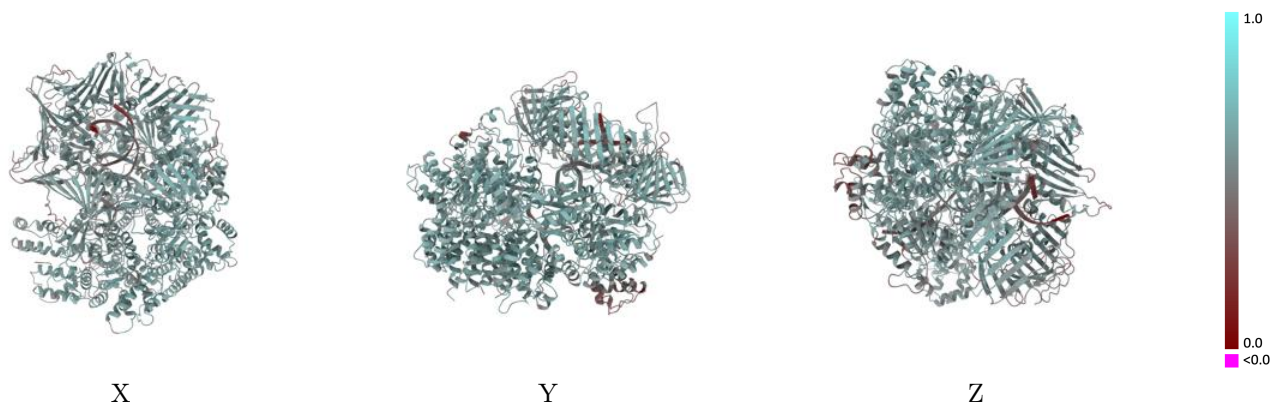
This section contains information regarding the fit between EMDB map EMD-27667 and PDB model 8DR0. Per-residue inclusion information can be found in section 3 on page 10.

### 9.1 Map-model overlay [i](#)



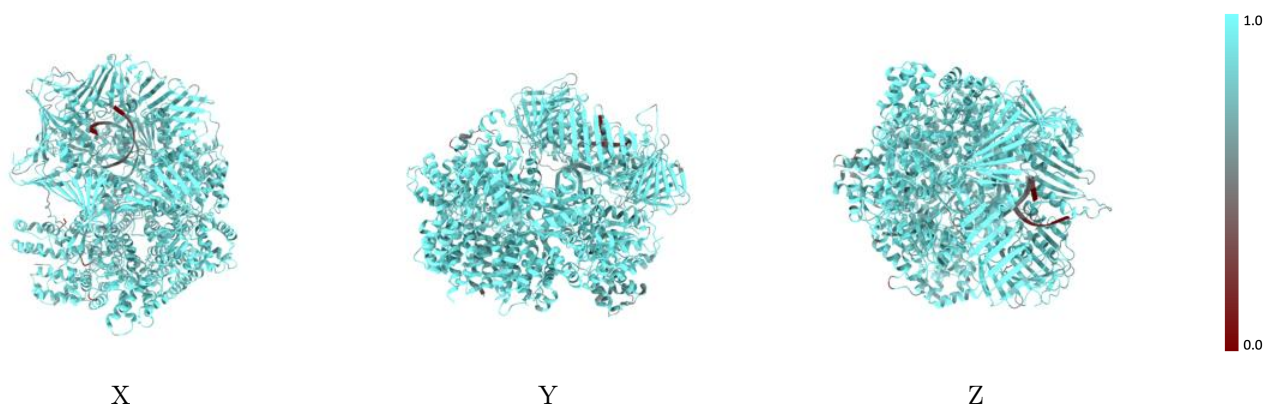
The images above show the 3D surface view of the map at the recommended contour level 0.2 at 50% transparency in yellow overlaid with a ribbon representation of the model coloured in blue. These images allow for the visual assessment of the quality of fit between the atomic model and the map.

## 9.2 Q-score mapped to coordinate model [i](#)



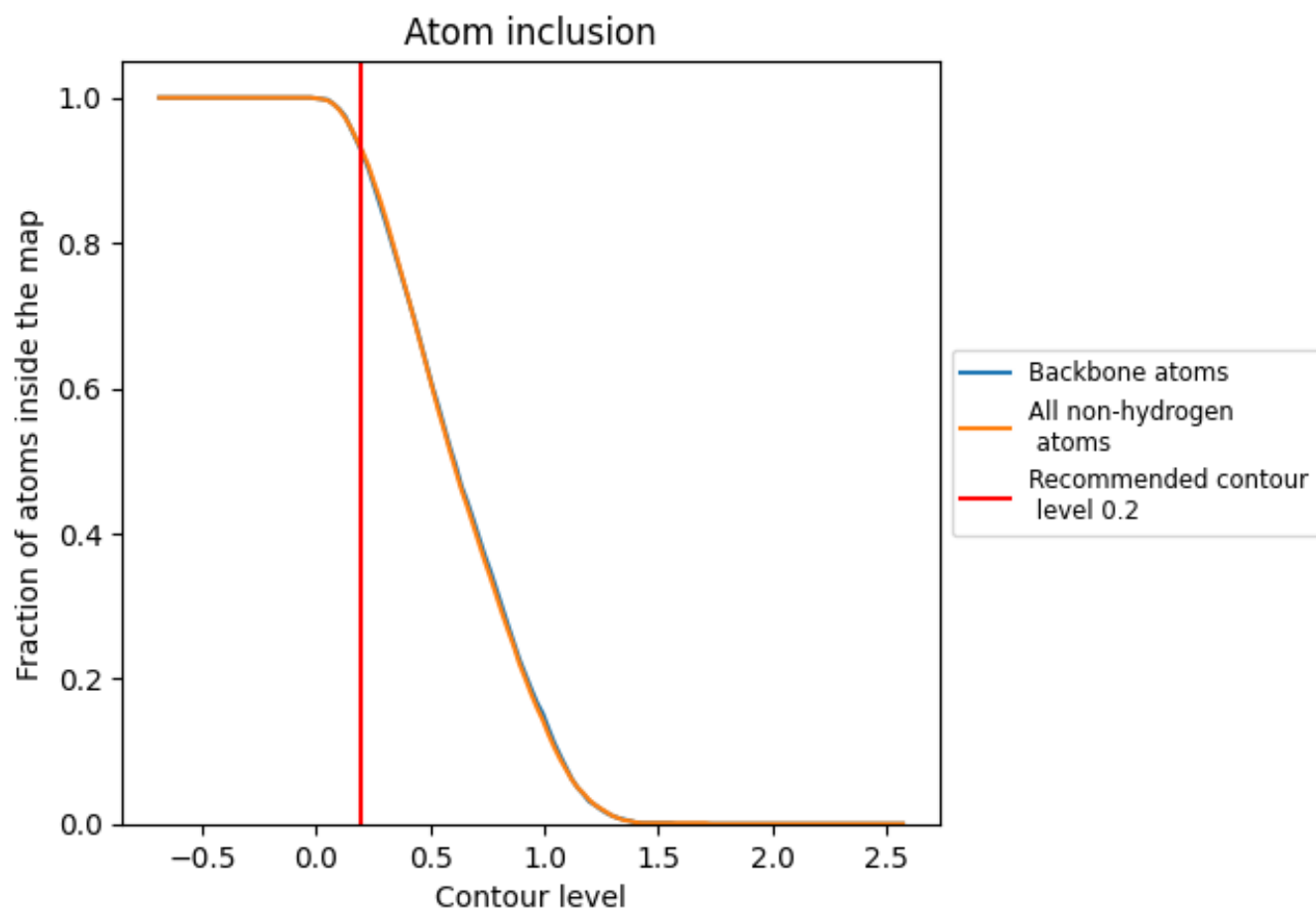
The images above show the model with each residue coloured according to its Q-score. This shows their resolvability in the map with higher Q-score values reflecting better resolvability. Please note: Q-score is calculating the resolvability of atoms, and thus high values are only expected at resolutions at which atoms can be resolved. Low Q-score values may therefore be expected for many entries.

## 9.3 Atom inclusion mapped to coordinate model [i](#)



The images above show the model with each residue coloured according to its atom inclusion. This shows to what extent they are inside the map at the recommended contour level (0.2).























## 9.4 Atom inclusion [i](#)



At the recommended contour level, 93% of all backbone atoms, 93% of all non-hydrogen atoms, are inside the map.

## 9.5 Map-model fit summary [i](#)

The table lists the average atom inclusion at the recommended contour level (0.2) and Q-score for the entire model and for each chain.

Chain	Atom inclusion	Q-score
All	 0.9280	 0.5750
A	 0.9200	 0.5490
B	 0.9650	 0.6050
C	 0.9620	 0.6110
D	 0.9600	 0.6150
E	 0.9520	 0.5990
F	 0.9230	 0.5750
G	 0.9030	 0.5530
H	 0.8710	 0.5190
I	 0.7460	 0.4660
J	 0.7170	 0.4650

