



Full wwPDB X-ray Structure Validation Report ⓘ

Mar 9, 2026 – 06:11 AM UTC

PDB ID : 7DSU / pdb_00007dsu
Title : Structure of Mod subunit of the Type III restriction-modification enzyme Mbo45V
Authors : Ahmed, I.; Chouhan, O.P.; Gopinath, A.; Morgan, R.D.; Bhagat, K.; Singh, A.; Saikrishnan, K.
Deposited on : 2021-01-02
Resolution : 3.20 Å(reported)

This is a Full wwPDB X-ray Structure Validation Report for a publicly released PDB entry.

We welcome your comments at validation@mail.wwpdb.org

A user guide is available at

<https://www.wwpdb.org/validation/2017/XrayValidationReportHelp>

with specific help available everywhere you see the ⓘ symbol.

The types of validation reports are described at

<http://www.wwpdb.org/validation/2017/FAQs#types>.

The following versions of software and data (see [references ⓘ](#)) were used in the production of this report:

MolProbity : 4-5-2 with Phenix2.0
Mogul : 2022.3.0, CSD as543be (2022)
Xtriage (Phenix) : 2.0
EDS : 3.0
Buster-report : wwPDB partial adaption of 1.1.7 (2018)
Percentile statistics : 20250101.v01 (using entries in the PDB archive January 1st 2025)
CCP4 : 9.0.010 (Gargrove)
Density-Fitness : 1.0.12
Ideal geometry (proteins) : Engh & Huber (2001)
Ideal geometry (DNA, RNA) : Parkinson et al. (1996)
Validation Pipeline (wwPDB-VP) : 2.49

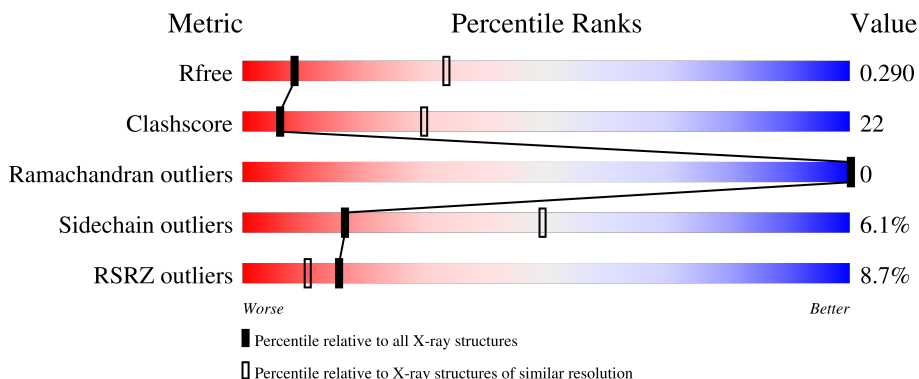
1 Overall quality at a glance

The following experimental techniques were used to determine the structure:

X-RAY DIFFRACTION

The reported resolution of this entry is 3.20 Å.

Percentile scores (ranging between 0-100) for global validation metrics of the entry are shown in the following graphic. The table shows the number of entries on which the scores are based.



Metric	Whole archive (#Entries)	Similar resolution (#Entries, resolution range(Å))
R_{free}	180053	1466 (3.20-3.20)
Clashscore	190562	1573 (3.20-3.20)
Ramachandran outliers	187476	1548 (3.20-3.20)
Sidechain outliers	187428	1547 (3.20-3.20)
RSRZ outliers	180081	1466 (3.20-3.20)

The table below summarises the geometric issues observed across the polymeric chains and their fit to the electron density. The red, orange, yellow and green segments of the lower bar indicate the fraction of residues that contain outliers for ≥ 3 , 2, 1 and 0 types of geometric quality criteria respectively. A grey segment represents the fraction of residues that are not modelled. The numeric value for each fraction is indicated below the corresponding segment, with a dot representing fractions $\leq 5\%$. The upper red bar (where present) indicates the fraction of residues that have poor fit to the electron density. The numeric value is given above the bar.

Mol	Chain	Length	Quality of chain
1	A	567	 6% 45% 26% 27%
1	B	567	 7% 45% 28% 26%

2 Entry composition [i](#)

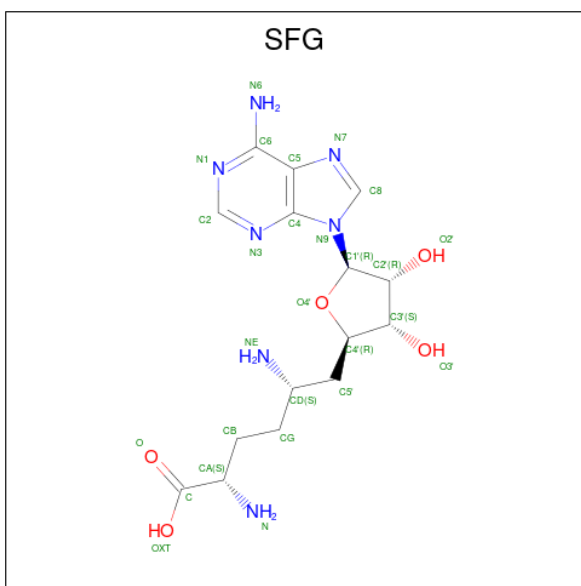
There are 4 unique types of molecules in this entry. The entry contains 6296 atoms, of which 2 are hydrogens and 0 are deuteriums.

In the tables below, the ZeroOcc column contains the number of atoms modelled with zero occupancy, the AltConf column contains the number of residues with at least one atom in alternate conformation and the Trace column contains the number of residues modelled with at most 2 atoms.

- Molecule 1 is a protein called Mbo45V.

Mol	Chain	Residues	Atoms					ZeroOcc	AltConf	Trace	
			Total	C	N	O	S				Se
1	A	412	Total 3070	C 1948	N 511	O 601	S 3	Se 7	0	0	0
1	B	420	Total 3163	C 2003	N 529	O 621	S 3	Se 7	0	0	0

- Molecule 2 is SINEFUNGIN (CCD ID: SFG) (formula: $C_{15}H_{23}N_7O_5$) (labeled as "Ligand of Interest" by depositor).



Mol	Chain	Residues	Atoms				ZeroOcc	AltConf
			Total	C	N	O		
2	A	1	Total 27	C 15	N 7	O 5	0	0
2	B	1	Total 27	C 15	N 7	O 5	0	0

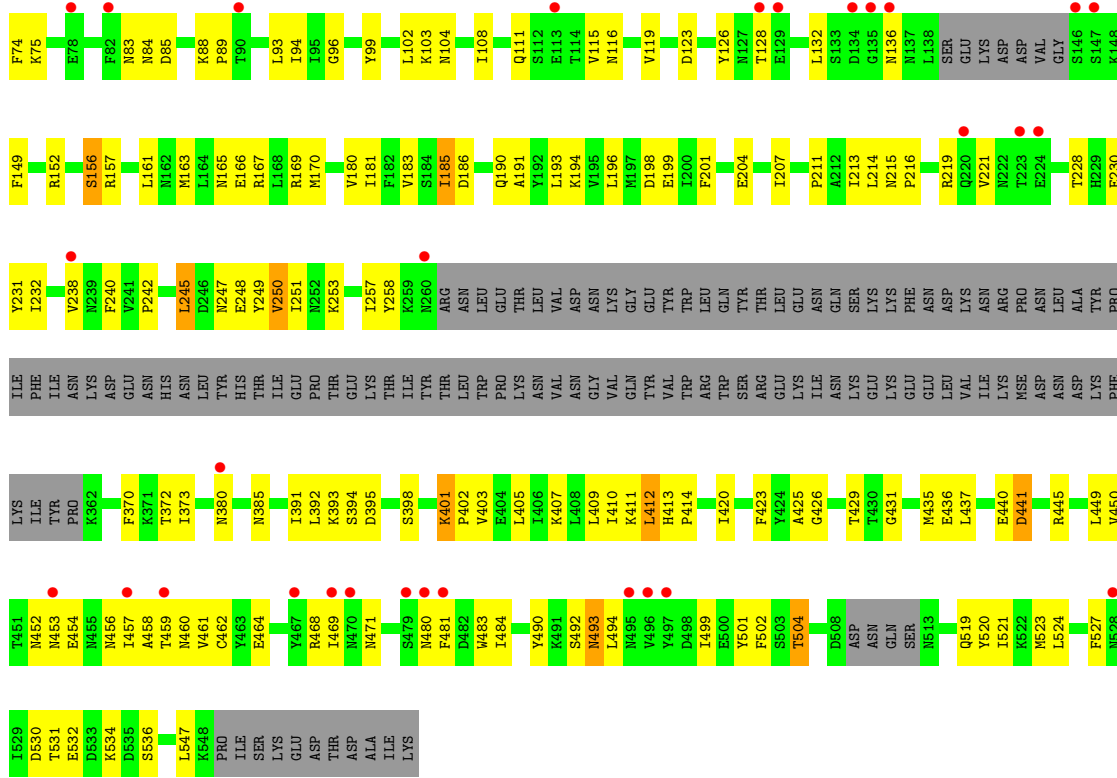
- Molecule 3 is 1,2-ETHANEDIOL (CCD ID: EDO) (formula: $C_2H_6O_2$).



Mol	Chain	Residues	Atoms				ZeroOcc	AltConf
			Total	C	H	O		
3	B	1	6	2	2	2	0	0

- Molecule 4 is water.

Mol	Chain	Residues	Atoms		ZeroOcc	AltConf
			Total	O		
4	B	3	3	3	0	0



4 Data and refinement statistics

Property	Value	Source
Space group	P 21 21 21	Depositor
Cell constants a, b, c, α , β , γ	95.30Å 100.88Å 187.32Å 90.00° 90.00° 90.00°	Depositor
Resolution (Å)	48.70 – 3.20 48.70 – 3.20	Depositor EDS
% Data completeness (in resolution range)	99.3 (48.70-3.20) 99.3 (48.70-3.20)	Depositor EDS
R_{merge}	0.13	Depositor
R_{sym}	(Not available)	Depositor
$\langle I/\sigma(I) \rangle$ ¹	1.37 (at 3.19Å)	Xtrriage
Refinement program	PHENIX (1.10.1_2155: ???)	Depositor
R, R_{free}	0.226 , 0.285 0.231 , 0.290	Depositor DCC
R_{free} test set	1426 reflections (4.67%)	wwPDB-VP
Wilson B-factor (Å ²)	113.7	Xtrriage
Anisotropy	0.456	Xtrriage
Bulk solvent k_{sol} (e/Å ³), B_{sol} (Å ²)	0.31 , 100.8	EDS
L-test for twinning ²	$\langle L \rangle = 0.50$, $\langle L^2 \rangle = 0.33$	Xtrriage
Estimated twinning fraction	No twinning to report.	Xtrriage
F_o, F_c correlation	0.92	EDS
Total number of atoms	6296	wwPDB-VP
Average B, all atoms (Å ²)	119.0	wwPDB-VP

Xtrriage's analysis on translational NCS is as follows: *The largest off-origin peak in the Patterson function is 3.63% of the height of the origin peak. No significant pseudotranslation is detected.*

¹Intensities estimated from amplitudes.

²Theoretical values of $\langle |L| \rangle$, $\langle L^2 \rangle$ for acentric reflections are 0.5, 0.333 respectively for untwinned datasets, and 0.375, 0.2 for perfectly twinned datasets.

5 Model quality [i](#)

5.1 Standard geometry [i](#)

Bond lengths and bond angles in the following residue types are not validated in this section: EDO, SFG

The Z score for a bond length (or angle) is the number of standard deviations the observed value is removed from the expected value. A bond length (or angle) with $|Z| > 5$ is considered an outlier worth inspection. RMSZ is the root-mean-square of all Z scores of the bond lengths (or angles).

Mol	Chain	Bond lengths		Bond angles	
		RMSZ	# Z >5	RMSZ	# Z >5
1	A	0.22	0/3115	0.38	0/4231
1	B	0.24	0/3208	0.41	1/4351 (0.0%)
All	All	0.23	0/6323	0.40	1/8582 (0.0%)

There are no bond length outliers.

All (1) bond angle outliers are listed below:

Mol	Chain	Res	Type	Atoms	Z	Observed(°)	Ideal(°)
1	B	156	SER	CB-CA-C	-5.75	109.92	116.54

There are no chirality outliers.

There are no planarity outliers.

5.2 Too-close contacts [i](#)

In the following table, the Non-H and H(model) columns list the number of non-hydrogen atoms and hydrogen atoms in the chain respectively. The H(added) column lists the number of hydrogen atoms added and optimized by MolProbity. The Clashes column lists the number of clashes within the asymmetric unit, whereas Symm-Clashes lists symmetry-related clashes.

Mol	Chain	Non-H	H(model)	H(added)	Clashes	Symm-Clashes
1	A	3070	0	2806	123	0
1	B	3163	0	2902	153	0
2	A	27	0	21	3	0
2	B	27	0	21	6	0
3	B	4	2	6	3	0
4	B	3	0	0	0	0
All	All	6294	2	5756	270	0

The all-atom clashscore is defined as the number of clashes found per 1000 atoms (including hydrogen atoms). The all-atom clashscore for this structure is 22.

All (270) close contacts within the same asymmetric unit are listed below, sorted by their clash magnitude.

Atom-1	Atom-2	Interatomic distance (Å)	Clash overlap (Å)
1:B:521:ILE:HG23	1:B:531:THR:HG21	1.24	1.12
1:B:185:ILE:HD11	1:B:193:LEU:HD22	1.47	0.97
1:B:88:LYS:HG3	1:B:89:PRO:HD2	1.51	0.93
1:B:83:ASN:HA	1:B:493:ASN:HB3	1.49	0.92
1:A:103:LYS:HG2	1:A:170:MSE:HE1	1.53	0.88
1:B:435:MSE:HE1	1:B:492:SER:HB2	1.59	0.84
1:B:103:LYS:HG3	1:B:170:MSE:HE1	1.57	0.83
1:A:81:SER:HB3	1:A:496:VAL:H	1.45	0.80
1:A:60:PHE:CD1	1:A:155:PHE:HA	2.18	0.78
1:A:99:TYR:CB	1:A:550:ILE:HD11	2.13	0.77
1:A:435:MSE:HE1	1:A:492:SER:HB3	1.67	0.77
1:B:55:LYS:HE3	1:B:58:PHE:O	1.84	0.76
1:A:60:PHE:HD1	1:A:155:PHE:HA	1.51	0.75
1:B:96:GLY:HA3	1:B:499:ILE:HD12	1.66	0.75
1:B:119:VAL:HB	1:B:420:ILE:HD12	1.70	0.73
1:A:99:TYR:CG	1:A:550:ILE:HD11	2.24	0.73
1:B:85:ASP:O	1:B:493:ASN:ND2	2.22	0.72
1:B:185:ILE:CD1	1:B:193:LEU:HD22	2.19	0.72
1:B:521:ILE:CG2	1:B:531:THR:HG21	2.12	0.72
1:B:385:ASN:ND2	1:B:398:SER:O	2.21	0.71
1:B:435:MSE:HE1	1:B:492:SER:CB	2.20	0.71
1:A:438:ASN:HD21	1:A:445:ARG:H	1.39	0.71
1:A:232:ILE:HD11	1:A:405:LEU:HD11	1.74	0.69
1:B:161:LEU:HD22	1:B:196:LEU:HD22	1.74	0.69
1:A:435:MSE:HE1	1:A:492:SER:CB	2.23	0.69
1:B:128:THR:HG21	1:B:156:SER:HA	1.73	0.69
1:B:166:GLU:O	1:B:170:MSE:HG3	1.93	0.69
1:B:48:GLN:HE21	1:B:62:ILE:HD13	1.57	0.68
1:A:415:ASN:ND2	1:A:417:ASN:O	2.29	0.66
1:B:165:ASN:O	1:B:169:ARG:HG2	1.95	0.66
1:B:469:ILE:HG23	1:B:490:TYR:CD2	2.31	0.66
1:A:183:VAL:HG11	1:A:193:LEU:HD21	1.76	0.66
1:B:75:LYS:HD3	1:B:519:GLN:NE2	2.12	0.65
1:B:99:TYR:CD2	1:B:547:LEU:HB2	2.33	0.64
1:A:56:LEU:HD13	1:B:60:PHE:HB3	1.80	0.64
1:A:397:PHE:HB2	1:A:461:VAL:HG21	1.79	0.64
1:A:218:GLY:HA3	1:A:226:ALA:HB1	1.79	0.64

Continued on next page...

Continued from previous page...

Atom-1	Atom-2	Interatomic distance (Å)	Clash overlap (Å)
1:A:207:ILE:HB	1:A:234:ILE:HG22	1.77	0.64
1:B:69:SER:C	1:B:504:THR:HB	2.22	0.64
1:B:464:GLU:O	1:B:468:ARG:HG3	1.97	0.64
1:B:469:ILE:HG23	1:B:490:TYR:HD2	1.63	0.64
1:A:254:LEU:HD13	1:A:258:TYR:HE1	1.64	0.63
1:B:249:TYR:CE2	1:B:253:LYS:HG3	2.34	0.63
1:A:530:ASP:O	1:A:531:THR:OG1	2.17	0.63
1:A:191:ALA:O	1:A:195:VAL:HG12	1.99	0.63
1:A:81:SER:CB	1:A:495:ASN:HA	2.30	0.62
1:A:213:ILE:HB	1:A:375:LYS:HG3	1.81	0.61
1:A:244:GLU:HB3	1:A:367:THR:HB	1.81	0.61
1:B:250:VAL:HG22	1:B:258:TYR:CD2	2.36	0.61
1:A:438:ASN:ND2	1:A:445:ARG:H	1.99	0.60
1:B:185:ILE:HG22	1:B:186:ASP:N	2.16	0.60
1:B:460:ASN:O	1:B:464:GLU:HB2	2.01	0.60
1:B:531:THR:HG22	1:B:531:THR:O	2.02	0.60
1:B:73:LEU:HD22	1:B:523:MSE:HE1	1.83	0.60
2:B:601:SFG:H2'	3:B:602:EDO:H21	1.84	0.60
1:A:32:ILE:CB	1:A:50:MSE:HE1	2.30	0.60
1:B:45:ASN:HD21	1:B:64:PRO:HB2	1.67	0.60
1:B:75:LYS:HD3	1:B:519:GLN:HE21	1.66	0.60
1:B:426:GLY:HA2	2:B:601:SFG:O3'	2.02	0.59
1:A:81:SER:HB3	1:A:495:ASN:HA	1.83	0.59
1:A:376:GLY:HA3	1:A:379:PHE:HD1	1.67	0.59
1:A:205:ASN:HB3	1:A:236:GLY:O	2.03	0.58
1:B:425:ALA:HB1	1:B:449:LEU:HG	1.86	0.58
1:A:74:PHE:CZ	1:A:94:ILE:HD13	2.38	0.57
1:A:257:ILE:HG22	1:A:371:LYS:HD2	1.86	0.57
1:B:393:LYS:O	1:B:393:LYS:HG2	2.05	0.57
1:B:481:PHE:CE2	1:B:484:ILE:HB	2.39	0.57
1:A:77:ASP:CG	1:A:80:LEU:HD13	2.29	0.57
1:B:457:ILE:HA	1:B:461:VAL:HG23	1.86	0.57
1:B:411:LYS:HE2	1:B:437:LEU:HD11	1.86	0.57
1:B:437:LEU:O	1:B:441:ASP:HB2	2.05	0.57
1:B:180:VAL:CG1	1:B:240:PHE:CZ	2.88	0.56
1:B:194:LYS:HE2	1:B:198:ASP:OD1	2.05	0.56
1:B:457:ILE:HD12	1:B:458:ALA:N	2.20	0.56
1:A:91:ASN:ND2	1:A:446:CYS:HA	2.20	0.56
1:A:451:THR:HG23	1:A:458:ALA:CB	2.35	0.56
1:A:155:PHE:CD2	1:B:57:GLY:HA2	2.40	0.56
1:A:164:LEU:O	1:A:168:LEU:HB2	2.05	0.56

Continued on next page...

Continued from previous page...

Atom-1	Atom-2	Interatomic distance (Å)	Clash overlap (Å)
1:A:451:THR:HG23	1:A:458:ALA:HB2	1.88	0.56
1:B:66:VAL:HG13	1:B:66:VAL:O	2.05	0.56
1:A:94:ILE:HB	1:A:450:VAL:HG22	1.89	0.55
1:A:180:VAL:CG1	1:A:240:PHE:CZ	2.89	0.55
1:B:48:GLN:NE2	1:B:62:ILE:HD13	2.21	0.55
1:B:119:VAL:HG11	1:B:410:ILE:HG22	1.89	0.55
1:B:380:ASN:O	1:B:402:PRO:HG3	2.05	0.55
1:A:81:SER:HB3	1:A:496:VAL:N	2.20	0.55
1:B:521:ILE:HG23	1:B:531:THR:CG2	2.17	0.55
1:B:392:LEU:HD22	1:B:461:VAL:HG13	1.89	0.55
1:B:74:PHE:H	1:B:523:MSE:HE2	1.70	0.55
1:A:165:ASN:O	1:A:169:ARG:HG3	2.07	0.54
1:A:525:GLN:NE2	1:A:531:THR:HG21	2.22	0.54
1:A:388:LEU:HD13	1:A:465:ARG:HD2	1.88	0.54
1:B:437:LEU:O	1:B:441:ASP:N	2.23	0.54
1:B:55:LYS:HE2	1:B:199:GLU:OE2	2.08	0.54
1:B:115:VAL:O	1:B:116:ASN:HB2	2.07	0.54
1:A:514:MSE:O	1:A:518:GLU:HG3	2.08	0.53
1:B:51:ILE:O	1:B:55:LYS:HB2	2.07	0.53
1:B:93:LEU:CB	1:B:494:LEU:HD11	2.38	0.53
1:B:219:ARG:O	1:B:221:VAL:HG23	2.09	0.53
1:B:136:ASN:HD22	2:B:601:SFG:HN61	1.57	0.53
1:B:180:VAL:HG11	1:B:240:PHE:CZ	2.44	0.53
1:A:97:GLU:OE1	2:A:601:SFG:N6	2.42	0.53
1:A:155:PHE:CE1	1:A:161:LEU:HD23	2.44	0.52
1:B:247:ASN:O	1:B:250:VAL:HG12	2.08	0.52
1:A:64:PRO:HG3	1:A:157:ARG:HG2	1.90	0.52
1:A:107:VAL:HG21	1:A:547:LEU:HD21	1.90	0.52
1:B:69:SER:O	1:B:504:THR:HB	2.09	0.52
1:A:22:ASN:O	1:A:25:GLN:N	2.43	0.52
1:A:107:VAL:CG2	1:A:547:LEU:HD21	2.40	0.52
1:A:465:ARG:O	1:A:469:ILE:HG12	2.10	0.51
1:B:74:PHE:CZ	1:B:94:ILE:HD13	2.45	0.51
1:A:180:VAL:HG13	1:A:240:PHE:CE1	2.43	0.51
1:B:453:ASN:HA	1:B:458:ALA:HB3	1.91	0.51
1:B:186:ASP:O	1:B:190:GLN:HB2	2.11	0.51
1:A:394:SER:HB3	1:A:396:GLU:HG2	1.91	0.51
1:A:116:ASN:ND2	1:A:173:GLN:O	2.42	0.51
1:B:456:ASN:HA	1:B:459:THR:HG22	1.92	0.51
1:A:22:ASN:HB3	1:A:25:GLN:HG3	1.93	0.51
1:B:204:GLU:CD	1:B:204:GLU:H	2.18	0.51

Continued on next page...

Continued from previous page...

Atom-1	Atom-2	Interatomic distance (Å)	Clash overlap (Å)
1:A:461:VAL:HG12	1:A:462:CYS:N	2.26	0.51
1:A:99:TYR:HB3	1:A:550:ILE:HD11	1.93	0.51
1:B:69:SER:CA	1:B:504:THR:HB	2.41	0.51
1:B:436:GLU:HG3	1:B:490:TYR:OH	2.11	0.50
1:B:240:PHE:CE2	1:B:242:PRO:HG3	2.46	0.50
1:A:417:ASN:HA	1:A:444:ASN:O	2.11	0.50
1:B:88:LYS:CG	1:B:89:PRO:HD2	2.33	0.50
1:B:453:ASN:CA	1:B:458:ALA:HB3	2.42	0.50
1:A:180:VAL:HG11	1:A:240:PHE:CZ	2.46	0.50
1:B:94:ILE:HB	1:B:450:VAL:HG22	1.93	0.50
1:B:190:GLN:HG3	1:B:231:TYR:CD1	2.47	0.50
1:A:234:ILE:HD12	1:A:234:ILE:N	2.27	0.49
1:B:413:HIS:ND1	1:B:414:PRO:HD2	2.26	0.49
1:A:411:LYS:O	1:A:411:LYS:HG2	2.12	0.49
1:A:534:LYS:HA	1:A:539:ASP:HB2	1.93	0.49
1:B:181:ILE:HD13	1:B:201:PHE:CZ	2.47	0.49
1:A:49:LEU:HD22	1:B:50:MSE:HE3	1.94	0.49
1:B:407:LYS:HD3	1:B:436:GLU:HB3	1.94	0.49
2:B:601:SFG:C2'	3:B:602:EDO:H21	2.42	0.49
1:A:232:ILE:CD1	1:A:405:LEU:HD11	2.42	0.49
1:B:108:ILE:HD13	1:B:527:PHE:CE2	2.48	0.49
1:B:410:ILE:HG13	1:B:437:LEU:CD2	2.43	0.49
1:B:423:PHE:HA	1:B:450:VAL:HB	1.95	0.49
1:A:225:ILE:HD11	1:B:370:PHE:HD2	1.78	0.48
1:A:420:ILE:HD12	1:A:420:ILE:N	2.27	0.48
1:B:213:ILE:N	1:B:213:ILE:HD12	2.28	0.48
1:B:93:LEU:HB2	1:B:494:LEU:HD11	1.96	0.48
1:B:407:LYS:NZ	1:B:440:GLU:OE2	2.47	0.48
1:A:419:ARG:C	1:A:420:ILE:HD12	2.39	0.48
1:A:416:ASN:O	1:A:445:ARG:HG3	2.14	0.48
1:B:69:SER:HB2	1:B:504:THR:HB	1.94	0.48
1:A:123:ASP:OD2	2:A:601:SFG:HG1	2.14	0.48
1:B:123:ASP:HB3	2:B:601:SFG:HN2	1.79	0.48
1:A:431:GLY:O	1:A:435:MSE:HG3	2.14	0.48
1:A:460:ASN:O	1:A:464:GLU:HB2	2.13	0.48
2:B:601:SFG:H2'	3:B:602:EDO:C2	2.43	0.48
1:A:191:ALA:CB	1:B:194:LYS:HG2	2.45	0.47
1:B:431:GLY:O	1:B:435:MSE:HG3	2.14	0.47
1:A:118:ASP:OD2	1:A:176:LYS:HD3	2.14	0.47
1:B:126:TYR:HB3	1:B:186:ASP:HB2	1.97	0.47
1:A:468:ARG:HB3	1:A:481:PHE:CZ	2.50	0.47

Continued on next page...

Continued from previous page...

Atom-1	Atom-2	Interatomic distance (Å)	Clash overlap (Å)
1:B:123:ASP:OD1	1:B:401:LYS:HD3	2.15	0.47
1:A:410:ILE:HG13	1:A:437:LEU:CD2	2.45	0.47
1:A:423:PHE:HA	1:A:450:VAL:HB	1.95	0.47
1:A:383:THR:O	1:A:387:VAL:HG23	2.14	0.46
1:B:71:ILE:O	1:B:501:TYR:HA	2.15	0.46
1:A:81:SER:HB2	1:A:495:ASN:HA	1.97	0.46
1:A:426:GLY:HA2	2:A:601:SFG:O3'	2.15	0.46
1:B:22:ASN:HB3	1:B:54:VAL:HG13	1.97	0.46
1:A:22:ASN:H	1:A:25:GLN:HB2	1.80	0.46
1:A:71:ILE:HD12	1:A:544:LEU:HD22	1.97	0.46
1:A:194:LYS:HG2	1:B:191:ALA:HB2	1.97	0.46
1:A:91:ASN:HD22	1:A:447:TYR:H	1.64	0.46
1:A:422:ASP:OD2	1:A:430:THR:OG1	2.26	0.46
1:B:469:ILE:CG2	1:B:490:TYR:CD2	2.98	0.46
1:B:54:VAL:O	1:B:54:VAL:HG12	2.15	0.46
1:B:257:ILE:HG22	1:B:258:TYR:CD2	2.51	0.46
1:A:534:LYS:HA	1:A:539:ASP:CB	2.46	0.45
1:B:464:GLU:OE1	1:B:468:ARG:NE	2.39	0.45
1:B:530:ASP:OD1	1:B:532:GLU:HG2	2.16	0.45
1:A:116:ASN:ND2	1:A:174:LEU:HA	2.30	0.45
1:A:21:LEU:HA	1:A:25:GLN:OE1	2.16	0.45
1:A:214:LEU:HD12	1:A:230:GLU:OE2	2.17	0.45
1:B:123:ASP:CG	1:B:401:LYS:HE2	2.42	0.45
1:B:181:ILE:HG21	1:B:201:PHE:CE1	2.52	0.45
1:B:185:ILE:CG2	1:B:186:ASP:N	2.80	0.45
1:B:250:VAL:HG22	1:B:258:TYR:CG	2.52	0.45
1:B:392:LEU:CD2	1:B:461:VAL:HG13	2.46	0.45
1:A:427:SER:O	1:A:465:ARG:HD3	2.16	0.45
1:A:391:ILE:HD13	1:A:469:ILE:HD11	1.99	0.45
1:B:214:LEU:C	1:B:216:PRO:HD3	2.42	0.45
1:A:100:ASP:OD1	1:A:549:PRO:HA	2.17	0.45
1:A:213:ILE:CB	1:A:375:LYS:HG3	2.46	0.45
1:B:74:PHE:HB2	1:B:523:MSE:HG3	1.99	0.45
1:B:245:LEU:HD11	1:B:412:LEU:CD1	2.47	0.45
1:B:425:ALA:CB	1:B:449:LEU:HG	2.47	0.45
1:B:152:ARG:NH2	1:B:166:GLU:OE1	2.50	0.45
1:B:94:ILE:O	1:B:450:VAL:HA	2.17	0.44
1:B:119:VAL:HB	1:B:420:ILE:CD1	2.42	0.44
1:B:132:LEU:HB2	1:B:149:PHE:HD2	1.82	0.44
1:A:88:LYS:HE3	1:A:490:TYR:O	2.18	0.44
1:B:232:ILE:HD11	1:B:405:LEU:HD11	1.98	0.44

Continued on next page...

Continued from previous page...

Atom-1	Atom-2	Interatomic distance (Å)	Clash overlap (Å)
1:B:185:ILE:HD11	1:B:193:LEU:CD2	2.34	0.44
1:A:419:ARG:HG2	1:A:446:CYS:SG	2.57	0.44
1:A:376:GLY:HA3	1:A:379:PHE:CD1	2.50	0.44
1:B:454:GLU:O	1:B:457:ILE:HG13	2.17	0.44
1:A:156:SER:O	1:A:162:ASN:ND2	2.51	0.44
1:B:452:ASN:O	1:B:458:ALA:HB2	2.18	0.44
1:A:211:PRO:HD2	1:A:372:THR:O	2.18	0.44
1:B:45:ASN:HD21	1:B:64:PRO:CB	2.31	0.44
1:B:257:ILE:CG2	1:B:258:TYR:CE2	3.01	0.44
1:A:109:GLU:OE2	1:A:419:ARG:NH1	2.52	0.43
1:B:441:ASP:OD2	1:B:445:ARG:NH1	2.44	0.43
1:A:247:ASN:HB2	1:A:366:ASN:HB3	2.01	0.43
1:B:70:GLU:HA	1:B:502:PHE:O	2.19	0.43
1:B:104:ASN:O	1:B:108:ILE:HG13	2.19	0.43
1:A:238:VAL:O	1:A:239:ASN:HB2	2.18	0.43
1:B:410:ILE:HG13	1:B:437:LEU:HD22	2.00	0.43
1:A:430:THR:O	1:A:434:VAL:HG23	2.19	0.43
1:B:65:SER:HA	1:B:152:ARG:NH1	2.33	0.43
1:A:56:LEU:HD21	1:B:157:ARG:HG2	2.01	0.43
1:B:211:PRO:HD2	1:B:372:THR:O	2.19	0.43
1:A:153:GLY:O	1:A:156:SER:HB2	2.19	0.42
1:A:467:TYR:CE1	1:A:475:THR:HA	2.53	0.42
1:B:409:LEU:O	1:B:412:LEU:HB2	2.19	0.42
1:B:111:GLN:OE1	1:B:534:LYS:HG2	2.20	0.42
1:B:230:GLU:OE2	1:B:401:LYS:NZ	2.52	0.42
1:A:464:GLU:HG3	1:A:468:ARG:NE	2.34	0.42
1:B:403:VAL:HG22	1:B:429:THR:HG23	2.02	0.42
1:B:459:THR:HG23	1:B:460:ASN:N	2.35	0.42
1:A:58:PHE:CE1	1:B:58:PHE:HB2	2.55	0.42
1:A:232:ILE:HD13	1:A:409:LEU:HD11	2.02	0.42
1:A:503:SER:O	1:A:506:LEU:HB2	2.20	0.42
1:B:183:VAL:HG11	1:B:193:LEU:HD21	2.02	0.42
1:B:453:ASN:HB3	1:B:458:ALA:HB3	2.01	0.42
1:A:116:ASN:HD22	1:A:174:LEU:C	2.27	0.42
1:B:60:PHE:CE1	1:B:62:ILE:HG12	2.54	0.42
1:B:391:ILE:HG12	1:B:483:TRP:CG	2.55	0.42
1:B:520:TYR:CZ	1:B:524:LEU:HD11	2.54	0.42
1:B:72:ALA:C	1:B:104:ASN:HD21	2.28	0.42
1:B:84:ASN:HD21	1:B:471:ASN:ND2	2.18	0.42
1:B:194:LYS:HE2	1:B:198:ASP:CG	2.45	0.42
1:A:391:ILE:CD1	1:A:469:ILE:HD11	2.50	0.41

Continued on next page...

Continued from previous page...

Atom-1	Atom-2	Interatomic distance (Å)	Clash overlap (Å)
1:B:56:LEU:HD12	1:B:56:LEU:HA	1.88	0.41
1:A:185:ILE:HG13	1:A:186:ASP:N	2.34	0.41
1:B:420:ILE:N	1:B:420:ILE:HD13	2.35	0.41
1:A:119:VAL:HB	1:A:420:ILE:HG13	2.02	0.41
1:B:204:GLU:OE1	1:B:204:GLU:N	2.45	0.41
1:A:60:PHE:CE1	1:A:155:PHE:HD1	2.39	0.41
1:B:167:ARG:HH21	1:B:167:ARG:HG3	1.86	0.41
1:B:180:VAL:CG1	1:B:240:PHE:CE2	3.04	0.41
1:B:102:LEU:HD13	1:B:170:MSE:HB2	2.03	0.41
1:B:180:VAL:HG13	1:B:240:PHE:CE1	2.56	0.41
1:A:410:ILE:HD11	1:A:437:LEU:HD23	2.03	0.41
1:A:182:PHE:CD2	1:A:234:ILE:HG13	2.56	0.41
1:A:238:VAL:HG12	1:A:239:ASN:ND2	2.36	0.41
1:A:373:ILE:HG22	1:B:228:THR:HG21	2.02	0.41
1:A:413:HIS:ND1	1:A:414:PRO:HD2	2.36	0.41
1:A:447:TYR:CD1	1:A:449:LEU:HD13	2.56	0.41
1:B:161:LEU:HD23	1:B:161:LEU:HA	1.88	0.41
1:B:469:ILE:CG2	1:B:490:TYR:HD2	2.32	0.41
1:A:388:LEU:CD1	1:A:465:ARG:HD2	2.50	0.41
1:A:419:ARG:HG2	1:A:419:ARG:HH21	1.86	0.41
1:B:136:ASN:ND2	1:B:163:MSE:SE	3.04	0.40
1:A:453:ASN:OD1	1:A:458:ALA:HB3	2.22	0.40
1:B:247:ASN:O	1:B:251:ILE:HG12	2.21	0.40
1:B:395:ASP:N	1:B:395:ASP:OD1	2.55	0.40
1:A:391:ILE:HG12	1:A:469:ILE:HD11	2.03	0.40
1:A:154:LYS:O	1:A:155:PHE:CB	2.69	0.40
1:A:507:PHE:HA	1:A:513:ASN:HB2	2.04	0.40
1:B:385:ASN:HD21	1:B:398:SER:C	2.23	0.40

There are no symmetry-related clashes.

5.3 Torsion angles [i](#)

5.3.1 Protein backbone [i](#)

In the following table, the Percentiles column shows the percent Ramachandran outliers of the chain as a percentile score with respect to all X-ray entries followed by that with respect to entries of similar resolution.

The Analysed column shows the number of residues for which the backbone conformation was analysed, and the total number of residues.

Mol	Chain	Analysed	Favoured	Allowed	Outliers	Percentiles	
1	A	404/567 (71%)	379 (94%)	25 (6%)	0	100	100
1	B	410/567 (72%)	382 (93%)	28 (7%)	0	100	100
All	All	814/1134 (72%)	761 (94%)	53 (6%)	0	100	100

There are no Ramachandran outliers to report.

5.3.2 Protein sidechains [i](#)

In the following table, the Percentiles column shows the percent sidechain outliers of the chain as a percentile score with respect to all X-ray entries followed by that with respect to entries of similar resolution.

The Analysed column shows the number of residues for which the sidechain conformation was analysed, and the total number of residues.

Mol	Chain	Analysed	Rotameric	Outliers	Percentiles	
1	A	307/516 (60%)	286 (93%)	21 (7%)	14	46
1	B	319/516 (62%)	302 (95%)	17 (5%)	20	53
All	All	626/1032 (61%)	588 (94%)	38 (6%)	17	49

All (38) residues with a non-rotameric sidechain are listed below:

Mol	Chain	Res	Type
1	A	17	LEU
1	A	18	SER
1	A	19	ASN
1	A	56	LEU
1	A	97	GLU
1	A	168	LEU
1	A	195	VAL
1	A	207	ILE
1	A	221	VAL
1	A	250	VAL
1	A	366	ASN
1	A	375	LYS
1	A	380	ASN
1	A	396	GLU
1	A	403	VAL
1	A	461	VAL
1	A	493	ASN
1	A	500	GLU

Continued on next page...

Continued from previous page...

Mol	Chain	Res	Type
1	A	504	THR
1	A	506	LEU
1	A	510	ASN
1	B	185	ILE
1	B	207	ILE
1	B	215	ASN
1	B	238	VAL
1	B	245	LEU
1	B	248	GLU
1	B	250	VAL
1	B	373	ILE
1	B	394	SER
1	B	401	LYS
1	B	412	LEU
1	B	441	ASP
1	B	462	CYS
1	B	480	ASN
1	B	493	ASN
1	B	504	THR
1	B	536	SER

Sometimes sidechains can be flipped to improve hydrogen bonding and reduce clashes. All (12) such sidechains are listed below:

Mol	Chain	Res	Type
1	A	91	ASN
1	A	116	ASN
1	A	190	GLN
1	A	239	ASN
1	A	487	ASN
1	A	495	ASN
1	A	525	GLN
1	B	48	GLN
1	B	84	ASN
1	B	136	ASN
1	B	137	ASN
1	B	417	ASN

5.3.3 RNA

There are no RNA molecules in this entry.

5.4 Non-standard residues in protein, DNA, RNA chains [i](#)

There are no non-standard protein/DNA/RNA residues in this entry.

5.5 Carbohydrates [i](#)

There are no oligosaccharides in this entry.

5.6 Ligand geometry [i](#)

3 ligands are modelled in this entry.

In the following table, the Counts columns list the number of bonds (or angles) for which Mogul statistics could be retrieved, the number of bonds (or angles) that are observed in the model and the number of bonds (or angles) that are defined in the Chemical Component Dictionary. The Link column lists molecule types, if any, to which the group is linked. The Z score for a bond length (or angle) is the number of standard deviations the observed value is removed from the expected value. A bond length (or angle) with $|Z| > 2$ is considered an outlier worth inspection. RMSZ is the root-mean-square of all Z scores of the bond lengths (or angles).

Mol	Type	Chain	Res	Link	Bond lengths			Bond angles		
					Counts	RMSZ	# Z > 2	Counts	RMSZ	# Z > 2
3	EDO	B	602	-	3,3,3	0.45	0	2,2,2	0.33	0
2	SFG	B	601	-	28,29,29	1.89	7 (25%)	34,42,42	2.39	11 (32%)
2	SFG	A	601	-	28,29,29	1.94	7 (25%)	34,42,42	2.42	13 (38%)

In the following table, the Chirals column lists the number of chiral outliers, the number of chiral centers analysed, the number of these observed in the model and the number defined in the Chemical Component Dictionary. Similar counts are reported in the Torsion and Rings columns. '2' means no outliers of that kind were identified.

Mol	Type	Chain	Res	Link	Chirals	Torsions	Rings
3	EDO	B	602	-	-	0/1/1/1	-
2	SFG	B	601	-	-	1/17/33/33	0/3/3/3
2	SFG	A	601	-	-	2/17/33/33	0/3/3/3

All (14) bond length outliers are listed below:

Mol	Chain	Res	Type	Atoms	Z	Observed(Å)	Ideal(Å)
2	A	601	SFG	O4'-C4'	-5.85	1.32	1.45
2	B	601	SFG	O4'-C4'	-5.37	1.33	1.45
2	A	601	SFG	C6-N6	4.53	1.45	1.34
2	B	601	SFG	C6-N6	4.51	1.45	1.34

Continued on next page...

Continued from previous page...

Mol	Chain	Res	Type	Atoms	Z	Observed(Å)	Ideal(Å)
2	B	601	SFG	C5-C4	-3.13	1.33	1.39
2	A	601	SFG	C5-C4	-3.08	1.33	1.39
2	B	601	SFG	O3'-C3'	-2.94	1.35	1.43
2	A	601	SFG	O3'-C3'	-2.84	1.35	1.43
2	A	601	SFG	O2'-C2'	2.51	1.49	1.43
2	B	601	SFG	C5-N7	-2.47	1.34	1.39
2	B	601	SFG	O2'-C2'	2.44	1.49	1.43
2	A	601	SFG	C5-N7	-2.41	1.34	1.39
2	B	601	SFG	C8-N9	-2.23	1.33	1.37
2	A	601	SFG	C8-N9	-2.15	1.33	1.37

All (24) bond angle outliers are listed below:

Mol	Chain	Res	Type	Atoms	Z	Observed(°)	Ideal(°)
2	B	601	SFG	N6-C6-N1	-5.81	105.44	118.38
2	A	601	SFG	N6-C6-N1	-5.74	105.60	118.38
2	A	601	SFG	N3-C2-N1	-5.73	119.92	128.58
2	B	601	SFG	N3-C2-N1	-5.52	120.22	128.58
2	B	601	SFG	C5-C4-N3	-5.23	119.52	126.72
2	A	601	SFG	C5-C4-N3	-5.01	119.82	126.72
2	A	601	SFG	C5-C6-N6	4.36	134.08	123.29
2	B	601	SFG	C5-C6-N6	4.32	133.98	123.29
2	A	601	SFG	N9-C8-N7	-4.15	108.05	113.94
2	B	601	SFG	N9-C8-N7	-3.98	108.29	113.94
2	B	601	SFG	C2-N3-C4	3.49	120.36	111.83
2	A	601	SFG	C2-N3-C4	3.43	120.21	111.83
2	B	601	SFG	N3-C4-N9	3.04	132.33	127.17
2	A	601	SFG	C5-N7-C8	2.96	108.10	103.45
2	A	601	SFG	N3-C4-N9	2.94	132.16	127.17
2	B	601	SFG	C5-N7-C8	2.85	107.92	103.45
2	A	601	SFG	C4-C5-N7	-2.34	107.90	110.58
2	B	601	SFG	C4-C5-N7	-2.31	107.94	110.58
2	B	601	SFG	C3'-C2'-C1'	-2.18	97.35	101.46
2	A	601	SFG	C3'-C2'-C1'	-2.16	97.37	101.46
2	B	601	SFG	C5-C4-N9	2.15	108.15	105.81
2	A	601	SFG	OXT-C-O	-2.10	119.32	124.08
2	A	601	SFG	C4-N9-C8	2.09	107.93	105.74
2	A	601	SFG	C5-C4-N9	2.02	108.02	105.81

There are no chirality outliers.

All (3) torsion outliers are listed below:

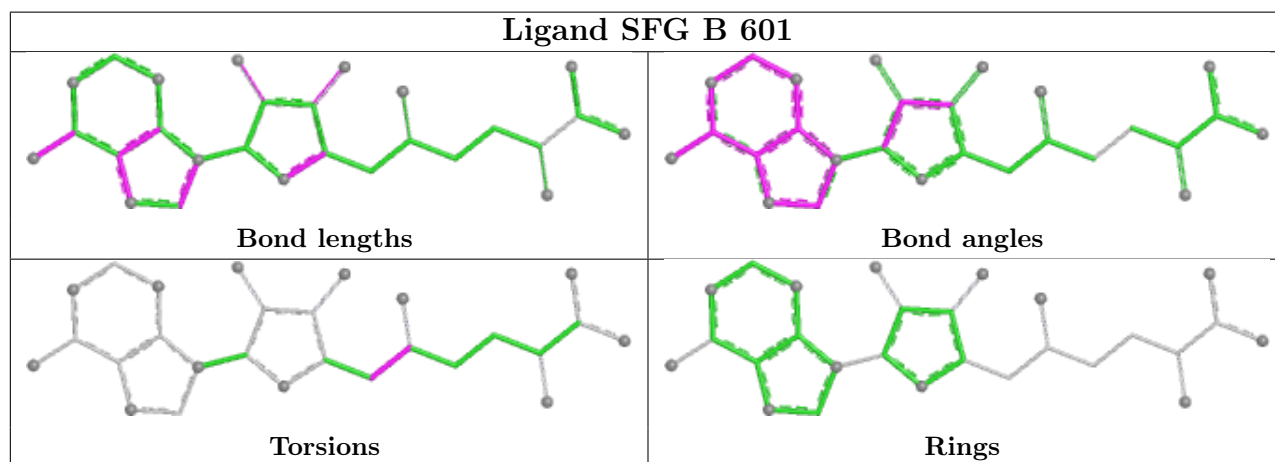
Mol	Chain	Res	Type	Atoms
2	A	601	SFG	C2'-C1'-N9-C8
2	A	601	SFG	C4'-C5'-CD-NE
2	B	601	SFG	C4'-C5'-CD-NE

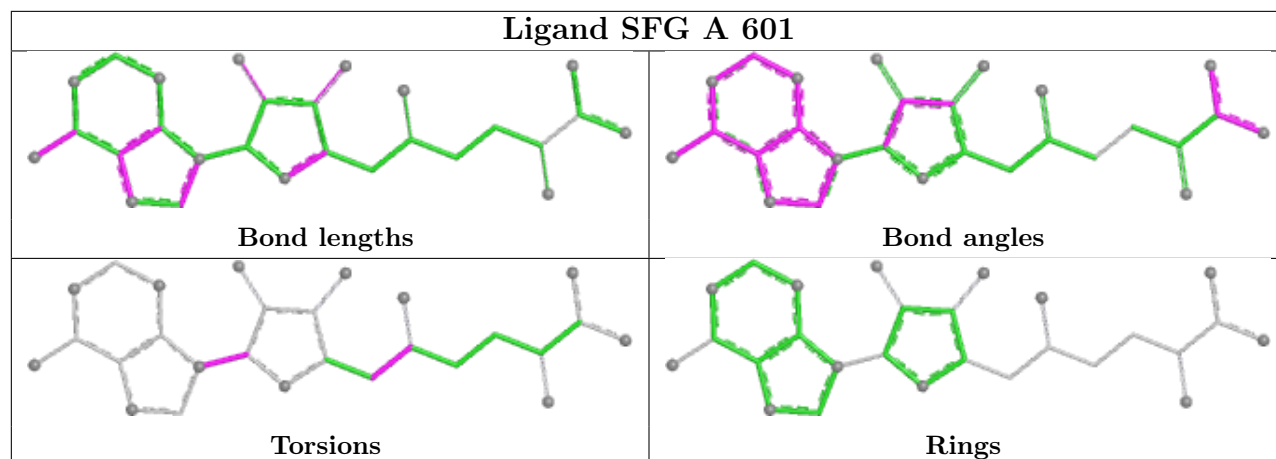
There are no ring outliers.

3 monomers are involved in 9 short contacts:

Mol	Chain	Res	Type	Clashes	Symm-Clashes
3	B	602	EDO	3	0
2	B	601	SFG	6	0
2	A	601	SFG	3	0

The following is a two-dimensional graphical depiction of Mogul quality analysis of bond lengths, bond angles, torsion angles, and ring geometry for all instances of the Ligand of Interest. In addition, ligands with molecular weight > 250 and outliers as shown on the validation Tables will also be included. For torsion angles, if less than 5% of the Mogul distribution of torsion angles is within 10 degrees of the torsion angle in question, then that torsion angle is considered an outlier. Any bond that is central to one or more torsion angles identified as an outlier by Mogul will be highlighted in the graph. For rings, the root-mean-square deviation (RMSD) between the ring in question and similar rings identified by Mogul is calculated over all ring torsion angles. If the average RMSD is greater than 60 degrees and the minimal RMSD between the ring in question and any Mogul-identified rings is also greater than 60 degrees, then that ring is considered an outlier. The outliers are highlighted in purple. The color gray indicates Mogul did not find sufficient equivalents in the CSD to analyse the geometry.





5.7 Other polymers [i](#)

There are no such residues in this entry.

5.8 Polymer linkage issues [i](#)

There are no chain breaks in this entry.

6 Fit of model and data

6.1 Protein, DNA and RNA chains

In the following table, the column labelled ‘#RSRZ > 2’ contains the number (and percentage) of RSRZ outliers, followed by percent RSRZ outliers for the chain as percentile scores relative to all X-ray entries and entries of similar resolution. The OWAB column contains the minimum, median, 95th percentile and maximum values of the occupancy-weighted average B-factor per residue. The column labelled ‘Q < 0.9’ lists the number of (and percentage) of residues with an average occupancy less than 0.9.

Mol	Chain	Analysed	<RSRZ>	#RSRZ>2	OWAB(Å ²)	Q<0.9
1	A	405/567 (71%)	0.66	34 (8%) 17 11	73, 113, 203, 263	0
1	B	413/567 (72%)	0.63	37 (8%) 15 10	65, 112, 208, 238	0
All	All	818/1134 (72%)	0.65	71 (8%) 16 11	65, 112, 208, 263	0

All (71) RSRZ outliers are listed below:

Mol	Chain	Res	Type	RSRZ
1	A	260	ASN	6.3
1	B	528	ASN	4.7
1	B	136	ASN	4.6
1	B	238	VAL	4.0
1	B	134	ASP	4.0
1	B	47	TYR	3.7
1	A	165	ASN	3.5
1	A	161	LEU	3.5
1	A	4	ILE	3.5
1	B	90	THR	3.4
1	B	481	PHE	3.4
1	B	42	ALA	3.4
1	A	221	VAL	3.4
1	B	82	PHE	3.3
1	B	12	ALA	3.3
1	B	260	ASN	3.2
1	A	218	GLY	3.2
1	B	128	THR	3.2
1	B	224	GLU	3.2
1	A	476	ASN	3.2
1	A	508	ASP	3.1
1	B	459	THR	3.0
1	A	205	ASN	3.0
1	A	117	TYR	3.0

Continued on next page...

Continued from previous page...

Mol	Chain	Res	Type	RSRZ
1	B	497	TYR	3.0
1	B	479	SER	2.9
1	A	479	SER	2.9
1	B	135	GLY	2.9
1	A	164	LEU	2.8
1	B	223	THR	2.7
1	A	7	ASP	2.7
1	A	532	GLU	2.7
1	A	222	ASN	2.7
1	B	220	GLN	2.6
1	A	533	ASP	2.6
1	A	220	GLN	2.6
1	B	147	SER	2.6
1	B	496	VAL	2.6
1	A	235	TYR	2.6
1	B	380	ASN	2.6
1	A	419	ARG	2.6
1	B	69	SER	2.6
1	A	175	LEU	2.5
1	B	470	ASN	2.5
1	A	23	GLN	2.5
1	A	223	THR	2.5
1	A	475	THR	2.5
1	B	467	TYR	2.5
1	A	127	ASN	2.4
1	B	146	SER	2.4
1	B	43	LEU	2.3
1	A	366	ASN	2.3
1	B	457	ILE	2.2
1	A	219	ARG	2.2
1	B	113	GLU	2.2
1	A	526	ASP	2.2
1	A	160	TRP	2.2
1	B	469	ILE	2.1
1	B	66	VAL	2.1
1	A	6	GLN	2.1
1	B	495	ASN	2.1
1	A	126	TYR	2.1
1	A	227	LEU	2.1
1	A	367	THR	2.1
1	B	480	ASN	2.0
1	A	525	GLN	2.0

Continued on next page...

Continued from previous page...

Mol	Chain	Res	Type	RSRZ
1	B	129	GLU	2.0
1	B	21	LEU	2.0
1	B	453	ASN	2.0
1	A	231	TYR	2.0
1	B	78	GLU	2.0

6.2 Non-standard residues in protein, DNA, RNA chains [i](#)

There are no non-standard protein/DNA/RNA residues in this entry.

6.3 Carbohydrates [i](#)

There are no oligosaccharides in this entry.

6.4 Ligands [i](#)

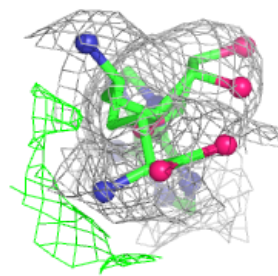
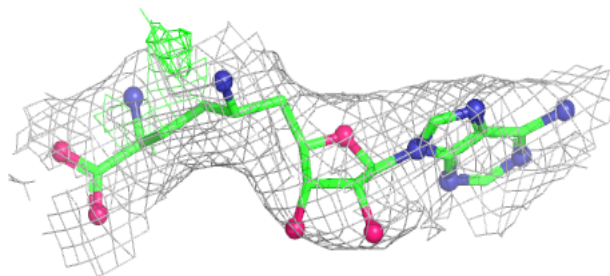
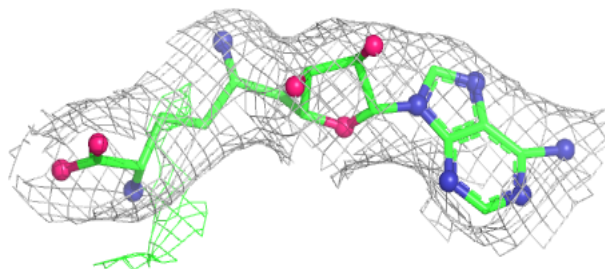
In the following table, the Atoms column lists the number of modelled atoms in the group and the number defined in the chemical component dictionary. The B-factors column lists the minimum, median, 95th percentile and maximum values of B factors of atoms in the group. The column labelled 'Q< 0.9' lists the number of atoms with occupancy less than 0.9.

Mol	Type	Chain	Res	Atoms	RSCC	RSR	B-factors(Å ²)	Q<0.9
3	EDO	B	602	4/4	0.71	0.31	126,127,153,154	0
2	SFG	A	601	27/27	0.90	0.12	79,98,109,110	0
2	SFG	B	601	27/27	0.91	0.13	82,97,115,116	0

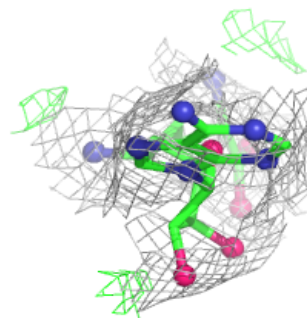
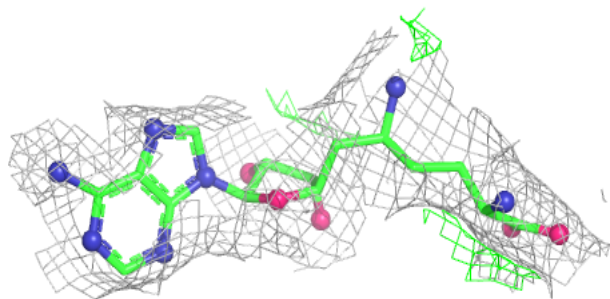
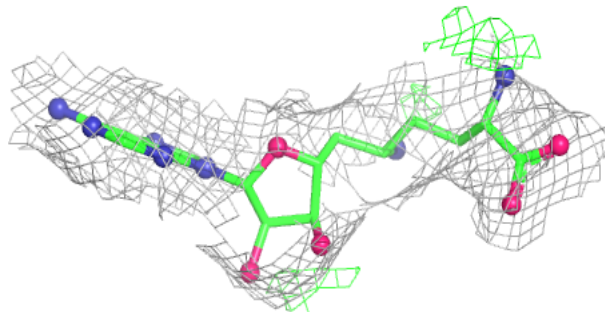
The following is a graphical depiction of the model fit to experimental electron density of all instances of the Ligand of Interest. In addition, ligands with molecular weight > 250 and outliers as shown on the geometry validation Tables will also be included. Each fit is shown from different orientation to approximate a three-dimensional view.

Electron density around SFG A 601:

$2mF_o-DF_c$ (at 0.7 rmsd) in gray
 mF_o-DF_c (at 3 rmsd) in purple (negative)
and green (positive)

**Electron density around SFG B 601:**

$2mF_o-DF_c$ (at 0.7 rmsd) in gray
 mF_o-DF_c (at 3 rmsd) in purple (negative)
and green (positive)



6.5 Other polymers [i](#)

There are no such residues in this entry.