



wwPDB X-ray Structure Validation Summary Report ⓘ

Mar 20, 2026 – 02:07 AM UTC

PDB ID : 3DYO / pdb_00003dyo
Title : E. coli (lacZ) beta-galactosidase (H418N) in complex with IPTG
Authors : Juers, D.H.; Huber, R.E.; Matthews, B.W.
Deposited on : 2008-07-28
Resolution : 1.80 Å(reported)

This is a wwPDB X-ray Structure Validation Summary Report for a publicly released PDB entry.

We welcome your comments at validation@mail.wwpdb.org

A user guide is available at

<https://www.wwpdb.org/validation/2017/XrayValidationReportHelp>

with specific help available everywhere you see the ⓘ symbol.

The types of validation reports are described at

<http://www.wwpdb.org/validation/2017/FAQs#types>.

The following versions of software and data (see [references ⓘ](#)) were used in the production of this report:

MolProbity : 4-5-2 with Phenix2.0
Mogul : 2022.3.0, CSD as543be (2022)
Xtriage (Phenix) : 2.0
EDS : 3.0
Percentile statistics : 20250101.v01 (using entries in the PDB archive January 1st 2025)
CCP4 : 9.0.010 (Gargrove)
Density-Fitness : 1.0.12
Ideal geometry (proteins) : Engh & Huber (2001)
Ideal geometry (DNA, RNA) : Parkinson et al. (1996)
Validation Pipeline (wwPDB-VP) : 2.49

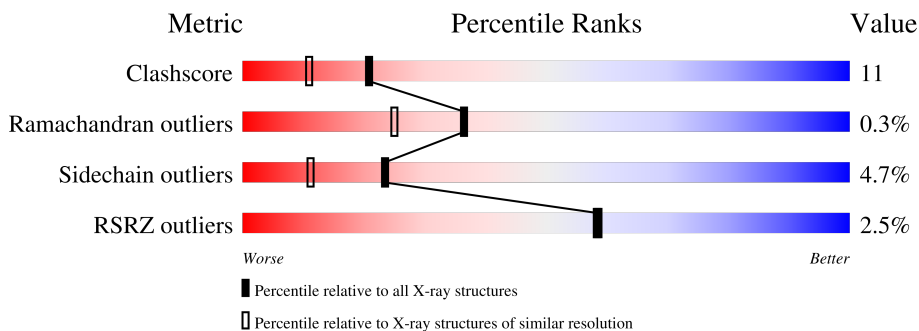
1 Overall quality at a glance

The following experimental techniques were used to determine the structure:

X-RAY DIFFRACTION

The reported resolution of this entry is 1.80 Å.

Percentile scores (ranging between 0-100) for global validation metrics of the entry are shown in the following graphic. The table shows the number of entries on which the scores are based.



Metric	Whole archive (#Entries)	Similar resolution (#Entries, resolution range(Å))
Clashscore	190562	8479 (1.80-1.80)
Ramachandran outliers	187476	8391 (1.80-1.80)
Sidechain outliers	187428	8390 (1.80-1.80)
RSRZ outliers	180081	7663 (1.80-1.80)

The table below summarises the geometric issues observed across the polymeric chains and their fit to the electron density. The red, orange, yellow and green segments of the lower bar indicate the fraction of residues that contain outliers for ≥ 3 , 2, 1 and 0 types of geometric quality criteria respectively. A grey segment represents the fraction of residues that are not modelled. The numeric value for each fraction is indicated below the corresponding segment, with a dot representing fractions $\leq 5\%$. The upper red bar (where present) indicates the fraction of residues that have poor fit to the electron density. The numeric value is given above the bar.

Mol	Chain	Length	Quality of chain
1	A	1023	
1	B	1023	
1	C	1023	
1	D	1023	

The following table lists non-polymeric compounds, carbohydrate monomers and non-standard residues in protein, DNA, RNA chains that are outliers for geometric or electron-density-fit criteria:

Mol	Type	Chain	Res	Chirality	Geometry	Clashes	Electron density
5	DMS	A	8414	-	-	X	-
5	DMS	B	8412	-	-	X	-
5	DMS	B	8504	-	-	X	-
5	DMS	B	8506	-	-	X	-
5	DMS	C	8411	-	-	X	-
5	DMS	C	8412	-	-	X	-
5	DMS	D	8403	-	-	X	-

2 Entry composition [i](#)

There are 6 unique types of molecules in this entry. The entry contains 36820 atoms, of which 0 are hydrogens and 0 are deuteriums.

In the tables below, the ZeroOcc column contains the number of atoms modelled with zero occupancy, the AltConf column contains the number of residues with at least one atom in alternate conformation and the Trace column contains the number of residues modelled with at most 2 atoms.

- Molecule 1 is a protein called Beta-galactosidase.

Mol	Chain	Residues	Atoms					ZeroOcc	AltConf	Trace
1	A	1011	Total	C	N	O	S	0	0	0
			8123	5136	1439	1510	38			
1	B	1011	Total	C	N	O	S	0	0	0
			8123	5136	1439	1510	38			
1	C	1011	Total	C	N	O	S	0	0	0
			8123	5136	1439	1510	38			
1	D	1011	Total	C	N	O	S	0	0	0
			8123	5136	1439	1510	38			

There are 36 discrepancies between the modelled and reference sequences:

Chain	Residue	Modelled	Actual	Comment	Reference
A	1	GLY	-	expression tag	UNP P00722
A	2	SER	-	expression tag	UNP P00722
A	3	HIS	-	expression tag	UNP P00722
A	4	MET	-	expression tag	UNP P00722
A	5	LEU	-	expression tag	UNP P00722
A	6	GLU	-	expression tag	UNP P00722
A	7	ASP	-	expression tag	UNP P00722
A	8	PRO	-	expression tag	UNP P00722
A	418	ASN	HIS	engineered mutation	UNP P00722
B	1	GLY	-	expression tag	UNP P00722
B	2	SER	-	expression tag	UNP P00722
B	3	HIS	-	expression tag	UNP P00722
B	4	MET	-	expression tag	UNP P00722
B	5	LEU	-	expression tag	UNP P00722
B	6	GLU	-	expression tag	UNP P00722
B	7	ASP	-	expression tag	UNP P00722
B	8	PRO	-	expression tag	UNP P00722
B	418	ASN	HIS	engineered mutation	UNP P00722
C	1	GLY	-	expression tag	UNP P00722
C	2	SER	-	expression tag	UNP P00722
C	3	HIS	-	expression tag	UNP P00722

Continued on next page...

Continued from previous page...

Chain	Residue	Modelled	Actual	Comment	Reference
C	4	MET	-	expression tag	UNP P00722
C	5	LEU	-	expression tag	UNP P00722
C	6	GLU	-	expression tag	UNP P00722
C	7	ASP	-	expression tag	UNP P00722
C	8	PRO	-	expression tag	UNP P00722
C	418	ASN	HIS	engineered mutation	UNP P00722
D	1	GLY	-	expression tag	UNP P00722
D	2	SER	-	expression tag	UNP P00722
D	3	HIS	-	expression tag	UNP P00722
D	4	MET	-	expression tag	UNP P00722
D	5	LEU	-	expression tag	UNP P00722
D	6	GLU	-	expression tag	UNP P00722
D	7	ASP	-	expression tag	UNP P00722
D	8	PRO	-	expression tag	UNP P00722
D	418	ASN	HIS	engineered mutation	UNP P00722

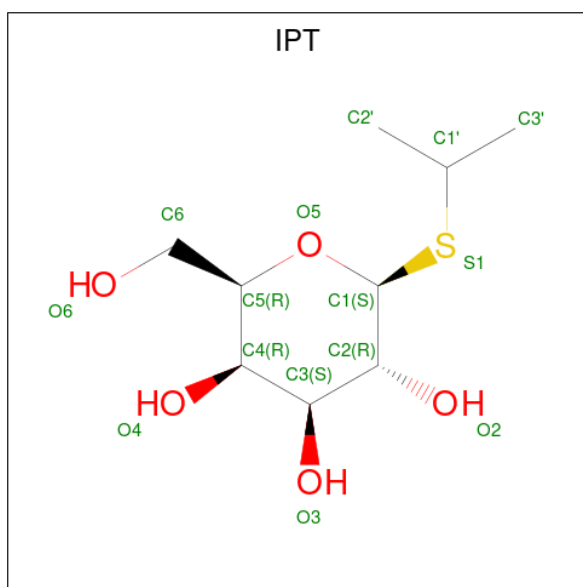
- Molecule 2 is MAGNESIUM ION (CCD ID: MG) (formula: Mg).

Mol	Chain	Residues	Atoms	ZeroOcc	AltConf
2	A	4	Total Mg 4 4	0	0
2	B	4	Total Mg 4 4	0	0
2	C	3	Total Mg 3 3	0	0
2	D	3	Total Mg 3 3	0	0

- Molecule 3 is SODIUM ION (CCD ID: NA) (formula: Na).

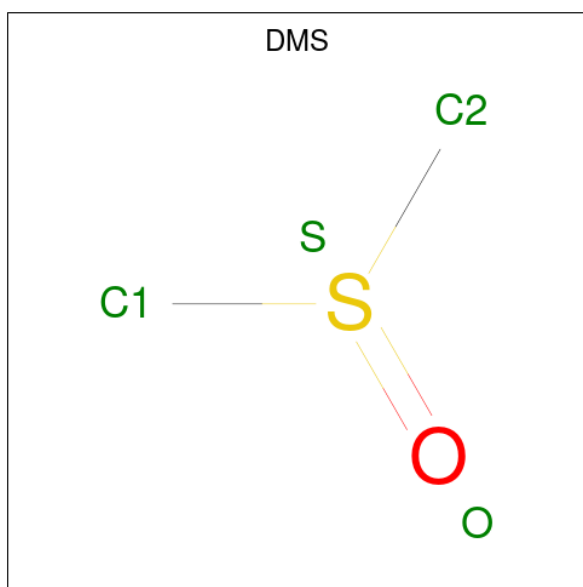
Mol	Chain	Residues	Atoms	ZeroOcc	AltConf
3	A	4	Total Na 4 4	0	0
3	B	5	Total Na 5 5	0	0
3	C	5	Total Na 5 5	0	0
3	D	4	Total Na 4 4	0	0

- Molecule 4 is 1-methylethyl 1-thio-beta-D-galactopyranoside (CCD ID: IPT) (formula: C₉H₁₈O₅S).



Mol	Chain	Residues	Atoms				ZeroOcc	AltConf
4	A	1	Total	C	O	S	0	0
			15	9	5	1		
4	A	1	Total	C	O	S	0	0
			15	9	5	1		
4	A	1	Total	C	O	S	0	0
			15	9	5	1		
4	B	1	Total	C	O	S	0	0
			15	9	5	1		
4	B	1	Total	C	O	S	0	0
			15	9	5	1		
4	B	1	Total	C	O	S	0	0
			15	9	5	1		
4	C	1	Total	C	O	S	0	0
			15	9	5	1		
4	C	1	Total	C	O	S	0	0
			15	9	5	1		
4	C	1	Total	C	O	S	0	0
			15	9	5	1		
4	D	1	Total	C	O	S	0	0
			15	9	5	1		
4	D	1	Total	C	O	S	0	0
			15	9	5	1		
4	D	1	Total	C	O	S	0	0
			15	9	5	1		

- Molecule 5 is DIMETHYL SULFOXIDE (CCD ID: DMS) (formula: C₂H₆OS).



Mol	Chain	Residues	Atoms				ZeroOcc	AltConf
5	A	1	Total	C	O	S	0	0
			4	2	1	1		
5	A	1	Total	C	O	S	0	0
			4	2	1	1		
5	A	1	Total	C	O	S	0	0
			4	2	1	1		
5	A	1	Total	C	O	S	0	0
			4	2	1	1		
5	A	1	Total	C	O	S	0	0
			4	2	1	1		
5	A	1	Total	C	O	S	0	0
			4	2	1	1		
5	A	1	Total	C	O	S	0	0
			4	2	1	1		
5	A	1	Total	C	O	S	0	0
			4	2	1	1		
5	A	1	Total	C	O	S	0	0
			4	2	1	1		
5	A	1	Total	C	O	S	0	0
			4	2	1	1		

Continued on next page...

Continued from previous page...

Mol	Chain	Residues	Atoms				ZeroOcc	AltConf
5	A	1	Total 4	C 2	O 1	S 1	0	0
5	A	1	Total 4	C 2	O 1	S 1	0	0
5	A	1	Total 4	C 2	O 1	S 1	0	0
5	A	1	Total 4	C 2	O 1	S 1	0	0
5	A	1	Total 4	C 2	O 1	S 1	0	0
5	A	1	Total 4	C 2	O 1	S 1	0	0
5	A	1	Total 4	C 2	O 1	S 1	0	0
5	A	1	Total 4	C 2	O 1	S 1	0	0
5	A	1	Total 4	C 2	O 1	S 1	0	0
5	A	1	Total 4	C 2	O 1	S 1	0	0
5	A	1	Total 4	C 2	O 1	S 1	0	0
5	B	1	Total 4	C 2	O 1	S 1	0	0
5	B	1	Total 4	C 2	O 1	S 1	0	0
5	B	1	Total 4	C 2	O 1	S 1	0	0
5	B	1	Total 4	C 2	O 1	S 1	0	0
5	B	1	Total 4	C 2	O 1	S 1	0	0
5	B	1	Total 4	C 2	O 1	S 1	0	0
5	B	1	Total 4	C 2	O 1	S 1	0	0
5	B	1	Total 4	C 2	O 1	S 1	0	0
5	B	1	Total 4	C 2	O 1	S 1	0	0
5	B	1	Total 4	C 2	O 1	S 1	0	0
5	B	1	Total 4	C 2	O 1	S 1	0	0

Continued on next page...

Continued from previous page...

Mol	Chain	Residues	Atoms				ZeroOcc	AltConf
5	B	1	Total 4	C 2	O 1	S 1	0	0
5	B	1	Total 4	C 2	O 1	S 1	0	0
5	B	1	Total 4	C 2	O 1	S 1	0	0
5	B	1	Total 4	C 2	O 1	S 1	0	0
5	B	1	Total 4	C 2	O 1	S 1	0	0
5	B	1	Total 4	C 2	O 1	S 1	0	0
5	B	1	Total 4	C 2	O 1	S 1	0	0
5	B	1	Total 4	C 2	O 1	S 1	0	0
5	B	1	Total 4	C 2	O 1	S 1	0	0
5	B	1	Total 4	C 2	O 1	S 1	0	0
5	B	1	Total 4	C 2	O 1	S 1	0	0
5	B	1	Total 4	C 2	O 1	S 1	0	0
5	B	1	Total 4	C 2	O 1	S 1	0	0
5	B	1	Total 4	C 2	O 1	S 1	0	0
5	B	1	Total 4	C 2	O 1	S 1	0	0
5	B	1	Total 4	C 2	O 1	S 1	0	0
5	C	1	Total 4	C 2	O 1	S 1	0	0
5	C	1	Total 4	C 2	O 1	S 1	0	0
5	C	1	Total 4	C 2	O 1	S 1	0	0
5	C	1	Total 4	C 2	O 1	S 1	0	0
5	C	1	Total 4	C 2	O 1	S 1	0	0

Continued on next page...

Continued from previous page...

Mol	Chain	Residues	Atoms				ZeroOcc	AltConf
5	C	1	Total 4	C 2	O 1	S 1	0	0
5	C	1	Total 4	C 2	O 1	S 1	0	0
5	C	1	Total 4	C 2	O 1	S 1	0	0
5	C	1	Total 4	C 2	O 1	S 1	0	0
5	C	1	Total 4	C 2	O 1	S 1	0	0
5	C	1	Total 4	C 2	O 1	S 1	0	0
5	C	1	Total 4	C 2	O 1	S 1	0	0
5	C	1	Total 4	C 2	O 1	S 1	0	0
5	C	1	Total 4	C 2	O 1	S 1	0	0
5	C	1	Total 4	C 2	O 1	S 1	0	0
5	C	1	Total 4	C 2	O 1	S 1	0	0
5	C	1	Total 4	C 2	O 1	S 1	0	0
5	C	1	Total 4	C 2	O 1	S 1	0	0
5	C	1	Total 4	C 2	O 1	S 1	0	0
5	C	1	Total 4	C 2	O 1	S 1	0	0
5	C	1	Total 4	C 2	O 1	S 1	0	0
5	C	1	Total 4	C 2	O 1	S 1	0	0
5	C	1	Total 4	C 2	O 1	S 1	0	0
5	D	1	Total 4	C 2	O 1	S 1	0	0
5	D	1	Total 4	C 2	O 1	S 1	0	0
5	D	1	Total 4	C 2	O 1	S 1	0	0

Continued on next page...

Continued from previous page...

Mol	Chain	Residues	Atoms				ZeroOcc	AltConf
5	D	1	Total	C	O	S	0	0
			4	2	1	1		
5	D	1	Total	C	O	S	0	0
			4	2	1	1		
5	D	1	Total	C	O	S	0	0
			4	2	1	1		
5	D	1	Total	C	O	S	0	0
			4	2	1	1		
5	D	1	Total	C	O	S	0	0
			4	2	1	1		
5	D	1	Total	C	O	S	0	0
			4	2	1	1		
5	D	1	Total	C	O	S	0	0
			4	2	1	1		
5	D	1	Total	C	O	S	0	0
			4	2	1	1		
5	D	1	Total	C	O	S	0	0
			4	2	1	1		
5	D	1	Total	C	O	S	0	0
			4	2	1	1		
5	D	1	Total	C	O	S	0	0
			4	2	1	1		
5	D	1	Total	C	O	S	0	0
			4	2	1	1		
5	D	1	Total	C	O	S	0	0
			4	2	1	1		
5	D	1	Total	C	O	S	0	0
			4	2	1	1		
5	D	1	Total	C	O	S	0	0
			4	2	1	1		

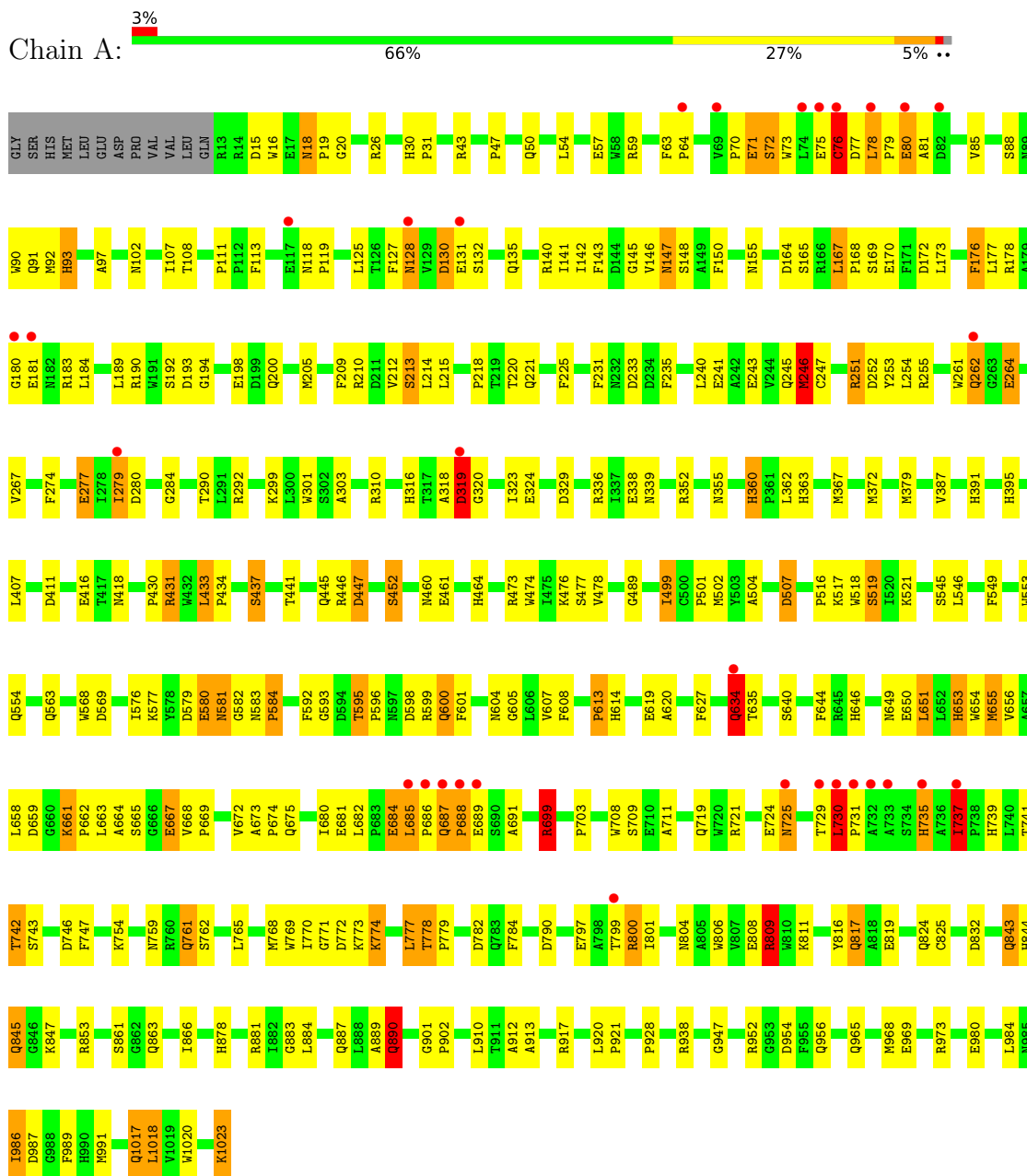
- Molecule 6 is water.

Mol	Chain	Residues	Atoms		ZeroOcc	AltConf
6	A	862	Total 862	O 862	0	0
6	B	995	Total 995	O 995	0	0
6	C	974	Total 974	O 974	0	0
6	D	897	Total 897	O 897	0	0

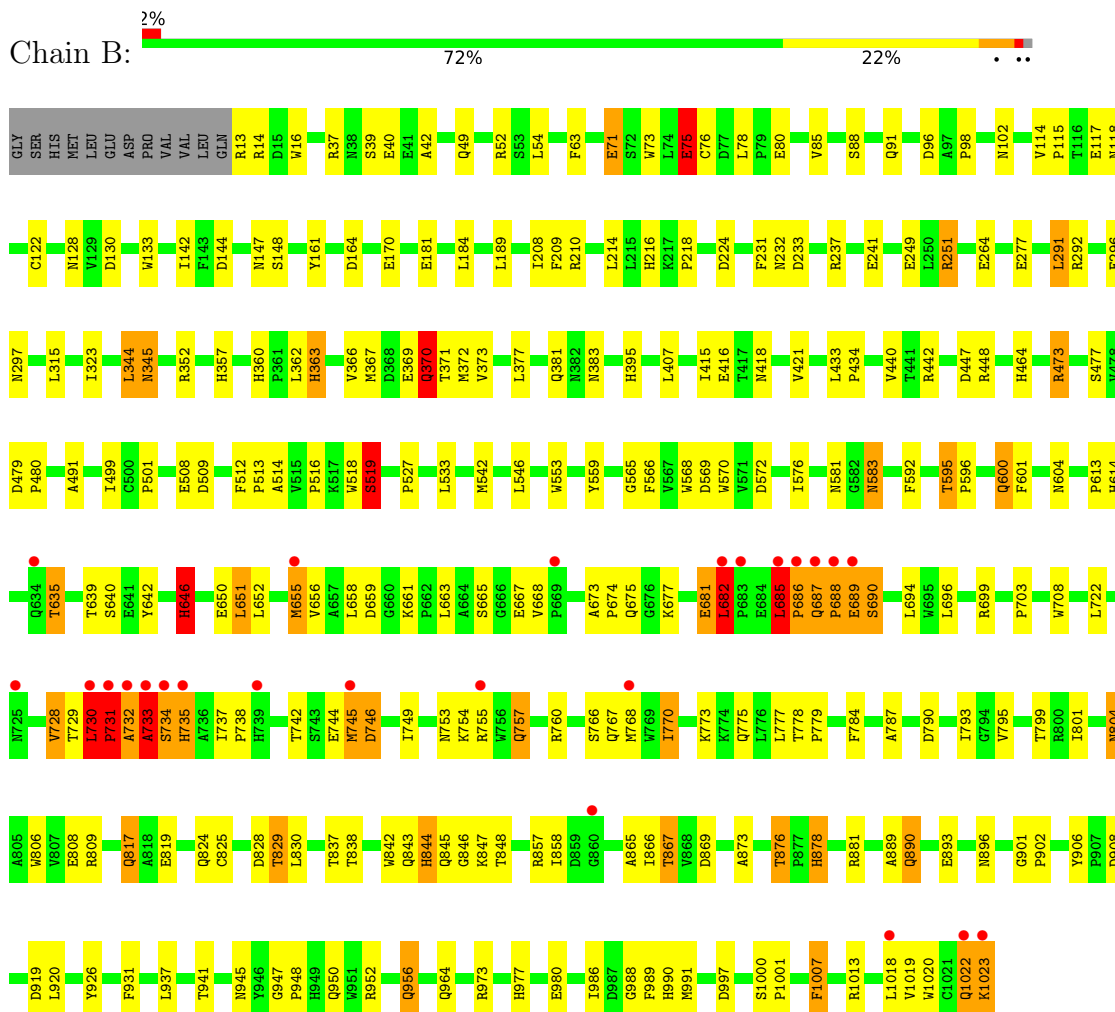
3 Residue-property plots

These plots are drawn for all protein, RNA, DNA and oligosaccharide chains in the entry. The first graphic for a chain summarises the proportions of the various outlier classes displayed in the second graphic. The second graphic shows the sequence view annotated by issues in geometry and electron density. Residues are color-coded according to the number of geometric quality criteria for which they contain at least one outlier: green = 0, yellow = 1, orange = 2 and red = 3 or more. A red dot above a residue indicates a poor fit to the electron density ($RSRZ > 2$). Stretches of 2 or more consecutive residues without any outlier are shown as a green connector. Residues present in the sample, but not in the model, are shown in grey.

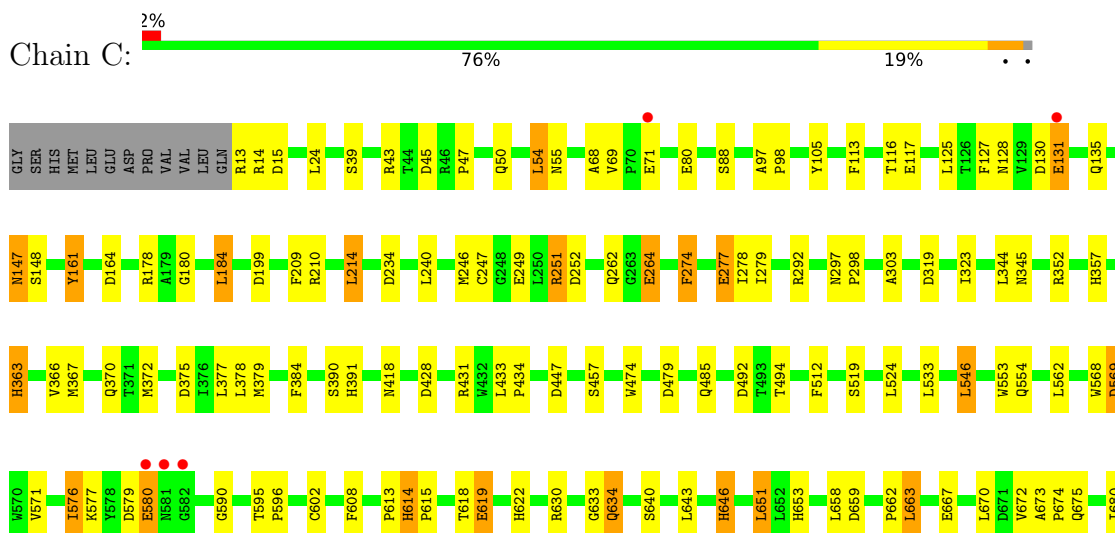
- Molecule 1: Beta-galactosidase

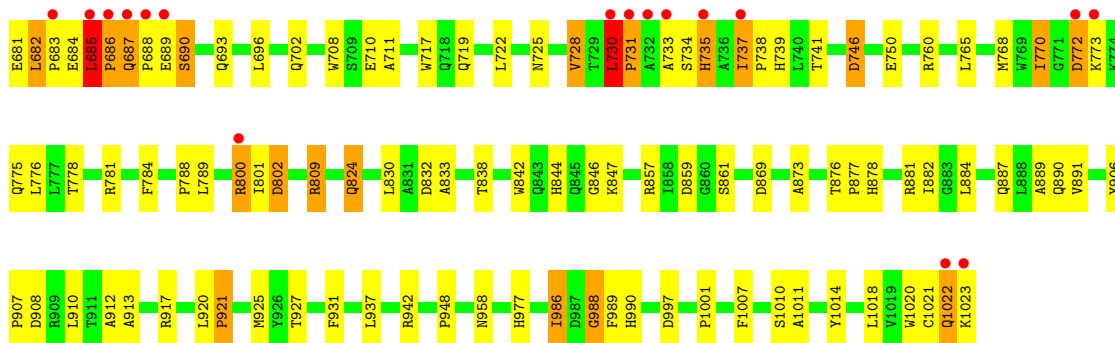


- Molecule 1: Beta-galactosidase

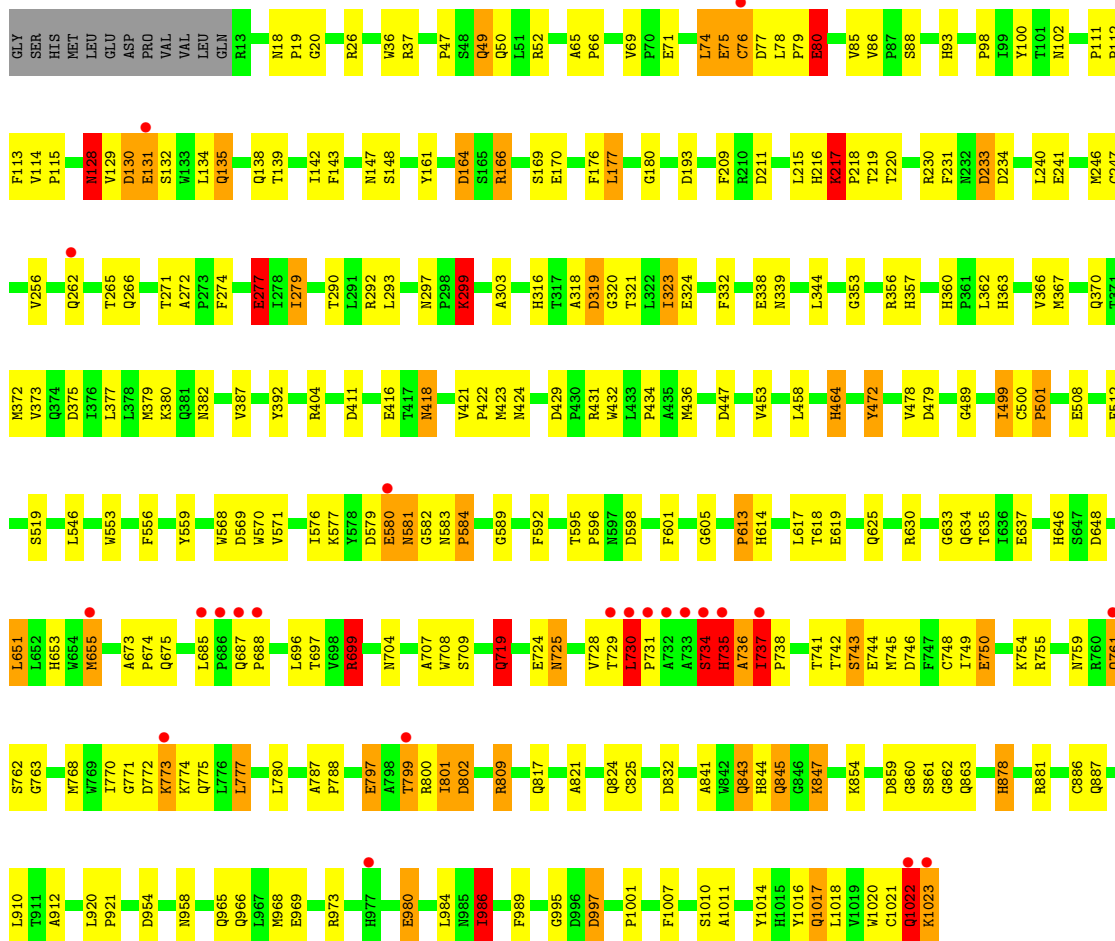


- Molecule 1: Beta-galactosidase





● Molecule 1: Beta-galactosidase



4 Data and refinement statistics i

Property	Value	Source
Space group	P 21 21 21	Depositor
Cell constants a, b, c, α , β , γ	152.01Å 162.52Å 204.01Å 90.00° 90.00° 90.00°	Depositor
Resolution (Å)	30.00 – 1.80 30.00 – 1.80	Depositor EDS
% Data completeness (in resolution range)	98.0 (30.00-1.80) 97.7 (30.00-1.80)	Depositor EDS
R_{merge}	0.09	Depositor
R_{sym}	0.08	Depositor
$\langle I/\sigma(I) \rangle$ ¹	2.61 (at 1.80Å)	Xtrriage
Refinement program	TNT	Depositor
R, R_{free}	0.173 , 0.241 0.175 , (Not available)	Depositor DCC
R_{free} test set	No test flags present.	wwPDB-VP
Wilson B-factor (Å ²)	17.4	Xtrriage
Anisotropy	0.149	Xtrriage
Bulk solvent k_{sol} (e/Å ³), B_{sol} (Å ²)	0.38 , 87.3	EDS
L-test for twinning ²	$\langle L \rangle = 0.50$, $\langle L^2 \rangle = 0.33$	Xtrriage
Estimated twinning fraction	No twinning to report.	Xtrriage
F_o, F_c correlation	0.96	EDS
Total number of atoms	36820	wwPDB-VP
Average B, all atoms (Å ²)	25.0	wwPDB-VP

Xtrriage's analysis on translational NCS is as follows: *The analyses of the Patterson function reveals a significant off-origin peak that is 40.80 % of the origin peak, indicating pseudo-translational symmetry. The chance of finding a peak of this or larger height randomly in a structure without pseudo-translational symmetry is equal to 2.5942e-04. The detected translational NCS is most likely also responsible for the elevated intensity ratio.*

¹Intensities estimated from amplitudes.

²Theoretical values of $\langle |L| \rangle$, $\langle L^2 \rangle$ for acentric reflections are 0.5, 0.333 respectively for untwinned datasets, and 0.375, 0.2 for perfectly twinned datasets.

5 Model quality [i](#)

5.1 Standard geometry [i](#)

Bond lengths and bond angles in the following residue types are not validated in this section: NA, IPT, DMS, MG

The Z score for a bond length (or angle) is the number of standard deviations the observed value is removed from the expected value. A bond length (or angle) with $|Z| > 5$ is considered an outlier worth inspection. RMSZ is the root-mean-square of all Z scores of the bond lengths (or angles).

Mol	Chain	Bond lengths		Bond angles	
		RMSZ	# Z >5	RMSZ	# Z >5
1	A	1.28	4/8364 (0.0%)	1.82	146/11411 (1.3%)
1	B	1.31	10/8364 (0.1%)	1.81	148/11411 (1.3%)
1	C	1.30	8/8364 (0.1%)	1.78	118/11411 (1.0%)
1	D	1.25	10/8364 (0.1%)	1.79	136/11411 (1.2%)
All	All	1.28	32/33456 (0.1%)	1.80	548/45644 (1.2%)

The worst 5 of 32 bond length outliers are listed below:

Mol	Chain	Res	Type	Atoms	Z	Observed(Å)	Ideal(Å)
1	B	297	ASN	C-O	-6.42	1.20	1.23
1	A	233	ASP	CA-C	-5.99	1.45	1.52
1	B	990	HIS	CE1-NE2	5.99	1.38	1.32
1	D	353	GLY	N-CA	5.94	1.50	1.44
1	D	802	ASP	C-N	-5.85	1.26	1.33

The worst 5 of 548 bond angle outliers are listed below:

Mol	Chain	Res	Type	Atoms	Z	Observed(°)	Ideal(°)
1	C	1022	GLN	OE1-CD-NE2	-15.95	106.65	122.60
1	B	735	HIS	CA-CB-CG	-14.00	99.80	113.80
1	A	319	ASP	CA-CB-CG	12.04	124.64	112.60
1	C	735	HIS	CA-CB-CG	-11.95	101.86	113.80
1	B	734	SER	N-CA-C	11.83	128.73	108.02

There are no chirality outliers.

There are no planarity outliers.

5.2 Too-close contacts

In the following table, the Non-H and H(model) columns list the number of non-hydrogen atoms and hydrogen atoms in the chain respectively. The H(added) column lists the number of hydrogen atoms added and optimized by MolProbity. The Clashes column lists the number of clashes within the asymmetric unit, whereas Symm-Clashes lists symmetry-related clashes.

Mol	Chain	Non-H	H(model)	H(added)	Clashes	Symm-Clashes
1	A	8123	0	7715	230	0
1	B	8123	0	7715	158	0
1	C	8123	0	7715	142	0
1	D	8123	0	7715	173	0
2	A	4	0	0	0	0
2	B	4	0	0	0	0
2	C	3	0	0	0	0
2	D	3	0	0	0	0
3	A	4	0	0	0	0
3	B	5	0	0	0	0
3	C	5	0	0	0	0
3	D	4	0	0	0	0
4	A	45	0	53	0	0
4	B	45	0	53	4	0
4	C	45	0	53	2	0
4	D	45	0	53	1	0
5	A	96	0	144	21	0
5	B	104	0	156	28	0
5	C	96	0	144	30	0
5	D	92	0	138	16	0
6	A	862	0	0	21	0
6	B	995	0	0	22	0
6	C	974	0	0	15	0
6	D	897	0	0	13	0
All	All	36820	0	31654	717	0

The all-atom clashscore is defined as the number of clashes found per 1000 atoms (including hydrogen atoms). The all-atom clashscore for this structure is 11.

The worst 5 of 717 close contacts within the same asymmetric unit are listed below, sorted by their clash magnitude.

Atom-1	Atom-2	Interatomic distance (Å)	Clash overlap (Å)
5:D:8403:DMS:S	5:D:8403:DMS:C2	2.08	1.41
1:A:1017:GLN:HE21	1:A:1018:LEU:N	1.46	1.11
1:C:737:ILE:HD12	1:C:738:PRO:HD2	1.16	1.08

Continued on next page...

Continued from previous page...

Atom-1	Atom-2	Interatomic distance (Å)	Clash overlap (Å)
1:D:750:GLU:HG3	1:D:755:ARG:HG3	1.37	1.06
1:A:730:LEU:HD22	1:A:731:PRO:HD2	1.36	1.05

There are no symmetry-related clashes.

5.3 Torsion angles [i](#)

5.3.1 Protein backbone [i](#)

In the following table, the Percentiles column shows the percent Ramachandran outliers of the chain as a percentile score with respect to all X-ray entries followed by that with respect to entries of similar resolution.

The Analysed column shows the number of residues for which the backbone conformation was analysed, and the total number of residues.

Mol	Chain	Analysed	Favoured	Allowed	Outliers	Percentiles
1	A	1009/1023 (99%)	959 (95%)	49 (5%)	1 (0%)	48 34
1	B	1009/1023 (99%)	967 (96%)	35 (4%)	7 (1%)	18 8
1	C	1009/1023 (99%)	973 (96%)	34 (3%)	2 (0%)	43 31
1	D	1009/1023 (99%)	976 (97%)	30 (3%)	3 (0%)	36 25
All	All	4036/4092 (99%)	3875 (96%)	148 (4%)	13 (0%)	36 25

5 of 13 Ramachandran outliers are listed below:

Mol	Chain	Res	Type
1	B	686	PRO
1	B	731	PRO
1	B	735	HIS
1	C	731	PRO
1	D	688	PRO

5.3.2 Protein sidechains [i](#)

In the following table, the Percentiles column shows the percent sidechain outliers of the chain as a percentile score with respect to all X-ray entries followed by that with respect to entries of similar resolution.

The Analysed column shows the number of residues for which the sidechain conformation was analysed, and the total number of residues.

Mol	Chain	Analysed	Rotameric	Outliers	Percentiles	
1	A	864/875 (99%)	815 (94%)	49 (6%)	18	8
1	B	864/875 (99%)	824 (95%)	40 (5%)	24	12
1	C	864/875 (99%)	834 (96%)	30 (4%)	32	19
1	D	864/875 (99%)	820 (95%)	44 (5%)	21	9
All	All	3456/3500 (99%)	3293 (95%)	163 (5%)	23	11

5 of 163 residues with a non-rotameric sidechain are listed below:

Mol	Chain	Res	Type
1	C	800	ARG
1	D	730	LEU
1	D	49	GLN
1	D	299	LYS
1	D	745	MET

Sometimes sidechains can be flipped to improve hydrogen bonding and reduce clashes. 5 of 70 such sidechains are listed below:

Mol	Chain	Res	Type
1	D	628	GLN
1	D	675	GLN
1	D	878	HIS
1	B	624	GLN
1	B	600	GLN

5.3.3 RNA [i](#)

There are no RNA molecules in this entry.

5.4 Non-standard residues in protein, DNA, RNA chains [i](#)

There are no non-standard protein/DNA/RNA residues in this entry.

5.5 Carbohydrates [i](#)

There are no oligosaccharides in this entry.

5.6 Ligand geometry [i](#)

Of 141 ligands modelled in this entry, 32 are monoatomic - leaving 109 for Mogul analysis.

In the following table, the Counts columns list the number of bonds (or angles) for which Mogul statistics could be retrieved, the number of bonds (or angles) that are observed in the model and the number of bonds (or angles) that are defined in the Chemical Component Dictionary. The Link column lists molecule types, if any, to which the group is linked. The Z score for a bond length (or angle) is the number of standard deviations the observed value is removed from the expected value. A bond length (or angle) with $|Z| > 2$ is considered an outlier worth inspection. RMSZ is the root-mean-square of all Z scores of the bond lengths (or angles).

Mol	Type	Chain	Res	Link	Bond lengths			Bond angles		
					Counts	RMSZ	# Z > 2	Counts	RMSZ	# Z > 2
5	DMS	A	8413	-	3,3,3	2.25	1 (33%)	3,3,3	0.31	0
5	DMS	C	8423	-	3,3,3	1.53	0	3,3,3	0.46	0
5	DMS	D	8403	-	3,3,3	2.65	1 (33%)	3,3,3	0.43	0
5	DMS	C	8503	-	3,3,3	1.08	0	3,3,3	0.24	0
5	DMS	C	8504	-	3,3,3	0.69	0	3,3,3	0.25	0
5	DMS	D	8402	-	3,3,3	2.02	1 (33%)	3,3,3	0.30	0
5	DMS	B	8403	-	3,3,3	1.48	1 (33%)	3,3,3	0.78	0
5	DMS	C	8401	-	3,3,3	1.26	0	3,3,3	0.70	0
5	DMS	D	8411	-	3,3,3	1.47	1 (33%)	3,3,3	0.64	0
5	DMS	D	8414	-	3,3,3	0.82	0	3,3,3	0.38	0
4	IPT	C	2003	-	15,15,15	0.69	0	18,21,21	1.37	3 (16%)
5	DMS	A	8411	-	3,3,3	0.80	0	3,3,3	0.20	0
5	DMS	B	8417	-	3,3,3	1.59	1 (33%)	3,3,3	1.82	1 (33%)
4	IPT	C	2004	-	15,15,15	0.44	0	18,21,21	1.66	2 (11%)
5	DMS	C	8405	-	3,3,3	0.85	0	3,3,3	0.19	0
5	DMS	A	8420	-	3,3,3	0.94	0	3,3,3	0.23	0
5	DMS	C	8402	-	3,3,3	1.62	1 (33%)	3,3,3	0.53	0
5	DMS	B	8416	-	3,3,3	0.71	0	3,3,3	0.74	0
5	DMS	A	8501	-	3,3,3	0.89	0	3,3,3	0.31	0
5	DMS	A	8412	-	3,3,3	0.44	0	3,3,3	0.27	0
5	DMS	B	8410	-	3,3,3	1.76	1 (33%)	3,3,3	0.58	0
5	DMS	A	8421	-	3,3,3	0.93	0	3,3,3	0.21	0
5	DMS	D	8408	-	3,3,3	1.06	0	3,3,3	0.51	0
4	IPT	A	2001	3	15,15,15	0.75	0	18,21,21	1.00	0
5	DMS	A	8407	-	3,3,3	1.27	0	3,3,3	0.24	0
5	DMS	A	8401	-	3,3,3	0.61	0	3,3,3	0.19	0
5	DMS	B	8506	-	3,3,3	1.65	1 (33%)	3,3,3	0.42	0
5	DMS	C	8413	-	3,3,3	1.80	1 (33%)	3,3,3	0.16	0
5	DMS	A	8504	-	3,3,3	0.69	0	3,3,3	0.12	0

Mol	Type	Chain	Res	Link	Bond lengths			Bond angles		
					Counts	RMSZ	# Z > 2	Counts	RMSZ	# Z > 2
5	DMS	D	8413	-	3,3,3	1.25	0	3,3,3	0.06	0
5	DMS	C	8420	-	3,3,3	1.06	0	3,3,3	0.20	0
5	DMS	A	8409	-	3,3,3	2.48	2 (66%)	3,3,3	0.27	0
5	DMS	D	8404	-	3,3,3	1.31	0	3,3,3	0.20	0
4	IPT	A	2003	-	15,15,15	0.67	0	18,21,21	2.05	3 (16%)
5	DMS	C	8403	-	3,3,3	1.77	1 (33%)	3,3,3	0.46	0
5	DMS	B	8405	-	3,3,3	1.48	1 (33%)	3,3,3	0.53	0
5	DMS	B	8411	-	3,3,3	0.97	0	3,3,3	0.64	0
5	DMS	B	8502	-	3,3,3	1.35	1 (33%)	3,3,3	1.09	0
5	DMS	B	8402	-	3,3,3	0.85	0	3,3,3	0.36	0
5	DMS	C	8412	-	3,3,3	1.18	0	3,3,3	0.42	0
5	DMS	B	8501	-	3,3,3	1.53	1 (33%)	3,3,3	0.38	0
5	DMS	D	8412	-	3,3,3	1.48	1 (33%)	3,3,3	0.53	0
5	DMS	B	8421	-	3,3,3	0.56	0	3,3,3	0.51	0
5	DMS	D	8501	-	3,3,3	0.15	0	3,3,3	0.56	0
5	DMS	A	8414	-	3,3,3	0.99	0	3,3,3	0.52	0
5	DMS	C	8408	-	3,3,3	0.50	0	3,3,3	1.25	1 (33%)
5	DMS	A	8406	-	3,3,3	0.53	0	3,3,3	0.40	0
5	DMS	B	8401	-	3,3,3	0.85	0	3,3,3	1.30	1 (33%)
5	DMS	D	8407	-	3,3,3	1.50	1 (33%)	3,3,3	0.40	0
5	DMS	D	8705	-	3,3,3	0.77	0	3,3,3	0.51	0
5	DMS	D	8406	-	3,3,3	1.03	0	3,3,3	0.76	0
4	IPT	D	2003	-	15,15,15	0.59	0	18,21,21	1.52	4 (22%)
4	IPT	D	2001	3	15,15,15	0.50	0	18,21,21	1.37	4 (22%)
5	DMS	A	8416	-	3,3,3	0.92	0	3,3,3	0.25	0
5	DMS	B	8425	3	3,3,3	1.12	0	3,3,3	0.20	0
5	DMS	C	8502	-	3,3,3	0.67	0	3,3,3	1.26	1 (33%)
5	DMS	B	8423	-	3,3,3	1.80	1 (33%)	3,3,3	0.54	0
5	DMS	A	8408	-	3,3,3	0.52	0	3,3,3	0.19	0
5	DMS	A	8417	-	3,3,3	1.08	0	3,3,3	0.35	0
5	DMS	A	8423	-	3,3,3	1.71	1 (33%)	3,3,3	0.16	0
4	IPT	B	2001	3	15,15,15	0.76	0	18,21,21	0.93	1 (5%)
5	DMS	B	8504	-	3,3,3	0.44	0	3,3,3	0.19	0
5	DMS	D	8409	-	3,3,3	2.38	1 (33%)	3,3,3	0.89	0
5	DMS	A	8410	-	3,3,3	0.77	0	3,3,3	0.16	0
5	DMS	B	8427	-	3,3,3	0.79	0	3,3,3	0.21	0
4	IPT	A	2002	-	15,15,15	1.07	1 (6%)	18,21,21	1.37	3 (16%)
5	DMS	C	8416	-	3,3,3	0.82	0	3,3,3	0.14	0
5	DMS	B	8413	-	3,3,3	1.22	0	3,3,3	0.60	0

Mol	Type	Chain	Res	Link	Bond lengths			Bond angles		
					Counts	RMSZ	# Z > 2	Counts	RMSZ	# Z > 2
5	DMS	C	8414	-	3,3,3	0.98	0	3,3,3	1.00	0
5	DMS	A	8403	-	3,3,3	1.82	1 (33%)	3,3,3	1.20	1 (33%)
5	DMS	A	8502	-	3,3,3	2.09	1 (33%)	3,3,3	0.66	0
5	DMS	C	8407	-	3,3,3	1.65	1 (33%)	3,3,3	0.54	0
5	DMS	D	8417	-	3,3,3	1.27	0	3,3,3	0.86	0
5	DMS	A	8405	-	3,3,3	0.65	0	3,3,3	0.14	0
5	DMS	A	8415	-	3,3,3	1.44	0	3,3,3	0.59	0
5	DMS	B	8404	-	3,3,3	1.33	1 (33%)	3,3,3	1.30	1 (33%)
5	DMS	D	8421	-	3,3,3	1.23	1 (33%)	3,3,3	0.34	0
5	DMS	D	8416	-	3,3,3	1.20	0	3,3,3	0.09	0
5	DMS	D	8415	-	3,3,3	1.86	1 (33%)	3,3,3	0.33	0
5	DMS	C	8425	3	3,3,3	1.69	1 (33%)	3,3,3	0.16	0
5	DMS	B	8409	-	3,3,3	2.44	1 (33%)	3,3,3	0.49	0
5	DMS	D	8419	-	3,3,3	0.56	0	3,3,3	0.24	0
5	DMS	B	8420	-	3,3,3	2.58	2 (66%)	3,3,3	0.55	0
5	DMS	C	8421	-	3,3,3	0.41	0	3,3,3	0.32	0
5	DMS	A	8402	-	3,3,3	1.73	1 (33%)	3,3,3	0.31	0
5	DMS	A	8404	-	3,3,3	0.66	0	3,3,3	0.57	0
5	DMS	C	8427	-	3,3,3	0.13	0	3,3,3	0.46	0
5	DMS	C	8415	-	3,3,3	1.96	1 (33%)	3,3,3	0.21	0
5	DMS	B	8412	-	3,3,3	0.90	0	3,3,3	0.55	0
5	DMS	A	8419	-	3,3,3	0.61	0	3,3,3	0.34	0
4	IPT	C	2001	3	15,15,15	0.68	0	18,21,21	1.18	2 (11%)
5	DMS	D	8410	-	3,3,3	1.34	0	3,3,3	0.43	0
5	DMS	D	8423	-	3,3,3	0.66	0	3,3,3	0.19	0
5	DMS	B	8407	-	3,3,3	1.91	2 (66%)	3,3,3	0.48	0
4	IPT	D	2002	-	15,15,15	0.94	1 (6%)	18,21,21	1.19	2 (11%)
5	DMS	B	8406	-	3,3,3	0.84	0	3,3,3	0.17	0
5	DMS	C	8404	-	3,3,3	1.53	1 (33%)	3,3,3	1.13	0
5	DMS	D	8503	-	3,3,3	0.85	0	3,3,3	0.18	0
5	DMS	C	8501	-	3,3,3	1.34	1 (33%)	3,3,3	0.96	0
4	IPT	B	2003	-	15,15,15	0.81	0	18,21,21	1.18	1 (5%)
5	DMS	D	8405	-	3,3,3	1.03	0	3,3,3	0.38	0
5	DMS	B	8414	-	3,3,3	1.39	1 (33%)	3,3,3	1.07	0
5	DMS	C	8409	-	3,3,3	1.14	0	3,3,3	0.26	0
4	IPT	B	2004	-	15,15,15	0.65	0	18,21,21	1.66	2 (11%)
5	DMS	D	8401	-	3,3,3	2.33	2 (66%)	3,3,3	0.96	0
5	DMS	B	8415	-	3,3,3	1.73	1 (33%)	3,3,3	0.46	0

Mol	Type	Chain	Res	Link	Bond lengths			Bond angles		
					Counts	RMSZ	# Z > 2	Counts	RMSZ	# Z > 2
5	DMS	C	8410	-	3,3,3	1.87	1 (33%)	3,3,3	0.54	0
5	DMS	B	8408	-	3,3,3	1.36	0	3,3,3	0.39	0
5	DMS	C	8411	-	3,3,3	2.29	2 (66%)	3,3,3	0.21	0

In the following table, the Chirals column lists the number of chiral outliers, the number of chiral centers analysed, the number of these observed in the model and the number defined in the Chemical Component Dictionary. Similar counts are reported in the Torsion and Rings columns. '-' means no outliers of that kind were identified.

Mol	Type	Chain	Res	Link	Chirals	Torsions	Rings
4	IPT	A	2002	-	-	0/6/26/26	0/1/1/1
4	IPT	C	2004	-	-	3/6/26/26	0/1/1/1
4	IPT	B	2001	3	-	1/6/26/26	0/1/1/1
4	IPT	D	2003	-	-	0/6/26/26	0/1/1/1
4	IPT	A	2001	3	-	1/6/26/26	0/1/1/1
4	IPT	A	2003	-	-	0/6/26/26	0/1/1/1
4	IPT	B	2004	-	-	2/6/26/26	0/1/1/1
4	IPT	D	2001	3	-	1/6/26/26	0/1/1/1
4	IPT	C	2003	-	-	1/6/26/26	0/1/1/1
4	IPT	C	2001	3	-	1/6/26/26	0/1/1/1
4	IPT	B	2003	-	-	0/6/26/26	0/1/1/1
4	IPT	D	2002	-	-	0/6/26/26	0/1/1/1

The worst 5 of 46 bond length outliers are listed below:

Mol	Chain	Res	Type	Atoms	Z	Observed(Å)	Ideal(Å)
5	D	8403	DMS	C2-S	4.51	2.08	1.76
5	B	8409	DMS	O-S	3.88	1.75	1.50
5	A	8409	DMS	O-S	3.67	1.74	1.50
5	A	8413	DMS	O-S	3.67	1.74	1.50
5	D	8409	DMS	O-S	3.63	1.74	1.50

The worst 5 of 33 bond angle outliers are listed below:

Mol	Chain	Res	Type	Atoms	Z	Observed(°)	Ideal(°)
4	A	2003	IPT	C3-C4-C5	-6.03	99.31	110.23
4	C	2004	IPT	C4-C3-C2	4.55	118.82	110.83
4	B	2004	IPT	C4-C3-C2	4.37	118.50	110.83
4	D	2003	IPT	C3-C4-C5	-3.80	103.34	110.23
4	C	2003	IPT	C1-O5-C5	-3.30	106.64	112.56

There are no chirality outliers.

5 of 10 torsion outliers are listed below:

Mol	Chain	Res	Type	Atoms
4	C	2003	IPT	C2'-C1'-S1-C1
4	C	2004	IPT	C3'-C1'-S1-C1
4	B	2004	IPT	C4-C5-C6-O6
4	C	2004	IPT	C4-C5-C6-O6
4	C	2004	IPT	O5-C5-C6-O6

There are no ring outliers.

49 monomers are involved in 99 short contacts:

Mol	Chain	Res	Type	Clashes	Symm-Clashes
5	A	8413	DMS	1	0
5	D	8403	DMS	4	0
5	C	8504	DMS	1	0
5	B	8403	DMS	3	0
5	D	8414	DMS	2	0
5	A	8411	DMS	1	0
5	B	8417	DMS	1	0
4	C	2004	IPT	2	0
5	A	8420	DMS	3	0
5	C	8402	DMS	1	0
5	B	8416	DMS	3	0
5	A	8501	DMS	1	0
5	A	8412	DMS	3	0
5	B	8506	DMS	8	0
5	C	8413	DMS	1	0
5	C	8420	DMS	2	0
5	C	8403	DMS	2	0
5	C	8412	DMS	4	0
5	D	8412	DMS	2	0
5	A	8414	DMS	4	0
5	C	8408	DMS	3	0
5	D	8407	DMS	1	0
4	D	2003	IPT	1	0
5	A	8416	DMS	2	0
5	C	8502	DMS	1	0
5	A	8417	DMS	1	0
5	A	8423	DMS	1	0
4	B	2001	IPT	3	0
5	B	8504	DMS	6	0
5	A	8410	DMS	1	0

Continued on next page...

Continued from previous page...

Mol	Chain	Res	Type	Clashes	Symm-Clashes
5	B	8427	DMS	1	0
5	C	8416	DMS	3	0
5	B	8413	DMS	1	0
5	A	8403	DMS	2	0
5	D	8417	DMS	2	0
5	A	8415	DMS	1	0
5	D	8415	DMS	2	0
5	C	8421	DMS	1	0
5	C	8427	DMS	1	0
5	C	8415	DMS	1	0
5	B	8412	DMS	4	0
5	D	8410	DMS	1	0
5	D	8423	DMS	1	0
5	B	8407	DMS	1	0
5	C	8404	DMS	1	0
5	D	8503	DMS	1	0
5	C	8501	DMS	3	0
4	B	2004	IPT	1	0
5	C	8411	DMS	5	0

5.7 Other polymers [i](#)

There are no such residues in this entry.

5.8 Polymer linkage issues [i](#)

There are no chain breaks in this entry.

6 Fit of model and data [i](#)

6.1 Protein, DNA and RNA chains [i](#)

In the following table, the column labelled ‘#RSRZ> 2’ contains the number (and percentage) of RSRZ outliers, followed by percent RSRZ outliers for the chain as percentile scores relative to all X-ray entries and entries of similar resolution. The OWAB column contains the minimum, median, 95th percentile and maximum values of the occupancy-weighted average B-factor per residue. The column labelled ‘Q< 0.9’ lists the number of (and percentage) of residues with an average occupancy less than 0.9.

Mol	Chain	Analysed	<RSRZ>	#RSRZ>2	OWAB(Å ²)	Q<0.9
1	A	1011/1023 (98%)	-0.16	31 (3%) 51 51	11, 22, 52, 99	0
1	B	1011/1023 (98%)	-0.41	25 (2%) 58 58	10, 19, 49, 100	0
1	C	1011/1023 (98%)	-0.50	22 (2%) 62 62	11, 18, 46, 99	0
1	D	1011/1023 (98%)	-0.22	23 (2%) 61 61	13, 23, 51, 99	0
All	All	4044/4092 (98%)	-0.33	101 (2%) 58 58	10, 20, 50, 100	0

The worst 5 of 101 RSRZ outliers are listed below:

Mol	Chain	Res	Type	RSRZ
1	B	732	ALA	5.2
1	B	686	PRO	5.0
1	C	732	ALA	4.8
1	A	732	ALA	4.5
1	C	733	ALA	4.5

6.2 Non-standard residues in protein, DNA, RNA chains [i](#)

There are no non-standard protein/DNA/RNA residues in this entry.

6.3 Carbohydrates [i](#)

There are no oligosaccharides in this entry.

6.4 Ligands [i](#)

In the following table, the Atoms column lists the number of modelled atoms in the group and the number defined in the chemical component dictionary. The B-factors column lists the minimum, median, 95th percentile and maximum values of B factors of atoms in the group. The column labelled ‘Q< 0.9’ lists the number of atoms with occupancy less than 0.9.

Mol	Type	Chain	Res	Atoms	RSCC	RSR	B-factors(\AA^2)	Q<0.9
5	DMS	B	8420	4/4	0.78	0.26	56,57,69,82	0
5	DMS	B	8417	4/4	0.79	0.21	28,29,73,100	0
5	DMS	B	8416	4/4	0.79	0.26	21,75,100,100	0
5	DMS	A	8421	4/4	0.80	0.19	28,62,80,100	0
5	DMS	C	8416	4/4	0.82	0.21	22,78,100,100	0
5	DMS	A	8423	4/4	0.83	0.24	58,63,65,100	0
5	DMS	D	8416	4/4	0.84	0.19	36,61,87,100	0
5	DMS	D	8421	4/4	0.84	0.16	47,55,65,100	0
5	DMS	D	8423	4/4	0.84	0.18	49,50,66,96	0
5	DMS	D	8705	4/4	0.84	0.20	38,47,100,100	0
5	DMS	D	8406	4/4	0.85	0.24	36,57,85,100	0
4	IPT	C	2004	15/15	0.86	0.17	29,55,100,100	0
3	NA	C	3105	1/1	0.87	0.13	48,48,48,48	0
5	DMS	D	8417	4/4	0.88	0.17	30,35,64,98	0
3	NA	D	3105	1/1	0.88	0.16	64,64,64,64	0
2	MG	A	3003	1/1	0.89	0.10	52,52,52,52	0
5	DMS	B	8427	4/4	0.89	0.17	41,68,100,100	0
5	DMS	A	8416	4/4	0.89	0.22	43,44,100,100	0
5	DMS	A	8414	4/4	0.90	0.16	38,40,91,100	0
5	DMS	B	8506	4/4	0.90	0.23	44,50,100,100	0
5	DMS	A	8502	4/4	0.90	0.17	36,41,54,100	0
5	DMS	C	8421	4/4	0.90	0.12	38,46,62,68	0
5	DMS	C	8427	4/4	0.90	0.11	38,49,72,73	0
5	DMS	C	8503	4/4	0.90	0.15	38,47,52,55	0
5	DMS	C	8504	4/4	0.90	0.18	37,66,69,100	0
5	DMS	A	8504	4/4	0.90	0.16	58,65,69,89	0
5	DMS	B	8415	4/4	0.90	0.17	28,32,48,100	0
4	IPT	B	2004	15/15	0.90	0.13	31,45,99,100	0
5	DMS	A	8420	4/4	0.90	0.17	45,55,55,65	0
5	DMS	A	8403	4/4	0.90	0.20	24,26,36,100	0
5	DMS	B	8423	4/4	0.90	0.19	35,58,73,80	0
5	DMS	D	8414	4/4	0.91	0.21	30,61,100,100	0
5	DMS	A	8417	4/4	0.91	0.13	30,36,38,100	0
5	DMS	A	8419	4/4	0.91	0.20	38,62,71,100	0
5	DMS	B	8421	4/4	0.91	0.17	36,47,100,100	0
3	NA	B	3105	1/1	0.91	0.12	48,48,48,48	0
5	DMS	D	8413	4/4	0.91	0.12	39,40,52,56	0
5	DMS	C	8423	4/4	0.92	0.16	27,40,47,77	0
5	DMS	D	8419	4/4	0.92	0.17	55,62,64,72	0
5	DMS	A	8410	4/4	0.92	0.12	40,45,58,61	0
5	DMS	C	8420	4/4	0.92	0.18	47,52,67,79	0
5	DMS	D	8503	4/4	0.92	0.16	25,47,53,100	0
5	DMS	B	8403	4/4	0.92	0.18	26,33,38,100	0

Continued on next page...

Continued from previous page...

Mol	Type	Chain	Res	Atoms	RSCC	RSR	B-factors(Å ²)	Q<0.9
5	DMS	C	8414	4/4	0.93	0.14	23,41,47,52	0
5	DMS	B	8504	4/4	0.93	0.13	53,54,60,65	0
5	DMS	A	8413	4/4	0.93	0.12	44,46,52,52	0
5	DMS	D	8501	4/4	0.93	0.14	31,37,48,74	0
5	DMS	C	8403	4/4	0.93	0.18	23,33,36,100	0
5	DMS	D	8403	4/4	0.93	0.12	28,33,42,42	0
5	DMS	C	8413	4/4	0.94	0.15	28,48,50,100	0
5	DMS	D	8409	4/4	0.94	0.10	28,31,34,46	0
5	DMS	A	8409	4/4	0.94	0.12	38,39,50,66	0
5	DMS	B	8404	4/4	0.94	0.08	19,20,32,38	0
5	DMS	B	8413	4/4	0.94	0.12	32,42,44,69	0
5	DMS	B	8425	4/4	0.94	0.14	41,42,43,50	0
5	DMS	B	8414	4/4	0.94	0.15	24,42,50,100	0
5	DMS	A	8501	4/4	0.94	0.11	36,53,54,57	0
5	DMS	C	8501	4/4	0.94	0.11	25,48,53,60	0
4	IPT	D	2003	15/15	0.94	0.10	28,36,55,63	0
4	IPT	A	2003	15/15	0.94	0.12	26,35,77,100	0
5	DMS	C	8410	4/4	0.94	0.13	17,33,39,100	0
5	DMS	D	8408	4/4	0.95	0.09	26,34,43,47	0
5	DMS	B	8502	4/4	0.95	0.09	19,29,62,68	0
5	DMS	D	8410	4/4	0.95	0.11	32,41,45,71	0
5	DMS	A	8408	4/4	0.95	0.09	31,37,48,82	0
3	NA	B	3103	1/1	0.95	0.07	31,31,31,31	0
5	DMS	D	8415	4/4	0.95	0.09	26,30,37,48	0
5	DMS	C	8425	4/4	0.95	0.14	34,36,52,57	0
5	DMS	B	8406	4/4	0.95	0.13	35,36,44,100	0
5	DMS	C	8409	4/4	0.95	0.11	33,38,43,51	0
5	DMS	B	8407	4/4	0.95	0.11	25,39,43,50	0
5	DMS	A	8404	4/4	0.95	0.09	24,33,36,44	0
5	DMS	A	8412	4/4	0.95	0.10	36,51,51,65	0
5	DMS	A	8407	4/4	0.95	0.10	32,34,40,47	0
5	DMS	D	8407	4/4	0.95	0.10	25,34,40,44	0
5	DMS	C	8402	4/4	0.96	0.11	20,21,32,34	0
5	DMS	A	8406	4/4	0.96	0.10	28,51,52,61	0
5	DMS	C	8404	4/4	0.96	0.10	20,23,40,53	0
5	DMS	C	8407	4/4	0.96	0.10	28,28,36,43	0
5	DMS	C	8408	4/4	0.96	0.12	31,35,41,100	0
5	DMS	A	8415	4/4	0.96	0.11	27,31,48,49	0
4	IPT	B	2003	15/15	0.96	0.07	23,30,38,42	0
5	DMS	C	8412	4/4	0.96	0.11	31,35,37,54	0
5	DMS	D	8412	4/4	0.96	0.10	30,39,46,62	0
4	IPT	C	2003	15/15	0.96	0.09	18,28,47,67	0

Continued on next page...

Continued from previous page...

Mol	Type	Chain	Res	Atoms	RSCC	RSR	B-factors(\AA^2)	Q<0.9
3	NA	D	3103	1/1	0.96	0.08	31,31,31,31	0
5	DMS	C	8415	4/4	0.96	0.10	21,26,37,46	0
2	MG	A	3012	1/1	0.96	0.07	40,40,40,40	0
2	MG	D	3003	1/1	0.96	0.07	48,48,48,48	0
5	DMS	B	8408	4/4	0.96	0.10	39,42,42,56	0
5	DMS	B	8409	4/4	0.96	0.08	24,34,36,41	0
5	DMS	B	8410	4/4	0.96	0.09	22,35,44,48	0
5	DMS	B	8412	4/4	0.96	0.11	34,35,39,57	0
3	NA	A	3105	1/1	0.96	0.07	46,46,46,46	0
5	DMS	C	8502	4/4	0.96	0.08	28,29,41,44	0
3	NA	B	3104	1/1	0.97	0.07	29,29,29,29	0
4	IPT	B	2001	15/15	0.97	0.07	16,20,28,33	0
5	DMS	D	8411	4/4	0.97	0.13	27,35,38,100	0
2	MG	B	3011	1/1	0.97	0.06	41,41,41,41	0
4	IPT	A	2001	15/15	0.97	0.07	17,25,58,60	0
5	DMS	B	8402	4/4	0.97	0.07	19,20,32,36	0
4	IPT	A	2002	15/15	0.97	0.07	15,22,30,34	0
2	MG	A	3002	1/1	0.97	0.06	23,23,23,23	0
5	DMS	D	8402	4/4	0.97	0.10	12,25,29,42	0
5	DMS	B	8405	4/4	0.97	0.09	28,32,33,38	0
5	DMS	D	8404	4/4	0.97	0.08	18,30,34,35	0
5	DMS	D	8405	4/4	0.97	0.09	33,33,39,39	0
4	IPT	D	2001	15/15	0.97	0.07	20,30,34,52	0
4	IPT	D	2002	15/15	0.97	0.07	13,22,31,32	0
5	DMS	C	8405	4/4	0.97	0.08	28,29,32,33	0
3	NA	A	3103	1/1	0.98	0.06	33,33,33,33	0
5	DMS	D	8401	4/4	0.98	0.06	14,22,23,26	0
2	MG	D	3002	1/1	0.98	0.06	27,27,27,27	0
3	NA	C	3104	1/1	0.98	0.10	26,26,26,26	0
5	DMS	B	8411	4/4	0.98	0.10	23,27,36,47	0
2	MG	C	3003	1/1	0.98	0.03	15,15,15,15	1
5	DMS	A	8411	4/4	0.98	0.08	28,29,36,43	0
5	DMS	B	8501	4/4	0.98	0.06	21,24,32,32	0
4	IPT	C	2001	15/15	0.98	0.05	14,19,31,37	0
5	DMS	C	8411	4/4	0.98	0.06	21,23,23,27	0
5	DMS	A	8405	4/4	0.98	0.07	33,34,34,35	0
3	NA	D	3102	1/1	0.98	0.05	17,17,17,17	0
2	MG	C	3001	1/1	0.99	0.05	15,15,15,15	0
5	DMS	A	8401	4/4	0.99	0.04	15,24,25,26	0
5	DMS	A	8402	4/4	0.99	0.07	18,25,26,31	0
3	NA	B	3101	1/1	0.99	0.04	17,17,17,17	0
5	DMS	C	8401	4/4	0.99	0.05	15,15,21,22	0

Continued on next page...

Continued from previous page...

Mol	Type	Chain	Res	Atoms	RSCC	RSR	B-factors(\AA^2)	Q<0.9
3	NA	B	3102	1/1	0.99	0.04	15,15,15,15	0
2	MG	C	3002	1/1	0.99	0.04	18,18,18,18	0
2	MG	B	3001	1/1	0.99	0.03	16,16,16,16	0
2	MG	D	3001	1/1	0.99	0.03	18,18,18,18	0
3	NA	C	3101	1/1	0.99	0.02	15,15,15,15	0
3	NA	C	3102	1/1	0.99	0.03	16,16,16,16	0
5	DMS	B	8401	4/4	0.99	0.05	16,22,22,24	0
3	NA	C	3103	1/1	0.99	0.04	30,30,30,30	0
2	MG	B	3002	1/1	0.99	0.05	19,19,19,19	0
2	MG	B	3007	1/1	0.99	0.07	26,26,26,26	0
3	NA	D	3101	1/1	0.99	0.04	19,19,19,19	0
2	MG	A	3001	1/1	0.99	0.04	17,17,17,17	0
3	NA	A	3102	1/1	1.00	0.03	15,15,15,15	0
3	NA	A	3101	1/1	1.00	0.06	21,21,21,21	0

6.5 Other polymers [i](#)

There are no such residues in this entry.