



Full wwPDB X-ray Structure Validation Report ⓘ

Mar 12, 2026 – 12:07 PM UTC

PDB ID : 4E0D / pdb_00004e0d
Title : Binary complex of Bacillus DNA Polymerase I Large Fragment E658A and duplex DNA
Authors : Wang, W.; Beese, L.S.
Deposited on : 2012-03-02
Resolution : 1.58 Å(reported)

This is a Full wwPDB X-ray Structure Validation Report for a publicly released PDB entry.

We welcome your comments at validation@mail.wwpdb.org

A user guide is available at

<https://www.wwpdb.org/validation/2017/XrayValidationReportHelp>

with specific help available everywhere you see the ⓘ symbol.

The types of validation reports are described at

<http://www.wwpdb.org/validation/2017/FAQs#types>.

The following versions of software and data (see [references ⓘ](#)) were used in the production of this report:

MolProbity : 4-5-2 with Phenix2.0
Mogul : 2022.3.0, CSD as543be (2022)
Xtrriage (Phenix) : 2.0
EDS : 3.0
Buster-report : wwPDB partial adaption of 1.1.7 (2018)
Percentile statistics : 20250101.v01 (using entries in the PDB archive January 1st 2025)
CCP4 : 9.0.010 (Gargrove)
Density-Fitness : 1.0.12
Ideal geometry (proteins) : Engh & Huber (2001)
Ideal geometry (DNA, RNA) : Parkinson et al. (1996)
Validation Pipeline (wwPDB-VP) : 2.49

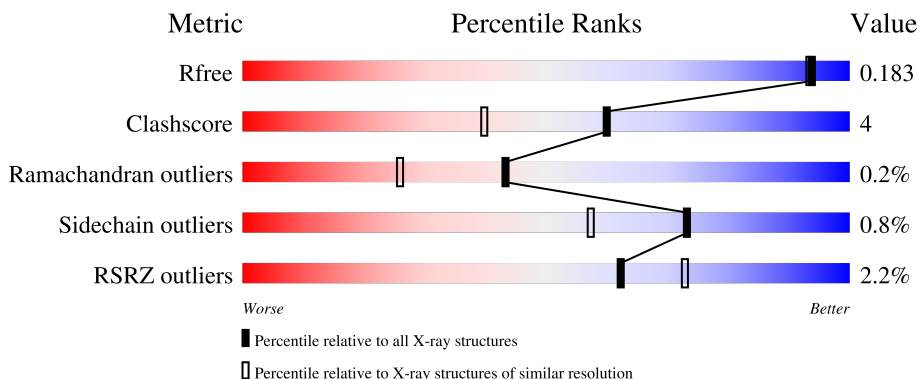
1 Overall quality at a glance

The following experimental techniques were used to determine the structure:

X-RAY DIFFRACTION

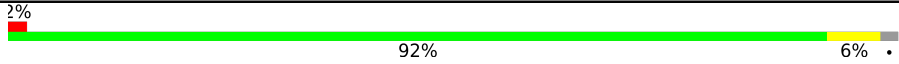


The reported resolution of this entry is 1.58 Å.

Percentile scores (ranging between 0-100) for global validation metrics of the entry are shown in the following graphic. The table shows the number of entries on which the scores are based.



Metric	Whole archive (#Entries)	Similar resolution (#Entries, resolution range(Å))
R_{free}	180053	1094 (1.58-1.58)
Clashscore	190562	1105 (1.58-1.58)
Ramachandran outliers	187476	1082 (1.58-1.58)
Sidechain outliers	187428	1081 (1.58-1.58)
RSRZ outliers	180081	1094 (1.58-1.58)

The table below summarises the geometric issues observed across the polymeric chains and their fit to the electron density. The red, orange, yellow and green segments of the lower bar indicate the fraction of residues that contain outliers for ≥ 3 , 2, 1 and 0 types of geometric quality criteria respectively. A grey segment represents the fraction of residues that are not modelled. The numeric value for each fraction is indicated below the corresponding segment, with a dot representing fractions $\leq 5\%$. The upper red bar (where present) indicates the fraction of residues that have poor fit to the electron density. The numeric value is given above the bar.

Mol	Chain	Length	Quality of chain
1	A	592	
2	B	9	
3	C	13	

The following table lists non-polymeric compounds, carbohydrate monomers and non-standard residues in protein, DNA, RNA chains that are outliers for geometric or electron-density-fit criteria:

Mol	Type	Chain	Res	Chirality	Geometry	Clashes	Electron density
4	SO4	A	904	-	-	X	-

2 Entry composition [i](#)

There are 8 unique types of molecules in this entry. The entry contains 11043 atoms, of which 5068 are hydrogens and 0 are deuteriums.

In the tables below, the ZeroOcc column contains the number of atoms modelled with zero occupancy, the AltConf column contains the number of residues with at least one atom in alternate conformation and the Trace column contains the number of residues modelled with at most 2 atoms.

- Molecule 1 is a protein called DNA polymerase.

Mol	Chain	Residues	Atoms						ZeroOcc	AltConf	Trace
			Total	C	H	N	O	S			
1	A	580	9498	2994	4801	810	873	20	78	14	0

There are 3 discrepancies between the modelled and reference sequences:

Chain	Residue	Modelled	Actual	Comment	Reference
A	598	ALA	ASP	engineered mutation	UNP Q5KWC1
A	658	ALA	GLU	engineered mutation	UNP Q5KWC1
A	823	HIS	ARG	SEE REMARK 999	UNP Q5KWC1

- Molecule 2 is a DNA chain called DNA (5'-D(*CP*CP*TP*GP*AP*CP*TP*CP*(DOC))-3').

Mol	Chain	Residues	Atoms						ZeroOcc	AltConf	Trace
			Total	C	H	N	O	P			
2	B	9	274	85	100	29	52	8	13	0	0

- Molecule 3 is a DNA chain called DNA (5'-D(*CP*AP*TP*GP*GP*GP*AP*GP*TP*CP*AP*GP*G)-3').

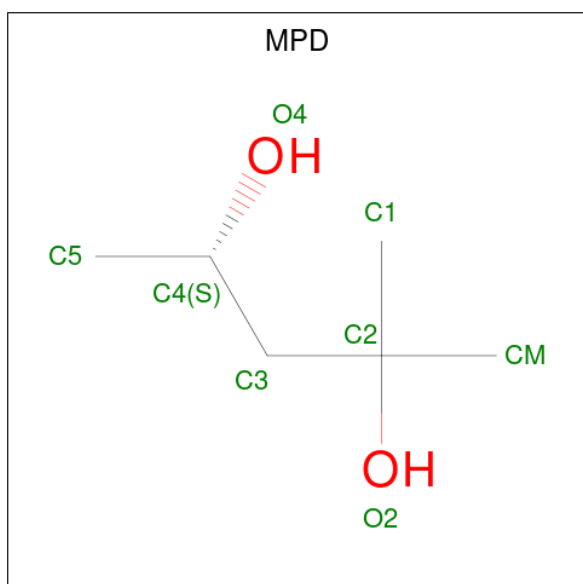
Mol	Chain	Residues	Atoms						ZeroOcc	AltConf	Trace
			Total	C	H	N	O	P			
3	C	9	291	89	100	40	53	9	7	0	0

- Molecule 4 is SULFATE ION (CCD ID: SO4) (formula: O₄S).



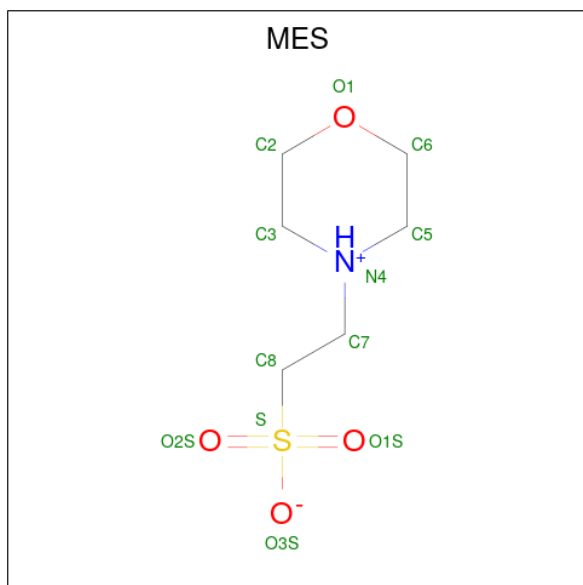
Mol	Chain	Residues	Atoms	ZeroOcc	AltConf
4	A	1	Total O S 5 4 1	0	0
4	A	1	Total O S 5 4 1	0	0
4	A	1	Total O S 5 4 1	0	0
4	A	1	Total O S 5 4 1	0	0
4	A	1	Total O S 5 4 1	0	0

- Molecule 5 is (4S)-2-METHYL-2,4-PENTANEDIOL (CCD ID: MPD) (formula: C₆H₁₄O₂).



Mol	Chain	Residues	Atoms				ZeroOcc	AltConf
5	A	1	Total	C	H	O	2	0
			22	6	14	2		
5	A	1	Total	C	H	O	4	0
			22	6	14	2		
5	A	1	Total	C	H	O	4	0
			22	6	14	2		

- Molecule 6 is 2-(N-MORPHOLINO)-ETHANESULFONIC ACID (CCD ID: MES) (formula: $C_6H_{13}NO_4S$).



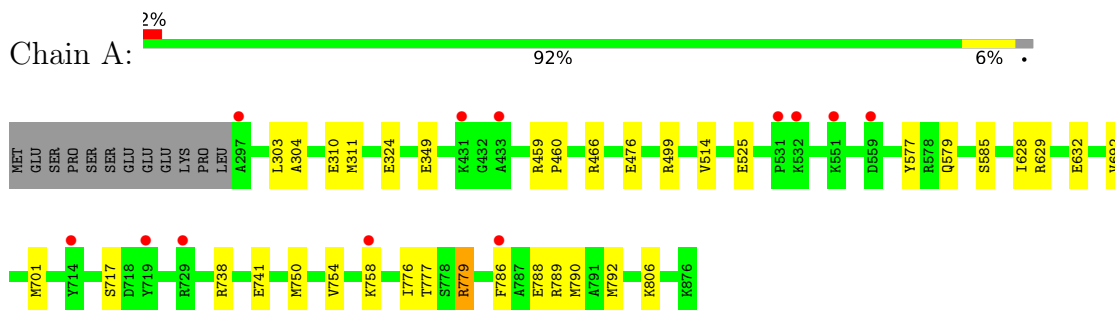
Mol	Chain	Residues	Atoms					ZeroOcc	AltConf	
6	A	1	Total	C	H	N	O	S	0	0
			25	6	13	1	4	1		

- Molecule 7 is 2'-DEOXYCYTIDINE-5'-TRIPHOSPHATE (CCD ID: DCP) (formula: $C_9H_{16}N_3O_{13}P_3$).

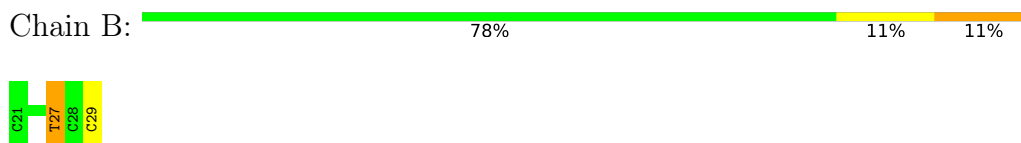
3 Residue-property plots [i](#)

These plots are drawn for all protein, RNA, DNA and oligosaccharide chains in the entry. The first graphic for a chain summarises the proportions of the various outlier classes displayed in the second graphic. The second graphic shows the sequence view annotated by issues in geometry and electron density. Residues are color-coded according to the number of geometric quality criteria for which they contain at least one outlier: green = 0, yellow = 1, orange = 2 and red = 3 or more. A red dot above a residue indicates a poor fit to the electron density ($RSRZ > 2$). Stretches of 2 or more consecutive residues without any outlier are shown as a green connector. Residues present in the sample, but not in the model, are shown in grey.

- Molecule 1: DNA polymerase



- Molecule 2: DNA (5'-D(*CP*CP*TP*GP*AP*CP*TP*CP*(DOC))-3')



- Molecule 3: DNA (5'-D(*CP*AP*TP*GP*GP*GP*AP*GP*TP*CP*AP*GP*G)-3')



4 Data and refinement statistics

Property	Value	Source
Space group	P 21 21 21	Depositor
Cell constants a, b, c, α , β , γ	87.86Å 93.78Å 104.87Å 90.00° 90.00° 90.00°	Depositor
Resolution (Å)	54.70 – 1.58 54.70 – 1.58	Depositor EDS
% Data completeness (in resolution range)	94.9 (54.70-1.58) 94.9 (54.70-1.58)	Depositor EDS
R_{merge}	0.06	Depositor
R_{sym}	(Not available)	Depositor
$\langle I/\sigma(I) \rangle$ ¹	2.58 (at 1.58Å)	Xtrriage
Refinement program	PHENIX dev_1026	Depositor
R, R_{free}	0.161 , 0.181 (Not available) , 0.183	Depositor DCC
R_{free} test set	5646 reflections (5.00%)	wwPDB-VP
Wilson B-factor (Å ²)	17.4	Xtrriage
Anisotropy	0.291	Xtrriage
Bulk solvent k_{sol} (e/Å ³), B_{sol} (Å ²)	0.41 , 46.7	EDS
L-test for twinning ²	$\langle L \rangle = 0.48$, $\langle L^2 \rangle = 0.32$	Xtrriage
Estimated twinning fraction	No twinning to report.	Xtrriage
F_o, F_c correlation	0.97	EDS
Total number of atoms	11043	wwPDB-VP
Average B, all atoms (Å ²)	26.0	wwPDB-VP

Xtrriage's analysis on translational NCS is as follows: *The largest off-origin peak in the Patterson function is 4.75% of the height of the origin peak. No significant pseudotranslation is detected.*

¹Intensities estimated from amplitudes.

²Theoretical values of $\langle |L| \rangle$, $\langle L^2 \rangle$ for acentric reflections are 0.5, 0.333 respectively for untwinned datasets, and 0.375, 0.2 for perfectly twinned datasets.

5 Model quality [i](#)

5.1 Standard geometry [i](#)

Bond lengths and bond angles in the following residue types are not validated in this section: MES, MPD, DOC, DCP, SO4

The Z score for a bond length (or angle) is the number of standard deviations the observed value is removed from the expected value. A bond length (or angle) with $|Z| > 5$ is considered an outlier worth inspection. RMSZ is the root-mean-square of all Z scores of the bond lengths (or angles).

Mol	Chain	Bond lengths		Bond angles	
		RMSZ	# Z >5	RMSZ	# Z >5
1	A	0.58	0/4821	0.73	0/6514
2	B	0.55	0/173	1.47	4/264 (1.5%)
3	C	0.54	0/215	1.18	0/331
All	All	0.58	0/5209	0.79	4/7109 (0.1%)

There are no bond length outliers.

All (4) bond angle outliers are listed below:

Mol	Chain	Res	Type	Atoms	Z	Observed(°)	Ideal(°)
2	B	27	DT	P-O5'-C5'	9.85	134.78	120.00
2	B	27	DT	C5'-C4'-C3'	8.71	127.96	114.90
2	B	27	DT	C4'-C3'-C2'	-5.14	94.69	102.40
2	B	27	DT	O4'-C4'-C3'	-5.11	97.74	105.40

There are no chirality outliers.

There are no planarity outliers.

5.2 Too-close contacts [i](#)

In the following table, the Non-H and H(model) columns list the number of non-hydrogen atoms and hydrogen atoms in the chain respectively. The H(added) column lists the number of hydrogen atoms added and optimized by MolProbity. The Clashes column lists the number of clashes within the asymmetric unit, whereas Symm-Clashes lists symmetry-related clashes.

Mol	Chain	Non-H	H(model)	H(added)	Clashes	Symm-Clashes
1	A	4697	4801	4785	33	0
2	B	174	100	103	3	0
3	C	191	100	101	7	0
4	A	25	0	0	3	0

Continued on next page...

Continued from previous page...

Mol	Chain	Non-H	H(model)	H(added)	Clashes	Symm-Clashes
5	A	24	42	42	3	0
6	A	12	13	13	0	0
7	A	28	12	12	2	0
8	A	742	0	0	19	1
8	B	35	0	0	2	0
8	C	47	0	0	6	0
All	All	5975	5068	5056	44	1

The all-atom clashscore is defined as the number of clashes found per 1000 atoms (including hydrogen atoms). The all-atom clashscore for this structure is 4.

All (44) close contacts within the same asymmetric unit are listed below, sorted by their clash magnitude.

Atom-1	Atom-2	Interatomic distance (Å)	Clash overlap (Å)
1:A:790[B]:MET:SD	8:A:1483:HOH:O	2.16	1.01
1:A:579:GLN:NE2	8:A:1656:HOH:O	2.02	0.91
1:A:779:ARG:NH1	4:A:904:SO4:O4	2.12	0.83
2:B:27:DT:H5''	8:B:125:HOH:O	1.80	0.81
3:C:5:DG:O4'	8:C:146:HOH:O	2.03	0.75
1:A:310:GLU:OE1	8:A:1738:HOH:O	2.05	0.73
3:C:5:DG:C4	8:C:146:HOH:O	2.42	0.72
1:A:629:ARG:NH2	2:B:29:DOC:H5	2.07	0.70
4:A:903:SO4:O4	8:A:1657:HOH:O	2.08	0.69
1:A:790[B]:MET:SD	3:C:5:DG:OP1	2.53	0.67
3:C:5:DG:C1'	8:C:146:HOH:O	2.43	0.66
1:A:579:GLN:CD	8:A:1656:HOH:O	2.38	0.63
1:A:629:ARG:NH1	8:A:1228:HOH:O	2.32	0.63
1:A:750[B]:MET:HB3	8:A:1723:HOH:O	1.99	0.62
1:A:750[A]:MET:HB3	8:A:1723:HOH:O	2.00	0.61
1:A:750[A]:MET:SD	1:A:792:MET:HB3	2.41	0.60
1:A:499:ARG:NH1	8:A:1693:HOH:O	2.35	0.60
1:A:779:ARG:NH1	4:A:904:SO4:S	2.75	0.58
1:A:585[A]:SER:OG	8:A:1123:HOH:O	2.16	0.57
1:A:476:GLU:OE2	5:A:906:MPD:HM3	2.03	0.57
1:A:577:TYR:OH	8:A:1660:HOH:O	2.15	0.57
2:B:27:DT:C5'	8:B:125:HOH:O	2.48	0.55
1:A:632:GLU:HB2	8:A:1641:HOH:O	2.08	0.53
1:A:806:LYS:HD2	5:A:906:MPD:H4	1.91	0.52
1:A:459:ARG:HB3	1:A:460:PRO:HD3	1.92	0.51
1:A:324:GLU:CG	8:A:1659:HOH:O	2.59	0.51
3:C:5:DG:N3	8:C:146:HOH:O	2.41	0.50

Continued on next page...

Continued from previous page...

Atom-1	Atom-2	Interatomic distance (Å)	Clash overlap (Å)
1:A:324:GLU:HG3	8:A:1659:HOH:O	2.12	0.50
1:A:466:ARG:HD2	8:A:1513:HOH:O	2.12	0.49
1:A:754:VAL:HG12	1:A:758:LYS:HE2	1.94	0.48
1:A:525:GLU:OE1	8:A:1644:HOH:O	2.20	0.47
1:A:692:VAL:HG21	1:A:701:MET:HE1	1.96	0.46
3:C:5:DG:N9	8:C:146:HOH:O	2.41	0.45
1:A:738:ARG:NH1	1:A:741:GLU:HB2	2.32	0.45
1:A:717:SER:HB3	1:A:789:ARG:CZ	2.47	0.43
5:A:906:MPD:H32	7:A:910:DCP:O3'	2.18	0.43
1:A:579:GLN:HG3	8:A:1656:HOH:O	2.18	0.43
1:A:304:ALA:CB	1:A:311:MET:HE1	2.50	0.42
1:A:786:PHE:CE1	1:A:790[A]:MET:HE3	2.55	0.42
7:A:910:DCP:O3G	7:A:910:DCP:O3A	2.38	0.42
1:A:514[A]:VAL:HG23	8:A:1538:HOH:O	2.20	0.41
1:A:777:THR:HB	8:A:1302:HOH:O	2.20	0.41
3:C:10:DA:N7	8:C:147:HOH:O	2.37	0.41
1:A:788:GLU:O	1:A:792:MET:HG3	2.21	0.40

All (1) symmetry-related close contacts are listed below. The label for Atom-2 includes the symmetry operator and encoded unit-cell translations to be applied.

Atom-1	Atom-2	Interatomic distance (Å)	Clash overlap (Å)
8:A:1167:HOH:O	8:A:1451:HOH:O[3_545]	1.74	0.46

5.3 Torsion angles [i](#)

5.3.1 Protein backbone [i](#)

In the following table, the Percentiles column shows the percent Ramachandran outliers of the chain as a percentile score with respect to all X-ray entries followed by that with respect to entries of similar resolution.

The Analysed column shows the number of residues for which the backbone conformation was analysed, and the total number of residues.

Mol	Chain	Analysed	Favoured	Allowed	Outliers	Percentiles
1	A	592/592 (100%)	578 (98%)	13 (2%)	1 (0%)	43 26

All (1) Ramachandran outliers are listed below:

Mol	Chain	Res	Type
1	A	628	ILE

5.3.2 Protein sidechains [i](#)

In the following table, the Percentiles column shows the percent sidechain outliers of the chain as a percentile score with respect to all X-ray entries followed by that with respect to entries of similar resolution.

The Analysed column shows the number of residues for which the sidechain conformation was analysed, and the total number of residues.

Mol	Chain	Analysed	Rotameric	Outliers	Percentiles
1	A	505/506 (100%)	501 (99%)	4 (1%)	73 57

All (4) residues with a non-rotameric sidechain are listed below:

Mol	Chain	Res	Type
1	A	303	LEU
1	A	349	GLU
1	A	776	ILE
1	A	779	ARG

Sometimes sidechains can be flipped to improve hydrogen bonding and reduce clashes. All (2) such sidechains are listed below:

Mol	Chain	Res	Type
1	A	468	ASN
1	A	470	GLN

5.3.3 RNA [i](#)

There are no RNA molecules in this entry.

5.4 Non-standard residues in protein, DNA, RNA chains [i](#)

1 non-standard protein/DNA/RNA residue is modelled in this entry.

In the following table, the Counts columns list the number of bonds (or angles) for which Mogul statistics could be retrieved, the number of bonds (or angles) that are observed in the model and the number of bonds (or angles) that are defined in the Chemical Component Dictionary. The Link column lists molecule types, if any, to which the group is linked. The Z score for a bond length (or angle) is the number of standard deviations the observed value is removed from the

expected value. A bond length (or angle) with $|Z| > 2$ is considered an outlier worth inspection. RMSZ is the root-mean-square of all Z scores of the bond lengths (or angles).

Mol	Type	Chain	Res	Link	Bond lengths			Bond angles		
					Counts	RMSZ	$\# Z > 2$	Counts	RMSZ	$\# Z > 2$
2	DOC	B	29	2,3	16,19,20	0.72	0	20,26,29	0.89	0

In the following table, the Chirals column lists the number of chiral outliers, the number of chiral centers analysed, the number of these observed in the model and the number defined in the Chemical Component Dictionary. Similar counts are reported in the Torsion and Rings columns. '-' means no outliers of that kind were identified.

Mol	Type	Chain	Res	Link	Chirals	Torsions	Rings
2	DOC	B	29	2,3	-	0/7/18/19	0/2/2/2

There are no bond length outliers.

There are no bond angle outliers.

There are no chirality outliers.

There are no torsion outliers.

There are no ring outliers.

1 monomer is involved in 1 short contact:

Mol	Chain	Res	Type	Clashes	Symm-Clashes
2	B	29	DOC	1	0

5.5 Carbohydrates [i](#)

There are no oligosaccharides in this entry.

5.6 Ligand geometry [i](#)

10 ligands are modelled in this entry.

In the following table, the Counts columns list the number of bonds (or angles) for which Mogul statistics could be retrieved, the number of bonds (or angles) that are observed in the model and the number of bonds (or angles) that are defined in the Chemical Component Dictionary. The Link column lists molecule types, if any, to which the group is linked. The Z score for a bond length (or angle) is the number of standard deviations the observed value is removed from the expected value. A bond length (or angle) with $|Z| > 2$ is considered an outlier worth inspection. RMSZ is the root-mean-square of all Z scores of the bond lengths (or angles).

Mol	Type	Chain	Res	Link	Bond lengths			Bond angles		
					Counts	RMSZ	# Z > 2	Counts	RMSZ	# Z > 2
4	SO4	A	901	-	4,4,4	0.32	0	6,6,6	0.38	0
4	SO4	A	902	-	4,4,4	0.41	0	6,6,6	0.52	0
6	MES	A	909	-	12,12,12	1.94	1 (8%)	15,16,16	1.47	2 (13%)
5	MPD	A	907	-	7,7,7	0.29	0	9,10,10	0.27	0
4	SO4	A	905	-	4,4,4	0.24	0	6,6,6	0.05	0
5	MPD	A	906	-	7,7,7	0.31	0	9,10,10	0.28	0
4	SO4	A	903	-	4,4,4	0.19	0	6,6,6	0.32	0
5	MPD	A	908	-	7,7,7	0.33	0	9,10,10	0.46	0
7	DCP	A	910	-	28,29,29	2.52	9 (32%)	41,45,45	1.02	2 (4%)
4	SO4	A	904	-	4,4,4	0.26	0	6,6,6	0.18	0

In the following table, the Chirals column lists the number of chiral outliers, the number of chiral centers analysed, the number of these observed in the model and the number defined in the Chemical Component Dictionary. Similar counts are reported in the Torsion and Rings columns. '-' means no outliers of that kind were identified.

Mol	Type	Chain	Res	Link	Chirals	Torsions	Rings
6	MES	A	909	-	-	5/6/14/14	0/1/1/1
5	MPD	A	907	-	-	0/5/5/5	-
5	MPD	A	906	-	-	2/5/5/5	-
5	MPD	A	908	-	-	2/5/5/5	-
7	DCP	A	910	-	-	1/22/34/34	0/2/2/2

All (10) bond length outliers are listed below:

Mol	Chain	Res	Type	Atoms	Z	Observed(Å)	Ideal(Å)
6	A	909	MES	C8-S	-6.42	1.68	1.77
7	A	910	DCP	PB-O3A	-6.00	1.53	1.59
7	A	910	DCP	PA-O3A	-5.98	1.53	1.59
7	A	910	DCP	C4-N4	5.84	1.48	1.33
7	A	910	DCP	C2'-C3'	-5.08	1.40	1.52
7	A	910	DCP	O4'-C4'	-2.70	1.39	1.45
7	A	910	DCP	PB-O3B	-2.52	1.56	1.59
7	A	910	DCP	C2-N1	-2.43	1.35	1.40
7	A	910	DCP	C3'-C4'	-2.40	1.46	1.53
7	A	910	DCP	C6-C5	2.11	1.40	1.35

All (4) bond angle outliers are listed below:

Mol	Chain	Res	Type	Atoms	Z	Observed(°)	Ideal(°)
6	A	909	MES	O2S-S-C8	3.39	111.86	106.73

Continued on next page...

Continued from previous page...

Mol	Chain	Res	Type	Atoms	Z	Observed(°)	Ideal(°)
6	A	909	MES	C5-N4-C3	3.36	116.08	108.84
7	A	910	DCP	O4'-C1'-N1	2.92	113.05	107.86
7	A	910	DCP	C5-C6-N1	-2.29	118.11	121.84

There are no chirality outliers.

All (10) torsion outliers are listed below:

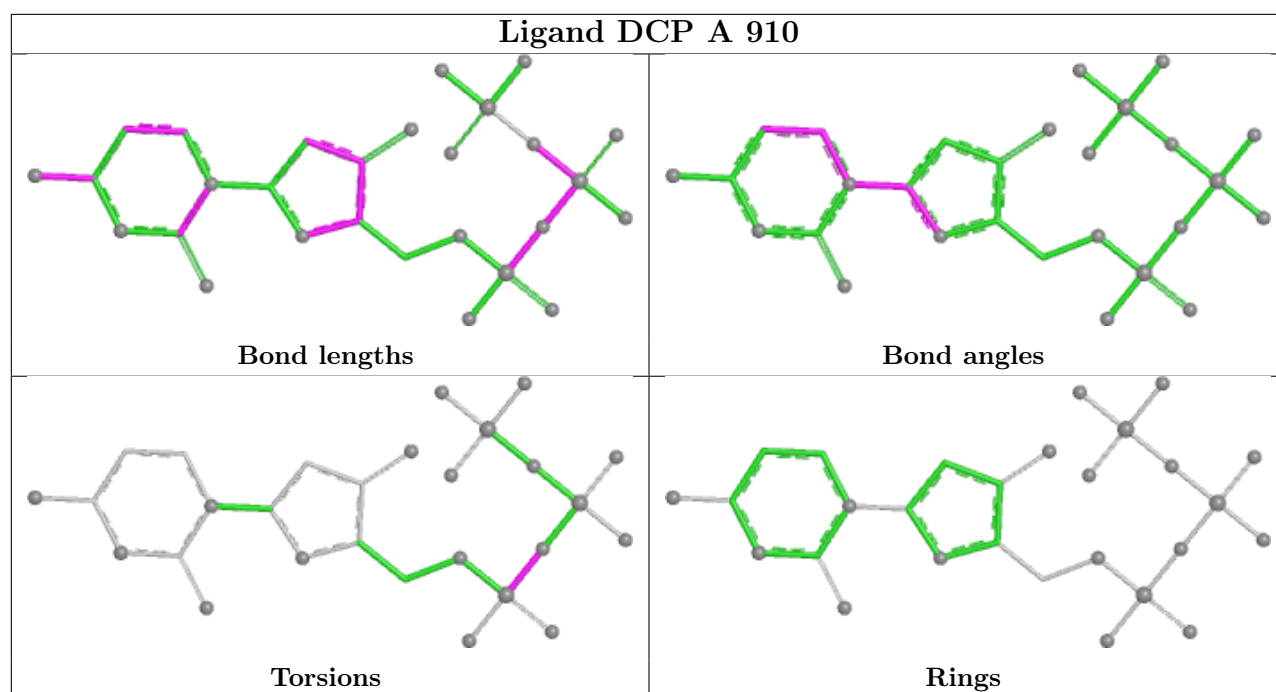
Mol	Chain	Res	Type	Atoms
5	A	906	MPD	C2-C3-C4-O4
5	A	906	MPD	C2-C3-C4-C5
6	A	909	MES	C8-C7-N4-C5
6	A	909	MES	C7-C8-S-O3S
6	A	909	MES	C8-C7-N4-C3
6	A	909	MES	C7-C8-S-O1S
6	A	909	MES	C7-C8-S-O2S
5	A	908	MPD	CM-C2-C3-C4
7	A	910	DCP	PB-O3A-PA-O1A
5	A	908	MPD	C1-C2-C3-C4

There are no ring outliers.

4 monomers are involved in 7 short contacts:

Mol	Chain	Res	Type	Clashes	Symm-Clashes
5	A	906	MPD	3	0
4	A	903	SO4	1	0
7	A	910	DCP	2	0
4	A	904	SO4	2	0

The following is a two-dimensional graphical depiction of Mogul quality analysis of bond lengths, bond angles, torsion angles, and ring geometry for all instances of the Ligand of Interest. In addition, ligands with molecular weight > 250 and outliers as shown on the validation Tables will also be included. For torsion angles, if less than 5% of the Mogul distribution of torsion angles is within 10 degrees of the torsion angle in question, then that torsion angle is considered an outlier. Any bond that is central to one or more torsion angles identified as an outlier by Mogul will be highlighted in the graph. For rings, the root-mean-square deviation (RMSD) between the ring in question and similar rings identified by Mogul is calculated over all ring torsion angles. If the average RMSD is greater than 60 degrees and the minimal RMSD between the ring in question and any Mogul-identified rings is also greater than 60 degrees, then that ring is considered an outlier. The outliers are highlighted in purple. The color gray indicates Mogul did not find sufficient equivalents in the CSD to analyse the geometry.



5.7 Other polymers [i](#)

There are no such residues in this entry.

5.8 Polymer linkage issues [i](#)

There are no chain breaks in this entry.

6 Fit of model and data [i](#)

6.1 Protein, DNA and RNA chains [i](#)

In the following table, the column labelled ‘#RSRZ> 2’ contains the number (and percentage) of RSRZ outliers, followed by percent RSRZ outliers for the chain as percentile scores relative to all X-ray entries and entries of similar resolution. The OWAB column contains the minimum, median, 95th percentile and maximum values of the occupancy-weighted average B-factor per residue. The column labelled ‘Q< 0.9’ lists the number of (and percentage) of residues with an average occupancy less than 0.9.

Mol	Chain	Analysed	<RSRZ>	#RSRZ>2	OWAB(Å ²)	Q<0.9
1	A	580/592 (97%)	-0.18	12 (2%) 63 73	8, 21, 44, 66	13 (2%)
2	B	8/9 (88%)	0.13	0 100 100	18, 27, 56, 68	0
3	C	9/13 (69%)	0.41	1 (11%) 10 16	20, 28, 43, 55	0
All	All	597/614 (97%)	-0.17	13 (2%) 62 73	8, 21, 45, 68	13 (2%)

All (13) RSRZ outliers are listed below:

Mol	Chain	Res	Type	RSRZ
1	A	297	ALA	5.3
1	A	786	PHE	4.4
1	A	531	PRO	3.8
1	A	433	ALA	3.3
1	A	719	TYR	3.2
1	A	431	LYS	2.8
1	A	729	ARG	2.7
1	A	532	LYS	2.7
3	C	4	DG	2.4
1	A	559	ASP	2.4
1	A	551	LYS	2.2
1	A	758	LYS	2.1
1	A	714	TYR	2.0

6.2 Non-standard residues in protein, DNA, RNA chains [i](#)

In the following table, the Atoms column lists the number of modelled atoms in the group and the number defined in the chemical component dictionary. The B-factors column lists the minimum, median, 95th percentile and maximum values of B factors of atoms in the group. The column labelled ‘Q< 0.9’ lists the number of atoms with occupancy less than 0.9.

Mol	Type	Chain	Res	Atoms	RSCC	RSR	B-factors(\AA^2)	Q<0.9
2	DOC	B	29	18/19	0.97	0.07	16,19,27,27	0

6.3 Carbohydrates [i](#)

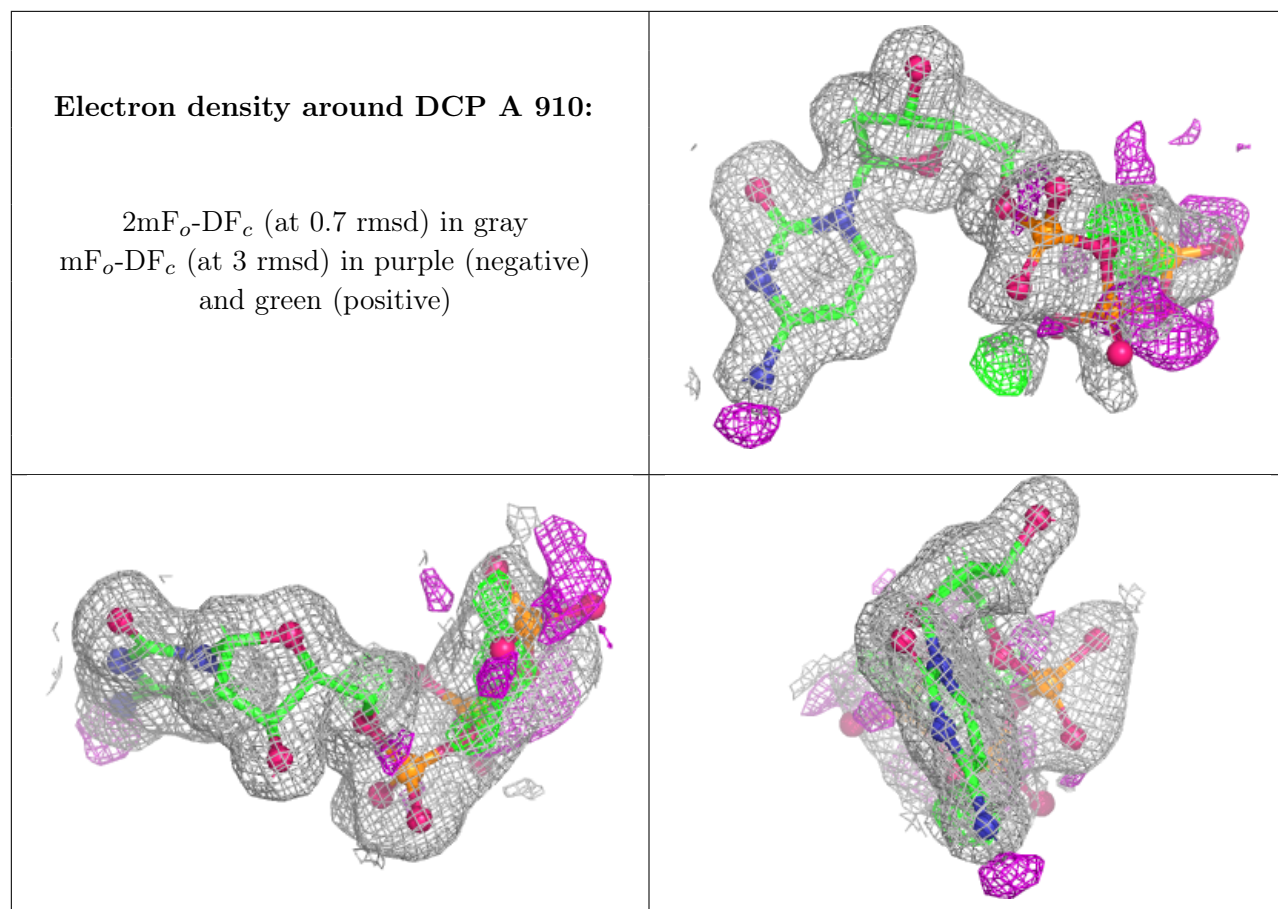
There are no oligosaccharides in this entry.

6.4 Ligands [i](#)

In the following table, the Atoms column lists the number of modelled atoms in the group and the number defined in the chemical component dictionary. The B-factors column lists the minimum, median, 95th percentile and maximum values of B factors of atoms in the group. The column labelled 'Q< 0.9' lists the number of atoms with occupancy less than 0.9.

Mol	Type	Chain	Res	Atoms	RSCC	RSR	B-factors(\AA^2)	Q<0.9
4	SO4	A	905	5/5	0.80	0.13	88,88,92,93	0
5	MPD	A	906	8/8	0.86	0.13	23,42,54,58	2
6	MES	A	909	12/12	0.88	0.15	16,25,33,37	25
5	MPD	A	908	8/8	0.89	0.11	25,30,50,74	4
4	SO4	A	904	5/5	0.89	0.10	51,52,59,69	0
5	MPD	A	907	8/8	0.90	0.16	34,47,63,63	4
4	SO4	A	902	5/5	0.92	0.14	23,26,29,32	0
4	SO4	A	901	5/5	0.95	0.08	31,32,39,50	0
7	DCP	A	910	28/28	0.95	0.11	14,23,91,102	2
4	SO4	A	903	5/5	0.96	0.09	31,32,41,51	0

The following is a graphical depiction of the model fit to experimental electron density of all instances of the Ligand of Interest. In addition, ligands with molecular weight > 250 and outliers as shown on the geometry validation Tables will also be included. Each fit is shown from different orientation to approximate a three-dimensional view.



6.5 Other polymers [i](#)

There are no such residues in this entry.