



# Full wwPDB X-ray Structure Validation Report ⓘ

Mar 5, 2026 – 04:14 PM UTC

PDB ID : 4E1K / pdb\_00004e1k  
Title : GlmU in complex with a Quinazoline Compound  
Authors : Larsen, N.A.; Doig, P.  
Deposited on : 2012-03-06  
Resolution : 2.00 Å(reported)

This is a Full wwPDB X-ray Structure Validation Report for a publicly released PDB entry.

We welcome your comments at [validation@mail.wwpdb.org](mailto:validation@mail.wwpdb.org)

A user guide is available at

<https://www.wwpdb.org/validation/2017/XrayValidationReportHelp>

with specific help available everywhere you see the ⓘ symbol.

The types of validation reports are described at

<http://www.wwpdb.org/validation/2017/FAQs#types>.

---

The following versions of software and data (see [references ⓘ](#)) were used in the production of this report:

MolProbity : 4-5-2 with Phenix2.0  
Mogul : 2022.3.0, CSD as543be (2022)  
Xtrriage (Phenix) : 2.0  
EDS : 3.0  
Buster-report : wwPDB partial adaption of 1.1.7 (2018)  
Percentile statistics : 20250101.v01 (using entries in the PDB archive January 1st 2025)  
CCP4 : 9.0.010 (Gargrove)  
Density-Fitness : 1.0.12  
Ideal geometry (proteins) : Engh & Huber (2001)  
Ideal geometry (DNA, RNA) : Parkinson et al. (1996)  
Validation Pipeline (wwPDB-VP) : 2.49

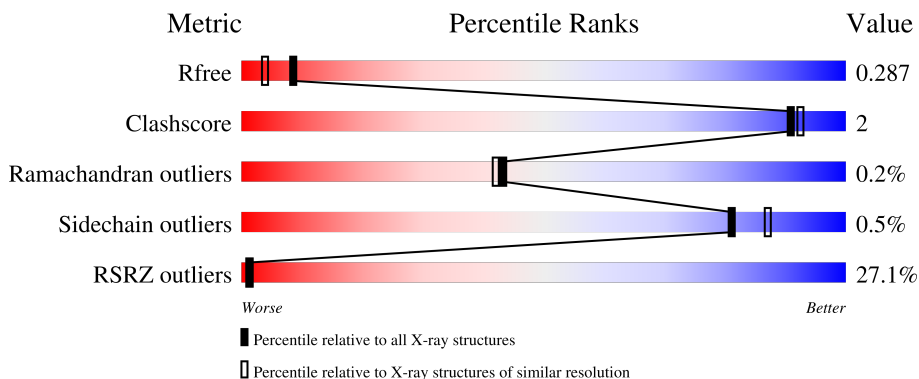
# 1 Overall quality at a glance

The following experimental techniques were used to determine the structure:

*X-RAY DIFFRACTION*

The reported resolution of this entry is 2.00 Å.

Percentile scores (ranging between 0-100) for global validation metrics of the entry are shown in the following graphic. The table shows the number of entries on which the scores are based.



Metric	Whole archive (#Entries)	Similar resolution (#Entries, resolution range(Å))
$R_{free}$	180053	10052 (2.00-2.00)
Clashscore	190562	11152 (2.00-2.00)
Ramachandran outliers	187476	11031 (2.00-2.00)
Sidechain outliers	187428	11029 (2.00-2.00)
RSRZ outliers	180081	10067 (2.00-2.00)

The table below summarises the geometric issues observed across the polymeric chains and their fit to the electron density. The red, orange, yellow and green segments of the lower bar indicate the fraction of residues that contain outliers for  $\geq 3$ , 2, 1 and 0 types of geometric quality criteria respectively. A grey segment represents the fraction of residues that are not modelled. The numeric value for each fraction is indicated below the corresponding segment, with a dot representing fractions  $\leq 5\%$ . The upper red bar (where present) indicates the fraction of residues that have poor fit to the electron density. The numeric value is given above the bar.

Mol	Chain	Length	Quality of chain
1	A	456	

## 2 Entry composition [i](#)

There are 5 unique types of molecules in this entry. The entry contains 3879 atoms, of which 0 are hydrogens and 0 are deuteriums.

In the tables below, the ZeroOcc column contains the number of atoms modelled with zero occupancy, the AltConf column contains the number of residues with at least one atom in alternate conformation and the Trace column contains the number of residues modelled with at most 2 atoms.

- Molecule 1 is a protein called Bifunctional protein GlnU.

Mol	Chain	Residues	Atoms					ZeroOcc	AltConf	Trace
			Total	C	N	O	S			
1	A	450	3414	2142	603	659	10	0	7	0

- Molecule 2 is SULFATE ION (CCD ID: SO4) (formula: O<sub>4</sub>S).



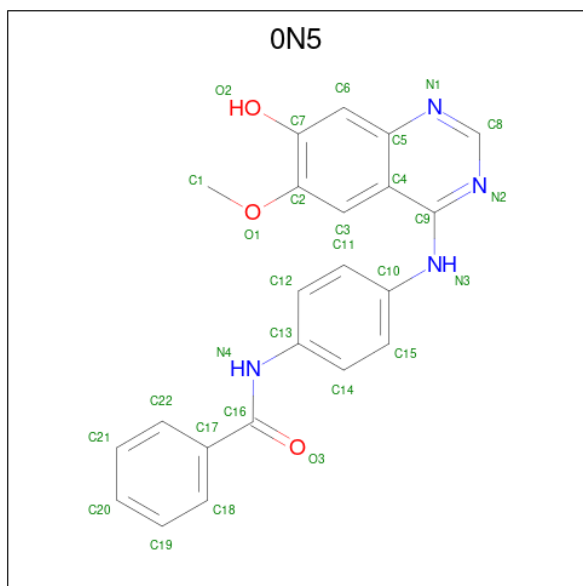
Mol	Chain	Residues	Atoms			ZeroOcc	AltConf
			Total	O	S		
2	A	1	5	4	1	0	0
2	A	1	5	4	1	0	0
2	A	1	5	4	1	0	0

- Molecule 3 is TETRAETHYLENE GLYCOL (CCD ID: PG4) (formula: C<sub>8</sub>H<sub>18</sub>O<sub>5</sub>).



Mol	Chain	Residues	Atoms			ZeroOcc	AltConf
3	A	1	Total	C	O	0	0
			13	8	5		

- Molecule 4 is N-{4-[(7-hydroxy-6-methoxyquinazolin-4-yl)amino]phenyl}benzamide (CCD ID: 0N5) (formula: C<sub>22</sub>H<sub>18</sub>N<sub>4</sub>O<sub>3</sub>).



Mol	Chain	Residues	Atoms				ZeroOcc	AltConf
4	A	1	Total	C	N	O	0	0
			29	22	4	3		

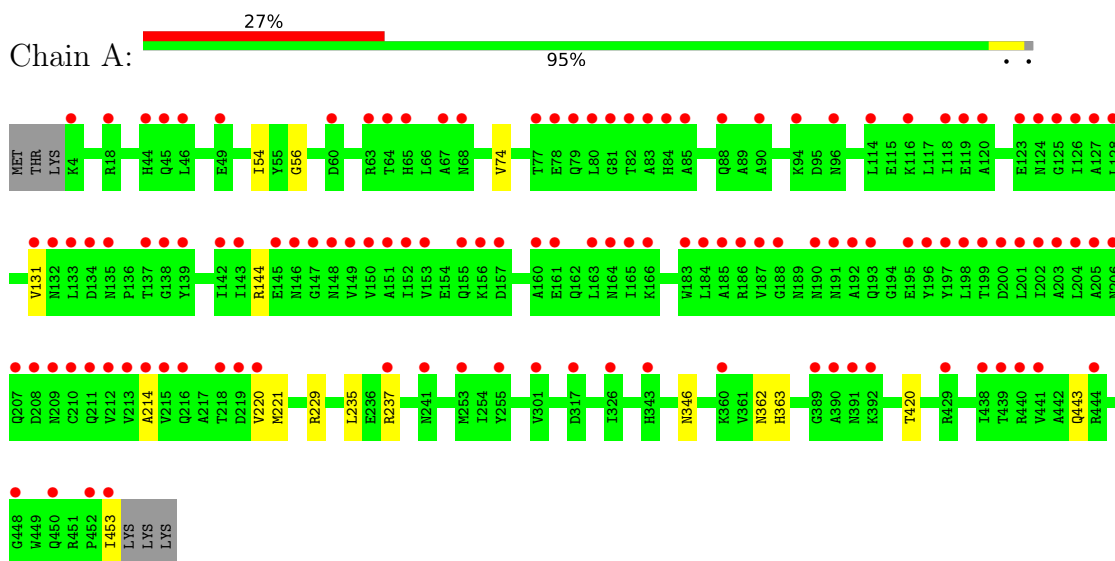
- Molecule 5 is water.

<b>Mol</b>	<b>Chain</b>	<b>Residues</b>	<b>Atoms</b>		<b>ZeroOcc</b>	<b>AltConf</b>
5	A	408	Total 408	O 408	0	0

### 3 Residue-property plots [i](#)

These plots are drawn for all protein, RNA, DNA and oligosaccharide chains in the entry. The first graphic for a chain summarises the proportions of the various outlier classes displayed in the second graphic. The second graphic shows the sequence view annotated by issues in geometry and electron density. Residues are color-coded according to the number of geometric quality criteria for which they contain at least one outlier: green = 0, yellow = 1, orange = 2 and red = 3 or more. A red dot above a residue indicates a poor fit to the electron density ( $RSRZ > 2$ ). Stretches of 2 or more consecutive residues without any outlier are shown as a green connector. Residues present in the sample, but not in the model, are shown in grey.

- Molecule 1: Bifunctional protein GlmU



## 4 Data and refinement statistics

Property	Value	Source
Space group	H 3 2	Depositor
Cell constants a, b, c, $\alpha$ , $\beta$ , $\gamma$	109.03Å 109.03Å 323.60Å 90.00° 90.00° 120.00°	Depositor
Resolution (Å)	54.55 – 2.00 54.55 – 2.00	Depositor EDS
% Data completeness (in resolution range)	92.0 (54.55-2.00) 92.0 (54.55-2.00)	Depositor EDS
$R_{merge}$	(Not available)	Depositor
$R_{sym}$	(Not available)	Depositor
$\langle I/\sigma(I) \rangle$ <sup>1</sup>	1.71 (at 2.00Å)	Xtrriage
Refinement program	REFMAC 5.5.0046	Depositor
R, $R_{free}$	0.245 , 0.284 0.252 , 0.287	Depositor DCC
$R_{free}$ test set	2354 reflections (4.66%)	wwPDB-VP
Wilson B-factor (Å <sup>2</sup> )	32.1	Xtrriage
Anisotropy	0.028	Xtrriage
Bulk solvent $k_{sol}$ (e/Å <sup>3</sup> ), $B_{sol}$ (Å <sup>2</sup> )	0.36 , 51.8	EDS
L-test for twinning <sup>2</sup>	$\langle  L  \rangle = 0.55$ , $\langle L^2 \rangle = 0.40$	Xtrriage
Estimated twinning fraction	No twinning to report.	Xtrriage
$F_o, F_c$ correlation	0.94	EDS
Total number of atoms	3879	wwPDB-VP
Average B, all atoms (Å <sup>2</sup> )	50.0	wwPDB-VP

Xtrriage's analysis on translational NCS is as follows: *The largest off-origin peak in the Patterson function is 6.86% of the height of the origin peak. No significant pseudotranslation is detected.*

<sup>1</sup>Intensities estimated from amplitudes.

<sup>2</sup>Theoretical values of  $\langle |L| \rangle$ ,  $\langle L^2 \rangle$  for acentric reflections are 0.5, 0.333 respectively for untwinned datasets, and 0.375, 0.2 for perfectly twinned datasets.

## 5 Model quality [i](#)

### 5.1 Standard geometry [i](#)

Bond lengths and bond angles in the following residue types are not validated in this section: PG4, SO4, ON5

The Z score for a bond length (or angle) is the number of standard deviations the observed value is removed from the expected value. A bond length (or angle) with  $|Z| > 5$  is considered an outlier worth inspection. RMSZ is the root-mean-square of all Z scores of the bond lengths (or angles).

Mol	Chain	Bond lengths		Bond angles	
		RMSZ	# Z  >5	RMSZ	# Z  >5
1	A	0.50	0/3462	0.71	1/4695 (0.0%)

There are no bond length outliers.

All (1) bond angle outliers are listed below:

Mol	Chain	Res	Type	Atoms	Z	Observed( $^{\circ}$ )	Ideal( $^{\circ}$ )
1	A	362	ASN	N-CA-C	5.10	119.65	113.38

There are no chirality outliers.

There are no planarity outliers.

### 5.2 Too-close contacts [i](#)

In the following table, the Non-H and H(model) columns list the number of non-hydrogen atoms and hydrogen atoms in the chain respectively. The H(added) column lists the number of hydrogen atoms added and optimized by MolProbity. The Clashes column lists the number of clashes within the asymmetric unit, whereas Symm-Clashes lists symmetry-related clashes.

Mol	Chain	Non-H	H(model)	H(added)	Clashes	Symm-Clashes
1	A	3414	0	3435	12	0
2	A	15	0	0	0	0
3	A	13	0	18	1	0
4	A	29	0	18	0	0
5	A	408	0	0	5	0
All	All	3879	0	3471	12	0

The all-atom clashscore is defined as the number of clashes found per 1000 atoms (including hydrogen atoms). The all-atom clashscore for this structure is 2.

All (12) close contacts within the same asymmetric unit are listed below, sorted by their clash magnitude.

Atom-1	Atom-2	Interatomic distance (Å)	Clash overlap (Å)
1:A:131:VAL:HG21	1:A:220:VAL:HG22	1.77	0.66
1:A:221:MET:HE3	1:A:235:LEU:HD23	1.81	0.63
1:A:221:MET:CE	1:A:235:LEU:HD23	2.35	0.57
1:A:453:ILE:HD11	5:A:769:HOH:O	2.07	0.55
1:A:220:VAL:HG23	5:A:705:HOH:O	2.07	0.53
1:A:131:VAL:CG2	1:A:220:VAL:HG22	2.39	0.52
1:A:237:ARG:HG2	5:A:650:HOH:O	2.12	0.49
1:A:443:GLN:NE2	5:A:940:HOH:O	2.44	0.49
1:A:229:ARG:HG2	5:A:614:HOH:O	2.15	0.46
1:A:54:ILE:HD13	1:A:74:VAL:HB	1.99	0.45
1:A:420:THR:HG21	3:A:504:PG4:H31	2.01	0.43
1:A:144:ARG:NH2	1:A:214:ALA:HB3	2.35	0.41

There are no symmetry-related clashes.

## 5.3 Torsion angles [i](#)

### 5.3.1 Protein backbone [i](#)

In the following table, the Percentiles column shows the percent Ramachandran outliers of the chain as a percentile score with respect to all X-ray entries followed by that with respect to entries of similar resolution.

The Analysed column shows the number of residues for which the backbone conformation was analysed, and the total number of residues.

Mol	Chain	Analysed	Favoured	Allowed	Outliers	Percentiles
1	A	448/456 (98%)	438 (98%)	9 (2%)	1 (0%)	43 42

All (1) Ramachandran outliers are listed below:

Mol	Chain	Res	Type
1	A	56	GLY

### 5.3.2 Protein sidechains [i](#)

In the following table, the Percentiles column shows the percent sidechain outliers of the chain as a percentile score with respect to all X-ray entries followed by that with respect to entries of similar resolution.

The Analysed column shows the number of residues for which the sidechain conformation was analysed, and the total number of residues.

Mol	Chain	Analysed	Rotameric	Outliers	Percentiles
1	A	365/371 (98%)	363 (100%)	2 (0%)	81 87

All (2) residues with a non-rotameric sidechain are listed below:

Mol	Chain	Res	Type
1	A	346	ASN
1	A	363	HIS

Sometimes sidechains can be flipped to improve hydrogen bonding and reduce clashes. All (8) such sidechains are listed below:

Mol	Chain	Res	Type
1	A	28	HIS
1	A	70	GLN
1	A	96	ASN
1	A	209	ASN
1	A	216	GLN
1	A	283	ASN
1	A	375	ASN
1	A	443	GLN

### 5.3.3 RNA [i](#)

There are no RNA molecules in this entry.

### 5.4 Non-standard residues in protein, DNA, RNA chains [i](#)

There are no non-standard protein/DNA/RNA residues in this entry.

### 5.5 Carbohydrates [i](#)

There are no oligosaccharides in this entry.

### 5.6 Ligand geometry [i](#)

5 ligands are modelled in this entry.

In the following table, the Counts columns list the number of bonds (or angles) for which Mogul statistics could be retrieved, the number of bonds (or angles) that are observed in the model and the number of bonds (or angles) that are defined in the Chemical Component Dictionary. The Link column lists molecule types, if any, to which the group is linked. The Z score for a bond length (or angle) is the number of standard deviations the observed value is removed from the expected value. A bond length (or angle) with  $|Z| > 2$  is considered an outlier worth inspection. RMSZ is the root-mean-square of all Z scores of the bond lengths (or angles).

Mol	Type	Chain	Res	Link	Bond lengths			Bond angles		
					Counts	RMSZ	# Z  > 2	Counts	RMSZ	# Z  > 2
4	0N5	A	505	-	32,32,32	1.40	4 (12%)	44,44,44	1.23	4 (9%)
2	SO4	A	503	-	4,4,4	0.25	0	6,6,6	0.20	0
3	PG4	A	504	-	12,12,12	0.46	0	11,11,11	0.25	0
2	SO4	A	501	-	4,4,4	0.26	0	6,6,6	0.17	0
2	SO4	A	502	-	4,4,4	0.24	0	6,6,6	0.09	0

In the following table, the Chirals column lists the number of chiral outliers, the number of chiral centers analysed, the number of these observed in the model and the number defined in the Chemical Component Dictionary. Similar counts are reported in the Torsion and Rings columns. '-' means no outliers of that kind were identified.

Mol	Type	Chain	Res	Link	Chirals	Torsions	Rings
4	0N5	A	505	-	-	0/14/14/14	0/4/4/4
3	PG4	A	504	-	-	2/10/10/10	-

All (4) bond length outliers are listed below:

Mol	Chain	Res	Type	Atoms	Z	Observed(Å)	Ideal(Å)
4	A	505	0N5	C9-C4	-4.57	1.39	1.44
4	A	505	0N5	C9-N3	3.85	1.42	1.36
4	A	505	0N5	C6-C5	-2.22	1.38	1.41
4	A	505	0N5	C4-C5	-2.09	1.39	1.42

All (4) bond angle outliers are listed below:

Mol	Chain	Res	Type	Atoms	Z	Observed(°)	Ideal(°)
4	A	505	0N5	C3-C4-C9	-3.81	121.74	124.84
4	A	505	0N5	C1-O1-C2	-3.40	112.52	117.51
4	A	505	0N5	C10-N3-C9	-2.65	121.44	128.22
4	A	505	0N5	C9-C4-C5	2.43	117.29	115.86

There are no chirality outliers.

All (2) torsion outliers are listed below:

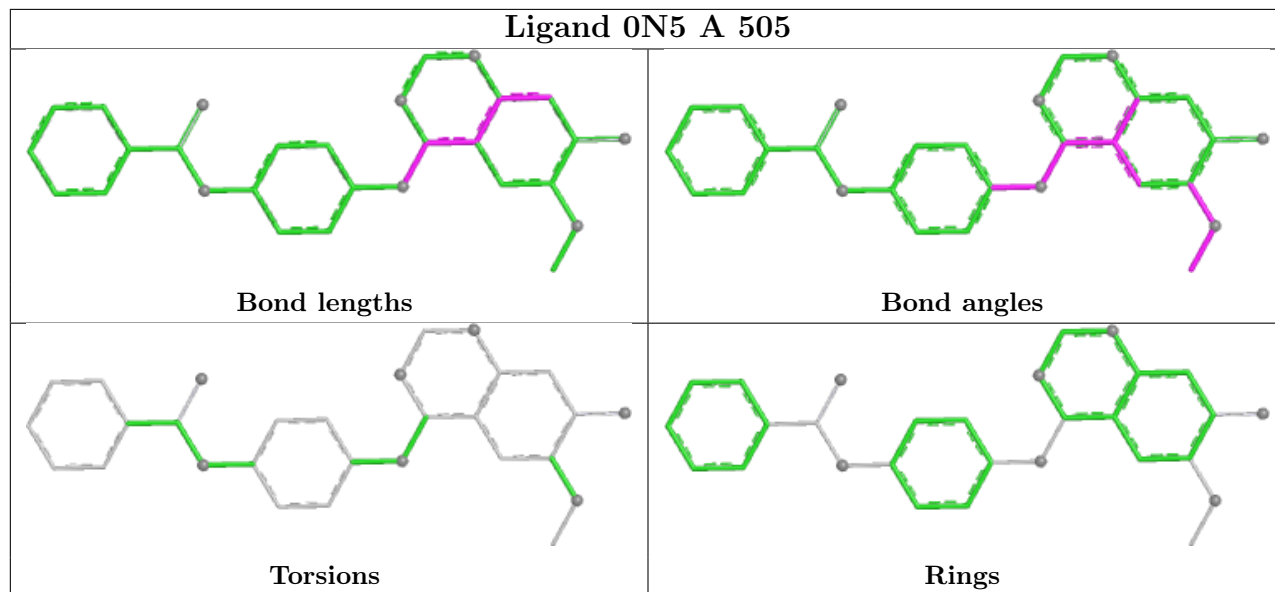
Mol	Chain	Res	Type	Atoms
3	A	504	PG4	O1-C1-C2-O2
3	A	504	PG4	C1-C2-O2-C3

There are no ring outliers.

1 monomer is involved in 1 short contact:

Mol	Chain	Res	Type	Clashes	Symm-Clashes
3	A	504	PG4	1	0

The following is a two-dimensional graphical depiction of Mogul quality analysis of bond lengths, bond angles, torsion angles, and ring geometry for all instances of the Ligand of Interest. In addition, ligands with molecular weight > 250 and outliers as shown on the validation Tables will also be included. For torsion angles, if less than 5% of the Mogul distribution of torsion angles is within 10 degrees of the torsion angle in question, then that torsion angle is considered an outlier. Any bond that is central to one or more torsion angles identified as an outlier by Mogul will be highlighted in the graph. For rings, the root-mean-square deviation (RMSD) between the ring in question and similar rings identified by Mogul is calculated over all ring torsion angles. If the average RMSD is greater than 60 degrees and the minimal RMSD between the ring in question and any Mogul-identified rings is also greater than 60 degrees, then that ring is considered an outlier. The outliers are highlighted in purple. The color gray indicates Mogul did not find sufficient equivalents in the CSD to analyse the geometry.



## 5.7 Other polymers [\(i\)](#)

There are no such residues in this entry.

## 5.8 Polymer linkage issues

There are no chain breaks in this entry.

## 6 Fit of model and data

### 6.1 Protein, DNA and RNA chains

In the following table, the column labelled ‘#RSRZ> 2’ contains the number (and percentage) of RSRZ outliers, followed by percent RSRZ outliers for the chain as percentile scores relative to all X-ray entries and entries of similar resolution. The OWAB column contains the minimum, median, 95<sup>th</sup> percentile and maximum values of the occupancy-weighted average B-factor per residue. The column labelled ‘Q< 0.9’ lists the number of (and percentage) of residues with an average occupancy less than 0.9.

Mol	Chain	Analysed	<RSRZ>	#RSRZ>2	OWAB(Å <sup>2</sup> )	Q<0.9
1	A	450/456 (98%)	1.48	122 (27%) <b>1</b> <b>1</b>	29, 46, 66, 74	6 (1%)

All (122) RSRZ outliers are listed below:

Mol	Chain	Res	Type	RSRZ
1	A	390	ALA	9.8
1	A	389	GLY	8.7
1	A	391	ASN	6.7
1	A	147	GLY	6.5
1	A	46[A]	LEU	5.8
1	A	148	ASN	5.5
1	A	197	TYR	5.2
1	A	204	LEU	5.0
1	A	452	PRO	4.9
1	A	146	ASN	4.8
1	A	192	ALA	4.7
1	A	206	ASN	4.6
1	A	212	VAL	4.5
1	A	185	ALA	4.4
1	A	201	LEU	4.2
1	A	202	ILE	4.1
1	A	96	ASN	4.1
1	A	151	ALA	4.1
1	A	203	ALA	4.1
1	A	152	ILE	4.1
1	A	453	ILE	4.1
1	A	161	GLU	4.1
1	A	253[A]	MET	4.0
1	A	153	VAL	4.0
1	A	45	GLN	3.9
1	A	160	ALA	3.8
1	A	187	VAL	3.8

*Continued on next page...*

*Continued from previous page...*

Mol	Chain	Res	Type	RSRZ
1	A	392	LYS	3.7
1	A	220	VAL	3.7
1	A	186	ARG	3.6
1	A	326[A]	ILE	3.6
1	A	81	GLY	3.6
1	A	205	ALA	3.6
1	A	216	GLN	3.6
1	A	82	THR	3.5
1	A	209	ASN	3.5
1	A	218	THR	3.5
1	A	214	ALA	3.4
1	A	156	LYS	3.4
1	A	211	GLN	3.4
1	A	199	THR	3.3
1	A	80	LEU	3.3
1	A	241	ASN	3.3
1	A	441	VAL	3.2
1	A	149	VAL	3.2
1	A	79	GLN	3.2
1	A	213	VAL	3.1
1	A	68	ASN	3.1
1	A	317	ASP	3.1
1	A	120	ALA	3.1
1	A	198	LEU	3.1
1	A	237	ARG	3.0
1	A	444	ARG	3.0
1	A	126	ILE	3.0
1	A	164	ASN	3.0
1	A	83	ALA	2.9
1	A	67	ALA	2.9
1	A	119	GLU	2.8
1	A	193	GLN	2.8
1	A	207	GLN	2.8
1	A	188	GLY	2.8
1	A	301[A]	VAL	2.8
1	A	448	GLY	2.8
1	A	255	TYR	2.8
1	A	215	VAL	2.8
1	A	94	LYS	2.7
1	A	450	GLN	2.7
1	A	60[A]	ASP	2.7
1	A	128	LEU	2.7

*Continued on next page...*

*Continued from previous page...*

<b>Mol</b>	<b>Chain</b>	<b>Res</b>	<b>Type</b>	<b>RSRZ</b>
1	A	196	TYR	2.7
1	A	438	ILE	2.7
1	A	142	ILE	2.6
1	A	165	ILE	2.6
1	A	133	LEU	2.6
1	A	208	ASP	2.6
1	A	18	ARG	2.6
1	A	64	THR	2.6
1	A	157	ASP	2.6
1	A	440	ARG	2.6
1	A	85	ALA	2.6
1	A	138	GLY	2.5
1	A	343	HIS	2.5
1	A	134	ASP	2.5
1	A	77	THR	2.5
1	A	49	GLU	2.5
1	A	137	THR	2.5
1	A	191	ASN	2.5
1	A	143	ILE	2.5
1	A	88	GLN	2.4
1	A	145	GLU	2.4
1	A	210	CYS	2.4
1	A	184	LEU	2.4
1	A	65	HIS	2.4
1	A	429	ARG	2.4
1	A	139	TYR	2.4
1	A	439	THR	2.4
1	A	132	ASN	2.4
1	A	123	GLU	2.4
1	A	195	GLU	2.4
1	A	135	ASN	2.4
1	A	78	GLU	2.3
1	A	127	ALA	2.3
1	A	360	LYS	2.3
1	A	131	VAL	2.3
1	A	150	VAL	2.3
1	A	183	TRP	2.3
1	A	44	HIS	2.3
1	A	118	ILE	2.3
1	A	190	ASN	2.2
1	A	219	ASP	2.2
1	A	84	HIS	2.2

*Continued on next page...*

*Continued from previous page...*

Mol	Chain	Res	Type	RSRZ
1	A	200	ASP	2.2
1	A	155	GLN	2.1
1	A	166	LYS	2.1
1	A	124	ASN	2.1
1	A	116	LYS	2.1
1	A	163	LEU	2.1
1	A	4	LYS	2.1
1	A	90	ALA	2.1
1	A	114	LEU	2.0
1	A	63	ARG	2.0
1	A	125	GLY	2.0

## 6.2 Non-standard residues in protein, DNA, RNA chains [i](#)

There are no non-standard protein/DNA/RNA residues in this entry.

## 6.3 Carbohydrates [i](#)

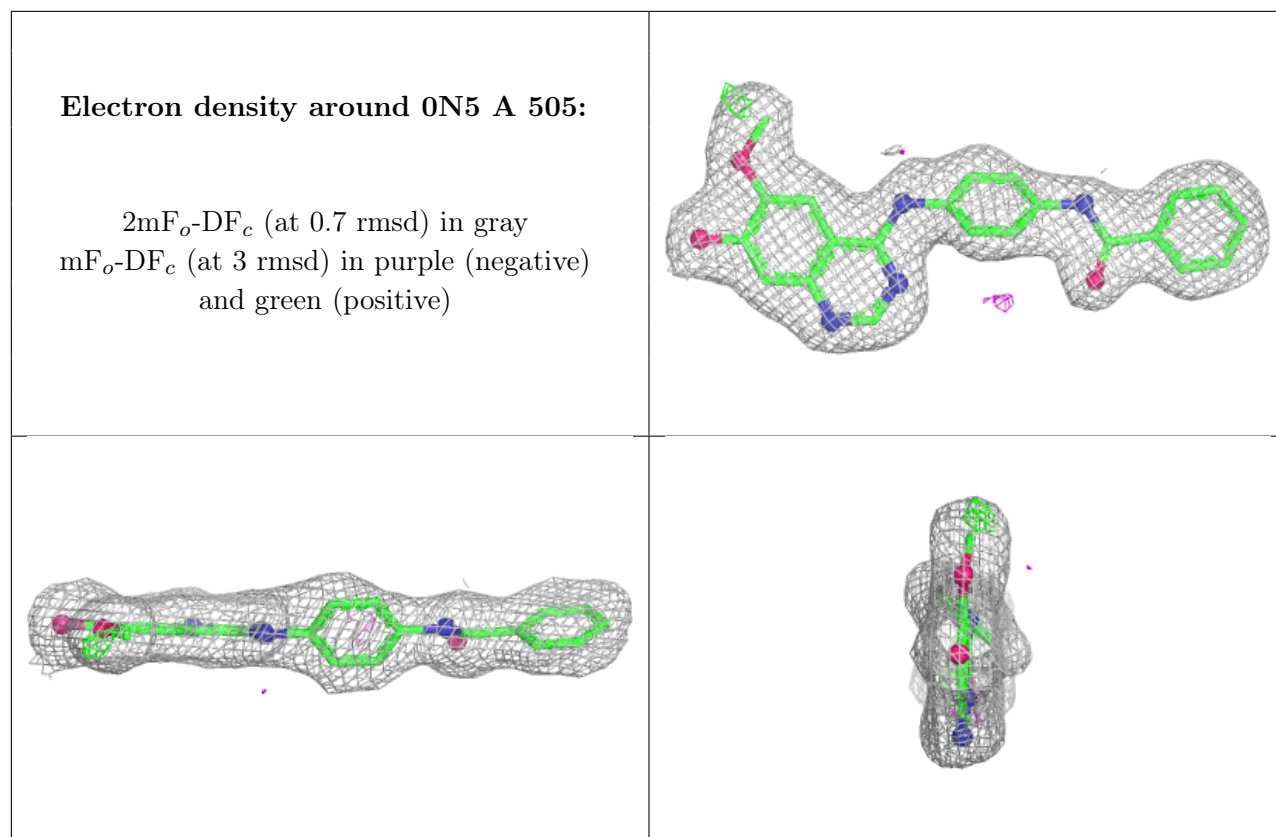
There are no oligosaccharides in this entry.

## 6.4 Ligands [i](#)

In the following table, the Atoms column lists the number of modelled atoms in the group and the number defined in the chemical component dictionary. The B-factors column lists the minimum, median, 95<sup>th</sup> percentile and maximum values of B factors of atoms in the group. The column labelled 'Q<0.9' lists the number of atoms with occupancy less than 0.9.

Mol	Type	Chain	Res	Atoms	RSCC	RSR	B-factors(Å <sup>2</sup> )	Q<0.9
2	SO4	A	503	5/5	0.75	0.18	70,70,71,71	0
3	PG4	A	504	13/13	0.86	0.22	60,63,68,68	0
2	SO4	A	502	5/5	0.88	0.13	64,64,65,66	0
2	SO4	A	501	5/5	0.89	0.14	70,70,70,70	0
4	ON5	A	505	29/29	0.94	0.10	44,46,48,49	0

The following is a graphical depiction of the model fit to experimental electron density of all instances of the Ligand of Interest. In addition, ligands with molecular weight > 250 and outliers as shown on the geometry validation Tables will also be included. Each fit is shown from different orientation to approximate a three-dimensional view.



## 6.5 Other polymers [i](#)

There are no such residues in this entry.