



Full wwPDB X-ray Structure Validation Report ⓘ

Mar 5, 2026 – 03:40 PM UTC

PDB ID : 2E26 / pdb_00002e26
Title : Crystal structure of two repeat fragment of reelin
Authors : Yasui, N.; Nogi, T.; Kitao, T.; Takagi, J.
Deposited on : 2006-11-08
Resolution : 2.00 Å(reported)

This is a Full wwPDB X-ray Structure Validation Report for a publicly released PDB entry.

We welcome your comments at validation@mail.wwpdb.org

A user guide is available at

<https://www.wwpdb.org/validation/2017/XrayValidationReportHelp>

with specific help available everywhere you see the ⓘ symbol.

The types of validation reports are described at

<http://www.wwpdb.org/validation/2017/FAQs#types>.

The following versions of software and data (see [references ⓘ](#)) were used in the production of this report:

MolProbity : 4-5-2 with Phenix2.0
Mogul : 2022.3.0, CSD as543be (2022)
Xtriage (Phenix) : 2.0
EDS : 3.0
Percentile statistics : 20250101.v01 (using entries in the PDB archive January 1st 2025)
CCP4 : 9.0.010 (Gargrove)
Density-Fitness : 1.0.12
Ideal geometry (proteins) : Engh & Huber (2001)
Ideal geometry (DNA, RNA) : Parkinson et al. (1996)
Validation Pipeline (wwPDB-VP) : 2.49

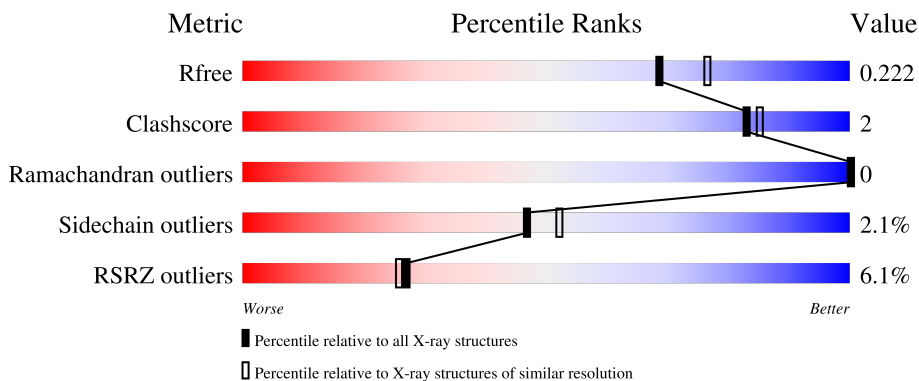
1 Overall quality at a glance

The following experimental techniques were used to determine the structure:

X-RAY DIFFRACTION

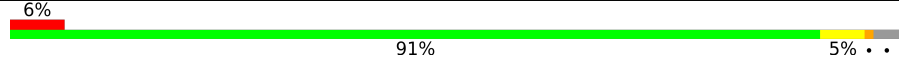


The reported resolution of this entry is 2.00 Å.

Percentile scores (ranging between 0-100) for global validation metrics of the entry are shown in the following graphic. The table shows the number of entries on which the scores are based.



Metric	Whole archive (#Entries)	Similar resolution (#Entries, resolution range(Å))
R_{free}	180053	10052 (2.00-2.00)
Clashscore	190562	11152 (2.00-2.00)
Ramachandran outliers	187476	11031 (2.00-2.00)
Sidechain outliers	187428	11029 (2.00-2.00)
RSRZ outliers	180081	10067 (2.00-2.00)

The table below summarises the geometric issues observed across the polymeric chains and their fit to the electron density. The red, orange, yellow and green segments of the lower bar indicate the fraction of residues that contain outliers for ≥ 3 , 2, 1 and 0 types of geometric quality criteria respectively. A grey segment represents the fraction of residues that are not modelled. The numeric value for each fraction is indicated below the corresponding segment, with a dot representing fractions $\leq 5\%$. The upper red bar (where present) indicates the fraction of residues that have poor fit to the electron density. The numeric value is given above the bar.

Mol	Chain	Length	Quality of chain
1	A	725	 6% 91% 5%
2	B	2	 50% 50%
3	C	3	 33% 67%

2 Entry composition i

There are 8 unique types of molecules in this entry. The entry contains 6183 atoms, of which 0 are hydrogens and 0 are deuteriums.

In the tables below, the ZeroOcc column contains the number of atoms modelled with zero occupancy, the AltConf column contains the number of residues with at least one atom in alternate conformation and the Trace column contains the number of residues modelled with at most 2 atoms.

- Molecule 1 is a protein called Reelin.

Mol	Chain	Residues	Atoms					ZeroOcc	AltConf	Trace
			Total	C	N	O	S			
1	A	705	5579	3539	945	1057	38	0	8	0

There are 11 discrepancies between the modelled and reference sequences:

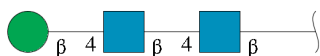
Chain	Residue	Modelled	Actual	Comment	Reference
A	1946	GLY	-	expression tag	UNP Q60841
A	1947	ARG	-	expression tag	UNP Q60841
A	2662	SER	-	expression tag	UNP Q60841
A	2663	ARG	-	expression tag	UNP Q60841
A	2664	LEU	-	expression tag	UNP Q60841
A	2665	GLU	-	expression tag	UNP Q60841
A	2666	ASN	-	expression tag	UNP Q60841
A	2667	LEU	-	expression tag	UNP Q60841
A	2668	TYR	-	expression tag	UNP Q60841
A	2669	PHE	-	expression tag	UNP Q60841
A	2670	GLN	-	expression tag	UNP Q60841

- Molecule 2 is an oligosaccharide called 2-acetamido-2-deoxy-beta-D-glucopyranose-(1-4)-2-acetamido-2-deoxy-beta-D-glucopyranose.



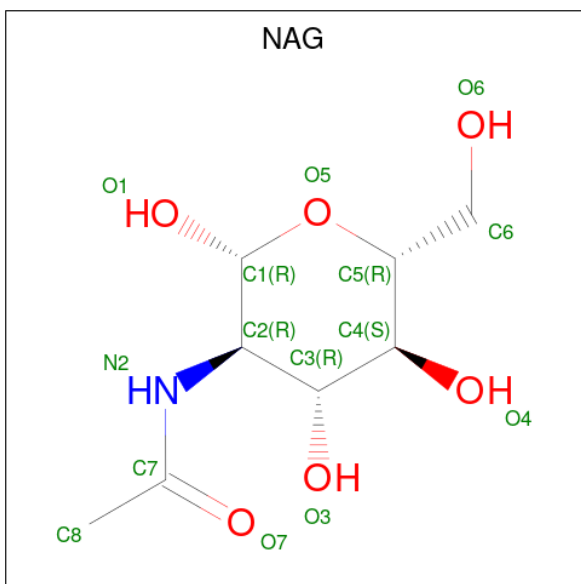
Mol	Chain	Residues	Atoms				ZeroOcc	AltConf	Trace
			Total	C	N	O			
2	B	2	28	16	2	10	0	0	0

- Molecule 3 is an oligosaccharide called beta-D-mannopyranose-(1-4)-2-acetamido-2-deoxy-beta-D-glucopyranose-(1-4)-2-acetamido-2-deoxy-beta-D-glucopyranose.



Mol	Chain	Residues	Atoms			ZeroOcc	AltConf	Trace	
			Total	C	N				O
3	C	3	39	22	2	15	0	0	0

- Molecule 4 is 2-acetamido-2-deoxy-beta-D-glucopyranose (CCD ID: NAG) (formula: $C_8H_{15}NO_6$).



Mol	Chain	Residues	Atoms			ZeroOcc	AltConf	
			Total	C	N			O
4	A	1	14	8	1	5	0	0
4	A	1	14	8	1	5	0	0

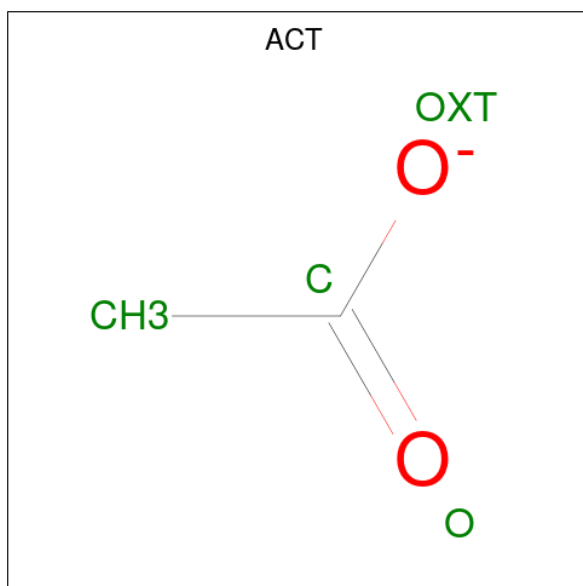
- Molecule 5 is CALCIUM ION (CCD ID: CA) (formula: Ca).

Mol	Chain	Residues	Atoms	ZeroOcc	AltConf	
			Total			
5	A	4	4	4	0	0

- Molecule 6 is ZINC ION (CCD ID: ZN) (formula: Zn).

Mol	Chain	Residues	Atoms		ZeroOcc	AltConf
6	A	2	Total	Zn	0	0
			2	2		

- Molecule 7 is ACETATE ION (CCD ID: ACT) (formula: $C_2H_3O_2$).



Mol	Chain	Residues	Atoms			ZeroOcc	AltConf
7	A	1	Total	C	O	0	0
			4	2	2		

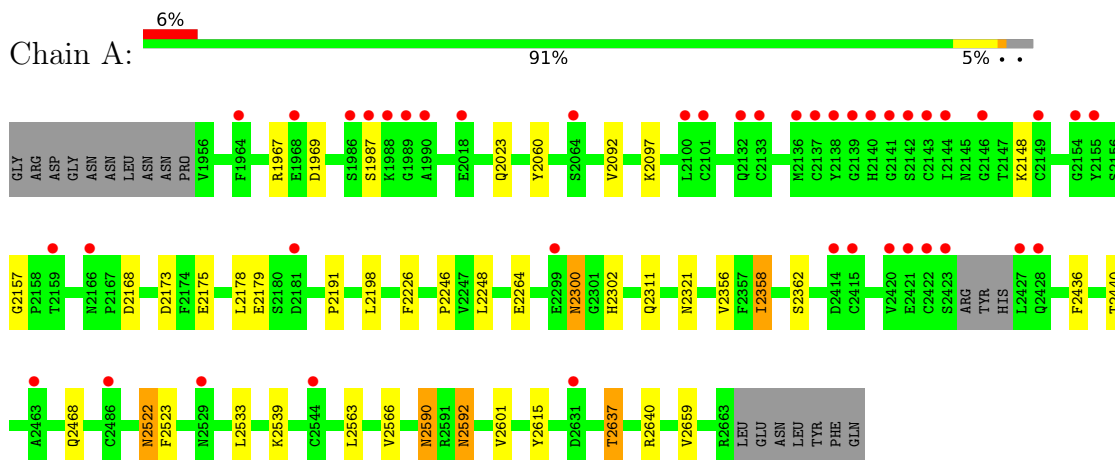
- Molecule 8 is water.

Mol	Chain	Residues	Atoms		ZeroOcc	AltConf
8	A	499	Total	O	0	0
			499	499		

3 Residue-property plots [i](#)

These plots are drawn for all protein, RNA, DNA and oligosaccharide chains in the entry. The first graphic for a chain summarises the proportions of the various outlier classes displayed in the second graphic. The second graphic shows the sequence view annotated by issues in geometry and electron density. Residues are color-coded according to the number of geometric quality criteria for which they contain at least one outlier: green = 0, yellow = 1, orange = 2 and red = 3 or more. A red dot above a residue indicates a poor fit to the electron density ($RSRZ > 2$). Stretches of 2 or more consecutive residues without any outlier are shown as a green connector. Residues present in the sample, but not in the model, are shown in grey.

- Molecule 1: Reelin



- Molecule 2: 2-acetamido-2-deoxy-beta-D-glucopyranose-(1-4)-2-acetamido-2-deoxy-beta-D-glucopyranose



- Molecule 3: beta-D-mannopyranose-(1-4)-2-acetamido-2-deoxy-beta-D-glucopyranose-(1-4)-2-acetamido-2-deoxy-beta-D-glucopyranose



4 Data and refinement statistics

Property	Value	Source
Space group	P 1 21 1	Depositor
Cell constants a, b, c, α , β , γ	61.01Å 70.95Å 94.77Å 90.00° 93.61° 90.00°	Depositor
Resolution (Å)	47.29 – 2.00 47.29 – 2.00	Depositor EDS
% Data completeness (in resolution range)	98.7 (47.29-2.00) 98.7 (47.29-2.00)	Depositor EDS
R_{merge}	0.07	Depositor
R_{sym}	0.07	Depositor
$\langle I/\sigma(I) \rangle$ ¹	3.10 (at 2.00Å)	Xtrriage
Refinement program	REFMAC 5.2.0005	Depositor
R, R_{free}	0.179 , 0.219 0.180 , 0.222	Depositor DCC
R_{free} test set	2732 reflections (3.53%)	wwPDB-VP
Wilson B-factor (Å ²)	25.1	Xtrriage
Anisotropy	0.170	Xtrriage
Bulk solvent k_{sol} (e/Å ³), B_{sol} (Å ²)	0.34 , 37.7	EDS
L-test for twinning ²	$\langle L \rangle = 0.50$, $\langle L^2 \rangle = 0.33$	Xtrriage
Estimated twinning fraction	No twinning to report.	Xtrriage
F_o, F_c correlation	0.95	EDS
Total number of atoms	6183	wwPDB-VP
Average B, all atoms (Å ²)	28.0	wwPDB-VP

Xtrriage's analysis on translational NCS is as follows: *The analyses of the Patterson function reveals a significant off-origin peak that is 21.87 % of the origin peak, indicating pseudo-translational symmetry. The chance of finding a peak of this or larger height randomly in a structure without pseudo-translational symmetry is equal to 6.4025e-03. The detected translational NCS is most likely also responsible for the elevated intensity ratio.*

¹Intensities estimated from amplitudes.

²Theoretical values of $\langle |L| \rangle$, $\langle L^2 \rangle$ for acentric reflections are 0.5, 0.333 respectively for untwinned datasets, and 0.375, 0.2 for perfectly twinned datasets.

5 Model quality [i](#)

5.1 Standard geometry [i](#)

Bond lengths and bond angles in the following residue types are not validated in this section: BMA, CA, ACT, ZN, NAG

The Z score for a bond length (or angle) is the number of standard deviations the observed value is removed from the expected value. A bond length (or angle) with $|Z| > 5$ is considered an outlier worth inspection. RMSZ is the root-mean-square of all Z scores of the bond lengths (or angles).

Mol	Chain	Bond lengths		Bond angles	
		RMSZ	# Z >5	RMSZ	# Z >5
1	A	0.52	0/5756	0.74	4/7831 (0.1%)

There are no bond length outliers.

All (4) bond angle outliers are listed below:

Mol	Chain	Res	Type	Atoms	Z	Observed(°)	Ideal(°)
1	A	2157	GLY	CA-C-N	5.21	125.26	119.32
1	A	2157	GLY	C-N-CA	5.21	125.26	119.32
1	A	2615	TYR	N-CA-C	5.18	117.67	111.71
1	A	2226	PHE	N-CA-C	5.02	116.70	109.07

There are no chirality outliers.

There are no planarity outliers.

5.2 Too-close contacts [i](#)

In the following table, the Non-H and H(model) columns list the number of non-hydrogen atoms and hydrogen atoms in the chain respectively. The H(added) column lists the number of hydrogen atoms added and optimized by MolProbity. The Clashes column lists the number of clashes within the asymmetric unit, whereas Symm-Clashes lists symmetry-related clashes.

Mol	Chain	Non-H	H(model)	H(added)	Clashes	Symm-Clashes
1	A	5579	0	5316	27	0
2	B	28	0	25	1	0
3	C	39	0	34	0	0
4	A	28	0	26	0	0
5	A	4	0	0	0	0
6	A	2	0	0	0	0
7	A	4	0	3	1	0

Continued on next page...

Continued from previous page...

Mol	Chain	Non-H	H(model)	H(added)	Clashes	Symm-Clashes
8	A	499	0	0	1	0
All	All	6183	0	5404	27	0

The all-atom clashscore is defined as the number of clashes found per 1000 atoms (including hydrogen atoms). The all-atom clashscore for this structure is 2.

All (27) close contacts within the same asymmetric unit are listed below, sorted by their clash magnitude.

Atom-1	Atom-2	Interatomic distance (Å)	Clash overlap (Å)
1:A:2248:LEU:HD22	1:A:2264:GLU:HG2	1.72	0.71
1:A:2356:VAL:HG12	1:A:2358:ILE:HG13	1.82	0.61
1:A:2321:ASN:HB2	2:B:1:NAG:H61	1.84	0.59
1:A:2522:ASN:HB3	8:A:2824:HOH:O	2.04	0.57
1:A:2198:LEU:HD11	1:A:2311:GLN:CG	2.35	0.57
1:A:2300:ASN:H	1:A:2300:ASN:HD22	1.52	0.56
1:A:2198:LEU:HD11	1:A:2311:GLN:HG2	1.88	0.55
1:A:2523:PHE:HE2	1:A:2659:VAL:HG23	1.74	0.53
1:A:2356:VAL:CG1	1:A:2358:ILE:HG13	2.39	0.53
1:A:2178:LEU:HD11	1:A:2191:PRO:HG3	1.92	0.50
1:A:2060:TYR:OH	1:A:2246:PRO:HG3	2.12	0.49
1:A:2178:LEU:CD1	1:A:2191:PRO:HG3	2.44	0.48
1:A:2590:ASN:OD1	1:A:2592:ASN:ND2	2.47	0.47
1:A:2173:ASP:CG	1:A:2175:GLU:HG2	2.39	0.47
1:A:2523:PHE:CE2	1:A:2659:VAL:HG23	2.50	0.47
1:A:2436:PHE:CD1	1:A:2440:THR:HB	2.50	0.46
1:A:2533:LEU:HG	1:A:2566:VAL:HA	1.99	0.44
1:A:2563:LEU:O	1:A:2640:ARG:HA	2.17	0.44
1:A:2601:VAL:HG12	1:A:2637:THR:HB	2.00	0.43
1:A:2168:ASP:OD2	7:A:607:ACT:H3	2.18	0.43
1:A:2023:GLN:HG3	1:A:2092:VAL:HG22	1.99	0.43
1:A:2592:ASN:C	1:A:2592:ASN:HD22	2.27	0.43
1:A:1967:ARG:NH1	1:A:1969:ASP:HB2	2.34	0.42
1:A:2300:ASN:H	1:A:2300:ASN:ND2	2.15	0.41
1:A:2300:ASN:ND2	1:A:2302[A]:HIS:H	2.18	0.41
1:A:2300:ASN:ND2	1:A:2302[B]:HIS:H	2.18	0.41
1:A:2198:LEU:HD11	1:A:2311:GLN:HG3	2.04	0.40

There are no symmetry-related clashes.

5.3 Torsion angles [i](#)

5.3.1 Protein backbone [i](#)

In the following table, the Percentiles column shows the percent Ramachandran outliers of the chain as a percentile score with respect to all X-ray entries followed by that with respect to entries of similar resolution.

The Analysed column shows the number of residues for which the backbone conformation was analysed, and the total number of residues.

Mol	Chain	Analysed	Favoured	Allowed	Outliers	Percentiles
1	A	709/725 (98%)	690 (97%)	19 (3%)	0	100 100

There are no Ramachandran outliers to report.

5.3.2 Protein sidechains [i](#)

In the following table, the Percentiles column shows the percent sidechain outliers of the chain as a percentile score with respect to all X-ray entries followed by that with respect to entries of similar resolution.

The Analysed column shows the number of residues for which the sidechain conformation was analysed, and the total number of residues.

Mol	Chain	Analysed	Rotameric	Outliers	Percentiles
1	A	625/635 (98%)	612 (98%)	13 (2%)	47 52

All (13) residues with a non-rotameric sidechain are listed below:

Mol	Chain	Res	Type
1	A	1987	SER
1	A	2097	LYS
1	A	2148	LYS
1	A	2179	GLU
1	A	2300	ASN
1	A	2358	ILE
1	A	2362	SER
1	A	2468	GLN
1	A	2522	ASN
1	A	2539	LYS
1	A	2590	ASN
1	A	2592	ASN
1	A	2637	THR

Sometimes sidechains can be flipped to improve hydrogen bonding and reduce clashes. All (6) such sidechains are listed below:

Mol	Chain	Res	Type
1	A	2263	GLN
1	A	2300	ASN
1	A	2468	GLN
1	A	2522	ASN
1	A	2590	ASN
1	A	2592	ASN

5.3.3 RNA [i](#)

There are no RNA molecules in this entry.

5.4 Non-standard residues in protein, DNA, RNA chains [i](#)

There are no non-standard protein/DNA/RNA residues in this entry.

5.5 Carbohydrates [i](#)

5 monosaccharides are modelled in this entry.

In the following table, the Counts columns list the number of bonds (or angles) for which Mogul statistics could be retrieved, the number of bonds (or angles) that are observed in the model and the number of bonds (or angles) that are defined in the Chemical Component Dictionary. The Link column lists molecule types, if any, to which the group is linked. The Z score for a bond length (or angle) is the number of standard deviations the observed value is removed from the expected value. A bond length (or angle) with $|Z| > 2$ is considered an outlier worth inspection. RMSZ is the root-mean-square of all Z scores of the bond lengths (or angles).

Mol	Type	Chain	Res	Link	Bond lengths			Bond angles		
					Counts	RMSZ	$\# Z > 2$	Counts	RMSZ	$\# Z > 2$
2	NAG	B	1	2,1	14,14,15	0.47	0	17,19,21	1.13	2 (11%)
2	NAG	B	2	2	14,14,15	0.50	0	17,19,21	1.19	1 (5%)
3	NAG	C	1	3,1	14,14,15	0.63	0	17,19,21	1.03	0
3	NAG	C	2	3	14,14,15	0.51	0	17,19,21	1.13	2 (11%)
3	BMA	C	3	3	11,11,12	0.57	0	15,15,17	0.86	1 (6%)

In the following table, the Chirals column lists the number of chiral outliers, the number of chiral centers analysed, the number of these observed in the model and the number defined in the Chemical Component Dictionary. Similar counts are reported in the Torsion and Rings columns. '-' means no outliers of that kind were identified.

Mol	Type	Chain	Res	Link	Chirals	Torsions	Rings
2	NAG	B	1	2,1	-	2/6/23/26	0/1/1/1
2	NAG	B	2	2	-	2/6/23/26	0/1/1/1
3	NAG	C	1	3,1	-	2/6/23/26	0/1/1/1
3	NAG	C	2	3	-	2/6/23/26	0/1/1/1
3	BMA	C	3	3	-	1/2/19/22	0/1/1/1

There are no bond length outliers.

All (6) bond angle outliers are listed below:

Mol	Chain	Res	Type	Atoms	Z	Observed(°)	Ideal(°)
2	B	2	NAG	C1-O5-C5	3.46	116.83	112.19
3	C	3	BMA	C1-O5-C5	3.04	116.26	112.19
2	B	1	NAG	C1-O5-C5	2.55	115.61	112.19
3	C	2	NAG	C4-C3-C2	2.39	114.52	111.02
2	B	1	NAG	O5-C1-C2	-2.23	107.85	111.29
3	C	2	NAG	O5-C1-C2	-2.12	108.02	111.29

There are no chirality outliers.

All (9) torsion outliers are listed below:

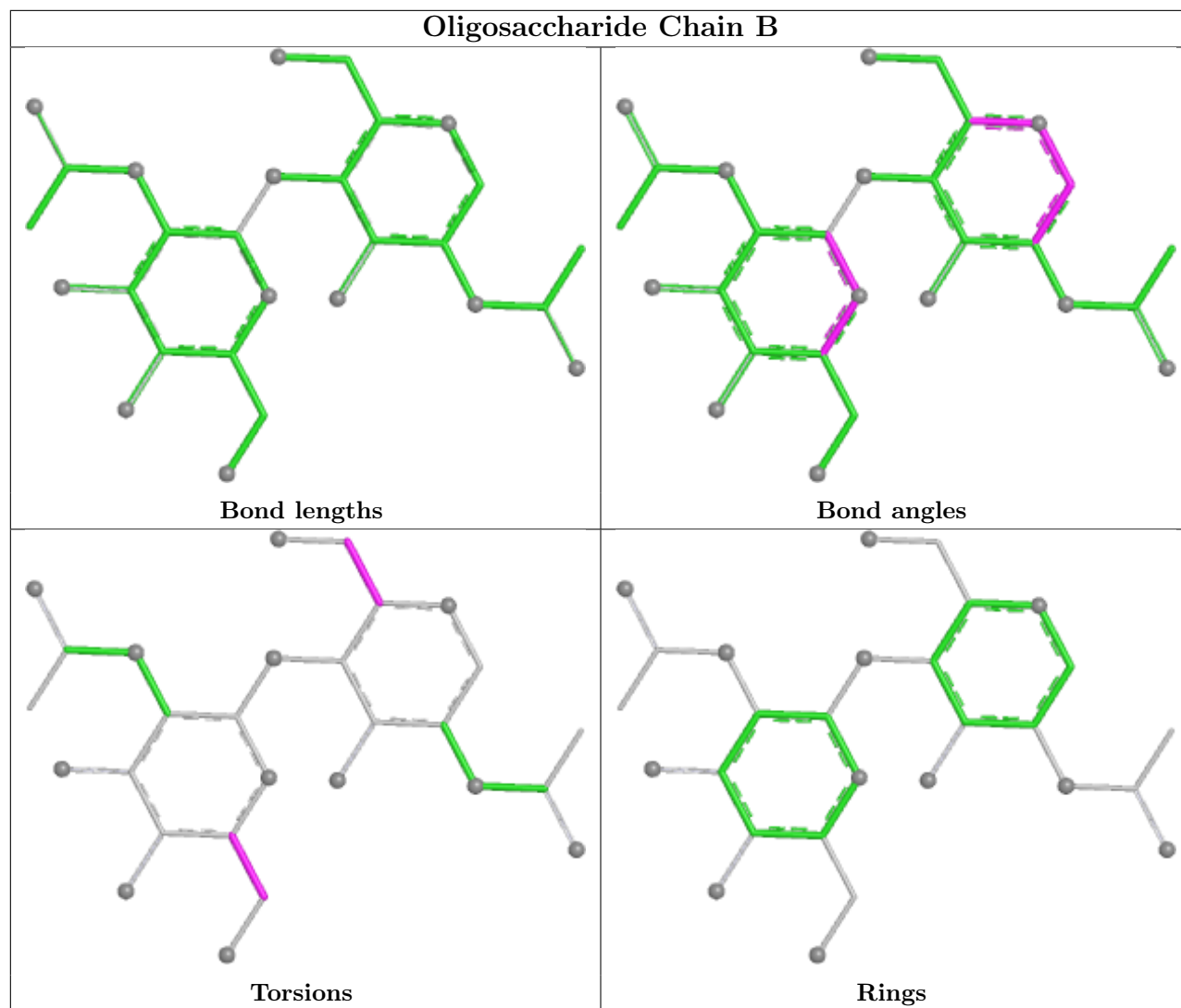
Mol	Chain	Res	Type	Atoms
2	B	1	NAG	C4-C5-C6-O6
2	B	1	NAG	O5-C5-C6-O6
3	C	2	NAG	C4-C5-C6-O6
2	B	2	NAG	O5-C5-C6-O6
3	C	2	NAG	O5-C5-C6-O6
2	B	2	NAG	C4-C5-C6-O6
3	C	3	BMA	O5-C5-C6-O6
3	C	1	NAG	C4-C5-C6-O6
3	C	1	NAG	C8-C7-N2-C2

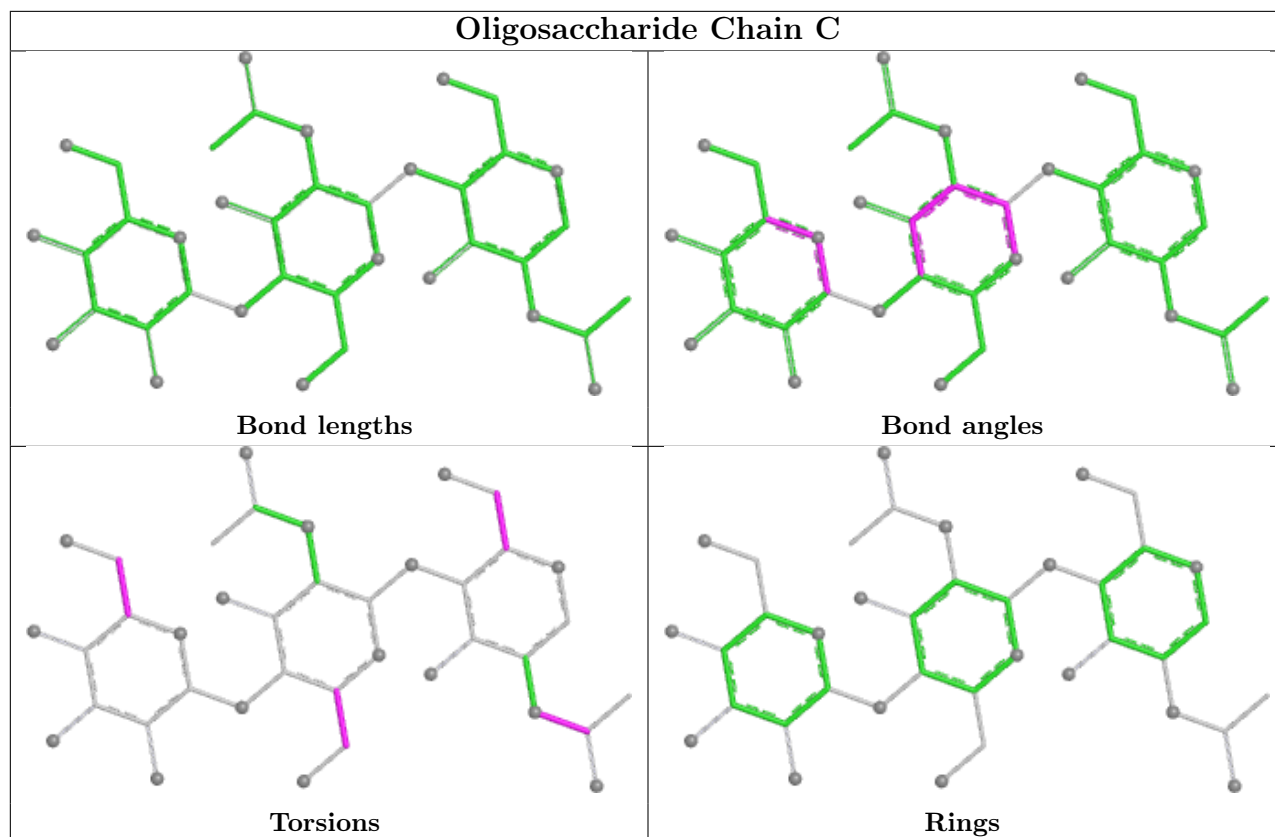
There are no ring outliers.

1 monomer is involved in 1 short contact:

Mol	Chain	Res	Type	Clashes	Symm-Clashes
2	B	1	NAG	1	0

The following is a two-dimensional graphical depiction of Mogul quality analysis of bond lengths, bond angles, torsion angles, and ring geometry for oligosaccharide.





5.6 Ligand geometry [i](#)

Of 9 ligands modelled in this entry, 6 are monoatomic - leaving 3 for Mogul analysis.

In the following table, the Counts columns list the number of bonds (or angles) for which Mogul statistics could be retrieved, the number of bonds (or angles) that are observed in the model and the number of bonds (or angles) that are defined in the Chemical Component Dictionary. The Link column lists molecule types, if any, to which the group is linked. The Z score for a bond length (or angle) is the number of standard deviations the observed value is removed from the expected value. A bond length (or angle) with $|Z| > 2$ is considered an outlier worth inspection. RMSZ is the root-mean-square of all Z scores of the bond lengths (or angles).

Mol	Type	Chain	Res	Link	Bond lengths			Bond angles		
					Counts	RMSZ	$\# Z > 2$	Counts	RMSZ	$\# Z > 2$
4	NAG	A	1	1	14,14,15	0.49	0	17,19,21	0.69	0
7	ACT	A	607	-	3,3,3	0.85	0	3,3,3	1.06	0
4	NAG	A	2	1	14,14,15	0.51	0	17,19,21	1.29	1 (5%)

In the following table, the Chirals column lists the number of chiral outliers, the number of chiral centers analysed, the number of these observed in the model and the number defined in the Chemical Component Dictionary. Similar counts are reported in the Torsion and Rings columns. '-' means no outliers of that kind were identified.

Mol	Type	Chain	Res	Link	Chirals	Torsions	Rings
4	NAG	A	1	1	-	2/6/23/26	0/1/1/1
4	NAG	A	2	1	-	4/6/23/26	0/1/1/1

There are no bond length outliers.

All (1) bond angle outliers are listed below:

Mol	Chain	Res	Type	Atoms	Z	Observed(°)	Ideal(°)
4	A	2	NAG	C1-O5-C5	3.71	117.16	112.19

There are no chirality outliers.

All (6) torsion outliers are listed below:

Mol	Chain	Res	Type	Atoms
4	A	2	NAG	O5-C5-C6-O6
4	A	2	NAG	C4-C5-C6-O6
4	A	2	NAG	C8-C7-N2-C2
4	A	1	NAG	O5-C5-C6-O6
4	A	2	NAG	O7-C7-N2-C2
4	A	1	NAG	C4-C5-C6-O6

There are no ring outliers.

1 monomer is involved in 1 short contact:

Mol	Chain	Res	Type	Clashes	Symm-Clashes
7	A	607	ACT	1	0

5.7 Other polymers [i](#)

There are no such residues in this entry.

5.8 Polymer linkage issues [i](#)

There are no chain breaks in this entry.

6 Fit of model and data [i](#)

6.1 Protein, DNA and RNA chains [i](#)

In the following table, the column labelled ‘#RSRZ> 2’ contains the number (and percentage) of RSRZ outliers, followed by percent RSRZ outliers for the chain as percentile scores relative to all X-ray entries and entries of similar resolution. The OWAB column contains the minimum, median, 95th percentile and maximum values of the occupancy-weighted average B-factor per residue. The column labelled ‘Q< 0.9’ lists the number of (and percentage) of residues with an average occupancy less than 0.9.

Mol	Chain	Analysed	<RSRZ>	#RSRZ>2	OWAB(Å ²)	Q<0.9
1	A	705/725 (97%)	0.18	43 (6%) 27 26	13, 26, 38, 51	8 (1%)

All (43) RSRZ outliers are listed below:

Mol	Chain	Res	Type	RSRZ
1	A	1964	PHE	5.6
1	A	2422	CYS	4.1
1	A	1986	SER	3.6
1	A	2139	GLY	3.5
1	A	2421	GLU	3.4
1	A	2427	LEU	3.2
1	A	2136	MET	3.2
1	A	2137	CYS	3.0
1	A	2132	GLN	3.0
1	A	2155	TYR	2.9
1	A	2423	SER	2.9
1	A	2166	ASN	2.7
1	A	2018	GLU	2.7
1	A	1990	ALA	2.7
1	A	2133	CYS	2.7
1	A	1987	SER	2.7
1	A	2159	THR	2.7
1	A	2420	VAL	2.5
1	A	1989	GLY	2.5
1	A	2138	TYR	2.5
1	A	2299	GLU	2.4
1	A	2181	ASP	2.4
1	A	2463	ALA	2.4
1	A	2100	LEU	2.3
1	A	2428	GLN	2.3
1	A	2154	GLY	2.3
1	A	2141	GLY	2.3

Continued on next page...

Continued from previous page...

Mol	Chain	Res	Type	RSRZ
1	A	2140	HIS	2.3
1	A	2414	ASP	2.2
1	A	2101[A]	CYS	2.2
1	A	2146	GLY	2.2
1	A	2486	CYS	2.2
1	A	2144	ILE	2.2
1	A	2544	CYS	2.2
1	A	2143	CYS	2.1
1	A	2631	ASP	2.1
1	A	2149	CYS	2.1
1	A	2415	CYS	2.1
1	A	1988	LYS	2.1
1	A	2064	SER	2.1
1	A	2142	SER	2.1
1	A	1968	GLU	2.0
1	A	2529	ASN	2.0

6.2 Non-standard residues in protein, DNA, RNA chains [i](#)

There are no non-standard protein/DNA/RNA residues in this entry.

6.3 Carbohydrates [i](#)

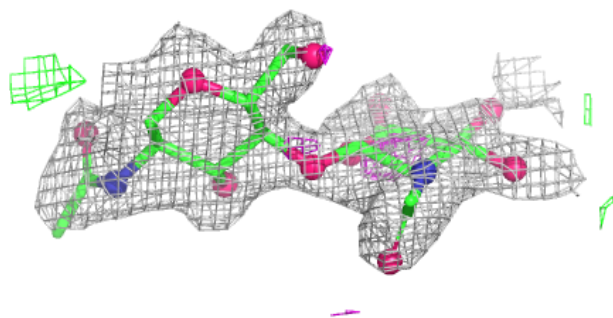
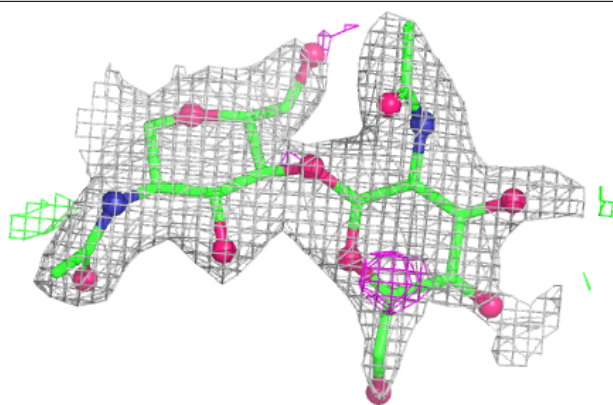
In the following table, the Atoms column lists the number of modelled atoms in the group and the number defined in the chemical component dictionary. The B-factors column lists the minimum, median, 95th percentile and maximum values of B factors of atoms in the group. The column labelled 'Q< 0.9' lists the number of atoms with occupancy less than 0.9.

Mol	Type	Chain	Res	Atoms	RSCC	RSR	B-factors(Å ²)	Q<0.9
3	BMA	C	3	11/12	0.55	0.17	65,66,67,68	0
2	NAG	B	2	14/15	0.69	0.16	55,57,58,59	0
3	NAG	C	1	14/15	0.73	0.14	47,52,53,56	0
3	NAG	C	2	14/15	0.77	0.12	59,61,62,64	0
2	NAG	B	1	14/15	0.86	0.12	39,45,47,51	0

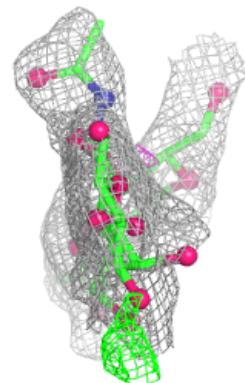
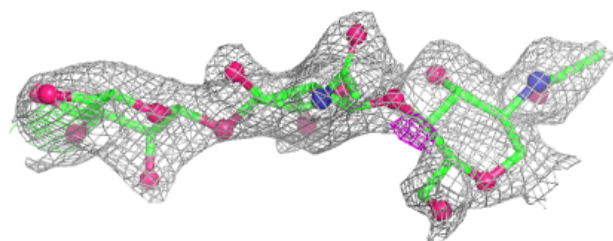
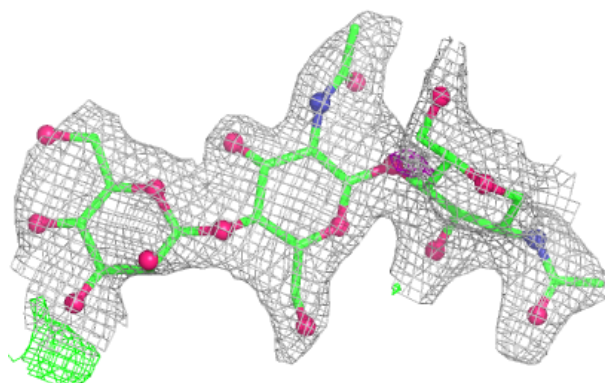
The following is a graphical depiction of the model fit to experimental electron density for oligosaccharide. Each fit is shown from different orientation to approximate a three-dimensional view.

Electron density around Chain B:

$2mF_o-DF_c$ (at 0.7 rmsd) in gray
 mF_o-DF_c (at 3 rmsd) in purple (negative)
and green (positive)

**Electron density around Chain C:**

$2mF_o-DF_c$ (at 0.7 rmsd) in gray
 mF_o-DF_c (at 3 rmsd) in purple (negative)
and green (positive)



6.4 Ligands [i](#)

In the following table, the Atoms column lists the number of modelled atoms in the group and the number defined in the chemical component dictionary. The B-factors column lists the minimum, median, 95th percentile and maximum values of B factors of atoms in the group. The column labelled 'Q<0.9' lists the number of atoms with occupancy less than 0.9.

Mol	Type	Chain	Res	Atoms	RSCC	RSR	B-factors(Å ²)	Q<0.9
4	NAG	A	2	14/15	0.61	0.17	51,56,58,59	0
4	NAG	A	1	14/15	0.72	0.14	51,55,57,58	0
7	ACT	A	607	4/4	0.73	0.25	43,43,43,44	0
5	CA	A	602	1/1	0.99	0.15	24,24,24,24	0
5	CA	A	604	1/1	0.99	0.11	21,21,21,21	0
5	CA	A	605	1/1	0.99	0.07	24,24,24,24	0
6	ZN	A	603	1/1	0.99	0.11	34,34,34,34	0
6	ZN	A	606	1/1	0.99	0.10	25,25,25,25	0
5	CA	A	601	1/1	0.99	0.07	26,26,26,26	0

6.5 Other polymers [i](#)

There are no such residues in this entry.