



wwPDB X-ray Structure Validation Summary Report ⓘ

Mar 8, 2026 – 04:53 PM UTC

PDB ID : 3E6V / pdb_00003e6v
Title : X-ray structure of human arginase I-D183N mutant: the complex with ABH
Authors : Di Costanzo, L.; Christianson, D.W.
Deposited on : 2008-08-16
Resolution : 1.72 Å(reported)

This is a wwPDB X-ray Structure Validation Summary Report for a publicly released PDB entry.

We welcome your comments at validation@mail.wwpdb.org

A user guide is available at

<https://www.wwpdb.org/validation/2017/XrayValidationReportHelp>

with specific help available everywhere you see the ⓘ symbol.

The types of validation reports are described at

<http://www.wwpdb.org/validation/2017/FAQs#types>.

The following versions of software and data (see [references ⓘ](#)) were used in the production of this report:

MolProbity : 4-5-2 with Phenix2.0
Mogul : 2022.3.0, CSD as543be (2022)
Xtrriage (Phenix) : 2.0
EDS : 3.0
Percentile statistics : 20250101.v01 (using entries in the PDB archive January 1st 2025)
CCP4 : 9.0.010 (Gargrove)
Density-Fitness : 1.0.12
Ideal geometry (proteins) : Engh & Huber (2001)
Ideal geometry (DNA, RNA) : Parkinson et al. (1996)
Validation Pipeline (wwPDB-VP) : 2.49

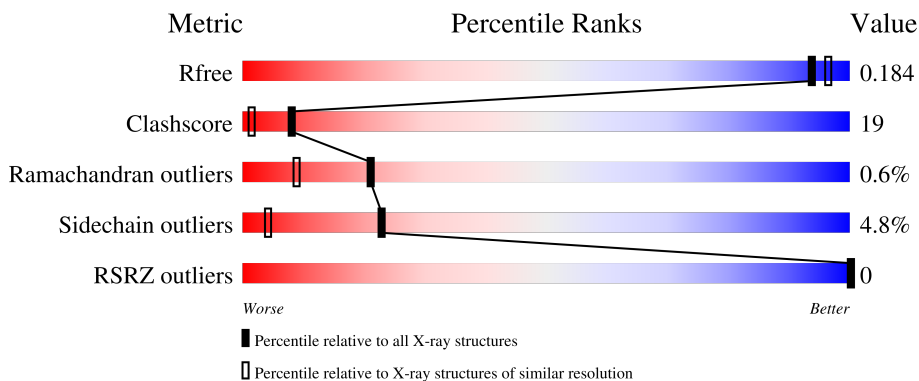
1 Overall quality at a glance

The following experimental techniques were used to determine the structure:

X-RAY DIFFRACTION

The reported resolution of this entry is 1.72 Å.

Percentile scores (ranging between 0-100) for global validation metrics of the entry are shown in the following graphic. The table shows the number of entries on which the scores are based.



Metric	Whole archive (#Entries)	Similar resolution (#Entries, resolution range(Å))
R_{free}	180053	1039 (1.72-1.72)
Clashscore	190562	1049 (1.72-1.72)
Ramachandran outliers	187476	1041 (1.72-1.72)
Sidechain outliers	187428	1041 (1.72-1.72)
RSRZ outliers	180081	1039 (1.72-1.72)

The table below summarises the geometric issues observed across the polymeric chains and their fit to the electron density. The red, orange, yellow and green segments of the lower bar indicate the fraction of residues that contain outliers for ≥ 3 , 2, 1 and 0 types of geometric quality criteria respectively. A grey segment represents the fraction of residues that are not modelled. The numeric value for each fraction is indicated below the corresponding segment, with a dot representing fractions $\leq 5\%$. The upper red bar (where present) indicates the fraction of residues that have poor fit to the electron density. The numeric value is given above the bar.

Mol	Chain	Length	Quality of chain
1	A	322	 66% 28% . . .
1	B	322	 59% 34% 5% .

2 Entry composition [i](#)

There are 4 unique types of molecules in this entry. The entry contains 5154 atoms, of which 0 are hydrogens and 0 are deuteriums.

In the tables below, the ZeroOcc column contains the number of atoms modelled with zero occupancy, the AltConf column contains the number of residues with at least one atom in alternate conformation and the Trace column contains the number of residues modelled with at most 2 atoms.

- Molecule 1 is a protein called Arginase-1.

Mol	Chain	Residues	Atoms					ZeroOcc	AltConf	Trace
			Total	C	N	O	S			
1	A	314	2389	1523	408	452	6	0	0	0
1	B	314	2389	1523	408	452	6	0	0	0

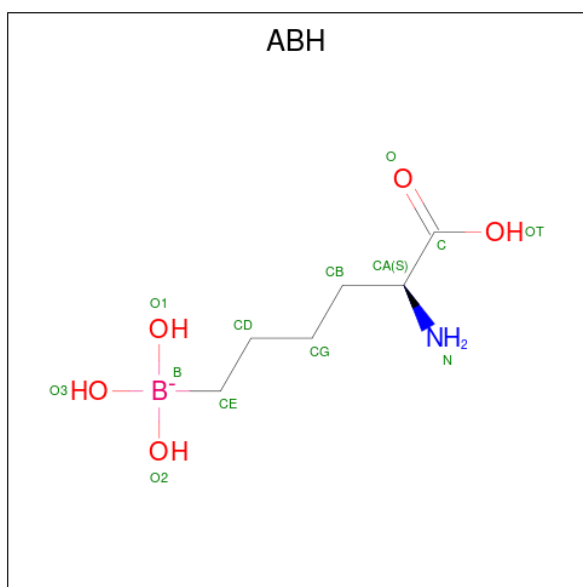
There are 2 discrepancies between the modelled and reference sequences:

Chain	Residue	Modelled	Actual	Comment	Reference
A	183	ASN	ASP	engineered mutation	UNP P05089
B	183	ASN	ASP	engineered mutation	UNP P05089

- Molecule 2 is MANGANESE (II) ION (CCD ID: MN) (formula: Mn).

Mol	Chain	Residues	Atoms		ZeroOcc	AltConf
			Total	Mn		
2	A	2	2	2	0	0
2	B	2	2	2	0	0

- Molecule 3 is 2(S)-AMINO-6-BORONOHEXANOIC ACID (CCD ID: ABH) (formula: C₆H₁₅BNO₅).



Mol	Chain	Residues	Atoms					ZeroOcc	AltConf
			Total	B	C	N	O		
3	A	1	13	1	6	1	5	0	0
3	B	1	13	1	6	1	5	0	0

- Molecule 4 is water.

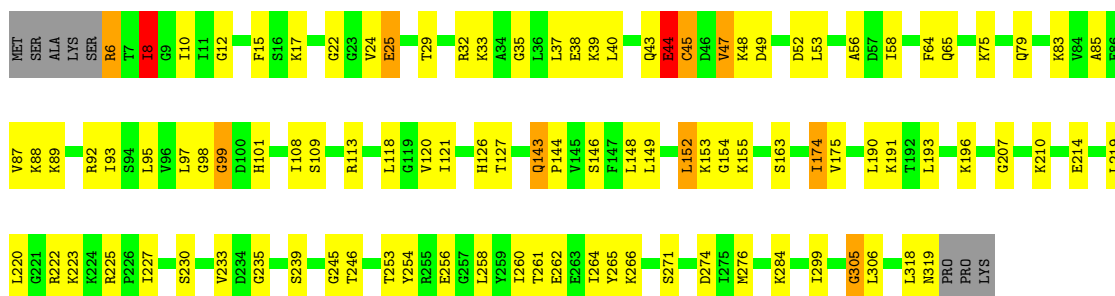
Mol	Chain	Residues	Atoms		ZeroOcc	AltConf
			Total	O		
4	A	186	186	186	0	0
4	B	160	160	160	0	0

3 Residue-property plots [i](#)

These plots are drawn for all protein, RNA, DNA and oligosaccharide chains in the entry. The first graphic for a chain summarises the proportions of the various outlier classes displayed in the second graphic. The second graphic shows the sequence view annotated by issues in geometry and electron density. Residues are color-coded according to the number of geometric quality criteria for which they contain at least one outlier: green = 0, yellow = 1, orange = 2 and red = 3 or more. A red dot above a residue indicates a poor fit to the electron density ($RSRZ > 2$). Stretches of 2 or more consecutive residues without any outlier are shown as a green connector. Residues present in the sample, but not in the model, are shown in grey.

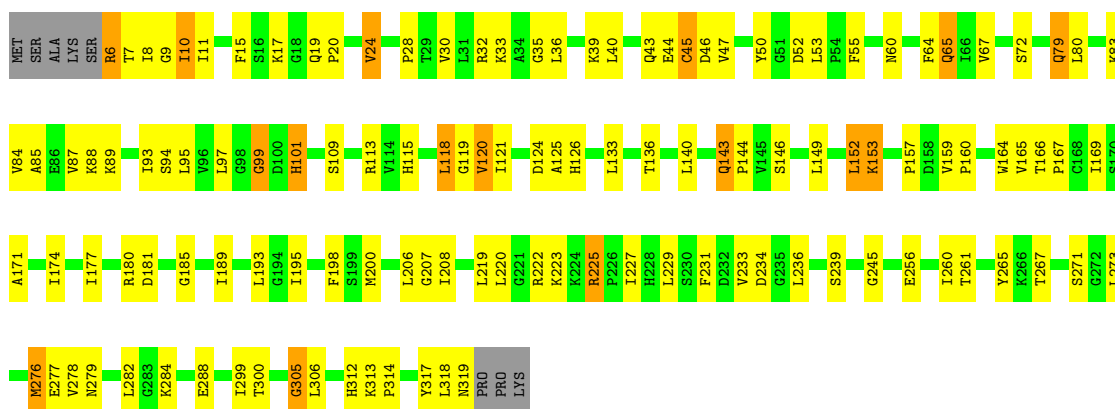
• Molecule 1: Arginase-1

Chain A:  66% 28%



• Molecule 1: Arginase-1

Chain B:  59% 34% 5%



4 Data and refinement statistics i

Property	Value	Source
Space group	P 3	Depositor
Cell constants a, b, c, α , β , γ	91.04Å 91.04Å 69.77Å 90.00° 90.00° 120.00°	Depositor
Resolution (Å)	30.00 – 1.72 30.00 – 1.72	Depositor EDS
% Data completeness (in resolution range)	(Not available) (30.00-1.72) 96.7 (30.00-1.72)	Depositor EDS
R_{merge}	0.06	Depositor
R_{sym}	(Not available)	Depositor
$\langle I/\sigma(I) \rangle$ ¹	2.15 (at 1.72Å)	Xtrriage
Refinement program	CNS	Depositor
R, R_{free}	0.219 , 0.232 0.186 , 0.184	Depositor DCC
R_{free} test set	3350 reflections (5.05%)	wwPDB-VP
Wilson B-factor (Å ²)	17.7	Xtrriage
Anisotropy	0.112	Xtrriage
Bulk solvent k_{sol} (e/Å ³), B_{sol} (Å ²)	0.35 , 25.8	EDS
L-test for twinning ²	$\langle L \rangle = 0.41$, $\langle L^2 \rangle = 0.24$	Xtrriage
Estimated twinning fraction	0.458 for -h,-k,l 0.125 for h,-h-k,-l 0.125 for -k,-h,-l	Xtrriage
F_o, F_c correlation	0.97	EDS
Total number of atoms	5154	wwPDB-VP
Average B, all atoms (Å ²)	18.0	wwPDB-VP

Xtrriage's analysis on translational NCS is as follows: *The largest off-origin peak in the Patterson function is 4.85% of the height of the origin peak. No significant pseudotranslation is detected.*

¹Intensities estimated from amplitudes.

²Theoretical values of $\langle |L| \rangle$, $\langle L^2 \rangle$ for acentric reflections are 0.5, 0.333 respectively for untwinned datasets, and 0.375, 0.2 for perfectly twinned datasets.

5 Model quality [i](#)

5.1 Standard geometry [i](#)

Bond lengths and bond angles in the following residue types are not validated in this section: MN, ABH

The Z score for a bond length (or angle) is the number of standard deviations the observed value is removed from the expected value. A bond length (or angle) with $|Z| > 5$ is considered an outlier worth inspection. RMSZ is the root-mean-square of all Z scores of the bond lengths (or angles).

Mol	Chain	Bond lengths		Bond angles	
		RMSZ	# Z >5	RMSZ	# Z >5
1	A	0.45	0/2439	1.03	17/3310 (0.5%)
1	B	0.45	0/2439	1.02	18/3310 (0.5%)
All	All	0.45	0/4878	1.02	35/6620 (0.5%)

There are no bond length outliers.

The worst 5 of 35 bond angle outliers are listed below:

Mol	Chain	Res	Type	Atoms	Z	Observed(°)	Ideal(°)
1	A	305	GLY	N-CA-C	8.91	123.11	113.58
1	B	305	GLY	N-CA-C	8.63	122.81	113.58
1	B	207	GLY	N-CA-C	-8.40	100.92	112.18
1	A	98	GLY	N-CA-C	8.24	124.18	112.81
1	A	47	VAL	N-CA-C	8.22	119.68	108.17

There are no chirality outliers.

There are no planarity outliers.

5.2 Too-close contacts [i](#)

In the following table, the Non-H and H(model) columns list the number of non-hydrogen atoms and hydrogen atoms in the chain respectively. The H(added) column lists the number of hydrogen atoms added and optimized by MolProbity. The Clashes column lists the number of clashes within the asymmetric unit, whereas Symm-Clashes lists symmetry-related clashes.

Mol	Chain	Non-H	H(model)	H(added)	Clashes	Symm-Clashes
1	A	2389	0	2435	83	0
1	B	2389	0	2435	107	0
2	A	2	0	0	0	0
2	B	2	0	0	0	0

Continued on next page...

Continued from previous page...

Mol	Chain	Non-H	H(model)	H(added)	Clashes	Symm-Clashes
3	A	13	0	12	0	0
3	B	13	0	13	0	0
4	A	186	0	0	13	0
4	B	160	0	0	6	0
All	All	5154	0	4895	189	0

The all-atom clashscore is defined as the number of clashes found per 1000 atoms (including hydrogen atoms). The all-atom clashscore for this structure is 19.

The worst 5 of 189 close contacts within the same asymmetric unit are listed below, sorted by their clash magnitude.

Atom-1	Atom-2	Interatomic distance (Å)	Clash overlap (Å)
1:B:236:LEU:HD11	1:B:299:ILE:HD11	1.45	0.94
1:B:53:LEU:HD21	1:B:83:LYS:HG3	1.48	0.92
1:B:222:ARG:HH11	1:B:222:ARG:HA	1.41	0.83
1:B:15:PHE:CZ	1:B:17:LYS:HB2	2.14	0.82
1:A:6:ARG:HH11	1:A:6:ARG:HG3	1.45	0.82

There are no symmetry-related clashes.

5.3 Torsion angles [i](#)

5.3.1 Protein backbone [i](#)

In the following table, the Percentiles column shows the percent Ramachandran outliers of the chain as a percentile score with respect to all X-ray entries followed by that with respect to entries of similar resolution.

The Analysed column shows the number of residues for which the backbone conformation was analysed, and the total number of residues.

Mol	Chain	Analysed	Favoured	Allowed	Outliers	Percentiles	
1	A	312/322 (97%)	298 (96%)	12 (4%)	2 (1%)	21	9
1	B	312/322 (97%)	293 (94%)	17 (5%)	2 (1%)	21	9
All	All	624/644 (97%)	591 (95%)	29 (5%)	4 (1%)	21	9

All (4) Ramachandran outliers are listed below:

Mol	Chain	Res	Type
1	A	44	GLU
1	A	143	GLN
1	B	143	GLN
1	B	65	GLN

5.3.2 Protein sidechains [i](#)

In the following table, the Percentiles column shows the percent sidechain outliers of the chain as a percentile score with respect to all X-ray entries followed by that with respect to entries of similar resolution.

The Analysed column shows the number of residues for which the sidechain conformation was analysed, and the total number of residues.

Mol	Chain	Analysed	Rotameric	Outliers	Percentiles	
1	A	263/270 (97%)	250 (95%)	13 (5%)	22	4
1	B	263/270 (97%)	251 (95%)	12 (5%)	24	5
All	All	526/540 (97%)	501 (95%)	25 (5%)	23	4

5 of 25 residues with a non-rotameric sidechain are listed below:

Mol	Chain	Res	Type
1	B	10	ILE
1	B	79	GLN
1	B	306	LEU
1	B	44	GLU
1	B	95	LEU

Sometimes sidechains can be flipped to improve hydrogen bonding and reduce clashes. 5 of 10 such sidechains are listed below:

Mol	Chain	Res	Type
1	B	79	GLN
1	B	90	ASN
1	B	115	HIS
1	A	143	GLN
1	A	183	ASN

5.3.3 RNA [i](#)

There are no RNA molecules in this entry.

5.4 Non-standard residues in protein, DNA, RNA chains [i](#)

There are no non-standard protein/DNA/RNA residues in this entry.

5.5 Carbohydrates [i](#)

There are no oligosaccharides in this entry.

5.6 Ligand geometry [i](#)

Of 6 ligands modelled in this entry, 4 are monoatomic - leaving 2 for Mogul analysis.

In the following table, the Counts columns list the number of bonds (or angles) for which Mogul statistics could be retrieved, the number of bonds (or angles) that are observed in the model and the number of bonds (or angles) that are defined in the Chemical Component Dictionary. The Link column lists molecule types, if any, to which the group is linked. The Z score for a bond length (or angle) is the number of standard deviations the observed value is removed from the expected value. A bond length (or angle) with $|Z| > 2$ is considered an outlier worth inspection. RMSZ is the root-mean-square of all Z scores of the bond lengths (or angles).

Mol	Type	Chain	Res	Link	Bond lengths			Bond angles		
					Counts	RMSZ	$\# Z > 2$	Counts	RMSZ	$\# Z > 2$
3	ABH	B	555	2	11,12,12	0.86	0	10,16,16	0.57	0
3	ABH	A	552	2	11,12,12	1.12	0	10,16,16	0.67	0

In the following table, the Chirals column lists the number of chiral outliers, the number of chiral centers analysed, the number of these observed in the model and the number defined in the Chemical Component Dictionary. Similar counts are reported in the Torsion and Rings columns. '-' means no outliers of that kind were identified.

Mol	Type	Chain	Res	Link	Chirals	Torsions	Rings
3	ABH	B	555	2	-	1/9/12/12	-
3	ABH	A	552	2	-	2/9/12/12	-

There are no bond length outliers.

There are no bond angle outliers.

There are no chirality outliers.

All (3) torsion outliers are listed below:

Mol	Chain	Res	Type	Atoms
3	A	552	ABH	C-CA-CB-CG
3	A	552	ABH	O-C-CA-N

Continued on next page...

Continued from previous page...

Mol	Chain	Res	Type	Atoms
3	B	555	ABH	O-C-CA-N

There are no ring outliers.

No monomer is involved in short contacts.

5.7 Other polymers [i](#)

There are no such residues in this entry.

5.8 Polymer linkage issues [i](#)

There are no chain breaks in this entry.

6 Fit of model and data [i](#)

6.1 Protein, DNA and RNA chains [i](#)

In the following table, the column labelled ‘#RSRZ> 2’ contains the number (and percentage) of RSRZ outliers, followed by percent RSRZ outliers for the chain as percentile scores relative to all X-ray entries and entries of similar resolution. The OWAB column contains the minimum, median, 95th percentile and maximum values of the occupancy-weighted average B-factor per residue. The column labelled ‘Q< 0.9’ lists the number of (and percentage) of residues with an average occupancy less than 0.9.

Mol	Chain	Analysed	<RSRZ>	#RSRZ>2	OWAB(Å ²)	Q<0.9
1	A	314/322 (97%)	-1.42	0 100 100	7, 15, 28, 50	0
1	B	314/322 (97%)	-1.36	0 100 100	8, 19, 33, 44	0
All	All	628/644 (97%)	-1.39	0 100 100	7, 17, 31, 50	0

There are no RSRZ outliers to report.

6.2 Non-standard residues in protein, DNA, RNA chains [i](#)

There are no non-standard protein/DNA/RNA residues in this entry.

6.3 Carbohydrates [i](#)

There are no oligosaccharides in this entry.

6.4 Ligands [i](#)

In the following table, the Atoms column lists the number of modelled atoms in the group and the number defined in the chemical component dictionary. The B-factors column lists the minimum, median, 95th percentile and maximum values of B factors of atoms in the group. The column labelled ‘Q< 0.9’ lists the number of atoms with occupancy less than 0.9.

Mol	Type	Chain	Res	Atoms	RSCC	RSR	B-factors(Å ²)	Q<0.9
3	ABH	A	552	13/13	0.99	0.02	9,13,15,16	0
3	ABH	B	555	13/13	0.99	0.03	20,20,21,21	0
2	MN	B	514	1/1	1.00	0.01	17,17,17,17	0
2	MN	B	515	1/1	1.00	0.01	17,17,17,17	0
2	MN	A	514	1/1	1.00	0.00	11,11,11,11	0
2	MN	A	515	1/1	1.00	0.01	11,11,11,11	0

6.5 Other polymers [i](#)

There are no such residues in this entry.