



wwPDB X-ray Structure Validation Summary Report ⓘ

Mar 5, 2026 – 07:27 PM UTC

PDB ID : 5E9C / pdb_00005e9c
Title : Crystal structure of human heparanase in complex with heparin tetrasaccharide dp4
Authors : Wu, L.; Davies, G.J.
Deposited on : 2015-10-15
Resolution : 1.73 Å(reported)

This is a wwPDB X-ray Structure Validation Summary Report for a publicly released PDB entry.

We welcome your comments at validation@mail.wwpdb.org

A user guide is available at

<https://www.wwpdb.org/validation/2017/XrayValidationReportHelp>

with specific help available everywhere you see the ⓘ symbol.

The types of validation reports are described at

<http://www.wwpdb.org/validation/2017/FAQs#types>.

The following versions of software and data (see [references ⓘ](#)) were used in the production of this report:

MolProbity : 4-5-2 with Phenix2.0
Mogul : 2022.3.0, CSD as543be (2022)
Xtriage (Phenix) : 2.0
EDS : 3.0
Percentile statistics : 20250101.v01 (using entries in the PDB archive January 1st 2025)
CCP4 : 9.0.010 (Gargrove)
Density-Fitness : 1.0.12
Ideal geometry (proteins) : Engh & Huber (2001)
Ideal geometry (DNA, RNA) : Parkinson et al. (1996)
Validation Pipeline (wwPDB-VP) : 2.49

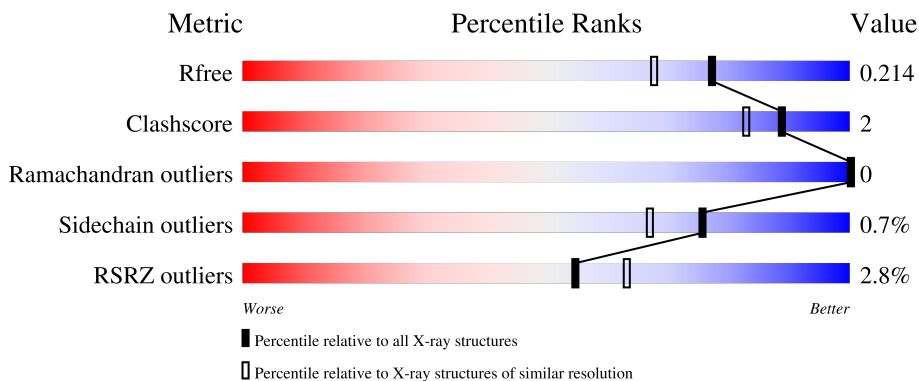
1 Overall quality at a glance

The following experimental techniques were used to determine the structure:

X-RAY DIFFRACTION

The reported resolution of this entry is 1.73 Å.

Percentile scores (ranging between 0-100) for global validation metrics of the entry are shown in the following graphic. The table shows the number of entries on which the scores are based.



Metric	Whole archive (#Entries)	Similar resolution (#Entries, resolution range(Å))
R_{free}	180053	1187 (1.74-1.74)
Clashscore	190562	1207 (1.74-1.74)
Ramachandran outliers	187476	1200 (1.74-1.74)
Sidechain outliers	187428	1200 (1.74-1.74)
RSRZ outliers	180081	1188 (1.74-1.74)

The table below summarises the geometric issues observed across the polymeric chains and their fit to the electron density. The red, orange, yellow and green segments of the lower bar indicate the fraction of residues that contain outliers for ≥ 3 , 2, 1 and 0 types of geometric quality criteria respectively. A grey segment represents the fraction of residues that are not modelled. The numeric value for each fraction is indicated below the corresponding segment, with a dot representing fractions $\leq 5\%$. The upper red bar (where present) indicates the fraction of residues that have poor fit to the electron density. The numeric value is given above the bar.

Mol	Chain	Length	Quality of chain
1	A	389	 3% 96%
2	B	77	 3% 88% 8%
3	C	4	 25% 75%

2 Entry composition i

There are 7 unique types of molecules in this entry. The entry contains 3998 atoms, of which 0 are hydrogens and 0 are deuteriums.

In the tables below, the ZeroOcc column contains the number of atoms modelled with zero occupancy, the AltConf column contains the number of residues with at least one atom in alternate conformation and the Trace column contains the number of residues modelled with at most 2 atoms.

- Molecule 1 is a protein called Heparanase.

Mol	Chain	Residues	Atoms					ZeroOcc	AltConf	Trace
			Total	C	N	O	S			
1	A	385	3074	1984	524	554	12	0	2	0

There are 4 discrepancies between the modelled and reference sequences:

Chain	Residue	Modelled	Actual	Comment	Reference
A	155	ASP	-	expression tag	UNP Q9Y251
A	156	PRO	-	expression tag	UNP Q9Y251
A	157	GLY	-	expression tag	UNP Q9Y251
A	307	ARG	LYS	conflict	UNP Q9Y251

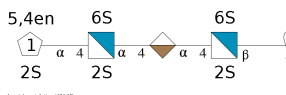
- Molecule 2 is a protein called Heparanase.

Mol	Chain	Residues	Atoms				ZeroOcc	AltConf	Trace
			Total	C	N	O			
2	B	74	586	383	95	108	0	0	0

There are 3 discrepancies between the modelled and reference sequences:

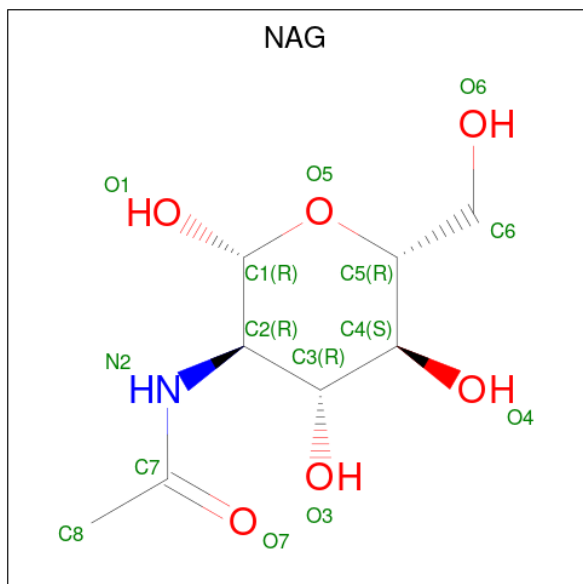
Chain	Residue	Modelled	Actual	Comment	Reference
B	33	ASP	-	expression tag	UNP Q9Y251
B	34	PRO	-	expression tag	UNP Q9Y251
B	35	GLY	-	expression tag	UNP Q9Y251

- Molecule 3 is an oligosaccharide called 4-deoxy-2-O-sulfo-alpha-L-threo-hex-4-enopyranuronic acid-(1-4)-2-deoxy-6-O-sulfo-2-(sulfoamino)-alpha-D-glucopyranose-(1-4)-alpha-L-idopyranuronic acid-(1-4)-2-deoxy-6-O-sulfo-2-(sulfoamino)-beta-D-glucopyranose.



Mol	Chain	Residues	Atoms					ZeroOcc	AltConf	Trace
			Total	C	N	O	S			
3	C	4	66	24	2	35	5	0	0	0

- Molecule 4 is 2-acetamido-2-deoxy-beta-D-glucopyranose (CCD ID: NAG) (formula: $C_8H_{15}NO_6$).



Mol	Chain	Residues	Atoms				ZeroOcc	AltConf
			Total	C	N	O		
4	A	1	14	8	1	5	0	0
4	A	1	14	8	1	5	0	0
4	A	1	14	8	1	5	0	0

- Molecule 5 is CHLORIDE ION (CCD ID: CL) (formula: Cl).

Mol	Chain	Residues	Atoms		ZeroOcc	AltConf
			Total	Cl		
5	A	1	1	1	0	0

- Molecule 6 is SULFATE ION (CCD ID: SO4) (formula: O_4S).



Mol	Chain	Residues	Atoms			ZeroOcc	AltConf
6	A	1	Total	O	S	0	0
			5	4	1		

- Molecule 7 is water.

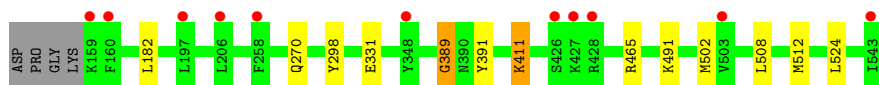
Mol	Chain	Residues	Atoms		ZeroOcc	AltConf
7	A	194	Total	O	0	0
			194	194		
7	B	30	Total	O	0	0
			30	30		

3 Residue-property plots [i](#)


These plots are drawn for all protein, RNA, DNA and oligosaccharide chains in the entry. The first graphic for a chain summarises the proportions of the various outlier classes displayed in the second graphic. The second graphic shows the sequence view annotated by issues in geometry and electron density. Residues are color-coded according to the number of geometric quality criteria for which they contain at least one outlier: green = 0, yellow = 1, orange = 2 and red = 3 or more. A red dot above a residue indicates a poor fit to the electron density ($RSRZ > 2$). Stretches of 2 or more consecutive residues without any outlier are shown as a green connector. Residues present in the sample, but not in the model, are shown in grey.

- Molecule 1: Heparanase

Chain A: 



- Molecule 2: Heparanase

Chain B: 



- Molecule 3: 4-deoxy-2-O-sulfo-alpha-L-threo-hex-4-enopyranuronic acid-(1-4)-2-deoxy-6-O-sulfo-2-(sulfoamino)-alpha-D-glucopyranose-(1-4)-alpha-L-idopyranuronic acid-(1-4)-2-deoxy-6-O-sulfo-2-(sulfoamino)-beta-D-glucopyranose

Chain C: 



4 Data and refinement statistics

Property	Value	Source
Space group	P 1 21 1	Depositor
Cell constants a, b, c, α , β , γ	46.22Å 71.12Å 78.60Å 90.00° 95.23° 90.00°	Depositor
Resolution (Å)	78.27 – 1.73 78.27 – 1.73	Depositor EDS
% Data completeness (in resolution range)	99.0 (78.27-1.73) 99.0 (78.27-1.73)	Depositor EDS
R_{merge}	0.06	Depositor
R_{sym}	(Not available)	Depositor
$\langle I/\sigma(I) \rangle$ ¹	1.56 (at 1.73Å)	Xtrriage
Refinement program	REFMAC 5.8.0131	Depositor
R, R_{free}	0.172 , 0.210 0.181 , 0.214	Depositor DCC
R_{free} test set	2675 reflections (5.04%)	wwPDB-VP
Wilson B-factor (Å ²)	27.8	Xtrriage
Anisotropy	0.433	Xtrriage
Bulk solvent k_{sol} (e/Å ³), B_{sol} (Å ²)	0.32 , 30.6	EDS
L-test for twinning ²	$\langle L \rangle = 0.48$, $\langle L^2 \rangle = 0.31$	Xtrriage
Estimated twinning fraction	No twinning to report.	Xtrriage
F_o, F_c correlation	0.97	EDS
Total number of atoms	3998	wwPDB-VP
Average B, all atoms (Å ²)	36.0	wwPDB-VP

Xtrriage's analysis on translational NCS is as follows: *The largest off-origin peak in the Patterson function is 6.34% of the height of the origin peak. No significant pseudotranslation is detected.*

¹Intensities estimated from amplitudes.

²Theoretical values of $\langle |L| \rangle$, $\langle L^2 \rangle$ for acentric reflections are 0.5, 0.333 respectively for untwinned datasets, and 0.375, 0.2 for perfectly twinned datasets.

5 Model quality [i](#)

5.1 Standard geometry [i](#)

Bond lengths and bond angles in the following residue types are not validated in this section: UAP, 5KV, SO4, IDR, NAG, SGN, CL

The Z score for a bond length (or angle) is the number of standard deviations the observed value is removed from the expected value. A bond length (or angle) with $|Z| > 5$ is considered an outlier worth inspection. RMSZ is the root-mean-square of all Z scores of the bond lengths (or angles).

Mol	Chain	Bond lengths		Bond angles	
		RMSZ	# $ Z > 5$	RMSZ	# $ Z > 5$
1	A	1.02	1/3148 (0.0%)	0.99	3/4257 (0.1%)
2	B	1.01	0/600	0.99	0/814
All	All	1.02	1/3748 (0.0%)	0.99	3/5071 (0.1%)

All (1) bond length outliers are listed below:

Mol	Chain	Res	Type	Atoms	Z	Observed(Å)	Ideal(Å)
1	A	524	LEU	C-O	-5.22	1.20	1.24

All (3) bond angle outliers are listed below:

Mol	Chain	Res	Type	Atoms	Z	Observed(°)	Ideal(°)
1	A	411	LYS	CG-CD-CE	-5.53	98.59	111.30
1	A	389	GLY	CA-C-N	5.31	129.18	120.63
1	A	389	GLY	C-N-CA	5.31	129.18	120.63

There are no chirality outliers.

There are no planarity outliers.

5.2 Too-close contacts [i](#)

In the following table, the Non-H and H(model) columns list the number of non-hydrogen atoms and hydrogen atoms in the chain respectively. The H(added) column lists the number of hydrogen atoms added and optimized by MolProbity. The Clashes column lists the number of clashes within the asymmetric unit, whereas Symm-Clashes lists symmetry-related clashes.

Mol	Chain	Non-H	H(model)	H(added)	Clashes	Symm-Clashes
1	A	3074	0	3103	9	0
2	B	586	0	597	6	0

Continued on next page...

Continued from previous page...

Mol	Chain	Non-H	H(model)	H(added)	Clashes	Symm-Clashes
3	C	66	0	18	3	0
4	A	42	0	39	0	0
5	A	1	0	0	0	0
6	A	5	0	0	0	0
7	A	194	0	0	3	0
7	B	30	0	0	2	0
All	All	3998	0	3757	14	0

The all-atom clashscore is defined as the number of clashes found per 1000 atoms (including hydrogen atoms). The all-atom clashscore for this structure is 2.

The worst 5 of 14 close contacts within the same asymmetric unit are listed below, sorted by their clash magnitude.

Atom-1	Atom-2	Interatomic distance (Å)	Clash overlap (Å)
2:B:46:GLN:HB3	7:B:216:HOH:O	1.70	0.89
2:B:61:ILE:HG12	2:B:92:LEU:HD11	1.75	0.68
1:A:411:LYS:HE3	2:B:87:LEU:O	1.96	0.66
1:A:270:GLN:NE2	3:C:1:5KV:O39	2.35	0.60
1:A:331[B]:GLU:OE1	7:A:701:HOH:O	2.18	0.56

There are no symmetry-related clashes.

5.3 Torsion angles [i](#)

5.3.1 Protein backbone [i](#)

In the following table, the Percentiles column shows the percent Ramachandran outliers of the chain as a percentile score with respect to all X-ray entries followed by that with respect to entries of similar resolution.

The Analysed column shows the number of residues for which the backbone conformation was analysed, and the total number of residues.

Mol	Chain	Analysed	Favoured	Allowed	Outliers	Percentiles	
1	A	385/389 (99%)	378 (98%)	7 (2%)	0	100	100
2	B	72/77 (94%)	72 (100%)	0	0	100	100
All	All	457/466 (98%)	450 (98%)	7 (2%)	0	100	100

There are no Ramachandran outliers to report.

5.3.2 Protein sidechains [i](#)

In the following table, the Percentiles column shows the percent sidechain outliers of the chain as a percentile score with respect to all X-ray entries followed by that with respect to entries of similar resolution.

The Analysed column shows the number of residues for which the sidechain conformation was analysed, and the total number of residues.

Mol	Chain	Analysed	Rotameric	Outliers	Percentiles	
1	A	337/338 (100%)	334 (99%)	3 (1%)	70	59
2	B	66/68 (97%)	66 (100%)	0	100	100
All	All	403/406 (99%)	400 (99%)	3 (1%)	76	67

All (3) residues with a non-rotameric sidechain are listed below:

Mol	Chain	Res	Type
1	A	391	TYR
1	A	465	ARG
1	A	512	MET

Sometimes sidechains can be flipped to improve hydrogen bonding and reduce clashes. All (3) such sidechains are listed below:

Mol	Chain	Res	Type
1	A	250	HIS
1	A	494	GLN
2	B	46	GLN

5.3.3 RNA [i](#)

There are no RNA molecules in this entry.

5.4 Non-standard residues in protein, DNA, RNA chains [i](#)

There are no non-standard protein/DNA/RNA residues in this entry.

5.5 Carbohydrates [i](#)

4 monosaccharides are modelled in this entry.

In the following table, the Counts columns list the number of bonds (or angles) for which Mogul statistics could be retrieved, the number of bonds (or angles) that are observed in the model and

the number of bonds (or angles) that are defined in the Chemical Component Dictionary. The Link column lists molecule types, if any, to which the group is linked. The Z score for a bond length (or angle) is the number of standard deviations the observed value is removed from the expected value. A bond length (or angle) with $|Z| > 2$ is considered an outlier worth inspection. RMSZ is the root-mean-square of all Z scores of the bond lengths (or angles).

Mol	Type	Chain	Res	Link	Bond lengths			Bond angles		
					Counts	RMSZ	# Z > 2	Counts	RMSZ	# Z > 2
3	5KV	C	1	3	20,20,20	2.09	3 (15%)	25,31,31	1.85	5 (20%)
3	IDR	C	2	3	12,12,13	1.26	2 (16%)	14,17,19	2.06	6 (42%)
3	SGN	C	3	3	19,19,20	2.61	4 (21%)	23,29,31	1.43	3 (13%)
3	UAP	C	4	3	15,15,16	2.22	4 (26%)	18,22,24	2.28	5 (27%)

In the following table, the Chirals column lists the number of chiral outliers, the number of chiral centers analysed, the number of these observed in the model and the number defined in the Chemical Component Dictionary. Similar counts are reported in the Torsion and Rings columns. '-' means no outliers of that kind were identified.

Mol	Type	Chain	Res	Link	Chirals	Torsions	Rings
3	5KV	C	1	3	-	0/11/31/31	0/1/1/1
3	IDR	C	2	3	-	0/4/21/24	0/1/1/1
3	SGN	C	3	3	-	1/11/28/31	0/1/1/1
3	UAP	C	4	3	-	4/9/22/25	0/1/1/1

The worst 5 of 13 bond length outliers are listed below:

Mol	Chain	Res	Type	Atoms	Z	Observed(Å)	Ideal(Å)
3	C	3	SGN	O1S-S1	8.87	1.52	1.42
3	C	4	UAP	O5-C5	6.66	1.46	1.37
3	C	1	5KV	O37-S34	5.63	1.48	1.42
3	C	1	5KV	O35-S34	5.56	1.48	1.42
3	C	3	SGN	O2S-S1	4.46	1.47	1.42

The worst 5 of 19 bond angle outliers are listed below:

Mol	Chain	Res	Type	Atoms	Z	Observed(°)	Ideal(°)
3	C	1	5KV	O35-S34-O37	-5.81	107.44	120.36
3	C	4	UAP	O5-C5-C4	-5.43	119.95	124.94
3	C	4	UAP	O5-C5-C6	4.10	119.38	111.85
3	C	4	UAP	C3-C4-C5	-3.82	114.99	121.45
3	C	1	5KV	C1-C2-C3	-3.81	105.35	110.54

There are no chirality outliers.

All (5) torsion outliers are listed below:

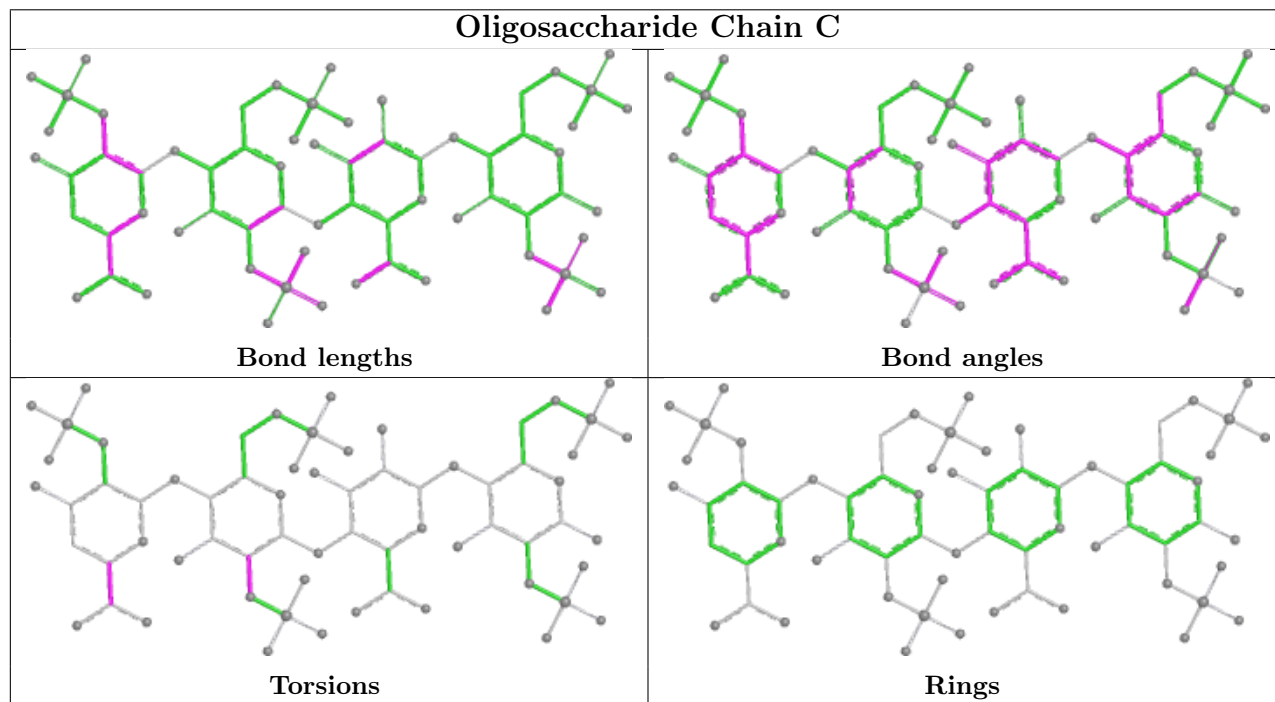
Mol	Chain	Res	Type	Atoms
3	C	4	UAP	C4-C5-C6-O6B
3	C	4	UAP	C4-C5-C6-O6A
3	C	4	UAP	O5-C5-C6-O6B
3	C	4	UAP	O5-C5-C6-O6A
3	C	3	SGN	C3-C2-N2-S1

There are no ring outliers.

3 monomers are involved in 3 short contacts:

Mol	Chain	Res	Type	Clashes	Symm-Clashes
3	C	1	5KV	2	0
3	C	3	SGN	1	0
3	C	2	IDR	1	0

The following is a two-dimensional graphical depiction of Mogul quality analysis of bond lengths, bond angles, torsion angles, and ring geometry for oligosaccharide.



5.6 Ligand geometry [i](#)

Of 5 ligands modelled in this entry, 1 is monoatomic - leaving 4 for Mogul analysis.

In the following table, the Counts columns list the number of bonds (or angles) for which Mogul statistics could be retrieved, the number of bonds (or angles) that are observed in the model and

the number of bonds (or angles) that are defined in the Chemical Component Dictionary. The Link column lists molecule types, if any, to which the group is linked. The Z score for a bond length (or angle) is the number of standard deviations the observed value is removed from the expected value. A bond length (or angle) with $|Z| > 2$ is considered an outlier worth inspection. RMSZ is the root-mean-square of all Z scores of the bond lengths (or angles).

Mol	Type	Chain	Res	Link	Bond lengths			Bond angles		
					Counts	RMSZ	# Z > 2	Counts	RMSZ	# Z > 2
4	NAG	A	602	1	14,14,15	0.70	0	17,19,21	0.95	0
6	SO4	A	605	-	4,4,4	0.57	0	6,6,6	0.30	0
4	NAG	A	603	1	14,14,15	0.76	0	17,19,21	1.94	3 (17%)
4	NAG	A	601	1	14,14,15	0.85	0	17,19,21	1.37	3 (17%)

In the following table, the Chirals column lists the number of chiral outliers, the number of chiral centers analysed, the number of these observed in the model and the number defined in the Chemical Component Dictionary. Similar counts are reported in the Torsion and Rings columns. '-' means no outliers of that kind were identified.

Mol	Type	Chain	Res	Link	Chirals	Torsions	Rings
4	NAG	A	602	1	-	0/6/23/26	0/1/1/1
4	NAG	A	603	1	-	2/6/23/26	0/1/1/1
4	NAG	A	601	1	-	2/6/23/26	0/1/1/1

There are no bond length outliers.

The worst 5 of 6 bond angle outliers are listed below:

Mol	Chain	Res	Type	Atoms	Z	Observed(°)	Ideal(°)
4	A	603	NAG	C1-O5-C5	5.15	119.08	112.19
4	A	603	NAG	C4-C3-C2	-3.58	105.78	111.02
4	A	603	NAG	O3-C3-C2	2.47	114.54	109.40
4	A	601	NAG	C1-O5-C5	2.20	115.13	112.19
4	A	601	NAG	C3-C4-C5	-2.05	106.51	110.23

There are no chirality outliers.

All (4) torsion outliers are listed below:

Mol	Chain	Res	Type	Atoms
4	A	603	NAG	O5-C5-C6-O6
4	A	603	NAG	C4-C5-C6-O6
4	A	601	NAG	C4-C5-C6-O6
4	A	601	NAG	O5-C5-C6-O6

There are no ring outliers.

No monomer is involved in short contacts.

5.7 Other polymers [i](#)

There are no such residues in this entry.

5.8 Polymer linkage issues [i](#)

There are no chain breaks in this entry.

6 Fit of model and data [i](#)

6.1 Protein, DNA and RNA chains [i](#)

In the following table, the column labelled ‘#RSRZ> 2’ contains the number (and percentage) of RSRZ outliers, followed by percent RSRZ outliers for the chain as percentile scores relative to all X-ray entries and entries of similar resolution. The OWAB column contains the minimum, median, 95th percentile and maximum values of the occupancy-weighted average B-factor per residue. The column labelled ‘Q< 0.9’ lists the number of (and percentage) of residues with an average occupancy less than 0.9.

Mol	Chain	Analysed	<RSRZ>	#RSRZ>2	OWAB(Å ²)	Q<0.9
1	A	385/389 (98%)	0.15	11 (2%) 53 62	17, 32, 55, 102	3 (0%)
2	B	74/77 (96%)	0.34	2 (2%) 56 64	21, 35, 54, 97	0
All	All	459/466 (98%)	0.18	13 (2%) 55 63	17, 32, 55, 102	3 (0%)

The worst 5 of 13 RSRZ outliers are listed below:

Mol	Chain	Res	Type	RSRZ
1	A	428	ARG	3.5
1	A	543	ILE	3.5
1	A	427	LYS	2.9
1	A	197	LEU	2.9
2	B	38	VAL	2.8

6.2 Non-standard residues in protein, DNA, RNA chains [i](#)

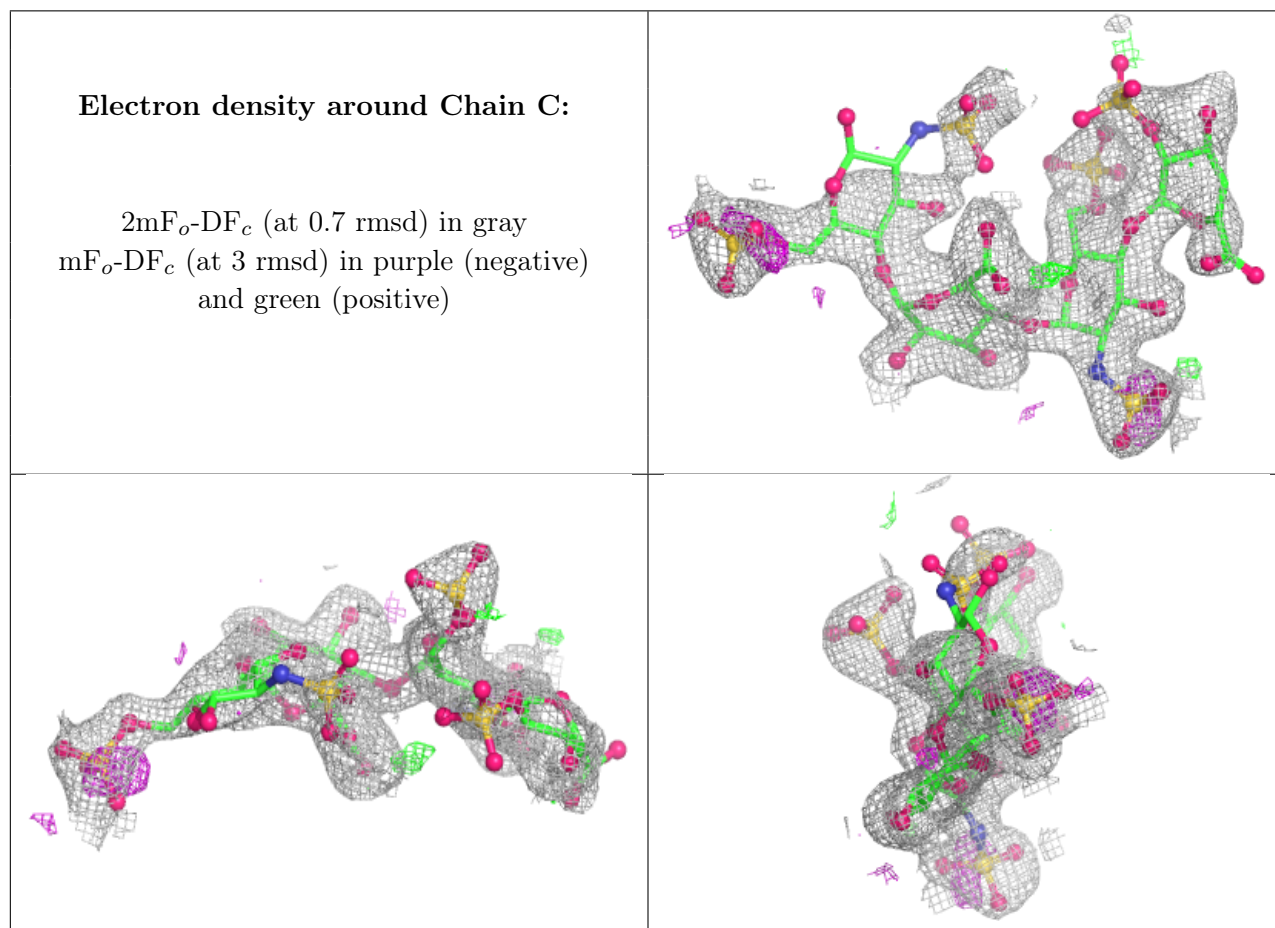
There are no non-standard protein/DNA/RNA residues in this entry.

6.3 Carbohydrates [i](#)

In the following table, the Atoms column lists the number of modelled atoms in the group and the number defined in the chemical component dictionary. The B-factors column lists the minimum, median, 95th percentile and maximum values of B factors of atoms in the group. The column labelled ‘Q< 0.9’ lists the number of atoms with occupancy less than 0.9.

Mol	Type	Chain	Res	Atoms	RSCC	RSR	B-factors(Å ²)	Q<0.9
3	UAP	C	4	15/16	0.70	0.15	57,75,115,117	15
3	5KV	C	1	20/20	0.81	0.16	48,76,117,121	20
3	SGN	C	3	19/20	0.86	0.13	43,53,70,71	19
3	IDR	C	2	12/13	0.91	0.10	30,46,57,58	12

The following is a graphical depiction of the model fit to experimental electron density for oligosaccharide. Each fit is shown from different orientation to approximate a three-dimensional view.



6.4 Ligands [i](#)

In the following table, the Atoms column lists the number of modelled atoms in the group and the number defined in the chemical component dictionary. The B-factors column lists the minimum, median, 95th percentile and maximum values of B factors of atoms in the group. The column labelled 'Q< 0.9' lists the number of atoms with occupancy less than 0.9.

Mol	Type	Chain	Res	Atoms	RSCC	RSR	B-factors(Å ²)	Q<0.9
4	NAG	A	603	14/15	0.75	0.15	64,75,83,85	0
4	NAG	A	601	14/15	0.80	0.11	52,63,71,73	0
5	CL	A	604	1/1	0.81	0.24	67,67,67,67	0
4	NAG	A	602	14/15	0.84	0.11	50,60,65,67	0
6	SO4	A	605	5/5	0.92	0.10	40,57,61,66	0

6.5 Other polymers [i](#)

There are no such residues in this entry.