



# Full wwPDB X-ray Structure Validation Report ⓘ

Mar 10, 2026 – 06:46 PM UTC

PDB ID : 5EA3 / pdb\_00005ea3  
Title : Crystal Structure of Inhibitor JNJ-2408068 in Complex with Prefusion RSV F Glycoprotein  
Authors : Battles, M.B.; McLellan, J.S.; Arnoult, E.; Langedijk, J.P.; Roymans, D.  
Deposited on : 2015-10-15  
Resolution : 2.75 Å (reported)

This is a Full wwPDB X-ray Structure Validation Report for a publicly released PDB entry.

We welcome your comments at [validation@mail.wwpdb.org](mailto:validation@mail.wwpdb.org)

A user guide is available at

<https://www.wwpdb.org/validation/2017/XrayValidationReportHelp>

with specific help available everywhere you see the ⓘ symbol.

The types of validation reports are described at

<http://www.wwpdb.org/validation/2017/FAQs#types>.

---

The following versions of software and data (see [references ⓘ](#)) were used in the production of this report:

MolProbity : 4-5-2 with Phenix2.0  
Mogul : 2022.3.0, CSD as543be (2022)  
Xtrriage (Phenix) : 2.0  
EDS : 3.0  
Buster-report : wwPDB partial adaption of 1.1.7 (2018)  
Percentile statistics : 20250101.v01 (using entries in the PDB archive January 1st 2025)  
CCP4 : 9.0.010 (Gargrove)  
Density-Fitness : 1.0.12  
Ideal geometry (proteins) : Engh & Huber (2001)  
Ideal geometry (DNA, RNA) : Parkinson et al. (1996)  
Validation Pipeline (wwPDB-VP) : 2.49

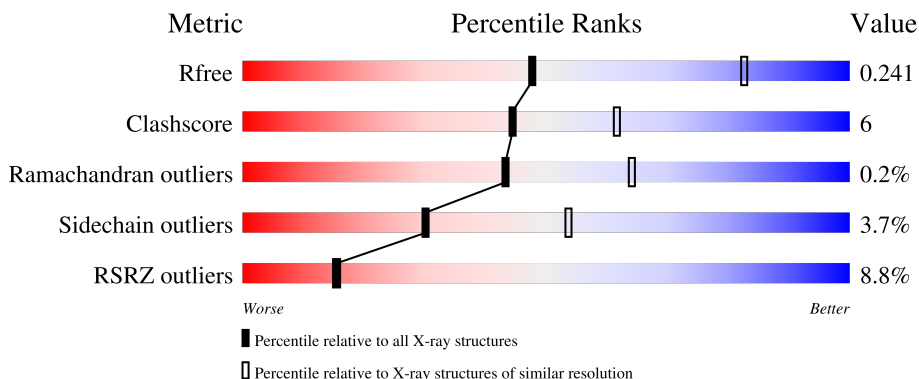
# 1 Overall quality at a glance

The following experimental techniques were used to determine the structure:

*X-RAY DIFFRACTION*

The reported resolution of this entry is 2.75 Å.

Percentile scores (ranging between 0-100) for global validation metrics of the entry are shown in the following graphic. The table shows the number of entries on which the scores are based.



Metric	Whole archive (#Entries)	Similar resolution (#Entries, resolution range(Å))
$R_{free}$	180053	1009 (2.76-2.76)
Clashscore	190562	1044 (2.76-2.76)
Ramachandran outliers	187476	1024 (2.76-2.76)
Sidechain outliers	187428	1024 (2.76-2.76)
RSRZ outliers	180081	1009 (2.76-2.76)

The table below summarises the geometric issues observed across the polymeric chains and their fit to the electron density. The red, orange, yellow and green segments of the lower bar indicate the fraction of residues that contain outliers for  $\geq 3$ , 2, 1 and 0 types of geometric quality criteria respectively. A grey segment represents the fraction of residues that are not modelled. The numeric value for each fraction is indicated below the corresponding segment, with a dot representing fractions  $\leq 5\%$ . The upper red bar (where present) indicates the fraction of residues that have poor fit to the electron density. The numeric value is given above the bar.

Mol	Chain	Length	Quality of chain
1	F	568	

## 2 Entry composition i

There are 5 unique types of molecules in this entry. The entry contains 3361 atoms, of which 0 are hydrogens and 0 are deuteriums.

In the tables below, the ZeroOcc column contains the number of atoms modelled with zero occupancy, the AltConf column contains the number of residues with at least one atom in alternate conformation and the Trace column contains the number of residues modelled with at most 2 atoms.

- Molecule 1 is a protein called Fusion glycoprotein F0.

Mol	Chain	Residues	Atoms					ZeroOcc	AltConf	Trace
			Total	C	N	O	S			
1	F	419	3253	2066	531	635	21	0	0	0

There are 62 discrepancies between the modelled and reference sequences:

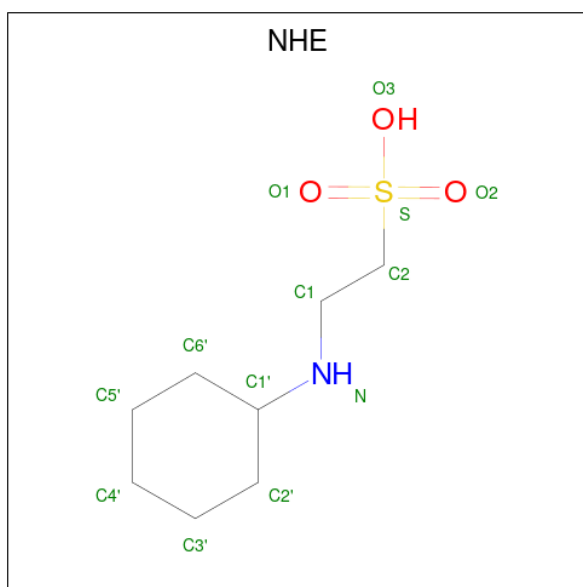
Chain	Residue	Modelled	Actual	Comment	Reference
F	102	ALA	PRO	variant	UNP P03420
F	155	CYS	SER	engineered mutation	UNP P03420
F	190	PHE	SER	engineered mutation	UNP P03420
F	207	LEU	VAL	engineered mutation	UNP P03420
F	290	CYS	SER	engineered mutation	UNP P03420
F	379	VAL	ILE	variant	UNP P03420
F	447	VAL	MET	variant	UNP P03420
F	514	SER	-	expression tag	UNP P03420
F	515	ALA	-	expression tag	UNP P03420
F	516	ILE	-	expression tag	UNP P03420
F	517	GLY	-	expression tag	UNP P03420
F	518	GLY	-	expression tag	UNP P03420
F	519	TYR	-	expression tag	UNP P03420
F	520	ILE	-	expression tag	UNP P03420
F	521	PRO	-	expression tag	UNP P03420
F	522	GLU	-	expression tag	UNP P03420
F	523	ALA	-	expression tag	UNP P03420
F	524	PRO	-	expression tag	UNP P03420
F	525	ARG	-	expression tag	UNP P03420
F	526	ASP	-	expression tag	UNP P03420
F	527	GLY	-	expression tag	UNP P03420
F	528	GLN	-	expression tag	UNP P03420
F	529	ALA	-	expression tag	UNP P03420
F	530	TYR	-	expression tag	UNP P03420
F	531	VAL	-	expression tag	UNP P03420
F	532	ARG	-	expression tag	UNP P03420
F	533	LYS	-	expression tag	UNP P03420

*Continued on next page...*

*Continued from previous page...*

Chain	Residue	Modelled	Actual	Comment	Reference
F	534	ASP	-	expression tag	UNP P03420
F	535	GLY	-	expression tag	UNP P03420
F	536	GLU	-	expression tag	UNP P03420
F	537	TRP	-	expression tag	UNP P03420
F	538	VAL	-	expression tag	UNP P03420
F	539	LEU	-	expression tag	UNP P03420
F	540	LEU	-	expression tag	UNP P03420
F	541	SER	-	expression tag	UNP P03420
F	542	THR	-	expression tag	UNP P03420
F	543	PHE	-	expression tag	UNP P03420
F	544	LEU	-	expression tag	UNP P03420
F	545	GLY	-	expression tag	UNP P03420
F	546	GLY	-	expression tag	UNP P03420
F	547	LEU	-	expression tag	UNP P03420
F	548	VAL	-	expression tag	UNP P03420
F	549	PRO	-	expression tag	UNP P03420
F	550	ARG	-	expression tag	UNP P03420
F	551	GLY	-	expression tag	UNP P03420
F	552	SER	-	expression tag	UNP P03420
F	553	HIS	-	expression tag	UNP P03420
F	554	HIS	-	expression tag	UNP P03420
F	555	HIS	-	expression tag	UNP P03420
F	556	HIS	-	expression tag	UNP P03420
F	557	HIS	-	expression tag	UNP P03420
F	558	HIS	-	expression tag	UNP P03420
F	559	SER	-	expression tag	UNP P03420
F	560	ALA	-	expression tag	UNP P03420
F	561	TRP	-	expression tag	UNP P03420
F	562	SER	-	expression tag	UNP P03420
F	563	HIS	-	expression tag	UNP P03420
F	564	PRO	-	expression tag	UNP P03420
F	565	GLN	-	expression tag	UNP P03420
F	566	PHE	-	expression tag	UNP P03420
F	567	GLU	-	expression tag	UNP P03420
F	568	LYS	-	expression tag	UNP P03420

- Molecule 2 is 2-[N-CYCLOHEXYLAMINO]ETHANE SULFONIC ACID (CCD ID: NHE) (formula: C<sub>8</sub>H<sub>17</sub>NO<sub>3</sub>S).



Mol	Chain	Residues	Atoms					ZeroOcc	AltConf
			Total	C	N	O	S		
2	F	1	13	8	1	3	1	0	0

- Molecule 3 is SULFATE ION (CCD ID: SO4) (formula: O<sub>4</sub>S).



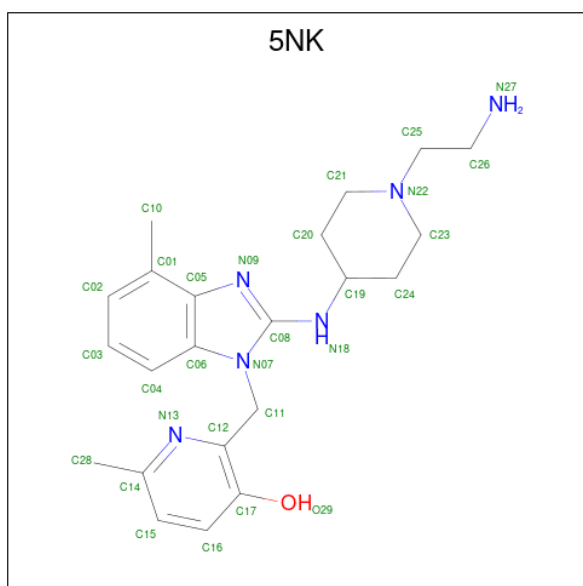
Mol	Chain	Residues	Atoms			ZeroOcc	AltConf
			Total	O	S		
3	F	1	5	4	1	0	0
3	F	1	5	4	1	0	0
3	F	1	5	4	1	0	0

*Continued on next page...*

Continued from previous page...

Mol	Chain	Residues	Atoms			ZeroOcc	AltConf
3	F	1	Total	O	S	0	0
			5	4	1		
3	F	1	Total	O	S	0	0
			5	4	1		
3	F	1	Total	O	S	0	0
			5	4	1		

- Molecule 4 is 2-[[2-[[1-(2-azanylethyl)piperidin-4-yl]amino]-4-methyl-benzimidazol-1-yl]methyl]-6-methyl-pyridin-3-ol (CCD ID: 5NK) (formula: C<sub>22</sub>H<sub>30</sub>N<sub>6</sub>O).



Mol	Chain	Residues	Atoms				ZeroOcc	AltConf
4	F	1	Total	C	N	O	0	0
			29	22	6	1		

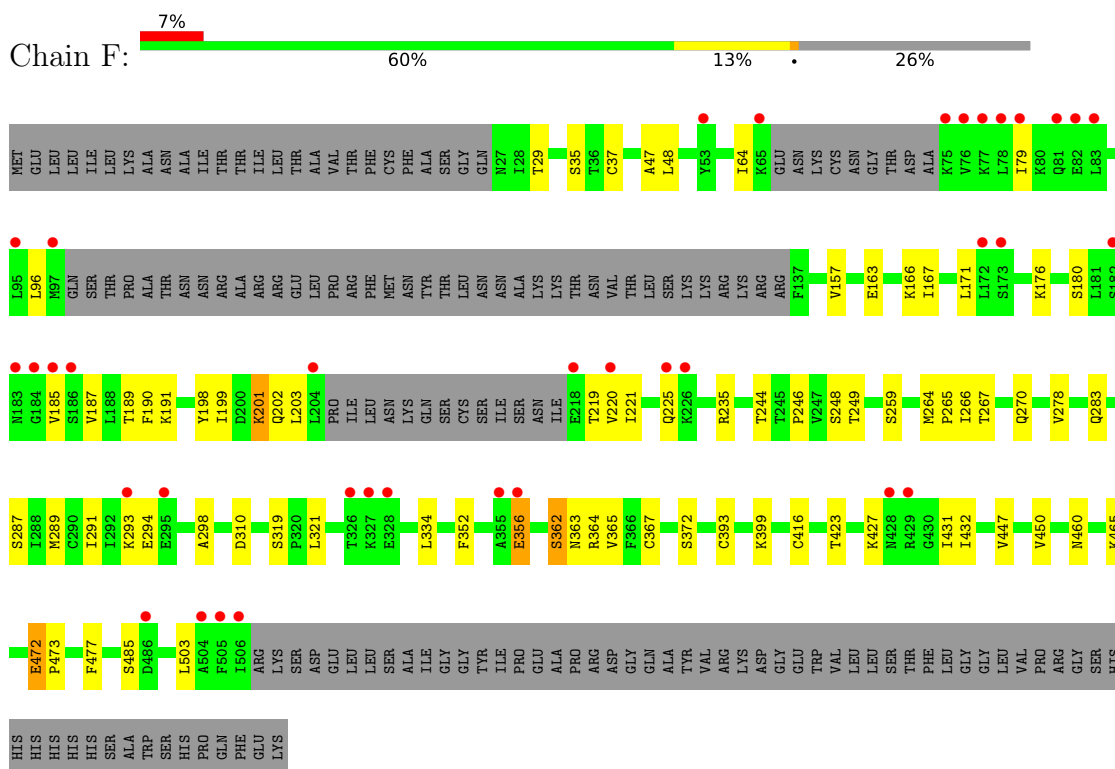
- Molecule 5 is water.

Mol	Chain	Residues	Atoms		ZeroOcc	AltConf
5	F	36	Total	O	0	0
			36	36		

### 3 Residue-property plots [i](#)

These plots are drawn for all protein, RNA, DNA and oligosaccharide chains in the entry. The first graphic for a chain summarises the proportions of the various outlier classes displayed in the second graphic. The second graphic shows the sequence view annotated by issues in geometry and electron density. Residues are color-coded according to the number of geometric quality criteria for which they contain at least one outlier: green = 0, yellow = 1, orange = 2 and red = 3 or more. A red dot above a residue indicates a poor fit to the electron density ( $RSRZ > 2$ ). Stretches of 2 or more consecutive residues without any outlier are shown as a green connector. Residues present in the sample, but not in the model, are shown in grey.

- Molecule 1: Fusion glycoprotein F0



## 4 Data and refinement statistics

Property	Value	Source
Space group	P 41 3 2	Depositor
Cell constants a, b, c, $\alpha$ , $\beta$ , $\gamma$	170.11Å 170.11Å 170.11Å 90.00° 90.00° 90.00°	Depositor
Resolution (Å)	49.11 – 2.75 49.11 – 2.75	Depositor EDS
% Data completeness (in resolution range)	100.0 (49.11-2.75) 94.9 (49.11-2.75)	Depositor EDS
$R_{merge}$	0.26	Depositor
$R_{sym}$	(Not available)	Depositor
$\langle I/\sigma(I) \rangle$ <sup>1</sup>	1.55 (at 2.77Å)	Xtrriage
Refinement program	PHENIX	Depositor
R, $R_{free}$	0.199 , 0.229 0.211 , 0.241	Depositor DCC
$R_{free}$ test set	1129 reflections (3.07%)	wwPDB-VP
Wilson B-factor (Å <sup>2</sup> )	54.1	Xtrriage
Anisotropy	0.000	Xtrriage
Bulk solvent $k_{sol}$ (e/Å <sup>3</sup> ), $B_{sol}$ (Å <sup>2</sup> )	0.34 , 57.5	EDS
L-test for twinning <sup>2</sup>	$\langle  L  \rangle = 0.47$ , $\langle L^2 \rangle = 0.30$	Xtrriage
Estimated twinning fraction	No twinning to report.	Xtrriage
$F_o, F_c$ correlation	0.93	EDS
Total number of atoms	3361	wwPDB-VP
Average B, all atoms (Å <sup>2</sup> )	65.0	wwPDB-VP

Xtrriage's analysis on translational NCS is as follows: *The largest off-origin peak in the Patterson function is 2.36% of the height of the origin peak. No significant pseudotranslation is detected.*

<sup>1</sup>Intensities estimated from amplitudes.

<sup>2</sup>Theoretical values of  $\langle |L| \rangle$ ,  $\langle L^2 \rangle$  for acentric reflections are 0.5, 0.333 respectively for untwinned datasets, and 0.375, 0.2 for perfectly twinned datasets.

## 5 Model quality [i](#)

### 5.1 Standard geometry [i](#)

Bond lengths and bond angles in the following residue types are not validated in this section: NHE, SO4, 5NK

The Z score for a bond length (or angle) is the number of standard deviations the observed value is removed from the expected value. A bond length (or angle) with  $|Z| > 5$  is considered an outlier worth inspection. RMSZ is the root-mean-square of all Z scores of the bond lengths (or angles).

Mol	Chain	Bond lengths		Bond angles	
		RMSZ	# Z  >5	RMSZ	# Z  >5
1	F	0.40	0/3300	0.75	0/4469

There are no bond length outliers.

There are no bond angle outliers.

There are no chirality outliers.

There are no planarity outliers.

### 5.2 Too-close contacts [i](#)

In the following table, the Non-H and H(model) columns list the number of non-hydrogen atoms and hydrogen atoms in the chain respectively. The H(added) column lists the number of hydrogen atoms added and optimized by MolProbity. The Clashes column lists the number of clashes within the asymmetric unit, whereas Symm-Clashes lists symmetry-related clashes.

Mol	Chain	Non-H	H(model)	H(added)	Clashes	Symm-Clashes
1	F	3253	0	3296	39	0
2	F	13	0	17	1	0
3	F	30	0	0	0	0
4	F	29	0	30	0	0
5	F	36	0	0	3	0
All	All	3361	0	3343	40	0

The all-atom clashscore is defined as the number of clashes found per 1000 atoms (including hydrogen atoms). The all-atom clashscore for this structure is 6.

All (40) close contacts within the same asymmetric unit are listed below, sorted by their clash magnitude.

Atom-1	Atom-2	Interatomic distance (Å)	Clash overlap (Å)
1:F:246:PRO:HB3	1:F:283:GLN:HA	1.69	0.72
1:F:266:ILE:HD12	1:F:270:GLN:HB3	1.75	0.69
1:F:267:THR:HG23	1:F:270:GLN:H	1.65	0.62
1:F:460:ASN:ND2	5:F:702:HOH:O	2.18	0.61
1:F:167:ILE:HG23	1:F:189:THR:HG21	1.87	0.56
1:F:176:LYS:NZ	1:F:259:SER:HB3	2.23	0.53
1:F:248:SER:N	5:F:701:HOH:O	2.04	0.53
1:F:198:TYR:OH	1:F:219:THR:O	2.29	0.49
1:F:29:THR:HG22	1:F:465:LYS:HE3	1.94	0.49
1:F:48:LEU:HD22	1:F:367:CYS:HB2	1.95	0.49
1:F:244:THR:OG1	1:F:287:SER:HB3	2.13	0.49
1:F:185:VAL:HG12	1:F:187:VAL:HG13	1.96	0.47
1:F:35:SER:HA	1:F:473:PRO:HA	1.97	0.47
1:F:352:PHE:CE2	1:F:372:SER:HB3	2.49	0.47
1:F:176:LYS:HZ2	1:F:259:SER:HB3	1.80	0.47
1:F:47:ALA:HB2	1:F:364:ARG:HD2	1.97	0.46
1:F:96:LEU:HD23	1:F:289:MET:HG2	1.98	0.46
1:F:201:LYS:HB2	1:F:201:LYS:NZ	2.30	0.46
1:F:221:ILE:O	1:F:225:GLN:HG2	2.15	0.46
1:F:310:ASP:OD1	1:F:364:ARG:NH1	2.44	0.46
1:F:356:GLU:H	1:F:356:GLU:CD	2.24	0.46
1:F:432:ILE:HD11	1:F:447:VAL:HG22	1.97	0.46
1:F:472:GLU:HG2	1:F:477:PHE:CZ	2.51	0.45
1:F:171:LEU:HD11	1:F:189:THR:HG22	1.99	0.45
1:F:362:SER:OG	1:F:363:ASN:N	2.45	0.45
1:F:293:LYS:HG2	1:F:294:GLU:HG3	1.98	0.45
1:F:199:ILE:HG23	1:F:203:LEU:HD12	1.98	0.44
1:F:79:ILE:HD11	1:F:220:VAL:HG22	2.00	0.44
1:F:393:CYS:HB3	5:F:722:HOH:O	2.16	0.44
2:F:601:NHE:H2'2	2:F:601:NHE:HC11	1.87	0.43
1:F:37:CYS:SG	1:F:319:SER:HB3	2.59	0.43
1:F:291:ILE:HG22	1:F:298:ALA:HB3	2.01	0.43
1:F:166:LYS:NZ	1:F:180:SER:O	2.34	0.43
1:F:264:MET:HA	1:F:265:PRO:HD3	1.85	0.42
1:F:321:LEU:HD11	1:F:473:PRO:HB3	2.01	0.42
1:F:157:VAL:HG12	1:F:163:GLU:HG2	2.02	0.42
1:F:423:THR:HG21	1:F:431:ILE:HD13	2.01	0.42
1:F:399:LYS:HG2	1:F:485:SER:HB2	2.02	0.41
1:F:503:LEU:HD23	1:F:503:LEU:HA	1.84	0.41
1:F:171:LEU:HD13	1:F:191:LYS:HB2	2.03	0.41

There are no symmetry-related clashes.

## 5.3 Torsion angles [i](#)

### 5.3.1 Protein backbone [i](#)

In the following table, the Percentiles column shows the percent Ramachandran outliers of the chain as a percentile score with respect to all X-ray entries followed by that with respect to entries of similar resolution.

The Analysed column shows the number of residues for which the backbone conformation was analysed, and the total number of residues.

Mol	Chain	Analysed	Favoured	Allowed	Outliers	Percentiles
1	F	411/568 (72%)	393 (96%)	17 (4%)	1 (0%)	43 64

All (1) Ramachandran outliers are listed below:

Mol	Chain	Res	Type
1	F	362	SER

### 5.3.2 Protein sidechains [i](#)

In the following table, the Percentiles column shows the percent sidechain outliers of the chain as a percentile score with respect to all X-ray entries followed by that with respect to entries of similar resolution.

The Analysed column shows the number of residues for which the sidechain conformation was analysed, and the total number of residues.

Mol	Chain	Analysed	Rotameric	Outliers	Percentiles
1	F	382/510 (75%)	368 (96%)	14 (4%)	30 54

All (14) residues with a non-rotameric sidechain are listed below:

Mol	Chain	Res	Type
1	F	64	ILE
1	F	190	PHE
1	F	201	LYS
1	F	202	GLN
1	F	235	ARG
1	F	249	THR
1	F	278	VAL
1	F	334	LEU
1	F	356	GLU
1	F	365	VAL

*Continued on next page...*

*Continued from previous page...*

Mol	Chain	Res	Type
1	F	416	CYS
1	F	427	LYS
1	F	450	VAL
1	F	472	GLU

Sometimes sidechains can be flipped to improve hydrogen bonding and reduce clashes. All (3) such sidechains are listed below:

Mol	Chain	Res	Type
1	F	159	HIS
1	F	175	ASN
1	F	240	ASN

### 5.3.3 RNA [i](#)

There are no RNA molecules in this entry.

## 5.4 Non-standard residues in protein, DNA, RNA chains [i](#)

There are no non-standard protein/DNA/RNA residues in this entry.

## 5.5 Carbohydrates [i](#)

There are no oligosaccharides in this entry.

## 5.6 Ligand geometry [i](#)

8 ligands are modelled in this entry.

In the following table, the Counts columns list the number of bonds (or angles) for which Mogul statistics could be retrieved, the number of bonds (or angles) that are observed in the model and the number of bonds (or angles) that are defined in the Chemical Component Dictionary. The Link column lists molecule types, if any, to which the group is linked. The Z score for a bond length (or angle) is the number of standard deviations the observed value is removed from the expected value. A bond length (or angle) with  $|Z| > 2$  is considered an outlier worth inspection. RMSZ is the root-mean-square of all Z scores of the bond lengths (or angles).

Mol	Type	Chain	Res	Link	Bond lengths			Bond angles		
					Counts	RMSZ	$\# Z  > 2$	Counts	RMSZ	$\# Z  > 2$
3	SO4	F	605	-	4,4,4	0.24	0	6,6,6	0.08	0

Mol	Type	Chain	Res	Link	Bond lengths			Bond angles		
					Counts	RMSZ	# Z  > 2	Counts	RMSZ	# Z  > 2
4	5NK	F	608	-	31,32,32	4.96	18 (58%)	35,45,45	1.41	4 (11%)
2	NHE	F	601	-	13,13,13	1.38	2 (15%)	16,17,17	1.80	5 (31%)
3	SO4	F	606	-	4,4,4	0.27	0	6,6,6	0.05	0
3	SO4	F	604	-	4,4,4	0.25	0	6,6,6	0.11	0
3	SO4	F	602	-	4,4,4	0.24	0	6,6,6	0.06	0
3	SO4	F	607	-	4,4,4	0.24	0	6,6,6	0.08	0
3	SO4	F	603	-	4,4,4	0.24	0	6,6,6	0.09	0

In the following table, the Chirals column lists the number of chiral outliers, the number of chiral centers analysed, the number of these observed in the model and the number defined in the Chemical Component Dictionary. Similar counts are reported in the Torsion and Rings columns. '-' means no outliers of that kind were identified.

Mol	Type	Chain	Res	Link	Chirals	Torsions	Rings
2	NHE	F	601	-	-	3/7/15/15	0/1/1/1
4	5NK	F	608	-	-	3/11/21/21	0/4/4/4

All (20) bond length outliers are listed below:

Mol	Chain	Res	Type	Atoms	Z	Observed(Å)	Ideal(Å)
4	F	608	5NK	C04-C06	11.86	1.58	1.39
4	F	608	5NK	C05-C01	11.79	1.56	1.40
4	F	608	5NK	C17-C12	8.25	1.54	1.40
4	F	608	5NK	C14-N13	7.11	1.47	1.34
4	F	608	5NK	C03-C04	7.05	1.51	1.38
4	F	608	5NK	C12-N13	6.82	1.45	1.34
4	F	608	5NK	C15-C14	6.35	1.53	1.39
4	F	608	5NK	C03-C02	6.15	1.49	1.38
4	F	608	5NK	C02-C01	6.07	1.52	1.39
4	F	608	5NK	C08-N18	5.66	1.47	1.35
4	F	608	5NK	C16-C15	5.02	1.46	1.38
4	F	608	5NK	C08-N09	4.55	1.39	1.32
4	F	608	5NK	C16-C17	4.51	1.47	1.39
4	F	608	5NK	C11-C12	3.79	1.56	1.51
4	F	608	5NK	C25-N22	-3.60	1.39	1.47
2	F	601	NHE	C2-S	2.55	1.81	1.77
2	F	601	NHE	O2-S	2.55	1.52	1.45
4	F	608	5NK	C10-C01	2.50	1.55	1.51
4	F	608	5NK	C19-N18	2.03	1.50	1.46
4	F	608	5NK	C24-C19	-2.02	1.47	1.52

All (9) bond angle outliers are listed below:

Mol	Chain	Res	Type	Atoms	Z	Observed(°)	Ideal(°)
2	F	601	NHE	O3-S-O1	-4.07	101.22	111.40
4	F	608	5NK	C05-C06-N07	3.46	107.75	105.22
2	F	601	NHE	O2-S-C2	3.28	111.68	106.73
4	F	608	5NK	C24-C23-N22	3.05	116.01	111.08
2	F	601	NHE	C1-N-C1'	-2.74	108.90	114.18
4	F	608	5NK	C11-C12-N13	2.52	119.80	115.15
2	F	601	NHE	O1-S-C2	2.46	110.44	106.73
2	F	601	NHE	O3-S-C2	2.31	110.52	106.00
4	F	608	5NK	C28-C14-N13	2.28	120.00	116.56

There are no chirality outliers.

All (6) torsion outliers are listed below:

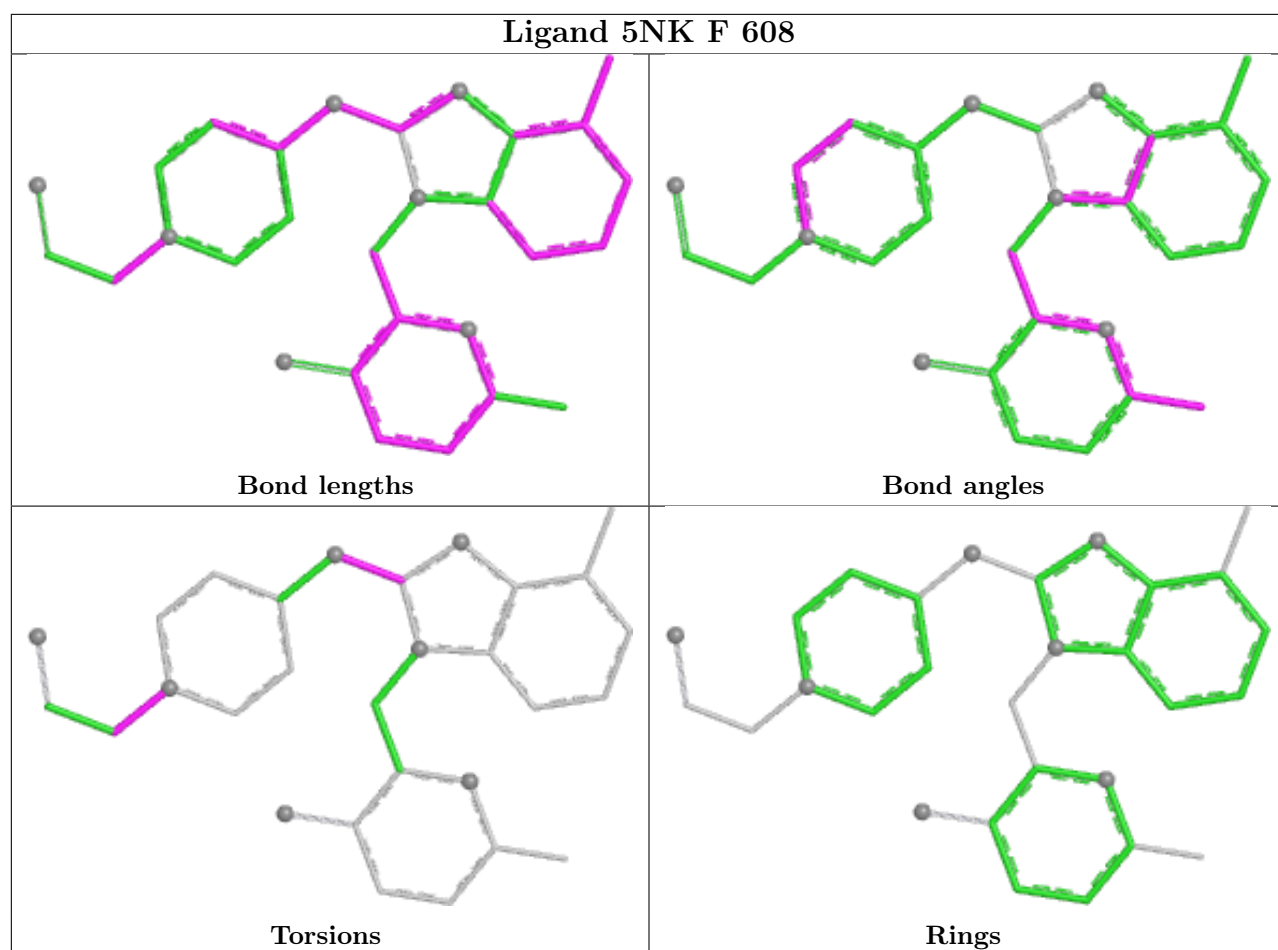
Mol	Chain	Res	Type	Atoms
2	F	601	NHE	C1-C2-S-O3
4	F	608	5NK	N09-C08-N18-C19
4	F	608	5NK	C26-C25-N22-C21
2	F	601	NHE	C1-C2-S-O1
2	F	601	NHE	C1-C2-S-O2
4	F	608	5NK	C26-C25-N22-C23

There are no ring outliers.

1 monomer is involved in 1 short contact:

Mol	Chain	Res	Type	Clashes	Symm-Clashes
2	F	601	NHE	1	0

The following is a two-dimensional graphical depiction of Mogul quality analysis of bond lengths, bond angles, torsion angles, and ring geometry for all instances of the Ligand of Interest. In addition, ligands with molecular weight > 250 and outliers as shown on the validation Tables will also be included. For torsion angles, if less than 5% of the Mogul distribution of torsion angles is within 10 degrees of the torsion angle in question, then that torsion angle is considered an outlier. Any bond that is central to one or more torsion angles identified as an outlier by Mogul will be highlighted in the graph. For rings, the root-mean-square deviation (RMSD) between the ring in question and similar rings identified by Mogul is calculated over all ring torsion angles. If the average RMSD is greater than 60 degrees and the minimal RMSD between the ring in question and any Mogul-identified rings is also greater than 60 degrees, then that ring is considered an outlier. The outliers are highlighted in purple. The color gray indicates Mogul did not find sufficient equivalents in the CSD to analyse the geometry.



## 5.7 Other polymers [i](#)

There are no such residues in this entry.

## 5.8 Polymer linkage issues [i](#)

There are no chain breaks in this entry.

## 6 Fit of model and data

### 6.1 Protein, DNA and RNA chains

In the following table, the column labelled ‘#RSRZ> 2’ contains the number (and percentage) of RSRZ outliers, followed by percent RSRZ outliers for the chain as percentile scores relative to all X-ray entries and entries of similar resolution. The OWAB column contains the minimum, median, 95<sup>th</sup> percentile and maximum values of the occupancy-weighted average B-factor per residue. The column labelled ‘Q< 0.9’ lists the number of (and percentage) of residues with an average occupancy less than 0.9.

Mol	Chain	Analysed	<RSRZ>	#RSRZ>2	OWAB(Å <sup>2</sup> )	Q<0.9
1	F	419/568 (73%)	0.33	37 (8%) <b>15</b> <b>15</b>	30, 55, 113, 131	0

All (37) RSRZ outliers are listed below:

Mol	Chain	Res	Type	RSRZ
1	F	76	VAL	6.3
1	F	65	LYS	4.6
1	F	75	LYS	4.5
1	F	204	LEU	4.4
1	F	183	ASN	4.1
1	F	506	ILE	4.0
1	F	78	LEU	3.8
1	F	220	VAL	3.8
1	F	97	MET	3.3
1	F	77	LYS	3.2
1	F	218	GLU	3.2
1	F	81	GLN	3.2
1	F	184	GLY	3.2
1	F	172	LEU	3.1
1	F	326	THR	3.1
1	F	83	LEU	3.1
1	F	355	ALA	3.1
1	F	293	LYS	3.0
1	F	53	TYR	3.0
1	F	226	LYS	2.8
1	F	327	LYS	2.7
1	F	225	GLN	2.7
1	F	79	ILE	2.6
1	F	505	PHE	2.6
1	F	429	ARG	2.5
1	F	504	ALA	2.4
1	F	328	GLU	2.3

*Continued on next page...*

*Continued from previous page...*

Mol	Chain	Res	Type	RSRZ
1	F	173	SER	2.3
1	F	185	VAL	2.3
1	F	295	GLU	2.2
1	F	486	ASP	2.2
1	F	428	ASN	2.1
1	F	186	SER	2.1
1	F	356	GLU	2.1
1	F	82	GLU	2.0
1	F	182	SER	2.0
1	F	95	LEU	2.0

## 6.2 Non-standard residues in protein, DNA, RNA chains [i](#)

There are no non-standard protein/DNA/RNA residues in this entry.

## 6.3 Carbohydrates [i](#)

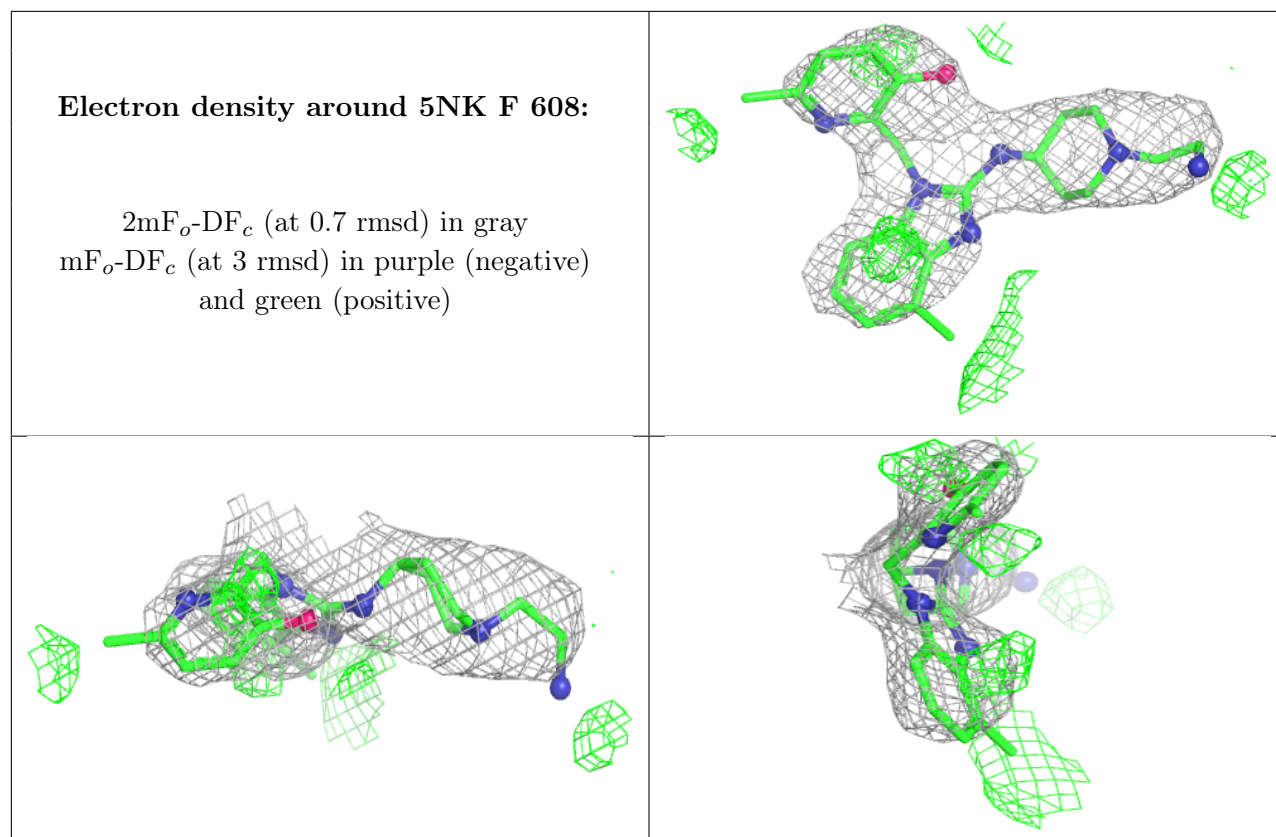
There are no oligosaccharides in this entry.

## 6.4 Ligands [i](#)

In the following table, the Atoms column lists the number of modelled atoms in the group and the number defined in the chemical component dictionary. The B-factors column lists the minimum, median, 95<sup>th</sup> percentile and maximum values of B factors of atoms in the group. The column labelled 'Q< 0.9' lists the number of atoms with occupancy less than 0.9.

Mol	Type	Chain	Res	Atoms	RSCC	RSR	B-factors(Å <sup>2</sup> )	Q<0.9
3	SO4	F	607	5/5	0.51	0.15	166,166,166,166	0
3	SO4	F	603	5/5	0.69	0.18	138,138,139,139	0
3	SO4	F	605	5/5	0.72	0.17	165,165,165,165	0
3	SO4	F	606	5/5	0.77	0.12	125,125,126,126	0
3	SO4	F	604	5/5	0.81	0.16	134,134,134,135	0
3	SO4	F	602	5/5	0.89	0.12	123,123,124,125	0
2	NHE	F	601	13/13	0.94	0.12	63,70,84,84	0
4	5NK	F	608	29/29	0.94	0.14	34,36,39,44	29

The following is a graphical depiction of the model fit to experimental electron density of all instances of the Ligand of Interest. In addition, ligands with molecular weight > 250 and outliers as shown on the geometry validation Tables will also be included. Each fit is shown from different orientation to approximate a three-dimensional view.



## 6.5 Other polymers [i](#)

There are no such residues in this entry.