



Full wwPDB X-ray Structure Validation Report ⓘ

Mar 6, 2026 – 07:42 AM UTC

PDB ID : 6EA9 / pdb_00006ea9
Title : Structure of VACV Poxin in post-reactive state with Gp[2'-5']Ap[3']
Authors : Eaglesham, J.B.; Kranzusch, P.J.
Deposited on : 2018-08-02
Resolution : 2.10 Å(reported)

This is a Full wwPDB X-ray Structure Validation Report for a publicly released PDB entry.

We welcome your comments at validation@mail.wwpdb.org

A user guide is available at

<https://www.wwpdb.org/validation/2017/XrayValidationReportHelp>

with specific help available everywhere you see the ⓘ symbol.

The types of validation reports are described at

<http://www.wwpdb.org/validation/2017/FAQs#types>.

The following versions of software and data (see [references ⓘ](#)) were used in the production of this report:

MolProbity : 4-5-2 with Phenix2.0
Mogul : 2022.3.0, CSD as543be (2022)
Xtriage (Phenix) : 2.0
EDS : 3.0
Buster-report : wwPDB partial adaption of 1.1.7 (2018)
Percentile statistics : 20250101.v01 (using entries in the PDB archive January 1st 2025)
CCP4 : 9.0.010 (Gargrove)
Density-Fitness : 1.0.12
Ideal geometry (proteins) : Engh & Huber (2001)
Ideal geometry (DNA, RNA) : Parkinson et al. (1996)
Validation Pipeline (wwPDB-VP) : 2.49

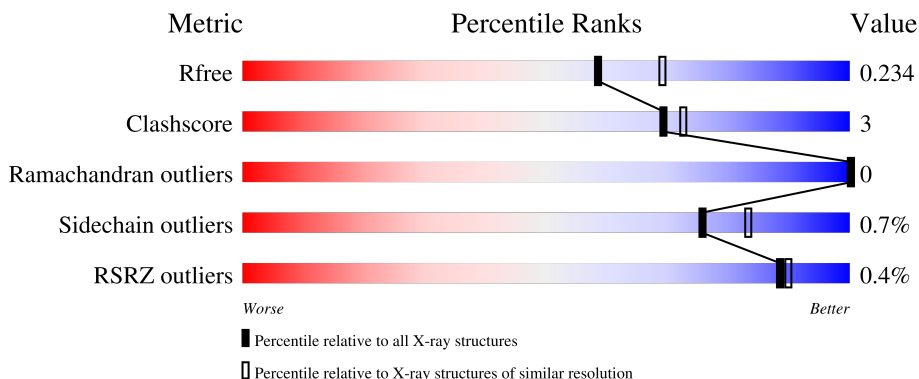
1 Overall quality at a glance

The following experimental techniques were used to determine the structure:

X-RAY DIFFRACTION

The reported resolution of this entry is 2.10 Å.

Percentile scores (ranging between 0-100) for global validation metrics of the entry are shown in the following graphic. The table shows the number of entries on which the scores are based.



Metric	Whole archive (#Entries)	Similar resolution (#Entries, resolution range(Å))
R_{free}	180053	6658 (2.10-2.10)
Clashscore	190562	7164 (2.10-2.10)
Ramachandran outliers	187476	7099 (2.10-2.10)
Sidechain outliers	187428	7100 (2.10-2.10)
RSRZ outliers	180081	6662 (2.10-2.10)

The table below summarises the geometric issues observed across the polymeric chains and their fit to the electron density. The red, orange, yellow and green segments of the lower bar indicate the fraction of residues that contain outliers for ≥ 3 , 2, 1 and 0 types of geometric quality criteria respectively. A grey segment represents the fraction of residues that are not modelled. The numeric value for each fraction is indicated below the corresponding segment, with a dot representing fractions $\leq 5\%$. The upper red bar (where present) indicates the fraction of residues that have poor fit to the electron density. The numeric value is given above the bar.

Mol	Chain	Length	Quality of chain
1	A	220	 81% 7% 11%
1	B	220	 78% 11% 11%
1	C	220	 80% 9% 11%
1	D	220	 83% 5% 11%
1	E	220	 82% 6% 11%

2 Entry composition

There are 3 unique types of molecules in this entry. The entry contains 8194 atoms, of which 0 are hydrogens and 0 are deuteriums.

In the tables below, the ZeroOcc column contains the number of atoms modelled with zero occupancy, the AltConf column contains the number of residues with at least one atom in alternate conformation and the Trace column contains the number of residues modelled with at most 2 atoms.

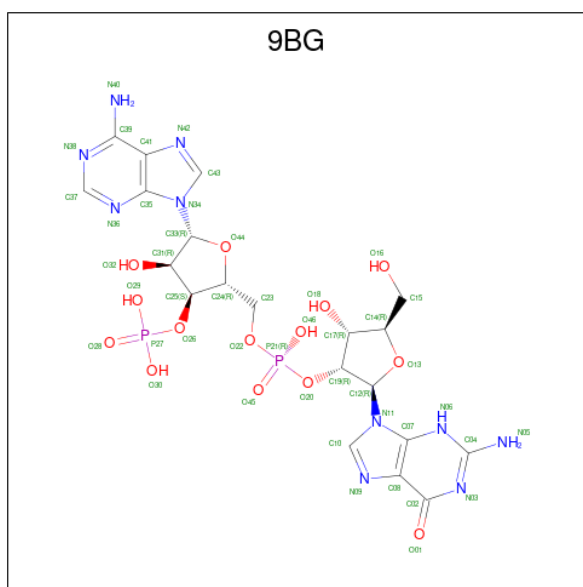
- Molecule 1 is a protein called Protein B2.

Mol	Chain	Residues	Atoms					ZeroOcc	AltConf	Trace
			Total	C	N	O	S			
1	A	195	1552	994	261	285	12	0	0	0
1	B	195	1552	994	261	285	12	0	0	0
1	C	195	1554	995	262	285	12	0	0	0
1	D	195	1552	994	261	285	12	0	0	0
1	E	195	1552	994	261	285	12	0	0	0

There are 5 discrepancies between the modelled and reference sequences:

Chain	Residue	Modelled	Actual	Comment	Reference
A	0	SER	-	expression tag	UNP Q01225
B	0	SER	-	expression tag	UNP Q01225
C	0	SER	-	expression tag	UNP Q01225
D	0	SER	-	expression tag	UNP Q01225
E	0	SER	-	expression tag	UNP Q01225

- Molecule 2 is 2',5'-GpAp (CCD ID: 9BG) (formula: C₂₀H₂₆N₁₀O₁₄P₂).



Mol	Chain	Residues	Atoms				ZeroOcc	AltConf	
			Total	C	N	O			P
2	A	1	46	20	10	14	2	0	0
2	B	1	46	20	10	14	2	0	0
2	C	1	46	20	10	14	2	0	0
2	D	1	46	20	10	14	2	0	0
2	E	1	46	20	10	14	2	0	0

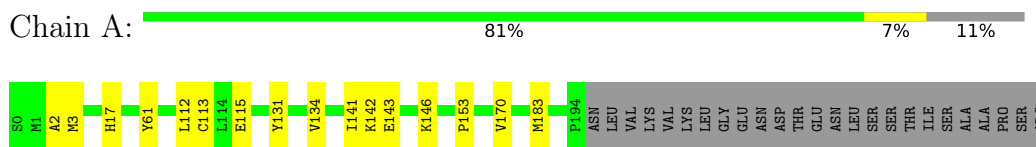
- Molecule 3 is water.

Mol	Chain	Residues	Atoms		ZeroOcc	AltConf
			Total	O		
3	A	58	58	58	0	0
3	B	76	76	76	0	0
3	C	36	36	36	0	0
3	D	18	18	18	0	0
3	E	14	14	14	0	0

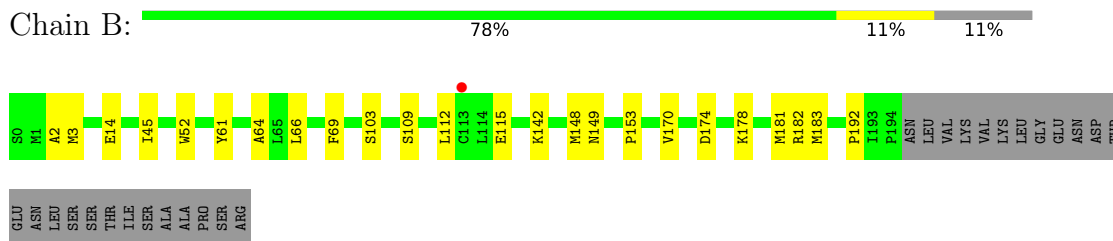
3 Residue-property plots [i](#)

These plots are drawn for all protein, RNA, DNA and oligosaccharide chains in the entry. The first graphic for a chain summarises the proportions of the various outlier classes displayed in the second graphic. The second graphic shows the sequence view annotated by issues in geometry and electron density. Residues are color-coded according to the number of geometric quality criteria for which they contain at least one outlier: green = 0, yellow = 1, orange = 2 and red = 3 or more. A red dot above a residue indicates a poor fit to the electron density ($RSRZ > 2$). Stretches of 2 or more consecutive residues without any outlier are shown as a green connector. Residues present in the sample, but not in the model, are shown in grey.

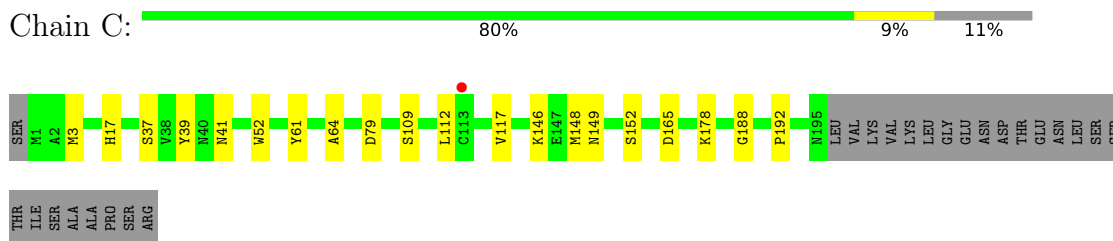
- Molecule 1: Protein B2



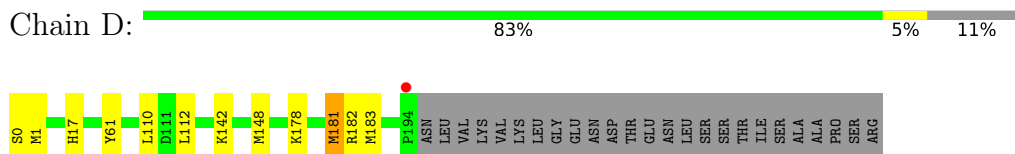
- Molecule 1: Protein B2



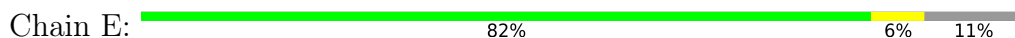
- Molecule 1: Protein B2

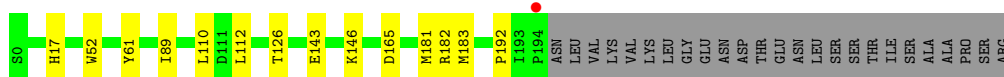


- Molecule 1: Protein B2



- Molecule 1: Protein B2





4 Data and refinement statistics

Property	Value	Source
Space group	C 1 2 1	Depositor
Cell constants a, b, c, α , β , γ	215.42Å 57.15Å 133.11Å 90.00° 120.37° 90.00°	Depositor
Resolution (Å)	38.28 – 2.10 38.28 – 2.10	Depositor EDS
% Data completeness (in resolution range)	98.5 (38.28-2.10) 98.9 (38.28-2.10)	Depositor EDS
R_{merge}	(Not available)	Depositor
R_{sym}	(Not available)	Depositor
$\langle I/\sigma(I) \rangle$ ¹	1.79 (at 2.10Å)	Xtrriage
Refinement program	PHENIX (1.13_2998: ???)	Depositor
R, R_{free}	0.199 , 0.224 0.211 , 0.234	Depositor DCC
R_{free} test set	2000 reflections (2.46%)	wwPDB-VP
Wilson B-factor (Å ²)	44.1	Xtrriage
Anisotropy	0.643	Xtrriage
Bulk solvent k_{sol} (e/Å ³), B_{sol} (Å ²)	0.32 , 42.7	EDS
L-test for twinning ²	$\langle L \rangle = 0.50$, $\langle L^2 \rangle = 0.34$	Xtrriage
Estimated twinning fraction	No twinning to report.	Xtrriage
F_o, F_c correlation	0.96	EDS
Total number of atoms	8194	wwPDB-VP
Average B, all atoms (Å ²)	65.0	wwPDB-VP

Xtrriage's analysis on translational NCS is as follows: *The largest off-origin peak in the Patterson function is 6.77% of the height of the origin peak. No significant pseudotranslation is detected.*

¹Intensities estimated from amplitudes.

²Theoretical values of $\langle |L| \rangle$, $\langle L^2 \rangle$ for acentric reflections are 0.5, 0.333 respectively for untwinned datasets, and 0.375, 0.2 for perfectly twinned datasets.

5 Model quality [i](#)

5.1 Standard geometry [i](#)

Bond lengths and bond angles in the following residue types are not validated in this section: 9BG

The Z score for a bond length (or angle) is the number of standard deviations the observed value is removed from the expected value. A bond length (or angle) with $|Z| > 5$ is considered an outlier worth inspection. RMSZ is the root-mean-square of all Z scores of the bond lengths (or angles).

Mol	Chain	Bond lengths		Bond angles	
		RMSZ	# Z >5	RMSZ	# Z >5
1	A	0.30	0/1592	0.50	0/2156
1	B	0.29	0/1592	0.48	0/2156
1	C	0.25	0/1594	0.46	0/2159
1	D	0.23	0/1592	0.45	0/2156
1	E	0.20	0/1592	0.42	0/2156
All	All	0.25	0/7962	0.46	0/10783

There are no bond length outliers.

There are no bond angle outliers.

There are no chirality outliers.

There are no planarity outliers.

5.2 Too-close contacts [i](#)

In the following table, the Non-H and H(model) columns list the number of non-hydrogen atoms and hydrogen atoms in the chain respectively. The H(added) column lists the number of hydrogen atoms added and optimized by MolProbity. The Clashes column lists the number of clashes within the asymmetric unit, whereas Symm-Clashes lists symmetry-related clashes.

Mol	Chain	Non-H	H(model)	H(added)	Clashes	Symm-Clashes
1	A	1552	0	1516	12	0
1	B	1552	0	1516	16	0
1	C	1554	0	1517	11	0
1	D	1552	0	1516	7	0
1	E	1552	0	1516	9	0
2	A	46	0	0	1	0
2	B	46	0	0	2	0
2	C	46	0	0	2	0

Continued on next page...

Continued from previous page...

Mol	Chain	Non-H	H(model)	H(added)	Clashes	Symm-Clashes
2	D	46	0	0	3	0
2	E	46	0	0	2	0
3	A	58	0	0	0	0
3	B	76	0	0	1	0
3	C	36	0	0	1	0
3	D	18	0	0	0	0
3	E	14	0	0	1	0
All	All	8194	0	7581	54	0

The all-atom clashscore is defined as the number of clashes found per 1000 atoms (including hydrogen atoms). The all-atom clashscore for this structure is 3.

All (54) close contacts within the same asymmetric unit are listed below, sorted by their clash magnitude.

Atom-1	Atom-2	Interatomic distance (Å)	Clash overlap (Å)
1:C:17:HIS:NE2	3:C:401:HOH:O	1.92	1.00
1:E:89:ILE:O	3:E:401:HOH:O	2.06	0.73
2:C:301:9BG:O32	2:C:301:9BG:O29	2.05	0.73
1:C:39:TYR:OH	1:C:79:ASP:OD2	2.08	0.71
1:E:143:GLU:HA	1:E:146:LYS:HZ2	1.58	0.68
1:E:143:GLU:HA	1:E:146:LYS:NZ	2.13	0.64
1:A:113:CYS:SG	1:B:178:LYS:NZ	2.70	0.59
2:D:301:9BG:O32	2:D:301:9BG:O29	2.21	0.59
1:E:61:TYR:HB3	1:E:112:LEU:HB2	1.86	0.57
1:A:3:MET:HA	1:A:3:MET:HE2	1.87	0.57
1:B:3:MET:HA	1:B:3:MET:HE2	1.86	0.55
1:B:61:TYR:HB3	1:B:112:LEU:HB2	1.90	0.53
1:A:142:LYS:HE2	2:A:301:9BG:O29	2.09	0.53
1:D:0:SER:OG	1:D:1:MET:N	2.42	0.52
1:C:3:MET:HA	1:C:3:MET:HE2	1.92	0.52
1:E:17:HIS:HA	2:E:301:9BG:O30	2.10	0.51
2:C:301:9BG:O30	1:D:17:HIS:HA	2.10	0.51
1:C:148:MET:O	1:C:178:LYS:NZ	2.41	0.50
1:B:174:ASP:HB2	3:B:401:HOH:O	2.11	0.50
1:A:142:LYS:NZ	1:B:14:GLU:O	2.44	0.49
1:C:17:HIS:HA	2:D:301:9BG:O30	2.13	0.49
1:B:142:LYS:HE2	2:B:301:9BG:O29	2.13	0.49
1:B:170:VAL:HB	1:B:183:MET:CG	2.43	0.49
1:D:61:TYR:HB3	1:D:112:LEU:HB2	1.95	0.49
1:B:45:ILE:HD13	1:B:69:PHE:HB3	1.96	0.48
1:A:143:GLU:OE1	1:A:146:LYS:NZ	2.46	0.48

Continued on next page...

Continued from previous page...

Atom-1	Atom-2	Interatomic distance (Å)	Clash overlap (Å)
1:A:153:PRO:HG2	1:B:115:GLU:HB3	1.98	0.46
1:A:61:TYR:HB3	1:A:112:LEU:HB2	1.98	0.46
1:C:37:SER:HA	1:C:41:ASN:O	2.15	0.46
1:A:170:VAL:HB	1:A:183:MET:CG	2.46	0.45
1:D:181:MET:HG2	1:D:182:ARG:N	2.32	0.45
1:E:52:TRP:O	1:E:192:PRO:HD3	2.17	0.45
1:C:165:ASP:O	1:C:188:GLY:HA3	2.17	0.44
1:C:146:LYS:O	1:C:149:ASN:HB2	2.18	0.44
1:B:181:MET:HG2	1:B:182:ARG:N	2.32	0.44
1:E:165:ASP:N	1:E:165:ASP:OD1	2.50	0.44
1:B:52:TRP:O	1:B:192:PRO:HD3	2.18	0.43
2:E:301:9BG:O29	2:E:301:9BG:O32	2.36	0.43
1:D:148:MET:O	1:D:178:LYS:NZ	2.52	0.43
1:E:110:LEU:HD13	1:E:183:MET:HE1	2.01	0.42
1:A:131:TYR:HB2	1:A:141:ILE:HG23	2.02	0.42
1:A:17:HIS:HA	2:B:301:9BG:O29	2.19	0.42
1:C:64:ALA:HA	1:C:109:SER:HA	2.02	0.42
1:B:148:MET:HE3	1:B:148:MET:HB3	1.87	0.42
1:D:110:LEU:HD13	1:D:183:MET:HE1	2.02	0.42
1:B:64:ALA:HA	1:B:109:SER:HA	2.02	0.41
1:A:2:ALA:O	1:A:3:MET:HE2	2.21	0.41
1:A:115:GLU:HB3	1:B:153:PRO:HG3	2.01	0.41
1:B:2:ALA:O	1:B:3:MET:HE2	2.21	0.41
1:C:52:TRP:O	1:C:192:PRO:HD3	2.20	0.41
1:B:66:LEU:HD13	1:B:103:SER:HA	2.03	0.41
1:D:142:LYS:HE2	2:D:301:9BG:O30	2.21	0.40
1:C:61:TYR:HB3	1:C:112:LEU:HB2	2.02	0.40
1:E:181:MET:HG2	1:E:182:ARG:N	2.36	0.40

There are no symmetry-related clashes.

5.3 Torsion angles [i](#)

5.3.1 Protein backbone [i](#)

In the following table, the Percentiles column shows the percent Ramachandran outliers of the chain as a percentile score with respect to all X-ray entries followed by that with respect to entries of similar resolution.

The Analysed column shows the number of residues for which the backbone conformation was analysed, and the total number of residues.

Mol	Chain	Analysed	Favoured	Allowed	Outliers	Percentiles	
1	A	193/220 (88%)	189 (98%)	4 (2%)	0	100	100
1	B	193/220 (88%)	189 (98%)	4 (2%)	0	100	100
1	C	193/220 (88%)	188 (97%)	5 (3%)	0	100	100
1	D	193/220 (88%)	189 (98%)	4 (2%)	0	100	100
1	E	193/220 (88%)	190 (98%)	3 (2%)	0	100	100
All	All	965/1100 (88%)	945 (98%)	20 (2%)	0	100	100

There are no Ramachandran outliers to report.

5.3.2 Protein sidechains [i](#)

In the following table, the Percentiles column shows the percent sidechain outliers of the chain as a percentile score with respect to all X-ray entries followed by that with respect to entries of similar resolution.

The Analysed column shows the number of residues for which the sidechain conformation was analysed, and the total number of residues.

Mol	Chain	Analysed	Rotameric	Outliers	Percentiles	
1	A	167/189 (88%)	166 (99%)	1 (1%)	78	86
1	B	167/189 (88%)	166 (99%)	1 (1%)	78	86
1	C	167/189 (88%)	165 (99%)	2 (1%)	63	72
1	D	167/189 (88%)	166 (99%)	1 (1%)	78	86
1	E	167/189 (88%)	166 (99%)	1 (1%)	78	86
All	All	835/945 (88%)	829 (99%)	6 (1%)	76	83

All (6) residues with a non-rotameric sidechain are listed below:

Mol	Chain	Res	Type
1	A	134	VAL
1	B	149	ASN
1	C	117	VAL
1	C	152	SER
1	D	181	MET
1	E	126	THR

Sometimes sidechains can be flipped to improve hydrogen bonding and reduce clashes. All (7) such sidechains are listed below:

Mol	Chain	Res	Type
1	A	82	HIS
1	B	82	HIS
1	B	87	ASN
1	B	149	ASN
1	C	76	GLN
1	D	87	ASN
1	E	76	GLN

5.3.3 RNA [i](#)

There are no RNA molecules in this entry.

5.4 Non-standard residues in protein, DNA, RNA chains [i](#)

There are no non-standard protein/DNA/RNA residues in this entry.

5.5 Carbohydrates [i](#)

There are no oligosaccharides in this entry.

5.6 Ligand geometry [i](#)

5 ligands are modelled in this entry.

In the following table, the Counts columns list the number of bonds (or angles) for which Mogul statistics could be retrieved, the number of bonds (or angles) that are observed in the model and the number of bonds (or angles) that are defined in the Chemical Component Dictionary. The Link column lists molecule types, if any, to which the group is linked. The Z score for a bond length (or angle) is the number of standard deviations the observed value is removed from the expected value. A bond length (or angle) with $|Z| > 2$ is considered an outlier worth inspection. RMSZ is the root-mean-square of all Z scores of the bond lengths (or angles).

Mol	Type	Chain	Res	Link	Bond lengths			Bond angles		
					Counts	RMSZ	# Z > 2	Counts	RMSZ	# Z > 2
2	9BG	E	301	-	51,51,51	4.00	28 (54%)	71,79,79	1.67	17 (23%)
2	9BG	B	301	-	51,51,51	3.88	29 (56%)	71,79,79	1.80	19 (26%)
2	9BG	A	301	-	51,51,51	3.92	28 (54%)	71,79,79	1.74	15 (21%)
2	9BG	C	301	-	51,51,51	3.95	28 (54%)	71,79,79	1.69	14 (19%)
2	9BG	D	301	-	51,51,51	3.98	28 (54%)	71,79,79	1.71	15 (21%)

In the following table, the Chirals column lists the number of chiral outliers, the number of chiral centers analysed, the number of these observed in the model and the number defined in the Chemical Component Dictionary. Similar counts are reported in the Torsion and Rings columns. '-' means no outliers of that kind were identified.

Mol	Type	Chain	Res	Link	Chirals	Torsions	Rings
2	9BG	E	301	-	-	6/26/58/58	0/6/6/6
2	9BG	B	301	-	-	8/26/58/58	0/6/6/6
2	9BG	A	301	-	-	8/26/58/58	0/6/6/6
2	9BG	C	301	-	-	7/26/58/58	0/6/6/6
2	9BG	D	301	-	-	8/26/58/58	0/6/6/6

All (141) bond length outliers are listed below:

Mol	Chain	Res	Type	Atoms	Z	Observed(Å)	Ideal(Å)
2	A	301	9BG	C19-C12	-9.84	1.28	1.53
2	D	301	9BG	C19-C12	-9.79	1.29	1.53
2	C	301	9BG	C19-C12	-9.78	1.29	1.53
2	E	301	9BG	C19-C12	-9.72	1.29	1.53
2	B	301	9BG	C19-C12	-9.60	1.29	1.53
2	D	301	9BG	C25-C24	-9.33	1.28	1.52
2	E	301	9BG	C25-C24	-9.28	1.28	1.52
2	A	301	9BG	C25-C24	-9.21	1.29	1.52
2	C	301	9BG	C25-C24	-9.17	1.29	1.52
2	B	301	9BG	C25-C24	-8.87	1.30	1.52
2	A	301	9BG	C17-C14	-7.78	1.33	1.53
2	E	301	9BG	C17-C14	-7.72	1.33	1.53
2	D	301	9BG	C17-C14	-7.66	1.33	1.53
2	C	301	9BG	C17-C14	-7.59	1.33	1.53
2	B	301	9BG	C17-C14	-7.57	1.33	1.53
2	C	301	9BG	P27-O26	7.27	1.72	1.59
2	D	301	9BG	P27-O26	7.11	1.72	1.59
2	E	301	9BG	P27-O26	6.95	1.71	1.59
2	E	301	9BG	O13-C12	6.88	1.57	1.42
2	E	301	9BG	C07-N06	6.82	1.49	1.37
2	B	301	9BG	C31-C33	-6.76	1.32	1.53
2	D	301	9BG	O13-C12	6.73	1.57	1.42
2	A	301	9BG	C31-C33	-6.65	1.32	1.53
2	B	301	9BG	O13-C12	6.64	1.57	1.42
2	E	301	9BG	C31-C33	-6.63	1.32	1.53
2	D	301	9BG	C31-C33	-6.61	1.32	1.53
2	E	301	9BG	O44-C24	6.59	1.59	1.45
2	C	301	9BG	O44-C24	6.57	1.59	1.45
2	A	301	9BG	C07-N06	6.54	1.48	1.37

Continued on next page...

Continued from previous page...

Mol	Chain	Res	Type	Atoms	Z	Observed(Å)	Ideal(Å)
2	C	301	9BG	O13-C12	6.51	1.57	1.42
2	C	301	9BG	C31-C33	-6.49	1.33	1.53
2	B	301	9BG	O44-C24	6.47	1.59	1.45
2	A	301	9BG	O13-C12	6.47	1.56	1.42
2	D	301	9BG	O44-C24	6.44	1.59	1.45
2	A	301	9BG	C07-N11	-6.43	1.30	1.37
2	A	301	9BG	O44-C24	6.43	1.59	1.45
2	C	301	9BG	C07-N06	6.39	1.48	1.37
2	B	301	9BG	C07-N06	6.36	1.48	1.37
2	D	301	9BG	C07-N11	-6.34	1.30	1.37
2	A	301	9BG	P27-O26	6.33	1.70	1.59
2	B	301	9BG	P27-O26	6.21	1.70	1.59
2	D	301	9BG	C07-N06	6.15	1.48	1.37
2	B	301	9BG	C07-N11	-5.82	1.31	1.37
2	C	301	9BG	C07-N11	-5.78	1.31	1.37
2	E	301	9BG	C39-N40	5.75	1.48	1.34
2	C	301	9BG	C39-N40	5.63	1.48	1.34
2	A	301	9BG	C39-N40	5.59	1.48	1.34
2	D	301	9BG	C39-N40	5.58	1.48	1.34
2	B	301	9BG	C39-N40	5.48	1.48	1.34
2	E	301	9BG	C08-N09	-5.35	1.28	1.39
2	D	301	9BG	C08-N09	-5.35	1.28	1.39
2	A	301	9BG	C08-N09	-5.34	1.28	1.39
2	E	301	9BG	C07-N11	-5.25	1.31	1.37
2	B	301	9BG	C31-C25	5.17	1.64	1.53
2	E	301	9BG	C02-N03	5.16	1.46	1.38
2	C	301	9BG	C31-C25	5.05	1.64	1.53
2	D	301	9BG	C02-N03	5.05	1.46	1.38
2	B	301	9BG	C08-N09	-5.01	1.29	1.39
2	E	301	9BG	C31-C25	4.99	1.63	1.53
2	A	301	9BG	C02-N03	4.93	1.46	1.38
2	C	301	9BG	C08-N09	-4.93	1.29	1.39
2	D	301	9BG	C31-C25	4.89	1.63	1.53
2	C	301	9BG	C02-N03	4.69	1.46	1.38
2	A	301	9BG	C31-C25	4.66	1.63	1.53
2	B	301	9BG	C04-N05	4.51	1.44	1.34
2	B	301	9BG	C02-N03	4.49	1.45	1.38
2	D	301	9BG	C04-N03	4.48	1.44	1.33
2	E	301	9BG	C04-N03	4.45	1.44	1.33
2	C	301	9BG	C04-N03	4.44	1.43	1.33
2	E	301	9BG	O44-C33	4.41	1.52	1.42
2	B	301	9BG	C04-N03	4.37	1.43	1.33

Continued on next page...

Continued from previous page...

Mol	Chain	Res	Type	Atoms	Z	Observed(Å)	Ideal(Å)
2	C	301	9BG	O44-C33	4.33	1.52	1.42
2	C	301	9BG	C04-N05	4.32	1.44	1.34
2	E	301	9BG	C04-N05	4.31	1.44	1.34
2	D	301	9BG	O44-C33	4.20	1.51	1.42
2	D	301	9BG	C04-N05	4.18	1.43	1.34
2	E	301	9BG	C43-N34	-4.16	1.30	1.37
2	A	301	9BG	C04-N03	4.15	1.43	1.33
2	A	301	9BG	C04-N05	4.12	1.43	1.34
2	A	301	9BG	C43-N34	-4.08	1.30	1.37
2	E	301	9BG	C17-C19	3.99	1.61	1.53
2	B	301	9BG	C43-N34	-3.97	1.30	1.37
2	D	301	9BG	C17-C19	3.96	1.61	1.53
2	C	301	9BG	C17-C19	3.96	1.61	1.53
2	D	301	9BG	C43-N34	-3.92	1.30	1.37
2	C	301	9BG	C04-N06	3.89	1.47	1.37
2	B	301	9BG	C17-C19	3.86	1.61	1.53
2	B	301	9BG	O18-C17	3.83	1.52	1.43
2	B	301	9BG	O44-C33	3.81	1.50	1.42
2	A	301	9BG	C17-C19	3.80	1.61	1.53
2	C	301	9BG	C43-N34	-3.76	1.31	1.37
2	E	301	9BG	C04-N06	3.75	1.46	1.37
2	E	301	9BG	O18-C17	3.74	1.52	1.43
2	A	301	9BG	O44-C33	3.74	1.50	1.42
2	A	301	9BG	O18-C17	3.65	1.52	1.43
2	C	301	9BG	O18-C17	3.62	1.51	1.43
2	D	301	9BG	O18-C17	3.61	1.51	1.43
2	E	301	9BG	C10-N11	-3.48	1.29	1.37
2	D	301	9BG	C04-N06	3.42	1.45	1.37
2	A	301	9BG	C04-N06	3.32	1.45	1.37
2	C	301	9BG	O01-C02	-3.32	1.17	1.23
2	E	301	9BG	O01-C02	-3.28	1.17	1.23
2	C	301	9BG	C10-N11	-3.28	1.30	1.37
2	D	301	9BG	P27-O30	-3.27	1.42	1.54
2	D	301	9BG	C10-N11	-3.27	1.30	1.37
2	A	301	9BG	C10-N11	-3.21	1.30	1.37
2	B	301	9BG	C04-N06	3.20	1.45	1.37
2	D	301	9BG	O01-C02	-3.18	1.18	1.23
2	C	301	9BG	P27-O30	-3.16	1.43	1.54
2	A	301	9BG	O01-C02	-3.11	1.18	1.23
2	E	301	9BG	P27-O30	-3.10	1.43	1.54
2	B	301	9BG	P27-O30	-3.07	1.43	1.54
2	A	301	9BG	P27-O30	-3.06	1.43	1.54

Continued on next page...

Continued from previous page...

Mol	Chain	Res	Type	Atoms	Z	Observed(Å)	Ideal(Å)
2	E	301	9BG	O13-C14	3.03	1.51	1.45
2	B	301	9BG	O13-C14	3.02	1.51	1.45
2	B	301	9BG	C10-N11	-2.94	1.30	1.37
2	D	301	9BG	O13-C14	2.90	1.51	1.45
2	D	301	9BG	P21-O20	2.87	1.68	1.59
2	B	301	9BG	P21-O20	2.80	1.67	1.59
2	E	301	9BG	P21-O20	2.80	1.67	1.59
2	B	301	9BG	O01-C02	-2.79	1.18	1.23
2	C	301	9BG	P21-O20	2.75	1.67	1.59
2	C	301	9BG	O13-C14	2.70	1.51	1.45
2	A	301	9BG	P21-O20	2.67	1.67	1.59
2	E	301	9BG	C41-N42	-2.65	1.34	1.39
2	A	301	9BG	C43-N42	2.58	1.36	1.31
2	B	301	9BG	C43-N42	2.58	1.36	1.31
2	A	301	9BG	O13-C14	2.58	1.50	1.45
2	D	301	9BG	C41-N42	-2.57	1.34	1.39
2	A	301	9BG	C41-N42	-2.52	1.34	1.39
2	C	301	9BG	C43-N42	2.51	1.36	1.31
2	C	301	9BG	P21-O22	2.50	1.69	1.59
2	A	301	9BG	P21-O22	2.50	1.69	1.59
2	E	301	9BG	P21-O22	2.48	1.69	1.59
2	B	301	9BG	P21-O22	2.46	1.69	1.59
2	D	301	9BG	C43-N42	2.45	1.36	1.31
2	D	301	9BG	P21-O22	2.44	1.69	1.59
2	C	301	9BG	C41-N42	-2.38	1.34	1.39
2	B	301	9BG	C41-N42	-2.38	1.34	1.39
2	E	301	9BG	C43-N42	2.37	1.36	1.31
2	B	301	9BG	C02-C08	2.05	1.51	1.45

All (80) bond angle outliers are listed below:

Mol	Chain	Res	Type	Atoms	Z	Observed(°)	Ideal(°)
2	A	301	9BG	N38-C37-N36	-5.87	119.70	128.58
2	C	301	9BG	N38-C37-N36	-5.81	119.79	128.58
2	D	301	9BG	N38-C37-N36	-5.65	120.03	128.58
2	E	301	9BG	N38-C37-N36	-5.45	120.33	128.58
2	B	301	9BG	N38-C37-N36	-5.35	120.48	128.58
2	E	301	9BG	C41-C35-N36	-4.45	120.59	126.72
2	C	301	9BG	C41-C35-N36	-4.12	121.05	126.72
2	D	301	9BG	C41-C35-N36	-4.00	121.21	126.72
2	D	301	9BG	C35-C41-N42	-3.89	106.14	110.58
2	B	301	9BG	C35-C41-N42	-3.84	106.19	110.58

Continued on next page...

Continued from previous page...

Mol	Chain	Res	Type	Atoms	Z	Observed(°)	Ideal(°)
2	B	301	9BG	C41-C35-N36	-3.82	121.46	126.72
2	E	301	9BG	C35-C41-N42	-3.82	106.22	110.58
2	C	301	9BG	C37-N36-C35	3.79	121.09	111.83
2	E	301	9BG	C37-N36-C35	3.74	120.95	111.83
2	D	301	9BG	C37-N36-C35	3.71	120.89	111.83
2	A	301	9BG	C41-C35-N36	-3.63	121.71	126.72
2	C	301	9BG	C35-C41-N42	-3.62	106.44	110.58
2	A	301	9BG	C37-N36-C35	3.56	120.53	111.83
2	A	301	9BG	C35-C41-N42	-3.52	106.55	110.58
2	B	301	9BG	C24-O44-C33	-3.48	101.78	109.47
2	B	301	9BG	C37-N36-C35	3.44	120.24	111.83
2	A	301	9BG	C24-O44-C33	-3.41	101.93	109.47
2	B	301	9BG	N34-C43-N42	-3.29	109.27	113.94
2	D	301	9BG	N34-C43-N42	-3.17	109.44	113.94
2	C	301	9BG	N34-C43-N42	-3.10	109.54	113.94
2	E	301	9BG	C24-O44-C33	-3.07	102.68	109.47
2	D	301	9BG	C41-N42-C43	3.07	108.28	103.45
2	B	301	9BG	C41-N42-C43	3.07	108.28	103.45
2	D	301	9BG	C24-O44-C33	-3.02	102.80	109.47
2	E	301	9BG	C41-N42-C43	3.01	108.19	103.45
2	B	301	9BG	O26-C25-C24	-2.99	99.48	110.03
2	C	301	9BG	C41-N42-C43	2.97	108.12	103.45
2	A	301	9BG	N34-C43-N42	-2.93	109.77	113.94
2	C	301	9BG	C24-O44-C33	-2.93	102.99	109.47
2	D	301	9BG	C19-C17-C14	2.91	108.26	101.99
2	E	301	9BG	N34-C43-N42	-2.88	109.86	113.94
2	A	301	9BG	O44-C33-N34	2.87	113.59	108.09
2	A	301	9BG	C37-N38-C39	2.85	123.41	118.73
2	E	301	9BG	C19-C17-C14	2.84	108.10	101.99
2	A	301	9BG	C19-C17-C14	2.83	108.08	101.99
2	E	301	9BG	C15-C14-C17	-2.76	108.58	115.10
2	D	301	9BG	C39-C41-N42	2.72	137.33	132.09
2	C	301	9BG	C19-C17-C14	2.70	107.80	101.99
2	A	301	9BG	C41-N42-C43	2.70	107.69	103.45
2	B	301	9BG	C19-C17-C14	2.68	107.75	101.99
2	B	301	9BG	C39-C41-N42	2.62	137.13	132.09
2	B	301	9BG	C35-N34-C43	2.60	108.47	105.74
2	A	301	9BG	C39-C41-N42	2.59	137.09	132.09
2	E	301	9BG	N36-C35-N34	2.58	131.56	127.17
2	B	301	9BG	C14-O13-C12	-2.53	103.87	109.47
2	A	301	9BG	C14-O13-C12	-2.50	103.94	109.47
2	C	301	9BG	C14-O13-C12	-2.48	103.99	109.47

Continued on next page...

Continued from previous page...

Mol	Chain	Res	Type	Atoms	Z	Observed(°)	Ideal(°)
2	B	301	9BG	O20-C19-C17	-2.47	102.83	111.68
2	D	301	9BG	C37-N38-C39	2.46	122.78	118.73
2	C	301	9BG	C15-C14-C17	-2.46	109.29	115.10
2	C	301	9BG	C39-C41-N42	2.46	136.83	132.09
2	C	301	9BG	C37-N38-C39	2.45	122.75	118.73
2	B	301	9BG	C37-N38-C39	2.44	122.74	118.73
2	D	301	9BG	C15-C14-C17	-2.38	109.48	115.10
2	A	301	9BG	O22-C23-C24	-2.37	100.92	108.99
2	A	301	9BG	C35-N34-C43	2.36	108.21	105.74
2	B	301	9BG	O44-C33-N34	2.36	112.62	108.09
2	C	301	9BG	N36-C35-N34	2.35	131.17	127.17
2	D	301	9BG	C35-N34-C43	2.34	108.19	105.74
2	B	301	9BG	C08-C07-N11	2.34	107.33	106.25
2	E	301	9BG	C37-N38-C39	2.29	122.48	118.73
2	C	301	9BG	C35-N34-C43	2.26	108.11	105.74
2	E	301	9BG	C39-C41-N42	2.23	136.39	132.09
2	D	301	9BG	N36-C35-N34	2.16	130.84	127.17
2	D	301	9BG	C14-O13-C12	-2.13	104.75	109.47
2	E	301	9BG	C17-C19-C12	2.12	106.86	102.81
2	B	301	9BG	N36-C35-N34	2.11	130.75	127.17
2	E	301	9BG	O44-C33-C31	-2.10	102.12	106.62
2	E	301	9BG	O44-C33-N34	2.09	112.10	108.09
2	A	301	9BG	C35-N34-C33	-2.07	121.79	126.63
2	B	301	9BG	O44-C33-C31	-2.06	102.20	106.62
2	D	301	9BG	O22-C23-C24	-2.06	101.98	108.99
2	E	301	9BG	C35-N34-C43	2.05	107.89	105.74
2	B	301	9BG	O13-C12-C19	-2.02	103.11	106.59
2	E	301	9BG	C10-N09-C08	2.02	107.85	104.26

There are no chirality outliers.

All (37) torsion outliers are listed below:

Mol	Chain	Res	Type	Atoms
2	A	301	9BG	C23-O22-P21-O20
2	A	301	9BG	C23-O22-P21-O45
2	B	301	9BG	C23-O22-P21-O45
2	C	301	9BG	C23-O22-P21-O20
2	C	301	9BG	C23-O22-P21-O45
2	D	301	9BG	C23-O22-P21-O20
2	D	301	9BG	C23-O22-P21-O45
2	E	301	9BG	C23-O22-P21-O20
2	E	301	9BG	C23-O22-P21-O45

Continued on next page...

Continued from previous page...

Mol	Chain	Res	Type	Atoms
2	A	301	9BG	C17-C14-C15-O16
2	A	301	9BG	O13-C14-C15-O16
2	A	301	9BG	C24-C25-O26-P27
2	A	301	9BG	C31-C25-O26-P27
2	C	301	9BG	C31-C25-O26-P27
2	D	301	9BG	C24-C25-O26-P27
2	D	301	9BG	C31-C25-O26-P27
2	A	301	9BG	O22-C23-C24-C25
2	A	301	9BG	O22-C23-C24-O44
2	C	301	9BG	O22-C23-C24-O44
2	C	301	9BG	C24-C25-O26-P27
2	B	301	9BG	O22-C23-C24-O44
2	C	301	9BG	O22-C23-C24-C25
2	E	301	9BG	O22-C23-C24-C25
2	D	301	9BG	O22-C23-C24-C25
2	D	301	9BG	O22-C23-C24-O44
2	E	301	9BG	O22-C23-C24-O44
2	B	301	9BG	O22-C23-C24-C25
2	B	301	9BG	O13-C14-C15-O16
2	B	301	9BG	C17-C14-C15-O16
2	B	301	9BG	C24-C25-O26-P27
2	B	301	9BG	C25-O26-P27-O30
2	E	301	9BG	C24-C25-O26-P27
2	C	301	9BG	C25-O26-P27-O28
2	D	301	9BG	C25-O26-P27-O28
2	B	301	9BG	C31-C25-O26-P27
2	D	301	9BG	C25-O26-P27-O30
2	E	301	9BG	C31-C25-O26-P27

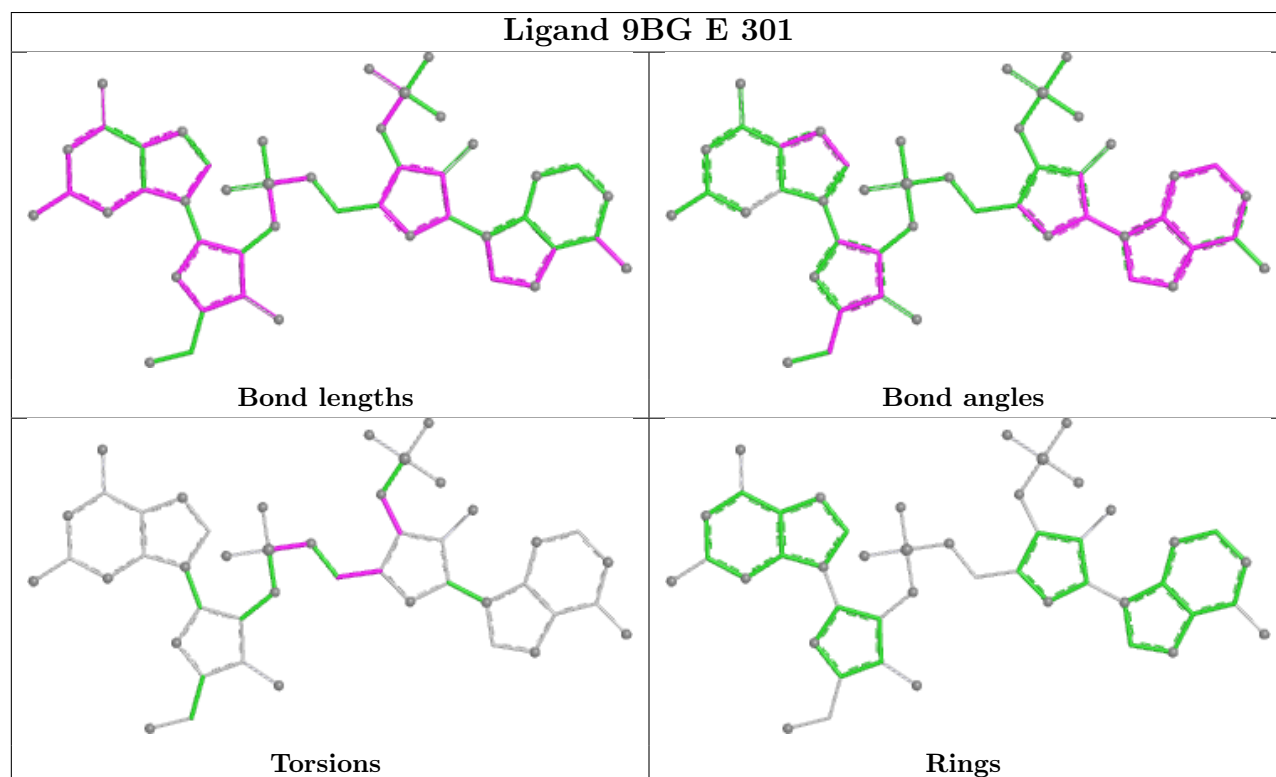
There are no ring outliers.

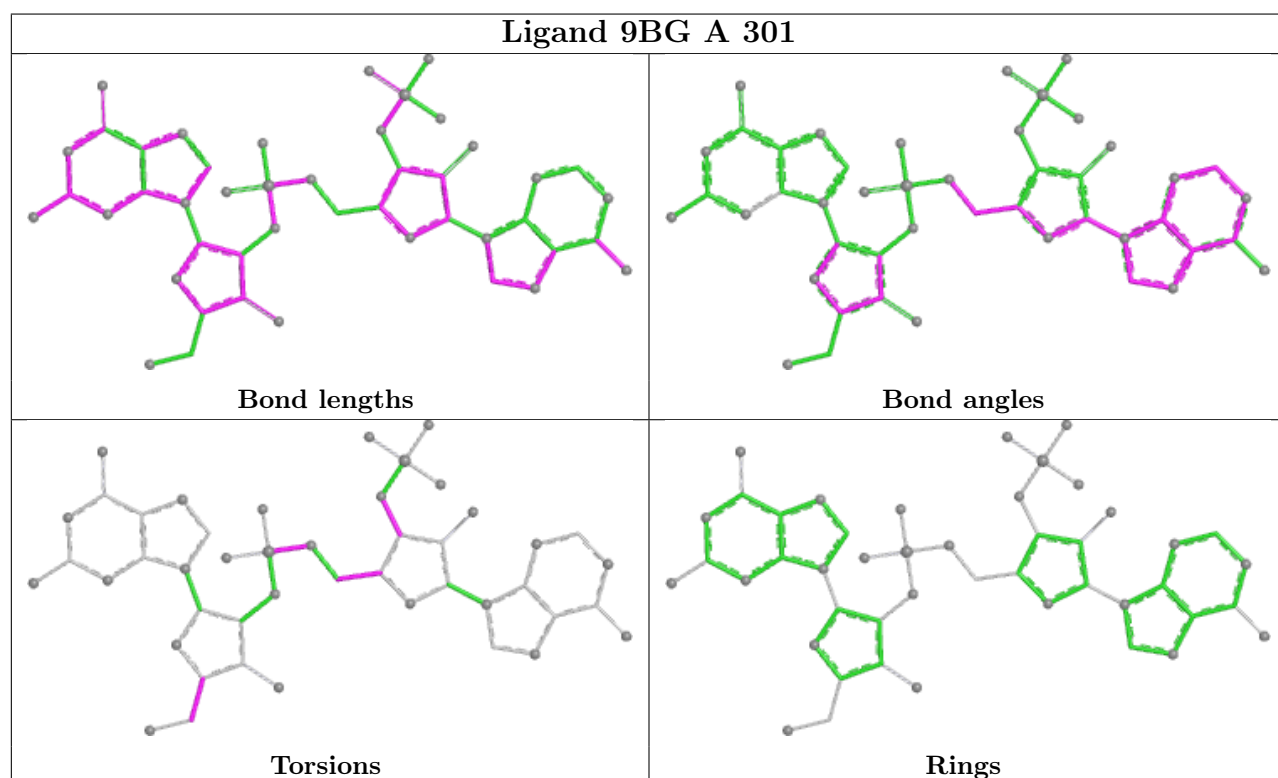
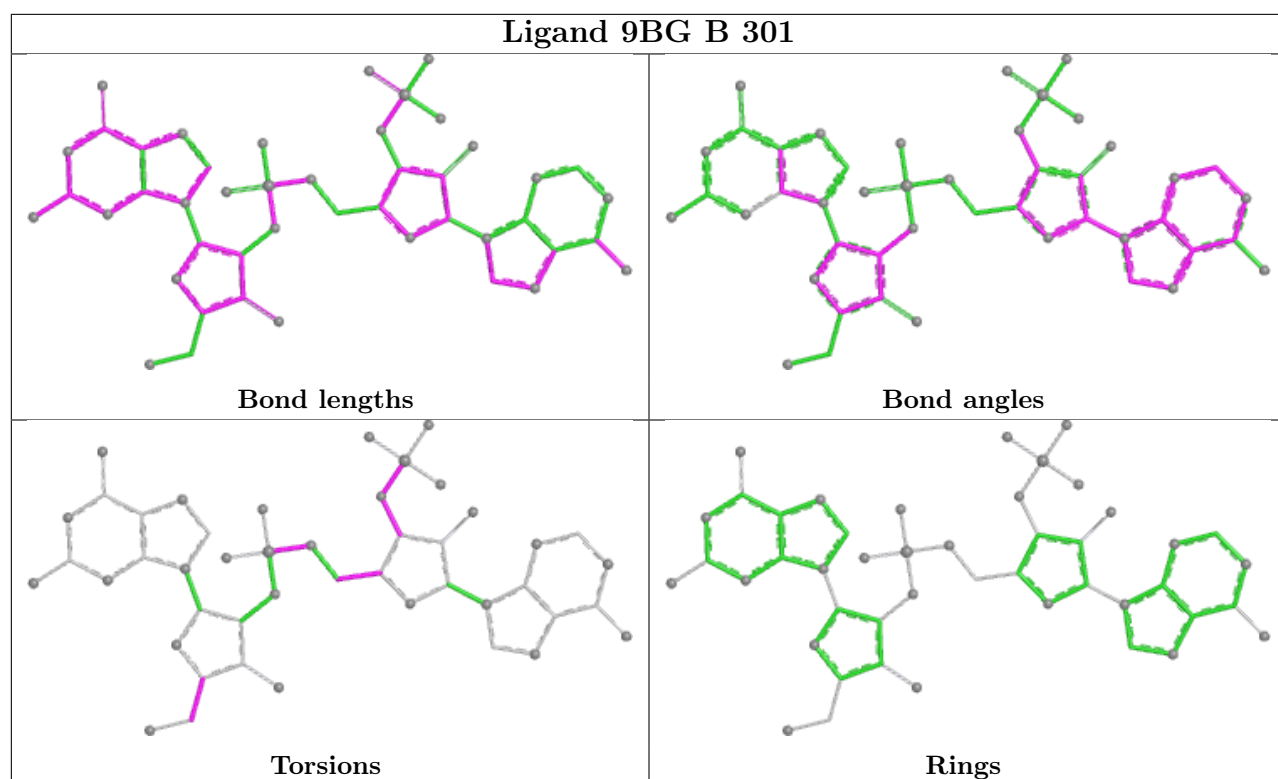
5 monomers are involved in 10 short contacts:

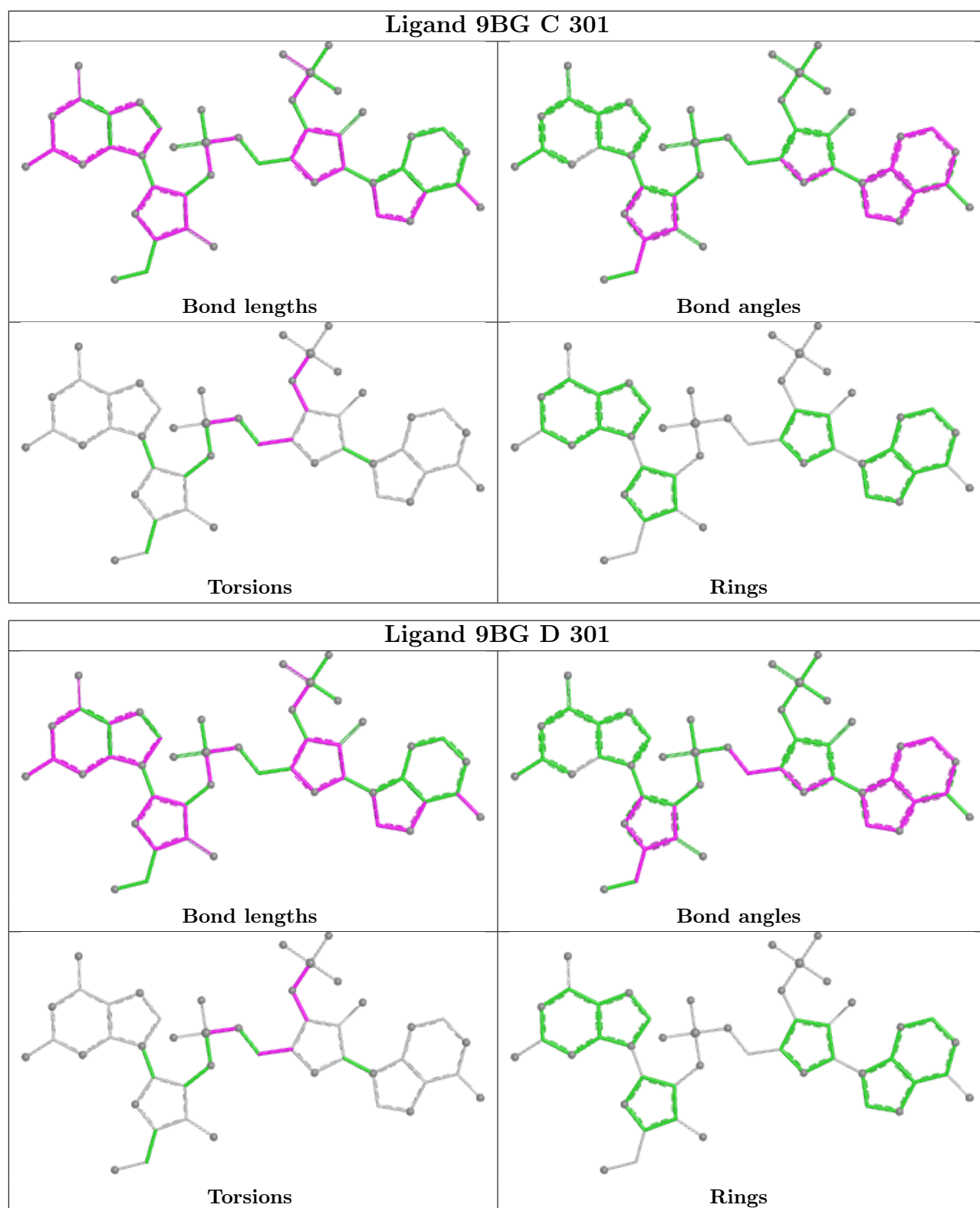
Mol	Chain	Res	Type	Clashes	Symm-Clashes
2	E	301	9BG	2	0
2	B	301	9BG	2	0
2	A	301	9BG	1	0
2	C	301	9BG	2	0
2	D	301	9BG	3	0

The following is a two-dimensional graphical depiction of Mogul quality analysis of bond lengths, bond angles, torsion angles, and ring geometry for all instances of the Ligand of Interest. In addition, ligands with molecular weight > 250 and outliers as shown on the validation Tables will

also be included. For torsion angles, if less than 5% of the Mogul distribution of torsion angles is within 10 degrees of the torsion angle in question, then that torsion angle is considered an outlier. Any bond that is central to one or more torsion angles identified as an outlier by Mogul will be highlighted in the graph. For rings, the root-mean-square deviation (RMSD) between the ring in question and similar rings identified by Mogul is calculated over all ring torsion angles. If the average RMSD is greater than 60 degrees and the minimal RMSD between the ring in question and any Mogul-identified rings is also greater than 60 degrees, then that ring is considered an outlier. The outliers are highlighted in purple. The color gray indicates Mogul did not find sufficient equivalents in the CSD to analyse the geometry.







5.7 Other polymers [i](#)

There are no such residues in this entry.

5.8 Polymer linkage issues

There are no chain breaks in this entry.

6 Fit of model and data [i](#)

6.1 Protein, DNA and RNA chains [i](#)

In the following table, the column labelled ‘#RSRZ> 2’ contains the number (and percentage) of RSRZ outliers, followed by percent RSRZ outliers for the chain as percentile scores relative to all X-ray entries and entries of similar resolution. The OWAB column contains the minimum, median, 95th percentile and maximum values of the occupancy-weighted average B-factor per residue. The column labelled ‘Q< 0.9’ lists the number of (and percentage) of residues with an average occupancy less than 0.9.

Mol	Chain	Analysed	<RSRZ>	#RSRZ>2	OWAB(Å ²)	Q<0.9
1	A	195/220 (88%)	-0.04	0 100 100	39, 53, 78, 84	0
1	B	195/220 (88%)	-0.04	1 (0%) 87 88	40, 53, 76, 85	0
1	C	195/220 (88%)	0.10	1 (0%) 87 88	44, 62, 102, 111	0
1	D	195/220 (88%)	0.21	1 (0%) 87 88	50, 70, 98, 104	0
1	E	195/220 (88%)	0.30	1 (0%) 87 88	58, 77, 102, 110	0
All	All	975/1100 (88%)	0.11	4 (0%) 88 90	39, 65, 95, 111	0

All (4) RSRZ outliers are listed below:

Mol	Chain	Res	Type	RSRZ
1	E	194	PRO	2.3
1	C	113	CYS	2.3
1	D	194	PRO	2.3
1	B	113	CYS	2.0

6.2 Non-standard residues in protein, DNA, RNA chains [i](#)

There are no non-standard protein/DNA/RNA residues in this entry.

6.3 Carbohydrates [i](#)

There are no oligosaccharides in this entry.

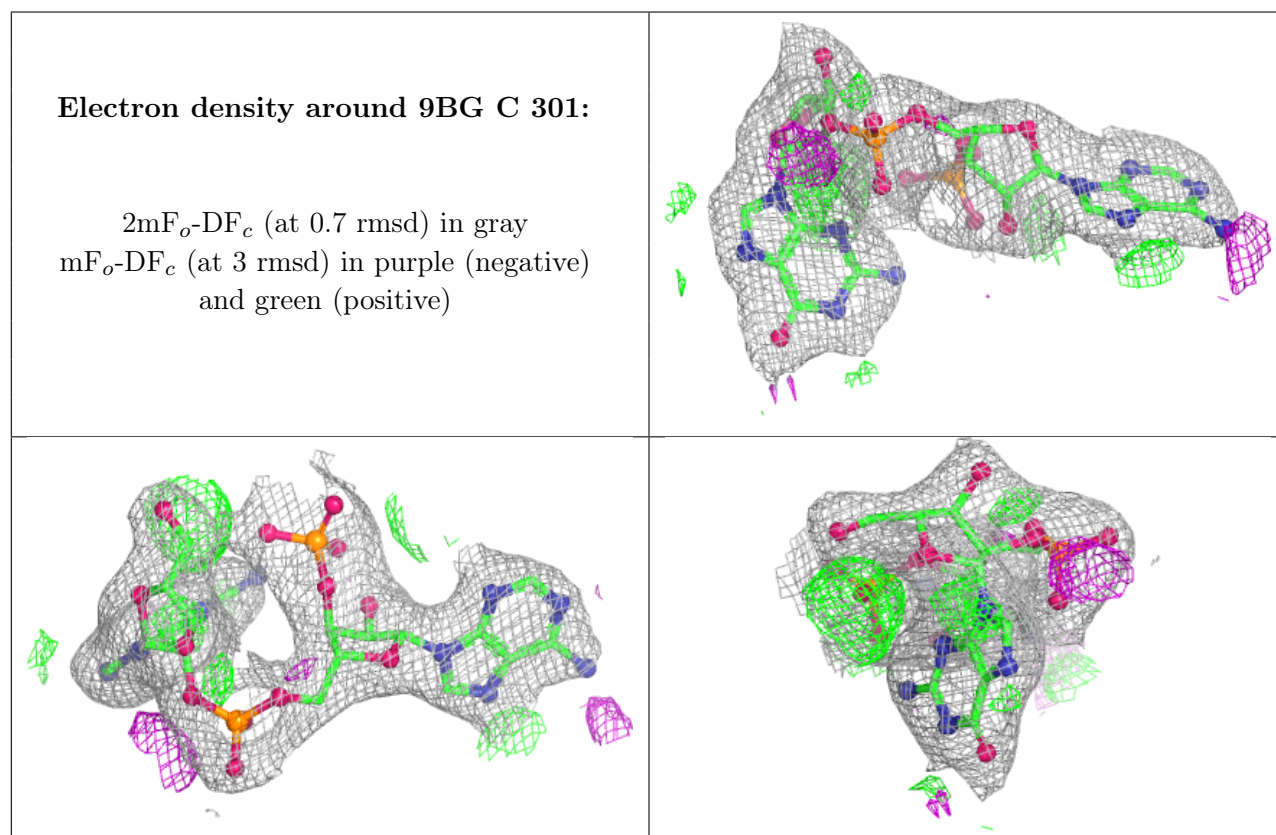
6.4 Ligands [i](#)

In the following table, the Atoms column lists the number of modelled atoms in the group and the number defined in the chemical component dictionary. The B-factors column lists the minimum,

median, 95th percentile and maximum values of B factors of atoms in the group. The column labelled 'Q< 0.9' lists the number of atoms with occupancy less than 0.9.

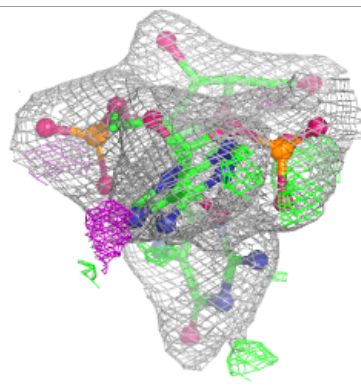
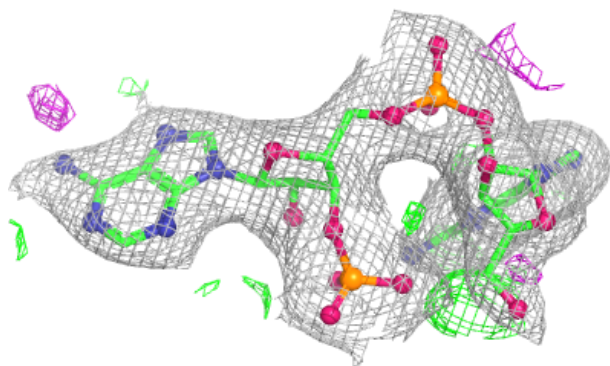
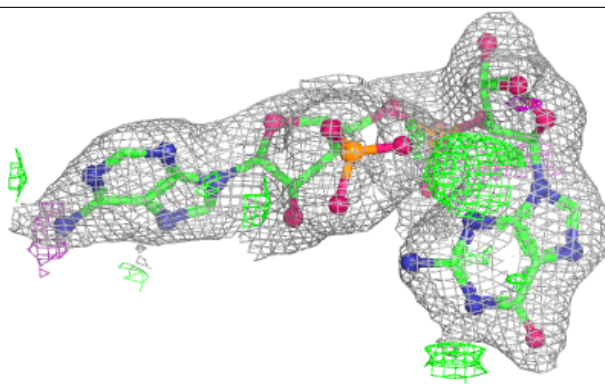
Mol	Type	Chain	Res	Atoms	RSCC	RSR	B-factors(Å ²)	Q<0.9
2	9BG	C	301	46/46	0.94	0.08	53,65,79,81	0
2	9BG	E	301	46/46	0.94	0.08	57,69,76,80	0
2	9BG	D	301	46/46	0.95	0.08	48,61,67,70	0
2	9BG	B	301	46/46	0.96	0.07	39,49,55,64	0
2	9BG	A	301	46/46	0.96	0.07	41,49,56,69	0

The following is a graphical depiction of the model fit to experimental electron density of all instances of the Ligand of Interest. In addition, ligands with molecular weight > 250 and outliers as shown on the geometry validation Tables will also be included. Each fit is shown from different orientation to approximate a three-dimensional view.

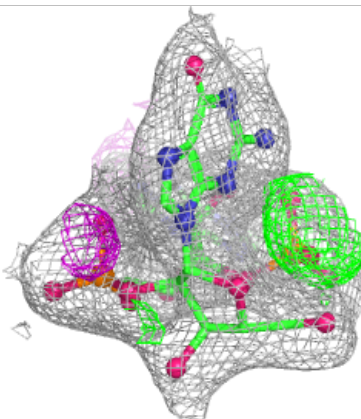
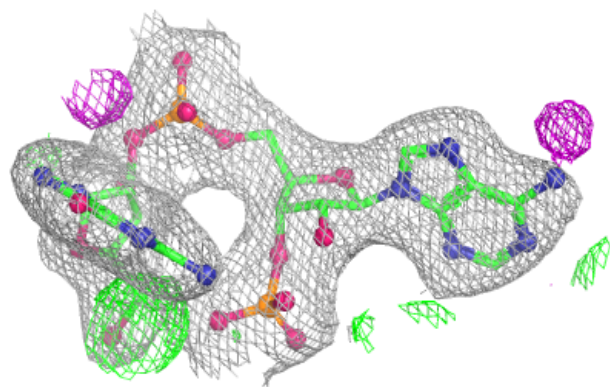
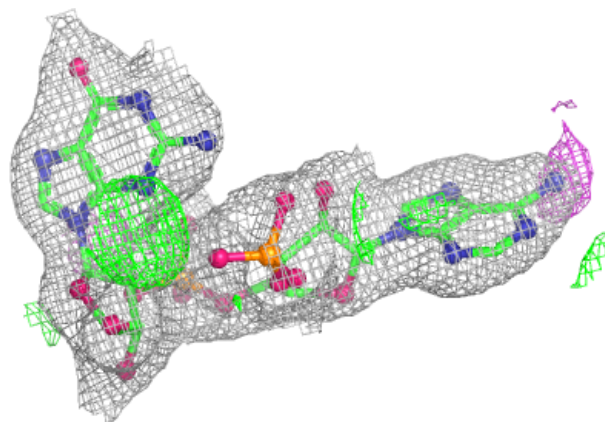


Electron density around 9BG E 301:

$2mF_o-DF_c$ (at 0.7 rmsd) in gray
 mF_o-DF_c (at 3 rmsd) in purple (negative)
and green (positive)

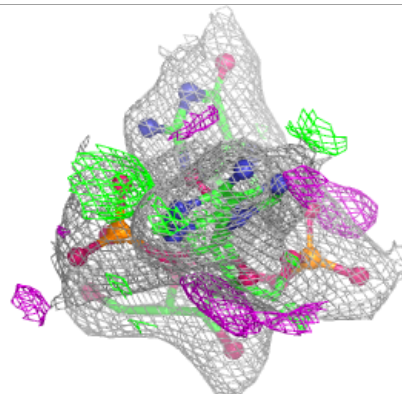
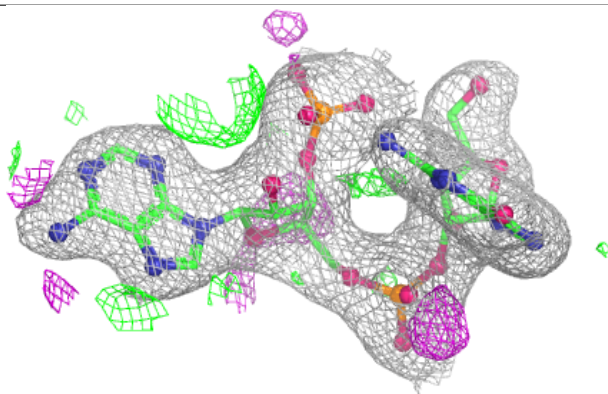
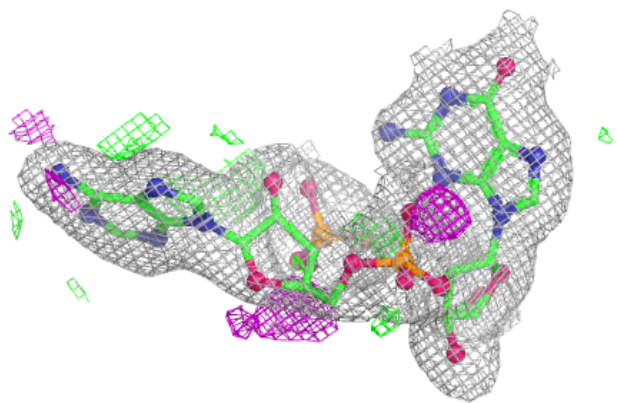
**Electron density around 9BG D 301:**

$2mF_o-DF_c$ (at 0.7 rmsd) in gray
 mF_o-DF_c (at 3 rmsd) in purple (negative)
and green (positive)

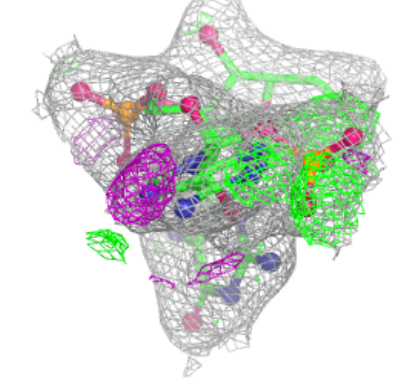
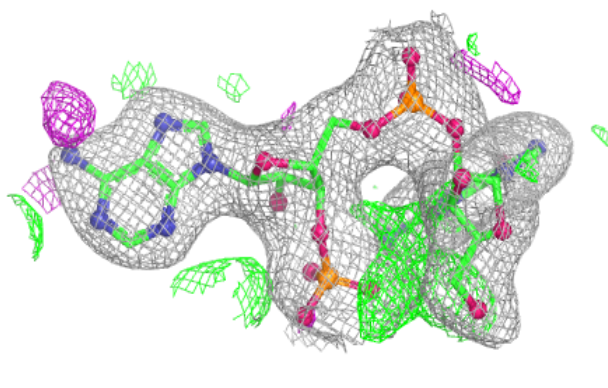
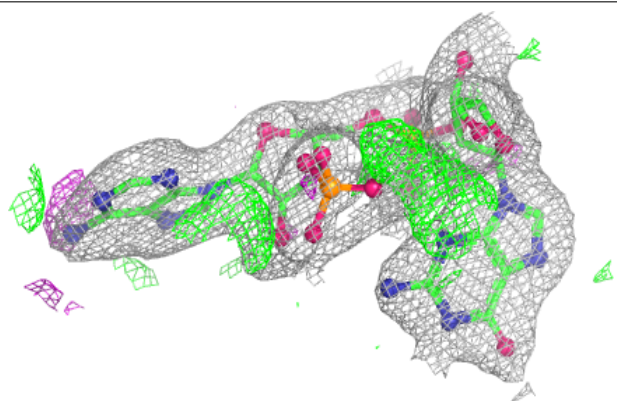


Electron density around 9BG B 301:

$2mF_o-DF_c$ (at 0.7 rmsd) in gray
 mF_o-DF_c (at 3 rmsd) in purple (negative)
and green (positive)

**Electron density around 9BG A 301:**

$2mF_o-DF_c$ (at 0.7 rmsd) in gray
 mF_o-DF_c (at 3 rmsd) in purple (negative)
and green (positive)



6.5 Other polymers [i](#)

There are no such residues in this entry.