



# Full wwPDB X-ray Structure Validation Report ⓘ

Mar 8, 2026 – 12:59 PM UTC

PDB ID : 7EBA / pdb\_00007eba  
Title : Co-crystal of kurarinone with sEH  
Authors : Sun, C.P.; Ma, X.C.  
Deposited on : 2021-03-09  
Resolution : 2.30 Å(reported)

This is a Full wwPDB X-ray Structure Validation Report for a publicly released PDB entry.

We welcome your comments at [validation@mail.wwpdb.org](mailto:validation@mail.wwpdb.org)

A user guide is available at

<https://www.wwpdb.org/validation/2017/XrayValidationReportHelp>

with specific help available everywhere you see the ⓘ symbol.

The types of validation reports are described at

<http://www.wwpdb.org/validation/2017/FAQs#types>.

---

The following versions of software and data (see [references ⓘ](#)) were used in the production of this report:

MolProbity : 4-5-2 with Phenix2.0  
Mogul : 2022.3.0, CSD as543be (2022)  
Xtriage (Phenix) : 2.0  
EDS : 3.0  
Buster-report : wwPDB partial adaption of 1.1.7 (2018)  
Percentile statistics : 20250101.v01 (using entries in the PDB archive January 1st 2025)  
CCP4 : 9.0.010 (Gargrove)  
Density-Fitness : 1.0.12  
Ideal geometry (proteins) : Engh & Huber (2001)  
Ideal geometry (DNA, RNA) : Parkinson et al. (1996)  
Validation Pipeline (wwPDB-VP) : 2.49

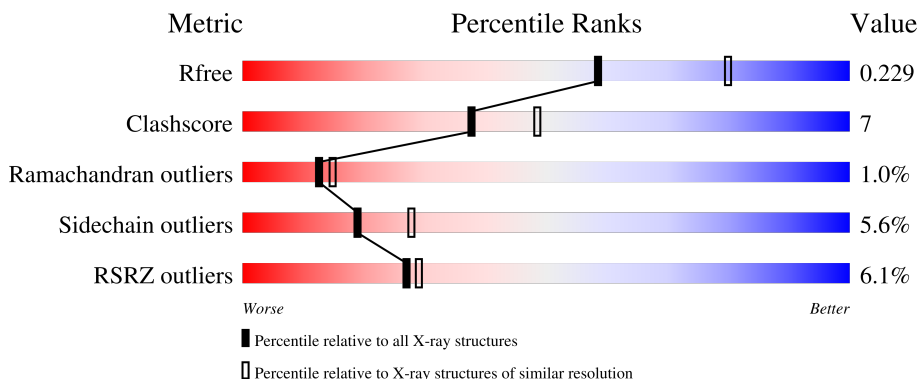
# 1 Overall quality at a glance

The following experimental techniques were used to determine the structure:

*X-RAY DIFFRACTION*

The reported resolution of this entry is 2.30 Å.

Percentile scores (ranging between 0-100) for global validation metrics of the entry are shown in the following graphic. The table shows the number of entries on which the scores are based.



Metric	Whole archive (#Entries)	Similar resolution (#Entries, resolution range(Å))
$R_{free}$	180053	6319 (2.30-2.30)
Clashscore	190562	6919 (2.30-2.30)
Ramachandran outliers	187476	6854 (2.30-2.30)
Sidechain outliers	187428	6854 (2.30-2.30)
RSRZ outliers	180081	6325 (2.30-2.30)

The table below summarises the geometric issues observed across the polymeric chains and their fit to the electron density. The red, orange, yellow and green segments of the lower bar indicate the fraction of residues that contain outliers for  $\geq 3$ , 2, 1 and 0 types of geometric quality criteria respectively. A grey segment represents the fraction of residues that are not modelled. The numeric value for each fraction is indicated below the corresponding segment, with a dot representing fractions  $\leq 5\%$ . The upper red bar (where present) indicates the fraction of residues that have poor fit to the electron density. The numeric value is given above the bar.

Mol	Chain	Length	Quality of chain
1	A	332	 5% 75% 17% • 5%
1	B	332	 7% 81% 14% • •

## 2 Entry composition

There are 3 unique types of molecules in this entry. The entry contains 5428 atoms, of which 0 are hydrogens and 0 are deuteriums.

In the tables below, the ZeroOcc column contains the number of atoms modelled with zero occupancy, the AltConf column contains the number of residues with at least one atom in alternate conformation and the Trace column contains the number of residues modelled with at most 2 atoms.

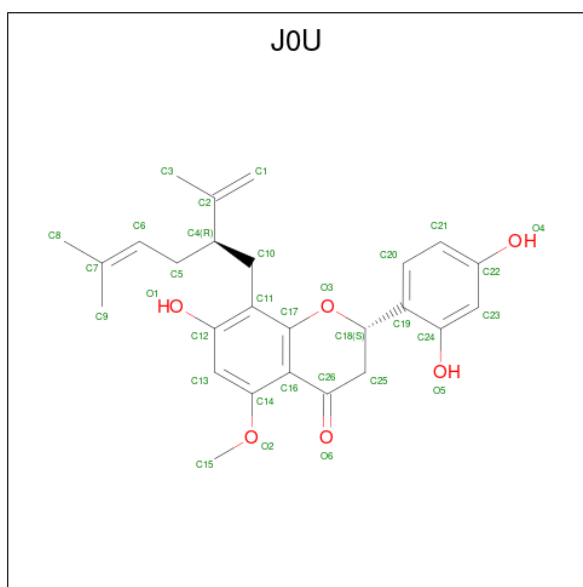
- Molecule 1 is a protein called Bifunctional epoxide hydrolase 2.

Mol	Chain	Residues	Atoms					ZeroOcc	AltConf	Trace
			Total	C	N	O	S			
1	A	316	2544	1635	426	460	23	0	0	0
1	B	319	2570	1649	433	465	23	0	0	0

There are 12 discrepancies between the modelled and reference sequences:

Chain	Residue	Modelled	Actual	Comment	Reference
A	224	HIS	-	expression tag	UNP P34913
A	225	HIS	-	expression tag	UNP P34913
A	226	HIS	-	expression tag	UNP P34913
A	227	HIS	-	expression tag	UNP P34913
A	228	HIS	-	expression tag	UNP P34913
A	229	HIS	-	expression tag	UNP P34913
B	224	HIS	-	expression tag	UNP P34913
B	225	HIS	-	expression tag	UNP P34913
B	226	HIS	-	expression tag	UNP P34913
B	227	HIS	-	expression tag	UNP P34913
B	228	HIS	-	expression tag	UNP P34913
B	229	HIS	-	expression tag	UNP P34913

- Molecule 2 is (2S)-2-[2,4-bis(oxidanyl)phenyl]-5-methoxy-8-[(2R)-5-methyl-2-prop-1-en-2-yl-hex-4-enyl]-7-oxidanyl-2,3-dihydrochromen-4-one (CCD ID: J0U) (formula: C<sub>26</sub>H<sub>30</sub>O<sub>6</sub>) (labeled as "Ligand of Interest" by depositor).



Mol	Chain	Residues	Atoms		ZeroOcc	AltConf	
2	A	1	Total	C	O	0	0
			32	26	6		
2	B	1	Total	C	O	0	0
			32	26	6		

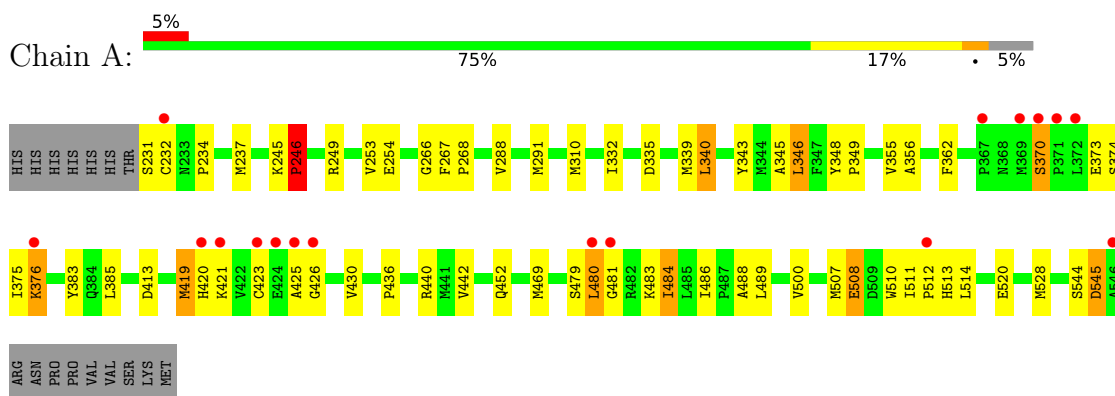
- Molecule 3 is water.

Mol	Chain	Residues	Atoms		ZeroOcc	AltConf
3	A	123	Total	O	0	0
			123	123		
3	B	127	Total	O	0	0
			127	127		

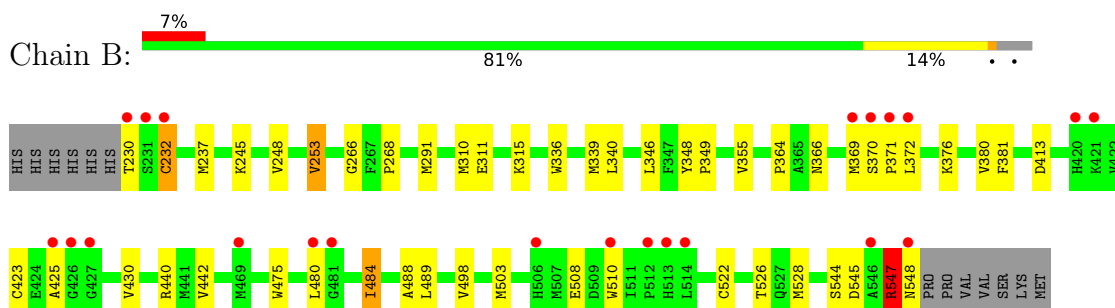
### 3 Residue-property plots [i](#)

These plots are drawn for all protein, RNA, DNA and oligosaccharide chains in the entry. The first graphic for a chain summarises the proportions of the various outlier classes displayed in the second graphic. The second graphic shows the sequence view annotated by issues in geometry and electron density. Residues are color-coded according to the number of geometric quality criteria for which they contain at least one outlier: green = 0, yellow = 1, orange = 2 and red = 3 or more. A red dot above a residue indicates a poor fit to the electron density ( $RSRZ > 2$ ). Stretches of 2 or more consecutive residues without any outlier are shown as a green connector. Residues present in the sample, but not in the model, are shown in grey.

- Molecule 1: Bifunctional epoxide hydrolase 2



- Molecule 1: Bifunctional epoxide hydrolase 2



## 4 Data and refinement statistics

Property	Value	Source
Space group	C 1 2 1	Depositor
Cell constants a, b, c, $\alpha$ , $\beta$ , $\gamma$	133.70Å 80.44Å 88.73Å 90.00° 127.37° 90.00°	Depositor
Resolution (Å)	40.25 – 2.30 40.25 – 2.30	Depositor EDS
% Data completeness (in resolution range)	95.2 (40.25-2.30) 95.3 (40.25-2.30)	Depositor EDS
$R_{merge}$	0.07	Depositor
$R_{sym}$	(Not available)	Depositor
$\langle I/\sigma(I) \rangle$ <sup>1</sup>	4.51 (at 2.29Å)	Xtrriage
Refinement program	PHENIX	Depositor
R, $R_{free}$	0.180 , 0.229 0.182 , 0.229	Depositor DCC
$R_{free}$ test set	1514 reflections (4.54%)	wwPDB-VP
Wilson B-factor (Å <sup>2</sup> )	32.1	Xtrriage
Anisotropy	0.027	Xtrriage
Bulk solvent $k_{sol}$ (e/Å <sup>3</sup> ), $B_{sol}$ (Å <sup>2</sup> )	0.36 , 40.1	EDS
L-test for twinning <sup>2</sup>	$\langle  L  \rangle = 0.49$ , $\langle L^2 \rangle = 0.33$	Xtrriage
Estimated twinning fraction	No twinning to report.	Xtrriage
$F_o, F_c$ correlation	0.95	EDS
Total number of atoms	5428	wwPDB-VP
Average B, all atoms (Å <sup>2</sup> )	38.0	wwPDB-VP

Xtrriage's analysis on translational NCS is as follows: *The largest off-origin peak in the Patterson function is 5.34% of the height of the origin peak. No significant pseudotranslation is detected.*

<sup>1</sup>Intensities estimated from amplitudes.

<sup>2</sup>Theoretical values of  $\langle |L| \rangle$ ,  $\langle L^2 \rangle$  for acentric reflections are 0.5, 0.333 respectively for untwinned datasets, and 0.375, 0.2 for perfectly twinned datasets.

## 5 Model quality [i](#)

### 5.1 Standard geometry [i](#)

Bond lengths and bond angles in the following residue types are not validated in this section: JOU

The Z score for a bond length (or angle) is the number of standard deviations the observed value is removed from the expected value. A bond length (or angle) with  $|Z| > 5$  is considered an outlier worth inspection. RMSZ is the root-mean-square of all Z scores of the bond lengths (or angles).

Mol	Chain	Bond lengths		Bond angles	
		RMSZ	# Z  >5	RMSZ	# Z  >5
1	A	1.04	0/2620	1.35	1/3554 (0.0%)
1	B	1.04	1/2646 (0.0%)	1.37	0/3589
All	All	1.04	1/5266 (0.0%)	1.36	1/7143 (0.0%)

Chiral center outliers are detected by calculating the chiral volume of a chiral center and verifying if the center is modelled as a planar moiety or with the opposite hand. A planarity outlier is detected by checking planarity of atoms in a peptide group, atoms in a mainchain group or atoms of a sidechain that are expected to be planar.

Mol	Chain	#Chirality outliers	#Planarity outliers
1	A	0	2
1	B	0	2
All	All	0	4

All (1) bond length outliers are listed below:

Mol	Chain	Res	Type	Atoms	Z	Observed(Å)	Ideal(Å)
1	B	266	GLY	C-O	5.79	1.29	1.24

All (1) bond angle outliers are listed below:

Mol	Chain	Res	Type	Atoms	Z	Observed(°)	Ideal(°)
1	A	234	PRO	N-CA-C	5.30	121.65	113.75

There are no chirality outliers.

All (4) planarity outliers are listed below:

Mol	Chain	Res	Type	Group
1	A	291	MET	Peptide

*Continued on next page...*

*Continued from previous page...*

Mol	Chain	Res	Type	Group
1	A	481	GLY	Peptide
1	B	232	CYS	Peptide
1	B	291	MET	Peptide

## 5.2 Too-close contacts [i](#)

In the following table, the Non-H and H(model) columns list the number of non-hydrogen atoms and hydrogen atoms in the chain respectively. The H(added) column lists the number of hydrogen atoms added and optimized by MolProbity. The Clashes column lists the number of clashes within the asymmetric unit, whereas Symm-Clashes lists symmetry-related clashes.

Mol	Chain	Non-H	H(model)	H(added)	Clashes	Symm-Clashes
1	A	2544	0	2471	43	0
1	B	2570	0	2497	28	0
2	A	32	0	0	0	0
2	B	32	0	0	0	0
3	A	123	0	0	13	0
3	B	127	0	0	1	0
All	All	5428	0	4968	71	0

The all-atom clashscore is defined as the number of clashes found per 1000 atoms (including hydrogen atoms). The all-atom clashscore for this structure is 7.

All (71) close contacts within the same asymmetric unit are listed below, sorted by their clash magnitude.

Atom-1	Atom-2	Interatomic distance (Å)	Clash overlap (Å)
1:B:528:MET:HE3	3:B:774:HOH:O	1.55	1.05
1:A:232:CYS:SG	3:A:817:HOH:O	2.13	1.04
1:A:528:MET:HE3	3:A:801:HOH:O	1.63	0.97
1:A:512:PRO:CD	3:A:795:HOH:O	2.14	0.96
1:A:512:PRO:HD3	3:A:795:HOH:O	1.69	0.91
1:B:230:THR:N	1:B:237:MET:SD	2.50	0.84
1:B:237:MET:HE2	1:B:253:VAL:HG11	1.62	0.81
1:A:528:MET:HB2	3:A:801:HOH:O	1.83	0.77
1:A:511:ILE:HA	3:A:795:HOH:O	1.86	0.74
1:A:413:ASP:OD2	1:A:440:ARG:NH2	2.23	0.71
1:A:512:PRO:HD2	3:A:795:HOH:O	1.88	0.68
1:B:547:ARG:O	1:B:548:ASN:HB2	1.95	0.65
1:A:375:ILE:HG13	1:A:469:MET:HE1	1.79	0.65
1:B:413:ASP:OD2	1:B:440:ARG:NH2	2.32	0.63

*Continued on next page...*

*Continued from previous page...*

Atom-1	Atom-2	Interatomic distance (Å)	Clash overlap (Å)
1:B:366:ASN:HD22	1:B:369:MET:HG2	1.61	0.63
1:B:372:LEU:HG	1:B:376:LYS:HE2	1.82	0.62
1:A:513:HIS:HE1	3:A:795:HOH:O	1.83	0.60
1:B:413:ASP:CG	1:B:440:ARG:HH22	2.10	0.60
1:A:500:VAL:CG1	3:A:731:HOH:O	2.50	0.60
1:A:436:PRO:O	3:A:702:HOH:O	2.17	0.59
1:B:237:MET:CE	1:B:253:VAL:CG1	2.82	0.57
1:B:237:MET:CE	1:B:253:VAL:HG11	2.33	0.57
1:A:245:LYS:HB2	1:A:246:PRO:HD2	1.85	0.57
1:A:413:ASP:CG	1:A:440:ARG:HH22	2.13	0.56
1:B:425:ALA:O	1:B:430:VAL:HG21	2.06	0.56
1:A:425:ALA:N	3:A:710:HOH:O	2.38	0.56
1:A:545:ASP:N	1:A:545:ASP:OD1	2.39	0.56
1:B:237:MET:HE2	1:B:253:VAL:CG1	2.34	0.56
1:A:376:LYS:HE2	1:A:385:LEU:HD11	1.88	0.55
1:A:383:TYR:CD1	1:A:419:MET:HG2	2.42	0.55
1:B:370:SER:OG	1:B:371:PRO:HD2	2.07	0.55
1:A:544:SER:OG	1:A:545:ASP:N	2.41	0.54
1:B:381:PHE:CZ	1:B:503:MET:HE1	2.43	0.53
1:A:355:VAL:O	1:A:488:ALA:HA	2.10	0.51
1:B:310:MET:HE3	1:B:336:TRP:CZ3	2.45	0.51
1:A:513:HIS:CE1	3:A:795:HOH:O	2.60	0.51
1:B:346:LEU:HA	1:B:484:ILE:HD13	1.92	0.50
1:A:383:TYR:HB3	1:A:419:MET:HG3	1.93	0.50
1:B:544:SER:OG	1:B:545:ASP:OD1	2.14	0.49
1:A:254:GLU:HA	1:A:288:VAL:O	2.13	0.49
1:A:362:PHE:HB3	1:A:507:MET:HE3	1.95	0.48
1:A:426:GLY:HA3	1:A:430:VAL:HG11	1.96	0.48
1:A:500:VAL:HG13	3:A:731:HOH:O	2.10	0.47
1:B:348:TYR:N	1:B:349:PRO:CD	2.77	0.47
1:B:237:MET:HE3	1:B:253:VAL:HG13	1.94	0.47
1:B:355:VAL:O	1:B:488:ALA:HA	2.14	0.47
1:A:266:GLY:HA3	1:A:335:ASP:HB3	1.96	0.47
1:A:340:LEU:C	1:A:340:LEU:HD13	2.40	0.47
1:B:245:LYS:HG2	1:B:248:VAL:HB	1.97	0.46
1:A:484:ILE:HG22	1:A:484:ILE:O	2.15	0.46
1:A:513:HIS:O	1:A:514:LEU:C	2.58	0.45
1:B:311:GLU:HG3	1:B:475:TRP:CE2	2.52	0.45
1:B:311:GLU:HG2	1:B:315:LYS:HE2	1.99	0.45
1:B:508:GLU:OE2	1:B:508:GLU:N	2.48	0.45
1:A:245:LYS:O	1:A:246:PRO:C	2.59	0.44

*Continued on next page...*

Continued from previous page...

Atom-1	Atom-2	Interatomic distance (Å)	Clash overlap (Å)
1:A:348:TYR:N	1:A:349:PRO:CD	2.80	0.44
1:A:510:TRP:C	1:A:511:ILE:HG13	2.42	0.44
1:A:479:SER:C	1:A:480:LEU:HG	2.41	0.44
1:A:310:MET:HG3	1:A:343:TYR:CE2	2.53	0.44
1:A:508:GLU:OE2	1:A:508:GLU:N	2.50	0.44
1:A:421:LYS:O	1:A:425:ALA:HB3	2.18	0.43
1:B:545:ASP:OD1	1:B:545:ASP:N	2.49	0.43
1:A:267:PHE:CD1	1:A:267:PHE:C	2.97	0.43
1:A:237:MET:HE2	1:A:253:VAL:HG11	2.01	0.42
1:B:310:MET:HE3	1:B:336:TRP:CE3	2.55	0.42
1:B:364:PRO:HG2	1:B:510:TRP:CE2	2.55	0.41
1:A:332:ILE:HA	1:A:356:ALA:O	2.20	0.41
1:B:522:CYS:SG	1:B:526:THR:HG23	2.61	0.41
1:A:346:LEU:HD23	1:A:346:LEU:HA	1.92	0.40
1:A:345:ALA:HB1	1:A:486:ILE:HD11	2.03	0.40
1:A:370:SER:OG	1:A:373:GLU:HG3	2.21	0.40

There are no symmetry-related clashes.

## 5.3 Torsion angles [i](#)

### 5.3.1 Protein backbone [i](#)

In the following table, the Percentiles column shows the percent Ramachandran outliers of the chain as a percentile score with respect to all X-ray entries followed by that with respect to entries of similar resolution.

The Analysed column shows the number of residues for which the backbone conformation was analysed, and the total number of residues.

Mol	Chain	Analysed	Favoured	Allowed	Outliers	Percentiles	
1	A	314/332 (95%)	298 (95%)	13 (4%)	3 (1%)	12	15
1	B	317/332 (96%)	299 (94%)	15 (5%)	3 (1%)	14	17
All	All	631/664 (95%)	597 (95%)	28 (4%)	6 (1%)	12	15

All (6) Ramachandran outliers are listed below:

Mol	Chain	Res	Type
1	B	232	CYS
1	A	420	HIS

Continued on next page...

*Continued from previous page...*

Mol	Chain	Res	Type
1	A	246	PRO
1	B	547	ARG
1	A	268	PRO
1	B	268	PRO

### 5.3.2 Protein sidechains [i](#)

In the following table, the Percentiles column shows the percent sidechain outliers of the chain as a percentile score with respect to all X-ray entries followed by that with respect to entries of similar resolution.

The Analysed column shows the number of residues for which the sidechain conformation was analysed, and the total number of residues.

Mol	Chain	Analysed	Rotameric	Outliers	Percentiles	
1	A	277/293 (94%)	257 (93%)	20 (7%)	13	18
1	B	280/293 (96%)	269 (96%)	11 (4%)	28	43
All	All	557/586 (95%)	526 (94%)	31 (6%)	19	28

All (31) residues with a non-rotameric sidechain are listed below:

Mol	Chain	Res	Type
1	A	231	SER
1	A	246	PRO
1	A	249	ARG
1	A	339	MET
1	A	340	LEU
1	A	346	LEU
1	A	370	SER
1	A	374	SER
1	A	376	LYS
1	A	419	MET
1	A	423	CYS
1	A	442	VAL
1	A	452	GLN
1	A	480	LEU
1	A	483	LYS
1	A	484	ILE
1	A	489	LEU
1	A	508	GLU
1	A	520	GLU

*Continued on next page...*

*Continued from previous page...*

Mol	Chain	Res	Type
1	A	545	ASP
1	B	253	VAL
1	B	339	MET
1	B	340	LEU
1	B	380	VAL
1	B	423	CYS
1	B	442	VAL
1	B	480	LEU
1	B	484	ILE
1	B	489	LEU
1	B	498	VAL
1	B	547	ARG

Sometimes sidechains can be flipped to improve hydrogen bonding and reduce clashes. All (9) such sidechains are listed below:

Mol	Chain	Res	Type
1	A	384	GLN
1	A	502	GLN
1	B	366	ASN
1	B	368	ASN
1	B	384	GLN
1	B	399	GLN
1	B	453	GLN
1	B	468	ASN
1	B	548	ASN

### 5.3.3 RNA [i](#)

There are no RNA molecules in this entry.

### 5.4 Non-standard residues in protein, DNA, RNA chains [i](#)

There are no non-standard protein/DNA/RNA residues in this entry.

### 5.5 Carbohydrates [i](#)

There are no oligosaccharides in this entry.

## 5.6 Ligand geometry [i](#)

2 ligands are modelled in this entry.

In the following table, the Counts columns list the number of bonds (or angles) for which Mogul statistics could be retrieved, the number of bonds (or angles) that are observed in the model and the number of bonds (or angles) that are defined in the Chemical Component Dictionary. The Link column lists molecule types, if any, to which the group is linked. The Z score for a bond length (or angle) is the number of standard deviations the observed value is removed from the expected value. A bond length (or angle) with  $|Z| > 2$  is considered an outlier worth inspection. RMSZ is the root-mean-square of all Z scores of the bond lengths (or angles).

Mol	Type	Chain	Res	Link	Bond lengths			Bond angles		
					Counts	RMSZ	# Z  > 2	Counts	RMSZ	# Z  > 2
2	J0U	A	601	-	34,34,34	0.54	0	47,49,49	0.98	4 (8%)
2	J0U	B	601	-	34,34,34	0.52	0	47,49,49	1.03	1 (2%)

In the following table, the Chirals column lists the number of chiral outliers, the number of chiral centers analysed, the number of these observed in the model and the number defined in the Chemical Component Dictionary. Similar counts are reported in the Torsion and Rings columns. '-' means no outliers of that kind were identified.

Mol	Type	Chain	Res	Link	Chirals	Torsions	Rings
2	J0U	A	601	-	-	7/19/31/31	0/3/3/3
2	J0U	B	601	-	-	6/19/31/31	0/3/3/3

There are no bond length outliers.

All (5) bond angle outliers are listed below:

Mol	Chain	Res	Type	Atoms	Z	Observed(°)	Ideal(°)
2	B	601	J0U	C17-O3-C18	-4.12	108.93	115.77
2	A	601	J0U	C17-O3-C18	-3.58	109.83	115.77
2	A	601	J0U	O3-C17-C16	-2.51	118.75	121.71
2	A	601	J0U	C17-C16-C26	-2.18	118.25	120.08
2	A	601	J0U	C11-C10-C4	-2.15	111.20	114.05

There are no chirality outliers.

All (13) torsion outliers are listed below:

Mol	Chain	Res	Type	Atoms
2	A	601	J0U	C5-C6-C7-C9
2	A	601	J0U	C5-C6-C7-C8
2	A	601	J0U	C25-C18-C19-C20

*Continued on next page...*

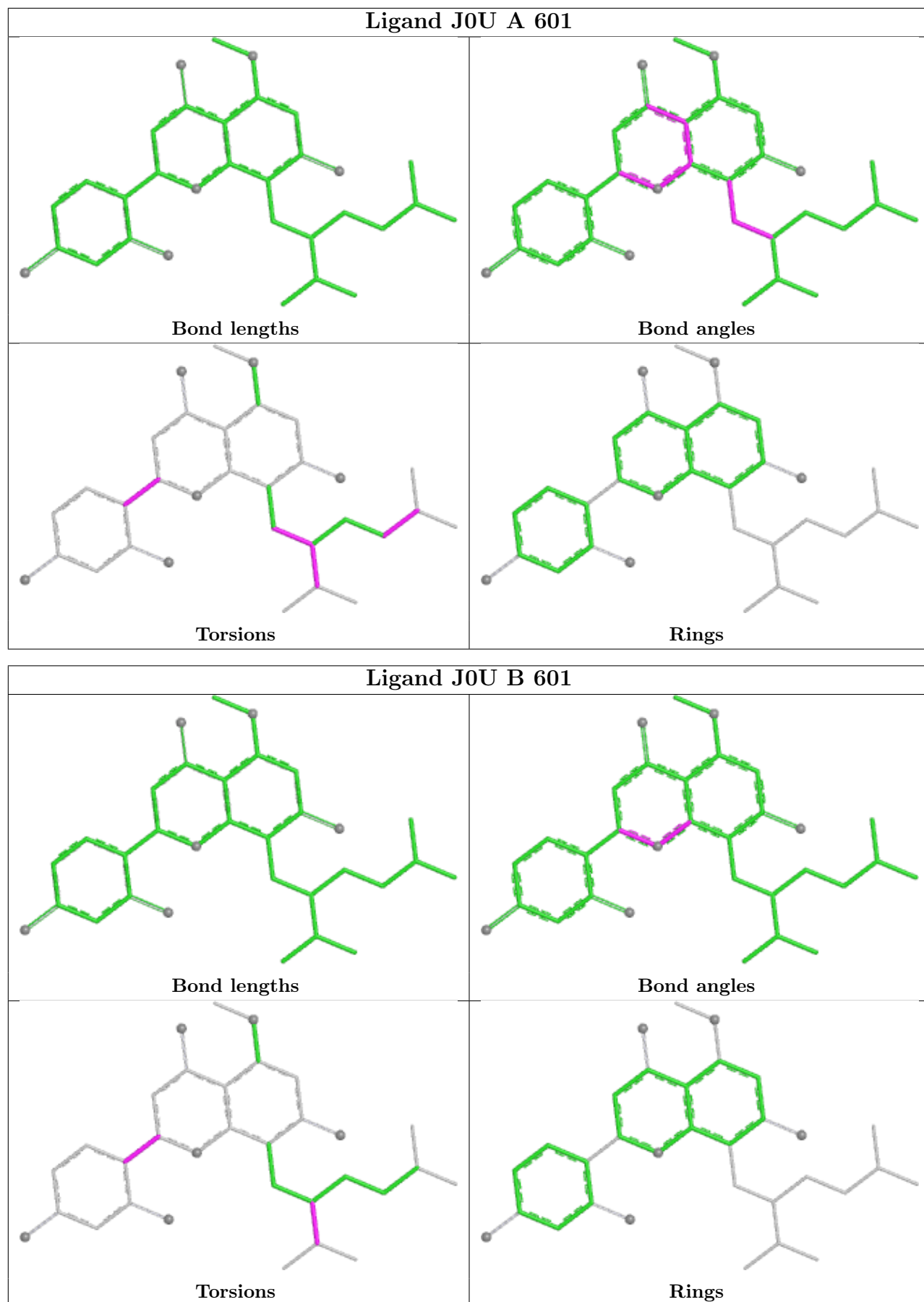
*Continued from previous page...*

Mol	Chain	Res	Type	Atoms
2	B	601	J0U	O3-C18-C19-C20
2	B	601	J0U	C25-C18-C19-C20
2	B	601	J0U	C1-C2-C4-C5
2	B	601	J0U	O3-C18-C19-C24
2	B	601	J0U	C25-C18-C19-C24
2	A	601	J0U	O3-C18-C19-C20
2	B	601	J0U	C3-C2-C4-C5
2	A	601	J0U	C3-C2-C4-C5
2	A	601	J0U	C11-C10-C4-C5
2	A	601	J0U	C3-C2-C4-C10

There are no ring outliers.

No monomer is involved in short contacts.

The following is a two-dimensional graphical depiction of Mogul quality analysis of bond lengths, bond angles, torsion angles, and ring geometry for all instances of the Ligand of Interest. In addition, ligands with molecular weight > 250 and outliers as shown on the validation Tables will also be included. For torsion angles, if less than 5% of the Mogul distribution of torsion angles is within 10 degrees of the torsion angle in question, then that torsion angle is considered an outlier. Any bond that is central to one or more torsion angles identified as an outlier by Mogul will be highlighted in the graph. For rings, the root-mean-square deviation (RMSD) between the ring in question and similar rings identified by Mogul is calculated over all ring torsion angles. If the average RMSD is greater than 60 degrees and the minimal RMSD between the ring in question and any Mogul-identified rings is also greater than 60 degrees, then that ring is considered an outlier. The outliers are highlighted in purple. The color gray indicates Mogul did not find sufficient equivalents in the CSD to analyse the geometry.



## 5.7 Other polymers [i](#)

There are no such residues in this entry.

## 5.8 Polymer linkage issues [i](#)

There are no chain breaks in this entry.

## 6 Fit of model and data

### 6.1 Protein, DNA and RNA chains

In the following table, the column labelled ‘#RSRZ > 2’ contains the number (and percentage) of RSRZ outliers, followed by percent RSRZ outliers for the chain as percentile scores relative to all X-ray entries and entries of similar resolution. The OWAB column contains the minimum, median, 95<sup>th</sup> percentile and maximum values of the occupancy-weighted average B-factor per residue. The column labelled ‘Q < 0.9’ lists the number of (and percentage) of residues with an average occupancy less than 0.9.

Mol	Chain	Analysed	<RSRZ>	#RSRZ>2	OWAB(Å <sup>2</sup> )	Q<0.9
1	A	316/332 (95%)	0.01	17 (5%) 31 33	19, 30, 71, 120	0
1	B	319/332 (96%)	0.11	22 (6%) 23 25	19, 33, 82, 128	0
All	All	635/664 (95%)	0.06	39 (6%) 27 29	19, 32, 78, 128	0

All (39) RSRZ outliers are listed below:

Mol	Chain	Res	Type	RSRZ
1	B	230	THR	5.2
1	B	231	SER	4.8
1	B	510	TRP	4.5
1	A	425	ALA	4.3
1	A	420	HIS	4.3
1	B	371	PRO	4.1
1	B	420	HIS	3.8
1	B	480	LEU	3.8
1	A	376	LYS	3.7
1	B	369	MET	3.7
1	A	426	GLY	3.6
1	A	480	LEU	3.6
1	A	512	PRO	3.4
1	B	546	ALA	3.3
1	A	372	LEU	3.2
1	B	421	LYS	3.2
1	B	370	SER	3.0
1	B	372	LEU	2.8
1	B	469	MET	2.8
1	B	513	HIS	2.7
1	A	546	ALA	2.6
1	B	512	PRO	2.6
1	A	371	PRO	2.6
1	A	232	CYS	2.5

*Continued on next page...*

*Continued from previous page...*

Mol	Chain	Res	Type	RSRZ
1	A	481	GLY	2.5
1	A	370	SER	2.5
1	A	367	PRO	2.5
1	A	369	MET	2.4
1	B	427	GLY	2.4
1	B	425	ALA	2.3
1	B	548	ASN	2.3
1	A	421	LYS	2.3
1	B	481	GLY	2.3
1	A	424	GLU	2.3
1	B	232	CYS	2.2
1	B	514	LEU	2.1
1	A	423	CYS	2.0
1	B	506	HIS	2.0
1	B	426	GLY	2.0

## 6.2 Non-standard residues in protein, DNA, RNA chains [i](#)

There are no non-standard protein/DNA/RNA residues in this entry.

## 6.3 Carbohydrates [i](#)

There are no oligosaccharides in this entry.

## 6.4 Ligands [i](#)

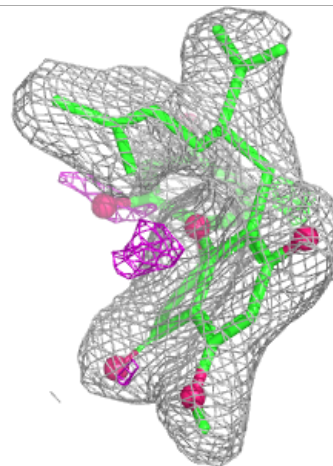
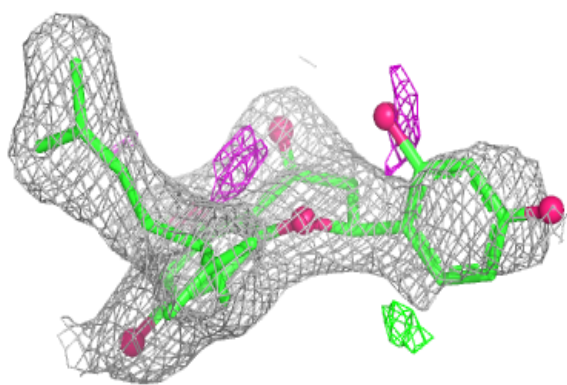
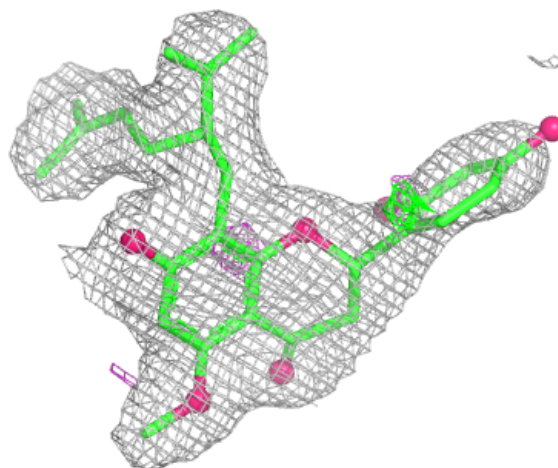
In the following table, the Atoms column lists the number of modelled atoms in the group and the number defined in the chemical component dictionary. The B-factors column lists the minimum, median, 95<sup>th</sup> percentile and maximum values of B factors of atoms in the group. The column labelled 'Q< 0.9' lists the number of atoms with occupancy less than 0.9.

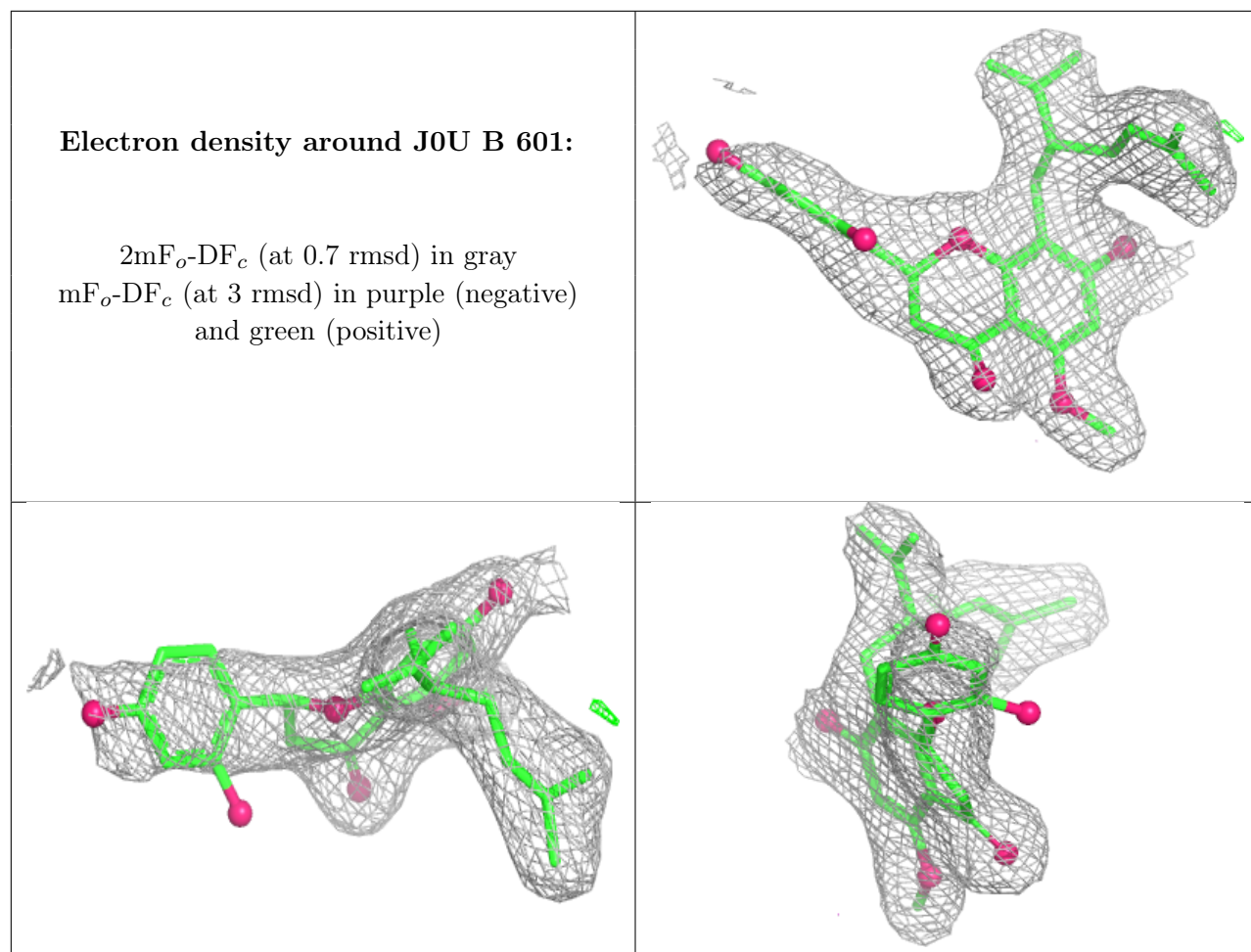
Mol	Type	Chain	Res	Atoms	RSCC	RSR	B-factors(Å <sup>2</sup> )	Q<0.9
2	J0U	A	601	32/32	0.92	0.12	30,37,79,95	0
2	J0U	B	601	32/32	0.93	0.11	30,38,83,92	0

The following is a graphical depiction of the model fit to experimental electron density of all instances of the Ligand of Interest. In addition, ligands with molecular weight > 250 and outliers as shown on the geometry validation Tables will also be included. Each fit is shown from different orientation to approximate a three-dimensional view.

**Electron density around J0U A 601:**

$2mF_o-DF_c$  (at 0.7 rmsd) in gray  
 $mF_o-DF_c$  (at 3 rmsd) in purple (negative)  
and green (positive)





## 6.5 Other polymers [i](#)

There are no such residues in this entry.