



Full wwPDB X-ray Structure Validation Report ⓘ

Mar 5, 2026 – 06:39 PM UTC

PDB ID : 1ECE / pdb_00001ece
Title : ACIDOTHERMUS CELLULOLYTICUS ENDOCELLULASE E1 CATALYTIC DOMAIN IN COMPLEX WITH A CELLOTETRAOSE
Authors : Sakon, J.; Thomas, S.R.; Himmel, M.E.; Karplus, P.A.
Deposited on : 1996-04-04
Resolution : 2.40 Å(reported)

This is a Full wwPDB X-ray Structure Validation Report for a publicly released PDB entry.

We welcome your comments at validation@mail.wwpdb.org

A user guide is available at

<https://www.wwpdb.org/validation/2017/XrayValidationReportHelp>

with specific help available everywhere you see the ⓘ symbol.

The types of validation reports are described at

<http://www.wwpdb.org/validation/2017/FAQs#types>.

The following versions of software and data (see [references ⓘ](#)) were used in the production of this report:

MolProbity : 4-5-2 with Phenix2.0
Mogul : 2022.3.0, CSD as543be (2022)
Xtriage (Phenix) : 2.0
EDS : 3.0
Percentile statistics : 20250101.v01 (using entries in the PDB archive January 1st 2025)
CCP4 : 9.0.010 (Gargrove)
Density-Fitness : 1.0.12
Ideal geometry (proteins) : Engh & Huber (2001)
Ideal geometry (DNA, RNA) : Parkinson et al. (1996)
Validation Pipeline (wwPDB-VP) : 2.49

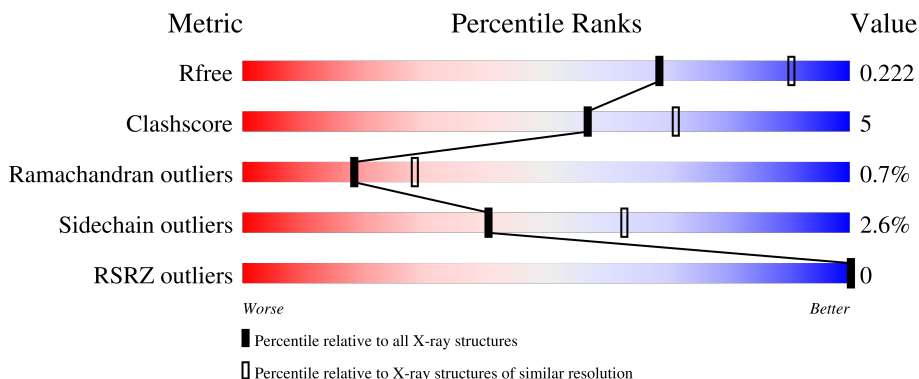
1 Overall quality at a glance

The following experimental techniques were used to determine the structure:

X-RAY DIFFRACTION

The reported resolution of this entry is 2.40 Å.

Percentile scores (ranging between 0-100) for global validation metrics of the entry are shown in the following graphic. The table shows the number of entries on which the scores are based.



Metric	Whole archive (#Entries)	Similar resolution (#Entries, resolution range(Å))
R_{free}	180053	4912 (2.40-2.40)
Clashscore	190562	5391 (2.40-2.40)
Ramachandran outliers	187476	5320 (2.40-2.40)
Sidechain outliers	187428	5321 (2.40-2.40)
RSRZ outliers	180081	4916 (2.40-2.40)

The table below summarises the geometric issues observed across the polymeric chains and their fit to the electron density. The red, orange, yellow and green segments of the lower bar indicate the fraction of residues that contain outliers for ≥ 3 , 2, 1 and 0 types of geometric quality criteria respectively. A grey segment represents the fraction of residues that are not modelled. The numeric value for each fraction is indicated below the corresponding segment, with a dot representing fractions $\leq 5\%$. The upper red bar (where present) indicates the fraction of residues that have poor fit to the electron density. The numeric value is given above the bar.

Mol	Chain	Length	Quality of chain
1	A	358	81% 16% .
1	B	358	84% 14% .
2	C	4	75% 25%
2	D	4	75% 25%

2 Entry composition [i](#)

There are 3 unique types of molecules in this entry. The entry contains 6167 atoms, of which 0 are hydrogens and 0 are deuteriums.

In the tables below, the ZeroOcc column contains the number of atoms modelled with zero occupancy, the AltConf column contains the number of residues with at least one atom in alternate conformation and the Trace column contains the number of residues modelled with at most 2 atoms.

- Molecule 1 is a protein called ENDOCELLULASE E1.

Mol	Chain	Residues	Atoms					ZeroOcc	AltConf	Trace
			Total	C	N	O	S			
1	A	358	2851	1826	480	536	9	0	0	0
1	B	358	2851	1826	480	536	9	0	0	0

- Molecule 2 is an oligosaccharide called beta-D-glucopyranose-(1-4)-beta-D-glucopyranose-(1-4)-beta-D-glucopyranose-(1-4)-beta-D-glucopyranose.



Mol	Chain	Residues	Atoms			ZeroOcc	AltConf	Trace
			Total	C	O			
2	C	4	45	24	21	0	0	0
2	D	4	45	24	21	0	0	0

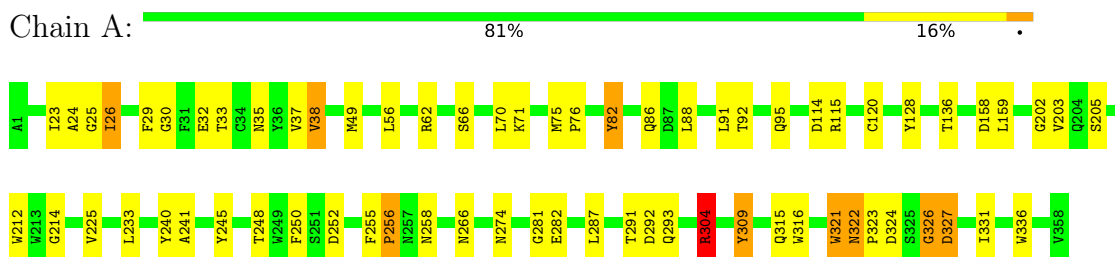
- Molecule 3 is water.

Mol	Chain	Residues	Atoms		ZeroOcc	AltConf
			Total	O		
3	A	187	187	187	0	0
3	B	188	188	188	0	0

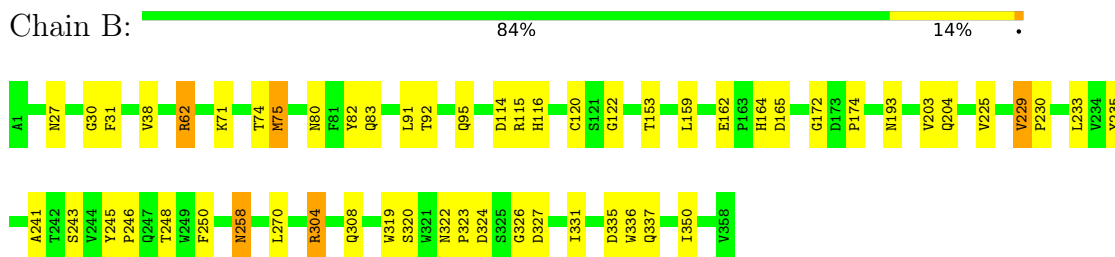
3 Residue-property plots [i](#)

These plots are drawn for all protein, RNA, DNA and oligosaccharide chains in the entry. The first graphic for a chain summarises the proportions of the various outlier classes displayed in the second graphic. The second graphic shows the sequence view annotated by issues in geometry and electron density. Residues are color-coded according to the number of geometric quality criteria for which they contain at least one outlier: green = 0, yellow = 1, orange = 2 and red = 3 or more. A red dot above a residue indicates a poor fit to the electron density ($RSRZ > 2$). Stretches of 2 or more consecutive residues without any outlier are shown as a green connector. Residues present in the sample, but not in the model, are shown in grey.

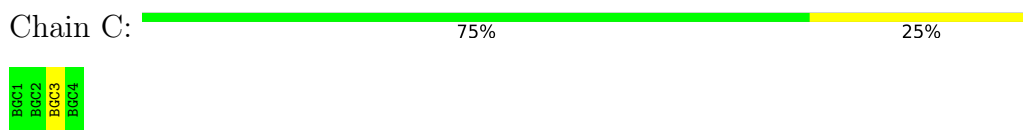
- Molecule 1: ENDOCELLULASE E1



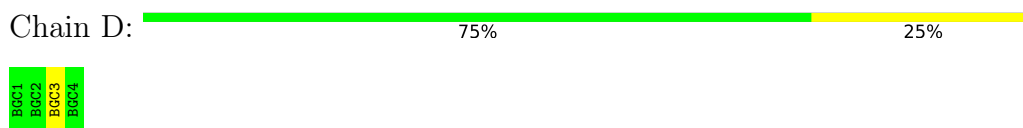
- Molecule 1: ENDOCELLULASE E1



- Molecule 2: beta-D-glucopyranose-(1-4)-beta-D-glucopyranose-(1-4)-beta-D-glucopyranose-(1-4)-beta-D-glucopyranose



- Molecule 2: beta-D-glucopyranose-(1-4)-beta-D-glucopyranose-(1-4)-beta-D-glucopyranose-(1-4)-beta-D-glucopyranose



4 Data and refinement statistics i

Property	Value	Source
Space group	P 32 2 1	Depositor
Cell constants a, b, c, α , β , γ	97.13Å 97.13Å 258.71Å 90.00° 90.00° 120.00°	Depositor
Resolution (Å)	10.00 – 2.40 10.00 – 2.43	Depositor EDS
% Data completeness (in resolution range)	83.4 (10.00-2.40) 85.4 (10.00-2.43)	Depositor EDS
R_{merge}	(Not available)	Depositor
R_{sym}	(Not available)	Depositor
$\langle I/\sigma(I) \rangle$ ¹	1.78 (at 2.42Å)	Xtrriage
Refinement program	X-PLOR	Depositor
R, R_{free}	0.179 , 0.236 0.175 , 0.222	Depositor DCC
R_{free} test set	2373 reflections (5.01%)	wwPDB-VP
Wilson B-factor (Å ²)	33.1	Xtrriage
Anisotropy	0.129	Xtrriage
Bulk solvent k_{sol} (e/Å ³), B_{sol} (Å ²)	0.32 , 80.9	EDS
L-test for twinning ²	$\langle L \rangle = 0.48$, $\langle L^2 \rangle = 0.31$	Xtrriage
Estimated twinning fraction	0.040 for -h,-k,l	Xtrriage
F_o, F_c correlation	0.96	EDS
Total number of atoms	6167	wwPDB-VP
Average B, all atoms (Å ²)	30.0	wwPDB-VP

Xtrriage's analysis on translational NCS is as follows: *The largest off-origin peak in the Patterson function is 3.75% of the height of the origin peak. No significant pseudotranslation is detected.*

¹Intensities estimated from amplitudes.

²Theoretical values of $\langle |L| \rangle$, $\langle L^2 \rangle$ for acentric reflections are 0.5, 0.333 respectively for untwinned datasets, and 0.375, 0.2 for perfectly twinned datasets.

5 Model quality i

5.1 Standard geometry i

Bond lengths and bond angles in the following residue types are not validated in this section: BGC

The Z score for a bond length (or angle) is the number of standard deviations the observed value is removed from the expected value. A bond length (or angle) with $|Z| > 5$ is considered an outlier worth inspection. RMSZ is the root-mean-square of all Z scores of the bond lengths (or angles).

Mol	Chain	Bond lengths		Bond angles	
		RMSZ	# Z >5	RMSZ	# Z >5
1	A	0.60	0/2944	1.06	22/4033 (0.5%)
1	B	0.60	0/2944	1.03	20/4033 (0.5%)
All	All	0.60	0/5888	1.04	42/8066 (0.5%)

Chiral center outliers are detected by calculating the chiral volume of a chiral center and verifying if the center is modelled as a planar moiety or with the opposite hand. A planarity outlier is detected by checking planarity of atoms in a peptide group, atoms in a mainchain group or atoms of a sidechain that are expected to be planar.

Mol	Chain	#Chirality outliers	#Planarity outliers
1	A	0	1

There are no bond length outliers.

All (42) bond angle outliers are listed below:

Mol	Chain	Res	Type	Atoms	Z	Observed($^{\circ}$)	Ideal($^{\circ}$)
1	A	25	GLY	N-CA-C	7.75	121.97	111.20
1	A	35	ASN	N-CA-C	-7.02	104.87	113.50
1	A	321	TRP	N-CA-C	-6.86	103.26	111.69
1	B	62	ARG	N-CA-C	-6.64	98.40	108.96
1	A	71	LYS	CA-C-N	6.45	126.83	119.93
1	A	71	LYS	C-N-CA	6.45	126.83	119.93
1	B	225	VAL	N-CA-C	-6.43	99.32	108.58
1	A	225	VAL	N-CA-C	-6.40	100.45	108.89
1	B	193	ASN	CA-C-N	6.33	126.03	119.82
1	B	193	ASN	C-N-CA	6.33	126.03	119.82
1	B	153	THR	N-CA-C	-6.30	104.41	111.28
1	B	116	HIS	N-CA-C	6.16	119.27	111.69
1	A	248	THR	N-CA-C	6.12	118.92	111.82
1	A	62	ARG	N-CA-C	-6.11	99.25	108.96

Continued on next page...

Continued from previous page...

Mol	Chain	Res	Type	Atoms	Z	Observed(°)	Ideal(°)
1	B	350	ILE	N-CA-C	6.07	117.93	112.17
1	B	229	VAL	CA-C-N	6.02	125.98	119.78
1	B	229	VAL	C-N-CA	6.02	125.98	119.78
1	A	304	ARG	CA-C-N	5.96	125.90	119.76
1	A	304	ARG	C-N-CA	5.96	125.90	119.76
1	B	304	ARG	CA-C-N	5.96	125.90	119.76
1	B	304	ARG	C-N-CA	5.96	125.90	119.76
1	A	327	ASP	N-CA-C	5.87	120.85	111.81
1	B	159	LEU	N-CA-C	5.87	121.05	111.37
1	A	136	THR	N-CA-C	-5.69	104.99	111.14
1	B	122	GLY	N-CA-C	5.67	118.63	111.09
1	B	248	THR	N-CA-C	5.57	118.12	111.71
1	A	309	TYR	N-CA-C	5.50	120.15	113.38
1	A	322	ASN	N-CA-C	5.42	116.53	109.64
1	A	233	LEU	N-CA-C	5.41	118.75	110.20
1	B	233	LEU	N-CA-C	5.38	118.39	109.46
1	A	159	LEU	N-CA-C	5.34	120.19	111.37
1	A	281	GLY	N-CA-C	5.27	120.43	113.37
1	B	71	LYS	CA-C-N	5.26	126.41	119.84
1	B	71	LYS	C-N-CA	5.26	126.41	119.84
1	B	162	GLU	N-CA-C	5.21	123.70	112.23
1	A	158	ASP	N-CA-C	-5.12	98.23	107.75
1	A	252	ASP	CA-C-N	5.08	124.75	119.56
1	A	252	ASP	C-N-CA	5.08	124.75	119.56
1	B	74	THR	N-CA-C	-5.08	101.69	109.76
1	A	266	ASN	N-CA-C	5.07	117.70	111.82
1	B	326	GLY	N-CA-C	5.04	125.12	113.18
1	A	82	TYR	CB-CA-C	-5.01	102.55	110.81

There are no chirality outliers.

All (1) planarity outliers are listed below:

Mol	Chain	Res	Type	Group
1	A	82	TYR	Sidechain

5.2 Too-close contacts

In the following table, the Non-H and H(model) columns list the number of non-hydrogen atoms and hydrogen atoms in the chain respectively. The H(added) column lists the number of hydrogen atoms added and optimized by MolProbity. The Clashes column lists the number of clashes within the asymmetric unit, whereas Symm-Clashes lists symmetry-related clashes.

Mol	Chain	Non-H	H(model)	H(added)	Clashes	Symm-Clashes
1	A	2851	0	2681	28	0
1	B	2851	0	2681	25	0
2	C	45	0	39	0	0
2	D	45	0	39	0	0
3	A	187	0	0	1	0
3	B	188	0	0	0	0
All	All	6167	0	5440	52	0

The all-atom clashscore is defined as the number of clashes found per 1000 atoms (including hydrogen atoms). The all-atom clashscore for this structure is 5.

All (52) close contacts within the same asymmetric unit are listed below, sorted by their clash magnitude.

Atom-1	Atom-2	Interatomic distance (Å)	Clash overlap (Å)
1:A:255:PHE:HA	1:A:258:ASN:OD1	1.95	0.67
1:A:30:GLY:HA3	1:A:38:VAL:HA	1.84	0.59
1:A:304:ARG:HB3	1:A:309:TYR:CD2	2.39	0.58
1:B:258:ASN:H	1:B:258:ASN:HD22	1.51	0.58
1:B:258:ASN:HD22	1:B:258:ASN:N	2.04	0.56
1:B:165:ASP:H	1:B:204:GLN:HE21	1.53	0.55
1:A:26:ILE:HG12	1:A:321:TRP:HB2	1.90	0.54
1:A:287:LEU:HD22	1:A:293:GLN:HG2	1.90	0.53
1:B:164:HIS:HB2	1:B:204:GLN:NE2	2.24	0.52
1:B:241:ALA:HA	1:B:250:PHE:CZ	2.46	0.51
1:A:326:GLY:HA2	1:B:120:CYS:SG	2.51	0.51
1:A:23:ILE:HB	1:A:315:GLN:HB3	1.93	0.50
1:A:212:TRP:CH2	1:A:245:TYR:HB3	2.46	0.50
1:A:75:MET:HE2	1:A:92:THR:HG22	1.93	0.49
1:B:322:ASN:HB3	1:B:324:ASP:OD1	2.11	0.49
1:A:88:LEU:HA	1:A:91:LEU:HD12	1.94	0.48
1:B:80:ASN:OD1	1:B:82:TYR:HB3	2.14	0.48
1:B:91:LEU:HB3	1:B:95:GLN:HB2	1.95	0.48
1:B:27:ASN:OD1	1:B:62:ARG:HD3	2.13	0.48
1:B:164:HIS:HB2	1:B:204:GLN:HE21	1.77	0.48
1:A:240:TYR:OH	1:A:282:GLU:HB3	2.14	0.47
1:A:322:ASN:HB3	1:A:324:ASP:OD1	2.14	0.47
1:B:323:PRO:HD2	1:B:336:TRP:CZ2	2.50	0.46
1:A:202:GLY:O	1:A:214:GLY:HA2	2.15	0.46
1:B:82:TYR:O	1:B:83:GLN:HB2	2.15	0.45
1:B:172:GLY:O	1:B:174:PRO:HD3	2.16	0.45
1:A:32:GLU:HA	1:A:66:SER:HB3	2.00	0.44
1:A:37:VAL:HB	1:A:76:PRO:HB3	2.00	0.44

Continued on next page...

Continued from previous page...

Atom-1	Atom-2	Interatomic distance (Å)	Clash overlap (Å)
1:A:255:PHE:CD1	1:A:256:PRO:HA	2.53	0.44
1:B:245:TYR:HA	1:B:246:PRO:HD3	1.73	0.44
1:A:56:LEU:HD23	1:A:56:LEU:HA	1.79	0.44
1:B:75:MET:HG3	1:B:92:THR:HA	2.00	0.43
1:B:335:ASP:OD1	1:B:337:GLN:HB3	2.19	0.43
1:A:32:GLU:O	1:A:120:CYS:HA	2.19	0.43
1:B:331:ILE:HD13	1:B:331:ILE:HA	1.86	0.42
1:B:258:ASN:H	1:B:258:ASN:ND2	2.16	0.42
1:A:24:ALA:HB1	1:A:316:TRP:CZ2	2.54	0.42
1:B:229:VAL:HA	1:B:230:PRO:HD3	1.84	0.42
1:A:241:ALA:HB1	1:A:292:ASP:OD1	2.20	0.42
1:B:235:TYR:CD2	1:B:270:LEU:HD13	2.55	0.42
1:A:255:PHE:CE2	1:A:291:THR:HG23	2.55	0.41
1:B:319:TRP:HA	1:B:320:SER:HA	1.83	0.41
1:A:323:PRO:HD2	1:A:336:TRP:CH2	2.55	0.41
1:A:241:ALA:HA	1:A:250:PHE:CZ	2.56	0.41
1:A:331:ILE:HD13	1:A:331:ILE:HA	1.92	0.41
1:A:33:THR:C	1:A:120:CYS:HB2	2.46	0.41
1:B:30:GLY:HA3	1:B:38:VAL:HA	2.03	0.41
1:B:31:PHE:CE2	1:B:38:VAL:HG13	2.56	0.41
1:A:91:LEU:HB3	1:A:95:GLN:HB2	2.03	0.40
1:A:29:PHE:CE2	1:A:322:ASN:HB2	2.55	0.40
1:A:128:TYR:HA	3:A:555:HOH:O	2.20	0.40
1:B:243:SER:O	1:B:327:ASP:HB2	2.22	0.40

There are no symmetry-related clashes.

5.3 Torsion angles [\(i\)](#)

5.3.1 Protein backbone [\(i\)](#)

In the following table, the Percentiles column shows the percent Ramachandran outliers of the chain as a percentile score with respect to all X-ray entries followed by that with respect to entries of similar resolution.

The Analysed column shows the number of residues for which the backbone conformation was analysed, and the total number of residues.

Mol	Chain	Analysed	Favoured	Allowed	Outliers	Percentiles
1	A	356/358 (99%)	330 (93%)	23 (6%)	3 (1%)	16 25

Continued on next page...

Continued from previous page...

Mol	Chain	Analysed	Favoured	Allowed	Outliers	Percentiles	
1	B	356/358 (99%)	335 (94%)	19 (5%)	2 (1%)	21	32
All	All	712/716 (99%)	665 (93%)	42 (6%)	5 (1%)	18	28

All (5) Ramachandran outliers are listed below:

Mol	Chain	Res	Type
1	A	304	ARG
1	A	326	GLY
1	B	304	ARG
1	A	203	VAL
1	B	203	VAL

5.3.2 Protein sidechains [i](#)

In the following table, the Percentiles column shows the percent sidechain outliers of the chain as a percentile score with respect to all X-ray entries followed by that with respect to entries of similar resolution.

The Analysed column shows the number of residues for which the sidechain conformation was analysed, and the total number of residues.

Mol	Chain	Analysed	Rotameric	Outliers	Percentiles	
1	A	304/304 (100%)	293 (96%)	11 (4%)	31	52
1	B	304/304 (100%)	299 (98%)	5 (2%)	55	76
All	All	608/608 (100%)	592 (97%)	16 (3%)	40	63

All (16) residues with a non-rotameric sidechain are listed below:

Mol	Chain	Res	Type
1	A	26	ILE
1	A	38	VAL
1	A	49	MET
1	A	70	LEU
1	A	86	GLN
1	A	114	ASP
1	A	115	ARG
1	A	205	SER
1	A	256	PRO
1	A	274	ASN
1	A	327	ASP

Continued on next page...

Continued from previous page...

Mol	Chain	Res	Type
1	B	75	MET
1	B	114	ASP
1	B	115	ARG
1	B	258	ASN
1	B	308	GLN

Sometimes sidechains can be flipped to improve hydrogen bonding and reduce clashes. All (11) such sidechains are listed below:

Mol	Chain	Res	Type
1	A	17	ASN
1	A	228	ASN
1	A	273	GLN
1	A	293	GLN
1	B	18	ASN
1	B	204	GLN
1	B	228	ASN
1	B	238	HIS
1	B	258	ASN
1	B	273	GLN
1	B	293	GLN

5.3.3 RNA [i](#)

There are no RNA molecules in this entry.

5.4 Non-standard residues in protein, DNA, RNA chains [i](#)

There are no non-standard protein/DNA/RNA residues in this entry.

5.5 Carbohydrates [i](#)

8 monosaccharides are modelled in this entry.

In the following table, the Counts columns list the number of bonds (or angles) for which Mogul statistics could be retrieved, the number of bonds (or angles) that are observed in the model and the number of bonds (or angles) that are defined in the Chemical Component Dictionary. The Link column lists molecule types, if any, to which the group is linked. The Z score for a bond length (or angle) is the number of standard deviations the observed value is removed from the expected value. A bond length (or angle) with $|Z| > 2$ is considered an outlier worth inspection. RMSZ is the root-mean-square of all Z scores of the bond lengths (or angles).

Mol	Type	Chain	Res	Link	Bond lengths			Bond angles		
					Counts	RMSZ	# Z > 2	Counts	RMSZ	# Z > 2
2	BGC	C	1	2	12,12,12	0.31	0	17,17,17	0.62	0
2	BGC	C	2	2	11,11,12	0.77	0	15,15,17	0.74	0
2	BGC	C	3	2	11,11,12	1.23	1 (9%)	15,15,17	1.48	4 (26%)
2	BGC	C	4	2	11,11,12	0.62	0	15,15,17	0.73	0
2	BGC	D	1	2	12,12,12	0.36	0	17,17,17	0.62	0
2	BGC	D	2	2	11,11,12	0.75	0	15,15,17	0.76	0
2	BGC	D	3	2	11,11,12	1.14	1 (9%)	15,15,17	1.62	4 (26%)
2	BGC	D	4	2	11,11,12	0.65	0	15,15,17	0.78	0

In the following table, the Chirals column lists the number of chiral outliers, the number of chiral centers analysed, the number of these observed in the model and the number defined in the Chemical Component Dictionary. Similar counts are reported in the Torsion and Rings columns. '-' means no outliers of that kind were identified.

Mol	Type	Chain	Res	Link	Chirals	Torsions	Rings
2	BGC	C	1	2	-	0/2/22/22	0/1/1/1
2	BGC	C	2	2	-	1/2/19/22	0/1/1/1
2	BGC	C	3	2	-	0/2/19/22	0/1/1/1
2	BGC	C	4	2	-	0/2/19/22	0/1/1/1
2	BGC	D	1	2	-	0/2/22/22	0/1/1/1
2	BGC	D	2	2	-	2/2/19/22	0/1/1/1
2	BGC	D	3	2	-	0/2/19/22	0/1/1/1
2	BGC	D	4	2	-	0/2/19/22	0/1/1/1

All (2) bond length outliers are listed below:

Mol	Chain	Res	Type	Atoms	Z	Observed(Å)	Ideal(Å)
2	C	3	BGC	C1-C2	2.75	1.58	1.52
2	D	3	BGC	C1-C2	2.44	1.58	1.52

All (8) bond angle outliers are listed below:

Mol	Chain	Res	Type	Atoms	Z	Observed(°)	Ideal(°)
2	D	3	BGC	C1-C2-C3	3.87	115.27	109.64
2	C	3	BGC	C1-C2-C3	3.34	114.50	109.64
2	D	3	BGC	C1-O5-C5	2.80	115.94	112.19
2	D	3	BGC	C3-C4-C5	-2.44	105.81	110.23
2	C	3	BGC	C3-C4-C5	-2.41	105.86	110.23
2	D	3	BGC	C2-C3-C4	-2.38	106.68	110.86
2	C	3	BGC	C1-O5-C5	2.31	115.28	112.19
2	C	3	BGC	C2-C3-C4	-2.23	106.94	110.86

There are no chirality outliers.

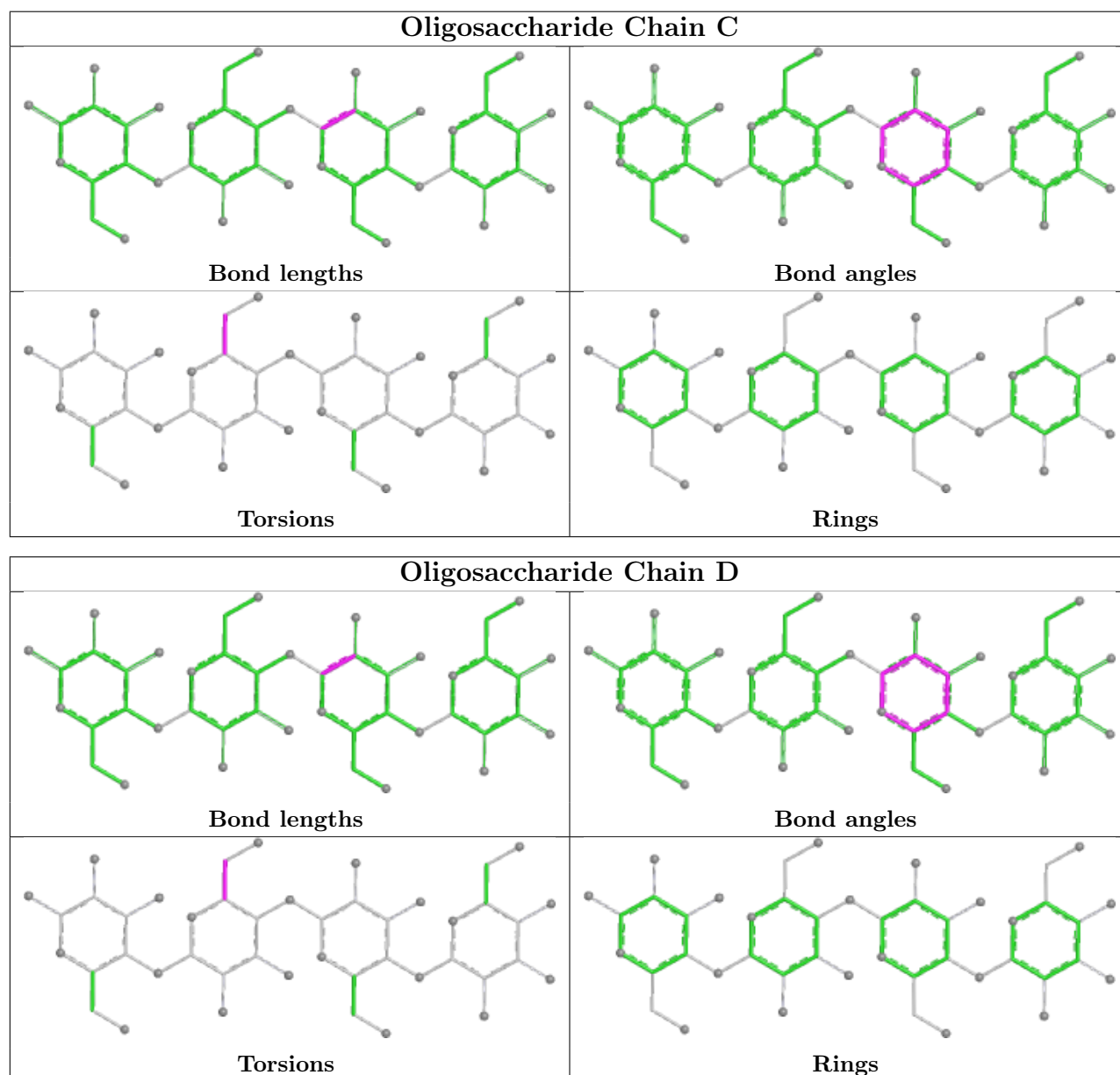
All (3) torsion outliers are listed below:

Mol	Chain	Res	Type	Atoms
2	D	2	BGC	C4-C5-C6-O6
2	D	2	BGC	O5-C5-C6-O6
2	C	2	BGC	C4-C5-C6-O6

There are no ring outliers.

No monomer is involved in short contacts.

The following is a two-dimensional graphical depiction of Mogul quality analysis of bond lengths, bond angles, torsion angles, and ring geometry for oligosaccharide.



5.6 Ligand geometry [i](#)

There are no ligands in this entry.

5.7 Other polymers [i](#)

There are no such residues in this entry.

5.8 Polymer linkage issues [i](#)

There are no chain breaks in this entry.

6 Fit of model and data [i](#)

6.1 Protein, DNA and RNA chains [i](#)

In the following table, the column labelled ‘#RSRZ > 2’ contains the number (and percentage) of RSRZ outliers, followed by percent RSRZ outliers for the chain as percentile scores relative to all X-ray entries and entries of similar resolution. The OWAB column contains the minimum, median, 95th percentile and maximum values of the occupancy-weighted average B-factor per residue. The column labelled ‘Q < 0.9’ lists the number of (and percentage) of residues with an average occupancy less than 0.9.

Mol	Chain	Analysed	<RSRZ>	#RSRZ>2	OWAB(Å ²)	Q<0.9
1	A	358/358 (100%)	-0.85	0 100 100	15, 28, 50, 68	0
1	B	358/358 (100%)	-0.90	0 100 100	14, 27, 48, 61	0
All	All	716/716 (100%)	-0.88	0 100 100	14, 27, 48, 68	0

There are no RSRZ outliers to report.

6.2 Non-standard residues in protein, DNA, RNA chains [i](#)

There are no non-standard protein/DNA/RNA residues in this entry.

6.3 Carbohydrates [i](#)

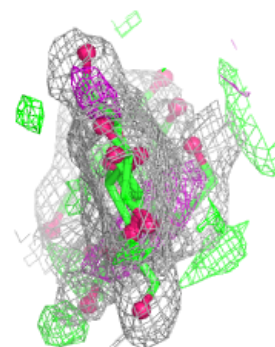
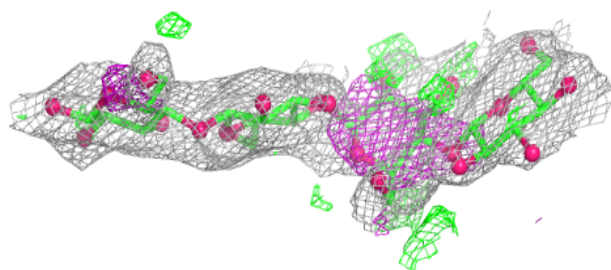
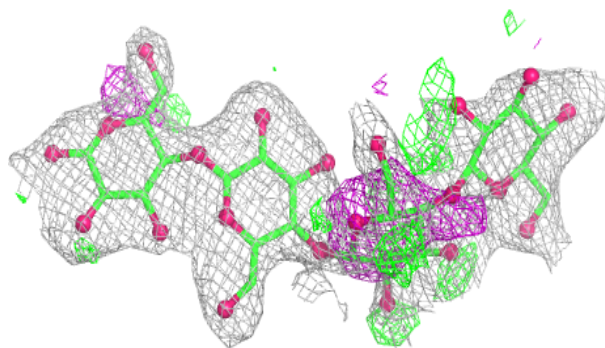
In the following table, the Atoms column lists the number of modelled atoms in the group and the number defined in the chemical component dictionary. The B-factors column lists the minimum, median, 95th percentile and maximum values of B factors of atoms in the group. The column labelled ‘Q < 0.9’ lists the number of atoms with occupancy less than 0.9.

Mol	Type	Chain	Res	Atoms	RSCC	RSR	B-factors(Å ²)	Q<0.9
2	BGC	D	3	11/12	0.41	0.22	59,63,64,64	0
2	BGC	C	3	11/12	0.55	0.19	59,63,64,64	0
2	BGC	C	1	12/12	0.85	0.09	50,51,53,54	0
2	BGC	D	4	11/12	0.87	0.11	57,61,64,65	0
2	BGC	D	1	12/12	0.90	0.10	50,51,53,54	0
2	BGC	D	2	11/12	0.90	0.08	50,53,56,59	0
2	BGC	C	4	11/12	0.91	0.09	57,61,64,65	0
2	BGC	C	2	11/12	0.92	0.07	50,53,56,59	0

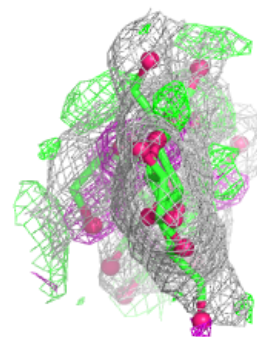
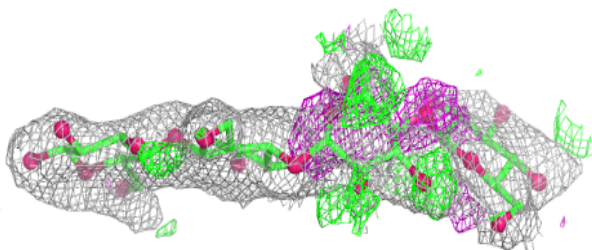
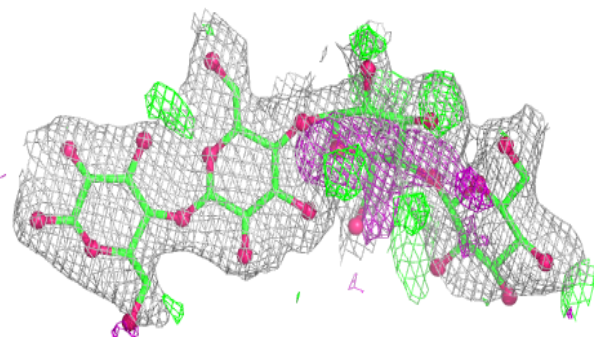
The following is a graphical depiction of the model fit to experimental electron density for oligosaccharide. Each fit is shown from different orientation to approximate a three-dimensional view.

Electron density around Chain C:

$2mF_o-DF_c$ (at 0.7 rmsd) in gray
 mF_o-DF_c (at 3 rmsd) in purple (negative)
and green (positive)

**Electron density around Chain D:**

$2mF_o-DF_c$ (at 0.7 rmsd) in gray
 mF_o-DF_c (at 3 rmsd) in purple (negative)
and green (positive)



6.4 Ligands

There are no ligands in this entry.

6.5 Other polymers

There are no such residues in this entry.