



Full wwPDB X-ray Structure Validation Report ⓘ

Mar 8, 2026 – 03:18 PM UTC

PDB ID : 2EC8 / pdb_00002ec8
Title : Crystal structure of the extracellular domain of the receptor tyrosine kinase, Kit
Authors : Yuzawa, S.; Opatowsky, Y.; Zhang, Z.; Mandiyan, V.; Lax, I.; Schlessinger, J.
Deposited on : 2007-02-11
Resolution : 3.00 Å (reported)

This is a Full wwPDB X-ray Structure Validation Report for a publicly released PDB entry.

We welcome your comments at validation@mail.wwpdb.org

A user guide is available at

<https://www.wwpdb.org/validation/2017/XrayValidationReportHelp>

with specific help available everywhere you see the ⓘ symbol.

The types of validation reports are described at

<http://www.wwpdb.org/validation/2017/FAQs#types>.

The following versions of software and data (see [references ⓘ](#)) were used in the production of this report:

MolProbity : 4-5-2 with Phenix2.0
Mogul : 2022.3.0, CSD as543be (2022)
Xtriage (Phenix) : 2.0
EDS : 3.0
Percentile statistics : 20250101.v01 (using entries in the PDB archive January 1st 2025)
CCP4 : 9.0.010 (Gargrove)
Density-Fitness : 1.0.12
Ideal geometry (proteins) : Engh & Huber (2001)
Ideal geometry (DNA, RNA) : Parkinson et al. (1996)
Validation Pipeline (wwPDB-VP) : 2.49

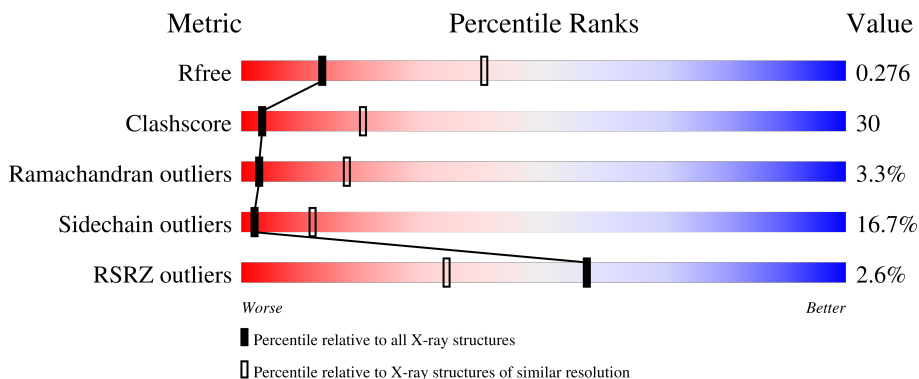
1 Overall quality at a glance i

The following experimental techniques were used to determine the structure:

X-RAY DIFFRACTION

The reported resolution of this entry is 3.00 Å.

Percentile scores (ranging between 0-100) for global validation metrics of the entry are shown in the following graphic. The table shows the number of entries on which the scores are based.



Metric	Whole archive (#Entries)	Similar resolution (#Entries, resolution range(Å))
R_{free}	180053	2672 (3.00-3.00)
Clashscore	190562	2977 (3.00-3.00)
Ramachandran outliers	187476	2877 (3.00-3.00)
Sidechain outliers	187428	2880 (3.00-3.00)
RSRZ outliers	180081	2671 (3.00-3.00)

The table below summarises the geometric issues observed across the polymeric chains and their fit to the electron density. The red, orange, yellow and green segments of the lower bar indicate the fraction of residues that contain outliers for ≥ 3 , 2, 1 and 0 types of geometric quality criteria respectively. A grey segment represents the fraction of residues that are not modelled. The numeric value for each fraction is indicated below the corresponding segment, with a dot representing fractions $\leq 5\%$. The upper red bar (where present) indicates the fraction of residues that have poor fit to the electron density. The numeric value is given above the bar.

Mol	Chain	Length	Quality of chain
1	A	524	<div style="display: flex; align-items: center;"> <div style="width: 2%; height: 10px; background-color: red; margin-right: 5px;"></div> <div style="width: 42%; height: 10px; background-color: green; margin-right: 5px;"></div> <div style="width: 36%; height: 10px; background-color: yellow; margin-right: 5px;"></div> <div style="width: 9%; height: 10px; background-color: orange; margin-right: 5px;"></div> <div style="width: 11%; height: 10px; background-color: grey;"></div> </div> <p style="font-size: small; margin-top: 5px;">2% 42% 36% 9% 11%</p>

2 Entry composition [i](#)

There are 2 unique types of molecules in this entry. The entry contains 3568 atoms, of which 0 are hydrogens and 0 are deuteriums.

In the tables below, the ZeroOcc column contains the number of atoms modelled with zero occupancy, the AltConf column contains the number of residues with at least one atom in alternate conformation and the Trace column contains the number of residues modelled with at most 2 atoms.

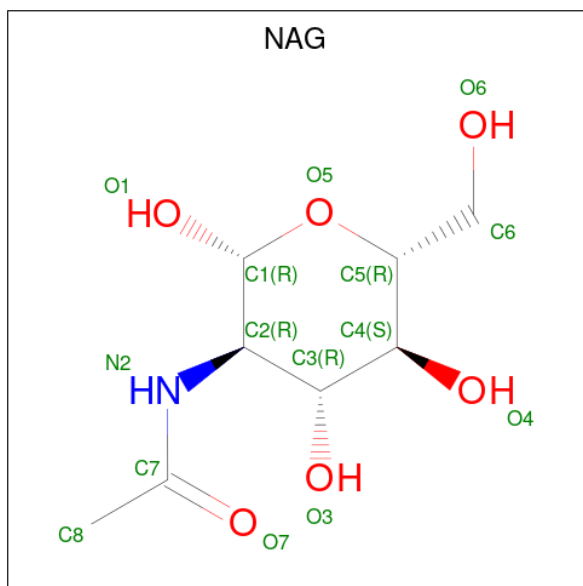
- Molecule 1 is a protein called Mast/stem cell growth factor receptor.

Mol	Chain	Residues	Atoms					ZeroOcc	AltConf	Trace
			Total	C	N	O	S			
1	A	464	3498	2225	578	680	15	0	0	0

There are 5 discrepancies between the modelled and reference sequences:

Chain	Residue	Modelled	Actual	Comment	Reference
A	520	HIS	-	expression tag	UNP P10721
A	521	HIS	-	expression tag	UNP P10721
A	522	HIS	-	expression tag	UNP P10721
A	523	HIS	-	expression tag	UNP P10721
A	524	HIS	-	expression tag	UNP P10721

- Molecule 2 is 2-acetamido-2-deoxy-beta-D-glucopyranose (CCD ID: NAG) (formula: $C_8H_{15}NO_6$).



Mol	Chain	Residues	Atoms				ZeroOcc	AltConf
2	A	1	Total 14	C 8	N 1	O 5	0	0
2	A	1	Total 14	C 8	N 1	O 5	0	0
2	A	1	Total 14	C 8	N 1	O 5	0	0
2	A	1	Total 14	C 8	N 1	O 5	0	0
2	A	1	Total 14	C 8	N 1	O 5	0	0

4 Data and refinement statistics

Property	Value	Source
Space group	H 3	Depositor
Cell constants a, b, c, α , β , γ	162.25Å 162.25Å 67.59Å 90.00° 90.00° 120.00°	Depositor
Resolution (Å)	27.07 – 3.00 27.07 – 3.00	Depositor EDS
% Data completeness (in resolution range)	99.9 (27.07-3.00) 99.2 (27.07-3.00)	Depositor EDS
R_{merge}	0.08	Depositor
R_{sym}	(Not available)	Depositor
$\langle I/\sigma(I) \rangle$ ¹	5.25 (at 3.00Å)	Xtrriage
Refinement program	CNS 1.1, REFMAC 5.3.0037	Depositor
R, R_{free}	0.254 , 0.295 0.273 , 0.276	Depositor DCC
R_{free} test set	666 reflections (5.05%)	wwPDB-VP
Wilson B-factor (Å ²)	66.5	Xtrriage
Anisotropy	0.040	Xtrriage
Bulk solvent k_{sol} (e/Å ³), B_{sol} (Å ²)	0.31 , 64.6	EDS
L-test for twinning ²	$\langle L \rangle = 0.50$, $\langle L^2 \rangle = 0.34$	Xtrriage
Estimated twinning fraction	0.016 for h,-h-k,-l	Xtrriage
F_o, F_c correlation	0.89	EDS
Total number of atoms	3568	wwPDB-VP
Average B, all atoms (Å ²)	33.0	wwPDB-VP

Xtrriage's analysis on translational NCS is as follows: *The largest off-origin peak in the Patterson function is 4.47% of the height of the origin peak. No significant pseudotranslation is detected.*

¹Intensities estimated from amplitudes.

²Theoretical values of $\langle |L| \rangle$, $\langle L^2 \rangle$ for acentric reflections are 0.5, 0.333 respectively for untwinned datasets, and 0.375, 0.2 for perfectly twinned datasets.

5 Model quality i

5.1 Standard geometry i

Bond lengths and bond angles in the following residue types are not validated in this section: NAG

The Z score for a bond length (or angle) is the number of standard deviations the observed value is removed from the expected value. A bond length (or angle) with $|Z| > 5$ is considered an outlier worth inspection. RMSZ is the root-mean-square of all Z scores of the bond lengths (or angles).

Mol	Chain	Bond lengths		Bond angles	
		RMSZ	# Z >5	RMSZ	# Z >5
1	A	0.87	4/3578 (0.1%)	1.27	30/4886 (0.6%)

Chiral center outliers are detected by calculating the chiral volume of a chiral center and verifying if the center is modelled as a planar moiety or with the opposite hand. A planarity outlier is detected by checking planarity of atoms in a peptide group, atoms in a mainchain group or atoms of a sidechain that are expected to be planar.

Mol	Chain	#Chirality outliers	#Planarity outliers
1	A	0	4

All (4) bond length outliers are listed below:

Mol	Chain	Res	Type	Atoms	Z	Observed(Å)	Ideal(Å)
1	A	464	SER	C-O	8.74	1.41	1.23
1	A	155	PRO	C-O	7.07	1.33	1.24
1	A	466	GLY	N-CA	6.54	1.56	1.45
1	A	242	VAL	CA-CB	-5.02	1.49	1.54

All (30) bond angle outliers are listed below:

Mol	Chain	Res	Type	Atoms	Z	Observed(°)	Ideal(°)
1	A	423	ASN	N-CA-C	-16.31	92.69	112.59
1	A	371	ILE	N-CA-C	-10.53	103.09	113.20
1	A	254	LYS	N-CA-C	-9.93	99.76	113.56
1	A	422	VAL	N-CA-C	9.80	121.87	107.37
1	A	195	VAL	N-CA-C	9.58	122.31	109.37
1	A	248	ARG	N-CA-C	-8.75	97.17	110.30
1	A	357	ASP	N-CA-C	8.61	125.42	114.31
1	A	149	LYS	N-CA-C	8.59	119.59	108.34
1	A	249	GLU	N-CA-C	8.06	120.15	111.36

Continued on next page...

Continued from previous page...

Mol	Chain	Res	Type	Atoms	Z	Observed(°)	Ideal(°)
1	A	66	TRP	N-CA-C	-7.77	97.07	109.59
1	A	17	LEU	N-CA-C	7.39	119.85	110.24
1	A	104	SER	N-CA-C	7.34	117.96	108.34
1	A	387	GLY	N-CA-C	-6.67	105.00	112.33
1	A	93	GLY	N-CA-C	6.61	119.50	110.58
1	A	356	THR	N-CA-C	-6.54	104.48	114.16
1	A	483	PHE	N-CA-C	6.49	124.62	110.80
1	A	205	ARG	N-CA-C	-6.14	102.34	110.07
1	A	464	SER	CA-C-O	-6.00	110.60	120.80
1	A	144	THR	N-CA-C	5.96	120.73	112.45
1	A	438	ILE	N-CA-C	5.86	116.04	107.37
1	A	251	SER	N-CA-C	5.84	123.24	110.80
1	A	242	VAL	CB-CA-C	-5.63	102.14	111.32
1	A	223	LEU	N-CA-C	5.51	118.24	109.81
1	A	220	SER	N-CA-C	5.45	117.37	108.55
1	A	35	SER	N-CA-C	5.19	118.39	110.50
1	A	421	LEU	N-CA-C	-5.18	102.19	109.96
1	A	120	VAL	N-CA-C	5.18	117.50	108.90
1	A	424	GLY	N-CA-C	-5.14	108.18	115.43
1	A	357	ASP	N-CA-CB	-5.11	104.10	110.90
1	A	187	SER	N-CA-C	5.03	117.69	109.59

There are no chirality outliers.

All (4) planarity outliers are listed below:

Mol	Chain	Res	Type	Group
1	A	250	ASN	Peptide
1	A	460	GLN	Peptide
1	A	69	GLU	Peptide
1	A	70	ILE	Peptide

5.2 Too-close contacts

In the following table, the Non-H and H(model) columns list the number of non-hydrogen atoms and hydrogen atoms in the chain respectively. The H(added) column lists the number of hydrogen atoms added and optimized by MolProbity. The Clashes column lists the number of clashes within the asymmetric unit, whereas Symm-Clashes lists symmetry-related clashes.

Mol	Chain	Non-H	H(model)	H(added)	Clashes	Symm-Clashes
1	A	3498	0	3206	206	0
2	A	70	0	65	8	0

Continued on next page...

Continued from previous page...

Mol	Chain	Non-H	H(model)	H(added)	Clashes	Symm-Clashes
All	All	3568	0	3271	206	0

The all-atom clashscore is defined as the number of clashes found per 1000 atoms (including hydrogen atoms). The all-atom clashscore for this structure is 30.

All (206) close contacts within the same asymmetric unit are listed below, sorted by their clash magnitude.

Atom-1	Atom-2	Interatomic distance (Å)	Clash overlap (Å)
1:A:144:THR:HG23	1:A:189:ASP:HB2	1.30	1.08
1:A:342:LYS:H	1:A:342:LYS:HD2	0.95	1.08
1:A:342:LYS:H	1:A:342:LYS:CD	1.74	1.00
1:A:254:LYS:O	1:A:254:LYS:HG3	1.65	0.96
1:A:342:LYS:HD2	1:A:342:LYS:N	1.81	0.95
1:A:330:ASN:ND2	1:A:381:ARG:H	1.64	0.95
1:A:138:LEU:HD11	1:A:166:PRO:HB3	1.49	0.93
1:A:70:ILE:HG13	1:A:71:LEU:H	1.35	0.91
1:A:252:GLN:HG3	1:A:253:THR:HG23	1.54	0.90
1:A:330:ASN:HD21	1:A:381:ARG:H	1.20	0.90
1:A:214:VAL:HG13	1:A:301:VAL:HG23	1.55	0.89
1:A:264:HIS:HB2	1:A:268:ASN:HD22	1.40	0.87
1:A:137:PRO:HG3	1:A:168:ALA:O	1.76	0.86
1:A:50:VAL:HG23	1:A:112:ARG:O	1.76	0.85
1:A:148:LEU:HG	1:A:170:ILE:HG21	1.58	0.83
1:A:145:ASN:O	1:A:188:VAL:HA	1.79	0.83
1:A:88:GLU:O	1:A:111:VAL:HG11	1.79	0.82
1:A:336:GLU:HG2	1:A:374:VAL:HB	1.63	0.81
1:A:330:ASN:HD22	1:A:380:THR:HA	1.45	0.80
1:A:400:ASN:C	1:A:400:ASN:HD22	1.92	0.78
1:A:92:THR:OG1	1:A:111:VAL:HG12	1.86	0.76
1:A:70:ILE:HG13	1:A:71:LEU:N	2.01	0.75
1:A:506:PHE:CD2	1:A:506:PHE:C	2.67	0.73
1:A:330:ASN:ND2	1:A:380:THR:HA	2.04	0.73
1:A:129:ASP:HB2	2:A:700:NAG:H82	1.71	0.72
1:A:122:ARG:HA	1:A:200:PHE:CE2	2.24	0.72
1:A:214:VAL:HG23	1:A:235:ILE:HG12	1.72	0.72
1:A:433:PHE:HA	1:A:434:PRO:C	2.16	0.71
1:A:160:LEU:HD11	1:A:172:ILE:HG23	1.73	0.70
1:A:315:ILE:HG22	1:A:316:PHE:N	2.05	0.70
1:A:415:ILE:HG23	1:A:415:ILE:O	1.90	0.70
1:A:98:THR:HG23	1:A:104:SER:HB3	1.73	0.70
1:A:291:TYR:CE2	2:A:750:NAG:H82	2.27	0.70

Continued on next page...

Continued from previous page...

Atom-1	Atom-2	Interatomic distance (Å)	Clash overlap (Å)
1:A:71:LEU:HD22	1:A:135:ARG:HG2	1.74	0.68
1:A:252:GLN:HG3	1:A:253:THR:N	2.10	0.67
1:A:214:VAL:HG13	1:A:301:VAL:CG2	2.25	0.67
1:A:180:HIS:CD2	1:A:181:ARG:HG3	2.31	0.66
1:A:144:THR:HG23	1:A:189:ASP:CB	2.18	0.66
1:A:170:ILE:HD13	1:A:186:CYS:SG	2.36	0.65
1:A:235:ILE:HD12	1:A:244:SER:CB	2.27	0.65
1:A:322:THR:HG23	1:A:408:TYR:HE2	1.60	0.65
1:A:201:ILE:H	1:A:201:ILE:HD13	1.62	0.64
1:A:235:ILE:HD12	1:A:244:SER:HB2	1.80	0.64
1:A:355:PHE:HD1	1:A:357:ASP:OD1	1.81	0.63
1:A:253:THR:CB	1:A:255:LEU:H	2.12	0.63
1:A:144:THR:CG2	1:A:189:ASP:HB2	2.20	0.62
1:A:111:VAL:O	1:A:111:VAL:HG13	2.00	0.61
1:A:35:SER:OG	1:A:36:PRO:HD2	2.00	0.61
1:A:138:LEU:CD1	1:A:166:PRO:HB3	2.25	0.60
1:A:383:LYS:O	1:A:385:THR:N	2.34	0.60
1:A:97:CYS:O	1:A:104:SER:HB2	2.03	0.59
1:A:170:ILE:HD12	1:A:170:ILE:N	2.17	0.59
1:A:158:LYS:C	1:A:160:LEU:H	2.12	0.58
1:A:170:ILE:CD1	1:A:186:CYS:SG	2.92	0.58
1:A:463:ASN:CB	1:A:473:VAL:HG23	2.33	0.58
1:A:264:HIS:HE2	1:A:270:GLU:HG2	1.68	0.58
1:A:71:LEU:CD2	1:A:135:ARG:HG2	2.34	0.58
1:A:379:LEU:HD21	1:A:390:TYR:CE2	2.39	0.58
1:A:214:VAL:CG1	1:A:301:VAL:HG23	2.33	0.57
1:A:287:VAL:HG13	1:A:304:THR:HG22	1.86	0.57
1:A:335:VAL:HG23	1:A:335:VAL:O	2.03	0.57
1:A:121:ASP:HB3	1:A:135:ARG:NH2	2.20	0.57
1:A:85:GLU:CB	1:A:86:LYS:HE3	2.34	0.57
1:A:338:GLU:HG2	1:A:371:ILE:HD12	1.87	0.57
1:A:252:GLN:CG	1:A:253:THR:HG23	2.30	0.57
1:A:47:ILE:N	1:A:47:ILE:HD12	2.19	0.57
1:A:169:GLY:C	1:A:170:ILE:HD12	2.30	0.57
1:A:138:LEU:HD11	1:A:166:PRO:CB	2.31	0.56
1:A:315:ILE:HG22	1:A:316:PHE:H	1.70	0.56
1:A:383:LYS:C	1:A:385:THR:H	2.14	0.56
1:A:110:PHE:CD2	1:A:141:PRO:HG3	2.41	0.56
1:A:201:ILE:HD13	1:A:201:ILE:N	2.21	0.56
1:A:338:GLU:HG3	1:A:371:ILE:HG23	1.87	0.55
1:A:329:GLU:CG	1:A:330:ASN:H	2.17	0.55

Continued on next page...

Continued from previous page...

Atom-1	Atom-2	Interatomic distance (Å)	Clash overlap (Å)
1:A:151:CYS:HB2	1:A:183:CYS:O	2.06	0.55
1:A:330:ASN:ND2	1:A:381:ARG:N	2.45	0.55
1:A:419:ASP:HB2	1:A:427:GLN:HB3	1.89	0.55
1:A:119:LEU:O	1:A:137:PRO:HD2	2.06	0.55
1:A:125:TYR:CD1	1:A:203:LYS:HB2	2.42	0.55
1:A:228:GLU:OE1	1:A:278:SER:HA	2.07	0.55
1:A:291:TYR:HE2	2:A:750:NAG:H82	1.71	0.54
1:A:325:VAL:HG11	1:A:382:LEU:HD21	1.90	0.54
1:A:367:ASN:ND2	2:A:850:NAG:O6	2.41	0.54
1:A:99:ASN:HD21	1:A:103:LEU:HB2	1.72	0.54
1:A:237:ASP:OD2	1:A:238:VAL:N	2.33	0.54
1:A:346:GLN:HB3	1:A:394:VAL:HG23	1.90	0.54
1:A:146:TYR:HE1	1:A:165:ASP:C	2.16	0.53
1:A:47:ILE:HD12	1:A:47:ILE:H	1.73	0.53
1:A:315:ILE:CG2	1:A:316:PHE:N	2.72	0.53
1:A:136:CYS:SG	1:A:170:ILE:HD13	2.49	0.53
1:A:208:PHE:HD2	1:A:295:THR:HG23	1.74	0.52
1:A:431:ALA:HB2	1:A:473:VAL:HG12	1.92	0.52
1:A:235:ILE:CD1	1:A:244:SER:HB2	2.39	0.52
1:A:400:ASN:C	1:A:400:ASN:ND2	2.64	0.52
1:A:133:LEU:HB2	1:A:171:MET:SD	2.50	0.52
1:A:130:ASN:OD1	2:A:700:NAG:N2	2.43	0.52
1:A:164:PRO:HB3	1:A:170:ILE:HG13	1.92	0.52
1:A:467:PRO:HA	1:A:468:PRO:C	2.34	0.51
1:A:422:VAL:C	1:A:424:GLY:H	2.15	0.51
1:A:151:CYS:HB2	1:A:183:CYS:C	2.36	0.51
1:A:85:GLU:HB2	1:A:86:LYS:HE3	1.92	0.51
1:A:184:LEU:N	1:A:184:LEU:CD2	2.74	0.51
1:A:110:PHE:CE2	1:A:141:PRO:HG3	2.47	0.50
1:A:202:LEU:HD23	1:A:203:LYS:H	1.76	0.50
1:A:336:GLU:O	1:A:337:TYR:HB3	2.11	0.50
1:A:252:GLN:HG3	1:A:253:THR:H	1.76	0.49
1:A:338:GLU:CG	1:A:371:ILE:HD12	2.41	0.49
1:A:82:TRP:C	1:A:82:TRP:CD1	2.90	0.49
1:A:146:TYR:O	1:A:164:PRO:HG3	2.12	0.49
1:A:254:LYS:O	1:A:255:LEU:C	2.56	0.49
1:A:238:VAL:HA	1:A:267:PHE:O	2.12	0.49
1:A:422:VAL:HG12	1:A:422:VAL:O	2.11	0.49
1:A:312:PHE:CE1	1:A:340:PHE:HB3	2.48	0.49
1:A:317:PRO:HA	1:A:335:VAL:HG12	1.94	0.49
1:A:383:LYS:C	1:A:385:THR:N	2.68	0.49

Continued on next page...

Continued from previous page...

Atom-1	Atom-2	Interatomic distance (Å)	Clash overlap (Å)
1:A:184:LEU:N	1:A:184:LEU:HD23	2.29	0.48
1:A:422:VAL:HG13	1:A:424:GLY:N	2.28	0.48
1:A:202:LEU:HD23	1:A:203:LYS:N	2.28	0.48
1:A:143:VAL:HG13	1:A:189:ASP:O	2.13	0.47
1:A:253:THR:O	1:A:254:LYS:HB3	2.14	0.47
1:A:326:ASN:O	1:A:327:ASP:C	2.57	0.47
1:A:339:ALA:N	1:A:371:ILE:HD13	2.28	0.47
1:A:264:HIS:NE2	1:A:270:GLU:HG2	2.29	0.47
1:A:408:TYR:CD1	1:A:470:GLY:HA2	2.49	0.47
1:A:235:ILE:HD12	1:A:244:SER:HB3	1.94	0.47
1:A:235:ILE:O	1:A:270:GLU:HA	2.14	0.47
1:A:322:THR:CG2	1:A:408:TYR:HE2	2.27	0.47
1:A:422:VAL:HG13	1:A:424:GLY:H	1.80	0.47
1:A:330:ASN:HD21	1:A:381:ARG:N	2.02	0.47
1:A:182:LEU:HD12	1:A:183:CYS:H	1.79	0.47
1:A:291:TYR:CE2	2:A:750:NAG:C8	2.98	0.47
1:A:311:GLY:HA3	1:A:398:ASP:HB2	1.97	0.47
1:A:199:LYS:HB2	1:A:199:LYS:HE3	1.75	0.46
1:A:160:LEU:HD11	1:A:172:ILE:CG2	2.41	0.46
1:A:254:LYS:O	1:A:254:LYS:CG	2.51	0.46
1:A:369:SER:OG	2:A:850:NAG:H62	2.15	0.46
1:A:229:PHE:HB3	1:A:277:ILE:HB	1.96	0.46
1:A:89:ALA:HA	1:A:111:VAL:HG13	1.98	0.45
1:A:232:THR:HG23	1:A:274:THR:HG22	1.98	0.45
1:A:315:ILE:CG2	1:A:316:PHE:H	2.29	0.45
1:A:212:PRO:HG3	1:A:294:ASN:ND2	2.31	0.45
1:A:348:TRP:CE2	1:A:377:LEU:HB2	2.51	0.45
1:A:202:LEU:CD2	1:A:203:LYS:N	2.79	0.45
1:A:235:ILE:HD13	1:A:292:ALA:HB2	1.99	0.45
1:A:275:LEU:HD13	1:A:276:THR:N	2.32	0.45
1:A:330:ASN:ND2	1:A:380:THR:CA	2.78	0.45
1:A:128:GLU:HA	1:A:175:VAL:HG13	1.99	0.44
1:A:399:VAL:HG12	1:A:400:ASN:N	2.32	0.44
1:A:433:PHE:HA	1:A:434:PRO:O	2.16	0.44
1:A:441:TYR:HE2	1:A:492:LYS:HE2	1.82	0.44
1:A:63:PHE:CE1	1:A:97:CYS:SG	3.10	0.44
1:A:361:ASP:C	1:A:361:ASP:OD2	2.60	0.44
1:A:433:PHE:CG	1:A:434:PRO:HA	2.53	0.44
1:A:253:THR:C	1:A:255:LEU:N	2.75	0.44
1:A:340:PHE:CD1	1:A:341:PRO:HA	2.53	0.44
1:A:264:HIS:HB2	1:A:268:ASN:ND2	2.20	0.44

Continued on next page...

Continued from previous page...

Atom-1	Atom-2	Interatomic distance (Å)	Clash overlap (Å)
1:A:122:ARG:HA	1:A:200:PHE:HE2	1.79	0.44
1:A:287:VAL:CG1	1:A:302:THR:OG1	2.65	0.44
1:A:506:PHE:O	1:A:506:PHE:HD2	2.00	0.44
1:A:148:LEU:HD12	1:A:162:PHE:HB3	2.00	0.43
1:A:425:MET:SD	1:A:479:ASP:HA	2.58	0.43
1:A:233:CYS:HB2	1:A:246:TRP:CZ2	2.54	0.43
1:A:247:LYS:O	1:A:248:ARG:C	2.61	0.43
1:A:329:GLU:HG2	1:A:330:ASN:H	1.83	0.43
1:A:264:HIS:HE2	1:A:270:GLU:CG	2.32	0.43
1:A:130:ASN:O	1:A:175:VAL:HG12	2.19	0.43
1:A:127:LYS:O	1:A:128:GLU:C	2.62	0.43
1:A:312:PHE:C	1:A:313:ILE:HG13	2.43	0.42
1:A:254:LYS:HE3	1:A:254:LYS:HB2	1.64	0.42
1:A:291:TYR:HE2	2:A:750:NAG:C8	2.31	0.42
1:A:99:ASN:OD1	1:A:99:ASN:C	2.62	0.42
1:A:308:VAL:HG12	1:A:310:LYS:H	1.84	0.42
1:A:334:ILE:O	1:A:335:VAL:HG13	2.20	0.42
1:A:377:LEU:HD22	1:A:379:LEU:HD13	2.01	0.42
1:A:49:ARG:O	1:A:52:ASP:HB2	2.19	0.42
1:A:56:LEU:HB2	1:A:82:TRP:HB3	2.02	0.42
1:A:250:ASN:C	1:A:251:SER:OG	2.63	0.42
1:A:253:THR:HB	1:A:255:LEU:H	1.83	0.42
1:A:319:ILE:O	1:A:320:ASN:C	2.61	0.42
1:A:371:ILE:HD13	1:A:371:ILE:O	2.19	0.42
1:A:50:VAL:HG21	1:A:113:ASP:HA	2.01	0.42
1:A:75:ASN:HD22	1:A:75:ASN:HA	1.72	0.42
1:A:148:LEU:HD12	1:A:162:PHE:CB	2.49	0.42
1:A:63:PHE:HE1	1:A:97:CYS:SG	2.42	0.42
1:A:70:ILE:CG1	1:A:71:LEU:N	2.72	0.42
1:A:13:VAL:O	1:A:15:LEU:HD12	2.20	0.41
1:A:224:ARG:O	1:A:225:GLU:C	2.62	0.41
1:A:121:ASP:CG	1:A:135:ARG:NH2	2.78	0.41
1:A:349:ILE:HG22	1:A:354:THR:HB	2.01	0.41
1:A:415:ILE:O	1:A:415:ILE:CG2	2.62	0.41
1:A:50:VAL:CG2	1:A:112:ARG:O	2.58	0.41
1:A:351:MET:C	1:A:353:ARG:N	2.77	0.41
1:A:334:ILE:O	1:A:335:VAL:CG1	2.69	0.41
1:A:351:MET:C	1:A:353:ARG:H	2.28	0.41
1:A:49:ARG:HB2	1:A:52:ASP:OD1	2.21	0.41
1:A:92:THR:HA	1:A:109:VAL:O	2.21	0.41
1:A:434:PRO:O	1:A:435:GLU:C	2.64	0.41

Continued on next page...

Continued from previous page...

Atom-1	Atom-2	Interatomic distance (Å)	Clash overlap (Å)
1:A:434:PRO:HD2	1:A:497:VAL:HG23	2.02	0.41
1:A:316:PHE:HA	1:A:317:PRO:HD2	1.93	0.41
1:A:493:ALA:HB3	1:A:500:THR:HG22	2.02	0.40
1:A:290:CYS:O	1:A:300:ASN:HA	2.21	0.40
1:A:110:PHE:CG	1:A:141:PRO:HD3	2.57	0.40
1:A:158:LYS:O	1:A:160:LEU:N	2.53	0.40
1:A:422:VAL:CA	1:A:424:GLY:H	2.34	0.40
1:A:211:VAL:HG21	1:A:298:SER:O	2.21	0.40
1:A:329:GLU:O	1:A:382:LEU:HD23	2.22	0.40

There are no symmetry-related clashes.

5.3 Torsion angles [i](#)

5.3.1 Protein backbone [i](#)

In the following table, the Percentiles column shows the percent Ramachandran outliers of the chain as a percentile score with respect to all X-ray entries followed by that with respect to entries of similar resolution.

The Analysed column shows the number of residues for which the backbone conformation was analysed, and the total number of residues.

Mol	Chain	Analysed	Favoured	Allowed	Outliers	Percentiles
1	A	452/524 (86%)	374 (83%)	63 (14%)	15 (3%)	3 17

All (15) Ramachandran outliers are listed below:

Mol	Chain	Res	Type
1	A	285	SER
1	A	71	LEU
1	A	384	GLY
1	A	484	LYS
1	A	150	GLY
1	A	159	ASP
1	A	256	GLN
1	A	386	GLU
1	A	461	THR
1	A	155	PRO
1	A	327	ASP
1	A	482	ALA

Continued on next page...

Continued from previous page...

Mol	Chain	Res	Type
1	A	70	ILE
1	A	457	VAL
1	A	459	VAL

5.3.2 Protein sidechains [i](#)

In the following table, the Percentiles column shows the percent sidechain outliers of the chain as a percentile score with respect to all X-ray entries followed by that with respect to entries of similar resolution.

The Analysed column shows the number of residues for which the sidechain conformation was analysed, and the total number of residues.

Mol	Chain	Analysed	Rotameric	Outliers	Percentiles
1	A	365/468 (78%)	304 (83%)	61 (17%)	2 12

All (61) residues with a non-rotameric sidechain are listed below:

Mol	Chain	Res	Type
1	A	13	VAL
1	A	15	LEU
1	A	47	ILE
1	A	49	ARG
1	A	75	ASN
1	A	79	GLN
1	A	86	LYS
1	A	101	HIS
1	A	119	LEU
1	A	124	LEU
1	A	135	ARG
1	A	138	LEU
1	A	144	THR
1	A	145	ASN
1	A	151	CYS
1	A	170	ILE
1	A	176	LYS
1	A	183	CYS
1	A	184	LEU
1	A	196	LEU
1	A	198	GLU
1	A	201	ILE
1	A	202	LEU

Continued on next page...

Continued from previous page...

Mol	Chain	Res	Type
1	A	205	ARG
1	A	216	VAL
1	A	223	LEU
1	A	228	GLU
1	A	235	ILE
1	A	242	VAL
1	A	254	LYS
1	A	257	GLU
1	A	258	LYS
1	A	259	TYR
1	A	263	HIS
1	A	274	THR
1	A	276	THR
1	A	287	VAL
1	A	295	THR
1	A	305	LEU
1	A	310	LYS
1	A	314	ASN
1	A	318	MET
1	A	329	GLU
1	A	331	VAL
1	A	332	ASP
1	A	342	LYS
1	A	347	GLN
1	A	356	THR
1	A	361	ASP
1	A	369	SER
1	A	371	ILE
1	A	374	VAL
1	A	377	LEU
1	A	379	LEU
1	A	386	GLU
1	A	393	LEU
1	A	397	SER
1	A	400	ASN
1	A	425	MET
1	A	428	CYS
1	A	506	PHE

Sometimes sidechains can be flipped to improve hydrogen bonding and reduce clashes. All (10) such sidechains are listed below:

Mol	Chain	Res	Type
1	A	75	ASN
1	A	145	ASN
1	A	263	HIS
1	A	268	ASN
1	A	330	ASN
1	A	345	HIS
1	A	346	GLN
1	A	347	GLN
1	A	370	ASN
1	A	427	GLN

5.3.3 RNA [i](#)

There are no RNA molecules in this entry.

5.4 Non-standard residues in protein, DNA, RNA chains [i](#)

There are no non-standard protein/DNA/RNA residues in this entry.

5.5 Carbohydrates [i](#)

There are no oligosaccharides in this entry.

5.6 Ligand geometry [i](#)

5 ligands are modelled in this entry.

In the following table, the Counts columns list the number of bonds (or angles) for which Mogul statistics could be retrieved, the number of bonds (or angles) that are observed in the model and the number of bonds (or angles) that are defined in the Chemical Component Dictionary. The Link column lists molecule types, if any, to which the group is linked. The Z score for a bond length (or angle) is the number of standard deviations the observed value is removed from the expected value. A bond length (or angle) with $|Z| > 2$ is considered an outlier worth inspection. RMSZ is the root-mean-square of all Z scores of the bond lengths (or angles).

Mol	Type	Chain	Res	Link	Bond lengths			Bond angles		
					Counts	RMSZ	$\# Z > 2$	Counts	RMSZ	$\# Z > 2$
2	NAG	A	700	1	14,14,15	0.87	1 (7%)	17,19,21	1.34	3 (17%)
2	NAG	A	900	1	14,14,15	0.61	0	17,19,21	0.94	1 (5%)
2	NAG	A	800	1	14,14,15	0.70	0	17,19,21	0.96	1 (5%)
2	NAG	A	750	1	14,14,15	0.60	0	17,19,21	1.07	2 (11%)

Mol	Type	Chain	Res	Link	Bond lengths			Bond angles		
					Counts	RMSZ	# Z > 2	Counts	RMSZ	# Z > 2
2	NAG	A	850	1	14,14,15	0.64	0	17,19,21	0.76	1 (5%)

In the following table, the Chirals column lists the number of chiral outliers, the number of chiral centers analysed, the number of these observed in the model and the number defined in the Chemical Component Dictionary. Similar counts are reported in the Torsion and Rings columns. '-' means no outliers of that kind were identified.

Mol	Type	Chain	Res	Link	Chirals	Torsions	Rings
2	NAG	A	700	1	-	2/6/23/26	0/1/1/1
2	NAG	A	900	1	-	4/6/23/26	0/1/1/1
2	NAG	A	800	1	-	0/6/23/26	0/1/1/1
2	NAG	A	750	1	-	0/6/23/26	0/1/1/1
2	NAG	A	850	1	-	2/6/23/26	0/1/1/1

All (1) bond length outliers are listed below:

Mol	Chain	Res	Type	Atoms	Z	Observed(Å)	Ideal(Å)
2	A	700	NAG	C1-C2	2.63	1.55	1.52

All (8) bond angle outliers are listed below:

Mol	Chain	Res	Type	Atoms	Z	Observed(°)	Ideal(°)
2	A	800	NAG	O5-C1-C2	-2.68	107.14	111.29
2	A	750	NAG	O5-C1-C2	-2.36	107.63	111.29
2	A	700	NAG	C4-C3-C2	-2.34	107.59	111.02
2	A	700	NAG	C1-O5-C5	2.32	115.30	112.19
2	A	700	NAG	C3-C4-C5	-2.19	106.27	110.23
2	A	900	NAG	C4-C3-C2	2.17	114.19	111.02
2	A	750	NAG	C2-N2-C7	-2.11	120.07	122.90
2	A	850	NAG	C1-O5-C5	2.05	114.94	112.19

There are no chirality outliers.

All (8) torsion outliers are listed below:

Mol	Chain	Res	Type	Atoms
2	A	850	NAG	C8-C7-N2-C2
2	A	850	NAG	O7-C7-N2-C2
2	A	700	NAG	C8-C7-N2-C2
2	A	700	NAG	O7-C7-N2-C2
2	A	900	NAG	C8-C7-N2-C2

Continued on next page...

Continued from previous page...

Mol	Chain	Res	Type	Atoms
2	A	900	NAG	O7-C7-N2-C2
2	A	900	NAG	C3-C2-N2-C7
2	A	900	NAG	C1-C2-N2-C7

There are no ring outliers.

3 monomers are involved in 8 short contacts:

Mol	Chain	Res	Type	Clashes	Symm-Clashes
2	A	700	NAG	2	0
2	A	750	NAG	4	0
2	A	850	NAG	2	0

5.7 Other polymers [i](#)

There are no such residues in this entry.

5.8 Polymer linkage issues [i](#)

There are no chain breaks in this entry.

6 Fit of model and data [i](#)

6.1 Protein, DNA and RNA chains [i](#)

In the following table, the column labelled ‘#RSRZ > 2’ contains the number (and percentage) of RSRZ outliers, followed by percent RSRZ outliers for the chain as percentile scores relative to all X-ray entries and entries of similar resolution. The OWAB column contains the minimum, median, 95th percentile and maximum values of the occupancy-weighted average B-factor per residue. The column labelled ‘Q < 0.9’ lists the number of (and percentage) of residues with an average occupancy less than 0.9.

Mol	Chain	Analysed	<RSRZ>	#RSRZ>2	OWAB(Å ²)	Q<0.9
1	A	464/524 (88%)	0.04	12 (2%) 57 34	2, 31, 71, 83	0

All (12) RSRZ outliers are listed below:

Mol	Chain	Res	Type	RSRZ
1	A	464	SER	4.1
1	A	443	CYS	3.4
1	A	186	CYS	3.1
1	A	159	ASP	2.7
1	A	482	ALA	2.7
1	A	508	PHE	2.6
1	A	454	VAL	2.6
1	A	501	SER	2.6
1	A	506	PHE	2.5
1	A	502	ALA	2.4
1	A	485	HIS	2.3
1	A	458	ASP	2.3

6.2 Non-standard residues in protein, DNA, RNA chains [i](#)

There are no non-standard protein/DNA/RNA residues in this entry.

6.3 Carbohydrates [i](#)

There are no oligosaccharides in this entry.

6.4 Ligands [i](#)

In the following table, the Atoms column lists the number of modelled atoms in the group and the number defined in the chemical component dictionary. The B-factors column lists the minimum,

median, 95th percentile and maximum values of B factors of atoms in the group. The column labelled 'Q < 0.9' lists the number of atoms with occupancy less than 0.9.

Mol	Type	Chain	Res	Atoms	RSCC	RSR	B-factors(Å ²)	Q<0.9
2	NAG	A	850	14/15	0.42	0.16	98,109,111,111	0
2	NAG	A	900	14/15	0.67	0.14	80,89,92,92	0
2	NAG	A	700	14/15	0.76	0.11	53,58,64,64	0
2	NAG	A	800	14/15	0.84	0.17	37,44,47,49	0
2	NAG	A	750	14/15	0.95	0.08	21,24,29,35	0

6.5 Other polymers [i](#)

There are no such residues in this entry.