



Full wwPDB X-ray Structure Validation Report ⓘ

Mar 8, 2026 – 08:29 AM UTC

PDB ID : 2ECK / pdb_00002eck
Title : STRUCTURE OF PHOSPHOTRANSFERASE
Authors : Berry, M.B.; Bilderback, T.; Glaser, M.; Phillips Jr., G.N.
Deposited on : 1996-12-16
Resolution : 2.80 Å(reported)

This is a Full wwPDB X-ray Structure Validation Report for a publicly released PDB entry.

We welcome your comments at validation@mail.wwpdb.org

A user guide is available at

<https://www.wwpdb.org/validation/2017/XrayValidationReportHelp>

with specific help available everywhere you see the ⓘ symbol.

The types of validation reports are described at

<http://www.wwpdb.org/validation/2017/FAQs#types>.

The following versions of software and data (see [references ⓘ](#)) were used in the production of this report:

MolProbity : 4-5-2 with Phenix2.0
Mogul : 2022.3.0, CSD as543be (2022)
Xtrriage (Phenix) : **NOT EXECUTED**
EDS : **NOT EXECUTED**
Buster-report : wwPDB partial adaption of 1.1.7 (2018)
Percentile statistics : 20250101.v01 (using entries in the PDB archive January 1st 2025)
Ideal geometry (proteins) : Engh & Huber (2001)
Ideal geometry (DNA, RNA) : Parkinson et al. (1996)
Validation Pipeline (wwPDB-VP) : 2.49

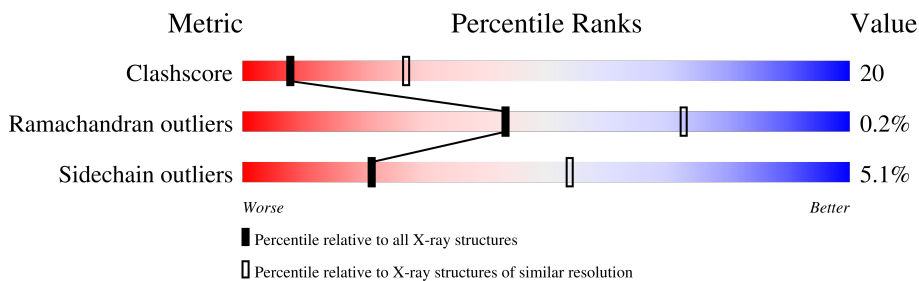
1 Overall quality at a glance

The following experimental techniques were used to determine the structure:

X-RAY DIFFRACTION

The reported resolution of this entry is 2.80 Å.

Percentile scores (ranging between 0-100) for global validation metrics of the entry are shown in the following graphic. The table shows the number of entries on which the scores are based.



Metric	Whole archive (#Entries)	Similar resolution (#Entries, resolution range(Å))
Clashscore	190562	4276 (2.80-2.80)
Ramachandran outliers	187476	4196 (2.80-2.80)
Sidechain outliers	187428	4198 (2.80-2.80)

The table below summarises the geometric issues observed across the polymeric chains and their fit to the electron density. The red, orange, yellow and green segments of the lower bar indicate the fraction of residues that contain outliers for ≥ 3 , 2, 1 and 0 types of geometric quality criteria respectively. A grey segment represents the fraction of residues that are not modelled. The numeric value for each fraction is indicated below the corresponding segment, with a dot representing fractions $\leq 5\%$.

Note EDS was not executed.

Mol	Chain	Length	Quality of chain
1	A	214	
1	B	214	

2 Entry composition [i](#)

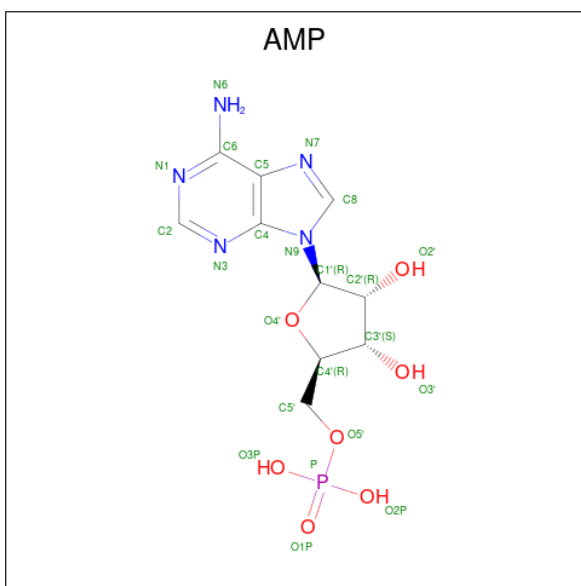
There are 4 unique types of molecules in this entry. The entry contains 4246 atoms, of which 772 are hydrogens and 0 are deuteriums.

In the tables below, the ZeroOcc column contains the number of atoms modelled with zero occupancy, the AltConf column contains the number of residues with at least one atom in alternate conformation and the Trace column contains the number of residues modelled with at most 2 atoms.

- Molecule 1 is a protein called ADENYLATE KINASE.

Mol	Chain	Residues	Atoms					ZeroOcc	AltConf	Trace	
			Total	C	H	N	O				S
1	A	214	2034	1040	378	289	320	7	0	0	0
1	B	214	2034	1040	378	289	320	7	0	0	0

- Molecule 2 is ADENOSINE MONOPHOSPHATE (CCD ID: AMP) (formula: C₁₀H₁₄N₅O₇P).



Mol	Chain	Residues	Atoms					ZeroOcc	AltConf	
			Total	C	H	N	O			P
2	A	1	27	10	4	5	7	1	0	0
2	B	1	27	10	4	5	7	1	0	0

- Molecule 3 is ADENOSINE-5'-DIPHOSPHATE (CCD ID: ADP) (formula: C₁₀H₁₅N₅O₁₀P₂).



Mol	Chain	Residues	Atoms					ZeroOcc	AltConf	
			Total	C	H	N	O			P
3	A	1	31	10	4	5	10	2	0	0
3	B	1	31	10	4	5	10	2	0	0

- Molecule 4 is water.

Mol	Chain	Residues	Atoms		ZeroOcc	AltConf
			Total	O		
4	A	42	42	42	0	0
4	B	20	20	20	0	0

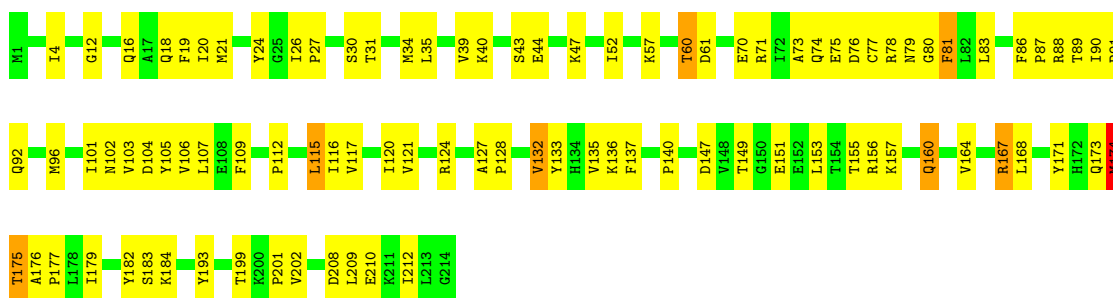
3 Residue-property plots [i](#)

These plots are drawn for all protein, RNA, DNA and oligosaccharide chains in the entry. The first graphic for a chain summarises the proportions of the various outlier classes displayed in the second graphic. The second graphic shows the sequence view annotated by issues in geometry. Residues are color-coded according to the number of geometric quality criteria for which they contain at least one outlier: green = 0, yellow = 1, orange = 2 and red = 3 or more. Stretches of 2 or more consecutive residues without any outlier are shown as a green connector. Residues present in the sample, but not in the model, are shown in grey.

Note EDS was not executed.

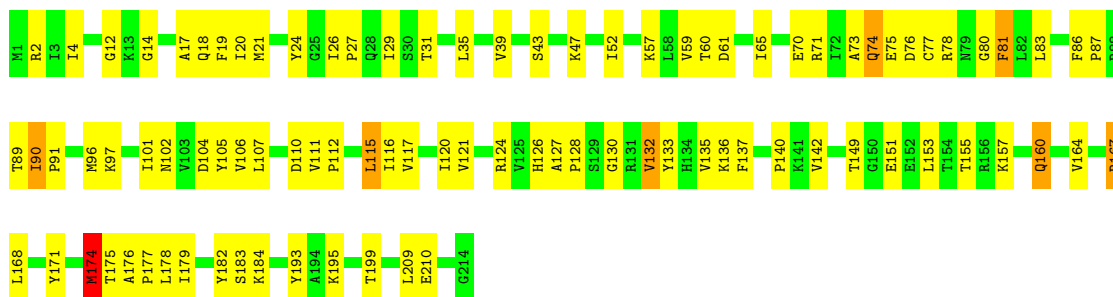
- Molecule 1: ADENYLATE KINASE

Chain A: 



- Molecule 1: ADENYLATE KINASE

Chain B: 



4 Data and refinement statistics

Xtrriage (Phenix) and EDS were not executed - this section is therefore incomplete.

Property	Value	Source
Space group	P 21 21 2	Depositor
Cell constants a, b, c, α , β , γ	73.50Å 84.80Å 80.30Å 90.00° 90.00° 90.00°	Depositor
Resolution (Å)	10.00 – 2.80	Depositor
% Data completeness (in resolution range)	99.0 (10.00-2.80)	Depositor
R_{merge}	0.14	Depositor
R_{sym}	(Not available)	Depositor
Refinement program	X-PLOR	Depositor
R, R_{free}	0.193 , 0.276	Depositor
Estimated twinning fraction	No twinning to report.	Xtrriage
Total number of atoms	4246	wwPDB-VP
Average B, all atoms (Å ²)	20.0	wwPDB-VP

5 Model quality [i](#)

5.1 Standard geometry [i](#)

Bond lengths and bond angles in the following residue types are not validated in this section: AMP, ADP

The Z score for a bond length (or angle) is the number of standard deviations the observed value is removed from the expected value. A bond length (or angle) with $|Z| > 5$ is considered an outlier worth inspection. RMSZ is the root-mean-square of all Z scores of the bond lengths (or angles).

Mol	Chain	Bond lengths		Bond angles	
		RMSZ	# Z >5	RMSZ	# Z >5
1	A	0.81	0/1680	1.17	8/2262 (0.4%)
1	B	0.77	1/1680 (0.1%)	1.17	9/2262 (0.4%)
All	All	0.79	1/3360 (0.0%)	1.17	17/4524 (0.4%)

All (1) bond length outliers are listed below:

Mol	Chain	Res	Type	Atoms	Z	Observed(Å)	Ideal(Å)
1	B	90	ILE	CA-CB	7.57	1.58	1.54

All (17) bond angle outliers are listed below:

Mol	Chain	Res	Type	Atoms	Z	Observed(°)	Ideal(°)
1	B	116	ILE	N-CA-C	10.19	120.19	110.30
1	A	116	ILE	N-CA-C	8.97	119.03	110.42
1	A	183	SER	N-CA-C	-7.53	103.01	111.07
1	B	183	SER	N-CA-C	-7.14	103.43	111.07
1	A	120	ILE	N-CA-C	7.10	117.86	110.62
1	A	132	VAL	N-CA-C	6.71	117.50	108.11
1	B	106	VAL	N-CA-C	-6.39	98.91	108.12
1	B	120	ILE	N-CA-C	6.30	117.04	110.62
1	A	174	MET	N-CA-C	6.06	120.77	112.04
1	B	137	PHE	N-CA-C	5.98	120.30	112.89
1	B	111	VAL	CA-C-N	5.66	125.58	119.76
1	B	111	VAL	C-N-CA	5.66	125.58	119.76
1	A	137	PHE	N-CA-C	5.63	119.87	112.89
1	B	132	VAL	N-CA-C	5.57	115.91	108.11
1	B	174	MET	N-CA-C	5.50	119.96	112.04
1	A	106	VAL	N-CA-C	-5.43	99.74	107.77
1	A	147	ASP	N-CA-C	5.14	117.79	111.82

There are no chirality outliers.

There are no planarity outliers.

5.2 Too-close contacts [i](#)

In the following table, the Non-H and H(model) columns list the number of non-hydrogen atoms and hydrogen atoms in the chain respectively. The H(added) column lists the number of hydrogen atoms added and optimized by MolProbity. The Clashes column lists the number of clashes within the asymmetric unit, whereas Symm-Clashes lists symmetry-related clashes.

Mol	Chain	Non-H	H(model)	H(added)	Clashes	Symm-Clashes
1	A	1656	378	1685	69	1
1	B	1656	378	1685	67	0
2	A	23	4	12	0	0
2	B	23	4	12	1	0
3	A	27	4	12	2	0
3	B	27	4	12	2	0
4	A	42	0	0	4	0
4	B	20	0	0	0	0
All	All	3474	772	3418	135	1

The all-atom clashscore is defined as the number of clashes found per 1000 atoms (including hydrogen atoms). The all-atom clashscore for this structure is 20.

All (135) close contacts within the same asymmetric unit are listed below, sorted by their clash magnitude.

Atom-1	Atom-2	Interatomic distance (Å)	Clash overlap (Å)
1:A:75:GLU:O	1:A:78:ARG:HG2	1.70	0.89
1:B:75:GLU:O	1:B:78:ARG:HG2	1.73	0.89
1:A:149:THR:OG1	1:A:151:GLU:HG3	1.74	0.87
1:B:149:THR:OG1	1:B:151:GLU:HG3	1.83	0.78
1:A:44:GLU:HG3	4:A:250:HOH:O	1.86	0.75
1:B:35:LEU:O	1:B:39:VAL:HG23	1.89	0.72
1:A:112:PRO:HD2	1:A:115:LEU:HD22	1.73	0.70
1:B:115:LEU:CD2	1:B:199:THR:HG22	2.25	0.67
1:A:89:THR:HB	1:A:91:PRO:HD2	1.77	0.65
1:B:19:PHE:HZ	1:B:210:GLU:HG3	1.62	0.64
1:A:71:ARG:HD2	1:A:74:GLN:HE21	1.62	0.64
1:B:19:PHE:CZ	1:B:210:GLU:HG3	2.33	0.63
1:A:167:ARG:HG3	1:A:167:ARG:HH11	1.64	0.63
1:B:61:ASP:O	1:B:65:ILE:HG13	1.99	0.62
1:A:19:PHE:HZ	1:A:210:GLU:HG3	1.64	0.62

Continued on next page...

Continued from previous page...

Atom-1	Atom-2	Interatomic distance (Å)	Clash overlap (Å)
1:B:167:ARG:HH11	1:B:167:ARG:HG3	1.64	0.62
1:A:31:THR:HG21	1:A:86:PHE:HB2	1.82	0.61
1:B:71:ARG:HD2	1:B:74:GLN:HE21	1.64	0.61
1:B:31:THR:HG21	1:B:86:PHE:HB2	1.82	0.60
1:B:70:GLU:O	1:B:73:ALA:HB3	2.02	0.59
1:B:96:MET:HE3	1:B:101:ILE:HG22	1.84	0.59
1:B:176:ALA:HB3	1:B:177:PRO:HD3	1.85	0.59
1:B:112:PRO:HD2	1:B:115:LEU:HD22	1.86	0.58
1:B:83:LEU:HD22	1:B:86:PHE:HD1	1.67	0.58
1:B:71:ARG:NH1	1:B:77:CYS:SG	2.77	0.57
1:A:19:PHE:CZ	1:A:210:GLU:HG3	2.38	0.57
1:B:76:ASP:OD1	1:B:77:CYS:SG	2.47	0.57
1:A:35:LEU:O	1:A:39:VAL:HG23	2.05	0.57
1:A:115:LEU:CD2	1:A:199:THR:HG22	2.35	0.57
1:B:167:ARG:HG3	1:B:167:ARG:NH1	2.20	0.57
1:B:83:LEU:HD22	1:B:86:PHE:CD1	2.40	0.57
1:B:179:ILE:HG23	1:B:193:TYR:OH	2.05	0.56
1:A:167:ARG:HG3	1:A:167:ARG:NH1	2.20	0.56
1:B:160:GLN:O	1:B:164:VAL:HG23	2.04	0.56
1:B:124:ARG:HD3	1:B:155:THR:HG22	1.88	0.56
1:B:115:LEU:HD23	1:B:199:THR:HG22	1.89	0.55
1:A:133:TYR:CD2	1:A:153:LEU:HD11	2.42	0.55
1:B:20:ILE:O	1:B:24:TYR:HD1	1.91	0.54
1:A:79:ASN:HB2	4:A:248:HOH:O	2.08	0.54
1:A:124:ARG:HD3	1:A:155:THR:HG22	1.90	0.54
1:A:179:ILE:HG23	1:A:193:TYR:OH	2.08	0.54
1:A:76:ASP:OD1	1:A:77:CYS:SG	2.54	0.53
1:A:160:GLN:O	1:A:164:VAL:HG23	2.09	0.53
1:B:18:GLN:O	1:B:21:MET:HB3	2.09	0.53
1:B:133:TYR:CD2	1:B:153:LEU:HD11	2.43	0.53
1:A:20:ILE:O	1:A:24:TYR:HD1	1.92	0.53
1:B:127:ALA:HB3	1:B:128:PRO:HD3	1.90	0.53
1:B:104:ASP:C	1:B:105:TYR:HD1	2.17	0.52
1:B:43:SER:O	1:B:47:LYS:HG2	2.09	0.52
1:B:89:THR:HB	1:B:91:PRO:HD2	1.91	0.51
1:B:26:ILE:O	1:B:26:ILE:HG13	2.10	0.51
1:A:168:LEU:O	1:A:171:TYR:HB3	2.11	0.51
1:A:71:ARG:NH1	1:A:77:CYS:SG	2.84	0.51
1:A:104:ASP:C	1:A:105:TYR:HD1	2.19	0.50
1:A:89:THR:OG1	1:A:92:GLN:HG3	2.11	0.50
1:B:96:MET:HE3	1:B:101:ILE:CG2	2.41	0.50

Continued on next page...

Continued from previous page...

Atom-1	Atom-2	Interatomic distance (Å)	Clash overlap (Å)
1:B:90:ILE:HB	1:B:91:PRO:HD3	1.95	0.49
1:A:19:PHE:HZ	1:A:210:GLU:CG	2.26	0.49
1:B:167:ARG:HH11	1:B:167:ARG:CG	2.26	0.49
1:A:83:LEU:HD22	1:A:86:PHE:CD1	2.48	0.48
1:B:19:PHE:HZ	1:B:210:GLU:CG	2.26	0.48
1:B:75:GLU:O	1:B:75:GLU:HG2	2.13	0.48
1:A:117:VAL:O	1:A:121:VAL:HG13	2.14	0.48
1:B:126:HIS:O	1:B:130:GLY:N	2.47	0.47
1:B:135:VAL:HG23	1:B:136:LYS:HG3	1.97	0.47
1:A:167:ARG:HH11	1:A:167:ARG:CG	2.28	0.47
1:B:110:ASP:HB2	1:B:195:LYS:HE3	1.96	0.47
1:A:4:ILE:HD13	1:A:87:PRO:HD2	1.96	0.47
1:B:174:MET:HE3	1:B:174:MET:HA	1.97	0.47
1:B:12:GLY:HA2	3:B:216:ADP:PA	2.55	0.47
1:B:27:PRO:HD2	1:B:80:GLY:O	2.14	0.47
1:A:18:GLN:O	1:A:21:MET:HB3	2.15	0.47
1:A:107:LEU:HD13	1:A:209:LEU:CD2	2.44	0.46
1:B:2:ARG:HB3	1:B:81:PHE:HE1	1.80	0.46
1:A:127:ALA:HB3	1:A:128:PRO:HD3	1.96	0.46
1:A:26:ILE:O	1:A:26:ILE:HG13	2.14	0.46
1:A:27:PRO:HD2	1:A:80:GLY:O	2.16	0.46
1:B:117:VAL:O	1:B:121:VAL:HG13	2.16	0.46
1:A:132:VAL:C	1:A:133:TYR:CD1	2.95	0.45
1:B:14:GLY:O	1:B:17:ALA:HB3	2.17	0.45
1:B:4:ILE:HD13	1:B:87:PRO:HD2	1.99	0.45
1:A:156:ARG:HA	4:A:224:HOH:O	2.17	0.44
1:A:90:ILE:N	1:A:91:PRO:CD	2.79	0.44
1:A:52:ILE:HG22	1:A:57:LYS:O	2.18	0.44
1:A:176:ALA:HB3	1:A:177:PRO:HD3	1.99	0.44
1:B:126:HIS:CE1	1:B:128:PRO:HB2	2.53	0.44
1:A:173:GLN:OE1	1:B:142:VAL:CG2	2.66	0.44
1:B:209:LEU:HD23	1:B:209:LEU:HA	1.85	0.44
1:B:29:ILE:HD12	1:B:81:PHE:HB2	1.98	0.43
1:A:12:GLY:HA2	3:A:216:ADP:O1A	2.17	0.43
1:A:40:LYS:HB3	1:A:40:LYS:HE2	1.71	0.43
1:B:157:LYS:HD3	1:B:157:LYS:H	1.82	0.43
1:B:104:ASP:C	1:B:105:TYR:CD1	2.94	0.43
1:A:133:TYR:CD1	1:A:133:TYR:N	2.85	0.43
1:B:107:LEU:HD13	1:B:209:LEU:CD2	2.48	0.43
1:B:168:LEU:O	1:B:171:TYR:HB3	2.17	0.43
1:B:12:GLY:HA2	3:B:216:ADP:O1A	2.18	0.43

Continued on next page...

Continued from previous page...

Atom-1	Atom-2	Interatomic distance (Å)	Clash overlap (Å)
1:A:70:GLU:O	1:A:73:ALA:HB3	2.19	0.43
1:A:157:LYS:HD3	1:A:157:LYS:H	1.83	0.43
1:A:104:ASP:C	1:A:105:TYR:CD1	2.97	0.43
1:A:43:SER:O	1:A:47:LYS:HG2	2.18	0.43
1:B:132:VAL:C	1:B:133:TYR:CD1	2.96	0.43
1:B:133:TYR:CD2	1:B:140:PRO:HB3	2.54	0.42
1:A:88:ARG:HA	1:A:175:THR:HG23	2.01	0.42
1:A:115:LEU:HD23	1:A:199:THR:HG22	1.99	0.42
1:A:174:MET:HE3	1:A:174:MET:HA	2.01	0.42
1:A:209:LEU:HD23	1:A:209:LEU:HA	1.76	0.42
1:A:90:ILE:HB	1:A:91:PRO:HD3	2.02	0.42
1:A:16:GLN:HG3	1:A:109:PHE:HE2	1.84	0.42
1:B:52:ILE:HD12	1:B:59:VAL:HG22	2.01	0.42
1:A:87:PRO:HG3	1:A:182:TYR:OH	2.19	0.42
1:A:30:SER:O	1:A:34:MET:HG3	2.20	0.41
1:A:107:LEU:HD13	1:A:209:LEU:HD22	2.00	0.41
1:B:90:ILE:N	1:B:91:PRO:CD	2.83	0.41
1:B:31:THR:OG1	2:B:215:AMP:N7	2.42	0.41
1:A:60:THR:O	1:A:61:ASP:C	2.62	0.41
1:B:132:VAL:O	1:B:133:TYR:HD1	2.03	0.41
1:A:160:GLN:HB3	4:A:239:HOH:O	2.20	0.41
1:A:201:PRO:O	1:A:202:VAL:C	2.63	0.41
1:A:89:THR:CB	1:A:91:PRO:HD2	2.49	0.41
1:B:52:ILE:HG22	1:B:57:LYS:O	2.20	0.41
1:A:4:ILE:HG13	1:A:103:VAL:HG11	2.03	0.41
1:A:75:GLU:O	1:A:75:GLU:HG2	2.21	0.41
1:A:96:MET:HE3	1:A:101:ILE:HG22	2.02	0.41
1:A:208:ASP:O	1:A:212:ILE:HG13	2.21	0.41
1:B:176:ALA:O	1:B:178:LEU:N	2.54	0.41
1:A:12:GLY:HA2	3:A:216:ADP:PA	2.60	0.41
1:B:168:LEU:HD23	1:B:168:LEU:HA	1.93	0.41
1:B:89:THR:CB	1:B:91:PRO:HD2	2.51	0.41
1:A:81:PHE:N	1:A:81:PHE:CD1	2.88	0.40
1:A:135:VAL:HG23	1:A:136:LYS:HG3	2.03	0.40
1:B:97:LYS:HE2	1:B:97:LYS:HB3	1.89	0.40
1:A:83:LEU:HD22	1:A:86:PHE:HD1	1.84	0.40
1:B:87:PRO:HG3	1:B:182:TYR:OH	2.22	0.40
1:A:133:TYR:CD2	1:A:140:PRO:HB3	2.57	0.40

All (1) symmetry-related close contacts are listed below. The label for Atom-2 includes the symmetry operator and encoded unit-cell translations to be applied.

Atom-1	Atom-2	Interatomic distance (Å)	Clash overlap (Å)
1:A:78:ARG:HH12	1:A:78:ARG:HH22[2_665]	1.04	0.56

5.3 Torsion angles [i](#)

5.3.1 Protein backbone [i](#)

In the following table, the Percentiles column shows the percent Ramachandran outliers of the chain as a percentile score with respect to all X-ray entries followed by that with respect to entries of similar resolution.

The Analysed column shows the number of residues for which the backbone conformation was analysed, and the total number of residues.

Mol	Chain	Analysed	Favoured	Allowed	Outliers	Percentiles	
1	A	212/214 (99%)	201 (95%)	11 (5%)	0	100	100
1	B	212/214 (99%)	199 (94%)	12 (6%)	1 (0%)	24	55
All	All	424/428 (99%)	400 (94%)	23 (5%)	1 (0%)	43	72

All (1) Ramachandran outliers are listed below:

Mol	Chain	Res	Type
1	B	74	GLN

5.3.2 Protein sidechains [i](#)

In the following table, the Percentiles column shows the percent sidechain outliers of the chain as a percentile score with respect to all X-ray entries followed by that with respect to entries of similar resolution.

The Analysed column shows the number of residues for which the sidechain conformation was analysed, and the total number of residues.

Mol	Chain	Analysed	Rotameric	Outliers	Percentiles	
1	A	175/175 (100%)	166 (95%)	9 (5%)	21	54
1	B	175/175 (100%)	166 (95%)	9 (5%)	21	54
All	All	350/350 (100%)	332 (95%)	18 (5%)	21	54

All (18) residues with a non-rotameric sidechain are listed below:

Mol	Chain	Res	Type
1	A	60	THR
1	A	81	PHE
1	A	102	ASN
1	A	115	LEU
1	A	160	GLN
1	A	167	ARG
1	A	174	MET
1	A	175	THR
1	A	184	LYS
1	B	60	THR
1	B	81	PHE
1	B	102	ASN
1	B	115	LEU
1	B	160	GLN
1	B	167	ARG
1	B	174	MET
1	B	175	THR
1	B	184	LYS

Sometimes sidechains can be flipped to improve hydrogen bonding and reduce clashes. All (6) such sidechains are listed below:

Mol	Chain	Res	Type
1	A	16	GLN
1	A	74	GLN
1	A	138	ASN
1	B	16	GLN
1	B	74	GLN
1	B	138	ASN

5.3.3 RNA [i](#)

There are no RNA molecules in this entry.

5.4 Non-standard residues in protein, DNA, RNA chains [i](#)

There are no non-standard protein/DNA/RNA residues in this entry.

5.5 Carbohydrates [i](#)

There are no oligosaccharides in this entry.

5.6 Ligand geometry

4 ligands are modelled in this entry.

In the following table, the Counts columns list the number of bonds (or angles) for which Mogul statistics could be retrieved, the number of bonds (or angles) that are observed in the model and the number of bonds (or angles) that are defined in the Chemical Component Dictionary. The Link column lists molecule types, if any, to which the group is linked. The Z score for a bond length (or angle) is the number of standard deviations the observed value is removed from the expected value. A bond length (or angle) with $|Z| > 2$ is considered an outlier worth inspection. RMSZ is the root-mean-square of all Z scores of the bond lengths (or angles).

Mol	Type	Chain	Res	Link	Bond lengths			Bond angles		
					Counts	RMSZ	# Z > 2	Counts	RMSZ	# Z > 2
3	ADP	A	216	-	28,29,29	1.59	5 (17%)	43,45,45	2.41	14 (32%)
2	AMP	A	215	-	25,25,25	1.48	3 (12%)	37,38,38	2.79	11 (29%)
3	ADP	B	216	-	28,29,29	1.18	2 (7%)	43,45,45	2.22	14 (32%)
2	AMP	B	215	-	25,25,25	1.15	2 (8%)	37,38,38	2.46	16 (43%)

In the following table, the Chirals column lists the number of chiral outliers, the number of chiral centers analysed, the number of these observed in the model and the number defined in the Chemical Component Dictionary. Similar counts are reported in the Torsion and Rings columns. '-' means no outliers of that kind were identified.

Mol	Type	Chain	Res	Link	Chirals	Torsions	Rings
3	ADP	A	216	-	-	6/16/32/32	0/3/3/3
2	AMP	A	215	-	-	2/10/26/26	0/3/3/3
3	ADP	B	216	-	-	4/16/32/32	0/3/3/3
2	AMP	B	215	-	-	2/10/26/26	0/3/3/3

All (12) bond length outliers are listed below:

Mol	Chain	Res	Type	Atoms	Z	Observed(Å)	Ideal(Å)
2	A	215	AMP	C5-N7	-4.27	1.31	1.39
3	A	216	ADP	C5-N7	-4.22	1.31	1.39
3	B	216	ADP	C5-N7	-3.10	1.33	1.39
2	B	215	AMP	C5-N7	-2.97	1.33	1.39
2	A	215	AMP	C4-N9	-2.82	1.31	1.37
2	A	215	AMP	C8-N9	-2.47	1.33	1.37
3	A	216	ADP	PA-O3A	-2.36	1.56	1.59
3	B	216	ADP	PA-O3A	2.27	1.62	1.59
2	B	215	AMP	C4-N9	-2.12	1.33	1.37
3	A	216	ADP	PB-O3B	-2.10	1.47	1.54

Continued on next page...

Continued from previous page...

Mol	Chain	Res	Type	Atoms	Z	Observed(Å)	Ideal(Å)
3	A	216	ADP	C8-N9	-2.03	1.34	1.37
3	A	216	ADP	C8-N7	2.02	1.35	1.31

All (55) bond angle outliers are listed below:

Mol	Chain	Res	Type	Atoms	Z	Observed(°)	Ideal(°)
2	A	215	AMP	C5-C4-N3	-8.05	115.64	126.72
3	A	216	ADP	C5-C4-N3	-7.76	116.03	126.72
2	A	215	AMP	N3-C4-N9	7.33	139.63	127.17
3	B	216	ADP	C5-C4-N3	-7.01	117.06	126.72
2	B	215	AMP	N3-C4-N9	6.92	138.93	127.17
2	B	215	AMP	C5-C4-N3	-6.48	117.80	126.72
3	A	216	ADP	N3-C4-N9	6.18	137.68	127.17
3	B	216	ADP	N3-C4-N9	6.01	137.38	127.17
2	A	215	AMP	C6-C5-C4	5.34	124.47	117.18
2	A	215	AMP	C6-C5-N7	-5.05	122.36	132.09
2	A	215	AMP	N3-C2-N1	-4.86	121.22	128.58
3	B	216	ADP	N3-C2-N1	-4.74	121.40	128.58
3	A	216	ADP	N3-C2-N1	-4.49	121.78	128.58
2	B	215	AMP	C6-C5-C4	4.40	123.19	117.18
2	A	215	AMP	O4'-C1'-N9	-4.40	99.64	108.09
2	B	215	AMP	C6-C5-N7	-4.36	123.68	132.09
2	A	215	AMP	C2-N3-C4	4.21	122.12	111.83
3	A	216	ADP	C2-N3-C4	4.16	122.00	111.83
3	B	216	ADP	C2-N3-C4	4.06	121.75	111.83
3	A	216	ADP	C6-C5-C4	3.97	122.60	117.18
3	A	216	ADP	C6-C5-N7	-3.93	124.51	132.09
3	B	216	ADP	C6-C5-N7	-3.52	125.30	132.09
2	B	215	AMP	C4-N9-C8	3.43	109.34	105.74
3	A	216	ADP	N6-C6-N1	3.21	125.53	118.38
3	A	216	ADP	O4'-C1'-N9	-3.16	102.03	108.09
3	B	216	ADP	C6-C5-C4	3.12	121.43	117.18
2	B	215	AMP	O4'-C1'-N9	-3.03	102.26	108.09
3	B	216	ADP	O4'-C1'-N9	-3.01	102.30	108.09
2	B	215	AMP	N6-C6-N1	2.91	124.86	118.38
2	A	215	AMP	N6-C6-N1	2.84	124.71	118.38
3	A	216	ADP	O2A-PA-O3A	2.66	114.47	107.27
3	B	216	ADP	N6-C6-N1	2.57	124.09	118.38
2	B	215	AMP	C2-N3-C4	2.43	117.77	111.83
3	A	216	ADP	O5'-C5'-C4'	2.41	117.20	108.99
2	B	215	AMP	N9-C8-N7	-2.40	110.53	113.94
2	B	215	AMP	C5-C4-N9	-2.36	103.24	105.81

Continued on next page...

Continued from previous page...

Mol	Chain	Res	Type	Atoms	Z	Observed(°)	Ideal(°)
3	B	216	ADP	C4-C5-N7	2.34	113.25	110.58
2	B	215	AMP	C5-C6-N6	-2.28	117.65	123.29
2	A	215	AMP	C4-C5-N7	2.26	113.17	110.58
3	A	216	ADP	C5-C6-N6	-2.25	117.71	123.29
3	A	216	ADP	O2B-PB-O3A	-2.24	97.12	104.64
3	B	216	ADP	O3B-PB-O2B	2.21	116.09	107.80
2	B	215	AMP	O3'-C3'-C2'	2.20	118.86	111.82
2	B	215	AMP	C4-C5-N7	2.19	113.09	110.58
3	B	216	ADP	O3B-PB-O1B	2.16	119.25	110.83
2	B	215	AMP	O4'-C4'-C5'	2.14	116.20	109.33
3	A	216	ADP	C2'-C3'-C4'	2.10	106.66	102.61
2	B	215	AMP	O3P-P-O1P	2.08	118.94	110.83
2	A	215	AMP	C4-N9-C8	2.07	107.91	105.74
3	B	216	ADP	O2A-PA-O1A	2.06	122.03	112.44
3	B	216	ADP	C5-C6-N6	-2.06	118.19	123.29
3	B	216	ADP	C4'-O4'-C1'	2.03	113.94	109.47
2	B	215	AMP	N3-C2-N1	-2.02	125.52	128.58
2	A	215	AMP	O3P-P-O5'	-2.02	101.40	106.67
3	A	216	ADP	C4-C5-N7	2.00	112.87	110.58

There are no chirality outliers.

All (14) torsion outliers are listed below:

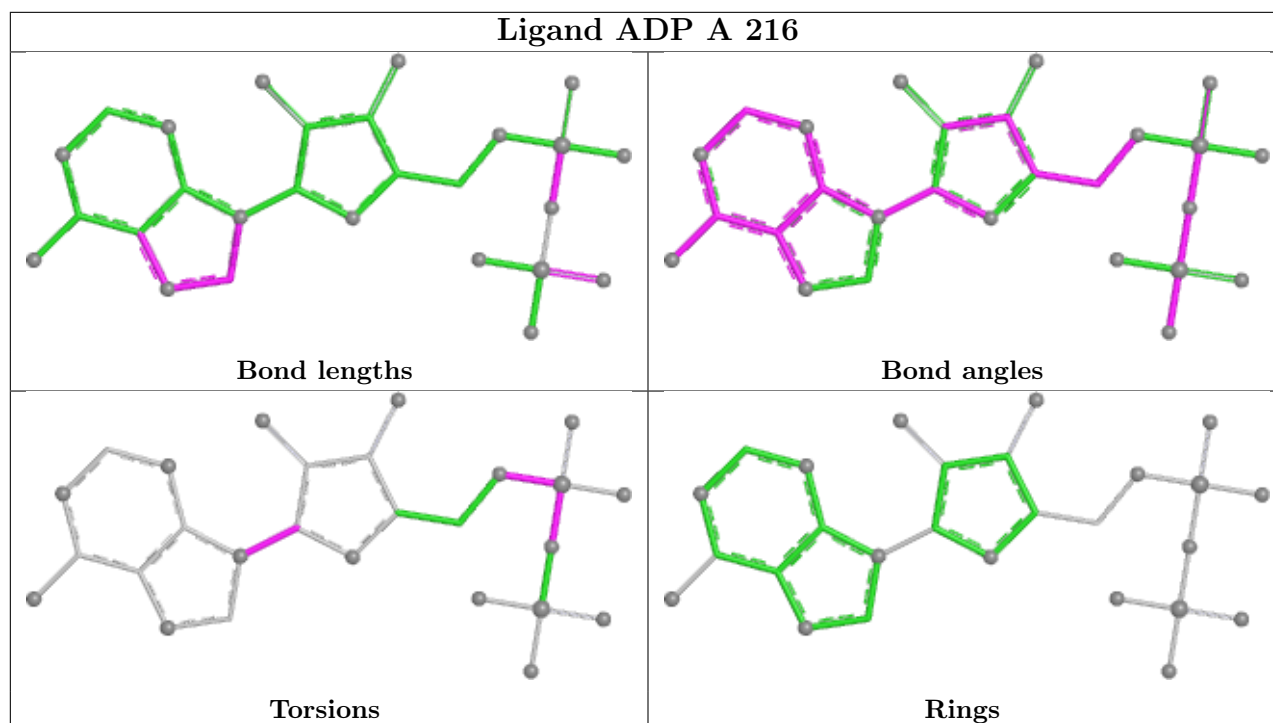
Mol	Chain	Res	Type	Atoms
3	A	216	ADP	C5'-O5'-PA-O2A
3	A	216	ADP	C5'-O5'-PA-O3A
3	B	216	ADP	C5'-O5'-PA-O2A
2	A	215	AMP	C5'-O5'-P-O1P
3	A	216	ADP	C2'-C1'-N9-C8
3	B	216	ADP	C2'-C1'-N9-C8
3	A	216	ADP	C5'-O5'-PA-O1A
3	B	216	ADP	C5'-O5'-PA-O3A
2	B	215	AMP	C5'-O5'-P-O1P
2	A	215	AMP	C5'-O5'-P-O3P
2	B	215	AMP	C5'-O5'-P-O3P
3	A	216	ADP	PB-O3A-PA-O1A
3	B	216	ADP	PB-O3A-PA-O1A
3	A	216	ADP	O4'-C1'-N9-C8

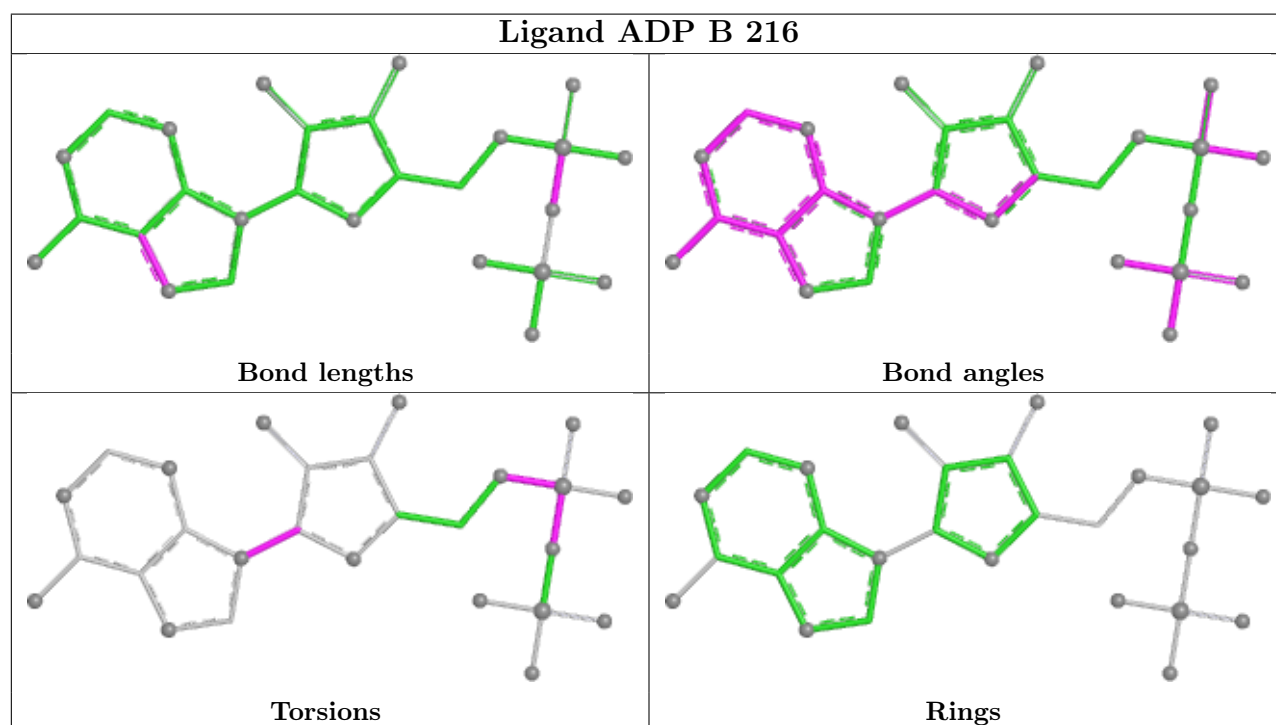
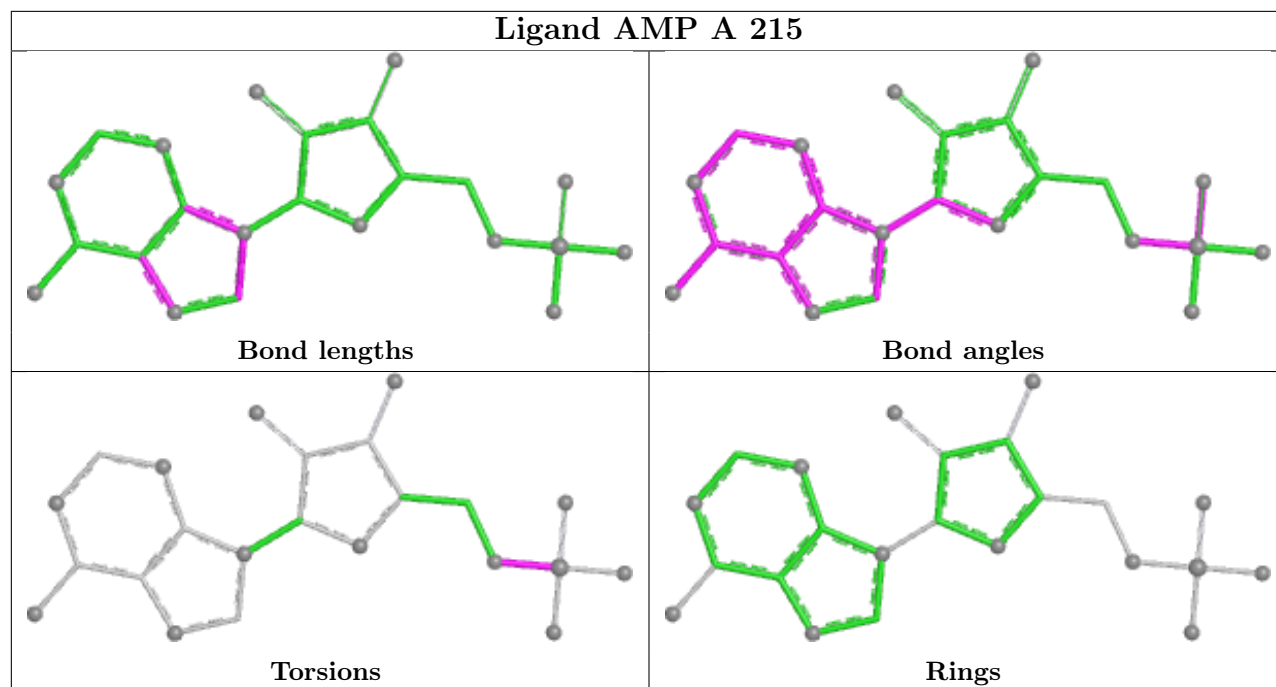
There are no ring outliers.

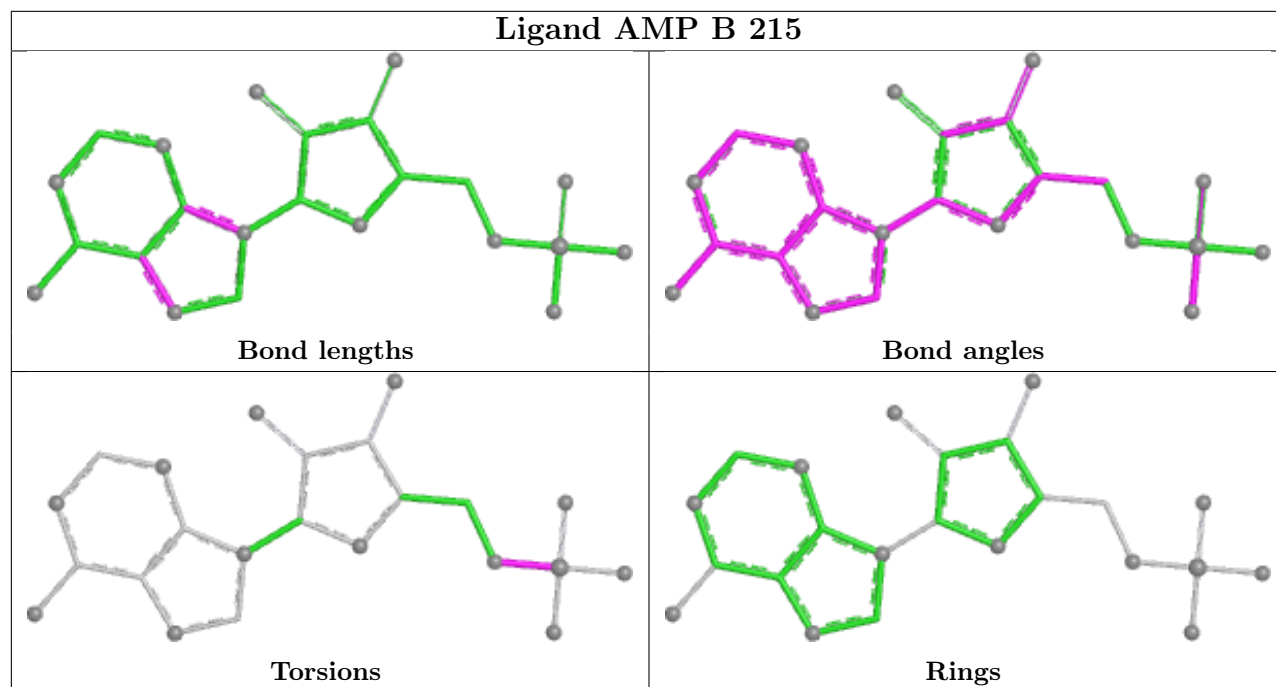
3 monomers are involved in 5 short contacts:

Mol	Chain	Res	Type	Clashes	Symm-Clashes
3	A	216	ADP	2	0
3	B	216	ADP	2	0
2	B	215	AMP	1	0

The following is a two-dimensional graphical depiction of Mogul quality analysis of bond lengths, bond angles, torsion angles, and ring geometry for all instances of the Ligand of Interest. In addition, ligands with molecular weight > 250 and outliers as shown on the validation Tables will also be included. For torsion angles, if less than 5% of the Mogul distribution of torsion angles is within 10 degrees of the torsion angle in question, then that torsion angle is considered an outlier. Any bond that is central to one or more torsion angles identified as an outlier by Mogul will be highlighted in the graph. For rings, the root-mean-square deviation (RMSD) between the ring in question and similar rings identified by Mogul is calculated over all ring torsion angles. If the average RMSD is greater than 60 degrees and the minimal RMSD between the ring in question and any Mogul-identified rings is also greater than 60 degrees, then that ring is considered an outlier. The outliers are highlighted in purple. The color gray indicates Mogul did not find sufficient equivalents in the CSD to analyse the geometry.







5.7 Other polymers [i](#)

There are no such residues in this entry.

5.8 Polymer linkage issues [i](#)

There are no chain breaks in this entry.

6 Fit of model and data

6.1 Protein, DNA and RNA chains

EDS was not executed - this section is therefore empty.

6.2 Non-standard residues in protein, DNA, RNA chains

EDS was not executed - this section is therefore empty.

6.3 Carbohydrates

EDS was not executed - this section is therefore empty.

6.4 Ligands

EDS was not executed - this section is therefore empty.

6.5 Other polymers

EDS was not executed - this section is therefore empty.