



Full wwPDB X-ray Structure Validation Report ⓘ

Mar 5, 2026 – 10:28 AM UTC

PDB ID : 4EE4 / pdb_00004ee4
Title : Crystal structure of human M340H-beta-1,4-galactosyltransferase-1 (M340H-B4GAL-T1) in complex with tetrasaccharide from Lacto-N-neohexose
Authors : Ramakrishnan, B.; Qasba, P.K.
Deposited on : 2012-03-28
Resolution : 1.95 Å(reported)

This is a Full wwPDB X-ray Structure Validation Report for a publicly released PDB entry.

We welcome your comments at validation@mail.wwpdb.org

A user guide is available at

<https://www.wwpdb.org/validation/2017/XrayValidationReportHelp>

with specific help available everywhere you see the ⓘ symbol.

The types of validation reports are described at

<http://www.wwpdb.org/validation/2017/FAQs#types>.

The following versions of software and data (see [references ⓘ](#)) were used in the production of this report:

MolProbity : 4-5-2 with Phenix2.0
Mogul : 2022.3.0, CSD as543be (2022)
Xtrriage (Phenix) : 2.0
EDS : 3.0
Buster-report : wwPDB partial adaption of 1.1.7 (2018)
Percentile statistics : 20250101.v01 (using entries in the PDB archive January 1st 2025)
CCP4 : 9.0.010 (Gargrove)
Density-Fitness : 1.0.12
Ideal geometry (proteins) : Engh & Huber (2001)
Ideal geometry (DNA, RNA) : Parkinson et al. (1996)
Validation Pipeline (wwPDB-VP) : 2.49

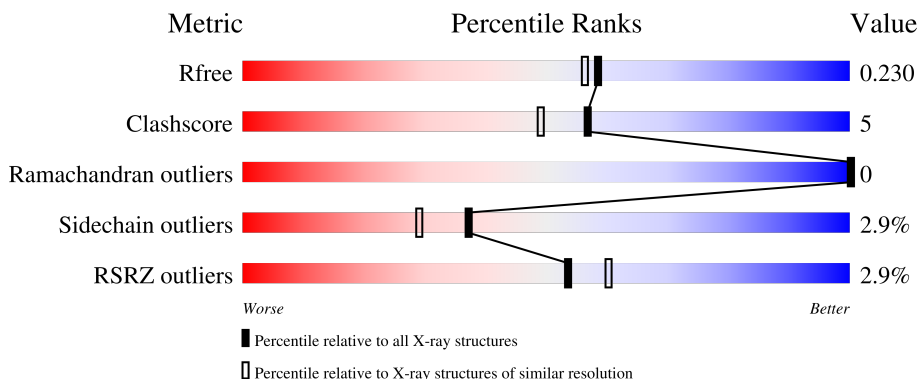
1 Overall quality at a glance

The following experimental techniques were used to determine the structure:

X-RAY DIFFRACTION

The reported resolution of this entry is 1.95 Å.

Percentile scores (ranging between 0-100) for global validation metrics of the entry are shown in the following graphic. The table shows the number of entries on which the scores are based.



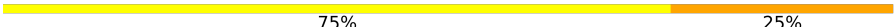
Metric	Whole archive (#Entries)	Similar resolution (#Entries, resolution range(Å))
R_{free}	180053	3494 (1.96-1.96)
Clashscore	190562	3612 (1.96-1.96)
Ramachandran outliers	187476	3587 (1.96-1.96)
Sidechain outliers	187428	3587 (1.96-1.96)
RSRZ outliers	180081	3495 (1.96-1.96)

The table below summarises the geometric issues observed across the polymeric chains and their fit to the electron density. The red, orange, yellow and green segments of the lower bar indicate the fraction of residues that contain outliers for ≥ 3 , 2, 1 and 0 types of geometric quality criteria respectively. A grey segment represents the fraction of residues that are not modelled. The numeric value for each fraction is indicated below the corresponding segment, with a dot representing fractions $\leq 5\%$. The upper red bar (where present) indicates the fraction of residues that have poor fit to the electron density. The numeric value is given above the bar.

Mol	Chain	Length	Quality of chain
1	A	287	 6% 83% 11% • 5%
1	B	287	 6% 83% 11% • 5%
1	C	287	 6% 84% 11% 5%
2	D	4	 100%
2	E	4	 100%

Continued on next page...

Continued from previous page...

Mol	Chain	Length	Quality of chain
2	F	4	 75% 25%

2 Entry composition [i](#)

There are 7 unique types of molecules in this entry. The entry contains 7755 atoms, of which 0 are hydrogens and 0 are deuteriums.

In the tables below, the ZeroOcc column contains the number of atoms modelled with zero occupancy, the AltConf column contains the number of residues with at least one atom in alternate conformation and the Trace column contains the number of residues modelled with at most 2 atoms.

- Molecule 1 is a protein called Beta-1,4-galactosyltransferase 1.

Mol	Chain	Residues	Atoms					ZeroOcc	AltConf	Trace
			Total	C	N	O	S			
1	A	273	2233	1430	387	405	11	0	3	0
1	B	273	2238	1433	386	408	11	0	4	0
1	C	273	2224	1424	387	402	11	0	1	0

There are 51 discrepancies between the modelled and reference sequences:

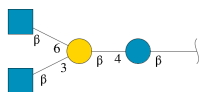
Chain	Residue	Modelled	Actual	Comment	Reference
A	112	ALA	-	expression tag	UNP P15291
A	113	SER	-	expression tag	UNP P15291
A	114	MET	-	expression tag	UNP P15291
A	115	THR	-	expression tag	UNP P15291
A	116	GLY	-	expression tag	UNP P15291
A	117	GLY	-	expression tag	UNP P15291
A	118	GLN	-	expression tag	UNP P15291
A	119	GLN	-	expression tag	UNP P15291
A	120	MET	-	expression tag	UNP P15291
A	121	GLY	-	expression tag	UNP P15291
A	122	ARG	-	expression tag	UNP P15291
A	123	GLY	-	expression tag	UNP P15291
A	124	SER	-	expression tag	UNP P15291
A	125	ALA	-	expression tag	UNP P15291
A	337	THR	ARG	engineered mutation	UNP P15291
A	338	THR	CYS	engineered mutation	UNP P15291
A	340	HIS	MET	engineered mutation	UNP P15291
B	112	ALA	-	expression tag	UNP P15291
B	113	SER	-	expression tag	UNP P15291
B	114	MET	-	expression tag	UNP P15291
B	115	THR	-	expression tag	UNP P15291
B	116	GLY	-	expression tag	UNP P15291
B	117	GLY	-	expression tag	UNP P15291

Continued on next page...

Continued from previous page...

Chain	Residue	Modelled	Actual	Comment	Reference
B	118	GLN	-	expression tag	UNP P15291
B	119	GLN	-	expression tag	UNP P15291
B	120	MET	-	expression tag	UNP P15291
B	121	GLY	-	expression tag	UNP P15291
B	122	ARG	-	expression tag	UNP P15291
B	123	GLY	-	expression tag	UNP P15291
B	124	SER	-	expression tag	UNP P15291
B	125	ALA	-	expression tag	UNP P15291
B	337	THR	ARG	engineered mutation	UNP P15291
B	338	THR	CYS	engineered mutation	UNP P15291
B	340	HIS	MET	engineered mutation	UNP P15291
C	112	ALA	-	expression tag	UNP P15291
C	113	SER	-	expression tag	UNP P15291
C	114	MET	-	expression tag	UNP P15291
C	115	THR	-	expression tag	UNP P15291
C	116	GLY	-	expression tag	UNP P15291
C	117	GLY	-	expression tag	UNP P15291
C	118	GLN	-	expression tag	UNP P15291
C	119	GLN	-	expression tag	UNP P15291
C	120	MET	-	expression tag	UNP P15291
C	121	GLY	-	expression tag	UNP P15291
C	122	ARG	-	expression tag	UNP P15291
C	123	GLY	-	expression tag	UNP P15291
C	124	SER	-	expression tag	UNP P15291
C	125	ALA	-	expression tag	UNP P15291
C	337	THR	ARG	engineered mutation	UNP P15291
C	338	THR	CYS	engineered mutation	UNP P15291
C	340	HIS	MET	engineered mutation	UNP P15291

- Molecule 2 is an oligosaccharide called 2-acetamido-2-deoxy-beta-D-glucopyranose-(1-3)-[2-acetamido-2-deoxy-beta-D-glucopyranose-(1-6)]beta-D-galactopyranose-(1-4)-beta-D-glucopyranose.



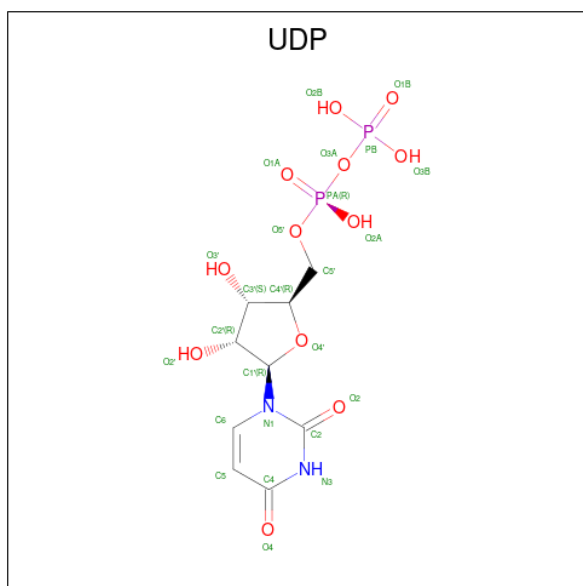
Mol	Chain	Residues	Atoms				ZeroOcc	AltConf	Trace
2	D	4	Total	C	N	O	0	0	0
			51	28	2	21			
2	E	4	Total	C	N	O	0	0	0
			51	28	2	21			

Continued on next page...

Continued from previous page...

Mol	Chain	Residues	Atoms				ZeroOcc	AltConf	Trace
2	F	4	Total	C	N	O	0	0	0
			51	28	2	21			

- Molecule 3 is URIDINE-5'-DIPHOSPHATE (CCD ID: UDP) (formula: C₉H₁₄N₂O₁₂P₂).



Mol	Chain	Residues	Atoms					ZeroOcc	AltConf
3	A	1	Total	C	N	O	P	0	0
			25	9	2	12	2		
3	B	1	Total	C	N	O	P	0	0
			25	9	2	12	2		
3	C	1	Total	C	N	O	P	0	0
			25	9	2	12	2		

- Molecule 4 is MANGANESE (II) ION (CCD ID: MN) (formula: Mn).

Mol	Chain	Residues	Atoms		ZeroOcc	AltConf
4	A	1	Total	Mn	0	0
			1	1		
4	B	1	Total	Mn	0	0
			1	1		
4	C	1	Total	Mn	0	0
			1	1		

- Molecule 5 is SULFATE ION (CCD ID: SO4) (formula: O₄S).



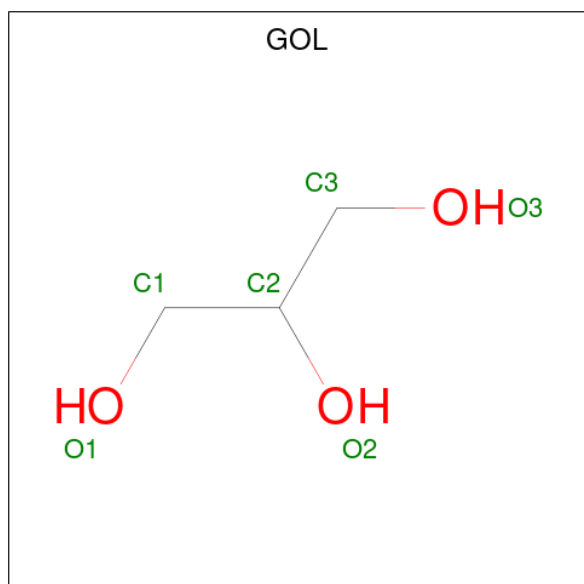
Mol	Chain	Residues	Atoms			ZeroOcc	AltConf
5	A	1	Total	O	S	0	0
			5	4	1		
5	A	1	Total	O	S	0	0
			5	4	1		
5	A	1	Total	O	S	0	0
			5	4	1		
5	A	1	Total	O	S	0	0
			5	4	1		
5	A	1	Total	O	S	0	0
			5	4	1		
5	A	1	Total	O	S	0	0
			5	4	1		
5	B	1	Total	O	S	0	0
			5	4	1		
5	B	1	Total	O	S	0	0
			5	4	1		
5	B	1	Total	O	S	0	0
			5	4	1		
5	B	1	Total	O	S	0	0
			5	4	1		
5	B	1	Total	O	S	0	0
			5	4	1		

Continued on next page...

Continued from previous page...

Mol	Chain	Residues	Atoms	ZeroOcc	AltConf
5	B	1	Total O S 5 4 1	0	0
5	B	1	Total O S 5 4 1	0	0
5	B	1	Total O S 5 4 1	0	0
5	B	1	Total O S 5 4 1	0	0
5	C	1	Total O S 5 4 1	0	0
5	C	1	Total O S 5 4 1	0	0
5	C	1	Total O S 5 4 1	0	0
5	C	1	Total O S 5 4 1	0	0

- Molecule 6 is GLYCEROL (CCD ID: GOL) (formula: C₃H₈O₃).



Mol	Chain	Residues	Atoms	ZeroOcc	AltConf
6	A	1	Total C O 6 3 3	0	0
6	B	1	Total C O 6 3 3	0	0
6	B	1	Total C O 6 3 3	0	0

Continued on next page...

Continued from previous page...

Mol	Chain	Residues	Atoms			ZeroOcc	AltConf
6	C	1	Total	C	O	0	0
			6	3	3		

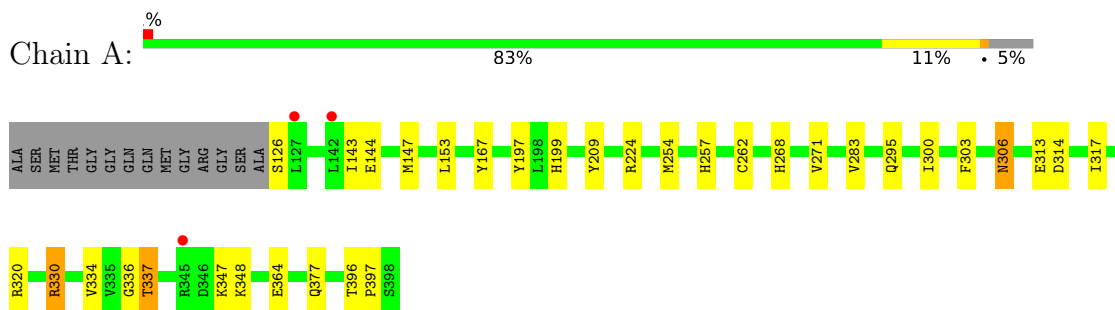
- Molecule 7 is water.

Mol	Chain	Residues	Atoms		ZeroOcc	AltConf
7	A	246	Total	O	0	0
			246	246		
7	B	269	Total	O	0	0
			269	269		
7	C	180	Total	O	0	0
			180	180		

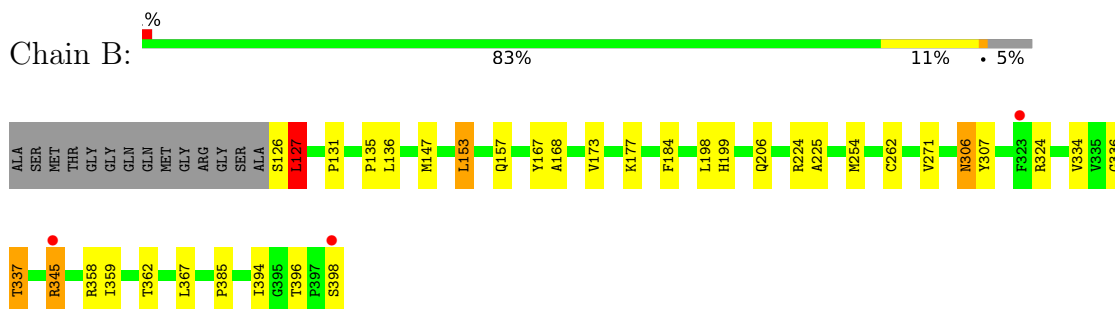
3 Residue-property plots [i](#)

These plots are drawn for all protein, RNA, DNA and oligosaccharide chains in the entry. The first graphic for a chain summarises the proportions of the various outlier classes displayed in the second graphic. The second graphic shows the sequence view annotated by issues in geometry and electron density. Residues are color-coded according to the number of geometric quality criteria for which they contain at least one outlier: green = 0, yellow = 1, orange = 2 and red = 3 or more. A red dot above a residue indicates a poor fit to the electron density ($RSRZ > 2$). Stretches of 2 or more consecutive residues without any outlier are shown as a green connector. Residues present in the sample, but not in the model, are shown in grey.

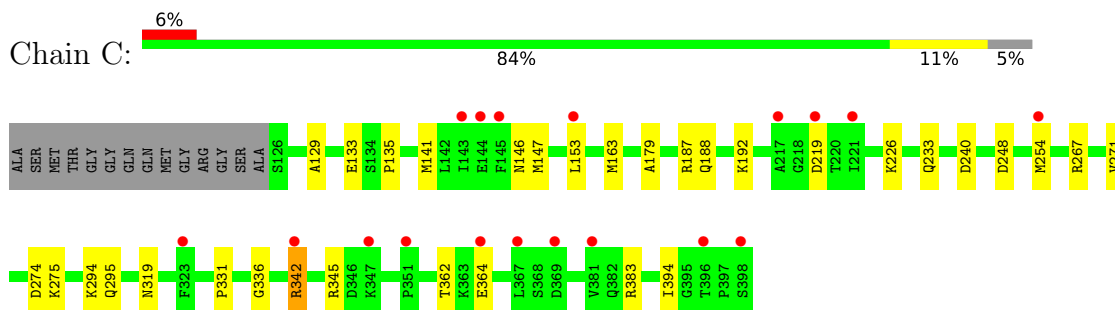
- Molecule 1: Beta-1,4-galactosyltransferase 1



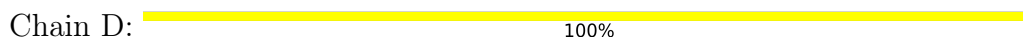
- Molecule 1: Beta-1,4-galactosyltransferase 1



- Molecule 1: Beta-1,4-galactosyltransferase 1



- Molecule 2: 2-acetamido-2-deoxy-beta-D-glucopyranose-(1-3)-[2-acetamido-2-deoxy-beta-D-glucopyranose-(1-6)]beta-D-galactopyranose-(1-4)-beta-D-glucopyranose




BGC1
GAL2
NAG3
NAG4

- Molecule 2: 2-acetamido-2-deoxy-beta-D-glucopyranose-(1-3)-[2-acetamido-2-deoxy-beta-D-glucopyranose-(1-6)]beta-D-galactopyranose-(1-4)-beta-D-glucopyranose

Chain E:  100%

BGC1
GAL2
NAG3
NAG4

- Molecule 2: 2-acetamido-2-deoxy-beta-D-glucopyranose-(1-3)-[2-acetamido-2-deoxy-beta-D-glucopyranose-(1-6)]beta-D-galactopyranose-(1-4)-beta-D-glucopyranose

Chain F:  75% 25%

BGC1
GAL2
NAG3
NAG4

4 Data and refinement statistics i

Property	Value	Source
Space group	C 2 2 21	Depositor
Cell constants a, b, c, α , β , γ	107.36Å 195.97Å 143.78Å 90.00° 90.00° 90.00°	Depositor
Resolution (Å)	36.82 – 1.95 36.82 – 1.95	Depositor EDS
% Data completeness (in resolution range)	93.0 (36.82-1.95) 93.0 (36.82-1.95)	Depositor EDS
R_{merge}	(Not available)	Depositor
R_{sym}	0.04	Depositor
$\langle I/\sigma(I) \rangle$ ¹	3.14 (at 1.95Å)	Xtriage
Refinement program	REFMAC 5.5.0110	Depositor
R, R_{free}	0.195 , 0.232 0.194 , 0.230	Depositor DCC
R_{free} test set	5495 reflections (4.99%)	wwPDB-VP
Wilson B-factor (Å ²)	35.2	Xtriage
Anisotropy	0.071	Xtriage
Bulk solvent k_{sol} (e/Å ³), B_{sol} (Å ²)	0.37 , 37.6	EDS
L-test for twinning ²	$\langle L \rangle = 0.52$, $\langle L^2 \rangle = 0.36$	Xtriage
Estimated twinning fraction	0.000 for 1/2*h-1/2*k,-3/2*h-1/2*k,-l 0.009 for 1/2*h+1/2*k,3/2*h-1/2*k,-l	Xtriage
F_o, F_c correlation	0.96	EDS
Total number of atoms	7755	wwPDB-VP
Average B, all atoms (Å ²)	36.0	wwPDB-VP

Xtriage's analysis on translational NCS is as follows: *The largest off-origin peak in the Patterson function is 3.50% of the height of the origin peak. No significant pseudotranslation is detected.*

¹Intensities estimated from amplitudes.

²Theoretical values of $\langle |L| \rangle$, $\langle L^2 \rangle$ for acentric reflections are 0.5, 0.333 respectively for untwinned datasets, and 0.375, 0.2 for perfectly twinned datasets.

5 Model quality [i](#)

5.1 Standard geometry [i](#)

Bond lengths and bond angles in the following residue types are not validated in this section: GOL, MN, GAL, SO4, UDP, BGC, NAG

The Z score for a bond length (or angle) is the number of standard deviations the observed value is removed from the expected value. A bond length (or angle) with $|Z| > 5$ is considered an outlier worth inspection. RMSZ is the root-mean-square of all Z scores of the bond lengths (or angles).

Mol	Chain	Bond lengths		Bond angles	
		RMSZ	# Z >5	RMSZ	# Z >5
1	A	1.16	2/2304 (0.1%)	1.16	5/3130 (0.2%)
1	B	1.18	5/2312 (0.2%)	1.22	9/3141 (0.3%)
1	C	0.94	1/2289 (0.0%)	1.06	3/3109 (0.1%)
All	All	1.10	8/6905 (0.1%)	1.15	17/9380 (0.2%)

Chiral center outliers are detected by calculating the chiral volume of a chiral center and verifying if the center is modelled as a planar moiety or with the opposite hand. A planarity outlier is detected by checking planarity of atoms in a peptide group, atoms in a mainchain group or atoms of a sidechain that are expected to be planar.

Mol	Chain	#Chirality outliers	#Planarity outliers
1	B	0	1

All (8) bond length outliers are listed below:

Mol	Chain	Res	Type	Atoms	Z	Observed(Å)	Ideal(Å)
1	B	225	ALA	CA-CB	6.56	1.63	1.53
1	B	177	LYS	C-O	5.24	1.30	1.23
1	C	179	ALA	CA-CB	5.23	1.60	1.53
1	B	394	ILE	CA-CB	5.20	1.61	1.54
1	B	359	ILE	N-CA	5.15	1.53	1.46
1	A	283	VAL	CA-CB	5.10	1.61	1.54
1	A	143	ILE	CA-CB	5.06	1.60	1.54
1	B	396	THR	CA-C	5.04	1.57	1.52

All (17) bond angle outliers are listed below:

Mol	Chain	Res	Type	Atoms	Z	Observed(°)	Ideal(°)
1	B	147	MET	CA-C-N	-7.83	112.77	120.52
1	B	147	MET	C-N-CA	-7.83	112.77	120.52

Continued on next page...

Continued from previous page...

Mol	Chain	Res	Type	Atoms	Z	Observed(°)	Ideal(°)
1	A	262	CYS	CA-CB-SG	-6.29	99.94	114.40
1	B	362	THR	N-CA-C	6.18	118.81	111.33
1	B	127	LEU	N-CA-C	6.07	117.35	109.64
1	B	262	CYS	CA-CB-SG	-5.95	100.72	114.40
1	B	184	PHE	N-CA-C	5.83	118.71	108.75
1	C	147	MET	CA-C-N	-5.47	114.34	120.14
1	C	147	MET	C-N-CA	-5.47	114.34	120.14
1	B	224	ARG	N-CA-C	5.36	117.54	111.11
1	B	168	ALA	CA-C-N	-5.34	114.46	119.85
1	B	168	ALA	C-N-CA	-5.34	114.46	119.85
1	C	129	ALA	N-CA-C	-5.14	103.25	110.50
1	A	199	HIS	CA-C-N	-5.11	113.66	119.28
1	A	199	HIS	C-N-CA	-5.11	113.66	119.28
1	A	330	ARG	CA-C-N	-5.04	115.38	120.21
1	A	330	ARG	C-N-CA	-5.04	115.38	120.21

There are no chirality outliers.

All (1) planarity outliers are listed below:

Mol	Chain	Res	Type	Group
1	B	126	SER	Peptide

5.2 Too-close contacts

In the following table, the Non-H and H(model) columns list the number of non-hydrogen atoms and hydrogen atoms in the chain respectively. The H(added) column lists the number of hydrogen atoms added and optimized by MolProbity. The Clashes column lists the number of clashes within the asymmetric unit, whereas Symm-Clashes lists symmetry-related clashes.

Mol	Chain	Non-H	H(model)	H(added)	Clashes	Symm-Clashes
1	A	2233	0	2181	25	0
1	B	2238	0	2183	20	0
1	C	2224	0	2170	20	0
2	D	51	0	45	0	0
2	E	51	0	45	0	0
2	F	51	0	45	1	0
3	A	25	0	11	0	0
3	B	25	0	11	0	0
3	C	25	0	11	3	0
4	A	1	0	0	0	0
4	B	1	0	0	0	0

Continued on next page...

Continued from previous page...

Mol	Chain	Non-H	H(model)	H(added)	Clashes	Symm-Clashes
4	C	1	0	0	0	0
5	A	35	0	0	1	0
5	B	55	0	0	0	0
5	C	20	0	0	1	0
6	A	6	0	8	0	0
6	B	12	0	15	0	0
6	C	6	0	8	1	0
7	A	246	0	0	4	0
7	B	269	0	0	1	0
7	C	180	0	0	6	0
All	All	7755	0	6733	64	0

The all-atom clashscore is defined as the number of clashes found per 1000 atoms (including hydrogen atoms). The all-atom clashscore for this structure is 5.

All (64) close contacts within the same asymmetric unit are listed below, sorted by their clash magnitude.

Atom-1	Atom-2	Interatomic distance (Å)	Clash overlap (Å)
1:A:306:ASN:H	1:A:306:ASN:HD22	1.26	0.80
1:A:254:MET:SD	1:A:337[A]:THR:HG22	2.23	0.78
1:A:377:GLN:HG2	7:A:722:HOH:O	1.83	0.78
1:A:334:VAL:O	1:A:337[B]:THR:HG23	1.83	0.77
1:B:334:VAL:O	1:B:337[B]:THR:HG23	1.87	0.74
1:B:337[B]:THR:HG21	1:C:135:PRO:HB2	1.68	0.74
1:B:254:MET:SD	1:B:337[A]:THR:CG2	2.78	0.71
3:C:405:UDP:H3'	3:C:405:UDP:O1A	1.93	0.69
1:B:306:ASN:H	1:B:306:ASN:HD22	1.40	0.69
1:A:254:MET:SD	1:A:337[A]:THR:CG2	2.80	0.69
1:C:141:MET:SD	7:C:611:HOH:O	2.52	0.68
1:C:240:ASP:HB2	7:C:577:HOH:O	1.92	0.68
1:C:342:ARG:NH2	7:C:607:HOH:O	2.25	0.63
1:A:295:GLN:HG2	7:A:662:HOH:O	2.00	0.62
1:A:337[B]:THR:HG21	1:B:135:PRO:HB2	1.83	0.61
1:B:131:PRO:HD2	1:B:206:GLN:HE22	1.71	0.56
1:A:306:ASN:HD22	1:A:306:ASN:N	1.93	0.55
1:A:257:HIS:HE1	7:A:665:HOH:O	1.89	0.55
1:B:254:MET:CG	1:B:337[A]:THR:HG22	2.38	0.54
1:B:306:ASN:H	1:B:306:ASN:ND2	2.03	0.54
1:A:377:GLN:CG	7:A:722:HOH:O	2.48	0.53
1:A:306:ASN:H	1:A:306:ASN:ND2	2.01	0.52
1:B:254:MET:SD	1:B:337[A]:THR:HG22	2.51	0.51

Continued on next page...

Continued from previous page...

Atom-1	Atom-2	Interatomic distance (Å)	Clash overlap (Å)
1:C:267:ARG:NH2	5:C:409:SO4:O1	2.43	0.50
6:C:411:GOL:H32	2:F:4:NAG:O4	2.12	0.49
1:C:187:ARG:NH2	3:C:405:UDP:O1A	2.41	0.49
1:C:240:ASP:CB	7:C:577:HOH:O	2.53	0.48
1:A:144:GLU:HA	5:A:407:SO4:O3	2.12	0.48
1:C:248:ASP:HB3	3:C:405:UDP:O3'	2.12	0.48
1:B:271:VAL:HG22	1:B:336:GLY:HA3	1.97	0.47
1:A:306:ASN:N	1:A:306:ASN:ND2	2.62	0.47
1:C:163:MET:CE	1:C:383:ARG:O	2.63	0.47
1:C:342:ARG:HA	1:C:342:ARG:NE	2.30	0.46
1:B:254:MET:SD	1:B:337[A]:THR:HG21	2.54	0.46
1:C:226:LYS:NZ	1:C:394:ILE:O	2.37	0.46
1:B:306:ASN:HD22	1:B:306:ASN:N	2.04	0.46
1:B:153:LEU:HD12	1:B:157:GLN:NE2	2.31	0.45
1:C:254:MET:HB3	1:C:254:MET:HE3	1.39	0.45
1:A:396:THR:HB	1:A:397:PRO:HD2	1.99	0.45
1:C:274:ASP:OD1	1:C:275:LYS:N	2.50	0.45
1:A:254:MET:HE1	1:B:136:LEU:HD22	1.99	0.44
1:C:188:GLN:O	1:C:192:LYS:HG3	2.18	0.43
1:C:319:ASN:HB2	1:C:362:THR:HG21	1.99	0.43
1:A:144:GLU:O	1:A:197:TYR:OH	2.34	0.43
1:B:127:LEU:HB3	1:B:173:VAL:HG23	2.01	0.43
1:B:198:LEU:O	1:B:199:HIS:C	2.61	0.43
1:A:224:ARG:HD3	1:A:313:GLU:OE1	2.20	0.42
1:A:314:ASP:OD1	1:A:314:ASP:N	2.52	0.42
1:B:324:ARG:HH22	1:B:367:LEU:HD21	1.84	0.42
1:B:345:ARG:NH1	7:B:524:HOH:O	2.52	0.41
1:C:271:VAL:HG22	1:C:336:GLY:HA3	2.01	0.41
1:A:268:HIS:HB3	1:A:330:ARG:HG2	2.02	0.41
1:A:303:PHE:CD1	1:A:317:ILE:HG12	2.55	0.41
1:C:146:ASN:OD1	7:C:585:HOH:O	2.22	0.41
1:C:294:LYS:NZ	7:C:510:HOH:O	2.49	0.41
1:A:271:VAL:HG22	1:A:336:GLY:HA3	2.03	0.41
1:B:167:TYR:CD2	1:B:167:TYR:C	2.99	0.41
1:B:307:TYR:CZ	1:B:358:ARG:HB3	2.56	0.41
1:C:342:ARG:HA	1:C:342:ARG:HE	1.86	0.41
1:A:330:ARG:HH11	1:A:330:ARG:HD2	1.70	0.41
1:A:167:TYR:HB3	1:A:209:TYR:CE2	2.56	0.40
1:C:271:VAL:HG11	1:C:331:PRO:HD2	2.02	0.40
1:A:300:ILE:HB	1:A:320:ARG:HB3	2.04	0.40
1:A:347:LYS:O	1:A:348:LYS:HB2	2.21	0.40

There are no symmetry-related clashes.

5.3 Torsion angles [i](#)

5.3.1 Protein backbone [i](#)

In the following table, the Percentiles column shows the percent Ramachandran outliers of the chain as a percentile score with respect to all X-ray entries followed by that with respect to entries of similar resolution.

The Analysed column shows the number of residues for which the backbone conformation was analysed, and the total number of residues.

Mol	Chain	Analysed	Favoured	Allowed	Outliers	Percentiles	
1	A	274/287 (96%)	268 (98%)	6 (2%)	0	100	100
1	B	275/287 (96%)	272 (99%)	3 (1%)	0	100	100
1	C	272/287 (95%)	263 (97%)	9 (3%)	0	100	100
All	All	821/861 (95%)	803 (98%)	18 (2%)	0	100	100

There are no Ramachandran outliers to report.

5.3.2 Protein sidechains [i](#)

In the following table, the Percentiles column shows the percent sidechain outliers of the chain as a percentile score with respect to all X-ray entries followed by that with respect to entries of similar resolution.

The Analysed column shows the number of residues for which the sidechain conformation was analysed, and the total number of residues.

Mol	Chain	Analysed	Rotameric	Outliers	Percentiles	
1	A	247/252 (98%)	240 (97%)	7 (3%)	38	30
1	B	248/252 (98%)	240 (97%)	8 (3%)	34	25
1	C	245/252 (97%)	236 (96%)	9 (4%)	30	20
All	All	740/756 (98%)	716 (97%)	24 (3%)	37	25

All (24) residues with a non-rotameric sidechain are listed below:

Mol	Chain	Res	Type
1	A	126	SER
1	A	147	MET

Continued on next page...

Continued from previous page...

Mol	Chain	Res	Type
1	A	153	LEU
1	A	306	ASN
1	A	337[A]	THR
1	A	337[B]	THR
1	A	364	GLU
1	B	127	LEU
1	B	153	LEU
1	B	306	ASN
1	B	337[A]	THR
1	B	337[B]	THR
1	B	345	ARG
1	B	385	PRO
1	B	398	SER
1	C	133	GLU
1	C	153	LEU
1	C	219	ASP
1	C	233	GLN
1	C	295[A]	GLN
1	C	295[B]	GLN
1	C	342	ARG
1	C	345	ARG
1	C	364	GLU

Sometimes sidechains can be flipped to improve hydrogen bonding and reduce clashes. All (18) such sidechains are listed below:

Mol	Chain	Res	Type
1	A	160	ASN
1	A	186	ASN
1	A	203	GLN
1	A	215	ASN
1	A	257	HIS
1	A	306	ASN
1	B	157	GLN
1	B	160	ASN
1	B	186	ASN
1	B	206	GLN
1	B	215	ASN
1	B	295	GLN
1	B	306	ASN
1	B	389	GLN
1	C	160	ASN
1	C	215	ASN

Continued on next page...

Continued from previous page...

Mol	Chain	Res	Type
1	C	233	GLN
1	C	257	HIS

5.3.3 RNA [i](#)

There are no RNA molecules in this entry.

5.4 Non-standard residues in protein, DNA, RNA chains [i](#)

There are no non-standard protein/DNA/RNA residues in this entry.

5.5 Carbohydrates [i](#)

12 monosaccharides are modelled in this entry.

In the following table, the Counts columns list the number of bonds (or angles) for which Mogul statistics could be retrieved, the number of bonds (or angles) that are observed in the model and the number of bonds (or angles) that are defined in the Chemical Component Dictionary. The Link column lists molecule types, if any, to which the group is linked. The Z score for a bond length (or angle) is the number of standard deviations the observed value is removed from the expected value. A bond length (or angle) with $|Z| > 2$ is considered an outlier worth inspection. RMSZ is the root-mean-square of all Z scores of the bond lengths (or angles).

Mol	Type	Chain	Res	Link	Bond lengths			Bond angles		
					Counts	RMSZ	# Z > 2	Counts	RMSZ	# Z > 2
2	BGC	D	1	2	12,12,12	0.86	0	17,17,17	1.17	1 (5%)
2	GAL	D	2	2	11,11,12	0.69	0	15,15,17	1.22	2 (13%)
2	NAG	D	3	2	14,14,15	0.55	0	17,19,21	1.83	4 (23%)
2	NAG	D	4	2	14,14,15	0.61	0	17,19,21	1.20	4 (23%)
2	BGC	E	1	2	12,12,12	0.61	0	17,17,17	1.35	2 (11%)
2	GAL	E	2	2	11,11,12	0.68	0	15,15,17	1.14	1 (6%)
2	NAG	E	3	2	14,14,15	0.86	0	17,19,21	1.67	5 (29%)
2	NAG	E	4	2	14,14,15	0.65	0	17,19,21	0.98	1 (5%)
2	BGC	F	1	2	12,12,12	0.66	0	17,17,17	1.57	4 (23%)
2	GAL	F	2	2	11,11,12	0.60	0	15,15,17	1.22	1 (6%)
2	NAG	F	3	2	14,14,15	0.65	0	17,19,21	1.63	4 (23%)
2	NAG	F	4	2	14,14,15	0.63	0	17,19,21	0.98	1 (5%)

In the following table, the Chirals column lists the number of chiral outliers, the number of chiral

centers analysed, the number of these observed in the model and the number defined in the Chemical Component Dictionary. Similar counts are reported in the Torsion and Rings columns. '2' means no outliers of that kind were identified.

Mol	Type	Chain	Res	Link	Chirals	Torsions	Rings
2	BGC	D	1	2	-	0/2/22/22	0/1/1/1
2	GAL	D	2	2	-	0/2/19/22	0/1/1/1
2	NAG	D	3	2	-	0/6/23/26	0/1/1/1
2	NAG	D	4	2	-	0/6/23/26	0/1/1/1
2	BGC	E	1	2	-	0/2/22/22	0/1/1/1
2	GAL	E	2	2	-	0/2/19/22	0/1/1/1
2	NAG	E	3	2	-	0/6/23/26	0/1/1/1
2	NAG	E	4	2	-	1/6/23/26	0/1/1/1
2	BGC	F	1	2	-	1/2/22/22	0/1/1/1
2	GAL	F	2	2	-	0/2/19/22	0/1/1/1
2	NAG	F	3	2	-	0/6/23/26	0/1/1/1
2	NAG	F	4	2	-	0/6/23/26	0/1/1/1

There are no bond length outliers.

All (30) bond angle outliers are listed below:

Mol	Chain	Res	Type	Atoms	Z	Observed(°)	Ideal(°)
2	D	3	NAG	C2-N2-C7	4.41	128.81	122.90
2	E	3	NAG	C2-N2-C7	3.30	127.32	122.90
2	F	3	NAG	C6-C5-C4	-3.16	105.27	113.02
2	E	1	BGC	C1-O5-C5	-3.13	107.59	113.65
2	D	2	GAL	C1-C2-C3	3.10	114.15	109.64
2	E	3	NAG	C6-C5-C4	-3.07	105.47	113.02
2	D	3	NAG	O7-C7-N2	3.04	127.35	121.98
2	D	3	NAG	C6-C5-C4	-2.79	106.17	113.02
2	F	1	BGC	C1-C2-C3	-2.79	104.67	110.36
2	F	3	NAG	O5-C5-C6	2.72	112.96	107.66
2	F	2	GAL	C2-C3-C4	-2.69	106.13	110.86
2	D	3	NAG	C8-C7-N2	-2.66	111.71	116.12
2	E	3	NAG	O7-C7-N2	2.59	126.56	121.98
2	F	3	NAG	O5-C1-C2	2.53	115.21	111.29
2	E	3	NAG	C1-O5-C5	2.50	115.54	112.19
2	F	1	BGC	C1-O5-C5	-2.48	108.84	113.65
2	E	4	NAG	C2-N2-C7	-2.48	119.58	122.90
2	F	3	NAG	C4-C3-C2	-2.36	107.56	111.02
2	E	3	NAG	O3-C3-C4	-2.33	104.89	110.38
2	F	1	BGC	O5-C1-C2	-2.32	106.22	110.30
2	D	2	GAL	C2-C3-C4	-2.32	106.79	110.86
2	F	4	NAG	C2-N2-C7	-2.30	119.82	122.90

Continued on next page...

Continued from previous page...

Mol	Chain	Res	Type	Atoms	Z	Observed(°)	Ideal(°)
2	D	4	NAG	C1-C2-N2	2.26	113.99	110.43
2	D	1	BGC	O5-C5-C6	-2.20	100.98	106.44
2	E	1	BGC	O4-C4-C3	-2.19	105.20	110.38
2	D	4	NAG	O5-C5-C4	-2.18	105.53	110.83
2	E	2	GAL	O5-C1-C2	-2.05	105.89	110.79
2	D	4	NAG	C3-C4-C5	-2.03	106.56	110.23
2	F	1	BGC	O3-C3-C2	2.02	115.14	110.38
2	D	4	NAG	O3-C3-C2	-2.00	105.24	109.40

There are no chirality outliers.

All (2) torsion outliers are listed below:

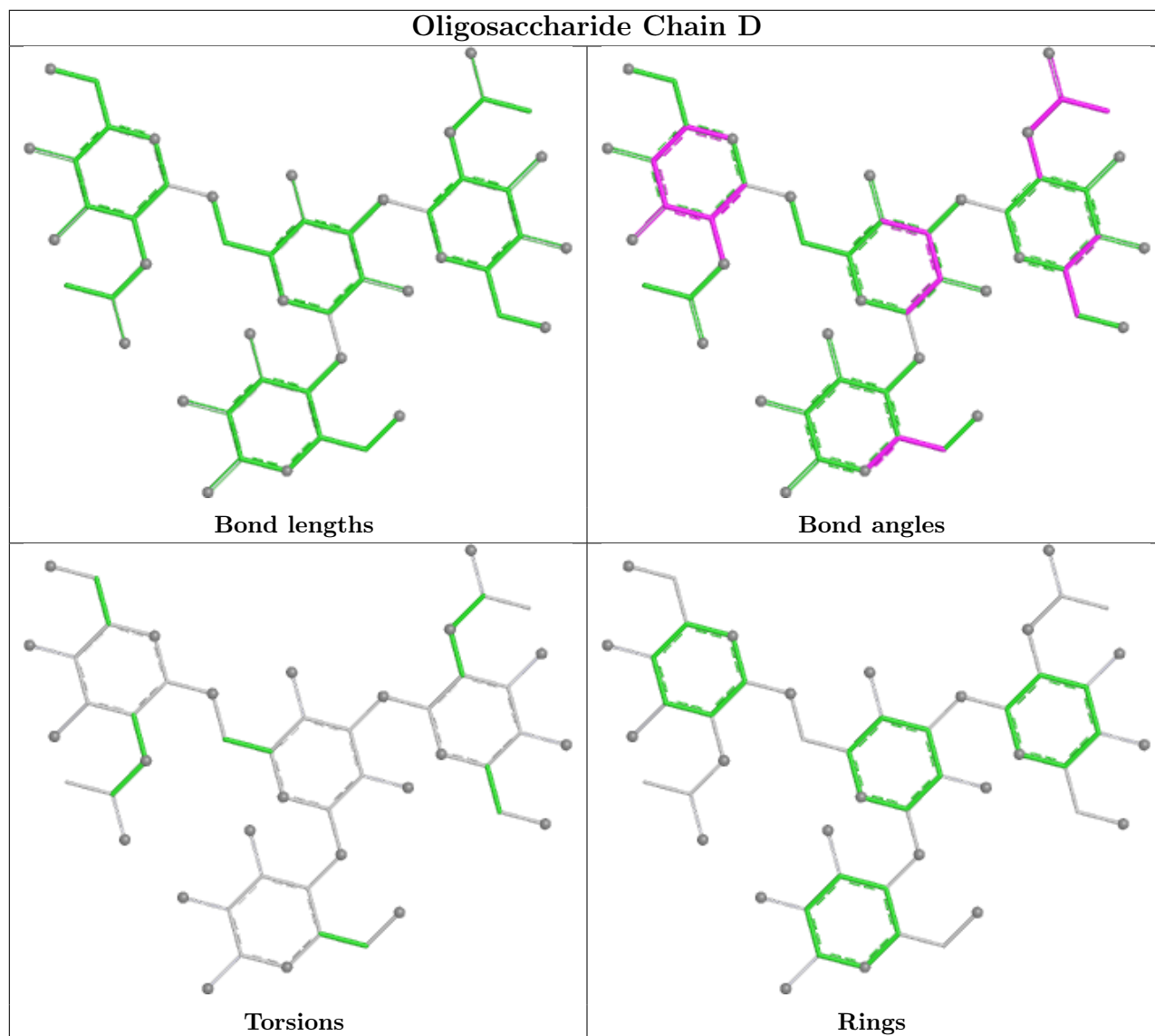
Mol	Chain	Res	Type	Atoms
2	F	1	BGC	O5-C5-C6-O6
2	E	4	NAG	C1-C2-N2-C7

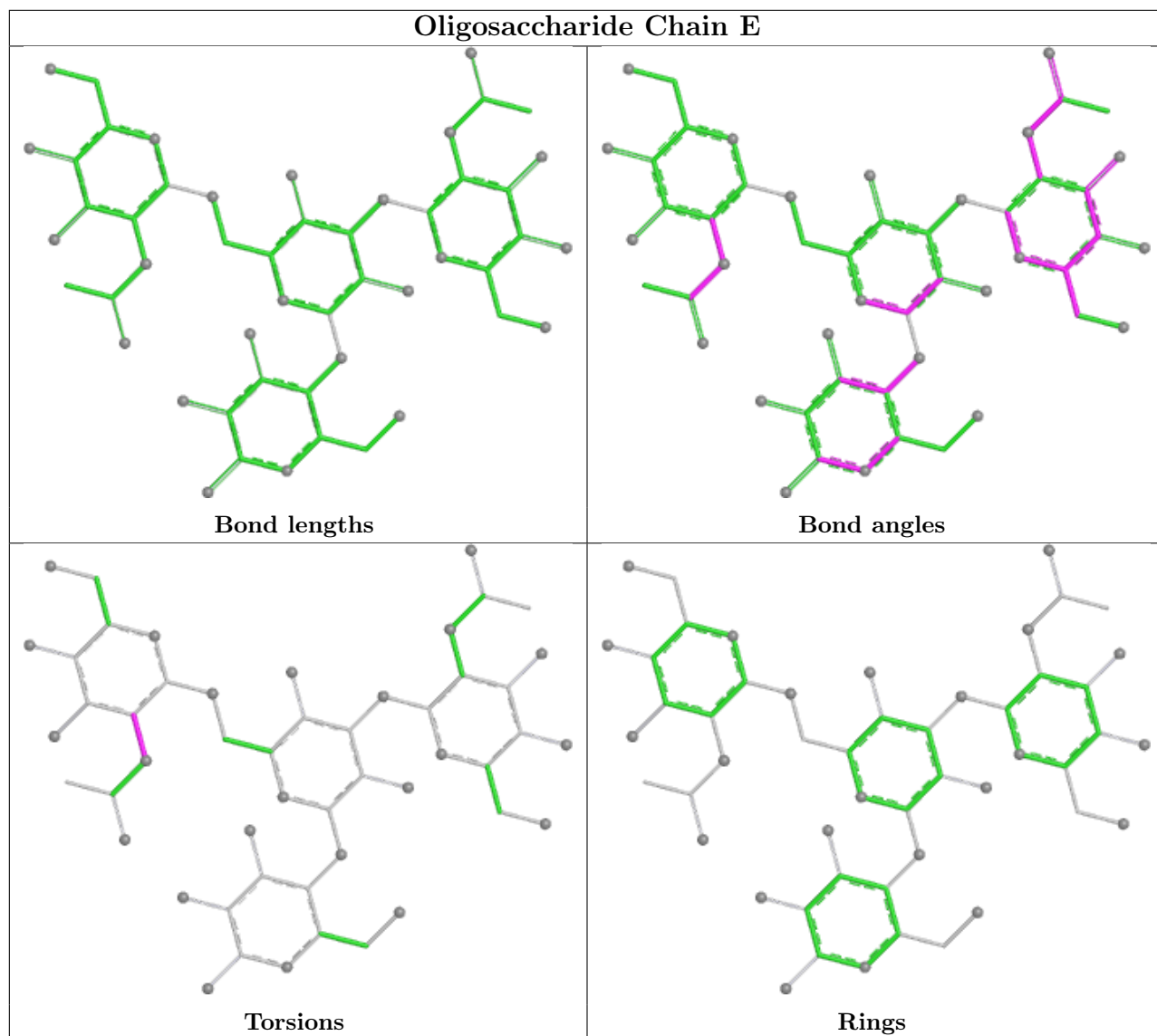
There are no ring outliers.

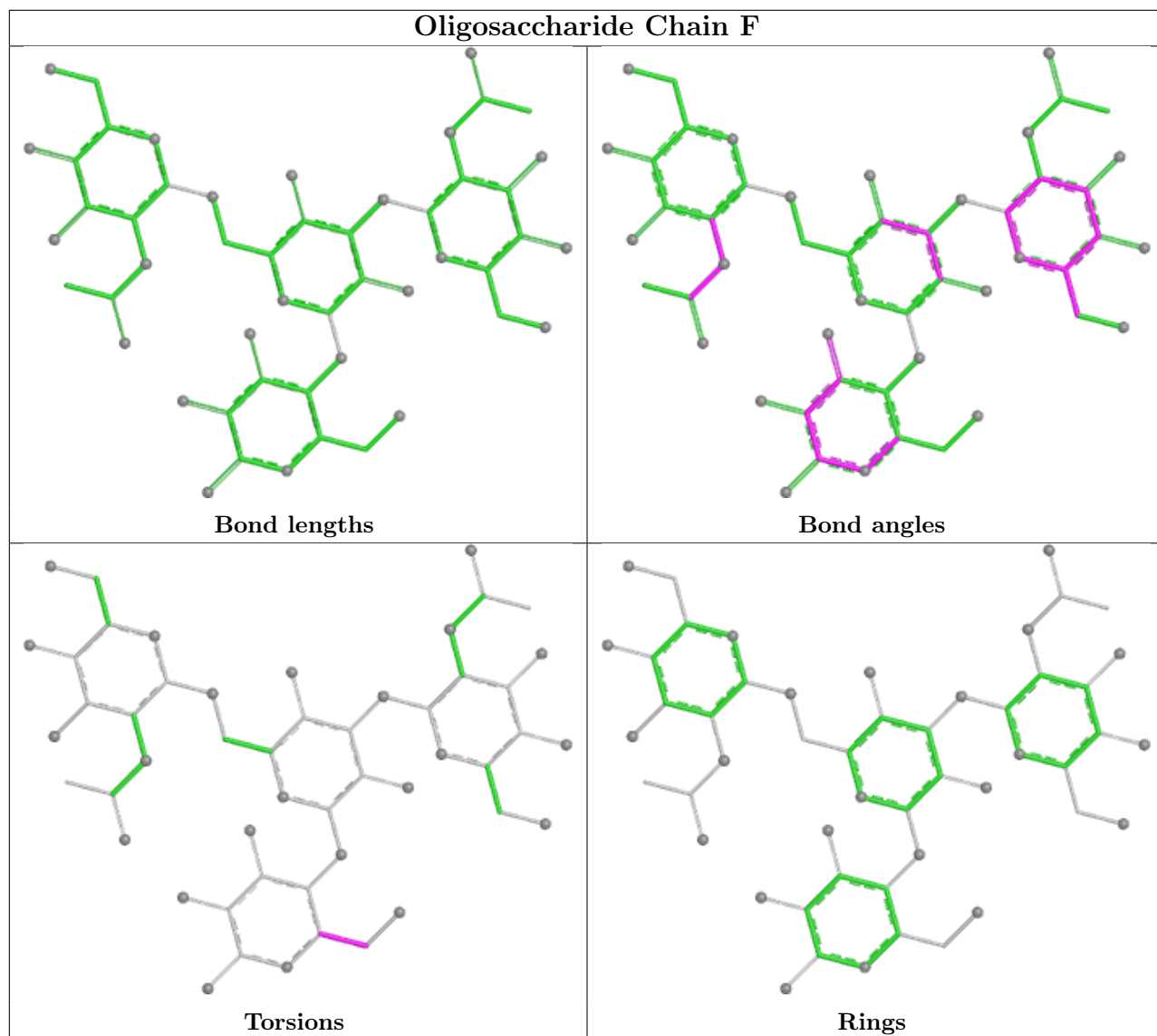
1 monomer is involved in 1 short contact:

Mol	Chain	Res	Type	Clashes	Symm-Clashes
2	F	4	NAG	1	0

The following is a two-dimensional graphical depiction of Mogul quality analysis of bond lengths, bond angles, torsion angles, and ring geometry for oligosaccharide.







5.6 Ligand geometry [i](#)

Of 32 ligands modelled in this entry, 3 are monoatomic - leaving 29 for Mogul analysis.

In the following table, the Counts columns list the number of bonds (or angles) for which Mogul statistics could be retrieved, the number of bonds (or angles) that are observed in the model and the number of bonds (or angles) that are defined in the Chemical Component Dictionary. The Link column lists molecule types, if any, to which the group is linked. The Z score for a bond length (or angle) is the number of standard deviations the observed value is removed from the expected value. A bond length (or angle) with $|Z| > 2$ is considered an outlier worth inspection. RMSZ is the root-mean-square of all Z scores of the bond lengths (or angles).

Mol	Type	Chain	Res	Link	Bond lengths			Bond angles		
					Counts	RMSZ	$\# Z > 2$	Counts	RMSZ	$\# Z > 2$
5	SO4	A	411	-	4,4,4	0.37	0	6,6,6	0.33	0
5	SO4	B	415	-	4,4,4	0.23	0	6,6,6	0.40	0

Mol	Type	Chain	Res	Link	Bond lengths			Bond angles		
					Counts	RMSZ	# Z > 2	Counts	RMSZ	# Z > 2
5	SO4	C	408	-	4,4,4	0.27	0	6,6,6	0.36	0
5	SO4	B	407	-	4,4,4	0.24	0	6,6,6	0.19	0
5	SO4	C	407	-	4,4,4	0.19	0	6,6,6	0.51	0
6	GOL	B	419	-	5,5,5	0.48	0	5,5,5	1.04	0
5	SO4	B	411	-	4,4,4	0.31	0	6,6,6	0.50	0
3	UDP	C	405	4	25,26,26	1.08	3 (12%)	38,40,40	1.80	8 (21%)
3	UDP	A	405	4	25,26,26	1.57	2 (8%)	38,40,40	1.55	7 (18%)
5	SO4	B	417	-	4,4,4	0.24	0	6,6,6	0.22	0
5	SO4	C	409	-	4,4,4	0.21	0	6,6,6	0.46	0
5	SO4	B	408	-	4,4,4	0.27	0	6,6,6	0.67	0
5	SO4	A	410	-	4,4,4	0.36	0	6,6,6	0.89	0
5	SO4	B	410	-	4,4,4	0.36	0	6,6,6	0.58	0
5	SO4	A	409	-	4,4,4	0.35	0	6,6,6	0.49	0
5	SO4	A	412	-	4,4,4	0.30	0	6,6,6	0.41	0
5	SO4	A	413	-	4,4,4	0.20	0	6,6,6	0.39	0
6	GOL	A	414	-	5,5,5	0.51	0	5,5,5	1.23	0
6	GOL	B	418	-	5,5,5	0.25	0	5,5,5	2.14	2 (40%)
6	GOL	C	411	-	5,5,5	0.34	0	5,5,5	1.30	1 (20%)
5	SO4	C	410	-	4,4,4	0.23	0	6,6,6	0.15	0
3	UDP	B	405	4	25,26,26	1.41	3 (12%)	38,40,40	2.21	7 (18%)
5	SO4	B	414	-	4,4,4	0.23	0	6,6,6	0.56	0
5	SO4	B	409	-	4,4,4	0.54	0	6,6,6	0.69	0
5	SO4	A	408	-	4,4,4	0.42	0	6,6,6	0.53	0
5	SO4	B	413	-	4,4,4	0.40	0	6,6,6	0.87	0
5	SO4	B	416	-	4,4,4	0.28	0	6,6,6	0.22	0
5	SO4	B	412	-	4,4,4	0.31	0	6,6,6	0.54	0
5	SO4	A	407	-	4,4,4	0.32	0	6,6,6	0.63	0

In the following table, the Chirals column lists the number of chiral outliers, the number of chiral centers analysed, the number of these observed in the model and the number defined in the Chemical Component Dictionary. Similar counts are reported in the Torsion and Rings columns. '-' means no outliers of that kind were identified.

Mol	Type	Chain	Res	Link	Chirals	Torsions	Rings
6	GOL	A	414	-	-	1/4/4/4	-
6	GOL	B	418	-	-	2/4/4/4	-
6	GOL	C	411	-	-	3/4/4/4	-
6	GOL	B	419	-	-	0/4/4/4	-
3	UDP	B	405	4	-	4/16/32/32	0/2/2/2
3	UDP	C	405	4	-	4/16/32/32	0/2/2/2

Continued on next page...

Continued from previous page...

Mol	Type	Chain	Res	Link	Chirals	Torsions	Rings
3	UDP	A	405	4	-	5/16/32/32	0/2/2/2

All (8) bond length outliers are listed below:

Mol	Chain	Res	Type	Atoms	Z	Observed(Å)	Ideal(Å)
3	A	405	UDP	PA-O3A	5.12	1.65	1.59
3	B	405	UDP	PA-O3A	4.84	1.64	1.59
3	A	405	UDP	C6-C5	3.44	1.43	1.35
3	C	405	UDP	PA-O3A	3.13	1.62	1.59
3	B	405	UDP	C6-C5	2.90	1.41	1.35
3	C	405	UDP	C5-C4	-2.21	1.38	1.43
3	C	405	UDP	C6-C5	2.11	1.40	1.35
3	B	405	UDP	PA-O5'	2.06	1.67	1.59

All (25) bond angle outliers are listed below:

Mol	Chain	Res	Type	Atoms	Z	Observed(°)	Ideal(°)
3	B	405	UDP	C4-N3-C2	-7.75	116.99	126.61
3	B	405	UDP	C5-C4-N3	6.04	123.26	114.80
3	C	405	UDP	C4-N3-C2	-5.59	119.67	126.61
3	B	405	UDP	N3-C2-N1	5.03	121.43	114.89
3	A	405	UDP	C5-C4-N3	4.24	120.74	114.80
3	C	405	UDP	N3-C2-N1	4.16	120.31	114.89
3	C	405	UDP	C5-C4-N3	3.76	120.07	114.80
3	A	405	UDP	C4-N3-C2	-3.66	122.07	126.61
6	B	418	GOL	O2-C2-C1	3.61	124.14	109.18
3	B	405	UDP	O4-C4-N3	-3.24	114.58	119.27
3	C	405	UDP	C6-N1-C2	-3.07	117.26	121.00
3	A	405	UDP	O5'-C5'-C4'	3.00	119.19	108.99
6	B	418	GOL	O2-C2-C3	2.89	121.14	109.18
3	B	405	UDP	O3B-PB-O3A	2.84	114.17	104.64
3	C	405	UDP	O4-C4-C5	-2.84	120.26	125.16
3	A	405	UDP	C6-C5-C4	-2.80	115.96	119.53
6	C	411	GOL	C3-C2-C1	-2.72	101.80	111.80
3	C	405	UDP	O4'-C1'-N1	2.64	114.33	108.36
3	A	405	UDP	N3-C2-N1	2.49	118.13	114.89
3	A	405	UDP	O2-C2-N1	-2.28	119.83	122.80
3	B	405	UDP	O2-C2-N1	-2.13	120.03	122.80
3	C	405	UDP	O2B-PB-O3A	2.11	111.73	104.64
3	A	405	UDP	O2B-PB-O3A	2.11	111.70	104.64
3	B	405	UDP	O4'-C1'-N1	2.09	113.10	108.36
3	C	405	UDP	C1'-N1-C2	2.01	121.21	117.59

There are no chirality outliers.

All (19) torsion outliers are listed below:

Mol	Chain	Res	Type	Atoms
3	A	405	UDP	C5'-O5'-PA-O2A
3	A	405	UDP	C5'-O5'-PA-O3A
3	A	405	UDP	PA-O3A-PB-O3B
3	B	405	UDP	C5'-O5'-PA-O2A
3	B	405	UDP	C5'-O5'-PA-O3A
6	B	418	GOL	O1-C1-C2-C3
6	B	418	GOL	O2-C2-C3-O3
6	A	414	GOL	O1-C1-C2-C3
6	C	411	GOL	O1-C1-C2-C3
6	C	411	GOL	C1-C2-C3-O3
6	C	411	GOL	O1-C1-C2-O2
3	C	405	UDP	PA-O3A-PB-O1B
3	C	405	UDP	PA-O3A-PB-O2B
3	B	405	UDP	C4'-C5'-O5'-PA
3	A	405	UDP	C4'-C5'-O5'-PA
3	C	405	UDP	C4'-C5'-O5'-PA
3	A	405	UDP	PA-O3A-PB-O2B
3	B	405	UDP	C3'-C4'-C5'-O5'
3	C	405	UDP	C2'-C1'-N1-C2

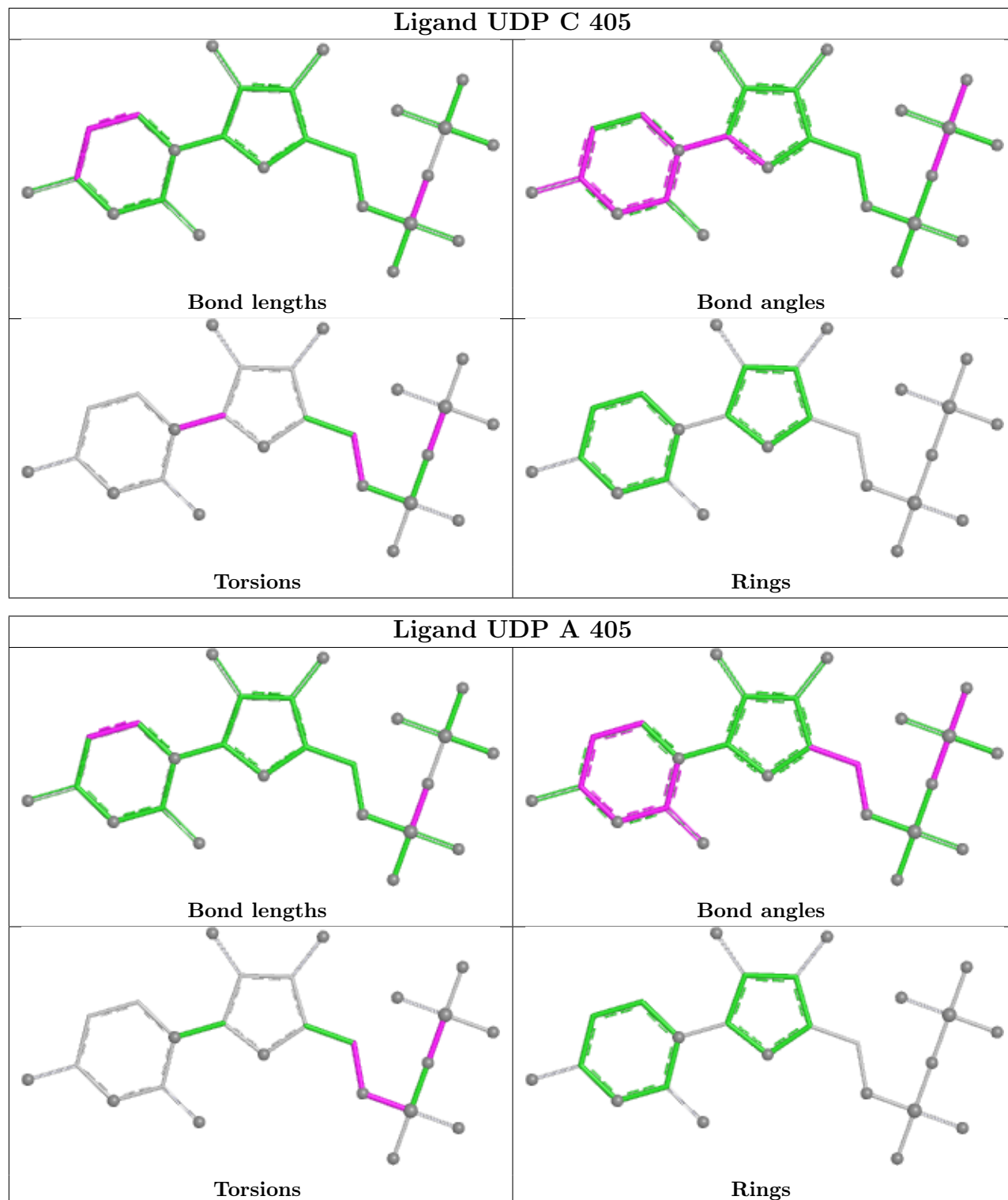
There are no ring outliers.

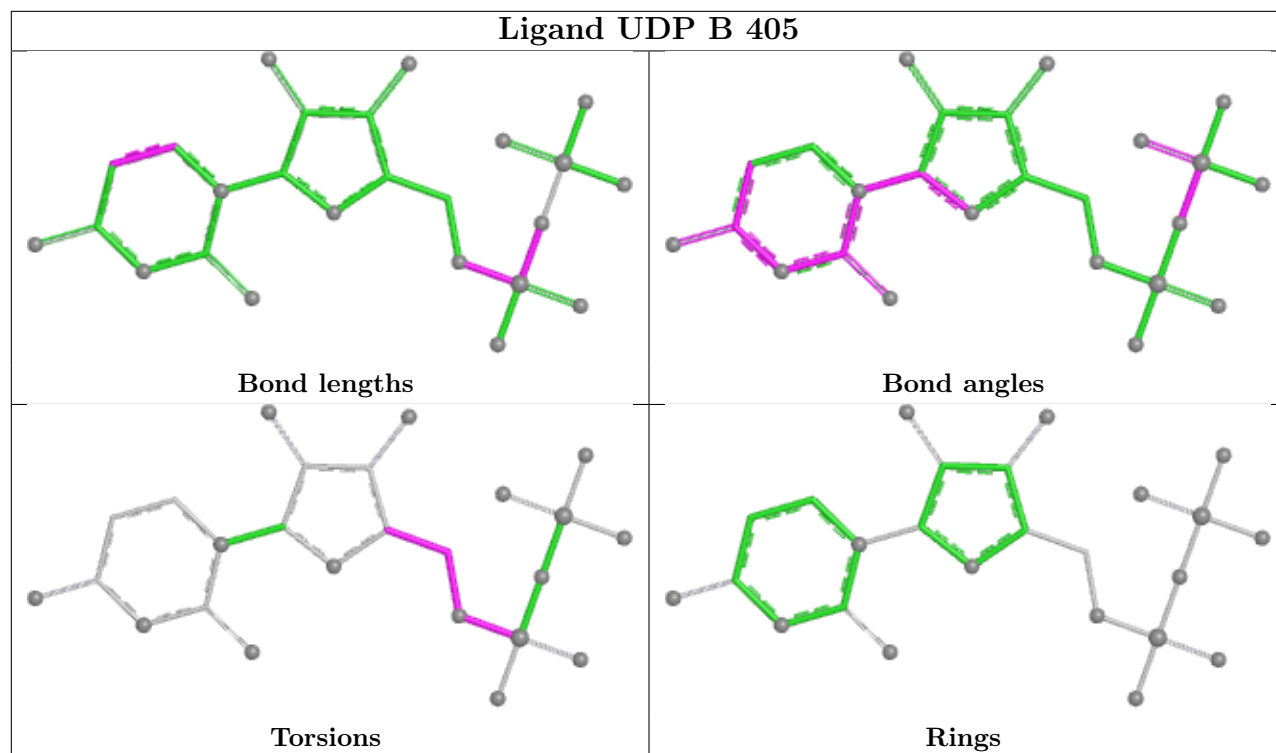
4 monomers are involved in 6 short contacts:

Mol	Chain	Res	Type	Clashes	Symm-Clashes
3	C	405	UDP	3	0
5	C	409	SO4	1	0
6	C	411	GOL	1	0
5	A	407	SO4	1	0

The following is a two-dimensional graphical depiction of Mogul quality analysis of bond lengths, bond angles, torsion angles, and ring geometry for all instances of the Ligand of Interest. In addition, ligands with molecular weight > 250 and outliers as shown on the validation Tables will also be included. For torsion angles, if less than 5% of the Mogul distribution of torsion angles is within 10 degrees of the torsion angle in question, then that torsion angle is considered an outlier. Any bond that is central to one or more torsion angles identified as an outlier by Mogul will be highlighted in the graph. For rings, the root-mean-square deviation (RMSD) between the ring in question and similar rings identified by Mogul is calculated over all ring torsion angles. If the average RMSD is greater than 60 degrees and the minimal RMSD between the ring in question and any Mogul-identified rings is also greater than 60 degrees, then that ring is considered an outlier. The outliers are highlighted in purple. The color gray indicates Mogul did not find sufficient

equivalents in the CSD to analyse the geometry.





5.7 Other polymers [i](#)

There are no such residues in this entry.

5.8 Polymer linkage issues [i](#)

There are no chain breaks in this entry.

6 Fit of model and data

6.1 Protein, DNA and RNA chains

In the following table, the column labelled ‘#RSRZ > 2’ contains the number (and percentage) of RSRZ outliers, followed by percent RSRZ outliers for the chain as percentile scores relative to all X-ray entries and entries of similar resolution. The OWAB column contains the minimum, median, 95th percentile and maximum values of the occupancy-weighted average B-factor per residue. The column labelled ‘Q < 0.9’ lists the number of (and percentage) of residues with an average occupancy less than 0.9.

Mol	Chain	Analysed	<RSRZ>	#RSRZ>2	OWAB(Å ²)	Q<0.9
1	A	273/287 (95%)	-0.03	3 (1%) 78 83	17, 31, 49, 70	3 (1%)
1	B	273/287 (95%)	-0.27	3 (1%) 78 83	16, 27, 42, 61	4 (1%)
1	C	273/287 (95%)	0.58	18 (6%) 24 28	23, 39, 58, 72	1 (0%)
All	All	819/861 (95%)	0.10	24 (2%) 53 60	16, 33, 54, 72	8 (0%)

All (24) RSRZ outliers are listed below:

Mol	Chain	Res	Type	RSRZ
1	C	347	LYS	3.8
1	C	153	LEU	2.9
1	C	323	PHE	2.8
1	C	398	SER	2.8
1	C	219	ASP	2.8
1	C	342	ARG	2.7
1	C	367	LEU	2.7
1	B	398	SER	2.6
1	C	144	GLU	2.5
1	A	142	LEU	2.5
1	C	364	GLU	2.5
1	B	323	PHE	2.4
1	C	351	PRO	2.4
1	C	396	THR	2.3
1	C	143	ILE	2.2
1	C	381	VAL	2.2
1	A	127	LEU	2.2
1	C	221	ILE	2.1
1	A	345	ARG	2.1
1	C	217	ALA	2.1
1	C	145	PHE	2.1
1	C	369	ASP	2.1
1	B	345	ARG	2.1

Continued on next page...

Continued from previous page...

Mol	Chain	Res	Type	RSRZ
1	C	254	MET	2.0

6.2 Non-standard residues in protein, DNA, RNA chains [i](#)

There are no non-standard protein/DNA/RNA residues in this entry.

6.3 Carbohydrates [i](#)

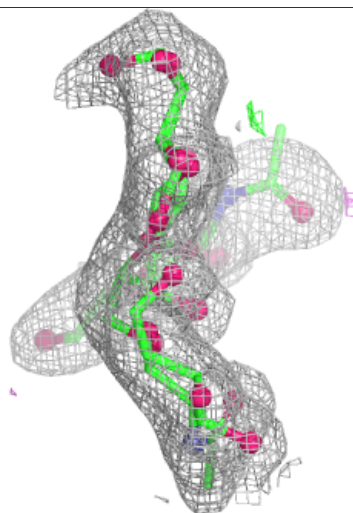
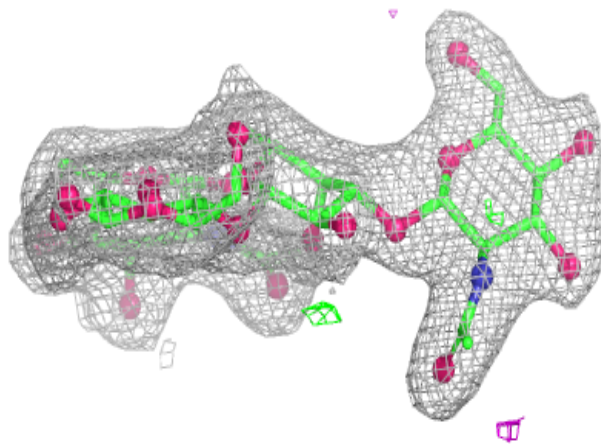
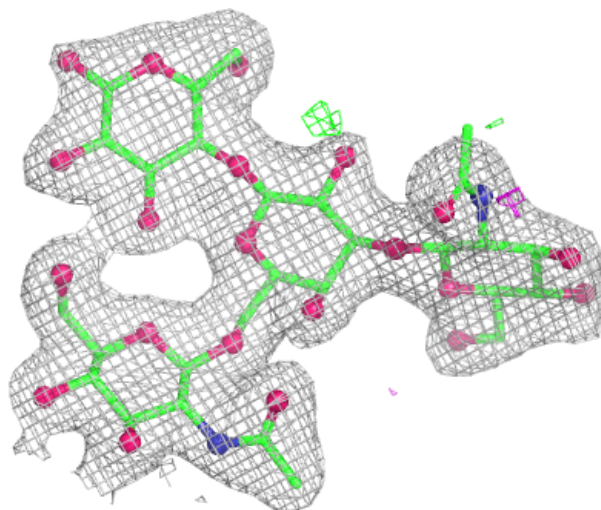
In the following table, the Atoms column lists the number of modelled atoms in the group and the number defined in the chemical component dictionary. The B-factors column lists the minimum, median, 95th percentile and maximum values of B factors of atoms in the group. The column labelled 'Q< 0.9' lists the number of atoms with occupancy less than 0.9.

Mol	Type	Chain	Res	Atoms	RSCC	RSR	B-factors(Å ²)	Q<0.9
2	NAG	F	3	14/15	0.84	0.14	59,66,68,71	0
2	BGC	F	1	12/12	0.90	0.11	55,59,65,66	0
2	BGC	E	1	12/12	0.90	0.12	34,44,54,55	0
2	NAG	E	3	14/15	0.91	0.11	40,48,50,58	0
2	NAG	D	3	14/15	0.92	0.10	51,57,60,62	0
2	GAL	F	2	11/12	0.93	0.09	50,55,57,58	0
2	BGC	D	1	12/12	0.93	0.09	36,41,52,56	0
2	NAG	F	4	14/15	0.94	0.08	43,45,46,47	0
2	GAL	D	2	11/12	0.95	0.08	32,38,49,50	0
2	GAL	E	2	11/12	0.97	0.06	31,35,40,43	0
2	NAG	D	4	14/15	0.98	0.05	26,30,32,32	0
2	NAG	E	4	14/15	0.98	0.05	23,26,29,29	0

The following is a graphical depiction of the model fit to experimental electron density for oligosaccharide. Each fit is shown from different orientation to approximate a three-dimensional view.

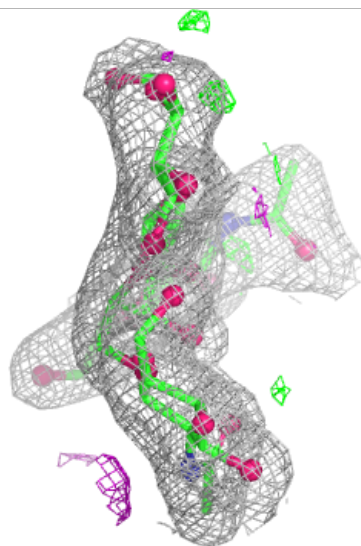
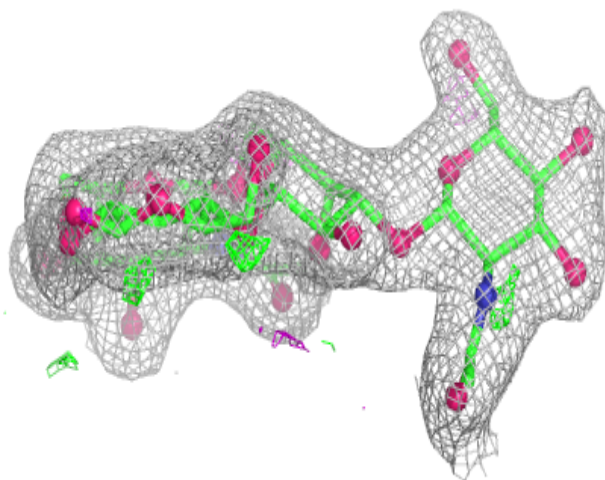
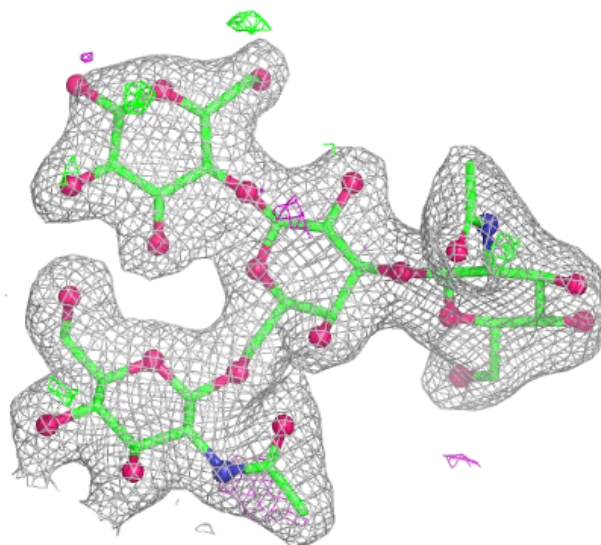
Electron density around Chain D:

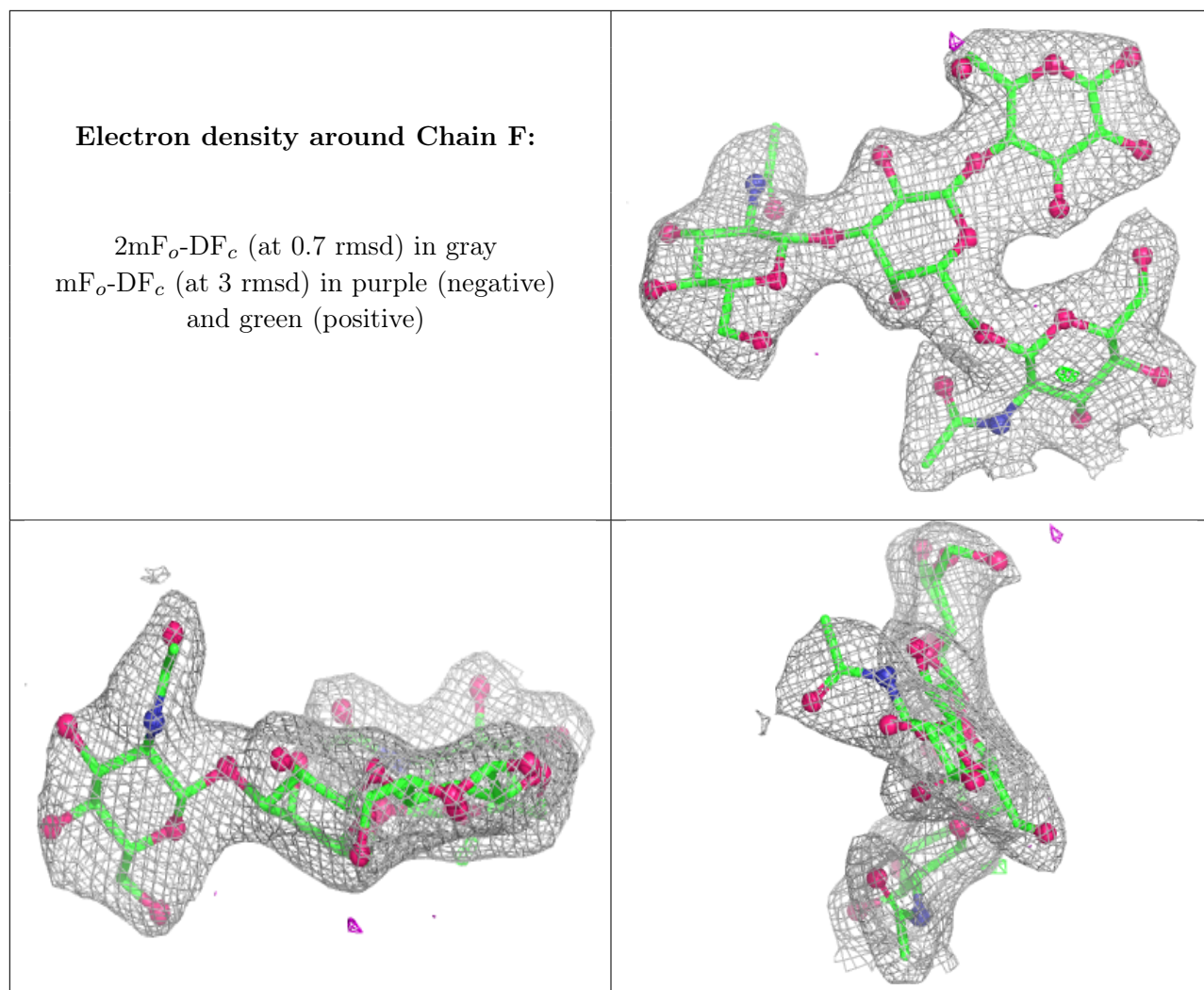
$2mF_o-DF_c$ (at 0.7 rmsd) in gray
 mF_o-DF_c (at 3 rmsd) in purple (negative)
and green (positive)



Electron density around Chain E:

$2mF_o-DF_c$ (at 0.7 rmsd) in gray
 mF_o-DF_c (at 3 rmsd) in purple (negative)
and green (positive)





6.4 Ligands i

In the following table, the Atoms column lists the number of modelled atoms in the group and the number defined in the chemical component dictionary. The B-factors column lists the minimum, median, 95th percentile and maximum values of B factors of atoms in the group. The column labelled 'Q< 0.9' lists the number of atoms with occupancy less than 0.9.

Mol	Type	Chain	Res	Atoms	RSCC	RSR	B-factors(Å ²)	Q<0.9
5	SO4	A	412	5/5	0.49	0.18	107,107,108,109	0
5	SO4	B	416	5/5	0.66	0.19	121,122,123,123	0
5	SO4	B	409	5/5	0.67	0.18	66,74,74,77	0
5	SO4	B	415	5/5	0.71	0.17	94,94,96,97	0
5	SO4	A	409	5/5	0.72	0.14	73,75,78,80	0
5	SO4	C	409	5/5	0.74	0.15	91,92,92,94	0
5	SO4	C	410	5/5	0.74	0.11	100,101,102,103	0
5	SO4	A	411	5/5	0.75	0.23	83,84,87,89	0
5	SO4	A	410	5/5	0.76	0.19	76,85,86,87	0

Continued on next page...

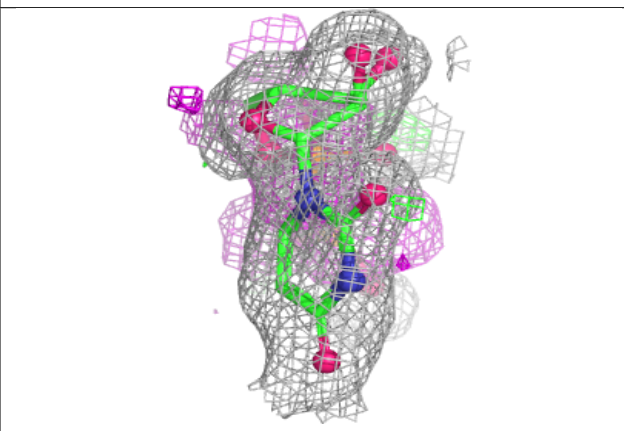
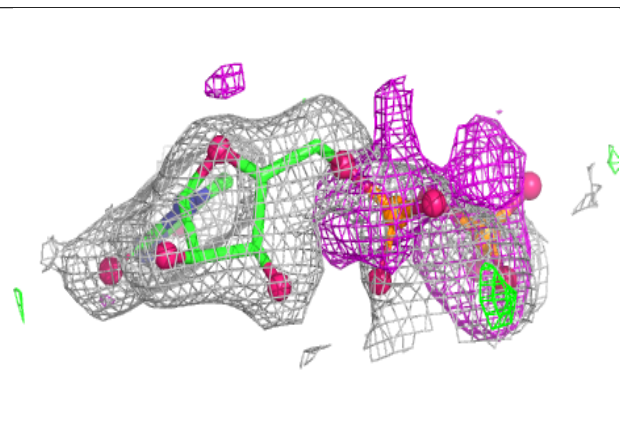
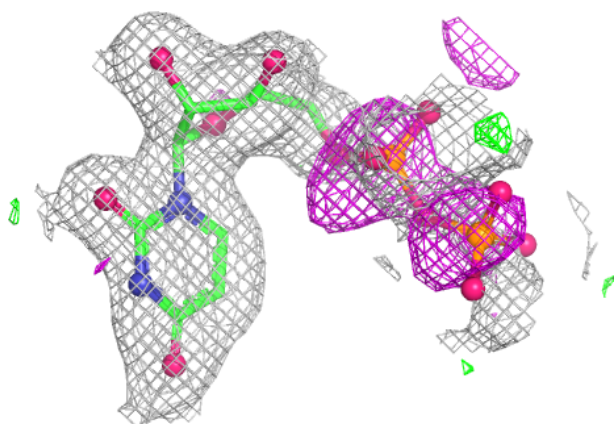
Continued from previous page...

Mol	Type	Chain	Res	Atoms	RSCC	RSR	B-factors(\AA^2)	Q<0.9
5	SO4	B	410	5/5	0.76	0.26	101,105,108,108	0
5	SO4	B	411	5/5	0.79	0.13	75,76,77,79	0
5	SO4	B	414	5/5	0.79	0.21	101,105,107,108	0
5	SO4	B	412	5/5	0.80	0.21	105,105,107,107	0
3	UDP	A	405	25/25	0.84	0.16	30,41,109,109	0
5	SO4	C	408	5/5	0.84	0.12	80,81,84,84	0
3	UDP	C	405	25/25	0.84	0.14	41,49,117,118	0
5	SO4	A	413	5/5	0.84	0.25	126,127,128,128	0
5	SO4	B	417	5/5	0.86	0.13	122,122,123,123	0
6	GOL	A	414	6/6	0.86	0.14	32,41,51,59	0
5	SO4	B	407	5/5	0.87	0.10	82,82,84,85	0
6	GOL	C	411	6/6	0.87	0.15	45,55,56,61	0
5	SO4	B	413	5/5	0.88	0.12	45,53,59,60	0
3	UDP	B	405	25/25	0.90	0.13	23,29,98,101	0
5	SO4	A	408	5/5	0.91	0.11	58,64,66,69	0
5	SO4	A	407	5/5	0.92	0.10	72,73,75,76	0
5	SO4	B	408	5/5	0.92	0.09	62,65,65,65	0
6	GOL	B	418	6/6	0.93	0.12	28,39,49,53	0
5	SO4	C	407	5/5	0.94	0.08	47,50,52,58	0
4	MN	C	406	1/1	0.96	0.12	64,64,64,64	0
6	GOL	B	419	6/6	0.97	0.08	26,30,35,37	0
4	MN	A	406	1/1	0.97	0.08	59,59,59,59	0
4	MN	B	406	1/1	0.99	0.10	45,45,45,45	0

The following is a graphical depiction of the model fit to experimental electron density of all instances of the Ligand of Interest. In addition, ligands with molecular weight > 250 and outliers as shown on the geometry validation Tables will also be included. Each fit is shown from different orientation to approximate a three-dimensional view.

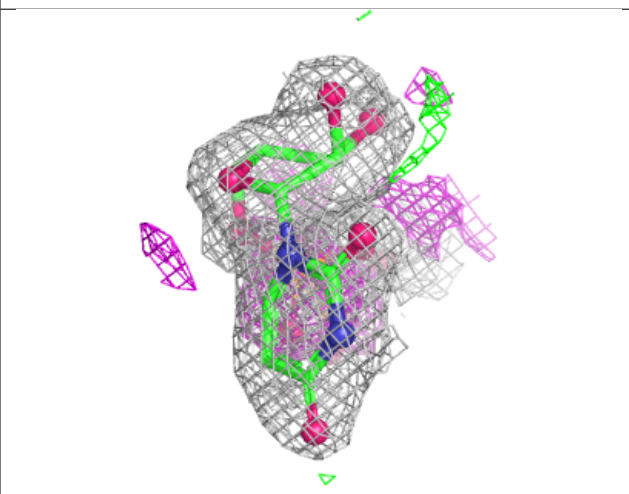
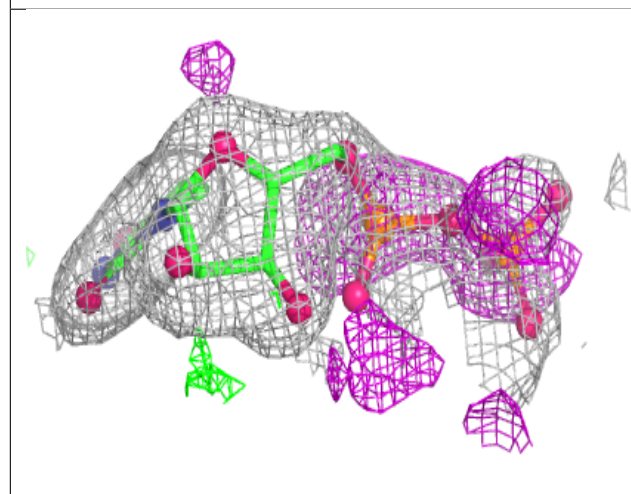
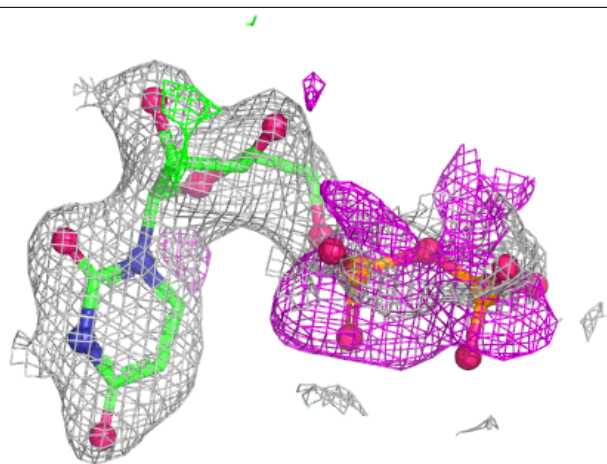
Electron density around UDP A 405:

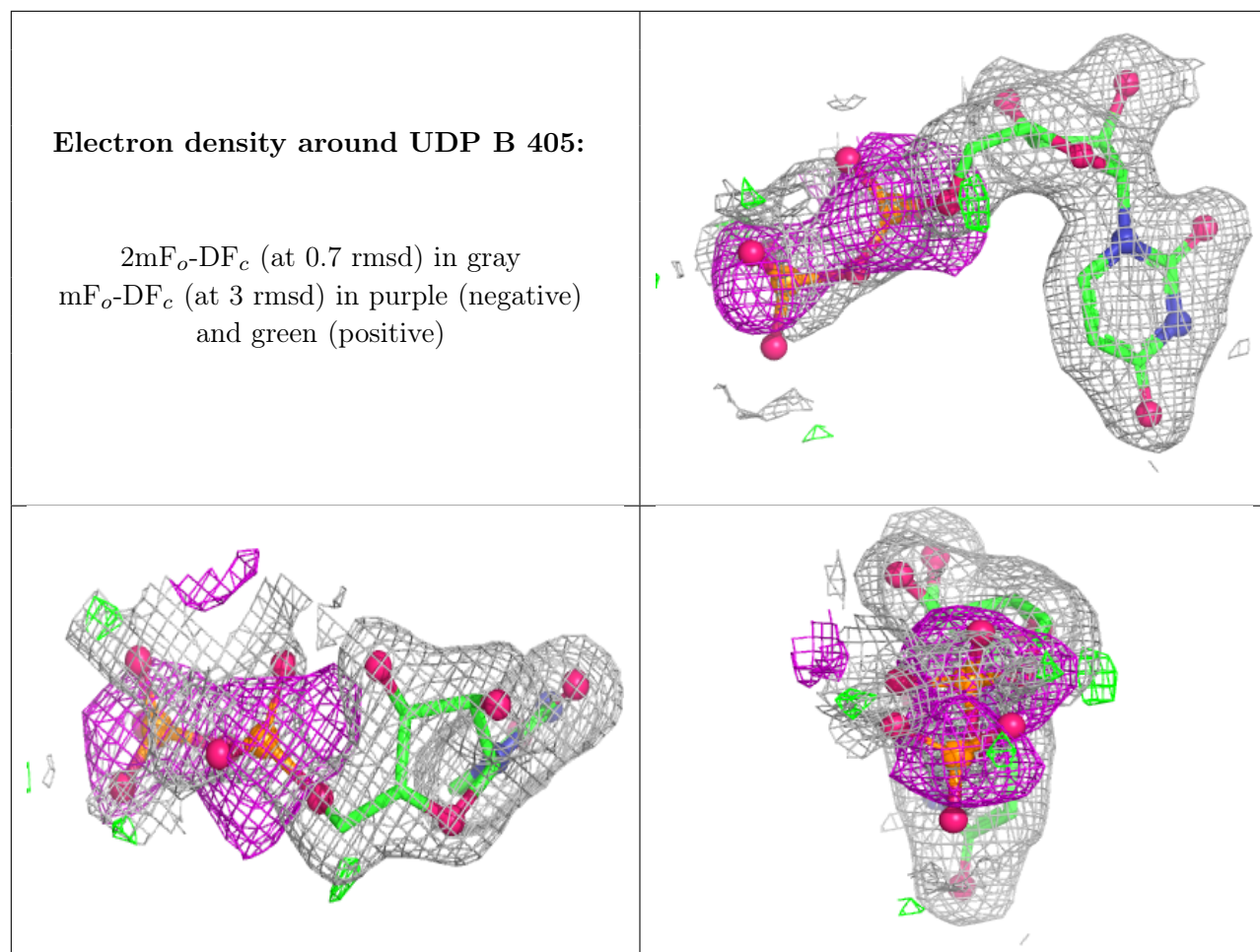
$2mF_o-DF_c$ (at 0.7 rmsd) in gray
 mF_o-DF_c (at 3 rmsd) in purple (negative)
and green (positive)



Electron density around UDP C 405:

$2mF_o-DF_c$ (at 0.7 rmsd) in gray
 mF_o-DF_c (at 3 rmsd) in purple (negative)
and green (positive)





6.5 Other polymers [i](#)

There are no such residues in this entry.