



# Full wwPDB X-ray Structure Validation Report ⓘ

Mar 6, 2026 – 07:51 PM UTC

PDB ID : 4EEZ / pdb\_00004eez  
Title : Crystal Structure of Lactococcus lactis Alcohol Dehydrogenase variant RE1  
Authors : Liu, X.; Bastian, S.; Snow, C.D.; Brustad, E.M.; Saleski, T.; Xu, J.H.; Meinhold, P.; Arnold, F.H.  
Deposited on : 2012-03-28  
Resolution : 1.90 Å(reported)

This is a Full wwPDB X-ray Structure Validation Report for a publicly released PDB entry.

We welcome your comments at [validation@mail.wwpdb.org](mailto:validation@mail.wwpdb.org)

A user guide is available at

<https://www.wwpdb.org/validation/2017/XrayValidationReportHelp>

with specific help available everywhere you see the ⓘ symbol.

The types of validation reports are described at

<http://www.wwpdb.org/validation/2017/FAQs#types>.

---

The following versions of software and data (see [references ⓘ](#)) were used in the production of this report:

MolProbity : 4-5-2 with Phenix2.0  
Mogul : 2022.3.0, CSD as543be (2022)  
Xtriage (Phenix) : 2.0  
EDS : 3.0  
Percentile statistics : 20250101.v01 (using entries in the PDB archive January 1st 2025)  
CCP4 : 9.0.010 (Gargrove)  
Density-Fitness : 1.0.12  
Ideal geometry (proteins) : Engh & Huber (2001)  
Ideal geometry (DNA, RNA) : Parkinson et al. (1996)  
Validation Pipeline (wwPDB-VP) : 2.49

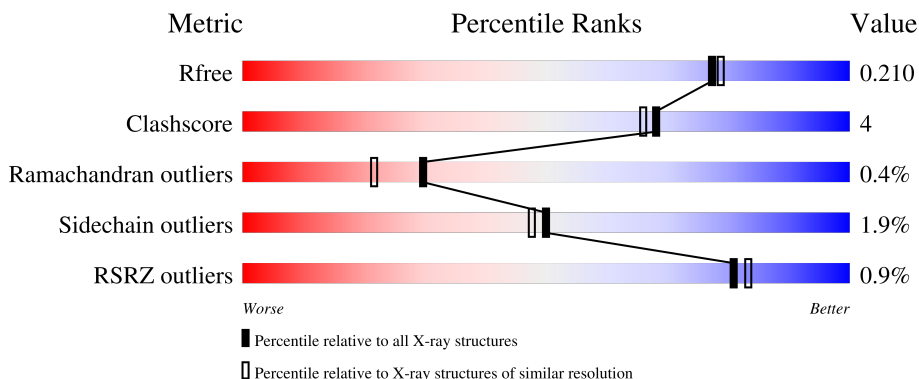
# 1 Overall quality at a glance

The following experimental techniques were used to determine the structure:

*X-RAY DIFFRACTION*

The reported resolution of this entry is 1.90 Å.

Percentile scores (ranging between 0-100) for global validation metrics of the entry are shown in the following graphic. The table shows the number of entries on which the scores are based.



Metric	Whole archive (#Entries)	Similar resolution (#Entries, resolution range(Å))
$R_{free}$	180053	7789 (1.90-1.90)
Clashscore	190562	8410 (1.90-1.90)
Ramachandran outliers	187476	8333 (1.90-1.90)
Sidechain outliers	187428	8333 (1.90-1.90)
RSRZ outliers	180081	7790 (1.90-1.90)

The table below summarises the geometric issues observed across the polymeric chains and their fit to the electron density. The red, orange, yellow and green segments of the lower bar indicate the fraction of residues that contain outliers for  $\geq 3$ , 2, 1 and 0 types of geometric quality criteria respectively. A grey segment represents the fraction of residues that are not modelled. The numeric value for each fraction is indicated below the corresponding segment, with a dot representing fractions  $\leq 5\%$ . The upper red bar (where present) indicates the fraction of residues that have poor fit to the electron density. The numeric value is given above the bar.

Mol	Chain	Length	Quality of chain
1	A	348	 83% 14% .
1	B	348	 86% 11% ..

## 2 Entry composition

There are 4 unique types of molecules in this entry. The entry contains 5465 atoms, of which 0 are hydrogens and 0 are deuteriums.

In the tables below, the ZeroOcc column contains the number of atoms modelled with zero occupancy, the AltConf column contains the number of residues with at least one atom in alternate conformation and the Trace column contains the number of residues modelled with at most 2 atoms.

- Molecule 1 is a protein called Alcohol dehydrogenase 1.

Mol	Chain	Residues	Atoms					ZeroOcc	AltConf	Trace
			Total	C	N	O	S			
1	A	339	2496	1578	419	483	16	0	1	0
1	B	342	2517	1592	421	488	16	0	3	0

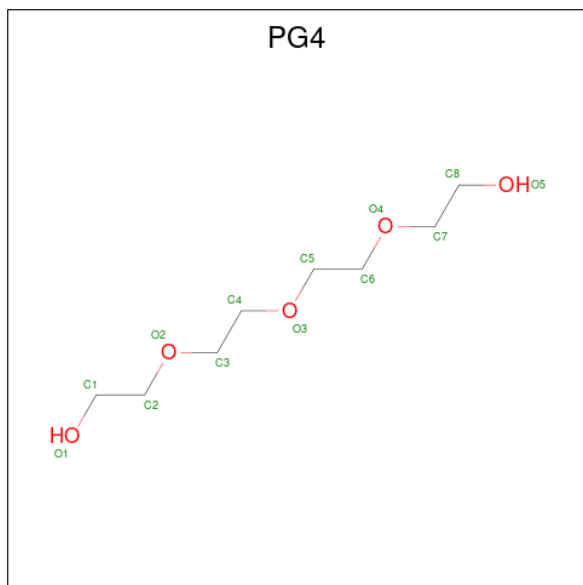
There are 22 discrepancies between the modelled and reference sequences:

Chain	Residue	Modelled	Actual	Comment	Reference
A	50	PHE	TYR	engineered mutation	UNP D2BLA0
A	212	THR	ILE	engineered mutation	UNP D2BLA0
A	264	VAL	LEU	engineered mutation	UNP D2BLA0
A	341	LEU	-	expression tag	UNP D2BLA0
A	342	GLU	-	expression tag	UNP D2BLA0
A	343	HIS	-	expression tag	UNP D2BLA0
A	344	HIS	-	expression tag	UNP D2BLA0
A	345	HIS	-	expression tag	UNP D2BLA0
A	346	HIS	-	expression tag	UNP D2BLA0
A	347	HIS	-	expression tag	UNP D2BLA0
A	348	HIS	-	expression tag	UNP D2BLA0
B	50	PHE	TYR	engineered mutation	UNP D2BLA0
B	212	THR	ILE	engineered mutation	UNP D2BLA0
B	264	VAL	LEU	engineered mutation	UNP D2BLA0
B	341	LEU	-	expression tag	UNP D2BLA0
B	342	GLU	-	expression tag	UNP D2BLA0
B	343	HIS	-	expression tag	UNP D2BLA0
B	344	HIS	-	expression tag	UNP D2BLA0
B	345	HIS	-	expression tag	UNP D2BLA0
B	346	HIS	-	expression tag	UNP D2BLA0
B	347	HIS	-	expression tag	UNP D2BLA0
B	348	HIS	-	expression tag	UNP D2BLA0

- Molecule 2 is ZINC ION (CCD ID: ZN) (formula: Zn).

Mol	Chain	Residues	Atoms	ZeroOcc	AltConf
2	A	2	Total Zn 2 2	0	0
2	B	2	Total Zn 2 2	0	0

- Molecule 3 is TETRAETHYLENE GLYCOL (CCD ID: PG4) (formula: C<sub>8</sub>H<sub>18</sub>O<sub>5</sub>).



Mol	Chain	Residues	Atoms	ZeroOcc	AltConf
3	A	1	Total C O 13 8 5	0	0

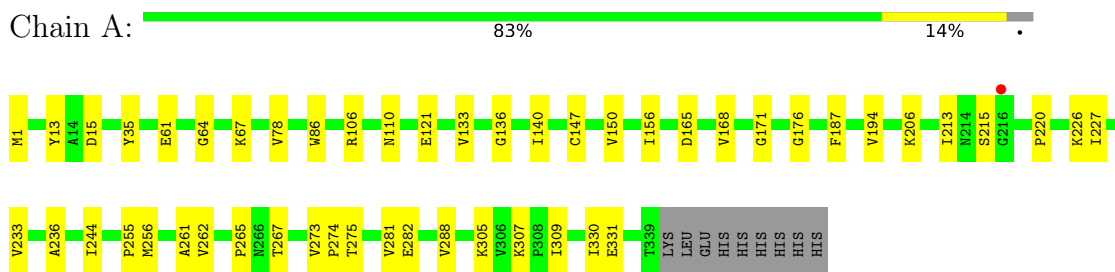
- Molecule 4 is water.

Mol	Chain	Residues	Atoms	ZeroOcc	AltConf
4	A	240	Total O 240 240	0	0
4	B	195	Total O 195 195	0	0

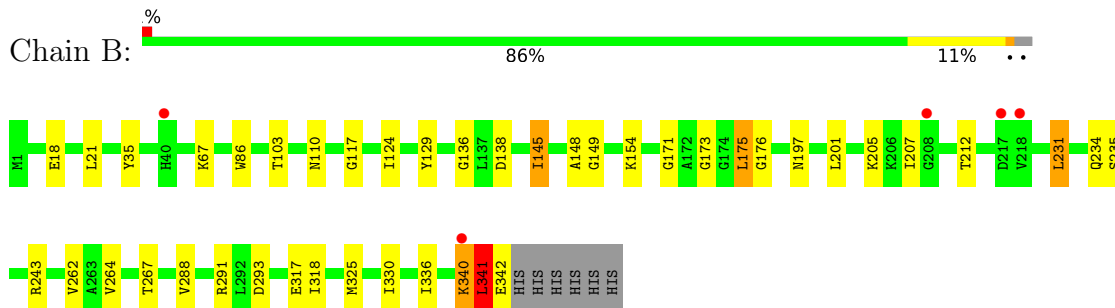
### 3 Residue-property plots [i](#)

These plots are drawn for all protein, RNA, DNA and oligosaccharide chains in the entry. The first graphic for a chain summarises the proportions of the various outlier classes displayed in the second graphic. The second graphic shows the sequence view annotated by issues in geometry and electron density. Residues are color-coded according to the number of geometric quality criteria for which they contain at least one outlier: green = 0, yellow = 1, orange = 2 and red = 3 or more. A red dot above a residue indicates a poor fit to the electron density ( $RSRZ > 2$ ). Stretches of 2 or more consecutive residues without any outlier are shown as a green connector. Residues present in the sample, but not in the model, are shown in grey.

- Molecule 1: Alcohol dehydrogenase 1



- Molecule 1: Alcohol dehydrogenase 1



## 4 Data and refinement statistics i

Property	Value	Source
Space group	C 2 2 21	Depositor
Cell constants a, b, c, $\alpha$ , $\beta$ , $\gamma$	124.40Å 126.55Å 94.22Å 90.00° 90.00° 90.00°	Depositor
Resolution (Å)	37.79 – 1.90 37.79 – 1.90	Depositor EDS
% Data completeness (in resolution range)	97.3 (37.79-1.90) 97.3 (37.79-1.90)	Depositor EDS
$R_{merge}$	(Not available)	Depositor
$R_{sym}$	0.05	Depositor
$\langle I/\sigma(I) \rangle$ <sup>1</sup>	3.05 (at 1.89Å)	Xtrriage
Refinement program	REFMAC 5.5.0109	Depositor
R, $R_{free}$	0.166 , 0.208 0.169 , 0.210	Depositor DCC
$R_{free}$ test set	2859 reflections (5.00%)	wwPDB-VP
Wilson B-factor (Å <sup>2</sup> )	26.5	Xtrriage
Anisotropy	0.015	Xtrriage
Bulk solvent $k_{sol}$ (e/Å <sup>3</sup> ), $B_{sol}$ (Å <sup>2</sup> )	0.34 , 34.6	EDS
L-test for twinning <sup>2</sup>	$\langle  L  \rangle = 0.49$ , $\langle L^2 \rangle = 0.32$	Xtrriage
Estimated twinning fraction	0.022 for -k,-h,-l	Xtrriage
$F_o, F_c$ correlation	0.97	EDS
Total number of atoms	5465	wwPDB-VP
Average B, all atoms (Å <sup>2</sup> )	30.0	wwPDB-VP

Xtrriage's analysis on translational NCS is as follows: *The largest off-origin peak in the Patterson function is 3.76% of the height of the origin peak. No significant pseudotranslation is detected.*

<sup>1</sup>Intensities estimated from amplitudes.

<sup>2</sup>Theoretical values of  $\langle |L| \rangle$ ,  $\langle L^2 \rangle$  for acentric reflections are 0.5, 0.333 respectively for untwinned datasets, and 0.375, 0.2 for perfectly twinned datasets.

## 5 Model quality [i](#)

### 5.1 Standard geometry [i](#)

Bond lengths and bond angles in the following residue types are not validated in this section: PG4, ZN

The Z score for a bond length (or angle) is the number of standard deviations the observed value is removed from the expected value. A bond length (or angle) with  $|Z| > 5$  is considered an outlier worth inspection. RMSZ is the root-mean-square of all Z scores of the bond lengths (or angles).

Mol	Chain	Bond lengths		Bond angles	
		RMSZ	# Z  >5	RMSZ	# Z  >5
1	A	1.55	14/2535 (0.6%)	1.22	3/3433 (0.1%)
1	B	1.40	9/2562 (0.4%)	1.26	7/3472 (0.2%)
All	All	1.48	23/5097 (0.5%)	1.24	10/6905 (0.1%)

All (23) bond length outliers are listed below:

Mol	Chain	Res	Type	Atoms	Z	Observed(Å)	Ideal(Å)
1	A	78	VAL	CA-CB	8.90	1.63	1.54
1	A	133	VAL	CA-C	7.78	1.59	1.53
1	A	165	ASP	N-CA	7.29	1.55	1.45
1	B	262	VAL	C-O	-6.67	1.17	1.24
1	B	154	LYS	C-O	6.62	1.31	1.24
1	A	307	LYS	C-O	6.53	1.30	1.24
1	B	336	ILE	CA-CB	6.17	1.61	1.54
1	A	64	GLY	N-CA	6.12	1.51	1.45
1	B	145	ILE	N-CA	6.03	1.54	1.46
1	A	236	ALA	C-O	-5.97	1.17	1.24
1	A	133	VAL	N-CA	-5.88	1.42	1.46
1	B	264	VAL	CA-CB	5.85	1.61	1.54
1	A	273	VAL	CA-CB	5.83	1.57	1.53
1	B	35	TYR	CA-C	-5.75	1.45	1.52
1	B	173	GLY	C-O	5.56	1.29	1.23
1	A	106	ARG	CG-CD	5.38	1.68	1.52
1	A	13	TYR	N-CA	5.37	1.53	1.45
1	A	330	ILE	C-O	-5.32	1.17	1.24
1	A	261	ALA	N-CA	5.22	1.52	1.46
1	B	293	ASP	C-O	5.19	1.30	1.24
1	B	103	THR	N-CA	5.16	1.52	1.46
1	A	150	VAL	CA-C	5.09	1.59	1.52
1	A	307	LYS	N-CA	-5.06	1.42	1.46

All (10) bond angle outliers are listed below:

Mol	Chain	Res	Type	Atoms	Z	Observed(°)	Ideal(°)
1	B	138	ASP	CA-C-N	-8.26	111.22	119.56
1	B	138	ASP	C-N-CA	-8.26	111.22	119.56
1	B	340	LYS	N-CA-C	-7.41	96.82	108.90
1	B	67	LYS	N-CA-C	-7.21	105.02	113.88
1	A	136	GLY	N-CA-C	-6.28	106.75	114.92
1	B	117	GLY	N-CA-C	5.74	120.81	112.60
1	B	231	LEU	N-CA-C	5.72	118.73	111.69
1	A	262	VAL	N-CA-CB	-5.62	107.03	111.64
1	A	273	VAL	N-CA-CB	5.29	113.83	110.50
1	B	136	GLY	N-CA-C	-5.04	108.02	114.37

There are no chirality outliers.

There are no planarity outliers.

## 5.2 Too-close contacts [i](#)

In the following table, the Non-H and H(model) columns list the number of non-hydrogen atoms and hydrogen atoms in the chain respectively. The H(added) column lists the number of hydrogen atoms added and optimized by MolProbity. The Clashes column lists the number of clashes within the asymmetric unit, whereas Symm-Clashes lists symmetry-related clashes.

Mol	Chain	Non-H	H(model)	H(added)	Clashes	Symm-Clashes
1	A	2496	0	2511	16	1
1	B	2517	0	2524	20	0
2	A	2	0	0	0	0
2	B	2	0	0	0	0
3	A	13	0	18	0	0
4	A	240	0	0	3	1
4	B	195	0	0	1	1
All	All	5465	0	5053	36	2

The all-atom clashscore is defined as the number of clashes found per 1000 atoms (including hydrogen atoms). The all-atom clashscore for this structure is 4.

All (36) close contacts within the same asymmetric unit are listed below, sorted by their clash magnitude.

Atom-1	Atom-2	Interatomic distance (Å)	Clash overlap (Å)
1:B:340:LYS:O	4:B:680:HOH:O	1.73	1.06
1:A:282:GLU:OE2	4:A:726:HOH:O	1.91	0.88

*Continued on next page...*

Continued from previous page...

Atom-1	Atom-2	Interatomic distance (Å)	Clash overlap (Å)
1:A:265:PRO:HG2	1:A:267:THR:HG22	1.70	0.74
1:B:341:LEU:O	1:B:342:GLU:HB3	1.88	0.73
1:B:342:GLU:HG3	1:B:342:GLU:O	2.03	0.59
1:A:168:VAL:HG12	1:A:233:VAL:HG21	1.88	0.56
1:B:325:MET:HG2	1:B:330:ILE:HD12	1.88	0.55
1:B:148:ALA:HB1	1:B:175:LEU:HD22	1.90	0.54
1:B:325:MET:CG	1:B:330:ILE:HD12	2.38	0.54
1:A:206:LYS:NZ	4:A:581:HOH:O	2.38	0.53
1:B:86:TRP:O	1:B:110:ASN:HA	2.10	0.51
1:A:305:LYS:HE3	4:A:691:HOH:O	2.10	0.50
1:B:171:GLY:O	1:B:176:GLY:HA3	2.13	0.48
1:A:171:GLY:O	1:A:176:GLY:HA3	2.13	0.48
1:A:86:TRP:O	1:A:110:ASN:HA	2.14	0.47
1:B:201:LEU:HD22	1:B:212:THR:HB	1.97	0.47
1:B:234:GLN:NE2	1:B:235:SER:OG	2.48	0.47
1:A:194:VAL:HG22	1:A:213:ILE:HB	1.97	0.46
1:B:341:LEU:O	1:B:342:GLU:CB	2.63	0.46
1:A:215:SER:HB3	1:A:220:PRO:HG3	1.98	0.45
1:A:275:THR:HG22	1:A:281:VAL:CG2	2.47	0.45
1:B:148:ALA:CB	1:B:175:LEU:HD22	2.46	0.44
1:B:231:LEU:HD23	1:B:231:LEU:HA	1.70	0.44
1:A:35:TYR:CZ	1:A:140:ILE:HG12	2.54	0.43
1:A:156:ILE:HG21	1:A:187:PHE:CD2	2.54	0.43
1:A:1:MET:HB2	1:A:121:GLU:HB2	2.00	0.43
1:B:243:ARG:HD2	1:B:267:THR:OG1	2.20	0.42
1:A:255:PRO:O	1:A:256:MET:HB2	2.19	0.42
1:B:129:TYR:HA	1:B:291:ARG:HD3	2.00	0.42
1:B:342:GLU:O	1:B:342:GLU:CG	2.67	0.41
1:A:226:LYS:O	1:A:227:ILE:C	2.63	0.41
1:B:197:ASN:C	1:B:197:ASN:OD1	2.64	0.41
1:B:145:ILE:HA	1:B:149:GLY:HA3	2.02	0.41
1:A:61:GLU:OE2	1:A:147:CYS:HB3	2.21	0.41
1:B:317:GLU:O	1:B:318:ILE:C	2.63	0.40
1:B:21:LEU:HD13	1:B:124:ILE:HG13	2.03	0.40

All (2) symmetry-related close contacts are listed below. The label for Atom-2 includes the symmetry operator and encoded unit-cell translations to be applied.

Atom-1	Atom-2	Interatomic distance (Å)	Clash overlap (Å)
1:A:15:ASP:OD1	4:A:655:HOH:O[4_554]	2.06	0.14
4:B:678:HOH:O	4:B:683:HOH:O[4_555]	2.09	0.11

## 5.3 Torsion angles [i](#)

### 5.3.1 Protein backbone [i](#)

In the following table, the Percentiles column shows the percent Ramachandran outliers of the chain as a percentile score with respect to all X-ray entries followed by that with respect to entries of similar resolution.

The Analysed column shows the number of residues for which the backbone conformation was analysed, and the total number of residues.

Mol	Chain	Analysed	Favoured	Allowed	Outliers	Percentiles	
1	A	338/348 (97%)	332 (98%)	5 (2%)	1 (0%)	36	29
1	B	343/348 (99%)	338 (98%)	3 (1%)	2 (1%)	21	13
All	All	681/696 (98%)	670 (98%)	8 (1%)	3 (0%)	30	22

All (3) Ramachandran outliers are listed below:

Mol	Chain	Res	Type
1	B	288	VAL
1	B	341	LEU
1	A	288	VAL

### 5.3.2 Protein sidechains [i](#)

In the following table, the Percentiles column shows the percent sidechain outliers of the chain as a percentile score with respect to all X-ray entries followed by that with respect to entries of similar resolution.

The Analysed column shows the number of residues for which the sidechain conformation was analysed, and the total number of residues.

Mol	Chain	Analysed	Rotameric	Outliers	Percentiles	
1	A	262/271 (97%)	257 (98%)	5 (2%)	50	47
1	B	263/271 (97%)	258 (98%)	5 (2%)	50	47
All	All	525/542 (97%)	515 (98%)	10 (2%)	50	47

All (10) residues with a non-rotameric sidechain are listed below:

Mol	Chain	Res	Type
1	A	67	LYS
1	A	244	ILE
1	A	274	PRO

*Continued on next page...*

*Continued from previous page...*

Mol	Chain	Res	Type
1	A	309	ILE
1	A	331	GLU
1	B	18	GLU
1	B	175	LEU
1	B	205	LYS
1	B	207	ILE
1	B	341	LEU

Sometimes sidechains can be flipped to improve hydrogen bonding and reduce clashes. All (6) such sidechains are listed below:

Mol	Chain	Res	Type
1	A	40	HIS
1	A	44	HIS
1	A	167	GLN
1	A	234	GLN
1	B	234	GLN
1	B	299	GLN

### 5.3.3 RNA [i](#)

There are no RNA molecules in this entry.

### 5.4 Non-standard residues in protein, DNA, RNA chains [i](#)

There are no non-standard protein/DNA/RNA residues in this entry.

### 5.5 Carbohydrates [i](#)

There are no oligosaccharides in this entry.

### 5.6 Ligand geometry [i](#)

Of 5 ligands modelled in this entry, 4 are monoatomic - leaving 1 for Mogul analysis.

In the following table, the Counts columns list the number of bonds (or angles) for which Mogul statistics could be retrieved, the number of bonds (or angles) that are observed in the model and the number of bonds (or angles) that are defined in the Chemical Component Dictionary. The Link column lists molecule types, if any, to which the group is linked. The Z score for a bond length (or angle) is the number of standard deviations the observed value is removed from the

expected value. A bond length (or angle) with  $|Z| > 2$  is considered an outlier worth inspection. RMSZ is the root-mean-square of all Z scores of the bond lengths (or angles).

Mol	Type	Chain	Res	Link	Bond lengths			Bond angles		
					Counts	RMSZ	$\# Z  > 2$	Counts	RMSZ	$\# Z  > 2$
3	PG4	A	403	-	12,12,12	0.55	0	11,11,11	0.59	0

In the following table, the Chirals column lists the number of chiral outliers, the number of chiral centers analysed, the number of these observed in the model and the number defined in the Chemical Component Dictionary. Similar counts are reported in the Torsion and Rings columns. '-' means no outliers of that kind were identified.

Mol	Type	Chain	Res	Link	Chirals	Torsions	Rings
3	PG4	A	403	-	-	5/10/10/10	-

There are no bond length outliers.

There are no bond angle outliers.

There are no chirality outliers.

All (5) torsion outliers are listed below:

Mol	Chain	Res	Type	Atoms
3	A	403	PG4	O4-C7-C8-O5
3	A	403	PG4	C8-C7-O4-C6
3	A	403	PG4	O2-C3-C4-O3
3	A	403	PG4	C6-C5-O3-C4
3	A	403	PG4	C1-C2-O2-C3

There are no ring outliers.

No monomer is involved in short contacts.

## 5.7 Other polymers [i](#)

There are no such residues in this entry.

## 5.8 Polymer linkage issues [i](#)

There are no chain breaks in this entry.

## 6 Fit of model and data [i](#)

### 6.1 Protein, DNA and RNA chains [i](#)

In the following table, the column labelled ‘#RSRZ> 2’ contains the number (and percentage) of RSRZ outliers, followed by percent RSRZ outliers for the chain as percentile scores relative to all X-ray entries and entries of similar resolution. The OWAB column contains the minimum, median, 95<sup>th</sup> percentile and maximum values of the occupancy-weighted average B-factor per residue. The column labelled ‘Q< 0.9’ lists the number of (and percentage) of residues with an average occupancy less than 0.9.

Mol	Chain	Analysed	<RSRZ>	#RSRZ>2	OWAB(Å <sup>2</sup> )	Q<0.9
1	A	339/348 (97%)	-0.48	1 (0%) 90 91	16, 26, 40, 52	1 (0%)
1	B	342/348 (98%)	-0.28	5 (1%) 72 75	15, 30, 51, 64	3 (0%)
All	All	681/696 (97%)	-0.38	6 (0%) 81 83	15, 28, 47, 64	4 (0%)

All (6) RSRZ outliers are listed below:

Mol	Chain	Res	Type	RSRZ
1	B	217	ASP	2.6
1	B	218	VAL	2.3
1	A	216	GLY	2.3
1	B	340	LYS	2.2
1	B	208	GLY	2.0
1	B	40	HIS	2.0

### 6.2 Non-standard residues in protein, DNA, RNA chains [i](#)

There are no non-standard protein/DNA/RNA residues in this entry.

### 6.3 Carbohydrates [i](#)

There are no oligosaccharides in this entry.

### 6.4 Ligands [i](#)

In the following table, the Atoms column lists the number of modelled atoms in the group and the number defined in the chemical component dictionary. The B-factors column lists the minimum, median, 95<sup>th</sup> percentile and maximum values of B factors of atoms in the group. The column labelled ‘Q< 0.9’ lists the number of atoms with occupancy less than 0.9.

Mol	Type	Chain	Res	Atoms	RSCC	RSR	B-factors( $\text{\AA}^2$ )	Q<0.9
3	PG4	A	403	13/13	0.94	0.11	41,49,54,57	0
2	ZN	B	402	1/1	0.99	0.08	39,39,39,39	0
2	ZN	B	401	1/1	1.00	0.01	22,22,22,22	0
2	ZN	A	401	1/1	1.00	0.01	24,24,24,24	0
2	ZN	A	402	1/1	1.00	0.06	30,30,30,30	0

## 6.5 Other polymers [i](#)

There are no such residues in this entry.