



wwPDB X-ray Structure Validation Summary Report ⓘ

Apr 19, 2026 – 02:44 AM UTC

PDB ID : 6EEI / pdb_00006eei
Title : Crystal structure of Arabidopsis thaliana phenylacetaldehyde synthase in complex with L-phenylalanine
Authors : Torrens-Spence, M.P.; Chiang, Y.; Smith, T.; Vicent, M.A.; Wang, Y.; Weng, J.K.
Deposited on : 2018-08-14
Resolution : 1.99 Å(reported)

This is a wwPDB X-ray Structure Validation Summary Report for a publicly released PDB entry.

We welcome your comments at validation@mail.wwpdb.org

A user guide is available at

<https://www.wwpdb.org/validation/2017/XrayValidationReportHelp>

with specific help available everywhere you see the ⓘ symbol.

The types of validation reports are described at

<http://www.wwpdb.org/validation/2017/FAQs#types>.

The following versions of software and data (see [references ⓘ](#)) were used in the production of this report:

MolProbity : 4-5-2 with Phenix2.0
Mogul : 2022.3.0, CSD as543be (2022)
Xtriage (Phenix) : 2.0
EDS : 3.0
Percentile statistics : 20250101.v01 (using entries in the PDB archive January 1st 2025)
CCP4 : 9.0.010 (Gargrove)
Density-Fitness : 1.0.12
Ideal geometry (proteins) : Engh & Huber (2001)
Ideal geometry (DNA, RNA) : Parkinson et al. (1996)
Validation Pipeline (wwPDB-VP) : 2.49

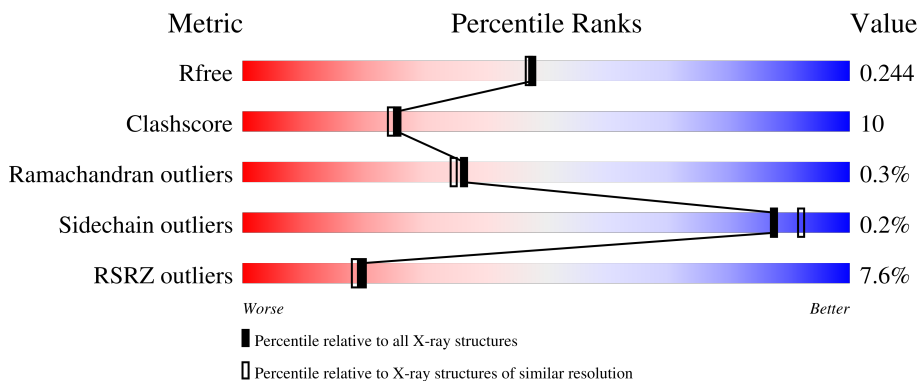
1 Overall quality at a glance

The following experimental techniques were used to determine the structure:

X-RAY DIFFRACTION

The reported resolution of this entry is 1.99 Å.

Percentile scores (ranging between 0-100) for global validation metrics of the entry are shown in the following graphic. The table shows the number of entries on which the scores are based.



Metric	Whole archive (#Entries)	Similar resolution (#Entries, resolution range(Å))
R_{free}	180053	10052 (2.00-2.00)
Clashscore	190562	11152 (2.00-2.00)
Ramachandran outliers	187476	11031 (2.00-2.00)
Sidechain outliers	187428	11029 (2.00-2.00)
RSRZ outliers	180081	10067 (2.00-2.00)

The table below summarises the geometric issues observed across the polymeric chains and their fit to the electron density. The red, orange, yellow and green segments of the lower bar indicate the fraction of residues that contain outliers for ≥ 3 , 2, 1 and 0 types of geometric quality criteria respectively. A grey segment represents the fraction of residues that are not modelled. The numeric value for each fraction is indicated below the corresponding segment, with a dot representing fractions $\leq 5\%$. The upper red bar (where present) indicates the fraction of residues that have poor fit to the electron density. The numeric value is given above the bar.

Mol	Chain	Length	Quality of chain
1	A	490	 6% 75% 20% 5%
1	B	490	 9% 77% 19% 5%

2 Entry composition [i](#)

There are 4 unique types of molecules in this entry. The entry contains 7681 atoms, of which 26 are hydrogens and 0 are deuteriums.

In the tables below, the ZeroOcc column contains the number of atoms modelled with zero occupancy, the AltConf column contains the number of residues with at least one atom in alternate conformation and the Trace column contains the number of residues modelled with at most 2 atoms.

- Molecule 1 is a protein called Tyrosine decarboxylase 1.

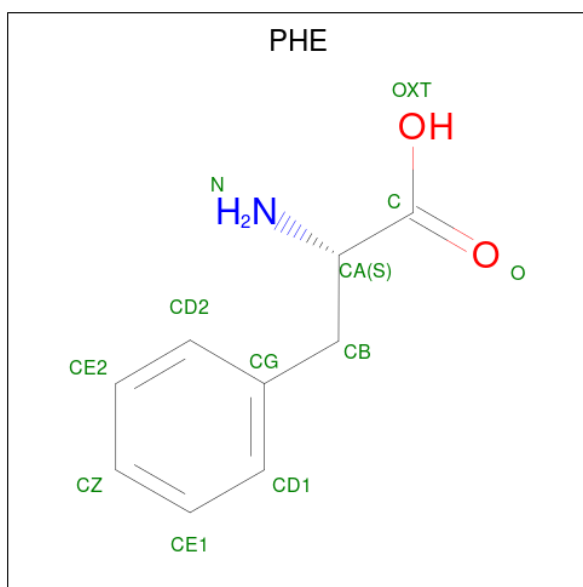
Mol	Chain	Residues	Atoms						ZeroOcc	AltConf	Trace
			Total	C	N	O	P	S			
1	A	466	Total 3696	C 2366	N 622	O 690	P 1	S 17	0	4	0
1	B	471	Total 3723	C 2384	N 624	O 697	P 1	S 17	0	2	0

- Molecule 2 is SULFATE ION (CCD ID: SO4) (formula: O₄S).



Mol	Chain	Residues	Atoms			ZeroOcc	AltConf
			Total	O	S		
2	A	1	Total 5	O 4	S 1	0	0
2	B	1	Total 5	O 4	S 1	0	0

- Molecule 3 is PHENYLALANINE (CCD ID: PHE) (formula: C₉H₁₁NO₂).



Mol	Chain	Residues	Atoms					ZeroOcc	AltConf
			Total	C	H	N	O		
3	A	1	23	9	11	1	2	0	0
3	B	1	23	9	11	1	2	0	0

- Molecule 4 is water.

Mol	Chain	Residues	Atoms		ZeroOcc	AltConf	
			Total	O			
4	A	102	102	102	0	0	
4	B	100	104	4	100	0	0

4 Data and refinement statistics

Property	Value	Source
Space group	P 21 21 21	Depositor
Cell constants a, b, c, α , β , γ	78.06Å 106.79Å 115.90Å 90.00° 90.00° 90.00°	Depositor
Resolution (Å)	78.54 – 1.99 78.54 – 1.99	Depositor EDS
% Data completeness (in resolution range)	94.9 (78.54-1.99) 95.3 (78.54-1.99)	Depositor EDS
R_{merge}	(Not available)	Depositor
R_{sym}	(Not available)	Depositor
$\langle I/\sigma(I) \rangle$ ¹	1.52 (at 1.98Å)	Xtrriage
Refinement program	PHENIX 1.12_2829	Depositor
R, R_{free}	0.205 , 0.240 0.211 , 0.244	Depositor DCC
R_{free} test set	3240 reflections (5.06%)	wwPDB-VP
Wilson B-factor (Å ²)	41.1	Xtrriage
Anisotropy	0.525	Xtrriage
Bulk solvent k_{sol} (e/Å ³), B_{sol} (Å ²)	0.30 , 34.2	EDS
L-test for twinning ²	$\langle L \rangle = 0.48$, $\langle L^2 \rangle = 0.32$	Xtrriage
Estimated twinning fraction	No twinning to report.	Xtrriage
F_o, F_c correlation	0.95	EDS
Total number of atoms	7681	wwPDB-VP
Average B, all atoms (Å ²)	62.0	wwPDB-VP

Xtrriage's analysis on translational NCS is as follows: *The largest off-origin peak in the Patterson function is 4.39% of the height of the origin peak. No significant pseudotranslation is detected.*

¹Intensities estimated from amplitudes.

²Theoretical values of $\langle |L| \rangle$, $\langle L^2 \rangle$ for acentric reflections are 0.5, 0.333 respectively for untwinned datasets, and 0.375, 0.2 for perfectly twinned datasets.

5 Model quality

5.1 Standard geometry

Bond lengths and bond angles in the following residue types are not validated in this section: SO4, LLP

The Z score for a bond length (or angle) is the number of standard deviations the observed value is removed from the expected value. A bond length (or angle) with $|Z| > 5$ is considered an outlier worth inspection. RMSZ is the root-mean-square of all Z scores of the bond lengths (or angles).

Mol	Chain	Bond lengths		Bond angles	
		RMSZ	# Z >5	RMSZ	# Z >5
1	A	0.22	0/3755	0.43	0/5102
1	B	0.22	0/3783	0.41	0/5141
All	All	0.22	0/7538	0.42	0/10243

There are no bond length outliers.

There are no bond angle outliers.

There are no chirality outliers.

There are no planarity outliers.

5.2 Too-close contacts

In the following table, the Non-H and H(model) columns list the number of non-hydrogen atoms and hydrogen atoms in the chain respectively. The H(added) column lists the number of hydrogen atoms added and optimized by MolProbity. The Clashes column lists the number of clashes within the asymmetric unit, whereas Symm-Clashes lists symmetry-related clashes.

Mol	Chain	Non-H	H(model)	H(added)	Clashes	Symm-Clashes
1	A	3696	0	3670	81	0
1	B	3723	0	3689	77	0
2	A	5	0	0	0	0
2	B	5	0	0	0	0
3	A	12	11	8	1	0
3	B	12	11	8	1	0
4	A	102	0	0	5	0
4	B	100	4	0	3	0
All	All	7655	26	7375	143	0

The all-atom clashscore is defined as the number of clashes found per 1000 atoms (including hydrogen atoms). The all-atom clashscore for this structure is 10.

The worst 5 of 143 close contacts within the same asymmetric unit are listed below, sorted by their clash magnitude.

Atom-1	Atom-2	Interatomic distance (Å)	Clash overlap (Å)
1:B:124:GLU:HA	1:B:127:MET:HE3	1.26	1.14
1:B:123:THR:HG22	1:B:127:MET:HE2	1.42	0.97
1:A:63:THR:HG23	1:A:66:GLN:H	1.33	0.94
1:B:124:GLU:HA	1:B:127:MET:CE	2.10	0.80
1:A:448:MET:HE3	1:A:461:CYS:HB2	1.69	0.75

There are no symmetry-related clashes.

5.3 Torsion angles [i](#)

5.3.1 Protein backbone [i](#)

In the following table, the Percentiles column shows the percent Ramachandran outliers of the chain as a percentile score with respect to all X-ray entries followed by that with respect to entries of similar resolution.

The Analysed column shows the number of residues for which the backbone conformation was analysed, and the total number of residues.

Mol	Chain	Analysed	Favoured	Allowed	Outliers	Percentiles	
1	A	463/490 (94%)	445 (96%)	17 (4%)	1 (0%)	43	42
1	B	466/490 (95%)	452 (97%)	12 (3%)	2 (0%)	30	27
All	All	929/980 (95%)	897 (97%)	29 (3%)	3 (0%)	36	35

All (3) Ramachandran outliers are listed below:

Mol	Chain	Res	Type
1	A	119	SER
1	B	119	SER
1	B	464	GLY

5.3.2 Protein sidechains [i](#)

In the following table, the Percentiles column shows the percent sidechain outliers of the chain as a percentile score with respect to all X-ray entries followed by that with respect to entries of similar resolution.

The Analysed column shows the number of residues for which the sidechain conformation was

analysed, and the total number of residues.

Mol	Chain	Analysed	Rotameric	Outliers	Percentiles	
1	A	403/419 (96%)	402 (100%)	1 (0%)	87	92
1	B	406/419 (97%)	405 (100%)	1 (0%)	87	92
All	All	809/838 (96%)	807 (100%)	2 (0%)	87	92

All (2) residues with a non-rotameric sidechain are listed below:

Mol	Chain	Res	Type
1	A	175	SER
1	B	117	VAL

Sometimes sidechains can be flipped to improve hydrogen bonding and reduce clashes. 5 of 6 such sidechains are listed below:

Mol	Chain	Res	Type
1	B	201	GLN
1	B	229	GLN
1	B	325	GLN
1	B	142	GLN
1	A	229	GLN

5.3.3 RNA [i](#)

There are no RNA molecules in this entry.

5.4 Non-standard residues in protein, DNA, RNA chains [i](#)

2 non-standard protein/DNA/RNA residues are modelled in this entry.

In the following table, the Counts columns list the number of bonds (or angles) for which Mogul statistics could be retrieved, the number of bonds (or angles) that are observed in the model and the number of bonds (or angles) that are defined in the Chemical Component Dictionary. The Link column lists molecule types, if any, to which the group is linked. The Z score for a bond length (or angle) is the number of standard deviations the observed value is removed from the expected value. A bond length (or angle) with $|Z| > 2$ is considered an outlier worth inspection. RMSZ is the root-mean-square of all Z scores of the bond lengths (or angles).

Mol	Type	Chain	Res	Link	Bond lengths			Bond angles		
					Counts	RMSZ	# Z > 2	Counts	RMSZ	# Z > 2
1	LLP	B	309	1	23,24,25	2.53	6 (26%)	25,32,34	1.48	5 (20%)
1	LLP	A	309	1	23,24,25	2.57	7 (30%)	25,32,34	1.26	4 (16%)

In the following table, the Chirals column lists the number of chiral outliers, the number of chiral centers analysed, the number of these observed in the model and the number defined in the Chemical Component Dictionary. Similar counts are reported in the Torsion and Rings columns. '-' means no outliers of that kind were identified.

Mol	Type	Chain	Res	Link	Chirals	Torsions	Rings
1	LLP	B	309	1	-	9/16/17/19	0/1/1/1
1	LLP	A	309	1	-	9/16/17/19	0/1/1/1

The worst 5 of 13 bond length outliers are listed below:

Mol	Chain	Res	Type	Atoms	Z	Observed(Å)	Ideal(Å)
1	A	309	LLP	C4-C4'	7.50	1.62	1.46
1	B	309	LLP	C4-C4'	7.20	1.62	1.46
1	A	309	LLP	C4'-NZ	5.08	1.44	1.27
1	B	309	LLP	C4'-NZ	4.93	1.43	1.27
1	B	309	LLP	C2'-C2	4.06	1.56	1.50

The worst 5 of 9 bond angle outliers are listed below:

Mol	Chain	Res	Type	Atoms	Z	Observed(°)	Ideal(°)
1	B	309	LLP	C4-C4'-NZ	-3.66	107.15	124.04
1	A	309	LLP	C4-C4'-NZ	-3.13	109.61	124.04
1	B	309	LLP	C3-C4-C5	2.61	120.38	118.28
1	B	309	LLP	CE-NZ-C4'	-2.60	110.39	118.72
1	A	309	LLP	CE-NZ-C4'	-2.34	111.22	118.72

There are no chirality outliers.

5 of 18 torsion outliers are listed below:

Mol	Chain	Res	Type	Atoms
1	A	309	LLP	C5'-OP4-P-OP2
1	A	309	LLP	C5'-OP4-P-OP3
1	B	309	LLP	C5'-OP4-P-OP2
1	B	309	LLP	C5'-OP4-P-OP3
1	B	309	LLP	C4-C4'-NZ-CE

There are no ring outliers.

2 monomers are involved in 2 short contacts:

Mol	Chain	Res	Type	Clashes	Symm-Clashes
1	B	309	LLP	1	0
1	A	309	LLP	1	0

5.5 Carbohydrates [i](#)

There are no oligosaccharides in this entry.

5.6 Ligand geometry [i](#)

4 ligands are modelled in this entry.

In the following table, the Counts columns list the number of bonds (or angles) for which Mogul statistics could be retrieved, the number of bonds (or angles) that are observed in the model and the number of bonds (or angles) that are defined in the Chemical Component Dictionary. The Link column lists molecule types, if any, to which the group is linked. The Z score for a bond length (or angle) is the number of standard deviations the observed value is removed from the expected value. A bond length (or angle) with $|Z| > 2$ is considered an outlier worth inspection. RMSZ is the root-mean-square of all Z scores of the bond lengths (or angles).

Mol	Type	Chain	Res	Link	Bond lengths			Bond angles		
					Counts	RMSZ	# Z > 2	Counts	RMSZ	# Z > 2
3	PHE	B	502	-	11,12,12	0.71	1 (9%)	11,15,15	0.94	1 (9%)
2	SO4	B	501	-	4,4,4	0.22	0	6,6,6	0.11	0
3	PHE	A	502	-	11,12,12	0.71	1 (9%)	11,15,15	0.87	1 (9%)
2	SO4	A	501	-	4,4,4	0.24	0	6,6,6	0.07	0

In the following table, the Chirals column lists the number of chiral outliers, the number of chiral centers analysed, the number of these observed in the model and the number defined in the Chemical Component Dictionary. Similar counts are reported in the Torsion and Rings columns. '-' means no outliers of that kind were identified.

Mol	Type	Chain	Res	Link	Chirals	Torsions	Rings
3	PHE	B	502	-	-	2/8/8/8	0/1/1/1
3	PHE	A	502	-	-	0/8/8/8	0/1/1/1

All (2) bond length outliers are listed below:

Mol	Chain	Res	Type	Atoms	Z	Observed(Å)	Ideal(Å)
3	A	502	PHE	OXT-C	-2.21	1.23	1.30
3	B	502	PHE	OXT-C	-2.18	1.23	1.30

All (2) bond angle outliers are listed below:

Mol	Chain	Res	Type	Atoms	Z	Observed(°)	Ideal(°)
3	B	502	PHE	OXT-C-O	-3.07	117.13	124.08
3	A	502	PHE	OXT-C-O	-2.83	117.67	124.08

There are no chirality outliers.

All (2) torsion outliers are listed below:

Mol	Chain	Res	Type	Atoms
3	B	502	PHE	CA-CB-CG-CD1
3	B	502	PHE	CA-CB-CG-CD2

There are no ring outliers.

2 monomers are involved in 2 short contacts:

Mol	Chain	Res	Type	Clashes	Symm-Clashes
3	B	502	PHE	1	0
3	A	502	PHE	1	0

5.7 Other polymers [i](#)

There are no such residues in this entry.

5.8 Polymer linkage issues [i](#)

There are no chain breaks in this entry.

6 Fit of model and data [i](#)

6.1 Protein, DNA and RNA chains [i](#)

In the following table, the column labelled ‘#RSRZ > 2’ contains the number (and percentage) of RSRZ outliers, followed by percent RSRZ outliers for the chain as percentile scores relative to all X-ray entries and entries of similar resolution. The OWAB column contains the minimum, median, 95th percentile and maximum values of the occupancy-weighted average B-factor per residue. The column labelled ‘Q < 0.9’ lists the number of (and percentage) of residues with an average occupancy less than 0.9.

Mol	Chain	Analysed	<RSRZ>	#RSRZ>2	OWAB(Å ²)	Q<0.9
1	A	465/490 (94%)	0.70	28 (6%) 27 26	21, 57, 85, 106	4 (0%)
1	B	470/490 (95%)	0.82	43 (9%) 15 13	34, 60, 98, 170	2 (0%)
All	All	935/980 (95%)	0.76	71 (7%) 20 18	21, 58, 91, 170	6 (0%)

The worst 5 of 71 RSRZ outliers are listed below:

Mol	Chain	Res	Type	RSRZ
1	B	339	LEU	5.4
1	B	402	PRO	4.8
1	B	429	CYS	4.1
1	B	338	PHE	4.1
1	B	403	ASN	4.0

6.2 Non-standard residues in protein, DNA, RNA chains [i](#)

In the following table, the Atoms column lists the number of modelled atoms in the group and the number defined in the chemical component dictionary. The B-factors column lists the minimum, median, 95th percentile and maximum values of B factors of atoms in the group. The column labelled ‘Q < 0.9’ lists the number of atoms with occupancy less than 0.9.

Mol	Type	Chain	Res	Atoms	RSCC	RSR	B-factors(Å ²)	Q<0.9
1	LLP	A	309	24/25	0.88	0.16	49,66,71,73	0
1	LLP	B	309	24/25	0.92	0.12	42,63,67,68	0

6.3 Carbohydrates [i](#)

There are no oligosaccharides in this entry.

6.4 Ligands [i](#)

In the following table, the Atoms column lists the number of modelled atoms in the group and the number defined in the chemical component dictionary. The B-factors column lists the minimum, median, 95th percentile and maximum values of B factors of atoms in the group. The column labelled 'Q< 0.9' lists the number of atoms with occupancy less than 0.9.

Mol	Type	Chain	Res	Atoms	RSCC	RSR	B-factors(Å ²)	Q<0.9
2	SO4	B	501	5/5	0.63	0.14	121,122,123,123	0
2	SO4	A	501	5/5	0.66	0.11	140,140,140,140	0
3	PHE	B	502	12/12	0.66	0.25	143,147,176,177	0
3	PHE	A	502	12/12	0.73	0.25	147,153,183,183	0

6.5 Other polymers [i](#)

There are no such residues in this entry.