



# wwPDB X-ray Structure Validation Summary Report ⓘ

Mar 9, 2026 – 05:59 PM UTC

PDB ID : 6EEM / pdb\_00006eem  
Title : Crystal structure of Papaver somniferum tyrosine decarboxylase in complex with L-tyrosine  
Authors : Torrens-Spence, M.P.; Chiang, Y.; Smith, T.; Vicent, M.A.; Wang, Y.; Weng, J.K.  
Deposited on : 2018-08-14  
Resolution : 2.61 Å(reported)

This is a wwPDB X-ray Structure Validation Summary Report for a publicly released PDB entry.

We welcome your comments at [validation@mail.wwpdb.org](mailto:validation@mail.wwpdb.org)

A user guide is available at

<https://www.wwpdb.org/validation/2017/XrayValidationReportHelp>

with specific help available everywhere you see the ⓘ symbol.

The types of validation reports are described at

<http://www.wwpdb.org/validation/2017/FAQs#types>.

---

The following versions of software and data (see [references ⓘ](#)) were used in the production of this report:

MolProbity : 4-5-2 with Phenix2.0  
Mogul : 2022.3.0, CSD as543be (2022)  
Xtrriage (Phenix) : 2.0  
EDS : 3.0  
Buster-report : wwPDB partial adaption of 1.1.7 (2018)  
Percentile statistics : 20250101.v01 (using entries in the PDB archive January 1st 2025)  
CCP4 : 9.0.010 (Gargrove)  
Density-Fitness : 1.0.12  
Ideal geometry (proteins) : Engh & Huber (2001)  
Ideal geometry (DNA, RNA) : Parkinson et al. (1996)  
Validation Pipeline (wwPDB-VP) : 2.49

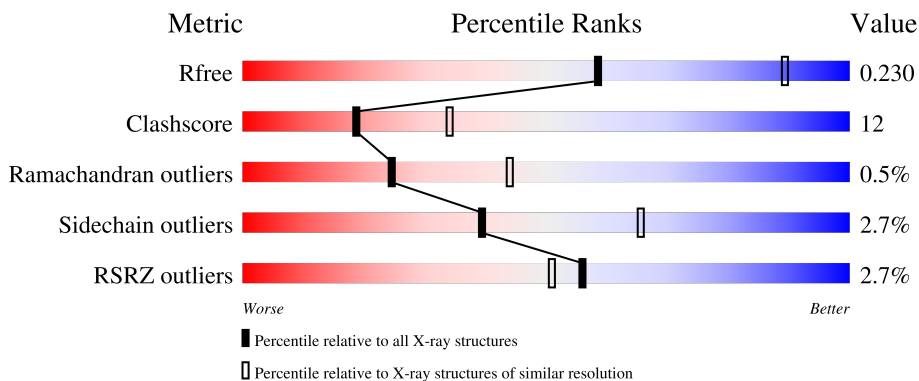
# 1 Overall quality at a glance

The following experimental techniques were used to determine the structure:

*X-RAY DIFFRACTION*

The reported resolution of this entry is 2.61 Å.

Percentile scores (ranging between 0-100) for global validation metrics of the entry are shown in the following graphic. The table shows the number of entries on which the scores are based.



Metric	Whole archive (#Entries)	Similar resolution (#Entries, resolution range(Å))
$R_{free}$	180053	4951 (2.64-2.60)
Clashscore	190562	5303 (2.64-2.60)
Ramachandran outliers	187476	5217 (2.64-2.60)
Sidechain outliers	187428	5217 (2.64-2.60)
RSRZ outliers	180081	4950 (2.64-2.60)

The table below summarises the geometric issues observed across the polymeric chains and their fit to the electron density. The red, orange, yellow and green segments of the lower bar indicate the fraction of residues that contain outliers for  $\geq 3$ , 2, 1 and 0 types of geometric quality criteria respectively. A grey segment represents the fraction of residues that are not modelled. The numeric value for each fraction is indicated below the corresponding segment, with a dot representing fractions  $\leq 5\%$ . The upper red bar (where present) indicates the fraction of residues that have poor fit to the electron density. The numeric value is given above the bar.

Mol	Chain	Length	Quality of chain
1	A	512	 2% 73% 21% • 5%
2	B	512	 3% 73% 21% • 5%

## 2 Entry composition [i](#)

There are 6 unique types of molecules in this entry. The entry contains 8012 atoms, of which 27 are hydrogens and 0 are deuteriums.

In the tables below, the ZeroOcc column contains the number of atoms modelled with zero occupancy, the AltConf column contains the number of residues with at least one atom in alternate conformation and the Trace column contains the number of residues modelled with at most 2 atoms.

- Molecule 1 is a protein called Tyrosine/dopa decarboxylase.

Mol	Chain	Residues	Atoms					ZeroOcc	AltConf	Trace
			Total	C	N	O	S			
1	A	487	3828	2450	647	707	24	0	3	0

There are 6 discrepancies between the modelled and reference sequences:

Chain	Residue	Modelled	Actual	Comment	Reference
A	45	LYS	ASN	conflict	UNP O82415
A	202	ASP	ASN	conflict	UNP O82415
A	348	PRO	ALA	conflict	UNP O82415
A	410	ILE	MET	conflict	UNP O82415
A	434	THR	ALA	conflict	UNP O82415
A	456	VAL	ALA	conflict	UNP O82415

- Molecule 2 is a protein called Tyrosine/dopa decarboxylase.

Mol	Chain	Residues	Atoms					ZeroOcc	AltConf	Trace	
			Total	C	N	O	P				S
2	B	488	3829	2452	644	708	1	24	0	1	0

There are 6 discrepancies between the modelled and reference sequences:

Chain	Residue	Modelled	Actual	Comment	Reference
B	45	LYS	ASN	conflict	UNP O82415
B	202	ASP	ASN	conflict	UNP O82415
B	348	PRO	ALA	conflict	UNP O82415
B	410	ILE	MET	conflict	UNP O82415
B	434	THR	ALA	conflict	UNP O82415
B	456	VAL	ALA	conflict	UNP O82415

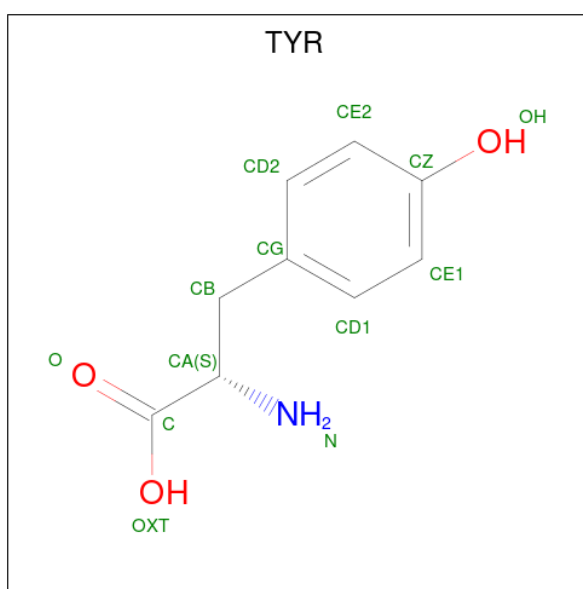
- Molecule 3 is N-({3-hydroxy-2-methyl-5-[(phosphonoxy)methyl]pyridin-4-yl)methyl)-L-tyrosine (CCD ID: 0PR) (formula: C<sub>17</sub>H<sub>21</sub>N<sub>2</sub>O<sub>8</sub>P).



Continued from previous page...

Mol	Chain	Residues	Atoms			ZeroOcc	AltConf
4	A	1	Total	O	S	0	0
			5	4	1		
4	B	1	Total	O	S	0	0
			5	4	1		
4	B	1	Total	O	S	0	0
			5	4	1		
4	B	1	Total	O	S	0	0
			5	4	1		

- Molecule 5 is TYROSINE (CCD ID: TYR) (formula: C<sub>9</sub>H<sub>11</sub>NO<sub>3</sub>).



Mol	Chain	Residues	Atoms					ZeroOcc	AltConf
5	B	1	Total	C	H	N	O	0	0
			24	9	11	1	3		

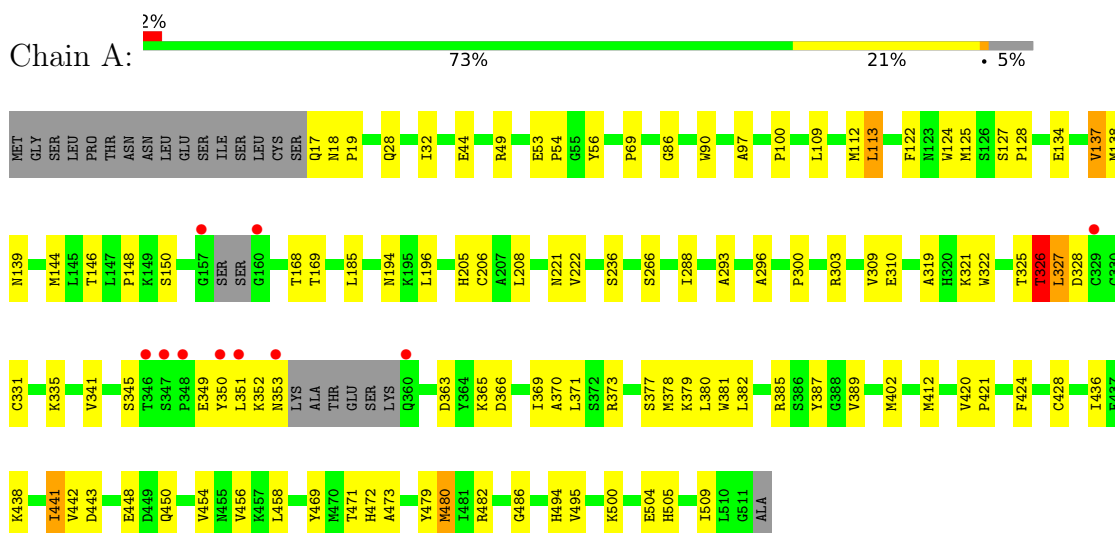
- Molecule 6 is water.

Mol	Chain	Residues	Atoms		ZeroOcc	AltConf
6	A	130	Total	O	0	0
			130	130		
6	B	122	Total	O	0	0
			122	122		

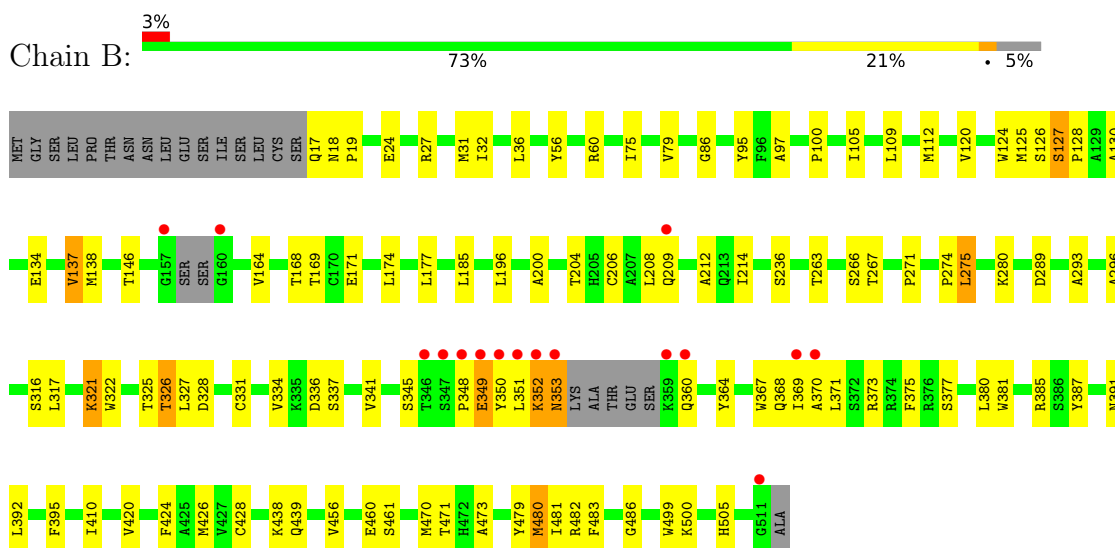
### 3 Residue-property plots [i](#)

These plots are drawn for all protein, RNA, DNA and oligosaccharide chains in the entry. The first graphic for a chain summarises the proportions of the various outlier classes displayed in the second graphic. The second graphic shows the sequence view annotated by issues in geometry and electron density. Residues are color-coded according to the number of geometric quality criteria for which they contain at least one outlier: green = 0, yellow = 1, orange = 2 and red = 3 or more. A red dot above a residue indicates a poor fit to the electron density ( $RSRZ > 2$ ). Stretches of 2 or more consecutive residues without any outlier are shown as a green connector. Residues present in the sample, but not in the model, are shown in grey.

- Molecule 1: Tyrosine/dopa decarboxylase



- Molecule 2: Tyrosine/dopa decarboxylase



## 4 Data and refinement statistics

Property	Value	Source
Space group	P 41 21 2	Depositor
Cell constants a, b, c, $\alpha$ , $\beta$ , $\gamma$	122.77Å 122.77Å 167.00Å 90.00° 90.00° 90.00°	Depositor
Resolution (Å)	77.03 – 2.61 77.03 – 2.61	Depositor EDS
% Data completeness (in resolution range)	100.0 (77.03-2.61) 100.0 (77.03-2.61)	Depositor EDS
$R_{merge}$	(Not available)	Depositor
$R_{sym}$	(Not available)	Depositor
$\langle I/\sigma(I) \rangle$ <sup>1</sup>	2.05 (at 2.62Å)	Xtrriage
Refinement program	PHENIX 1.12_2829	Depositor
R, $R_{free}$	0.187 , 0.235 0.187 , 0.230	Depositor DCC
$R_{free}$ test set	1979 reflections (5.01%)	wwPDB-VP
Wilson B-factor (Å <sup>2</sup> )	35.2	Xtrriage
Anisotropy	0.452	Xtrriage
Bulk solvent $k_{sol}$ (e/Å <sup>3</sup> ), $B_{sol}$ (Å <sup>2</sup> )	0.33 , 37.2	EDS
L-test for twinning <sup>2</sup>	$\langle  L  \rangle = 0.48$ , $\langle L^2 \rangle = 0.31$	Xtrriage
Estimated twinning fraction	No twinning to report.	Xtrriage
$F_o, F_c$ correlation	0.94	EDS
Total number of atoms	8012	wwPDB-VP
Average B, all atoms (Å <sup>2</sup> )	37.0	wwPDB-VP

Xtrriage's analysis on translational NCS is as follows: *The largest off-origin peak in the Patterson function is 3.56% of the height of the origin peak. No significant pseudotranslation is detected.*

<sup>1</sup>Intensities estimated from amplitudes.

<sup>2</sup>Theoretical values of  $\langle |L| \rangle$ ,  $\langle L^2 \rangle$  for acentric reflections are 0.5, 0.333 respectively for untwinned datasets, and 0.375, 0.2 for perfectly twinned datasets.

## 5 Model quality

### 5.1 Standard geometry

Bond lengths and bond angles in the following residue types are not validated in this section: LLP, SO4, OPR

The Z score for a bond length (or angle) is the number of standard deviations the observed value is removed from the expected value. A bond length (or angle) with  $|Z| > 5$  is considered an outlier worth inspection. RMSZ is the root-mean-square of all Z scores of the bond lengths (or angles).

Mol	Chain	Bond lengths		Bond angles	
		RMSZ	# Z  >5	RMSZ	# Z  >5
1	A	0.21	0/3915	0.39	0/5312
2	B	0.21	0/3894	0.42	0/5282
All	All	0.21	0/7809	0.41	0/10594

There are no bond length outliers.

There are no bond angle outliers.

There are no chirality outliers.

There are no planarity outliers.

### 5.2 Too-close contacts

In the following table, the Non-H and H(model) columns list the number of non-hydrogen atoms and hydrogen atoms in the chain respectively. The H(added) column lists the number of hydrogen atoms added and optimized by MolProbity. The Clashes column lists the number of clashes within the asymmetric unit, whereas Symm-Clashes lists symmetry-related clashes.

Mol	Chain	Non-H	H(model)	H(added)	Clashes	Symm-Clashes
1	A	3828	0	3808	104	0
2	B	3829	0	3809	110	0
3	A	28	16	0	2	0
4	A	20	0	0	0	0
4	B	15	0	0	0	0
5	B	13	11	8	1	0
6	A	130	0	0	3	0
6	B	122	0	0	7	0
All	All	7985	27	7625	182	0

The all-atom clashscore is defined as the number of clashes found per 1000 atoms (including hydrogen atoms). The all-atom clashscore for this structure is 12.

The worst 5 of 182 close contacts within the same asymmetric unit are listed below, sorted by their clash magnitude.

Atom-1	Atom-2	Interatomic distance (Å)	Clash overlap (Å)
2:B:349:GLU:HG2	2:B:352:LYS:CE	1.82	1.10
2:B:349:GLU:HG2	2:B:352:LYS:HE3	1.41	1.00
2:B:174:LEU:HD23	2:B:369:ILE:HD11	1.46	0.96
1:A:325:THR:O	1:A:326:THR:HB	1.68	0.93
1:A:32:ILE:HG13	2:B:109:LEU:HD22	1.51	0.92

There are no symmetry-related clashes.

## 5.3 Torsion angles [i](#)

### 5.3.1 Protein backbone [i](#)

In the following table, the Percentiles column shows the percent Ramachandran outliers of the chain as a percentile score with respect to all X-ray entries followed by that with respect to entries of similar resolution.

The Analysed column shows the number of residues for which the backbone conformation was analysed, and the total number of residues.

Mol	Chain	Analysed	Favoured	Allowed	Outliers	Percentiles	
1	A	484/512 (94%)	459 (95%)	22 (4%)	3 (1%)	21	39
2	B	482/512 (94%)	459 (95%)	21 (4%)	2 (0%)	30	49
All	All	966/1024 (94%)	918 (95%)	43 (4%)	5 (0%)	24	44

All (5) Ramachandran outliers are listed below:

Mol	Chain	Res	Type
1	A	127	SER
1	A	326	THR
1	A	486	GLY
2	B	486	GLY
2	B	127	SER

### 5.3.2 Protein sidechains [i](#)

In the following table, the Percentiles column shows the percent sidechain outliers of the chain as a percentile score with respect to all X-ray entries followed by that with respect to entries of similar resolution.

The Analysed column shows the number of residues for which the sidechain conformation was analysed, and the total number of residues.

Mol	Chain	Analysed	Rotameric	Outliers	Percentiles	
1	A	417/436 (96%)	405 (97%)	12 (3%)	37	63
2	B	415/435 (95%)	405 (98%)	10 (2%)	43	69
All	All	832/871 (96%)	810 (97%)	22 (3%)	39	66

5 of 22 residues with a non-rotameric sidechain are listed below:

Mol	Chain	Res	Type
2	B	204	THR
2	B	349	GLU
2	B	326	THR
2	B	352	LYS
1	A	326	THR

Sometimes sidechains can be flipped to improve hydrogen bonding and reduce clashes. All (4) such sidechains are listed below:

Mol	Chain	Res	Type
1	A	94	ASN
1	A	143	GLN
2	B	232	ASN
2	B	353	ASN

### 5.3.3 RNA [i](#)

There are no RNA molecules in this entry.

## 5.4 Non-standard residues in protein, DNA, RNA chains [i](#)

1 non-standard protein/DNA/RNA residue is modelled in this entry.

In the following table, the Counts columns list the number of bonds (or angles) for which Mogul statistics could be retrieved, the number of bonds (or angles) that are observed in the model and the number of bonds (or angles) that are defined in the Chemical Component Dictionary. The Link column lists molecule types, if any, to which the group is linked. The Z score for a bond length (or angle) is the number of standard deviations the observed value is removed from the expected value. A bond length (or angle) with  $|Z| > 2$  is considered an outlier worth inspection. RMSZ is the root-mean-square of all Z scores of the bond lengths (or angles).

Mol	Type	Chain	Res	Link	Bond lengths			Bond angles		
					Counts	RMSZ	# Z  > 2	Counts	RMSZ	# Z  > 2
2	LLP	B	321	2	23,24,25	2.47	6 (26%)	25,32,34	1.27	4 (16%)

In the following table, the Chirals column lists the number of chiral outliers, the number of chiral centers analysed, the number of these observed in the model and the number defined in the Chemical Component Dictionary. Similar counts are reported in the Torsion and Rings columns. '-' means no outliers of that kind were identified.

Mol	Type	Chain	Res	Link	Chirals	Torsions	Rings
2	LLP	B	321	2	-	8/16/17/19	0/1/1/1

The worst 5 of 6 bond length outliers are listed below:

Mol	Chain	Res	Type	Atoms	Z	Observed(Å)	Ideal(Å)
2	B	321	LLP	C4-C4'	7.25	1.62	1.46
2	B	321	LLP	C4'-NZ	5.10	1.44	1.27
2	B	321	LLP	C2'-C2	3.66	1.56	1.50
2	B	321	LLP	C6-N1	3.20	1.40	1.34
2	B	321	LLP	C4-C5	-3.19	1.37	1.42

All (4) bond angle outliers are listed below:

Mol	Chain	Res	Type	Atoms	Z	Observed(°)	Ideal(°)
2	B	321	LLP	CE-NZ-C4'	-2.49	110.74	118.72
2	B	321	LLP	C4-C4'-NZ	-2.48	112.62	124.04
2	B	321	LLP	C5-C6-N1	-2.41	119.91	123.83
2	B	321	LLP	C3-C4-C5	2.09	119.95	118.28

There are no chirality outliers.

5 of 8 torsion outliers are listed below:

Mol	Chain	Res	Type	Atoms
2	B	321	LLP	C4-C4'-NZ-CE
2	B	321	LLP	CG-CD-CE-NZ
2	B	321	LLP	CE-CD-CG-CB
2	B	321	LLP	CA-CB-CG-CD
2	B	321	LLP	C5'-OP4-P-OP2

There are no ring outliers.

1 monomer is involved in 5 short contacts:

Mol	Chain	Res	Type	Clashes	Symm-Clashes
2	B	321	LLP	5	0

## 5.5 Carbohydrates [i](#)

There are no oligosaccharides in this entry.

## 5.6 Ligand geometry [i](#)

9 ligands are modelled in this entry.

In the following table, the Counts columns list the number of bonds (or angles) for which Mogul statistics could be retrieved, the number of bonds (or angles) that are observed in the model and the number of bonds (or angles) that are defined in the Chemical Component Dictionary. The Link column lists molecule types, if any, to which the group is linked. The Z score for a bond length (or angle) is the number of standard deviations the observed value is removed from the expected value. A bond length (or angle) with  $|Z| > 2$  is considered an outlier worth inspection. RMSZ is the root-mean-square of all Z scores of the bond lengths (or angles).

Mol	Type	Chain	Res	Link	Bond lengths			Bond angles		
					Counts	RMSZ	# Z  > 2	Counts	RMSZ	# Z  > 2
4	SO4	A	603	-	4,4,4	0.24	0	6,6,6	0.14	0
4	SO4	A	602	-	4,4,4	0.25	0	6,6,6	0.21	0
4	SO4	A	604	-	4,4,4	0.25	0	6,6,6	0.06	0
4	SO4	B	604	-	4,4,4	0.23	0	6,6,6	0.12	0
4	SO4	B	602	-	4,4,4	0.24	0	6,6,6	0.11	0
3	OPR	A	601	-	29,29,29	1.71	6 (20%)	38,41,41	1.86	9 (23%)
5	TYR	B	601	-	12,13,13	0.73	1 (8%)	13,17,17	0.75	1 (7%)
4	SO4	A	605	-	4,4,4	0.23	0	6,6,6	0.11	0
4	SO4	B	603	-	4,4,4	0.26	0	6,6,6	0.31	0

In the following table, the Chirals column lists the number of chiral outliers, the number of chiral centers analysed, the number of these observed in the model and the number defined in the Chemical Component Dictionary. Similar counts are reported in the Torsion and Rings columns. '2' means no outliers of that kind were identified.

Mol	Type	Chain	Res	Link	Chirals	Torsions	Rings
5	TYR	B	601	-	-	0/8/8/8	0/1/1/1
3	OPR	A	601	-	-	8/19/19/19	0/2/2/2

The worst 5 of 7 bond length outliers are listed below:

Mol	Chain	Res	Type	Atoms	Z	Observed(Å)	Ideal(Å)
3	A	601	0PR	C4A-N	-4.70	1.33	1.46
3	A	601	0PR	OH-CZ	3.58	1.45	1.37
3	A	601	0PR	C4A-C4	3.18	1.56	1.52
3	A	601	0PR	O3-C3	2.97	1.43	1.36
3	A	601	0PR	CB-CA	2.48	1.60	1.54

The worst 5 of 10 bond angle outliers are listed below:

Mol	Chain	Res	Type	Atoms	Z	Observed(°)	Ideal(°)
3	A	601	0PR	C4A-N-CA	7.03	127.03	113.84
3	A	601	0PR	C4A-C4-C5	4.01	124.12	119.75
3	A	601	0PR	CG-CB-CA	3.21	121.90	113.36
5	B	601	TYR	OXT-C-O	-2.52	118.36	124.08
3	A	601	0PR	CB-CA-N	2.40	114.89	110.69

There are no chirality outliers.

5 of 8 torsion outliers are listed below:

Mol	Chain	Res	Type	Atoms
3	A	601	0PR	C5A-O4P-P-O1P
3	A	601	0PR	C5A-O4P-P-O2P
3	A	601	0PR	C5A-O4P-P-O3P
3	A	601	0PR	CB-CA-N-C4A
3	A	601	0PR	CA-CB-CG-CD1

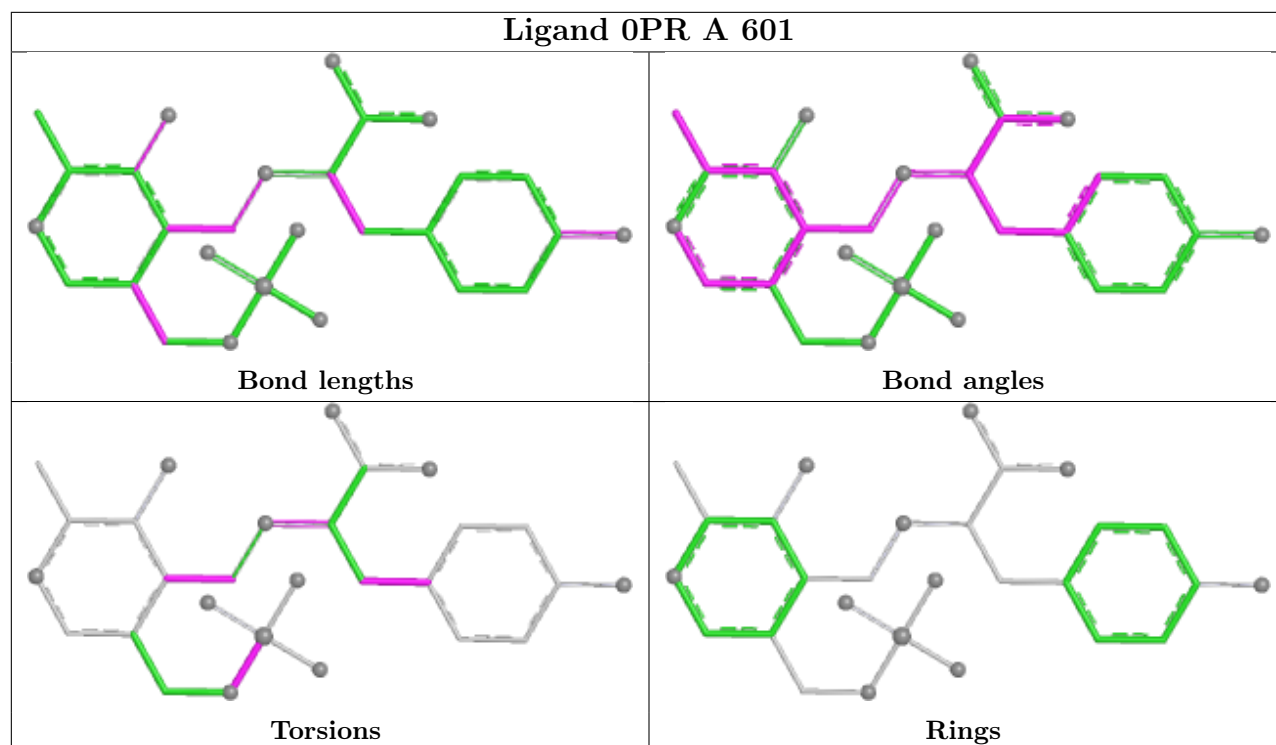
There are no ring outliers.

2 monomers are involved in 3 short contacts:

Mol	Chain	Res	Type	Clashes	Symm-Clashes
3	A	601	0PR	2	0
5	B	601	TYR	1	0

The following is a two-dimensional graphical depiction of Mogul quality analysis of bond lengths, bond angles, torsion angles, and ring geometry for all instances of the Ligand of Interest. In addition, ligands with molecular weight > 250 and outliers as shown on the validation Tables will also be included. For torsion angles, if less than 5% of the Mogul distribution of torsion angles is within 10 degrees of the torsion angle in question, then that torsion angle is considered an outlier. Any bond that is central to one or more torsion angles identified as an outlier by Mogul will be highlighted in the graph. For rings, the root-mean-square deviation (RMSD) between the ring in question and similar rings identified by Mogul is calculated over all ring torsion angles. If the average RMSD is greater than 60 degrees and the minimal RMSD between the ring in question and any Mogul-identified rings is also greater than 60 degrees, then that ring is considered an outlier. The outliers are highlighted in purple. The color gray indicates Mogul did not find sufficient

equivalents in the CSD to analyse the geometry.



## 5.7 Other polymers [i](#)

There are no such residues in this entry.

## 5.8 Polymer linkage issues [i](#)

There are no chain breaks in this entry.

## 6 Fit of model and data [i](#)

### 6.1 Protein, DNA and RNA chains [i](#)

In the following table, the column labelled ‘#RSRZ > 2’ contains the number (and percentage) of RSRZ outliers, followed by percent RSRZ outliers for the chain as percentile scores relative to all X-ray entries and entries of similar resolution. The OWAB column contains the minimum, median, 95<sup>th</sup> percentile and maximum values of the occupancy-weighted average B-factor per residue. The column labelled ‘Q < 0.9’ lists the number of (and percentage) of residues with an average occupancy less than 0.9.

Mol	Chain	Analysed	<RSRZ>	#RSRZ>2	OWAB(Å <sup>2</sup> )	Q<0.9
1	A	487/512 (95%)	-0.41	10 (2%) 63 59	15, 32, 65, 179	3 (0%)
2	B	487/512 (95%)	-0.37	16 (3%) 49 44	20, 33, 66, 146	1 (0%)
All	All	974/1024 (95%)	-0.39	26 (2%) 56 51	15, 32, 66, 179	4 (0%)

The worst 5 of 26 RSRZ outliers are listed below:

Mol	Chain	Res	Type	RSRZ
2	B	350	TYR	7.1
1	A	350	TYR	6.6
2	B	353	ASN	5.5
1	A	353	ASN	5.4
1	A	351	LEU	4.6

### 6.2 Non-standard residues in protein, DNA, RNA chains [i](#)

In the following table, the Atoms column lists the number of modelled atoms in the group and the number defined in the chemical component dictionary. The B-factors column lists the minimum, median, 95<sup>th</sup> percentile and maximum values of B factors of atoms in the group. The column labelled ‘Q < 0.9’ lists the number of atoms with occupancy less than 0.9.

Mol	Type	Chain	Res	Atoms	RSCC	RSR	B-factors(Å <sup>2</sup> )	Q<0.9
2	LLP	B	321	24/25	0.95	0.09	24,41,50,53	0

### 6.3 Carbohydrates [i](#)

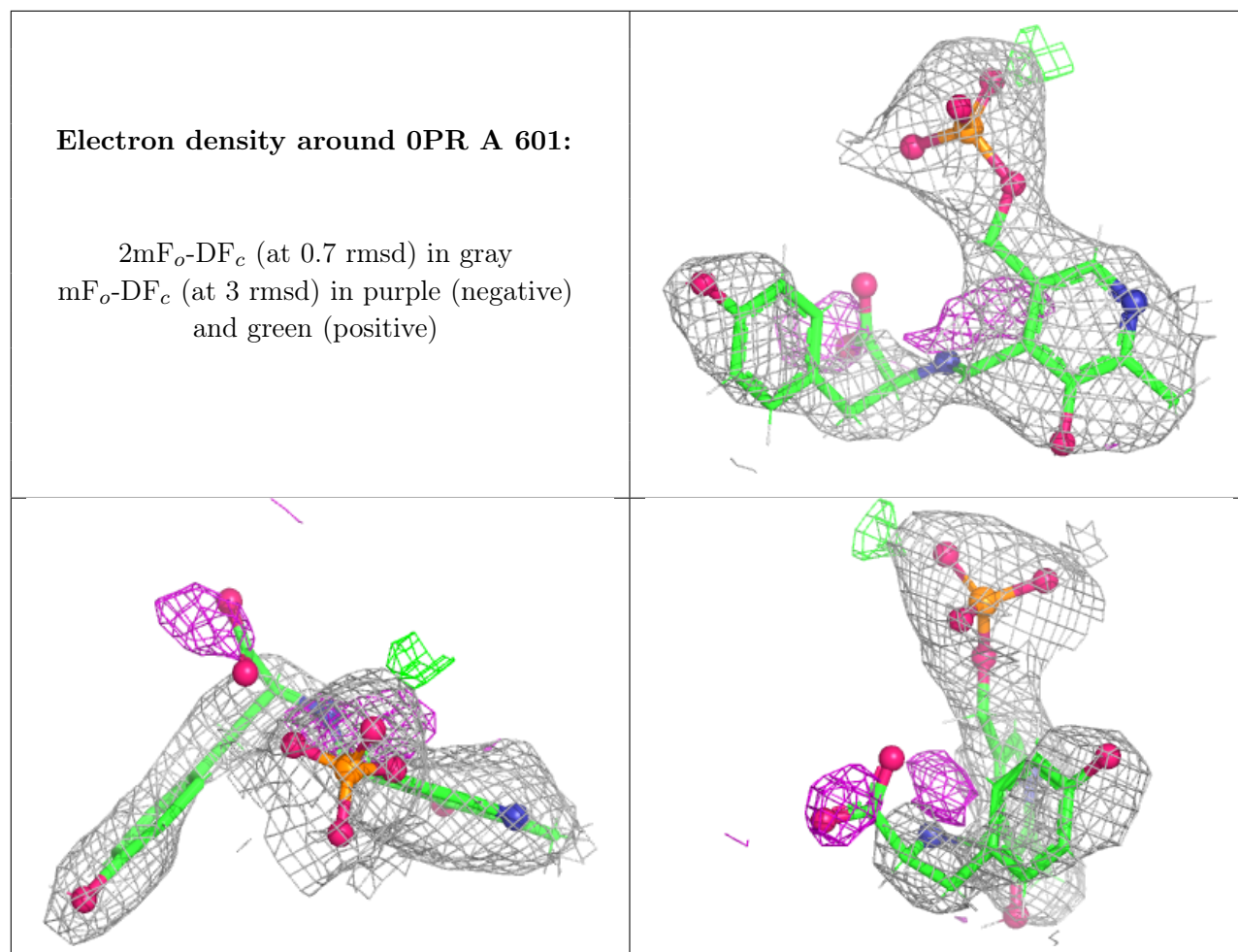
There are no oligosaccharides in this entry.

## 6.4 Ligands

In the following table, the Atoms column lists the number of modelled atoms in the group and the number defined in the chemical component dictionary. The B-factors column lists the minimum, median, 95<sup>th</sup> percentile and maximum values of B factors of atoms in the group. The column labelled 'Q<0.9' lists the number of atoms with occupancy less than 0.9.

Mol	Type	Chain	Res	Atoms	RSCC	RSR	B-factors(Å <sup>2</sup> )	Q<0.9
4	SO4	B	604	5/5	0.76	0.22	110,111,113,115	0
4	SO4	A	604	5/5	0.81	0.22	108,110,110,114	0
4	SO4	A	602	5/5	0.85	0.15	82,87,87,89	0
5	TYR	B	601	13/13	0.87	0.21	114,120,142,147	0
3	OPR	A	601	28/28	0.90	0.18	53,81,112,116	0
4	SO4	A	605	5/5	0.91	0.14	117,119,120,123	0
4	SO4	B	602	5/5	0.91	0.10	69,71,79,81	0
4	SO4	A	603	5/5	0.93	0.09	58,59,64,73	0
4	SO4	B	603	5/5	0.95	0.11	39,40,46,47	0

The following is a graphical depiction of the model fit to experimental electron density of all instances of the Ligand of Interest. In addition, ligands with molecular weight > 250 and outliers as shown on the geometry validation Tables will also be included. Each fit is shown from different orientation to approximate a three-dimensional view.



## 6.5 Other polymers [i](#)

There are no such residues in this entry.