



Full wwPDB X-ray Structure Validation Report

Mar 6, 2026 – 09:09 PM UTC

PDB ID : 2EI9 / pdb_00002ei9
Title : Crystal structure of R1Bm endonuclease domain
Authors : Maita, N.; Aoyagi, H.; Osanai, M.; Shirakawa, M.; Fujiwara, H.
Deposited on : 2007-03-12
Resolution : 2.00 Å(reported)

This is a Full wwPDB X-ray Structure Validation Report for a publicly released PDB entry.

We welcome your comments at validation@mail.wwpdb.org

A user guide is available at

<https://www.wwpdb.org/validation/2017/XrayValidationReportHelp>

with specific help available everywhere you see the  symbol.

The types of validation reports are described at

<http://www.wwpdb.org/validation/2017/FAQs#types>.

The following versions of software and data (see [references](#) ) were used in the production of this report:

MolProbity : 4-5-2 with Phenix2.0
Mogul : 2022.3.0, CSD as543be (2022)
Xtriage (Phenix) : 2.0
EDS : 3.0
Percentile statistics : 20250101.v01 (using entries in the PDB archive January 1st 2025)
CCP4 : 9.0.010 (Gargrove)
Density-Fitness : 1.0.12
Ideal geometry (proteins) : Engh & Huber (2001)
Ideal geometry (DNA, RNA) : Parkinson et al. (1996)
Validation Pipeline (wwPDB-VP) : 2.49

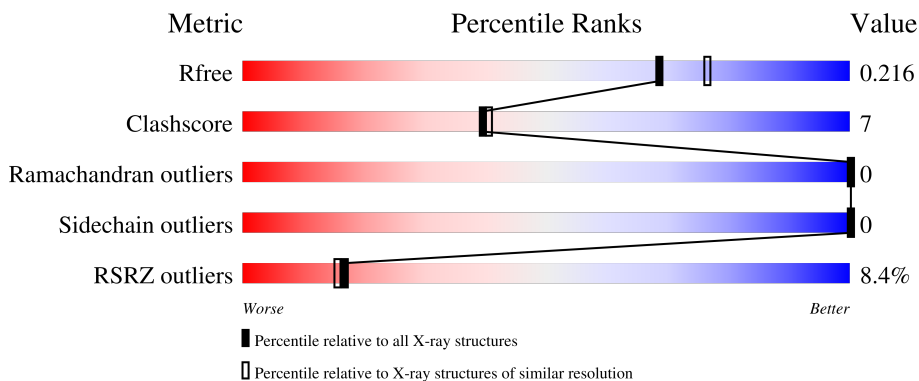
1 Overall quality at a glance

The following experimental techniques were used to determine the structure:

X-RAY DIFFRACTION

The reported resolution of this entry is 2.00 Å.

Percentile scores (ranging between 0-100) for global validation metrics of the entry are shown in the following graphic. The table shows the number of entries on which the scores are based.



Metric	Whole archive (#Entries)	Similar resolution (#Entries, resolution range(Å))
R_{free}	180053	10052 (2.00-2.00)
Clashscore	190562	11152 (2.00-2.00)
Ramachandran outliers	187476	11031 (2.00-2.00)
Sidechain outliers	187428	11029 (2.00-2.00)
RSRZ outliers	180081	10067 (2.00-2.00)

The table below summarises the geometric issues observed across the polymeric chains and their fit to the electron density. The red, orange, yellow and green segments of the lower bar indicate the fraction of residues that contain outliers for ≥ 3 , 2, 1 and 0 types of geometric quality criteria respectively. A grey segment represents the fraction of residues that are not modelled. The numeric value for each fraction is indicated below the corresponding segment, with a dot representing fractions $\leq 5\%$. The upper red bar (where present) indicates the fraction of residues that have poor fit to the electron density. The numeric value is given above the bar.

Mol	Chain	Length	Quality of chain
1	A	240	 8% 76% 13% 11%

2 Entry composition [i](#)

There are 3 unique types of molecules in this entry. The entry contains 1788 atoms, of which 0 are hydrogens and 0 are deuteriums.

In the tables below, the ZeroOcc column contains the number of atoms modelled with zero occupancy, the AltConf column contains the number of residues with at least one atom in alternate conformation and the Trace column contains the number of residues modelled with at most 2 atoms.

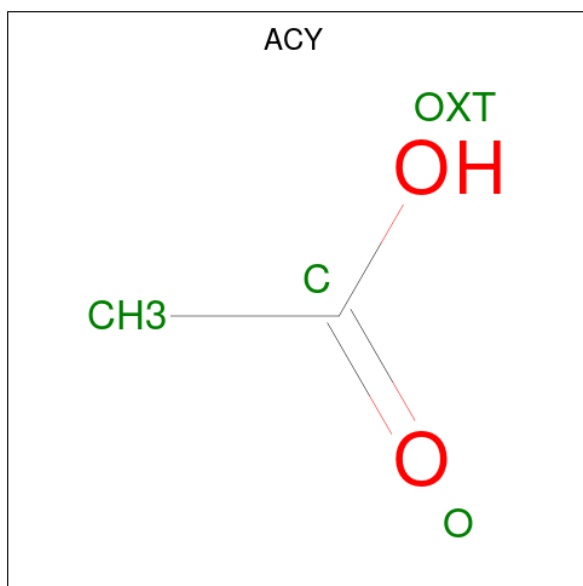
- Molecule 1 is a protein called Non-LTR retrotransposon R1Bmks ORF2 protein.

Mol	Chain	Residues	Atoms					ZeroOcc	AltConf	Trace
			Total	C	N	O	S			
1	A	214	1659	1042	310	301	6	0	0	0

There is a discrepancy between the modelled and reference sequences:

Chain	Residue	Modelled	Actual	Comment	Reference
A	4	HIS	-	expression tag	UNP Q5NTZ0

- Molecule 2 is ACETIC ACID (CCD ID: ACY) (formula: C₂H₄O₂).



Mol	Chain	Residues	Atoms			ZeroOcc	AltConf
			Total	C	O		
2	A	1	4	2	2	0	0

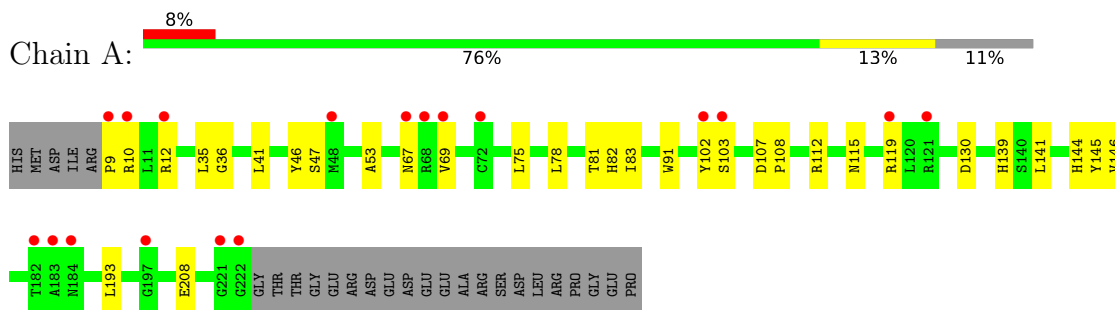
- Molecule 3 is water.

Mol	Chain	Residues	Atoms		ZeroOcc	AltConf
3	A	125	Total 125	O 125	0	0

3 Residue-property plots [i](#)

These plots are drawn for all protein, RNA, DNA and oligosaccharide chains in the entry. The first graphic for a chain summarises the proportions of the various outlier classes displayed in the second graphic. The second graphic shows the sequence view annotated by issues in geometry and electron density. Residues are color-coded according to the number of geometric quality criteria for which they contain at least one outlier: green = 0, yellow = 1, orange = 2 and red = 3 or more. A red dot above a residue indicates a poor fit to the electron density ($RSRZ > 2$). Stretches of 2 or more consecutive residues without any outlier are shown as a green connector. Residues present in the sample, but not in the model, are shown in grey.

- Molecule 1: Non-LTR retrotransposon R1Bmks ORF2 protein



4 Data and refinement statistics i

Property	Value	Source
Space group	P 3 2 1	Depositor
Cell constants a, b, c, α , β , γ	141.30Å 141.30Å 37.51Å 90.00° 90.00° 120.00°	Depositor
Resolution (Å)	40.00 – 2.00 40.00 – 2.00	Depositor EDS
% Data completeness (in resolution range)	100.0 (40.00-2.00) 99.9 (40.00-2.00)	Depositor EDS
R_{merge}	0.09	Depositor
R_{sym}	0.09	Depositor
$\langle I/\sigma(I) \rangle$ ¹	7.35 (at 2.00Å)	Xtrriage
Refinement program	CNS 1.1	Depositor
R, R_{free}	0.195 , 0.211 0.196 , 0.216	Depositor DCC
R_{free} test set	1432 reflections (4.90%)	wwPDB-VP
Wilson B-factor (Å ²)	21.5	Xtrriage
Anisotropy	0.265	Xtrriage
Bulk solvent k_{sol} (e/Å ³), B_{sol} (Å ²)	0.38 , 38.3	EDS
L-test for twinning ²	$\langle L \rangle = 0.49$, $\langle L^2 \rangle = 0.32$	Xtrriage
Estimated twinning fraction	0.034 for -h,-k,l	Xtrriage
F_o, F_c correlation	0.95	EDS
Total number of atoms	1788	wwPDB-VP
Average B, all atoms (Å ²)	23.0	wwPDB-VP

Xtrriage's analysis on translational NCS is as follows: *The largest off-origin peak in the Patterson function is 4.93% of the height of the origin peak. No significant pseudotranslation is detected.*

¹Intensities estimated from amplitudes.

²Theoretical values of $\langle |L| \rangle$, $\langle L^2 \rangle$ for acentric reflections are 0.5, 0.333 respectively for untwinned datasets, and 0.375, 0.2 for perfectly twinned datasets.

5 Model quality [i](#)

5.1 Standard geometry [i](#)

Bond lengths and bond angles in the following residue types are not validated in this section: ACY

The Z score for a bond length (or angle) is the number of standard deviations the observed value is removed from the expected value. A bond length (or angle) with $|Z| > 5$ is considered an outlier worth inspection. RMSZ is the root-mean-square of all Z scores of the bond lengths (or angles).

Mol	Chain	Bond lengths		Bond angles	
		RMSZ	# Z >5	RMSZ	# Z >5
1	A	0.33	0/1697	0.88	6/2308 (0.3%)

There are no bond length outliers.

All (6) bond angle outliers are listed below:

Mol	Chain	Res	Type	Atoms	Z	Observed(°)	Ideal(°)
1	A	139	HIS	N-CA-C	6.98	121.10	112.58
1	A	46	TYR	N-CA-C	-6.95	95.76	107.99
1	A	9	PRO	N-CA-CB	6.33	109.96	103.00
1	A	47	SER	N-CA-C	6.31	120.08	112.38
1	A	53	ALA	N-CA-C	-5.19	100.71	108.96
1	A	130	ASP	N-CA-C	-5.06	98.34	107.75

There are no chirality outliers.

There are no planarity outliers.

5.2 Too-close contacts [i](#)

In the following table, the Non-H and H(model) columns list the number of non-hydrogen atoms and hydrogen atoms in the chain respectively. The H(added) column lists the number of hydrogen atoms added and optimized by MolProbity. The Clashes column lists the number of clashes within the asymmetric unit, whereas Symm-Clashes lists symmetry-related clashes.

Mol	Chain	Non-H	H(model)	H(added)	Clashes	Symm-Clashes
1	A	1659	0	1623	22	0
2	A	4	0	3	0	0
3	A	125	0	0	1	0
All	All	1788	0	1626	22	0

The all-atom clashscore is defined as the number of clashes found per 1000 atoms (including hydrogen atoms). The all-atom clashscore for this structure is 7.

All (22) close contacts within the same asymmetric unit are listed below, sorted by their clash magnitude.

Atom-1	Atom-2	Interatomic distance (Å)	Clash overlap (Å)
1:A:67:ASN:OD1	1:A:69:VAL:HG22	1.99	0.62
1:A:12:ARG:HD3	1:A:36:GLY:O	2.03	0.59
1:A:141:LEU:H	1:A:144:HIS:CD2	2.23	0.57
1:A:35:LEU:HD21	1:A:208:GLU:HG3	1.86	0.57
1:A:67:ASN:CG	1:A:69:VAL:HG22	2.34	0.53
1:A:67:ASN:HD21	1:A:69:VAL:CG2	2.23	0.52
1:A:78:LEU:HD21	1:A:119:ARG:HD3	1.91	0.52
1:A:67:ASN:ND2	1:A:69:VAL:HG22	2.26	0.50
1:A:145:TYR:CD1	1:A:146:VAL:HG23	2.47	0.50
1:A:107:ASP:HB2	1:A:108:PRO:HD3	1.92	0.50
1:A:83:ILE:HD12	1:A:112:ARG:HD2	1.95	0.49
1:A:41:LEU:N	1:A:41:LEU:HD12	2.27	0.49
1:A:67:ASN:HB3	3:A:561:HOH:O	2.12	0.48
1:A:81:THR:OG1	1:A:82:HIS:HD2	1.97	0.47
1:A:193:LEU:N	1:A:193:LEU:HD12	2.30	0.47
1:A:75:LEU:HD12	1:A:78:LEU:HD12	1.98	0.46
1:A:10:ARG:HA	1:A:91:TRP:CZ3	2.51	0.45
1:A:10:ARG:HA	1:A:91:TRP:HZ3	1.82	0.45
1:A:67:ASN:HD21	1:A:69:VAL:HG22	1.82	0.44
1:A:102:TYR:O	1:A:103:SER:OG	2.29	0.43
1:A:115:ASN:O	1:A:119:ARG:HG3	2.20	0.42
1:A:78:LEU:CD2	1:A:119:ARG:HD3	2.50	0.41

There are no symmetry-related clashes.

5.3 Torsion angles

5.3.1 Protein backbone

In the following table, the Percentiles column shows the percent Ramachandran outliers of the chain as a percentile score with respect to all X-ray entries followed by that with respect to entries of similar resolution.

The Analysed column shows the number of residues for which the backbone conformation was analysed, and the total number of residues.

Mol	Chain	Analysed	Favoured	Allowed	Outliers	Percentiles	
1	A	212/240 (88%)	206 (97%)	6 (3%)	0	100	100

There are no Ramachandran outliers to report.

5.3.2 Protein sidechains [i](#)

In the following table, the Percentiles column shows the percent sidechain outliers of the chain as a percentile score with respect to all X-ray entries followed by that with respect to entries of similar resolution.

The Analysed column shows the number of residues for which the sidechain conformation was analysed, and the total number of residues.

Mol	Chain	Analysed	Rotameric	Outliers	Percentiles	
1	A	175/200 (88%)	175 (100%)	0	100	100

There are no protein residues with a non-rotameric sidechain to report.

Sometimes sidechains can be flipped to improve hydrogen bonding and reduce clashes. All (8) such sidechains are listed below:

Mol	Chain	Res	Type
1	A	15	GLN
1	A	58	HIS
1	A	67	ASN
1	A	82	HIS
1	A	87	HIS
1	A	101	GLN
1	A	144	HIS
1	A	150	GLN

5.3.3 RNA [i](#)

There are no RNA molecules in this entry.

5.4 Non-standard residues in protein, DNA, RNA chains [i](#)

There are no non-standard protein/DNA/RNA residues in this entry.

5.5 Carbohydrates [i](#)

There are no oligosaccharides in this entry.

5.6 Ligand geometry [i](#)

1 ligand is modelled in this entry.

In the following table, the Counts columns list the number of bonds (or angles) for which Mogul statistics could be retrieved, the number of bonds (or angles) that are observed in the model and the number of bonds (or angles) that are defined in the Chemical Component Dictionary. The Link column lists molecule types, if any, to which the group is linked. The Z score for a bond length (or angle) is the number of standard deviations the observed value is removed from the expected value. A bond length (or angle) with $|Z| > 2$ is considered an outlier worth inspection. RMSZ is the root-mean-square of all Z scores of the bond lengths (or angles).

Mol	Type	Chain	Res	Link	Bond lengths			Bond angles		
					Counts	RMSZ	$\# Z > 2$	Counts	RMSZ	$\# Z > 2$
2	ACY	A	501	-	3,3,3	1.53	0	3,3,3	1.38	0

There are no bond length outliers.

There are no bond angle outliers.

There are no chirality outliers.

There are no torsion outliers.

There are no ring outliers.

No monomer is involved in short contacts.

5.7 Other polymers [i](#)

There are no such residues in this entry.

5.8 Polymer linkage issues [i](#)

There are no chain breaks in this entry.

6 Fit of model and data [i](#)

6.1 Protein, DNA and RNA chains [i](#)

In the following table, the column labelled ‘#RSRZ > 2’ contains the number (and percentage) of RSRZ outliers, followed by percent RSRZ outliers for the chain as percentile scores relative to all X-ray entries and entries of similar resolution. The OWAB column contains the minimum, median, 95th percentile and maximum values of the occupancy-weighted average B-factor per residue. The column labelled ‘Q < 0.9’ lists the number of (and percentage) of residues with an average occupancy less than 0.9.

Mol	Chain	Analysed	<RSRZ>	#RSRZ>2	OWAB(Å ²)	Q<0.9
1	A	214/240 (89%)	0.20	18 (8%) 17 15	12, 21, 40, 53	0

All (18) RSRZ outliers are listed below:

Mol	Chain	Res	Type	RSRZ
1	A	9	PRO	6.2
1	A	222	GLY	5.2
1	A	183	ALA	4.6
1	A	197	GLY	3.7
1	A	103	SER	3.6
1	A	102	TYR	3.5
1	A	10	ARG	3.4
1	A	69	VAL	3.2
1	A	184	ASN	3.2
1	A	67	ASN	3.0
1	A	48	MET	3.0
1	A	221	GLY	3.0
1	A	68	ARG	2.8
1	A	119	ARG	2.8
1	A	182	THR	2.6
1	A	72	CYS	2.4
1	A	121	ARG	2.4
1	A	12	ARG	2.3

6.2 Non-standard residues in protein, DNA, RNA chains [i](#)

There are no non-standard protein/DNA/RNA residues in this entry.

6.3 Carbohydrates [i](#)

There are no oligosaccharides in this entry.

6.4 Ligands [i](#)

In the following table, the Atoms column lists the number of modelled atoms in the group and the number defined in the chemical component dictionary. The B-factors column lists the minimum, median, 95th percentile and maximum values of B factors of atoms in the group. The column labelled 'Q< 0.9' lists the number of atoms with occupancy less than 0.9.

Mol	Type	Chain	Res	Atoms	RSCC	RSR	B-factors(Å ²)	Q<0.9
2	ACY	A	501	4/4	0.96	0.07	19,19,20,22	0

6.5 Other polymers [i](#)

There are no such residues in this entry.