



# wwPDB X-ray Structure Validation Summary Report ⓘ

Mar 8, 2026 – 01:45 PM UTC

PDB ID : 8EI6 / pdb\_00008ei6  
Title : Crystal structure of the WWP2 HECT domain in complex with H305, a Helicon Polypeptide  
Authors : Li, K.; Tokareva, O.S.; Thomson, T.M.; Verdine, G.L.; McGee, J.H.  
Deposited on : 2022-09-14  
Resolution : 3.62 Å (reported)

This is a wwPDB X-ray Structure Validation Summary Report for a publicly released PDB entry.

We welcome your comments at [validation@mail.wwpdb.org](mailto:validation@mail.wwpdb.org)

A user guide is available at

<https://www.wwpdb.org/validation/2017/XrayValidationReportHelp>

with specific help available everywhere you see the ⓘ symbol.

The types of validation reports are described at

<http://www.wwpdb.org/validation/2017/FAQs#types>.

---

The following versions of software and data (see [references ⓘ](#)) were used in the production of this report:

MolProbity : 4-5-2 with Phenix2.0  
Mogul : 2022.3.0, CSD as543be (2022)  
Xtriage (Phenix) : 2.0  
EDS : 3.0  
Percentile statistics : 20250101.v01 (using entries in the PDB archive January 1st 2025)  
CCP4 : 9.0.010 (Gargrove)  
Density-Fitness : 1.0.12  
Ideal geometry (proteins) : Engh & Huber (2001)  
Ideal geometry (DNA, RNA) : Parkinson et al. (1996)  
Validation Pipeline (wwPDB-VP) : 2.49

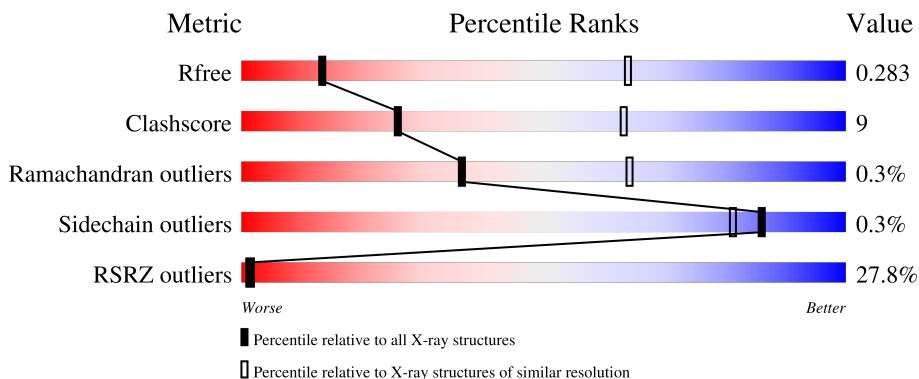
# 1 Overall quality at a glance

The following experimental techniques were used to determine the structure:

*X-RAY DIFFRACTION*

The reported resolution of this entry is 3.62 Å.

Percentile scores (ranging between 0-100) for global validation metrics of the entry are shown in the following graphic. The table shows the number of entries on which the scores are based.



Metric	Whole archive (#Entries)	Similar resolution (#Entries, resolution range(Å))
$R_{free}$	180053	1062 (3.72-3.52)
Clashscore	190562	1092 (3.72-3.52)
Ramachandran outliers	187476	1057 (3.72-3.52)
Sidechain outliers	187428	1055 (3.72-3.52)
RSRZ outliers	180081	1060 (3.72-3.52)

The table below summarises the geometric issues observed across the polymeric chains and their fit to the electron density. The red, orange, yellow and green segments of the lower bar indicate the fraction of residues that contain outliers for  $\geq 3$ , 2, 1 and 0 types of geometric quality criteria respectively. A grey segment represents the fraction of residues that are not modelled. The numeric value for each fraction is indicated below the corresponding segment, with a dot representing fractions  $\leq 5\%$ . The upper red bar (where present) indicates the fraction of residues that have poor fit to the electron density. The numeric value is given above the bar.

Mol	Chain	Length	Quality of chain
1	A	376	
1	B	376	
2	C	19	
2	D	19	

The following table lists non-polymeric compounds, carbohydrate monomers and non-standard

residues in protein, DNA, RNA chains that are outliers for geometric or electron-density-fit criteria:

Mol	Type	Chain	Res	Chirality	Geometry	Clashes	Electron density
3	WHL	D	101	-	X	-	-

## 2 Entry composition

There are 3 unique types of molecules in this entry. The entry contains 6492 atoms, of which 0 are hydrogens and 0 are deuteriums.

In the tables below, the ZeroOcc column contains the number of atoms modelled with zero occupancy, the AltConf column contains the number of residues with at least one atom in alternate conformation and the Trace column contains the number of residues modelled with at most 2 atoms.

- Molecule 1 is a protein called NEDD4-like E3 ubiquitin-protein ligase WWP2.

Mol	Chain	Residues	Atoms					ZeroOcc	AltConf	Trace
			Total	C	N	O	S			
1	A	367	3115	2012	524	560	19	0	2	0
1	B	367	3115	2012	524	560	19	0	2	0

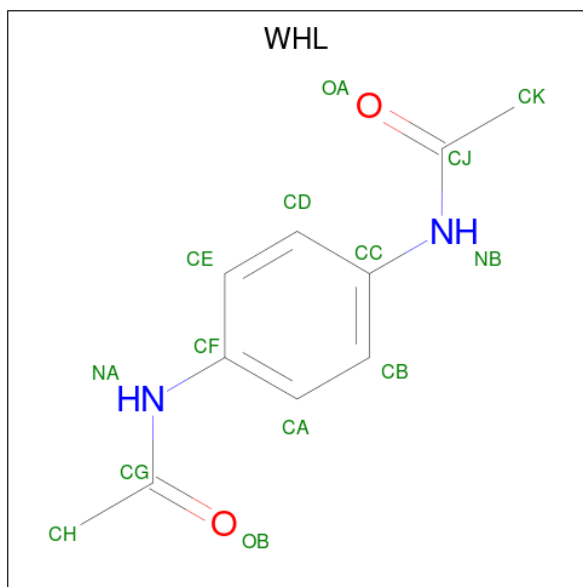
There are 4 discrepancies between the modelled and reference sequences:

Chain	Residue	Modelled	Actual	Comment	Reference
A	490	GLY	-	expression tag	UNP O00308
A	491	PRO	-	expression tag	UNP O00308
B	490	GLY	-	expression tag	UNP O00308
B	491	PRO	-	expression tag	UNP O00308

- Molecule 2 is a protein called H305.

Mol	Chain	Residues	Atoms					ZeroOcc	AltConf	Trace
			Total	C	N	O	S			
2	C	16	117	74	19	21	3	0	0	0
2	D	16	117	74	19	21	3	0	0	0

- Molecule 3 is N,N'-(1,4-phenylene)diacetamide (CCD ID: WHL) (formula: C<sub>10</sub>H<sub>12</sub>N<sub>2</sub>O<sub>2</sub>).



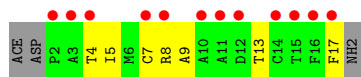
Mol	Chain	Residues	Atoms				ZeroOcc	AltConf
			Total	C	N	O		
3	C	1	Total	C	N	O	0	0
			14	10	2	2		
3	D	1	Total	C	N	O	0	0
			14	10	2	2		



## ● Molecule 2: H305



## ● Molecule 2: H305



## 4 Data and refinement statistics

Property	Value	Source
Space group	P 21 21 21	Depositor
Cell constants a, b, c, $\alpha$ , $\beta$ , $\gamma$	67.62Å 71.32Å 211.57Å 90.00° 90.00° 90.00°	Depositor
Resolution (Å)	49.07 – 3.62 49.07 – 3.62	Depositor EDS
% Data completeness (in resolution range)	76.9 (49.07-3.62) 76.9 (49.07-3.62)	Depositor EDS
$R_{merge}$	0.19	Depositor
$R_{sym}$	(Not available)	Depositor
$\langle I/\sigma(I) \rangle$ <sup>1</sup>	8.92 (at 3.67Å)	Xtrriage
Refinement program	PHENIX 1.18.2_3874	Depositor
R, $R_{free}$	0.259 , 0.281 0.266 , 0.283	Depositor DCC
$R_{free}$ test set	958 reflections (7.82%)	wwPDB-VP
Wilson B-factor (Å <sup>2</sup> )	-13.4	Xtrriage
Anisotropy	-0.850	Xtrriage
Bulk solvent $k_{sol}$ (e/Å <sup>3</sup> ), $B_{sol}$ (Å <sup>2</sup> )	0.33 , 68.0	EDS
L-test for twinning <sup>2</sup>	$\langle  L  \rangle = 0.46$ , $\langle L^2 \rangle = 0.29$	Xtrriage
Estimated twinning fraction	No twinning to report.	Xtrriage
$F_o, F_c$ correlation	0.85	EDS
Total number of atoms	6492	wwPDB-VP
Average B, all atoms (Å <sup>2</sup> )	78.0	wwPDB-VP

Xtrriage's analysis on translational NCS is as follows: *The largest off-origin peak in the Patterson function is 3.87% of the height of the origin peak. No significant pseudotranslation is detected.*

<sup>1</sup>Intensities estimated from amplitudes.

<sup>2</sup>Theoretical values of  $\langle |L| \rangle$ ,  $\langle L^2 \rangle$  for acentric reflections are 0.5, 0.333 respectively for untwinned datasets, and 0.375, 0.2 for perfectly twinned datasets.

## 5 Model quality [i](#)

### 5.1 Standard geometry [i](#)

Bond lengths and bond angles in the following residue types are not validated in this section: WHL

The Z score for a bond length (or angle) is the number of standard deviations the observed value is removed from the expected value. A bond length (or angle) with  $|Z| > 5$  is considered an outlier worth inspection. RMSZ is the root-mean-square of all Z scores of the bond lengths (or angles).

Mol	Chain	Bond lengths		Bond angles	
		RMSZ	# Z  >5	RMSZ	# Z  >5
1	A	0.20	0/3198	0.53	0/4312
1	B	0.20	0/3198	0.50	0/4312
2	C	0.25	0/119	0.51	0/160
2	D	0.34	0/119	0.56	0/160
All	All	0.21	0/6634	0.52	0/8944

There are no bond length outliers.

There are no bond angle outliers.

There are no chirality outliers.

There are no planarity outliers.

### 5.2 Too-close contacts [i](#)

In the following table, the Non-H and H(model) columns list the number of non-hydrogen atoms and hydrogen atoms in the chain respectively. The H(added) column lists the number of hydrogen atoms added and optimized by MolProbity. The Clashes column lists the number of clashes within the asymmetric unit, whereas Symm-Clashes lists symmetry-related clashes.

Mol	Chain	Non-H	H(model)	H(added)	Clashes	Symm-Clashes
1	A	3115	0	3044	63	0
1	B	3115	0	3044	54	0
2	C	117	0	111	10	0
2	D	117	0	111	9	0
3	C	14	0	0	0	0
3	D	14	0	0	0	0
All	All	6492	0	6310	121	0

The all-atom clashscore is defined as the number of clashes found per 1000 atoms (including hydrogen atoms). The all-atom clashscore for this structure is 9.

The worst 5 of 121 close contacts within the same asymmetric unit are listed below, sorted by their clash magnitude.

Atom-1	Atom-2	Interatomic distance (Å)	Clash overlap (Å)
1:B:675:ASP:HB3	1:B:684:THR:HA	1.67	0.76
1:A:499:TYR:HD2	2:C:13:THR:HG22	1.55	0.71
1:B:687:LEU:HD22	1:B:707:LEU:HB3	1.71	0.70
1:A:541:ARG:NH1	1:B:538:TYR:OH	2.25	0.70
1:A:503:ARG:NH1	1:A:617:TYR:O	2.26	0.68

There are no symmetry-related clashes.

## 5.3 Torsion angles [i](#)

### 5.3.1 Protein backbone [i](#)

In the following table, the Percentiles column shows the percent Ramachandran outliers of the chain as a percentile score with respect to all X-ray entries followed by that with respect to entries of similar resolution.

The Analysed column shows the number of residues for which the backbone conformation was analysed, and the total number of residues.

Mol	Chain	Analysed	Favoured	Allowed	Outliers	Percentiles	
1	A	365/376 (97%)	338 (93%)	27 (7%)	0	100	100
1	B	365/376 (97%)	338 (93%)	27 (7%)	0	100	100
2	C	14/19 (74%)	10 (71%)	3 (21%)	1 (7%)	1	9
2	D	14/19 (74%)	10 (71%)	3 (21%)	1 (7%)	1	9
All	All	758/790 (96%)	696 (92%)	60 (8%)	2 (0%)	36	64

All (2) Ramachandran outliers are listed below:

Mol	Chain	Res	Type
2	D	8	ARG
2	C	8	ARG

### 5.3.2 Protein sidechains [i](#)

In the following table, the Percentiles column shows the percent sidechain outliers of the chain as a percentile score with respect to all X-ray entries followed by that with respect to entries of similar resolution.

The Analysed column shows the number of residues for which the sidechain conformation was analysed, and the total number of residues.

Mol	Chain	Analysed	Rotameric	Outliers	Percentiles	
1	A	339/344 (98%)	337 (99%)	2 (1%)	78	77
1	B	339/344 (98%)	337 (99%)	2 (1%)	78	77
2	C	12/13 (92%)	12 (100%)	0	100	100
2	D	12/13 (92%)	12 (100%)	0	100	100
All	All	702/714 (98%)	698 (99%)	4 (1%)	86	77

All (4) residues with a non-rotameric sidechain are listed below:

Mol	Chain	Res	Type
1	A	616[A]	LEU
1	A	616[B]	LEU
1	B	616[A]	LEU
1	B	616[B]	LEU

Sometimes sidechains can be flipped to improve hydrogen bonding and reduce clashes. All (3) such sidechains are listed below:

Mol	Chain	Res	Type
1	A	500	HIS
1	A	585	ASN
1	B	500	HIS

### 5.3.3 RNA [i](#)

There are no RNA molecules in this entry.

### 5.4 Non-standard residues in protein, DNA, RNA chains [i](#)

There are no non-standard protein/DNA/RNA residues in this entry.

### 5.5 Carbohydrates [i](#)

There are no oligosaccharides in this entry.

## 5.6 Ligand geometry

2 ligands are modelled in this entry.

In the following table, the Counts columns list the number of bonds (or angles) for which Mogul statistics could be retrieved, the number of bonds (or angles) that are observed in the model and the number of bonds (or angles) that are defined in the Chemical Component Dictionary. The Link column lists molecule types, if any, to which the group is linked. The Z score for a bond length (or angle) is the number of standard deviations the observed value is removed from the expected value. A bond length (or angle) with  $|Z| > 2$  is considered an outlier worth inspection. RMSZ is the root-mean-square of all Z scores of the bond lengths (or angles).

Mol	Type	Chain	Res	Link	Bond lengths			Bond angles		
					Counts	RMSZ	# Z  > 2	Counts	RMSZ	# Z  > 2
3	WHL	D	101	2	14,14,14	2.98	7 (50%)	18,18,18	3.59	10 (55%)
3	WHL	C	101	2	14,14,14	2.39	5 (35%)	18,18,18	2.08	5 (27%)

In the following table, the Chirals column lists the number of chiral outliers, the number of chiral centers analysed, the number of these observed in the model and the number defined in the Chemical Component Dictionary. Similar counts are reported in the Torsion and Rings columns. '-' means no outliers of that kind were identified.

Mol	Type	Chain	Res	Link	Chirals	Torsions	Rings
3	WHL	D	101	2	-	4/8/8/8	0/1/1/1
3	WHL	C	101	2	-	4/8/8/8	0/1/1/1

The worst 5 of 12 bond length outliers are listed below:

Mol	Chain	Res	Type	Atoms	Z	Observed(Å)	Ideal(Å)
3	D	101	WHL	CG-NA	6.32	1.47	1.36
3	D	101	WHL	CJ-NB	6.01	1.47	1.36
3	C	101	WHL	CG-NA	5.50	1.46	1.36
3	C	101	WHL	CJ-NB	5.29	1.45	1.36
3	D	101	WHL	CF-NA	3.85	1.49	1.41

The worst 5 of 15 bond angle outliers are listed below:

Mol	Chain	Res	Type	Atoms	Z	Observed(°)	Ideal(°)
3	D	101	WHL	CH-CG-NA	9.41	129.09	114.95
3	D	101	WHL	OB-CG-NA	-5.99	114.85	123.06
3	D	101	WHL	CC-NB-CJ	-5.16	118.34	127.98
3	C	101	WHL	CC-NB-CJ	-5.12	118.42	127.98
3	D	101	WHL	OA-CJ-NB	-4.25	117.24	123.06

There are no chirality outliers.

5 of 8 torsion outliers are listed below:

Mol	Chain	Res	Type	Atoms
3	D	101	WHL	CA-CF-NA-CG
3	D	101	WHL	CD-CC-NB-CJ
3	D	101	WHL	CE-CF-NA-CG
3	C	101	WHL	CE-CF-NA-CG
3	C	101	WHL	CA-CF-NA-CG

There are no ring outliers.

No monomer is involved in short contacts.

## 5.7 Other polymers [i](#)

There are no such residues in this entry.

## 5.8 Polymer linkage issues [i](#)

There are no chain breaks in this entry.

## 6 Fit of model and data [i](#)

### 6.1 Protein, DNA and RNA chains [i](#)

In the following table, the column labelled ‘#RSRZ> 2’ contains the number (and percentage) of RSRZ outliers, followed by percent RSRZ outliers for the chain as percentile scores relative to all X-ray entries and entries of similar resolution. The OWAB column contains the minimum, median, 95<sup>th</sup> percentile and maximum values of the occupancy-weighted average B-factor per residue. The column labelled ‘Q< 0.9’ lists the number of (and percentage) of residues with an average occupancy less than 0.9.

Mol	Chain	Analysed	<RSRZ>	#RSRZ>2	OWAB(Å <sup>2</sup> )	Q<0.9
1	A	367/376 (97%)	1.18	70 (19%) 3 3	20, 63, 121, 150	2 (0%)
1	B	367/376 (97%)	1.77	130 (35%) 1 1	20, 91, 140, 167	2 (0%)
2	C	16/19 (84%)	1.04	1 (6%) 26 17	5, 50, 71, 80	0
2	D	16/19 (84%)	2.85	12 (75%) 0 0	55, 80, 111, 112	0
All	All	766/790 (96%)	1.50	213 (27%) 1 1	5, 76, 131, 167	4 (0%)

The worst 5 of 213 RSRZ outliers are listed below:

Mol	Chain	Res	Type	RSRZ
1	B	678	ILE	5.8
1	B	556	TYR	4.9
1	A	701	LYS	4.9
1	B	681	LYS	4.9
1	B	671	TYR	4.9

### 6.2 Non-standard residues in protein, DNA, RNA chains [i](#)

There are no non-standard protein/DNA/RNA residues in this entry.

### 6.3 Carbohydrates [i](#)

There are no oligosaccharides in this entry.

### 6.4 Ligands [i](#)

In the following table, the Atoms column lists the number of modelled atoms in the group and the number defined in the chemical component dictionary. The B-factors column lists the minimum, median, 95<sup>th</sup> percentile and maximum values of B factors of atoms in the group. The column labelled ‘Q< 0.9’ lists the number of atoms with occupancy less than 0.9.

Mol	Type	Chain	Res	Atoms	RSCC	RSR	B-factors( $\text{\AA}^2$ )	Q<0.9
3	WHL	D	101	14/14	0.71	0.32	89,126,153,166	0
3	WHL	C	101	14/14	0.87	0.21	21,58,85,98	0

## 6.5 Other polymers [i](#)

There are no such residues in this entry.