



wwPDB X-ray Structure Validation Summary Report ⓘ

Mar 8, 2026 – 01:30 PM UTC

PDB ID : 2EJ3 / pdb_00002ej3
Title : Crystal Structure of T.th.HB8 Branched-Chain Amino Acid Aminotransferase
Complexed with Gabapentin
Authors : Goto, M.
Deposited on : 2007-03-14
Resolution : 2.20 Å(reported)

This is a wwPDB X-ray Structure Validation Summary Report for a publicly released PDB entry.

We welcome your comments at validation@mail.wwpdb.org

A user guide is available at

<https://www.wwpdb.org/validation/2017/XrayValidationReportHelp>

with specific help available everywhere you see the ⓘ symbol.

The types of validation reports are described at

<http://www.wwpdb.org/validation/2017/FAQs#types>.

The following versions of software and data (see [references ⓘ](#)) were used in the production of this report:

MolProbity : 4-5-2 with Phenix2.0
Mogul : 2022.3.0, CSD as543be (2022)
Xtriage (Phenix) : 2.0
EDS : 3.0
Percentile statistics : 20250101.v01 (using entries in the PDB archive January 1st 2025)
CCP4 : 9.0.010 (Gargrove)
Density-Fitness : 1.0.12
Ideal geometry (proteins) : Engh & Huber (2001)
Ideal geometry (DNA, RNA) : Parkinson et al. (1996)
Validation Pipeline (wwPDB-VP) : 2.49

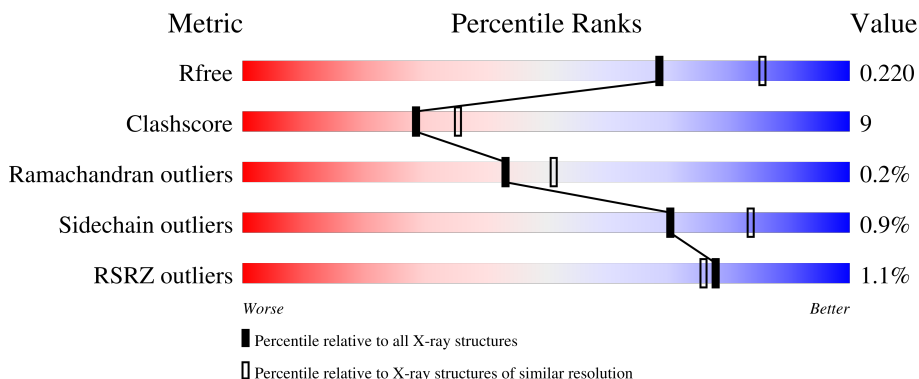
1 Overall quality at a glance

The following experimental techniques were used to determine the structure:

X-RAY DIFFRACTION

The reported resolution of this entry is 2.20 Å.

Percentile scores (ranging between 0-100) for global validation metrics of the entry are shown in the following graphic. The table shows the number of entries on which the scores are based.



Metric	Whole archive (#Entries)	Similar resolution (#Entries, resolution range(Å))
R_{free}	180053	6164 (2.20-2.20)
Clashscore	190562	6851 (2.20-2.20)
Ramachandran outliers	187476	6768 (2.20-2.20)
Sidechain outliers	187428	6769 (2.20-2.20)
RSRZ outliers	180081	6166 (2.20-2.20)

The table below summarises the geometric issues observed across the polymeric chains and their fit to the electron density. The red, orange, yellow and green segments of the lower bar indicate the fraction of residues that contain outliers for ≥ 3 , 2, 1 and 0 types of geometric quality criteria respectively. A grey segment represents the fraction of residues that are not modelled. The numeric value for each fraction is indicated below the corresponding segment, with a dot representing fractions $\leq 5\%$. The upper red bar (where present) indicates the fraction of residues that have poor fit to the electron density. The numeric value is given above the bar.

Mol	Chain	Length	Quality of chain
1	A	308	 2% 75% 19% . .
1	B	308	 % 84% 14% ..
1	C	308	 % 74% 19% . 5%

2 Entry composition [i](#)

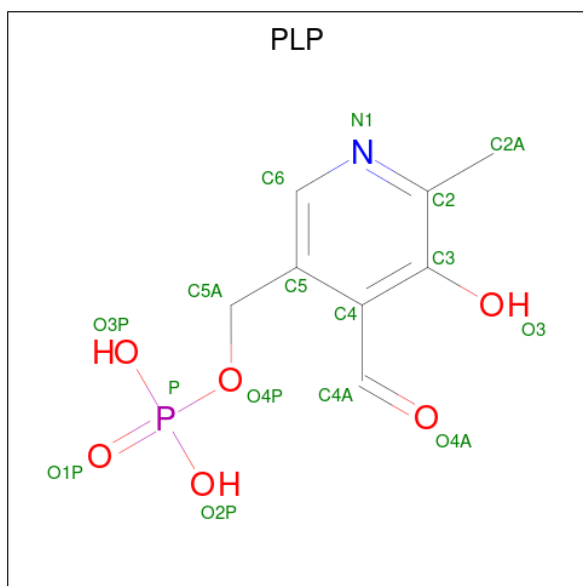
There are 5 unique types of molecules in this entry. The entry contains 7559 atoms, of which 0 are hydrogens and 0 are deuteriums.

In the tables below, the ZeroOcc column contains the number of atoms modelled with zero occupancy, the AltConf column contains the number of residues with at least one atom in alternate conformation and the Trace column contains the number of residues modelled with at most 2 atoms.

- Molecule 1 is a protein called Branched-chain amino acid aminotransferase.

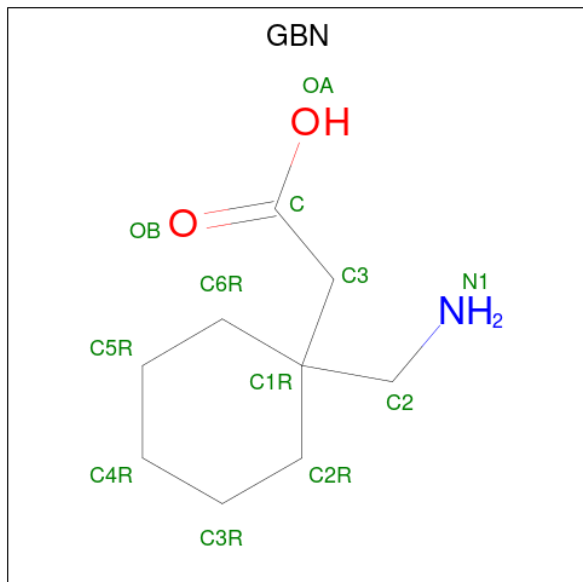
Mol	Chain	Residues	Atoms					ZeroOcc	AltConf	Trace
			Total	C	N	O	S			
1	A	297	Total	C	N	O	S	0	0	0
			2289	1464	395	420	10			
1	B	304	Total	C	N	O	S	0	0	0
			2354	1507	408	429	10			
1	C	294	Total	C	N	O	S	0	0	0
			2272	1455	393	414	10			

- Molecule 2 is PYRIDOXAL-5'-PHOSPHATE (CCD ID: PLP) (formula: C₈H₁₀NO₆P).



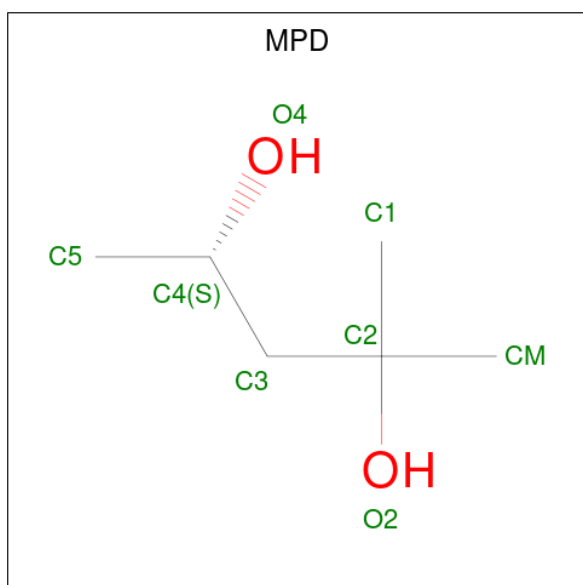
Mol	Chain	Residues	Atoms					ZeroOcc	AltConf
			Total	C	N	O	P		
2	A	1	Total	C	N	O	P	0	0
			15	8	1	5	1		
2	B	1	Total	C	N	O	P	0	0
			15	8	1	5	1		
2	C	1	Total	C	N	O	P	0	0
			15	8	1	5	1		

- Molecule 3 is [1-(AMINOMETHYL)CYCLOHEXYL]ACETIC ACID (CCD ID: GBN) (formula: C₉H₁₇NO₂).



Mol	Chain	Residues	Atoms				ZeroOcc	AltConf
			Total	C	N	O		
3	A	1	Total	C	N	O	0	0
			12	9	1	2		
3	B	1	Total	C	N	O	0	0
			12	9	1	2		
3	C	1	Total	C	N	O	0	0
			12	9	1	2		

- Molecule 4 is (4S)-2-METHYL-2,4-PENTANEDIOL (CCD ID: MPD) (formula: C₆H₁₄O₂).



Mol	Chain	Residues	Atoms			ZeroOcc	AltConf
4	A	1	Total	C	O	0	0
			8	6	2		
4	A	1	Total	C	O	0	0
			8	6	2		
4	B	1	Total	C	O	0	0
			8	6	2		
4	B	1	Total	C	O	0	0
			8	6	2		
4	C	1	Total	C	O	0	0
			8	6	2		

- Molecule 5 is water.

Mol	Chain	Residues	Atoms		ZeroOcc	AltConf
5	A	161	Total	O	0	0
			161	161		
5	B	203	Total	O	0	0
			203	203		
5	C	159	Total	O	0	0
			159	159		

4 Data and refinement statistics

Property	Value	Source
Space group	P 41 21 2	Depositor
Cell constants a, b, c, α , β , γ	143.71Å 143.71Å 115.72Å 90.00° 90.00° 90.00°	Depositor
Resolution (Å)	19.93 – 2.20 19.93 – 2.20	Depositor EDS
% Data completeness (in resolution range)	97.7 (19.93-2.20) 97.7 (19.93-2.20)	Depositor EDS
R_{merge}	(Not available)	Depositor
R_{sym}	(Not available)	Depositor
$\langle I/\sigma(I) \rangle$ ¹	2.97 (at 2.19Å)	Xtrriage
Refinement program	CNS 1.1	Depositor
R, R_{free}	0.188 , 0.219 0.189 , 0.220	Depositor DCC
R_{free} test set	6117 reflections (10.13%)	wwPDB-VP
Wilson B-factor (Å ²)	20.9	Xtrriage
Anisotropy	0.446	Xtrriage
Bulk solvent k_{sol} (e/Å ³), B_{sol} (Å ²)	0.48 , 75.0	EDS
L-test for twinning ²	$\langle L \rangle = 0.50$, $\langle L^2 \rangle = 0.34$	Xtrriage
Estimated twinning fraction	No twinning to report.	Xtrriage
F_o, F_c correlation	0.93	EDS
Total number of atoms	7559	wwPDB-VP
Average B, all atoms (Å ²)	21.0	wwPDB-VP

Xtrriage's analysis on translational NCS is as follows: *The largest off-origin peak in the Patterson function is 3.33% of the height of the origin peak. No significant pseudotranslation is detected.*

¹Intensities estimated from amplitudes.

²Theoretical values of $\langle |L| \rangle$, $\langle L^2 \rangle$ for acentric reflections are 0.5, 0.333 respectively for untwinned datasets, and 0.375, 0.2 for perfectly twinned datasets.

5 Model quality [i](#)

5.1 Standard geometry [i](#)

Bond lengths and bond angles in the following residue types are not validated in this section: MPD, GBN, PLP

The Z score for a bond length (or angle) is the number of standard deviations the observed value is removed from the expected value. A bond length (or angle) with $|Z| > 5$ is considered an outlier worth inspection. RMSZ is the root-mean-square of all Z scores of the bond lengths (or angles).

Mol	Chain	Bond lengths		Bond angles	
		RMSZ	# Z >5	RMSZ	# Z >5
1	A	0.37	0/2341	0.90	8/3183 (0.3%)
1	B	0.36	0/2408	0.91	7/3269 (0.2%)
1	C	0.36	0/2324	0.91	8/3157 (0.3%)
All	All	0.36	0/7073	0.91	23/9609 (0.2%)

Chiral center outliers are detected by calculating the chiral volume of a chiral center and verifying if the center is modelled as a planar moiety or with the opposite hand. A planarity outlier is detected by checking planarity of atoms in a peptide group, atoms in a mainchain group or atoms of a sidechain that are expected to be planar.

Mol	Chain	#Chirality outliers	#Planarity outliers
1	A	0	1
1	B	0	1
1	C	0	1
All	All	0	3

There are no bond length outliers.

The worst 5 of 23 bond angle outliers are listed below:

Mol	Chain	Res	Type	Atoms	Z	Observed(°)	Ideal(°)
1	C	165	VAL	N-CA-C	-8.98	101.65	110.72
1	A	108	GLY	N-CA-C	-8.77	100.71	112.82
1	A	165	VAL	N-CA-C	-8.49	102.14	110.72
1	C	108	GLY	N-CA-C	-8.44	101.74	112.54
1	B	165	VAL	N-CA-C	-7.81	102.83	110.72

There are no chirality outliers.

All (3) planarity outliers are listed below:

Mol	Chain	Res	Type	Group
1	A	164	TYR	Sidechain
1	B	164	TYR	Sidechain
1	C	164	TYR	Sidechain

5.2 Too-close contacts [i](#)

In the following table, the Non-H and H(model) columns list the number of non-hydrogen atoms and hydrogen atoms in the chain respectively. The H(added) column lists the number of hydrogen atoms added and optimized by MolProbity. The Clashes column lists the number of clashes within the asymmetric unit, whereas Symm-Clashes lists symmetry-related clashes.

Mol	Chain	Non-H	H(model)	H(added)	Clashes	Symm-Clashes
1	A	2289	0	2246	45	0
1	B	2354	0	2338	30	0
1	C	2272	0	2245	45	0
2	A	15	0	7	0	0
2	B	15	0	7	2	0
2	C	15	0	6	1	0
3	A	12	0	16	1	0
3	B	12	0	16	2	0
3	C	12	0	16	2	0
4	A	16	0	28	7	0
4	B	16	0	28	2	0
4	C	8	0	14	5	0
5	A	161	0	0	4	0
5	B	203	0	0	4	0
5	C	159	0	0	5	0
All	All	7559	0	6967	123	0

The all-atom clashscore is defined as the number of clashes found per 1000 atoms (including hydrogen atoms). The all-atom clashscore for this structure is 9.

The worst 5 of 123 close contacts within the same asymmetric unit are listed below, sorted by their clash magnitude.

Atom-1	Atom-2	Interatomic distance (Å)	Clash overlap (Å)
1:C:196:GLY:HA3	3:C:1414:GBN:H6R1	1.67	0.77
1:A:219:ILE:HG12	4:A:1417:MPD:HM3	1.74	0.69
1:B:196:GLY:HA3	3:B:914:GBN:H6R1	1.74	0.68
1:B:220:THR:O	1:B:224:VAL:HG23	1.94	0.67
1:C:142:ILE:HD11	1:C:268:TRP:CZ2	2.29	0.67

There are no symmetry-related clashes.

5.3 Torsion angles [i](#)

5.3.1 Protein backbone [i](#)

In the following table, the Percentiles column shows the percent Ramachandran outliers of the chain as a percentile score with respect to all X-ray entries followed by that with respect to entries of similar resolution.

The Analysed column shows the number of residues for which the backbone conformation was analysed, and the total number of residues.

Mol	Chain	Analysed	Favoured	Allowed	Outliers	Percentiles	
1	A	293/308 (95%)	282 (96%)	10 (3%)	1 (0%)	36	42
1	B	302/308 (98%)	293 (97%)	8 (3%)	1 (0%)	36	42
1	C	290/308 (94%)	281 (97%)	9 (3%)	0	100	100
All	All	885/924 (96%)	856 (97%)	27 (3%)	2 (0%)	43	51

All (2) Ramachandran outliers are listed below:

Mol	Chain	Res	Type
1	B	213	SER
1	A	213	SER

5.3.2 Protein sidechains [i](#)

In the following table, the Percentiles column shows the percent sidechain outliers of the chain as a percentile score with respect to all X-ray entries followed by that with respect to entries of similar resolution.

The Analysed column shows the number of residues for which the sidechain conformation was analysed, and the total number of residues.

Mol	Chain	Analysed	Rotameric	Outliers	Percentiles	
1	A	228/241 (95%)	227 (100%)	1 (0%)	84	92
1	B	235/241 (98%)	233 (99%)	2 (1%)	70	84
1	C	227/241 (94%)	224 (99%)	3 (1%)	61	76
All	All	690/723 (95%)	684 (99%)	6 (1%)	70	84

5 of 6 residues with a non-rotameric sidechain are listed below:

Mol	Chain	Res	Type
1	C	76	GLU
1	C	142	ILE
1	C	243	ASP
1	B	142	ILE
1	A	76	GLU

Sometimes sidechains can be flipped to improve hydrogen bonding and reduce clashes. 5 of 7 such sidechains are listed below:

Mol	Chain	Res	Type
1	B	62	ASN
1	C	62	ASN
1	C	306	ASN
1	C	166	ASN
1	A	212	HIS

5.3.3 RNA [i](#)

There are no RNA molecules in this entry.

5.4 Non-standard residues in protein, DNA, RNA chains [i](#)

There are no non-standard protein/DNA/RNA residues in this entry.

5.5 Carbohydrates [i](#)

There are no oligosaccharides in this entry.

5.6 Ligand geometry [i](#)

11 ligands are modelled in this entry.

In the following table, the Counts columns list the number of bonds (or angles) for which Mogul statistics could be retrieved, the number of bonds (or angles) that are observed in the model and the number of bonds (or angles) that are defined in the Chemical Component Dictionary. The Link column lists molecule types, if any, to which the group is linked. The Z score for a bond length (or angle) is the number of standard deviations the observed value is removed from the expected value. A bond length (or angle) with $|Z| > 2$ is considered an outlier worth inspection. RMSZ is the root-mean-square of all Z scores of the bond lengths (or angles).

Mol	Type	Chain	Res	Link	Bond lengths			Bond angles		
					Counts	RMSZ	# Z > 2	Counts	RMSZ	# Z > 2
3	GBN	C	1414	-	11,12,12	2.09	3 (27%)	13,16,16	5.89	3 (23%)
4	MPD	B	917	-	7,7,7	0.76	0	9,10,10	1.07	0
4	MPD	A	2416	-	7,7,7	0.76	0	9,10,10	0.93	0
2	PLP	A	413	1	15,15,16	1.24	1 (6%)	21,22,23	1.26	2 (9%)
3	GBN	B	914	-	11,12,12	2.08	3 (27%)	13,16,16	6.01	3 (23%)
4	MPD	B	915	-	7,7,7	0.81	0	9,10,10	0.99	0
3	GBN	A	2414	-	11,12,12	2.10	3 (27%)	13,16,16	5.90	3 (23%)
2	PLP	C	1413	1	15,15,16	1.30	1 (6%)	21,22,23	1.57	4 (19%)
4	MPD	A	1417	-	7,7,7	0.76	0	9,10,10	0.87	0
2	PLP	B	913	1	15,15,16	1.25	1 (6%)	21,22,23	1.38	2 (9%)
4	MPD	C	1416	-	7,7,7	0.80	0	9,10,10	0.83	0

In the following table, the Chirals column lists the number of chiral outliers, the number of chiral centers analysed, the number of these observed in the model and the number defined in the Chemical Component Dictionary. Similar counts are reported in the Torsion and Rings columns. '-' means no outliers of that kind were identified.

Mol	Type	Chain	Res	Link	Chirals	Torsions	Rings
3	GBN	C	1414	-	-	0/8/18/18	0/1/1/1
4	MPD	B	917	-	-	1/5/5/5	-
4	MPD	A	2416	-	-	2/5/5/5	-
2	PLP	A	413	1	-	0/6/6/8	0/1/1/1
3	GBN	B	914	-	-	0/8/18/18	0/1/1/1
4	MPD	B	915	-	-	3/5/5/5	-
3	GBN	A	2414	-	-	0/8/18/18	0/1/1/1
2	PLP	C	1413	1	-	0/6/6/8	0/1/1/1
4	MPD	A	1417	-	-	1/5/5/5	-
2	PLP	B	913	1	-	0/6/6/8	0/1/1/1
4	MPD	C	1416	-	-	1/5/5/5	-

The worst 5 of 12 bond length outliers are listed below:

Mol	Chain	Res	Type	Atoms	Z	Observed(Å)	Ideal(Å)
3	B	914	GBN	C3-C1R	3.64	1.59	1.54
3	B	914	GBN	C3-C	-3.52	1.40	1.50
3	A	2414	GBN	C3-C	-3.52	1.40	1.50
3	C	1414	GBN	C3-C1R	3.45	1.59	1.54
3	C	1414	GBN	C3-C	-3.40	1.40	1.50

The worst 5 of 17 bond angle outliers are listed below:

Mol	Chain	Res	Type	Atoms	Z	Observed(°)	Ideal(°)
3	B	914	GBN	C2-C1R-C3	-20.50	86.90	110.49
3	A	2414	GBN	C2-C1R-C3	-20.09	87.37	110.49
3	C	1414	GBN	C2-C1R-C3	-20.08	87.38	110.49
3	B	914	GBN	C1R-C3-C	5.49	129.21	115.99
3	A	2414	GBN	C1R-C3-C	5.44	129.09	115.99

There are no chirality outliers.

5 of 8 torsion outliers are listed below:

Mol	Chain	Res	Type	Atoms
4	A	2416	MPD	O2-C2-C3-C4
4	B	915	MPD	C1-C2-C3-C4
4	B	915	MPD	CM-C2-C3-C4
4	A	2416	MPD	C2-C3-C4-C5
4	A	1417	MPD	C2-C3-C4-C5

There are no ring outliers.

10 monomers are involved in 22 short contacts:

Mol	Chain	Res	Type	Clashes	Symm-Clashes
3	C	1414	GBN	2	0
4	B	917	MPD	1	0
4	A	2416	MPD	2	0
3	B	914	GBN	2	0
4	B	915	MPD	1	0
3	A	2414	GBN	1	0
2	C	1413	PLP	1	0
4	A	1417	MPD	5	0
2	B	913	PLP	2	0
4	C	1416	MPD	5	0

5.7 Other polymers [i](#)

There are no such residues in this entry.

5.8 Polymer linkage issues [i](#)

There are no chain breaks in this entry.

6 Fit of model and data [i](#)

6.1 Protein, DNA and RNA chains [i](#)

In the following table, the column labelled ‘#RSRZ> 2’ contains the number (and percentage) of RSRZ outliers, followed by percent RSRZ outliers for the chain as percentile scores relative to all X-ray entries and entries of similar resolution. The OWAB column contains the minimum, median, 95th percentile and maximum values of the occupancy-weighted average B-factor per residue. The column labelled ‘Q< 0.9’ lists the number of (and percentage) of residues with an average occupancy less than 0.9.

Mol	Chain	Analysed	<RSRZ>	#RSRZ>2	OWAB(Å ²)	Q<0.9
1	A	297/308 (96%)	-0.29	5 (1%) 69 66	12, 20, 32, 57	0
1	B	304/308 (98%)	-0.37	2 (0%) 84 82	12, 19, 29, 42	0
1	C	294/308 (95%)	-0.33	3 (1%) 79 77	12, 19, 33, 50	0
All	All	895/924 (96%)	-0.33	10 (1%) 78 76	12, 19, 32, 57	0

The worst 5 of 10 RSRZ outliers are listed below:

Mol	Chain	Res	Type	RSRZ
1	A	126	TRP	4.4
1	A	125	GLU	3.5
1	C	126	TRP	2.9
1	A	2	GLN	2.5
1	C	138	GLY	2.5

6.2 Non-standard residues in protein, DNA, RNA chains [i](#)

There are no non-standard protein/DNA/RNA residues in this entry.

6.3 Carbohydrates [i](#)

There are no oligosaccharides in this entry.

6.4 Ligands [i](#)

In the following table, the Atoms column lists the number of modelled atoms in the group and the number defined in the chemical component dictionary. The B-factors column lists the minimum, median, 95th percentile and maximum values of B factors of atoms in the group. The column labelled ‘Q< 0.9’ lists the number of atoms with occupancy less than 0.9.

Mol	Type	Chain	Res	Atoms	RSCC	RSR	B-factors(\AA^2)	Q<0.9
3	GBN	A	2414	12/12	0.75	0.15	35,38,41,41	0
3	GBN	B	914	12/12	0.75	0.18	30,42,44,44	0
4	MPD	A	2416	8/8	0.82	0.14	29,31,33,34	0
3	GBN	C	1414	12/12	0.84	0.13	36,39,40,41	0
4	MPD	A	1417	8/8	0.86	0.11	23,26,30,33	0
4	MPD	B	915	8/8	0.86	0.14	59,60,61,61	0
4	MPD	C	1416	8/8	0.87	0.12	22,26,28,29	0
4	MPD	B	917	8/8	0.91	0.09	19,21,27,31	0
2	PLP	A	413	15/16	0.98	0.06	16,18,19,20	0
2	PLP	B	913	15/16	0.98	0.06	14,16,20,21	0
2	PLP	C	1413	15/16	0.99	0.05	17,19,21,22	0

6.5 Other polymers [i](#)

There are no such residues in this entry.