



# wwPDB X-ray Structure Validation Summary Report ⓘ

Mar 5, 2026 – 07:43 AM UTC

PDB ID : 5ELE / pdb\_00005ele  
Title : Cholera toxin El Tor B-pentamer in complex with A Lewis-y  
Authors : Heggelund, J.E.; Burschowsky, D.; Krenzel, U.  
Deposited on : 2015-11-04  
Resolution : 1.60 Å(reported)

This is a wwPDB X-ray Structure Validation Summary Report for a publicly released PDB entry.

We welcome your comments at [validation@mail.wwpdb.org](mailto:validation@mail.wwpdb.org)

A user guide is available at

<https://www.wwpdb.org/validation/2017/XrayValidationReportHelp>

with specific help available everywhere you see the ⓘ symbol.

The types of validation reports are described at

<http://www.wwpdb.org/validation/2017/FAQs#types>.

---

The following versions of software and data (see [references ⓘ](#)) were used in the production of this report:

MolProbity : 4-5-2 with Phenix2.0  
Mogul : 2022.3.0, CSD as543be (2022)  
Xtriage (Phenix) : 2.0  
EDS : 3.0  
Percentile statistics : 20250101.v01 (using entries in the PDB archive January 1st 2025)  
CCP4 : 9.0.010 (Gargrove)  
Density-Fitness : 1.0.12  
Ideal geometry (proteins) : Engh & Huber (2001)  
Ideal geometry (DNA, RNA) : Parkinson et al. (1996)  
Validation Pipeline (wwPDB-VP) : 2.49

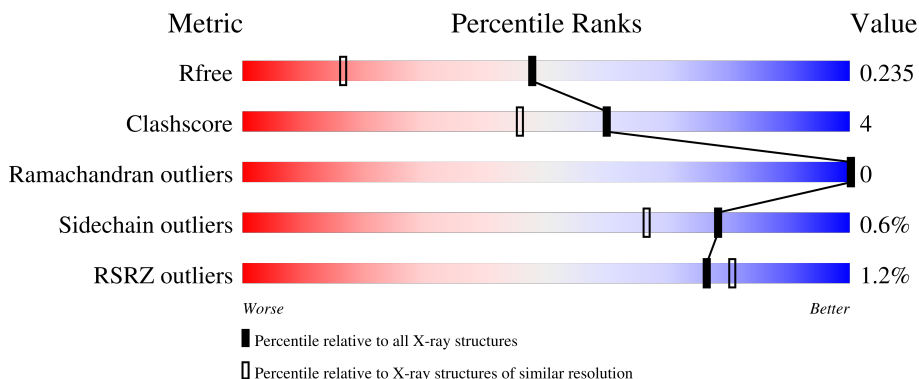
# 1 Overall quality at a glance

The following experimental techniques were used to determine the structure:

*X-RAY DIFFRACTION*

The reported resolution of this entry is 1.60 Å.

Percentile scores (ranging between 0-100) for global validation metrics of the entry are shown in the following graphic. The table shows the number of entries on which the scores are based.



Metric	Whole archive (#Entries)	Similar resolution (#Entries, resolution range(Å))
$R_{free}$	180053	4673 (1.60-1.60)
Clashscore	190562	4931 (1.60-1.60)
Ramachandran outliers	187476	4831 (1.60-1.60)
Sidechain outliers	187428	4830 (1.60-1.60)
RSRZ outliers	180081	4672 (1.60-1.60)

The table below summarises the geometric issues observed across the polymeric chains and their fit to the electron density. The red, orange, yellow and green segments of the lower bar indicate the fraction of residues that contain outliers for  $\geq 3$ , 2, 1 and 0 types of geometric quality criteria respectively. A grey segment represents the fraction of residues that are not modelled. The numeric value for each fraction is indicated below the corresponding segment, with a dot representing fractions  $\leq 5\%$ . The upper red bar (where present) indicates the fraction of residues that have poor fit to the electron density. The numeric value is given above the bar.

Mol	Chain	Length	Quality of chain
1	A	103	93% 7%
1	B	103	93% 7%
1	C	103	93% 7%
1	D	103	97% 2% ..
1	E	103	98% .

Continued on next page...

*Continued from previous page...*

Mol	Chain	Length	Quality of chain
1	F	103	<p>%</p> <p>90% 10%</p>
1	G	103	<p>%</p> <p>95% 5%</p>
1	H	103	<p>%</p> <p>91% 9%</p>
1	I	103	<p>%</p> <p>91% 9%</p>
1	J	103	<p>%</p> <p>90% 10%</p>
2	K	5	<p>20% 60% 20%</p>
2	L	5	<p>20% 20% 60%</p>
2	M	5	<p>20% 40% 40%</p>

## 2 Entry composition [i](#)

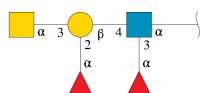
There are 8 unique types of molecules in this entry. The entry contains 9722 atoms, of which 0 are hydrogens and 0 are deuteriums.

In the tables below, the ZeroOcc column contains the number of atoms modelled with zero occupancy, the AltConf column contains the number of residues with at least one atom in alternate conformation and the Trace column contains the number of residues modelled with at most 2 atoms.

- Molecule 1 is a protein called Cholera enterotoxin subunit B.

Mol	Chain	Residues	Atoms					ZeroOcc	AltConf	Trace
			Total	C	N	O	S			
1	A	103	831	526	141	158	6	0	3	0
1	B	103	832	528	142	156	6	0	3	0
1	C	103	837	533	142	156	6	0	4	0
1	D	103	843	536	144	157	6	0	5	0
1	E	103	834	528	141	159	6	0	4	0
1	F	103	826	523	141	156	6	0	2	0
1	G	103	833	528	140	159	6	0	4	0
1	H	103	836	531	141	158	6	0	4	0
1	I	103	843	536	144	157	6	0	5	0
1	J	103	832	527	142	157	6	0	3	0

- Molecule 2 is an oligosaccharide called alpha-L-fucopyranose-(1-2)-[2-acetamido-2-deoxy-alpha-D-galactopyranose-(1-3)]beta-D-galactopyranose-(1-4)-[alpha-L-fucopyranose-(1-3)]2-acetamido-2-deoxy-alpha-D-glucopyranose.



Mol	Chain	Residues	Atoms				ZeroOcc	AltConf	Trace
			Total	C	N	O			
2	K	5	60	34	2	24	0	0	0

*Continued on next page...*

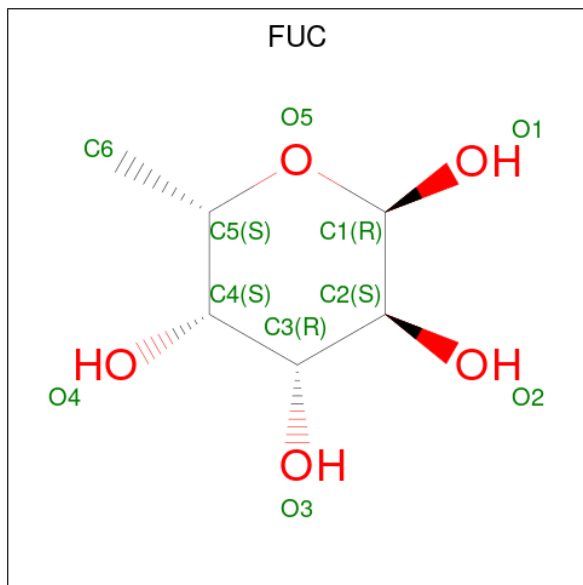
Continued from previous page...

Mol	Chain	Residues	Atoms				ZeroOcc	AltConf	Trace
2	L	5	Total	C	N	O	0	5	0
			105	60	3	42			
2	M	5	Total	C	N	O	0	0	0
			60	34	2	24			

- Molecule 3 is CALCIUM ION (CCD ID: CA) (formula: Ca).

Mol	Chain	Residues	Atoms		ZeroOcc	AltConf
3	A	2	Total	Ca	0	0
			2	2		
3	B	2	Total	Ca	0	0
			2	2		
3	C	2	Total	Ca	0	0
			2	2		
3	D	2	Total	Ca	0	0
			2	2		
3	E	2	Total	Ca	0	0
			2	2		

- Molecule 4 is alpha-L-fucopyranose (CCD ID: FUC) (formula: C<sub>6</sub>H<sub>12</sub>O<sub>5</sub>).



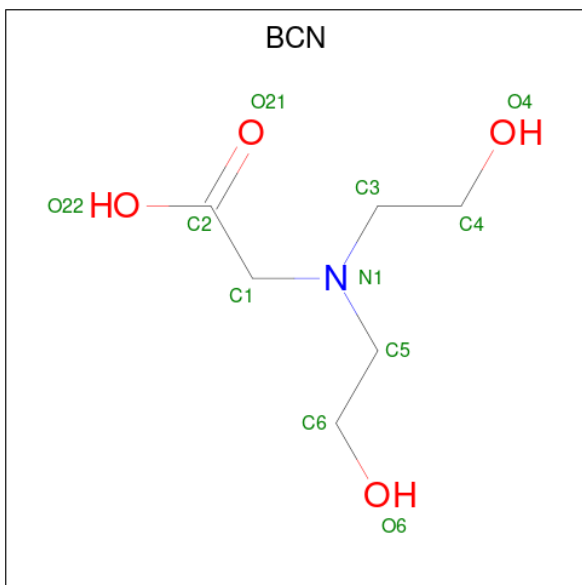
Mol	Chain	Residues	Atoms			ZeroOcc	AltConf
4	A	1	Total	C	O	0	0
			11	6	5		
4	F	1	Total	C	O	0	0
			11	6	5		

Continued on next page...

Continued from previous page...

Mol	Chain	Residues	Atoms			ZeroOcc	AltConf
4	H	1	Total	C	O	0	0
			11	6	5		
4	I	1	Total	C	O	0	0
			11	6	5		

- Molecule 5 is BICINE (CCD ID: BCN) (formula:  $C_6H_{13}NO_4$ ).



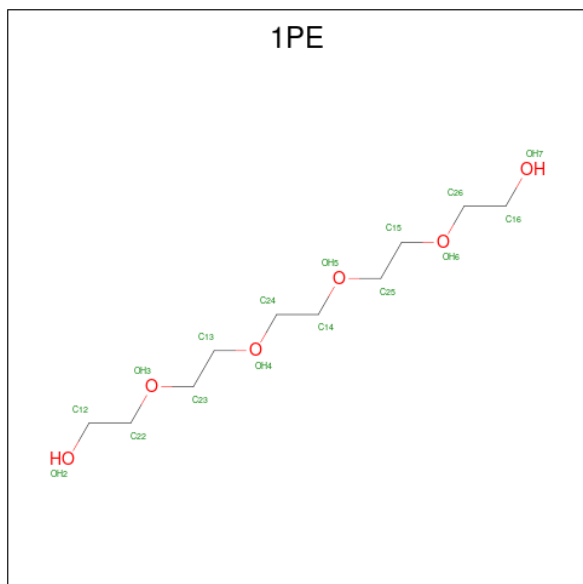
Mol	Chain	Residues	Atoms				ZeroOcc	AltConf
5	A	1	Total	C	N	O	0	0
			11	6	1	4		
5	A	1	Total	C	N	O	0	0
			11	6	1	4		
5	B	1	Total	C	N	O	0	0
			11	6	1	4		
5	B	1	Total	C	N	O	0	0
			11	6	1	4		
5	C	1	Total	C	N	O	0	0
			11	6	1	4		
5	C	1	Total	C	N	O	0	0
			11	6	1	4		
5	D	1	Total	C	N	O	0	0
			11	6	1	4		
5	D	1	Total	C	N	O	0	0
			11	6	1	4		
5	E	1	Total	C	N	O	0	0
			11	6	1	4		

Continued on next page...

Continued from previous page...

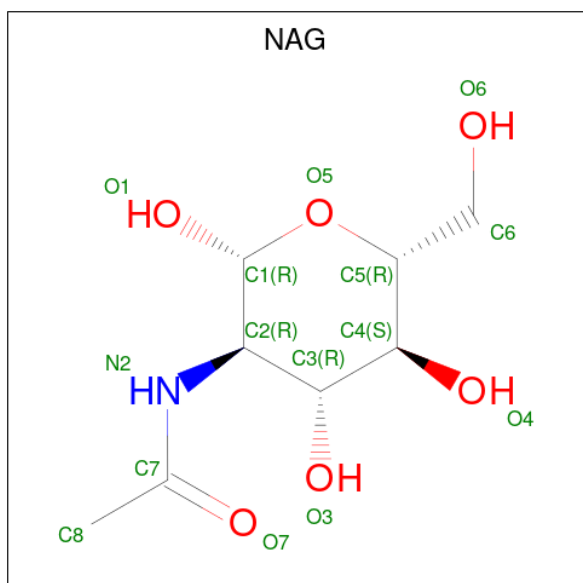
Mol	Chain	Residues	Atoms			ZeroOcc	AltConf	
			Total	C	N			O
5	E	1	11	6	1	4	0	0

- Molecule 6 is PENTAETHYLENE GLYCOL (CCD ID: 1PE) (formula:  $C_{10}H_{22}O_6$ ).



Mol	Chain	Residues	Atoms			ZeroOcc	AltConf
			Total	C	O		
6	F	1	16	10	6	0	0

- Molecule 7 is 2-acetamido-2-deoxy-beta-D-glucopyranose (CCD ID: NAG) (formula:  $C_8H_{15}NO_6$ ).



Mol	Chain	Residues	Atoms				ZeroOcc	AltConf
7	G	1	Total	C	N	O	0	1
			15	8	1	6		

- Molecule 8 is water.

Mol	Chain	Residues	Atoms		ZeroOcc	AltConf
8	A	87	Total	O	0	0
			87	87		
8	B	67	Total	O	0	0
			67	67		
8	C	86	Total	O	0	0
			86	86		
8	D	92	Total	O	0	0
			92	92		
8	E	86	Total	O	0	1
			87	87		
8	F	121	Total	O	0	1
			122	122		
8	G	99	Total	O	0	1
			100	100		
8	H	104	Total	O	0	1
			105	105		
8	I	108	Total	O	0	1
			109	109		
8	J	100	Total	O	0	0
			100	100		

### 3 Residue-property plots [i](#)

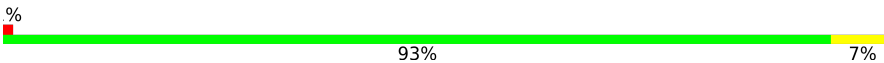
These plots are drawn for all protein, RNA, DNA and oligosaccharide chains in the entry. The first graphic for a chain summarises the proportions of the various outlier classes displayed in the second graphic. The second graphic shows the sequence view annotated by issues in geometry and electron density. Residues are color-coded according to the number of geometric quality criteria for which they contain at least one outlier: green = 0, yellow = 1, orange = 2 and red = 3 or more. A red dot above a residue indicates a poor fit to the electron density ( $RSRZ > 2$ ). Stretches of 2 or more consecutive residues without any outlier are shown as a green connector. Residues present in the sample, but not in the model, are shown in grey.

- Molecule 1: Cholera enterotoxin subunit B

Chain A:  93% 7%

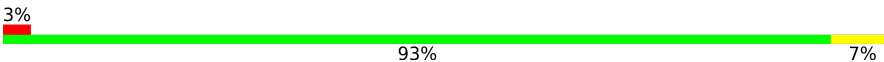


- Molecule 1: Cholera enterotoxin subunit B

Chain B:  93% 7%



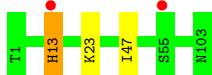
- Molecule 1: Cholera enterotoxin subunit B

Chain C:  93% 7% 3%



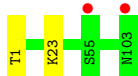
- Molecule 1: Cholera enterotoxin subunit B

Chain D:  97% 2% 2%

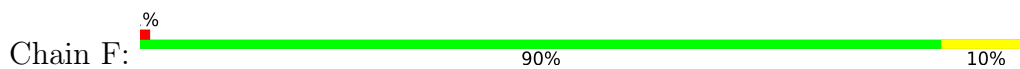


- Molecule 1: Cholera enterotoxin subunit B

Chain E:  98%



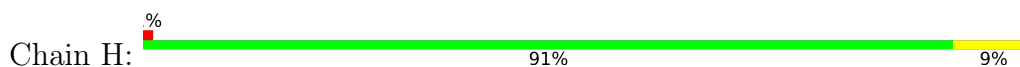
- Molecule 1: Cholera enterotoxin subunit B



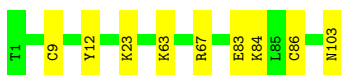
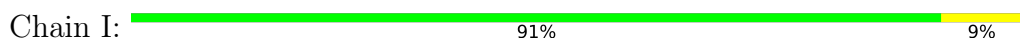
- Molecule 1: Cholera enterotoxin subunit B



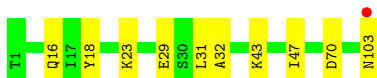
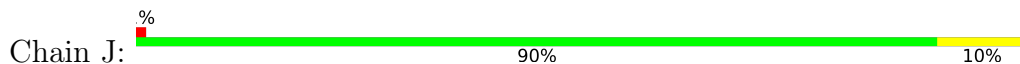
- Molecule 1: Cholera enterotoxin subunit B



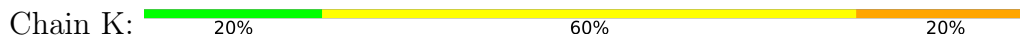
- Molecule 1: Cholera enterotoxin subunit B



- Molecule 1: Cholera enterotoxin subunit B



- Molecule 2: alpha-L-fucopyranose-(1-2)-[2-acetamido-2-deoxy-alpha-D-galactopyranose-(1-3)]beta-D-galactopyranose-(1-4)-[alpha-L-fucopyranose-(1-3)]2-acetamido-2-deoxy-alpha-D-glucopyranose

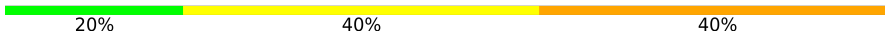


- Molecule 2: alpha-L-fucopyranose-(1-2)-[2-acetamido-2-deoxy-alpha-D-galactopyranose-(1-3)]beta-D-galactopyranose-(1-4)-[alpha-L-fucopyranose-(1-3)]2-acetamido-2-deoxy-alpha-D-glucopyranose





- Molecule 2: alpha-L-fucopyranose-(1-2)-[2-acetamido-2-deoxy-alpha-D-galactopyranose-(1-3)]beta-D-galactopyranose-(1-4)-[alpha-L-fucopyranose-(1-3)]2-acetamido-2-deoxy-alpha-D-glucopyranose

Chain M: 



## 4 Data and refinement statistics

Property	Value	Source
Space group	P 21 21 21	Depositor
Cell constants a, b, c, $\alpha$ , $\beta$ , $\gamma$	63.54Å 82.97Å 196.56Å 90.00° 90.00° 90.00°	Depositor
Resolution (Å)	49.14 – 1.60 49.14 – 1.60	Depositor EDS
% Data completeness (in resolution range)	99.2 (49.14-1.60) 99.2 (49.14-1.60)	Depositor EDS
$R_{merge}$	0.13	Depositor
$R_{sym}$	(Not available)	Depositor
$\langle I/\sigma(I) \rangle$ <sup>1</sup>	1.16 (at 1.60Å)	Xtrriage
Refinement program	REFMAC 5.8.0135	Depositor
R, $R_{free}$	0.183 , 0.226 0.192 , 0.235	Depositor DCC
$R_{free}$ test set	6822 reflections (4.96%)	wwPDB-VP
Wilson B-factor (Å <sup>2</sup> )	16.8	Xtrriage
Anisotropy	0.514	Xtrriage
Bulk solvent $k_{sol}$ (e/Å <sup>3</sup> ), $B_{sol}$ (Å <sup>2</sup> )	0.32 , 32.8	EDS
L-test for twinning <sup>2</sup>	$\langle  L  \rangle = 0.48$ , $\langle L^2 \rangle = 0.31$	Xtrriage
Estimated twinning fraction	No twinning to report.	Xtrriage
$F_o, F_c$ correlation	0.96	EDS
Total number of atoms	9722	wwPDB-VP
Average B, all atoms (Å <sup>2</sup> )	22.0	wwPDB-VP

Xtrriage's analysis on translational NCS is as follows: *The largest off-origin peak in the Patterson function is 4.09% of the height of the origin peak. No significant pseudotranslation is detected.*

<sup>1</sup>Intensities estimated from amplitudes.

<sup>2</sup>Theoretical values of  $\langle |L| \rangle$ ,  $\langle L^2 \rangle$  for acentric reflections are 0.5, 0.333 respectively for untwinned datasets, and 0.375, 0.2 for perfectly twinned datasets.

## 5 Model quality

### 5.1 Standard geometry

Bond lengths and bond angles in the following residue types are not validated in this section: BCN, GAL, NAG, CA, FUC, 1PE, A2G, NDG

The Z score for a bond length (or angle) is the number of standard deviations the observed value is removed from the expected value. A bond length (or angle) with  $|Z| > 5$  is considered an outlier worth inspection. RMSZ is the root-mean-square of all Z scores of the bond lengths (or angles).

Mol	Chain	Bond lengths		Bond angles	
		RMSZ	# Z  >5	RMSZ	# Z  >5
1	A	0.88	0/854	0.87	0/1152
1	B	0.82	0/855	0.88	0/1152
1	C	0.95	0/863	0.95	1/1163 (0.1%)
1	D	0.89	0/873	0.89	0/1178
1	E	0.90	0/860	0.93	0/1160
1	F	0.93	0/846	0.91	0/1141
1	G	0.94	0/859	0.92	0/1160
1	H	0.93	0/862	0.89	0/1163
1	I	0.94	0/872	0.85	0/1174
1	J	0.94	0/855	0.88	0/1153
All	All	0.91	0/8599	0.90	1/11596 (0.0%)

There are no bond length outliers.

All (1) bond angle outliers are listed below:

Mol	Chain	Res	Type	Atoms	Z	Observed(°)	Ideal(°)
1	C	96	ILE	N-CA-C	6.62	117.58	109.30

There are no chirality outliers.

There are no planarity outliers.

### 5.2 Too-close contacts

In the following table, the Non-H and H(model) columns list the number of non-hydrogen atoms and hydrogen atoms in the chain respectively. The H(added) column lists the number of hydrogen atoms added and optimized by MolProbity. The Clashes column lists the number of clashes within the asymmetric unit, whereas Symm-Clashes lists symmetry-related clashes.

Mol	Chain	Non-H	H(model)	H(added)	Clashes	Symm-Clashes
1	A	831	0	845	10	0
1	B	832	0	854	7	0
1	C	837	0	865	4	0
1	D	843	0	868	3	0
1	E	834	0	850	2	0
1	F	826	0	841	12	0
1	G	833	0	848	6	0
1	H	836	0	856	7	0
1	I	843	0	873	13	0
1	J	832	0	849	15	0
2	K	60	0	50	1	0
2	L	105	0	89	5	0
2	M	60	0	50	5	0
3	A	2	0	0	0	0
3	B	2	0	0	0	0
3	C	2	0	0	0	0
3	D	2	0	0	0	0
3	E	2	0	0	0	0
4	A	11	0	12	0	0
4	F	11	0	12	0	0
4	H	11	0	12	0	0
4	I	11	0	12	0	0
5	A	22	0	20	0	0
5	B	22	0	20	2	0
5	C	22	0	20	0	0
5	D	22	0	20	0	0
5	E	22	0	20	0	0
6	F	16	0	22	0	0
7	G	15	0	8	2	0
8	A	87	0	0	2	0
8	B	67	0	0	3	0
8	C	86	0	0	1	0
8	D	92	0	0	2	0
8	E	87	0	0	0	0
8	F	122	0	0	5	1
8	G	100	0	0	3	0
8	H	105	0	0	2	1
8	I	109	0	0	0	0
8	J	100	0	0	2	0
All	All	9722	0	8916	72	1

The all-atom clashscore is defined as the number of clashes found per 1000 atoms (including hydrogen atoms). The all-atom clashscore for this structure is 4.

The worst 5 of 72 close contacts within the same asymmetric unit are listed below, sorted by their clash magnitude.

Atom-1	Atom-2	Interatomic distance (Å)	Clash overlap (Å)
1:D:13[B]:HIS:CE1	8:D:301:HOH:O	1.98	1.14
1:D:13[B]:HIS:NE2	8:D:301:HOH:O	1.80	1.11
1:I:63[B]:LYS:HZ2	1:I:63[B]:LYS:HB2	1.06	1.10
1:I:63[B]:LYS:HB2	1:I:63[B]:LYS:NZ	1.76	0.97
1:I:63[B]:LYS:NZ	1:I:63[B]:LYS:CB	2.27	0.97

All (1) symmetry-related close contacts are listed below. The label for Atom-2 includes the symmetry operator and encoded unit-cell translations to be applied.

Atom-1	Atom-2	Interatomic distance (Å)	Clash overlap (Å)
8:F:383:HOH:O	8:H:323:HOH:O[3_454]	2.17	0.03

## 5.3 Torsion angles [i](#)

### 5.3.1 Protein backbone [i](#)

In the following table, the Percentiles column shows the percent Ramachandran outliers of the chain as a percentile score with respect to all X-ray entries followed by that with respect to entries of similar resolution.

The Analysed column shows the number of residues for which the backbone conformation was analysed, and the total number of residues.

Mol	Chain	Analysed	Favoured	Allowed	Outliers	Percentiles	
1	A	104/103 (101%)	103 (99%)	1 (1%)	0	100	100
1	B	104/103 (101%)	103 (99%)	1 (1%)	0	100	100
1	C	105/103 (102%)	103 (98%)	2 (2%)	0	100	100
1	D	106/103 (103%)	104 (98%)	2 (2%)	0	100	100
1	E	105/103 (102%)	104 (99%)	1 (1%)	0	100	100
1	F	103/103 (100%)	102 (99%)	1 (1%)	0	100	100
1	G	105/103 (102%)	104 (99%)	1 (1%)	0	100	100
1	H	105/103 (102%)	104 (99%)	1 (1%)	0	100	100
1	I	106/103 (103%)	105 (99%)	1 (1%)	0	100	100
1	J	104/103 (101%)	103 (99%)	1 (1%)	0	100	100
All	All	1047/1030 (102%)	1035 (99%)	12 (1%)	0	100	100

There are no Ramachandran outliers to report.

### 5.3.2 Protein sidechains [i](#)

In the following table, the Percentiles column shows the percent sidechain outliers of the chain as a percentile score with respect to all X-ray entries followed by that with respect to entries of similar resolution.

The Analysed column shows the number of residues for which the sidechain conformation was analysed, and the total number of residues.

Mol	Chain	Analysed	Rotameric	Outliers	Percentiles	
1	A	92/89 (103%)	91 (99%)	1 (1%)	65	46
1	B	92/89 (103%)	92 (100%)	0	100	100
1	C	93/89 (104%)	92 (99%)	1 (1%)	65	46
1	D	94/89 (106%)	91 (97%)	3 (3%)	34	12
1	E	93/89 (104%)	93 (100%)	0	100	100
1	F	91/89 (102%)	90 (99%)	1 (1%)	65	46
1	G	93/89 (104%)	93 (100%)	0	100	100
1	H	93/89 (104%)	93 (100%)	0	100	100
1	I	94/89 (106%)	94 (100%)	0	100	100
1	J	92/89 (103%)	92 (100%)	0	100	100
All	All	927/890 (104%)	921 (99%)	6 (1%)	78	66

5 of 6 residues with a non-rotameric sidechain are listed below:

Mol	Chain	Res	Type
1	D	13[B]	HIS
1	D	23	LYS
1	F	43	LYS
1	C	62	LYS
1	A	43	LYS

Sometimes sidechains can be flipped to improve hydrogen bonding and reduce clashes. 5 of 20 such sidechains are listed below:

Mol	Chain	Res	Type
1	H	94	HIS
1	I	13	HIS
1	I	103	ASN
1	I	94	HIS

*Continued on next page...*

*Continued from previous page...*

Mol	Chain	Res	Type
1	F	13	HIS

### 5.3.3 RNA [i](#)

There are no RNA molecules in this entry.

## 5.4 Non-standard residues in protein, DNA, RNA chains [i](#)

There are no non-standard protein/DNA/RNA residues in this entry.

## 5.5 Carbohydrates [i](#)

19 monosaccharides are modelled in this entry.

In the following table, the Counts columns list the number of bonds (or angles) for which Mogul statistics could be retrieved, the number of bonds (or angles) that are observed in the model and the number of bonds (or angles) that are defined in the Chemical Component Dictionary. The Link column lists molecule types, if any, to which the group is linked. The Z score for a bond length (or angle) is the number of standard deviations the observed value is removed from the expected value. A bond length (or angle) with  $|Z| > 2$  is considered an outlier worth inspection. RMSZ is the root-mean-square of all Z scores of the bond lengths (or angles).

Mol	Type	Chain	Res	Link	Bond lengths			Bond angles		
					Counts	RMSZ	# Z  > 2	Counts	RMSZ	# Z  > 2
2	NDG	K	1	2	15,15,15	1.00	2 (13%)	21,21,21	1.79	2 (9%)
2	GAL	K	2	2	11,11,12	1.13	1 (9%)	15,15,17	1.17	1 (6%)
2	FUC	K	3	2	10,10,11	1.69	1 (10%)	14,14,16	0.55	0
2	A2G	K	4	2	14,14,15	1.50	2 (14%)	17,19,21	0.95	1 (5%)
2	FUC	K	5	2	10,10,11	1.07	0	14,14,16	0.75	0
2	NDG	L	1[A]	2	15,15,15	1.16	1 (6%)	21,21,21	1.90	2 (9%)
2	GAL	L	2[A]	2	11,11,12	0.94	0	15,15,17	1.09	1 (6%)
2	GAL	L	2[B]	2,7	11,11,12	0.62	0	15,15,17	0.96	2 (13%)
2	FUC	L	3[A]	2	10,10,11	0.85	0	14,14,16	0.82	0
2	FUC	L	3[B]	2	10,10,11	0.60	0	14,14,16	1.03	0
2	A2G	L	4[A]	2	14,14,15	1.76	3 (21%)	17,19,21	1.47	3 (17%)
2	A2G	L	4[B]	2	14,14,15	1.29	2 (14%)	17,19,21	1.64	3 (17%)
2	FUC	L	5[A]	2	10,10,11	1.40	2 (20%)	14,14,16	0.80	0
2	FUC	L	5[B]	7	10,10,11	0.89	0	14,14,16	0.85	0
2	NDG	M	1	2	15,15,15	1.45	3 (20%)	21,21,21	1.85	3 (14%)

Mol	Type	Chain	Res	Link	Bond lengths			Bond angles		
					Counts	RMSZ	# Z  > 2	Counts	RMSZ	# Z  > 2
2	GAL	M	2	2	11,11,12	0.76	0	15,15,17	1.08	1 (6%)
2	FUC	M	3	2	10,10,11	0.96	0	14,14,16	0.81	0
2	A2G	M	4	2	14,14,15	1.71	4 (28%)	17,19,21	1.35	1 (5%)
2	FUC	M	5	2	10,10,11	1.29	2 (20%)	14,14,16	1.15	1 (7%)

In the following table, the Chirals column lists the number of chiral outliers, the number of chiral centers analysed, the number of these observed in the model and the number defined in the Chemical Component Dictionary. Similar counts are reported in the Torsion and Rings columns. '-' means no outliers of that kind were identified.

Mol	Type	Chain	Res	Link	Chirals	Torsions	Rings
2	NDG	K	1	2	-	0/6/26/26	0/1/1/1
2	GAL	K	2	2	-	0/2/19/22	0/1/1/1
2	FUC	K	3	2	-	-	0/1/1/1
2	A2G	K	4	2	-	3/6/23/26	0/1/1/1
2	FUC	K	5	2	-	-	0/1/1/1
2	NDG	L	1[A]	2	-	0/6/26/26	0/1/1/1
2	GAL	L	2[A]	2	-	1/2/19/22	0/1/1/1
2	GAL	L	2[B]	2,7	-	0/2/19/22	0/1/1/1
2	FUC	L	3[A]	2	-	-	0/1/1/1
2	FUC	L	3[B]	2	-	-	0/1/1/1
2	A2G	L	4[A]	2	-	2/6/23/26	0/1/1/1
2	A2G	L	4[B]	2	-	2/6/23/26	0/1/1/1
2	FUC	L	5[A]	2	-	-	0/1/1/1
2	FUC	L	5[B]	7	-	-	0/1/1/1
2	NDG	M	1	2	-	2/6/26/26	0/1/1/1
2	GAL	M	2	2	-	1/2/19/22	0/1/1/1
2	FUC	M	3	2	-	-	0/1/1/1
2	A2G	M	4	2	-	0/6/23/26	0/1/1/1
2	FUC	M	5	2	-	-	0/1/1/1

The worst 5 of 23 bond length outliers are listed below:

Mol	Chain	Res	Type	Atoms	Z	Observed(Å)	Ideal(Å)
2	K	3	FUC	O5-C1	4.13	1.50	1.43
2	M	4	A2G	O5-C1	4.08	1.50	1.43
2	K	4	A2G	O5-C1	3.99	1.50	1.43
2	L	4[A]	A2G	O5-C5	3.95	1.51	1.43
2	L	4[A]	A2G	O5-C1	3.36	1.49	1.43

The worst 5 of 21 bond angle outliers are listed below:

Mol	Chain	Res	Type	Atoms	Z	Observed(°)	Ideal(°)
2	L	1[A]	NDG	C1-C2-N2	-7.47	102.07	110.73
2	K	1	NDG	C1-C2-N2	-6.53	103.16	110.73
2	M	1	NDG	C1-C2-N2	-6.32	103.41	110.73
2	L	4[B]	A2G	C2-N2-C7	-4.91	116.32	122.90
2	L	4[A]	A2G	C2-N2-C7	-3.42	118.31	122.90

There are no chirality outliers.

5 of 11 torsion outliers are listed below:

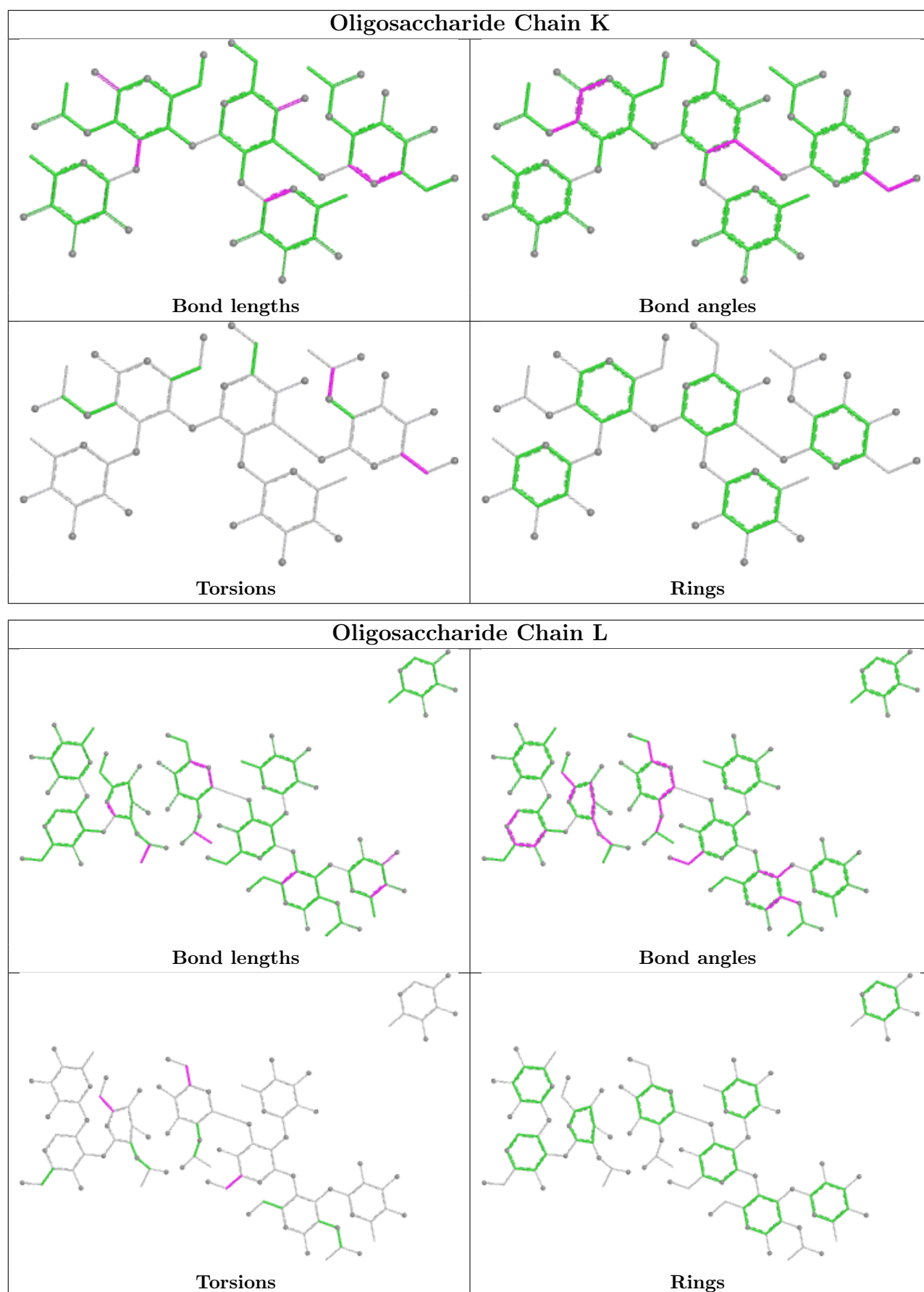
Mol	Chain	Res	Type	Atoms
2	M	1	NDG	O5-C5-C6-O6
2	K	4	A2G	O7-C7-N2-C2
2	K	4	A2G	C8-C7-N2-C2
2	L	4[A]	A2G	C4-C5-C6-O6
2	K	4	A2G	O5-C5-C6-O6

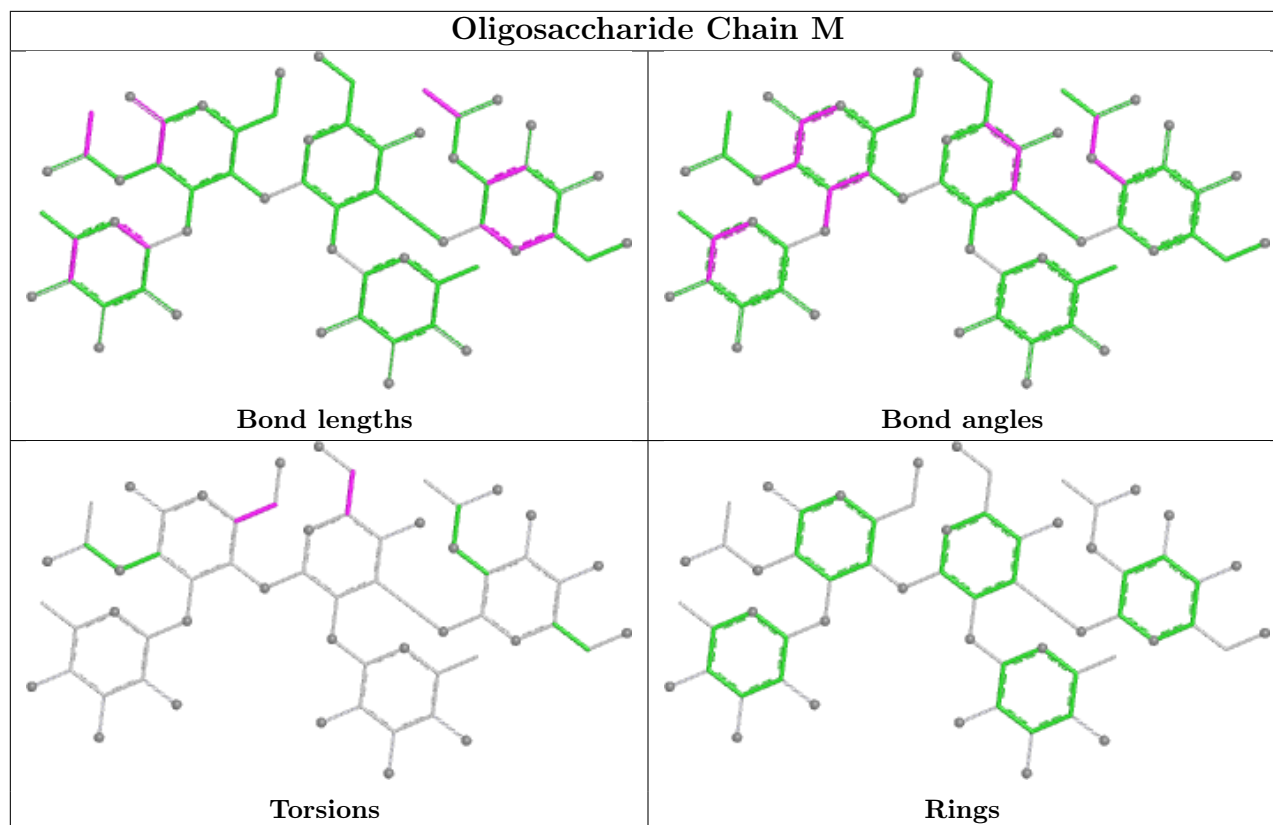
There are no ring outliers.

6 monomers are involved in 11 short contacts:

Mol	Chain	Res	Type	Clashes	Symm-Clashes
2	M	4	A2G	3	0
2	L	1[A]	NDG	1	0
2	L	2[B]	GAL	4	0
2	L	4[B]	A2G	4	0
2	K	1	NDG	1	0
2	M	1	NDG	2	0

The following is a two-dimensional graphical depiction of Mogul quality analysis of bond lengths, bond angles, torsion angles, and ring geometry for oligosaccharide.





## 5.6 Ligand geometry [i](#)

Of 26 ligands modelled in this entry, 10 are monoatomic - leaving 16 for Mogul analysis.

In the following table, the Counts columns list the number of bonds (or angles) for which Mogul statistics could be retrieved, the number of bonds (or angles) that are observed in the model and the number of bonds (or angles) that are defined in the Chemical Component Dictionary. The Link column lists molecule types, if any, to which the group is linked. The Z score for a bond length (or angle) is the number of standard deviations the observed value is removed from the expected value. A bond length (or angle) with  $|Z| > 2$  is considered an outlier worth inspection. RMSZ is the root-mean-square of all Z scores of the bond lengths (or angles).

Mol	Type	Chain	Res	Link	Bond lengths			Bond angles		
					Counts	RMSZ	# $ Z  > 2$	Counts	RMSZ	# $ Z  > 2$
5	BCN	D	203	3	10,10,10	0.68	0	11,11,11	0.99	0
5	BCN	B	201	3	10,10,10	0.78	0	11,11,11	2.63	5 (45%)
5	BCN	A	205	3	10,10,10	1.03	0	11,11,11	2.63	5 (45%)
5	BCN	C	201	3	10,10,10	0.70	0	11,11,11	0.78	0
4	FUC	I	201	-	11,11,11	1.03	1 (9%)	16,16,16	1.58	4 (25%)
5	BCN	B	203	3	10,10,10	0.82	0	11,11,11	2.67	5 (45%)
5	BCN	C	203	3	10,10,10	0.95	1 (10%)	11,11,11	0.90	0
5	BCN	E	201	3	10,10,10	0.85	0	11,11,11	2.49	5 (45%)

Mol	Type	Chain	Res	Link	Bond lengths			Bond angles		
					Counts	RMSZ	# Z  > 2	Counts	RMSZ	# Z  > 2
5	BCN	E	203	3	10,10,10	0.85	0	11,11,11	0.78	0
4	FUC	H	201	-	11,11,11	0.85	0	16,16,16	1.37	4 (25%)
5	BCN	A	203	3	10,10,10	0.79	0	11,11,11	2.62	3 (27%)
6	1PE	F	202	-	15,15,15	0.39	0	14,14,14	0.55	0
7	NAG	G	206[B]	2	15,15,15	0.66	0	21,21,21	2.30	2 (9%)
4	FUC	F	201	-	11,11,11	0.83	0	16,16,16	1.45	4 (25%)
5	BCN	D	201	3	10,10,10	0.70	0	11,11,11	2.50	5 (45%)
4	FUC	A	202	-	11,11,11	1.44	2 (18%)	16,16,16	2.44	8 (50%)

In the following table, the Chirals column lists the number of chiral outliers, the number of chiral centers analysed, the number of these observed in the model and the number defined in the Chemical Component Dictionary. Similar counts are reported in the Torsion and Rings columns. '-' means no outliers of that kind were identified.

Mol	Type	Chain	Res	Link	Chirals	Torsions	Rings
5	BCN	D	203	3	-	0/10/10/10	-
5	BCN	B	201	3	-	3/10/10/10	-
5	BCN	A	205	3	-	4/10/10/10	-
5	BCN	B	203	3	-	4/10/10/10	-
5	BCN	C	203	3	-	0/10/10/10	-
5	BCN	E	201	3	-	3/10/10/10	-
5	BCN	E	203	3	-	1/10/10/10	-
4	FUC	I	201	-	-	-	0/1/1/1
4	FUC	H	201	-	-	-	0/1/1/1
5	BCN	A	203	3	-	4/10/10/10	-
6	1PE	F	202	-	-	2/13/13/13	-
4	FUC	A	202	-	-	-	0/1/1/1
7	NAG	G	206[B]	2	-	0/6/26/26	0/1/1/1
4	FUC	F	201	-	-	-	0/1/1/1
5	BCN	D	201	3	-	4/10/10/10	-
5	BCN	C	201	3	-	0/10/10/10	-

All (4) bond length outliers are listed below:

Mol	Chain	Res	Type	Atoms	Z	Observed(Å)	Ideal(Å)
4	A	202	FUC	C1-C2	3.11	1.59	1.52
4	A	202	FUC	O4-C4	2.14	1.48	1.43
5	C	203	BCN	O22-C2	-2.12	1.23	1.30
4	I	201	FUC	O1-C1	2.06	1.46	1.39

The worst 5 of 50 bond angle outliers are listed below:

Mol	Chain	Res	Type	Atoms	Z	Observed(°)	Ideal(°)
7	G	206[B]	NAG	C1-C2-N2	-7.37	102.19	110.73
7	G	206[B]	NAG	C1-O5-C5	-6.19	101.67	113.65
5	A	203	BCN	C1-N1-C3	5.61	125.43	111.91
4	A	202	FUC	O4-C4-C5	5.60	122.08	109.74
5	B	203	BCN	C1-N1-C3	5.48	125.12	111.91

There are no chirality outliers.

5 of 25 torsion outliers are listed below:

Mol	Chain	Res	Type	Atoms
5	A	203	BCN	C4-C3-N1-C1
5	D	201	BCN	C4-C3-N1-C1
5	A	205	BCN	C4-C3-N1-C1
5	B	203	BCN	C4-C3-N1-C1
5	B	201	BCN	C4-C3-N1-C1

There are no ring outliers.

3 monomers are involved in 4 short contacts:

Mol	Chain	Res	Type	Clashes	Symm-Clashes
5	B	201	BCN	1	0
5	B	203	BCN	1	0
7	G	206[B]	NAG	2	0

## 5.7 Other polymers [i](#)

There are no such residues in this entry.

## 5.8 Polymer linkage issues [i](#)

There are no chain breaks in this entry.

## 6 Fit of model and data [i](#)

### 6.1 Protein, DNA and RNA chains [i](#)

In the following table, the column labelled ‘#RSRZ > 2’ contains the number (and percentage) of RSRZ outliers, followed by percent RSRZ outliers for the chain as percentile scores relative to all X-ray entries and entries of similar resolution. The OWAB column contains the minimum, median, 95<sup>th</sup> percentile and maximum values of the occupancy-weighted average B-factor per residue. The column labelled ‘Q < 0.9’ lists the number of (and percentage) of residues with an average occupancy less than 0.9.

Mol	Chain	Analysed	<RSRZ>	#RSRZ>2	OWAB(Å <sup>2</sup> )	Q<0.9
1	A	103/103 (100%)	-0.03	0 <b>100</b> <b>100</b>	11, 21, 35, 42	3 (2%)
1	B	103/103 (100%)	0.22	1 (0%) <b>79</b> <b>83</b>	12, 24, 39, 49	3 (2%)
1	C	103/103 (100%)	0.19	3 (2%) <b>53</b> <b>56</b>	8, 21, 42, 56	4 (3%)
1	D	103/103 (100%)	0.14	2 (1%) <b>66</b> <b>70</b>	13, 21, 39, 52	5 (4%)
1	E	103/103 (100%)	-0.05	2 (1%) <b>66</b> <b>70</b>	10, 20, 36, 43	4 (3%)
1	F	103/103 (100%)	-0.51	1 (0%) <b>79</b> <b>83</b>	11, 14, 24, 39	2 (1%)
1	G	103/103 (100%)	-0.32	1 (0%) <b>79</b> <b>83</b>	7, 16, 27, 50	4 (3%)
1	H	103/103 (100%)	-0.27	1 (0%) <b>79</b> <b>83</b>	7, 16, 26, 36	4 (3%)
1	I	103/103 (100%)	-0.32	0 <b>100</b> <b>100</b>	11, 16, 31, 38	5 (4%)
1	J	103/103 (100%)	-0.48	1 (0%) <b>79</b> <b>83</b>	9, 15, 25, 40	3 (2%)
All	All	1030/1030 (100%)	-0.14	12 (1%) <b>76</b> <b>80</b>	7, 19, 36, 56	37 (3%)

The worst 5 of 12 RSRZ outliers are listed below:

Mol	Chain	Res	Type	RSRZ
1	C	103	ASN	3.5
1	J	103	ASN	3.3
1	B	55	SER	3.1
1	C	55	SER	2.9
1	F	103	ASN	2.5

### 6.2 Non-standard residues in protein, DNA, RNA chains [i](#)

There are no non-standard protein/DNA/RNA residues in this entry.

### 6.3 Carbohydrates [i](#)

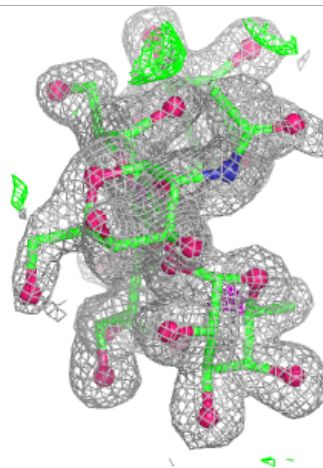
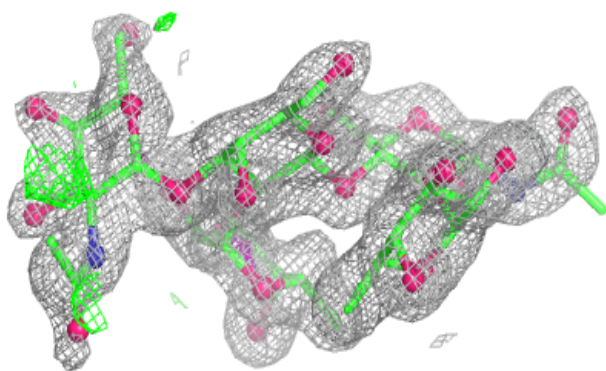
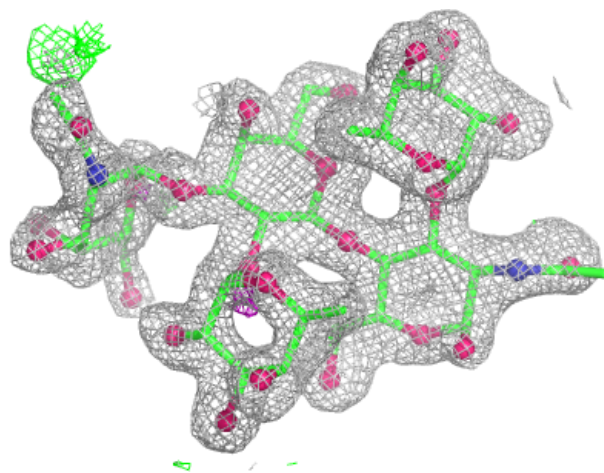
In the following table, the Atoms column lists the number of modelled atoms in the group and the number defined in the chemical component dictionary. The B-factors column lists the minimum, median, 95<sup>th</sup> percentile and maximum values of B factors of atoms in the group. The column labelled 'Q<0.9' lists the number of atoms with occupancy less than 0.9.

Mol	Type	Chain	Res	Atoms	RSCC	RSR	B-factors(Å <sup>2</sup> )	Q<0.9
2	A2G	L	4[A]	14/15	0.65	0.17	31,36,39,40	14
2	A2G	L	4[B]	14/15	0.65	0.17	29,31,32,35	14
2	A2G	M	4	14/15	0.76	0.13	31,38,41,43	0
2	A2G	K	4	14/15	0.80	0.13	36,39,42,50	0
2	NDG	M	1	15/15	0.82	0.12	29,38,45,46	0
2	FUC	M	3	10/11	0.86	0.11	31,34,37,37	0
2	GAL	K	2	11/12	0.90	0.10	26,30,31,33	0
2	FUC	M	5	10/11	0.90	0.10	21,24,28,30	0
2	GAL	M	2	11/12	0.91	0.08	30,32,34,35	0
2	FUC	K	3	10/11	0.91	0.09	23,25,26,27	0
2	NDG	L	1[A]	15/15	0.92	0.08	17,18,25,28	15
2	NDG	K	1	15/15	0.92	0.09	26,30,39,40	0
2	FUC	K	5	10/11	0.93	0.08	22,24,26,27	0
2	FUC	L	5[B]	10/11	0.94	0.07	19,21,23,25	10
2	FUC	L	5[A]	10/11	0.94	0.07	17,20,23,25	10
2	GAL	L	2[B]	11/12	0.96	0.06	18,20,21,23	11
2	FUC	L	3[A]	10/11	0.96	0.06	15,16,16,18	10
2	FUC	L	3[B]	10/11	0.96	0.06	20,20,21,22	10
2	GAL	L	2[A]	11/12	0.96	0.06	16,17,19,22	11

The following is a graphical depiction of the model fit to experimental electron density for oligosaccharide. Each fit is shown from different orientation to approximate a three-dimensional view.

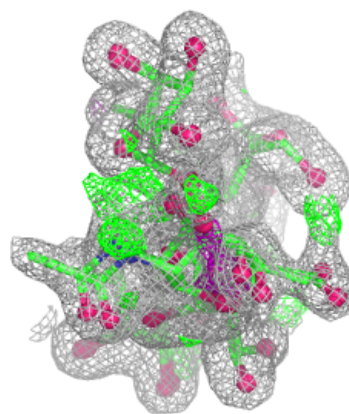
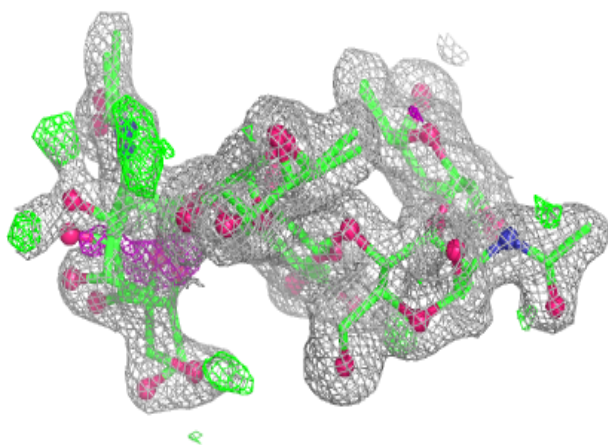
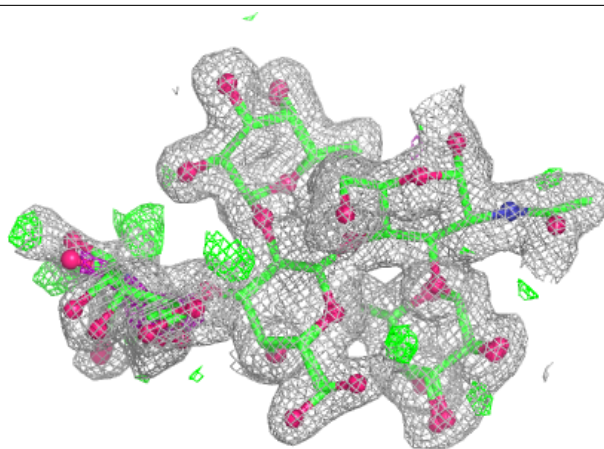
**Electron density around Chain K:**

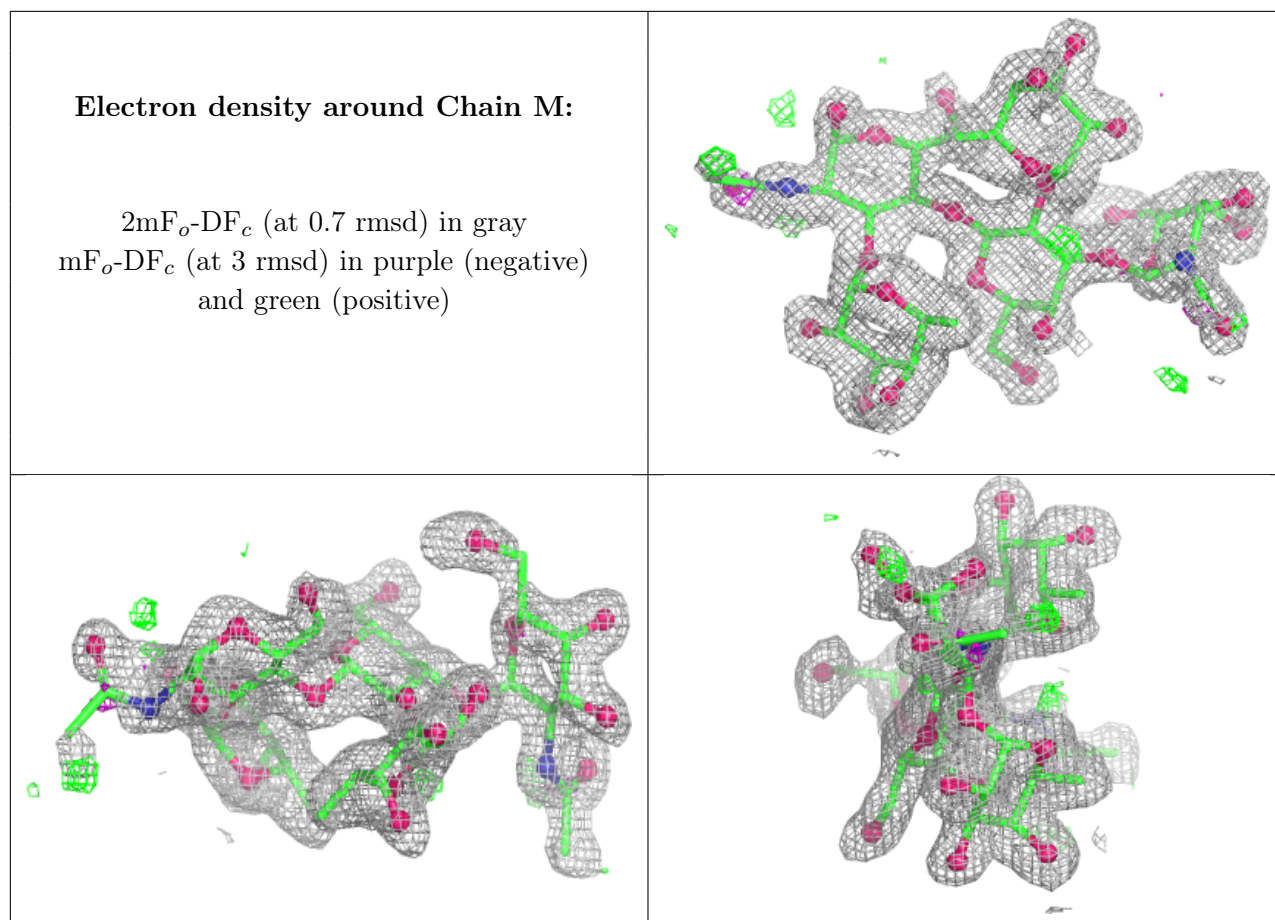
$2mF_o-DF_c$  (at 0.7 rmsd) in gray  
 $mF_o-DF_c$  (at 3 rmsd) in purple (negative)  
and green (positive)



**Electron density around Chain L:**

$2mF_o-DF_c$  (at 0.7 rmsd) in gray  
 $mF_o-DF_c$  (at 3 rmsd) in purple (negative)  
and green (positive)





## 6.4 Ligands [i](#)

In the following table, the Atoms column lists the number of modelled atoms in the group and the number defined in the chemical component dictionary. The B-factors column lists the minimum, median, 95<sup>th</sup> percentile and maximum values of B factors of atoms in the group. The column labelled 'Q< 0.9' lists the number of atoms with occupancy less than 0.9.

Mol	Type	Chain	Res	Atoms	RSCC	RSR	B-factors(Å <sup>2</sup> )	Q<0.9
4	FUC	H	201	11/11	0.78	0.19	25,32,37,43	11
4	FUC	A	202	11/11	0.79	0.16	29,37,41,44	0
7	NAG	G	206[B]	15/15	0.80	0.11	21,22,27,27	15
4	FUC	F	201	11/11	0.85	0.13	21,28,34,37	11
6	1PE	F	202	16/16	0.88	0.12	34,38,42,45	0
5	BCN	B	201	11/11	0.91	0.10	19,23,24,25	0
4	FUC	I	201	11/11	0.93	0.07	21,23,27,28	0
5	BCN	A	203	11/11	0.93	0.09	18,23,25,26	0
5	BCN	A	205	11/11	0.93	0.08	16,22,27,29	0
5	BCN	B	203	11/11	0.94	0.08	19,25,31,33	0
5	BCN	E	201	11/11	0.95	0.07	19,23,27,27	0
5	BCN	E	203	11/11	0.95	0.08	17,21,29,29	0

*Continued on next page...*

*Continued from previous page...*

Mol	Type	Chain	Res	Atoms	RSCC	RSR	B-factors(Å <sup>2</sup> )	Q<0.9
5	BCN	C	203	11/11	0.95	0.07	16,20,25,25	0
5	BCN	D	201	11/11	0.95	0.08	15,24,26,28	0
5	BCN	C	201	11/11	0.96	0.07	18,21,22,23	0
5	BCN	D	203	11/11	0.98	0.05	17,21,24,24	0
3	CA	C	204	1/1	0.99	0.02	15,15,15,15	0
3	CA	E	202	1/1	0.99	0.02	13,13,13,13	0
3	CA	B	202	1/1	0.99	0.03	15,15,15,15	0
3	CA	A	204	1/1	1.00	0.03	14,14,14,14	0
3	CA	D	202	1/1	1.00	0.01	14,14,14,14	0
3	CA	D	204	1/1	1.00	0.02	14,14,14,14	0
3	CA	A	201	1/1	1.00	0.02	14,14,14,14	0
3	CA	E	204	1/1	1.00	0.02	14,14,14,14	0
3	CA	B	204	1/1	1.00	0.04	13,13,13,13	0
3	CA	C	202	1/1	1.00	0.02	15,15,15,15	0

## 6.5 Other polymers [i](#)

There are no such residues in this entry.