



wwPDB EM Validation Summary Report ⓘ

Mar 12, 2026 – 09:17 AM UTC

PDB ID : 3EPF / pdb_00003epf
EMDB ID : EMD-1563
Title : CryoEM structure of poliovirus receptor bound to poliovirus type 2
Authors : Zhang, P.; Mueller, S.; Morais, M.C.; Bator, C.M.; Bowman, V.D.; Hafenstein, S.; Wimmer, E.; Rossmann, M.G.
Deposited on : 2008-09-29
Resolution : 9.00 Å(reported)

This is a wwPDB EM Validation Summary Report for a publicly released PDB entry.

We welcome your comments at validation@mail.wwpdb.org

A user guide is available at

<https://www.wwpdb.org/validation/2017/EMValidationReportHelp>

with specific help available everywhere you see the ⓘ symbol.

The types of validation reports are described at

<http://www.wwpdb.org/validation/2017/FAQs#types>.

The following versions of software and data (see [references ⓘ](#)) were used in the production of this report:

EMDB validation analysis : 0.0.1.dev132
Mogul : 2022.3.0, CSD as543be (2022)
MolProbity : 4-5-2 with Phenix2.0
Buster-report : wwPDB partial adaption of 1.1.7 (2018)
Percentile statistics : 20250101.v01 (using entries in the PDB archive January 1st 2025)
EM percentile statistics : **NOT EXECUTED**
MapQ : **FAILED**
Ideal geometry (proteins) : Engh & Huber (2001)
Ideal geometry (DNA, RNA) : Parkinson et al. (1996)
Validation Pipeline (wwPDB-VP) : 2.49

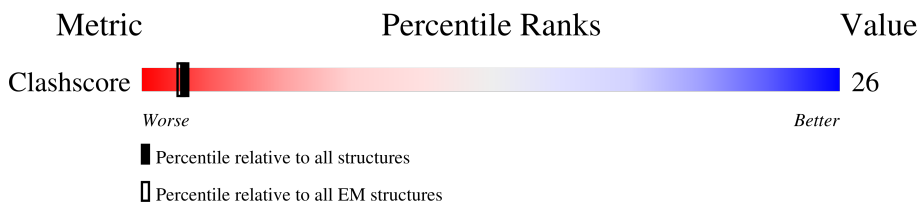
1 Overall quality at a glance

The following experimental techniques were used to determine the structure:

ELECTRON MICROSCOPY

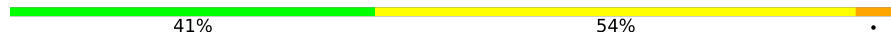



The reported resolution of this entry is 9.00 Å.

Percentile scores (ranging between 0-100) for global validation metrics of the entry are shown in the following graphic. The table shows the number of entries on which the scores are based.



| Metric | Whole archive (#Entries) | EM structures (#Entries) |
|------------|-----------------------------|-----------------------------|
| Clashscore | 229148 | 23984 |

The table below summarises the geometric issues observed across the polymeric chains and their fit to the map. The red, orange, yellow and green segments of the bar indicate the fraction of residues that contain outliers for ≥ 3 , 2, 1 and 0 types of geometric quality criteria respectively. A grey segment represents the fraction of residues that are not modelled. The numeric value for each fraction is indicated below the corresponding segment, with a dot representing fractions $\leq 5\%$.

| Mol | Chain | Length | Quality of chain |
|-----|-------|--------|--|
| 1 | R | 213 |  |
| 2 | 1 | 278 |  |
| 3 | 2 | 262 |  |
| 4 | 4 | 68 |  |
| 5 | 3 | 235 |  |

2 Entry composition [i](#)

There are 8 unique types of molecules in this entry. The entry contains 8461 atoms, of which 0 are hydrogens and 0 are deuteriums.

In the tables below, the AltConf column contains the number of residues with at least one atom in alternate conformation and the Trace column contains the number of residues modelled with at most 2 atoms.

- Molecule 1 is a protein called Poliovirus receptor.

| Mol | Chain | Residues | Atoms | | | | | AltConf | Trace |
|-----|-------|----------|-------|------|-----|-----|---|---------|-------|
| | | | Total | C | N | O | S | | |
| 1 | R | 213 | 1638 | 1038 | 281 | 310 | 9 | 0 | 0 |

There are 5 discrepancies between the modelled and reference sequences:

| Chain | Residue | Modelled | Actual | Comment | Reference |
|-------|---------|----------|--------|---------------------|------------|
| R | 105 | ASP | ASN | engineered mutation | UNP P15151 |
| R | 120 | SER | ASN | engineered mutation | UNP P15151 |
| R | 188 | GLN | ASN | engineered mutation | UNP P15151 |
| R | 218 | GLN | ASN | engineered mutation | UNP P15151 |
| R | 237 | SER | ASN | engineered mutation | UNP P15151 |

- Molecule 2 is a protein called Protein VP1.

| Mol | Chain | Residues | Atoms | | | | | AltConf | Trace |
|-----|-------|----------|-------|------|-----|-----|---|---------|-------|
| | | | Total | C | N | O | S | | |
| 2 | 1 | 272 | 2129 | 1361 | 363 | 400 | 5 | 0 | 0 |

- Molecule 3 is a protein called Protein VP2.

| Mol | Chain | Residues | Atoms | | | | | AltConf | Trace |
|-----|-------|----------|-------|------|-----|-----|----|---------|-------|
| | | | Total | C | N | O | S | | |
| 3 | 2 | 262 | 2042 | 1298 | 346 | 384 | 14 | 0 | 0 |

There is a discrepancy between the modelled and reference sequences:

| Chain | Residue | Modelled | Actual | Comment | Reference |
|-------|---------|----------|--------|----------|------------|
| 2 | 11 | VAL | ASP | conflict | UNP P06210 |

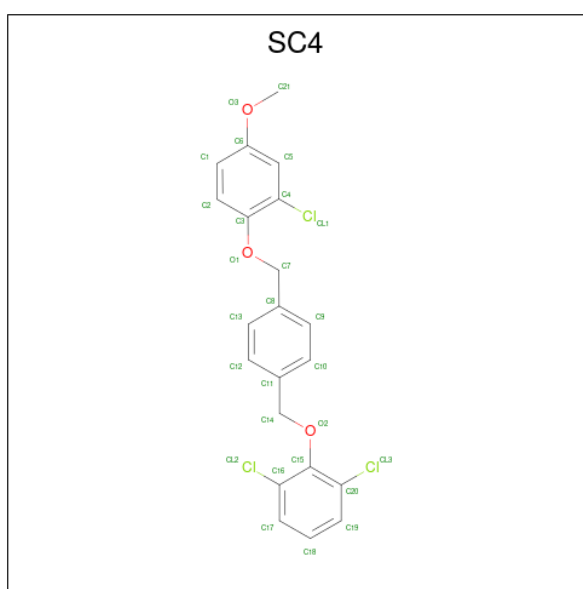
- Molecule 4 is a protein called Protein VP4.

| Mol | Chain | Residues | Atoms | | | | AltConf | Trace |
|-----|-------|----------|-------|-----|----|-----|---------|-------|
| | | | Total | C | N | O | | |
| 4 | 4 | 68 | 518 | 318 | 91 | 109 | 0 | 0 |

- Molecule 5 is a protein called Protein VP3.

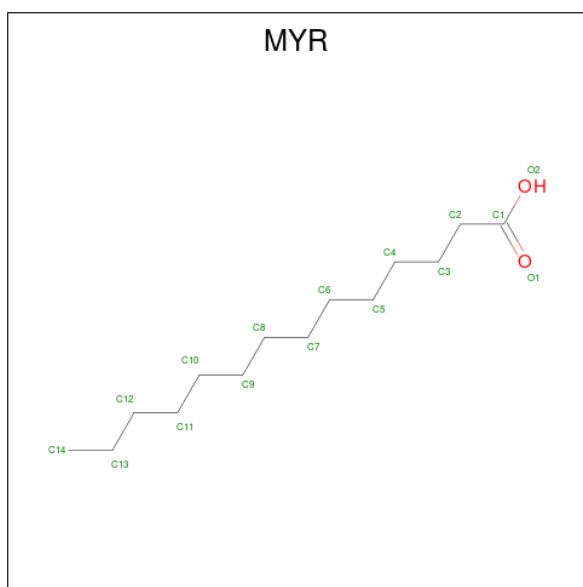
| Mol | Chain | Residues | Atoms | | | | | AltConf | Trace |
|-----|-------|----------|-------|------|-----|-----|----|---------|-------|
| | | | Total | C | N | O | S | | |
| 5 | 3 | 235 | 1825 | 1156 | 303 | 349 | 17 | 0 | 0 |

- Molecule 6 is 1[2-CHLORO-4-METHOXY-PHENYL-OXYMETHYL]-4-[2,6-DICHLORO-PHENYL-OXYMETHYL]-BENZENE (CCD ID: SC4) (formula: C₂₁H₁₇Cl₃O₃).



| Mol | Chain | Residues | Atoms | | | | AltConf |
|-----|-------|----------|-------|----|----|---|---------|
| | | | Total | C | Cl | O | |
| 6 | 1 | 1 | 27 | 21 | 3 | 3 | 0 |

- Molecule 7 is MYRISTIC ACID (CCD ID: MYR) (formula: C₁₄H₂₈O₂).



| Mol | Chain | Residues | Atoms | | | AltConf |
|-----|-------|----------|-------|----|---|---------|
| 7 | 4 | 1 | Total | C | O | 0 |
| | | | 11 | 10 | 1 | |

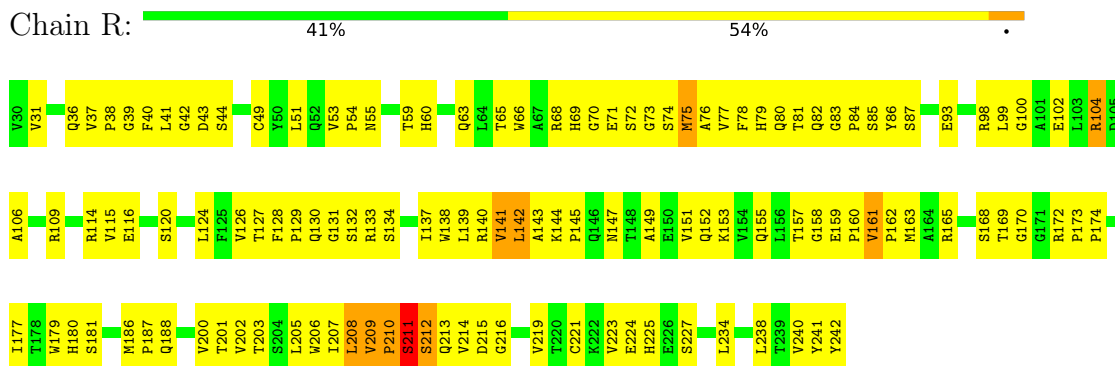
- Molecule 8 is water.

| Mol | Chain | Residues | Atoms | | AltConf |
|-----|-------|----------|-------|-----|---------|
| 8 | 1 | 136 | Total | O | 0 |
| | | | 136 | 136 | |
| 8 | 2 | 95 | Total | O | 0 |
| | | | 95 | 95 | |
| 8 | 4 | 25 | Total | O | 0 |
| | | | 25 | 25 | |
| 8 | 3 | 15 | Total | O | 0 |
| | | | 15 | 15 | |

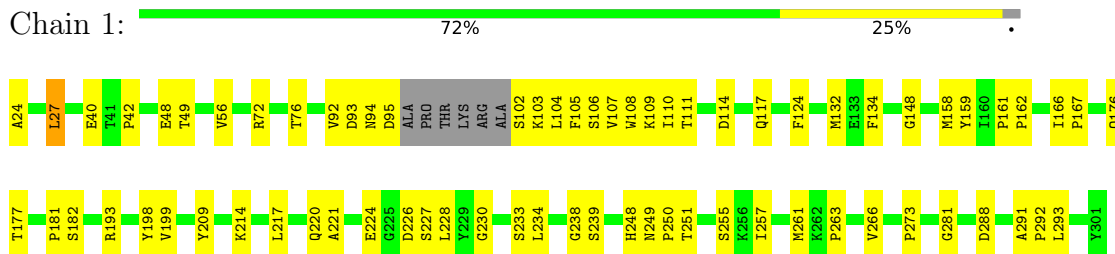
3 Residue-property plots

These plots are drawn for all protein, RNA, DNA and oligosaccharide chains in the entry. The first graphic for a chain summarises the proportions of the various outlier classes displayed in the second graphic. The second graphic shows the sequence view annotated by issues in geometry. Residues are color-coded according to the number of geometric quality criteria for which they contain at least one outlier: green = 0, yellow = 1, orange = 2 and red = 3 or more. Stretches of 2 or more consecutive residues without any outlier are shown as a green connector. Residues present in the sample, but not in the model, are shown in grey.

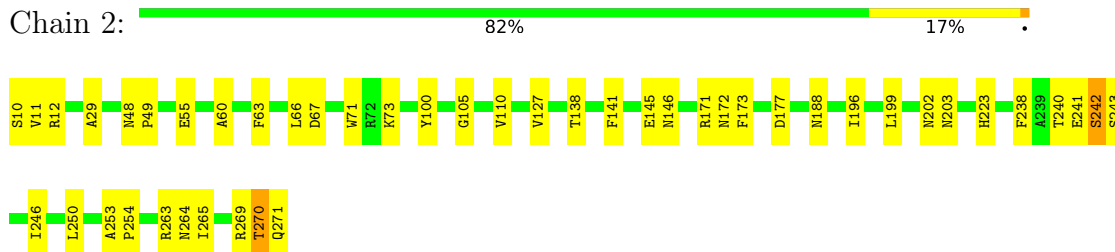
- Molecule 1: Poliovirus receptor



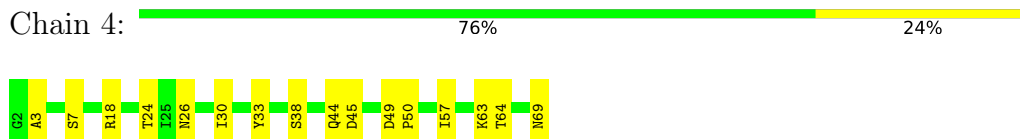
- Molecule 2: Protein VP1




- Molecule 3: Protein VP2



- Molecule 4: Protein VP4



● Molecule 5: Protein VP3

Chain 3:  87% 11%

4 Experimental information

| Property | Value | Source |
|--------------------------------------|------------------------|-----------|
| EM reconstruction method | SINGLE PARTICLE | Depositor |
| Imposed symmetry | POINT, I | Depositor |
| Number of particles used | Not provided | |
| Resolution determination method | Not provided | |
| CTF correction method | Not provided | |
| Microscope | FEI/PHILIPS CM300FEG/T | Depositor |
| Voltage (kV) | 300 | Depositor |
| Electron dose ($e^-/\text{\AA}^2$) | 20 | Depositor |
| Minimum defocus (nm) | 1236 | Depositor |
| Maximum defocus (nm) | 2745 | Depositor |
| Magnification | 47000 | Depositor |
| Image detector | KODAK SO-163 FILM | Depositor |

5 Model quality i

5.1 Standard geometry i

Bond lengths and bond angles in the following residue types are not validated in this section: SC4, MYR

The Z score for a bond length (or angle) is the number of standard deviations the observed value is removed from the expected value. A bond length (or angle) with $|Z| > 5$ is considered an outlier worth inspection. RMSZ is the root-mean-square of all Z scores of the bond lengths (or angles).

| Mol | Chain | Bond lengths | | Bond angles | |
|-----|-------|--------------|---------------|-------------|-----------------|
| | | RMSZ | # Z >5 | RMSZ | # Z >5 |
| 1 | R | 0.60 | 1/1678 (0.1%) | 1.10 | 11/2289 (0.5%) |
| 2 | 1 | 0.55 | 0/2193 | 1.00 | 12/2996 (0.4%) |
| 3 | 2 | 0.54 | 0/2098 | 1.00 | 14/2863 (0.5%) |
| 4 | 4 | 0.60 | 0/527 | 0.99 | 1/713 (0.1%) |
| 5 | 3 | 0.60 | 3/1869 (0.2%) | 0.90 | 6/2549 (0.2%) |
| All | All | 0.57 | 4/8365 (0.0%) | 1.00 | 44/11410 (0.4%) |

Chiral center outliers are detected by calculating the chiral volume of a chiral center and verifying if the center is modelled as a planar moiety or with the opposite hand. A planarity outlier is detected by checking planarity of atoms in a peptide group, atoms in a mainchain group or atoms of a sidechain that are expected to be planar.

| Mol | Chain | #Chirality outliers | #Planarity outliers |
|-----|-------|---------------------|---------------------|
| 1 | R | 1 | 6 |
| 2 | 1 | 0 | 1 |
| All | All | 1 | 7 |

All (4) bond length outliers are listed below:

| Mol | Chain | Res | Type | Atoms | Z | Observed(Å) | Ideal(Å) |
|-----|-------|-----|------|-------|-------|-------------|----------|
| 5 | 3 | 124 | MET | SD-CE | 7.62 | 1.98 | 1.79 |
| 5 | 3 | 149 | MET | SD-CE | -7.45 | 1.60 | 1.79 |
| 1 | R | 211 | SER | C-N | -6.04 | 1.25 | 1.33 |
| 5 | 3 | 136 | PRO | CA-C | 5.29 | 1.54 | 1.51 |

The worst 5 of 44 bond angle outliers are listed below:

| Mol | Chain | Res | Type | Atoms | Z | Observed(°) | Ideal(°) |
|-----|-------|-----|------|--------|--------|-------------|----------|
| 1 | R | 211 | SER | O-C-N | -10.91 | 109.01 | 123.19 |
| 1 | R | 209 | VAL | CA-C-N | 10.24 | 132.64 | 119.84 |

Continued on next page...

Continued from previous page...

| Mol | Chain | Res | Type | Atoms | Z | Observed(°) | Ideal(°) |
|-----|-------|-----|------|--------|-------|-------------|----------|
| 1 | R | 209 | VAL | C-N-CA | 10.24 | 132.64 | 119.84 |
| 1 | R | 37 | VAL | N-CA-C | 9.04 | 118.03 | 107.73 |
| 2 | 1 | 266 | VAL | N-CA-C | 8.54 | 120.83 | 109.21 |

All (1) chirality outliers are listed below:

| Mol | Chain | Res | Type | Atom |
|-----|-------|-----|------|------|
| 1 | R | 143 | ALA | CA |

5 of 7 planarity outliers are listed below:

| Mol | Chain | Res | Type | Group |
|-----|-------|-----|------|-----------|
| 1 | R | 141 | VAL | Peptide |
| 1 | R | 142 | LEU | Peptide |
| 1 | R | 210 | PRO | Peptide |
| 1 | R | 211 | SER | Peptide |
| 1 | R | 212 | SER | Mainchain |

5.2 Too-close contacts

In the following table, the Non-H and H(model) columns list the number of non-hydrogen atoms and hydrogen atoms in the chain respectively. The H(added) column lists the number of hydrogen atoms added and optimized by MolProbity. The Clashes column lists the number of clashes within the asymmetric unit, whereas Symm-Clashes lists symmetry-related clashes.

| Mol | Chain | Non-H | H(model) | H(added) | Clashes | Symm-Clashes |
|-----|-------|-------|----------|----------|---------|--------------|
| 1 | R | 1638 | 0 | 1617 | 327 | 0 |
| 2 | 1 | 2129 | 0 | 2068 | 161 | 0 |
| 3 | 2 | 2042 | 0 | 1969 | 37 | 0 |
| 4 | 4 | 518 | 0 | 495 | 12 | 0 |
| 5 | 3 | 1825 | 0 | 1800 | 57 | 0 |
| 6 | 1 | 27 | 0 | 17 | 3 | 0 |
| 7 | 4 | 11 | 0 | 16 | 0 | 0 |
| 8 | 1 | 136 | 0 | 0 | 8 | 0 |
| 8 | 2 | 95 | 0 | 0 | 1 | 0 |
| 8 | 3 | 15 | 0 | 0 | 1 | 0 |
| 8 | 4 | 25 | 0 | 0 | 1 | 0 |
| All | All | 8461 | 0 | 7982 | 422 | 0 |

The all-atom clashscore is defined as the number of clashes found per 1000 atoms (including hydrogen atoms). The all-atom clashscore for this structure is 26.

The worst 5 of 422 close contacts within the same asymmetric unit are listed below, sorted by their clash magnitude.

| Atom-1 | Atom-2 | Interatomic distance (Å) | Clash overlap (Å) |
|------------------|------------------|--------------------------|-------------------|
| 1:R:130:GLN:CG | 2:1:106:SER:HA | 1.13 | 1.55 |
| 1:R:130:GLN:CG | 2:1:106:SER:CA | 1.86 | 1.54 |
| 1:R:115:VAL:HG11 | 1:R:142:LEU:CD1 | 1.28 | 1.53 |
| 1:R:130:GLN:NE2 | 2:1:105:PHE:CE1 | 1.76 | 1.52 |
| 1:R:115:VAL:CG1 | 1:R:142:LEU:HD11 | 1.03 | 1.50 |

There are no symmetry-related clashes.

5.3 Torsion angles [i](#)

5.3.1 Protein backbone [i](#)

There are no protein backbone outliers to report in this entry.

5.3.2 Protein sidechains [i](#)

There are no protein residues with a non-rotameric sidechain to report in this entry.

5.3.3 RNA [i](#)

There are no RNA molecules in this entry.

5.4 Non-standard residues in protein, DNA, RNA chains [i](#)

There are no non-standard protein/DNA/RNA residues in this entry.

5.5 Carbohydrates [i](#)

There are no oligosaccharides in this entry.

5.6 Ligand geometry [i](#)

2 ligands are modelled in this entry.

In the following table, the Counts columns list the number of bonds (or angles) for which Mogul statistics could be retrieved, the number of bonds (or angles) that are observed in the model and

the number of bonds (or angles) that are defined in the Chemical Component Dictionary. The Link column lists molecule types, if any, to which the group is linked. The Z score for a bond length (or angle) is the number of standard deviations the observed value is removed from the expected value. A bond length (or angle) with $|Z| > 2$ is considered an outlier worth inspection. RMSZ is the root-mean-square of all Z scores of the bond lengths (or angles).

| Mol | Type | Chain | Res | Link | Bond lengths | | | Bond angles | | |
|-----|------|-------|-----|------|--------------|------|----------|-------------|------|----------|
| | | | | | Counts | RMSZ | # Z > 2 | Counts | RMSZ | # Z > 2 |
| 6 | SC4 | 1 | 999 | - | 29,29,29 | 1.40 | 5 (17%) | 39,39,39 | 1.41 | 5 (12%) |
| 7 | MYR | 4 | 1 | 4 | 9,10,15 | 0.60 | 0 | 8,9,15 | 0.52 | 0 |

In the following table, the Chirals column lists the number of chiral outliers, the number of chiral centers analysed, the number of these observed in the model and the number defined in the Chemical Component Dictionary. Similar counts are reported in the Torsion and Rings columns. '-' means no outliers of that kind were identified.

| Mol | Type | Chain | Res | Link | Chirals | Torsions | Rings |
|-----|------|-------|-----|------|---------|------------|---------|
| 6 | SC4 | 1 | 999 | - | - | 0/12/12/12 | 0/3/3/3 |
| 7 | MYR | 4 | 1 | 4 | - | 6/8/8/13 | - |

All (5) bond length outliers are listed below:

| Mol | Chain | Res | Type | Atoms | Z | Observed(Å) | Ideal(Å) |
|-----|-------|-----|------|---------|------|-------------|----------|
| 6 | 1 | 999 | SC4 | C5-C6 | 3.55 | 1.44 | 1.39 |
| 6 | 1 | 999 | SC4 | C18-C19 | 2.61 | 1.43 | 1.38 |
| 6 | 1 | 999 | SC4 | C15-C16 | 2.44 | 1.45 | 1.41 |
| 6 | 1 | 999 | SC4 | C18-C17 | 2.36 | 1.42 | 1.38 |
| 6 | 1 | 999 | SC4 | C3-C4 | 2.14 | 1.43 | 1.39 |

All (5) bond angle outliers are listed below:

| Mol | Chain | Res | Type | Atoms | Z | Observed(°) | Ideal(°) |
|-----|-------|-----|------|-------------|-------|-------------|----------|
| 6 | 1 | 999 | SC4 | O1-C3-C4 | 4.62 | 121.89 | 116.39 |
| 6 | 1 | 999 | SC4 | C21-O3-C6 | 2.83 | 123.56 | 117.50 |
| 6 | 1 | 999 | SC4 | O1-C3-C2 | -2.73 | 117.99 | 123.95 |
| 6 | 1 | 999 | SC4 | C15-C16-CL2 | 2.41 | 121.58 | 118.40 |
| 6 | 1 | 999 | SC4 | C15-C20-CL3 | 2.29 | 121.42 | 118.40 |

There are no chirality outliers.

5 of 6 torsion outliers are listed below:

| Mol | Chain | Res | Type | Atoms |
|-----|-------|-----|------|-------------|
| 7 | 4 | 1 | MYR | O1-C1-C2-C3 |

Continued on next page...

Continued from previous page...

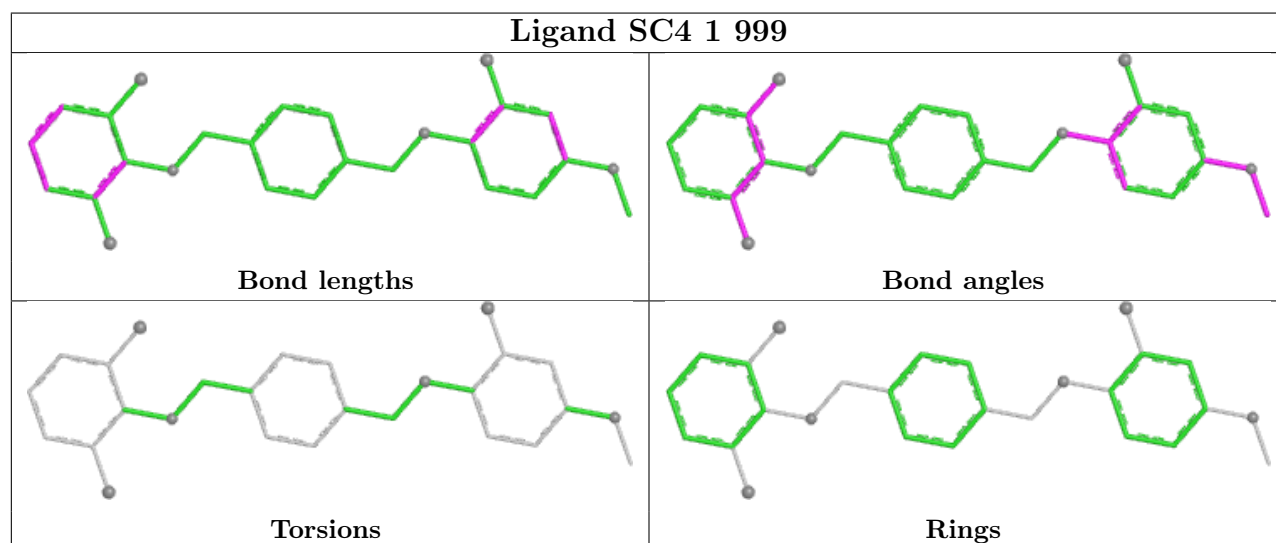
| Mol | Chain | Res | Type | Atoms |
|-----|-------|-----|------|-------------|
| 7 | 4 | 1 | MYR | C1-C2-C3-C4 |
| 7 | 4 | 1 | MYR | C6-C7-C8-C9 |
| 7 | 4 | 1 | MYR | C5-C6-C7-C8 |
| 7 | 4 | 1 | MYR | C4-C5-C6-C7 |

There are no ring outliers.

1 monomer is involved in 3 short contacts:

| Mol | Chain | Res | Type | Clashes | Symm-Clashes |
|-----|-------|-----|------|---------|--------------|
| 6 | 1 | 999 | SC4 | 3 | 0 |

The following is a two-dimensional graphical depiction of Mogul quality analysis of bond lengths, bond angles, torsion angles, and ring geometry for all instances of the Ligand of Interest. In addition, ligands with molecular weight > 250 and outliers as shown on the validation Tables will also be included. For torsion angles, if less than 5% of the Mogul distribution of torsion angles is within 10 degrees of the torsion angle in question, then that torsion angle is considered an outlier. Any bond that is central to one or more torsion angles identified as an outlier by Mogul will be highlighted in the graph. For rings, the root-mean-square deviation (RMSD) between the ring in question and similar rings identified by Mogul is calculated over all ring torsion angles. If the average RMSD is greater than 60 degrees and the minimal RMSD between the ring in question and any Mogul-identified rings is also greater than 60 degrees, then that ring is considered an outlier. The outliers are highlighted in purple. The color gray indicates Mogul did not find sufficient equivalents in the CSD to analyse the geometry.



5.7 Other polymers [i](#)

There are no such residues in this entry.

5.8 Polymer linkage issues

There are no chain breaks in this entry.

6 Map visualisation

This section contains visualisations of the EMDB entry EMD-1563. These allow visual inspection of the internal detail of the map and identification of artifacts.

No raw map or half-maps were deposited for this entry and therefore no images, graphs, etc. pertaining to the raw map can be shown.

6.1 Orthogonal projections

This section was not generated.

6.2 Central slices

This section was not generated.

6.3 Largest variance slices

This section was not generated.

6.4 Orthogonal standard-deviation projections (False-color)

This section was not generated.

6.5 Orthogonal surface views

This section was not generated.

6.6 Mask visualisation

This section was not generated. No masks/segmentation were deposited.

7 Map analysis

This section contains the results of statistical analysis of the map.

7.1 Map-value distribution

This section was not generated.

7.2 Volume estimate versus contour level

This section was not generated.

7.3 Rotationally averaged power spectrum

This section was not generated. The rotationally averaged power spectrum had issues being displayed.

8 Fourier-Shell correlation

This section was not generated. No FSC curve or half-maps provided.

9 Map-model fit

This section was not generated.