



# wwPDB X-ray Structure Validation Summary Report ⓘ

Mar 5, 2026 – 04:56 PM UTC

PDB ID : 5EQC / pdb\_00005eqc  
Title : Structure of the ornithine aminotransferase from *Toxoplasma gondii* crystallized in presence of oxidized glutathione reveals partial occupancy of PLP at the protein active site  
Authors : Filippova, E.V.; Minasov, G.; Flores, K.; Le, H.V.; Silverman, R.B.; McLeod, R.L.; Anderson, W.F.; Center for Structural Genomics of Infectious Diseases (CSGID)  
Deposited on : 2015-11-12  
Resolution : 2.20 Å (reported)

This is a wwPDB X-ray Structure Validation Summary Report for a publicly released PDB entry.

We welcome your comments at [validation@mail.wwpdb.org](mailto:validation@mail.wwpdb.org)

A user guide is available at

<https://www.wwpdb.org/validation/2017/XrayValidationReportHelp>

with specific help available everywhere you see the ⓘ symbol.

The types of validation reports are described at

<http://www.wwpdb.org/validation/2017/FAQs#types>.

---

The following versions of software and data (see [references ⓘ](#)) were used in the production of this report:

MolProbity : 4-5-2 with Phenix2.0  
Mogul : 2022.3.0, CSD as543be (2022)  
Xtriage (Phenix) : 2.0  
EDS : 3.0  
Percentile statistics : 20250101.v01 (using entries in the PDB archive January 1st 2025)  
CCP4 : 9.0.010 (Gargrove)  
Density-Fitness : 1.0.12  
Ideal geometry (proteins) : Engh & Huber (2001)  
Ideal geometry (DNA, RNA) : Parkinson et al. (1996)

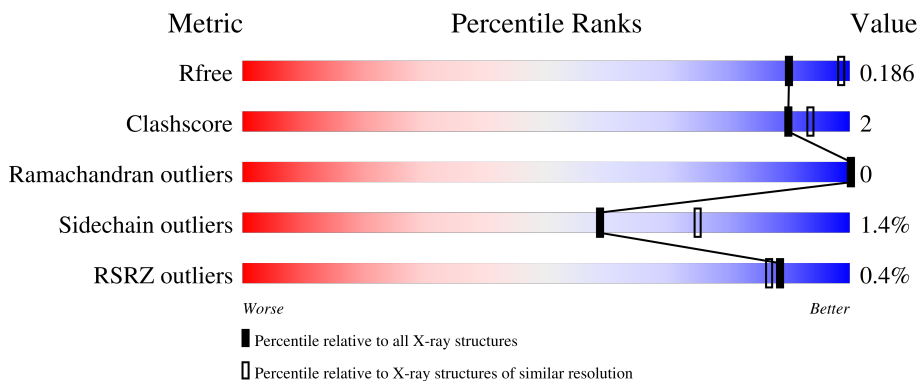
# 1 Overall quality at a glance

The following experimental techniques were used to determine the structure:

*X-RAY DIFFRACTION*

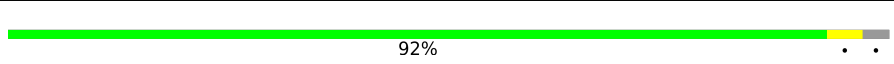
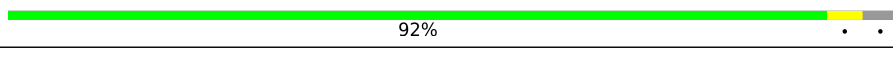
The reported resolution of this entry is 2.20 Å.

Percentile scores (ranging between 0-100) for global validation metrics of the entry are shown in the following graphic. The table shows the number of entries on which the scores are based.



Metric	Whole archive (#Entries)	Similar resolution (#Entries, resolution range(Å))
$R_{free}$	180053	6164 (2.20-2.20)
Clashscore	190562	6851 (2.20-2.20)
Ramachandran outliers	187476	6768 (2.20-2.20)
Sidechain outliers	187428	6769 (2.20-2.20)
RSRZ outliers	180081	6166 (2.20-2.20)

The table below summarises the geometric issues observed across the polymeric chains and their fit to the electron density. The red, orange, yellow and green segments of the lower bar indicate the fraction of residues that contain outliers for  $\geq 3$ , 2, 1 and 0 types of geometric quality criteria respectively. A grey segment represents the fraction of residues that are not modelled. The numeric value for each fraction is indicated below the corresponding segment, with a dot representing fractions  $\leq 5\%$ . The upper red bar (where present) indicates the fraction of residues that have poor fit to the electron density. The numeric value is given above the bar.

Mol	Chain	Length	Quality of chain
1	A	441	 92%
1	B	441	 92%

The following table lists non-polymeric compounds, carbohydrate monomers and non-standard residues in protein, DNA, RNA chains that are outliers for geometric or electron-density-fit crite-

Validation Pipeline (wwPDB-VP) : 2.49

ria:

Mol	Type	Chain	Res	Chirality	Geometry	Clashes	Electron density
5	PEG	A	504[A]	-	-	X	-
6	PLP	A	507[B]	-	-	X	-
7	BTB	B	504	-	X	-	-

## 2 Entry composition [i](#)

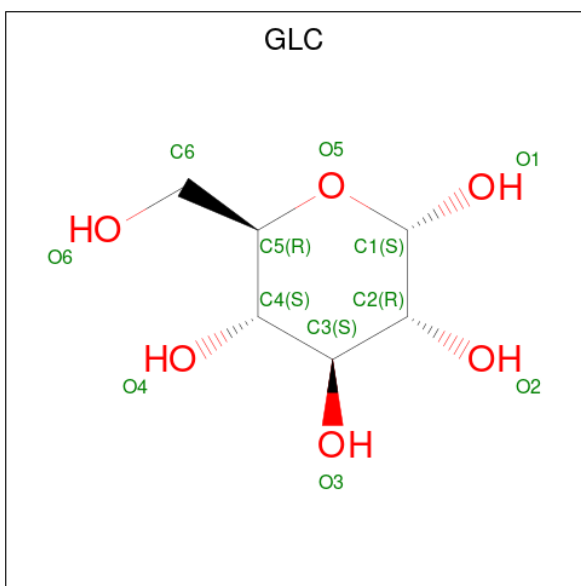
There are 9 unique types of molecules in this entry. The entry contains 7231 atoms, of which 0 are hydrogens and 0 are deuteriums.

In the tables below, the ZeroOcc column contains the number of atoms modelled with zero occupancy, the AltConf column contains the number of residues with at least one atom in alternate conformation and the Trace column contains the number of residues modelled with at most 2 atoms.

- Molecule 1 is a protein called Ornithine aminotransferase, mitochondrial.

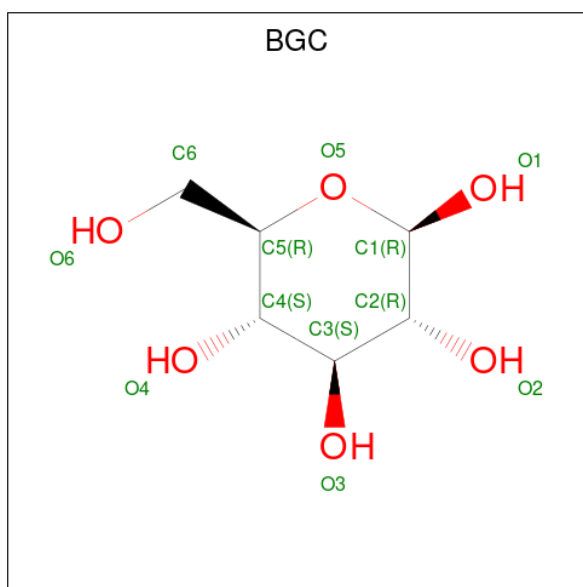
Mol	Chain	Residues	Atoms					ZeroOcc	AltConf	Trace
			Total	C	N	O	S			
1	A	426	Total 3341	C 2104	N 593	O 622	S 22	0	5	0
1	B	422	Total 3309	C 2083	N 587	O 618	S 21	0	4	0

- Molecule 2 is alpha-D-glucopyranose (CCD ID: GLC) (formula: C<sub>6</sub>H<sub>12</sub>O<sub>6</sub>).



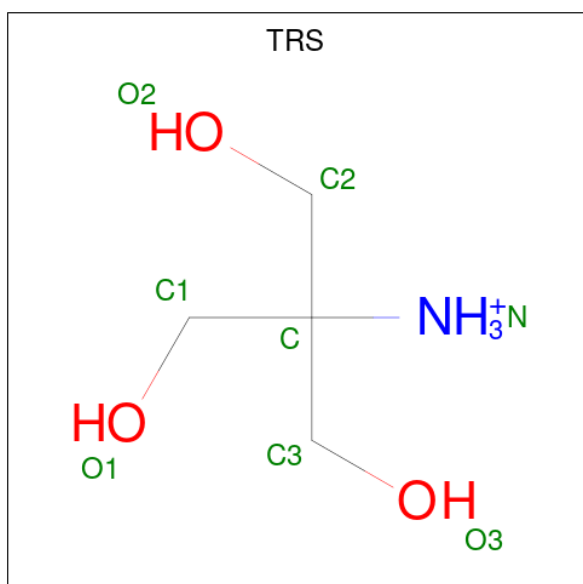
Mol	Chain	Residues	Atoms			ZeroOcc	AltConf
			Total	C	O		
2	A	1	Total 12	C 6	O 6	0	0

- Molecule 3 is beta-D-glucopyranose (CCD ID: BGC) (formula: C<sub>6</sub>H<sub>12</sub>O<sub>6</sub>).



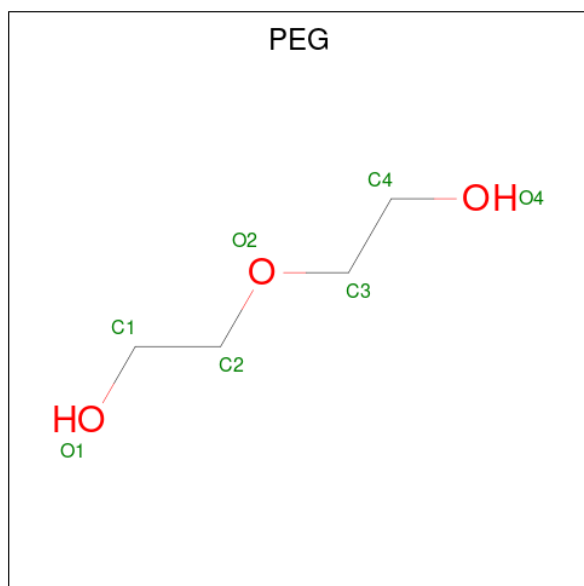
Mol	Chain	Residues	Atoms	ZeroOcc	AltConf
3	A	1	Total C O 11 6 5	0	0
3	B	1	Total C O 12 6 6	0	0
3	B	1	Total C O 12 6 6	0	0
3	B	1	Total C O 10 5 5	0	0

- Molecule 4 is 2-AMINO-2-HYDROXYMETHYL-PROPANE-1,3-DIOL (CCD ID: TRS) (formula: C<sub>4</sub>H<sub>12</sub>NO<sub>3</sub>).



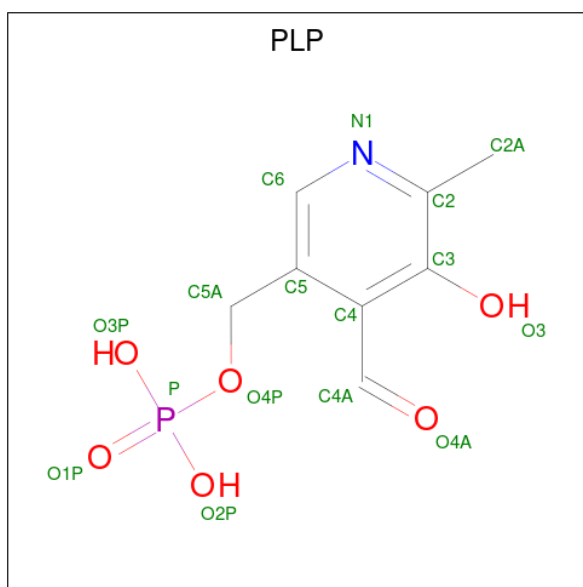
Mol	Chain	Residues	Atoms				ZeroOcc	AltConf
			Total	C	N	O		
4	A	1	8	4	1	3	0	0

- Molecule 5 is DI(HYDROXYETHYL)ETHER (CCD ID: PEG) (formula: C<sub>4</sub>H<sub>10</sub>O<sub>3</sub>).



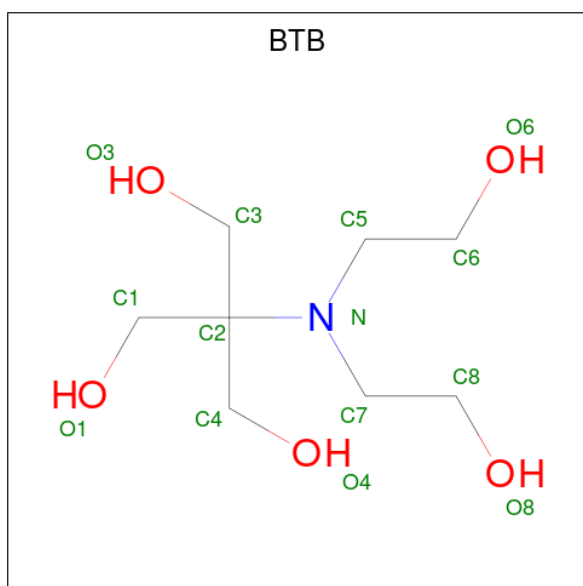
Mol	Chain	Residues	Atoms			ZeroOcc	AltConf
			Total	C	O		
5	A	1	7	4	3	0	1
5	A	1	7	4	3	0	0
5	A	1	7	4	3	0	0
5	B	1	7	4	3	0	1

- Molecule 6 is PYRIDOXAL-5'-PHOSPHATE (CCD ID: PLP) (formula: C<sub>8</sub>H<sub>10</sub>NO<sub>6</sub>P).



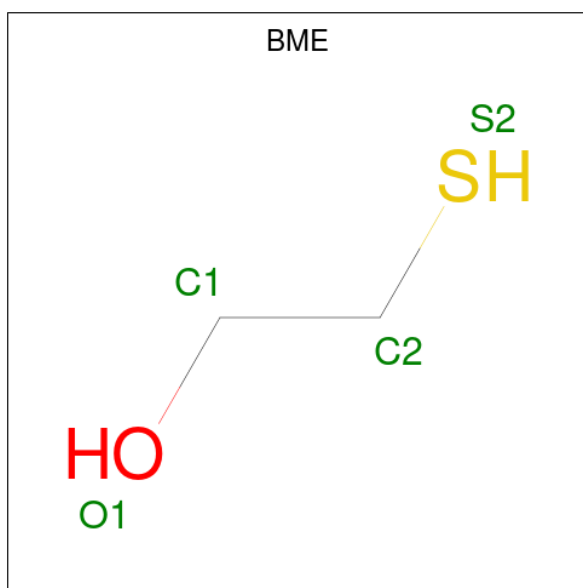
Mol	Chain	Residues	Atoms				ZeroOcc	AltConf	
			Total	C	N	O			P
6	A	1	16	8	1	6	1	0	1
6	B	1	16	8	1	6	1	0	1

- Molecule 7 is 2-[BIS-(2-HYDROXY-ETHYL)-AMINO]-2-HYDROXYMETHYL-PROPAN E-1,3-DIOL (CCD ID: BTB) (formula:  $C_8H_{19}NO_5$ ).



Mol	Chain	Residues	Atoms				ZeroOcc	AltConf
			Total	C	N	O		
7	B	1	11	6	1	4	0	0

- Molecule 8 is BETA-MERCAPTOETHANOL (CCD ID: BME) (formula: C<sub>2</sub>H<sub>6</sub>OS).



Mol	Chain	Residues	Atoms				ZeroOcc	AltConf
			Total	C	O	S		
8	B	1	4	2	1	1	0	0

- Molecule 9 is water.

Mol	Chain	Residues	Atoms		ZeroOcc	AltConf
			Total	O		
9	A	269	270	270	0	2
9	B	169	171	171	0	2

### 3 Residue-property plots [i](#)

These plots are drawn for all protein, RNA, DNA and oligosaccharide chains in the entry. The first graphic for a chain summarises the proportions of the various outlier classes displayed in the second graphic. The second graphic shows the sequence view annotated by issues in geometry and electron density. Residues are color-coded according to the number of geometric quality criteria for which they contain at least one outlier: green = 0, yellow = 1, orange = 2 and red = 3 or more. A red dot above a residue indicates a poor fit to the electron density ( $RSRZ > 2$ ). Stretches of 2 or more consecutive residues without any outlier are shown as a green connector. Residues present in the sample, but not in the model, are shown in grey.

- Molecule 1: Ornithine aminotransferase, mitochondrial

Chain A:  92%



- Molecule 1: Ornithine aminotransferase, mitochondrial

Chain B:  92%



## 4 Data and refinement statistics i

Property	Value	Source
Space group	P 43	Depositor
Cell constants a, b, c, $\alpha$ , $\beta$ , $\gamma$	109.41Å 109.41Å 109.88Å 90.00° 90.00° 90.00°	Depositor
Resolution (Å)	30.00 – 2.20 30.00 – 2.20	Depositor EDS
% Data completeness (in resolution range)	100.0 (30.00-2.20) 100.0 (30.00-2.20)	Depositor EDS
$R_{merge}$	0.11	Depositor
$R_{sym}$	(Not available)	Depositor
$\langle I/\sigma(I) \rangle$ <sup>1</sup>	2.54 (at 2.20Å)	Xtriage
Refinement program	REFMAC 5.8.0131	Depositor
R, $R_{free}$	0.145 , 0.181 0.152 , 0.186	Depositor DCC
$R_{free}$ test set	3219 reflections (4.93%)	wwPDB-VP
Wilson B-factor (Å <sup>2</sup> )	32.8	Xtriage
Anisotropy	0.176	Xtriage
Bulk solvent $k_{sol}$ (e/Å <sup>3</sup> ), $B_{sol}$ (Å <sup>2</sup> )	0.37 , 36.9	EDS
L-test for twinning <sup>2</sup>	$\langle  L  \rangle = 0.50$ , $\langle L^2 \rangle = 0.33$	Xtriage
Estimated twinning fraction	0.010 for -h,-l,-k 0.000 for -h,l,k 0.000 for l,-k,h 0.010 for -l,-k,-h 0.029 for h,-k,-l	Xtriage
$F_o, F_c$ correlation	0.97	EDS
Total number of atoms	7231	wwPDB-VP
Average B, all atoms (Å <sup>2</sup> )	37.0	wwPDB-VP

Xtriage's analysis on translational NCS is as follows: *The largest off-origin peak in the Patterson function is 3.68% of the height of the origin peak. No significant pseudotranslation is detected.*

<sup>1</sup>Intensities estimated from amplitudes.

<sup>2</sup>Theoretical values of  $\langle |L| \rangle$ ,  $\langle L^2 \rangle$  for acentric reflections are 0.5, 0.333 respectively for untwinned datasets, and 0.375, 0.2 for perfectly twinned datasets.

## 5 Model quality [i](#)

### 5.1 Standard geometry [i](#)

Bond lengths and bond angles in the following residue types are not validated in this section: GLC, PEG, BME, BGC, TRS, BTB, PLP

The Z score for a bond length (or angle) is the number of standard deviations the observed value is removed from the expected value. A bond length (or angle) with  $|Z| > 5$  is considered an outlier worth inspection. RMSZ is the root-mean-square of all Z scores of the bond lengths (or angles).

Mol	Chain	Bond lengths		Bond angles	
		RMSZ	# $ Z  > 5$	RMSZ	# $ Z  > 5$
1	A	1.10	2/3404 (0.1%)	1.02	4/4603 (0.1%)
1	B	1.04	3/3370 (0.1%)	1.00	0/4554
All	All	1.07	5/6774 (0.1%)	1.01	4/9157 (0.0%)

All (5) bond length outliers are listed below:

Mol	Chain	Res	Type	Atoms	Z	Observed(Å)	Ideal(Å)
1	A	293	VAL	C-O	-5.97	1.20	1.24
1	B	158	PRO	CA-C	5.93	1.55	1.51
1	B	413	PRO	N-CA	-5.63	1.40	1.47
1	A	90	ARG	C-O	-5.57	1.17	1.24
1	B	44	TYR	CA-C	5.08	1.58	1.52

All (4) bond angle outliers are listed below:

Mol	Chain	Res	Type	Atoms	Z	Observed(°)	Ideal(°)
1	A	52	VAL	N-CA-CB	8.31	118.55	109.99
1	A	52	VAL	CB-CA-C	7.60	118.45	111.00
1	A	158	PRO	N-CA-C	5.47	115.72	110.47
1	A	160	ASP	N-CA-C	5.34	119.63	113.38

There are no chirality outliers.

There are no planarity outliers.

### 5.2 Too-close contacts [i](#)

In the following table, the Non-H and H(model) columns list the number of non-hydrogen atoms and hydrogen atoms in the chain respectively. The H(added) column lists the number of hydrogen atoms added and optimized by MolProbity. The Clashes column lists the number of clashes within

the asymmetric unit, whereas Symm-Clashes lists symmetry-related clashes.

Mol	Chain	Non-H	H(model)	H(added)	Clashes	Symm-Clashes
1	A	3341	0	3348	18	0
1	B	3309	0	3311	6	0
2	A	12	0	12	0	0
3	A	11	0	9	1	0
3	B	34	0	32	1	0
4	A	8	0	12	0	0
5	A	21	0	30	5	0
5	B	7	0	10	1	0
6	A	16	0	7	6	0
6	B	16	0	7	0	0
7	B	11	0	14	0	0
8	B	4	0	5	0	0
9	A	270	0	0	0	0
9	B	171	0	0	1	0
All	All	7231	0	6797	23	0

The all-atom clashscore is defined as the number of clashes found per 1000 atoms (including hydrogen atoms). The all-atom clashscore for this structure is 2.

The worst 5 of 23 close contacts within the same asymmetric unit are listed below, sorted by their clash magnitude.

Atom-1	Atom-2	Interatomic distance (Å)	Clash overlap (Å)
3:B:501:BGC:H6C1	9:B:735:HOH:O	1.54	1.08
1:A:286:LYS:HE3	6:A:507[B]:PLP:H4A	1.37	1.06
1:A:286:LYS:CE	6:A:507[B]:PLP:H4A	2.01	0.91
1:B:366:LYS:HE3	1:B:380:ASP:HA	1.60	0.83
1:A:136:GLY:HA3	5:A:504[A]:PEG:H32	1.78	0.65

There are no symmetry-related clashes.

## 5.3 Torsion angles [i](#)

### 5.3.1 Protein backbone [i](#)

In the following table, the Percentiles column shows the percent Ramachandran outliers of the chain as a percentile score with respect to all X-ray entries followed by that with respect to entries of similar resolution.

The Analysed column shows the number of residues for which the backbone conformation was analysed, and the total number of residues.

Mol	Chain	Analysed	Favoured	Allowed	Outliers	Percentiles	
1	A	429/441 (97%)	414 (96%)	15 (4%)	0	100	100
1	B	422/441 (96%)	409 (97%)	13 (3%)	0	100	100
All	All	851/882 (96%)	823 (97%)	28 (3%)	0	100	100

There are no Ramachandran outliers to report.

### 5.3.2 Protein sidechains [i](#)

In the following table, the Percentiles column shows the percent sidechain outliers of the chain as a percentile score with respect to all X-ray entries followed by that with respect to entries of similar resolution.

The Analysed column shows the number of residues for which the sidechain conformation was analysed, and the total number of residues.

Mol	Chain	Analysed	Rotameric	Outliers	Percentiles	
1	A	356/359 (99%)	351 (99%)	5 (1%)	59	75
1	B	353/359 (98%)	347 (98%)	6 (2%)	53	69
All	All	709/718 (99%)	698 (98%)	11 (2%)	59	71

5 of 11 residues with a non-rotameric sidechain are listed below:

Mol	Chain	Res	Type
1	B	60	LYS
1	B	200	LEU
1	B	357	GLU
1	B	295	ILE
1	A	384	ILE

Sometimes sidechains can be flipped to improve hydrogen bonding and reduce clashes. All (5) such sidechains are listed below:

Mol	Chain	Res	Type
1	A	68	ASN
1	A	244	HIS
1	A	260	GLN
1	B	47	GLN
1	B	244	HIS

### 5.3.3 RNA [i](#)

There are no RNA molecules in this entry.

## 5.4 Non-standard residues in protein, DNA, RNA chains [i](#)

There are no non-standard protein/DNA/RNA residues in this entry.

## 5.5 Carbohydrates [i](#)

There are no oligosaccharides in this entry.

## 5.6 Ligand geometry [i](#)

14 ligands are modelled in this entry.

In the following table, the Counts columns list the number of bonds (or angles) for which Mogul statistics could be retrieved, the number of bonds (or angles) that are observed in the model and the number of bonds (or angles) that are defined in the Chemical Component Dictionary. The Link column lists molecule types, if any, to which the group is linked. The Z score for a bond length (or angle) is the number of standard deviations the observed value is removed from the expected value. A bond length (or angle) with  $|Z| > 2$  is considered an outlier worth inspection. RMSZ is the root-mean-square of all Z scores of the bond lengths (or angles).

Mol	Type	Chain	Res	Link	Bond lengths			Bond angles		
					Counts	RMSZ	# Z  > 2	Counts	RMSZ	# Z  > 2
5	PEG	A	506	-	6,6,6	0.60	0	5,5,5	0.66	0
3	BGC	B	502	-	12,12,12	1.20	0	17,17,17	1.63	4 (23%)
6	PLP	A	507[B]	-	16,16,16	2.59	3 (18%)	20,23,23	1.58	3 (15%)
7	BTB	B	504	-	10,10,13	2.46	4 (40%)	12,12,16	7.59	8 (66%)
5	PEG	A	505	-	6,6,6	0.53	0	5,5,5	0.69	0
5	PEG	B	505[A]	-	6,6,6	0.26	0	5,5,5	0.58	0
3	BGC	B	503	-	10,10,12	0.72	0	14,14,17	1.03	1 (7%)
2	GLC	A	501	-	12,12,12	0.55	0	17,17,17	1.97	4 (23%)
5	PEG	A	504[A]	-	6,6,6	0.44	0	5,5,5	0.31	0
8	BME	B	507	1	3,3,3	0.51	0	2,2,2	0.11	0
3	BGC	B	501	-	12,12,12	0.54	0	17,17,17	1.87	6 (35%)
3	BGC	A	502	-	11,11,12	0.73	0	15,15,17	2.93	7 (46%)
6	PLP	B	506[B]	-	16,16,16	2.50	3 (18%)	20,23,23	1.76	4 (20%)
4	TRS	A	503	-	7,7,7	0.51	0	9,9,9	0.56	0

In the following table, the Chirals column lists the number of chiral outliers, the number of chiral

centers analysed, the number of these observed in the model and the number defined in the Chemical Component Dictionary. Similar counts are reported in the Torsion and Rings columns. '-' means no outliers of that kind were identified.

Mol	Type	Chain	Res	Link	Chirals	Torsions	Rings
5	PEG	A	506	-	-	3/4/4/4	-
3	BGC	B	502	-	-	0/2/22/22	0/1/1/1
6	PLP	A	507[B]	-	-	4/8/8/8	0/1/1/1
7	BTB	B	504	-	-	8/14/14/21	-
5	PEG	A	505	-	-	1/4/4/4	-
5	PEG	B	505[A]	-	-	3/4/4/4	-
3	BGC	B	503	-	-	-	0/1/1/1
2	GLC	A	501	-	-	1/2/22/22	0/1/1/1
5	PEG	A	504[A]	-	-	3/4/4/4	-
8	BME	B	507	1	-	0/1/1/1	-
3	BGC	B	501	-	-	1/2/22/22	0/1/1/1
3	BGC	A	502	-	-	2/2/19/22	0/1/1/1
6	PLP	B	506[B]	-	-	4/8/8/8	0/1/1/1
4	TRS	A	503	-	-	4/9/9/9	-

The worst 5 of 10 bond length outliers are listed below:

Mol	Chain	Res	Type	Atoms	Z	Observed(Å)	Ideal(Å)
6	B	506[B]	PLP	C3-C2	7.65	1.48	1.41
6	A	507[B]	PLP	C3-C2	7.63	1.48	1.41
6	A	507[B]	PLP	C4-C5	4.84	1.48	1.42
7	B	504	BTB	C3-C2	4.58	1.58	1.53
6	A	507[B]	PLP	C4-C3	4.46	1.48	1.41

The worst 5 of 37 bond angle outliers are listed below:

Mol	Chain	Res	Type	Atoms	Z	Observed(°)	Ideal(°)
7	B	504	BTB	C4-C2-N	14.12	151.17	109.02
7	B	504	BTB	C3-C2-N	-12.32	72.24	109.02
7	B	504	BTB	C4-C2-C3	-10.96	85.99	110.02
7	B	504	BTB	C3-C2-C1	9.37	130.56	110.02
7	B	504	BTB	C1-C2-N	-7.90	85.45	109.02

There are no chirality outliers.

5 of 34 torsion outliers are listed below:

Mol	Chain	Res	Type	Atoms
6	A	507[B]	PLP	C3-C4-C4A-O4A
7	B	504	BTB	O1-C1-C2-C4
7	B	504	BTB	O1-C1-C2-N
7	B	504	BTB	N-C2-C3-O3
7	B	504	BTB	C1-C2-N-C5

There are no ring outliers.

6 monomers are involved in 14 short contacts:

Mol	Chain	Res	Type	Clashes	Symm-Clashes
6	A	507[B]	PLP	6	0
5	A	505	PEG	1	0
5	B	505[A]	PEG	1	0
5	A	504[A]	PEG	4	0
3	B	501	BGC	1	0
3	A	502	BGC	1	0

## 5.7 Other polymers [i](#)

There are no such residues in this entry.

## 5.8 Polymer linkage issues [i](#)

There are no chain breaks in this entry.

## 6 Fit of model and data [i](#)

### 6.1 Protein, DNA and RNA chains [i](#)

In the following table, the column labelled '#RSRZ > 2' contains the number (and percentage) of RSRZ outliers, followed by percent RSRZ outliers for the chain as percentile scores relative to all X-ray entries and entries of similar resolution. The OWAB column contains the minimum, median, 95<sup>th</sup> percentile and maximum values of the occupancy-weighted average B-factor per residue. The column labelled 'Q < 0.9' lists the number of (and percentage) of residues with an average occupancy less than 0.9.

Mol	Chain	Analysed	<RSRZ>	#RSRZ>2	OWAB(Å <sup>2</sup> )	Q<0.9
1	A	426/441 (96%)	-0.58	1 (0%) 91 90	13, 31, 52, 81	5 (1%)
1	B	422/441 (95%)	-0.44	2 (0%) 87 85	18, 36, 61, 93	4 (0%)
All	All	848/882 (96%)	-0.51	3 (0%) 88 87	13, 34, 58, 93	9 (1%)

All (3) RSRZ outliers are listed below:

Mol	Chain	Res	Type	RSRZ
1	A	16	GLY	5.9
1	B	18	ARG	3.3
1	B	53	PRO	2.6

### 6.2 Non-standard residues in protein, DNA, RNA chains [i](#)

There are no non-standard protein/DNA/RNA residues in this entry.

### 6.3 Carbohydrates [i](#)

There are no oligosaccharides in this entry.

### 6.4 Ligands [i](#)

In the following table, the Atoms column lists the number of modelled atoms in the group and the number defined in the chemical component dictionary. The B-factors column lists the minimum, median, 95<sup>th</sup> percentile and maximum values of B factors of atoms in the group. The column labelled 'Q < 0.9' lists the number of atoms with occupancy less than 0.9.

Mol	Type	Chain	Res	Atoms	RSCC	RSR	B-factors(Å <sup>2</sup> )	Q<0.9
5	PEG	A	504[A]	7/7	0.63	0.31	38,40,46,47	7
5	PEG	B	505[A]	7/7	0.69	0.22	24,27,35,36	7

*Continued on next page...*

*Continued from previous page...*

Mol	Type	Chain	Res	Atoms	RSCC	RSR	B-factors( $\text{\AA}^2$ )	Q<0.9
3	BGC	B	502	12/12	0.75	0.17	44,62,76,81	0
8	BME	B	507	4/4	0.76	0.24	82,86,87,87	0
5	PEG	A	506	7/7	0.77	0.23	71,74,77,77	0
7	BTB	B	504	11/14	0.78	0.19	57,65,75,75	0
4	TRS	A	503	8/8	0.79	0.18	64,70,75,77	0
6	PLP	B	506[B]	16/16	0.80	0.26	37,41,52,53	16
5	PEG	A	505	7/7	0.80	0.21	50,58,75,77	0
6	PLP	A	507[B]	16/16	0.80	0.25	30,38,45,46	16
3	BGC	B	503	10/12	0.81	0.16	57,71,74,75	0
3	BGC	A	502	11/12	0.81	0.17	40,66,73,79	0
2	GLC	A	501	12/12	0.86	0.16	69,81,84,85	0
3	BGC	B	501	12/12	0.89	0.11	45,56,59,60	0

## 6.5 Other polymers [i](#)

There are no such residues in this entry.