



# wwPDB X-ray Structure Validation Summary Report ⓘ

Mar 5, 2026 – 10:56 AM UTC

PDB ID : 5EQS / pdb\_00005eqs  
Title : Crystal structure of a genotype 1a/3a chimeric HCV NS3/4A protease in complex with Asunaprevir  
Authors : Soumana, D.; Yilmaz, N.K.; Ali, A.; Prachanronarong, K.L.; Schiffer, C.A.  
Deposited on : 2015-11-13  
Resolution : 1.84 Å (reported)

This is a wwPDB X-ray Structure Validation Summary Report for a publicly released PDB entry.

We welcome your comments at [validation@mail.wwpdb.org](mailto:validation@mail.wwpdb.org)

A user guide is available at

<https://www.wwpdb.org/validation/2017/XrayValidationReportHelp>

with specific help available everywhere you see the ⓘ symbol.

The types of validation reports are described at

<http://www.wwpdb.org/validation/2017/FAQs#types>.

---

The following versions of software and data (see [references ⓘ](#)) were used in the production of this report:

MolProbity : 4-5-2 with Phenix2.0  
Mogul : 2022.3.0, CSD as543be (2022)  
Xtrriage (Phenix) : 2.0  
EDS : 3.0  
Buster-report : wwPDB partial adaption of 1.1.7 (2018)  
Percentile statistics : 20250101.v01 (using entries in the PDB archive January 1st 2025)  
CCP4 : 9.0.010 (Gargrove)  
Density-Fitness : 1.0.12  
Ideal geometry (proteins) : Engh & Huber (2001)  
Ideal geometry (DNA, RNA) : Parkinson et al. (1996)  
Validation Pipeline (wwPDB-VP) : 2.49

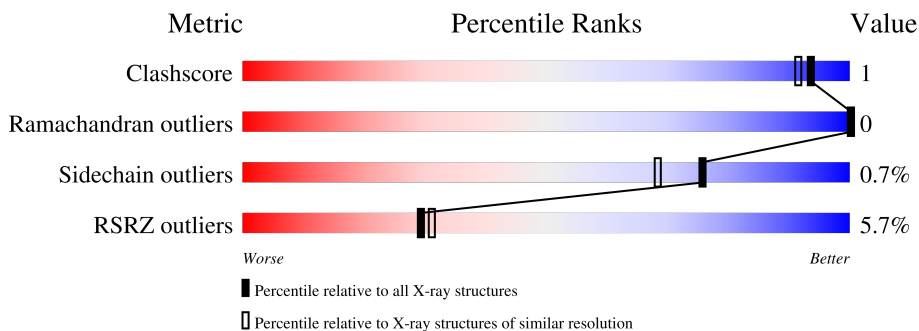
# 1 Overall quality at a glance

The following experimental techniques were used to determine the structure:

*X-RAY DIFFRACTION*

The reported resolution of this entry is 1.84 Å.

Percentile scores (ranging between 0-100) for global validation metrics of the entry are shown in the following graphic. The table shows the number of entries on which the scores are based.



Metric	Whole archive (#Entries)	Similar resolution (#Entries, resolution range(Å))
Clashscore	190562	1329 (1.84-1.84)
Ramachandran outliers	187476	1318 (1.84-1.84)
Sidechain outliers	187428	1318 (1.84-1.84)
RSRZ outliers	180081	1296 (1.84-1.84)

The table below summarises the geometric issues observed across the polymeric chains and their fit to the electron density. The red, orange, yellow and green segments of the lower bar indicate the fraction of residues that contain outliers for  $\geq 3$ , 2, 1 and 0 types of geometric quality criteria respectively. A grey segment represents the fraction of residues that are not modelled. The numeric value for each fraction is indicated below the corresponding segment, with a dot representing fractions  $\leq 5\%$ . The upper red bar (where present) indicates the fraction of residues that have poor fit to the electron density. The numeric value is given above the bar.

Mol	Chain	Length	Quality of chain
1	A	192	

## 2 Entry composition [i](#)

There are 4 unique types of molecules in this entry. The entry contains 2768 atoms, of which 1312 are hydrogens and 0 are deuteriums.

In the tables below, the ZeroOcc column contains the number of atoms modelled with zero occupancy, the AltConf column contains the number of residues with at least one atom in alternate conformation and the Trace column contains the number of residues modelled with at most 2 atoms.

- Molecule 1 is a protein called NS3 protease.

Mol	Chain	Residues	Atoms					ZeroOcc	AltConf	Trace	
			Total	C	H	N	O				S
1	A	192	2637	851	1266	244	269	7	0	0	0

There are 29 discrepancies between the modelled and reference sequences:

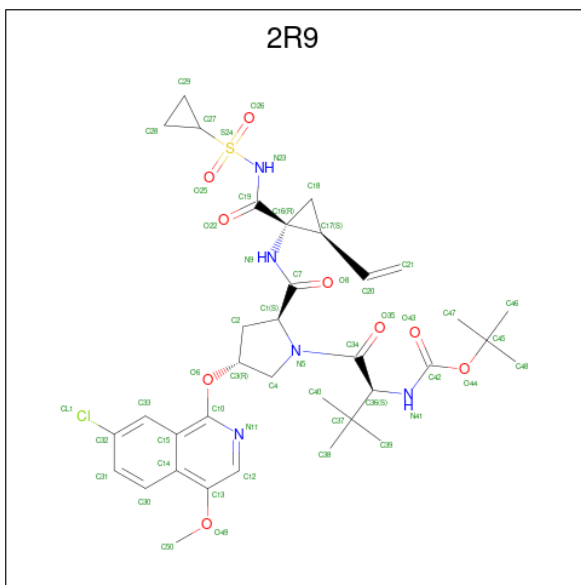
Chain	Residue	Modelled	Actual	Comment	Reference
A	988	LYS	-	expression tag	UNP C1KIK8
A	989	LYS	-	expression tag	UNP C1KIK8
A	990	GLY	-	expression tag	UNP C1KIK8
A	991	SER	-	expression tag	UNP C1KIK8
A	992	VAL	-	expression tag	UNP C1KIK8
A	993	VAL	-	expression tag	UNP C1KIK8
A	994	ILE	-	expression tag	UNP C1KIK8
A	995	VAL	-	expression tag	UNP C1KIK8
A	996	GLY	-	expression tag	UNP C1KIK8
A	997	ARG	-	expression tag	UNP C1KIK8
A	998	ILE	-	expression tag	UNP C1KIK8
A	999	ASN	-	expression tag	UNP C1KIK8
A	1000	LEU	-	expression tag	UNP C1KIK8
A	1001	SER	-	expression tag	UNP C1KIK8
A	1002	GLY	-	expression tag	UNP C1KIK8
A	1003	ASP	-	expression tag	UNP C1KIK8
A	1013	GLU	LEU	conflict	UNP C1KIK8
A	1014	GLU	LEU	conflict	UNP C1KIK8
A	1017	GLN	ILE	conflict	UNP C1KIK8
A	1018	GLU	ILE	conflict	UNP C1KIK8
A	1021	GLN	LEU	conflict	UNP C1KIK8
A	1040	THR	ALA	conflict	UNP C1KIK8
A	1047	SER	CYS	conflict	UNP C1KIK8
A	1052	LEU	CYS	conflict	UNP C1KIK8
A	1072	THR	ILE	conflict	UNP C1KIK8
A	1086	GLN	PRO	conflict	UNP C1KIK8
A	1123	THR	ARG	engineered mutation	UNP C1KIK8

*Continued on next page...*

Continued from previous page...

Chain	Residue	Modelled	Actual	Comment	Reference
A	1132	LEU	ILE	engineered mutation	UNP C1KIK8
A	1168	GLN	ASP	engineered mutation	UNP C1KIK8

- Molecule 2 is N-(tert-butoxycarbonyl)-3-methyl-L-valyl-(4R)-4-[(7-chloro-4-methoxyisoquinolin-1-yl)oxy]-N-[(1R,2S)-1-[(cyclopropylsulfonyl)carbamoyl]-2-ethenylcyclopropyl]-L-prolinamide (CCD ID: 2R9) (formula: C<sub>35</sub>H<sub>46</sub>ClN<sub>5</sub>O<sub>9</sub>S).



Mol	Chain	Residues	Atoms						ZeroOcc	AltConf	
			Total	C	Cl	H	N	O			S
2	A	1	97	35	1	46	5	9	1	0	0

- Molecule 3 is ZINC ION (CCD ID: ZN) (formula: Zn).

Mol	Chain	Residues	Atoms		ZeroOcc	AltConf
3	A	1	Total	Zn	0	0
			1	1		

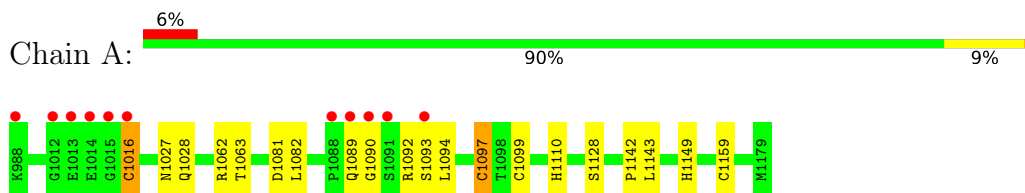
- Molecule 4 is water.

Mol	Chain	Residues	Atoms		ZeroOcc	AltConf
4	A	33	Total	O	0	0
			33	33		

### 3 Residue-property plots [i](#)

These plots are drawn for all protein, RNA, DNA and oligosaccharide chains in the entry. The first graphic for a chain summarises the proportions of the various outlier classes displayed in the second graphic. The second graphic shows the sequence view annotated by issues in geometry and electron density. Residues are color-coded according to the number of geometric quality criteria for which they contain at least one outlier: green = 0, yellow = 1, orange = 2 and red = 3 or more. A red dot above a residue indicates a poor fit to the electron density ( $RSRZ > 2$ ). Stretches of 2 or more consecutive residues without any outlier are shown as a green connector. Residues present in the sample, but not in the model, are shown in grey.

- Molecule 1: NS3 protease



## 4 Data and refinement statistics

Property	Value	Source
Space group	P 21 21 21	Depositor
Cell constants a, b, c, $\alpha$ , $\beta$ , $\gamma$	39.12Å 60.33Å 79.65Å 90.00° 90.00° 90.00°	Depositor
Resolution (Å)	25.33 – 1.84 25.33 – 1.84	Depositor EDS
% Data completeness (in resolution range)	90.3 (25.33-1.84) 79.9 (25.33-1.84)	Depositor EDS
$R_{merge}$	(Not available)	Depositor
$R_{sym}$	0.09	Depositor
$\langle I/\sigma(I) \rangle$ <sup>1</sup>	1.25 (at 1.84Å)	Xtrriage
Refinement program	PHENIX	Depositor
R, $R_{free}$	0.193 , 0.245 0.198 , (Not available)	Depositor DCC
$R_{free}$ test set	No test flags present.	wwPDB-VP
Wilson B-factor (Å <sup>2</sup> )	13.4	Xtrriage
Anisotropy	0.336	Xtrriage
Bulk solvent $k_{sol}$ (e/Å <sup>3</sup> ), $B_{sol}$ (Å <sup>2</sup> )	0.44 , 32.0	EDS
L-test for twinning <sup>2</sup>	$\langle  L  \rangle = 0.48$ , $\langle L^2 \rangle = 0.31$	Xtrriage
Estimated twinning fraction	No twinning to report.	Xtrriage
$F_o, F_c$ correlation	0.92	EDS
Total number of atoms	2768	wwPDB-VP
Average B, all atoms (Å <sup>2</sup> )	17.0	wwPDB-VP

Xtrriage's analysis on translational NCS is as follows: *The largest off-origin peak in the Patterson function is 7.94% of the height of the origin peak. No significant pseudotranslation is detected.*

<sup>1</sup>Intensities estimated from amplitudes.

<sup>2</sup>Theoretical values of  $\langle |L| \rangle$ ,  $\langle L^2 \rangle$  for acentric reflections are 0.5, 0.333 respectively for untwinned datasets, and 0.375, 0.2 for perfectly twinned datasets.

## 5 Model quality [i](#)

### 5.1 Standard geometry [i](#)

Bond lengths and bond angles in the following residue types are not validated in this section: 2R9, ZN

The Z score for a bond length (or angle) is the number of standard deviations the observed value is removed from the expected value. A bond length (or angle) with  $|Z| > 5$  is considered an outlier worth inspection. RMSZ is the root-mean-square of all Z scores of the bond lengths (or angles).

Mol	Chain	Bond lengths		Bond angles	
		RMSZ	# Z  >5	RMSZ	# Z  >5
1	A	1.09	10/1395 (0.7%)	1.03	7/1906 (0.4%)

The worst 5 of 10 bond length outliers are listed below:

Mol	Chain	Res	Type	Atoms	Z	Observed(Å)	Ideal(Å)
1	A	1062	ARG	C-O	-7.57	1.14	1.23
1	A	1027	ASN	C-O	-7.33	1.15	1.23
1	A	1028	GLN	C-O	-6.79	1.15	1.23
1	A	1110	HIS	C-O	-6.67	1.15	1.24
1	A	1094	LEU	C-O	-6.44	1.15	1.23

The worst 5 of 7 bond angle outliers are listed below:

Mol	Chain	Res	Type	Atoms	Z	Observed(°)	Ideal(°)
1	A	1016	CYS	N-CA-C	8.86	121.74	111.11
1	A	1092	ARG	N-CA-C	-7.96	96.70	109.76
1	A	1159	CYS	N-CA-C	6.97	120.32	109.52
1	A	1027	ASN	N-CA-C	6.41	119.58	109.96
1	A	1082	LEU	N-CA-C	5.78	118.32	108.90

There are no chirality outliers.

There are no planarity outliers.

### 5.2 Too-close contacts [i](#)

In the following table, the Non-H and H(model) columns list the number of non-hydrogen atoms and hydrogen atoms in the chain respectively. The H(added) column lists the number of hydrogen atoms added and optimized by MolProbity. The Clashes column lists the number of clashes within the asymmetric unit, whereas Symm-Clashes lists symmetry-related clashes.

Mol	Chain	Non-H	H(model)	H(added)	Clashes	Symm-Clashes
1	A	1371	1266	1335	4	0
2	A	51	46	45	1	0
3	A	1	0	0	0	0
4	A	33	0	0	0	0
All	All	1456	1312	1380	4	0

The all-atom clashscore is defined as the number of clashes found per 1000 atoms (including hydrogen atoms). The all-atom clashscore for this structure is 1.

All (4) close contacts within the same asymmetric unit are listed below, sorted by their clash magnitude.

Atom-1	Atom-2	Interatomic distance (Å)	Clash overlap (Å)
1:A:1097:CYS:HB2	1:A:1149:HIS:HB2	1.99	0.44
1:A:1081:ASP:HB2	2:A:1201:2R9:C30	2.48	0.43
1:A:1097:CYS:SG	1:A:1099:CYS:HB2	2.59	0.42
1:A:1089:GLN:HA	1:A:1090:GLY:HA2	1.91	0.41

There are no symmetry-related clashes.

## 5.3 Torsion angles [i](#)

### 5.3.1 Protein backbone [i](#)

In the following table, the Percentiles column shows the percent Ramachandran outliers of the chain as a percentile score with respect to all X-ray entries followed by that with respect to entries of similar resolution.

The Analysed column shows the number of residues for which the backbone conformation was analysed, and the total number of residues.

Mol	Chain	Analysed	Favoured	Allowed	Outliers	Percentiles
1	A	190/192 (99%)	187 (98%)	3 (2%)	0	<b>100</b> <b>100</b>

There are no Ramachandran outliers to report.

### 5.3.2 Protein sidechains [i](#)

In the following table, the Percentiles column shows the percent sidechain outliers of the chain as a percentile score with respect to all X-ray entries followed by that with respect to entries of similar resolution.

The Analysed column shows the number of residues for which the sidechain conformation was analysed, and the total number of residues.

Mol	Chain	Analysed	Rotameric	Outliers	Percentiles
1	A	145/156 (93%)	144 (99%)	1 (1%)	76 68

All (1) residues with a non-rotameric sidechain are listed below:

Mol	Chain	Res	Type
1	A	1016	CYS

Sometimes sidechains can be flipped to improve hydrogen bonding and reduce clashes. All (4) such sidechains are listed below:

Mol	Chain	Res	Type
1	A	1009	GLN
1	A	1034	GLN
1	A	1041	GLN
1	A	1110	HIS

### 5.3.3 RNA [i](#)

There are no RNA molecules in this entry.

### 5.4 Non-standard residues in protein, DNA, RNA chains [i](#)

There are no non-standard protein/DNA/RNA residues in this entry.

### 5.5 Carbohydrates [i](#)

There are no oligosaccharides in this entry.

### 5.6 Ligand geometry [i](#)

Of 2 ligands modelled in this entry, 1 is monoatomic - leaving 1 for Mogul analysis.

In the following table, the Counts columns list the number of bonds (or angles) for which Mogul statistics could be retrieved, the number of bonds (or angles) that are observed in the model and the number of bonds (or angles) that are defined in the Chemical Component Dictionary. The Link column lists molecule types, if any, to which the group is linked. The Z score for a bond length (or angle) is the number of standard deviations the observed value is removed from the

expected value. A bond length (or angle) with  $|Z| > 2$  is considered an outlier worth inspection. RMSZ is the root-mean-square of all Z scores of the bond lengths (or angles).

Mol	Type	Chain	Res	Link	Bond lengths			Bond angles		
					Counts	RMSZ	# $ Z  > 2$	Counts	RMSZ	# $ Z  > 2$
2	2R9	A	1201	-	51,55,55	3.33	16 (31%)	73,86,86	2.10	15 (20%)

In the following table, the Chirals column lists the number of chiral outliers, the number of chiral centers analysed, the number of these observed in the model and the number defined in the Chemical Component Dictionary. Similar counts are reported in the Torsion and Rings columns. '-' means no outliers of that kind were identified.

Mol	Type	Chain	Res	Link	Chirals	Torsions	Rings
2	2R9	A	1201	-	-	1/55/79/79	0/5/5/5

The worst 5 of 16 bond length outliers are listed below:

Mol	Chain	Res	Type	Atoms	Z	Observed(Å)	Ideal(Å)
2	A	1201	2R9	C18-C16	-14.07	1.36	1.51
2	A	1201	2R9	C16-C17	-11.05	1.34	1.54
2	A	1201	2R9	O25-S24	7.00	1.51	1.43
2	A	1201	2R9	O26-S24	6.92	1.51	1.43
2	A	1201	2R9	C16-N9	4.54	1.53	1.45

The worst 5 of 15 bond angle outliers are listed below:

Mol	Chain	Res	Type	Atoms	Z	Observed(°)	Ideal(°)
2	A	1201	2R9	C2-C3-C4	-8.78	96.36	103.69
2	A	1201	2R9	C18-C16-N9	-6.85	108.73	117.77
2	A	1201	2R9	O26-S24-O25	-5.93	110.22	118.88
2	A	1201	2R9	O44-C42-N41	4.89	118.03	110.03
2	A	1201	2R9	C17-C16-N9	-3.76	110.23	117.25

There are no chirality outliers.

All (1) torsion outliers are listed below:

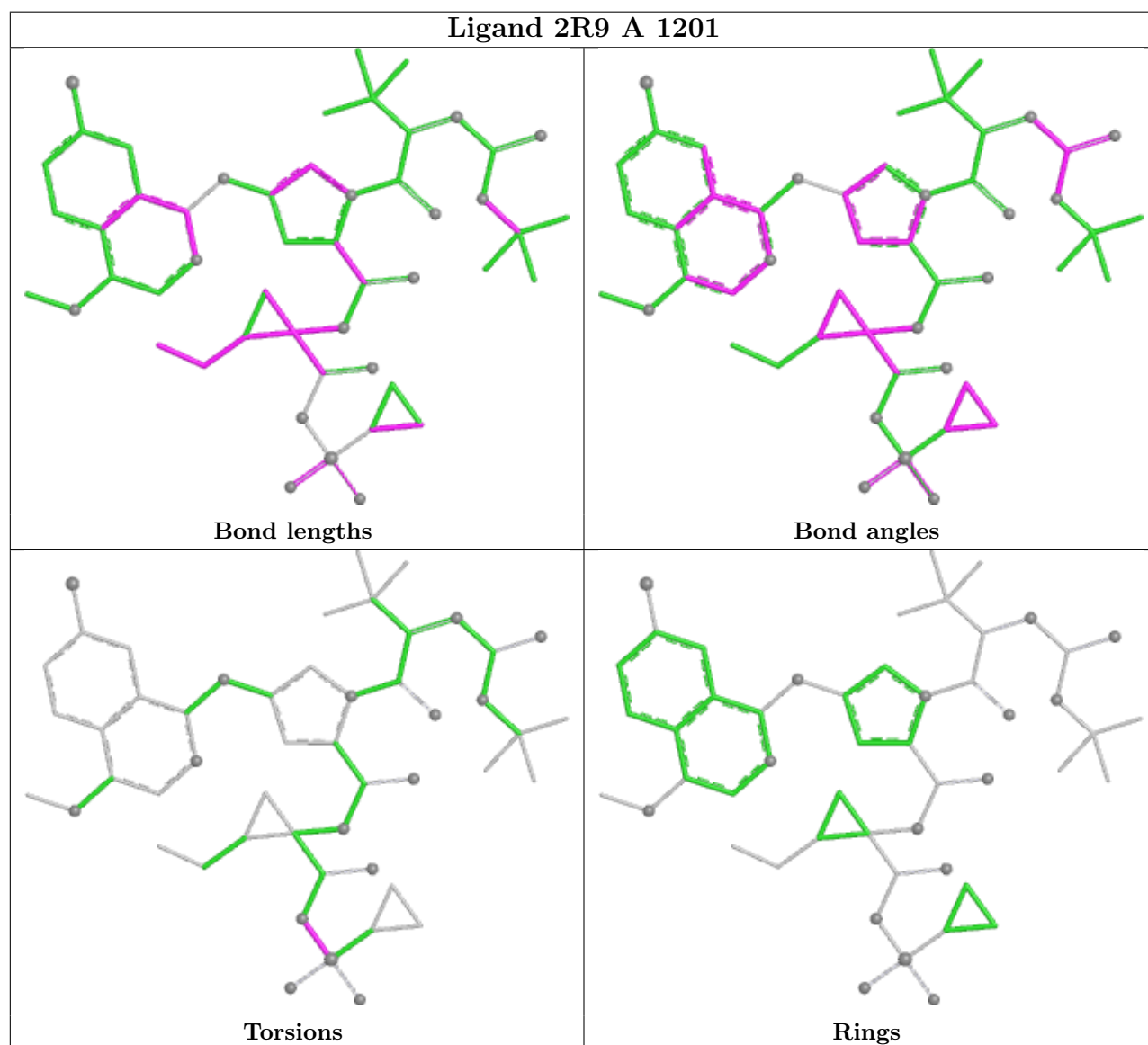
Mol	Chain	Res	Type	Atoms
2	A	1201	2R9	C19-N23-S24-C27

There are no ring outliers.

1 monomer is involved in 1 short contact:

Mol	Chain	Res	Type	Clashes	Symm-Clashes
2	A	1201	2R9	1	0

The following is a two-dimensional graphical depiction of Mogul quality analysis of bond lengths, bond angles, torsion angles, and ring geometry for all instances of the Ligand of Interest. In addition, ligands with molecular weight > 250 and outliers as shown on the validation Tables will also be included. For torsion angles, if less than 5% of the Mogul distribution of torsion angles is within 10 degrees of the torsion angle in question, then that torsion angle is considered an outlier. Any bond that is central to one or more torsion angles identified as an outlier by Mogul will be highlighted in the graph. For rings, the root-mean-square deviation (RMSD) between the ring in question and similar rings identified by Mogul is calculated over all ring torsion angles. If the average RMSD is greater than 60 degrees and the minimal RMSD between the ring in question and any Mogul-identified rings is also greater than 60 degrees, then that ring is considered an outlier. The outliers are highlighted in purple. The color gray indicates Mogul did not find sufficient equivalents in the CSD to analyse the geometry.



## 5.7 Other polymers [i](#)

There are no such residues in this entry.

## 5.8 Polymer linkage issues [i](#)

There are no chain breaks in this entry.

## 6 Fit of model and data [i](#)

### 6.1 Protein, DNA and RNA chains [i](#)

In the following table, the column labelled ‘#RSRZ> 2’ contains the number (and percentage) of RSRZ outliers, followed by percent RSRZ outliers for the chain as percentile scores relative to all X-ray entries and entries of similar resolution. The OWAB column contains the minimum, median, 95<sup>th</sup> percentile and maximum values of the occupancy-weighted average B-factor per residue. The column labelled ‘Q< 0.9’ lists the number of (and percentage) of residues with an average occupancy less than 0.9.

Mol	Chain	Analysed	<RSRZ>	#RSRZ>2	OWAB(Å <sup>2</sup> )	Q<0.9
1	A	192/192 (100%)	0.15	11 (5%) 29 31	7, 16, 34, 54	0

The worst 5 of 11 RSRZ outliers are listed below:

Mol	Chain	Res	Type	RSRZ
1	A	1015	GLY	6.3
1	A	1089	GLN	5.8
1	A	1090	GLY	4.8
1	A	1093	SER	3.7
1	A	988	LYS	3.6

### 6.2 Non-standard residues in protein, DNA, RNA chains [i](#)

There are no non-standard protein/DNA/RNA residues in this entry.

### 6.3 Carbohydrates [i](#)

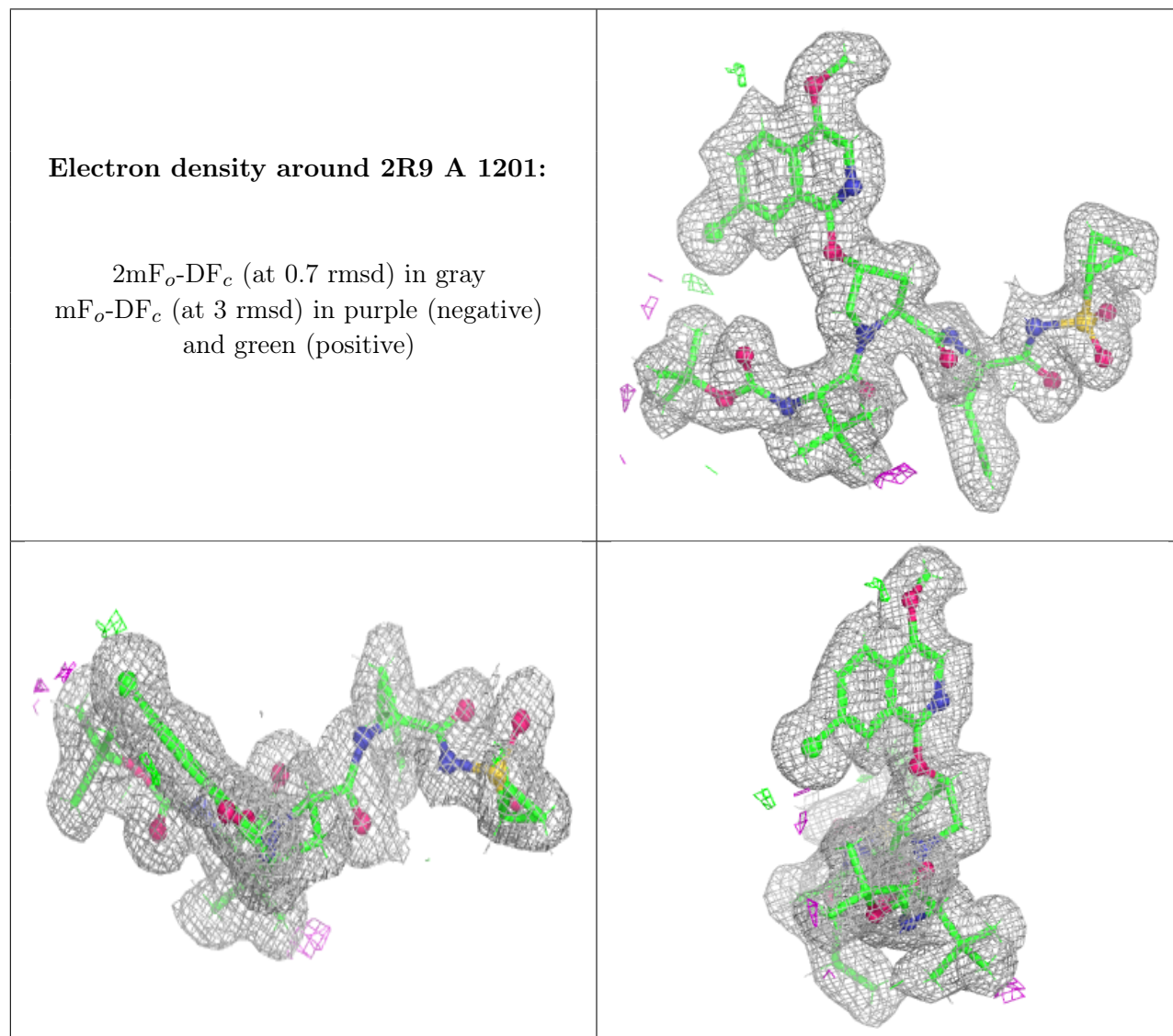
There are no oligosaccharides in this entry.

### 6.4 Ligands [i](#)

In the following table, the Atoms column lists the number of modelled atoms in the group and the number defined in the chemical component dictionary. The B-factors column lists the minimum, median, 95<sup>th</sup> percentile and maximum values of B factors of atoms in the group. The column labelled ‘Q< 0.9’ lists the number of atoms with occupancy less than 0.9.

Mol	Type	Chain	Res	Atoms	RSCC	RSR	B-factors(Å <sup>2</sup> )	Q<0.9
2	2R9	A	1201	51/51	0.96	0.06	6,11,16,17	0
3	ZN	A	1202	1/1	0.98	0.03	17,17,17,17	0

The following is a graphical depiction of the model fit to experimental electron density of all instances of the Ligand of Interest. In addition, ligands with molecular weight > 250 and outliers as shown on the geometry validation Tables will also be included. Each fit is shown from different orientation to approximate a three-dimensional view.



## 6.5 Other polymers [i](#)

There are no such residues in this entry.