



wwPDB X-ray Structure Validation Summary Report ⓘ

Mar 8, 2026 – 06:50 AM UTC

PDB ID : 6EQS / pdb_00006eqs
Title : Human Sirt5 in complex with stalled peptidylimide intermediate of inhibitory compound 29
Authors : Pannek, M.; Steegborn, C.
Deposited on : 2017-10-15
Resolution : 1.32 Å (reported)

This is a wwPDB X-ray Structure Validation Summary Report for a publicly released PDB entry.

We welcome your comments at validation@mail.wwpdb.org

A user guide is available at

<https://www.wwpdb.org/validation/2017/XrayValidationReportHelp>

with specific help available everywhere you see the ⓘ symbol.

The types of validation reports are described at

<http://www.wwpdb.org/validation/2017/FAQs#types>.

The following versions of software and data (see [references ⓘ](#)) were used in the production of this report:

MolProbity : 4-5-2 with Phenix2.0
Mogul : 2022.3.0, CSD as543be (2022)
Xtrriage (Phenix) : 2.0
EDS : 3.0
Buster-report : wwPDB partial adaption of 1.1.7 (2018)
Percentile statistics : 20250101.v01 (using entries in the PDB archive January 1st 2025)
CCP4 : 9.0.010 (Gargrove)
Density-Fitness : 1.0.12
Ideal geometry (proteins) : Engh & Huber (2001)
Ideal geometry (DNA, RNA) : Parkinson et al. (1996)
Validation Pipeline (wwPDB-VP) : 2.49

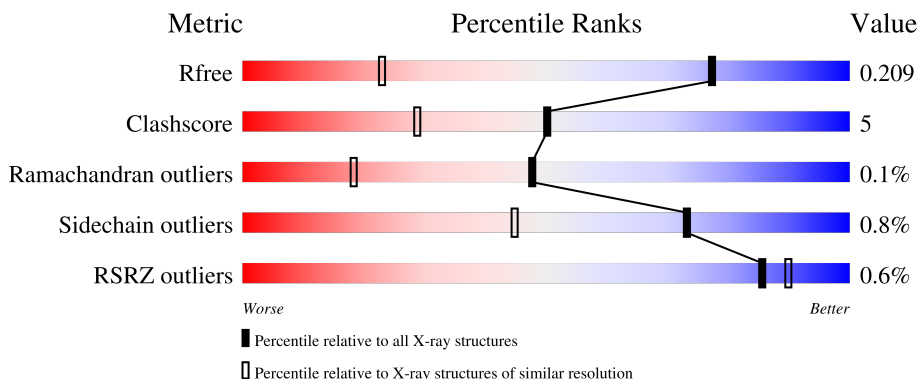
1 Overall quality at a glance

The following experimental techniques were used to determine the structure:

X-RAY DIFFRACTION

The reported resolution of this entry is 1.32 Å.

Percentile scores (ranging between 0-100) for global validation metrics of the entry are shown in the following graphic. The table shows the number of entries on which the scores are based.



Metric	Whole archive (#Entries)	Similar resolution (#Entries, resolution range(Å))
R_{free}	180053	2531 (1.34-1.30)
Clashscore	190562	2585 (1.34-1.30)
Ramachandran outliers	187476	2528 (1.34-1.30)
Sidechain outliers	187428	2528 (1.34-1.30)
RSRZ outliers	180081	2528 (1.34-1.30)

The table below summarises the geometric issues observed across the polymeric chains and their fit to the electron density. The red, orange, yellow and green segments of the lower bar indicate the fraction of residues that contain outliers for ≥ 3 , 2, 1 and 0 types of geometric quality criteria respectively. A grey segment represents the fraction of residues that are not modelled. The numeric value for each fraction is indicated below the corresponding segment, with a dot representing fractions $\leq 5\%$. The upper red bar (where present) indicates the fraction of residues that have poor fit to the electron density. The numeric value is given above the bar.

Mol	Chain	Length	Quality of chain
1	A	275	 76% 19% ..
1	B	275	 78% 17% ..
1	C	275	 84% 13% ..
1	D	275	 78% 20% .

The following table lists non-polymeric compounds, carbohydrate monomers and non-standard

residues in protein, DNA, RNA chains that are outliers for geometric or electron-density-fit criteria:

Mol	Type	Chain	Res	Chirality	Geometry	Clashes	Electron density
4	EDO	B	406	-	-	X	-
5	BU2	A	408	-	-	X	-
5	BU2	B	408[A]	-	-	X	-
5	BU2	B	410	-	-	X	-
5	BU2	D	405	-	-	X	-

2 Entry composition [i](#)

There are 7 unique types of molecules in this entry. The entry contains 10389 atoms, of which 0 are hydrogens and 0 are deuteriums.

In the tables below, the ZeroOcc column contains the number of atoms modelled with zero occupancy, the AltConf column contains the number of residues with at least one atom in alternate conformation and the Trace column contains the number of residues modelled with at most 2 atoms.

- Molecule 1 is a protein called NAD-dependent protein deacylase sirtuin-5, mitochondrial.

Mol	Chain	Residues	Atoms					ZeroOcc	AltConf	Trace
			Total	C	N	O	S			
1	A	269	2113	1334	387	377	15	0	9	0
1	B	268	2107	1333	384	376	14	0	10	0
1	C	274	2136	1351	388	384	13	0	6	0
1	D	275	2145	1356	389	387	13	0	7	0

There are 24 discrepancies between the modelled and reference sequences:

Chain	Residue	Modelled	Actual	Comment	Reference
A	28	GLY	-	expression tag	UNP Q9NXA8
A	29	ILE	-	expression tag	UNP Q9NXA8
A	30	ASP	-	expression tag	UNP Q9NXA8
A	31	PRO	-	expression tag	UNP Q9NXA8
A	32	PHE	-	expression tag	UNP Q9NXA8
A	33	THR	-	expression tag	UNP Q9NXA8
B	28	GLY	-	expression tag	UNP Q9NXA8
B	29	ILE	-	expression tag	UNP Q9NXA8
B	30	ASP	-	expression tag	UNP Q9NXA8
B	31	PRO	-	expression tag	UNP Q9NXA8
B	32	PHE	-	expression tag	UNP Q9NXA8
B	33	THR	-	expression tag	UNP Q9NXA8
C	28	GLY	-	expression tag	UNP Q9NXA8
C	29	ILE	-	expression tag	UNP Q9NXA8
C	30	ASP	-	expression tag	UNP Q9NXA8
C	31	PRO	-	expression tag	UNP Q9NXA8
C	32	PHE	-	expression tag	UNP Q9NXA8
C	33	THR	-	expression tag	UNP Q9NXA8
D	28	GLY	-	expression tag	UNP Q9NXA8
D	29	ILE	-	expression tag	UNP Q9NXA8
D	30	ASP	-	expression tag	UNP Q9NXA8

Continued on next page...

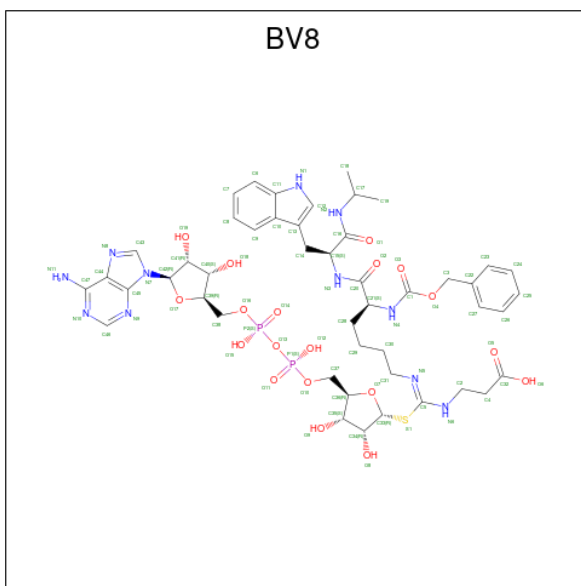
Continued from previous page...

Chain	Residue	Modelled	Actual	Comment	Reference
D	31	PRO	-	expression tag	UNP Q9NXA8
D	32	PHE	-	expression tag	UNP Q9NXA8
D	33	THR	-	expression tag	UNP Q9NXA8

- Molecule 2 is ZINC ION (CCD ID: ZN) (formula: Zn).

Mol	Chain	Residues	Atoms	ZeroOcc	AltConf
2	A	1	Total Zn 1 1	0	0
2	B	1	Total Zn 1 1	0	0
2	C	1	Total Zn 1 1	0	0
2	D	1	Total Zn 1 1	0	0

- Molecule 3 is 3-[[[({Z})- {C}]-[(2 {R},3 {R},4 {S},5 {R})-5-[[[(2 {R},3 {S},4 {R},5 {R})-5-(6-aminopurin-9-yl)-3,4-bis(oxidanyl)oxolan-2-yl]methoxy-oxidanyl-phosphoryl]oxy-oxidanyl-phosphoryl]oxymethyl]-3,4-bis(oxidanyl)oxolan-2-yl]sulfanyl- {N}]-[(5 {S})-6-[[[(2 {S})-3-(1 {H})-indol-3-yl)-1-oxidanylidene-1-(propan-2-ylamino)propan-2-yl]amino]-6-oxidanylidene-5-(phenylmethoxycarbonylamino)hexyl]carbonimidoyl]amino]propanoic acid (CCD ID: BV8) (formula: C₄₇H₆₃N₁₁O₁₉P₂S).



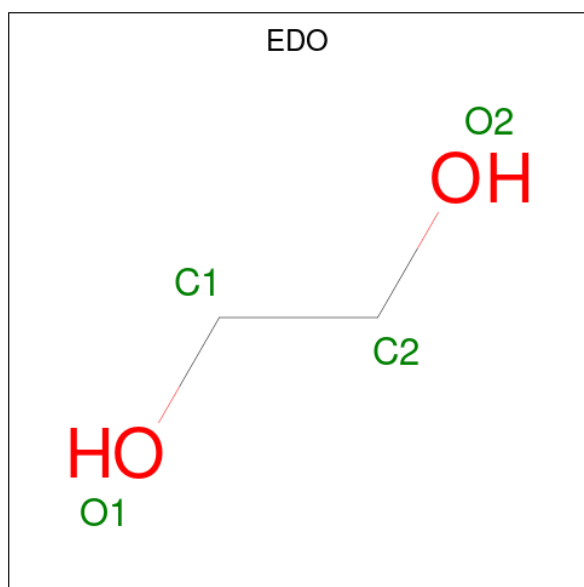
Mol	Chain	Residues	Atoms	ZeroOcc	AltConf
3	A	1	Total C N O P S 160 94 22 38 4 2	0	1

Continued on next page...

Continued from previous page...

Mol	Chain	Residues	Atoms					ZeroOcc	AltConf	
3	B	1	Total	C	N	O	P	S	0	1
			160	94	22	38	4	2		
3	C	1	Total	C	N	O	P	S	0	1
			160	94	22	38	4	2		
3	D	1	Total	C	N	O	P	S	0	1
			160	94	22	38	4	2		

- Molecule 4 is 1,2-ETHANEDIOL (CCD ID: EDO) (formula: C₂H₆O₂).



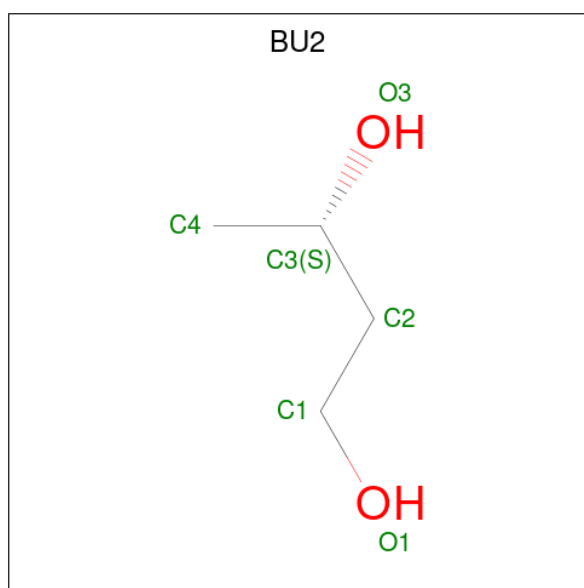
Mol	Chain	Residues	Atoms		ZeroOcc	AltConf
4	A	1	Total	C O	0	1
			8	4 4		
4	A	1	Total	C O	0	1
			8	4 4		
4	A	1	Total	C O	0	1
			8	4 4		
4	A	1	Total	C O	0	0
			4	2 2		
4	A	1	Total	C O	0	0
			4	2 2		
4	B	1	Total	C O	0	1
			8	4 4		
4	B	1	Total	C O	0	1
			8	4 4		
4	B	1	Total	C O	0	1
			8	4 4		

Continued on next page...

Continued from previous page...

Mol	Chain	Residues	Atoms	ZeroOcc	AltConf
4	B	1	Total C O 4 2 2	0	0
4	B	1	Total C O 4 2 2	0	0
4	C	1	Total C O 8 4 4	0	1
4	C	1	Total C O 4 2 2	0	0
4	C	1	Total C O 4 2 2	0	0
4	D	1	Total C O 8 4 4	0	1
4	D	1	Total C O 8 4 4	0	1

- Molecule 5 is 1,3-BUTANEDIOL (CCD ID: BU2) (formula: C₄H₁₀O₂).



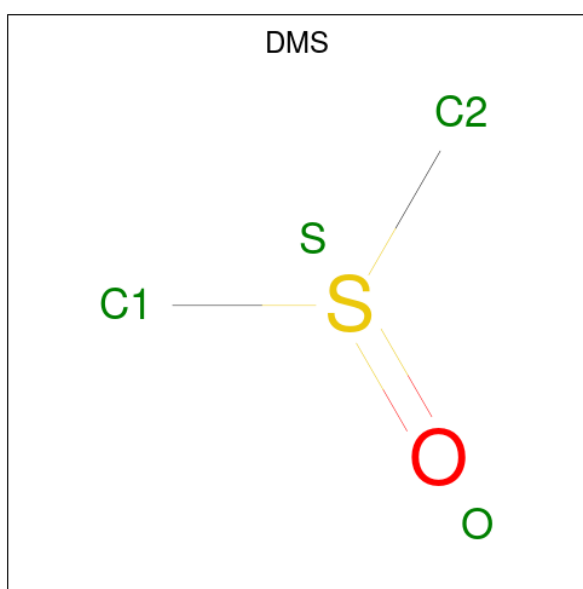
Mol	Chain	Residues	Atoms	ZeroOcc	AltConf
5	A	1	Total C O 6 4 2	0	0
5	A	1	Total C O 6 4 2	0	0
5	B	1	Total C O 12 8 4	0	1
5	B	1	Total C O 6 4 2	0	0

Continued on next page...

Continued from previous page...

Mol	Chain	Residues	Atoms			ZeroOcc	AltConf
5	B	1	Total	C	O	0	0
			6	4	2		
5	C	1	Total	C	O	0	0
			6	4	2		
5	D	1	Total	C	O	0	0
			6	4	2		
5	D	1	Total	C	O	0	0
			6	4	2		

- Molecule 6 is DIMETHYL SULFOXIDE (CCD ID: DMS) (formula: C₂H₆OS).



Mol	Chain	Residues	Atoms				ZeroOcc	AltConf
6	A	1	Total	C	O	S	0	0
			4	2	1	1		
6	A	1	Total	C	O	S	0	0
			4	2	1	1		

- Molecule 7 is water.

Mol	Chain	Residues	Atoms		ZeroOcc	AltConf
7	A	294	Total	O	0	0
			294	294		
7	B	288	Total	O	0	0
			288	288		
7	C	255	Total	O	0	0
			255	255		

Continued on next page...


Continued from previous page...

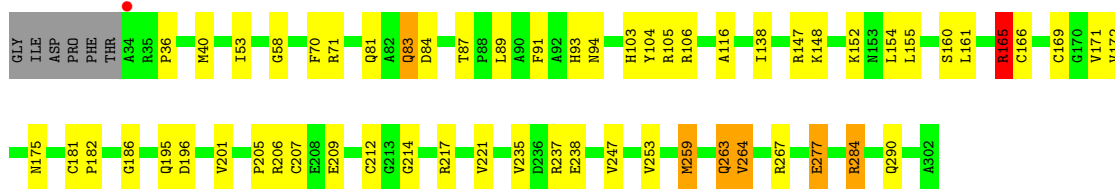
Mol	Chain	Residues	Atoms		ZeroOcc	AltConf
7	D	249	Total 249	O 249	0	0

3 Residue-property plots


These plots are drawn for all protein, RNA, DNA and oligosaccharide chains in the entry. The first graphic for a chain summarises the proportions of the various outlier classes displayed in the second graphic. The second graphic shows the sequence view annotated by issues in geometry and electron density. Residues are color-coded according to the number of geometric quality criteria for which they contain at least one outlier: green = 0, yellow = 1, orange = 2 and red = 3 or more. A red dot above a residue indicates a poor fit to the electron density ($RSRZ > 2$). Stretches of 2 or more consecutive residues without any outlier are shown as a green connector. Residues present in the sample, but not in the model, are shown in grey.

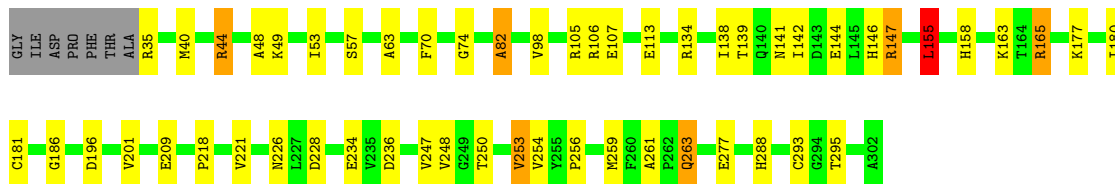
- Molecule 1: NAD-dependent protein deacylase sirtuin-5, mitochondrial

Chain A: 




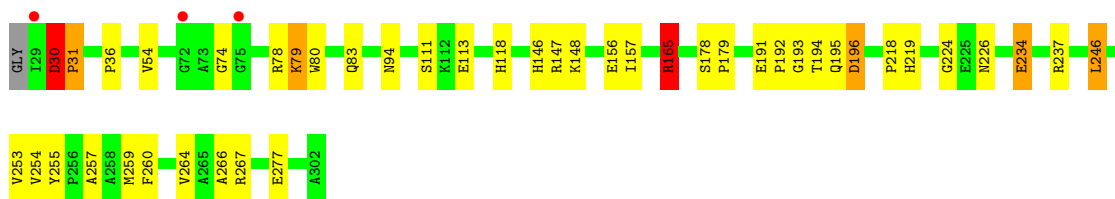
- Molecule 1: NAD-dependent protein deacylase sirtuin-5, mitochondrial

Chain B: 




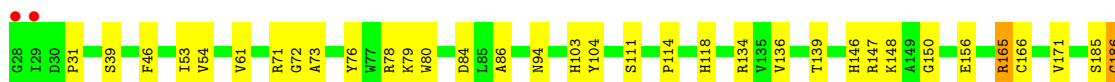
- Molecule 1: NAD-dependent protein deacylase sirtuin-5, mitochondrial

Chain C: 



- Molecule 1: NAD-dependent protein deacylase sirtuin-5, mitochondrial

Chain D: 



4 Data and refinement statistics

Property	Value	Source
Space group	P 1	Depositor
Cell constants a, b, c, α , β , γ	40.33Å 55.97Å 123.03Å 97.39° 99.29° 90.52°	Depositor
Resolution (Å)	43.77 – 1.32 43.77 – 1.32	Depositor EDS
% Data completeness (in resolution range)	91.9 (43.77-1.32) 91.8 (43.77-1.32)	Depositor EDS
R_{merge}	(Not available)	Depositor
R_{sym}	(Not available)	Depositor
$\langle I/\sigma(I) \rangle$ ¹	2.40 (at 1.32Å)	Xtrriage
Refinement program	REFMAC 5.8.0158	Depositor
R, R_{free}	0.160 , 0.209 (Not available) , 0.209	Depositor DCC
R_{free} test set	2388 reflections (0.94%)	wwPDB-VP
Wilson B-factor (Å ²)	15.2	Xtrriage
Anisotropy	0.317	Xtrriage
Bulk solvent k_{sol} (e/Å ³), B_{sol} (Å ²)	0.34 , 54.7	EDS
L-test for twinning ²	$\langle L \rangle = 0.45$, $\langle L^2 \rangle = 0.29$	Xtrriage
Estimated twinning fraction	0.000 for h,-k,-h-l	Xtrriage
F_o, F_c correlation	0.98	EDS
Total number of atoms	10389	wwPDB-VP
Average B, all atoms (Å ²)	22.0	wwPDB-VP

Xtrriage's analysis on translational NCS is as follows: *The analyses of the Patterson function reveals a significant off-origin peak that is 91.69 % of the origin peak, indicating pseudo-translational symmetry. The chance of finding a peak of this or larger height randomly in a structure without pseudo-translational symmetry is equal to 1.3245e-08. The detected translational NCS is most likely also responsible for the elevated intensity ratio.*

¹Intensities estimated from amplitudes.

²Theoretical values of $\langle |L| \rangle$, $\langle L^2 \rangle$ for acentric reflections are 0.5, 0.333 respectively for untwinned datasets, and 0.375, 0.2 for perfectly twinned datasets.

5 Model quality [i](#)

5.1 Standard geometry [i](#)

Bond lengths and bond angles in the following residue types are not validated in this section: EDO, BU2, BV8, DMS, ZN

The Z score for a bond length (or angle) is the number of standard deviations the observed value is removed from the expected value. A bond length (or angle) with $|Z| > 5$ is considered an outlier worth inspection. RMSZ is the root-mean-square of all Z scores of the bond lengths (or angles).

Mol	Chain	Bond lengths		Bond angles	
		RMSZ	# Z >5	RMSZ	# Z >5
1	A	1.89	37/2187 (1.7%)	1.62	16/2964 (0.5%)
1	B	1.83	26/2187 (1.2%)	1.58	21/2965 (0.7%)
1	C	1.88	33/2203 (1.5%)	1.57	19/2990 (0.6%)
1	D	1.91	39/2218 (1.8%)	1.54	22/3009 (0.7%)
All	All	1.88	135/8795 (1.5%)	1.58	78/11928 (0.7%)

Chiral center outliers are detected by calculating the chiral volume of a chiral center and verifying if the center is modelled as a planar moiety or with the opposite hand. A planarity outlier is detected by checking planarity of atoms in a peptide group, atoms in a mainchain group or atoms of a sidechain that are expected to be planar.

Mol	Chain	#Chirality outliers	#Planarity outliers
1	A	0	1
1	B	0	1
1	C	0	2
1	D	0	2
All	All	0	6

The worst 5 of 135 bond length outliers are listed below:

Mol	Chain	Res	Type	Atoms	Z	Observed(Å)	Ideal(Å)
1	D	234	GLU	CD-OE2	17.85	1.59	1.25
1	C	234	GLU	CD-OE2	10.58	1.45	1.25
1	B	155	LEU	CB-CG	-9.09	1.35	1.53
1	C	192	PRO	C-O	8.97	1.34	1.23
1	C	165	ARG	CZ-NH1	-8.42	1.21	1.32

The worst 5 of 78 bond angle outliers are listed below:

Mol	Chain	Res	Type	Atoms	Z	Observed(°)	Ideal(°)
1	C	191	GLU	CA-C-N	-12.45	108.11	120.31
1	C	191	GLU	C-N-CA	-12.45	108.11	120.31
1	D	191	GLU	CA-C-N	-11.88	108.76	120.52
1	D	191	GLU	C-N-CA	-11.88	108.76	120.52
1	A	147	ARG	CG-CD-NE	-7.83	94.78	112.00

There are no chirality outliers.

5 of 6 planarity outliers are listed below:

Mol	Chain	Res	Type	Group
1	A	165	ARG	Sidechain
1	B	165	ARG	Sidechain
1	C	165	ARG	Sidechain
1	C	234	GLU	Sidechain
1	D	165	ARG	Sidechain

5.2 Too-close contacts [i](#)

In the following table, the Non-H and H(model) columns list the number of non-hydrogen atoms and hydrogen atoms in the chain respectively. The H(added) column lists the number of hydrogen atoms added and optimized by MolProbity. The Clashes column lists the number of clashes within the asymmetric unit, whereas Symm-Clashes lists symmetry-related clashes.

Mol	Chain	Non-H	H(model)	H(added)	Clashes	Symm-Clashes
1	A	2113	0	2106	21	0
1	B	2107	0	2110	27	1
1	C	2136	0	2118	12	0
1	D	2145	0	2127	19	1
2	A	1	0	0	0	0
2	B	1	0	0	0	0
2	C	1	0	0	0	0
2	D	1	0	0	0	0
3	A	160	0	0	0	0
3	B	160	0	0	9	0
3	C	160	0	0	3	0
3	D	160	0	0	2	0
4	A	32	0	47	6	0
4	B	32	0	45	4	0
4	C	16	0	23	1	0
4	D	16	0	24	0	0
5	A	12	0	19	9	0
5	B	24	0	40	13	0

Continued on next page...

Continued from previous page...

Mol	Chain	Non-H	H(model)	H(added)	Clashes	Symm-Clashes
5	C	6	0	9	0	0
5	D	12	0	20	4	0
6	A	8	0	12	0	0
7	A	294	0	0	9	2
7	B	288	0	0	10	2
7	C	255	0	0	3	1
7	D	249	0	0	7	2
All	All	10389	0	8700	96	5

The all-atom clashscore is defined as the number of clashes found per 1000 atoms (including hydrogen atoms). The all-atom clashscore for this structure is 5.

The worst 5 of 96 close contacts within the same asymmetric unit are listed below, sorted by their clash magnitude.

Atom-1	Atom-2	Interatomic distance (Å)	Clash overlap (Å)
1:D:103:HIS:NE2	5:D:405:BU2:HC11	1.73	1.01
5:B:408[B]:BU2:O1	5:B:408[B]:BU2:O3	1.63	0.98
1:B:295[B]:THR:HG23	7:B:509:HOH:O	1.70	0.92
1:B:234:GLU:OE2	7:B:501:HOH:O	1.91	0.88
3:B:402[A]:BV8:C8	7:B:728:HOH:O	2.28	0.81

All (5) symmetry-related close contacts are listed below. The label for Atom-2 includes the symmetry operator and encoded unit-cell translations to be applied.

Atom-1	Atom-2	Interatomic distance (Å)	Clash overlap (Å)
7:B:547:HOH:O	7:D:729:HOH:O[1_455]	1.75	0.45
7:A:608:HOH:O	7:C:696:HOH:O[1_444]	1.76	0.44
7:A:580:HOH:O	7:A:768:HOH:O[1_455]	1.87	0.33
1:B:234:GLU:OE1	7:B:785:HOH:O[1_655]	2.11	0.09
1:D:147[A]:ARG:NH2	7:D:748:HOH:O[1_655]	2.12	0.08

5.3 Torsion angles [i](#)

5.3.1 Protein backbone [i](#)

In the following table, the Percentiles column shows the percent Ramachandran outliers of the chain as a percentile score with respect to all X-ray entries followed by that with respect to entries of similar resolution.

The Analysed column shows the number of residues for which the backbone conformation was

analysed, and the total number of residues.

Mol	Chain	Analysed	Favoured	Allowed	Outliers	Percentiles	
1	A	276/275 (100%)	273 (99%)	3 (1%)	0	100	100
1	B	276/275 (100%)	273 (99%)	3 (1%)	0	100	100
1	C	278/275 (101%)	274 (99%)	3 (1%)	1 (0%)	30	9
1	D	280/275 (102%)	277 (99%)	3 (1%)	0	100	100
All	All	1110/1100 (101%)	1097 (99%)	12 (1%)	1 (0%)	48	18

All (1) Ramachandran outliers are listed below:

Mol	Chain	Res	Type
1	C	30	ASP

5.3.2 Protein sidechains [i](#)

In the following table, the Percentiles column shows the percent sidechain outliers of the chain as a percentile score with respect to all X-ray entries followed by that with respect to entries of similar resolution.

The Analysed column shows the number of residues for which the sidechain conformation was analysed, and the total number of residues.

Mol	Chain	Analysed	Rotameric	Outliers	Percentiles	
1	A	223/219 (102%)	219 (98%)	4 (2%)	51	15
1	B	224/219 (102%)	220 (98%)	4 (2%)	51	15
1	C	225/219 (103%)	224 (100%)	1 (0%)	84	64
1	D	226/219 (103%)	226 (100%)	0	100	100
All	All	898/876 (102%)	889 (99%)	9 (1%)	73	36

5 of 9 residues with a non-rotameric sidechain are listed below:

Mol	Chain	Res	Type
1	B	253	VAL
1	C	246	LEU
1	A	284[B]	ARG
1	B	44	ARG
1	B	49	LYS

Sometimes sidechains can be flipped to improve hydrogen bonding and reduce clashes. All (2) such sidechains are listed below:

Mol	Chain	Res	Type
1	A	263	GLN
1	B	283	ASN

5.3.3 RNA [i](#)

There are no RNA molecules in this entry.

5.4 Non-standard residues in protein, DNA, RNA chains [i](#)

There are no non-standard protein/DNA/RNA residues in this entry.

5.5 Carbohydrates [i](#)

There are no oligosaccharides in this entry.

5.6 Ligand geometry [i](#)

Of 47 ligands modelled in this entry, 4 are monoatomic - leaving 43 for Mogul analysis.

In the following table, the Counts columns list the number of bonds (or angles) for which Mogul statistics could be retrieved, the number of bonds (or angles) that are observed in the model and the number of bonds (or angles) that are defined in the Chemical Component Dictionary. The Link column lists molecule types, if any, to which the group is linked. The Z score for a bond length (or angle) is the number of standard deviations the observed value is removed from the expected value. A bond length (or angle) with $|Z| > 2$ is considered an outlier worth inspection. RMSZ is the root-mean-square of all Z scores of the bond lengths (or angles).

Mol	Type	Chain	Res	Link	Bond lengths			Bond angles		
					Counts	RMSZ	$\# Z > 2$	Counts	RMSZ	$\# Z > 2$
5	BU2	D	405	-	5,5,5	1.47	0	5,5,5	2.57	2 (40%)
4	EDO	A	404[B]	-	3,3,3	0.85	0	2,2,2	2.03	1 (50%)
4	EDO	A	403[A]	-	3,3,3	1.24	1 (33%)	2,2,2	0.68	0
4	EDO	B	404[B]	-	3,3,3	0.38	0	2,2,2	0.59	0
6	DMS	A	410	-	3,3,3	0.52	0	3,3,3	1.73	1 (33%)
4	EDO	C	405	-	3,3,3	0.80	0	2,2,2	0.41	0
4	EDO	A	406	-	3,3,3	1.26	0	2,2,2	1.17	0
5	BU2	C	406	-	5,5,5	0.91	0	5,5,5	1.73	2 (40%)
6	DMS	A	411	-	3,3,3	0.38	0	3,3,3	1.96	1 (33%)
3	BV8	A	402[A]	-	85,86,86	1.77	19 (22%)	110,122,122	1.62	24 (21%)
4	EDO	B	407	-	3,3,3	0.50	0	2,2,2	0.78	0

Mol	Type	Chain	Res	Link	Bond lengths			Bond angles		
					Counts	RMSZ	# Z > 2	Counts	RMSZ	# Z > 2
4	EDO	A	403[B]	-	3,3,3	1.16	0	2,2,2	0.56	0
3	BV8	B	402[A]	-	85,86,86	2.05	19 (22%)	110,122,122	2.10	26 (23%)
5	BU2	B	410	-	5,5,5	0.90	0	5,5,5	0.96	0
3	BV8	C	402[A]	-	85,86,86	2.02	19 (22%)	110,122,122	1.64	22 (20%)
3	BV8	A	402[B]	-	85,86,86	2.30	19 (22%)	110,122,122	1.85	28 (25%)
4	EDO	C	404	-	3,3,3	0.94	0	2,2,2	0.32	0
3	BV8	D	402[B]	-	85,86,86	2.29	22 (25%)	110,122,122	1.67	21 (19%)
4	EDO	B	405[A]	-	3,3,3	0.66	0	2,2,2	0.10	0
4	EDO	D	403[A]	-	3,3,3	0.76	0	2,2,2	0.57	0
3	BV8	C	402[D]	-	85,86,86	1.93	21 (24%)	110,122,122	1.69	23 (20%)
5	BU2	B	408[A]	-	5,5,5	0.45	0	5,5,5	1.18	1 (20%)
3	BV8	B	402[B]	-	85,86,86	1.73	19 (22%)	110,122,122	1.70	25 (22%)
4	EDO	A	407	-	3,3,3	0.79	0	2,2,2	0.68	0
5	BU2	D	406	-	5,5,5	0.68	0	5,5,5	2.09	2 (40%)
4	EDO	B	406	-	3,3,3	1.37	0	2,2,2	0.73	0
4	EDO	B	403[A]	-	3,3,3	1.27	0	2,2,2	0.54	0
4	EDO	B	405[B]	-	3,3,3	0.84	0	2,2,2	0.98	0
4	EDO	D	403[B]	-	3,3,3	0.88	0	2,2,2	0.57	0
4	EDO	A	405[A]	-	3,3,3	0.89	0	2,2,2	0.15	0
3	BV8	D	402[C]	-	85,86,86	2.23	26 (30%)	110,122,122	1.73	25 (22%)
4	EDO	D	404[A]	-	3,3,3	0.81	0	2,2,2	0.24	0
4	EDO	C	403[A]	-	3,3,3	1.63	1 (33%)	2,2,2	1.06	0
5	BU2	B	408[B]	-	5,5,5	0.56	0	5,5,5	2.85	2 (40%)
5	BU2	A	409	-	5,5,5	1.52	1 (20%)	5,5,5	1.69	1 (20%)
4	EDO	A	404[A]	-	3,3,3	0.42	0	2,2,2	0.99	0
5	BU2	A	408	-	5,5,5	1.03	0	5,5,5	3.65	1 (20%)
4	EDO	B	403[B]	-	3,3,3	0.85	0	2,2,2	0.37	0
4	EDO	A	405[B]	-	3,3,3	0.35	0	2,2,2	0.71	0
5	BU2	B	409	-	5,5,5	0.65	0	5,5,5	1.37	0
4	EDO	C	403[B]	-	3,3,3	0.82	0	2,2,2	0.48	0
4	EDO	B	404[A]	-	3,3,3	0.34	0	2,2,2	0.49	0
4	EDO	D	404[B]	-	3,3,3	0.44	0	2,2,2	1.34	0

In the following table, the Chirals column lists the number of chiral outliers, the number of chiral centers analysed, the number of these observed in the model and the number defined in the Chemical Component Dictionary. Similar counts are reported in the Torsion and Rings columns. '-' means no outliers of that kind were identified.

Mol	Type	Chain	Res	Link	Chirals	Torsions	Rings
5	BU2	D	405	-	-	0/3/3/3	-

Continued on next page...

Continued from previous page...

Mol	Type	Chain	Res	Link	Chirals	Torsions	Rings
4	EDO	A	404[B]	-	-	0/1/1/1	-
4	EDO	A	403[A]	-	-	0/1/1/1	-
4	EDO	B	404[B]	-	-	1/1/1/1	-
4	EDO	C	405	-	-	1/1/1/1	-
4	EDO	A	406	-	-	1/1/1/1	-
5	BU2	C	406	-	-	3/3/3/3	-
3	BV8	A	402[A]	-	-	3/63/101/101	0/7/7/7
4	EDO	B	407	-	-	1/1/1/1	-
4	EDO	A	403[B]	-	-	0/1/1/1	-
3	BV8	B	402[A]	-	-	3/63/101/101	0/7/7/7
5	BU2	B	410	-	-	3/3/3/3	-
3	BV8	C	402[A]	-	-	7/63/101/101	0/7/7/7
3	BV8	A	402[B]	-	-	3/63/101/101	0/7/7/7
4	EDO	C	404	-	-	0/1/1/1	-
3	BV8	D	402[B]	-	-	4/63/101/101	0/7/7/7
4	EDO	B	405[A]	-	-	0/1/1/1	-
4	EDO	D	403[A]	-	-	0/1/1/1	-
3	BV8	C	402[D]	-	-	3/63/101/101	0/7/7/7
5	BU2	B	408[A]	-	-	1/3/3/3	-
3	BV8	B	402[B]	-	-	3/63/101/101	0/7/7/7
4	EDO	A	407	-	-	1/1/1/1	-
5	BU2	D	406	-	-	2/3/3/3	-
4	EDO	B	406	-	-	0/1/1/1	-
4	EDO	B	403[A]	-	-	0/1/1/1	-
4	EDO	B	405[B]	-	-	0/1/1/1	-
4	EDO	D	403[B]	-	-	0/1/1/1	-
4	EDO	A	405[A]	-	-	1/1/1/1	-
3	BV8	D	402[C]	-	-	2/63/101/101	0/7/7/7
4	EDO	D	404[A]	-	-	0/1/1/1	-
4	EDO	C	403[A]	-	-	0/1/1/1	-
5	BU2	B	408[B]	-	-	2/3/3/3	-
5	BU2	A	409	-	-	0/3/3/3	-
4	EDO	A	404[A]	-	-	1/1/1/1	-
5	BU2	A	408	-	-	1/3/3/3	-
4	EDO	B	403[B]	-	-	1/1/1/1	-
4	EDO	A	405[B]	-	-	0/1/1/1	-
5	BU2	B	409	-	-	1/3/3/3	-
4	EDO	C	403[B]	-	-	0/1/1/1	-
4	EDO	B	404[A]	-	-	0/1/1/1	-

Continued on next page...

Continued from previous page...

Mol	Type	Chain	Res	Link	Chirals	Torsions	Rings
4	EDO	D	404[B]	-	-	1/1/1/1	-

The worst 5 of 167 bond length outliers are listed below:

Mol	Chain	Res	Type	Atoms	Z	Observed(Å)	Ideal(Å)
3	D	402[B]	BV8	P2-O13	11.42	1.71	1.59
3	B	402[A]	BV8	C10-C11	-8.77	1.30	1.41
3	A	402[B]	BV8	C10-C11	-8.62	1.30	1.41
3	D	402[C]	BV8	P2-O13	8.58	1.68	1.59
3	A	402[B]	BV8	C10-C13	-8.56	1.30	1.44

The worst 5 of 208 bond angle outliers are listed below:

Mol	Chain	Res	Type	Atoms	Z	Observed(°)	Ideal(°)
5	A	408	BU2	C1-C2-C3	7.78	134.98	114.08
3	A	402[B]	BV8	N10-C46-N9	-7.25	117.60	128.58
3	B	402[A]	BV8	C14-C13-C10	-7.11	113.03	126.70
3	B	402[A]	BV8	N10-C46-N9	-6.92	118.11	128.58
3	B	402[B]	BV8	N10-C46-N9	-6.87	118.18	128.58

There are no chirality outliers.

5 of 50 torsion outliers are listed below:

Mol	Chain	Res	Type	Atoms
5	A	408	BU2	C1-C2-C3-C4
5	B	408[A]	BU2	O1-C1-C2-C3
5	B	408[B]	BU2	O1-C1-C2-C3
5	B	409	BU2	O1-C1-C2-C3
5	B	410	BU2	O1-C1-C2-C3

There are no ring outliers.

18 monomers are involved in 47 short contacts:

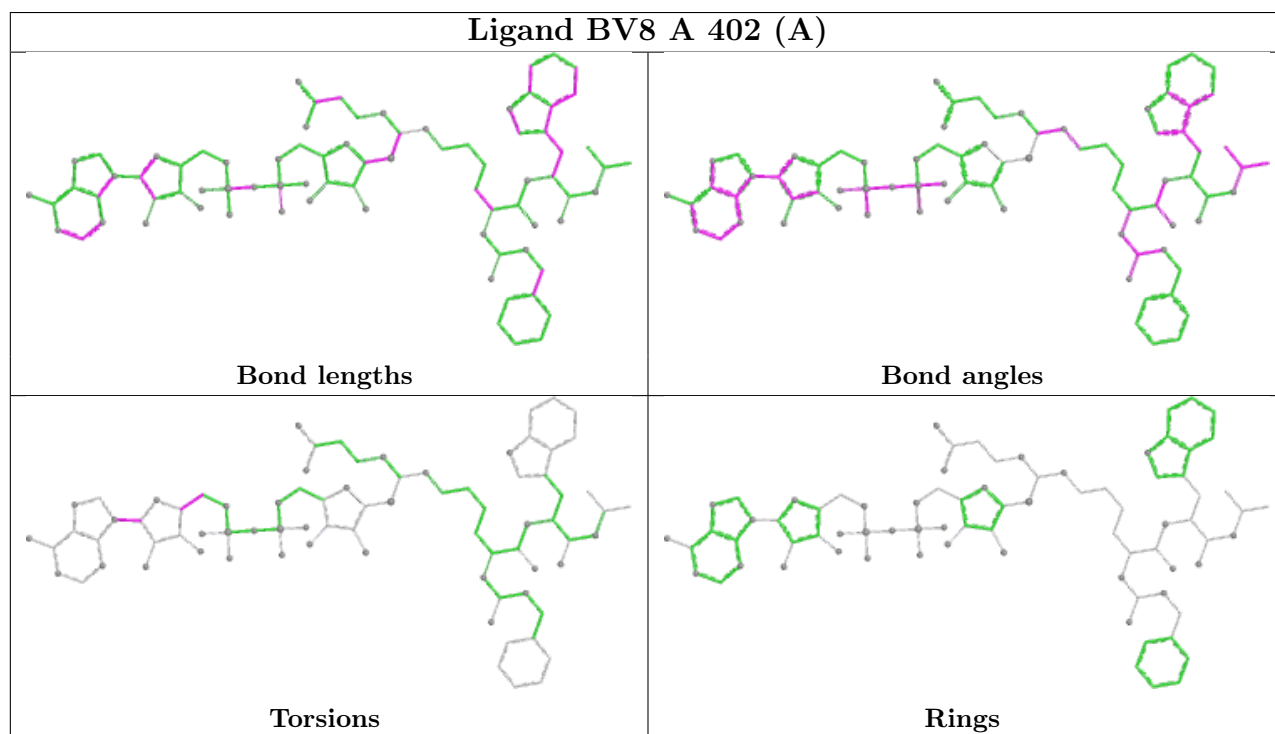
Mol	Chain	Res	Type	Clashes	Symm-Clashes
5	D	405	BU2	4	0
4	A	403[A]	EDO	3	0
4	B	404[B]	EDO	1	0
4	A	406	EDO	2	0
4	A	403[B]	EDO	1	0
3	B	402[A]	BV8	7	0
5	B	410	BU2	4	0

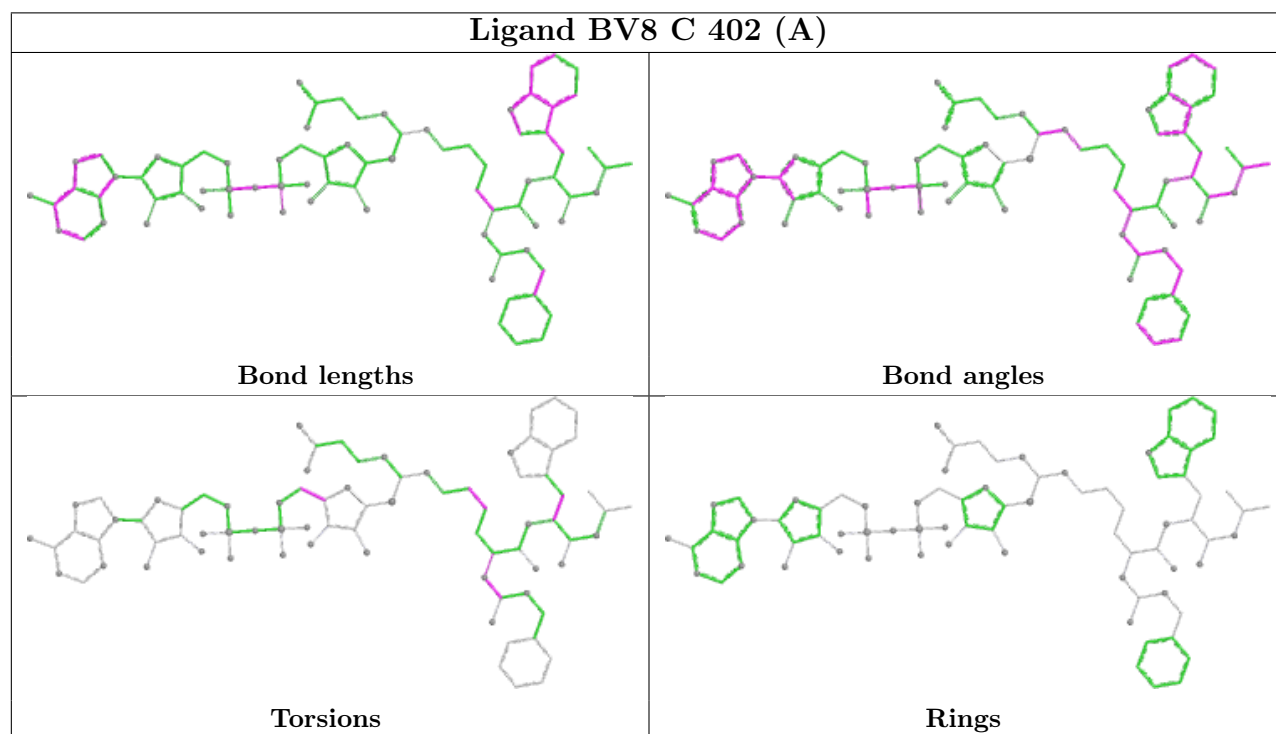
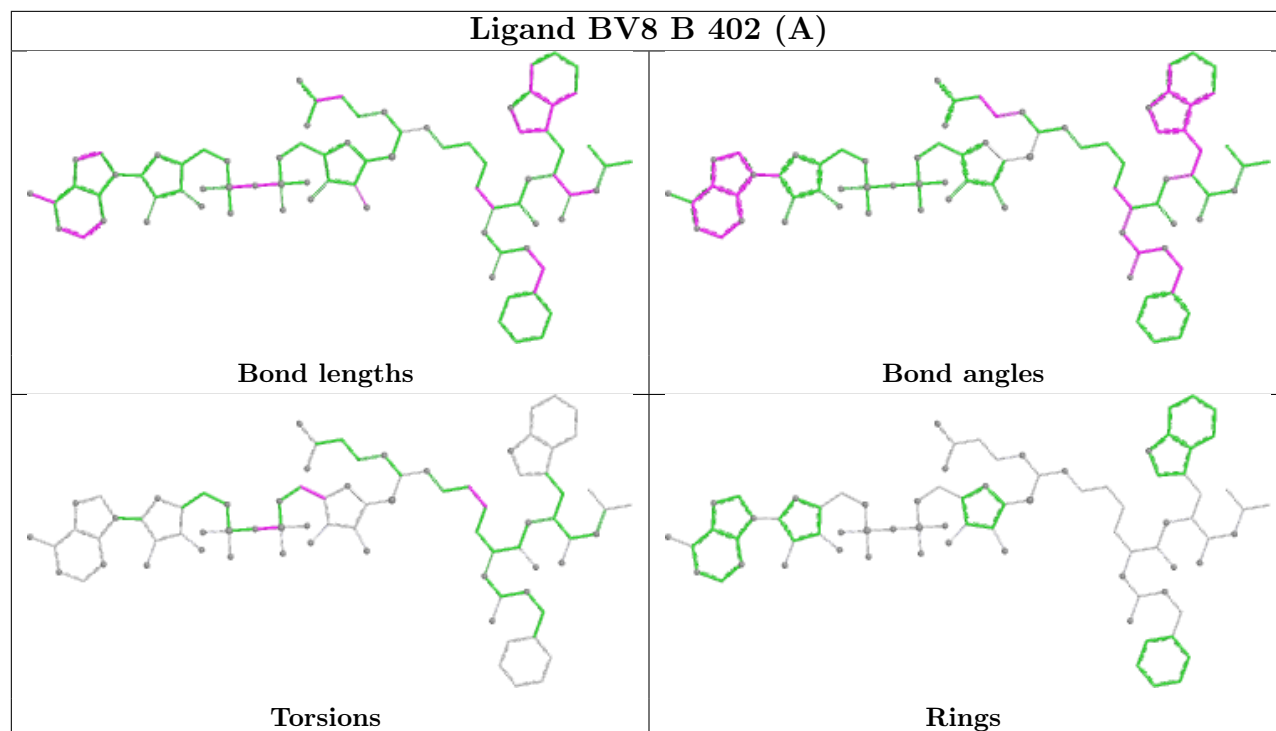
Continued on next page...

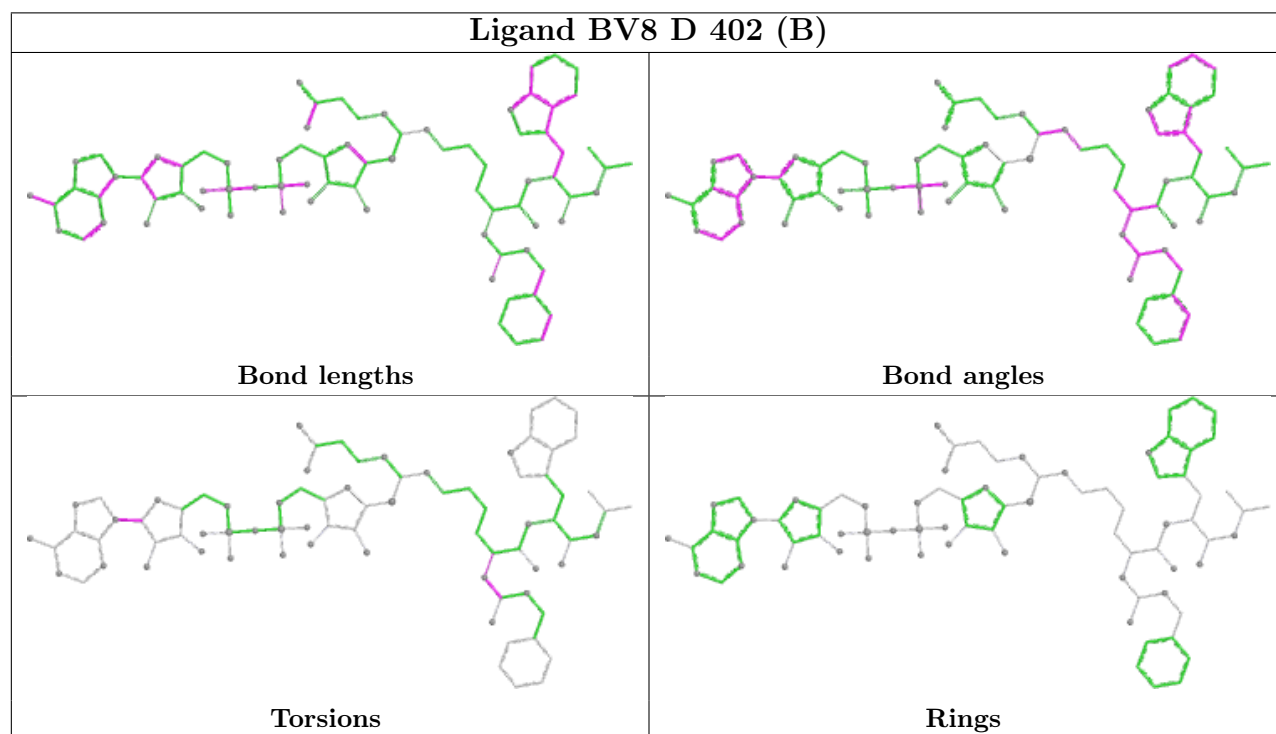
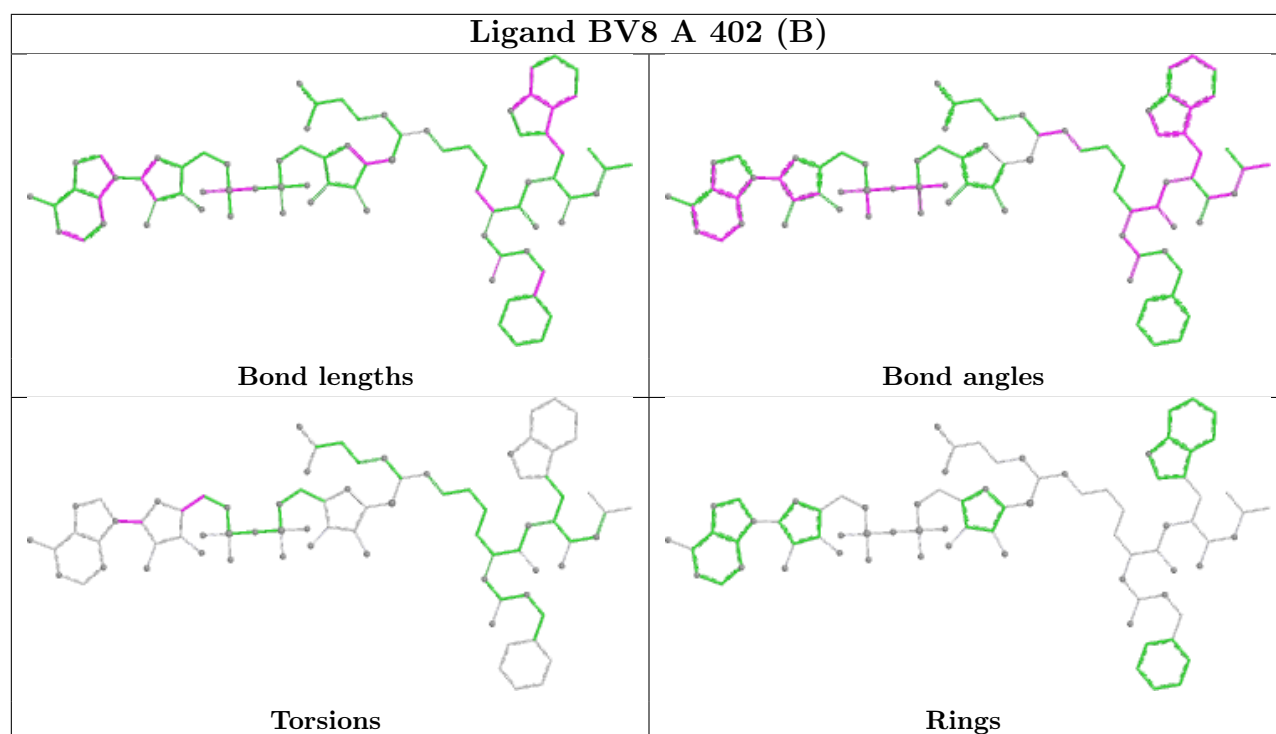
Continued from previous page...

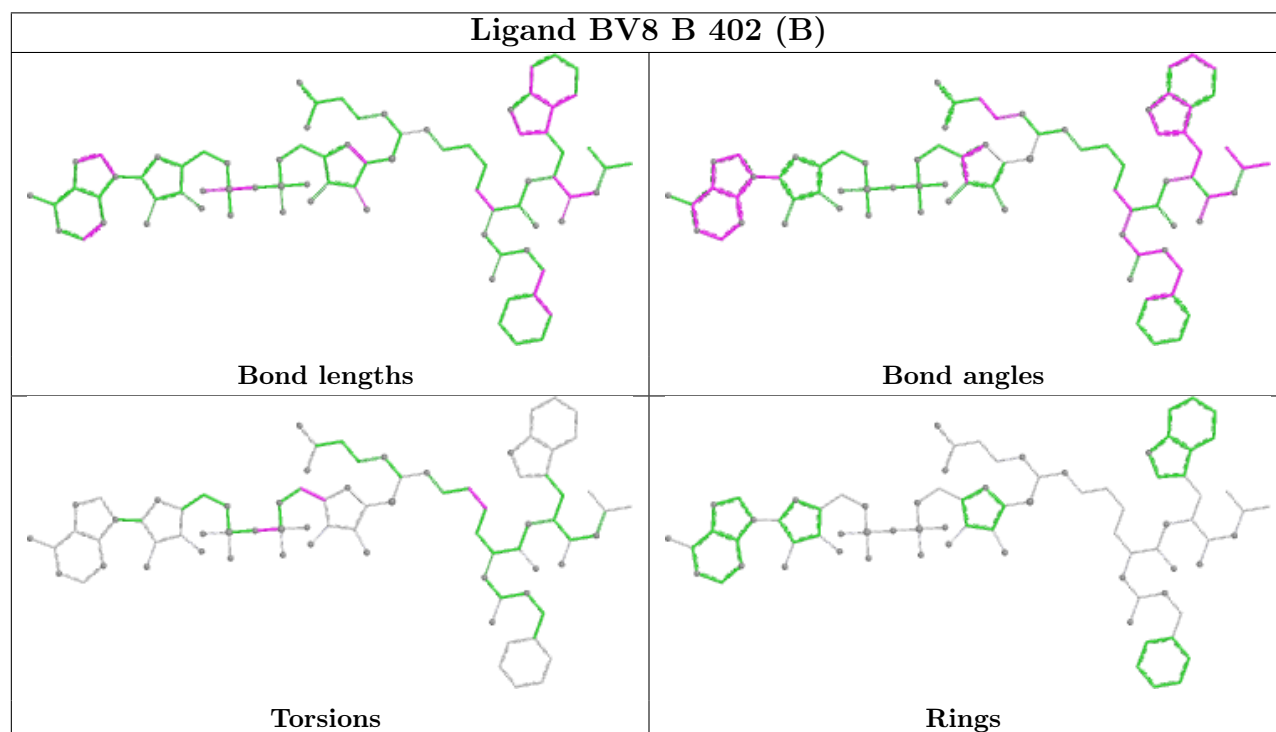
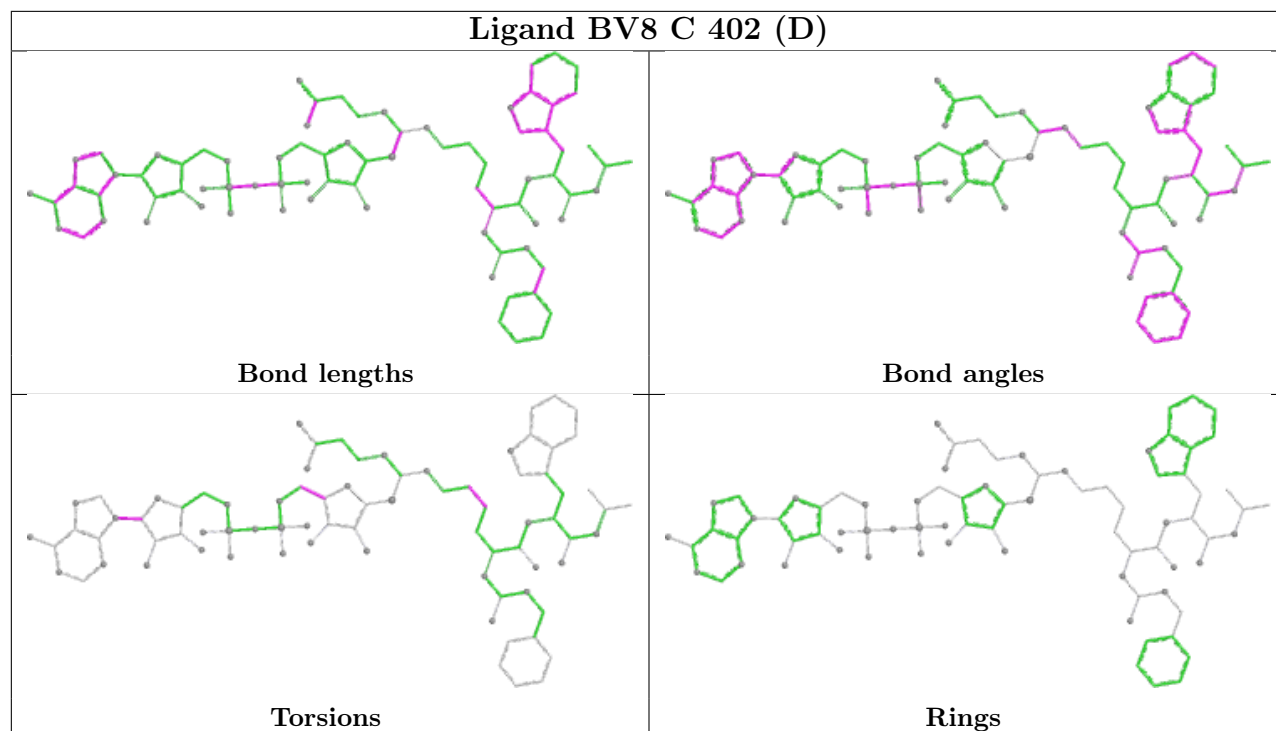
Mol	Chain	Res	Type	Clashes	Symm-Clashes
3	C	402[A]	BV8	2	0
4	C	404	EDO	1	0
3	D	402[B]	BV8	2	0
3	C	402[D]	BV8	1	0
5	B	408[A]	BU2	4	0
3	B	402[B]	BV8	2	0
4	B	406	EDO	4	0
5	B	408[B]	BU2	2	0
4	A	404[A]	EDO	3	0
5	A	408	BU2	9	0
5	B	409	BU2	3	0

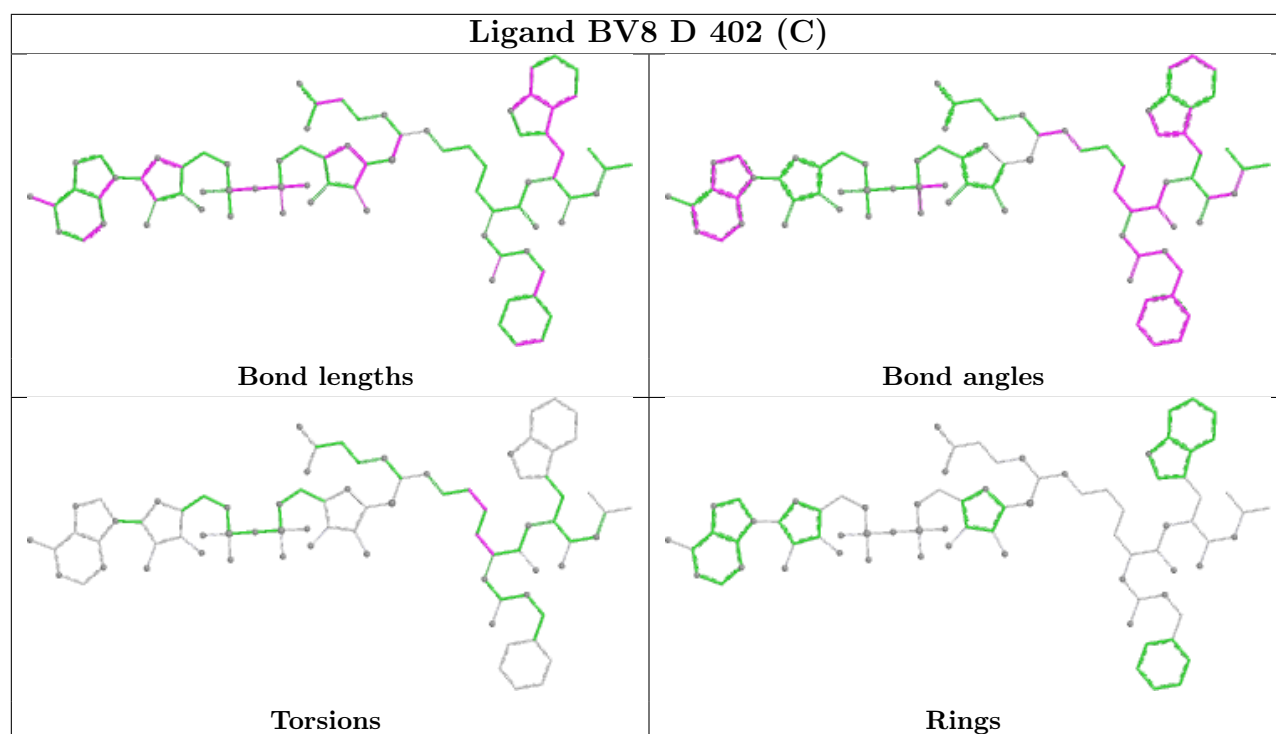
The following is a two-dimensional graphical depiction of Mogul quality analysis of bond lengths, bond angles, torsion angles, and ring geometry for all instances of the Ligand of Interest. In addition, ligands with molecular weight > 250 and outliers as shown on the validation Tables will also be included. For torsion angles, if less than 5% of the Mogul distribution of torsion angles is within 10 degrees of the torsion angle in question, then that torsion angle is considered an outlier. Any bond that is central to one or more torsion angles identified as an outlier by Mogul will be highlighted in the graph. For rings, the root-mean-square deviation (RMSD) between the ring in question and similar rings identified by Mogul is calculated over all ring torsion angles. If the average RMSD is greater than 60 degrees and the minimal RMSD between the ring in question and any Mogul-identified rings is also greater than 60 degrees, then that ring is considered an outlier. The outliers are highlighted in purple. The color gray indicates Mogul did not find sufficient equivalents in the CSD to analyse the geometry.











5.7 Other polymers [\(i\)](#)

There are no such residues in this entry.

5.8 Polymer linkage issues [\(i\)](#)

There are no chain breaks in this entry.

6 Fit of model and data [i](#)

6.1 Protein, DNA and RNA chains [i](#)

In the following table, the column labelled ‘#RSRZ> 2’ contains the number (and percentage) of RSRZ outliers, followed by percent RSRZ outliers for the chain as percentile scores relative to all X-ray entries and entries of similar resolution. The OWAB column contains the minimum, median, 95th percentile and maximum values of the occupancy-weighted average B-factor per residue. The column labelled ‘Q< 0.9’ lists the number of (and percentage) of residues with an average occupancy less than 0.9.

Mol	Chain	Analysed	<RSRZ>	#RSRZ>2	OWAB(Å ²)	Q<0.9
1	A	269/275 (97%)	-0.28	1 (0%) 88 92	7, 16, 30, 63	9 (3%)
1	B	268/275 (97%)	-0.25	0 100 100	8, 16, 31, 76	10 (3%)
1	C	274/275 (99%)	-0.04	3 (1%) 78 83	7, 19, 42, 97	6 (2%)
1	D	275/275 (100%)	-0.06	2 (0%) 84 88	8, 18, 41, 113	7 (2%)
All	All	1086/1100 (98%)	-0.16	6 (0%) 85 90	7, 17, 37, 113	32 (2%)

The worst 5 of 6 RSRZ outliers are listed below:

Mol	Chain	Res	Type	RSRZ
1	C	29	ILE	6.2
1	D	29	ILE	5.5
1	A	34	ALA	3.0
1	D	28	GLY	2.3
1	C	75	GLY	2.2

6.2 Non-standard residues in protein, DNA, RNA chains [i](#)

There are no non-standard protein/DNA/RNA residues in this entry.

6.3 Carbohydrates [i](#)

There are no oligosaccharides in this entry.

6.4 Ligands [i](#)

In the following table, the Atoms column lists the number of modelled atoms in the group and the number defined in the chemical component dictionary. The B-factors column lists the minimum, median, 95th percentile and maximum values of B factors of atoms in the group. The column labelled ‘Q< 0.9’ lists the number of atoms with occupancy less than 0.9.

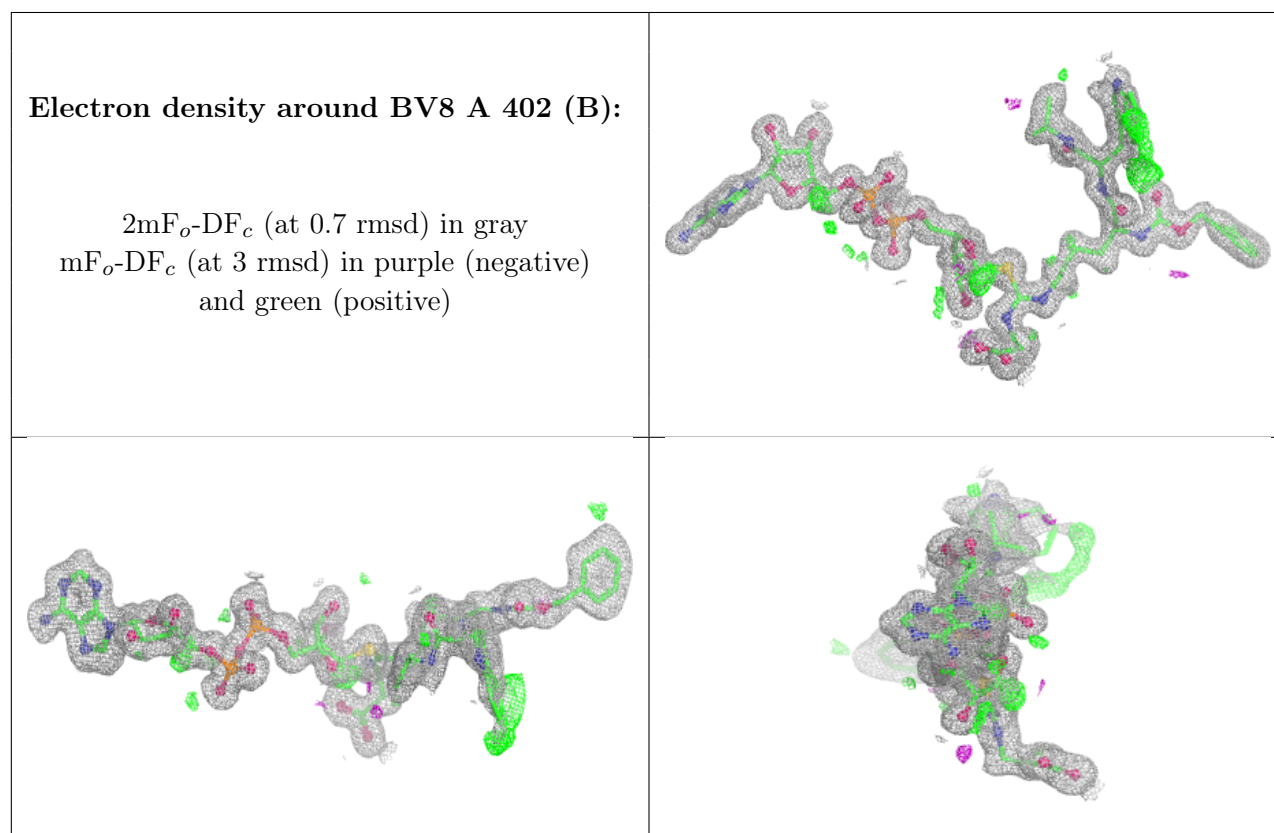
Mol	Type	Chain	Res	Atoms	RSCC	RSR	B-factors(\AA^2)	Q<0.9
4	EDO	B	407	4/4	0.81	0.13	51,55,55,92	0
4	EDO	C	405	4/4	0.81	0.15	33,41,42,58	0
4	EDO	A	407	4/4	0.84	0.12	32,37,46,55	0
5	BU2	A	409	6/6	0.84	0.14	38,51,56,60	0
5	BU2	C	406	6/6	0.84	0.17	32,41,48,50	0
5	BU2	D	406	6/6	0.84	0.14	44,56,64,82	0
6	DMS	A	411	4/4	0.85	0.15	56,71,83,86	0
5	BU2	B	410	6/6	0.88	0.12	32,39,50,57	0
4	EDO	C	404	4/4	0.88	0.14	55,57,68,73	0
5	BU2	A	408	6/6	0.89	0.11	29,35,44,59	0
5	BU2	D	405	6/6	0.89	0.14	32,43,71,110	0
4	EDO	A	405[A]	4/4	0.89	0.14	30,36,42,46	4
4	EDO	A	405[B]	4/4	0.89	0.14	20,27,32,34	4
6	DMS	A	410	4/4	0.90	0.14	51,54,67,79	0
4	EDO	B	405[B]	4/4	0.91	0.13	27,29,41,42	4
4	EDO	A	404[B]	4/4	0.91	0.17	16,18,20,25	4
4	EDO	A	404[A]	4/4	0.91	0.17	13,22,25,33	4
4	EDO	B	405[A]	4/4	0.91	0.13	33,43,46,49	4
4	EDO	B	404[B]	4/4	0.92	0.10	15,22,26,29	4
4	EDO	B	404[A]	4/4	0.92	0.10	26,32,34,35	4
5	BU2	B	409	6/6	0.92	0.11	31,39,44,51	0
5	BU2	B	408[B]	6/6	0.93	0.10	25,27,28,34	6
5	BU2	B	408[A]	6/6	0.93	0.10	21,24,31,43	6
4	EDO	A	406	4/4	0.94	0.10	24,29,29,60	0
4	EDO	D	404[B]	4/4	0.95	0.07	28,29,30,34	4
4	EDO	B	406	4/4	0.95	0.08	26,27,29,58	0
4	EDO	D	404[A]	4/4	0.95	0.07	22,23,25,27	4
4	EDO	D	403[B]	4/4	0.96	0.08	16,19,20,22	4
4	EDO	D	403[A]	4/4	0.96	0.08	10,10,12,13	4
3	BV8	A	402[B]	80/80	0.97	0.06	5,9,34,46	80
3	BV8	B	402[A]	80/80	0.97	0.07	14,19,38,51	80
3	BV8	B	402[B]	80/80	0.97	0.07	7,11,33,40	80
4	EDO	A	403[A]	4/4	0.97	0.06	6,7,9,12	4
4	EDO	A	403[B]	4/4	0.97	0.06	15,16,21,28	4
4	EDO	C	403[A]	4/4	0.97	0.07	13,14,15,17	4
4	EDO	C	403[B]	4/4	0.97	0.07	10,11,15,15	4
3	BV8	A	402[A]	80/80	0.97	0.06	13,19,33,39	80
4	EDO	B	403[B]	4/4	0.98	0.10	10,12,14,20	4
4	EDO	B	403[A]	4/4	0.98	0.10	10,10,10,13	4
3	BV8	D	402[C]	80/80	0.99	0.04	9,17,24,36	80
3	BV8	C	402[A]	80/80	0.99	0.05	8,13,24,32	80
3	BV8	C	402[D]	80/80	0.99	0.05	7,18,24,28	80
3	BV8	D	402[B]	80/80	0.99	0.04	8,12,19,24	80

Continued on next page...

Continued from previous page...

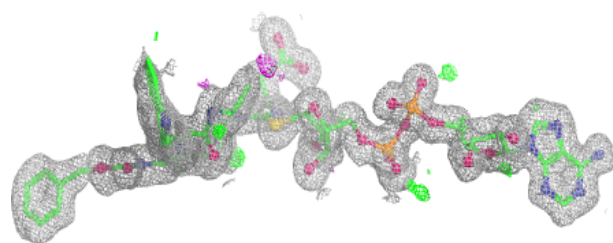
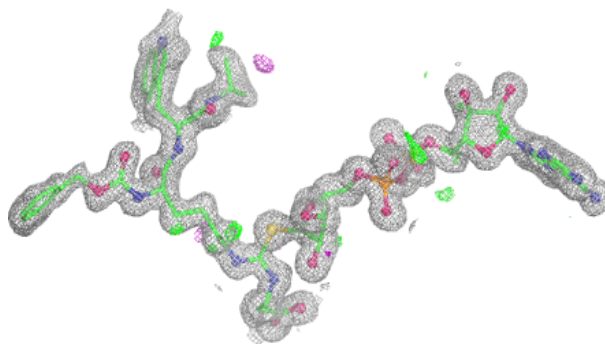
Mol	Type	Chain	Res	Atoms	RSCC	RSR	B-factors(\AA^2)	Q<0.9
2	ZN	D	401	1/1	1.00	0.03	17,17,17,17	0
2	ZN	A	401	1/1	1.00	0.01	15,15,15,15	0
2	ZN	B	401	1/1	1.00	0.03	16,16,16,16	0
2	ZN	C	401	1/1	1.00	0.01	19,19,19,19	0

The following is a graphical depiction of the model fit to experimental electron density of all instances of the Ligand of Interest. In addition, ligands with molecular weight > 250 and outliers as shown on the geometry validation Tables will also be included. Each fit is shown from different orientation to approximate a three-dimensional view.

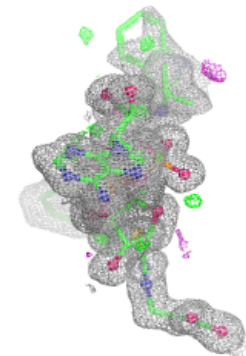
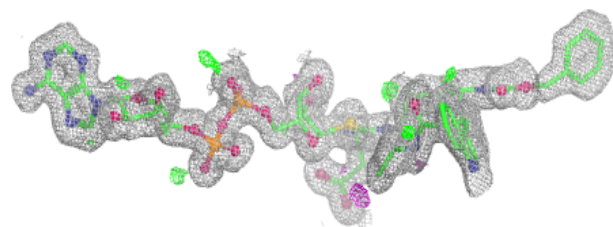
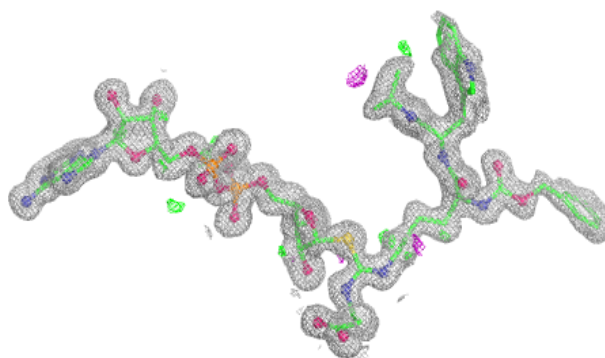


Electron density around BV8 B 402 (A):

$2mF_o-DF_c$ (at 0.7 rmsd) in gray
 mF_o-DF_c (at 3 rmsd) in purple (negative)
and green (positive)

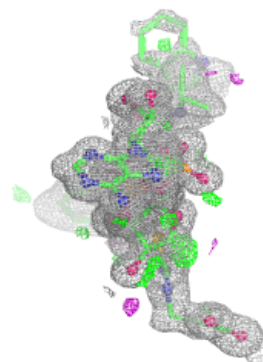
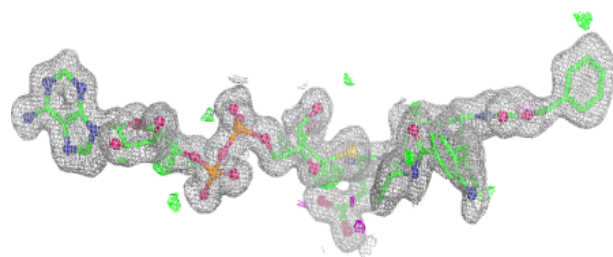
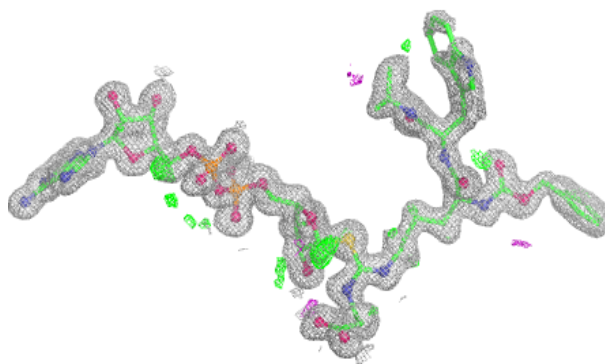
**Electron density around BV8 B 402 (B):**

$2mF_o-DF_c$ (at 0.7 rmsd) in gray
 mF_o-DF_c (at 3 rmsd) in purple (negative)
and green (positive)

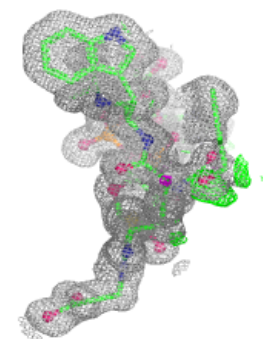
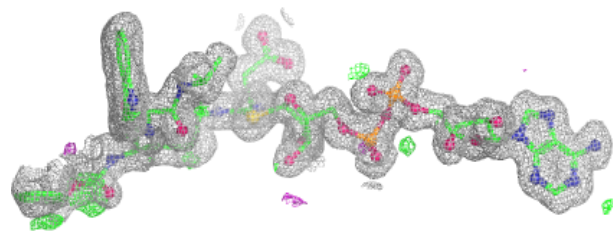
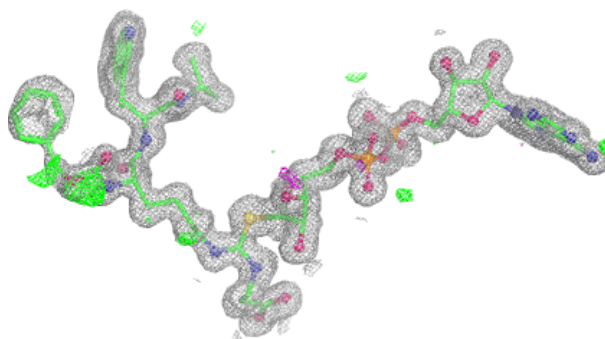


Electron density around BV8 A 402 (A):

$2mF_o-DF_c$ (at 0.7 rmsd) in gray
 mF_o-DF_c (at 3 rmsd) in purple (negative)
and green (positive)

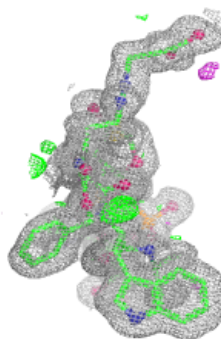
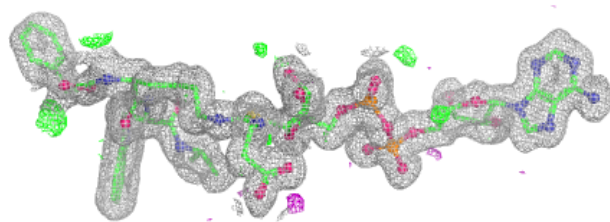
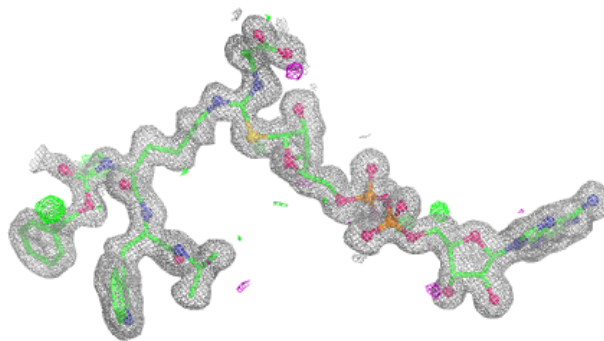
**Electron density around BV8 D 402 (C):**

$2mF_o-DF_c$ (at 0.7 rmsd) in gray
 mF_o-DF_c (at 3 rmsd) in purple (negative)
and green (positive)

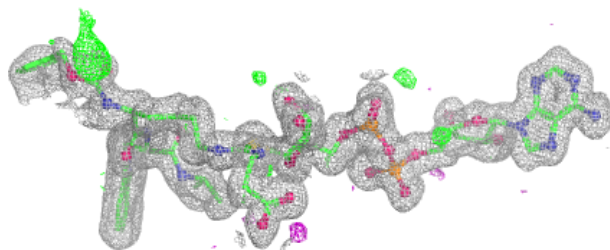
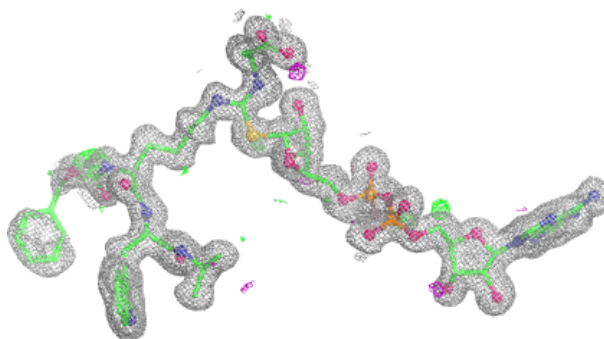


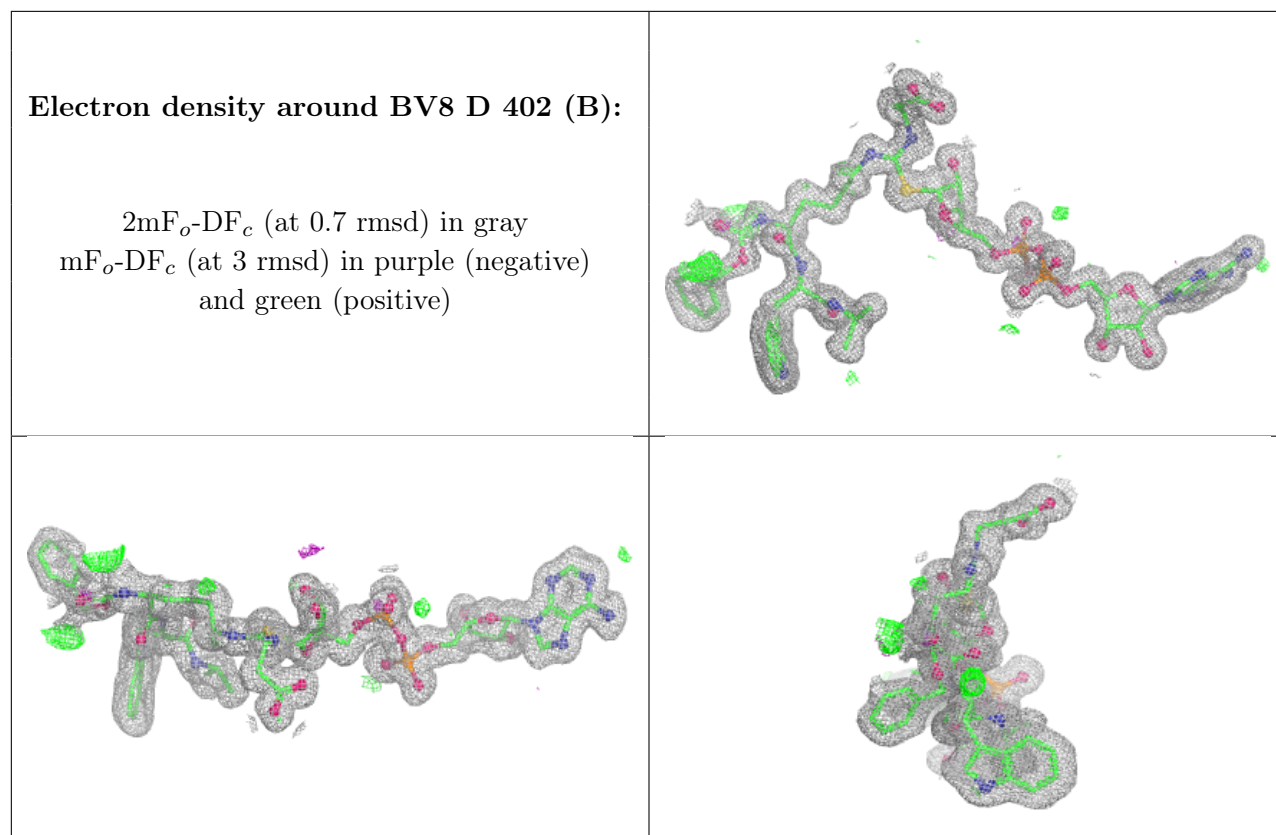
Electron density around BV8 C 402 (A):

$2mF_o-DF_c$ (at 0.7 rmsd) in gray
 mF_o-DF_c (at 3 rmsd) in purple (negative)
and green (positive)

**Electron density around BV8 C 402 (D):**

$2mF_o-DF_c$ (at 0.7 rmsd) in gray
 mF_o-DF_c (at 3 rmsd) in purple (negative)
and green (positive)





6.5 Other polymers [i](#)

There are no such residues in this entry.