



Full wwPDB X-ray Structure Validation Report ⓘ

Mar 6, 2026 – 08:36 AM UTC

PDB ID : 6ERC / pdb_00006erc
Title : Peroxidase A from Dictyostelium discoideum (DdPoxA)
Authors : Nicolussi, A.; Mlynek, G.; Furtmueller, P.G.; Djinovic-Carugo, K.; Obinger, C.
Deposited on : 2017-10-17
Resolution : 2.50 Å(reported)

This is a Full wwPDB X-ray Structure Validation Report for a publicly released PDB entry.

We welcome your comments at validation@mail.wwpdb.org

A user guide is available at

<https://www.wwpdb.org/validation/2017/XrayValidationReportHelp>

with specific help available everywhere you see the ⓘ symbol.

The types of validation reports are described at

<http://www.wwpdb.org/validation/2017/FAQs#types>.

The following versions of software and data (see [references ⓘ](#)) were used in the production of this report:

MolProbity : 4-5-2 with Phenix2.0
Mogul : 2022.3.0, CSD as543be (2022)
Xtrriage (Phenix) : 2.0
EDS : 3.0
Buster-report : wwPDB partial adaption of 1.1.7 (2018)
Percentile statistics : 20250101.v01 (using entries in the PDB archive January 1st 2025)
CCP4 : 9.0.010 (Gargrove)
Density-Fitness : 1.0.12
Ideal geometry (proteins) : Engh & Huber (2001)
Ideal geometry (DNA, RNA) : Parkinson et al. (1996)
Validation Pipeline (wwPDB-VP) : 2.49

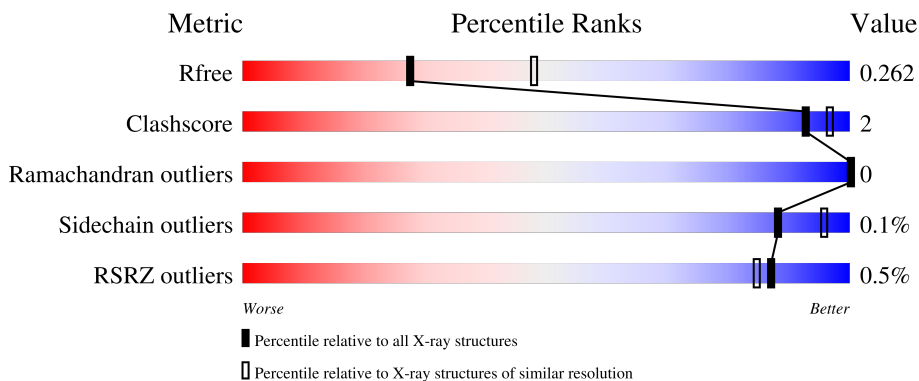
1 Overall quality at a glance

The following experimental techniques were used to determine the structure:

X-RAY DIFFRACTION

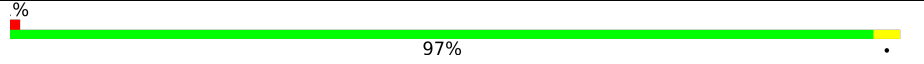
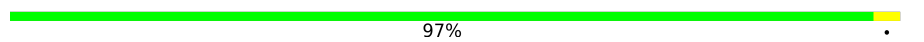
The reported resolution of this entry is 2.50 Å.

Percentile scores (ranging between 0-100) for global validation metrics of the entry are shown in the following graphic. The table shows the number of entries on which the scores are based.



Metric	Whole archive (#Entries)	Similar resolution (#Entries, resolution range(Å))
R_{free}	180053	5829 (2.50-2.50)
Clashscore	190562	6492 (2.50-2.50)
Ramachandran outliers	187476	6378 (2.50-2.50)
Sidechain outliers	187428	6380 (2.50-2.50)
RSRZ outliers	180081	5833 (2.50-2.50)

The table below summarises the geometric issues observed across the polymeric chains and their fit to the electron density. The red, orange, yellow and green segments of the lower bar indicate the fraction of residues that contain outliers for ≥ 3 , 2, 1 and 0 types of geometric quality criteria respectively. A grey segment represents the fraction of residues that are not modelled. The numeric value for each fraction is indicated below the corresponding segment, with a dot representing fractions $\leq 5\%$. The upper red bar (where present) indicates the fraction of residues that have poor fit to the electron density. The numeric value is given above the bar.

Mol	Chain	Length	Quality of chain
1	A	511	 97%
1	B	511	 97%

2 Entry composition [i](#)

There are 10 unique types of molecules in this entry. The entry contains 16696 atoms, of which 8110 are hydrogens and 0 are deuteriums.

In the tables below, the ZeroOcc column contains the number of atoms modelled with zero occupancy, the AltConf column contains the number of residues with at least one atom in alternate conformation and the Trace column contains the number of residues modelled with at most 2 atoms.

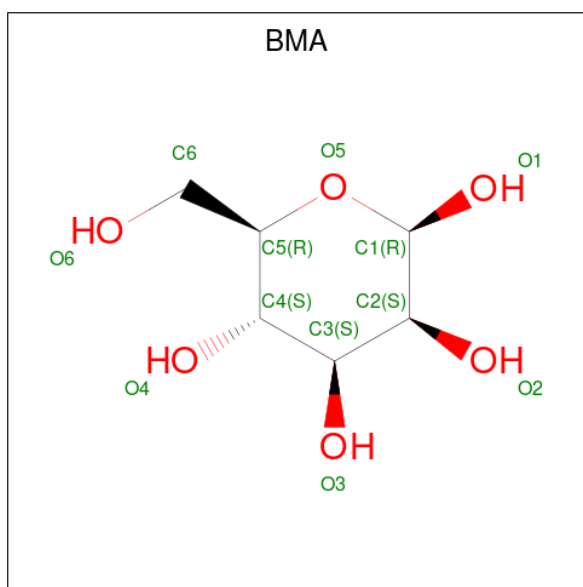
- Molecule 1 is a protein called Peroxinectin A.

Mol	Chain	Residues	Atoms					ZeroOcc	AltConf	Trace	
			Total	C	H	N	O				S
1	A	511	Total 8090	C 2593	H 3970	N 723	O 784	S 20	0	0	0
1	B	511	Total 8093	C 2593	H 3973	N 723	O 784	S 20	0	0	0

- Molecule 2 is 2-acetamido-2-deoxy-beta-D-glucopyranose (CCD ID: NAG) (formula: $C_8H_{15}NO_6$).

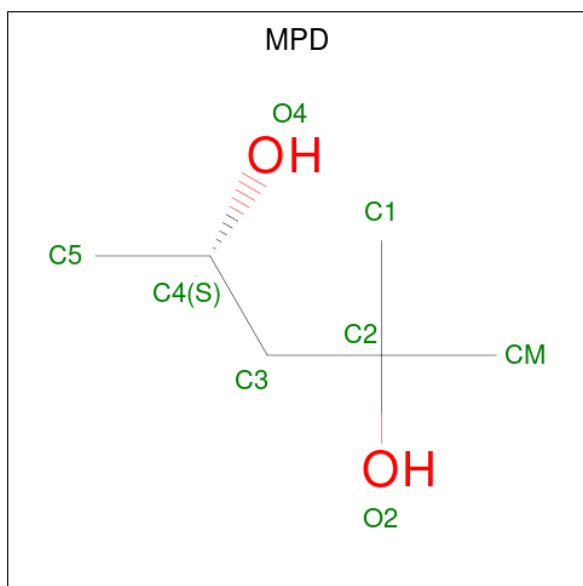


Mol	Chain	Residues	Atoms					ZeroOcc	AltConf
			Total	C	H	N	O		
2	A	1	Total 28	C 8	H 14	N 1	O 5	0	0
2	A	1	Total 28	C 8	H 14	N 1	O 5	0	0
2	A	1	Total 28	C 8	H 14	N 1	O 5	0	0
2	B	1	Total 28	C 8	H 14	N 1	O 5	0	0



Mol	Chain	Residues	Atoms				ZeroOcc	AltConf
			Total	C	H	O		
5	A	1	22	6	11	5	0	0

- Molecule 6 is (4S)-2-METHYL-2,4-PENTANEDIOL (CCD ID: MPD) (formula: C₆H₁₄O₂).



Mol	Chain	Residues	Atoms				ZeroOcc	AltConf
			Total	C	H	O		
6	A	1	22	6	14	2	0	0
6	B	1	22	6	14	2	0	0

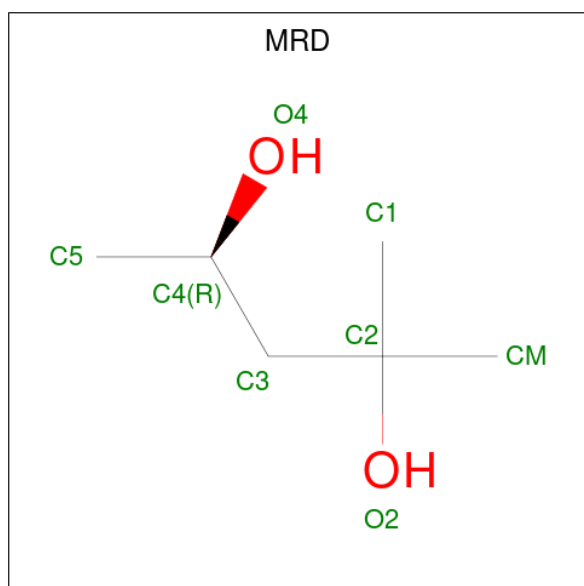
- Molecule 7 is CHLORIDE ION (CCD ID: CL) (formula: Cl).

Mol	Chain	Residues	Atoms	ZeroOcc	AltConf
7	A	1	Total Cl 1 1	0	0

- Molecule 8 is SODIUM ION (CCD ID: NA) (formula: Na).

Mol	Chain	Residues	Atoms	ZeroOcc	AltConf
8	A	1	Total Na 1 1	0	0
8	B	1	Total Na 1 1	0	0

- Molecule 9 is (4R)-2-METHYLPENTANE-2,4-DIOL (CCD ID: MRD) (formula: C₆H₁₄O₂).



Mol	Chain	Residues	Atoms	ZeroOcc	AltConf
9	B	1	Total C H O 22 6 14 2	0	0

- Molecule 10 is water.

Mol	Chain	Residues	Atoms	ZeroOcc	AltConf
10	A	102	Total O 102 102	0	0
10	B	62	Total O 62 62	0	0

3 Residue-property plots [i](#)

These plots are drawn for all protein, RNA, DNA and oligosaccharide chains in the entry. The first graphic for a chain summarises the proportions of the various outlier classes displayed in the second graphic. The second graphic shows the sequence view annotated by issues in geometry and electron density. Residues are color-coded according to the number of geometric quality criteria for which they contain at least one outlier: green = 0, yellow = 1, orange = 2 and red = 3 or more. A red dot above a residue indicates a poor fit to the electron density ($RSRZ > 2$). Stretches of 2 or more consecutive residues without any outlier are shown as a green connector. Residues present in the sample, but not in the model, are shown in grey.

- Molecule 1: Peroxinectin A

Chain A:  97%



- Molecule 1: Peroxinectin A

Chain B:  97%



4 Data and refinement statistics i

Property	Value	Source
Space group	P 31 2 1	Depositor
Cell constants a, b, c, α , β , γ	128.25Å 128.25Å 146.01Å 90.00° 90.00° 120.00°	Depositor
Resolution (Å)	48.67 – 2.50 48.67 – 2.50	Depositor EDS
% Data completeness (in resolution range)	100.0 (48.67-2.50) 100.0 (48.67-2.50)	Depositor EDS
R_{merge}	0.31	Depositor
R_{sym}	(Not available)	Depositor
$\langle I/\sigma(I) \rangle$ ¹	1.12 (at 1.76Å)	Xtrriage
Refinement program	PHENIX 1.12_2829	Depositor
R, R_{free}	0.228 , 0.257 0.229 , 0.262	Depositor DCC
R_{free} test set	1189 reflections (1.46%)	wwPDB-VP
Wilson B-factor (Å ²)	36.2	Xtrriage
Anisotropy	0.415	Xtrriage
Bulk solvent k_{sol} (e/Å ³), B_{sol} (Å ²)	0.39 , 29.8	EDS
L-test for twinning ²	$\langle L \rangle = 0.48$, $\langle L^2 \rangle = 0.31$	Xtrriage
Estimated twinning fraction	0.020 for -h,-k,l	Xtrriage
F_o, F_c correlation	0.94	EDS
Total number of atoms	16696	wwPDB-VP
Average B, all atoms (Å ²)	71.0	wwPDB-VP

Xtrriage's analysis on translational NCS is as follows: *The largest off-origin peak in the Patterson function is 3.22% of the height of the origin peak. No significant pseudotranslation is detected.*

¹Intensities estimated from amplitudes.

²Theoretical values of $\langle |L| \rangle$, $\langle L^2 \rangle$ for acentric reflections are 0.5, 0.333 respectively for untwinned datasets, and 0.375, 0.2 for perfectly twinned datasets.

5 Model quality [i](#)

5.1 Standard geometry [i](#)

Bond lengths and bond angles in the following residue types are not validated in this section: BMA, CA, MPD, NA, HEM, MRD, CL, NAG

The Z score for a bond length (or angle) is the number of standard deviations the observed value is removed from the expected value. A bond length (or angle) with $|Z| > 5$ is considered an outlier worth inspection. RMSZ is the root-mean-square of all Z scores of the bond lengths (or angles).

Mol	Chain	Bond lengths		Bond angles	
		RMSZ	# Z >5	RMSZ	# Z >5
1	A	0.14	0/4221	0.30	0/5718
1	B	0.12	0/4221	0.26	0/5718
All	All	0.13	0/8442	0.28	0/11436

There are no bond length outliers.

There are no bond angle outliers.

There are no chirality outliers.

There are no planarity outliers.

5.2 Too-close contacts [i](#)

In the following table, the Non-H and H(model) columns list the number of non-hydrogen atoms and hydrogen atoms in the chain respectively. The H(added) column lists the number of hydrogen atoms added and optimized by MolProbity. The Clashes column lists the number of clashes within the asymmetric unit, whereas Symm-Clashes lists symmetry-related clashes.

Mol	Chain	Non-H	H(model)	H(added)	Clashes	Symm-Clashes
1	A	4120	3970	3963	9	0
1	B	4120	3973	3968	10	0
2	A	42	42	39	0	0
2	B	14	14	13	0	0
3	A	43	29	30	3	0
3	B	43	29	30	3	0
4	A	1	0	0	0	0
4	B	1	0	0	0	0
5	A	11	11	10	0	0
6	A	8	14	14	1	0
6	B	8	14	14	3	0

Continued on next page...

Continued from previous page...

Mol	Chain	Non-H	H(model)	H(added)	Clashes	Symm-Clashes
7	A	1	0	0	0	0
8	A	1	0	0	0	0
8	B	1	0	0	0	0
9	B	8	14	14	2	0
10	A	102	0	0	1	0
10	B	62	0	0	1	0
All	All	8586	8110	8095	25	0

The all-atom clashscore is defined as the number of clashes found per 1000 atoms (including hydrogen atoms). The all-atom clashscore for this structure is 2.

All (25) close contacts within the same asymmetric unit are listed below, sorted by their clash magnitude.

Atom-1	Atom-2	Interatomic distance (Å)	Clash overlap (Å)
1:B:82:ILE:HD11	6:B:605:MPD:H13	1.77	0.65
3:B:602:HEM:HMB2	3:B:602:HEM:HBB2	1.78	0.63
3:A:604:HEM:HMB2	3:A:604:HEM:HBB2	1.83	0.60
1:A:59:GLY:O	1:A:138:ARG:NH1	2.38	0.56
9:B:604:MRD:O4	9:B:604:MRD:O2	2.22	0.53
1:A:80:THR:OG1	6:A:607:MPD:HM3	2.09	0.52
1:B:57:LYS:NZ	10:B:705:HOH:O	2.43	0.51
1:B:175:LEU:HD11	1:B:247:LEU:HB3	1.96	0.48
1:A:322:ARG:NH1	3:A:604:HEM:O1A	2.43	0.47
1:B:187:ARG:NH2	1:B:267:ASP:OD2	2.48	0.47
1:B:79:GLN:CG	6:B:605:MPD:H53	2.44	0.47
1:A:336:SER:OG	1:A:340:THR:OG1	2.22	0.46
1:A:315:GLU:OE1	1:A:315:GLU:N	2.45	0.46
1:A:22:GLN:OE1	1:A:23:GLU:N	2.47	0.46
1:B:382:SER:H	9:B:604:MRD:C1	2.30	0.45
1:B:79:GLN:HG2	6:B:605:MPD:H53	1.99	0.45
3:B:602:HEM:HBB2	3:B:602:HEM:CMB	2.47	0.45
3:A:604:HEM:HBB2	3:A:604:HEM:CMB	2.48	0.43
1:A:324:GLY:O	1:A:327:GLU:HG2	2.19	0.42
3:B:602:HEM:HBC2	3:B:602:HEM:HMC2	2.01	0.42
1:B:69:ARG:NH1	1:B:398:ASP:OD2	2.53	0.42
1:A:325:HIS:CD2	1:A:399:LEU:HD21	2.55	0.41
1:B:314:ASN:O	1:B:318:THR:HG22	2.20	0.41
1:B:362:GLU:OE1	1:B:362:GLU:N	2.51	0.41
1:A:212:VAL:O	10:A:701:HOH:O	2.22	0.41

There are no symmetry-related clashes.

5.3 Torsion angles [i](#)

5.3.1 Protein backbone [i](#)

In the following table, the Percentiles column shows the percent Ramachandran outliers of the chain as a percentile score with respect to all X-ray entries followed by that with respect to entries of similar resolution.

The Analysed column shows the number of residues for which the backbone conformation was analysed, and the total number of residues.

Mol	Chain	Analysed	Favoured	Allowed	Outliers	Percentiles	
1	A	509/511 (100%)	495 (97%)	14 (3%)	0	100	100
1	B	509/511 (100%)	486 (96%)	23 (4%)	0	100	100
All	All	1018/1022 (100%)	981 (96%)	37 (4%)	0	100	100

There are no Ramachandran outliers to report.

5.3.2 Protein sidechains [i](#)

In the following table, the Percentiles column shows the percent sidechain outliers of the chain as a percentile score with respect to all X-ray entries followed by that with respect to entries of similar resolution.

The Analysed column shows the number of residues for which the sidechain conformation was analysed, and the total number of residues.

Mol	Chain	Analysed	Rotameric	Outliers	Percentiles	
1	A	456/456 (100%)	456 (100%)	0	100	100
1	B	456/456 (100%)	455 (100%)	1 (0%)	87	95
All	All	912/912 (100%)	911 (100%)	1 (0%)	88	96

All (1) residues with a non-rotameric sidechain are listed below:

Mol	Chain	Res	Type
1	B	88	LEU

Sometimes sidechains can be flipped to improve hydrogen bonding and reduce clashes. All (6) such sidechains are listed below:

Mol	Chain	Res	Type
1	A	394	GLN
1	B	36	ASN

Continued on next page...

Continued from previous page...

Mol	Chain	Res	Type
1	B	51	ASN
1	B	225	GLN
1	B	262	HIS
1	B	502	ASN

5.3.3 RNA [i](#)

There are no RNA molecules in this entry.

5.4 Non-standard residues in protein, DNA, RNA chains [i](#)

There are no non-standard protein/DNA/RNA residues in this entry.

5.5 Carbohydrates [i](#)

There are no oligosaccharides in this entry.

5.6 Ligand geometry [i](#)

Of 15 ligands modelled in this entry, 5 are monoatomic - leaving 10 for Mogul analysis.

In the following table, the Counts columns list the number of bonds (or angles) for which Mogul statistics could be retrieved, the number of bonds (or angles) that are observed in the model and the number of bonds (or angles) that are defined in the Chemical Component Dictionary. The Link column lists molecule types, if any, to which the group is linked. The Z score for a bond length (or angle) is the number of standard deviations the observed value is removed from the expected value. A bond length (or angle) with $|Z| > 2$ is considered an outlier worth inspection. RMSZ is the root-mean-square of all Z scores of the bond lengths (or angles).

Mol	Type	Chain	Res	Link	Bond lengths			Bond angles		
					Counts	RMSZ	# $ Z > 2$	Counts	RMSZ	# $ Z > 2$
6	MPD	A	607	-	7,7,7	0.35	0	9,10,10	0.47	0
2	NAG	A	601	1	14,14,15	0.22	0	17,19,21	0.42	0
3	HEM	B	602	1	50,50,50	1.45	9 (18%)	67,82,82	1.22	8 (11%)
2	NAG	A	602	1	14,14,15	0.37	0	17,19,21	0.80	1 (5%)
2	NAG	A	603	1	14,14,15	0.60	0	17,19,21	0.59	0
9	MRD	B	604	-	7,7,7	0.72	0	9,10,10	0.46	0
5	BMA	A	606	1	11,11,12	1.05	0	15,15,17	0.95	1 (6%)
2	NAG	B	603	1	14,14,15	0.38	0	17,19,21	0.41	0
3	HEM	A	604	1	50,50,50	1.34	6 (12%)	67,82,82	1.21	8 (11%)

Mol	Type	Chain	Res	Link	Bond lengths			Bond angles		
					Counts	RMSZ	# Z > 2	Counts	RMSZ	# Z > 2
6	MPD	B	605	-	7,7,7	0.36	0	9,10,10	0.50	0

In the following table, the Chirals column lists the number of chiral outliers, the number of chiral centers analysed, the number of these observed in the model and the number defined in the Chemical Component Dictionary. Similar counts are reported in the Torsion and Rings columns. '-' means no outliers of that kind were identified.

Mol	Type	Chain	Res	Link	Chirals	Torsions	Rings
6	MPD	A	607	-	-	1/5/5/5	-
2	NAG	A	601	1	-	2/6/23/26	0/1/1/1
3	HEM	B	602	1	-	5/14/54/54	-
2	NAG	A	602	1	-	4/6/23/26	0/1/1/1
2	NAG	A	603	1	-	4/6/23/26	0/1/1/1
9	MRD	B	604	-	-	3/5/5/5	-
5	BMA	A	606	1	-	2/2/19/22	0/1/1/1
2	NAG	B	603	1	-	3/6/23/26	0/1/1/1
3	HEM	A	604	1	-	5/14/54/54	-
6	MPD	B	605	-	-	0/5/5/5	-

All (15) bond length outliers are listed below:

Mol	Chain	Res	Type	Atoms	Z	Observed(Å)	Ideal(Å)
3	B	602	HEM	FE-NA	3.57	2.06	1.95
3	B	602	HEM	FE-ND	3.53	2.05	1.94
3	B	602	HEM	FE-NC	3.52	2.06	1.95
3	A	604	HEM	FE-NB	3.37	2.05	1.94
3	B	602	HEM	CAC-C3C	3.09	1.55	1.47
3	A	604	HEM	CAC-C3C	3.09	1.55	1.47
3	B	602	HEM	CAB-C3B	3.06	1.55	1.47
3	A	604	HEM	FE-NC	2.97	2.05	1.95
3	B	602	HEM	FE-NB	2.95	2.04	1.94
3	A	604	HEM	FE-NA	2.90	2.04	1.95
3	A	604	HEM	CAB-C3B	2.86	1.55	1.47
3	B	602	HEM	CMB-C2B	2.07	1.55	1.50
3	A	604	HEM	CMA-C3A	2.02	1.54	1.50
3	B	602	HEM	CMD-C2D	2.01	1.54	1.50
3	B	602	HEM	CMA-C3A	2.01	1.54	1.50

All (18) bond angle outliers are listed below:

Mol	Chain	Res	Type	Atoms	Z	Observed(°)	Ideal(°)
3	B	602	HEM	C1B-NB-C4B	2.67	108.37	105.21
2	A	602	NAG	C1-O5-C5	2.64	115.73	112.19
3	B	602	HEM	CBD-CAD-C3D	-2.63	105.26	112.53
3	A	604	HEM	CBD-CAD-C3D	-2.60	105.36	112.53
3	B	602	HEM	C4D-ND-C1D	2.55	108.23	105.21
5	A	606	BMA	C1-O5-C5	2.46	115.49	112.19
3	B	602	HEM	C3B-C2B-C1B	2.36	108.18	106.41
3	A	604	HEM	C1B-NB-C4B	2.31	107.94	105.21
3	A	604	HEM	C4D-ND-C1D	2.30	107.93	105.21
3	B	602	HEM	C3D-C4D-ND	-2.26	107.69	110.17
3	A	604	HEM	C3B-C4B-NB	-2.17	107.91	109.47
3	A	604	HEM	C3B-C2B-C1B	2.17	108.04	106.41
3	B	602	HEM	C2A-C1A-NA	-2.14	107.78	110.15
3	A	604	HEM	C3D-C4D-ND	-2.09	107.87	110.17
3	A	604	HEM	CBA-CAA-C2A	-2.08	106.77	112.53
3	B	602	HEM	C3B-C4B-NB	-2.04	108.00	109.47
3	B	602	HEM	CBA-CAA-C2A	-2.01	106.96	112.53
3	A	604	HEM	CAC-C3C-C4C	-2.01	120.03	124.82

There are no chirality outliers.

All (29) torsion outliers are listed below:

Mol	Chain	Res	Type	Atoms
9	B	604	MRD	C2-C3-C4-O4
2	A	603	NAG	C4-C5-C6-O6
2	B	603	NAG	O5-C5-C6-O6
2	A	603	NAG	O5-C5-C6-O6
5	A	606	BMA	C4-C5-C6-O6
2	B	603	NAG	C4-C5-C6-O6
2	A	602	NAG	O5-C5-C6-O6
5	A	606	BMA	O5-C5-C6-O6
2	A	602	NAG	C8-C7-N2-C2
2	A	602	NAG	O7-C7-N2-C2
2	A	603	NAG	C8-C7-N2-C2
2	A	603	NAG	O7-C7-N2-C2
2	A	601	NAG	O5-C5-C6-O6
2	A	602	NAG	C4-C5-C6-O6
2	A	601	NAG	C4-C5-C6-O6
6	A	607	MPD	O2-C2-C3-C4
9	B	604	MRD	C2-C3-C4-C5
3	A	604	HEM	C3D-CAD-CBD-CGD
3	B	602	HEM	C3D-CAD-CBD-CGD
3	B	602	HEM	CAD-CBD-CGD-O2D

Continued on next page...

Continued from previous page...

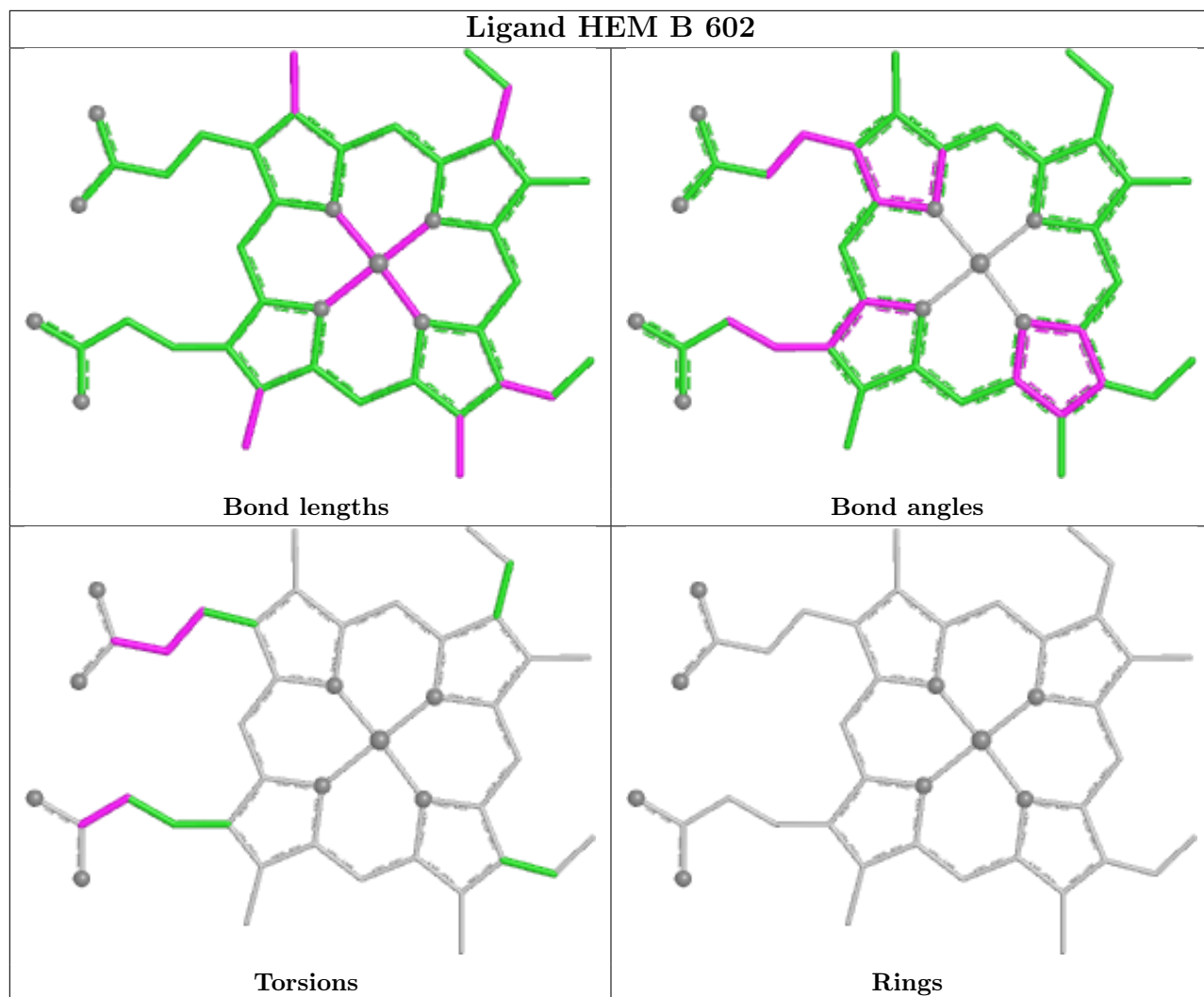
Mol	Chain	Res	Type	Atoms
3	B	602	HEM	CAA-CBA-CGA-O1A
3	B	602	HEM	CAD-CBD-CGD-O1D
2	B	603	NAG	C1-C2-N2-C7
3	A	604	HEM	CAD-CBD-CGD-O2D
3	A	604	HEM	CAA-CBA-CGA-O2A
3	A	604	HEM	CAD-CBD-CGD-O1D
3	B	602	HEM	CAA-CBA-CGA-O2A
3	A	604	HEM	CAA-CBA-CGA-O1A
9	B	604	MRD	O2-C2-C3-C4

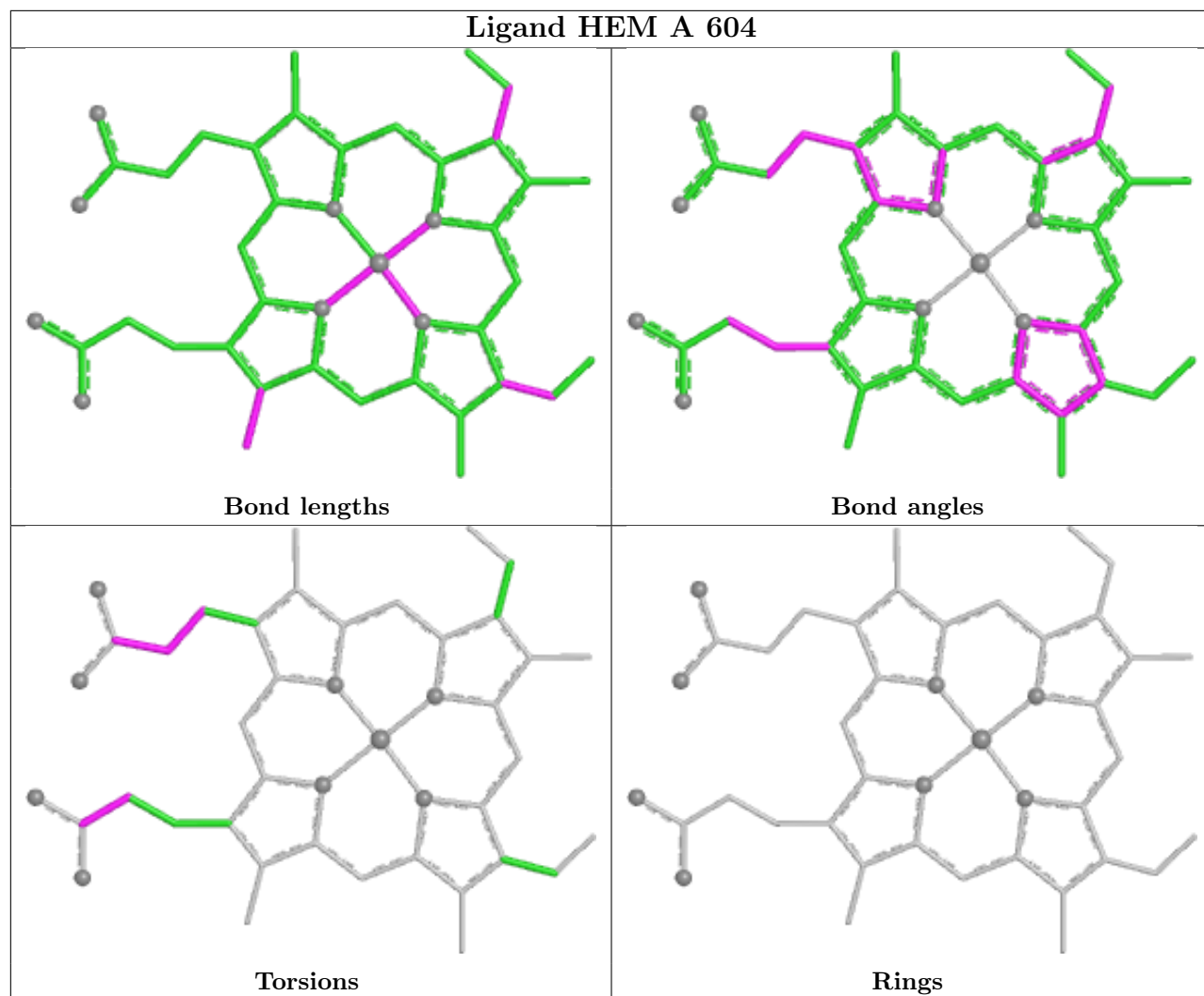
There are no ring outliers.

5 monomers are involved in 12 short contacts:

Mol	Chain	Res	Type	Clashes	Symm-Clashes
6	A	607	MPD	1	0
3	B	602	HEM	3	0
9	B	604	MRD	2	0
3	A	604	HEM	3	0
6	B	605	MPD	3	0

The following is a two-dimensional graphical depiction of Mogul quality analysis of bond lengths, bond angles, torsion angles, and ring geometry for all instances of the Ligand of Interest. In addition, ligands with molecular weight > 250 and outliers as shown on the validation Tables will also be included. For torsion angles, if less than 5% of the Mogul distribution of torsion angles is within 10 degrees of the torsion angle in question, then that torsion angle is considered an outlier. Any bond that is central to one or more torsion angles identified as an outlier by Mogul will be highlighted in the graph. For rings, the root-mean-square deviation (RMSD) between the ring in question and similar rings identified by Mogul is calculated over all ring torsion angles. If the average RMSD is greater than 60 degrees and the minimal RMSD between the ring in question and any Mogul-identified rings is also greater than 60 degrees, then that ring is considered an outlier. The outliers are highlighted in purple. The color gray indicates Mogul did not find sufficient equivalents in the CSD to analyse the geometry.





5.7 Other polymers [i](#)

There are no such residues in this entry.

5.8 Polymer linkage issues [i](#)

There are no chain breaks in this entry.

6 Fit of model and data [i](#)

6.1 Protein, DNA and RNA chains [i](#)

In the following table, the column labelled ‘#RSRZ> 2’ contains the number (and percentage) of RSRZ outliers, followed by percent RSRZ outliers for the chain as percentile scores relative to all X-ray entries and entries of similar resolution. The OWAB column contains the minimum, median, 95th percentile and maximum values of the occupancy-weighted average B-factor per residue. The column labelled ‘Q< 0.9’ lists the number of (and percentage) of residues with an average occupancy less than 0.9.

Mol	Chain	Analysed	<RSRZ>	#RSRZ>2	OWAB(Å ²)	Q<0.9
1	A	511/511 (100%)	0.07	4 (0%) 82 80	53, 64, 73, 85	0
1	B	511/511 (100%)	0.18	1 (0%) 91 89	62, 78, 93, 103	0
All	All	1022/1022 (100%)	0.12	5 (0%) 87 85	53, 70, 91, 103	0

All (5) RSRZ outliers are listed below:

Mol	Chain	Res	Type	RSRZ
1	A	351	TYR	2.9
1	B	170	ILE	2.3
1	A	223	ILE	2.2
1	A	226	LEU	2.2
1	A	397	LEU	2.1

6.2 Non-standard residues in protein, DNA, RNA chains [i](#)

There are no non-standard protein/DNA/RNA residues in this entry.

6.3 Carbohydrates [i](#)

There are no oligosaccharides in this entry.

6.4 Ligands [i](#)

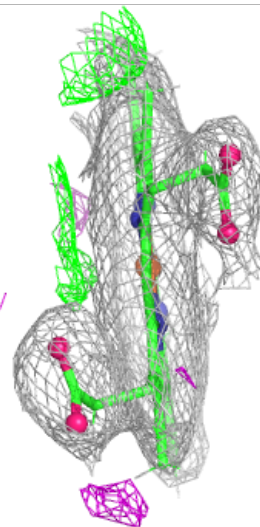
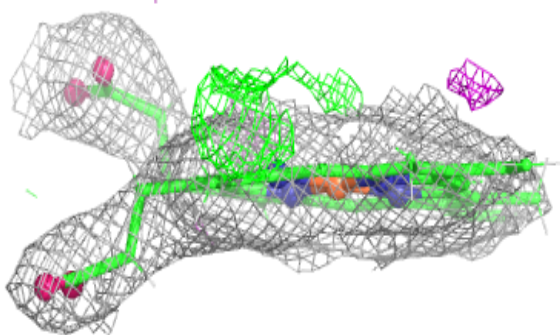
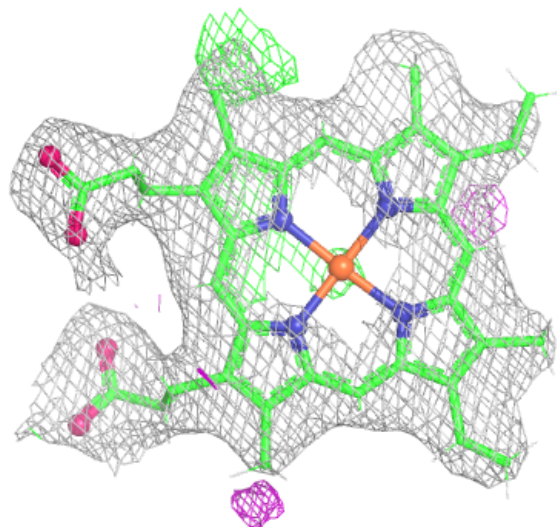
In the following table, the Atoms column lists the number of modelled atoms in the group and the number defined in the chemical component dictionary. The B-factors column lists the minimum, median, 95th percentile and maximum values of B factors of atoms in the group. The column labelled ‘Q< 0.9’ lists the number of atoms with occupancy less than 0.9.

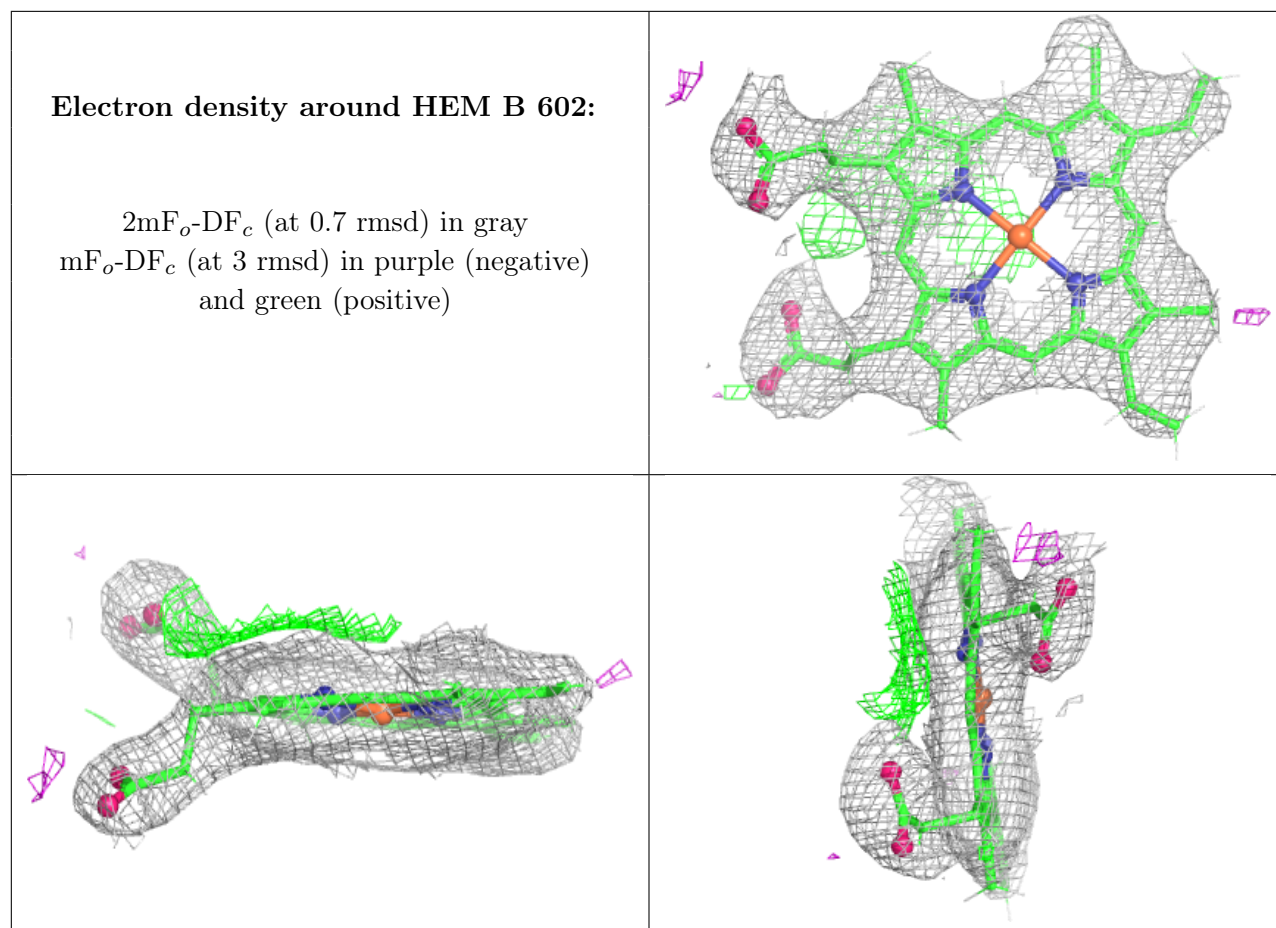
Mol	Type	Chain	Res	Atoms	RSCC	RSR	B-factors(\AA^2)	Q<0.9
9	MRD	B	604	8/8	0.64	0.20	74,89,92,93	0
5	BMA	A	606	11/12	0.66	0.17	42,50,58,60	22
2	NAG	A	602	14/15	0.67	0.14	41,53,64,64	28
6	MPD	B	605	8/8	0.69	0.19	70,84,90,90	0
2	NAG	A	601	14/15	0.71	0.14	53,62,74,75	0
2	NAG	B	603	14/15	0.73	0.12	50,62,73,73	0
2	NAG	A	603	14/15	0.81	0.11	40,49,56,58	28
6	MPD	A	607	8/8	0.85	0.18	66,81,85,85	0
7	CL	A	608	1/1	0.87	0.11	81,81,81,81	0
8	NA	B	606	1/1	0.92	0.07	68,68,68,68	0
8	NA	A	609	1/1	0.92	0.07	57,57,57,57	0
3	HEM	A	604	43/43	0.95	0.09	43,54,64,65	0
3	HEM	B	602	43/43	0.97	0.07	42,53,66,69	0
4	CA	B	601	1/1	0.99	0.03	51,51,51,51	0
4	CA	A	605	1/1	0.99	0.04	47,47,47,47	0

The following is a graphical depiction of the model fit to experimental electron density of all instances of the Ligand of Interest. In addition, ligands with molecular weight > 250 and outliers as shown on the geometry validation Tables will also be included. Each fit is shown from different orientation to approximate a three-dimensional view.

Electron density around HEM A 604:

$2mF_o-DF_c$ (at 0.7 rmsd) in gray
 mF_o-DF_c (at 3 rmsd) in purple (negative)
and green (positive)





6.5 Other polymers [i](#)

There are no such residues in this entry.