



Full wwPDB X-ray Structure Validation Report ⓘ

Mar 5, 2026 – 03:20 PM UTC

PDB ID : 4EUX / pdb_00004eux
Title : Structure of neuronal nitric oxide synthase heme domain in complex with 6-(5-(((3R,4R)-4-((6-amino-4-methylpyridin-2-yl)methyl)pyrrolidin-3-yl)oxy)pentyl)-4-methylpyridin-2-amine
Authors : Li, H.; Poulos, T.L.
Deposited on : 2012-04-25
Resolution : 2.14 Å(reported)

This is a Full wwPDB X-ray Structure Validation Report for a publicly released PDB entry.

We welcome your comments at validation@mail.wwpdb.org

A user guide is available at

<https://www.wwpdb.org/validation/2017/XrayValidationReportHelp>

with specific help available everywhere you see the ⓘ symbol.

The types of validation reports are described at

<http://www.wwpdb.org/validation/2017/FAQs#types>.

The following versions of software and data (see [references ⓘ](#)) were used in the production of this report:

MolProbity : 4-5-2 with Phenix2.0
Mogul : 2022.3.0, CSD as543be (2022)
Xtriage (Phenix) : 2.0
EDS : 3.0
Buster-report : wwPDB partial adaption of 1.1.7 (2018)
Percentile statistics : 20250101.v01 (using entries in the PDB archive January 1st 2025)
CCP4 : 9.0.010 (Gargrove)
Density-Fitness : 1.0.12
Ideal geometry (proteins) : Engh & Huber (2001)
Ideal geometry (DNA, RNA) : Parkinson et al. (1996)
Validation Pipeline (wwPDB-VP) : 2.49

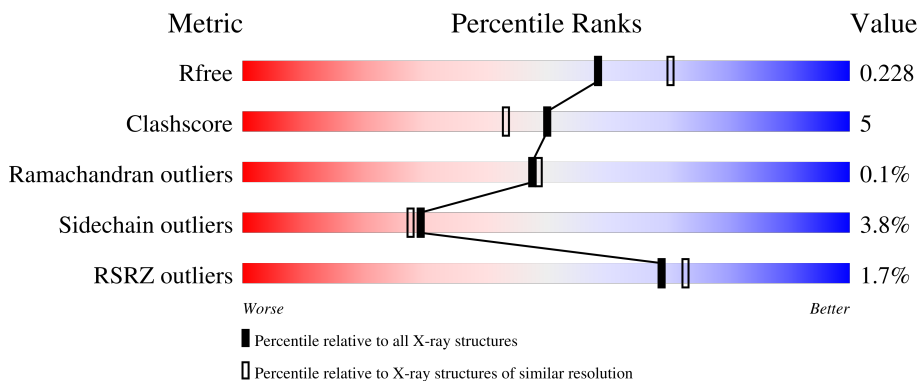
1 Overall quality at a glance

The following experimental techniques were used to determine the structure:

X-RAY DIFFRACTION

The reported resolution of this entry is 2.14 Å.

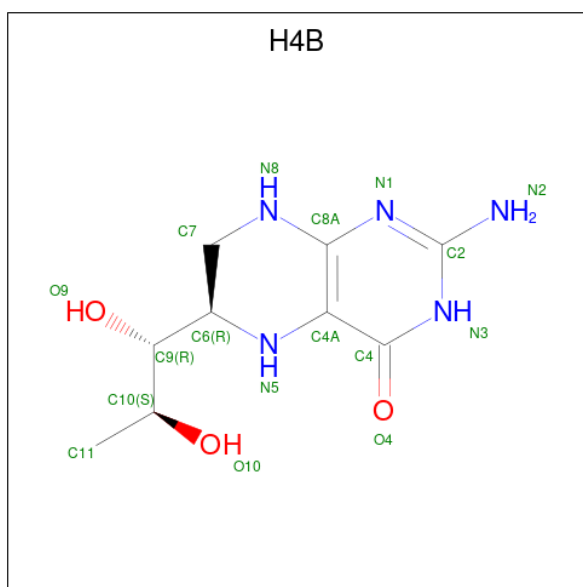
Percentile scores (ranging between 0-100) for global validation metrics of the entry are shown in the following graphic. The table shows the number of entries on which the scores are based.



Metric	Whole archive (#Entries)	Similar resolution (#Entries, resolution range(Å))
R_{free}	180053	3689 (2.16-2.12)
Clashscore	190562	3812 (2.16-2.12)
Ramachandran outliers	187476	3773 (2.16-2.12)
Sidechain outliers	187428	3772 (2.16-2.12)
RSRZ outliers	180081	3691 (2.16-2.12)

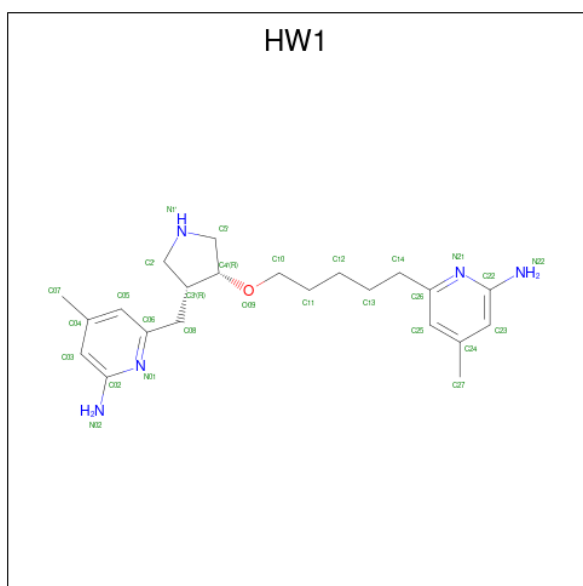
The table below summarises the geometric issues observed across the polymeric chains and their fit to the electron density. The red, orange, yellow and green segments of the lower bar indicate the fraction of residues that contain outliers for ≥ 3 , 2, 1 and 0 types of geometric quality criteria respectively. A grey segment represents the fraction of residues that are not modelled. The numeric value for each fraction is indicated below the corresponding segment, with a dot representing fractions $\leq 5\%$. The upper red bar (where present) indicates the fraction of residues that have poor fit to the electron density. The numeric value is given above the bar.

Mol	Chain	Length	Quality of chain
1	A	422	 2% 81% 14%
1	B	422	 0% 84% 11%



Mol	Chain	Residues	Atoms				ZeroOcc	AltConf
			Total	C	N	O		
3	A	1	17	9	5	3	0	0
3	B	1	17	9	5	3	0	0

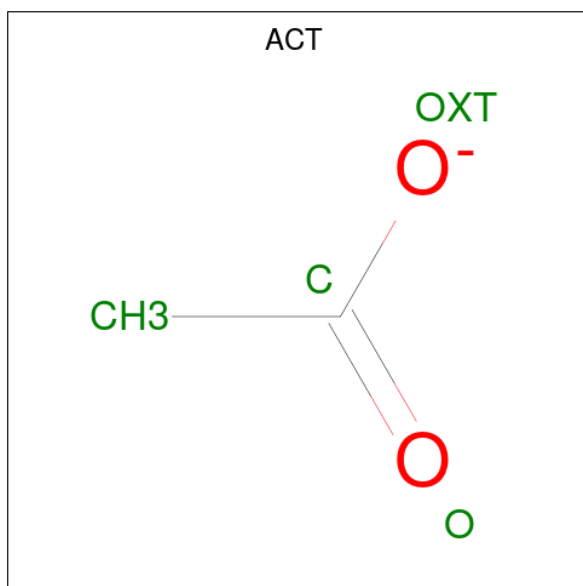
- Molecule 4 is 6-[5-((3R,4R)-4-[(6-amino-4-methylpyridin-2-yl)methyl]pyrrolidin-3-yl)oxy)pentyl]-4-methylpyridin-2-amine (CCD ID: HW1) (formula: C₂₂H₃₃N₅O).



Continued from previous page...

Mol	Chain	Residues	Atoms				ZeroOcc	AltConf
			Total	C	N	O		
4	B	1	28	22	5	1	0	0

- Molecule 5 is ACETATE ION (CCD ID: ACT) (formula: $C_2H_3O_2$).



Mol	Chain	Residues	Atoms			ZeroOcc	AltConf
			Total	C	O		
5	A	1	4	2	2	0	0
5	B	1	4	2	2	0	0

- Molecule 6 is ZINC ION (CCD ID: ZN) (formula: Zn).

Mol	Chain	Residues	Atoms		ZeroOcc	AltConf
			Total	Zn		
6	A	1	1	1	0	0

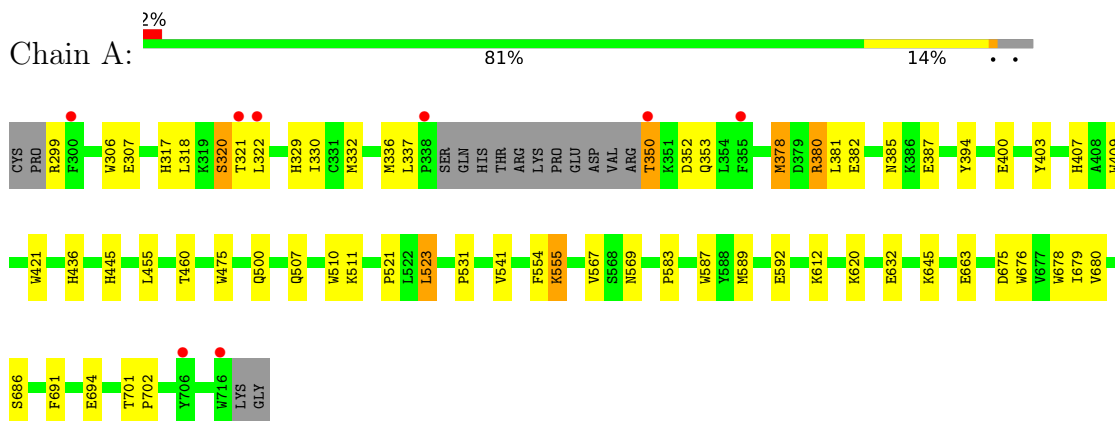
- Molecule 7 is water.

Mol	Chain	Residues	Atoms		ZeroOcc	AltConf
			Total	O		
7	A	115	115	115	0	0
7	B	153	153	153	0	0

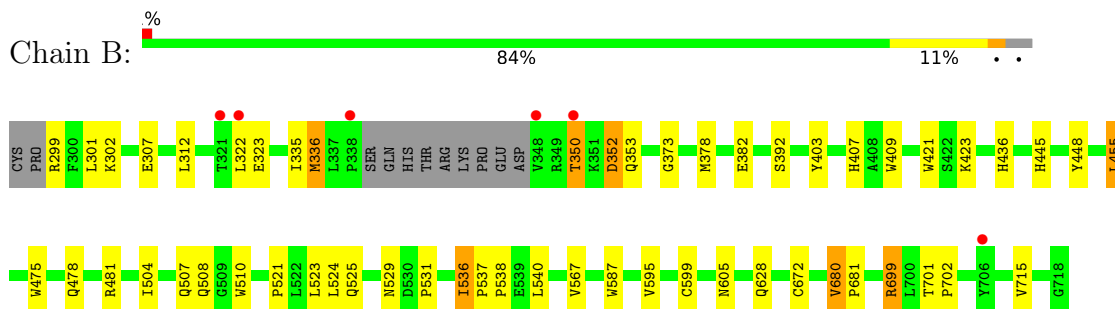
3 Residue-property plots [i](#)

These plots are drawn for all protein, RNA, DNA and oligosaccharide chains in the entry. The first graphic for a chain summarises the proportions of the various outlier classes displayed in the second graphic. The second graphic shows the sequence view annotated by issues in geometry and electron density. Residues are color-coded according to the number of geometric quality criteria for which they contain at least one outlier: green = 0, yellow = 1, orange = 2 and red = 3 or more. A red dot above a residue indicates a poor fit to the electron density ($RSRZ > 2$). Stretches of 2 or more consecutive residues without any outlier are shown as a green connector. Residues present in the sample, but not in the model, are shown in grey.

- Molecule 1: Nitric oxide synthase, brain



- Molecule 1: Nitric oxide synthase, brain



4 Data and refinement statistics

Property	Value	Source
Space group	P 21 21 21	Depositor
Cell constants a, b, c, α , β , γ	52.04Å 111.19Å 164.31Å 90.00° 90.00° 90.00°	Depositor
Resolution (Å)	50.00 – 2.14 50.00 – 2.14	Depositor EDS
% Data completeness (in resolution range)	99.0 (50.00-2.14) 99.0 (50.00-2.14)	Depositor EDS
R_{merge}	0.10	Depositor
R_{sym}	0.10	Depositor
$\langle I/\sigma(I) \rangle$ ¹	2.40 (at 2.14Å)	Xtrriage
Refinement program	REFMAC	Depositor
R, R_{free}	0.180 , 0.228 0.180 , 0.228	Depositor DCC
R_{free} test set	2662 reflections (4.99%)	wwPDB-VP
Wilson B-factor (Å ²)	40.3	Xtrriage
Anisotropy	0.193	Xtrriage
Bulk solvent k_{sol} (e/Å ³), B_{sol} (Å ²)	0.35 , 40.0	EDS
L-test for twinning ²	$\langle L \rangle = 0.49$, $\langle L^2 \rangle = 0.32$	Xtrriage
Estimated twinning fraction	No twinning to report.	Xtrriage
F_o, F_c correlation	0.97	EDS
Total number of atoms	7123	wwPDB-VP
Average B, all atoms (Å ²)	51.0	wwPDB-VP

Xtrriage's analysis on translational NCS is as follows: *The largest off-origin peak in the Patterson function is 4.35% of the height of the origin peak. No significant pseudotranslation is detected.*

¹Intensities estimated from amplitudes.

²Theoretical values of $\langle |L| \rangle$, $\langle L^2 \rangle$ for acentric reflections are 0.5, 0.333 respectively for untwinned datasets, and 0.375, 0.2 for perfectly twinned datasets.

5 Model quality [i](#)

5.1 Standard geometry [i](#)

Bond lengths and bond angles in the following residue types are not validated in this section: ZN, HW1, ACT, H4B, HEM

The Z score for a bond length (or angle) is the number of standard deviations the observed value is removed from the expected value. A bond length (or angle) with $|Z| > 5$ is considered an outlier worth inspection. RMSZ is the root-mean-square of all Z scores of the bond lengths (or angles).

Mol	Chain	Bond lengths		Bond angles	
		RMSZ	# $ Z > 5$	RMSZ	# $ Z > 5$
1	A	0.86	0/3412	0.93	2/4629 (0.0%)
1	B	0.93	1/3456 (0.0%)	0.93	6/4685 (0.1%)
All	All	0.90	1/6868 (0.0%)	0.93	8/9314 (0.1%)

All (1) bond length outliers are listed below:

Mol	Chain	Res	Type	Atoms	Z	Observed(Å)	Ideal(Å)
1	B	436	HIS	CG-CD2	5.09	1.41	1.35

All (8) bond angle outliers are listed below:

Mol	Chain	Res	Type	Atoms	Z	Observed(°)	Ideal(°)
1	A	541	VAL	CB-CA-C	-5.82	106.05	112.68
1	B	680	VAL	CA-C-N	5.74	123.85	119.66
1	B	680	VAL	C-N-CA	5.74	123.85	119.66
1	B	672	CYS	CA-C-N	-5.67	114.09	119.76
1	B	672	CYS	C-N-CA	-5.67	114.09	119.76
1	A	589	MET	N-CA-C	-5.19	101.25	109.96
1	B	536	ILE	CA-C-N	-5.15	115.08	120.38
1	B	536	ILE	C-N-CA	-5.15	115.08	120.38

There are no chirality outliers.

There are no planarity outliers.

5.2 Too-close contacts [i](#)

In the following table, the Non-H and H(model) columns list the number of non-hydrogen atoms and hydrogen atoms in the chain respectively. The H(added) column lists the number of hydrogen atoms added and optimized by MolProbity. The Clashes column lists the number of clashes within

the asymmetric unit, whereas Symm-Clashes lists symmetry-related clashes.

Mol	Chain	Non-H	H(model)	H(added)	Clashes	Symm-Clashes
1	A	3316	0	3226	38	0
1	B	3354	0	3274	30	0
2	A	43	0	30	4	0
2	B	43	0	30	1	0
3	A	17	0	15	0	0
3	B	17	0	15	0	0
4	A	28	0	33	4	0
4	B	28	0	33	5	0
5	A	4	0	3	0	0
5	B	4	0	3	0	0
6	A	1	0	0	0	0
7	A	115	0	0	3	0
7	B	153	0	0	5	0
All	All	7123	0	6662	71	0

The all-atom clashscore is defined as the number of clashes found per 1000 atoms (including hydrogen atoms). The all-atom clashscore for this structure is 5.

All (71) close contacts within the same asymmetric unit are listed below, sorted by their clash magnitude.

Atom-1	Atom-2	Interatomic distance (Å)	Clash overlap (Å)
1:A:350:THR:N	1:A:353:GLN:HE21	1.81	0.78
2:A:801:HEM:HMC2	2:A:801:HEM:HBC2	1.67	0.77
1:A:307:GLU:HG3	7:B:1050:HOH:O	1.91	0.71
1:A:523:LEU:HD22	1:A:531:PRO:HB2	1.77	0.66
1:A:350:THR:N	1:A:353:GLN:NE2	2.46	0.64
1:B:605:ASN:ND2	7:B:1003:HOH:O	2.32	0.59
1:A:317:HIS:O	1:A:320:SER:HB3	2.03	0.59
1:B:350:THR:HB	1:B:352:ASP:HB2	1.83	0.59
1:A:475:TRP:HB2	1:A:523:LEU:HB3	1.85	0.57
1:B:409:TRP:CE3	1:B:421:TRP:HA	2.39	0.57
1:A:299:ARG:HG3	1:A:318:LEU:HD21	1.87	0.56
1:A:378:MET:HA	1:A:378:MET:CE	2.36	0.56
2:B:801:HEM:O2A	4:B:804:HW1:H22	2.05	0.56
4:B:804:HW1:H16	7:B:901:HOH:O	2.06	0.56
1:B:478:GLN:HB2	1:B:481:ARG:HG3	1.89	0.55
1:A:336:MET:HE3	1:A:678:TRP:HZ2	1.72	0.54
1:A:436:HIS:ND1	7:A:987:HOH:O	2.34	0.53
1:B:536:ILE:HG13	7:B:941:HOH:O	2.09	0.52
1:B:350:THR:HB	1:B:352:ASP:CB	2.39	0.52

Continued on next page...

Continued from previous page...

Atom-1	Atom-2	Interatomic distance (Å)	Clash overlap (Å)
1:A:675:ASP:O	1:A:679:ILE:HG12	2.10	0.51
1:A:455:LEU:HD12	1:A:587:TRP:HB3	1.92	0.50
7:A:1012:HOH:O	1:B:307:GLU:HG3	2.11	0.50
4:B:804:HW1:C5'	7:B:901:HOH:O	2.59	0.49
1:B:403:TYR:CE1	1:B:407:HIS:CE1	3.00	0.49
1:B:475:TRP:HB2	1:B:523:LEU:HB3	1.94	0.49
1:A:567:VAL:HG23	4:A:803:HW1:H31	1.94	0.48
1:A:455:LEU:HD12	1:A:587:TRP:CB	2.43	0.48
1:B:524:LEU:O	1:B:531:PRO:HA	2.12	0.48
1:B:455:LEU:HD23	1:B:587:TRP:HB3	1.96	0.48
1:A:686:SER:HA	1:A:691:PHE:CG	2.49	0.47
1:B:595:VAL:O	1:B:599:CYS:HB2	2.15	0.47
1:B:322:LEU:HD12	1:B:699:ARG:HB3	1.97	0.47
1:A:332:MET:HE1	1:B:301:LEU:HD22	1.96	0.47
1:A:632:GLU:OE2	1:B:628:GLN:NE2	2.48	0.47
1:A:329:HIS:C	1:A:330:ILE:HG13	2.40	0.46
2:A:801:HEM:CBA	4:A:803:HW1:H24	2.45	0.46
1:A:378:MET:HA	1:A:378:MET:HE2	1.97	0.46
1:A:380:ARG:HD3	1:A:400:GLU:OE1	2.15	0.46
1:A:299:ARG:O	1:A:317:HIS:CE1	2.69	0.46
1:A:378:MET:CE	1:A:381:LEU:HD23	2.46	0.46
1:B:701:THR:HA	1:B:702:PRO:C	2.41	0.46
1:B:445:HIS:C	1:B:445:HIS:CD2	2.95	0.45
1:A:694:GLU:HB3	1:B:335:ILE:HD13	1.98	0.45
1:A:555:LYS:NZ	1:A:555:LYS:HB3	2.31	0.45
1:B:567:VAL:CG2	4:B:804:HW1:H25	2.47	0.45
1:B:680:VAL:HA	1:B:681:PRO:HD3	1.87	0.45
2:A:801:HEM:HBA1	4:A:803:HW1:H24	2.00	0.44
1:A:409:TRP:CE3	1:A:421:TRP:HA	2.53	0.44
1:A:378:MET:HE1	1:A:381:LEU:HD23	2.00	0.43
1:A:306:TRP:CD2	1:B:336:MET:HE3	2.54	0.43
1:B:510:TRP:CE2	1:B:521:PRO:HD3	2.54	0.43
1:A:445:HIS:CD2	1:A:445:HIS:C	2.97	0.43
1:A:460:THR:O	1:A:583:PRO:HD2	2.19	0.43
1:B:448:TYR:CD2	1:B:448:TYR:C	2.97	0.43
1:B:504:ILE:O	1:B:508:GLN:HG2	2.19	0.42
1:B:567:VAL:HG23	4:B:804:HW1:H31	2.01	0.42
1:B:299:ARG:HB3	1:B:299:ARG:NH1	2.34	0.42
1:A:387:GLU:OE1	1:A:394:TYR:HA	2.19	0.42
1:A:403:TYR:CE1	1:A:407:HIS:CE1	3.07	0.42
1:A:554:PHE:HB3	7:A:1009:HOH:O	2.20	0.41

Continued on next page...

Continued from previous page...

Atom-1	Atom-2	Interatomic distance (Å)	Clash overlap (Å)
2:A:801:HEM:HBC2	2:A:801:HEM:CMC	2.42	0.41
1:B:537:PRO:HA	1:B:538:PRO:HD3	1.95	0.41
1:A:382:GLU:O	1:A:385:ASN:HB3	2.20	0.41
1:B:373:GLY:HA2	1:B:378:MET:HE3	2.03	0.41
1:A:321:THR:HG23	1:A:322:LEU:HG	2.04	0.40
1:A:510:TRP:CE2	1:A:521:PRO:HD3	2.57	0.40
1:A:701:THR:HA	1:A:702:PRO:C	2.47	0.40
1:B:302:LYS:HA	1:B:312:LEU:O	2.21	0.40
1:A:676:TRP:CE2	1:A:680:VAL:HG21	2.56	0.40
1:A:592:GLU:OE1	4:A:803:HW1:N21	2.54	0.40
1:B:525:GLN:HG3	1:B:529:ASN:O	2.22	0.40

There are no symmetry-related clashes.

5.3 Torsion angles [i](#)

5.3.1 Protein backbone [i](#)

In the following table, the Percentiles column shows the percent Ramachandran outliers of the chain as a percentile score with respect to all X-ray entries followed by that with respect to entries of similar resolution.

The Analysed column shows the number of residues for which the backbone conformation was analysed, and the total number of residues.

Mol	Chain	Analysed	Favoured	Allowed	Outliers	Percentiles	
1	A	404/422 (96%)	393 (97%)	11 (3%)	0	100	100
1	B	410/422 (97%)	401 (98%)	8 (2%)	1 (0%)	43	42
All	All	814/844 (96%)	794 (98%)	19 (2%)	1 (0%)	48	49

All (1) Ramachandran outliers are listed below:

Mol	Chain	Res	Type
1	B	352	ASP

5.3.2 Protein sidechains [i](#)

In the following table, the Percentiles column shows the percent sidechain outliers of the chain as a percentile score with respect to all X-ray entries followed by that with respect to entries of similar resolution.

The Analysed column shows the number of residues for which the sidechain conformation was analysed, and the total number of residues.

Mol	Chain	Analysed	Rotameric	Outliers	Percentiles	
1	A	364/377 (97%)	348 (96%)	16 (4%)	25	22
1	B	369/377 (98%)	357 (97%)	12 (3%)	33	33
All	All	733/754 (97%)	705 (96%)	28 (4%)	29	28

All (28) residues with a non-rotameric sidechain are listed below:

Mol	Chain	Res	Type
1	A	320	SER
1	A	337	LEU
1	A	350	THR
1	A	352	ASP
1	A	378	MET
1	A	380	ARG
1	A	500	GLN
1	A	507	GLN
1	A	511	LYS
1	A	523	LEU
1	A	555	LYS
1	A	569	ASN
1	A	612	LYS
1	A	620	LYS
1	A	645	LYS
1	A	663	GLU
1	B	323	GLU
1	B	336	MET
1	B	350	THR
1	B	353	GLN
1	B	382	GLU
1	B	392	SER
1	B	423	LYS
1	B	455	LEU
1	B	507	GLN
1	B	540	LEU
1	B	699	ARG
1	B	715	VAL

Sometimes sidechains can be flipped to improve hydrogen bonding and reduce clashes. All (19) such sidechains are listed below:

Mol	Chain	Res	Type
1	A	385	ASN
1	A	436	HIS
1	A	454	ASN
1	A	487	GLN
1	A	527	ASN
1	A	569	ASN
1	A	601	ASN
1	A	697	ASN
1	B	353	GLN
1	B	364	GLN
1	B	385	ASN
1	B	407	HIS
1	B	425	GLN
1	B	454	ASN
1	B	535	GLN
1	B	605	ASN
1	B	642	GLN
1	B	697	ASN
1	B	707	GLN

5.3.3 RNA [i](#)

There are no RNA molecules in this entry.

5.4 Non-standard residues in protein, DNA, RNA chains [i](#)

There are no non-standard protein/DNA/RNA residues in this entry.

5.5 Carbohydrates [i](#)

There are no oligosaccharides in this entry.

5.6 Ligand geometry [i](#)

Of 9 ligands modelled in this entry, 1 is monoatomic - leaving 8 for Mogul analysis.

In the following table, the Counts columns list the number of bonds (or angles) for which Mogul statistics could be retrieved, the number of bonds (or angles) that are observed in the model and the number of bonds (or angles) that are defined in the Chemical Component Dictionary. The Link column lists molecule types, if any, to which the group is linked. The Z score for a bond length (or angle) is the number of standard deviations the observed value is removed from the

expected value. A bond length (or angle) with $|Z| > 2$ is considered an outlier worth inspection. RMSZ is the root-mean-square of all Z scores of the bond lengths (or angles).

Mol	Type	Chain	Res	Link	Bond lengths			Bond angles		
					Counts	RMSZ	$\# Z > 2$	Counts	RMSZ	$\# Z > 2$
2	HEM	A	801	1	50,50,50	2.51	24 (48%)	67,82,82	3.01	23 (34%)
3	H4B	B	802	-	17,18,18	0.88	0	14,26,26	1.94	5 (35%)
4	HW1	B	804	-	29,30,30	0.76	1 (3%)	31,40,40	2.31	6 (19%)
2	HEM	B	801	1	50,50,50	2.48	23 (46%)	67,82,82	2.94	25 (37%)
3	H4B	A	802	-	17,18,18	1.09	1 (5%)	14,26,26	2.07	6 (42%)
4	HW1	A	803	-	29,30,30	0.90	1 (3%)	31,40,40	1.84	5 (16%)
5	ACT	A	804	-	3,3,3	0.78	0	3,3,3	0.89	0
5	ACT	B	803	-	3,3,3	0.99	0	3,3,3	0.15	0

In the following table, the Chirals column lists the number of chiral outliers, the number of chiral centers analysed, the number of these observed in the model and the number defined in the Chemical Component Dictionary. Similar counts are reported in the Torsion and Rings columns. '-' means no outliers of that kind were identified.

Mol	Type	Chain	Res	Link	Chirals	Torsions	Rings
2	HEM	A	801	1	-	1/14/54/54	-
3	H4B	B	802	-	-	0/8/17/17	0/2/2/2
4	HW1	B	804	-	-	3/13/23/23	0/3/3/3
2	HEM	B	801	1	-	0/14/54/54	-
3	H4B	A	802	-	-	0/8/17/17	0/2/2/2
4	HW1	A	803	-	-	6/13/23/23	0/3/3/3

All (50) bond length outliers are listed below:

Mol	Chain	Res	Type	Atoms	Z	Observed(Å)	Ideal(Å)
2	A	801	HEM	FE-NB	5.94	2.13	1.94
2	A	801	HEM	C3C-C2C	5.42	1.48	1.37
2	B	801	HEM	FE-ND	5.23	2.11	1.94
2	B	801	HEM	FE-NB	5.03	2.10	1.94
2	B	801	HEM	C3C-C2C	4.91	1.47	1.37
2	A	801	HEM	FE-ND	4.81	2.09	1.94
2	A	801	HEM	C3D-C2D	4.81	1.47	1.36
2	B	801	HEM	C3B-C2B	4.74	1.46	1.37
2	B	801	HEM	C3D-C2D	4.60	1.46	1.36
2	A	801	HEM	CHD-C4C	4.38	1.47	1.38
2	A	801	HEM	CHA-C4D	4.31	1.47	1.38
2	B	801	HEM	C4A-NA	4.24	1.47	1.39
2	A	801	HEM	CHC-C1C	4.03	1.46	1.38

Continued on next page...

Continued from previous page...

Mol	Chain	Res	Type	Atoms	Z	Observed(Å)	Ideal(Å)
2	B	801	HEM	CHD-C4C	4.01	1.46	1.38
2	B	801	HEM	CHC-C1C	3.89	1.46	1.38
2	B	801	HEM	CHA-C4D	3.64	1.45	1.38
2	A	801	HEM	C4D-ND	-3.59	1.34	1.40
2	A	801	HEM	CHC-C4B	3.34	1.46	1.39
2	B	801	HEM	CHB-C4A	3.29	1.46	1.39
2	B	801	HEM	CHC-C4B	3.24	1.46	1.39
2	A	801	HEM	C4A-NA	3.24	1.45	1.39
2	B	801	HEM	C2A-C3A	3.04	1.46	1.38
2	A	801	HEM	C3B-C2B	2.97	1.43	1.37
2	A	801	HEM	CHB-C4A	2.86	1.45	1.39
2	B	801	HEM	CHA-C1A	2.82	1.45	1.39
2	A	801	HEM	C1A-NA	2.80	1.44	1.39
2	A	801	HEM	CHD-C1D	2.74	1.45	1.39
2	B	801	HEM	C4D-ND	-2.73	1.35	1.40
2	A	801	HEM	C4A-C3A	2.67	1.49	1.43
2	A	801	HEM	C2A-C3A	2.65	1.45	1.38
2	B	801	HEM	C4A-C3A	2.62	1.49	1.43
4	A	803	HW1	C08-C3'	-2.59	1.50	1.53
2	B	801	HEM	C1C-NC	2.55	1.44	1.39
2	B	801	HEM	C3B-C4B	2.53	1.49	1.44
2	A	801	HEM	C1C-C2C	2.52	1.50	1.45
2	B	801	HEM	CHB-C1B	2.51	1.43	1.38
2	A	801	HEM	C1B-NB	-2.50	1.35	1.40
2	A	801	HEM	C1C-NC	2.48	1.44	1.39
3	A	802	H4B	C8A-N1	-2.38	1.32	1.36
2	B	801	HEM	CHD-C1D	2.30	1.44	1.39
2	A	801	HEM	CHA-C1A	2.27	1.44	1.39
2	A	801	HEM	C3B-C4B	2.22	1.49	1.44
2	A	801	HEM	CHB-C1B	2.17	1.42	1.38
4	B	804	HW1	C14-C26	2.17	1.55	1.51
2	B	801	HEM	C1D-ND	-2.16	1.34	1.38
2	A	801	HEM	C1B-C2B	2.15	1.48	1.44
2	B	801	HEM	C1A-NA	2.15	1.43	1.39
2	B	801	HEM	C4C-NC	2.15	1.43	1.39
2	B	801	HEM	O2A-CGA	-2.14	1.23	1.30
2	A	801	HEM	C4C-NC	2.07	1.43	1.39

All (70) bond angle outliers are listed below:

Mol	Chain	Res	Type	Atoms	Z	Observed(°)	Ideal(°)
2	A	801	HEM	C3B-C2B-C1B	-10.00	98.90	106.41

Continued on next page...

Continued from previous page...

Mol	Chain	Res	Type	Atoms	Z	Observed(°)	Ideal(°)
2	B	801	HEM	C3B-C2B-C1B	-9.34	99.40	106.41
2	A	801	HEM	C2B-C1B-NB	8.78	119.93	109.84
2	B	801	HEM	C2B-C1B-NB	8.35	119.44	109.84
2	A	801	HEM	C3B-C4B-NB	7.75	115.04	109.47
2	B	801	HEM	C2D-C1D-ND	7.74	118.84	109.90
2	A	801	HEM	C2D-C1D-ND	7.61	118.70	109.90
4	B	804	HW1	C22-N21-C26	7.28	123.52	118.07
2	B	801	HEM	C3B-C4B-NB	6.84	114.38	109.47
2	A	801	HEM	C1D-C2D-C3D	-6.65	99.98	106.98
4	B	804	HW1	C02-N01-C06	6.29	122.77	118.07
2	B	801	HEM	C3D-C4D-ND	6.14	116.90	110.17
2	B	801	HEM	CBA-CAA-C2A	-5.63	96.96	112.53
2	B	801	HEM	C1D-C2D-C3D	-5.60	101.09	106.98
4	A	803	HW1	C02-N01-C06	5.56	122.23	118.07
2	A	801	HEM	C3D-C4D-ND	5.21	115.88	110.17
4	B	804	HW1	C25-C26-N21	-5.09	116.94	122.73
2	A	801	HEM	CMB-C2B-C1B	4.84	132.59	125.03
3	A	802	H4B	C2-N1-C8A	4.81	121.84	113.36
4	A	803	HW1	C22-N21-C26	4.75	121.62	118.07
2	A	801	HEM	C1B-NB-C4B	-4.39	100.00	105.21
2	A	801	HEM	C3C-C2C-C1C	-4.20	103.07	107.05
2	A	801	HEM	C2A-C1A-NA	4.20	114.81	110.15
2	A	801	HEM	CBA-CAA-C2A	-4.08	101.24	112.53
2	B	801	HEM	C4D-ND-C1D	-4.00	100.47	105.21
3	B	802	H4B	C2-N1-C8A	3.93	120.29	113.36
2	B	801	HEM	C4A-C3A-C2A	-3.90	102.35	106.82
2	B	801	HEM	CHD-C1D-C2D	-3.74	119.12	125.03
2	B	801	HEM	CMB-C2B-C1B	3.60	130.66	125.03
2	B	801	HEM	C1B-NB-C4B	-3.56	100.99	105.21
4	A	803	HW1	C5'-N1'-C2'	3.47	114.06	105.45
4	B	804	HW1	C5'-N1'-C2'	3.36	113.81	105.45
3	B	802	H4B	C2-N3-C4	-3.34	119.05	125.11
2	B	801	HEM	C3C-C2C-C1C	-3.33	103.90	107.05
2	B	801	HEM	CMA-C3A-C4A	3.32	130.47	125.42
2	A	801	HEM	C4D-ND-C1D	-3.26	101.34	105.21
2	A	801	HEM	C4A-NA-C1A	-3.23	100.55	105.82
2	B	801	HEM	CMD-C2D-C1D	3.21	130.05	125.03
2	A	801	HEM	CHD-C1D-ND	-3.14	121.05	124.42
2	A	801	HEM	CHD-C1D-C2D	-3.06	120.19	125.03
2	A	801	HEM	CMD-C2D-C1D	2.93	129.61	125.03
2	B	801	HEM	CHB-C1B-C2B	-2.91	118.68	126.95
2	B	801	HEM	C4D-C3D-C2D	-2.91	102.66	106.89

Continued on next page...

Continued from previous page...

Mol	Chain	Res	Type	Atoms	Z	Observed(°)	Ideal(°)
2	B	801	HEM	C3A-C4A-NA	2.85	114.71	110.14
4	A	803	HW1	C14-C26-N21	2.84	120.37	116.06
3	B	802	H4B	C4A-C4-N3	2.79	119.80	112.13
2	B	801	HEM	C4A-NA-C1A	-2.79	101.27	105.82
2	A	801	HEM	CHB-C1B-C2B	-2.77	119.07	126.95
3	B	802	H4B	O4-C4-C4A	-2.76	120.60	127.26
4	A	803	HW1	C25-C26-N21	-2.75	119.59	122.73
2	A	801	HEM	CHB-C1B-NB	-2.74	120.97	124.37
4	B	804	HW1	C14-C26-N21	2.69	120.13	116.06
2	B	801	HEM	C2A-C1A-NA	2.68	113.12	110.15
2	B	801	HEM	CHA-C4D-C3D	-2.58	120.47	125.23
3	A	802	H4B	O4-C4-C4A	-2.55	121.11	127.26
3	A	802	H4B	N2-C2-N3	2.51	122.06	116.76
2	A	801	HEM	CAD-CBD-CGD	-2.50	107.05	113.67
2	A	801	HEM	CHA-C1A-C2A	-2.48	119.88	125.30
3	A	802	H4B	C4A-C4-N3	2.39	118.70	112.13
2	A	801	HEM	CHA-C4D-C3D	-2.34	120.92	125.23
2	B	801	HEM	CHD-C1D-ND	-2.31	121.93	124.42
3	A	802	H4B	C2-N3-C4	-2.30	120.94	125.11
2	B	801	HEM	CAD-C3D-C4D	2.25	128.61	124.70
2	B	801	HEM	CBD-CAD-C3D	-2.21	106.43	112.53
4	B	804	HW1	N02-C02-N01	2.16	120.07	116.59
2	B	801	HEM	CHB-C1B-NB	-2.14	121.72	124.37
3	B	802	H4B	C4-C4A-N5	2.14	122.10	116.27
3	A	802	H4B	C4-C4A-N5	2.13	122.06	116.27
2	A	801	HEM	CBD-CAD-C3D	-2.07	106.82	112.53
2	A	801	HEM	C3A-C4A-NA	2.05	113.43	110.14

There are no chirality outliers.

All (10) torsion outliers are listed below:

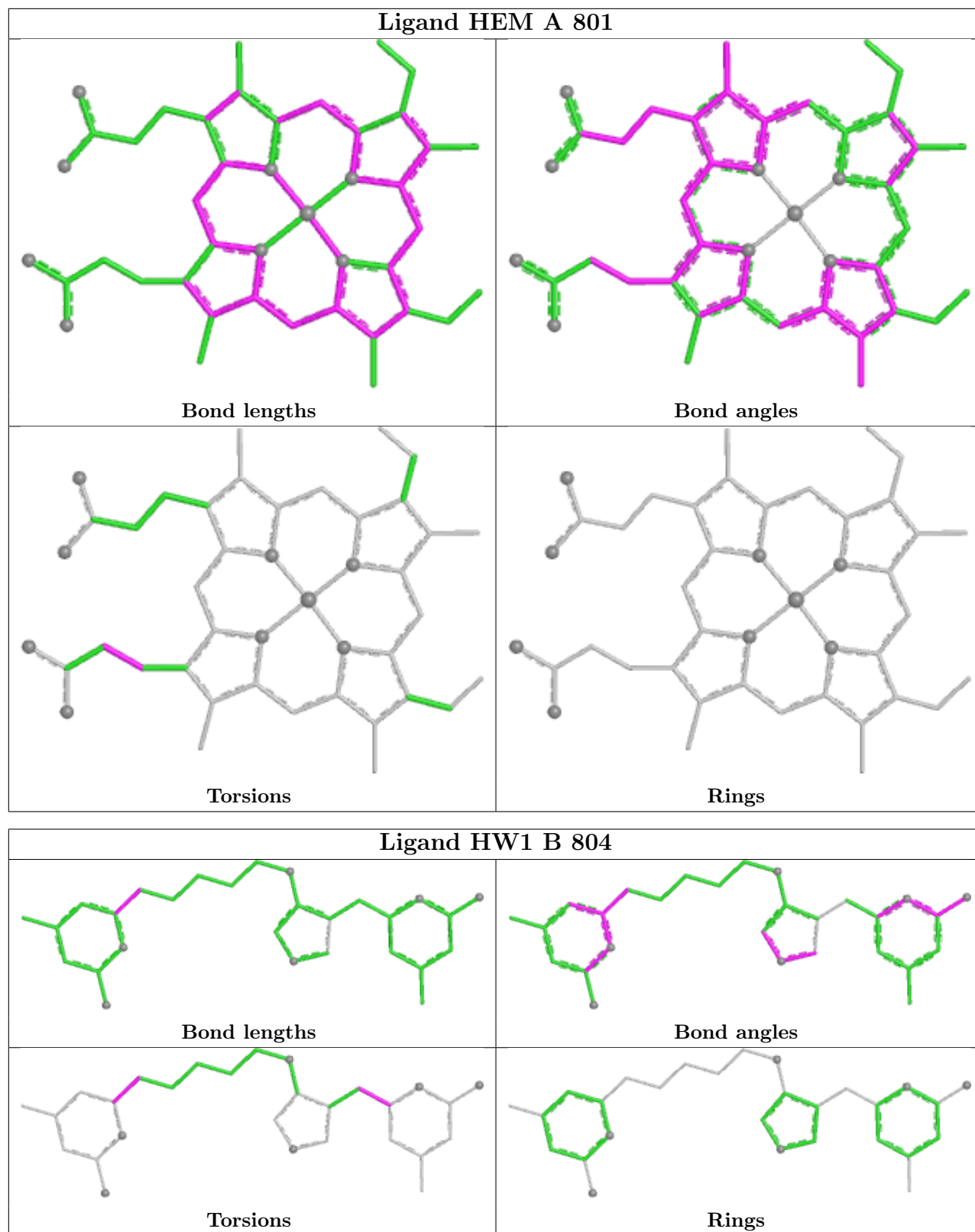
Mol	Chain	Res	Type	Atoms
4	A	803	HW1	C05-C06-C08-C3'
4	A	803	HW1	N01-C06-C08-C3'
4	B	804	HW1	C05-C06-C08-C3'
4	A	803	HW1	C11-C12-C13-C14
4	A	803	HW1	C10-C11-C12-C13
4	B	804	HW1	N01-C06-C08-C3'
2	A	801	HEM	C2A-CAA-CBA-CGA
4	A	803	HW1	C12-C13-C14-C26
4	B	804	HW1	C13-C14-C26-N21
4	A	803	HW1	C5'-C4'-O09-C10

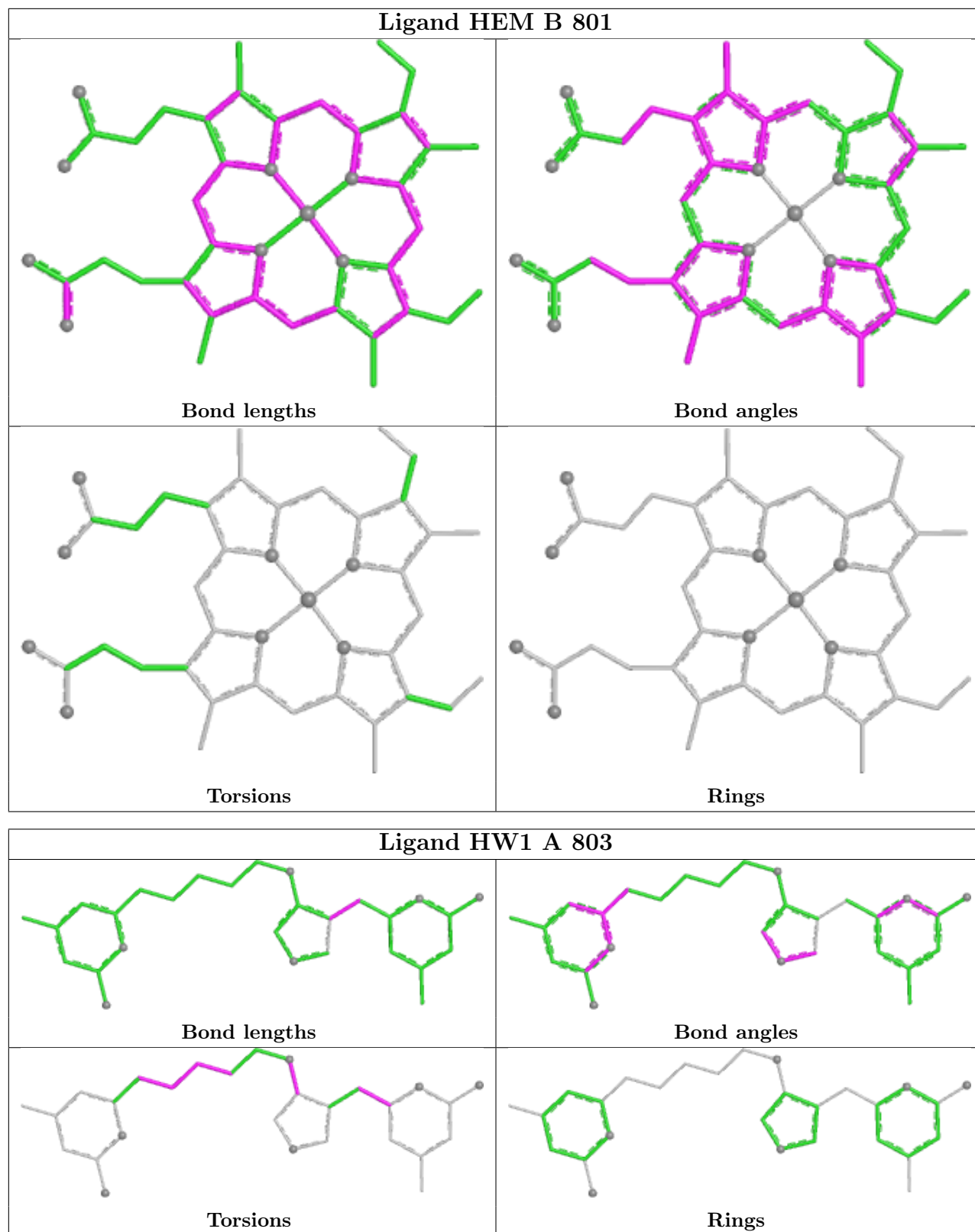
There are no ring outliers.

4 monomers are involved in 11 short contacts:

Mol	Chain	Res	Type	Clashes	Symm-Clashes
2	A	801	HEM	4	0
4	B	804	HW1	5	0
2	B	801	HEM	1	0
4	A	803	HW1	4	0

The following is a two-dimensional graphical depiction of Mogul quality analysis of bond lengths, bond angles, torsion angles, and ring geometry for all instances of the Ligand of Interest. In addition, ligands with molecular weight > 250 and outliers as shown on the validation Tables will also be included. For torsion angles, if less than 5% of the Mogul distribution of torsion angles is within 10 degrees of the torsion angle in question, then that torsion angle is considered an outlier. Any bond that is central to one or more torsion angles identified as an outlier by Mogul will be highlighted in the graph. For rings, the root-mean-square deviation (RMSD) between the ring in question and similar rings identified by Mogul is calculated over all ring torsion angles. If the average RMSD is greater than 60 degrees and the minimal RMSD between the ring in question and any Mogul-identified rings is also greater than 60 degrees, then that ring is considered an outlier. The outliers are highlighted in purple. The color gray indicates Mogul did not find sufficient equivalents in the CSD to analyse the geometry.





5.7 Other polymers [\(i\)](#)

There are no such residues in this entry.

5.8 Polymer linkage issues

There are no chain breaks in this entry.

6 Fit of model and data [i](#)

6.1 Protein, DNA and RNA chains [i](#)

In the following table, the column labelled ‘#RSRZ > 2’ contains the number (and percentage) of RSRZ outliers, followed by percent RSRZ outliers for the chain as percentile scores relative to all X-ray entries and entries of similar resolution. The OWAB column contains the minimum, median, 95th percentile and maximum values of the occupancy-weighted average B-factor per residue. The column labelled ‘Q < 0.9’ lists the number of (and percentage) of residues with an average occupancy less than 0.9.

Mol	Chain	Analysed	<RSRZ>	#RSRZ>2	OWAB(Å ²)	Q<0.9
1	A	407/422 (96%)	-0.03	8 (1%) 65 69	28, 53, 93, 121	1 (0%)
1	B	411/422 (97%)	-0.29	6 (1%) 72 76	25, 43, 70, 93	3 (0%)
All	All	818/844 (96%)	-0.16	14 (1%) 69 73	25, 48, 87, 121	4 (0%)

All (14) RSRZ outliers are listed below:

Mol	Chain	Res	Type	RSRZ
1	B	322	LEU	5.7
1	A	300	PHE	4.0
1	B	348	VAL	3.8
1	B	706	TYR	3.2
1	A	706	TYR	3.0
1	B	321	THR	3.0
1	A	355	PHE	2.8
1	A	322	LEU	2.7
1	A	321	THR	2.7
1	A	350	THR	2.4
1	B	350	THR	2.4
1	B	338	PRO	2.2
1	A	338	PRO	2.1
1	A	716	TRP	2.1

6.2 Non-standard residues in protein, DNA, RNA chains [i](#)

There are no non-standard protein/DNA/RNA residues in this entry.

6.3 Carbohydrates [i](#)

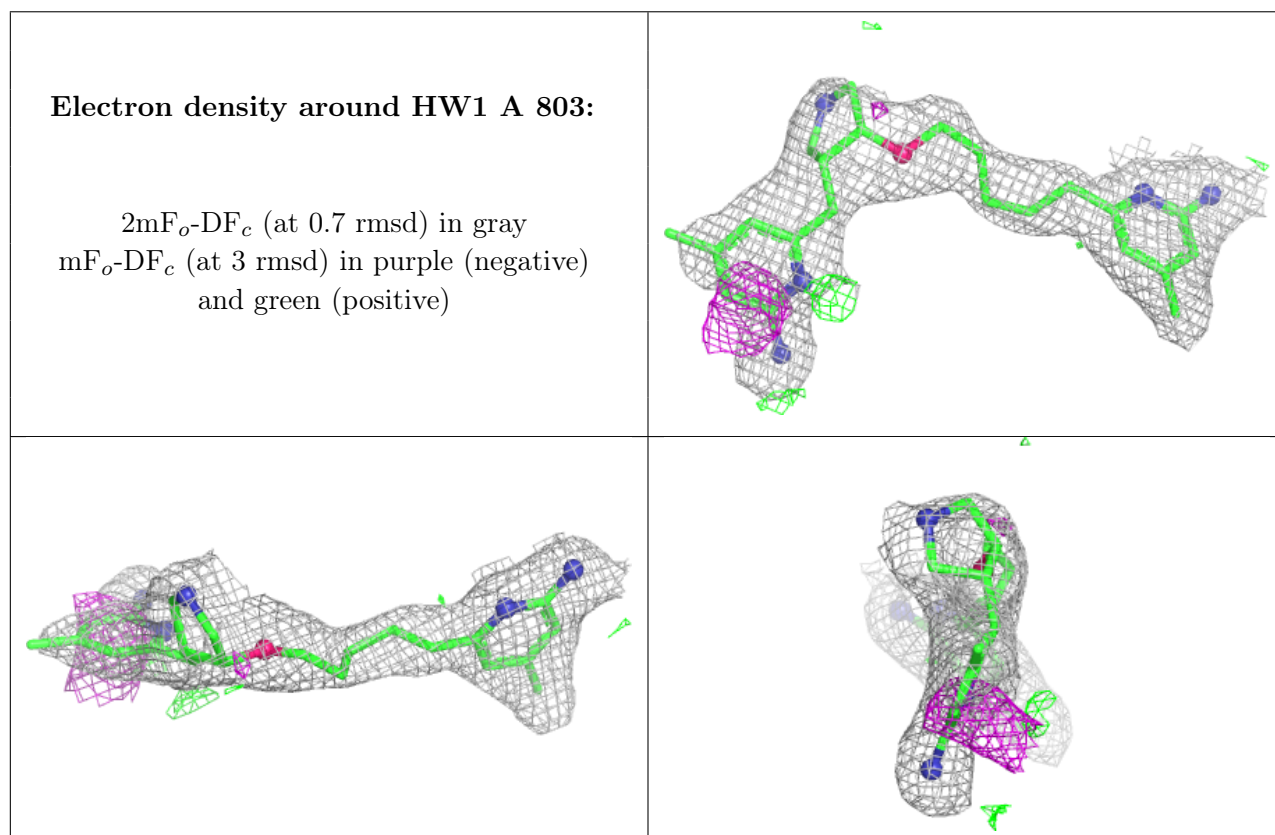
There are no oligosaccharides in this entry.

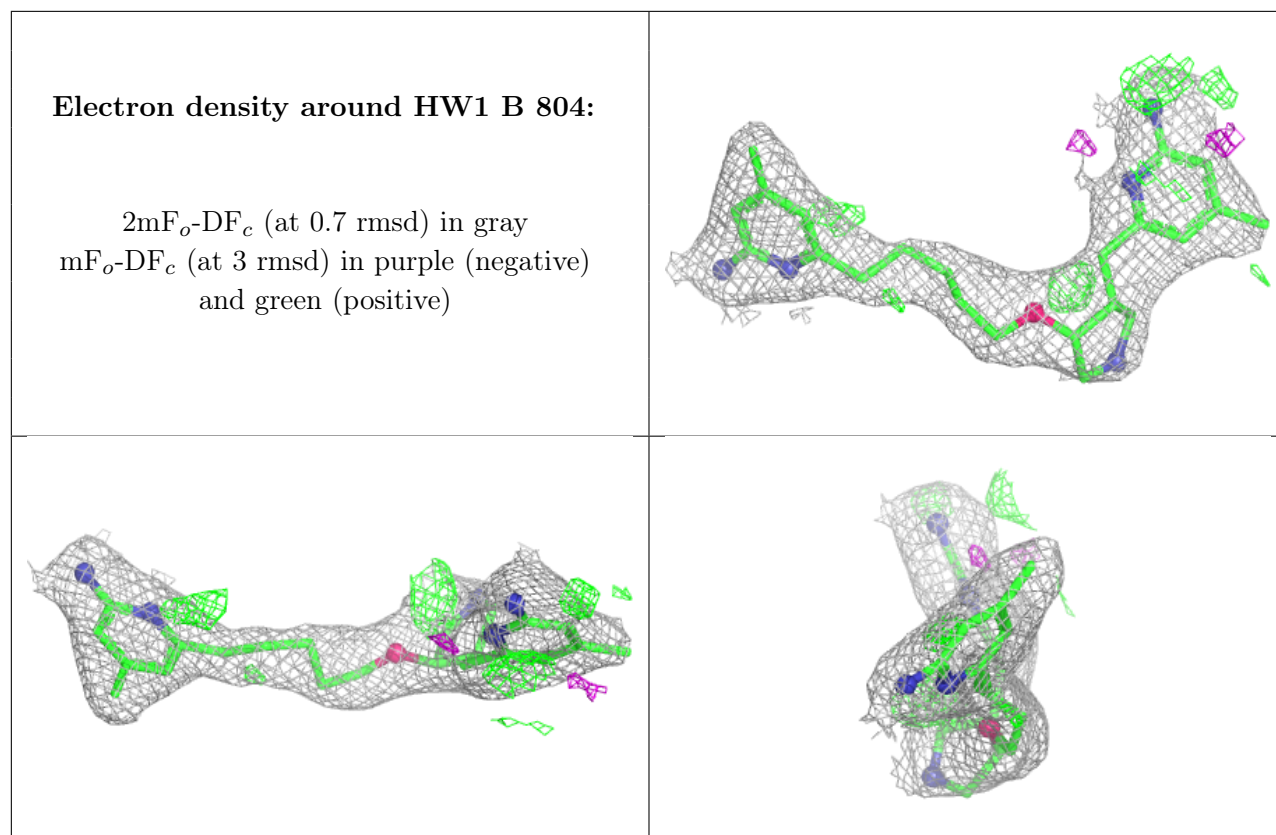
6.4 Ligands [i](#)

In the following table, the Atoms column lists the number of modelled atoms in the group and the number defined in the chemical component dictionary. The B-factors column lists the minimum, median, 95th percentile and maximum values of B factors of atoms in the group. The column labelled 'Q< 0.9' lists the number of atoms with occupancy less than 0.9.

Mol	Type	Chain	Res	Atoms	RSCC	RSR	B-factors(Å ²)	Q<0.9
4	HW1	A	803	28/28	0.91	0.12	32,52,67,69	0
4	HW1	B	804	28/28	0.92	0.11	35,48,61,70	0
5	ACT	B	803	4/4	0.92	0.12	49,49,50,53	0
5	ACT	A	804	4/4	0.94	0.17	56,63,67,67	0
3	H4B	B	802	17/17	0.96	0.07	32,34,39,40	0
3	H4B	A	802	17/17	0.97	0.05	34,36,41,42	0
2	HEM	A	801	43/43	0.98	0.07	32,35,44,47	0
2	HEM	B	801	43/43	0.98	0.07	29,33,39,44	0
6	ZN	A	805	1/1	1.00	0.02	40,40,40,40	0

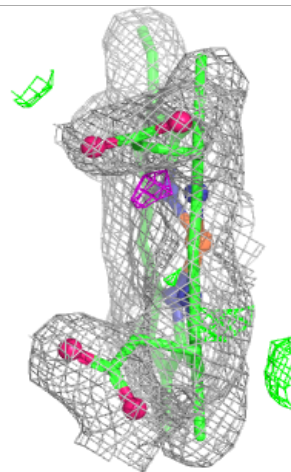
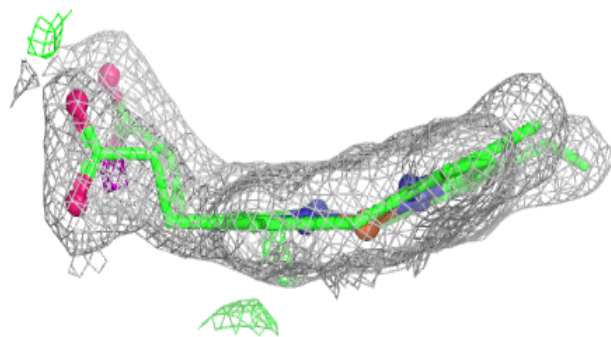
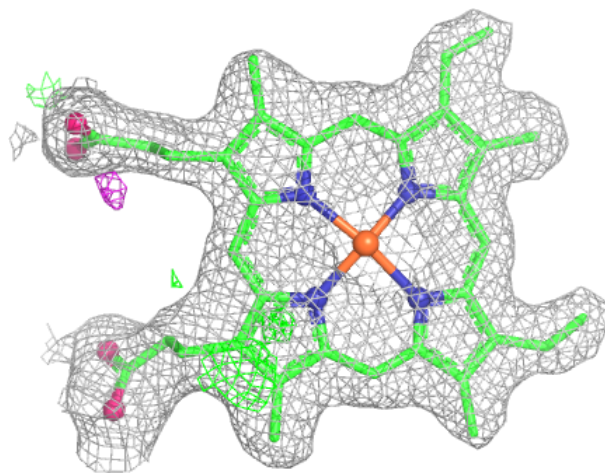
The following is a graphical depiction of the model fit to experimental electron density of all instances of the Ligand of Interest. In addition, ligands with molecular weight > 250 and outliers as shown on the geometry validation Tables will also be included. Each fit is shown from different orientation to approximate a three-dimensional view.

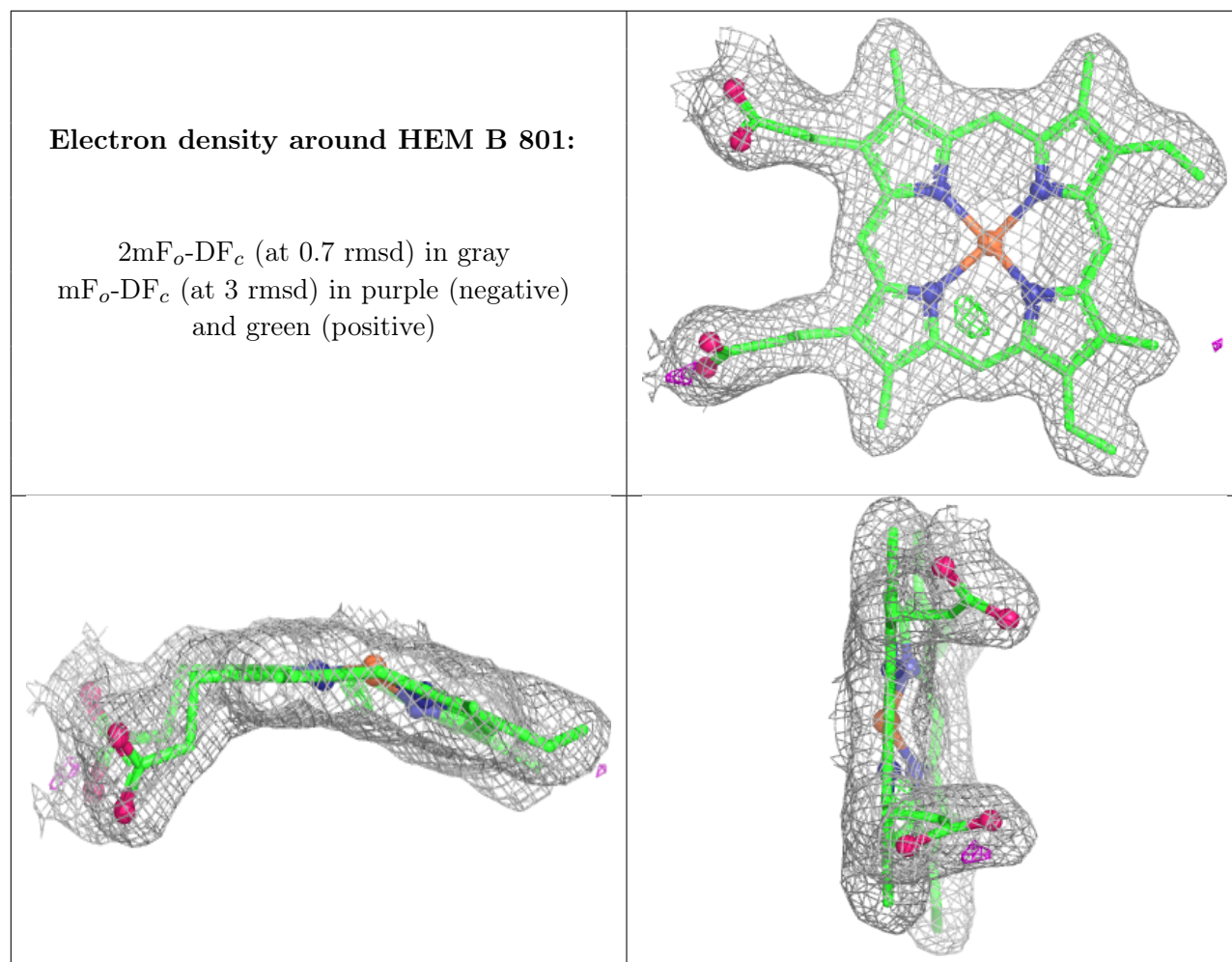




Electron density around HEM A 801:

$2mF_o-DF_c$ (at 0.7 rmsd) in gray
 mF_o-DF_c (at 3 rmsd) in purple (negative)
and green (positive)





6.5 Other polymers [i](#)

There are no such residues in this entry.