



# Full wwPDB X-ray Structure Validation Report ⓘ

Mar 9, 2026 – 08:56 AM UTC

PDB ID : 7EXP / pdb\_00007exp  
Title : Crystal structure of zebrafish TRAP1 with AMPPNP and MitoQ  
Authors : Lee, H.; Yoon, N.G.; Kang, B.H.; Lee, C.  
Deposited on : 2021-05-28  
Resolution : 2.30 Å(reported)

This is a Full wwPDB X-ray Structure Validation Report for a publicly released PDB entry.

We welcome your comments at [validation@mail.wwpdb.org](mailto:validation@mail.wwpdb.org)

A user guide is available at

<https://www.wwpdb.org/validation/2017/XrayValidationReportHelp>

with specific help available everywhere you see the ⓘ symbol.

The types of validation reports are described at

<http://www.wwpdb.org/validation/2017/FAQs#types>.

---

The following versions of software and data (see [references ⓘ](#)) were used in the production of this report:

MolProbity : 4-5-2 with Phenix2.0  
Mogul : 2022.3.0, CSD as543be (2022)  
Xtrriage (Phenix) : 2.0  
EDS : 3.0  
Buster-report : wwPDB partial adaption of 1.1.7 (2018)  
Percentile statistics : 20250101.v01 (using entries in the PDB archive January 1st 2025)  
CCP4 : 9.0.010 (Gargrove)  
Density-Fitness : 1.0.12  
Ideal geometry (proteins) : Engh & Huber (2001)  
Ideal geometry (DNA, RNA) : Parkinson et al. (1996)  
Validation Pipeline (wwPDB-VP) : 2.49

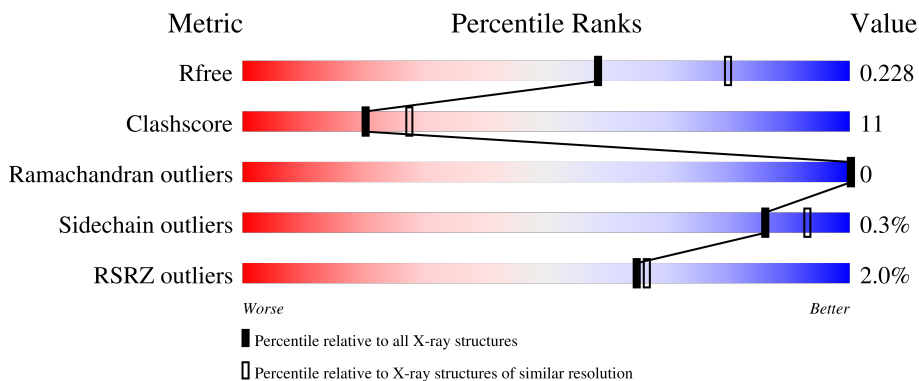
# 1 Overall quality at a glance

The following experimental techniques were used to determine the structure:

*X-RAY DIFFRACTION*

The reported resolution of this entry is 2.30 Å.

Percentile scores (ranging between 0-100) for global validation metrics of the entry are shown in the following graphic. The table shows the number of entries on which the scores are based.



Metric	Whole archive (#Entries)	Similar resolution (#Entries, resolution range(Å))
$R_{free}$	180053	6319 (2.30-2.30)
Clashscore	190562	6919 (2.30-2.30)
Ramachandran outliers	187476	6854 (2.30-2.30)
Sidechain outliers	187428	6854 (2.30-2.30)
RSRZ outliers	180081	6325 (2.30-2.30)

The table below summarises the geometric issues observed across the polymeric chains and their fit to the electron density. The red, orange, yellow and green segments of the lower bar indicate the fraction of residues that contain outliers for  $\geq 3$ , 2, 1 and 0 types of geometric quality criteria respectively. A grey segment represents the fraction of residues that are not modelled. The numeric value for each fraction is indicated below the corresponding segment, with a dot representing fractions  $\leq 5\%$ . The upper red bar (where present) indicates the fraction of residues that have poor fit to the electron density. The numeric value is given above the bar.

Mol	Chain	Length	Quality of chain
1	A	647	 2% 68% 19% 11%
1	B	647	 2% 72% 19% 7%

## 2 Entry composition [i](#)

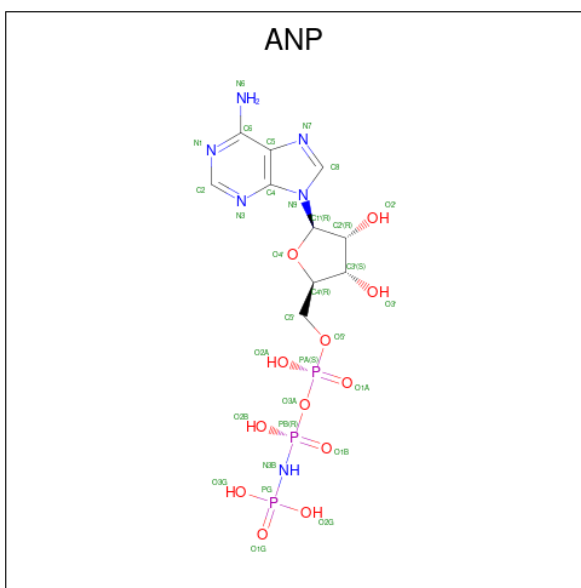
There are 6 unique types of molecules in this entry. The entry contains 9793 atoms, of which 0 are hydrogens and 0 are deuteriums.

In the tables below, the ZeroOcc column contains the number of atoms modelled with zero occupancy, the AltConf column contains the number of residues with at least one atom in alternate conformation and the Trace column contains the number of residues modelled with at most 2 atoms.

- Molecule 1 is a protein called TNF receptor-associated protein 1.

Mol	Chain	Residues	Atoms					ZeroOcc	AltConf	Trace
			Total	C	N	O	S			
1	A	574	Total 4608	C 2924	N 796	O 868	S 20	0	1	0
1	B	599	Total 4855	C 3080	N 837	O 916	S 22	0	3	0

- Molecule 2 is PHOSPHOAMINOPHOSPHONIC ACID-ADENYLATE ESTER (CCD ID: ANP) (formula: C<sub>10</sub>H<sub>17</sub>N<sub>6</sub>O<sub>12</sub>P<sub>3</sub>).



Mol	Chain	Residues	Atoms					ZeroOcc	AltConf
			Total	C	N	O	P		
2	A	1	Total 31	C 10	N 6	O 12	P 3	0	0
2	B	1	Total 31	C 10	N 6	O 12	P 3	0	0

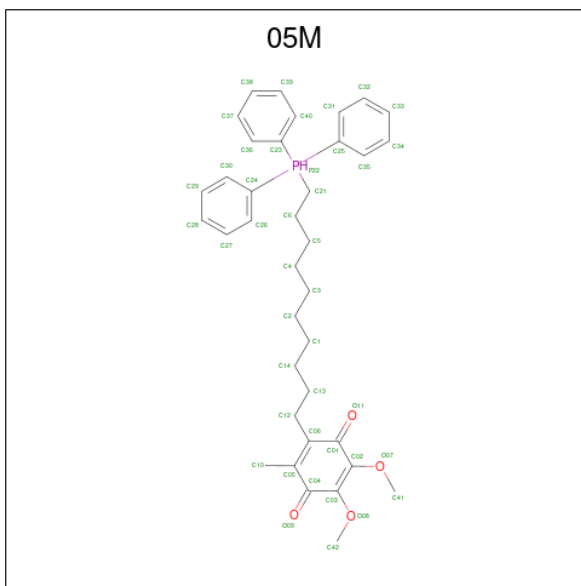
- Molecule 3 is MAGNESIUM ION (CCD ID: MG) (formula: Mg).

Mol	Chain	Residues	Atoms	ZeroOcc	AltConf
3	A	1	Total Mg 1 1	0	0
3	B	1	Total Mg 1 1	0	0

- Molecule 4 is COBALT (II) ION (CCD ID: CO) (formula: Co).

Mol	Chain	Residues	Atoms	ZeroOcc	AltConf
4	A	2	Total Co 2 2	0	0
4	B	2	Total Co 2 2	0	0

- Molecule 5 is 2,3-dimethoxy-5-methyl-6-[10-(triphenyl- $\text{P}^{\text{5}}$ -phosphanyl)decyl]cyclohexa-2,5-diene-1,4-dione (CCD ID: 05M) (formula:  $\text{C}_{37}\text{H}_{45}\text{O}_4\text{P}$ ) (labeled as "Ligand of Interest" by depositor).



Mol	Chain	Residues	Atoms	ZeroOcc	AltConf
5	A	1	Total C O P 36 31 4 1	0	0

- Molecule 6 is water.

Mol	Chain	Residues	Atoms	ZeroOcc	AltConf
6	A	109	Total O 109 109	0	0

*Continued on next page...*

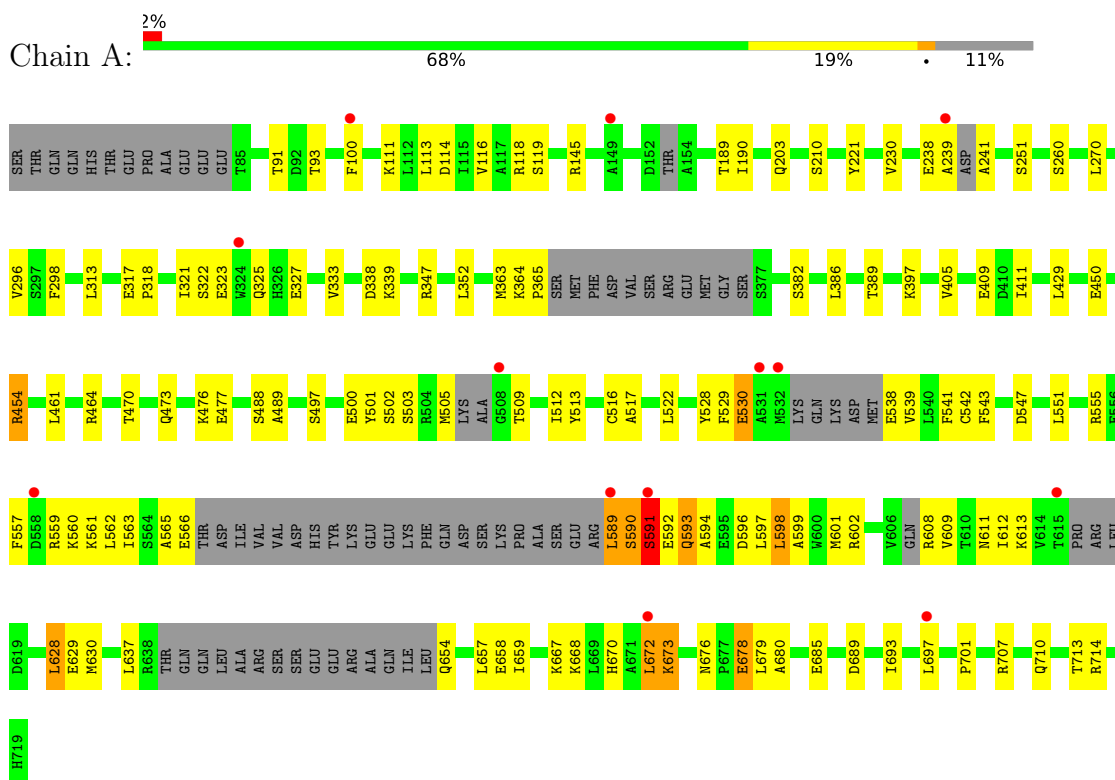
*Continued from previous page...*

<b>Mol</b>	<b>Chain</b>	<b>Residues</b>	<b>Atoms</b>		<b>ZeroOcc</b>	<b>AltConf</b>
6	B	117	Total 117	O 117	0	0

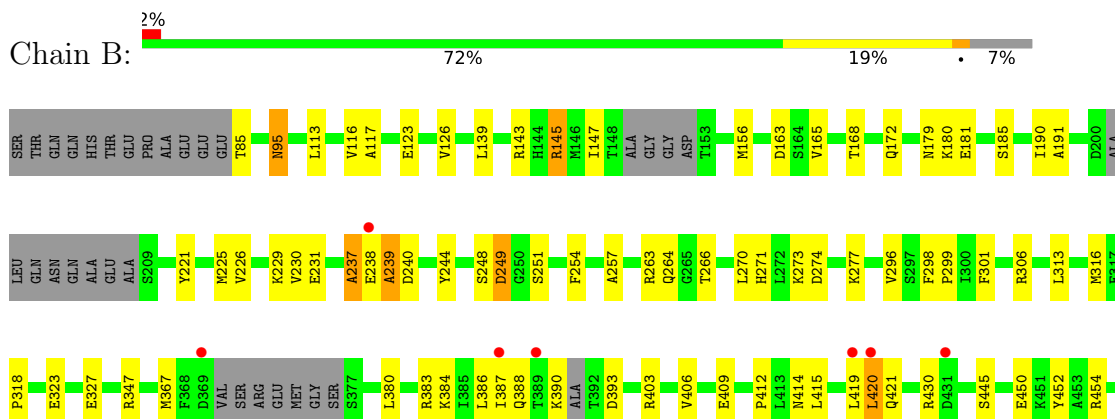
### 3 Residue-property plots [i](#)

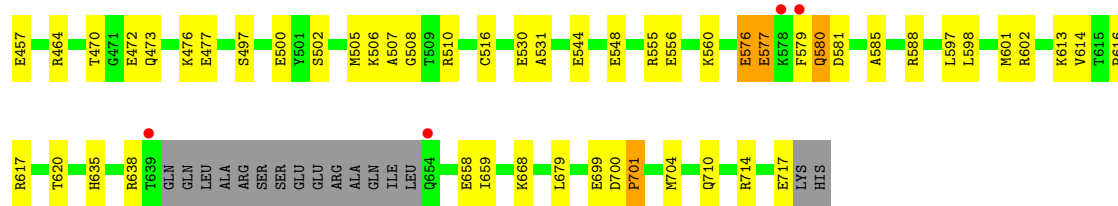
These plots are drawn for all protein, RNA, DNA and oligosaccharide chains in the entry. The first graphic for a chain summarises the proportions of the various outlier classes displayed in the second graphic. The second graphic shows the sequence view annotated by issues in geometry and electron density. Residues are color-coded according to the number of geometric quality criteria for which they contain at least one outlier: green = 0, yellow = 1, orange = 2 and red = 3 or more. A red dot above a residue indicates a poor fit to the electron density ( $RSRZ > 2$ ). Stretches of 2 or more consecutive residues without any outlier are shown as a green connector. Residues present in the sample, but not in the model, are shown in grey.

- Molecule 1: TNF receptor-associated protein 1



- Molecule 1: TNF receptor-associated protein 1





## 4 Data and refinement statistics

Property	Value	Source
Space group	C 1 2 1	Depositor
Cell constants a, b, c, $\alpha$ , $\beta$ , $\gamma$	179.34Å 96.52Å 125.61Å 90.00° 134.39° 90.00°	Depositor
Resolution (Å)	31.20 – 2.30 31.20 – 2.30	Depositor EDS
% Data completeness (in resolution range)	98.7 (31.20-2.30) 98.6 (31.20-2.30)	Depositor EDS
$R_{merge}$	0.09	Depositor
$R_{sym}$	(Not available)	Depositor
$\langle I/\sigma(I) \rangle$ <sup>1</sup>	2.08 (at 2.29Å)	Xtriage
Refinement program	PHENIX 1.9_1692	Depositor
R, $R_{free}$	0.195 , 0.241 (Not available) , 0.228	Depositor DCC
$R_{free}$ test set	2011 reflections (2.95%)	wwPDB-VP
Wilson B-factor (Å <sup>2</sup> )	42.8	Xtriage
Anisotropy	0.241	Xtriage
Bulk solvent $k_{sol}$ (e/Å <sup>3</sup> ), $B_{sol}$ (Å <sup>2</sup> )	0.35 , 62.2	EDS
L-test for twinning <sup>2</sup>	$\langle  L  \rangle = 0.48$ , $\langle L^2 \rangle = 0.31$	Xtriage
Estimated twinning fraction	0.004 for h+2*k,-h-l 0.016 for h,-k,-h-l 0.024 for -h-2*k,-k,l	Xtriage
$F_o, F_c$ correlation	0.96	EDS
Total number of atoms	9793	wwPDB-VP
Average B, all atoms (Å <sup>2</sup> )	64.0	wwPDB-VP

Xtriage's analysis on translational NCS is as follows: *The largest off-origin peak in the Patterson function is 4.62% of the height of the origin peak. No significant pseudotranslation is detected.*

<sup>1</sup>Intensities estimated from amplitudes.

<sup>2</sup>Theoretical values of  $\langle |L| \rangle$ ,  $\langle L^2 \rangle$  for acentric reflections are 0.5, 0.333 respectively for untwinned datasets, and 0.375, 0.2 for perfectly twinned datasets.

## 5 Model quality [i](#)

### 5.1 Standard geometry [i](#)

Bond lengths and bond angles in the following residue types are not validated in this section: MG, CO, 05M, ANP

The Z score for a bond length (or angle) is the number of standard deviations the observed value is removed from the expected value. A bond length (or angle) with  $|Z| > 5$  is considered an outlier worth inspection. RMSZ is the root-mean-square of all Z scores of the bond lengths (or angles).

Mol	Chain	Bond lengths		Bond angles	
		RMSZ	# $ Z  > 5$	RMSZ	# $ Z  > 5$
1	A	0.41	1/4691 (0.0%)	0.90	27/6317 (0.4%)
1	B	0.50	8/4953 (0.2%)	0.71	14/6672 (0.2%)
All	All	0.46	9/9644 (0.1%)	0.81	41/12989 (0.3%)

Chiral center outliers are detected by calculating the chiral volume of a chiral center and verifying if the center is modelled as a planar moiety or with the opposite hand. A planarity outlier is detected by checking planarity of atoms in a peptide group, atoms in a mainchain group or atoms of a sidechain that are expected to be planar.

Mol	Chain	#Chirality outliers	#Planarity outliers
1	A	0	2
1	B	0	4
All	All	0	6

All (9) bond length outliers are listed below:

Mol	Chain	Res	Type	Atoms	Z	Observed(Å)	Ideal(Å)
1	B	699	GLU	C-O	-12.76	1.09	1.23
1	B	700	ASP	CA-C	-10.75	1.40	1.53
1	B	700	ASP	C-O	-9.89	1.11	1.24
1	B	699	GLU	CA-C	-9.73	1.40	1.53
1	B	701	PRO	C-O	-8.74	1.13	1.24
1	B	701	PRO	CA-CB	-6.83	1.42	1.54
1	B	668	LYS	CE-NZ	5.90	1.67	1.49
1	A	559	ARG	CZ-NH2	-5.52	1.26	1.33
1	B	95	ASN	CG-OD1	5.07	1.33	1.23

All (41) bond angle outliers are listed below:

Mol	Chain	Res	Type	Atoms	Z	Observed(°)	Ideal(°)
1	A	454	ARG	CB-CG-CD	-15.29	76.12	111.30
1	B	576	GLU	N-CA-C	-14.08	88.97	109.96
1	A	628	LEU	CB-CG-CD2	-13.37	70.59	110.70
1	B	576	GLU	CB-CA-C	11.50	126.72	110.16
1	A	591	SER	N-CA-CB	11.44	129.96	110.50
1	A	628	LEU	CD1-CG-CD2	-11.19	86.19	110.80
1	A	454	ARG	CA-CB-CG	10.67	135.43	114.10
1	A	611	ASN	CB-CA-C	-10.65	87.96	109.79
1	A	590	SER	CB-CA-C	9.87	134.23	112.82
1	A	710	GLN	CA-CB-CG	9.84	133.78	114.10
1	A	454	ARG	CG-CD-NE	9.68	133.29	112.00
1	A	654	GLN	N-CA-C	-8.66	86.75	111.00
1	A	654	GLN	CA-CB-CG	8.62	131.35	114.10
1	A	628	LEU	CB-CG-CD1	8.61	136.54	110.70
1	A	397	LYS	CB-CG-CD	8.41	130.65	111.30
1	A	710	GLN	CB-CA-C	8.37	124.21	110.81
1	B	699	GLU	N-CA-C	-7.78	97.80	109.86
1	A	530	GLU	N-CA-C	-7.49	101.29	110.88
1	A	529	PHE	N-CA-C	-7.46	95.53	108.52
1	B	699	GLU	CA-C-O	-7.46	112.17	121.50
1	B	577	GLU	N-CA-C	-7.43	92.76	107.69
1	B	457	GLU	CA-CB-CG	7.20	128.49	114.10
1	A	591	SER	N-CA-C	-7.03	91.31	111.00
1	A	673	LYS	N-CA-C	-6.95	103.14	111.69
1	A	710	GLN	N-CA-CB	-6.71	99.94	109.94
1	B	700	ASP	O-C-N	6.61	126.62	121.47
1	A	654	GLN	N-CA-CB	6.43	121.43	110.50
1	A	609	VAL	CG1-CB-CG2	6.32	124.70	110.80
1	A	672	LEU	CB-CA-C	-6.13	101.25	111.13
1	B	701	PRO	CA-N-CD	-6.08	103.49	112.00
1	A	454	ARG	N-CA-CB	-5.82	101.33	110.30
1	A	502	SER	CB-CA-C	-5.67	99.77	110.67
1	B	457	GLU	CB-CA-C	-5.38	99.72	110.42
1	B	668	LYS	CG-CD-CE	-5.35	99.00	111.30
1	A	611	ASN	N-CA-C	-5.31	101.28	109.52
1	B	145	ARG	CA-C-N	-5.17	113.02	122.38
1	B	145	ARG	C-N-CA	-5.17	113.02	122.38
1	A	598	LEU	CA-CB-CG	5.11	134.20	116.30
1	B	239	ALA	N-CA-C	-5.07	96.82	111.00
1	B	457	GLU	CB-CG-CD	5.02	121.13	112.60
1	A	678	GLU	CG-CD-OE2	-5.00	106.89	118.40

There are no chirality outliers.

All (6) planarity outliers are listed below:

Mol	Chain	Res	Type	Group
1	A	589	LEU	Peptide
1	A	593	GLN	Peptide
1	B	237	ALA	Peptide
1	B	249	ASP	Peptide
1	B	420	LEU	Peptide
1	B	580	GLN	Peptide

## 5.2 Too-close contacts [i](#)

In the following table, the Non-H and H(model) columns list the number of non-hydrogen atoms and hydrogen atoms in the chain respectively. The H(added) column lists the number of hydrogen atoms added and optimized by MolProbity. The Clashes column lists the number of clashes within the asymmetric unit, whereas Symm-Clashes lists symmetry-related clashes.

Mol	Chain	Non-H	H(model)	H(added)	Clashes	Symm-Clashes
1	A	4608	0	4596	101	1
1	B	4855	0	4860	119	3
2	A	31	0	13	0	0
2	B	31	0	13	0	0
3	A	1	0	0	0	0
3	B	1	0	0	0	0
4	A	2	0	0	0	0
4	B	2	0	0	0	0
5	A	36	0	0	6	0
6	A	109	0	0	4	0
6	B	117	0	0	14	0
All	All	9793	0	9482	215	3

The all-atom clashscore is defined as the number of clashes found per 1000 atoms (including hydrogen atoms). The all-atom clashscore for this structure is 11.

All (215) close contacts within the same asymmetric unit are listed below, sorted by their clash magnitude.

Atom-1	Atom-2	Interatomic distance (Å)	Clash overlap (Å)
1:A:461:LEU:HD11	5:A:805:05M:C10	1.72	1.18
1:B:237:ALA:HB3	1:B:238:GLU:HG3	1.15	1.13
1:A:461:LEU:CG	5:A:805:05M:C10	2.29	1.10
1:B:414:ASN:ND2	1:B:419:LEU:H	1.49	1.08
1:B:237:ALA:CB	1:B:264:GLN:NE2	2.16	1.08

*Continued on next page...*

*Continued from previous page...*

Atom-1	Atom-2	Interatomic distance (Å)	Clash overlap (Å)
1:B:237:ALA:HB2	1:B:264:GLN:NE2	1.69	1.07
1:A:461:LEU:CD1	5:A:805:05M:C10	2.34	1.05
1:B:237:ALA:CB	1:B:238:GLU:HG3	1.87	1.04
1:A:672:LEU:O	1:A:680:ALA:HB2	1.56	1.03
1:A:461:LEU:HD21	5:A:805:05M:C10	1.89	1.02
1:A:592:GLU:HG2	1:A:593:GLN:H	1.24	1.02
1:A:593:GLN:HG2	1:A:596:ASP:HB3	1.39	1.02
1:B:414:ASN:HD21	1:B:419:LEU:N	1.56	1.02
1:B:380:LEU:HD12	1:B:406:VAL:O	1.65	0.97
1:B:237:ALA:HB2	1:B:264:GLN:HE21	1.22	0.95
1:A:461:LEU:CD2	5:A:805:05M:C10	2.46	0.94
1:A:713:THR:O	6:A:901:HOH:O	1.85	0.94
1:B:383:ARG:NH1	6:B:901:HOH:O	2.02	0.92
1:B:380:LEU:HD23	1:B:420:LEU:HD11	1.53	0.91
1:B:414:ASN:ND2	1:B:419:LEU:N	2.17	0.90
1:A:461:LEU:HG	5:A:805:05M:C10	2.03	0.87
1:B:414:ASN:HD21	1:B:419:LEU:H	0.86	0.85
1:B:237:ALA:HB3	1:B:238:GLU:CG	2.03	0.84
1:B:163:ASP:HB3	1:B:168:THR:HG22	1.58	0.84
1:A:598:LEU:HD12	1:A:659:ILE:HD11	1.59	0.81
1:B:237:ALA:CB	1:B:264:GLN:HE22	1.95	0.80
1:A:352:LEU:HD11	1:A:429:LEU:HD13	1.67	0.77
1:B:454:ARG:NH1	6:B:903:HOH:O	2.19	0.76
1:A:593:GLN:CG	1:A:596:ASP:HB3	2.16	0.76
1:A:678:GLU:HG2	1:A:714:ARG:HH12	1.51	0.74
1:B:506:LYS:HD2	1:B:508:GLY:H	1.51	0.74
1:A:628:LEU:HD23	1:A:629:GLU:HG3	1.68	0.74
1:B:237:ALA:CA	1:B:264:GLN:NE2	2.51	0.74
1:A:676:ASN:ND2	1:A:679:LEU:HB2	2.04	0.73
1:B:249:ASP:HB2	1:B:251:SER:H	1.53	0.73
1:A:464:ARG:NH2	1:A:547:ASP:OD1	2.22	0.72
1:A:628:LEU:CD2	1:A:629:GLU:HG3	2.20	0.72
1:A:522:LEU:HB3	1:A:630:MET:HE1	1.71	0.72
1:B:679:LEU:HD13	1:B:714:ARG:HG2	1.71	0.72
1:B:387:ILE:HG21	1:B:420:LEU:HD21	1.72	0.71
1:A:592:GLU:HG2	1:A:593:GLN:N	2.03	0.71
1:B:367:MET:SD	1:B:403[B]:ARG:NH2	2.65	0.69
1:A:382:SER:HB2	1:A:411:ILE:HD11	1.74	0.68
1:B:384:LYS:O	6:B:902:HOH:O	2.11	0.68
1:A:593:GLN:HB3	1:A:597:LEU:H	1.57	0.68
1:A:678:GLU:CG	1:A:714:ARG:HH12	2.07	0.67

*Continued on next page...*

*Continued from previous page...*

Atom-1	Atom-2	Interatomic distance (Å)	Clash overlap (Å)
1:A:238:GLU:HG2	1:A:239:ALA:H	1.58	0.67
1:A:592:GLU:CG	1:A:593:GLN:H	2.04	0.67
1:A:590:SER:OG	1:A:594:ALA:HB2	1.95	0.67
1:B:414:ASN:HD22	1:B:419:LEU:C	2.02	0.67
1:B:393:ASP:O	1:B:430:ARG:NH1	2.28	0.66
1:B:380:LEU:CD2	1:B:420:LEU:HD11	2.25	0.66
1:B:237:ALA:HA	1:B:264:GLN:NE2	2.11	0.66
1:B:414:ASN:ND2	1:B:419:LEU:CA	2.60	0.65
1:B:143:ARG:HB2	1:B:156:MET:HE1	1.79	0.65
1:A:517:ALA:HB1	1:A:630:MET:HE2	1.77	0.65
1:B:313:LEU:HA	1:B:316:MET:HE2	1.79	0.64
1:A:590:SER:OG	1:A:591:SER:HA	1.97	0.64
1:A:239:ALA:O	1:A:241:ALA:N	2.31	0.64
1:A:488:SER:OG	1:A:539:VAL:N	2.28	0.63
1:B:530:GLU:OE2	1:B:620:THR:HB	2.00	0.62
1:B:237:ALA:HB1	1:B:264:GLN:HE22	1.64	0.62
1:B:601:MET:HE1	1:B:659:ILE:HG21	1.80	0.62
1:B:581:ASP:OD2	1:B:588:ARG:NH1	2.33	0.62
1:A:593:GLN:HB2	1:A:670:HIS:CE1	2.35	0.61
1:B:390:LYS:NZ	6:B:906:HOH:O	2.21	0.61
1:A:100:PHE:HA	1:B:257:ALA:HB2	1.83	0.61
1:A:386:LEU:HD21	1:A:389:THR:HG22	1.83	0.60
1:A:322:SER:HB2	1:A:325:GLN:HG2	1.83	0.60
1:B:601:MET:HE1	1:B:659:ILE:HD13	1.84	0.59
1:B:367:MET:HA	6:B:942:HOH:O	2.02	0.59
1:B:635:HIS:ND1	6:B:904:HOH:O	2.32	0.59
1:B:414:ASN:ND2	1:B:419:LEU:HB2	2.18	0.59
1:B:638:ARG:NH2	6:B:904:HOH:O	2.19	0.59
1:A:528:TYR:HE2	1:A:629:GLU:HG2	1.69	0.57
1:A:230:VAL:HG22	1:A:270:LEU:HD22	1.86	0.57
1:B:116:VAL:HG11	1:B:221:TYR:HB2	1.87	0.57
1:A:516:CYS:SG	1:A:542[A]:CYS:HB2	2.44	0.57
1:B:472:GLU:O	1:B:476:LYS:HG3	2.04	0.56
1:B:470:THR:HG23	1:B:476:LYS:HG2	1.87	0.56
1:B:414:ASN:ND2	1:B:419:LEU:O	2.36	0.56
1:A:597:LEU:O	1:A:601:MET:HG3	2.06	0.56
1:A:672:LEU:O	1:A:680:ALA:CB	2.43	0.56
1:A:599:ALA:HA	1:A:602:ARG:HG3	1.87	0.55
1:A:260:SER:O	1:B:95:ASN:N	2.30	0.55
1:B:248:SER:OG	1:B:249:ASP:N	2.40	0.55
1:B:380:LEU:CD2	1:B:420:LEU:CD1	2.83	0.55

*Continued on next page...*

*Continued from previous page...*

Atom-1	Atom-2	Interatomic distance (Å)	Clash overlap (Å)
1:B:497:SER:OG	1:B:500:GLU:HG3	2.07	0.55
1:A:210:SER:HB2	1:A:409:GLU:CD	2.32	0.54
1:B:180:LYS:HB2	1:B:244:TYR:CZ	2.42	0.54
1:B:580:GLN:HG3	1:B:581:ASP:H	1.73	0.54
1:A:597:LEU:HD23	1:A:670:HIS:HA	1.89	0.54
1:B:581:ASP:OD2	1:B:588:ARG:CZ	2.56	0.53
1:A:637:LEU:HD21	1:A:697:LEU:HD23	1.90	0.53
1:B:117:ALA:O	1:B:225:MET:HG2	2.09	0.53
1:B:598:LEU:HD11	1:B:614:VAL:HG13	1.91	0.53
1:A:464:ARG:NH1	6:A:906:HOH:O	2.35	0.53
1:A:339:LYS:N	1:A:339:LYS:HD3	2.24	0.53
1:A:497:SER:OG	1:A:500:GLU:HG3	2.09	0.53
1:A:318:PRO:HD3	1:A:347:ARG:HD2	1.90	0.53
1:B:387:ILE:HG22	1:B:388:GLN:H	1.74	0.52
1:A:473:GLN:OE1	1:A:477:GLU:OE1	2.27	0.52
1:B:502:SER:HA	1:B:505:MET:HE2	1.90	0.52
1:A:317:GLU:CD	1:A:347:ARG:HH12	2.16	0.52
1:B:414:ASN:ND2	1:B:419:LEU:CB	2.73	0.52
1:B:147:ILE:O	1:B:147:ILE:HG22	2.10	0.52
1:B:531:ALA:O	1:B:617:ARG:NH2	2.41	0.51
1:A:513:TYR:CD1	1:A:563:ILE:HB	2.45	0.51
1:A:338:ASP:C	1:A:339:LYS:HD3	2.36	0.51
1:A:313:LEU:HD21	1:A:325:GLN:HB3	1.93	0.51
1:B:555:ARG:NH2	1:B:556:GLU:OE2	2.43	0.51
1:A:505:MET:HE2	1:A:509:THR:HB	1.92	0.50
1:B:598:LEU:O	1:B:602:ARG:HG3	2.11	0.50
1:A:561:LYS:HB3	1:A:563:ILE:HD11	1.93	0.50
1:B:505:MET:HE1	1:B:560:LYS:HD3	1.94	0.50
1:B:168:THR:HG23	6:B:917:HOH:O	2.10	0.50
1:B:502:SER:HA	1:B:505:MET:HG3	1.93	0.50
1:B:577:GLU:HG2	1:B:579:PHE:HD2	1.77	0.49
1:A:557:PHE:O	1:A:560:LYS:HG2	2.12	0.49
1:A:323:GLU:O	1:A:327:GLU:HG3	2.13	0.49
1:A:501:TYR:CE2	1:A:538:GLU:HG2	2.47	0.49
1:B:231:GLU:OE2	1:B:271:HIS:NE2	2.34	0.49
1:B:85:THR:N	6:B:921:HOH:O	2.46	0.49
1:B:516:CYS:SG	1:B:548:GLU:HB2	2.53	0.49
1:B:367:MET:HG3	1:B:367:MET:O	2.12	0.48
1:A:470:THR:HG23	1:A:476:LYS:HG3	1.95	0.48
1:B:597:LEU:HG	1:B:601:MET:HE2	1.95	0.48
1:A:668:LYS:HE3	1:B:717:GLU:C	2.38	0.48

*Continued on next page...*

*Continued from previous page...*

Atom-1	Atom-2	Interatomic distance (Å)	Clash overlap (Å)
1:A:333:VAL:HG21	1:A:405:VAL:HG23	1.95	0.48
1:B:237:ALA:C	1:B:238:GLU:HG3	2.38	0.48
1:B:506:LYS:HD2	1:B:507:ALA:N	2.29	0.48
1:A:296:VAL:HG12	1:A:298:PHE:H	1.78	0.48
1:A:668:LYS:O	1:A:672:LEU:HD12	2.13	0.48
1:A:313:LEU:HG	1:A:321:ILE:HD12	1.96	0.47
1:A:676:ASN:HD22	1:A:679:LEU:HB2	1.79	0.47
1:B:616:PRO:O	6:B:905:HOH:O	2.20	0.47
1:A:450:GLU:HG2	1:A:454:ARG:NH1	2.29	0.47
1:A:500:GLU:HA	1:A:503:SER:HB3	1.95	0.47
1:A:512:ILE:HG13	1:A:560:LYS:HG3	1.97	0.47
1:B:409:GLU:HG2	6:B:901:HOH:O	2.14	0.47
1:A:364:LYS:HG2	1:A:365:PRO:HD2	1.95	0.47
1:B:445:SER:HB2	1:B:452:TYR:CD2	2.51	0.46
1:B:613:LYS:HG3	1:B:658:GLU:HG2	1.97	0.46
1:B:248:SER:HB2	1:B:254:PHE:HB3	1.97	0.46
1:B:412:PRO:HB2	1:B:421:GLN:HB2	1.97	0.46
1:A:114:ASP:OD2	1:A:118:ARG:NH1	2.49	0.46
1:B:263:ARG:NH1	6:B:925:HOH:O	2.48	0.46
1:B:414:ASN:HD22	1:B:419:LEU:CA	2.25	0.46
1:A:114:ASP:OD1	1:A:118:ARG:HD3	2.14	0.46
1:A:116:VAL:HG11	1:A:221:TYR:HB2	1.96	0.46
1:B:274:ASP:HA	1:B:277:LYS:NZ	2.31	0.46
1:B:323:GLU:O	1:B:327:GLU:HG3	2.16	0.46
1:A:551:LEU:HD22	1:A:562:LEU:HD22	1.99	0.45
1:B:704:MET:HE3	1:B:704:MET:HB2	1.76	0.45
1:A:322:SER:H	1:A:325:GLN:HG3	1.80	0.45
1:A:113:LEU:HG	1:A:190:ILE:HD11	1.98	0.45
1:A:594:ALA:O	1:A:598:LEU:HB2	2.16	0.45
1:A:589:LEU:HD22	1:A:667:LYS:NZ	2.31	0.45
1:B:172:GLN:NE2	1:B:263:ARG:HD2	2.31	0.45
1:B:473:GLN:O	1:B:477:GLU:HG3	2.17	0.45
1:B:181:GLU:O	1:B:185:SER:HB3	2.17	0.45
1:B:145:ARG:HD3	1:B:145:ARG:HA	1.62	0.45
1:B:390:LYS:NZ	6:B:924:HOH:O	2.47	0.45
1:B:226:VAL:O	1:B:273:LYS:HG2	2.17	0.44
1:B:710:GLN:NE2	1:B:714:ARG:HH21	2.14	0.44
1:B:139:LEU:HD22	1:B:156:MET:HB3	1.98	0.44
1:B:230:VAL:HG22	1:B:270:LEU:HD22	1.98	0.44
1:B:450:GLU:HG3	6:B:955:HOH:O	2.17	0.44
1:B:464:ARG:CZ	1:B:544:GLU:HG2	2.47	0.44

*Continued on next page...*

*Continued from previous page...*

Atom-1	Atom-2	Interatomic distance (Å)	Clash overlap (Å)
1:A:608:ARG:NH1	1:A:685:GLU:OE1	2.47	0.44
1:B:505:MET:HE1	1:B:560:LYS:CD	2.48	0.44
1:B:296:VAL:HG12	1:B:298:PHE:H	1.83	0.44
1:B:163:ASP:OD1	1:B:165:VAL:HG22	2.17	0.43
1:A:612:ILE:HA	1:A:657:LEU:O	2.18	0.43
1:A:513:TYR:HD1	1:A:563:ILE:HB	1.82	0.43
1:B:470:THR:CG2	1:B:476:LYS:HG2	2.49	0.43
1:A:673:LYS:HB3	1:A:673:LYS:HE3	1.76	0.43
1:B:386:LEU:HG	1:B:387:ILE:O	2.18	0.43
1:A:363:MET:HE3	1:A:363:MET:HB3	1.82	0.43
1:A:528:TYR:HB3	1:A:565:ALA:HB1	2.01	0.43
1:B:506:LYS:HD2	1:B:506:LYS:C	2.43	0.43
1:A:111:LYS:HG2	1:B:191:ALA:O	2.19	0.43
1:A:145:ARG:HB2	6:A:994:HOH:O	2.19	0.43
1:B:179:ASN:OD1	1:B:181:GLU:HG3	2.19	0.43
1:A:541:PHE:HB3	1:A:543:PHE:CE1	2.54	0.42
1:B:113:LEU:CD2	1:B:190:ILE:HD11	2.49	0.42
1:B:249:ASP:OD2	1:B:251:SER:OG	2.37	0.42
1:B:613:LYS:HB2	1:B:613:LYS:HE2	1.63	0.42
1:A:91:THR:O	1:A:93:THR:HG22	2.20	0.42
1:A:470:THR:O	1:A:476:LYS:HE3	2.20	0.42
1:A:592:GLU:CG	1:A:593:GLN:N	2.72	0.42
1:B:318:PRO:HD3	1:B:347:ARG:HD2	2.01	0.41
1:A:119:SER:O	1:B:415:LEU:N	2.36	0.41
1:A:693:ILE:HD11	1:A:701:PRO:HB3	2.02	0.41
1:B:229:LYS:HD2	1:B:248:SER:O	2.20	0.41
1:A:489:ALA:HB3	1:A:538:GLU:OE1	2.20	0.41
1:A:528:TYR:CD2	1:A:566:GLU:HG2	2.55	0.41
1:B:576:GLU:N	1:B:576:GLU:OE1	2.53	0.41
1:B:614:VAL:HG12	1:B:659:ILE:HD11	2.02	0.41
1:A:555:ARG:O	1:A:561:LYS:HD3	2.20	0.41
1:A:613:LYS:HG2	1:A:658:GLU:HG2	2.03	0.41
1:A:689:ASP:OD2	1:A:707:ARG:NH2	2.38	0.41
1:B:299:PRO:HB3	1:B:306:ARG:CZ	2.51	0.41
1:B:585:ALA:HA	1:B:588:ARG:CZ	2.51	0.41
1:B:172:GLN:HA	1:B:266:THR:O	2.21	0.41
1:B:248:SER:HB2	1:B:254:PHE:CB	2.51	0.41
1:B:239:ALA:O	1:B:240:ASP:HB2	2.20	0.40
1:B:301:PHE:CE2	1:B:306:ARG:HB2	2.55	0.40
1:A:628:LEU:HD23	1:A:629:GLU:N	2.37	0.40
1:A:251:SER:O	1:A:251:SER:OG	2.36	0.40

*Continued on next page...*

Continued from previous page...

Atom-1	Atom-2	Interatomic distance (Å)	Clash overlap (Å)
1:A:593:GLN:O	1:A:597:LEU:HB3	2.21	0.40
1:B:123:GLU:O	1:B:126:VAL:HG22	2.21	0.40
1:B:237:ALA:CA	1:B:238:GLU:HG3	2.50	0.40
1:A:189:THR:O	6:A:902:HOH:O	2.22	0.40
1:A:318:PRO:HD3	1:A:347:ARG:CD	2.51	0.40

All (3) symmetry-related close contacts are listed below. The label for Atom-2 includes the symmetry operator and encoded unit-cell translations to be applied.

Atom-1	Atom-2	Interatomic distance (Å)	Clash overlap (Å)
1:B:510:ARG:NH1	1:B:576:GLU:OE2[2_557]	1.40	0.80
1:A:203:GLN:NE2	1:B:472:GLU:OE2[4_558]	2.05	0.15
1:B:510:ARG:NH1	1:B:576:GLU:CD[2_557]	2.17	0.03

## 5.3 Torsion angles [i](#)

### 5.3.1 Protein backbone [i](#)

In the following table, the Percentiles column shows the percent Ramachandran outliers of the chain as a percentile score with respect to all X-ray entries followed by that with respect to entries of similar resolution.

The Analysed column shows the number of residues for which the backbone conformation was analysed, and the total number of residues.

Mol	Chain	Analysed	Favoured	Allowed	Outliers	Percentiles	
1	A	555/647 (86%)	535 (96%)	20 (4%)	0	100	100
1	B	590/647 (91%)	568 (96%)	22 (4%)	0	100	100
All	All	1145/1294 (88%)	1103 (96%)	42 (4%)	0	100	100

There are no Ramachandran outliers to report.

### 5.3.2 Protein sidechains [i](#)

In the following table, the Percentiles column shows the percent sidechain outliers of the chain as a percentile score with respect to all X-ray entries followed by that with respect to entries of similar resolution.

The Analysed column shows the number of residues for which the sidechain conformation was

analysed, and the total number of residues.

Mol	Chain	Analysed	Rotameric	Outliers	Percentiles	
1	A	502/569 (88%)	500 (100%)	2 (0%)	84	92
1	B	535/569 (94%)	534 (100%)	1 (0%)	87	94
All	All	1037/1138 (91%)	1034 (100%)	3 (0%)	86	93

All (3) residues with a non-rotameric sidechain are listed below:

Mol	Chain	Res	Type
1	A	530	GLU
1	A	591	SER
1	B	701	PRO

Sometimes sidechains can be flipped to improve hydrogen bonding and reduce clashes. All (13) such sidechains are listed below:

Mol	Chain	Res	Type
1	A	106	GLN
1	A	144	HIS
1	A	435	GLN
1	A	553	HIS
1	A	670	HIS
1	B	97	GLN
1	B	264	GLN
1	B	294	ASN
1	B	495	GLN
1	B	580	GLN
1	B	635	HIS
1	B	676	ASN
1	B	710	GLN

### 5.3.3 RNA [i](#)

There are no RNA molecules in this entry.

## 5.4 Non-standard residues in protein, DNA, RNA chains [i](#)

There are no non-standard protein/DNA/RNA residues in this entry.

## 5.5 Carbohydrates [i](#)

There are no oligosaccharides in this entry.

## 5.6 Ligand geometry [i](#)

Of 9 ligands modelled in this entry, 6 are monoatomic - leaving 3 for Mogul analysis.

In the following table, the Counts columns list the number of bonds (or angles) for which Mogul statistics could be retrieved, the number of bonds (or angles) that are observed in the model and the number of bonds (or angles) that are defined in the Chemical Component Dictionary. The Link column lists molecule types, if any, to which the group is linked. The Z score for a bond length (or angle) is the number of standard deviations the observed value is removed from the expected value. A bond length (or angle) with  $|Z| > 2$  is considered an outlier worth inspection. RMSZ is the root-mean-square of all Z scores of the bond lengths (or angles).

Mol	Type	Chain	Res	Link	Bond lengths			Bond angles		
					Counts	RMSZ	# Z  > 2	Counts	RMSZ	# Z  > 2
5	05M	A	805	-	38,38,45	1.72	10 (26%)	50,52,60	2.19	7 (14%)
2	ANP	A	801	3	33,33,33	1.34	7 (21%)	45,52,52	1.63	7 (15%)
2	ANP	B	801	3	33,33,33	0.94	2 (6%)	45,52,52	0.86	3 (6%)

In the following table, the Chirals column lists the number of chiral outliers, the number of chiral centers analysed, the number of these observed in the model and the number defined in the Chemical Component Dictionary. Similar counts are reported in the Torsion and Rings columns. '-' means no outliers of that kind were identified.

Mol	Type	Chain	Res	Link	Chirals	Torsions	Rings
5	05M	A	805	-	-	3/25/49/60	0/4/4/4
2	ANP	A	801	3	-	2/18/38/38	0/3/3/3
2	ANP	B	801	3	-	1/18/38/38	0/3/3/3

All (19) bond length outliers are listed below:

Mol	Chain	Res	Type	Atoms	Z	Observed(Å)	Ideal(Å)
5	A	805	05M	P22-C23	4.22	1.86	1.79
5	A	805	05M	P22-C24	3.67	1.85	1.79
5	A	805	05M	P22-C25	3.09	1.84	1.79
2	A	801	ANP	C4-N3	3.06	1.40	1.34
5	A	805	05M	C06-C05	2.98	1.40	1.35
5	A	805	05M	C03-C04	-2.90	1.40	1.48
5	A	805	05M	C02-C01	-2.81	1.40	1.48
5	A	805	05M	P22-C21	2.73	1.86	1.79

*Continued on next page...*

Continued from previous page...

Mol	Chain	Res	Type	Atoms	Z	Observed(Å)	Ideal(Å)
2	A	801	ANP	C5-N7	2.67	1.44	1.39
5	A	805	05M	O08-C03	2.66	1.43	1.36
2	A	801	ANP	PG-N3B	2.65	1.70	1.63
2	A	801	ANP	PG-O1G	2.64	1.50	1.46
2	B	801	ANP	PG-N3B	2.62	1.70	1.63
2	A	801	ANP	C5-C4	-2.43	1.34	1.39
2	B	801	ANP	PG-O1G	2.36	1.49	1.46
2	A	801	ANP	PB-O1B	2.10	1.49	1.46
5	A	805	05M	C06-C01	-2.09	1.40	1.46
2	A	801	ANP	PB-N3B	2.09	1.68	1.63
5	A	805	05M	O07-C02	2.04	1.41	1.36

All (17) bond angle outliers are listed below:

Mol	Chain	Res	Type	Atoms	Z	Observed(°)	Ideal(°)
5	A	805	05M	C23-P22-C24	8.97	124.67	109.42
5	A	805	05M	C25-P22-C24	-7.01	97.49	109.42
2	A	801	ANP	C5-C4-N9	6.03	112.38	105.81
5	A	805	05M	C10-C05-C06	-5.04	116.17	124.45
5	A	805	05M	C12-C06-C01	4.40	124.23	116.92
2	A	801	ANP	C4-N9-C8	-4.32	101.20	105.74
5	A	805	05M	C25-P22-C23	-3.97	102.66	109.42
5	A	805	05M	C06-C05-C04	3.49	121.92	119.17
2	A	801	ANP	C6-C5-C4	3.44	121.88	117.18
2	A	801	ANP	O1B-PB-N3B	-3.15	107.14	111.77
2	A	801	ANP	C4-C5-N7	-3.10	107.04	110.58
5	A	805	05M	C13-C12-C06	2.60	118.52	113.10
2	B	801	ANP	O2B-PB-O3A	2.53	113.07	104.64
2	A	801	ANP	C5-C4-N3	-2.42	123.39	126.72
2	B	801	ANP	O1B-PB-N3B	-2.33	108.33	111.77
2	B	801	ANP	C5-C4-N9	2.20	108.20	105.81
2	A	801	ANP	O2G-PG-O1G	-2.01	108.41	113.45

There are no chirality outliers.

All (6) torsion outliers are listed below:

Mol	Chain	Res	Type	Atoms
2	A	801	ANP	PB-N3B-PG-O1G
2	A	801	ANP	PA-O3A-PB-O2B
2	B	801	ANP	PB-N3B-PG-O1G
5	A	805	05M	C01-C06-C12-C13
5	A	805	05M	C05-C06-C12-C13

Continued on next page...

*Continued from previous page...*

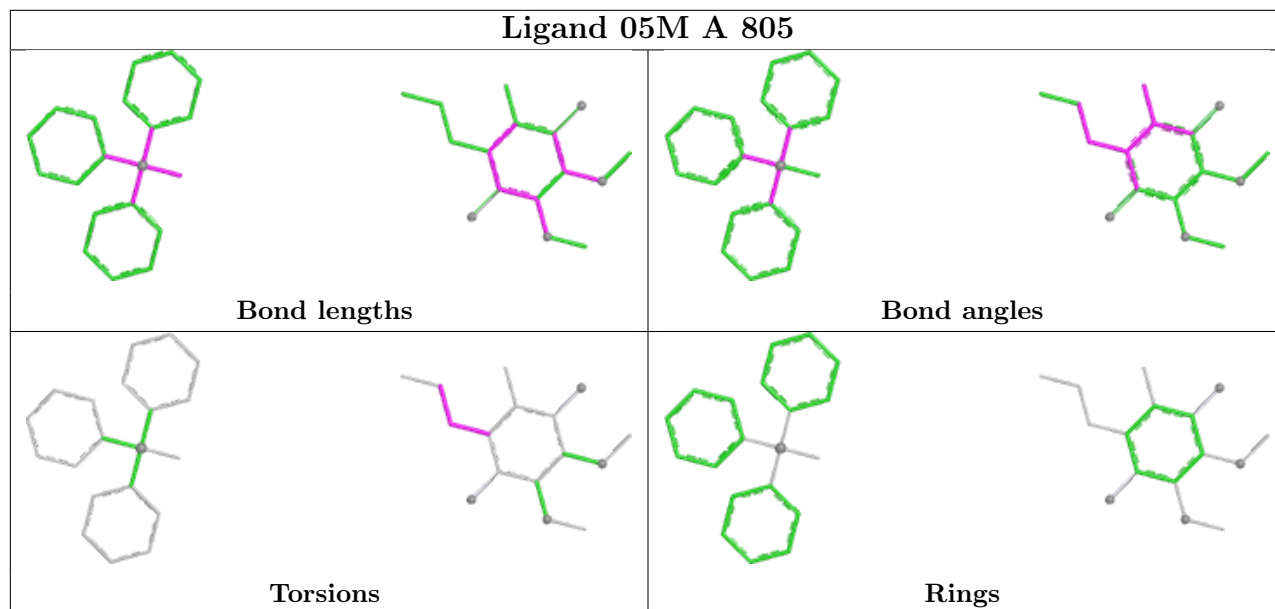
Mol	Chain	Res	Type	Atoms
5	A	805	05M	C06-C12-C13-C14

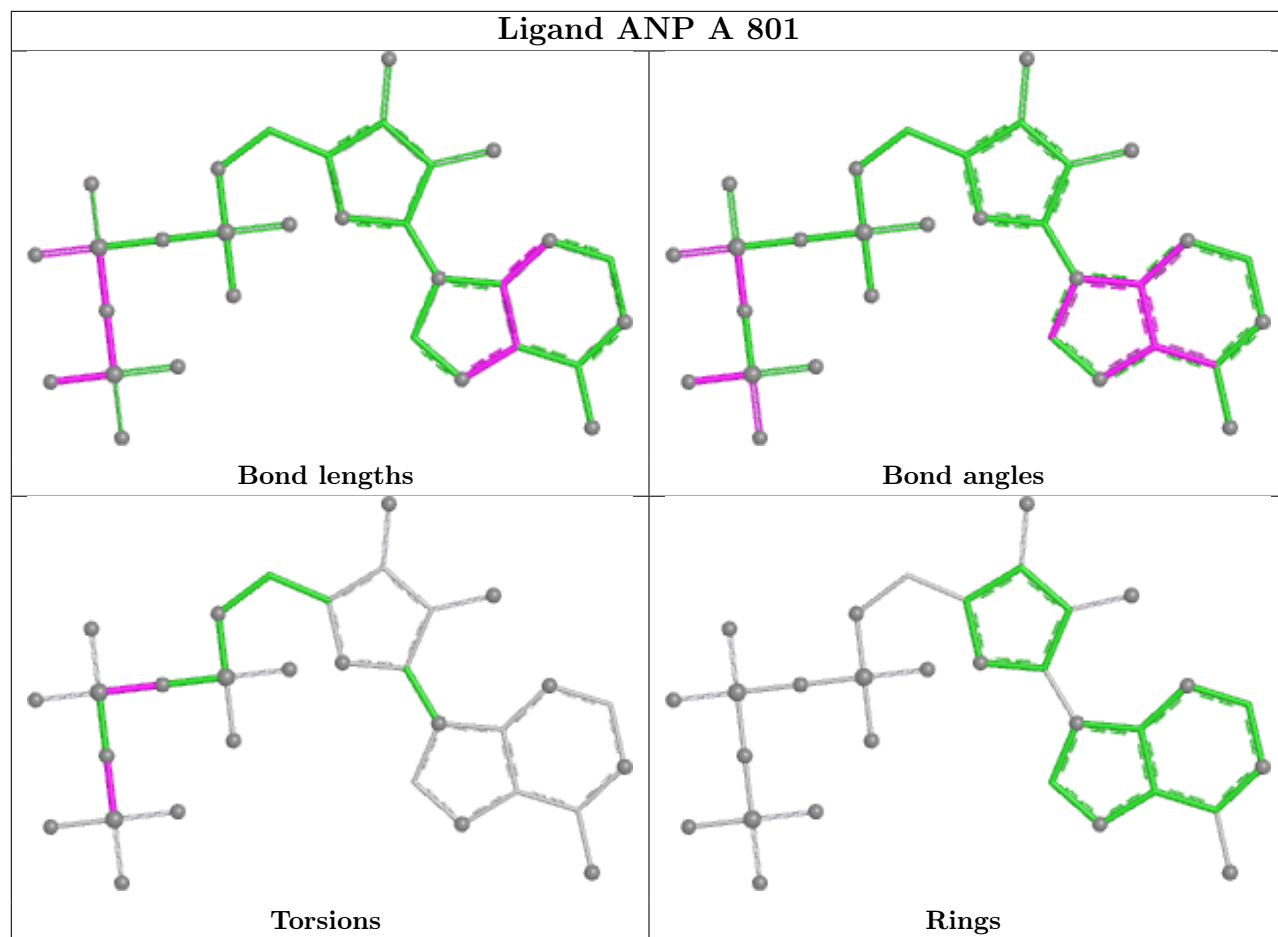
There are no ring outliers.

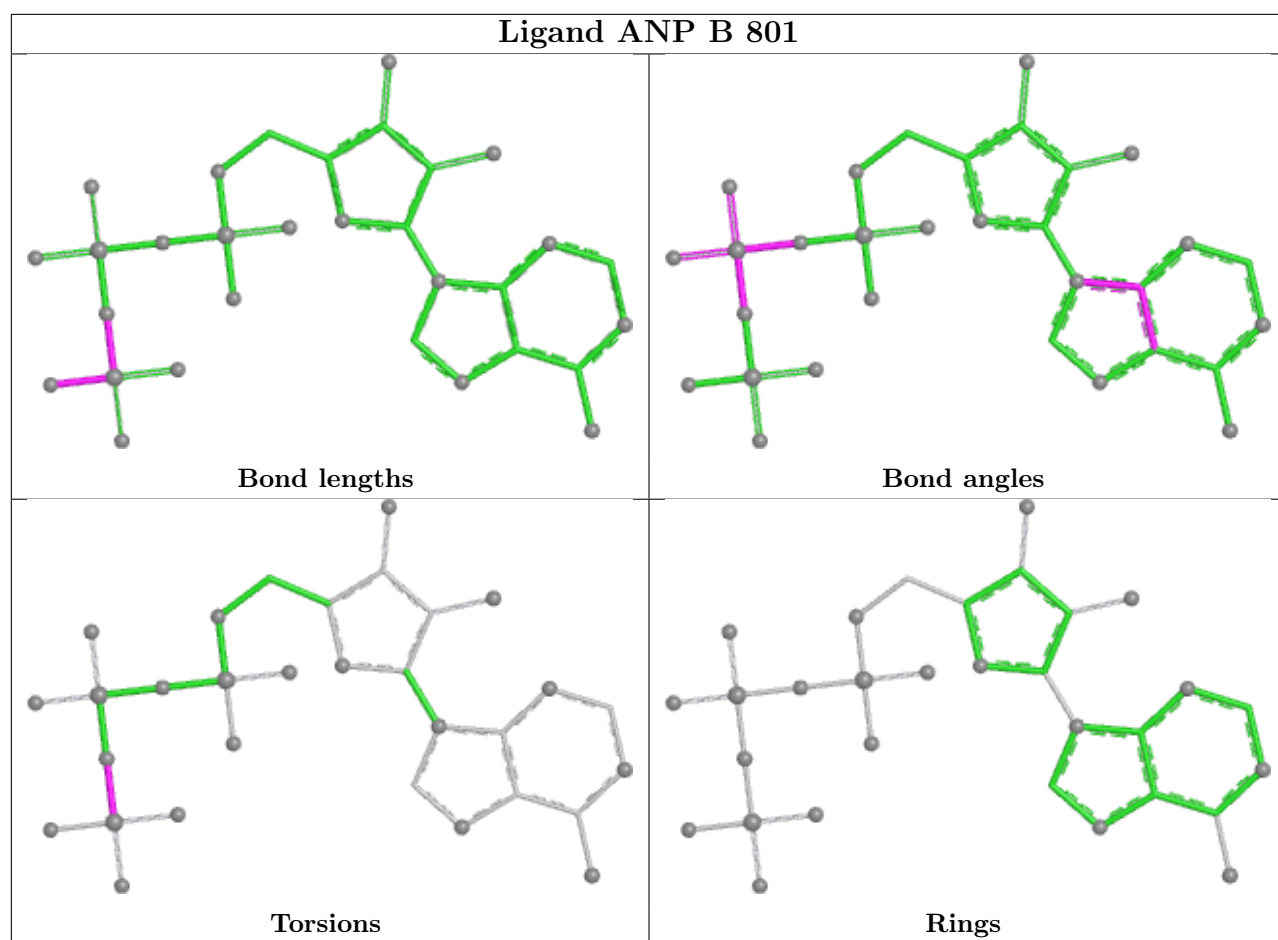
1 monomer is involved in 6 short contacts:

Mol	Chain	Res	Type	Clashes	Symm-Clashes
5	A	805	05M	6	0

The following is a two-dimensional graphical depiction of Mogul quality analysis of bond lengths, bond angles, torsion angles, and ring geometry for all instances of the Ligand of Interest. In addition, ligands with molecular weight > 250 and outliers as shown on the validation Tables will also be included. For torsion angles, if less than 5% of the Mogul distribution of torsion angles is within 10 degrees of the torsion angle in question, then that torsion angle is considered an outlier. Any bond that is central to one or more torsion angles identified as an outlier by Mogul will be highlighted in the graph. For rings, the root-mean-square deviation (RMSD) between the ring in question and similar rings identified by Mogul is calculated over all ring torsion angles. If the average RMSD is greater than 60 degrees and the minimal RMSD between the ring in question and any Mogul-identified rings is also greater than 60 degrees, then that ring is considered an outlier. The outliers are highlighted in purple. The color gray indicates Mogul did not find sufficient equivalents in the CSD to analyse the geometry.







## 5.7 Other polymers [i](#)

There are no such residues in this entry.

## 5.8 Polymer linkage issues [i](#)

There are no chain breaks in this entry.

## 6 Fit of model and data

### 6.1 Protein, DNA and RNA chains

In the following table, the column labelled ‘#RSRZ > 2’ contains the number (and percentage) of RSRZ outliers, followed by percent RSRZ outliers for the chain as percentile scores relative to all X-ray entries and entries of similar resolution. The OWAB column contains the minimum, median, 95<sup>th</sup> percentile and maximum values of the occupancy-weighted average B-factor per residue. The column labelled ‘Q < 0.9’ lists the number of (and percentage) of residues with an average occupancy less than 0.9.

Mol	Chain	Analysed	<RSRZ>	#RSRZ>2	OWAB(Å <sup>2</sup> )	Q<0.9
1	A	574/647 (88%)	0.01	13 (2%) 61 63	27, 62, 118, 160	1 (0%)
1	B	599/647 (92%)	-0.08	11 (1%) 67 69	24, 59, 101, 138	3 (0%)
All	All	1173/1294 (90%)	-0.04	24 (2%) 65 66	24, 60, 114, 160	4 (0%)

All (24) RSRZ outliers are listed below:

Mol	Chain	Res	Type	RSRZ
1	A	589	LEU	4.0
1	B	639	THR	3.2
1	A	324	TRP	3.2
1	A	239	ALA	3.0
1	B	389	THR	3.0
1	B	578	LYS	2.9
1	B	387	ILE	2.9
1	A	532	MET	2.8
1	B	419	LEU	2.7
1	A	149	ALA	2.6
1	B	579	PHE	2.5
1	A	100	PHE	2.5
1	A	615	THR	2.4
1	A	591	SER	2.4
1	A	672	LEU	2.4
1	B	369	ASP	2.3
1	A	558	ASP	2.2
1	B	431	ASP	2.2
1	A	697	LEU	2.2
1	B	420	LEU	2.1
1	A	508	GLY	2.1
1	B	238	GLU	2.0
1	A	531	ALA	2.0
1	B	654	GLN	2.0

## 6.2 Non-standard residues in protein, DNA, RNA chains [i](#)

There are no non-standard protein/DNA/RNA residues in this entry.

## 6.3 Carbohydrates [i](#)

There are no oligosaccharides in this entry.

## 6.4 Ligands [i](#)

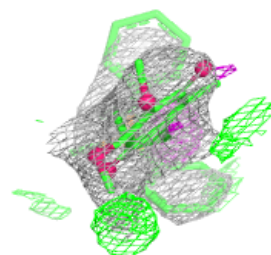
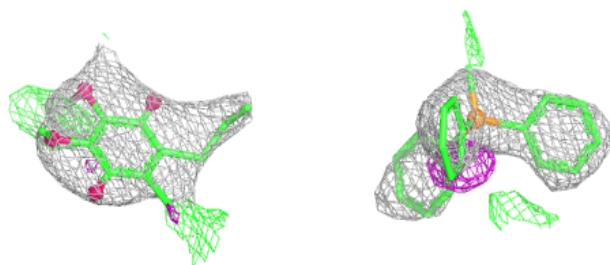
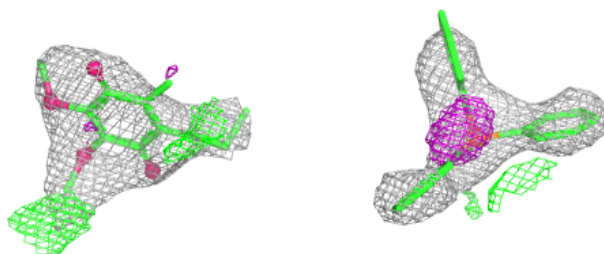
In the following table, the Atoms column lists the number of modelled atoms in the group and the number defined in the chemical component dictionary. The B-factors column lists the minimum, median, 95<sup>th</sup> percentile and maximum values of B factors of atoms in the group. The column labelled 'Q< 0.9' lists the number of atoms with occupancy less than 0.9.

Mol	Type	Chain	Res	Atoms	RSCC	RSR	B-factors( $\text{\AA}^2$ )	Q<0.9
4	CO	A	804	1/1	-0.51	0.23	292,292,292,292	0
4	CO	B	804	1/1	-0.29	0.24	239,239,239,239	0
4	CO	A	803	1/1	0.34	0.26	200,200,200,200	0
5	05M	A	805	36/42	0.80	0.18	80,96,112,114	0
4	CO	B	803	1/1	0.94	0.06	99,99,99,99	0
2	ANP	B	801	31/31	0.98	0.05	40,50,67,80	0
3	MG	B	802	1/1	0.99	0.03	60,60,60,60	0
2	ANP	A	801	31/31	0.99	0.04	22,34,40,44	0
3	MG	A	802	1/1	1.00	0.01	25,25,25,25	0

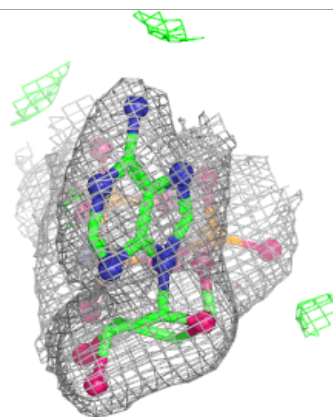
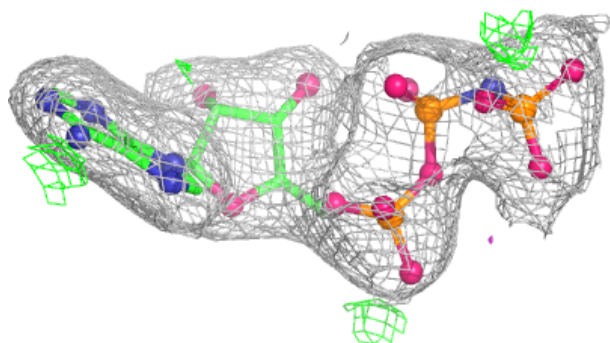
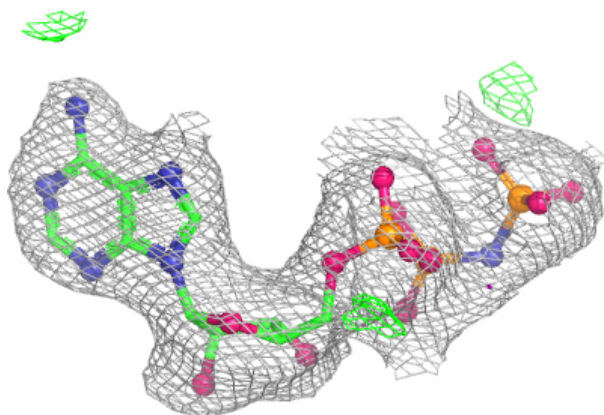
The following is a graphical depiction of the model fit to experimental electron density of all instances of the Ligand of Interest. In addition, ligands with molecular weight > 250 and outliers as shown on the geometry validation Tables will also be included. Each fit is shown from different orientation to approximate a three-dimensional view.

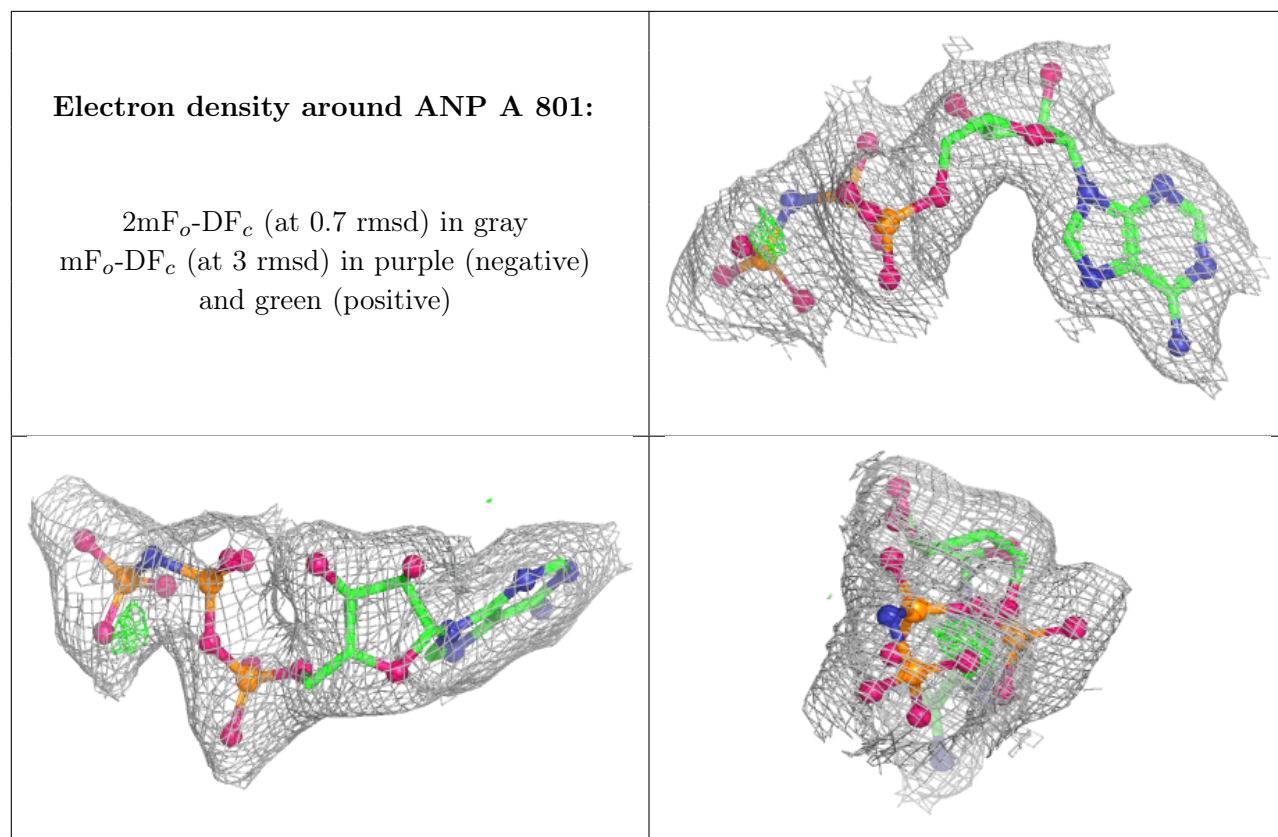
**Electron density around 05M A 805:**

$2mF_o-DF_c$  (at 0.7 rmsd) in gray  
 $mF_o-DF_c$  (at 3 rmsd) in purple (negative)  
and green (positive)

**Electron density around ANP B 801:**

$2mF_o-DF_c$  (at 0.7 rmsd) in gray  
 $mF_o-DF_c$  (at 3 rmsd) in purple (negative)  
and green (positive)





## 6.5 Other polymers [i](#)

There are no such residues in this entry.