



Full wwPDB EM Validation Report ⓘ

Mar 24, 2026 – 06:09 AM UTC

PDB ID : 8EXT / pdb_00008ext
EMDB ID : EMD-28662
Title : Cryo-EM structure of *S. aureus* BlaR1 F284A mutant in complex with ampicillin
Authors : Alexander, J.A.N.; Hu, J.; Worrall, L.J.; Strynadka, N.C.J.
Deposited on : 2022-10-25
Resolution : 4.60 Å(reported)

This is a Full wwPDB EM Validation Report for a publicly released PDB entry.

We welcome your comments at validation@mail.wwpdb.org

A user guide is available at

<https://www.wwpdb.org/validation/2017/EMValidationReportHelp>

with specific help available everywhere you see the ⓘ symbol.

The types of validation reports are described at

<http://www.wwpdb.org/validation/2017/FAQs#types>.

The following versions of software and data (see [references ⓘ](#)) were used in the production of this report:

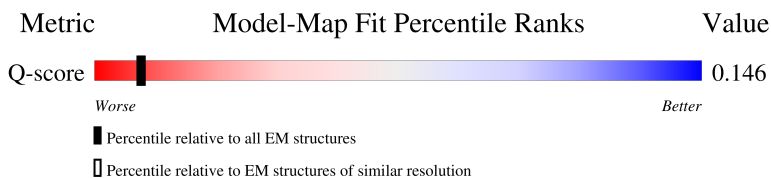
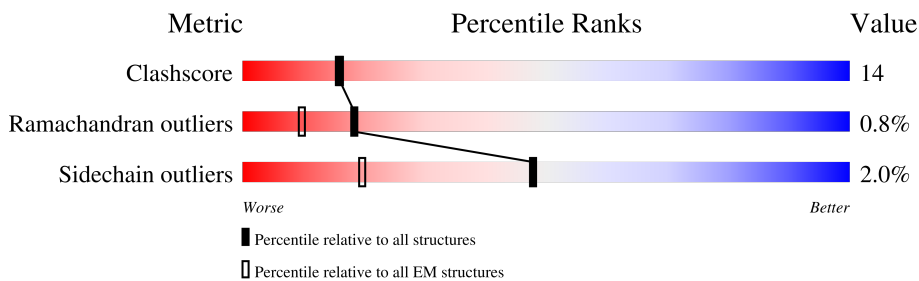
EMDB validation analysis : 0.0.1.dev132
MolProbity : 4-5-2 with Phenix2.0
Percentile statistics : 20250101.v01 (using entries in the PDB archive January 1st 2025)
EM percentile statistics : 202505.v01 (Using data in the EMDB archive up until May 2025)
MapQ : 1.9.13
Ideal geometry (proteins) : Engh & Huber (2001)
Ideal geometry (DNA, RNA) : Parkinson et al. (1996)
Validation Pipeline (wwPDB-VP) : 2.49

1 Overall quality at a glance

The following experimental techniques were used to determine the structure:
ELECTRON MICROSCOPY

The reported resolution of this entry is 4.60 Å.

Percentile scores (ranging between 0-100) for global validation metrics of the entry are shown in the following graphic. The table shows the number of entries on which the scores are based.



Metric	Whole archive (#Entries)	EM structures (#Entries)	Similar EM resolution (#Entries, resolution range(Å))
Clashscore	229148	23984	-
Ramachandran outliers	224038	23583	-
Sidechain outliers	223484	23102	-
Q-score	-	25397	2407 (4.10 - 5.10)

The table below summarises the geometric issues observed across the polymeric chains and their fit to the map. The red, orange, yellow and green segments of the bar indicate the fraction of residues that contain outliers for ≥ 3 , 2, 1 and 0 types of geometric quality criteria respectively. A grey segment represents the fraction of residues that are not modelled. The numeric value for each fraction is indicated below the corresponding segment, with a dot representing fractions $\leq 5\%$. The upper red bar (where present) indicates the fraction of residues that have poor fit to the EM map (all-atom inclusion $< 40\%$). The numeric value is given above the bar.

Mol	Chain	Length	Quality of chain
1	A	602	 32% 65% 18% • 12%
1	B	602	 32% 65% 18% • 12%

2 Entry composition i

There are 2 unique types of molecules in this entry. The entry contains 8846 atoms, of which 0 are hydrogens and 0 are deuteriums.

In the tables below, the AltConf column contains the number of residues with at least one atom in alternate conformation and the Trace column contains the number of residues modelled with at most 2 atoms.

- Molecule 1 is a protein called Beta-lactam sensor/signal transducer BlaR1.

Mol	Chain	Residues	Atoms					AltConf	Trace
			Total	C	N	O	S		
1	A	531	4422	2903	730	770	19	0	0
1	B	531	4422	2903	730	770	19	0	0

There are 36 discrepancies between the modelled and reference sequences:

Chain	Residue	Modelled	Actual	Comment	Reference
A	284	ALA	PHE	engineered mutation	UNP Q00419
A	586	GLU	-	expression tag	UNP Q00419
A	587	LEU	-	expression tag	UNP Q00419
A	588	ALA	-	expression tag	UNP Q00419
A	589	LEU	-	expression tag	UNP Q00419
A	590	VAL	-	expression tag	UNP Q00419
A	591	PRO	-	expression tag	UNP Q00419
A	592	ARG	-	expression tag	UNP Q00419
A	593	GLY	-	expression tag	UNP Q00419
A	594	SER	-	expression tag	UNP Q00419
A	595	SER	-	expression tag	UNP Q00419
A	596	ALA	-	expression tag	UNP Q00419
A	597	HIS	-	expression tag	UNP Q00419
A	598	HIS	-	expression tag	UNP Q00419
A	599	HIS	-	expression tag	UNP Q00419
A	600	HIS	-	expression tag	UNP Q00419
A	601	HIS	-	expression tag	UNP Q00419
A	602	HIS	-	expression tag	UNP Q00419
B	284	ALA	PHE	engineered mutation	UNP Q00419
B	586	GLU	-	expression tag	UNP Q00419
B	587	LEU	-	expression tag	UNP Q00419
B	588	ALA	-	expression tag	UNP Q00419
B	589	LEU	-	expression tag	UNP Q00419
B	590	VAL	-	expression tag	UNP Q00419
B	591	PRO	-	expression tag	UNP Q00419
B	592	ARG	-	expression tag	UNP Q00419

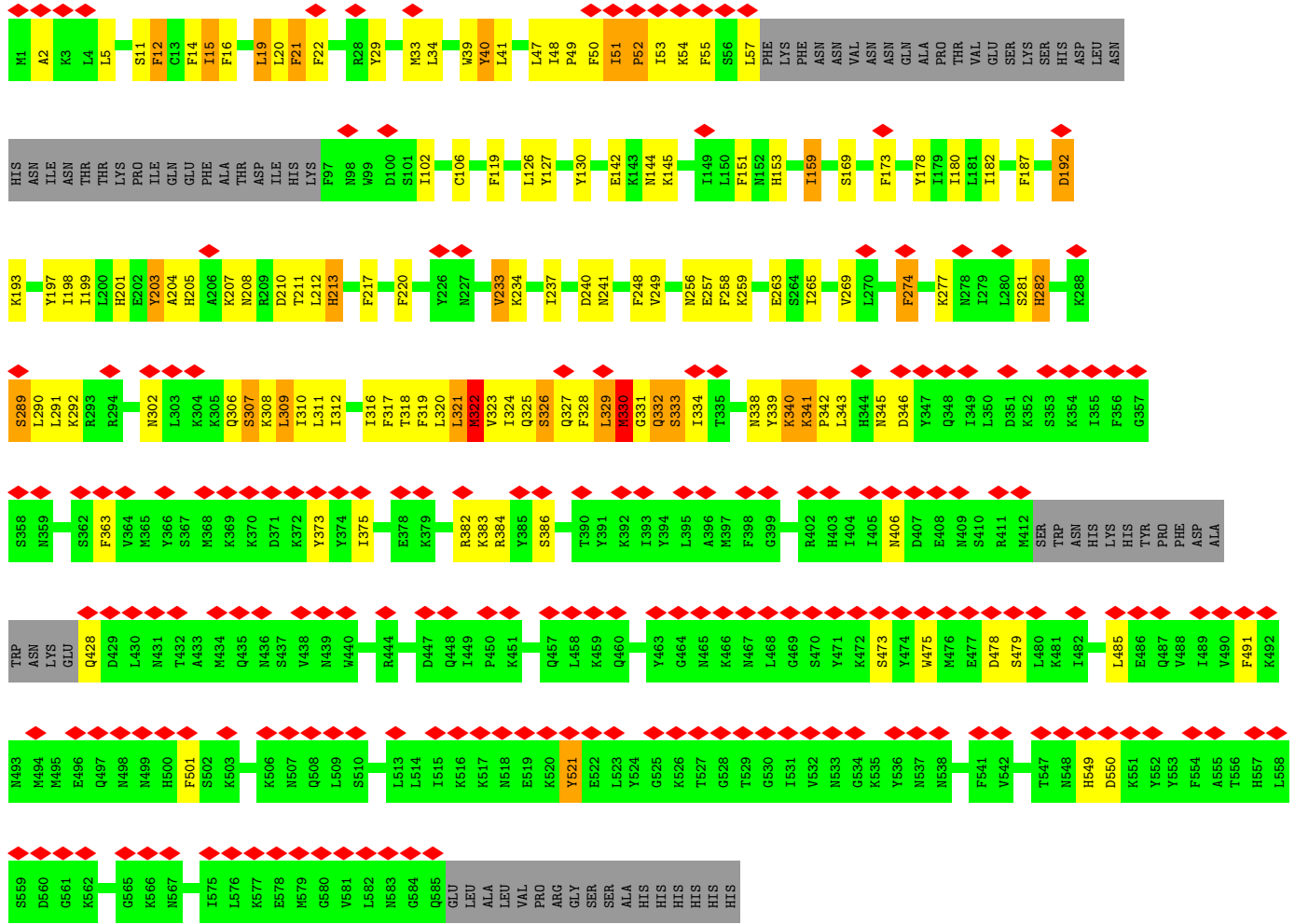
Continued on next page...

Continued from previous page...

Chain	Residue	Modelled	Actual	Comment	Reference
B	593	GLY	-	expression tag	UNP Q00419
B	594	SER	-	expression tag	UNP Q00419
B	595	SER	-	expression tag	UNP Q00419
B	596	ALA	-	expression tag	UNP Q00419
B	597	HIS	-	expression tag	UNP Q00419
B	598	HIS	-	expression tag	UNP Q00419
B	599	HIS	-	expression tag	UNP Q00419
B	600	HIS	-	expression tag	UNP Q00419
B	601	HIS	-	expression tag	UNP Q00419
B	602	HIS	-	expression tag	UNP Q00419

- Molecule 2 is ZINC ION (CCD ID: ZN) (formula: Zn).

Mol	Chain	Residues	Atoms		AltConf
2	A	1	Total	Zn	0
			1	1	
2	B	1	Total	Zn	0
			1	1	



4 Experimental information

Property	Value	Source
EM reconstruction method	SINGLE PARTICLE	Depositor
Imposed symmetry	POINT, C2	Depositor
Number of particles used	216832	Depositor
Resolution determination method	FSC 0.143 CUT-OFF	Depositor
CTF correction method	PHASE FLIPPING AND AMPLITUDE CORRECTION	Depositor
Microscope	FEI TITAN KRIOS	Depositor
Voltage (kV)	300	Depositor
Electron dose ($e^-/\text{\AA}^2$)	60	Depositor
Minimum defocus (nm)	1500	Depositor
Maximum defocus (nm)	3500	Depositor
Magnification	Not provided	
Image detector	GATAN K3 BIOQUANTUM (6k x 4k)	Depositor
Maximum map value	0.078	Depositor
Minimum map value	-0.043	Depositor
Average map value	0.000	Depositor
Map value standard deviation	0.003	Depositor
Recommended contour level	0.013	Depositor
Map size (\AA)	213.00002, 213.00002, 213.00002	wwPDB
Map dimensions	200, 200, 200	wwPDB
Map angles ($^\circ$)	90.0, 90.0, 90.0	wwPDB
Pixel spacing (\AA)	1.065, 1.065, 1.065	Depositor

5 Model quality i

5.1 Standard geometry i

Bond lengths and bond angles in the following residue types are not validated in this section:
ZN

The Z score for a bond length (or angle) is the number of standard deviations the observed value is removed from the expected value. A bond length (or angle) with $|Z| > 5$ is considered an outlier worth inspection. RMSZ is the root-mean-square of all Z scores of the bond lengths (or angles).

Mol	Chain	Bond lengths		Bond angles	
		RMSZ	# $ Z > 5$	RMSZ	# $ Z > 5$
1	A	1.54	39/4523 (0.9%)	1.46	57/6086 (0.9%)
1	B	1.54	39/4523 (0.9%)	1.46	57/6086 (0.9%)
All	All	1.54	78/9046 (0.9%)	1.46	114/12172 (0.9%)

All (78) bond length outliers are listed below:

Mol	Chain	Res	Type	Atoms	Z	Observed(Å)	Ideal(Å)
1	A	282	HIS	CB-CG	-11.57	1.33	1.50
1	B	282	HIS	CB-CG	-11.57	1.33	1.50
1	A	153	HIS	CB-CG	-10.54	1.35	1.50
1	B	153	HIS	CB-CG	-10.54	1.35	1.50
1	A	220	PHE	CB-CG	-8.27	1.31	1.50
1	B	220	PHE	CB-CG	-8.26	1.31	1.50
1	A	178	TYR	CB-CG	-7.48	1.35	1.51
1	B	178	TYR	CB-CG	-7.48	1.35	1.51
1	A	173	PHE	CB-CG	7.38	1.67	1.50
1	B	173	PHE	CB-CG	7.38	1.67	1.50
1	B	178	TYR	CA-C	-7.26	1.45	1.53
1	A	178	TYR	CA-C	-7.21	1.45	1.53
1	A	248	PHE	CB-CG	-7.19	1.34	1.50
1	B	248	PHE	CB-CG	-7.19	1.34	1.50
1	A	248	PHE	CA-C	-7.12	1.43	1.52
1	B	248	PHE	CA-C	-7.12	1.43	1.52
1	A	16	PHE	CB-CG	-6.75	1.35	1.50
1	B	16	PHE	CB-CG	-6.75	1.35	1.50
1	A	199	ILE	CA-C	-6.62	1.44	1.52
1	B	199	ILE	CA-C	-6.62	1.44	1.52
1	A	201	HIS	CB-CG	-6.46	1.41	1.50
1	B	201	HIS	CB-CG	-6.43	1.41	1.50
1	A	274	PHE	CA-C	-6.34	1.46	1.53
1	B	274	PHE	CA-C	-6.27	1.46	1.53

Continued on next page...

Continued from previous page...

Mol	Chain	Res	Type	Atoms	Z	Observed(Å)	Ideal(Å)
1	A	21	PHE	CB-CG	-6.18	1.36	1.50
1	B	21	PHE	CB-CG	-6.18	1.36	1.50
1	A	40	TYR	CB-CG	-6.15	1.38	1.51
1	B	40	TYR	CB-CG	-6.15	1.38	1.51
1	A	19	LEU	CA-C	-6.09	1.44	1.52
1	B	19	LEU	CA-C	-6.09	1.44	1.52
1	B	249	VAL	N-CA	-5.96	1.39	1.46
1	A	249	VAL	N-CA	-5.96	1.39	1.46
1	A	274	PHE	CB-CG	-5.94	1.36	1.50
1	B	274	PHE	CB-CG	-5.94	1.36	1.50
1	A	39	TRP	NE1-CE2	-5.88	1.30	1.37
1	A	16	PHE	N-CA	-5.85	1.39	1.46
1	B	16	PHE	N-CA	-5.85	1.39	1.46
1	B	39	TRP	NE1-CE2	-5.81	1.31	1.37
1	A	213	HIS	CB-CG	-5.81	1.42	1.50
1	B	213	HIS	CB-CG	-5.81	1.42	1.50
1	A	15	ILE	C-N	-5.78	1.26	1.33
1	B	15	ILE	C-N	-5.78	1.26	1.33
1	A	40	TYR	CA-C	-5.73	1.45	1.52
1	B	40	TYR	CA-C	-5.73	1.45	1.52
1	A	20	LEU	CA-C	-5.72	1.45	1.52
1	B	20	LEU	CA-C	-5.72	1.45	1.52
1	A	233	VAL	N-CA	-5.71	1.39	1.46
1	B	233	VAL	N-CA	-5.71	1.39	1.46
1	A	20	LEU	N-CA	-5.71	1.39	1.46
1	B	20	LEU	N-CA	-5.71	1.39	1.46
1	A	187	PHE	CB-CG	-5.66	1.37	1.50
1	B	187	PHE	CB-CG	-5.66	1.37	1.50
1	A	217	PHE	CA-C	-5.61	1.45	1.52
1	B	217	PHE	CA-C	-5.61	1.45	1.52
1	A	12	PHE	N-CA	-5.47	1.39	1.46
1	B	12	PHE	N-CA	-5.47	1.39	1.46
1	A	198	ILE	CA-C	-5.41	1.46	1.52
1	B	198	ILE	CA-C	-5.38	1.46	1.52
1	A	237	ILE	CA-C	-5.32	1.46	1.52
1	B	237	ILE	CA-C	-5.32	1.46	1.52
1	A	501	PHE	CB-CG	-5.26	1.38	1.50
1	B	501	PHE	CB-CG	-5.26	1.38	1.50
1	A	237	ILE	N-CA	-5.22	1.40	1.46
1	B	237	ILE	N-CA	-5.22	1.40	1.46
1	A	282	HIS	CA-C	-5.19	1.46	1.52
1	B	282	HIS	CA-C	-5.19	1.46	1.52

Continued on next page...

Continued from previous page...

Mol	Chain	Res	Type	Atoms	Z	Observed(Å)	Ideal(Å)
1	A	153	HIS	CA-CB	-5.18	1.46	1.53
1	B	153	HIS	CA-CB	-5.18	1.46	1.53
1	A	249	VAL	CA-C	-5.14	1.46	1.52
1	B	249	VAL	CA-C	-5.14	1.46	1.52
1	A	220	PHE	CA-C	-5.12	1.46	1.52
1	B	220	PHE	CA-C	-5.12	1.46	1.52
1	A	178	TYR	C-N	-5.12	1.27	1.33
1	B	178	TYR	C-N	-5.12	1.27	1.33
1	A	29	TYR	CB-CG	-5.10	1.40	1.51
1	B	29	TYR	CB-CG	-5.10	1.40	1.51
1	A	11	SER	CA-C	-5.06	1.46	1.52
1	B	11	SER	CA-C	-5.06	1.46	1.52

All (114) bond angle outliers are listed below:

Mol	Chain	Res	Type	Atoms	Z	Observed(°)	Ideal(°)
1	A	346	ASP	O-C-N	22.75	148.72	122.79
1	B	346	ASP	O-C-N	22.75	148.72	122.79
1	A	51	ILE	O-C-N	13.11	136.04	121.10
1	B	51	ILE	O-C-N	13.08	136.01	121.10
1	A	51	ILE	CA-C-N	-12.99	103.60	119.84
1	A	51	ILE	C-N-CA	-12.99	103.60	119.84
1	B	51	ILE	CA-C-N	-12.96	103.64	119.84
1	B	51	ILE	C-N-CA	-12.96	103.64	119.84
1	A	346	ASP	CA-C-N	-12.26	93.99	122.19
1	A	346	ASP	C-N-CA	-12.26	93.99	122.19
1	B	346	ASP	CA-C-N	-12.26	93.99	122.19
1	B	346	ASP	C-N-CA	-12.26	93.99	122.19
1	A	333	SER	N-CA-C	-10.15	100.22	111.28
1	B	333	SER	N-CA-C	-10.11	100.26	111.28
1	A	173	PHE	CA-CB-CG	9.56	123.36	113.80
1	B	173	PHE	CA-CB-CG	9.56	123.36	113.80
1	A	386	SER	CA-C-N	9.16	128.91	119.56
1	A	386	SER	C-N-CA	9.16	128.91	119.56
1	B	386	SER	CA-C-N	9.16	128.91	119.56
1	B	386	SER	C-N-CA	9.16	128.91	119.56
1	A	151	PHE	CA-CB-CG	-8.51	105.29	113.80
1	A	40	TYR	N-CA-C	-8.51	102.09	111.36
1	B	40	TYR	N-CA-C	-8.48	102.11	111.36
1	B	151	PHE	CA-CB-CG	-8.48	105.32	113.80
1	A	521	TYR	N-CA-C	8.08	120.40	108.60
1	B	521	TYR	N-CA-C	8.08	120.40	108.60

Continued on next page...

Continued from previous page...

Mol	Chain	Res	Type	Atoms	Z	Observed(°)	Ideal(°)
1	A	479	SER	N-CA-C	7.53	120.44	111.33
1	B	479	SER	N-CA-C	7.50	120.41	111.33
1	A	289	SER	N-CA-C	7.21	117.78	108.34
1	B	289	SER	N-CA-C	7.21	117.78	108.34
1	A	309	LEU	CA-C-N	-6.97	111.78	120.56
1	A	309	LEU	C-N-CA	-6.97	111.78	120.56
1	B	309	LEU	CA-C-N	-6.96	111.80	120.56
1	B	309	LEU	C-N-CA	-6.96	111.80	120.56
1	A	333	SER	N-CA-CB	6.91	120.28	110.12
1	B	333	SER	N-CA-CB	6.91	120.27	110.12
1	A	375	ILE	N-CA-C	6.81	117.69	107.75
1	B	375	ILE	N-CA-C	6.81	117.69	107.75
1	A	21	PHE	CA-CB-CG	-6.68	107.11	113.80
1	A	302	ASN	N-CA-C	-6.68	97.66	108.41
1	B	302	ASN	N-CA-C	-6.68	97.66	108.41
1	B	21	PHE	CA-CB-CG	-6.64	107.16	113.80
1	B	257	GLU	N-CA-C	-6.45	105.95	113.88
1	A	265	ILE	N-CA-C	-6.43	104.25	110.42
1	B	265	ILE	N-CA-C	-6.43	104.25	110.42
1	A	257	GLU	N-CA-C	-6.42	105.98	113.88
1	A	205	HIS	CA-CB-CG	6.32	120.12	113.80
1	B	205	HIS	CA-CB-CG	6.32	120.12	113.80
1	A	363	PHE	N-CA-C	6.15	118.41	108.32
1	B	363	PHE	N-CA-C	6.15	118.41	108.32
1	A	119	PHE	CA-CB-CG	6.02	119.82	113.80
1	B	119	PHE	CA-CB-CG	6.02	119.82	113.80
1	A	22	PHE	CA-CB-CG	-5.97	107.83	113.80
1	B	22	PHE	CA-CB-CG	-5.97	107.83	113.80
1	A	130	TYR	N-CA-C	-5.87	104.79	111.07
1	B	130	TYR	N-CA-C	-5.87	104.79	111.07
1	B	220	PHE	CA-CB-CG	-5.78	108.02	113.80
1	A	220	PHE	CA-CB-CG	-5.77	108.03	113.80
1	A	322	MET	N-CA-C	-5.75	105.01	111.28
1	B	322	MET	N-CA-C	-5.73	105.04	111.28
1	A	269	VAL	CB-CA-C	5.70	116.85	111.44
1	B	269	VAL	CB-CA-C	5.70	116.85	111.44
1	B	491	PHE	CA-CB-CG	-5.58	108.22	113.80
1	A	491	PHE	CA-CB-CG	-5.56	108.24	113.80
1	A	282	HIS	CA-CB-CG	-5.51	108.29	113.80
1	B	282	HIS	CA-CB-CG	-5.51	108.29	113.80
1	A	274	PHE	CA-CB-CG	-5.39	108.41	113.80
1	B	274	PHE	CA-CB-CG	-5.39	108.41	113.80

Continued on next page...

Continued from previous page...

Mol	Chain	Res	Type	Atoms	Z	Observed(°)	Ideal(°)
1	A	169	SER	CA-C-N	5.36	125.37	119.90
1	A	169	SER	C-N-CA	5.36	125.37	119.90
1	B	169	SER	CA-C-N	5.36	125.37	119.90
1	B	169	SER	C-N-CA	5.36	125.37	119.90
1	A	277	LYS	CA-C-N	-5.34	113.80	122.34
1	A	277	LYS	C-N-CA	-5.34	113.80	122.34
1	B	277	LYS	CA-C-N	-5.34	113.80	122.34
1	B	277	LYS	C-N-CA	-5.34	113.80	122.34
1	A	48	ILE	N-CA-C	5.33	120.38	108.88
1	B	48	ILE	N-CA-C	5.32	120.38	108.88
1	A	182	ILE	CA-C-N	5.31	125.32	119.90
1	A	182	ILE	C-N-CA	5.31	125.32	119.90
1	B	182	ILE	CA-C-N	5.31	125.32	119.90
1	B	182	ILE	C-N-CA	5.31	125.32	119.90
1	A	258	PHE	CA-CB-CG	5.28	119.08	113.80
1	B	258	PHE	CA-CB-CG	5.28	119.08	113.80
1	A	406	ASN	CA-CB-CG	5.27	117.87	112.60
1	A	549	HIS	CA-CB-CG	5.26	119.06	113.80
1	B	549	HIS	CA-CB-CG	5.26	119.06	113.80
1	B	406	ASN	CA-CB-CG	5.26	117.86	112.60
1	A	192	ASP	CA-CB-CG	-5.21	107.39	112.60
1	B	192	ASP	CA-CB-CG	-5.21	107.39	112.60
1	A	159	ILE	CA-C-N	-5.20	115.76	122.99
1	A	159	ILE	C-N-CA	-5.20	115.76	122.99
1	B	478	ASP	CA-C-N	5.19	127.49	120.38
1	B	478	ASP	C-N-CA	5.19	127.49	120.38
1	B	159	ILE	CA-C-N	-5.17	115.81	122.99
1	B	159	ILE	C-N-CA	-5.17	115.81	122.99
1	A	478	ASP	CA-C-N	5.16	127.45	120.38
1	A	478	ASP	C-N-CA	5.16	127.45	120.38
1	A	203	TYR	CA-CB-CG	-5.08	104.76	113.90
1	A	306	GLN	CA-C-N	-5.08	113.66	120.82
1	A	306	GLN	C-N-CA	-5.08	113.66	120.82
1	B	203	TYR	CA-CB-CG	-5.08	104.76	113.90
1	B	306	GLN	CA-C-N	-5.08	113.66	120.82
1	B	306	GLN	C-N-CA	-5.08	113.66	120.82
1	B	550	ASP	CA-CB-CG	5.07	117.67	112.60
1	A	180	ILE	N-CA-CB	-5.05	105.10	111.46
1	B	180	ILE	N-CA-CB	-5.05	105.10	111.46
1	A	550	ASP	CA-CB-CG	5.04	117.64	112.60
1	A	142	GLU	N-CA-C	-5.04	107.20	113.55
1	B	142	GLU	N-CA-C	-5.04	107.20	113.55

Continued on next page...

Continued from previous page...

Mol	Chain	Res	Type	Atoms	Z	Observed(°)	Ideal(°)
1	A	473	SER	CA-C-N	5.02	128.71	120.63
1	A	473	SER	C-N-CA	5.02	128.71	120.63
1	B	473	SER	CA-C-N	5.02	128.71	120.63
1	B	473	SER	C-N-CA	5.02	128.71	120.63

There are no chirality outliers.

There are no planarity outliers.

5.2 Too-close contacts [i](#)

In the following table, the Non-H and H(model) columns list the number of non-hydrogen atoms and hydrogen atoms in the chain respectively. The H(added) column lists the number of hydrogen atoms added and optimized by MolProbity. The Clashes column lists the number of clashes within the asymmetric unit, whereas Symm-Clashes lists symmetry-related clashes.

Mol	Chain	Non-H	H(model)	H(added)	Clashes	Symm-Clashes
1	A	4422	0	4542	152	0
1	B	4422	0	4542	154	0
2	A	1	0	0	0	0
2	B	1	0	0	0	0
All	All	8846	0	9084	258	0

The all-atom clashscore is defined as the number of clashes found per 1000 atoms (including hydrogen atoms). The all-atom clashscore for this structure is 14.

All (258) close contacts within the same asymmetric unit are listed below, sorted by their clash magnitude.

Atom-1	Atom-2	Interatomic distance (Å)	Clash overlap (Å)
1:B:51:ILE:HG21	1:B:53:ILE:HD12	1.24	1.16
1:A:51:ILE:HG21	1:A:53:ILE:HD12	1.24	1.16
1:B:51:ILE:CG2	1:B:53:ILE:CG1	2.32	1.07
1:A:51:ILE:CG2	1:A:53:ILE:CG1	2.32	1.06
1:B:307:SER:HB2	1:B:309:LEU:HG	1.33	1.06
1:A:307:SER:HB2	1:A:309:LEU:HG	1.33	1.06
1:B:51:ILE:CG2	1:B:53:ILE:HD12	1.86	1.04
1:A:51:ILE:CG2	1:A:53:ILE:HD12	1.86	1.04
1:A:311:LEU:HD11	1:B:33:MET:O	1.57	1.03
1:A:33:MET:O	1:B:311:LEU:HD11	1.57	1.01
1:A:327:GLN:HG2	1:B:57:LEU:CD1	1.91	1.01
1:A:327:GLN:HG2	1:B:57:LEU:HD11	1.43	1.00

Continued on next page...

Continued from previous page...

Atom-1	Atom-2	Interatomic distance (Å)	Clash overlap (Å)
1:A:57:LEU:CD1	1:B:327:GLN:HG2	1.91	1.00
1:A:57:LEU:HD11	1:B:327:GLN:HG2	1.44	0.99
1:A:51:ILE:CG2	1:A:53:ILE:CD1	2.41	0.98
1:B:51:ILE:CG2	1:B:53:ILE:CD1	2.41	0.98
1:B:51:ILE:CG2	1:B:53:ILE:HG13	1.92	0.98
1:A:51:ILE:CG2	1:A:53:ILE:HG13	1.92	0.96
1:A:319:PHE:HA	1:B:41:LEU:HD21	1.51	0.90
1:A:41:LEU:HD21	1:B:319:PHE:HA	1.50	0.90
1:B:51:ILE:HG21	1:B:53:ILE:CD1	2.03	0.88
1:A:57:LEU:HD12	1:B:327:GLN:HB3	1.59	0.84
1:A:51:ILE:HG23	1:A:53:ILE:HG13	1.60	0.84
1:A:51:ILE:HG22	1:A:53:ILE:CG1	2.06	0.83
1:A:327:GLN:HB3	1:B:57:LEU:HD12	1.58	0.83
1:B:51:ILE:HG22	1:B:53:ILE:CG1	2.06	0.82
1:A:51:ILE:HG22	1:A:53:ILE:CB	2.09	0.82
1:B:51:ILE:HG23	1:B:53:ILE:HG13	1.60	0.82
1:A:33:MET:O	1:B:311:LEU:CD1	2.28	0.82
1:A:311:LEU:CD1	1:B:33:MET:O	2.28	0.81
1:B:51:ILE:HG22	1:B:53:ILE:CB	2.10	0.81
1:B:51:ILE:HG23	1:B:53:ILE:CD1	2.14	0.78
1:B:320:LEU:O	1:B:324:ILE:HG13	1.85	0.77
1:B:51:ILE:HG22	1:B:53:ILE:HG13	1.64	0.77
1:A:51:ILE:HG21	1:A:53:ILE:CD1	2.03	0.77
1:A:51:ILE:HG23	1:A:53:ILE:CD1	2.14	0.76
1:A:320:LEU:O	1:A:324:ILE:HG13	1.85	0.76
1:A:14:PHE:CD2	1:B:325:GLN:OE1	2.39	0.75
1:A:51:ILE:HG22	1:A:53:ILE:HG13	1.64	0.75
1:A:332:GLN:HG2	1:B:54:LYS:HA	1.69	0.74
1:A:325:GLN:OE1	1:B:14:PHE:CD2	2.40	0.74
1:A:54:LYS:HA	1:B:332:GLN:HG2	1.69	0.73
1:B:321:LEU:HD22	1:B:324:ILE:HD12	1.71	0.72
1:B:321:LEU:HA	1:B:324:ILE:HD12	1.70	0.72
1:A:321:LEU:HD22	1:A:324:ILE:HD12	1.71	0.72
1:A:327:GLN:CB	1:B:57:LEU:HD12	2.19	0.72
1:A:319:PHE:O	1:A:323:VAL:HG23	1.90	0.72
1:B:319:PHE:O	1:B:323:VAL:HG23	1.90	0.72
1:A:321:LEU:HA	1:A:324:ILE:HD12	1.70	0.71
1:B:2:ALA:CB	1:B:106:CYS:SG	2.79	0.71
1:A:57:LEU:HD12	1:B:327:GLN:CB	2.19	0.71
1:A:2:ALA:CB	1:A:106:CYS:SG	2.79	0.70
1:B:51:ILE:HG22	1:B:53:ILE:HB	1.75	0.69

Continued on next page...

Continued from previous page...

Atom-1	Atom-2	Interatomic distance (Å)	Clash overlap (Å)
1:A:51:ILE:HG22	1:A:53:ILE:HB	1.75	0.68
1:A:339:TYR:H	1:A:384:ARG:HG3	1.58	0.68
1:B:339:TYR:H	1:B:384:ARG:HG3	1.58	0.68
1:A:51:ILE:HG23	1:A:53:ILE:CG1	2.16	0.68
1:B:307:SER:HB2	1:B:309:LEU:CG	2.18	0.67
1:A:307:SER:HB2	1:A:309:LEU:CG	2.18	0.67
1:B:329:LEU:C	1:B:331:GLY:H	2.03	0.66
1:B:320:LEU:O	1:B:324:ILE:N	2.29	0.66
1:B:51:ILE:CG2	1:B:53:ILE:CB	2.72	0.66
1:A:320:LEU:O	1:A:324:ILE:N	2.29	0.66
1:A:19:LEU:HD21	1:B:318:THR:HG21	1.78	0.66
1:A:338:ASN:CG	1:A:384:ARG:H	2.04	0.66
1:A:329:LEU:C	1:A:331:GLY:H	2.03	0.65
1:A:50:PHE:O	1:A:52:PRO:N	2.30	0.64
1:A:319:PHE:CA	1:B:41:LEU:HD21	2.26	0.64
1:A:2:ALA:HB2	1:A:106:CYS:SG	2.37	0.64
1:B:2:ALA:HB2	1:B:106:CYS:SG	2.38	0.64
1:B:338:ASN:CG	1:B:384:ARG:H	2.04	0.64
1:A:51:ILE:CG2	1:A:53:ILE:CB	2.72	0.64
1:A:41:LEU:HD21	1:B:319:PHE:CA	2.26	0.64
1:A:318:THR:HG21	1:B:19:LEU:HD21	1.78	0.64
1:B:50:PHE:O	1:B:52:PRO:N	2.30	0.64
1:B:51:ILE:HG23	1:B:53:ILE:CG1	2.16	0.63
1:A:343:LEU:HD13	1:A:485:LEU:HD11	1.81	0.63
1:B:309:LEU:HD12	1:B:310:ILE:N	2.13	0.63
1:A:327:GLN:CG	1:B:57:LEU:CD1	2.74	0.63
1:B:343:LEU:HD13	1:B:485:LEU:HD11	1.81	0.63
1:A:309:LEU:HD12	1:A:310:ILE:N	2.13	0.63
1:A:322:MET:HA	1:B:15:ILE:HD11	1.81	0.63
1:B:51:ILE:CG2	1:B:53:ILE:HB	2.29	0.63
1:A:51:ILE:CG2	1:A:53:ILE:HB	2.29	0.62
1:A:15:ILE:HD11	1:B:322:MET:HA	1.81	0.62
1:A:318:THR:O	1:A:322:MET:N	2.29	0.62
1:A:51:ILE:HB	1:B:330:MET:HE1	1.82	0.61
1:B:338:ASN:HB3	1:B:383:LYS:HA	1.83	0.61
1:A:338:ASN:HB3	1:A:383:LYS:HA	1.83	0.61
1:A:339:TYR:HB2	1:A:384:ARG:CZ	2.32	0.60
1:A:307:SER:O	1:A:310:ILE:N	2.32	0.60
1:A:330:MET:HE1	1:B:51:ILE:HB	1.82	0.60
1:A:57:LEU:HD12	1:B:327:GLN:HG2	1.80	0.60
1:A:329:LEU:O	1:A:331:GLY:N	2.35	0.59

Continued on next page...

Continued from previous page...

Atom-1	Atom-2	Interatomic distance (Å)	Clash overlap (Å)
1:B:329:LEU:O	1:B:331:GLY:N	2.35	0.59
1:A:327:GLN:HG2	1:B:57:LEU:HD12	1.79	0.59
1:B:339:TYR:HB2	1:B:384:ARG:CZ	2.32	0.59
1:B:318:THR:O	1:B:322:MET:N	2.29	0.59
1:A:57:LEU:CD1	1:B:327:GLN:CG	2.74	0.58
1:A:52:PRO:HA	1:B:334:ILE:H	1.69	0.58
1:A:334:ILE:H	1:B:52:PRO:HA	1.69	0.58
1:B:51:ILE:C	1:B:53:ILE:N	2.63	0.57
1:A:50:PHE:O	1:A:52:PRO:HD3	2.04	0.57
1:B:50:PHE:O	1:B:52:PRO:HD3	2.04	0.57
1:A:51:ILE:C	1:A:53:ILE:N	2.63	0.57
1:A:324:ILE:HA	1:A:327:GLN:CD	2.30	0.57
1:A:57:LEU:HD12	1:B:327:GLN:CG	2.35	0.57
1:A:331:GLY:O	1:A:332:GLN:C	2.48	0.57
1:B:324:ILE:HA	1:B:327:GLN:CD	2.30	0.57
1:A:327:GLN:CG	1:B:57:LEU:HD12	2.34	0.56
1:A:309:LEU:HA	1:A:312:ILE:HB	1.86	0.56
1:B:307:SER:O	1:B:310:ILE:N	2.32	0.56
1:B:309:LEU:HA	1:B:312:ILE:HB	1.86	0.56
1:A:343:LEU:HB2	1:A:485:LEU:HD21	1.87	0.56
1:B:50:PHE:O	1:B:52:PRO:CD	2.53	0.56
1:A:50:PHE:O	1:A:52:PRO:CD	2.53	0.56
1:B:51:ILE:C	1:B:53:ILE:H	2.13	0.56
1:B:51:ILE:HG22	1:B:53:ILE:N	2.21	0.55
1:B:307:SER:O	1:B:308:LYS:C	2.49	0.55
1:A:342:PRO:HA	1:A:382:ARG:NH2	2.21	0.55
1:B:331:GLY:O	1:B:332:GLN:C	2.48	0.55
1:A:328:PHE:O	1:A:330:MET:N	2.40	0.55
1:A:322:MET:HA	1:B:15:ILE:CD1	2.37	0.55
1:A:51:ILE:HG22	1:A:53:ILE:N	2.21	0.55
1:B:343:LEU:HB2	1:B:485:LEU:HD21	1.87	0.55
1:A:51:ILE:C	1:A:53:ILE:H	2.13	0.55
1:A:309:LEU:HD12	1:A:309:LEU:C	2.32	0.55
1:A:15:ILE:CD1	1:B:322:MET:HA	2.37	0.55
1:B:342:PRO:HA	1:B:382:ARG:NH2	2.21	0.55
1:A:342:PRO:HA	1:A:382:ARG:HH22	1.73	0.54
1:B:339:TYR:CE1	1:B:341:LYS:HB2	2.43	0.54
1:A:339:TYR:CE1	1:A:341:LYS:HB2	2.43	0.54
1:B:328:PHE:O	1:B:330:MET:N	2.40	0.54
1:B:309:LEU:HD12	1:B:309:LEU:C	2.32	0.54
1:B:342:PRO:HA	1:B:382:ARG:HH22	1.73	0.54

Continued on next page...

Continued from previous page...

Atom-1	Atom-2	Interatomic distance (Å)	Clash overlap (Å)
1:A:307:SER:O	1:A:308:LYS:C	2.49	0.53
1:A:329:LEU:C	1:A:331:GLY:N	2.68	0.52
1:A:339:TYR:HB2	1:A:384:ARG:NH2	2.25	0.52
1:B:341:LYS:H	1:B:341:LYS:HZ2	1.58	0.51
1:A:334:ILE:N	1:B:52:PRO:HA	2.25	0.51
1:B:339:TYR:HB2	1:B:384:ARG:NH2	2.25	0.51
1:B:309:LEU:O	1:B:310:ILE:C	2.53	0.51
1:A:52:PRO:HA	1:B:334:ILE:N	2.25	0.51
1:B:289:SER:OG	1:B:290:LEU:N	2.44	0.51
1:A:309:LEU:O	1:A:310:ILE:C	2.53	0.50
1:A:192:ASP:OD1	1:A:193:LYS:N	2.44	0.50
1:A:328:PHE:O	1:A:329:LEU:C	2.55	0.50
1:A:317:PHE:CE2	1:A:321:LEU:HD23	2.47	0.50
1:B:192:ASP:OD1	1:B:193:LYS:N	2.44	0.50
1:A:2:ALA:HB1	1:A:106:CYS:SG	2.51	0.50
1:B:329:LEU:C	1:B:331:GLY:N	2.68	0.50
1:A:212:LEU:O	1:A:213:HIS:C	2.51	0.49
1:B:102:ILE:O	1:B:106:CYS:SG	2.69	0.49
1:B:192:ASP:OD1	1:B:192:ASP:N	2.41	0.49
1:B:328:PHE:O	1:B:329:LEU:C	2.55	0.49
1:B:338:ASN:O	1:B:340:LYS:HG3	2.13	0.49
1:B:210:ASP:O	1:B:211:THR:C	2.55	0.49
1:B:317:PHE:CE2	1:B:321:LEU:HD23	2.47	0.49
1:B:339:TYR:O	1:B:382:ARG:HB3	2.13	0.49
1:A:339:TYR:O	1:A:382:ARG:HB3	2.13	0.48
1:A:475:TRP:CD1	1:A:475:TRP:H	2.26	0.48
1:B:2:ALA:HB1	1:B:106:CYS:SG	2.51	0.48
1:B:212:LEU:O	1:B:213:HIS:C	2.51	0.48
1:A:332:GLN:CG	1:B:54:LYS:HA	2.42	0.48
1:B:40:TYR:O	1:B:41:LEU:C	2.55	0.48
1:A:19:LEU:CD2	1:B:318:THR:HG21	2.43	0.48
1:A:144:ASN:OD1	1:A:145:LYS:N	2.47	0.48
1:A:233:VAL:O	1:A:234:LYS:C	2.57	0.48
1:A:338:ASN:O	1:A:340:LYS:HG3	2.13	0.48
1:B:144:ASN:OD1	1:B:145:LYS:N	2.47	0.47
1:A:192:ASP:OD1	1:A:192:ASP:N	2.41	0.47
1:B:475:TRP:CD1	1:B:475:TRP:H	2.26	0.47
1:A:126:LEU:O	1:A:127:TYR:C	2.57	0.47
1:B:233:VAL:O	1:B:234:LYS:C	2.57	0.47
1:B:321:LEU:O	1:B:324:ILE:HB	2.14	0.47
1:A:281:SER:OG	1:A:282:HIS:N	2.47	0.47

Continued on next page...

Continued from previous page...

Atom-1	Atom-2	Interatomic distance (Å)	Clash overlap (Å)
1:A:321:LEU:O	1:A:324:ILE:HB	2.14	0.47
1:B:325:GLN:HA	1:B:328:PHE:CD2	2.50	0.47
1:A:12:PHE:CD2	1:A:12:PHE:C	2.92	0.47
1:A:318:THR:HG21	1:B:19:LEU:CD2	2.43	0.47
1:B:12:PHE:C	1:B:12:PHE:CD2	2.92	0.47
1:B:259:LYS:NZ	1:B:263:GLU:OE2	2.48	0.47
1:B:126:LEU:O	1:B:127:TYR:C	2.57	0.46
1:A:102:ILE:O	1:A:106:CYS:SG	2.69	0.46
1:B:274:PHE:CD2	1:B:292:LYS:HG3	2.51	0.46
1:A:325:GLN:HA	1:A:328:PHE:CD2	2.50	0.46
1:B:317:PHE:O	1:B:320:LEU:HB2	2.16	0.46
1:A:210:ASP:O	1:A:211:THR:C	2.55	0.46
1:A:290:LEU:O	1:A:291:LEU:C	2.57	0.45
1:A:274:PHE:CD2	1:A:292:LYS:HG3	2.51	0.45
1:A:317:PHE:O	1:A:320:LEU:HB2	2.16	0.45
1:A:40:TYR:O	1:A:41:LEU:C	2.55	0.45
1:B:316:ILE:O	1:B:320:LEU:HG	2.17	0.45
1:A:36:TYR:CD1	1:A:36:TYR:C	2.93	0.45
1:A:307:SER:C	1:A:309:LEU:N	2.74	0.45
1:B:307:SER:C	1:B:309:LEU:N	2.74	0.45
1:A:259:LYS:NZ	1:A:263:GLU:OE2	2.48	0.45
1:A:316:ILE:O	1:A:320:LEU:HG	2.17	0.45
1:A:341:LYS:H	1:A:341:LYS:HZ2	1.63	0.45
1:B:208:ASN:O	1:B:213:HIS:NE2	2.50	0.45
1:B:2:ALA:CB	1:B:102:ILE:HG22	2.48	0.44
1:A:47:LEU:C	1:A:49:PRO:HD2	2.42	0.44
1:A:21:PHE:CD2	1:A:21:PHE:C	2.94	0.44
1:B:47:LEU:C	1:B:49:PRO:HD2	2.42	0.44
1:A:41:LEU:HD11	1:B:322:MET:SD	2.58	0.44
1:A:208:ASN:O	1:A:213:HIS:NE2	2.50	0.44
1:A:318:THR:HA	1:A:321:LEU:HB2	2.00	0.44
1:B:290:LEU:O	1:B:291:LEU:C	2.57	0.44
1:B:5:LEU:HD22	1:B:106:CYS:HB3	2.00	0.43
1:B:317:PHE:O	1:B:321:LEU:N	2.44	0.43
1:B:318:THR:HA	1:B:321:LEU:HB2	1.99	0.43
1:B:323:VAL:O	1:B:327:GLN:N	2.45	0.43
1:A:339:TYR:CE1	1:A:341:LYS:HD2	2.54	0.43
1:B:339:TYR:CE1	1:B:341:LYS:HD2	2.54	0.43
1:B:256:ASN:OD1	1:B:256:ASN:N	2.44	0.43
1:A:2:ALA:CB	1:A:102:ILE:HG22	2.48	0.43
1:A:5:LEU:HD22	1:A:106:CYS:HB3	2.00	0.43

Continued on next page...

Continued from previous page...

Atom-1	Atom-2	Interatomic distance (Å)	Clash overlap (Å)
1:B:330:MET:HE3	1:B:330:MET:HB2	1.71	0.43
1:B:51:ILE:HA	1:B:52:PRO:HD2	1.71	0.43
1:A:322:MET:SD	1:B:41:LEU:HD11	2.59	0.43
1:A:192:ASP:OD1	1:A:192:ASP:C	2.60	0.42
1:B:324:ILE:HG22	1:B:328:PHE:CZ	2.55	0.42
1:B:340:LYS:HZ2	1:B:341:LYS:N	2.18	0.42
1:A:203:TYR:CE2	1:A:207:LYS:HB2	2.55	0.42
1:B:50:PHE:O	1:B:51:ILE:C	2.63	0.42
1:B:308:LYS:O	1:B:312:ILE:HG13	2.20	0.42
1:A:343:LEU:C	1:A:345:ASN:N	2.77	0.42
1:B:281:SER:OG	1:B:282:HIS:N	2.47	0.42
1:A:326:SER:O	1:B:55:PHE:CE2	2.73	0.42
1:B:321:LEU:HA	1:B:324:ILE:HB	2.02	0.42
1:A:289:SER:OG	1:A:290:LEU:N	2.44	0.41
1:A:317:PHE:O	1:A:321:LEU:N	2.44	0.41
1:A:340:LYS:HZ2	1:A:341:LYS:N	2.18	0.41
1:A:324:ILE:HG22	1:A:328:PHE:CZ	2.55	0.41
1:B:343:LEU:C	1:B:345:ASN:N	2.77	0.41
1:A:203:TYR:O	1:A:204:ALA:C	2.62	0.41
1:A:54:LYS:HA	1:B:332:GLN:CG	2.43	0.41
1:B:197:TYR:CD2	1:B:197:TYR:N	2.87	0.41
1:A:34:LEU:HA	1:B:311:LEU:HD22	2.03	0.41
1:A:308:LYS:O	1:A:312:ILE:HG13	2.20	0.41
1:B:203:TYR:CE2	1:B:207:LYS:HB2	2.55	0.41
1:A:321:LEU:HD22	1:A:324:ILE:CD1	2.48	0.41
1:B:521:TYR:CD1	1:B:521:TYR:C	2.98	0.41
1:A:311:LEU:HD22	1:B:34:LEU:HA	2.02	0.41
1:B:21:PHE:CD2	1:B:21:PHE:C	2.94	0.41
1:A:55:PHE:CE2	1:B:326:SER:O	2.73	0.41
1:A:321:LEU:HA	1:A:324:ILE:HB	2.02	0.41
1:A:521:TYR:CD1	1:A:521:TYR:C	2.98	0.41
1:A:343:LEU:C	1:A:345:ASN:H	2.29	0.41
1:A:51:ILE:HA	1:A:52:PRO:HD2	1.71	0.40
1:B:203:TYR:O	1:B:204:ALA:C	2.62	0.40
1:B:343:LEU:C	1:B:345:ASN:H	2.29	0.40
1:B:240:ASP:O	1:B:241:ASN:C	2.63	0.40
1:B:343:LEU:HD21	1:B:373:TYR:CD1	2.57	0.40
1:A:343:LEU:HD21	1:A:373:TYR:CD1	2.57	0.40
1:A:407:ASP:OD1	1:A:407:ASP:N	2.46	0.40
1:A:105:ILE:O	1:A:106:CYS:C	2.64	0.40
1:B:144:ASN:OD1	1:B:144:ASN:N	2.53	0.40

There are no symmetry-related clashes.

5.3 Torsion angles [i](#)

5.3.1 Protein backbone [i](#)

In the following table, the Percentiles column shows the percent Ramachandran outliers of the chain as a percentile score with respect to all PDB entries followed by that with respect to all EM entries.

The Analysed column shows the number of residues for which the backbone conformation was analysed, and the total number of residues.

Mol	Chain	Analysed	Favoured	Allowed	Outliers	Percentiles	
1	A	525/602 (87%)	493 (94%)	28 (5%)	4 (1%)	16	53
1	B	525/602 (87%)	493 (94%)	28 (5%)	4 (1%)	16	53
All	All	1050/1204 (87%)	986 (94%)	56 (5%)	8 (1%)	18	53

All (8) Ramachandran outliers are listed below:

Mol	Chain	Res	Type
1	A	329	LEU
1	A	330	MET
1	B	329	LEU
1	B	330	MET
1	A	332	GLN
1	B	332	GLN
1	A	52	PRO
1	B	52	PRO

5.3.2 Protein sidechains [i](#)

In the following table, the Percentiles column shows the percent sidechain outliers of the chain as a percentile score with respect to all PDB entries followed by that with respect to all EM entries.

The Analysed column shows the number of residues for which the sidechain conformation was analysed, and the total number of residues.

Mol	Chain	Analysed	Rotameric	Outliers	Percentiles	
1	A	493/561 (88%)	483 (98%)	10 (2%)	48	65
1	B	493/561 (88%)	483 (98%)	10 (2%)	48	65

Continued on next page...

Continued from previous page...

Mol	Chain	Analysed	Rotameric	Outliers	Percentiles
All	All	986/1122 (88%)	966 (98%)	20 (2%)	48 65

All (20) residues with a non-rotameric sidechain are listed below:

Mol	Chain	Res	Type
1	A	159	ILE
1	A	307	SER
1	A	321	LEU
1	A	322	MET
1	A	326	SER
1	A	330	MET
1	A	333	SER
1	A	340	LYS
1	A	341	LYS
1	A	428	GLN
1	B	159	ILE
1	B	307	SER
1	B	321	LEU
1	B	322	MET
1	B	326	SER
1	B	330	MET
1	B	333	SER
1	B	340	LYS
1	B	341	LYS
1	B	428	GLN

Sometimes sidechains can be flipped to improve hydrogen bonding and reduce clashes. All (11) such sidechains are listed below:

Mol	Chain	Res	Type
1	A	325	GLN
1	A	428	GLN
1	A	484	ASN
1	A	500	HIS
1	A	538	ASN
1	B	153	HIS
1	B	325	GLN
1	B	428	GLN
1	B	484	ASN
1	B	500	HIS
1	B	538	ASN

5.3.3 RNA [i](#)

There are no RNA molecules in this entry.

5.4 Non-standard residues in protein, DNA, RNA chains [i](#)

There are no non-standard protein/DNA/RNA residues in this entry.

5.5 Carbohydrates [i](#)

There are no oligosaccharides in this entry.

5.6 Ligand geometry [i](#)

Of 2 ligands modelled in this entry, 2 are monoatomic - leaving 0 for Mogul analysis.

There are no bond length outliers.

There are no bond angle outliers.

There are no chirality outliers.

There are no torsion outliers.

There are no ring outliers.

No monomer is involved in short contacts.

5.7 Other polymers [i](#)

There are no such residues in this entry.

5.8 Polymer linkage issues [i](#)

There are no chain breaks in this entry.

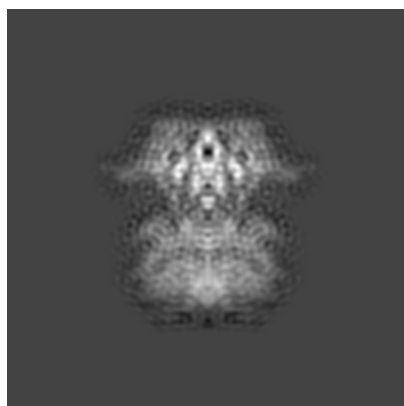
6 Map visualisation [i](#)

This section contains visualisations of the EMDB entry EMD-28662. These allow visual inspection of the internal detail of the map and identification of artifacts.

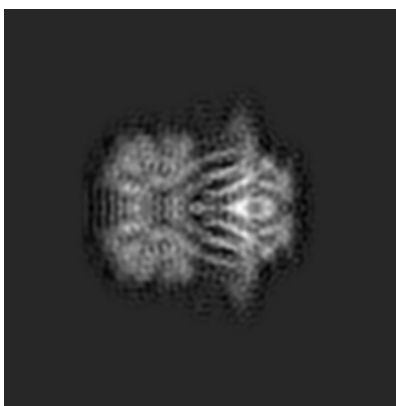
Images derived from a raw map, generated by summing the deposited half-maps, are presented below the corresponding image components of the primary map to allow further visual inspection and comparison with those of the primary map.

6.1 Orthogonal projections [i](#)

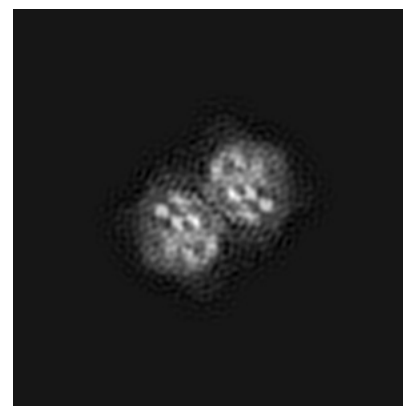
6.1.1 Primary map



X

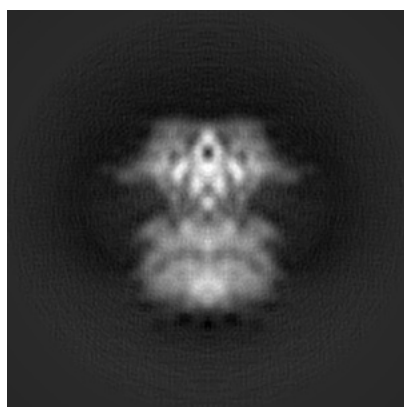


Y

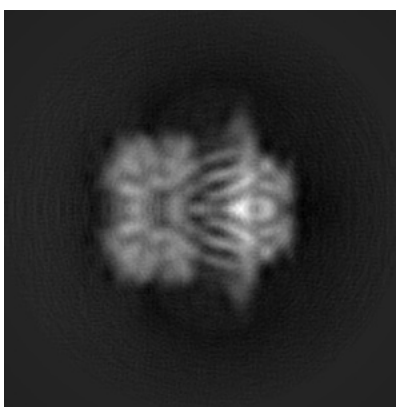


Z

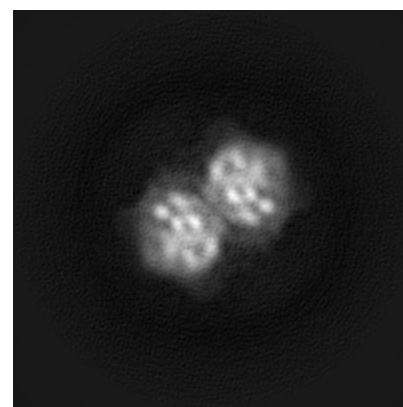
6.1.2 Raw map



X



Y

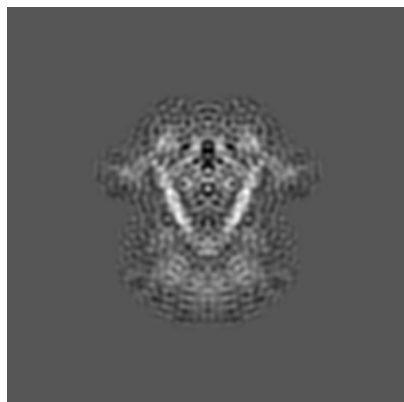


Z

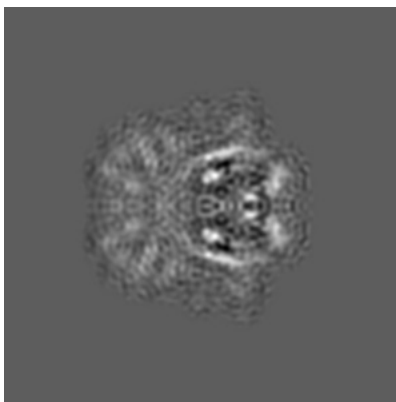
The images above show the map projected in three orthogonal directions.

6.2 Central slices [i](#)

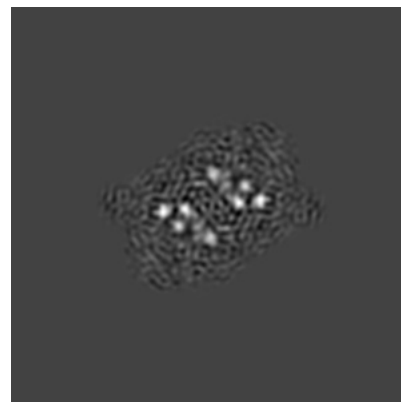
6.2.1 Primary map



X Index: 100

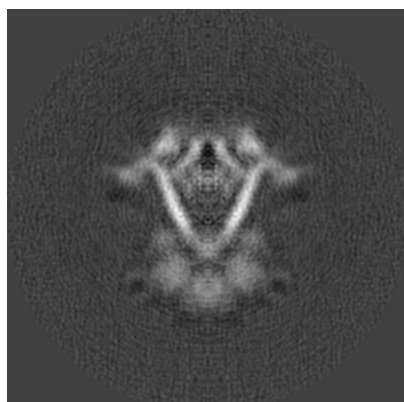


Y Index: 100

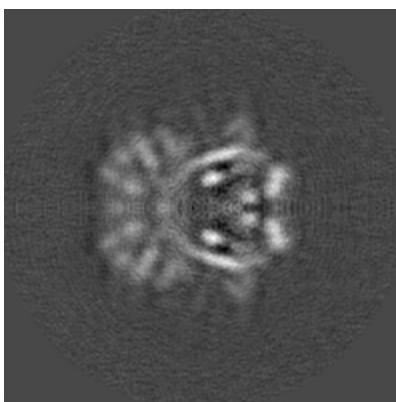


Z Index: 100

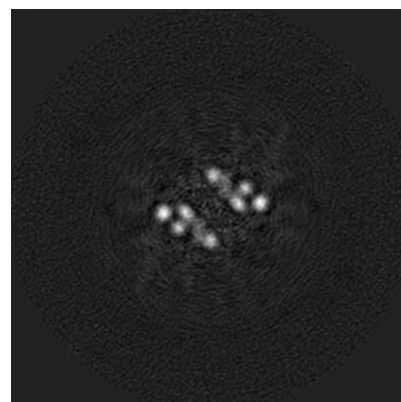
6.2.2 Raw map



X Index: 100



Y Index: 100

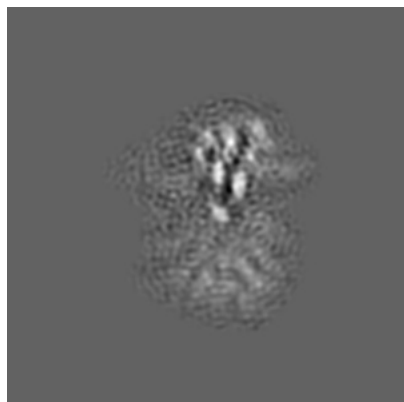


Z Index: 100

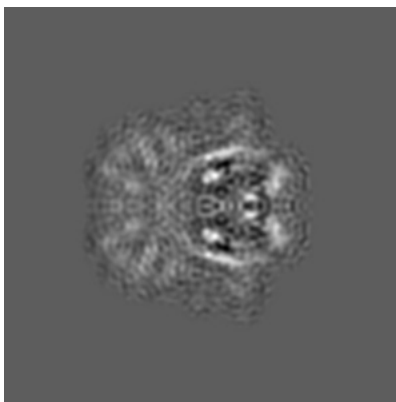
The images above show central slices of the map in three orthogonal directions.

6.3 Largest variance slices [i](#)

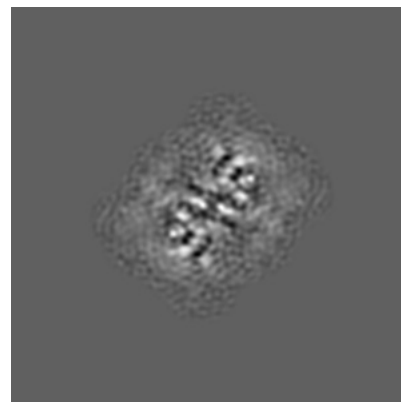
6.3.1 Primary map



X Index: 111

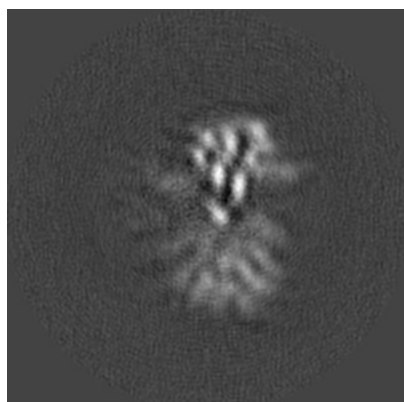


Y Index: 100

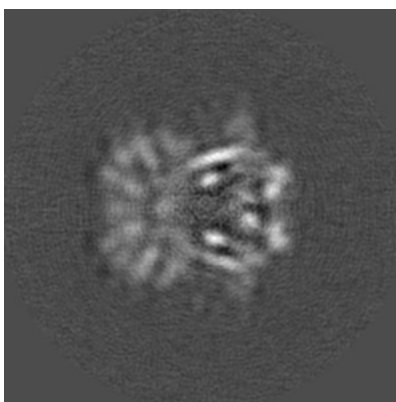


Z Index: 123

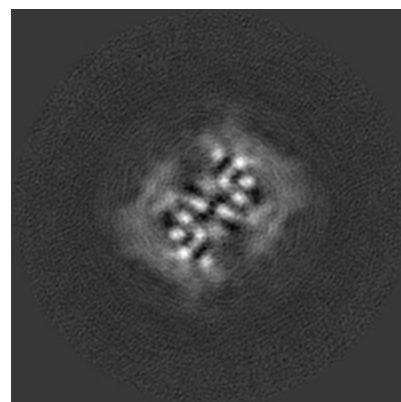
6.3.2 Raw map



X Index: 111



Y Index: 101

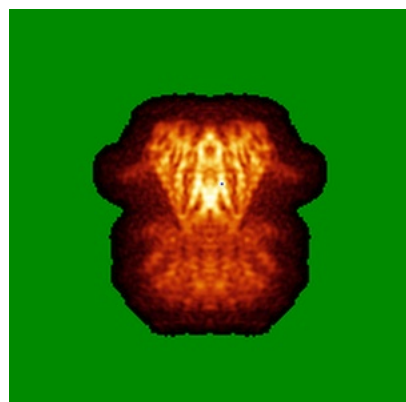


Z Index: 122

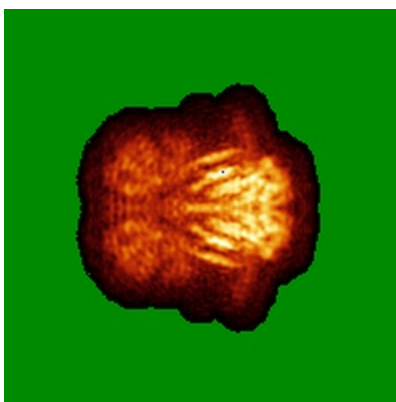
The images above show the largest variance slices of the map in three orthogonal directions.

6.4 Orthogonal standard-deviation projections (False-color) [i](#)

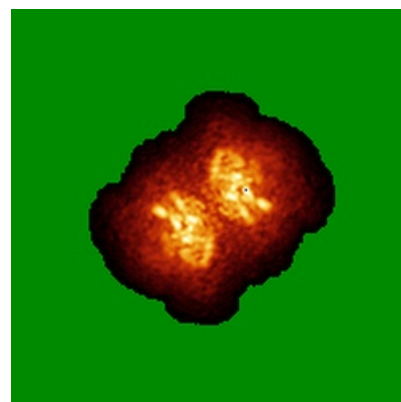
6.4.1 Primary map



X

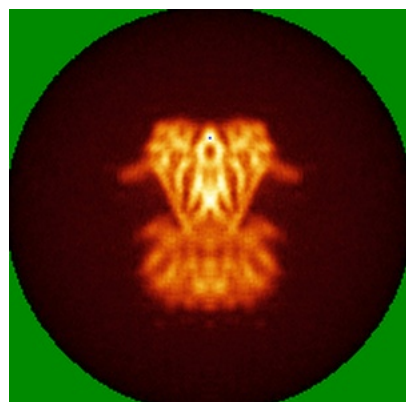


Y

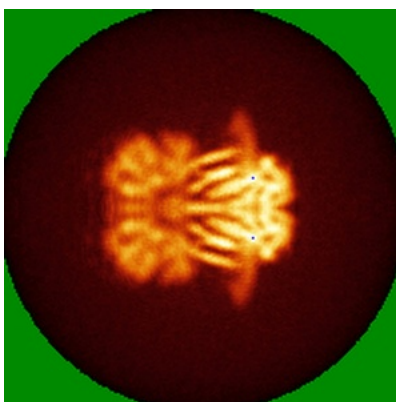


Z

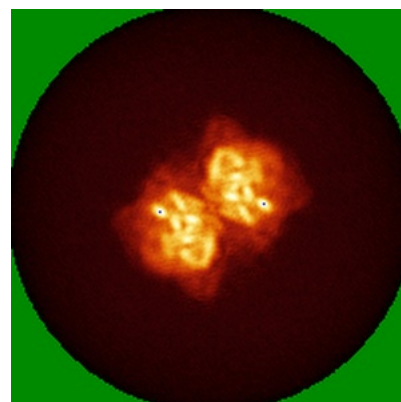
6.4.2 Raw map



X



Y

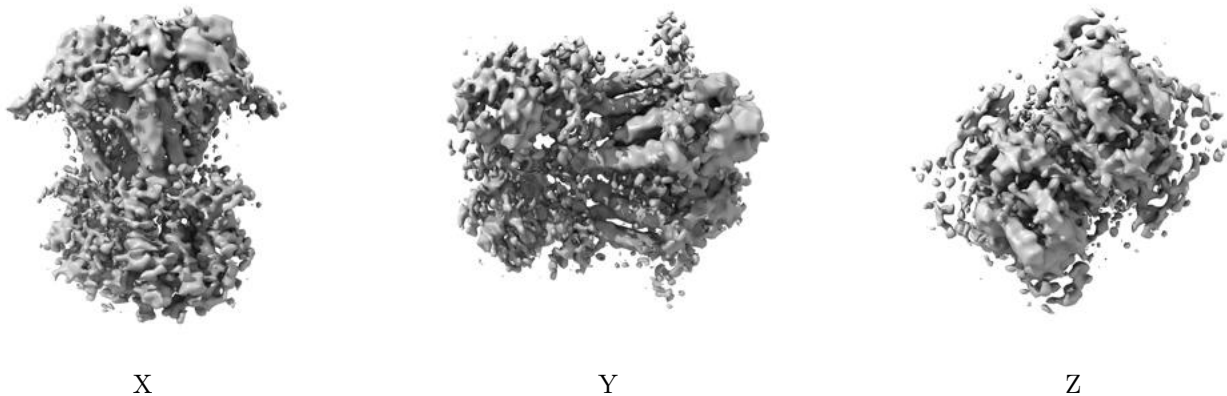


Z

The images above show the map standard deviation projections with false color in three orthogonal directions. Minimum values are shown in green, max in blue, and dark to light orange shades represent small to large values respectively.

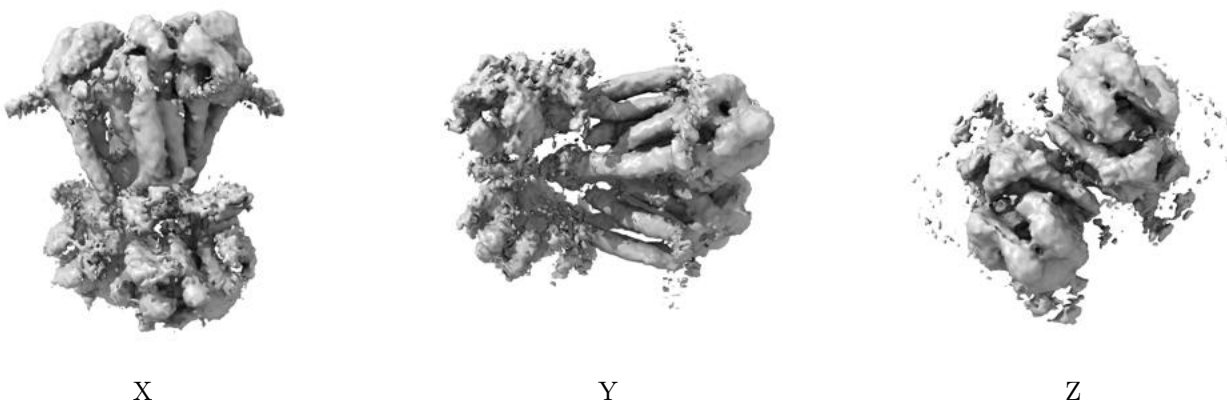
6.5 Orthogonal surface views [i](#)

6.5.1 Primary map



The images above show the 3D surface view of the map at the recommended contour level 0.013. These images, in conjunction with the slice images, may facilitate assessment of whether an appropriate contour level has been provided.

6.5.2 Raw map



These images show the 3D surface of the raw map. The raw map's contour level was selected so that its surface encloses the same volume as the primary map does at its recommended contour level.

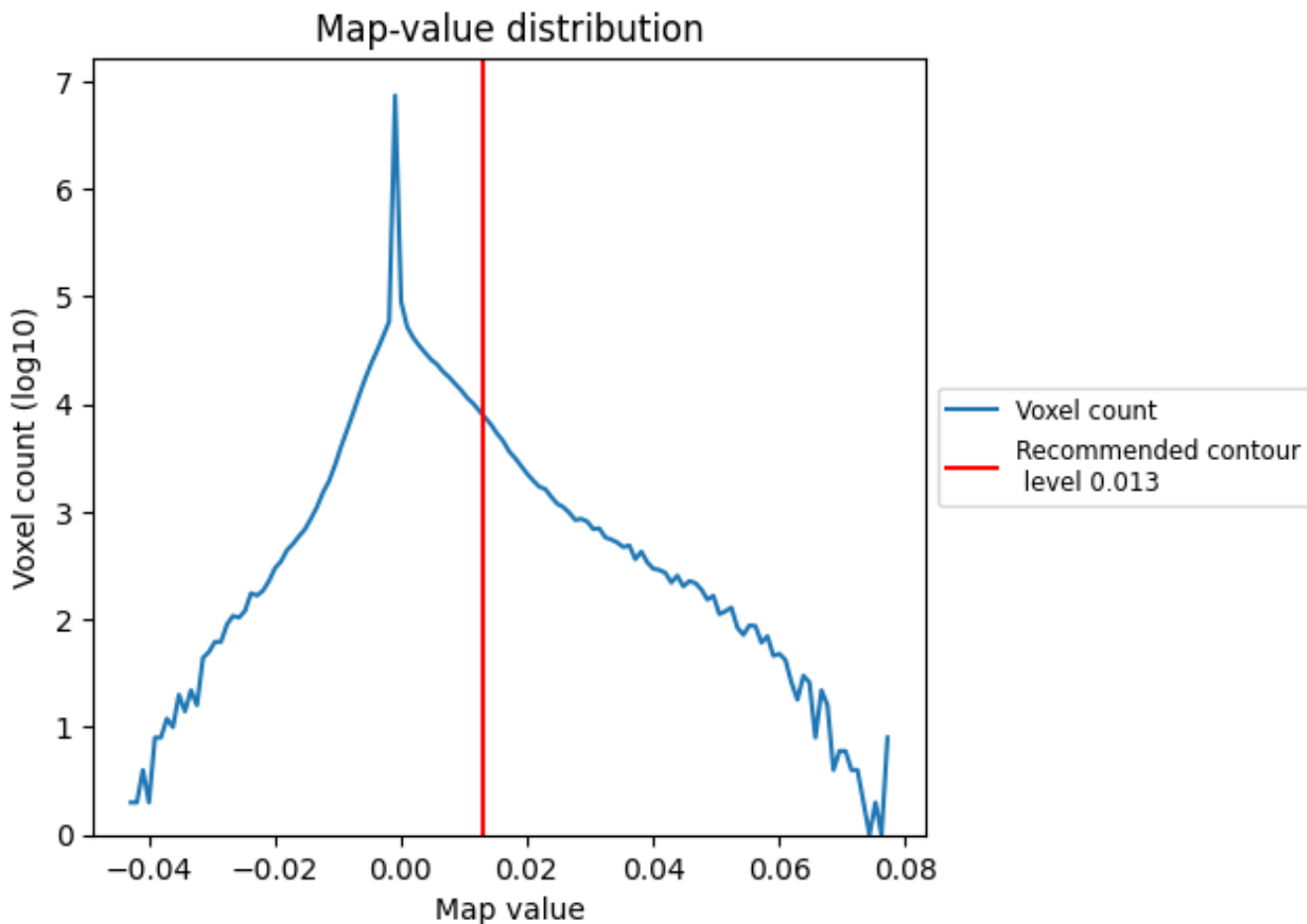
6.6 Mask visualisation [i](#)

This section was not generated. No masks/segmentation were deposited.

7 Map analysis [i](#)

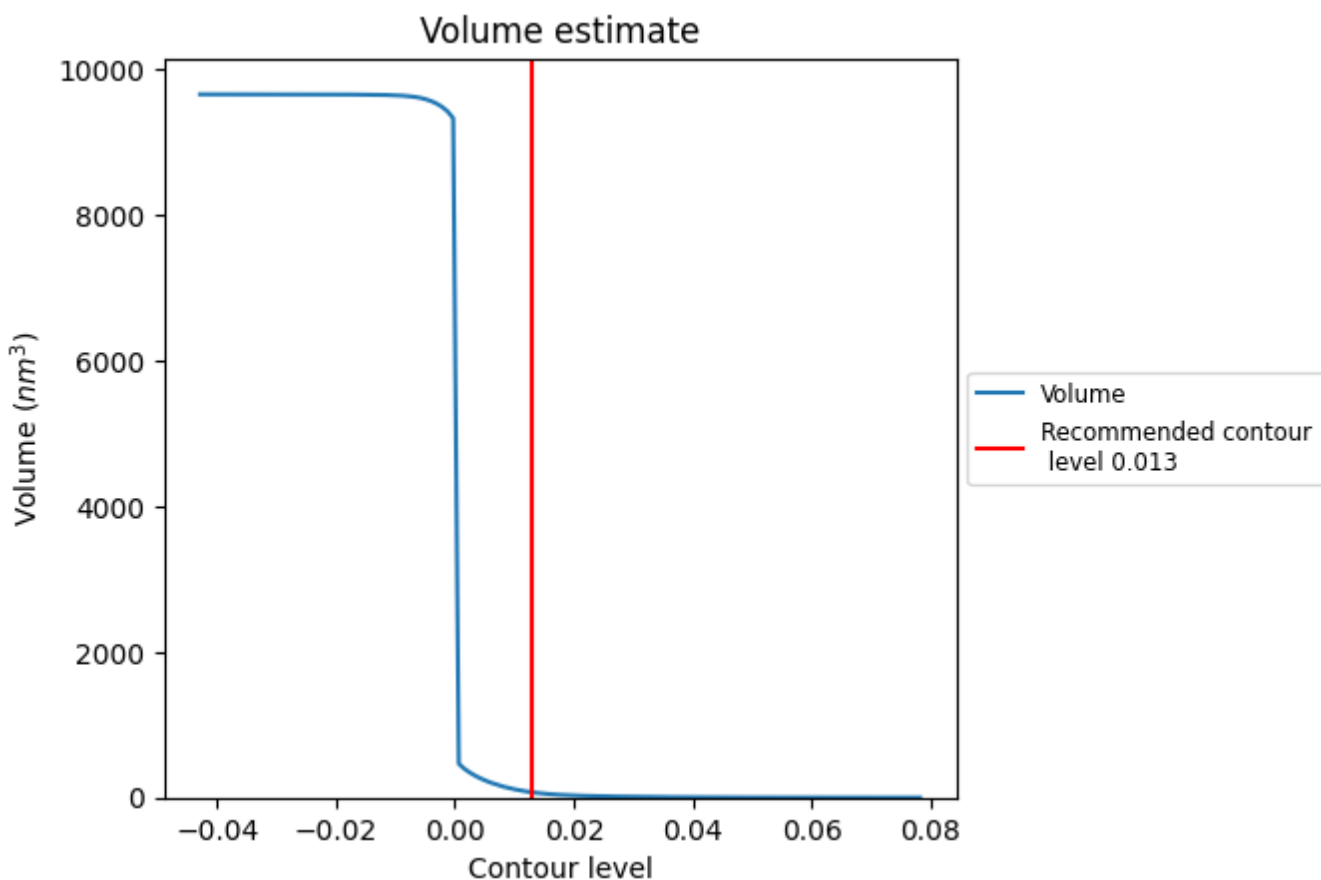
This section contains the results of statistical analysis of the map.

7.1 Map-value distribution [i](#)



The map-value distribution is plotted in 128 intervals along the x-axis. The y-axis is logarithmic. A spike in this graph at zero usually indicates that the volume has been masked.

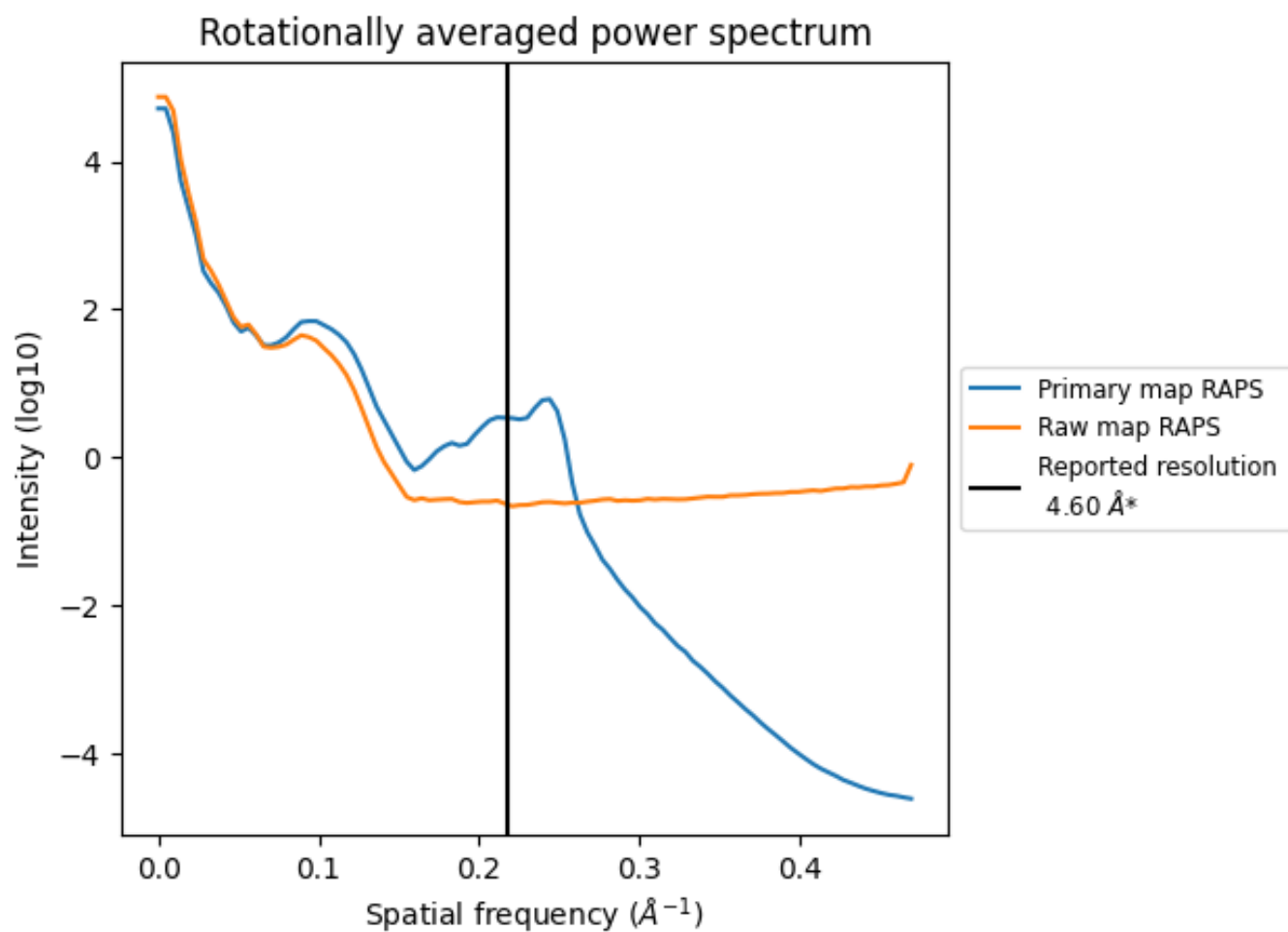
7.2 Volume estimate [\(i\)](#)



The volume at the recommended contour level is 73 nm³; this corresponds to an approximate mass of 66 kDa.

The volume estimate graph shows how the enclosed volume varies with the contour level. The recommended contour level is shown as a vertical line and the intersection between the line and the curve gives the volume of the enclosed surface at the given level.

7.3 Rotationally averaged power spectrum i

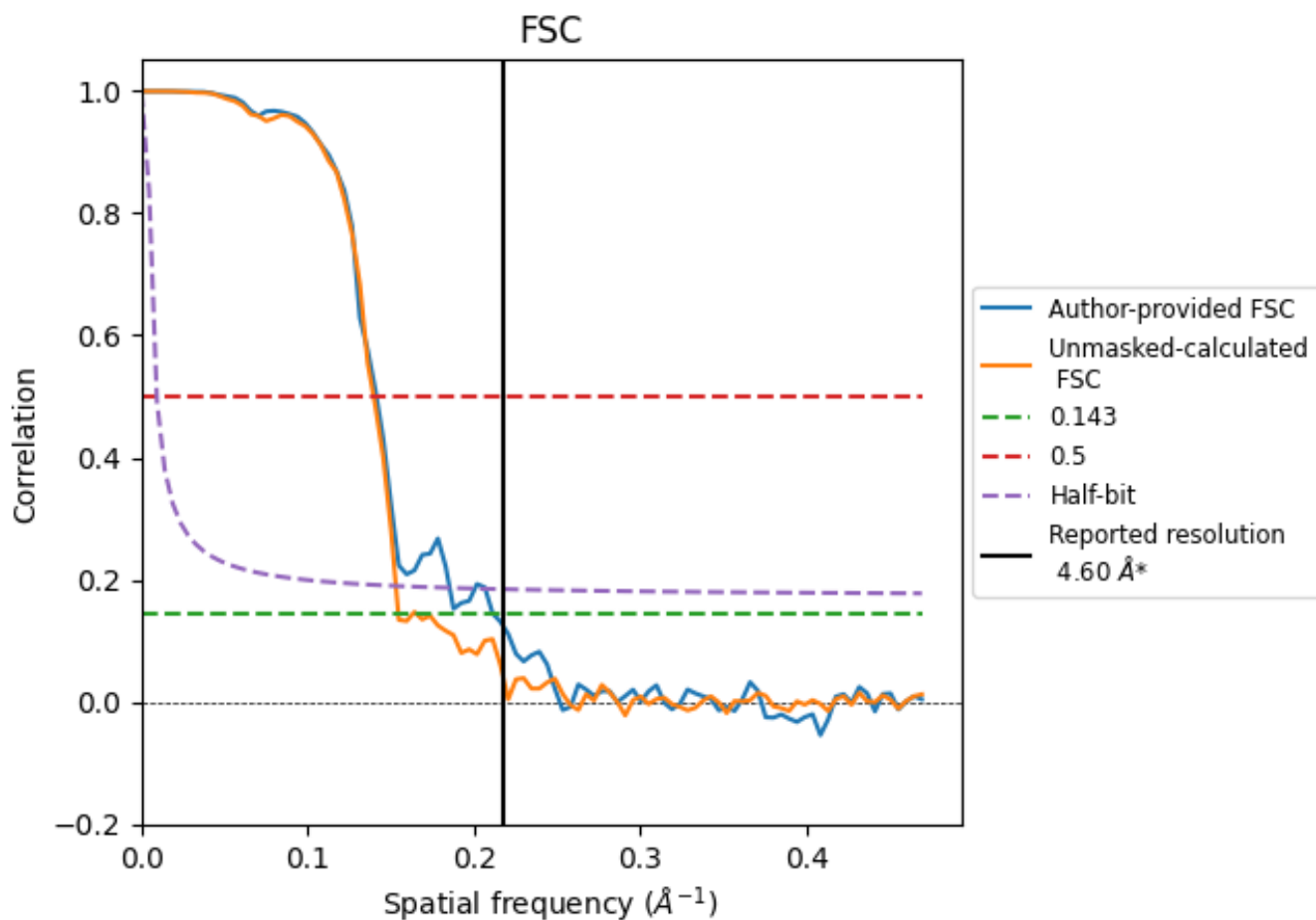


*Reported resolution corresponds to spatial frequency of 0.217 Å⁻¹

8 Fourier-Shell correlation [i](#)

Fourier-Shell Correlation (FSC) is the most commonly used method to estimate the resolution of single-particle and subtomogram-averaged maps. The shape of the curve depends on the imposed symmetry, mask and whether or not the two 3D reconstructions used were processed from a common reference. The reported resolution is shown as a black line. A curve is displayed for the half-bit criterion in addition to lines showing the 0.143 gold standard cut-off and 0.5 cut-off.

8.1 FSC [i](#)



*Reported resolution corresponds to spatial frequency of 0.217 Å⁻¹

8.2 Resolution estimates [i](#)

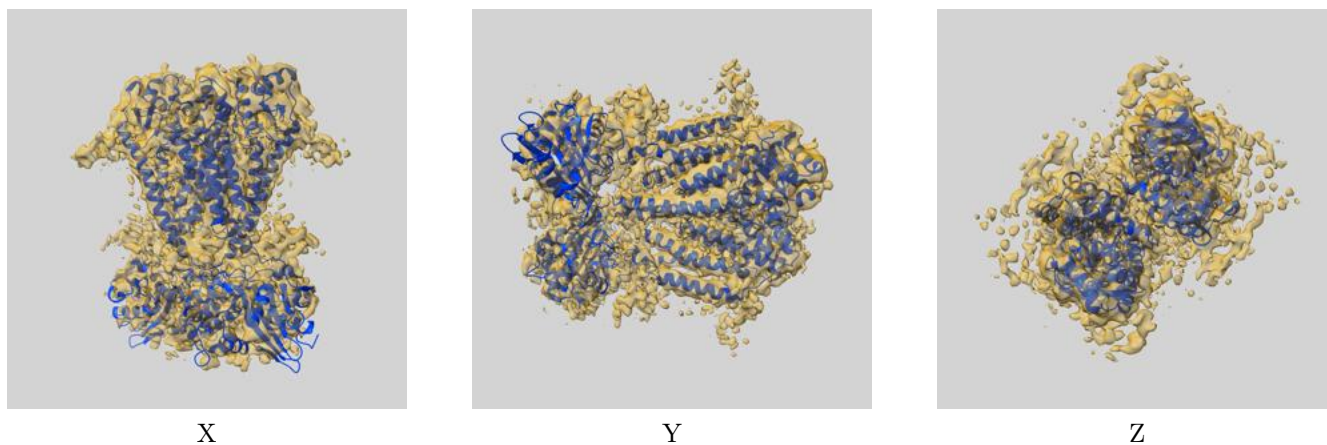
Resolution estimate (Å)	Estimation criterion (FSC cut-off)		
	0.143	0.5	Half-bit
Reported by author	4.60	-	-
Author-provided FSC curve	4.72	7.07	5.39
Unmasked-calculated*	6.47	7.16	6.53

*Resolution estimate based on FSC curve calculated by comparison of deposited half-maps. The value from deposited half-maps intersecting FSC 0.143 CUT-OFF 6.47 differs from the reported value 4.6 by more than 10 %

9 Map-model fit [i](#)

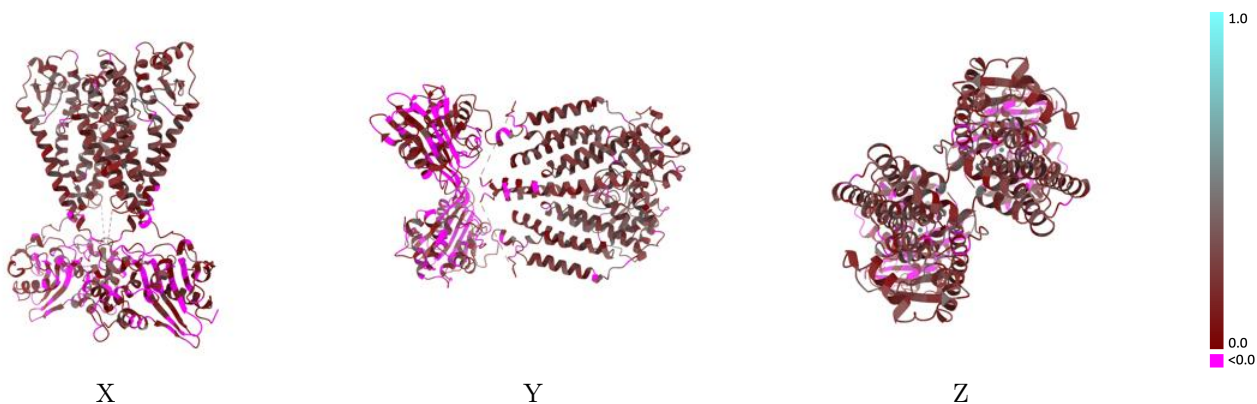
This section contains information regarding the fit between EMDB map EMD-28662 and PDB model 8EXT. Per-residue inclusion information can be found in section 3 on page 5.

9.1 Map-model overlay [i](#)



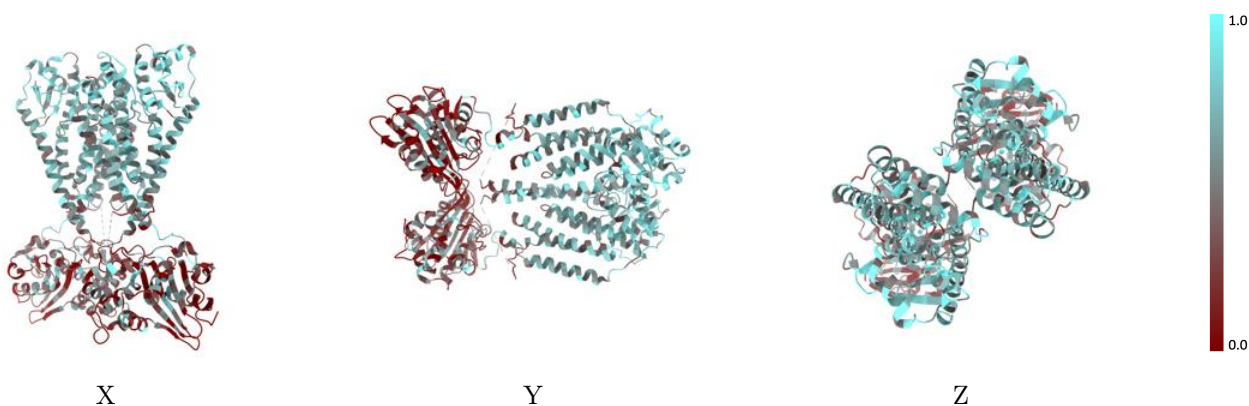
The images above show the 3D surface view of the map at the recommended contour level 0.013 at 50% transparency in yellow overlaid with a ribbon representation of the model coloured in blue. These images allow for the visual assessment of the quality of fit between the atomic model and the map.

9.2 Q-score mapped to coordinate model [i](#)



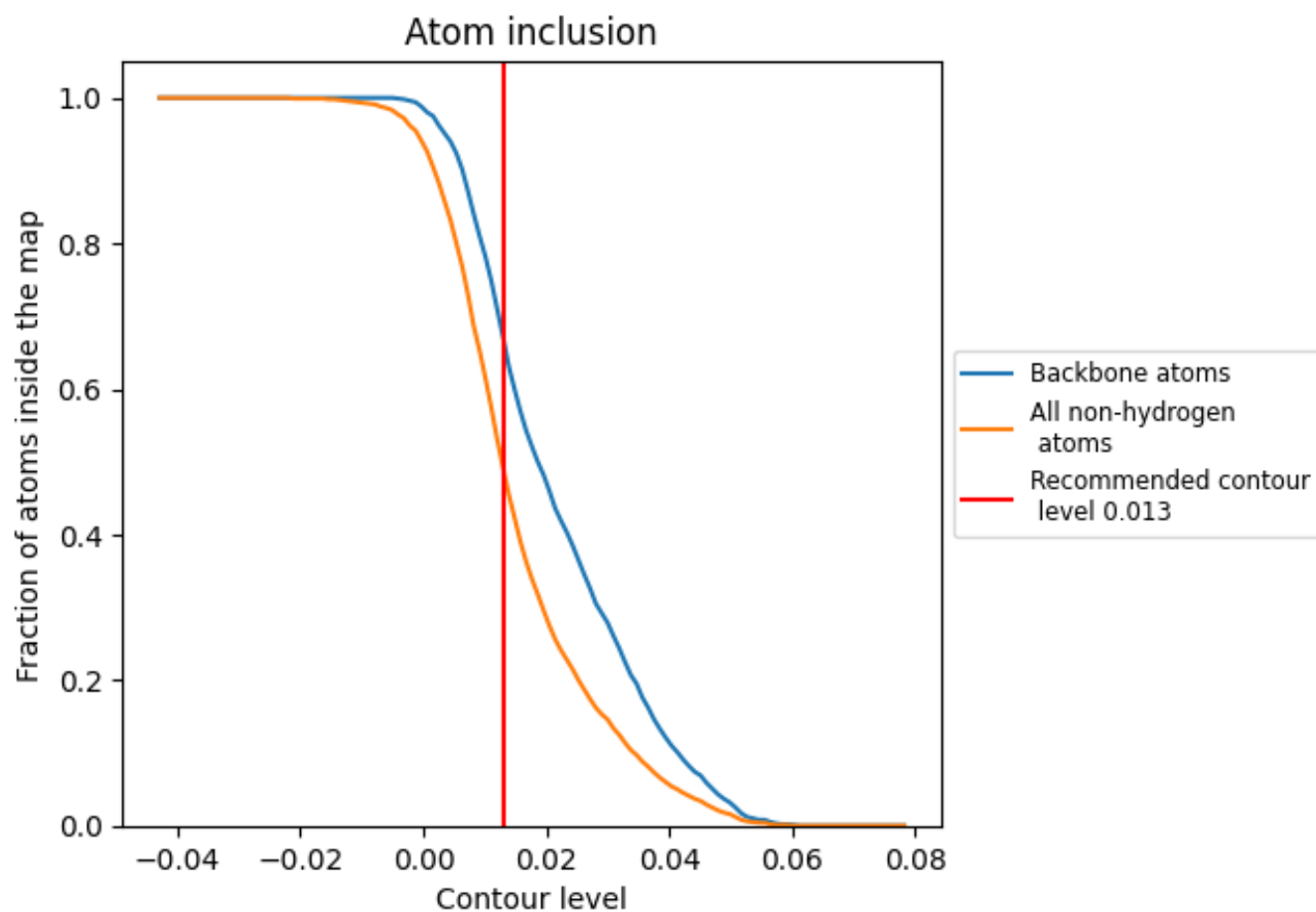
The images above show the model with each residue coloured according to its Q-score. This shows their resolvability in the map with higher Q-score values reflecting better resolvability. Please note: Q-score is calculating the resolvability of atoms, and thus high values are only expected at resolutions at which atoms can be resolved. Low Q-score values may therefore be expected for many entries.

9.3 Atom inclusion mapped to coordinate model [i](#)



The images above show the model with each residue coloured according to its atom inclusion. This shows to what extent they are inside the map at the recommended contour level (0.013).







9.4 Atom inclusion [i](#)



At the recommended contour level, 67% of all backbone atoms, 49% of all non-hydrogen atoms, are inside the map.

9.5 Map-model fit summary

The table lists the average atom inclusion at the recommended contour level (0.013) and Q-score for the entire model and for each chain.

Chain	Atom inclusion	Q-score
All	 0.4910	 0.1460
A	 0.4910	 0.1460
B	 0.4920	 0.1460

