



wwPDB EM Validation Summary Report ⓘ

Mar 24, 2026 – 02:10 AM UTC

PDB ID : 7F16 / pdb_00007f16
EMDB ID : EMD-31405
Title : Cryo-EM structure of parathyroid hormone receptor type 2 in complex with a tuberoinfundibular peptide of 39 residues and G protein
Authors : Wang, X.; Cheng, X.; Zhao, L.H.; Wang, Y.; Ye, C.; Zou, X.; Dai, A.; Cong, Z.; Chen, J.; Zhou, Q.; Xia, T.; Jiang, H.; Xu, H.E.; Yang, D.; Wang, M.W.
Deposited on : 2021-06-08
Resolution : 2.80 Å(reported)

This is a wwPDB EM Validation Summary Report for a publicly released PDB entry.

We welcome your comments at validation@mail.wwpdb.org

A user guide is available at

<https://www.wwpdb.org/validation/2017/EMValidationReportHelp>

with specific help available everywhere you see the ⓘ symbol.

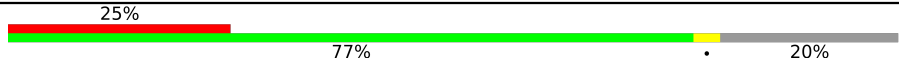

The types of validation reports are described at

<http://www.wwpdb.org/validation/2017/FAQs#types>.

The following versions of software and data (see [references ⓘ](#)) were used in the production of this report:

EMDB validation analysis : 0.0.1.dev132
Mogul : 2022.3.0, CSD as543be (2022)
MolProbity : 4-5-2 with Phenix2.0
Buster-report : wwPDB partial adaption of 1.1.7 (2018)
Percentile statistics : 20250101.v01 (using entries in the PDB archive January 1st 2025)
EM percentile statistics : 202505.v01 (Using data in the EMDB archive up until May 2025)
MapQ : 1.9.13
Ideal geometry (proteins) : Engh & Huber (2001)
Ideal geometry (DNA, RNA) : Parkinson et al. (1996)
Validation Pipeline (wwPDB-VP) : 2.49

Continued from previous page...

Mol	Chain	Length	Quality of chain
5	G	71	
6	N	140	

2 Entry composition

There are 8 unique types of molecules in this entry. The entry contains 9488 atoms, of which 0 are hydrogens and 0 are deuteriums.

In the tables below, the AltConf column contains the number of residues with at least one atom in alternate conformation and the Trace column contains the number of residues modelled with at most 2 atoms.

- Molecule 1 is a protein called Parathyroid hormone 2 receptor.

Mol	Chain	Residues	Atoms					AltConf	Trace
			Total	C	N	O	S		
1	R	376	3072	2040	503	509	20	0	0

There are 15 discrepancies between the modelled and reference sequences:

Chain	Residue	Modelled	Actual	Comment	Reference
R	9	MET	-	initiating methionine	UNP P49190
R	10	LYS	-	expression tag	UNP P49190
R	11	THR	-	expression tag	UNP P49190
R	12	ILE	-	expression tag	UNP P49190
R	13	ILE	-	expression tag	UNP P49190
R	14	ALA	-	expression tag	UNP P49190
R	15	LEU	-	expression tag	UNP P49190
R	16	SER	-	expression tag	UNP P49190
R	17	TYR	-	expression tag	UNP P49190
R	18	ILE	-	expression tag	UNP P49190
R	19	PHE	-	expression tag	UNP P49190
R	20	CYS	-	expression tag	UNP P49190
R	21	LEU	-	expression tag	UNP P49190
R	22	VAL	-	expression tag	UNP P49190
R	23	PHE	-	expression tag	UNP P49190

- Molecule 2 is a protein called Tuberoindubular peptide of 39 residues.

Mol	Chain	Residues	Atoms					AltConf	Trace
			Total	C	N	O	S		
2	P	34	282	179	56	46	1	0	0

- Molecule 3 is a protein called Guanine nucleotide-binding protein G(s) subunit alpha isoforms short.

Mol	Chain	Residues	Atoms					AltConf	Trace
			Total	C	N	O	S		
3	A	230	1905	1201	346	351	7	0	0

There are 8 discrepancies between the modelled and reference sequences:

Chain	Residue	Modelled	Actual	Comment	Reference
A	54	ASN	SER	engineered mutation	UNP P63092
A	226	ALA	GLY	engineered mutation	UNP P63092
A	268	ALA	GLU	engineered mutation	UNP P63092
A	271	LYS	ASN	engineered mutation	UNP P63092
A	274	ASP	LYS	engineered mutation	UNP P63092
A	280	LYS	ARG	engineered mutation	UNP P63092
A	284	ASP	THR	engineered mutation	UNP P63092
A	285	THR	ILE	engineered mutation	UNP P63092

- Molecule 4 is a protein called Guanine nucleotide-binding protein G(I)/G(S)/G(T) subunit beta-1.

Mol	Chain	Residues	Atoms					AltConf	Trace
			Total	C	N	O	S		
4	B	338	2600	1604	467	508	21	0	0

There are 32 discrepancies between the modelled and reference sequences:

Chain	Residue	Modelled	Actual	Comment	Reference
B	-4	MET	-	initiating methionine	UNP P54311
B	-3	GLY	-	expression tag	UNP P54311
B	-2	SER	-	expression tag	UNP P54311
B	-1	LEU	-	expression tag	UNP P54311
B	0	LEU	-	expression tag	UNP P54311
B	1	GLN	-	expression tag	UNP P54311
B	341	GLY	-	expression tag	UNP P54311
B	342	SER	-	expression tag	UNP P54311
B	343	SER	-	expression tag	UNP P54311
B	344	GLY	-	expression tag	UNP P54311
B	345	GLY	-	expression tag	UNP P54311
B	346	GLY	-	expression tag	UNP P54311
B	347	GLY	-	expression tag	UNP P54311
B	348	SER	-	expression tag	UNP P54311
B	349	GLY	-	expression tag	UNP P54311
B	350	GLY	-	expression tag	UNP P54311
B	351	GLY	-	expression tag	UNP P54311
B	352	GLY	-	expression tag	UNP P54311

Continued on next page...

Continued from previous page...

Chain	Residue	Modelled	Actual	Comment	Reference
B	353	SER	-	expression tag	UNP P54311
B	354	SER	-	expression tag	UNP P54311
B	355	GLY	-	expression tag	UNP P54311
B	356	VAL	-	expression tag	UNP P54311
B	357	SER	-	expression tag	UNP P54311
B	358	GLY	-	expression tag	UNP P54311
B	359	TRP	-	expression tag	UNP P54311
B	360	ARG	-	expression tag	UNP P54311
B	361	LEU	-	expression tag	UNP P54311
B	362	PHE	-	expression tag	UNP P54311
B	363	LYS	-	expression tag	UNP P54311
B	364	LYS	-	expression tag	UNP P54311
B	365	ILE	-	expression tag	UNP P54311
B	366	SER	-	expression tag	UNP P54311

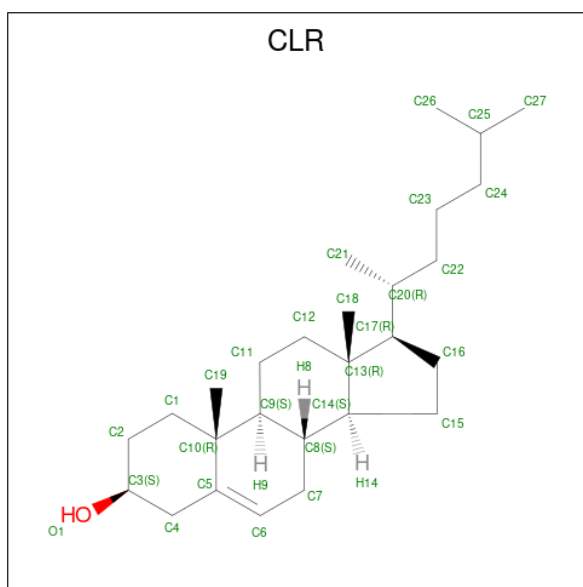
- Molecule 5 is a protein called Guanine nucleotide-binding protein G(I)/G(S)/G(O) subunit gamma-2.

Mol	Chain	Residues	Atoms					AltConf	Trace
			Total	C	N	O	S		
5	G	57	436	273	77	83	3	0	0

- Molecule 6 is a protein called Nanobody-35.

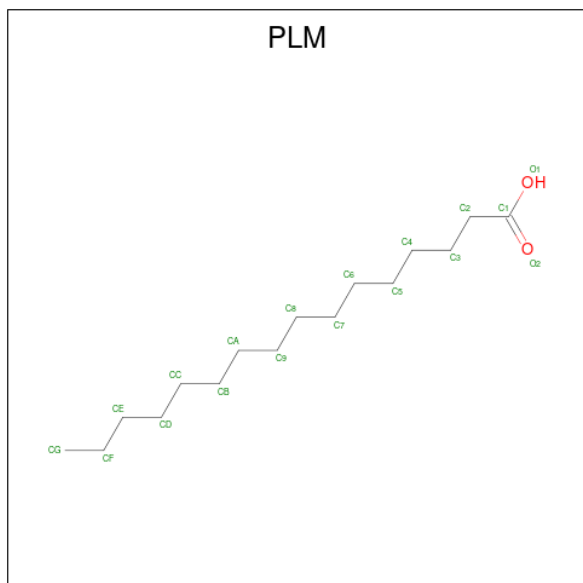
Mol	Chain	Residues	Atoms					AltConf	Trace
			Total	C	N	O	S		
6	N	128	973	605	170	192	6	0	0

- Molecule 7 is CHOLESTEROL (CCD ID: CLR) (formula: C₂₇H₄₆O).



Mol	Chain	Residues	Atoms			AltConf
7	R	1	Total	C	O	0
			28	27	1	
7	R	1	Total	C	O	0
			28	27	1	
7	R	1	Total	C	O	0
			28	27	1	
7	R	1	Total	C	O	0
			28	27	1	

- Molecule 8 is PALMITIC ACID (CCD ID: PLM) (formula: $C_{16}H_{32}O_2$).

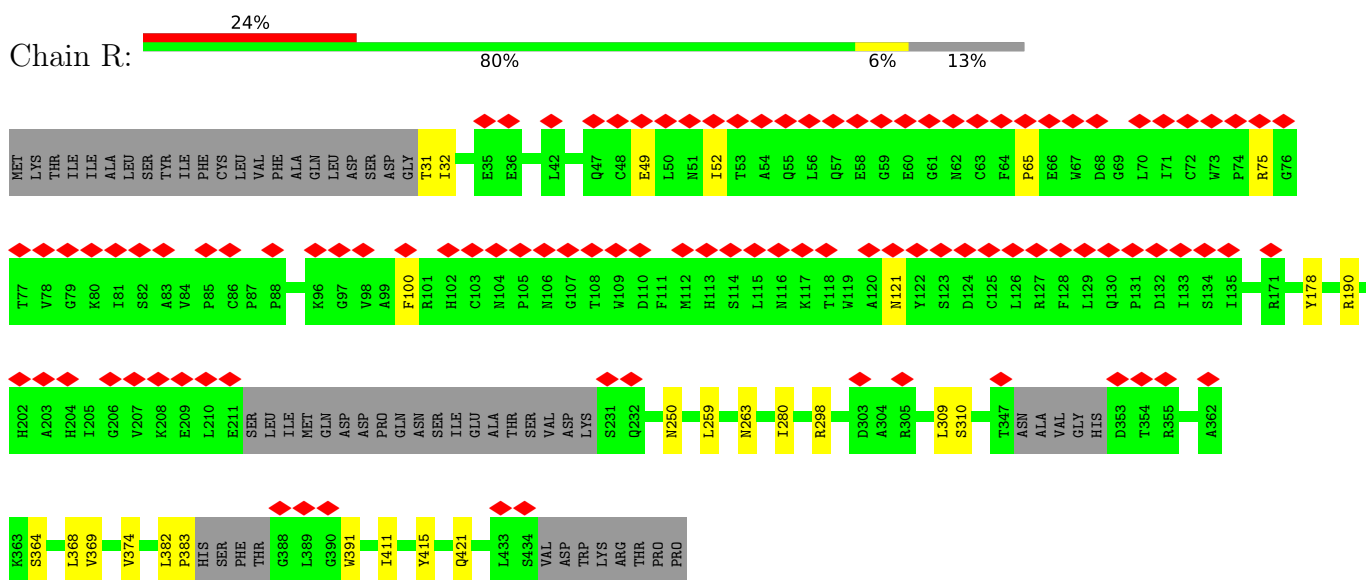


Mol	Chain	Residues	Atoms			AltConf
8	R	1	Total 18	C 16	O 2	0
8	R	1	Total 18	C 16	O 2	0
8	R	1	Total 18	C 16	O 2	0
8	R	1	Total 18	C 16	O 2	0
8	R	1	Total 18	C 16	O 2	0
8	R	1	Total 18	C 16	O 2	0

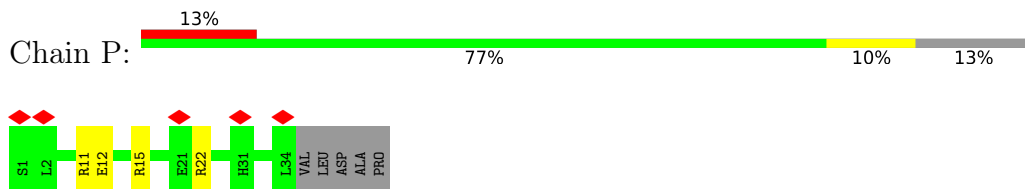
3 Residue-property plots [i](#)

These plots are drawn for all protein, RNA, DNA and oligosaccharide chains in the entry. The first graphic for a chain summarises the proportions of the various outlier classes displayed in the second graphic. The second graphic shows the sequence view annotated by issues in geometry and atom inclusion in map density. Residues are color-coded according to the number of geometric quality criteria for which they contain at least one outlier: green = 0, yellow = 1, orange = 2 and red = 3 or more. A red diamond above a residue indicates a poor fit to the EM map for this residue (all-atom inclusion < 40%). Stretches of 2 or more consecutive residues without any outlier are shown as a green connector. Residues present in the sample, but not in the model, are shown in grey.

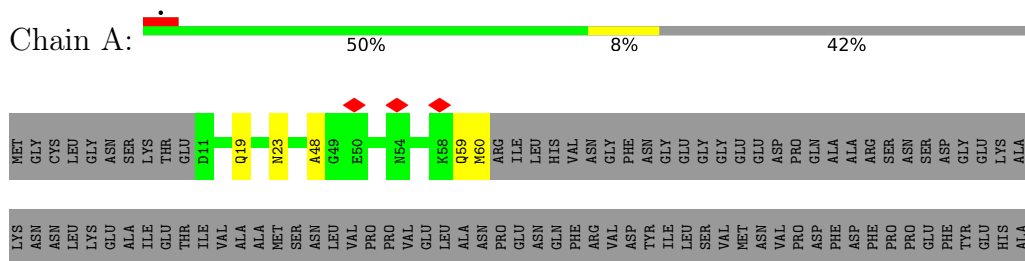
- Molecule 1: Parathyroid hormone 2 receptor

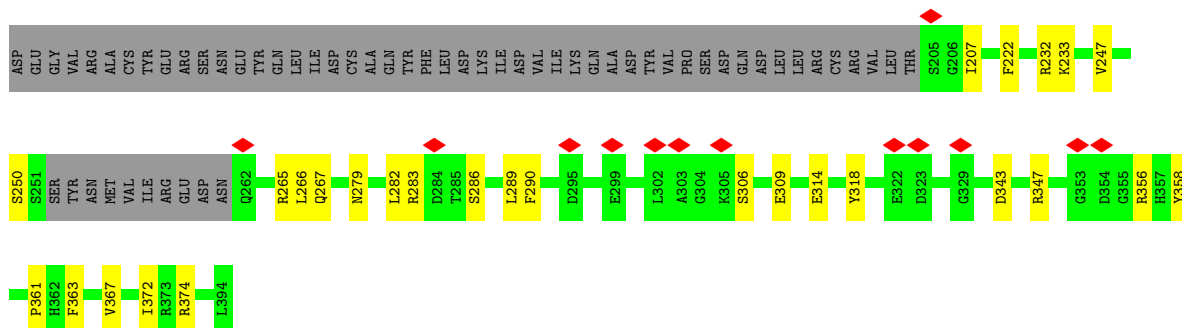


- Molecule 2: Tuberoinfundibular peptide of 39 residues

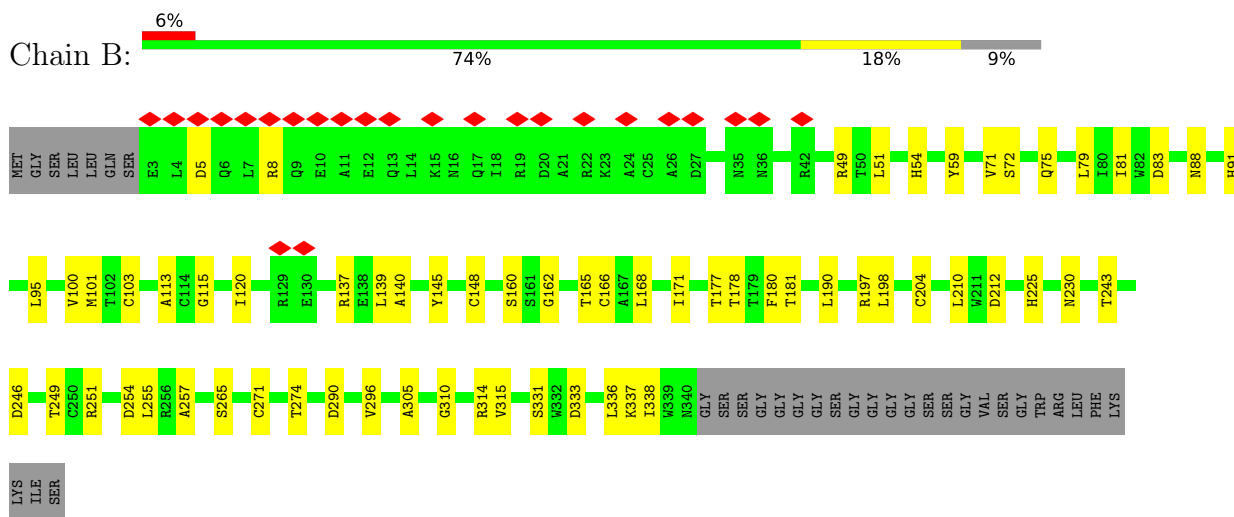


- Molecule 3: Guanine nucleotide-binding protein G(s) subunit alpha isoforms short

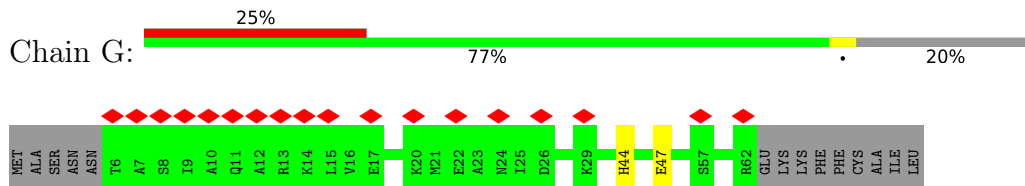




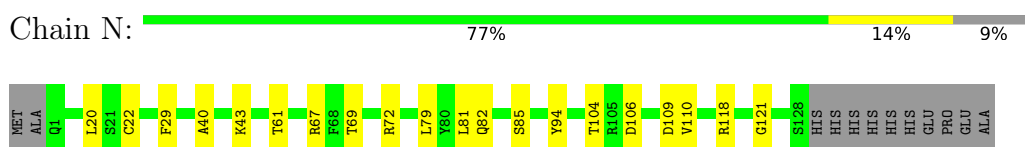
• Molecule 4: Guanine nucleotide-binding protein G(I)/G(S)/G(T) subunit beta-1



• Molecule 5: Guanine nucleotide-binding protein G(I)/G(S)/G(O) subunit gamma-2



• Molecule 6: Nanobody-35



4 Experimental information

Property	Value	Source
EM reconstruction method	SINGLE PARTICLE	Depositor
Imposed symmetry	POINT, Not provided	
Number of particles used	301769	Depositor
Resolution determination method	FSC 0.143 CUT-OFF	Depositor
CTF correction method	PHASE FLIPPING AND AMPLITUDE CORRECTION	Depositor
Microscope	FEI TITAN KRIOS	Depositor
Voltage (kV)	300	Depositor
Electron dose ($e^-/\text{\AA}^2$)	80	Depositor
Minimum defocus (nm)	Not provided	
Maximum defocus (nm)	Not provided	
Magnification	Not provided	
Image detector	GATAN K3 (6k x 4k)	Depositor
Maximum map value	0.867	Depositor
Minimum map value	-0.402	Depositor
Average map value	0.001	Depositor
Map value standard deviation	0.023	Depositor
Recommended contour level	0.12	Depositor
Map size (\AA)	234.07999, 234.07999, 234.07999	wwPDB
Map dimensions	224, 224, 224	wwPDB
Map angles ($^\circ$)	90.0, 90.0, 90.0	wwPDB
Pixel spacing (\AA)	1.045, 1.045, 1.045	Depositor

5 Model quality [i](#)

5.1 Standard geometry [i](#)

Bond lengths and bond angles in the following residue types are not validated in this section: PLM, CLR

The Z score for a bond length (or angle) is the number of standard deviations the observed value is removed from the expected value. A bond length (or angle) with $|Z| > 5$ is considered an outlier worth inspection. RMSZ is the root-mean-square of all Z scores of the bond lengths (or angles).

Mol	Chain	Bond lengths		Bond angles	
		RMSZ	# Z >5	RMSZ	# Z >5
1	R	0.23	0/3165	0.52	0/4299
2	P	0.19	0/287	0.47	0/385
3	A	0.18	0/1940	0.45	0/2606
4	B	0.19	0/2647	0.54	0/3589
5	G	0.16	0/442	0.47	0/597
6	N	0.18	0/993	0.51	0/1345
All	All	0.20	0/9474	0.51	0/12821

There are no bond length outliers.

There are no bond angle outliers.

There are no chirality outliers.

There are no planarity outliers.

5.2 Too-close contacts [i](#)

In the following table, the Non-H and H(model) columns list the number of non-hydrogen atoms and hydrogen atoms in the chain respectively. The H(added) column lists the number of hydrogen atoms added and optimized by MolProbity. The Clashes column lists the number of clashes within the asymmetric unit, whereas Symm-Clashes lists symmetry-related clashes.

Mol	Chain	Non-H	H(model)	H(added)	Clashes	Symm-Clashes
1	R	3072	0	3049	16	0
2	P	282	0	290	5	0
3	A	1905	0	1888	21	0
4	B	2600	0	2505	39	0
5	G	436	0	448	1	0
6	N	973	0	938	11	0
7	R	112	0	184	3	0

Continued on next page...

Continued from previous page...

Mol	Chain	Non-H	H(model)	H(added)	Clashes	Symm-Clashes
8	R	108	0	186	0	0
All	All	9488	0	9488	86	0

The all-atom clashscore is defined as the number of clashes found per 1000 atoms (including hydrogen atoms). The all-atom clashscore for this structure is 5.

The worst 5 of 86 close contacts within the same asymmetric unit are listed below, sorted by their clash magnitude.

Atom-1	Atom-2	Interatomic distance (Å)	Clash overlap (Å)
4:B:271:CYS:HB3	4:B:290:ASP:HB3	1.74	0.69
4:B:71:VAL:HG22	4:B:81:ILE:HG12	1.81	0.61
4:B:51:LEU:HB2	4:B:336:LEU:HB2	1.82	0.60
4:B:225:HIS:NE2	4:B:243:THR:OG1	2.33	0.60
1:R:259:LEU:O	1:R:263:ASN:ND2	2.35	0.59

There are no symmetry-related clashes.

5.3 Torsion angles [i](#)

5.3.1 Protein backbone [i](#)

In the following table, the Percentiles column shows the percent Ramachandran outliers of the chain as a percentile score with respect to all PDB entries followed by that with respect to all EM entries.

The Analysed column shows the number of residues for which the backbone conformation was analysed, and the total number of residues.

Mol	Chain	Analysed	Favoured	Allowed	Outliers	Percentiles	
1	R	368/434 (85%)	364 (99%)	4 (1%)	0	100	100
2	P	32/39 (82%)	31 (97%)	1 (3%)	0	100	100
3	A	224/394 (57%)	221 (99%)	3 (1%)	0	100	100
4	B	336/371 (91%)	329 (98%)	7 (2%)	0	100	100
5	G	55/71 (78%)	55 (100%)	0	0	100	100
6	N	126/140 (90%)	122 (97%)	4 (3%)	0	100	100
All	All	1141/1449 (79%)	1122 (98%)	19 (2%)	0	100	100

There are no Ramachandran outliers to report.

5.3.2 Protein sidechains [i](#)

In the following table, the Percentiles column shows the percent sidechain outliers of the chain as a percentile score with respect to all PDB entries followed by that with respect to all EM entries.

The Analysed column shows the number of residues for which the sidechain conformation was analysed, and the total number of residues.

Mol	Chain	Analysed	Rotameric	Outliers	Percentiles	
1	R	324/376 (86%)	324 (100%)	0	100	100
2	P	27/31 (87%)	27 (100%)	0	100	100
3	A	205/349 (59%)	205 (100%)	0	100	100
4	B	281/302 (93%)	281 (100%)	0	100	100
5	G	46/58 (79%)	46 (100%)	0	100	100
6	N	106/116 (91%)	106 (100%)	0	100	100
All	All	989/1232 (80%)	989 (100%)	0	100	100

There are no protein residues with a non-rotameric sidechain to report.

Sometimes sidechains can be flipped to improve hydrogen bonding and reduce clashes. 5 of 12 such sidechains are listed below:

Mol	Chain	Res	Type
4	B	268	ASN
5	G	18	GLN
6	N	82	GLN
6	N	13	GLN
3	A	384	GLN

5.3.3 RNA [i](#)

There are no RNA molecules in this entry.

5.4 Non-standard residues in protein, DNA, RNA chains [i](#)

There are no non-standard protein/DNA/RNA residues in this entry.

5.5 Carbohydrates [i](#)

There are no oligosaccharides in this entry.

5.6 Ligand geometry

10 ligands are modelled in this entry.

In the following table, the Counts columns list the number of bonds (or angles) for which Mogul statistics could be retrieved, the number of bonds (or angles) that are observed in the model and the number of bonds (or angles) that are defined in the Chemical Component Dictionary. The Link column lists molecule types, if any, to which the group is linked. The Z score for a bond length (or angle) is the number of standard deviations the observed value is removed from the expected value. A bond length (or angle) with $|Z| > 2$ is considered an outlier worth inspection. RMSZ is the root-mean-square of all Z scores of the bond lengths (or angles).

Mol	Type	Chain	Res	Link	Bond lengths			Bond angles		
					Counts	RMSZ	# Z > 2	Counts	RMSZ	# Z > 2
8	PLM	R	506	-	17,17,17	0.58	0	17,17,17	0.72	0
8	PLM	R	509	-	17,17,17	0.59	0	17,17,17	0.73	0
7	CLR	R	503	-	31,31,31	0.61	0	48,48,48	1.32	8 (16%)
7	CLR	R	501	-	31,31,31	0.63	1 (3%)	48,48,48	1.47	5 (10%)
7	CLR	R	502	-	31,31,31	0.63	0	48,48,48	1.26	6 (12%)
7	CLR	R	504	-	31,31,31	0.63	0	48,48,48	1.45	6 (12%)
8	PLM	R	507	-	17,17,17	0.58	0	17,17,17	0.73	0
8	PLM	R	505	-	17,17,17	0.58	0	17,17,17	0.73	0
8	PLM	R	508	-	17,17,17	0.59	0	17,17,17	0.72	0
8	PLM	R	510	-	17,17,17	0.59	0	17,17,17	0.72	0

In the following table, the Chirals column lists the number of chiral outliers, the number of chiral centers analysed, the number of these observed in the model and the number defined in the Chemical Component Dictionary. Similar counts are reported in the Torsion and Rings columns. '-' means no outliers of that kind were identified.

Mol	Type	Chain	Res	Link	Chirals	Torsions	Rings
8	PLM	R	506	-	-	2/15/15/15	-
8	PLM	R	509	-	-	2/15/15/15	-
7	CLR	R	503	-	-	4/10/68/68	0/4/4/4
7	CLR	R	501	-	-	6/10/68/68	0/4/4/4
7	CLR	R	502	-	-	6/10/68/68	0/4/4/4
7	CLR	R	504	-	-	6/10/68/68	0/4/4/4
8	PLM	R	507	-	-	2/15/15/15	-
8	PLM	R	505	-	-	2/15/15/15	-
8	PLM	R	508	-	-	3/15/15/15	-
8	PLM	R	510	-	-	2/15/15/15	-

All (1) bond length outliers are listed below:

Mol	Chain	Res	Type	Atoms	Z	Observed(Å)	Ideal(Å)
7	R	501	CLR	C10-C9	-2.03	1.52	1.56

The worst 5 of 25 bond angle outliers are listed below:

Mol	Chain	Res	Type	Atoms	Z	Observed(°)	Ideal(°)
7	R	501	CLR	C13-C17-C20	-4.30	112.86	119.50
7	R	504	CLR	C13-C17-C20	-3.93	113.43	119.50
7	R	503	CLR	C13-C17-C20	-3.25	114.48	119.50
7	R	504	CLR	C19-C10-C9	-2.96	108.34	111.66
7	R	502	CLR	C13-C17-C20	-2.94	114.96	119.50

There are no chirality outliers.

5 of 35 torsion outliers are listed below:

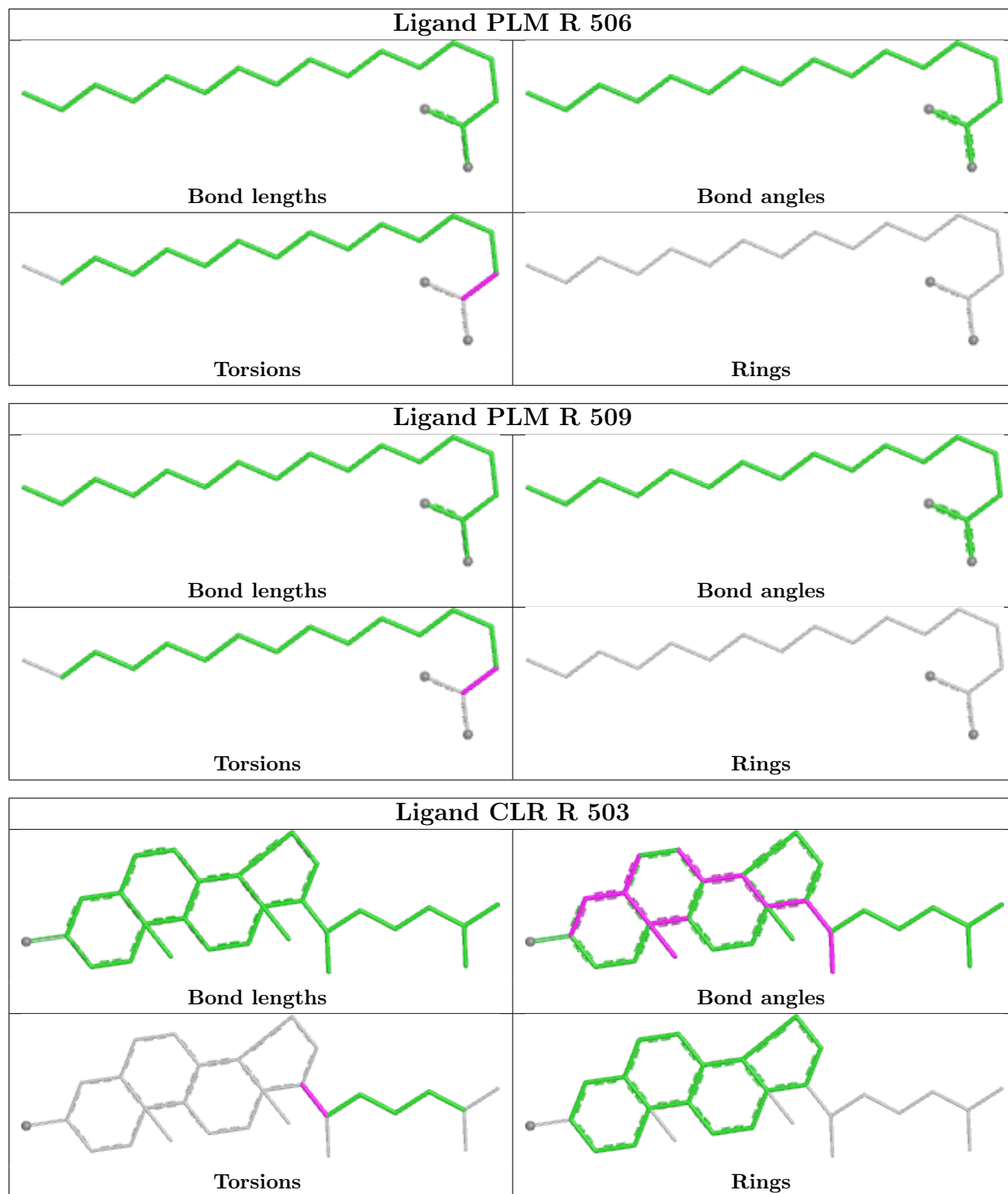
Mol	Chain	Res	Type	Atoms
7	R	501	CLR	C16-C17-C20-C21
7	R	501	CLR	C13-C17-C20-C21
7	R	504	CLR	C13-C17-C20-C21
7	R	503	CLR	C16-C17-C20-C21
7	R	504	CLR	C16-C17-C20-C21

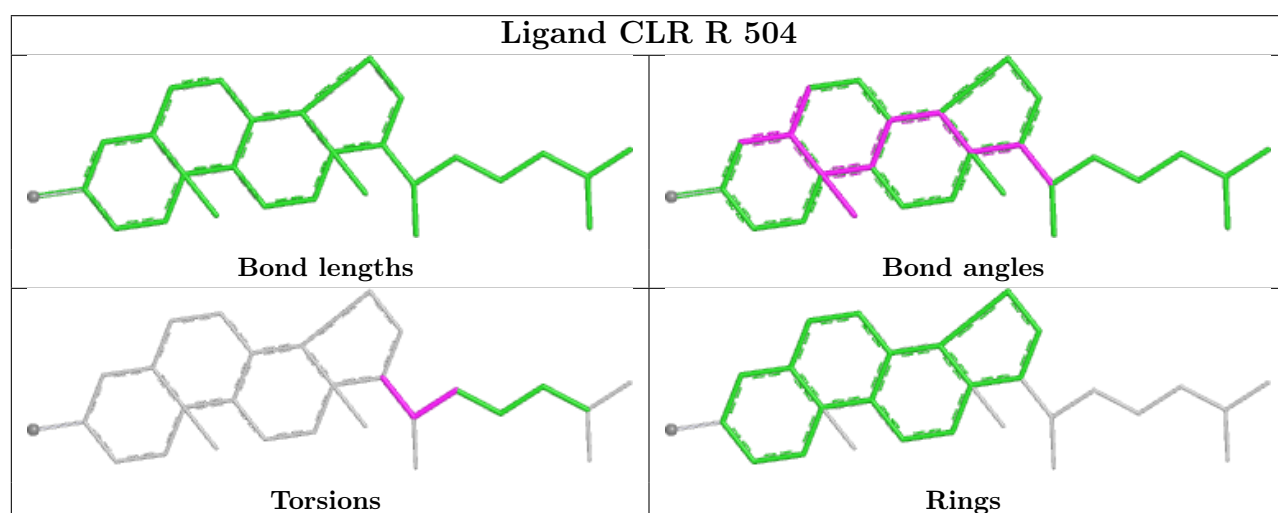
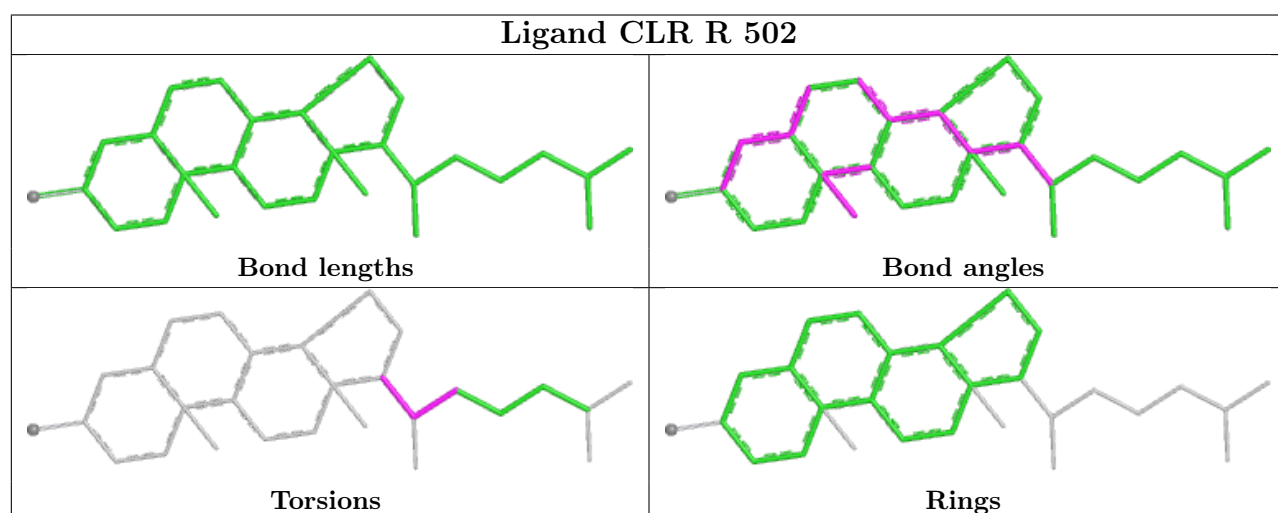
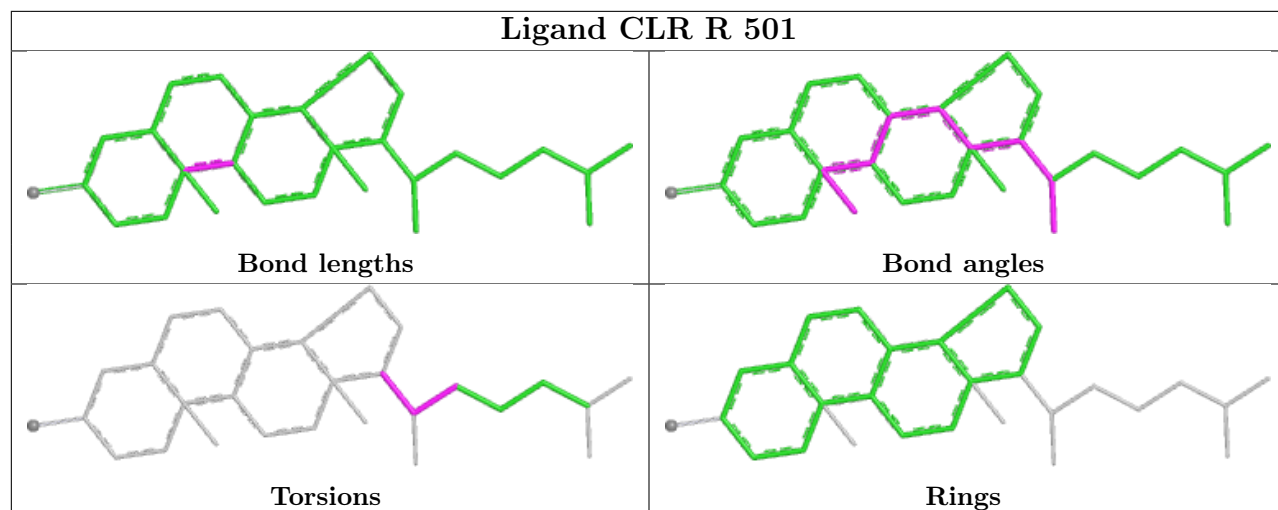
There are no ring outliers.

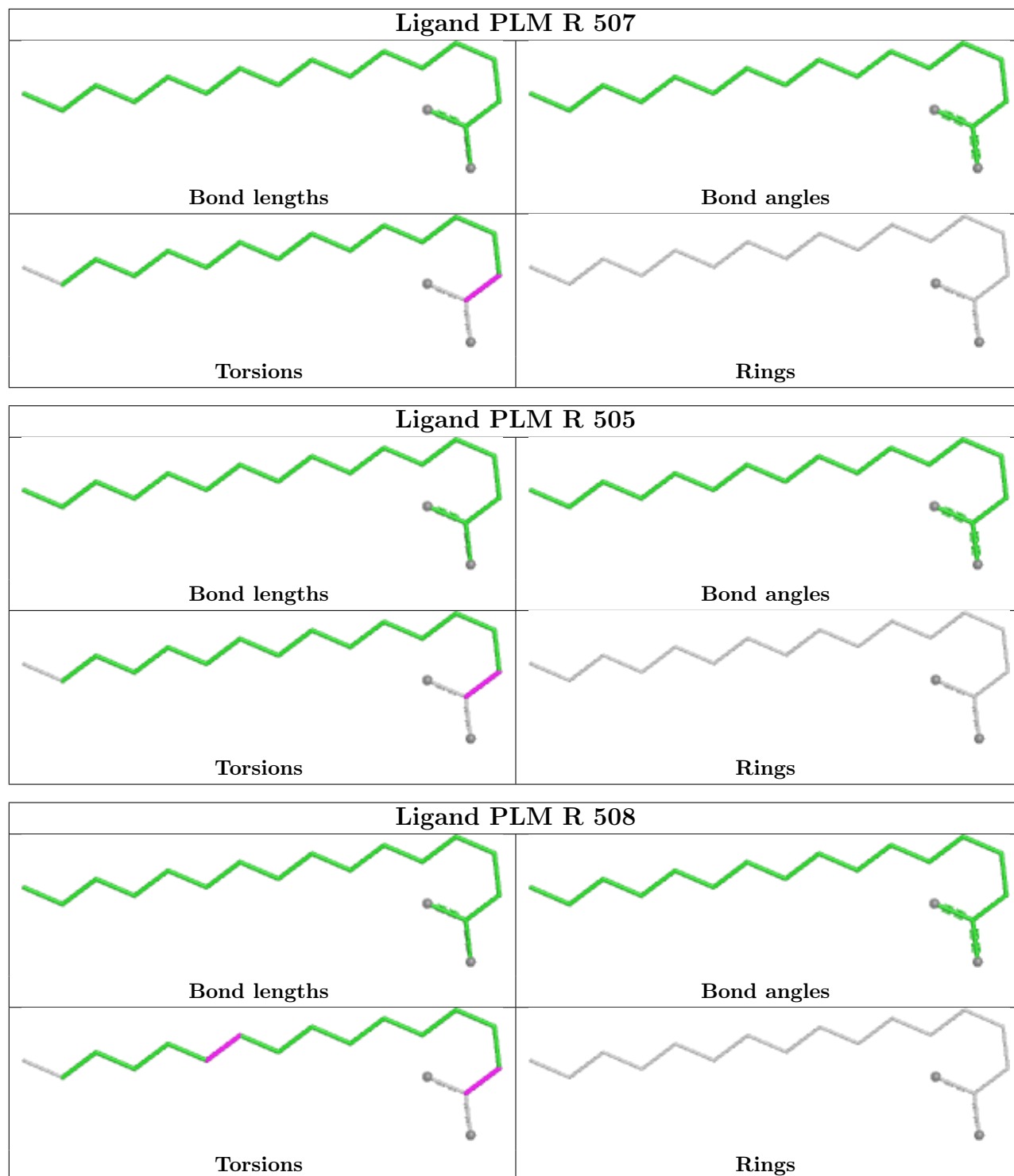
3 monomers are involved in 3 short contacts:

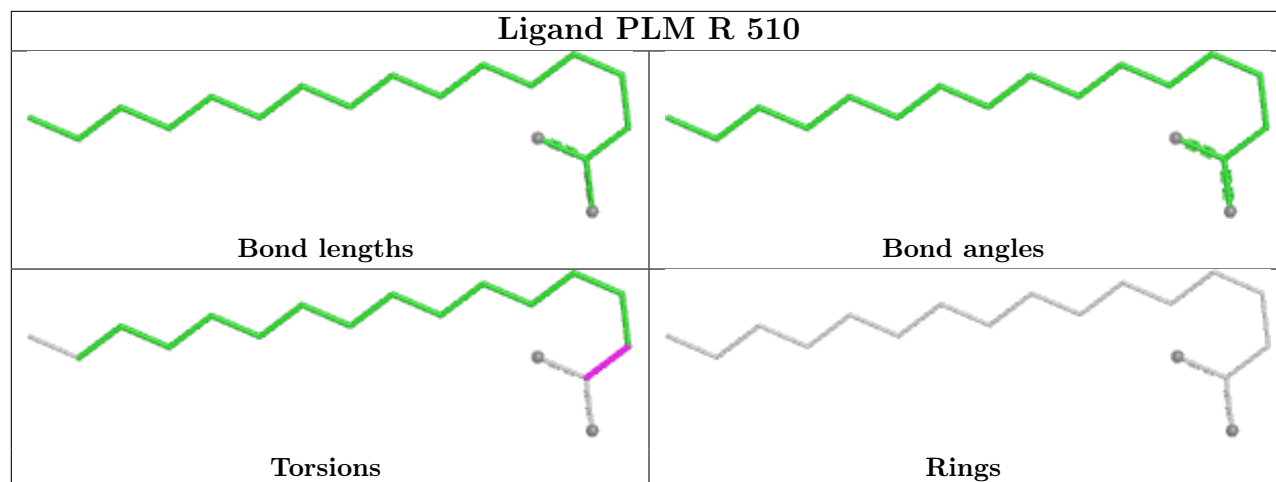
Mol	Chain	Res	Type	Clashes	Symm-Clashes
7	R	503	CLR	1	0
7	R	501	CLR	1	0
7	R	504	CLR	1	0

The following is a two-dimensional graphical depiction of Mogul quality analysis of bond lengths, bond angles, torsion angles, and ring geometry for all instances of the Ligand of Interest. In addition, ligands with molecular weight > 250 and outliers as shown on the validation Tables will also be included. For torsion angles, if less than 5% of the Mogul distribution of torsion angles is within 10 degrees of the torsion angle in question, then that torsion angle is considered an outlier. Any bond that is central to one or more torsion angles identified as an outlier by Mogul will be highlighted in the graph. For rings, the root-mean-square deviation (RMSD) between the ring in question and similar rings identified by Mogul is calculated over all ring torsion angles. If the average RMSD is greater than 60 degrees and the minimal RMSD between the ring in question and any Mogul-identified rings is also greater than 60 degrees, then that ring is considered an outlier. The outliers are highlighted in purple. The color gray indicates Mogul did not find sufficient equivalents in the CSD to analyse the geometry.









5.7 Other polymers [i](#)

There are no such residues in this entry.

5.8 Polymer linkage issues [i](#)

There are no chain breaks in this entry.

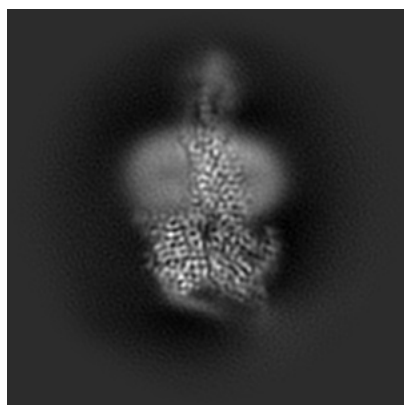
6 Map visualisation [i](#)

This section contains visualisations of the EMDB entry EMD-31405. These allow visual inspection of the internal detail of the map and identification of artifacts.

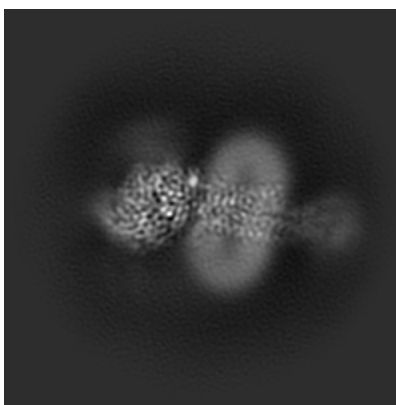
No raw map or half-maps were deposited for this entry and therefore no images, graphs, etc. pertaining to the raw map can be shown.

6.1 Orthogonal projections [i](#)

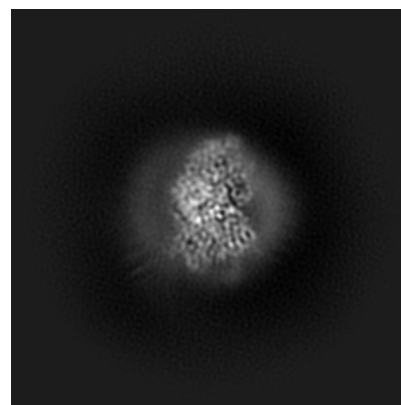
6.1.1 Primary map



X



Y

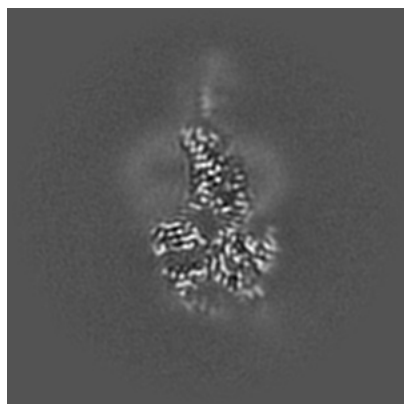


Z

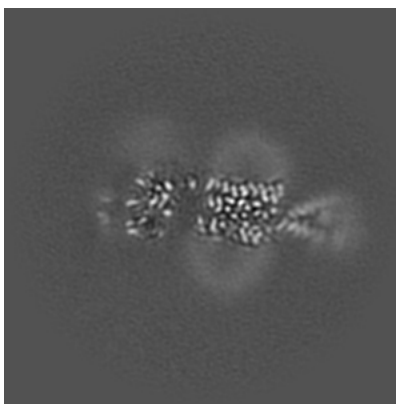
The images above show the map projected in three orthogonal directions.

6.2 Central slices [i](#)

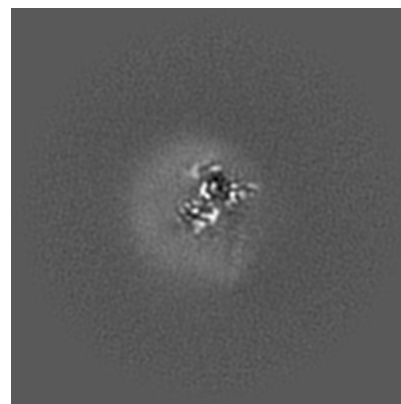
6.2.1 Primary map



X Index: 112



Y Index: 112

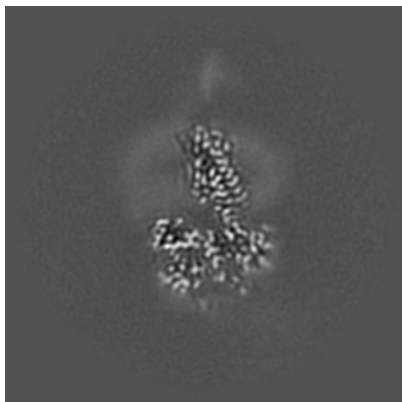


Z Index: 112

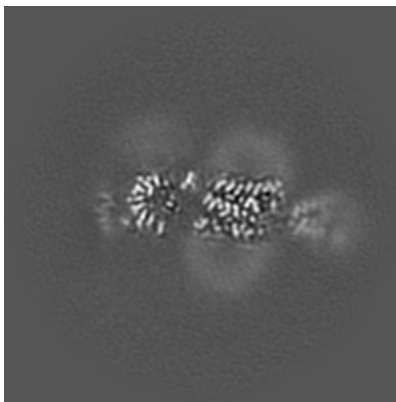
The images above show central slices of the map in three orthogonal directions.

6.3 Largest variance slices [\(i\)](#)

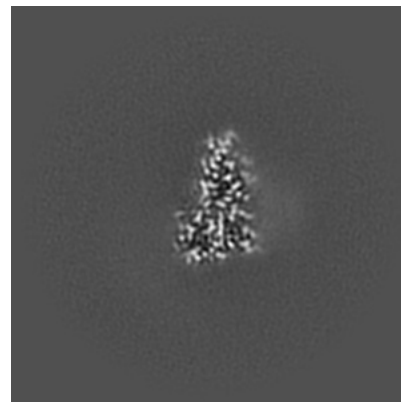
6.3.1 Primary map



X Index: 117



Y Index: 110

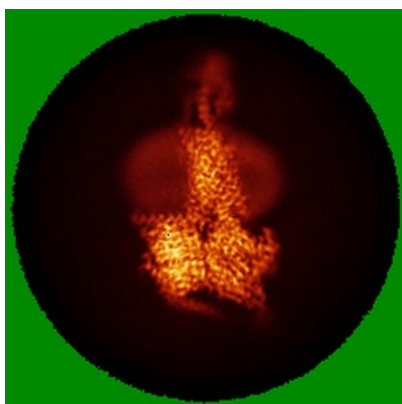


Z Index: 90

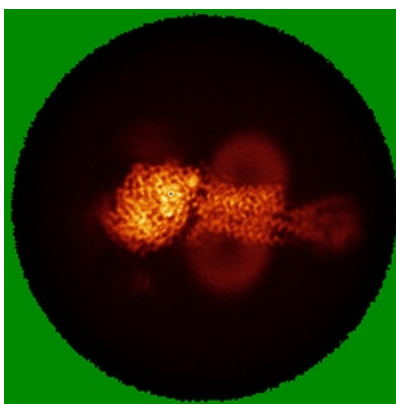
The images above show the largest variance slices of the map in three orthogonal directions.

6.4 Orthogonal standard-deviation projections (False-color) [\(i\)](#)

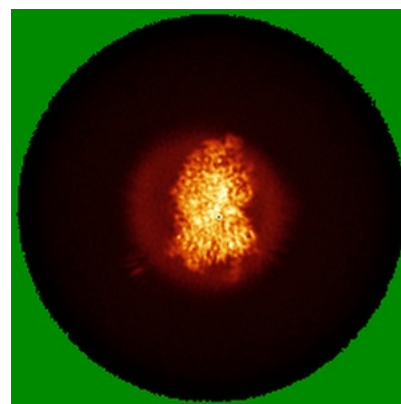
6.4.1 Primary map



X



Y

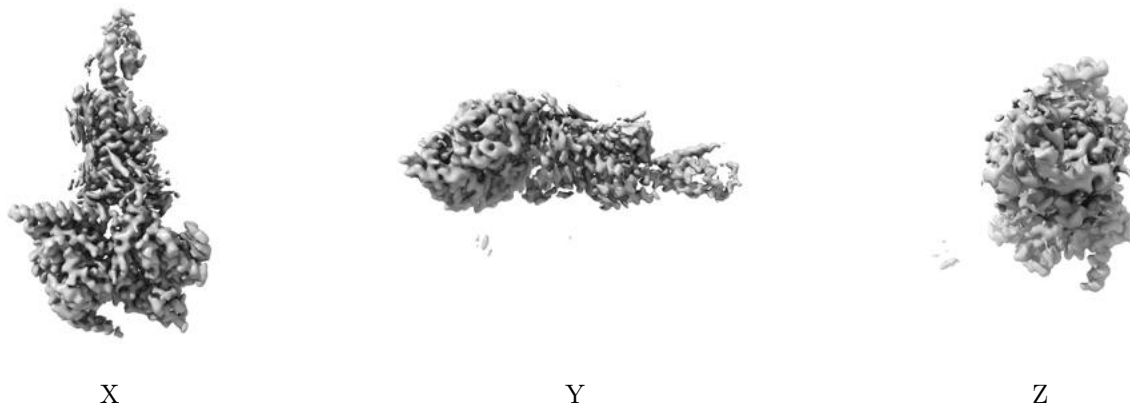


Z

The images above show the map standard deviation projections with false color in three orthogonal directions. Minimum values are shown in green, max in blue, and dark to light orange shades represent small to large values respectively.

6.5 Orthogonal surface views [i](#)

6.5.1 Primary map



The images above show the 3D surface view of the map at the recommended contour level 0.12. These images, in conjunction with the slice images, may facilitate assessment of whether an appropriate contour level has been provided.

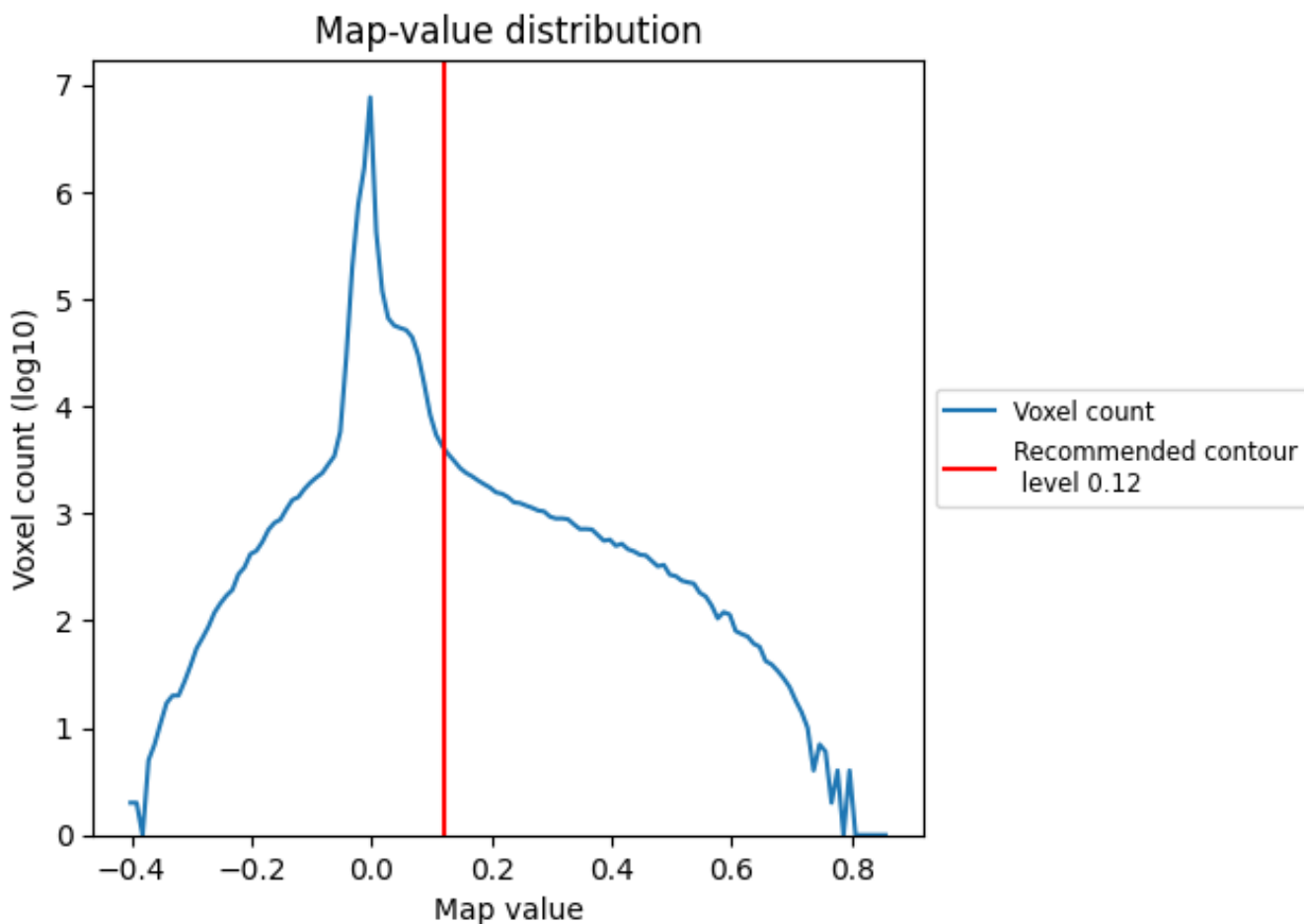
6.6 Mask visualisation [i](#)

This section was not generated. No masks/segmentation were deposited.

7 Map analysis [i](#)

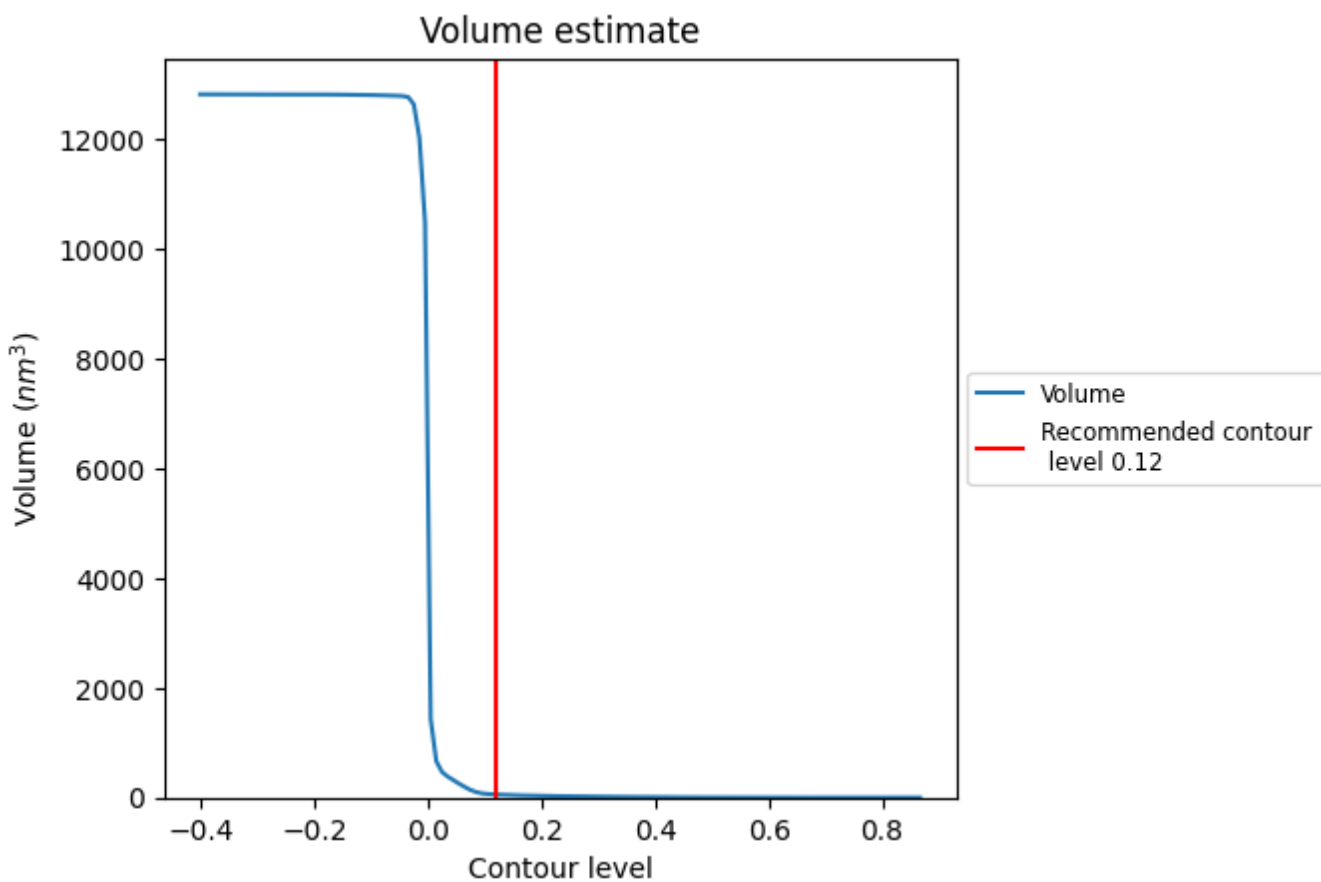
This section contains the results of statistical analysis of the map.

7.1 Map-value distribution [i](#)



The map-value distribution is plotted in 128 intervals along the x-axis. The y-axis is logarithmic. A spike in this graph at zero usually indicates that the volume has been masked.

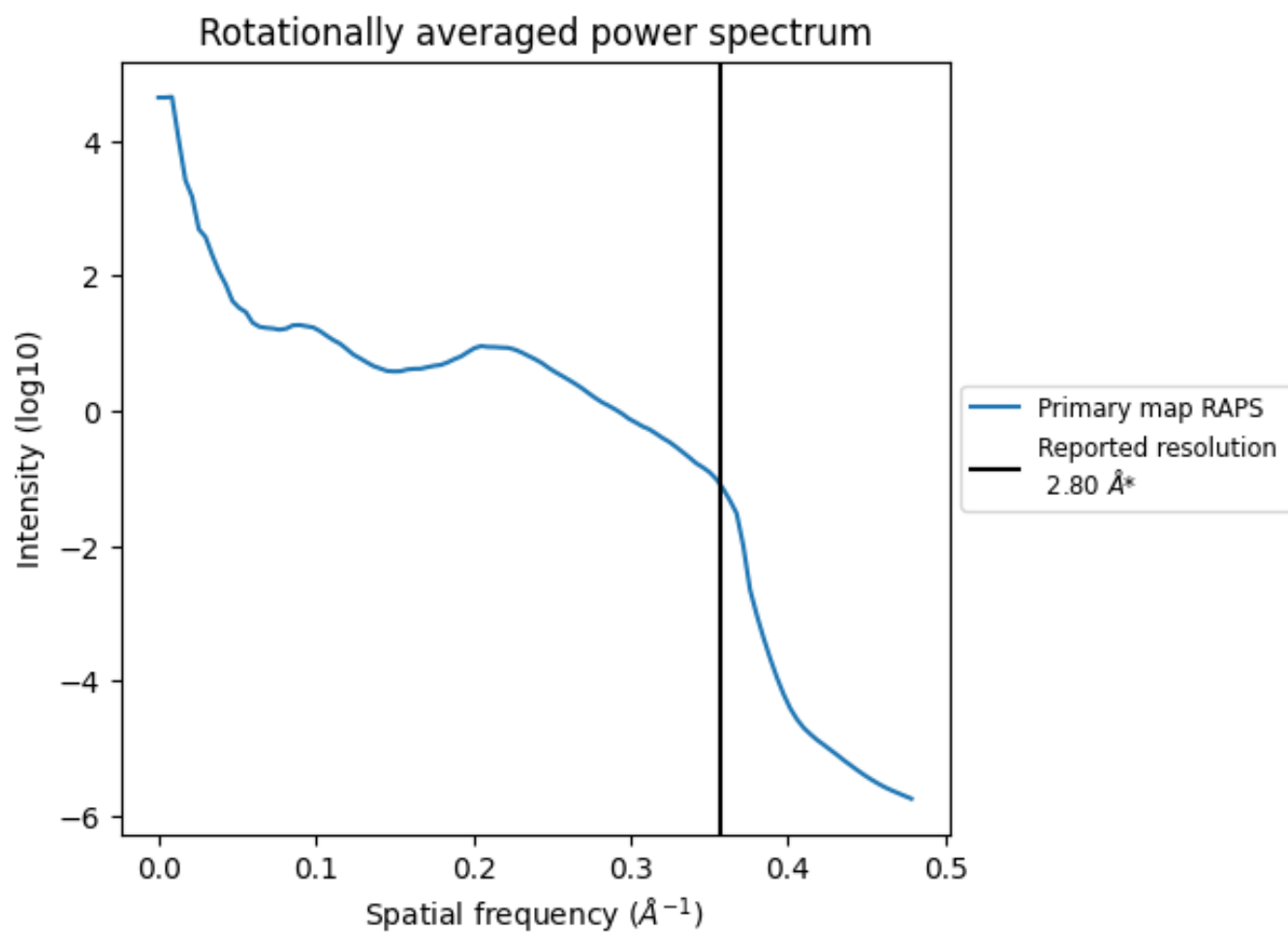
7.2 Volume estimate [\(i\)](#)



The volume at the recommended contour level is 56 nm³; this corresponds to an approximate mass of 50 kDa.

The volume estimate graph shows how the enclosed volume varies with the contour level. The recommended contour level is shown as a vertical line and the intersection between the line and the curve gives the volume of the enclosed surface at the given level.

7.3 Rotationally averaged power spectrum [i](#)



*Reported resolution corresponds to spatial frequency of 0.357 \AA^{-1}

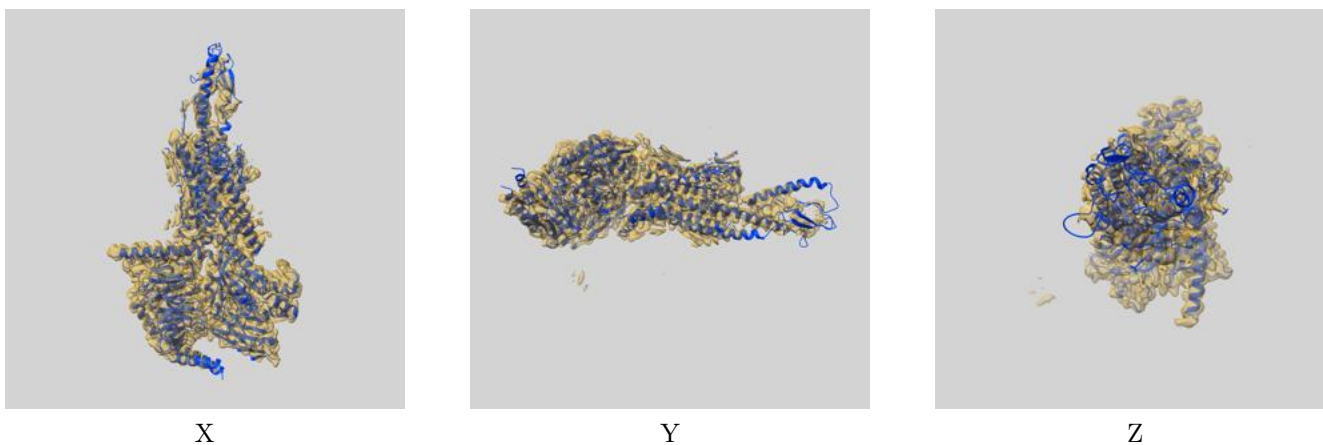
8 Fourier-Shell correlation

This section was not generated. No FSC curve or half-maps provided.

9 Map-model fit [i](#)

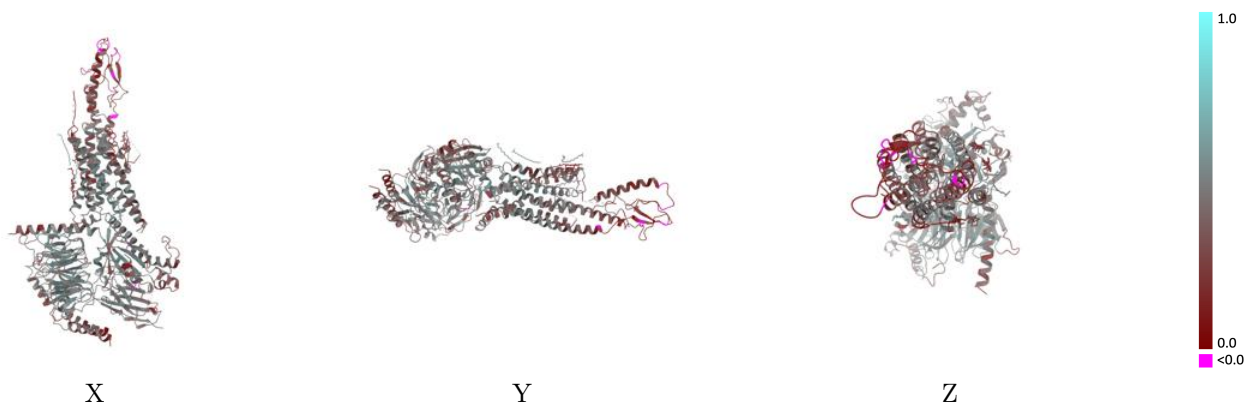
This section contains information regarding the fit between EMDB map EMD-31405 and PDB model 7F16. Per-residue inclusion information can be found in section 3 on page 9.

9.1 Map-model overlay [i](#)



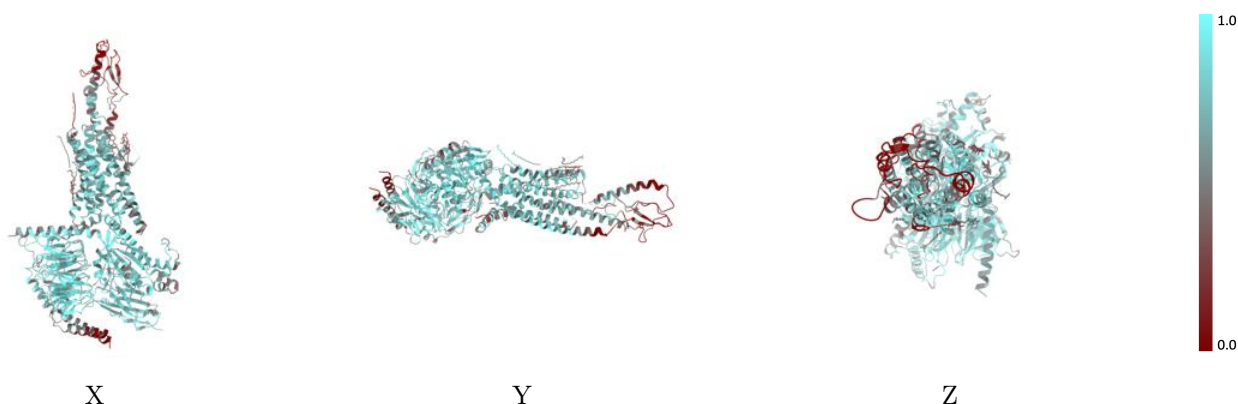
The images above show the 3D surface view of the map at the recommended contour level 0.12 at 50% transparency in yellow overlaid with a ribbon representation of the model coloured in blue. These images allow for the visual assessment of the quality of fit between the atomic model and the map.

9.2 Q-score mapped to coordinate model [i](#)



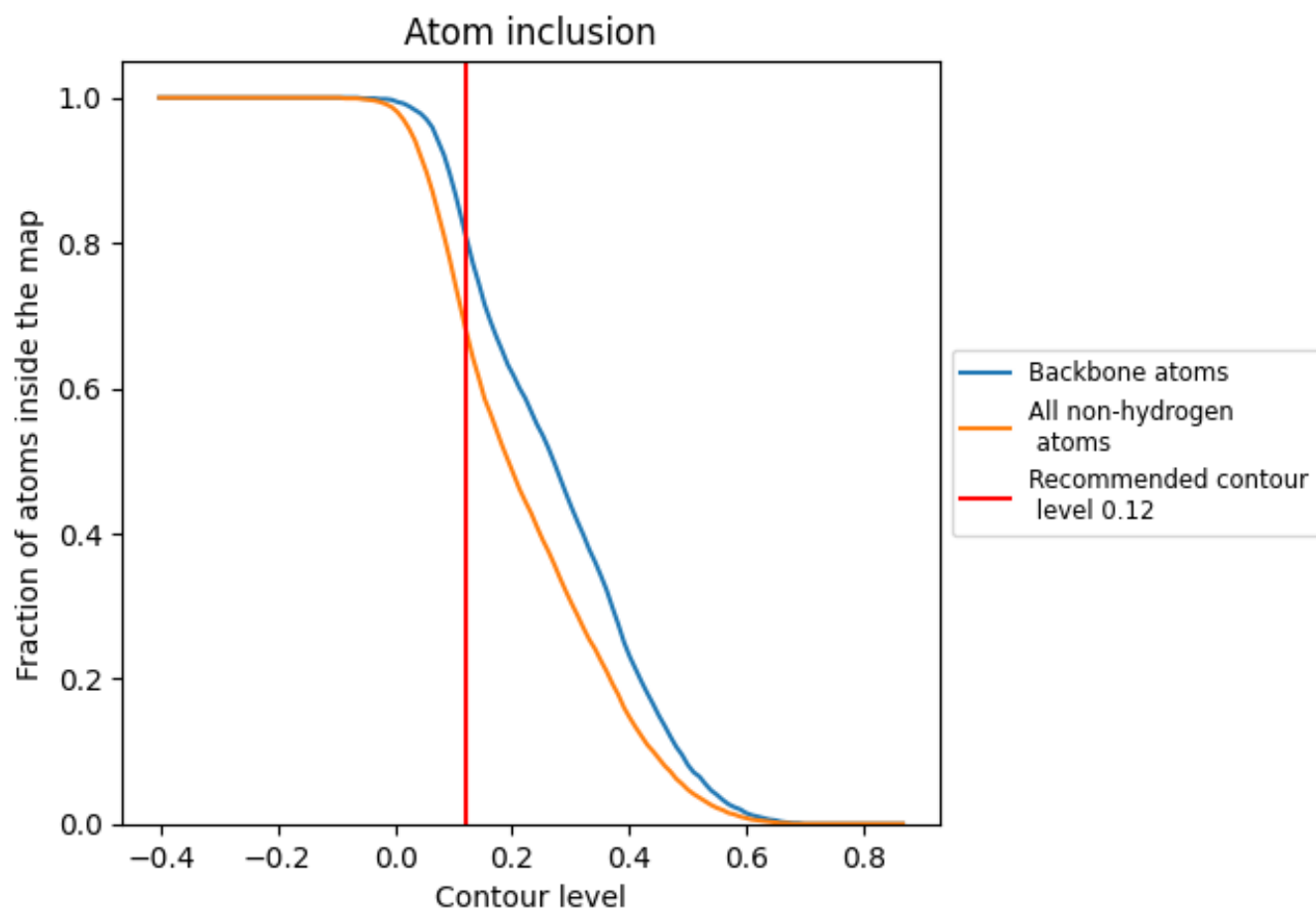
The images above show the model with each residue coloured according its Q-score. This shows their resolvability in the map with higher Q-score values reflecting better resolvability. Please note: Q-score is calculating the resolvability of atoms, and thus high values are only expected at resolutions at which atoms can be resolved. Low Q-score values may therefore be expected for many entries.

9.3 Atom inclusion mapped to coordinate model [i](#)



The images above show the model with each residue coloured according to its atom inclusion. This shows to what extent they are inside the map at the recommended contour level (0.12).















9.4 Atom inclusion [i](#)



At the recommended contour level, 81% of all backbone atoms, 68% of all non-hydrogen atoms, are inside the map.

9.5 Map-model fit summary

The table lists the average atom inclusion at the recommended contour level (0.12) and Q-score for the entire model and for each chain.

Chain	Atom inclusion	Q-score
All	 0.6830	 0.4150
A	 0.7460	 0.4250
B	 0.7660	 0.4660
G	 0.5360	 0.3510
N	 0.7970	 0.4590
P	 0.6370	 0.3660
R	 0.5720	 0.3680

