



Full wwPDB X-ray Structure Validation Report ⓘ

Mar 5, 2026 – 05:55 AM UTC

PDB ID : 4F2A / pdb_00004f2a
Title : Crystal structure of cholesteryl esters transfer protein in complex with inhibitors
Authors : Liu, S.; Qiu, X.
Deposited on : 2012-05-07
Resolution : 3.11 Å(reported)

This is a Full wwPDB X-ray Structure Validation Report for a publicly released PDB entry.

We welcome your comments at validation@mail.wwpdb.org

A user guide is available at

<https://www.wwpdb.org/validation/2017/XrayValidationReportHelp>

with specific help available everywhere you see the ⓘ symbol.

The types of validation reports are described at

<http://www.wwpdb.org/validation/2017/FAQs#types>.

The following versions of software and data (see [references ⓘ](#)) were used in the production of this report:

MolProbity : 4-5-2 with Phenix2.0
Mogul : 2022.3.0, CSD as543be (2022)
Xtriage (Phenix) : 2.0
EDS : 3.0
Buster-report : wwPDB partial adaption of 1.1.7 (2018)
Percentile statistics : 20250101.v01 (using entries in the PDB archive January 1st 2025)
CCP4 : 9.0.010 (Gargrove)
Density-Fitness : 1.0.12
Ideal geometry (proteins) : Engh & Huber (2001)
Ideal geometry (DNA, RNA) : Parkinson et al. (1996)
Validation Pipeline (wwPDB-VP) : 2.49

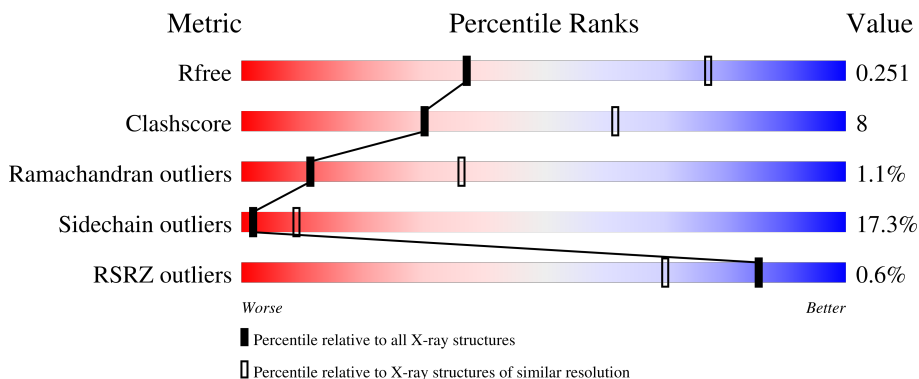
1 Overall quality at a glance

The following experimental techniques were used to determine the structure:

X-RAY DIFFRACTION

The reported resolution of this entry is 3.11 Å.

Percentile scores (ranging between 0-100) for global validation metrics of the entry are shown in the following graphic. The table shows the number of entries on which the scores are based.



Metric	Whole archive (#Entries)	Similar resolution (#Entries, resolution range(Å))
R_{free}	180053	1816 (3.14-3.10)
Clashscore	190562	1906 (3.14-3.10)
Ramachandran outliers	187476	1802 (3.14-3.10)
Sidechain outliers	187428	1802 (3.14-3.10)
RSRZ outliers	180081	1816 (3.14-3.10)

The table below summarises the geometric issues observed across the polymeric chains and their fit to the electron density. The red, orange, yellow and green segments of the lower bar indicate the fraction of residues that contain outliers for ≥ 3 , 2, 1 and 0 types of geometric quality criteria respectively. A grey segment represents the fraction of residues that are not modelled. The numeric value for each fraction is indicated below the corresponding segment, with a dot representing fractions $\leq 5\%$. The upper red bar (where present) indicates the fraction of residues that have poor fit to the electron density. The numeric value is given above the bar.

Mol	Chain	Length	Quality of chain
1	A	476	 % 65% 28% 6% .
2	B	4	 100%

2 Entry composition [i](#)

There are 7 unique types of molecules in this entry. The entry contains 3967 atoms, of which 21 are hydrogens and 0 are deuteriums.

In the tables below, the ZeroOcc column contains the number of atoms modelled with zero occupancy, the AltConf column contains the number of residues with at least one atom in alternate conformation and the Trace column contains the number of residues modelled with at most 2 atoms.

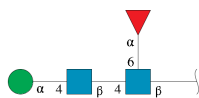
- Molecule 1 is a protein called Cholesteryl ester transfer protein.

Mol	Chain	Residues	Atoms					ZeroOcc	AltConf	Trace
			Total	C	N	O	S			
1	A	472	3712	2390	603	702	17	0	0	0

There are 6 discrepancies between the modelled and reference sequences:

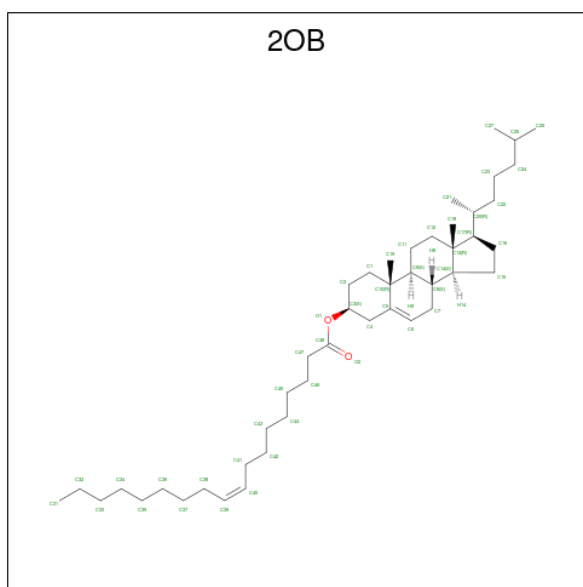
Chain	Residue	Modelled	Actual	Comment	Reference
A	1	ALA	CYS	engineered mutation	UNP P11597
A	88	ASP	ASN	engineered mutation	UNP P11597
A	131	ALA	CYS	engineered mutation	UNP P11597
A	240	ASP	ASN	engineered mutation	UNP P11597
A	341	ASP	ASN	engineered mutation	UNP P11597
A	405	ILE	VAL	engineered mutation	UNP P11597

- Molecule 2 is an oligosaccharide called alpha-D-mannopyranose-(1-4)-2-acetamido-2-deoxy-beta-D-glucopyranose-(1-4)-[alpha-L-fucopyranose-(1-6)]2-acetamido-2-deoxy-beta-D-glucopyranose.



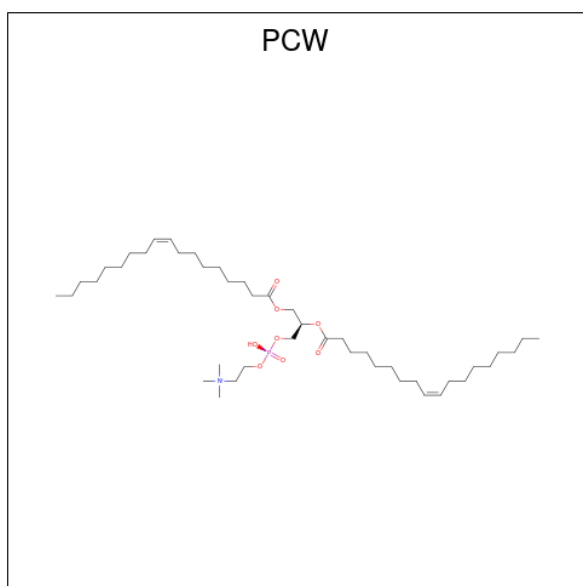
Mol	Chain	Residues	Atoms				ZeroOcc	AltConf	Trace
			Total	C	N	O			
2	B	4	49	28	2	19	0	0	0

- Molecule 3 is CHOLESTERYL OLEATE (CCD ID: 2OB) (formula: C₄₅H₇₈O₂).



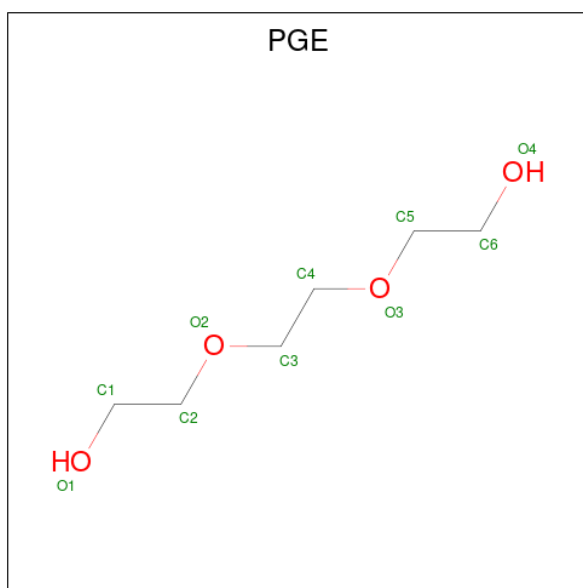
Mol	Chain	Residues	Atoms			ZeroOcc	AltConf
3	A	1	Total	C	O	0	0
			35	33	2		
3	A	1	Total	C	O	0	0
			47	45	2		

- Molecule 4 is 1,2-DIOLEOYL-SN-GLYCERO-3-PHOSPHOCHOLINE (CCD ID: PCW) (formula: $C_{44}H_{85}NO_8P$).



Mol	Chain	Residues	Atoms					ZeroOcc	AltConf
4	A	1	Total	C	N	O	P	0	0
			54	44	1	8	1		

- Molecule 5 is TRIETHYLENE GLYCOL (CCD ID: PGE) (formula: C₆H₁₄O₄).

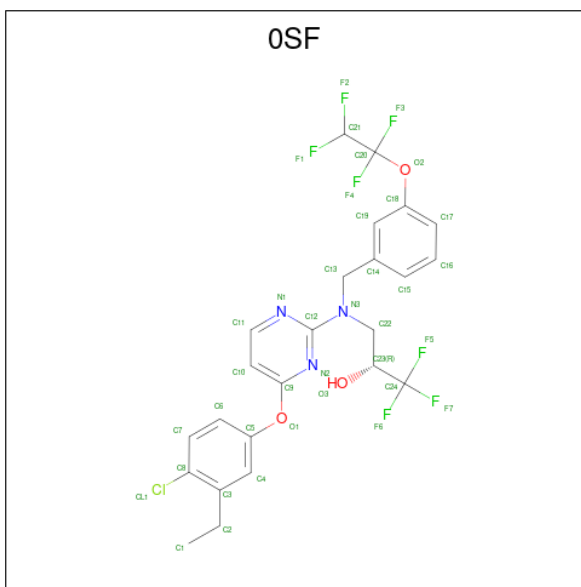


Mol	Chain	Residues	Atoms	ZeroOcc	AltConf
5	A	1	Total C O 10 6 4	0	0

- Molecule 6 is CHLORIDE ION (CCD ID: CL) (formula: Cl).

Mol	Chain	Residues	Atoms	ZeroOcc	AltConf
6	A	1	Total Cl 1 1	0	0

- Molecule 7 is (2R)-3-{{4-(4-chloro-3-ethylphenoxy)pyrimidin-2-yl}}[3-(1,1,2,2-tetrafluoroethoxy)benzyl]amino}-1,1,1-trifluoropropan-2-ol (CCD ID: 0SF) (formula: C₂₄H₂₁ClF₇N₃O₃).

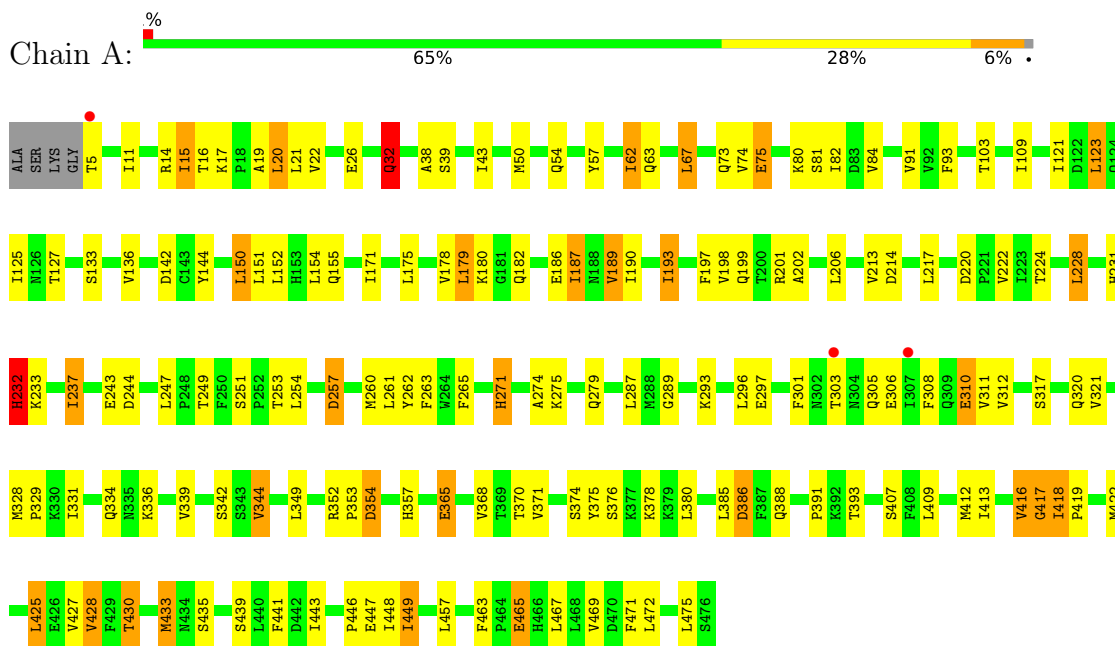


Mol	Chain	Residues	Atoms						ZeroOcc	AltConf	
			Total	C	Cl	F	H	N			O
7	A	1	59	24	1	7	21	3	3	21	0

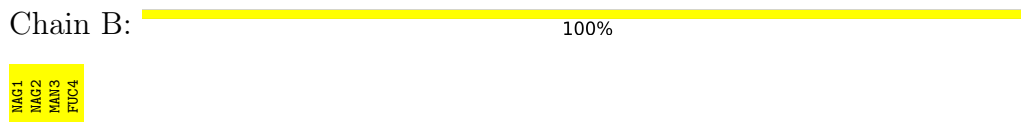
3 Residue-property plots

These plots are drawn for all protein, RNA, DNA and oligosaccharide chains in the entry. The first graphic for a chain summarises the proportions of the various outlier classes displayed in the second graphic. The second graphic shows the sequence view annotated by issues in geometry and electron density. Residues are color-coded according to the number of geometric quality criteria for which they contain at least one outlier: green = 0, yellow = 1, orange = 2 and red = 3 or more. A red dot above a residue indicates a poor fit to the electron density ($RSRZ > 2$). Stretches of 2 or more consecutive residues without any outlier are shown as a green connector. Residues present in the sample, but not in the model, are shown in grey.

- Molecule 1: Cholesteryl ester transfer protein



- Molecule 2: alpha-D-mannopyranose-(1-4)-2-acetamido-2-deoxy-beta-D-glucopyranose-(1-4)-[alpha-L-fucopyranose-(1-6)]2-acetamido-2-deoxy-beta-D-glucopyranose



4 Data and refinement statistics

Property	Value	Source
Space group	P 21 21 21	Depositor
Cell constants a, b, c, α , β , γ	68.77Å 69.92Å 187.15Å 90.00° 90.00° 90.00°	Depositor
Resolution (Å)	38.88 – 3.11 38.88 – 3.12	Depositor EDS
% Data completeness (in resolution range)	75.5 (38.88-3.11) 75.9 (38.88-3.12)	Depositor EDS
R_{merge}	0.11	Depositor
R_{sym}	(Not available)	Depositor
$\langle I/\sigma(I) \rangle$ ¹	1.80 (at 3.12Å)	Xtrriage
Refinement program	BUSTER 2.11.2	Depositor
R, R_{free}	0.183 , 0.239 0.203 , 0.251	Depositor DCC
R_{free} test set	614 reflections (4.82%)	wwPDB-VP
Wilson B-factor (Å ²)	68.4	Xtrriage
Anisotropy	0.689	Xtrriage
Bulk solvent k_{sol} (e/Å ³), B_{sol} (Å ²)	0.31 , 69.4	EDS
L-test for twinning ²	$\langle L \rangle = 0.49$, $\langle L^2 \rangle = 0.32$	Xtrriage
Estimated twinning fraction	0.032 for k,h,-l	Xtrriage
F_o, F_c correlation	0.94	EDS
Total number of atoms	3967	wwPDB-VP
Average B, all atoms (Å ²)	101.0	wwPDB-VP

Xtrriage's analysis on translational NCS is as follows: *The largest off-origin peak in the Patterson function is 4.24% of the height of the origin peak. No significant pseudotranslation is detected.*

¹Intensities estimated from amplitudes.

²Theoretical values of $\langle |L| \rangle$, $\langle L^2 \rangle$ for acentric reflections are 0.5, 0.333 respectively for untwinned datasets, and 0.375, 0.2 for perfectly twinned datasets.

5 Model quality i

5.1 Standard geometry i

Bond lengths and bond angles in the following residue types are not validated in this section: 2OB, NAG, MAN, PCW, PGE, CL, 0SF, FUC

The Z score for a bond length (or angle) is the number of standard deviations the observed value is removed from the expected value. A bond length (or angle) with $|Z| > 5$ is considered an outlier worth inspection. RMSZ is the root-mean-square of all Z scores of the bond lengths (or angles).

Mol	Chain	Bond lengths		Bond angles	
		RMSZ	# Z >5	RMSZ	# Z >5
1	A	0.88	2/3790 (0.1%)	1.45	31/5138 (0.6%)

All (2) bond length outliers are listed below:

Mol	Chain	Res	Type	Atoms	Z	Observed(Å)	Ideal(Å)
1	A	312	VAL	CA-C	5.87	1.60	1.52
1	A	418	ILE	CA-CB	5.64	1.56	1.54

All (31) bond angle outliers are listed below:

Mol	Chain	Res	Type	Atoms	Z	Observed(°)	Ideal(°)
1	A	312	VAL	N-CA-C	9.47	121.42	110.62
1	A	187	ILE	N-CA-C	-6.62	104.19	110.42
1	A	463	PHE	CA-CB-CG	-6.62	107.18	113.80
1	A	354	ASP	CA-CB-CG	6.49	119.09	112.60
1	A	220	ASP	CA-CB-CG	6.31	118.91	112.60
1	A	265	PHE	CA-CB-CG	6.10	119.90	113.80
1	A	123	LEU	N-CA-C	5.89	119.00	109.40
1	A	365	GLU	N-CA-C	5.75	117.52	108.96
1	A	441	PHE	CA-CB-CG	5.72	119.52	113.80
1	A	427	VAL	CA-C-N	5.68	128.54	120.53
1	A	427	VAL	C-N-CA	5.68	128.54	120.53
1	A	344	VAL	N-CA-C	5.67	117.29	109.46
1	A	32	GLN	CA-C-N	5.60	128.06	120.38
1	A	32	GLN	C-N-CA	5.60	128.06	120.38
1	A	81	SER	N-CA-C	5.58	115.39	108.19
1	A	386	ASP	CA-CB-CG	5.57	118.17	112.60
1	A	448	ILE	N-CA-CB	5.31	118.05	111.41
1	A	417	GLY	CA-C-N	5.20	125.42	120.43
1	A	417	GLY	C-N-CA	5.20	125.42	120.43

Continued on next page...

Continued from previous page...

Mol	Chain	Res	Type	Atoms	Z	Observed(°)	Ideal(°)
1	A	178	VAL	CA-C-N	5.17	127.52	120.54
1	A	178	VAL	C-N-CA	5.17	127.52	120.54
1	A	257	ASP	CA-CB-CG	5.17	117.77	112.60
1	A	57	TYR	N-CA-C	5.14	117.49	110.55
1	A	430	THR	CA-C-N	5.14	127.48	120.54
1	A	430	THR	C-N-CA	5.14	127.48	120.54
1	A	232	HIS	CA-C-N	5.08	127.05	120.44
1	A	232	HIS	C-N-CA	5.08	127.05	120.44
1	A	26	GLU	CA-C-N	5.07	127.39	120.54
1	A	26	GLU	C-N-CA	5.07	127.39	120.54
1	A	253	THR	N-CA-C	-5.07	107.64	113.88
1	A	467	LEU	N-CA-C	5.03	118.19	111.75

There are no chirality outliers.

There are no planarity outliers.

5.2 Too-close contacts [i](#)

In the following table, the Non-H and H(model) columns list the number of non-hydrogen atoms and hydrogen atoms in the chain respectively. The H(added) column lists the number of hydrogen atoms added and optimized by MolProbity. The Clashes column lists the number of clashes within the asymmetric unit, whereas Symm-Clashes lists symmetry-related clashes.

Mol	Chain	Non-H	H(model)	H(added)	Clashes	Symm-Clashes
1	A	3712	0	3724	66	0
2	B	49	0	43	0	0
3	A	82	0	131	6	0
4	A	54	0	84	4	0
5	A	10	0	14	0	0
6	A	1	0	0	0	0
7	A	38	21	21	2	0
All	All	3946	21	4017	67	0

The all-atom clashscore is defined as the number of clashes found per 1000 atoms (including hydrogen atoms). The all-atom clashscore for this structure is 8.

All (67) close contacts within the same asymmetric unit are listed below, sorted by their clash magnitude.

Atom-1	Atom-2	Interatomic distance (Å)	Clash overlap (Å)
1:A:198:VAL:HG11	3:A:605:2OB:H191	1.68	0.74

Continued on next page...

Continued from previous page...

Atom-1	Atom-2	Interatomic distance (Å)	Clash overlap (Å)
4:A:607:PCW:O31	4:A:607:PCW:H12	1.90	0.70
1:A:305:GLN:HB2	1:A:308:PHE:HD1	1.57	0.68
1:A:222:VAL:HG23	1:A:231:HIS:HE1	1.61	0.66
1:A:38:ALA:HB1	1:A:182:GLN:HB3	1.76	0.66
1:A:417:GLY:HA2	3:A:606:2OB:H361	1.79	0.65
1:A:136:VAL:H	1:A:199:GLN:HE22	1.44	0.64
1:A:15:ILE:HD12	1:A:19:ALA:HB3	1.79	0.63
1:A:371:VAL:HG13	1:A:422:MET:HE3	1.81	0.63
1:A:14:ARG:HB3	1:A:262:TYR:HB2	1.82	0.62
1:A:412:MET:O	1:A:416:VAL:HG23	2.01	0.61
1:A:62:ILE:HD12	1:A:62:ILE:H	1.65	0.59
1:A:15:ILE:CD1	1:A:19:ALA:HB3	2.31	0.59
1:A:271:HIS:CE1	1:A:328:MET:HE1	2.38	0.59
1:A:428:VAL:HG11	4:A:607:PCW:H32	1.84	0.59
1:A:233:LYS:HA	1:A:247:LEU:HD21	1.85	0.58
1:A:32:GLN:HG3	1:A:67:LEU:HD22	1.85	0.58
1:A:263:PHE:HB2	1:A:457:LEU:HB2	1.84	0.58
1:A:425:LEU:HD13	4:A:607:PCW:H121	1.86	0.57
1:A:352:ARG:HB3	1:A:353:PRO:HD2	1.86	0.57
1:A:305:GLN:HB2	1:A:308:PHE:CD1	2.40	0.54
1:A:93:PHE:CZ	1:A:179:LEU:HD21	2.43	0.54
1:A:425:LEU:CD1	4:A:607:PCW:H31	2.38	0.54
1:A:150:LEU:HD21	1:A:175:LEU:HD23	1.92	0.52
1:A:11:ILE:HG21	7:A:610:0SF:H9	1.92	0.52
1:A:17:LYS:HE3	1:A:75:GLU:HA	1.91	0.52
1:A:136:VAL:H	1:A:199:GLN:NE2	2.06	0.51
1:A:43:ILE:HG21	1:A:171:ILE:HG23	1.93	0.50
1:A:67:LEU:HD12	1:A:91:VAL:HG13	1.94	0.49
1:A:293:LYS:HE3	1:A:303:THR:HG21	1.95	0.49
1:A:136:VAL:HB	1:A:217:LEU:HD11	1.96	0.48
1:A:54:GLN:HB2	1:A:103:THR:HG23	1.96	0.48
1:A:287:LEU:HB2	1:A:321:VAL:HG12	1.96	0.48
1:A:193:ILE:HG21	1:A:475:LEU:HD21	1.95	0.48
1:A:251:SER:HB3	1:A:254:LEU:HD13	1.97	0.47
1:A:20:LEU:HB3	1:A:74:VAL:HG11	1.96	0.47
1:A:301:PHE:HB3	1:A:308:PHE:CZ	2.50	0.47
1:A:125:ILE:HG12	1:A:187:ILE:HD13	1.97	0.47
1:A:19:ALA:HB2	1:A:260:MET:HB3	1.97	0.46
1:A:198:VAL:HG21	3:A:605:2OB:H112	1.97	0.46
1:A:186:GLU:O	1:A:190:ILE:HG13	2.16	0.46
1:A:214:ASP:HB2	1:A:237:ILE:HD11	1.98	0.44

Continued on next page...

Continued from previous page...

Atom-1	Atom-2	Interatomic distance (Å)	Clash overlap (Å)
1:A:430:THR:HA	1:A:433:MET:HG3	1.99	0.44
1:A:413:ILE:O	1:A:417:GLY:HA3	2.17	0.44
1:A:202:ALA:HB1	7:A:610:OSF:C4	2.47	0.44
1:A:142:ASP:HB3	1:A:144:TYR:OH	2.18	0.44
1:A:274:ALA:HB1	1:A:329:PRO:HD2	2.00	0.44
1:A:175:LEU:HG	1:A:179:LEU:HD12	1.99	0.43
1:A:365:GLU:HB3	1:A:391:PRO:HA	2.00	0.43
1:A:418:ILE:HB	1:A:419:PRO:HD3	1.99	0.43
1:A:375:TYR:HB3	1:A:446:PRO:HG2	2.00	0.43
1:A:84:VAL:HG21	3:A:605:2OB:H262	2.00	0.43
1:A:16:THR:HG21	1:A:257:ASP:HA	2.01	0.43
1:A:447:GLU:HB3	1:A:449:ILE:HD11	2.02	0.42
1:A:232:HIS:CD2	1:A:232:HIS:N	2.88	0.42
1:A:336:LYS:HD2	1:A:370:THR:HG21	2.02	0.41
1:A:15:ILE:HD13	3:A:605:2OB:H6	2.03	0.41
1:A:197:PHE:CE1	1:A:201:ARG:HD3	2.55	0.41
1:A:15:ILE:HG12	3:A:605:2OB:H71	2.01	0.41
1:A:275:LYS:HA	1:A:328:MET:HG3	2.02	0.41
1:A:136:VAL:N	1:A:199:GLN:HE22	2.14	0.41
1:A:354:ASP:HB3	1:A:357:HIS:CD2	2.55	0.41
1:A:15:ILE:HG23	1:A:228:LEU:HG	2.03	0.41
1:A:189:VAL:CG2	1:A:190:ILE:N	2.84	0.41
1:A:125:ILE:HG21	1:A:187:ILE:HG21	2.02	0.41
1:A:378:LYS:HD3	1:A:439:SER:HA	2.03	0.41
1:A:15:ILE:HD11	1:A:20:LEU:HD13	2.03	0.40

There are no symmetry-related clashes.

5.3 Torsion angles [i](#)

5.3.1 Protein backbone [i](#)

In the following table, the Percentiles column shows the percent Ramachandran outliers of the chain as a percentile score with respect to all X-ray entries followed by that with respect to entries of similar resolution.

The Analysed column shows the number of residues for which the backbone conformation was analysed, and the total number of residues.

Mol	Chain	Analysed	Favoured	Allowed	Outliers	Percentiles
1	A	470/476 (99%)	426 (91%)	39 (8%)	5 (1%)	11 36

All (5) Ramachandran outliers are listed below:

Mol	Chain	Res	Type
1	A	109	ILE
1	A	289	GLY
1	A	206	LEU
1	A	310	GLU
1	A	465	GLU

5.3.2 Protein sidechains [i](#)

In the following table, the Percentiles column shows the percent sidechain outliers of the chain as a percentile score with respect to all X-ray entries followed by that with respect to entries of similar resolution.

The Analysed column shows the number of residues for which the sidechain conformation was analysed, and the total number of residues.

Mol	Chain	Analysed	Rotameric	Outliers	Percentiles
1	A	422/424 (100%)	349 (83%)	73 (17%)	2 9

All (73) residues with a non-rotameric sidechain are listed below:

Mol	Chain	Res	Type
1	A	5	THR
1	A	15	ILE
1	A	20	LEU
1	A	21	LEU
1	A	22	VAL
1	A	32	GLN
1	A	39	SER
1	A	50	MET
1	A	62	ILE
1	A	63	GLN
1	A	67	LEU
1	A	73	GLN
1	A	75	GLU
1	A	80	LYS
1	A	82	ILE
1	A	121	ILE
1	A	123	LEU
1	A	127	THR
1	A	133	SER
1	A	150	LEU

Continued on next page...

Continued from previous page...

Mol	Chain	Res	Type
1	A	151	LEU
1	A	152	LEU
1	A	154	LEU
1	A	155	GLN
1	A	179	LEU
1	A	180	LYS
1	A	189	VAL
1	A	193	ILE
1	A	213	VAL
1	A	224	THR
1	A	228	LEU
1	A	232	HIS
1	A	237	ILE
1	A	243	GLU
1	A	244	ASP
1	A	249	THR
1	A	261	LEU
1	A	271	HIS
1	A	279	GLN
1	A	296	LEU
1	A	297	GLU
1	A	306	GLU
1	A	310	GLU
1	A	311	VAL
1	A	317	SER
1	A	320	GLN
1	A	331	ILE
1	A	334	GLN
1	A	339	VAL
1	A	342	SER
1	A	344	VAL
1	A	349	LEU
1	A	368	VAL
1	A	374	SER
1	A	376	SER
1	A	380	LEU
1	A	385	LEU
1	A	386	ASP
1	A	388	GLN
1	A	393	THR
1	A	407	SER
1	A	409	LEU

Continued on next page...

Continued from previous page...

Mol	Chain	Res	Type
1	A	416	VAL
1	A	425	LEU
1	A	428	VAL
1	A	433	MET
1	A	435	SER
1	A	443	ILE
1	A	449	ILE
1	A	465	GLU
1	A	469	VAL
1	A	471	PHE
1	A	472	LEU

Sometimes sidechains can be flipped to improve hydrogen bonding and reduce clashes. All (14) such sidechains are listed below:

Mol	Chain	Res	Type
1	A	24	ASN
1	A	87	GLN
1	A	126	ASN
1	A	153	HIS
1	A	165	GLN
1	A	169	ASN
1	A	199	GLN
1	A	231	HIS
1	A	279	GLN
1	A	302	ASN
1	A	356	GLN
1	A	357	HIS
1	A	388	GLN
1	A	466	HIS

5.3.3 RNA [i](#)

There are no RNA molecules in this entry.

5.4 Non-standard residues in protein, DNA, RNA chains [i](#)

There are no non-standard protein/DNA/RNA residues in this entry.

5.5 Carbohydrates i

4 monosaccharides are modelled in this entry.

In the following table, the Counts columns list the number of bonds (or angles) for which Mogul statistics could be retrieved, the number of bonds (or angles) that are observed in the model and the number of bonds (or angles) that are defined in the Chemical Component Dictionary. The Link column lists molecule types, if any, to which the group is linked. The Z score for a bond length (or angle) is the number of standard deviations the observed value is removed from the expected value. A bond length (or angle) with $|Z| > 2$ is considered an outlier worth inspection. RMSZ is the root-mean-square of all Z scores of the bond lengths (or angles).

Mol	Type	Chain	Res	Link	Bond lengths			Bond angles		
					Counts	RMSZ	# Z > 2	Counts	RMSZ	# Z > 2
2	NAG	B	1	1,2	14,14,15	0.30	0	17,19,21	0.94	1 (5%)
2	NAG	B	2	2	14,14,15	0.30	0	17,19,21	1.11	3 (17%)
2	MAN	B	3	2	11,11,12	0.44	0	15,15,17	1.20	1 (6%)
2	FUC	B	4	2	10,10,11	0.41	0	14,14,16	0.89	1 (7%)

In the following table, the Chirals column lists the number of chiral outliers, the number of chiral centers analysed, the number of these observed in the model and the number defined in the Chemical Component Dictionary. Similar counts are reported in the Torsion and Rings columns. '-' means no outliers of that kind were identified.

Mol	Type	Chain	Res	Link	Chirals	Torsions	Rings
2	NAG	B	1	1,2	-	0/6/23/26	0/1/1/1
2	NAG	B	2	2	-	0/6/23/26	0/1/1/1
2	MAN	B	3	2	-	0/2/19/22	1/1/1/1
2	FUC	B	4	2	-	-	0/1/1/1

There are no bond length outliers.

All (6) bond angle outliers are listed below:

Mol	Chain	Res	Type	Atoms	Z	Observed(°)	Ideal(°)
2	B	3	MAN	C1-O5-C5	4.28	117.93	112.19
2	B	1	NAG	O5-C1-C2	-2.91	106.78	111.29
2	B	2	NAG	C1-C2-N2	2.89	114.99	110.43
2	B	4	FUC	C1-O5-C5	2.87	119.73	112.97
2	B	2	NAG	C1-O5-C5	2.46	115.49	112.19
2	B	2	NAG	O5-C1-C2	-2.25	107.81	111.29

There are no chirality outliers.

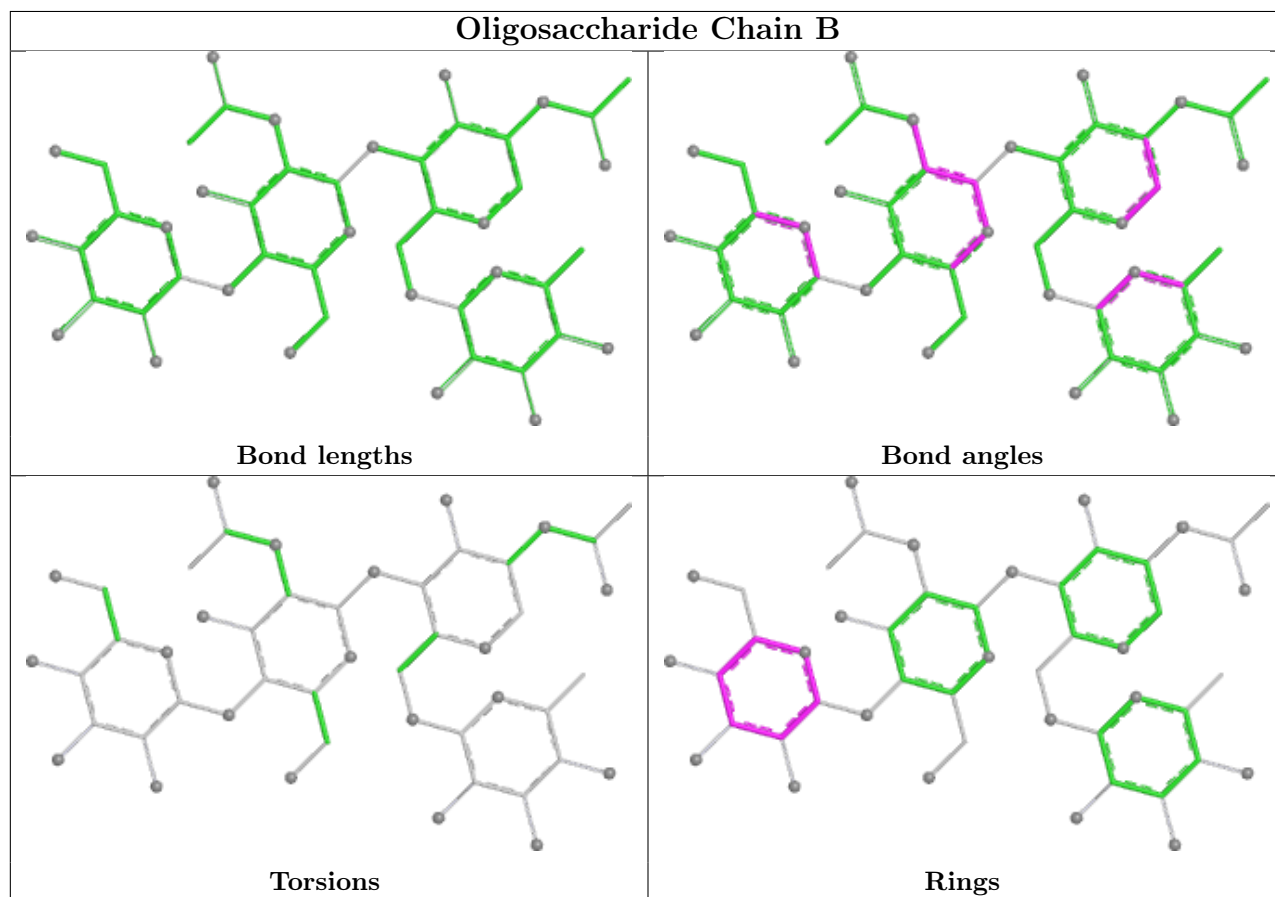
There are no torsion outliers.

All (1) ring outliers are listed below:

Mol	Chain	Res	Type	Atoms
2	B	3	MAN	C1-C2-C3-C4-C5-O5

No monomer is involved in short contacts.

The following is a two-dimensional graphical depiction of Mogul quality analysis of bond lengths, bond angles, torsion angles, and ring geometry for oligosaccharide.



5.6 Ligand geometry [i](#)

Of 6 ligands modelled in this entry, 1 is monoatomic - leaving 5 for Mogul analysis.

In the following table, the Counts columns list the number of bonds (or angles) for which Mogul statistics could be retrieved, the number of bonds (or angles) that are observed in the model and the number of bonds (or angles) that are defined in the Chemical Component Dictionary. The Link column lists molecule types, if any, to which the group is linked. The Z score for a bond length (or angle) is the number of standard deviations the observed value is removed from the expected value. A bond length (or angle) with $|Z| > 2$ is considered an outlier worth inspection. RMSZ is the root-mean-square of all Z scores of the bond lengths (or angles).

Mol	Type	Chain	Res	Link	Bond lengths			Bond angles		
					Counts	RMSZ	# Z > 2	Counts	RMSZ	# Z > 2
4	PCW	A	607	-	53,53,53	1.28	4 (7%)	59,61,61	1.05	6 (10%)
3	2OB	A	605	-	38,38,50	0.49	0	56,56,68	0.82	2 (3%)
7	0SF	A	610	-	39,40,40	1.42	4 (10%)	50,58,58	1.17	4 (8%)
5	PGE	A	608	-	9,9,9	0.76	0	8,8,8	0.61	0
3	2OB	A	606	-	50,50,50	0.81	1 (2%)	68,68,68	1.44	10 (14%)

In the following table, the Chirals column lists the number of chiral outliers, the number of chiral centers analysed, the number of these observed in the model and the number defined in the Chemical Component Dictionary. Similar counts are reported in the Torsion and Rings columns. '-' means no outliers of that kind were identified.

Mol	Type	Chain	Res	Link	Chirals	Torsions	Rings
4	PCW	A	607	-	-	23/57/57/57	-
3	2OB	A	605	-	-	1/19/77/89	0/4/4/4
7	0SF	A	610	-	-	9/34/35/35	0/3/3/3
5	PGE	A	608	-	-	5/7/7/7	-
3	2OB	A	606	-	-	17/31/89/89	0/4/4/4

All (9) bond length outliers are listed below:

Mol	Chain	Res	Type	Atoms	Z	Observed(Å)	Ideal(Å)
7	A	610	0SF	C24-C23	6.18	1.58	1.51
4	A	607	PCW	P-O1P	5.40	1.80	1.55
4	A	607	PCW	O3-C11	4.41	1.46	1.33
4	A	607	PCW	O2-C31	4.37	1.46	1.34
3	A	606	2OB	O1-C48	4.37	1.46	1.34
7	A	610	0SF	C12-N1	3.07	1.39	1.34
7	A	610	0SF	O3-C23	-2.84	1.38	1.43
4	A	607	PCW	P-O2P	2.76	1.60	1.50
7	A	610	0SF	C12-N2	2.26	1.38	1.34

All (22) bond angle outliers are listed below:

Mol	Chain	Res	Type	Atoms	Z	Observed(°)	Ideal(°)
7	A	610	0SF	C2-C3-C8	-4.75	120.83	123.43
3	A	606	2OB	C21-C20-C22	-4.33	103.64	110.34
3	A	606	2OB	C15-C14-C13	4.09	108.66	103.84
4	A	607	PCW	O3-C11-C12	3.72	123.16	111.83
3	A	606	2OB	O1-C48-C47	3.34	118.70	111.48
3	A	606	2OB	C4-C5-C10	2.91	120.15	116.42

Continued on next page...

Continued from previous page...

Mol	Chain	Res	Type	Atoms	Z	Observed(°)	Ideal(°)
3	A	606	2OB	C11-C9-C8	2.75	115.62	111.78
4	A	607	PCW	O2-C2-C1	2.65	117.86	108.34
4	A	607	PCW	O2-C31-C32	2.63	117.17	111.48
4	A	607	PCW	O3-C11-O11	-2.62	117.06	123.63
3	A	605	2OB	O1-C3-C4	-2.57	102.75	108.04
3	A	606	2OB	C4-C5-C6	-2.56	117.10	120.57
4	A	607	PCW	C2-O2-C31	2.55	123.91	117.80
7	A	610	0SF	F5-C24-C23	2.48	114.54	112.10
4	A	607	PCW	C3-O3-C11	2.47	126.16	117.12
7	A	610	0SF	C23-C22-N3	-2.42	110.10	113.01
3	A	606	2OB	C13-C17-C20	2.28	123.01	119.50
3	A	606	2OB	C21-C20-C17	2.23	116.23	112.88
7	A	610	0SF	O2-C18-C19	-2.12	111.44	119.16
3	A	606	2OB	C1-C2-C3	2.09	113.73	110.33
3	A	606	2OB	C16-C17-C20	2.04	115.27	112.18
3	A	605	2OB	C3-O1-C48	2.03	122.64	117.80

There are no chirality outliers.

All (55) torsion outliers are listed below:

Mol	Chain	Res	Type	Atoms
4	A	607	PCW	O4P-C4-C5-N
4	A	607	PCW	C12-C11-O3-C3
4	A	607	PCW	O11-C11-O3-C3
7	A	610	0SF	C17-C18-O2-C20
7	A	610	0SF	F3-C20-O2-C18
7	A	610	0SF	O2-C20-C21-F1
7	A	610	0SF	O2-C20-C21-F2
7	A	610	0SF	F3-C20-C21-F1
7	A	610	0SF	F3-C20-C21-F2
7	A	610	0SF	F4-C20-C21-F1
7	A	610	0SF	F4-C20-C21-F2
3	A	606	2OB	C13-C17-C20-C21
3	A	606	2OB	C21-C20-C22-C23
3	A	606	2OB	C17-C20-C22-C23
5	A	608	PGE	O2-C3-C4-O3
5	A	608	PGE	O3-C5-C6-O4
3	A	606	2OB	C22-C23-C24-C25
4	A	607	PCW	C40-C41-C42-C43
4	A	607	PCW	C1-C2-O2-C31
3	A	606	2OB	C23-C24-C25-C27
3	A	606	2OB	C41-C42-C43-C44

Continued on next page...

Continued from previous page...

Mol	Chain	Res	Type	Atoms
4	A	607	PCW	C34-C35-C36-C37
3	A	606	2OB	C34-C35-C36-C37
4	A	607	PCW	C12-C13-C14-C15
3	A	606	2OB	C23-C24-C25-C26
4	A	607	PCW	C24-C25-C26-C27
4	A	607	PCW	C35-C36-C37-C38
5	A	608	PGE	O1-C1-C2-O2
4	A	607	PCW	C33-C34-C35-C36
3	A	606	2OB	C40-C41-C42-C43
4	A	607	PCW	O3P-C1-C2-C3
4	A	607	PCW	C16-C17-C18-C19
4	A	607	PCW	C22-C23-C24-C25
4	A	607	PCW	C42-C43-C44-C45
4	A	607	PCW	C25-C26-C27-C28
3	A	606	2OB	C31-C32-C33-C34
4	A	607	PCW	C45-C46-C47-C48
3	A	606	2OB	C13-C17-C20-C22
4	A	607	PCW	C31-C32-C33-C34
3	A	606	2OB	C32-C33-C34-C35
3	A	606	2OB	C44-C45-C46-C47
3	A	606	2OB	C42-C43-C44-C45
4	A	607	PCW	C32-C33-C34-C35
4	A	607	PCW	O3P-C1-C2-O2
7	A	610	0SF	C19-C18-O2-C20
5	A	608	PGE	C6-C5-O3-C4
3	A	606	2OB	C33-C34-C35-C36
5	A	608	PGE	C4-C3-O2-C2
4	A	607	PCW	C19-C20-C21-C22
4	A	607	PCW	C13-C14-C15-C16
3	A	606	2OB	C16-C17-C20-C22
3	A	606	2OB	C37-C38-C39-C40
4	A	607	PCW	C36-C37-C38-C39
3	A	605	2OB	C45-C46-C47-C48
4	A	607	PCW	C21-C22-C23-C24

There are no ring outliers.

4 monomers are involved in 12 short contacts:

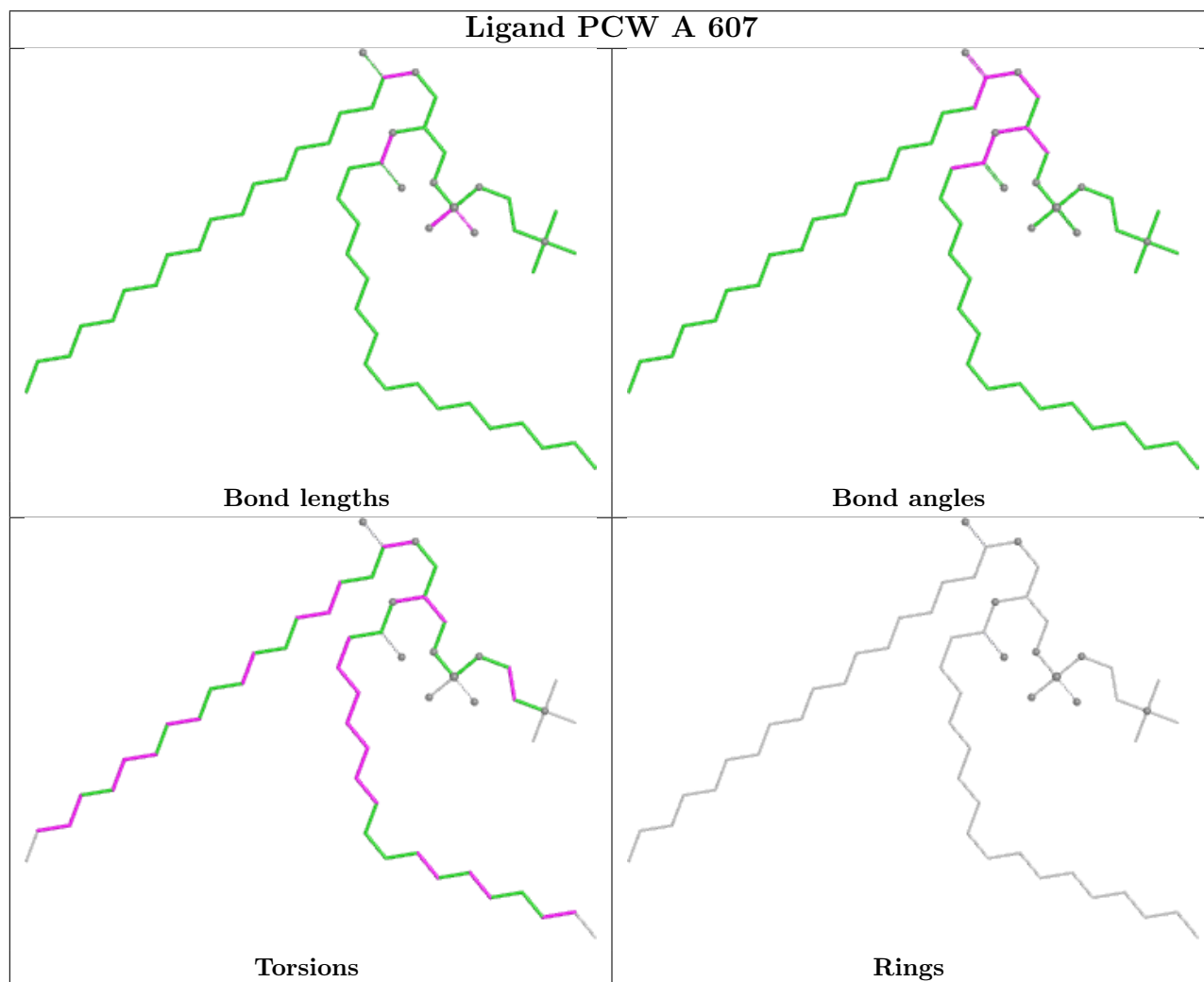
Mol	Chain	Res	Type	Clashes	Symm-Clashes
4	A	607	PCW	4	0
3	A	605	2OB	5	0
7	A	610	0SF	2	0

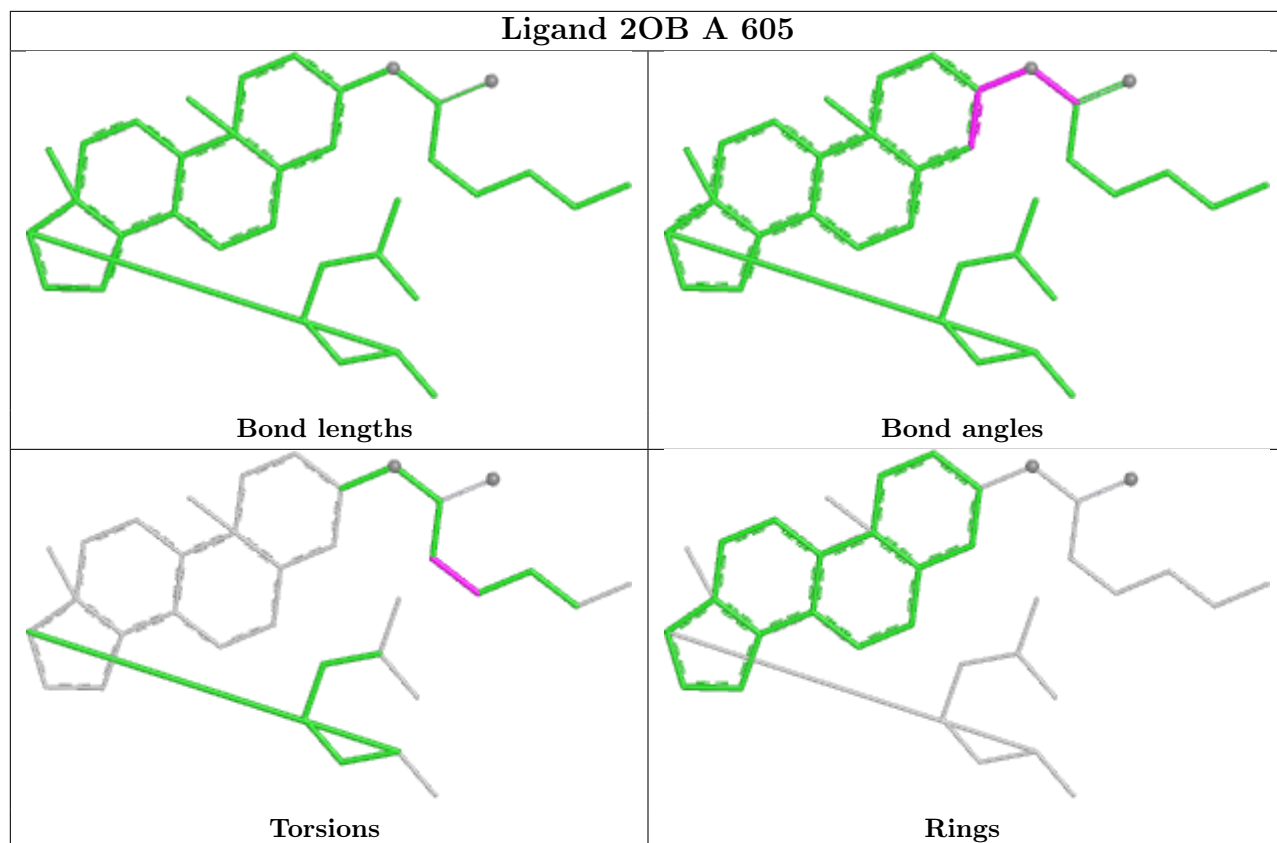
Continued on next page...

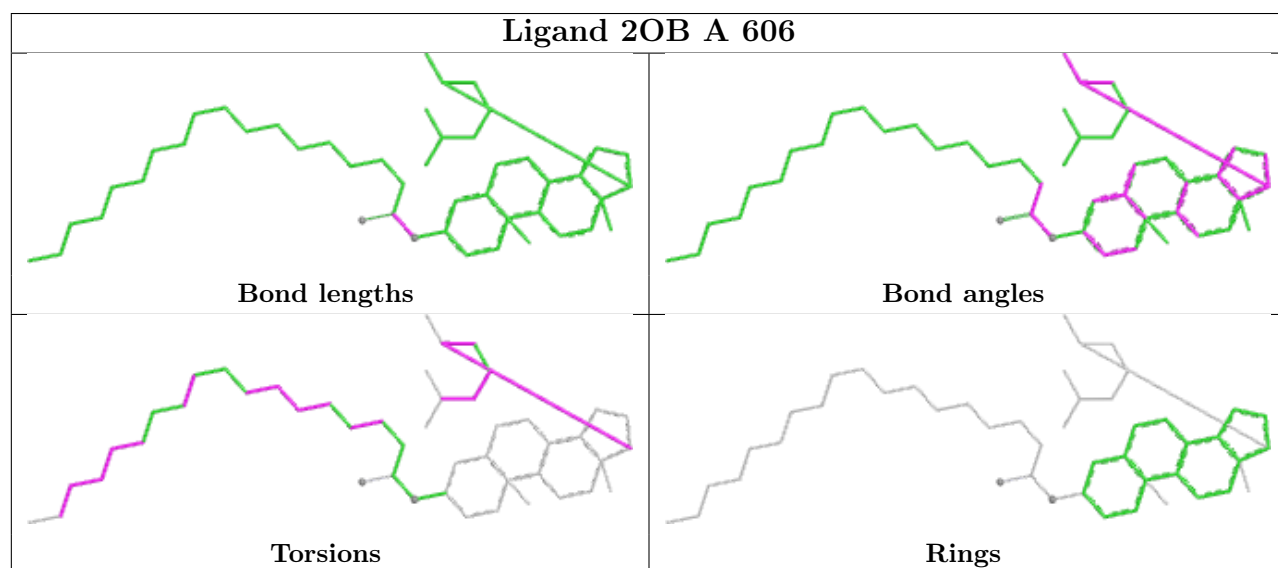
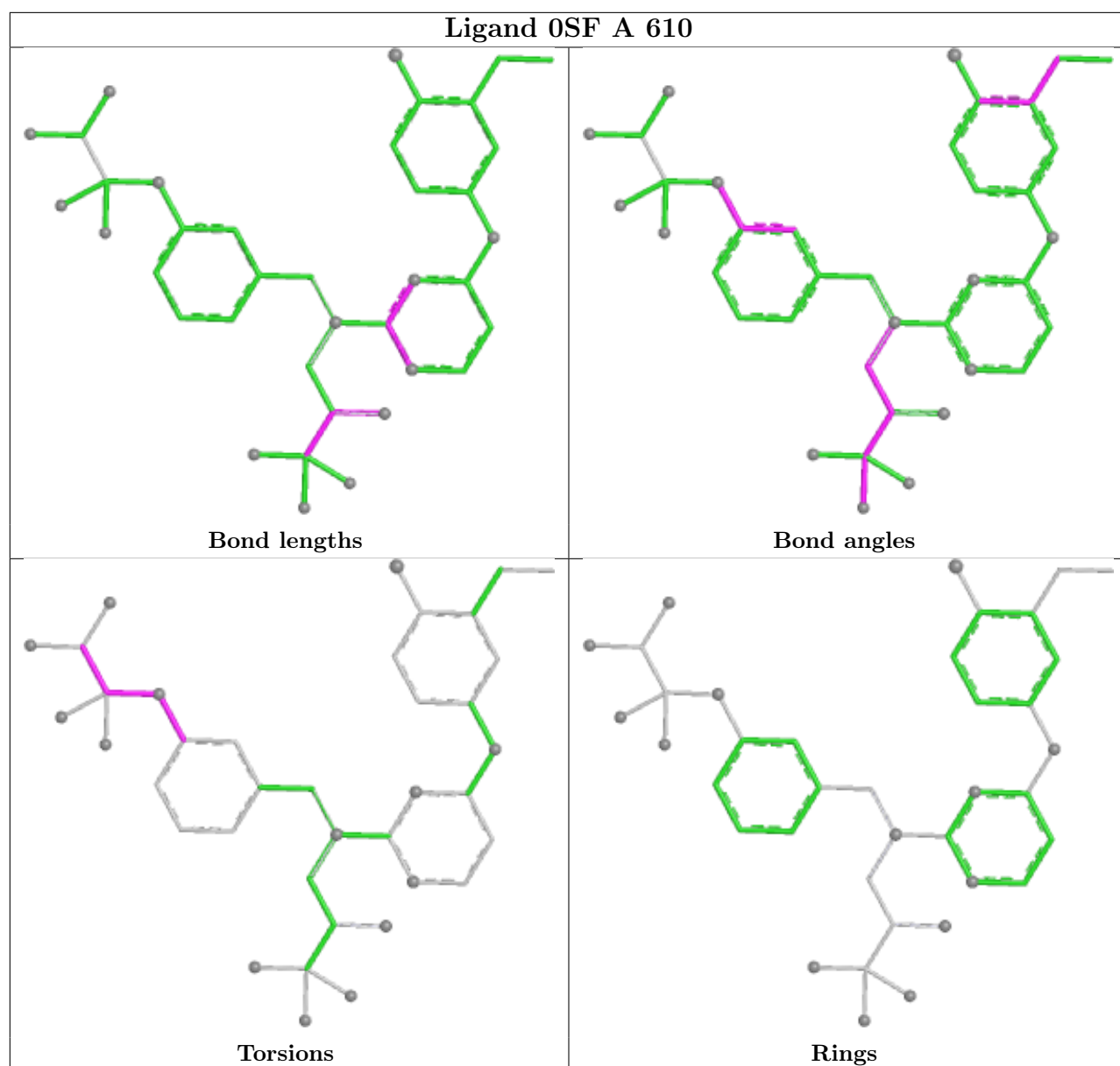
Continued from previous page...

Mol	Chain	Res	Type	Clashes	Symm-Clashes
3	A	606	2OB	1	0

The following is a two-dimensional graphical depiction of Mogul quality analysis of bond lengths, bond angles, torsion angles, and ring geometry for all instances of the Ligand of Interest. In addition, ligands with molecular weight > 250 and outliers as shown on the validation Tables will also be included. For torsion angles, if less than 5% of the Mogul distribution of torsion angles is within 10 degrees of the torsion angle in question, then that torsion angle is considered an outlier. Any bond that is central to one or more torsion angles identified as an outlier by Mogul will be highlighted in the graph. For rings, the root-mean-square deviation (RMSD) between the ring in question and similar rings identified by Mogul is calculated over all ring torsion angles. If the average RMSD is greater than 60 degrees and the minimal RMSD between the ring in question and any Mogul-identified rings is also greater than 60 degrees, then that ring is considered an outlier. The outliers are highlighted in purple. The color gray indicates Mogul did not find sufficient equivalents in the CSD to analyse the geometry.







5.7 Other polymers [i](#)

There are no such residues in this entry.

5.8 Polymer linkage issues [i](#)

There are no chain breaks in this entry.

6 Fit of model and data [i](#)

6.1 Protein, DNA and RNA chains [i](#)

In the following table, the column labelled ‘#RSRZ > 2’ contains the number (and percentage) of RSRZ outliers, followed by percent RSRZ outliers for the chain as percentile scores relative to all X-ray entries and entries of similar resolution. The OWAB column contains the minimum, median, 95th percentile and maximum values of the occupancy-weighted average B-factor per residue. The column labelled ‘Q < 0.9’ lists the number of (and percentage) of residues with an average occupancy less than 0.9.

Mol	Chain	Analysed	<RSRZ>	#RSRZ>2	OWAB(Å ²)	Q<0.9
1	A	472/476 (99%)	-0.26	3 (0%) 85 70	66, 95, 161, 190	0

All (3) RSRZ outliers are listed below:

Mol	Chain	Res	Type	RSRZ
1	A	307	ILE	4.0
1	A	303	THR	3.1
1	A	5	THR	2.2

6.2 Non-standard residues in protein, DNA, RNA chains [i](#)

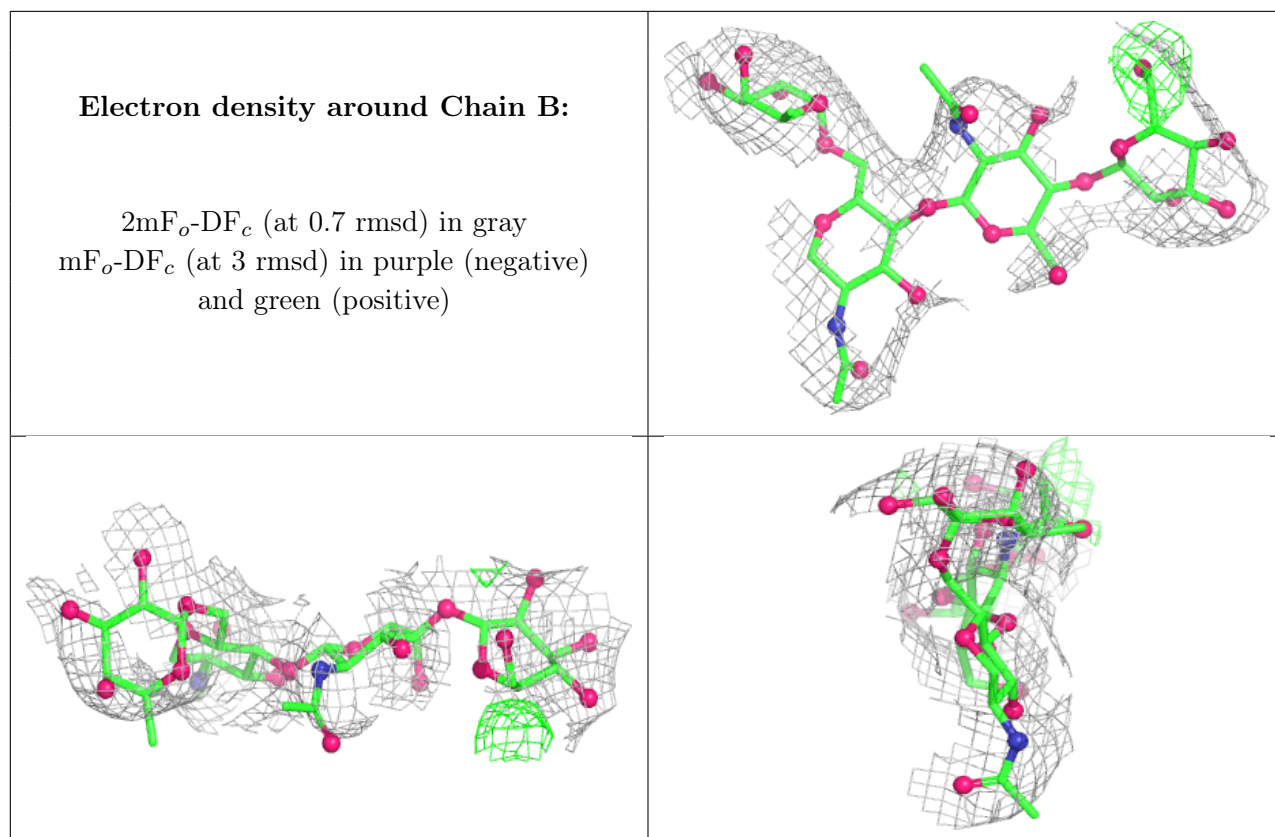
There are no non-standard protein/DNA/RNA residues in this entry.

6.3 Carbohydrates [i](#)

In the following table, the Atoms column lists the number of modelled atoms in the group and the number defined in the chemical component dictionary. The B-factors column lists the minimum, median, 95th percentile and maximum values of B factors of atoms in the group. The column labelled ‘Q < 0.9’ lists the number of atoms with occupancy less than 0.9.

Mol	Type	Chain	Res	Atoms	RSCC	RSR	B-factors(Å ²)	Q<0.9
2	MAN	B	3	11/12	0.17	0.12	179,181,181,182	0
2	NAG	B	1	14/15	0.82	0.07	157,159,164,166	0
2	NAG	B	2	14/15	0.83	0.08	166,170,176,178	0
2	FUC	B	4	10/11	0.91	0.08	159,160,161,161	0

The following is a graphical depiction of the model fit to experimental electron density for oligosaccharide. Each fit is shown from different orientation to approximate a three-dimensional view.



6.4 Ligands [i](#)

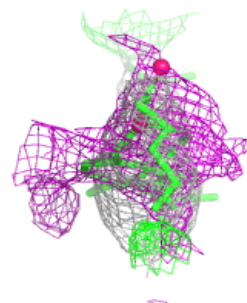
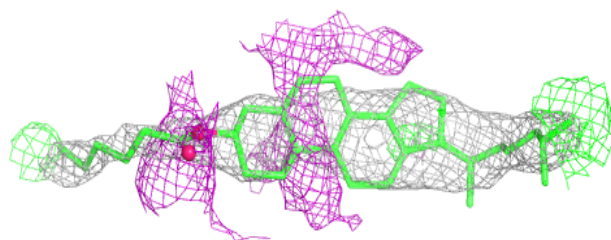
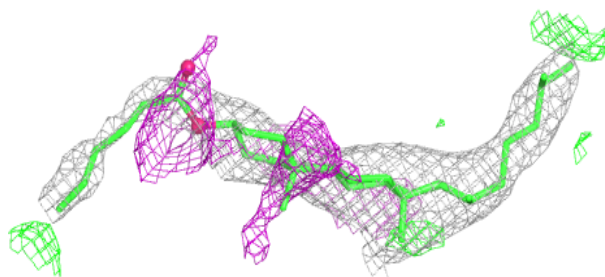
In the following table, the Atoms column lists the number of modelled atoms in the group and the number defined in the chemical component dictionary. The B-factors column lists the minimum, median, 95th percentile and maximum values of B factors of atoms in the group. The column labelled 'Q< 0.9' lists the number of atoms with occupancy less than 0.9.

Mol	Type	Chain	Res	Atoms	RSCC	RSR	B-factors(Å ²)	Q<0.9
3	2OB	A	605	35/47	0.86	0.26	66,93,101,104	0
4	PCW	A	607	54/54	0.86	0.21	89,102,153,154	0
6	CL	A	609	1/1	0.86	0.16	108,108,108,108	0
7	OSF	A	610	38/38	0.91	0.17	92,103,139,144	21
5	PGE	A	608	10/10	0.94	0.16	75,82,87,87	0
3	2OB	A	606	47/47	0.98	0.10	55,69,106,111	0

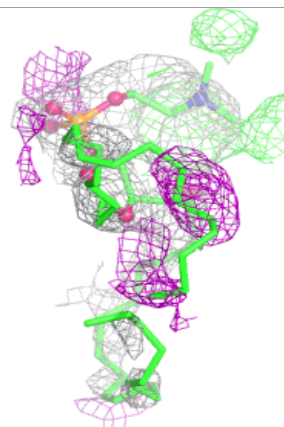
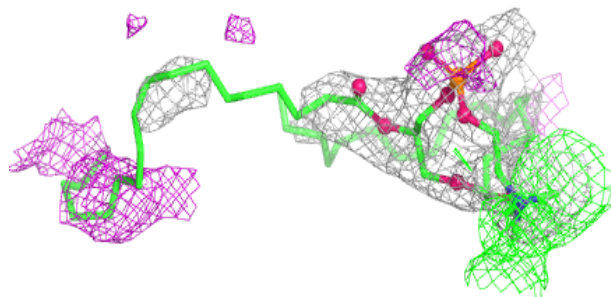
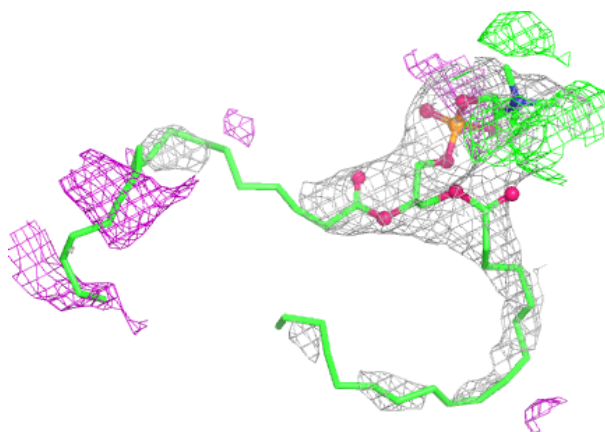
The following is a graphical depiction of the model fit to experimental electron density of all instances of the Ligand of Interest. In addition, ligands with molecular weight > 250 and outliers as shown on the geometry validation Tables will also be included. Each fit is shown from different orientation to approximate a three-dimensional view.

Electron density around 2OB A 605:

$2mF_o-DF_c$ (at 0.7 rmsd) in gray
 mF_o-DF_c (at 3 rmsd) in purple (negative)
and green (positive)

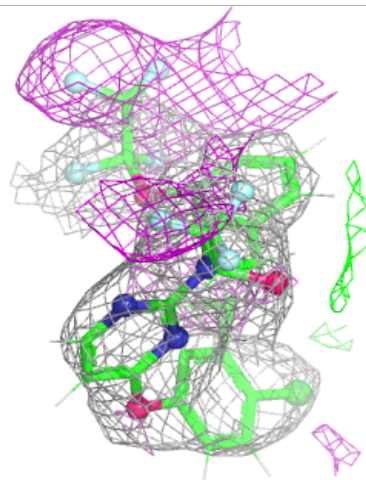
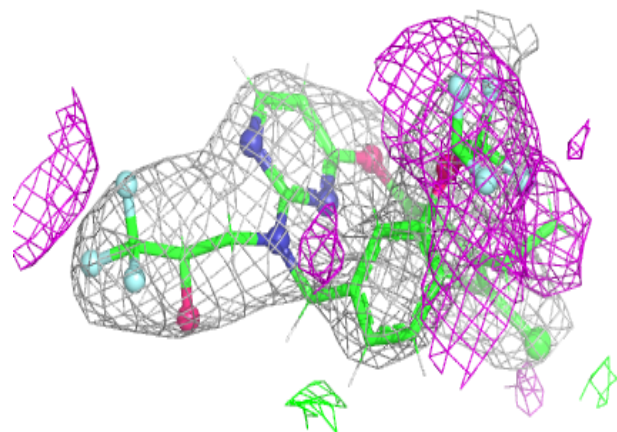
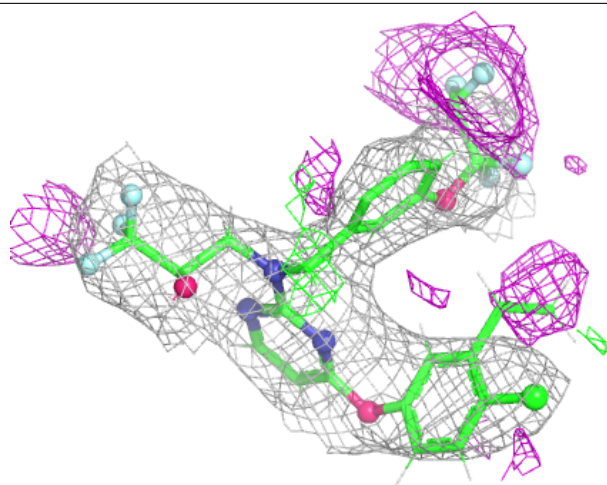
**Electron density around PCW A 607:**

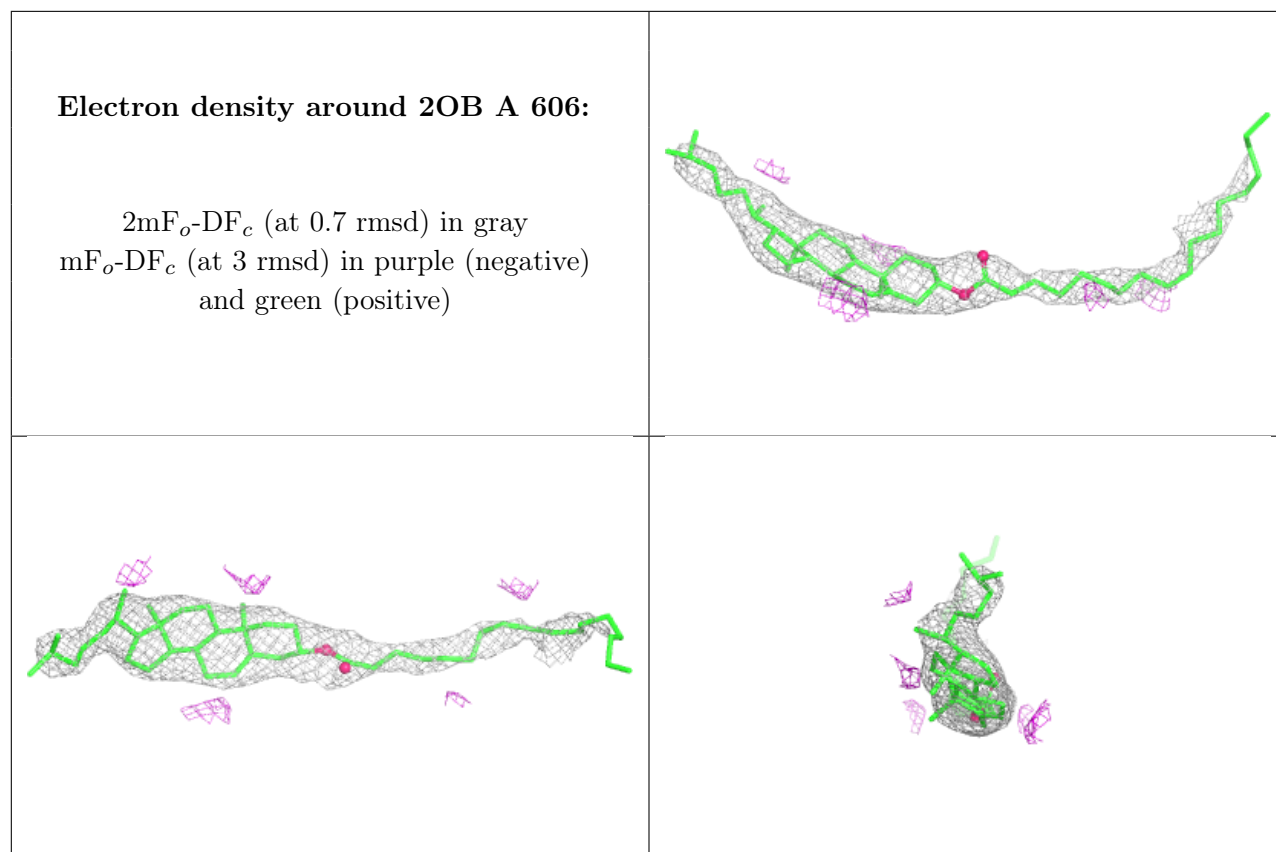
$2mF_o-DF_c$ (at 0.7 rmsd) in gray
 mF_o-DF_c (at 3 rmsd) in purple (negative)
and green (positive)



Electron density around OSF A 610:

$2mF_o-DF_c$ (at 0.7 rmsd) in gray
 mF_o-DF_c (at 3 rmsd) in purple (negative)
and green (positive)





6.5 Other polymers [i](#)

There are no such residues in this entry.