



Full wwPDB X-ray Structure Validation Report ⓘ

Mar 5, 2026 – 07:22 PM UTC

PDB ID : 2FAP / pdb_00002fap
Title : THE STRUCTURE OF THE IMMUNOPHILIN-IMMUNOSUPPRESSANT FKBP12-(C16)-ETHOXY RAPAMYCIN COMPLEX INTERACTING WITH HUMA
Authors : Liang, J.; Choi, J.; Clardy, J.
Deposited on : 1998-09-22
Resolution : 2.20 Å(reported)

This is a Full wwPDB X-ray Structure Validation Report for a publicly released PDB entry.

We welcome your comments at validation@mail.wwpdb.org

A user guide is available at

<https://www.wwpdb.org/validation/2017/XrayValidationReportHelp>

with specific help available everywhere you see the ⓘ symbol.

The types of validation reports are described at

<http://www.wwpdb.org/validation/2017/FAQs#types>.

The following versions of software and data (see [references ⓘ](#)) were used in the production of this report:

MolProbity : 4-5-2 with Phenix2.0
Mogul : 2022.3.0, CSD as543be (2022)
Xtrriage (Phenix) : 2.0
EDS : 3.0
Buster-report : wwPDB partial adaption of 1.1.7 (2018)
Percentile statistics : 20250101.v01 (using entries in the PDB archive January 1st 2025)
CCP4 : 9.0.010 (Gargrove)
Density-Fitness : 1.0.12
Ideal geometry (proteins) : Engh & Huber (2001)
Ideal geometry (DNA, RNA) : Parkinson et al. (1996)
Validation Pipeline (wwPDB-VP) : 2.49

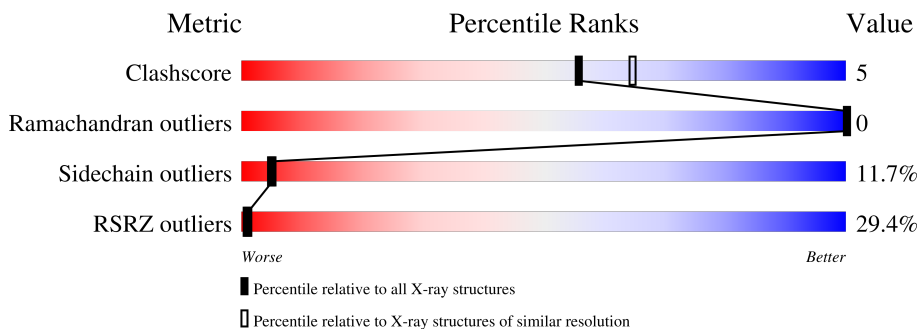
1 Overall quality at a glance

The following experimental techniques were used to determine the structure:

X-RAY DIFFRACTION

The reported resolution of this entry is 2.20 Å.

Percentile scores (ranging between 0-100) for global validation metrics of the entry are shown in the following graphic. The table shows the number of entries on which the scores are based.



Metric	Whole archive (#Entries)	Similar resolution (#Entries, resolution range(Å))
Clashscore	190562	6851 (2.20-2.20)
Ramachandran outliers	187476	6768 (2.20-2.20)
Sidechain outliers	187428	6769 (2.20-2.20)
RSRZ outliers	180081	6166 (2.20-2.20)

The table below summarises the geometric issues observed across the polymeric chains and their fit to the electron density. The red, orange, yellow and green segments of the lower bar indicate the fraction of residues that contain outliers for ≥ 3 , 2, 1 and 0 types of geometric quality criteria respectively. A grey segment represents the fraction of residues that are not modelled. The numeric value for each fraction is indicated below the corresponding segment, with a dot representing fractions $\leq 5\%$. The upper red bar (where present) indicates the fraction of residues that have poor fit to the electron density. The numeric value is given above the bar.

Mol	Chain	Length	Quality of chain
1	A	107	
2	B	94	

2 Entry composition [i](#)

There are 4 unique types of molecules in this entry. The entry contains 1829 atoms, of which 0 are hydrogens and 0 are deuteriums.

In the tables below, the ZeroOcc column contains the number of atoms modelled with zero occupancy, the AltConf column contains the number of residues with at least one atom in alternate conformation and the Trace column contains the number of residues modelled with at most 2 atoms.

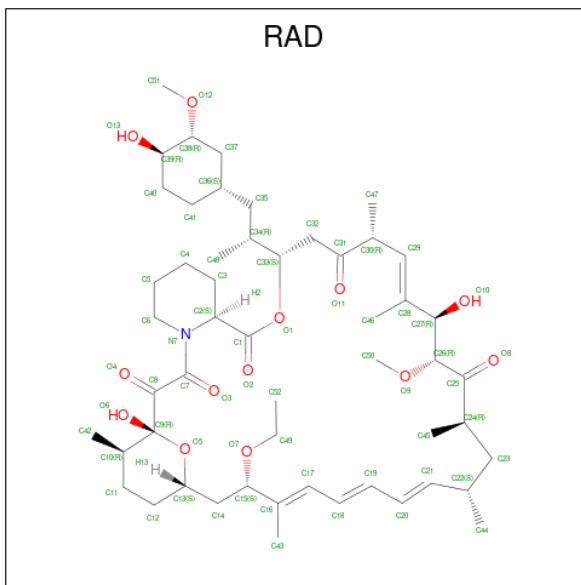
- Molecule 1 is a protein called FK506-BINDING PROTEIN.

Mol	Chain	Residues	Atoms					ZeroOcc	AltConf	Trace
			Total	C	N	O	S			
1	A	107	837	530	148	155	4	0	1	0

- Molecule 2 is a protein called FRAP.

Mol	Chain	Residues	Atoms					ZeroOcc	AltConf	Trace
			Total	C	N	O	S			
2	B	94	800	510	139	144	7	0	1	0

- Molecule 3 is C49-METHYL RAPAMYCIN (CCD ID: RAD) (formula: C₅₂H₈₁NO₁₃).



Mol	Chain	Residues	Atoms				ZeroOcc	AltConf
			Total	C	N	O		
3	A	1	66	52	1	13	0	0

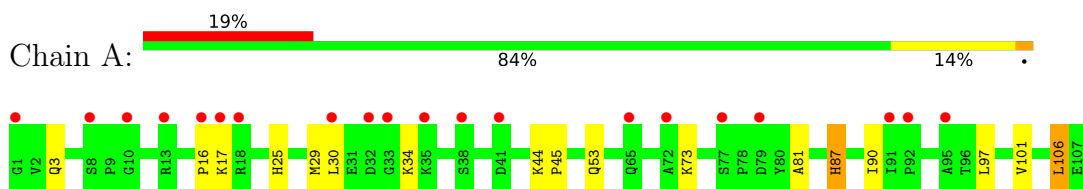
- Molecule 4 is water.

Mol	Chain	Residues	Atoms	ZeroOcc	AltConf
4	A	67	Total O 67 67	0	0
4	B	59	Total O 59 59	0	0

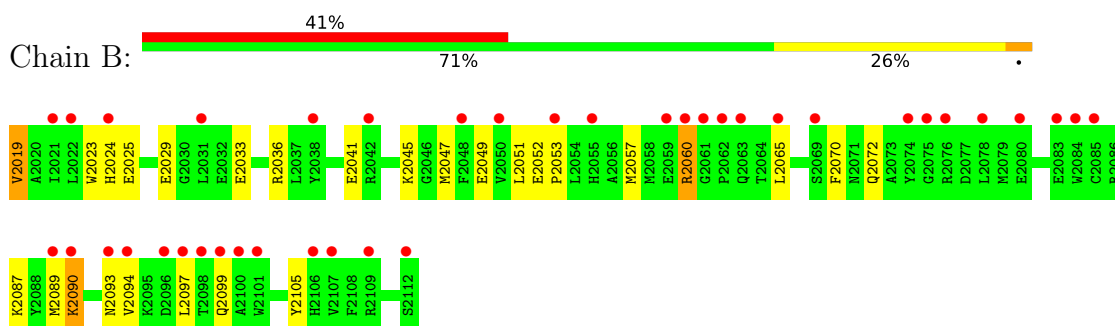
3 Residue-property plots [i](#)

These plots are drawn for all protein, RNA, DNA and oligosaccharide chains in the entry. The first graphic for a chain summarises the proportions of the various outlier classes displayed in the second graphic. The second graphic shows the sequence view annotated by issues in geometry and electron density. Residues are color-coded according to the number of geometric quality criteria for which they contain at least one outlier: green = 0, yellow = 1, orange = 2 and red = 3 or more. A red dot above a residue indicates a poor fit to the electron density ($RSRZ > 2$). Stretches of 2 or more consecutive residues without any outlier are shown as a green connector. Residues present in the sample, but not in the model, are shown in grey.

- Molecule 1: FK506-BINDING PROTEIN



- Molecule 2: FRAP



4 Data and refinement statistics

Property	Value	Source
Space group	P 21 21 21	Depositor
Cell constants a, b, c, α , β , γ	44.63Å 52.14Å 102.53Å 90.00° 90.00° 90.00°	Depositor
Resolution (Å)	8.00 – 2.20 8.00 – 2.20	Depositor EDS
% Data completeness (in resolution range)	97.4 (8.00-2.20) 94.6 (8.00-2.20)	Depositor EDS
R_{merge}	0.09	Depositor
R_{sym}	(Not available)	Depositor
$\langle I/\sigma(I) \rangle$ ¹	2.92 (at 2.12Å)	Xtrriage
Refinement program	X-PLOR	Depositor
R, R_{free}	0.196 , 0.266 (Not available) , (Not available)	Depositor DCC
R_{free} test set	No test flags present.	wwPDB-VP
Wilson B-factor (Å ²)	18.3	Xtrriage
Anisotropy	0.323	Xtrriage
Bulk solvent k_{sol} (e/Å ³), B_{sol} (Å ²)	0.38 , 50.4	EDS
L-test for twinning ²	$\langle L \rangle = 0.45$, $\langle L^2 \rangle = 0.27$	Xtrriage
Estimated twinning fraction	No twinning to report.	Xtrriage
F_o, F_c correlation	0.77	EDS
Total number of atoms	1829	wwPDB-VP
Average B, all atoms (Å ²)	16.0	wwPDB-VP

Xtrriage's analysis on translational NCS is as follows: *The largest off-origin peak in the Patterson function is 8.02% of the height of the origin peak. No significant pseudotranslation is detected.*

¹Intensities estimated from amplitudes.

²Theoretical values of $\langle |L| \rangle$, $\langle L^2 \rangle$ for acentric reflections are 0.5, 0.333 respectively for untwinned datasets, and 0.375, 0.2 for perfectly twinned datasets.

5 Model quality

5.1 Standard geometry

Bond lengths and bond angles in the following residue types are not validated in this section: RAD

The Z score for a bond length (or angle) is the number of standard deviations the observed value is removed from the expected value. A bond length (or angle) with $|Z| > 5$ is considered an outlier worth inspection. RMSZ is the root-mean-square of all Z scores of the bond lengths (or angles).

Mol	Chain	Bond lengths		Bond angles	
		RMSZ	# Z >5	RMSZ	# Z >5
1	A	0.49	0/862	0.77	0/1162
2	B	0.40	0/827	0.72	0/1111
All	All	0.45	0/1689	0.75	0/2273

There are no bond length outliers.

There are no bond angle outliers.

There are no chirality outliers.

There are no planarity outliers.

5.2 Too-close contacts

In the following table, the Non-H and H(model) columns list the number of non-hydrogen atoms and hydrogen atoms in the chain respectively. The H(added) column lists the number of hydrogen atoms added and optimized by MolProbity. The Clashes column lists the number of clashes within the asymmetric unit, whereas Symm-Clashes lists symmetry-related clashes.

Mol	Chain	Non-H	H(model)	H(added)	Clashes	Symm-Clashes
1	A	837	0	834	6	1
2	B	800	0	762	10	5
3	A	66	0	81	1	0
4	A	67	0	0	2	0
4	B	59	0	0	1	6
All	All	1829	0	1677	16	9

The all-atom clashscore is defined as the number of clashes found per 1000 atoms (including hydrogen atoms). The all-atom clashscore for this structure is 5.

All (16) close contacts within the same asymmetric unit are listed below, sorted by their clash magnitude.

Atom-1	Atom-2	Interatomic distance (Å)	Clash overlap (Å)
1:A:97:LEU:HG	4:A:419:HOH:O	1.64	0.97
2:B:2057:MET:O	2:B:2060:ARG:HG3	2.02	0.60
2:B:2089:MET:HB3	4:B:321:HOH:O	2.04	0.58
2:B:2047:MET:HE1	2:B:2097:LEU:HD11	1.88	0.56
2:B:2023:TRP:HE1	2:B:2057:MET:HE3	1.70	0.55
2:B:2052:GLU:HB3	2:B:2053:PRO:HD3	1.89	0.53
3:A:108:RAD:H2O	2:B:2105:TYR:CD1	2.44	0.52
1:A:81:ALA:CB	4:A:419:HOH:O	2.58	0.51
1:A:30:LEU:HD12	1:A:34:LYS:HE3	1.94	0.49
1:A:87[B]:HIS:HD2	1:A:90:ILE:HD12	1.76	0.49
2:B:2025:GLU:O	2:B:2029:GLU:HG2	2.14	0.47
1:A:16:PRO:HA	1:A:106:LEU:HD21	1.99	0.44
2:B:2097:LEU:HD12	2:B:2097:LEU:HA	1.88	0.43
2:B:2087:LYS:O	2:B:2090:LYS:HG3	2.19	0.42
1:A:44:LYS:HA	1:A:45:PRO:HD3	1.84	0.42
2:B:2024:HIS:CD2	2:B:2070:PHE:HD2	2.38	0.41

All (9) symmetry-related close contacts are listed below. The label for Atom-2 includes the symmetry operator and encoded unit-cell translations to be applied.

Atom-1	Atom-2	Interatomic distance (Å)	Clash overlap (Å)
4:B:321:HOH:O	4:B:343:HOH:O[3_455]	1.40	0.80
2:B:2045:LYS:CG	4:B:405:HOH:O[3_455]	1.79	0.41
4:B:398:HOH:O	4:B:421:HOH:O[3_455]	1.80	0.40
2:B:2045:LYS:CD	4:B:405:HOH:O[3_455]	1.94	0.26
4:B:308:HOH:O	4:B:332:HOH:O[3_445]	2.01	0.19
2:B:2045:LYS:CG	2:B:2072:GLN:O[3_455]	2.11	0.09
4:B:325:HOH:O	4:B:385:HOH:O[3_445]	2.12	0.08
2:B:2045:LYS:CB	2:B:2072:GLN:O[3_455]	2.13	0.07
1:A:73:LYS:NZ	2:B:2019:VAL:O[2_465]	2.14	0.06

5.3 Torsion angles [i](#)

5.3.1 Protein backbone [i](#)

In the following table, the Percentiles column shows the percent Ramachandran outliers of the chain as a percentile score with respect to all X-ray entries followed by that with respect to entries of similar resolution.

The Analysed column shows the number of residues for which the backbone conformation was analysed, and the total number of residues.

Mol	Chain	Analysed	Favoured	Allowed	Outliers	Percentiles	
1	A	106/107 (99%)	103 (97%)	3 (3%)	0	100	100
2	B	93/94 (99%)	92 (99%)	1 (1%)	0	100	100
All	All	199/201 (99%)	195 (98%)	4 (2%)	0	100	100

There are no Ramachandran outliers to report.

5.3.2 Protein sidechains [i](#)

In the following table, the Percentiles column shows the percent sidechain outliers of the chain as a percentile score with respect to all X-ray entries followed by that with respect to entries of similar resolution.

The Analysed column shows the number of residues for which the sidechain conformation was analysed, and the total number of residues.

Mol	Chain	Analysed	Rotameric	Outliers	Percentiles	
1	A	90/89 (101%)	81 (90%)	9 (10%)	7	7
2	B	83/82 (101%)	71 (86%)	12 (14%)	3	2
All	All	173/171 (101%)	152 (88%)	21 (12%)	5	4

All (21) residues with a non-rotameric sidechain are listed below:

Mol	Chain	Res	Type
1	A	3	GLN
1	A	17	LYS
1	A	25	HIS
1	A	29	MET
1	A	53	GLN
1	A	87[A]	HIS
1	A	87[B]	HIS
1	A	101	VAL
1	A	106	LEU
2	B	2019	VAL
2	B	2033	GLU
2	B	2036	ARG
2	B	2041	GLU
2	B	2049	GLU
2	B	2051	LEU
2	B	2060	ARG
2	B	2065	LEU
2	B	2090	LYS

Continued on next page...

Continued from previous page...

Mol	Chain	Res	Type
2	B	2093	ASN
2	B	2094	VAL
2	B	2099	GLN

Sometimes sidechains can be flipped to improve hydrogen bonding and reduce clashes. All (2) such sidechains are listed below:

Mol	Chain	Res	Type
2	B	2024	HIS
2	B	2106	HIS

5.3.3 RNA [i](#)

There are no RNA molecules in this entry.

5.4 Non-standard residues in protein, DNA, RNA chains [i](#)

There are no non-standard protein/DNA/RNA residues in this entry.

5.5 Carbohydrates [i](#)

There are no oligosaccharides in this entry.

5.6 Ligand geometry [i](#)

1 ligand is modelled in this entry.

In the following table, the Counts columns list the number of bonds (or angles) for which Mogul statistics could be retrieved, the number of bonds (or angles) that are observed in the model and the number of bonds (or angles) that are defined in the Chemical Component Dictionary. The Link column lists molecule types, if any, to which the group is linked. The Z score for a bond length (or angle) is the number of standard deviations the observed value is removed from the expected value. A bond length (or angle) with $|Z| > 2$ is considered an outlier worth inspection. RMSZ is the root-mean-square of all Z scores of the bond lengths (or angles).

Mol	Type	Chain	Res	Link	Bond lengths			Bond angles		
					Counts	RMSZ	# Z > 2	Counts	RMSZ	# Z > 2
3	RAD	A	108	-	66,69,69	1.77	8 (12%)	77,97,97	1.78	13 (16%)

In the following table, the Chirals column lists the number of chiral outliers, the number of chiral

centers analysed, the number of these observed in the model and the number defined in the Chemical Component Dictionary. Similar counts are reported in the Torsion and Rings columns. '-' means no outliers of that kind were identified.

Mol	Type	Chain	Res	Link	Chirals	Torsions	Rings
3	RAD	A	108	-	-	10/82/125/125	0/3/4/4

All (8) bond length outliers are listed below:

Mol	Chain	Res	Type	Atoms	Z	Observed(Å)	Ideal(Å)
3	A	108	RAD	C7-C8	-10.52	1.40	1.53
3	A	108	RAD	O1-C1	4.44	1.44	1.34
3	A	108	RAD	O1-C33	-3.48	1.40	1.46
3	A	108	RAD	O7-C15	-3.46	1.38	1.43
3	A	108	RAD	O6-C9	2.77	1.44	1.39
3	A	108	RAD	C39-C38	2.60	1.56	1.52
3	A	108	RAD	O5-C13	-2.58	1.39	1.44
3	A	108	RAD	C43-C16	2.01	1.54	1.50

All (13) bond angle outliers are listed below:

Mol	Chain	Res	Type	Atoms	Z	Observed(°)	Ideal(°)
3	A	108	RAD	C49-O7-C15	5.64	120.54	113.56
3	A	108	RAD	O1-C1-C2	5.62	122.47	110.80
3	A	108	RAD	C3-C2-N7	-5.05	103.80	110.55
3	A	108	RAD	C33-O1-C1	4.49	124.64	117.85
3	A	108	RAD	C8-C7-N7	4.26	124.12	119.25
3	A	108	RAD	O1-C1-O2	-3.56	117.52	123.95
3	A	108	RAD	C14-C15-C16	-3.36	107.84	113.28
3	A	108	RAD	C5-C6-N7	-2.87	106.21	110.65
3	A	108	RAD	O7-C49-C52	-2.79	99.47	109.74
3	A	108	RAD	C46-C28-C27	-2.58	110.34	115.85
3	A	108	RAD	C27-C28-C29	2.03	125.30	119.79
3	A	108	RAD	O2-C1-C2	-2.02	119.99	124.46
3	A	108	RAD	C11-C12-C13	2.01	114.20	110.96

There are no chirality outliers.

All (10) torsion outliers are listed below:

Mol	Chain	Res	Type	Atoms
3	A	108	RAD	C18-C19-C20-C21
3	A	108	RAD	C45-C24-C25-O8
3	A	108	RAD	C14-C15-O7-C49

Continued on next page...

Continued from previous page...

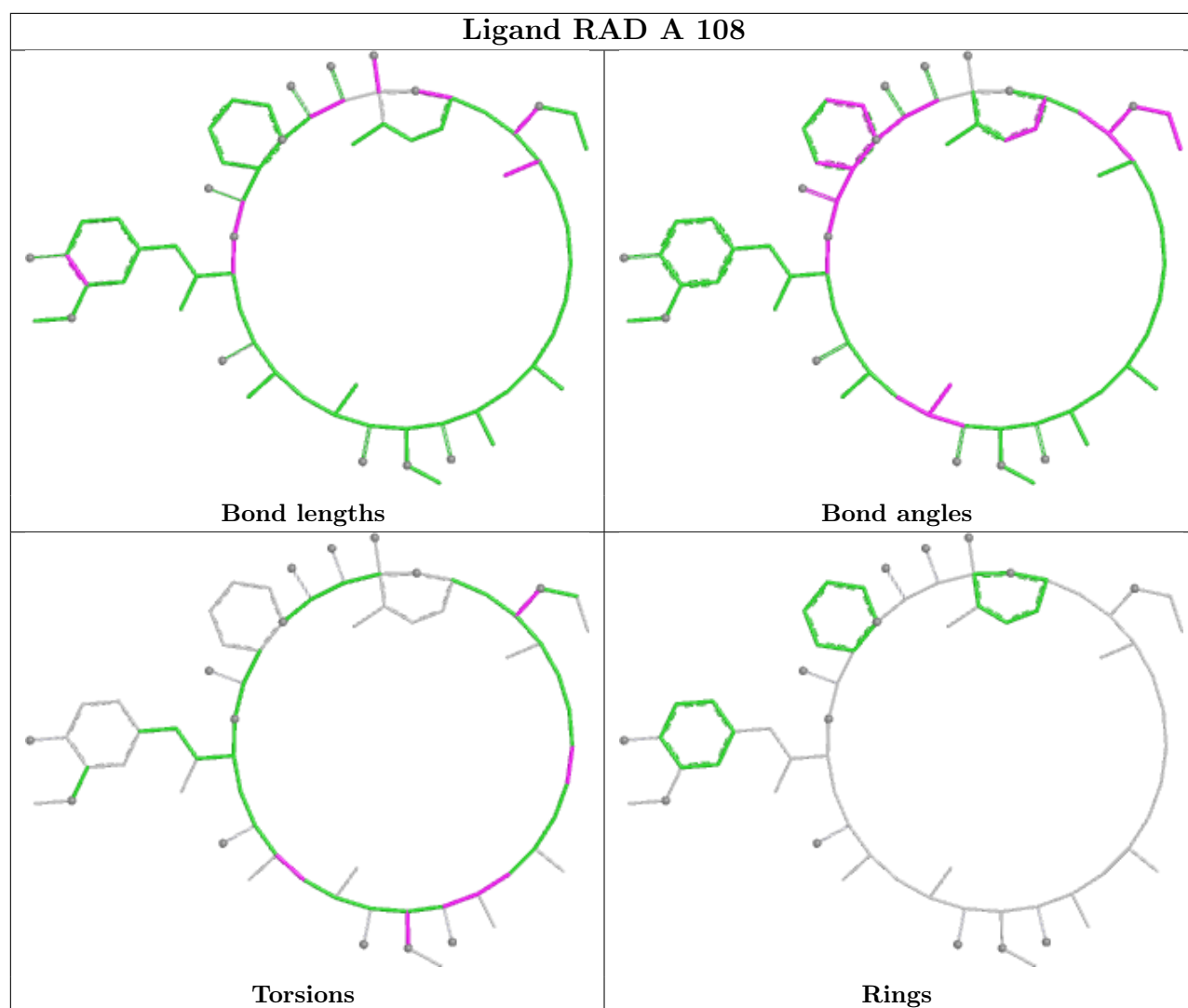
Mol	Chain	Res	Type	Atoms
3	A	108	RAD	C22-C23-C24-C25
3	A	108	RAD	C28-C29-C30-C31
3	A	108	RAD	C25-C26-O9-C50
3	A	108	RAD	C16-C15-O7-C49
3	A	108	RAD	C45-C24-C25-C26
3	A	108	RAD	C23-C24-C25-O8
3	A	108	RAD	C22-C23-C24-C45

There are no ring outliers.

1 monomer is involved in 1 short contact:

Mol	Chain	Res	Type	Clashes	Symm-Clashes
3	A	108	RAD	1	0

The following is a two-dimensional graphical depiction of Mogul quality analysis of bond lengths, bond angles, torsion angles, and ring geometry for all instances of the Ligand of Interest. In addition, ligands with molecular weight > 250 and outliers as shown on the validation Tables will also be included. For torsion angles, if less than 5% of the Mogul distribution of torsion angles is within 10 degrees of the torsion angle in question, then that torsion angle is considered an outlier. Any bond that is central to one or more torsion angles identified as an outlier by Mogul will be highlighted in the graph. For rings, the root-mean-square deviation (RMSD) between the ring in question and similar rings identified by Mogul is calculated over all ring torsion angles. If the average RMSD is greater than 60 degrees and the minimal RMSD between the ring in question and any Mogul-identified rings is also greater than 60 degrees, then that ring is considered an outlier. The outliers are highlighted in purple. The color gray indicates Mogul did not find sufficient equivalents in the CSD to analyse the geometry.



5.7 Other polymers [i](#)

There are no such residues in this entry.

5.8 Polymer linkage issues [i](#)

There are no chain breaks in this entry.

6 Fit of model and data [i](#)

6.1 Protein, DNA and RNA chains [i](#)

In the following table, the column labelled ‘#RSRZ> 2’ contains the number (and percentage) of RSRZ outliers, followed by percent RSRZ outliers for the chain as percentile scores relative to all X-ray entries and entries of similar resolution. The OWAB column contains the minimum, median, 95th percentile and maximum values of the occupancy-weighted average B-factor per residue. The column labelled ‘Q< 0.9’ lists the number of (and percentage) of residues with an average occupancy less than 0.9.

Mol	Chain	Analysed	<RSRZ>	#RSRZ>2	OWAB(Å ²)	Q<0.9
1	A	107/107 (100%)	1.32	20 (18%) 3 2	2, 13, 28, 38	1 (0%)
2	B	94/94 (100%)	1.95	39 (41%) 0 0	6, 15, 28, 34	1 (1%)
All	All	201/201 (100%)	1.61	59 (29%) 1 1	2, 14, 28, 38	2 (0%)

All (59) RSRZ outliers are listed below:

Mol	Chain	Res	Type	RSRZ
2	B	2084	TRP	5.1
2	B	2075	GLY	4.8
2	B	2089	MET	4.0
2	B	2069	SER	4.0
2	B	2090	LYS	4.0
2	B	2093	ASN	3.7
1	A	18	ARG	3.5
2	B	2076	ARG	3.4
2	B	2097	LEU	3.3
2	B	2060	ARG	3.3
2	B	2048	PHE	3.1
2	B	2080	GLU	3.1
1	A	33	GLY	3.1
1	A	95	ALA	3.0
1	A	17	LYS	3.0
1	A	72	ALA	2.9
1	A	13	ARG	2.9
2	B	2101	TRP	2.9
2	B	2061	GLY	2.8
2	B	2055	HIS	2.7
2	B	2085	CYS	2.7
2	B	2094	VAL	2.7
2	B	2083[A]	GLU	2.7
2	B	2109	ARG	2.7

Continued on next page...

Continued from previous page...

Mol	Chain	Res	Type	RSRZ
1	A	16	PRO	2.6
2	B	2107	VAL	2.6
1	A	92	PRO	2.6
2	B	2050	VAL	2.6
2	B	2112	SER	2.5
1	A	41	ASP	2.5
2	B	2038	TYR	2.5
2	B	2059	GLU	2.5
1	A	79	ASP	2.4
2	B	2062	PRO	2.4
1	A	38	SER	2.4
2	B	2074	TYR	2.4
1	A	8	SER	2.4
1	A	30	LEU	2.4
1	A	10	GLY	2.3
2	B	2100	ALA	2.3
2	B	2024	HIS	2.3
2	B	2099	GLN	2.3
1	A	35	LYS	2.3
1	A	32	ASP	2.3
2	B	2031	LEU	2.3
2	B	2053	PRO	2.2
1	A	1	GLY	2.2
2	B	2096	ASP	2.2
2	B	2042	ARG	2.1
2	B	2021	ILE	2.1
2	B	2106	HIS	2.1
2	B	2022	LEU	2.1
1	A	91	ILE	2.1
1	A	65	GLN	2.1
2	B	2063	GLN	2.1
2	B	2098	THR	2.1
2	B	2065	LEU	2.1
1	A	77	SER	2.0
2	B	2078	LEU	2.0

6.2 Non-standard residues in protein, DNA, RNA chains

There are no non-standard protein/DNA/RNA residues in this entry.

6.3 Carbohydrates

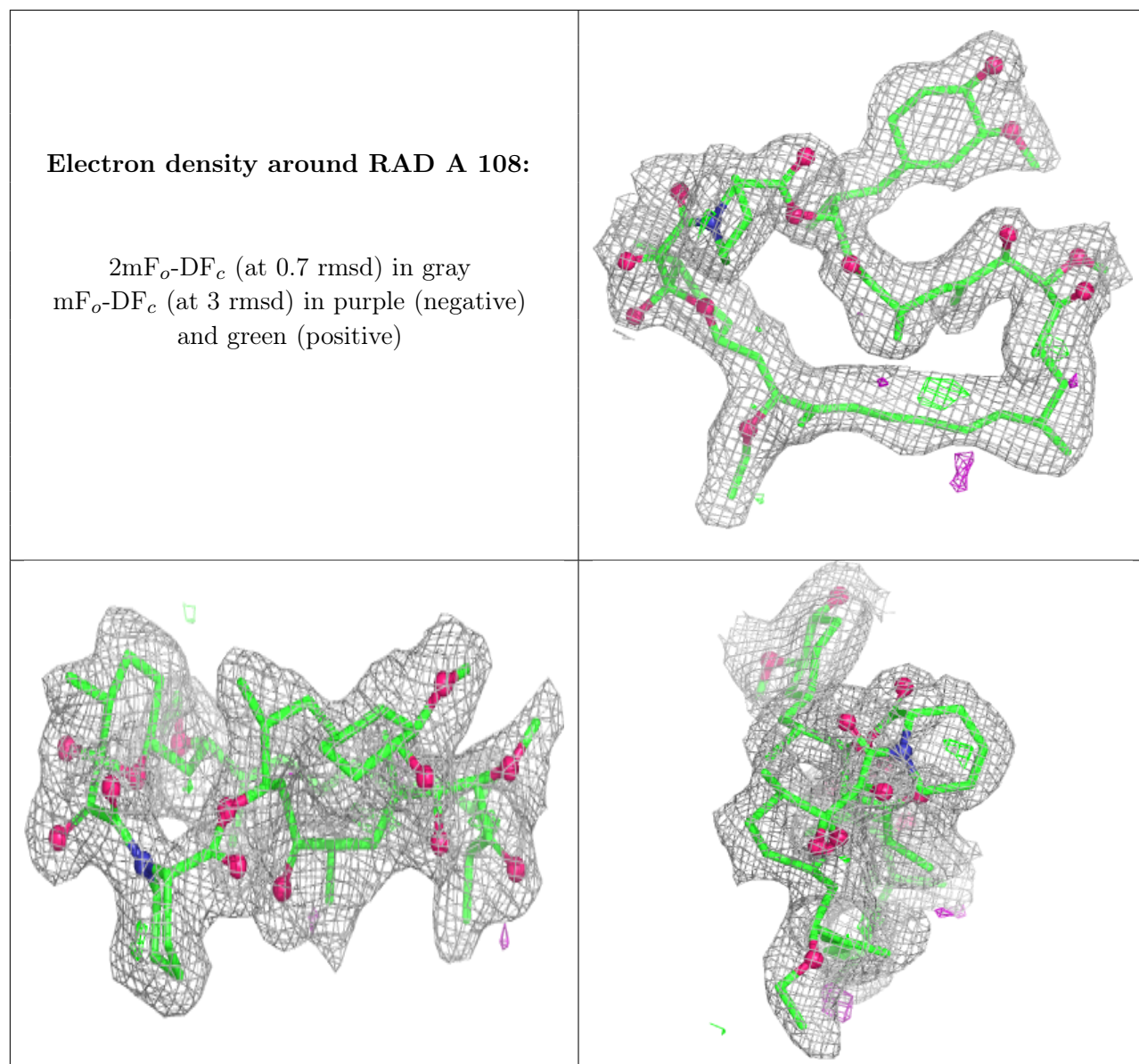
There are no oligosaccharides in this entry.

6.4 Ligands

In the following table, the Atoms column lists the number of modelled atoms in the group and the number defined in the chemical component dictionary. The B-factors column lists the minimum, median, 95th percentile and maximum values of B factors of atoms in the group. The column labelled 'Q< 0.9' lists the number of atoms with occupancy less than 0.9.

Mol	Type	Chain	Res	Atoms	RSCC	RSR	B-factors(\AA^2)	Q<0.9
3	RAD	A	108	66/66	0.78	0.13	2,6,12,14	0

The following is a graphical depiction of the model fit to experimental electron density of all instances of the Ligand of Interest. In addition, ligands with molecular weight > 250 and outliers as shown on the geometry validation Tables will also be included. Each fit is shown from different orientation to approximate a three-dimensional view.



6.5 Other polymers [i](#)

There are no such residues in this entry.