



# Full wwPDB X-ray Structure Validation Report ⓘ

Mar 6, 2026 – 08:02 PM UTC

PDB ID : 6FAC / pdb\_00006fac  
Title : CRYSTAL STRUCTURE OF THE DEAH-BOX HELICASE PRP2 IN COMPLEX WITH ADP  
Authors : Schmitt, A.; Hamann, F.; Neumann, P.; Ficner, R.  
Deposited on : 2017-12-15  
Resolution : 2.05 Å (reported)

This is a Full wwPDB X-ray Structure Validation Report for a publicly released PDB entry.

We welcome your comments at [validation@mail.wwpdb.org](mailto:validation@mail.wwpdb.org)

A user guide is available at

<https://www.wwpdb.org/validation/2017/XrayValidationReportHelp>

with specific help available everywhere you see the ⓘ symbol.

The types of validation reports are described at

<http://www.wwpdb.org/validation/2017/FAQs#types>.

---

The following versions of software and data (see [references ⓘ](#)) were used in the production of this report:

MolProbity : 4-5-2 with Phenix2.0  
Mogul : 2022.3.0, CSD as543be (2022)  
Xtrriage (Phenix) : 2.0  
EDS : 3.0  
Buster-report : wwPDB partial adaption of 1.1.7 (2018)  
Percentile statistics : 20250101.v01 (using entries in the PDB archive January 1st 2025)  
CCP4 : 9.0.010 (Gargrove)  
Density-Fitness : 1.0.12  
Ideal geometry (proteins) : Engh & Huber (2001)  
Ideal geometry (DNA, RNA) : Parkinson et al. (1996)  
Validation Pipeline (wwPDB-VP) : 2.49

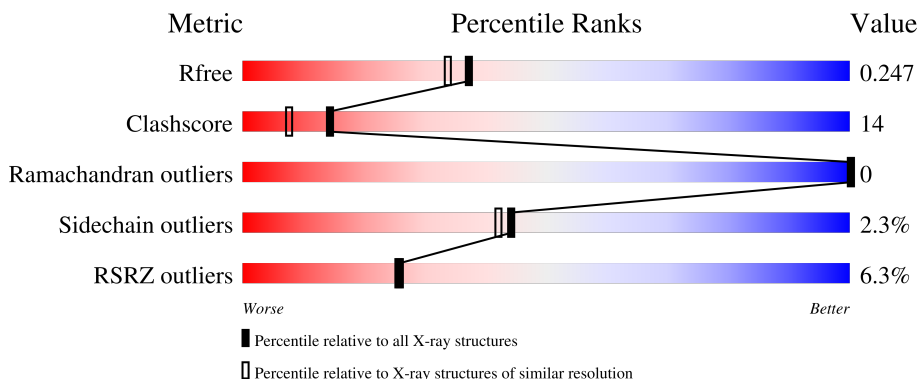
# 1 Overall quality at a glance

The following experimental techniques were used to determine the structure:

*X-RAY DIFFRACTION*

The reported resolution of this entry is 2.05 Å.

Percentile scores (ranging between 0-100) for global validation metrics of the entry are shown in the following graphic. The table shows the number of entries on which the scores are based.



Metric	Whole archive (#Entries)	Similar resolution (#Entries, resolution range(Å))
$R_{free}$	180053	2260 (2.04-2.04)
Clashscore	190562	2333 (2.04-2.04)
Ramachandran outliers	187476	2318 (2.04-2.04)
Sidechain outliers	187428	2318 (2.04-2.04)
RSRZ outliers	180081	2260 (2.04-2.04)

The table below summarises the geometric issues observed across the polymeric chains and their fit to the electron density. The red, orange, yellow and green segments of the lower bar indicate the fraction of residues that contain outliers for  $\geq 3$ , 2, 1 and 0 types of geometric quality criteria respectively. A grey segment represents the fraction of residues that are not modelled. The numeric value for each fraction is indicated below the corresponding segment, with a dot representing fractions  $\leq 5\%$ . The upper red bar (where present) indicates the fraction of residues that have poor fit to the electron density. The numeric value is given above the bar.

Mol	Chain	Length	Quality of chain
1	A	655	

The following table lists non-polymeric compounds, carbohydrate monomers and non-standard residues in protein, DNA, RNA chains that are outliers for geometric or electron-density-fit criteria:

Mol	Type	Chain	Res	Chirality	Geometry	Clashes	Electron density
4	CL	A	1005	-	-	X	-

## 2 Entry composition i

There are 5 unique types of molecules in this entry. The entry contains 5384 atoms, of which 0 are hydrogens and 0 are deuteriums.

In the tables below, the ZeroOcc column contains the number of atoms modelled with zero occupancy, the AltConf column contains the number of residues with at least one atom in alternate conformation and the Trace column contains the number of residues modelled with at most 2 atoms.

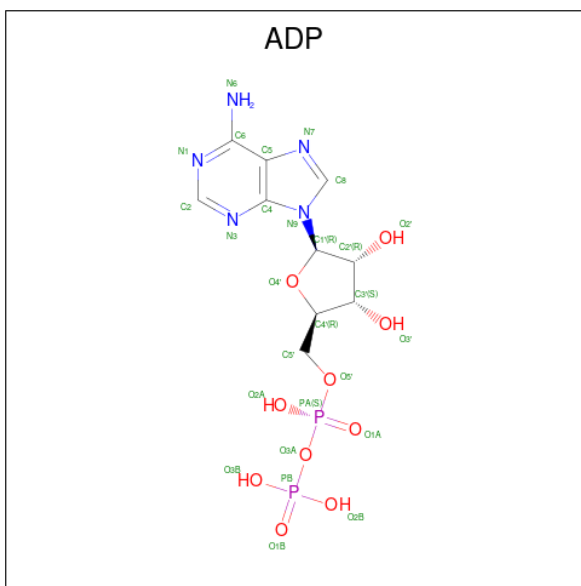
- Molecule 1 is a protein called Putative mRNA splicing factor.

Mol	Chain	Residues	Atoms					ZeroOcc	AltConf	Trace
			Total	C	N	O	S			
1	A	653	5130	3247	896	963	24	0	3	0

There are 3 discrepancies between the modelled and reference sequences:

Chain	Residue	Modelled	Actual	Comment	Reference
A	267	GLY	-	expression tag	UNP G0SEG4
A	268	PRO	-	expression tag	UNP G0SEG4
A	269	MET	-	expression tag	UNP G0SEG4

- Molecule 2 is ADENOSINE-5'-DIPHOSPHATE (CCD ID: ADP) (formula:  $C_{10}H_{15}N_5O_{10}P_2$ ).



Mol	Chain	Residues	Atoms					ZeroOcc	AltConf
			Total	C	N	O	P		
2	A	1	27	10	5	10	2	0	0

- Molecule 3 is MAGNESIUM ION (CCD ID: MG) (formula: Mg).

Mol	Chain	Residues	Atoms		ZeroOcc	AltConf
3	A	1	Total 1	Mg 1	0	0

- Molecule 4 is CHLORIDE ION (CCD ID: CL) (formula: Cl).

Mol	Chain	Residues	Atoms		ZeroOcc	AltConf
4	A	4	Total 4	Cl 4	0	0

- Molecule 5 is water.

Mol	Chain	Residues	Atoms		ZeroOcc	AltConf
5	A	222	Total 222	O 222	0	0

### 3 Residue-property plots [i](#)

These plots are drawn for all protein, RNA, DNA and oligosaccharide chains in the entry. The first graphic for a chain summarises the proportions of the various outlier classes displayed in the second graphic. The second graphic shows the sequence view annotated by issues in geometry and electron density. Residues are color-coded according to the number of geometric quality criteria for which they contain at least one outlier: green = 0, yellow = 1, orange = 2 and red = 3 or more. A red dot above a residue indicates a poor fit to the electron density ( $RSRZ > 2$ ). Stretches of 2 or more consecutive residues without any outlier are shown as a green connector. Residues present in the sample, but not in the model, are shown in grey.

- Molecule 1: Putative mRNA splicing factor



## 4 Data and refinement statistics

Property	Value	Source
Space group	C 1 2 1	Depositor
Cell constants a, b, c, $\alpha$ , $\beta$ , $\gamma$	122.74Å 67.32Å 95.62Å 90.00° 106.46° 90.00°	Depositor
Resolution (Å)	46.41 – 2.05 46.41 – 2.05	Depositor EDS
% Data completeness (in resolution range)	99.5 (46.41-2.05) 99.5 (46.41-2.05)	Depositor EDS
$R_{merge}$	0.04	Depositor
$R_{sym}$	(Not available)	Depositor
$\langle I/\sigma(I) \rangle$ <sup>1</sup>	1.77 (at 2.05Å)	Xtrriage
Refinement program	PHENIX	Depositor
R, $R_{free}$	0.216 , 0.244 0.220 , 0.247	Depositor DCC
$R_{free}$ test set	2344 reflections (5.00%)	wwPDB-VP
Wilson B-factor (Å <sup>2</sup> )	44.8	Xtrriage
Anisotropy	0.357	Xtrriage
Bulk solvent $k_{sol}$ (e/Å <sup>3</sup> ), $B_{sol}$ (Å <sup>2</sup> )	0.33 , 52.8	EDS
L-test for twinning <sup>2</sup>	$\langle  L  \rangle = 0.49$ , $\langle L^2 \rangle = 0.32$	Xtrriage
Estimated twinning fraction	No twinning to report.	Xtrriage
$F_o, F_c$ correlation	0.96	EDS
Total number of atoms	5384	wwPDB-VP
Average B, all atoms (Å <sup>2</sup> )	62.0	wwPDB-VP

Xtrriage's analysis on translational NCS is as follows: *The largest off-origin peak in the Patterson function is 5.67% of the height of the origin peak. No significant pseudotranslation is detected.*

<sup>1</sup>Intensities estimated from amplitudes.

<sup>2</sup>Theoretical values of  $\langle |L| \rangle$ ,  $\langle L^2 \rangle$  for acentric reflections are 0.5, 0.333 respectively for untwinned datasets, and 0.375, 0.2 for perfectly twinned datasets.

## 5 Model quality [i](#)

### 5.1 Standard geometry [i](#)

Bond lengths and bond angles in the following residue types are not validated in this section: ADP, CL, MG

The Z score for a bond length (or angle) is the number of standard deviations the observed value is removed from the expected value. A bond length (or angle) with  $|Z| > 5$  is considered an outlier worth inspection. RMSZ is the root-mean-square of all Z scores of the bond lengths (or angles).

Mol	Chain	Bond lengths		Bond angles	
		RMSZ	# Z  >5	RMSZ	# Z  >5
1	A	0.44	6/5228 (0.1%)	0.90	27/7094 (0.4%)

Chiral center outliers are detected by calculating the chiral volume of a chiral center and verifying if the center is modelled as a planar moiety or with the opposite hand. A planarity outlier is detected by checking planarity of atoms in a peptide group, atoms in a mainchain group or atoms of a sidechain that are expected to be planar.

Mol	Chain	#Chirality outliers	#Planarity outliers
1	A	0	5

All (6) bond length outliers are listed below:

Mol	Chain	Res	Type	Atoms	Z	Observed(Å)	Ideal(Å)
1	A	625	ARG	CZ-NH1	9.38	1.45	1.32
1	A	845	ARG	NE-CZ	-9.08	1.23	1.33
1	A	845	ARG	CB-CG	-8.17	1.27	1.52
1	A	845	ARG	CG-CD	-6.67	1.32	1.52
1	A	845	ARG	CD-NE	-6.48	1.37	1.46
1	A	845	ARG	CZ-NH2	6.15	1.41	1.33

All (27) bond angle outliers are listed below:

Mol	Chain	Res	Type	Atoms	Z	Observed(°)	Ideal(°)
1	A	845	ARG	NE-CZ-NH2	-24.32	97.31	119.20
1	A	625	ARG	CD-NE-CZ	9.24	137.34	124.40
1	A	734	GLU	CA-CB-CG	9.15	132.41	114.10
1	A	845	ARG	NE-CZ-NH1	8.32	129.82	121.50
1	A	625	ARG	N-CA-CB	-7.51	97.25	110.39
1	A	528	GLU	CA-CB-CG	7.29	128.68	114.10
1	A	734	GLU	CB-CG-CD	-7.23	100.31	112.60

*Continued on next page...*

Continued from previous page...

Mol	Chain	Res	Type	Atoms	Z	Observed(°)	Ideal(°)
1	A	528	GLU	N-CA-CB	-7.09	99.73	110.01
1	A	914	ARG	CA-CB-CG	-6.79	100.52	114.10
1	A	268	PRO	N-CA-CB	6.64	110.30	103.00
1	A	625	ARG	CA-CB-CG	6.62	127.34	114.10
1	A	525	ARG	CG-CD-NE	-6.49	97.71	112.00
1	A	710	ARG	NE-CZ-NH2	-6.47	113.38	119.20
1	A	710	ARG	CD-NE-CZ	6.37	133.32	124.40
1	A	486	GLU	CA-CB-CG	6.16	126.43	114.10
1	A	512	PHE	N-CA-CB	6.02	120.32	110.39
1	A	278	GLN	CA-CB-CG	5.91	125.92	114.10
1	A	518	GLU	CA-CB-CG	5.84	125.78	114.10
1	A	628	ARG	CA-CB-CG	5.73	125.56	114.10
1	A	845	ARG	CG-CD-NE	5.67	124.47	112.00
1	A	734	GLU	CB-CA-C	5.54	119.98	110.01
1	A	749	GLU	CA-CB-CG	5.33	124.76	114.10
1	A	525	ARG	N-CA-CB	-5.31	102.32	110.12
1	A	445	ARG	CA-CB-CG	-5.29	103.52	114.10
1	A	914	ARG	CB-CG-CD	5.26	123.41	111.30
1	A	912	GLU	N-CA-CB	5.13	118.38	110.01
1	A	528	GLU	CB-CA-C	5.08	118.86	110.88

There are no chirality outliers.

All (5) planarity outliers are listed below:

Mol	Chain	Res	Type	Group
1	A	512	PHE	Sidechain
1	A	710	ARG	Sidechain
1	A	749	GLU	Sidechain
1	A	775	ASP	Sidechain
1	A	845	ARG	Sidechain

## 5.2 Too-close contacts [i](#)

In the following table, the Non-H and H(model) columns list the number of non-hydrogen atoms and hydrogen atoms in the chain respectively. The H(added) column lists the number of hydrogen atoms added and optimized by MolProbity. The Clashes column lists the number of clashes within the asymmetric unit, whereas Symm-Clashes lists symmetry-related clashes.

Mol	Chain	Non-H	H(model)	H(added)	Clashes	Symm-Clashes
1	A	5130	0	5190	145	0
2	A	27	0	12	3	0

Continued on next page...

*Continued from previous page...*

Mol	Chain	Non-H	H(model)	H(added)	Clashes	Symm-Clashes
3	A	1	0	0	0	0
4	A	4	0	0	2	0
5	A	222	0	0	14	0
All	All	5384	0	5202	146	0

The all-atom clashscore is defined as the number of clashes found per 1000 atoms (including hydrogen atoms). The all-atom clashscore for this structure is 14.

All (146) close contacts within the same asymmetric unit are listed below, sorted by their clash magnitude.

Atom-1	Atom-2	Interatomic distance (Å)	Clash overlap (Å)
1:A:514:THR:OG1	1:A:518:GLU:OE2	1.94	0.84
1:A:683:PRO:O	5:A:1101:HOH:O	1.96	0.83
1:A:355:ALA:O	1:A:359[A]:VAL:HG22	1.79	0.82
2:A:1001:ADP:N7	5:A:1102:HOH:O	2.15	0.80
1:A:893:ILE:HG12	1:A:911:VAL:HG21	1.63	0.77
1:A:891:VAL:HG11	1:A:916:LEU:HD12	1.67	0.75
1:A:870:ASN:O	1:A:871:ASN:ND2	2.19	0.74
1:A:875:TYR:CD2	1:A:902:LYS:HE2	2.25	0.72
1:A:891:VAL:HG11	1:A:916:LEU:CD1	2.21	0.69
1:A:404:VAL:HA	1:A:670:LEU:HD21	1.75	0.69
1:A:915:TRP:O	1:A:918:GLU:HB3	1.94	0.67
1:A:914:ARG:HG2	1:A:914:ARG:HH11	1.58	0.66
1:A:341:LYS:HG2	1:A:344:ARG:HH11	1.61	0.65
1:A:290:ILE:HD13	1:A:366:GLU:HA	1.78	0.64
1:A:377:TYR:HA	1:A:393:TYR:O	1.97	0.64
1:A:780:LEU:HD21	1:A:843:ILE:HG21	1.82	0.62
1:A:724:LEU:HD23	1:A:851:PHE:HZ	1.64	0.62
1:A:675:LEU:HD13	1:A:689:LEU:HD11	1.81	0.62
1:A:353:ARG:HG3	1:A:379[A]:ILE:HD13	1.82	0.61
1:A:501:HIS:CE1	1:A:540:ILE:HD11	2.35	0.61
1:A:717:GLU:HG3	1:A:826:ILE:HD12	1.82	0.61
1:A:796:PRO:HG3	1:A:806:GLN:HE21	1.65	0.60
1:A:528:GLU:O	1:A:531:ARG:HG2	2.02	0.60
1:A:533:LEU:HD23	1:A:537:VAL:HG21	1.83	0.60
1:A:857:ARG:HG3	1:A:868:LEU:HD21	1.84	0.59
1:A:552:GLU:OE2	1:A:807:ARG:NH1	2.35	0.59
1:A:385:THR:HG21	1:A:392:LYS:HE3	1.85	0.59
1:A:749:GLU:OE2	1:A:811:ARG:NE	2.35	0.58
1:A:886:ASP:HB3	1:A:887:PRO:HD3	1.84	0.58
1:A:747:LEU:HD13	1:A:895:HIS:CD2	2.38	0.58

*Continued on next page...*

*Continued from previous page...*

Atom-1	Atom-2	Interatomic distance (Å)	Clash overlap (Å)
1:A:895:HIS:HB3	1:A:907:SER:HB2	1.86	0.58
1:A:896:GLU:OE2	1:A:906:ARG:NH2	2.27	0.57
1:A:452:THR:HG23	1:A:453:LEU:HD13	1.86	0.57
1:A:355:ALA:O	1:A:359[B]:VAL:HB	2.03	0.57
1:A:287:GLN:O	1:A:290:ILE:HG13	2.06	0.56
1:A:545:ILE:HA	1:A:549:MET:SD	2.45	0.56
1:A:576:GLU:OE2	1:A:618:ALA:HB1	2.04	0.56
1:A:829:GLY:N	5:A:1113:HOH:O	2.38	0.56
1:A:341:LYS:HG2	1:A:344:ARG:NH1	2.20	0.56
1:A:789:TRP:NE1	1:A:806:GLN:OE1	2.39	0.56
1:A:715:MET:HE2	1:A:726:LYS:HB2	1.86	0.56
1:A:749:GLU:OE2	1:A:811:ARG:HB2	2.06	0.56
1:A:789:TRP:CE3	1:A:809:LEU:HG	2.41	0.56
1:A:721:GLU:HB2	4:A:1005:CL:CL	2.43	0.55
1:A:623:MET:HE3	1:A:636:ARG:NH2	2.21	0.55
1:A:842:PRO:HA	1:A:845:ARG:HD3	1.88	0.55
1:A:875:TYR:HD2	1:A:902:LYS:HE2	1.71	0.54
1:A:352:ARG:HD3	1:A:574:ILE:HG12	1.88	0.54
1:A:789:TRP:CD2	1:A:809:LEU:HG	2.43	0.54
1:A:741:LEU:HD21	1:A:823:CYS:SG	2.48	0.53
1:A:505:PRO:O	1:A:566:ARG:NH2	2.40	0.53
1:A:653:PRO:HB2	1:A:655:ILE:HG22	1.90	0.53
1:A:279:LYS:NZ	5:A:1106:HOH:O	2.27	0.53
1:A:362:ARG:HD3	2:A:1001:ADP:C2	2.44	0.52
1:A:549:MET:HE1	1:A:557:ILE:HD11	1.92	0.52
1:A:616:ARG:NH2	1:A:649:GLU:OE1	2.43	0.52
1:A:287:GLN:OE1	1:A:290:ILE:HD11	2.09	0.51
1:A:536:ARG:HG3	1:A:537:VAL:HG23	1.93	0.51
1:A:501:HIS:ND1	1:A:540:ILE:HD11	2.26	0.51
1:A:616:ARG:HD3	1:A:643:TYR:O	2.12	0.50
1:A:357:MET:HG3	1:A:379[A]:ILE:HD11	1.92	0.50
1:A:314:GLN:HA	1:A:445:ARG:NH1	2.27	0.49
1:A:550:PRO:O	1:A:554:GLN:HG3	2.13	0.49
1:A:896:GLU:CD	1:A:906:ARG:HH21	2.17	0.48
1:A:357:MET:CG	1:A:379[A]:ILE:HD11	2.43	0.48
1:A:546:TYR:O	1:A:549:MET:HG3	2.14	0.48
1:A:536:ARG:HG3	1:A:537:VAL:N	2.29	0.48
1:A:723:MET:HB2	4:A:1005:CL:CL	2.51	0.48
1:A:278:GLN:HG3	5:A:1273:HOH:O	2.13	0.48
1:A:858:LEU:HG	1:A:865:TYR:CE1	2.48	0.47
1:A:377:TYR:OH	1:A:382:GLU:OE2	2.28	0.47

*Continued on next page...*

*Continued from previous page...*

Atom-1	Atom-2	Interatomic distance (Å)	Clash overlap (Å)
1:A:525:ARG:NH2	5:A:1127:HOH:O	2.47	0.47
1:A:855:ALA:HA	1:A:893:ILE:HD13	1.96	0.47
1:A:902:LYS:HD3	1:A:904:TYR:OH	2.15	0.47
1:A:623:MET:HE1	5:A:1218:HOH:O	2.15	0.47
1:A:914:ARG:HG2	1:A:914:ARG:NH1	2.27	0.47
1:A:776:GLY:HA2	1:A:780:LEU:HD12	1.97	0.47
1:A:756:ARG:HH11	1:A:765:ASP:CG	2.23	0.46
1:A:308:ASP:O	1:A:311:LYS:HB3	2.15	0.46
1:A:754:PHE:CZ	1:A:768:ARG:HG3	2.51	0.46
1:A:394:MET:HE1	1:A:402:GLU:OE1	2.16	0.46
1:A:878:PRO:HA	1:A:883:ARG:HD2	1.98	0.46
1:A:587:VAL:HG23	1:A:626:ALA:HB2	1.98	0.46
1:A:875:TYR:CD2	1:A:902:LYS:CE	2.97	0.46
1:A:625:ARG:NE	1:A:625:ARG:HA	2.30	0.46
1:A:860:ARG:HH11	1:A:860:ARG:HG2	1.79	0.46
1:A:866:ARG:NE	1:A:873:THR:HG22	2.30	0.46
1:A:747:LEU:HD13	1:A:895:HIS:NE2	2.31	0.46
1:A:463:ASP:OD1	1:A:463:ASP:N	2.49	0.45
1:A:652:THR:HG23	1:A:657:ARG:HE	1.81	0.45
1:A:893:ILE:O	1:A:908:VAL:HA	2.16	0.45
1:A:747:LEU:HD11	1:A:779:HIS:CD2	2.51	0.45
1:A:327:THR:CG2	1:A:359[A]:VAL:HG11	2.46	0.45
1:A:535:LYS:NZ	5:A:1132:HOH:O	2.48	0.45
1:A:914:ARG:H	1:A:914:ARG:HG3	1.53	0.44
1:A:380:ARG:HD3	1:A:719:PRO:HB2	1.98	0.44
1:A:778:ASP:OD1	1:A:881:VAL:HG22	2.18	0.44
1:A:790:VAL:HG22	1:A:794:TYR:CE1	2.53	0.44
1:A:764:ALA:HA	1:A:803:PHE:CD2	2.52	0.44
1:A:625:ARG:HD3	5:A:1234:HOH:O	2.18	0.44
1:A:328:THR:O	1:A:332:GLN:HG3	2.17	0.44
1:A:525:ARG:HA	1:A:525:ARG:HD2	1.82	0.44
1:A:754:PHE:CE2	1:A:768:ARG:HG3	2.52	0.44
1:A:290:ILE:HG22	5:A:1318:HOH:O	2.18	0.43
1:A:501:HIS:ND1	1:A:566:ARG:NH1	2.62	0.43
1:A:380:ARG:HG2	1:A:381:PHE:CD2	2.54	0.43
1:A:601:VAL:HG22	1:A:606:GLN:HB3	2.01	0.43
1:A:899:VAL:HG22	1:A:903:GLU:HG3	2.01	0.43
1:A:312:GLU:HB3	5:A:1253:HOH:O	2.19	0.43
1:A:493:ALA:O	1:A:497:VAL:HG23	2.19	0.43
1:A:550:PRO:HD2	1:A:553:MET:SD	2.59	0.43
1:A:501:HIS:CD2	1:A:537:VAL:CG1	3.02	0.43

*Continued on next page...*

*Continued from previous page...*

Atom-1	Atom-2	Interatomic distance (Å)	Clash overlap (Å)
1:A:277:LYS:NZ	1:A:281:GLU:OE2	2.52	0.43
1:A:546:TYR:H	1:A:549:MET:HG3	1.84	0.42
1:A:734:GLU:OE2	1:A:845:ARG:HG3	2.19	0.42
1:A:313:TYR:CD1	1:A:466:PRO:HG2	2.55	0.42
1:A:353:ARG:HG3	1:A:379[A]:ILE:HG21	2.00	0.42
1:A:894:TYR:CB	1:A:905:VAL:HB	2.49	0.42
1:A:779:HIS:ND1	1:A:909:ILE:HG23	2.34	0.42
1:A:710:ARG:HH11	1:A:714:GLN:HE22	1.68	0.42
1:A:784:ASN:O	1:A:788:GLN:HG3	2.20	0.41
1:A:734:GLU:CD	1:A:845:ARG:HG3	2.45	0.41
1:A:806:GLN:O	1:A:806:GLN:HG3	2.20	0.41
1:A:314:GLN:HG3	1:A:444:LEU:O	2.21	0.41
1:A:327:THR:HG22	1:A:359[A]:VAL:HG11	2.01	0.41
1:A:450:SER:OG	1:A:451:ALA:N	2.53	0.41
1:A:479:VAL:CG2	1:A:623:MET:HE2	2.50	0.41
1:A:521:ARG:O	1:A:525:ARG:HB2	2.19	0.41
1:A:332:GLN:O	1:A:336:GLU:HG3	2.20	0.41
1:A:656:GLN:HG2	5:A:1101:HOH:O	2.20	0.41
1:A:919:PHE:HE2	5:A:1236:HOH:O	2.03	0.41
1:A:427:THR:O	1:A:431:LEU:HG	2.20	0.41
1:A:445:ARG:HA	1:A:445:ARG:HD3	1.83	0.41
1:A:545:ILE:HG12	1:A:557:ILE:CD1	2.51	0.41
1:A:660:LEU:O	1:A:664:VAL:HG23	2.21	0.41
1:A:875:TYR:O	1:A:904:TYR:HD1	2.04	0.41
1:A:362:ARG:HB2	2:A:1001:ADP:C6	2.55	0.41
1:A:501:HIS:CD2	1:A:537:VAL:HG13	2.56	0.41
1:A:625:ARG:NE	1:A:625:ARG:CA	2.84	0.41
1:A:334:LEU:HB2	1:A:346:ILE:HD13	2.03	0.41
1:A:332:GLN:NE2	1:A:366:GLU:OE1	2.43	0.40
1:A:508:ASP:CG	1:A:567:LYS:HB3	2.46	0.40
1:A:845:ARG:H	1:A:845:ARG:HG2	1.68	0.40
1:A:379[B]:ILE:CG1	1:A:382:GLU:HB3	2.51	0.40
1:A:382:GLU:OE1	5:A:1103:HOH:O	2.22	0.40
1:A:380:ARG:HH21	1:A:381:PHE:HE2	1.68	0.40

There are no symmetry-related clashes.

## 5.3 Torsion angles [i](#)

### 5.3.1 Protein backbone [i](#)

In the following table, the Percentiles column shows the percent Ramachandran outliers of the chain as a percentile score with respect to all X-ray entries followed by that with respect to entries of similar resolution.

The Analysed column shows the number of residues for which the backbone conformation was analysed, and the total number of residues.

Mol	Chain	Analysed	Favoured	Allowed	Outliers	Percentiles
1	A	654/655 (100%)	639 (98%)	15 (2%)	0	100   100

There are no Ramachandran outliers to report.

### 5.3.2 Protein sidechains [i](#)

In the following table, the Percentiles column shows the percent sidechain outliers of the chain as a percentile score with respect to all X-ray entries followed by that with respect to entries of similar resolution.

The Analysed column shows the number of residues for which the sidechain conformation was analysed, and the total number of residues.

Mol	Chain	Analysed	Rotameric	Outliers	Percentiles
1	A	557/556 (100%)	542 (97%)	15 (3%)	39   36

All (15) residues with a non-rotameric sidechain are listed below:

Mol	Chain	Res	Type
1	A	278	GLN
1	A	299	VAL
1	A	359[A]	VAL
1	A	359[B]	VAL
1	A	453	LEU
1	A	463	ASP
1	A	486	GLU
1	A	512	PHE
1	A	533	LEU
1	A	625	ARG
1	A	749	GLU
1	A	825[A]	ARG
1	A	825[B]	ARG

*Continued on next page...*

*Continued from previous page...*

Mol	Chain	Res	Type
1	A	845	ARG
1	A	871	ASN

Sometimes sidechains can be flipped to improve hydrogen bonding and reduce clashes. All (2) such sidechains are listed below:

Mol	Chain	Res	Type
1	A	504	GLN
1	A	714	GLN

### 5.3.3 RNA [i](#)

There are no RNA molecules in this entry.

## 5.4 Non-standard residues in protein, DNA, RNA chains [i](#)

There are no non-standard protein/DNA/RNA residues in this entry.

## 5.5 Carbohydrates [i](#)

There are no oligosaccharides in this entry.

## 5.6 Ligand geometry [i](#)

Of 6 ligands modelled in this entry, 5 are monoatomic - leaving 1 for Mogul analysis.

In the following table, the Counts columns list the number of bonds (or angles) for which Mogul statistics could be retrieved, the number of bonds (or angles) that are observed in the model and the number of bonds (or angles) that are defined in the Chemical Component Dictionary. The Link column lists molecule types, if any, to which the group is linked. The Z score for a bond length (or angle) is the number of standard deviations the observed value is removed from the expected value. A bond length (or angle) with  $|Z| > 2$  is considered an outlier worth inspection. RMSZ is the root-mean-square of all Z scores of the bond lengths (or angles).

Mol	Type	Chain	Res	Link	Bond lengths			Bond angles		
					Counts	RMSZ	$\# Z  > 2$	Counts	RMSZ	$\# Z  > 2$
2	ADP	A	1001	3	28,29,29	1.42	5 (17%)	43,45,45	1.86	10 (23%)

In the following table, the Chirals column lists the number of chiral outliers, the number of chiral centers analysed, the number of these observed in the model and the number defined in the

Chemical Component Dictionary. Similar counts are reported in the Torsion and Rings columns. '-' means no outliers of that kind were identified.

Mol	Type	Chain	Res	Link	Chirals	Torsions	Rings
2	ADP	A	1001	3	-	2/16/32/32	0/3/3/3

All (5) bond length outliers are listed below:

Mol	Chain	Res	Type	Atoms	Z	Observed(Å)	Ideal(Å)
2	A	1001	ADP	C5-C4	4.63	1.47	1.39
2	A	1001	ADP	C5-C6	2.81	1.48	1.41
2	A	1001	ADP	C8-N7	2.39	1.36	1.31
2	A	1001	ADP	C5-N7	-2.19	1.35	1.39
2	A	1001	ADP	PA-O3A	2.07	1.61	1.59

All (10) bond angle outliers are listed below:

Mol	Chain	Res	Type	Atoms	Z	Observed(°)	Ideal(°)
2	A	1001	ADP	C5-C4-N3	-5.76	118.78	126.72
2	A	1001	ADP	N3-C4-N9	4.41	134.67	127.17
2	A	1001	ADP	C4-C5-N7	-3.84	106.19	110.58
2	A	1001	ADP	C2-N3-C4	3.74	120.95	111.83
2	A	1001	ADP	N3-C2-N1	-3.33	123.54	128.58
2	A	1001	ADP	C5-N7-C8	2.86	107.95	103.45
2	A	1001	ADP	C4-N9-C8	2.74	108.61	105.74
2	A	1001	ADP	C6-C5-N7	2.33	136.57	132.09
2	A	1001	ADP	N9-C8-N7	-2.28	110.70	113.94
2	A	1001	ADP	O4'-C1'-N9	2.16	112.23	108.09

There are no chirality outliers.

All (2) torsion outliers are listed below:

Mol	Chain	Res	Type	Atoms
2	A	1001	ADP	PA-O3A-PB-O3B
2	A	1001	ADP	PA-O3A-PB-O1B

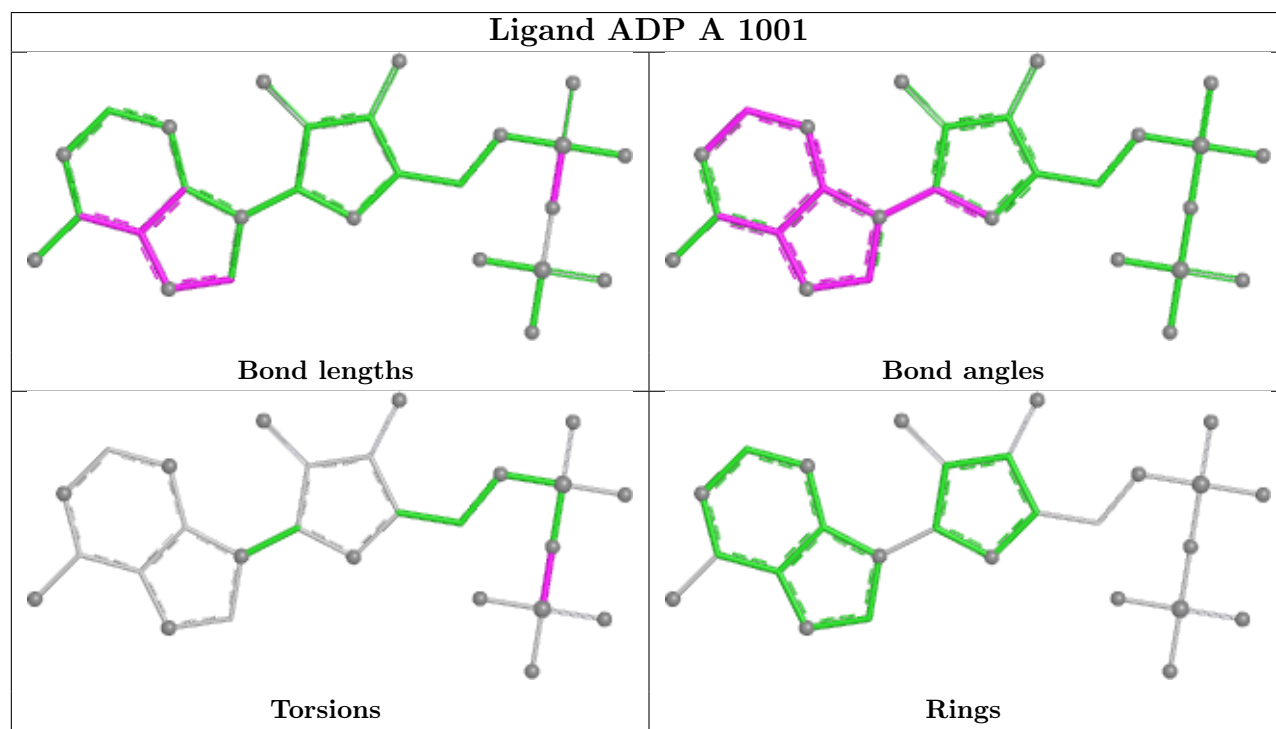
There are no ring outliers.

1 monomer is involved in 3 short contacts:

Mol	Chain	Res	Type	Clashes	Symm-Clashes
2	A	1001	ADP	3	0

The following is a two-dimensional graphical depiction of Mogul quality analysis of bond lengths,

bond angles, torsion angles, and ring geometry for all instances of the Ligand of Interest. In addition, ligands with molecular weight > 250 and outliers as shown on the validation Tables will also be included. For torsion angles, if less than 5% of the Mogul distribution of torsion angles is within 10 degrees of the torsion angle in question, then that torsion angle is considered an outlier. Any bond that is central to one or more torsion angles identified as an outlier by Mogul will be highlighted in the graph. For rings, the root-mean-square deviation (RMSD) between the ring in question and similar rings identified by Mogul is calculated over all ring torsion angles. If the average RMSD is greater than 60 degrees and the minimal RMSD between the ring in question and any Mogul-identified rings is also greater than 60 degrees, then that ring is considered an outlier. The outliers are highlighted in purple. The color gray indicates Mogul did not find sufficient equivalents in the CSD to analyse the geometry.



## 5.7 Other polymers [i](#)

There are no such residues in this entry.

## 5.8 Polymer linkage issues [i](#)

There are no chain breaks in this entry.

## 6 Fit of model and data [i](#)

### 6.1 Protein, DNA and RNA chains [i](#)

In the following table, the column labelled ‘#RSRZ> 2’ contains the number (and percentage) of RSRZ outliers, followed by percent RSRZ outliers for the chain as percentile scores relative to all X-ray entries and entries of similar resolution. The OWAB column contains the minimum, median, 95<sup>th</sup> percentile and maximum values of the occupancy-weighted average B-factor per residue. The column labelled ‘Q< 0.9’ lists the number of (and percentage) of residues with an average occupancy less than 0.9.

Mol	Chain	Analysed	<RSRZ>	#RSRZ>2	OWAB(Å <sup>2</sup> )	Q<0.9
1	A	653/655 (99%)	0.69	41 (6%) 26 26	19, 59, 101, 155	3 (0%)

All (41) RSRZ outliers are listed below:

Mol	Chain	Res	Type	RSRZ
1	A	916	LEU	5.1
1	A	453	LEU	4.7
1	A	919	PHE	4.3
1	A	268	PRO	4.2
1	A	895	HIS	3.7
1	A	920	GLY	3.4
1	A	900	THR	3.3
1	A	776	GLY	3.3
1	A	379[A]	ILE	3.1
1	A	858	LEU	3.1
1	A	915	TRP	2.9
1	A	871	ASN	2.9
1	A	451	ALA	2.9
1	A	450	SER	2.8
1	A	911	VAL	2.7
1	A	861	ALA	2.7
1	A	269	MET	2.6
1	A	343	ASN	2.6
1	A	809	LEU	2.6
1	A	762	VAL	2.5
1	A	904	TYR	2.5
1	A	452	THR	2.4
1	A	873	THR	2.4
1	A	721	GLU	2.3
1	A	760	LYS	2.3
1	A	755	PHE	2.3
1	A	448	ILE	2.3

*Continued on next page...*

*Continued from previous page...*

Mol	Chain	Res	Type	RSRZ
1	A	771	PHE	2.2
1	A	304	ASP	2.2
1	A	773	VAL	2.1
1	A	862	GLY	2.1
1	A	759	ASP	2.1
1	A	868	LEU	2.1
1	A	864	GLY	2.1
1	A	869	LYS	2.1
1	A	884	GLY	2.1
1	A	390	ILE	2.1
1	A	758	LYS	2.1
1	A	675	LEU	2.0
1	A	872	ILE	2.0
1	A	763	HIS	2.0

## 6.2 Non-standard residues in protein, DNA, RNA chains [i](#)

There are no non-standard protein/DNA/RNA residues in this entry.

## 6.3 Carbohydrates [i](#)

There are no oligosaccharides in this entry.

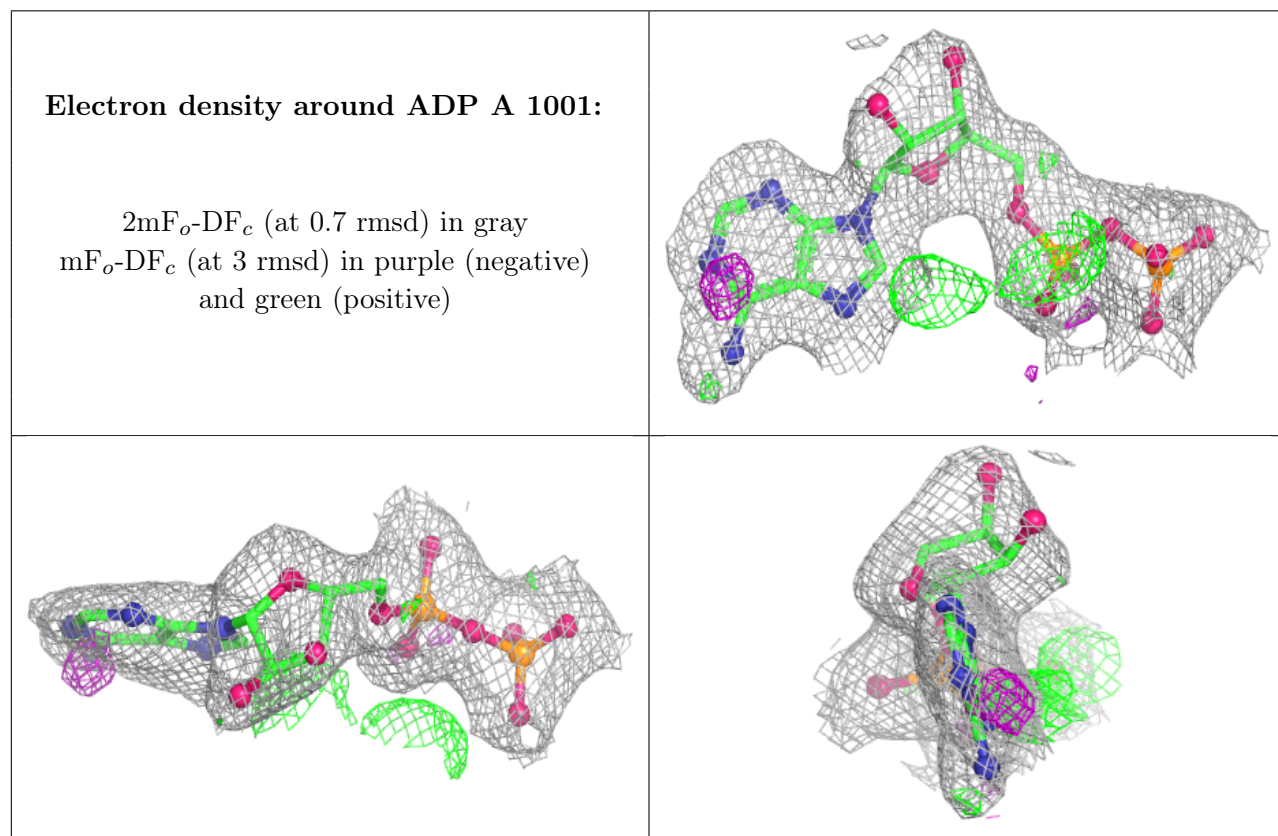
## 6.4 Ligands [i](#)

In the following table, the Atoms column lists the number of modelled atoms in the group and the number defined in the chemical component dictionary. The B-factors column lists the minimum, median, 95<sup>th</sup> percentile and maximum values of B factors of atoms in the group. The column labelled 'Q<0.9' lists the number of atoms with occupancy less than 0.9.

Mol	Type	Chain	Res	Atoms	RSCC	RSR	B-factors(Å <sup>2</sup> )	Q<0.9
4	CL	A	1005	1/1	0.74	0.24	133,133,133,133	0
4	CL	A	1004	1/1	0.86	0.11	91,91,91,91	0
4	CL	A	1006	1/1	0.88	0.14	87,87,87,87	0
2	ADP	A	1001	27/27	0.94	0.10	36,62,69,78	0
3	MG	A	1002	1/1	0.97	0.05	40,40,40,40	0
4	CL	A	1003	1/1	0.98	0.07	42,42,42,42	0

The following is a graphical depiction of the model fit to experimental electron density of all instances of the Ligand of Interest. In addition, ligands with molecular weight > 250 and outliers

as shown on the geometry validation Tables will also be included. Each fit is shown from different orientation to approximate a three-dimensional view.



## 6.5 Other polymers [i](#)

There are no such residues in this entry.