



wwPDB X-ray Structure Validation Summary Report ⓘ

Mar 6, 2026 – 07:43 PM UTC

PDB ID : 6FAL / pdb_00006fal
Title : Tryptophan Repressor TrpR from E.coli with 3-Indolepropionic acid as ligand
Authors : Stiel, A.C.; Shanmugaratnam, S.; Hocker, B.
Deposited on : 2017-12-15
Resolution : 1.20 Å(reported)

This is a wwPDB X-ray Structure Validation Summary Report for a publicly released PDB entry.

We welcome your comments at validation@mail.wwpdb.org

A user guide is available at

<https://www.wwpdb.org/validation/2017/XrayValidationReportHelp>

with specific help available everywhere you see the ⓘ symbol.

The types of validation reports are described at

<http://www.wwpdb.org/validation/2017/FAQs#types>.

The following versions of software and data (see [references ⓘ](#)) were used in the production of this report:

MolProbity : 4-5-2 with Phenix2.0
Mogul : 2022.3.0, CSD as543be (2022)
Xtriage (Phenix) : 2.0
EDS : 3.0
Percentile statistics : 20250101.v01 (using entries in the PDB archive January 1st 2025)
CCP4 : 9.0.010 (Gargrove)
Density-Fitness : 1.0.12
Ideal geometry (proteins) : Engh & Huber (2001)
Ideal geometry (DNA, RNA) : Parkinson et al. (1996)
Validation Pipeline (wwPDB-VP) : 2.49

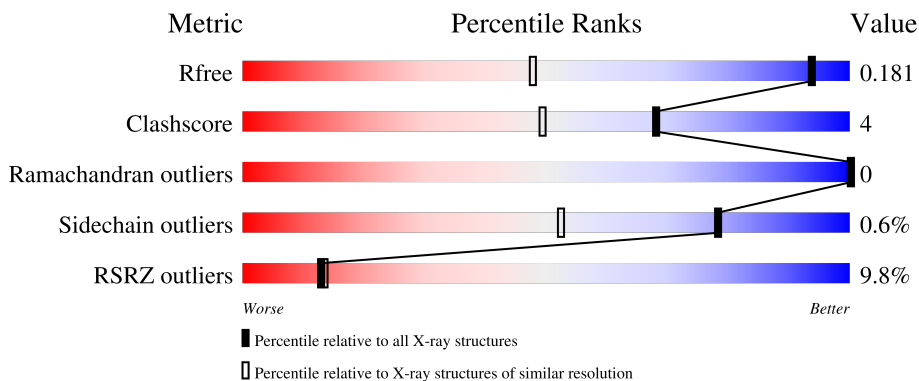
1 Overall quality at a glance

The following experimental techniques were used to determine the structure:

X-RAY DIFFRACTION

The reported resolution of this entry is 1.20 Å.

Percentile scores (ranging between 0-100) for global validation metrics of the entry are shown in the following graphic. The table shows the number of entries on which the scores are based.



Metric	Whole archive (#Entries)	Similar resolution (#Entries, resolution range(Å))
R_{free}	180053	1216 (1.20-1.20)
Clashscore	190562	1265 (1.20-1.20)
Ramachandran outliers	187476	1226 (1.20-1.20)
Sidechain outliers	187428	1226 (1.20-1.20)
RSRZ outliers	180081	1214 (1.20-1.20)

The table below summarises the geometric issues observed across the polymeric chains and their fit to the electron density. The red, orange, yellow and green segments of the lower bar indicate the fraction of residues that contain outliers for ≥ 3 , 2, 1 and 0 types of geometric quality criteria respectively. A grey segment represents the fraction of residues that are not modelled. The numeric value for each fraction is indicated below the corresponding segment, with a dot representing fractions $\leq 5\%$. The upper red bar (where present) indicates the fraction of residues that have poor fit to the electron density. The numeric value is given above the bar.

Mol	Chain	Length	Quality of chain
1	A	115	 10% 78% 6% 16%
1	B	115	 6% 75% 10% 16%

2 Entry composition i

There are 3 unique types of molecules in this entry. The entry contains 3550 atoms, of which 1681 are hydrogens and 0 are deuteriums.

In the tables below, the ZeroOcc column contains the number of atoms modelled with zero occupancy, the AltConf column contains the number of residues with at least one atom in alternate conformation and the Trace column contains the number of residues modelled with at most 2 atoms.

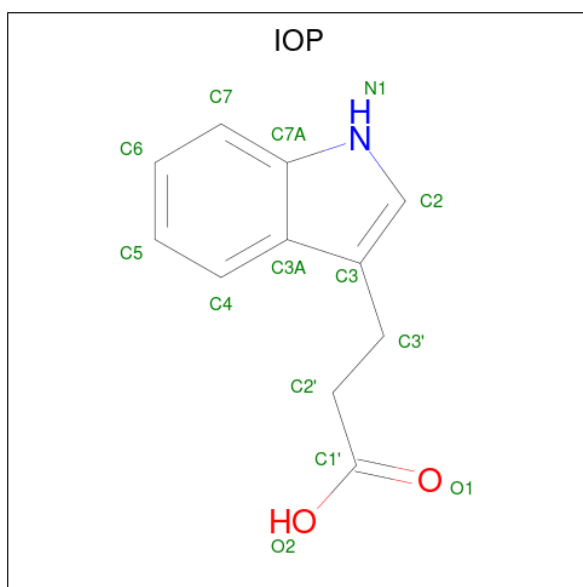
- Molecule 1 is a protein called Trp operon repressor.

Mol	Chain	Residues	Atoms					ZeroOcc	AltConf	Trace	
			Total	C	H	N	O				S
1	A	97	1622	504	823	147	145	3	0	1	0
1	B	97	1658	516	840	148	151	3	0	4	0

There are 18 discrepancies between the modelled and reference sequences:

Chain	Residue	Modelled	Actual	Comment	Reference
A	88	TYR	SER	conflict	UNP P0A881
A	109	LEU	-	expression tag	UNP P0A881
A	110	GLU	-	expression tag	UNP P0A881
A	111	HIS	-	expression tag	UNP P0A881
A	112	HIS	-	expression tag	UNP P0A881
A	113	HIS	-	expression tag	UNP P0A881
A	114	HIS	-	expression tag	UNP P0A881
A	115	HIS	-	expression tag	UNP P0A881
A	116	HIS	-	expression tag	UNP P0A881
B	88	TYR	SER	conflict	UNP P0A881
B	109	LEU	-	expression tag	UNP P0A881
B	110	GLU	-	expression tag	UNP P0A881
B	111	HIS	-	expression tag	UNP P0A881
B	112	HIS	-	expression tag	UNP P0A881
B	113	HIS	-	expression tag	UNP P0A881
B	114	HIS	-	expression tag	UNP P0A881
B	115	HIS	-	expression tag	UNP P0A881
B	116	HIS	-	expression tag	UNP P0A881

- Molecule 2 is INDOLYLPROPIONIC ACID (CCD ID: IOP) (formula: C₁₁H₁₁NO₂).



Mol	Chain	Residues	Atoms				ZeroOcc	AltConf	
			Total	C	H	N			O
2	A	1	23	11	9	1	2	0	0
2	B	1	23	11	9	1	2	0	0

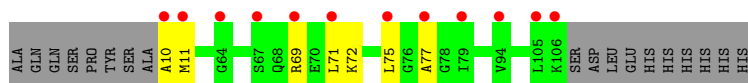
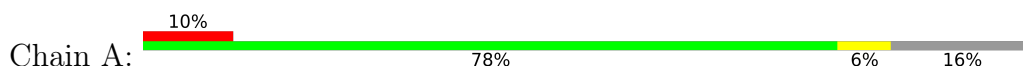
- Molecule 3 is water.

Mol	Chain	Residues	Atoms		ZeroOcc	AltConf
			Total	O		
3	A	103	103	103	0	0
3	B	121	121	121	0	0

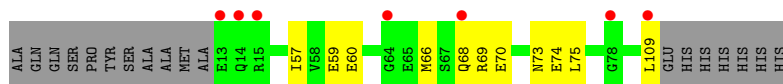
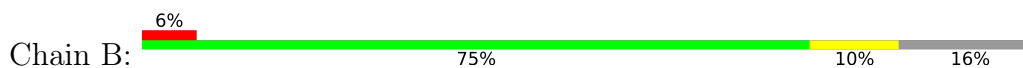
3 Residue-property plots [i](#)

These plots are drawn for all protein, RNA, DNA and oligosaccharide chains in the entry. The first graphic for a chain summarises the proportions of the various outlier classes displayed in the second graphic. The second graphic shows the sequence view annotated by issues in geometry and electron density. Residues are color-coded according to the number of geometric quality criteria for which they contain at least one outlier: green = 0, yellow = 1, orange = 2 and red = 3 or more. A red dot above a residue indicates a poor fit to the electron density ($RSRZ > 2$). Stretches of 2 or more consecutive residues without any outlier are shown as a green connector. Residues present in the sample, but not in the model, are shown in grey.

- Molecule 1: Trp operon repressor



- Molecule 1: Trp operon repressor



4 Data and refinement statistics

Property	Value	Source
Space group	P 1 21 1	Depositor
Cell constants a, b, c, α , β , γ	36.07Å 45.25Å 60.67Å 90.00° 104.02° 90.00°	Depositor
Resolution (Å)	35.88 – 1.20 35.88 – 1.20	Depositor EDS
% Data completeness (in resolution range)	99.0 (35.88-1.20) 99.4 (35.88-1.20)	Depositor EDS
R_{merge}	0.06	Depositor
R_{sym}	(Not available)	Depositor
$\langle I/\sigma(I) \rangle$ ¹	2.90 (at 1.20Å)	Xtrriage
Refinement program	PHENIX	Depositor
R, R_{free}	0.162 , 0.179 0.165 , 0.181	Depositor DCC
R_{free} test set	2953 reflections (5.00%)	wwPDB-VP
Wilson B-factor (Å ²)	11.4	Xtrriage
Anisotropy	0.127	Xtrriage
Bulk solvent k_{sol} (e/Å ³), B_{sol} (Å ²)	0.44 , 39.4	EDS
L-test for twinning ²	$\langle L \rangle = 0.49$, $\langle L^2 \rangle = 0.32$	Xtrriage
Estimated twinning fraction	No twinning to report.	Xtrriage
F_o, F_c correlation	0.96	EDS
Total number of atoms	3550	wwPDB-VP
Average B, all atoms (Å ²)	22.0	wwPDB-VP

Xtrriage's analysis on translational NCS is as follows: *The largest off-origin peak in the Patterson function is 8.76% of the height of the origin peak. No significant pseudotranslation is detected.*

¹Intensities estimated from amplitudes.

²Theoretical values of $\langle |L| \rangle$, $\langle L^2 \rangle$ for acentric reflections are 0.5, 0.333 respectively for untwinned datasets, and 0.375, 0.2 for perfectly twinned datasets.

5 Model quality

5.1 Standard geometry

Bond lengths and bond angles in the following residue types are not validated in this section: IOP

The Z score for a bond length (or angle) is the number of standard deviations the observed value is removed from the expected value. A bond length (or angle) with $|Z| > 5$ is considered an outlier worth inspection. RMSZ is the root-mean-square of all Z scores of the bond lengths (or angles).

Mol	Chain	Bond lengths		Bond angles	
		RMSZ	# Z >5	RMSZ	# Z >5
1	A	0.52	0/813	0.61	0/1096
1	B	0.56	0/841	0.66	0/1134
All	All	0.54	0/1654	0.63	0/2230

There are no bond length outliers.

There are no bond angle outliers.

There are no chirality outliers.

There are no planarity outliers.

5.2 Too-close contacts

In the following table, the Non-H and H(model) columns list the number of non-hydrogen atoms and hydrogen atoms in the chain respectively. The H(added) column lists the number of hydrogen atoms added and optimized by MolProbity. The Clashes column lists the number of clashes within the asymmetric unit, whereas Symm-Clashes lists symmetry-related clashes.

Mol	Chain	Non-H	H(model)	H(added)	Clashes	Symm-Clashes
1	A	799	823	824	4	1
1	B	818	840	844	8	0
2	A	14	9	10	0	0
2	B	14	9	10	0	0
3	A	103	0	0	1	2
3	B	121	0	0	5	3
All	All	1869	1681	1688	12	3

The all-atom clashscore is defined as the number of clashes found per 1000 atoms (including hydrogen atoms). The all-atom clashscore for this structure is 4.

The worst 5 of 12 close contacts within the same asymmetric unit are listed below, sorted by their

clash magnitude.

Atom-1	Atom-2	Interatomic distance (Å)	Clash overlap (Å)
1:B:60:GLU:OE2	3:B:301:HOH:O	1.97	0.82
1:B:66[B]:MET:HE1	1:B:74:GLU:HG2	1.71	0.70
1:B:59:GLU:OE2	3:B:302:HOH:O	2.15	0.65
1:B:109:LEU:O	3:B:303:HOH:O	2.15	0.63
1:A:72:LYS:HG3	1:A:77:ALA:O	2.04	0.58

All (3) symmetry-related close contacts are listed below. The label for Atom-2 includes the symmetry operator and encoded unit-cell translations to be applied.

Atom-1	Atom-2	Interatomic distance (Å)	Clash overlap (Å)
3:A:370:HOH:O	3:B:408:HOH:O[2_454]	1.92	0.28
3:A:378:HOH:O	3:B:302:HOH:O[2_444]	2.04	0.16
1:A:11:MET:SD	3:B:336:HOH:O[2_554]	2.12	0.08

5.3 Torsion angles [i](#)

5.3.1 Protein backbone [i](#)

In the following table, the Percentiles column shows the percent Ramachandran outliers of the chain as a percentile score with respect to all X-ray entries followed by that with respect to entries of similar resolution.

The Analysed column shows the number of residues for which the backbone conformation was analysed, and the total number of residues.

Mol	Chain	Analysed	Favoured	Allowed	Outliers	Percentiles	
1	A	96/115 (84%)	96 (100%)	0	0	100	100
1	B	99/115 (86%)	99 (100%)	0	0	100	100
All	All	195/230 (85%)	195 (100%)	0	0	100	100

There are no Ramachandran outliers to report.

5.3.2 Protein sidechains [i](#)

In the following table, the Percentiles column shows the percent sidechain outliers of the chain as a percentile score with respect to all X-ray entries followed by that with respect to entries of similar resolution.

The Analysed column shows the number of residues for which the sidechain conformation was analysed, and the total number of residues.

Mol	Chain	Analysed	Rotameric	Outliers	Percentiles	
1	A	85/100 (85%)	85 (100%)	0	100	100
1	B	90/100 (90%)	88 (98%)	2 (2%)	45	10
All	All	175/200 (88%)	173 (99%)	2 (1%)	78	31

All (2) residues with a non-rotameric sidechain are listed below:

Mol	Chain	Res	Type
1	B	73[A]	ASN
1	B	73[B]	ASN

Sometimes sidechains can be flipped to improve hydrogen bonding and reduce clashes. All (4) such sidechains are listed below:

Mol	Chain	Res	Type
1	A	16	HIS
1	A	17	GLN
1	A	32	ASN
1	B	32	ASN

5.3.3 RNA [i](#)

There are no RNA molecules in this entry.

5.4 Non-standard residues in protein, DNA, RNA chains [i](#)

There are no non-standard protein/DNA/RNA residues in this entry.

5.5 Carbohydrates [i](#)

There are no oligosaccharides in this entry.

5.6 Ligand geometry [i](#)

2 ligands are modelled in this entry.

In the following table, the Counts columns list the number of bonds (or angles) for which Mogul statistics could be retrieved, the number of bonds (or angles) that are observed in the model and

the number of bonds (or angles) that are defined in the Chemical Component Dictionary. The Link column lists molecule types, if any, to which the group is linked. The Z score for a bond length (or angle) is the number of standard deviations the observed value is removed from the expected value. A bond length (or angle) with $|Z| > 2$ is considered an outlier worth inspection. RMSZ is the root-mean-square of all Z scores of the bond lengths (or angles).

Mol	Type	Chain	Res	Link	Bond lengths			Bond angles		
					Counts	RMSZ	# Z > 2	Counts	RMSZ	# Z > 2
2	IOP	B	201	-	15,15,15	1.75	4 (26%)	20,20,20	1.30	2 (10%)
2	IOP	A	201	-	15,15,15	1.50	4 (26%)	20,20,20	1.25	3 (15%)

In the following table, the Chirals column lists the number of chiral outliers, the number of chiral centers analysed, the number of these observed in the model and the number defined in the Chemical Component Dictionary. Similar counts are reported in the Torsion and Rings columns. '-' means no outliers of that kind were identified.

Mol	Type	Chain	Res	Link	Chirals	Torsions	Rings
2	IOP	B	201	-	-	2/5/5/5	0/2/2/2
2	IOP	A	201	-	-	0/5/5/5	0/2/2/2

The worst 5 of 8 bond length outliers are listed below:

Mol	Chain	Res	Type	Atoms	Z	Observed(Å)	Ideal(Å)
2	B	201	IOP	C3A-C7A	3.54	1.45	1.41
2	B	201	IOP	C5-C4	-3.15	1.33	1.38
2	A	201	IOP	C2-C3	2.70	1.40	1.36
2	B	201	IOP	C2-C3	2.44	1.40	1.36
2	A	201	IOP	C5-C4	-2.25	1.35	1.38

All (5) bond angle outliers are listed below:

Mol	Chain	Res	Type	Atoms	Z	Observed(°)	Ideal(°)
2	A	201	IOP	O2-C1'-O1	-2.70	116.38	123.33
2	B	201	IOP	C4-C3A-C7A	-2.55	116.19	118.84
2	B	201	IOP	C3A-C3-C2	-2.30	103.81	106.16
2	A	201	IOP	C7A-N1-C2	-2.29	107.04	109.08
2	A	201	IOP	C6-C5-C4	2.03	122.75	120.24

There are no chirality outliers.

All (2) torsion outliers are listed below:

Mol	Chain	Res	Type	Atoms
2	B	201	IOP	O2-C1'-C2'-C3'

Continued on next page...

Continued from previous page...

Mol	Chain	Res	Type	Atoms
2	B	201	IOP	O1-C1'-C2'-C3'

There are no ring outliers.

No monomer is involved in short contacts.

5.7 Other polymers [i](#)

There are no such residues in this entry.

5.8 Polymer linkage issues [i](#)

There are no chain breaks in this entry.

6 Fit of model and data [i](#)

6.1 Protein, DNA and RNA chains [i](#)

In the following table, the column labelled ‘#RSRZ > 2’ contains the number (and percentage) of RSRZ outliers, followed by percent RSRZ outliers for the chain as percentile scores relative to all X-ray entries and entries of similar resolution. The OWAB column contains the minimum, median, 95th percentile and maximum values of the occupancy-weighted average B-factor per residue. The column labelled ‘Q < 0.9’ lists the number of (and percentage) of residues with an average occupancy less than 0.9.

Mol	Chain	Analysed	<RSRZ>	#RSRZ>2	OWAB(Å ²)	Q<0.9
1	A	97/115 (84%)	0.50	12 (12%) 8 9	8, 20, 43, 72	1 (1%)
1	B	97/115 (84%)	0.42	7 (7%) 21 22	9, 16, 46, 69	4 (4%)
All	All	194/230 (84%)	0.46	19 (9%) 13 13	8, 18, 44, 72	5 (2%)

The worst 5 of 19 RSRZ outliers are listed below:

Mol	Chain	Res	Type	RSRZ
1	B	109	LEU	5.6
1	A	10	ALA	5.4
1	A	11	MET	4.3
1	B	64	GLY	3.3
1	A	71	LEU	3.0

6.2 Non-standard residues in protein, DNA, RNA chains [i](#)

There are no non-standard protein/DNA/RNA residues in this entry.

6.3 Carbohydrates [i](#)

There are no oligosaccharides in this entry.

6.4 Ligands [i](#)

In the following table, the Atoms column lists the number of modelled atoms in the group and the number defined in the chemical component dictionary. The B-factors column lists the minimum, median, 95th percentile and maximum values of B factors of atoms in the group. The column labelled ‘Q < 0.9’ lists the number of atoms with occupancy less than 0.9.

Mol	Type	Chain	Res	Atoms	RSCC	RSR	B-factors(\AA^2)	Q<0.9
2	IOP	B	201	14/14	0.94	0.08	9,12,17,18	0
2	IOP	A	201	14/14	0.95	0.08	12,15,19,21	0

6.5 Other polymers [i](#)

There are no such residues in this entry.