



# wwPDB X-ray Structure Validation Summary Report ⓘ

Mar 6, 2026 – 09:48 PM UTC

PDB ID : 8FBU / pdb\_00008fbu  
Title : Crystal structure of *Cryptosporidium parvum* N-myristoyltransferase with bound myristoyl-CoA and Compound-2  
Authors : Staker, B.L.; Fenwick, M.K.; Seattle Structural Genomics Center for Infectious Disease (SSGCID)  
Deposited on : 2022-11-30  
Resolution : 2.00 Å(reported)

This is a wwPDB X-ray Structure Validation Summary Report for a publicly released PDB entry.

We welcome your comments at [validation@mail.wwpdb.org](mailto:validation@mail.wwpdb.org)

A user guide is available at

<https://www.wwpdb.org/validation/2017/XrayValidationReportHelp>

with specific help available everywhere you see the ⓘ symbol.

The types of validation reports are described at

<http://www.wwpdb.org/validation/2017/FAQs#types>.

---

The following versions of software and data (see [references ⓘ](#)) were used in the production of this report:

MolProbity : 4-5-2 with Phenix2.0  
Mogul : 2022.3.0, CSD as543be (2022)  
Xtrriage (Phenix) : 2.0  
EDS : 3.0  
Buster-report : wwPDB partial adaption of 1.1.7 (2018)  
Percentile statistics : 20250101.v01 (using entries in the PDB archive January 1st 2025)  
CCP4 : 9.0.010 (Gargrove)  
Density-Fitness : 1.0.12  
Ideal geometry (proteins) : Engh & Huber (2001)  
Ideal geometry (DNA, RNA) : Parkinson et al. (1996)  
Validation Pipeline (wwPDB-VP) : 2.49

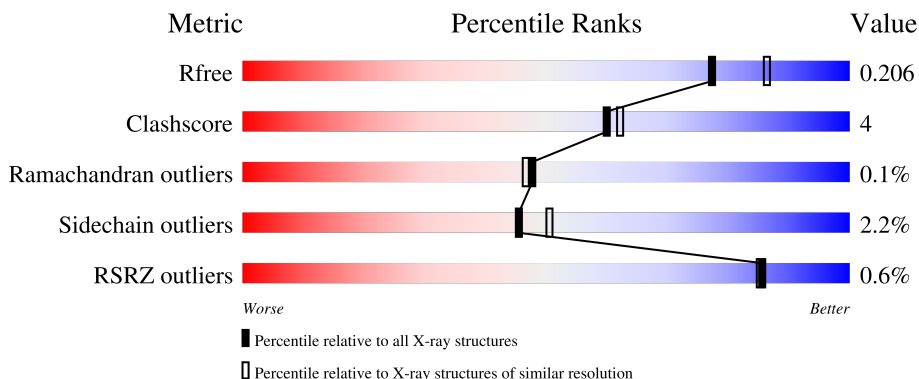
# 1 Overall quality at a glance

The following experimental techniques were used to determine the structure:

*X-RAY DIFFRACTION*



The reported resolution of this entry is 2.00 Å.

Percentile scores (ranging between 0-100) for global validation metrics of the entry are shown in the following graphic. The table shows the number of entries on which the scores are based.



Metric	Whole archive (#Entries)	Similar resolution (#Entries, resolution range(Å))
$R_{free}$	180053	10052 (2.00-2.00)
Clashscore	190562	11152 (2.00-2.00)
Ramachandran outliers	187476	11031 (2.00-2.00)
Sidechain outliers	187428	11029 (2.00-2.00)
RSRZ outliers	180081	10067 (2.00-2.00)

The table below summarises the geometric issues observed across the polymeric chains and their fit to the electron density. The red, orange, yellow and green segments of the lower bar indicate the fraction of residues that contain outliers for  $\geq 3$ , 2, 1 and 0 types of geometric quality criteria respectively. A grey segment represents the fraction of residues that are not modelled. The numeric value for each fraction is indicated below the corresponding segment, with a dot representing fractions  $\leq 5\%$ . The upper red bar (where present) indicates the fraction of residues that have poor fit to the electron density. The numeric value is given above the bar.

Mol	Chain	Length	Quality of chain
1	A	431	 85% 13% .
1	B	431	 88% 10% .

## 2 Entry composition

There are 9 unique types of molecules in this entry. The entry contains 15601 atoms, of which 7479 are hydrogens and 0 are deuteriums.

In the tables below, the ZeroOcc column contains the number of atoms modelled with zero occupancy, the AltConf column contains the number of residues with at least one atom in alternate conformation and the Trace column contains the number of residues modelled with at most 2 atoms.

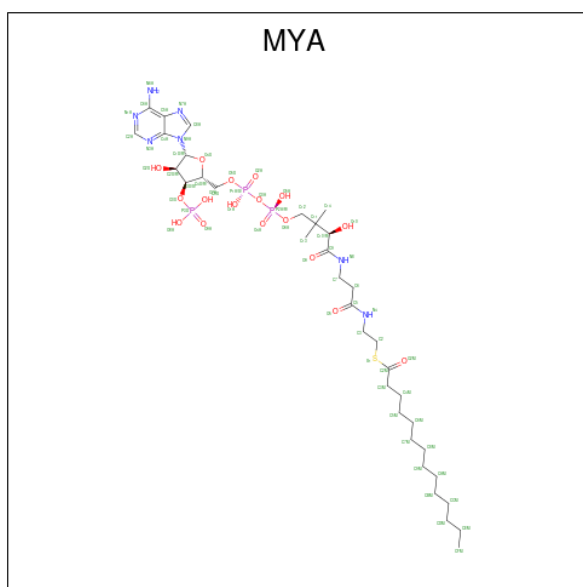
- Molecule 1 is a protein called Glycylpeptide N-tetradecanoyltransferase.

Mol	Chain	Residues	Atoms						ZeroOcc	AltConf	Trace
			Total	C	H	N	O	S			
1	A	426	7361	2377	3666	624	674	20	0	24	0
1	B	426	7188	2329	3570	611	656	22	0	19	0

There are 8 discrepancies between the modelled and reference sequences:

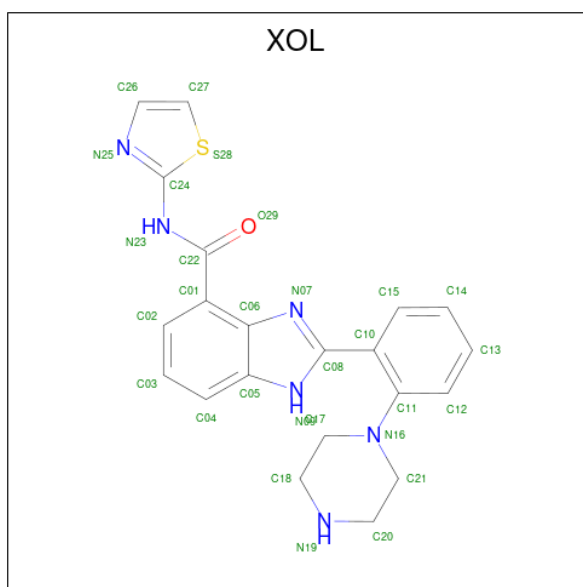
Chain	Residue	Modelled	Actual	Comment	Reference
A	36	GLY	-	expression tag	UNP Q5CV46
A	37	PRO	-	expression tag	UNP Q5CV46
A	38	GLY	-	expression tag	UNP Q5CV46
A	39	SER	-	expression tag	UNP Q5CV46
B	36	GLY	-	expression tag	UNP Q5CV46
B	37	PRO	-	expression tag	UNP Q5CV46
B	38	GLY	-	expression tag	UNP Q5CV46
B	39	SER	-	expression tag	UNP Q5CV46

- Molecule 2 is TETRADECANOYL-COA (CCD ID: MYA) (formula:  $C_{35}H_{62}N_7O_{17}P_3S$ ) (labeled as "Ligand of Interest" by depositor).



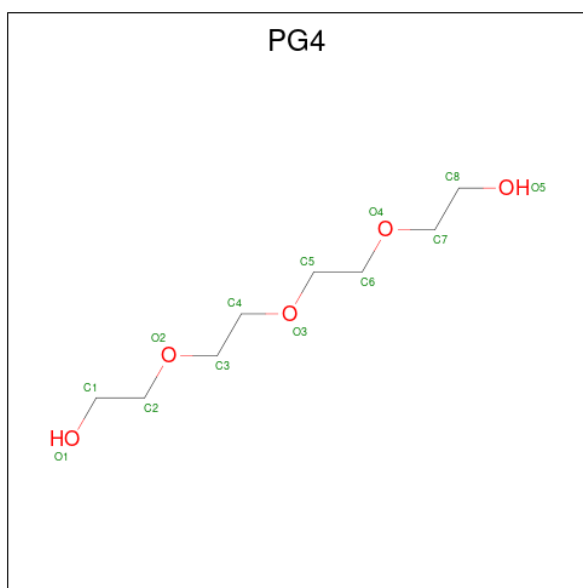
Mol	Chain	Residues	Atoms						ZeroOcc	AltConf		
			Total	C	H	N	O	P			S	
2	A	1	Total	121	35	58	7	17	3	1	0	0
2	B	1	Total	121	35	58	7	17	3	1	0	0

- Molecule 3 is (2M)-2-[2-(piperazin-1-yl)phenyl]-N-(1,3-thiazol-2-yl)-1H-benzimidazole-4-carboxamide (CCD ID: XOL) (formula:  $C_{21}H_{20}N_6OS$ ) (labeled as "Ligand of Interest" by depositor).



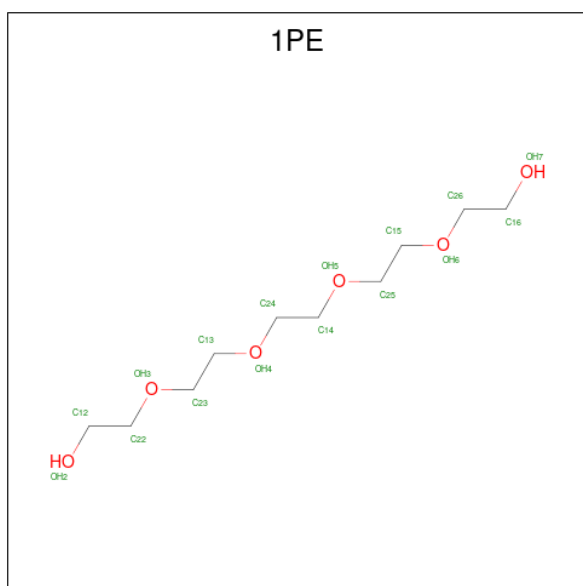
Mol	Chain	Residues	Atoms					ZeroOcc	AltConf		
			Total	C	H	N	O			S	
3	A	1	Total	50	21	21	6	1	1	0	0

- Molecule 4 is TETRAETHYLENE GLYCOL (CCD ID: PG4) (formula:  $C_8H_{18}O_5$ ).



Mol	Chain	Residues	Atoms			ZeroOcc	AltConf	
4	A	1	Total	C	H	O	0	0
			31	8	18	5		
4	B	1	Total	C	H	O	0	1
			31	8	18	5		

- Molecule 5 is PENTAETHYLENE GLYCOL (CCD ID: 1PE) (formula:  $C_{10}H_{22}O_6$ ).



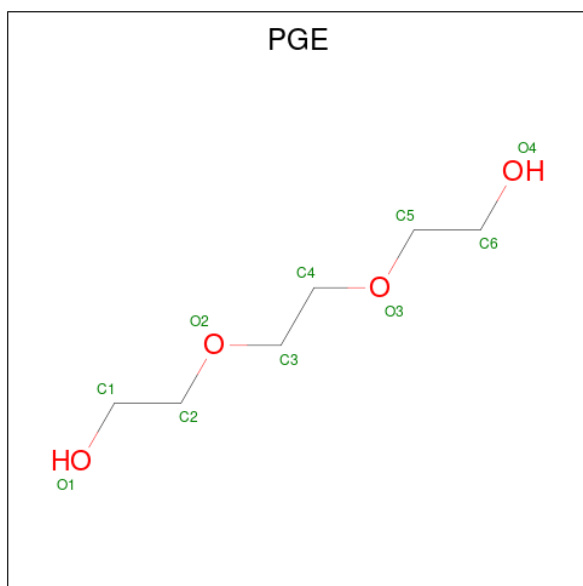
Mol	Chain	Residues	Atoms			ZeroOcc	AltConf	
5	A	1	Total	C	H	O	0	0
			38	10	22	6		

*Continued on next page...*

Continued from previous page...

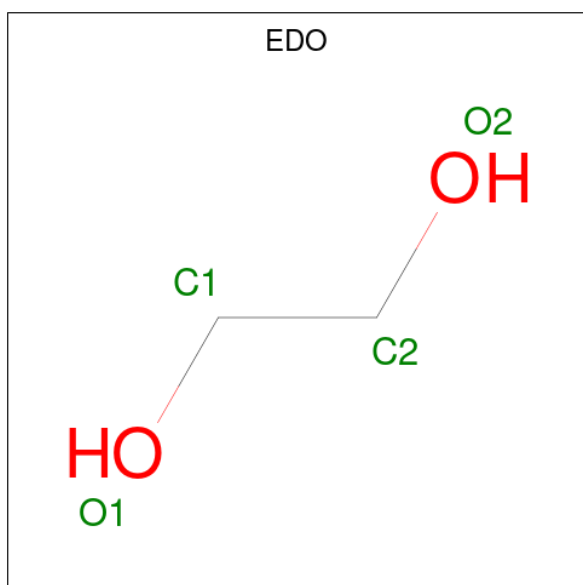
Mol	Chain	Residues	Atoms				ZeroOcc	AltConf
			Total	C	H	O		
5	B	1	38	10	22	6	0	0

- Molecule 6 is TRIETHYLENE GLYCOL (CCD ID: PGE) (formula:  $C_6H_{14}O_4$ ).



Mol	Chain	Residues	Atoms				ZeroOcc	AltConf
			Total	C	H	O		
6	A	1	24	6	14	4	0	0

- Molecule 7 is 1,2-ETHANEDIOL (CCD ID: EDO) (formula:  $C_2H_6O_2$ ).



Mol	Chain	Residues	Atoms				ZeroOcc	AltConf
7	A	1	Total	C	H	O	0	1
			10	2	6	2		
7	B	1	Total	C	H	O	0	0
			10	2	6	2		

- Molecule 8 is CHLORIDE ION (CCD ID: CL) (formula: Cl).

Mol	Chain	Residues	Atoms		ZeroOcc	AltConf
8	B	1	Total	Cl	0	0
			1	1		

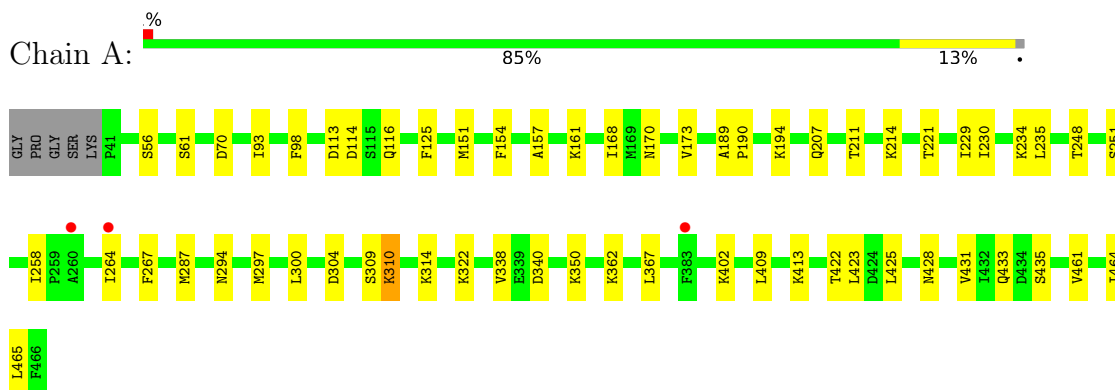
- Molecule 9 is water.

Mol	Chain	Residues	Atoms		ZeroOcc	AltConf
9	A	303	Total	O	0	24
			303	303		
9	B	274	Total	O	0	8
			274	274		

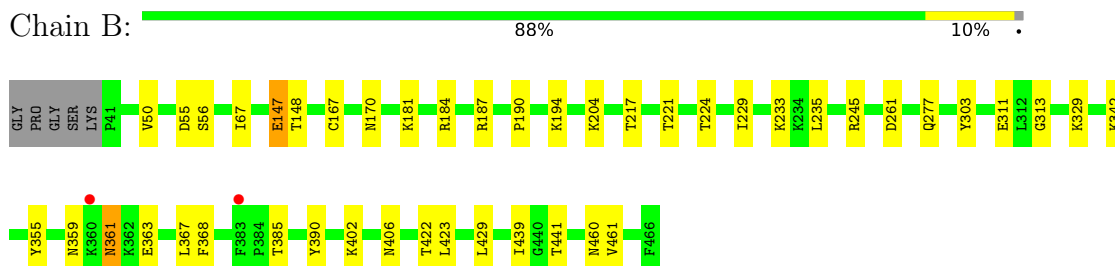
### 3 Residue-property plots [i](#)

These plots are drawn for all protein, RNA, DNA and oligosaccharide chains in the entry. The first graphic for a chain summarises the proportions of the various outlier classes displayed in the second graphic. The second graphic shows the sequence view annotated by issues in geometry and electron density. Residues are color-coded according to the number of geometric quality criteria for which they contain at least one outlier: green = 0, yellow = 1, orange = 2 and red = 3 or more. A red dot above a residue indicates a poor fit to the electron density ( $RSRZ > 2$ ). Stretches of 2 or more consecutive residues without any outlier are shown as a green connector. Residues present in the sample, but not in the model, are shown in grey.

- Molecule 1: Glycylpeptide N-tetradecanoyltransferase



- Molecule 1: Glycylpeptide N-tetradecanoyltransferase



## 4 Data and refinement statistics

Property	Value	Source
Space group	P 1 21 1	Depositor
Cell constants a, b, c, $\alpha$ , $\beta$ , $\gamma$	53.78Å 88.23Å 98.06Å 90.00° 97.83° 90.00°	Depositor
Resolution (Å)	35.37 – 2.00 35.37 – 2.00	Depositor EDS
% Data completeness (in resolution range)	95.4 (35.37-2.00) 96.9 (35.37-2.00)	Depositor EDS
$R_{merge}$	(Not available)	Depositor
$R_{sym}$	(Not available)	Depositor
$\langle I/\sigma(I) \rangle$ <sup>1</sup>	2.37 (at 1.98Å)	Xtrriage
Refinement program	PHENIX 1.20.1.4487	Depositor
R, $R_{free}$	0.155 , 0.207 0.155 , 0.206	Depositor DCC
$R_{free}$ test set	2926 reflections (4.67%)	wwPDB-VP
Wilson B-factor (Å <sup>2</sup> )	26.1	Xtrriage
Anisotropy	0.381	Xtrriage
Bulk solvent $k_{sol}$ (e/Å <sup>3</sup> ), $B_{sol}$ (Å <sup>2</sup> )	0.41 , 53.9	EDS
L-test for twinning <sup>2</sup>	$\langle  L  \rangle = 0.50$ , $\langle L^2 \rangle = 0.33$	Xtrriage
Estimated twinning fraction	No twinning to report.	Xtrriage
$F_o, F_c$ correlation	0.97	EDS
Total number of atoms	15601	wwPDB-VP
Average B, all atoms (Å <sup>2</sup> )	37.0	wwPDB-VP

Xtrriage's analysis on translational NCS is as follows: *The largest off-origin peak in the Patterson function is 4.86% of the height of the origin peak. No significant pseudotranslation is detected.*

<sup>1</sup>Intensities estimated from amplitudes.

<sup>2</sup>Theoretical values of  $\langle |L| \rangle$ ,  $\langle L^2 \rangle$  for acentric reflections are 0.5, 0.333 respectively for untwinned datasets, and 0.375, 0.2 for perfectly twinned datasets.

## 5 Model quality [i](#)

### 5.1 Standard geometry [i](#)

Bond lengths and bond angles in the following residue types are not validated in this section: EDO, PGE, XOL, PG4, 1PE, CL, MYA

The Z score for a bond length (or angle) is the number of standard deviations the observed value is removed from the expected value. A bond length (or angle) with  $|Z| > 5$  is considered an outlier worth inspection. RMSZ is the root-mean-square of all Z scores of the bond lengths (or angles).

Mol	Chain	Bond lengths		Bond angles	
		RMSZ	# Z  >5	RMSZ	# Z  >5
1	A	0.53	0/3780	0.60	0/5109
1	B	0.53	0/3703	0.62	0/5008
All	All	0.53	0/7483	0.61	0/10117

There are no bond length outliers.

There are no bond angle outliers.

There are no chirality outliers.

There are no planarity outliers.

### 5.2 Too-close contacts [i](#)

In the following table, the Non-H and H(model) columns list the number of non-hydrogen atoms and hydrogen atoms in the chain respectively. The H(added) column lists the number of hydrogen atoms added and optimized by MolProbity. The Clashes column lists the number of clashes within the asymmetric unit, whereas Symm-Clashes lists symmetry-related clashes.

Mol	Chain	Non-H	H(model)	H(added)	Clashes	Symm-Clashes
1	A	3695	3666	3642	36	0
1	B	3618	3570	3553	28	0
2	A	63	58	57	0	0
2	B	63	58	57	0	0
3	A	29	21	0	0	0
4	A	13	18	18	1	0
4	B	13	18	18	0	0
5	A	16	22	22	0	0
5	B	16	22	22	1	0
6	A	10	14	14	0	0
7	A	4	6	6	0	0

*Continued on next page...*

Continued from previous page...

Mol	Chain	Non-H	H(model)	H(added)	Clashes	Symm-Clashes
7	B	4	6	6	0	0
8	B	1	0	0	0	0
9	A	303	0	0	8	0
9	B	274	0	0	8	0
All	All	8122	7479	7415	65	0

The all-atom clashscore is defined as the number of clashes found per 1000 atoms (including hydrogen atoms). The all-atom clashscore for this structure is 4.

The worst 5 of 65 close contacts within the same asymmetric unit are listed below, sorted by their clash magnitude.

Atom-1	Atom-2	Interatomic distance (Å)	Clash overlap (Å)
1:B:245:ARG:O	9:B:601:HOH:O	2.07	0.72
1:B:55:ASP:CB	9:B:822:HOH:O	2.38	0.70
1:A:168[A]:ILE:HG23	1:A:300:LEU:HD13	1.76	0.66
1:A:70:ASP:HA	9:A:623:HOH:O	1.97	0.64
1:A:338:VAL:HG23	9:A:809:HOH:O	2.01	0.59

There are no symmetry-related clashes.

## 5.3 Torsion angles [i](#)

### 5.3.1 Protein backbone [i](#)

In the following table, the Percentiles column shows the percent Ramachandran outliers of the chain as a percentile score with respect to all X-ray entries followed by that with respect to entries of similar resolution.

The Analysed column shows the number of residues for which the backbone conformation was analysed, and the total number of residues.

Mol	Chain	Analysed	Favoured	Allowed	Outliers	Percentiles	
1	A	446/431 (104%)	428 (96%)	18 (4%)	0	100	100
1	B	439/431 (102%)	423 (96%)	15 (3%)	1 (0%)	43	42
All	All	885/862 (103%)	851 (96%)	33 (4%)	1 (0%)	48	46

All (1) Ramachandran outliers are listed below:

Mol	Chain	Res	Type
1	B	56	SER

### 5.3.2 Protein sidechains [i](#)

In the following table, the Percentiles column shows the percent sidechain outliers of the chain as a percentile score with respect to all X-ray entries followed by that with respect to entries of similar resolution.

The Analysed column shows the number of residues for which the sidechain conformation was analysed, and the total number of residues.

Mol	Chain	Analysed	Rotameric	Outliers	Percentiles	
1	A	416/404 (103%)	404 (97%)	12 (3%)	37	40
1	B	405/404 (100%)	397 (98%)	8 (2%)	48	54
All	All	821/808 (102%)	801 (98%)	20 (2%)	45	47

5 of 20 residues with a non-rotameric sidechain are listed below:

Mol	Chain	Res	Type
1	B	233	LYS
1	B	342	LYS
1	B	385	THR
1	B	361	ASN
1	A	309	SER

Sometimes sidechains can be flipped to improve hydrogen bonding and reduce clashes. 5 of 7 such sidechains are listed below:

Mol	Chain	Res	Type
1	B	120	ASN
1	B	215	ASN
1	B	387	ASN
1	B	246	ASN
1	B	53	ASN

### 5.3.3 RNA [i](#)

There are no RNA molecules in this entry.

## 5.4 Non-standard residues in protein, DNA, RNA chains [i](#)

There are no non-standard protein/DNA/RNA residues in this entry.

## 5.5 Carbohydrates [i](#)

There are no oligosaccharides in this entry.

## 5.6 Ligand geometry [i](#)

Of 11 ligands modelled in this entry, 1 is monoatomic - leaving 10 for Mogul analysis.

In the following table, the Counts columns list the number of bonds (or angles) for which Mogul statistics could be retrieved, the number of bonds (or angles) that are observed in the model and the number of bonds (or angles) that are defined in the Chemical Component Dictionary. The Link column lists molecule types, if any, to which the group is linked. The Z score for a bond length (or angle) is the number of standard deviations the observed value is removed from the expected value. A bond length (or angle) with  $|Z| > 2$  is considered an outlier worth inspection. RMSZ is the root-mean-square of all Z scores of the bond lengths (or angles).

Mol	Type	Chain	Res	Link	Bond lengths			Bond angles		
					Counts	RMSZ	# Z  > 2	Counts	RMSZ	# Z  > 2
7	EDO	B	502	-	3,3,3	0.36	0	2,2,2	0.35	0
2	MYA	B	501	-	63,65,65	2.63	16 (25%)	85,91,91	1.54	14 (16%)
6	PGE	A	505	-	9,9,9	0.36	0	8,8,8	0.33	0
4	PG4	B	504[B]	-	12,12,12	0.19	0	11,11,11	0.53	0
3	XOL	A	502	-	33,33,33	2.36	10 (30%)	45,46,46	1.60	7 (15%)
2	MYA	A	501	-	63,65,65	2.59	14 (22%)	85,91,91	1.79	19 (22%)
5	1PE	B	503	-	15,15,15	0.27	0	14,14,14	0.44	0
5	1PE	A	504	-	15,15,15	0.17	0	14,14,14	0.25	0
4	PG4	A	503	-	12,12,12	0.23	0	11,11,11	0.37	0
7	EDO	A	506[A]	-	3,3,3	0.45	0	2,2,2	0.41	0

In the following table, the Chirals column lists the number of chiral outliers, the number of chiral centers analysed, the number of these observed in the model and the number defined in the Chemical Component Dictionary. Similar counts are reported in the Torsion and Rings columns. '-' means no outliers of that kind were identified.

Mol	Type	Chain	Res	Link	Chirals	Torsions	Rings
7	EDO	B	502	-	-	0/1/1/1	-
2	MYA	B	501	-	-	1/64/80/80	0/3/3/3
6	PGE	A	505	-	-	4/7/7/7	-
4	PG4	B	504[B]	-	-	1/10/10/10	-

*Continued on next page...*

*Continued from previous page...*

Mol	Type	Chain	Res	Link	Chirals	Torsions	Rings
3	XOL	A	502	-	-	2/16/24/24	0/5/5/5
2	MYA	A	501	-	-	4/64/80/80	0/3/3/3
5	1PE	B	503	-	-	5/13/13/13	-
5	1PE	A	504	-	-	7/13/13/13	-
4	PG4	A	503	-	-	3/10/10/10	-
7	EDO	A	506[A]	-	-	0/1/1/1	-

The worst 5 of 40 bond length outliers are listed below:

Mol	Chain	Res	Type	Atoms	Z	Observed(Å)	Ideal(Å)
2	A	501	MYA	C2X-C3X	-12.13	1.26	1.53
2	B	501	MYA	C2X-C3X	-11.96	1.26	1.53
3	A	502	XOL	C24-S28	-7.32	1.64	1.74
2	B	501	MYA	O4X-C4X	-6.76	1.30	1.45
2	A	501	MYA	O4X-C4X	-6.35	1.30	1.45

The worst 5 of 40 bond angle outliers are listed below:

Mol	Chain	Res	Type	Atoms	Z	Observed(°)	Ideal(°)
2	A	501	MYA	C5A-C4A-N3A	-6.41	117.89	126.72
3	A	502	XOL	C27-S28-C24	5.26	96.09	90.07
2	B	501	MYA	C5A-C4A-N3A	-5.10	119.69	126.72
3	A	502	XOL	C27-C26-N25	-4.50	109.64	116.12
2	B	501	MYA	C3M-C2M-S1	4.46	118.72	113.40

There are no chirality outliers.

5 of 27 torsion outliers are listed below:

Mol	Chain	Res	Type	Atoms
5	A	504	1PE	OH5-C14-C24-OH4
5	A	504	1PE	OH4-C13-C23-OH3
5	A	504	1PE	OH7-C16-C26-OH6
6	A	505	PGE	O3-C5-C6-O4
5	B	503	1PE	OH4-C13-C23-OH3

There are no ring outliers.

2 monomers are involved in 2 short contacts:

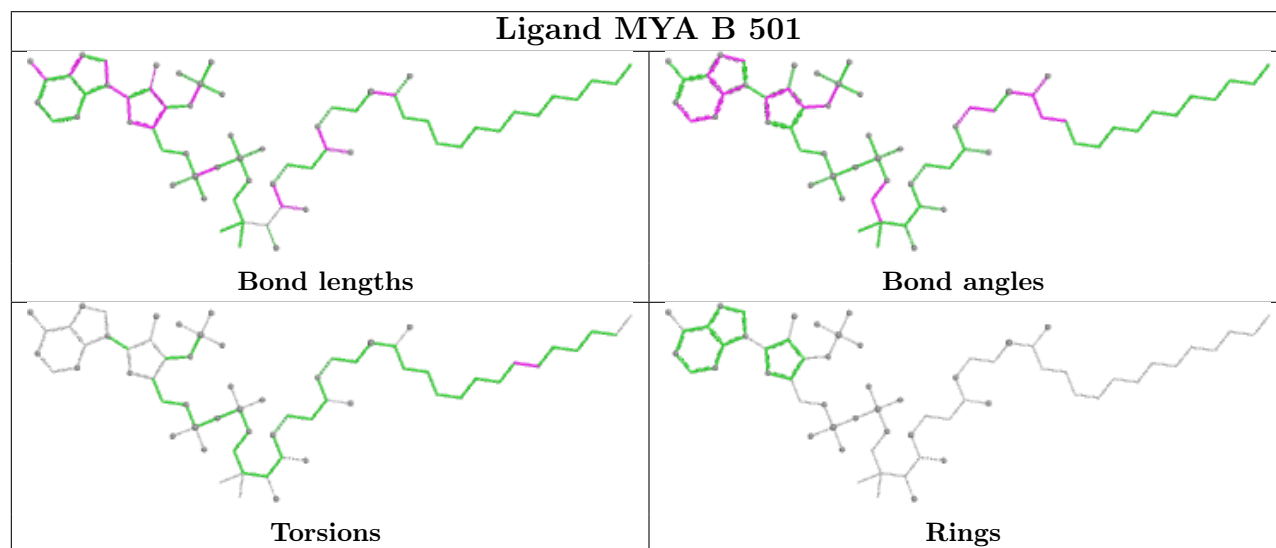
Mol	Chain	Res	Type	Clashes	Symm-Clashes
5	B	503	1PE	1	0

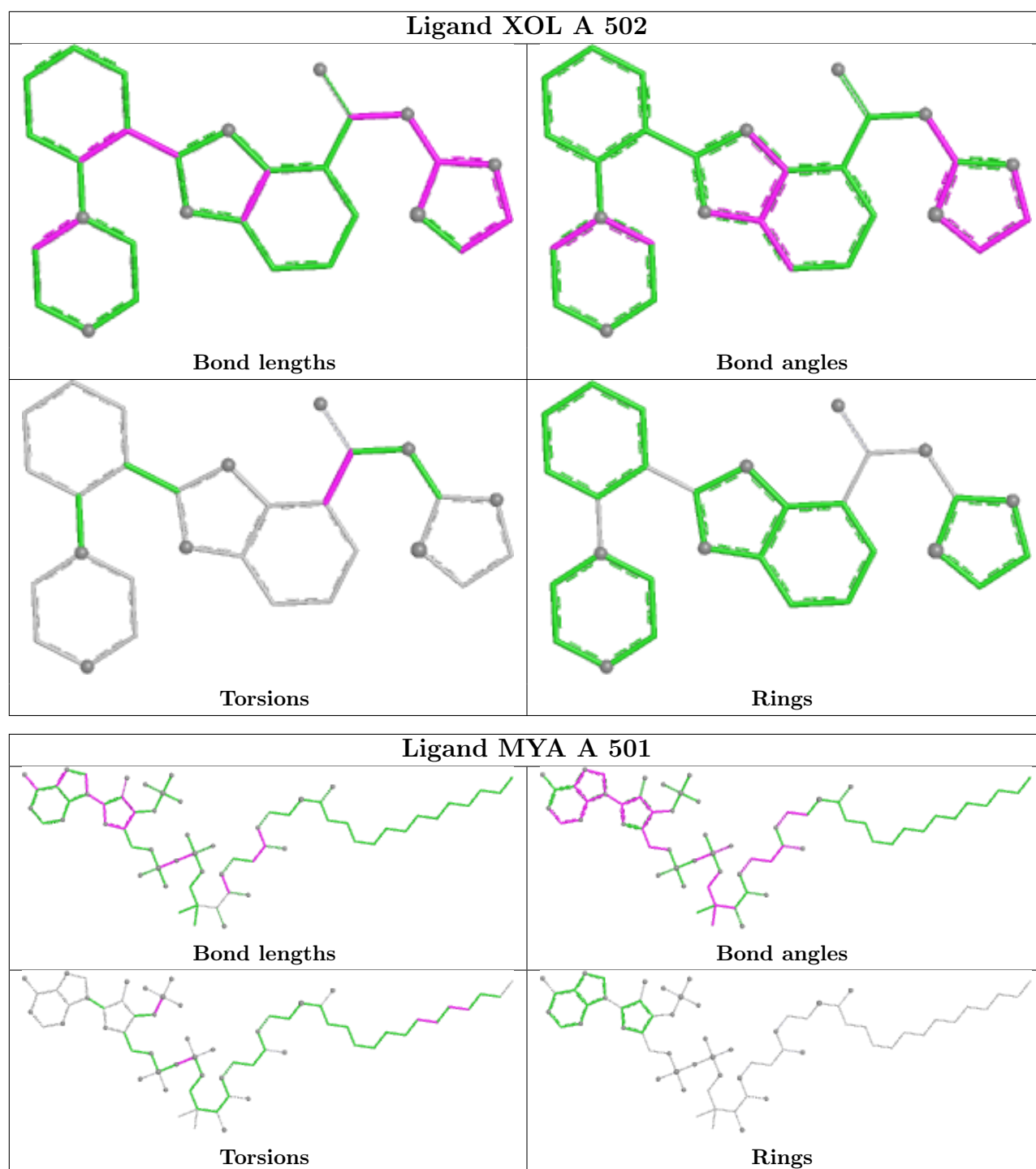
*Continued on next page...*

*Continued from previous page...*

Mol	Chain	Res	Type	Clashes	Symm-Clashes
4	A	503	PG4	1	0

The following is a two-dimensional graphical depiction of Mogul quality analysis of bond lengths, bond angles, torsion angles, and ring geometry for all instances of the Ligand of Interest. In addition, ligands with molecular weight > 250 and outliers as shown on the validation Tables will also be included. For torsion angles, if less than 5% of the Mogul distribution of torsion angles is within 10 degrees of the torsion angle in question, then that torsion angle is considered an outlier. Any bond that is central to one or more torsion angles identified as an outlier by Mogul will be highlighted in the graph. For rings, the root-mean-square deviation (RMSD) between the ring in question and similar rings identified by Mogul is calculated over all ring torsion angles. If the average RMSD is greater than 60 degrees and the minimal RMSD between the ring in question and any Mogul-identified rings is also greater than 60 degrees, then that ring is considered an outlier. The outliers are highlighted in purple. The color gray indicates Mogul did not find sufficient equivalents in the CSD to analyse the geometry.





## 5.7 Other polymers [\(i\)](#)

There are no such residues in this entry.

## 5.8 Polymer linkage issues [\(i\)](#)

There are no chain breaks in this entry.

## 6 Fit of model and data [i](#)

### 6.1 Protein, DNA and RNA chains [i](#)

In the following table, the column labelled ‘#RSRZ> 2’ contains the number (and percentage) of RSRZ outliers, followed by percent RSRZ outliers for the chain as percentile scores relative to all X-ray entries and entries of similar resolution. The OWAB column contains the minimum, median, 95<sup>th</sup> percentile and maximum values of the occupancy-weighted average B-factor per residue. The column labelled ‘Q< 0.9’ lists the number of (and percentage) of residues with an average occupancy less than 0.9.

Mol	Chain	Analysed	<RSRZ>	#RSRZ>2	OWAB(Å <sup>2</sup> )	Q<0.9
1	A	426/431 (98%)	-0.41	3 (0%) 84 84	12, 33, 65, 93	23 (5%)
1	B	426/431 (98%)	-0.46	2 (0%) 87 87	14, 32, 62, 118	16 (3%)
All	All	852/862 (98%)	-0.44	5 (0%) 85 85	12, 33, 65, 118	39 (4%)

All (5) RSRZ outliers are listed below:

Mol	Chain	Res	Type	RSRZ
1	B	360	LYS	2.5
1	A	264[A]	ILE	2.4
1	B	383	PHE	2.4
1	A	383	PHE	2.2
1	A	260	ALA	2.1

### 6.2 Non-standard residues in protein, DNA, RNA chains [i](#)

There are no non-standard protein/DNA/RNA residues in this entry.

### 6.3 Carbohydrates [i](#)

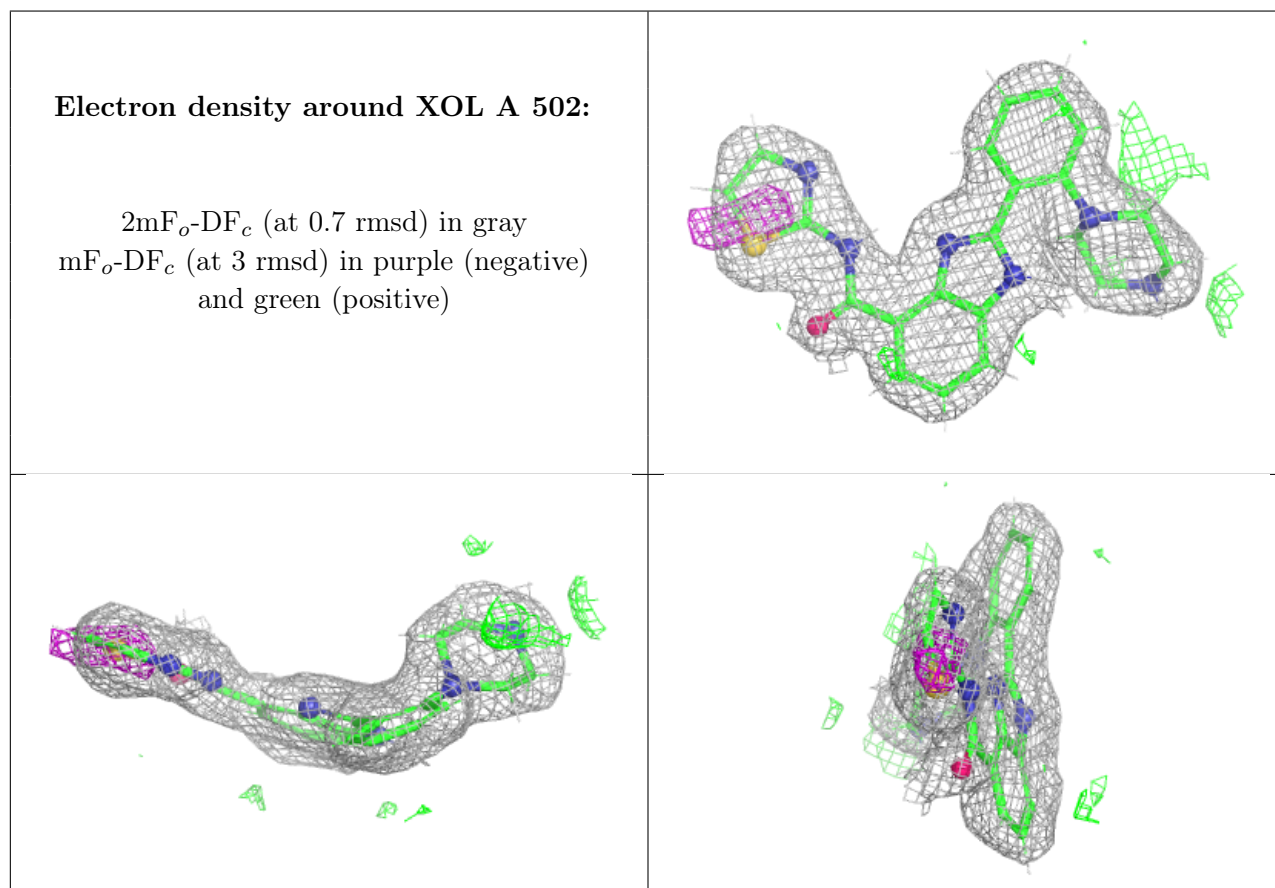
There are no oligosaccharides in this entry.

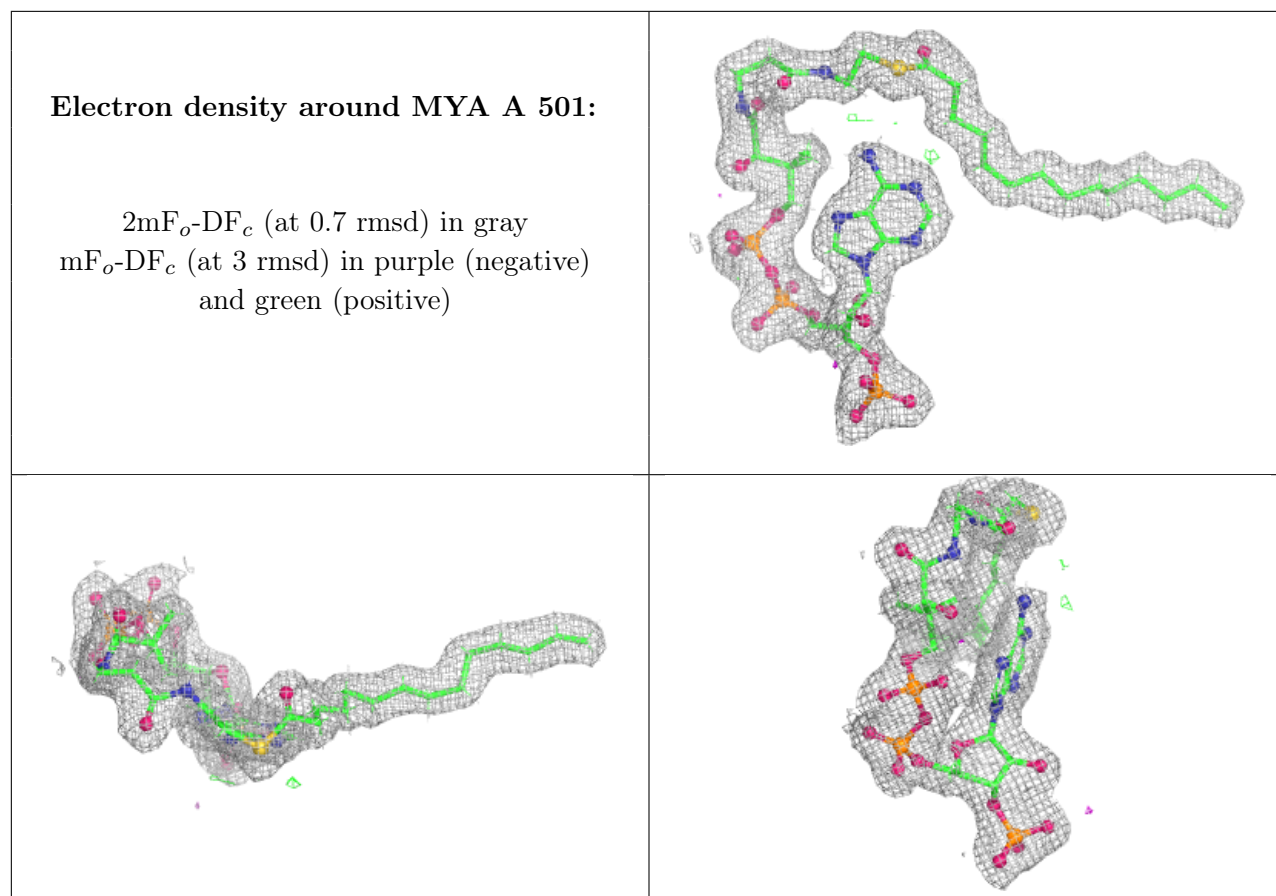
### 6.4 Ligands [i](#)

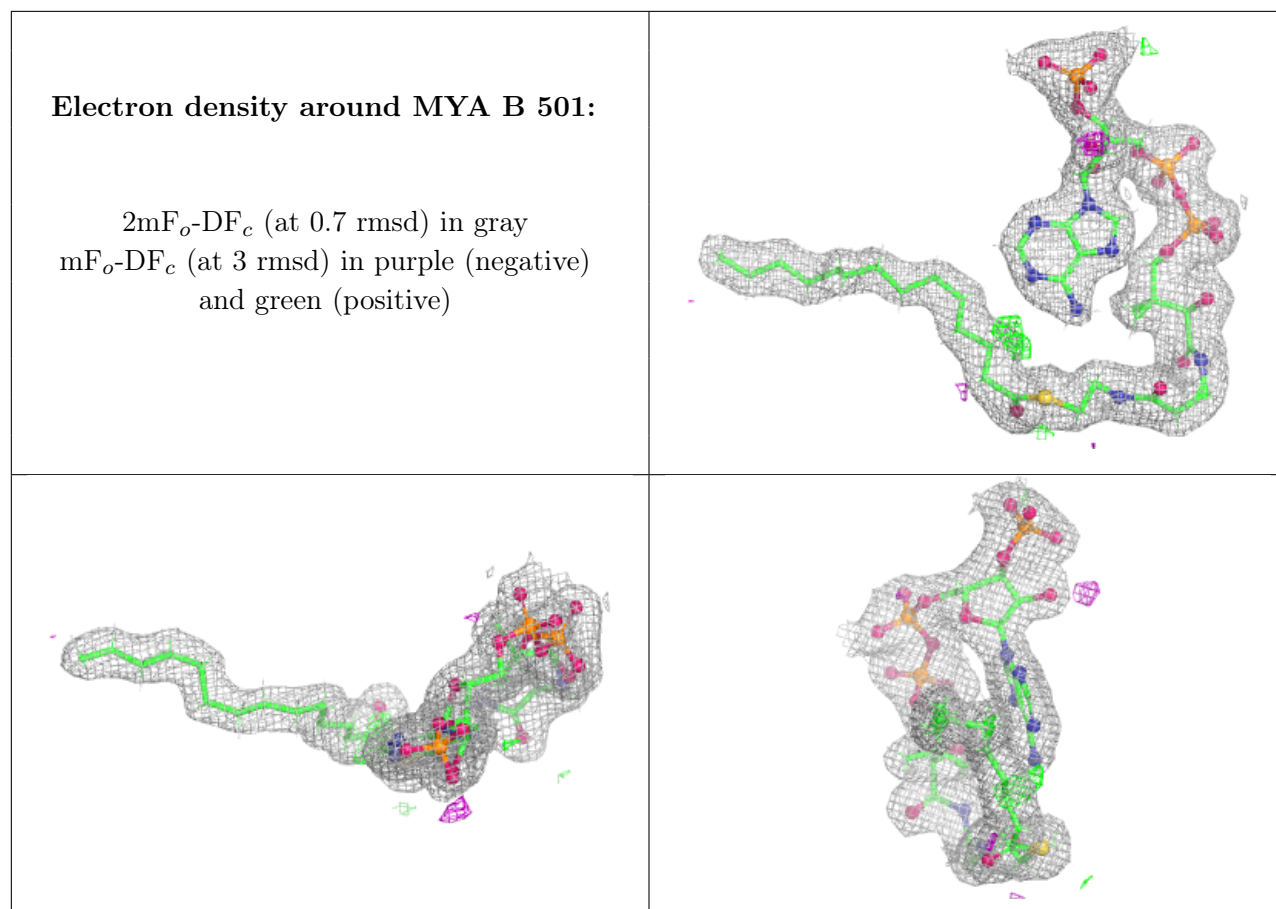
In the following table, the Atoms column lists the number of modelled atoms in the group and the number defined in the chemical component dictionary. The B-factors column lists the minimum, median, 95<sup>th</sup> percentile and maximum values of B factors of atoms in the group. The column labelled ‘Q< 0.9’ lists the number of atoms with occupancy less than 0.9.

Mol	Type	Chain	Res	Atoms	RSCC	RSR	B-factors( $\text{\AA}^2$ )	Q<0.9
5	1PE	B	503	16/16	0.77	0.15	35,52,68,72	0
4	PG4	A	503	13/13	0.80	0.14	46,63,78,81	0
4	PG4	B	504[B]	13/13	0.86	0.12	46,65,81,93	0
6	PGE	A	505	10/10	0.87	0.12	47,62,72,74	0
7	EDO	B	502	4/4	0.88	0.11	33,46,56,57	0
7	EDO	A	506[A]	4/4	0.90	0.15	23,29,41,50	10
5	1PE	A	504	16/16	0.90	0.10	32,52,73,81	0
3	XOL	A	502	29/29	0.96	0.06	24,33,40,42	0
2	MYA	A	501	63/63	0.97	0.05	17,27,38,47	0
2	MYA	B	501	63/63	0.97	0.05	16,26,37,42	0
8	CL	B	505	1/1	0.98	0.14	46,46,46,46	0

The following is a graphical depiction of the model fit to experimental electron density of all instances of the Ligand of Interest. In addition, ligands with molecular weight > 250 and outliers as shown on the geometry validation Tables will also be included. Each fit is shown from different orientation to approximate a three-dimensional view.







## 6.5 Other polymers [i](#)

There are no such residues in this entry.