



# wwPDB X-ray Structure Validation Summary Report ⓘ

Mar 9, 2026 – 10:44 PM UTC

PDB ID : 1FCP / pdb\_00001fcp  
Title : FERRIC HYDROXAMATE UPTAKE RECEPTOR (FHUA) FROM E.COLI  
IN COMPLEX WITH BOUND FERRIC IRON-IRON  
Authors : Hofmann, E.; Ferguson, A.D.; Diederichs, K.; Welte, W.  
Deposited on : 1998-10-14  
Resolution : 2.70 Å (reported)

This is a wwPDB X-ray Structure Validation Summary Report for a publicly released PDB entry.

We welcome your comments at [validation@mail.wwpdb.org](mailto:validation@mail.wwpdb.org)

A user guide is available at

<https://www.wwpdb.org/validation/2017/XrayValidationReportHelp>

with specific help available everywhere you see the ⓘ symbol.

The types of validation reports are described at

<http://www.wwpdb.org/validation/2017/FAQs#types>.

---

The following versions of software and data (see [references ⓘ](#)) were used in the production of this report:

MolProbity : 4-5-2 with Phenix2.0  
Mogul : 2022.3.0, CSD as543be (2022)  
Xtrriage (Phenix) : 2.0  
EDS : 3.0  
Buster-report : wwPDB partial adaption of 1.1.7 (2018)  
Percentile statistics : 20250101.v01 (using entries in the PDB archive January 1st 2025)  
CCP4 : 9.0.010 (Gargrove)  
Density-Fitness : 1.0.12  
Ideal geometry (proteins) : Engh & Huber (2001)  
Ideal geometry (DNA, RNA) : Parkinson et al. (1996)  
Validation Pipeline (wwPDB-VP) : 2.49

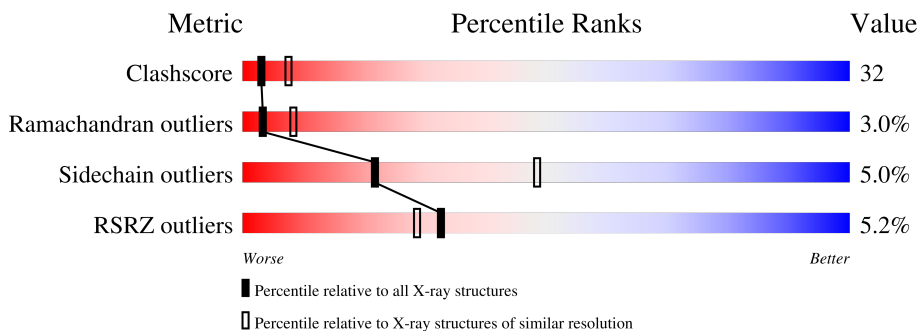
# 1 Overall quality at a glance

The following experimental techniques were used to determine the structure:

*X-RAY DIFFRACTION*

The reported resolution of this entry is 2.70 Å.

Percentile scores (ranging between 0-100) for global validation metrics of the entry are shown in the following graphic. The table shows the number of entries on which the scores are based.



Metric	Whole archive (#Entries)	Similar resolution (#Entries, resolution range(Å))
Clashscore	190562	3843 (2.70-2.70)
Ramachandran outliers	187476	3778 (2.70-2.70)
Sidechain outliers	187428	3778 (2.70-2.70)
RSRZ outliers	180081	3538 (2.70-2.70)

The table below summarises the geometric issues observed across the polymeric chains and their fit to the electron density. The red, orange, yellow and green segments of the lower bar indicate the fraction of residues that contain outliers for  $\geq 3$ , 2, 1 and 0 types of geometric quality criteria respectively. A grey segment represents the fraction of residues that are not modelled. The numeric value for each fraction is indicated below the corresponding segment, with a dot representing fractions  $\leq 5\%$ . The upper red bar (where present) indicates the fraction of residues that have poor fit to the electron density. The numeric value is given above the bar.

Mol	Chain	Length	Quality of chain
1	A	705	
2	B	9	

The following table lists non-polymeric compounds, carbohydrate monomers and non-standard residues in protein, DNA, RNA chains that are outliers for geometric or electron-density-fit criteria:

Mol	Type	Chain	Res	Chirality	Geometry	Clashes	Electron density
4	LIL	A	904	X	-	-	-
8	FCI	A	750	X	-	-	-

## 2 Entry composition i

There are 9 unique types of molecules in this entry. The entry contains 5832 atoms, of which 0 are hydrogens and 0 are deuteriums.

In the tables below, the ZeroOcc column contains the number of atoms modelled with zero occupancy, the AltConf column contains the number of residues with at least one atom in alternate conformation and the Trace column contains the number of residues modelled with at most 2 atoms.

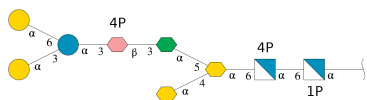
- Molecule 1 is a protein called PROTEIN (FERRIC HYDROXAMATE UPTAKE RECEPTOR).

Mol	Chain	Residues	Atoms					ZeroOcc	AltConf	Trace	
			Total	C	N	O	S				Se
1	A	705	5512	3469	942	1087	4	10	0	0	0

There are 9 discrepancies between the modelled and reference sequences:

Chain	Residue	Modelled	Actual	Comment	Reference
A	406	SER	-	insertion	UNP P06971
A	407	HIS	-	insertion	UNP P06971
A	408	HIS	-	insertion	UNP P06971
A	409	HIS	-	insertion	UNP P06971
A	410	HIS	-	insertion	UNP P06971
A	411	HIS	-	insertion	UNP P06971
A	412	HIS	-	insertion	UNP P06971
A	413	GLY	-	insertion	UNP P06971
A	414	SER	-	insertion	UNP P06971

- Molecule 2 is an oligosaccharide called alpha-D-galactopyranose-(1-3)-[alpha-D-galactopyranose-(1-6)]alpha-D-glucopyranose-(1-3)-4-O-phosphono-D-glycero-beta-D-manno-heptopyranose-(1-3)-L-glycero-alpha-D-manno-heptopyranose-(1-5)-[3-deoxy-alpha-D-manno-oct-2-ulopyranosonic acid-(2-4)]3-deoxy-alpha-D-manno-oct-2-ulopyranosonic acid-(2-6)-2-amino-2-deoxy-4-O-phosphono-alpha-D-glucopyranose-(1-6)-2-amino-2-deoxy-1-O-phosphono-alpha-D-glucopyranose.

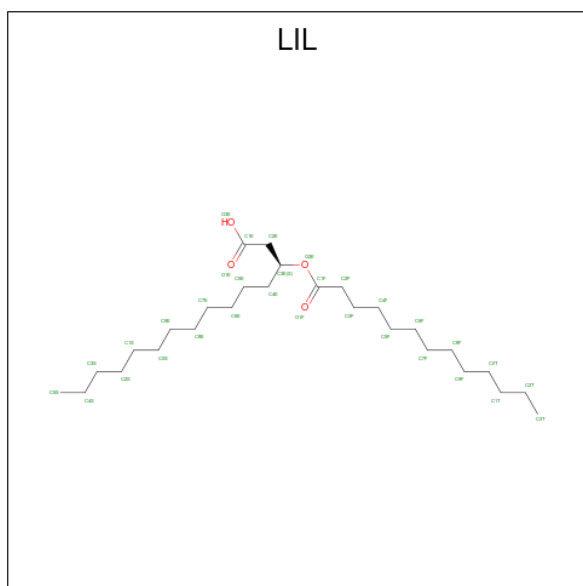


Mol	Chain	Residues	Atoms				ZeroOcc	AltConf	Trace	
			Total	C	N	O				P
2	B	9	124	60	2	59	3	0	0	0

- Molecule 3 is NICKEL (II) ION (CCD ID: NI) (formula: Ni).

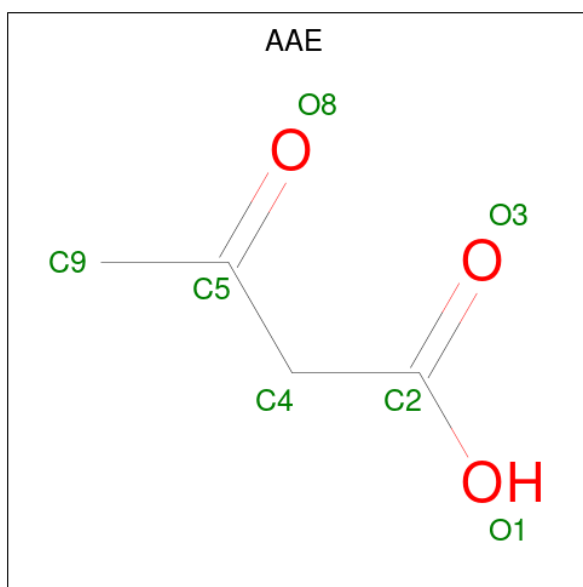
Mol	Chain	Residues	Atoms	ZeroOcc	AltConf
3	A	2	Total Ni 2 2	0	0

- Molecule 4 is 2-TRIDECANOYLOXY-PENTADECANOIC ACID (CCD ID: LIL) (formula: C<sub>28</sub>H<sub>54</sub>O<sub>4</sub>).



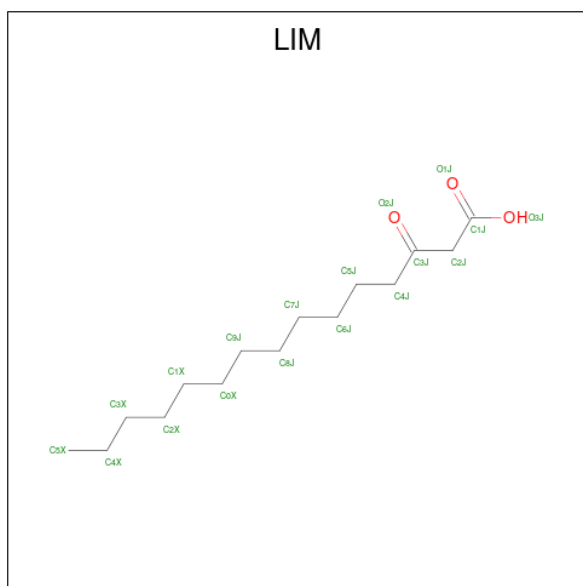
Mol	Chain	Residues	Atoms	ZeroOcc	AltConf
4	A	1	Total C O 31 28 3	0	0
4	A	1	Total C O 31 28 3	0	0

- Molecule 5 is ACETOACETIC ACID (CCD ID: AAE) (formula: C<sub>4</sub>H<sub>6</sub>O<sub>3</sub>).



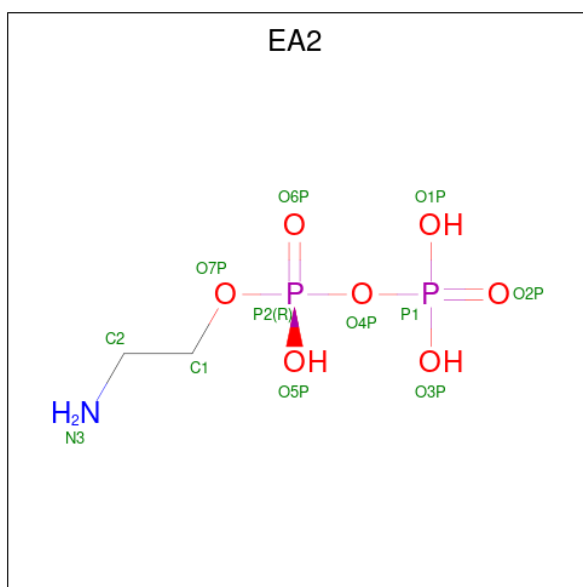
Mol	Chain	Residues	Atoms		ZeroOcc	AltConf
5	A	1	Total	C O	0	0
			6	4 2		

- Molecule 6 is 3-OXO-PENTADECANOIC ACID (CCD ID: LIM) (formula:  $C_{15}H_{28}O_3$ ).



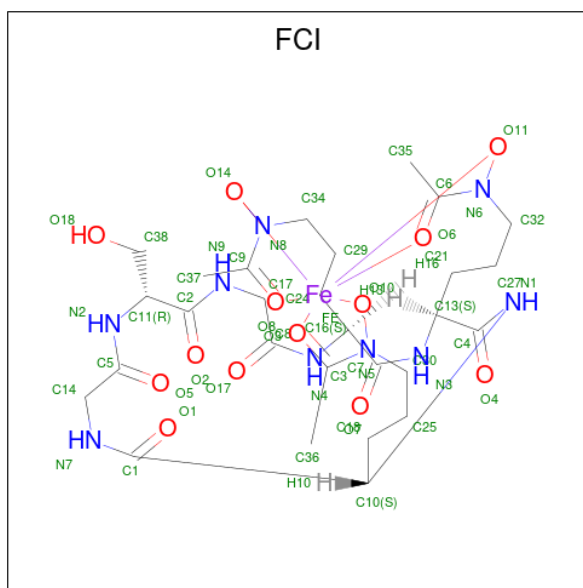
Mol	Chain	Residues	Atoms		ZeroOcc	AltConf
6	A	1	Total	C O	0	0
			17	15 2		

- Molecule 7 is AMINOETHANOLPYROPHOSPHATE (CCD ID: EA2) (formula:  $C_2H_9NO_7P_2$ ).



Mol	Chain	Residues	Atoms					ZeroOcc	AltConf
			Total	C	N	O	P		
7	A	1	11	2	1	6	2	0	0

- Molecule 8 is FERRICROCIN-IRON (CCD ID: FCI) (formula:  $C_{28}H_{44}FeN_9O_{13}$ ).



Mol	Chain	Residues	Atoms				ZeroOcc	AltConf	
			Total	C	Fe	N			O
8	A	1	46	24	1	9	12	0	0

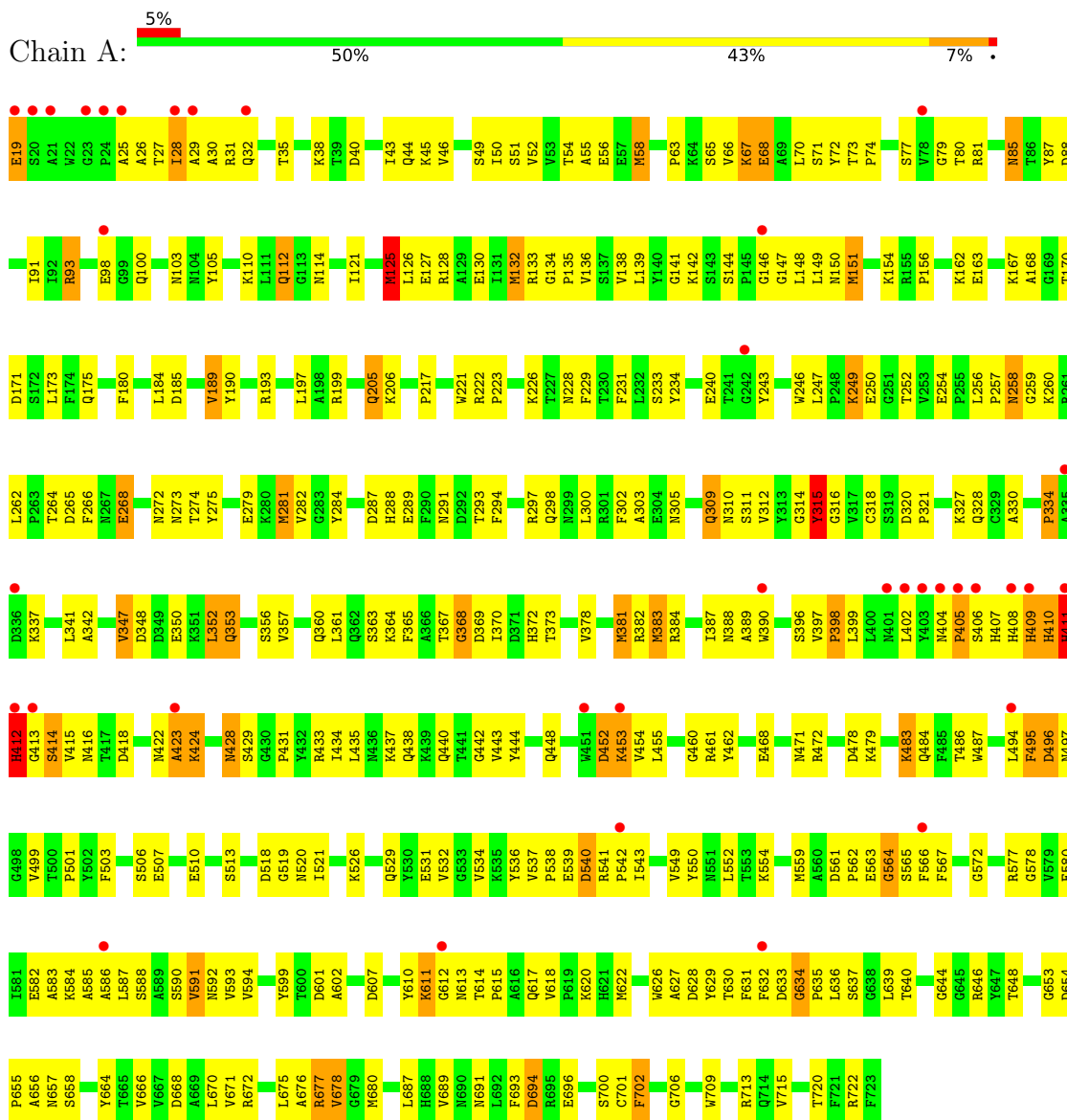
- Molecule 9 is water.

<b>Mol</b>	<b>Chain</b>	<b>Residues</b>	<b>Atoms</b>		<b>ZeroOcc</b>	<b>AltConf</b>
9	A	52	Total 52	O 52	0	0

### 3 Residue-property plots

These plots are drawn for all protein, RNA, DNA and oligosaccharide chains in the entry. The first graphic for a chain summarises the proportions of the various outlier classes displayed in the second graphic. The second graphic shows the sequence view annotated by issues in geometry and electron density. Residues are color-coded according to the number of geometric quality criteria for which they contain at least one outlier: green = 0, yellow = 1, orange = 2 and red = 3 or more. A red dot above a residue indicates a poor fit to the electron density ( $RSRZ > 2$ ). Stretches of 2 or more consecutive residues without any outlier are shown as a green connector. Residues present in the sample, but not in the model, are shown in grey.

- Molecule 1: PROTEIN (FERRIC HYDROXAMATE UPTAKE RECEPTOR)



- Molecule 2: alpha-D-galactopyranose-(1-3)-[alpha-D-galactopyranose-(1-6)]alpha-D-glucopyranose-(1-3)-4-O-phosphono-D-glycero-beta-D-manno-heptopyranose-(1-3)-L-glycero-alpha-D-manno-heptopyranose-(1-5)-[3-deoxy-alpha-D-manno-oct-2-ulopyranosonic acid-(2-4)]3-deoxy-alpha-D-

manno-oct-2-ulopyranosonic acid-(2-6)-2-amino-2-deoxy-4-O-phosphono-alpha-D-glucopyranose-(1-6)-2-amino-2-deoxy-1-O-phosphono-alpha-D-glucopyranose

Chain B:



GP11
GP42
KDD3
GMH4
GPH5
GLC6
GLA7
GLA8
KDD9

## 4 Data and refinement statistics i

Property	Value	Source
Space group	P 61	Depositor
Cell constants a, b, c, $\alpha$ , $\beta$ , $\gamma$	171.40Å 171.40Å 85.70Å 90.00° 90.00° 120.00°	Depositor
Resolution (Å)	40.00 – 2.70 40.00 – 2.70	Depositor EDS
% Data completeness (in resolution range)	98.3 (40.00-2.70) 98.3 (40.00-2.70)	Depositor EDS
$R_{merge}$	(Not available)	Depositor
$R_{sym}$	0.06	Depositor
$\langle I/\sigma(I) \rangle$ <sup>1</sup>	1.96 (at 2.69Å)	Xtrriage
Refinement program	CNS 0.4	Depositor
R, $R_{free}$	0.232 , 0.281 0.229 , (Not available)	Depositor DCC
$R_{free}$ test set	No test flags present.	wwPDB-VP
Wilson B-factor (Å <sup>2</sup> )	59.8	Xtrriage
Anisotropy	0.630	Xtrriage
Bulk solvent $k_{sol}$ (e/Å <sup>3</sup> ), $B_{sol}$ (Å <sup>2</sup> )	0.27 , 46.0	EDS
L-test for twinning <sup>2</sup>	$\langle  L  \rangle = 0.49$ , $\langle L^2 \rangle = 0.32$	Xtrriage
Estimated twinning fraction	0.033 for h,-h-k,-l	Xtrriage
$F_o, F_c$ correlation	0.93	EDS
Total number of atoms	5832	wwPDB-VP
Average B, all atoms (Å <sup>2</sup> )	64.0	wwPDB-VP

Xtrriage's analysis on translational NCS is as follows: *The largest off-origin peak in the Patterson function is 2.81% of the height of the origin peak. No significant pseudotranslation is detected.*

<sup>1</sup>Intensities estimated from amplitudes.

<sup>2</sup>Theoretical values of  $\langle |L| \rangle$ ,  $\langle L^2 \rangle$  for acentric reflections are 0.5, 0.333 respectively for untwinned datasets, and 0.375, 0.2 for perfectly twinned datasets.

## 5 Model quality [i](#)

### 5.1 Standard geometry [i](#)

Bond lengths and bond angles in the following residue types are not validated in this section: LIL, GP4, LIM, KDO, EA2, GLC, FCI, GMH, GP1, AAE, GLA, GPH, NI

The Z score for a bond length (or angle) is the number of standard deviations the observed value is removed from the expected value. A bond length (or angle) with  $|Z| > 5$  is considered an outlier worth inspection. RMSZ is the root-mean-square of all Z scores of the bond lengths (or angles).

Mol	Chain	Bond lengths		Bond angles	
		RMSZ	# Z  >5	RMSZ	# Z  >5
1	A	0.57	11/5642 (0.2%)	1.03	30/7650 (0.4%)

Chiral center outliers are detected by calculating the chiral volume of a chiral center and verifying if the center is modelled as a planar moiety or with the opposite hand. A planarity outlier is detected by checking planarity of atoms in a peptide group, atoms in a mainchain group or atoms of a sidechain that are expected to be planar.

Mol	Chain	#Chirality outliers	#Planarity outliers
1	A	0	2

The worst 5 of 11 bond length outliers are listed below:

Mol	Chain	Res	Type	Atoms	Z	Observed(Å)	Ideal(Å)
1	A	281	MSE	SE-CE	-7.76	1.72	1.95
1	A	125	MSE	SE-CE	-7.08	1.74	1.95
1	A	132	MSE	SE-CE	-6.84	1.75	1.95
1	A	125	MSE	CG-SE	-6.49	1.75	1.95
1	A	151	MSE	SE-CE	-6.42	1.76	1.95

The worst 5 of 30 bond angle outliers are listed below:

Mol	Chain	Res	Type	Atoms	Z	Observed(°)	Ideal(°)
1	A	412	HIS	N-CA-C	19.41	152.14	110.80
1	A	409	HIS	N-CA-C	-14.29	92.10	110.53
1	A	315	TYR	N-CA-C	-13.78	97.48	108.78
1	A	411	HIS	N-CA-C	-12.54	92.82	113.50
1	A	315	TYR	CA-C-N	-9.22	111.69	122.85

There are no chirality outliers.

All (2) planarity outliers are listed below:

Mol	Chain	Res	Type	Group
1	A	315	TYR	Sidechain
1	A	412	HIS	Mainchain

## 5.2 Too-close contacts [i](#)

In the following table, the Non-H and H(model) columns list the number of non-hydrogen atoms and hydrogen atoms in the chain respectively. The H(added) column lists the number of hydrogen atoms added and optimized by MolProbity. The Clashes column lists the number of clashes within the asymmetric unit, whereas Symm-Clashes lists symmetry-related clashes.

Mol	Chain	Non-H	H(model)	H(added)	Clashes	Symm-Clashes
1	A	5512	0	5213	340	0
2	B	124	0	70	4	0
3	A	2	0	0	0	0
4	A	62	0	106	16	0
5	A	6	0	5	0	0
6	A	17	0	27	6	0
7	A	11	0	6	0	0
8	A	46	0	31	2	0
9	A	52	0	0	6	0
All	All	5832	0	5458	354	0

The all-atom clashscore is defined as the number of clashes found per 1000 atoms (including hydrogen atoms). The all-atom clashscore for this structure is 32.

The worst 5 of 354 close contacts within the same asymmetric unit are listed below, sorted by their clash magnitude.

Atom-1	Atom-2	Interatomic distance (Å)	Clash overlap (Å)
1:A:410:HIS:HA	1:A:412:HIS:ND1	1.69	1.06
1:A:121:ILE:HB	1:A:151:MSE:HE1	1.40	1.01
1:A:28:ILE:HD12	1:A:28:ILE:H	1.24	1.00
1:A:410:HIS:H	1:A:412:HIS:HB3	1.27	0.97
1:A:410:HIS:CA	1:A:412:HIS:ND1	2.29	0.95

There are no symmetry-related clashes.

## 5.3 Torsion angles [i](#)

### 5.3.1 Protein backbone [i](#)

In the following table, the Percentiles column shows the percent Ramachandran outliers of the chain as a percentile score with respect to all X-ray entries followed by that with respect to entries of similar resolution.

The Analysed column shows the number of residues for which the backbone conformation was analysed, and the total number of residues.

Mol	Chain	Analysed	Favoured	Allowed	Outliers	Percentiles
1	A	703/705 (100%)	624 (89%)	58 (8%)	21 (3%)	<b>3</b> <b>8</b>

5 of 21 Ramachandran outliers are listed below:

Mol	Chain	Res	Type
1	A	495	PHE
1	A	633	ASP
1	A	634	GLY
1	A	368	GLY
1	A	414	SER

### 5.3.2 Protein sidechains [i](#)

In the following table, the Percentiles column shows the percent sidechain outliers of the chain as a percentile score with respect to all X-ray entries followed by that with respect to entries of similar resolution.

The Analysed column shows the number of residues for which the sidechain conformation was analysed, and the total number of residues.

Mol	Chain	Analysed	Rotameric	Outliers	Percentiles
1	A	585/575 (102%)	556 (95%)	29 (5%)	<b>22</b> 48

5 of 29 residues with a non-rotameric sidechain are listed below:

Mol	Chain	Res	Type
1	A	334	PRO
1	A	675	LEU
1	A	404	ASN
1	A	496	ASP
1	A	353	GLN

Sometimes sidechains can be flipped to improve hydrogen bonding and reduce clashes. 5 of 15

such sidechains are listed below:

Mol	Chain	Res	Type
1	A	310	ASN
1	A	520	ASN
1	A	328	GLN
1	A	592	ASN
1	A	410	HIS

### 5.3.3 RNA [i](#)

There are no RNA molecules in this entry.

## 5.4 Non-standard residues in protein, DNA, RNA chains [i](#)

There are no non-standard protein/DNA/RNA residues in this entry.

## 5.5 Carbohydrates [i](#)

9 monosaccharides are modelled in this entry.

In the following table, the Counts columns list the number of bonds (or angles) for which Mogul statistics could be retrieved, the number of bonds (or angles) that are observed in the model and the number of bonds (or angles) that are defined in the Chemical Component Dictionary. The Link column lists molecule types, if any, to which the group is linked. The Z score for a bond length (or angle) is the number of standard deviations the observed value is removed from the expected value. A bond length (or angle) with  $|Z| > 2$  is considered an outlier worth inspection. RMSZ is the root-mean-square of all Z scores of the bond lengths (or angles).

Mol	Type	Chain	Res	Link	Bond lengths			Bond angles		
					Counts	RMSZ	# $ Z  > 2$	Counts	RMSZ	# $ Z  > 2$
2	GP1	B	1	3,2	15,16,16	1.60	1 (6%)	24,24,24	1.21	1 (4%)
2	GP4	B	2	2	15,15,16	1.75	2 (13%)	20,22,24	1.42	2 (10%)
2	KDO	B	3	2	15,15,16	0.85	0	17,21,24	1.21	3 (17%)
2	GMH	B	4	2	13,13,14	0.85	0	16,18,20	0.94	1 (6%)
2	GPH	B	5	3,2	17,17,18	1.47	3 (17%)	24,25,27	1.41	4 (16%)
2	GLC	B	6	2	11,11,12	0.70	0	15,15,17	1.16	1 (6%)
2	GLA	B	7	2	11,11,12	0.66	0	15,15,17	1.04	1 (6%)
2	GLA	B	8	2	11,11,12	0.65	0	15,15,17	0.80	1 (6%)
2	KDO	B	9	2	15,15,16	0.67	0	17,21,24	1.09	2 (11%)

In the following table, the Chirals column lists the number of chiral outliers, the number of chiral

centers analysed, the number of these observed in the model and the number defined in the Chemical Component Dictionary. Similar counts are reported in the Torsion and Rings columns. '2' means no outliers of that kind were identified.

Mol	Type	Chain	Res	Link	Chirals	Torsions	Rings
2	GP1	B	1	3,2	-	3/6/27/27	0/1/1/1
2	GP4	B	2	2	-	0/7/24/27	0/1/1/1
2	KDO	B	3	2	-	0/10/26/30	0/1/1/1
2	GMH	B	4	2	-	0/6/23/26	0/1/1/1
2	GPH	B	5	3,2	-	0/11/28/31	0/1/1/1
2	GLC	B	6	2	-	0/2/19/22	0/1/1/1
2	GLA	B	7	2	-	2/2/19/22	0/1/1/1
2	GLA	B	8	2	-	1/2/19/22	0/1/1/1
2	KDO	B	9	2	-	2/10/26/30	0/1/1/1

The worst 5 of 6 bond length outliers are listed below:

Mol	Chain	Res	Type	Atoms	Z	Observed(Å)	Ideal(Å)
2	B	2	GP4	P4A-O4	-5.41	1.50	1.59
2	B	1	GP1	P4B-O1	-5.07	1.50	1.59
2	B	5	GPH	P1-O4	-3.78	1.52	1.59
2	B	2	GP4	C1-C2	2.97	1.55	1.52
2	B	5	GPH	O5-C5	2.59	1.46	1.43

The worst 5 of 16 bond angle outliers are listed below:

Mol	Chain	Res	Type	Atoms	Z	Observed(°)	Ideal(°)
2	B	1	GP1	P4B-O1-C1	-4.57	111.28	123.54
2	B	2	GP4	P4A-O4-C4	-4.11	112.45	123.43
2	B	5	GPH	P1-O4-C4	-4.01	112.72	123.43
2	B	2	GP4	C1-O5-C5	3.49	116.87	112.19
2	B	7	GLA	C1-O5-C5	3.47	116.83	112.19

There are no chirality outliers.

5 of 8 torsion outliers are listed below:

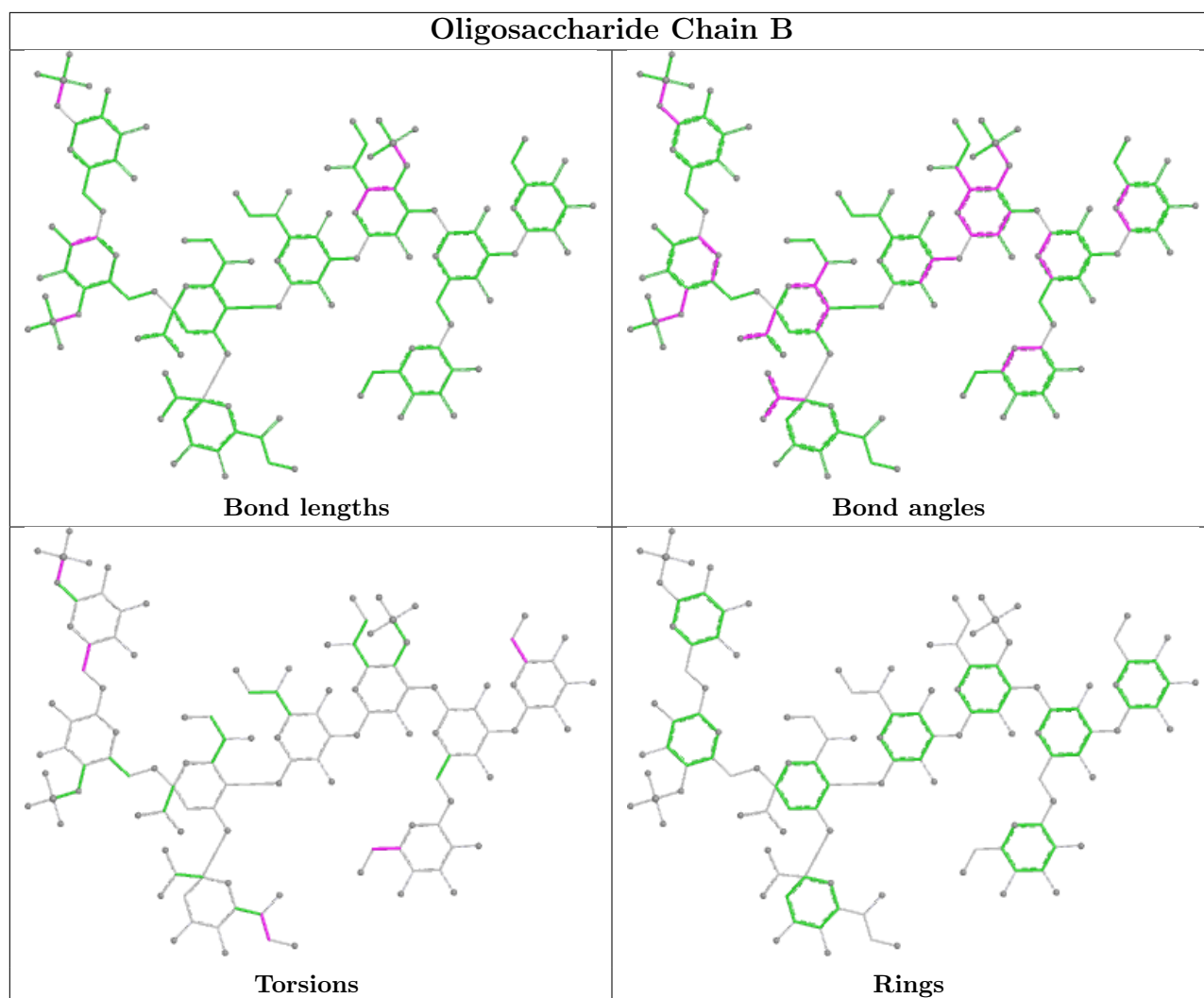
Mol	Chain	Res	Type	Atoms
2	B	1	GP1	C4-C5-C6-O6
2	B	1	GP1	O5-C5-C6-O6
2	B	9	KDO	C6-C7-C8-O8
2	B	9	KDO	O7-C7-C8-O8
2	B	7	GLA	C4-C5-C6-O6

There are no ring outliers.

3 monomers are involved in 4 short contacts:

Mol	Chain	Res	Type	Clashes	Symm-Clashes
2	B	6	GLC	4	0
2	B	5	GPH	1	0
2	B	8	GLA	3	0

The following is a two-dimensional graphical depiction of Mogul quality analysis of bond lengths, bond angles, torsion angles, and ring geometry for oligosaccharide.



## 5.6 Ligand geometry [i](#)

Of 8 ligands modelled in this entry, 2 are monoatomic - leaving 6 for Mogul analysis.

In the following table, the Counts columns list the number of bonds (or angles) for which Mogul statistics could be retrieved, the number of bonds (or angles) that are observed in the model and the number of bonds (or angles) that are defined in the Chemical Component Dictionary. The

Link column lists molecule types, if any, to which the group is linked. The Z score for a bond length (or angle) is the number of standard deviations the observed value is removed from the expected value. A bond length (or angle) with  $|Z| > 2$  is considered an outlier worth inspection. RMSZ is the root-mean-square of all Z scores of the bond lengths (or angles).

Mol	Type	Chain	Res	Link	Bond lengths			Bond angles		
					Counts	RMSZ	# Z  > 2	Counts	RMSZ	# Z  > 2
4	LIL	A	903	-	30,30,31	0.79	1 (3%)	31,31,33	1.09	1 (3%)
8	FCI	A	750	-	45,51,56	0.43	0	51,78,87	0.69	2 (3%)
7	EA2	A	1008	-	6,10,11	1.38	1 (16%)	8,13,16	0.88	1 (12%)
5	AAE	A	905	-	4,5,6	3.14	1 (25%)	5,5,7	2.81	3 (60%)
6	LIM	A	906	-	15,16,17	3.29	1 (6%)	15,16,18	2.49	4 (26%)
4	LIL	A	904	-	30,30,31	0.71	1 (3%)	31,31,33	1.20	3 (9%)

In the following table, the Chirals column lists the number of chiral outliers, the number of chiral centers analysed, the number of these observed in the model and the number defined in the Chemical Component Dictionary. Similar counts are reported in the Torsion and Rings columns. '-' means no outliers of that kind were identified.

Mol	Type	Chain	Res	Link	Chirals	Torsions	Rings
4	LIL	A	903	-	-	6/31/31/32	-
8	FCI	A	750	-	3/3/13/23	6/57/102/116	0/4/6/6
5	AAE	A	905	-	-	1/3/3/4	-
6	LIM	A	906	-	-	2/15/15/16	-
7	EA2	A	1008	-	-	1/8/10/11	-
4	LIL	A	904	-	1/1/2/3	4/31/31/32	-

All (5) bond length outliers are listed below:

Mol	Chain	Res	Type	Atoms	Z	Observed(Å)	Ideal(Å)
6	A	906	LIM	O2J-C3J	12.59	1.43	1.21
5	A	905	AAE	O8-C5	5.96	1.43	1.21
4	A	903	LIL	O2E-C1F	3.88	1.45	1.34
4	A	904	LIL	O2E-C1F	3.50	1.44	1.34
7	A	1008	EA2	P2-O7P	-2.48	1.49	1.59

The worst 5 of 14 bond angle outliers are listed below:

Mol	Chain	Res	Type	Atoms	Z	Observed(°)	Ideal(°)
6	A	906	LIM	O2J-C3J-C2J	-7.67	109.68	121.17
5	A	905	AAE	O8-C5-C9	-4.80	109.47	121.48
4	A	903	LIL	O2E-C1F-O1F	-4.38	113.46	123.70

*Continued on next page...*

*Continued from previous page...*

Mol	Chain	Res	Type	Atoms	Z	Observed(°)	Ideal(°)
6	A	906	LIM	O2J-C3J-C4J	-4.37	109.93	121.40
4	A	904	LIL	O2E-C1F-O1F	-4.10	114.13	123.70

All (4) chirality outliers are listed below:

Mol	Chain	Res	Type	Atom
4	A	904	LIL	C3E
8	A	750	FCI	N5
8	A	750	FCI	N8
8	A	750	FCI	N6

5 of 20 torsion outliers are listed below:

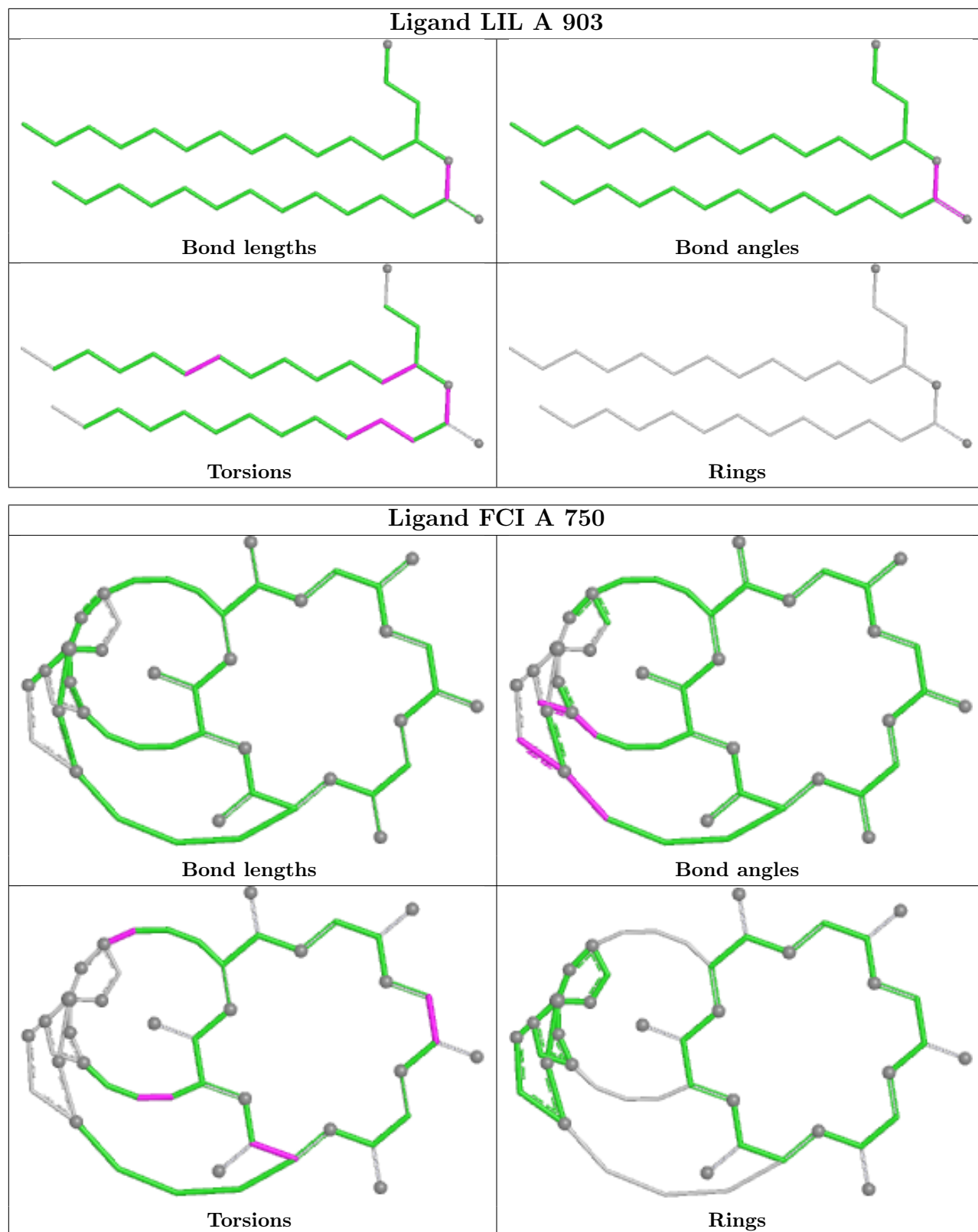
Mol	Chain	Res	Type	Atoms
4	A	903	LIL	O1F-C1F-O2E-C3E
4	A	903	LIL	C2F-C1F-O2E-C3E
8	A	750	FCI	C24-C16-C7-O7
8	A	750	FCI	C25-C30-N5-C3
8	A	750	FCI	C24-C16-C7-N3

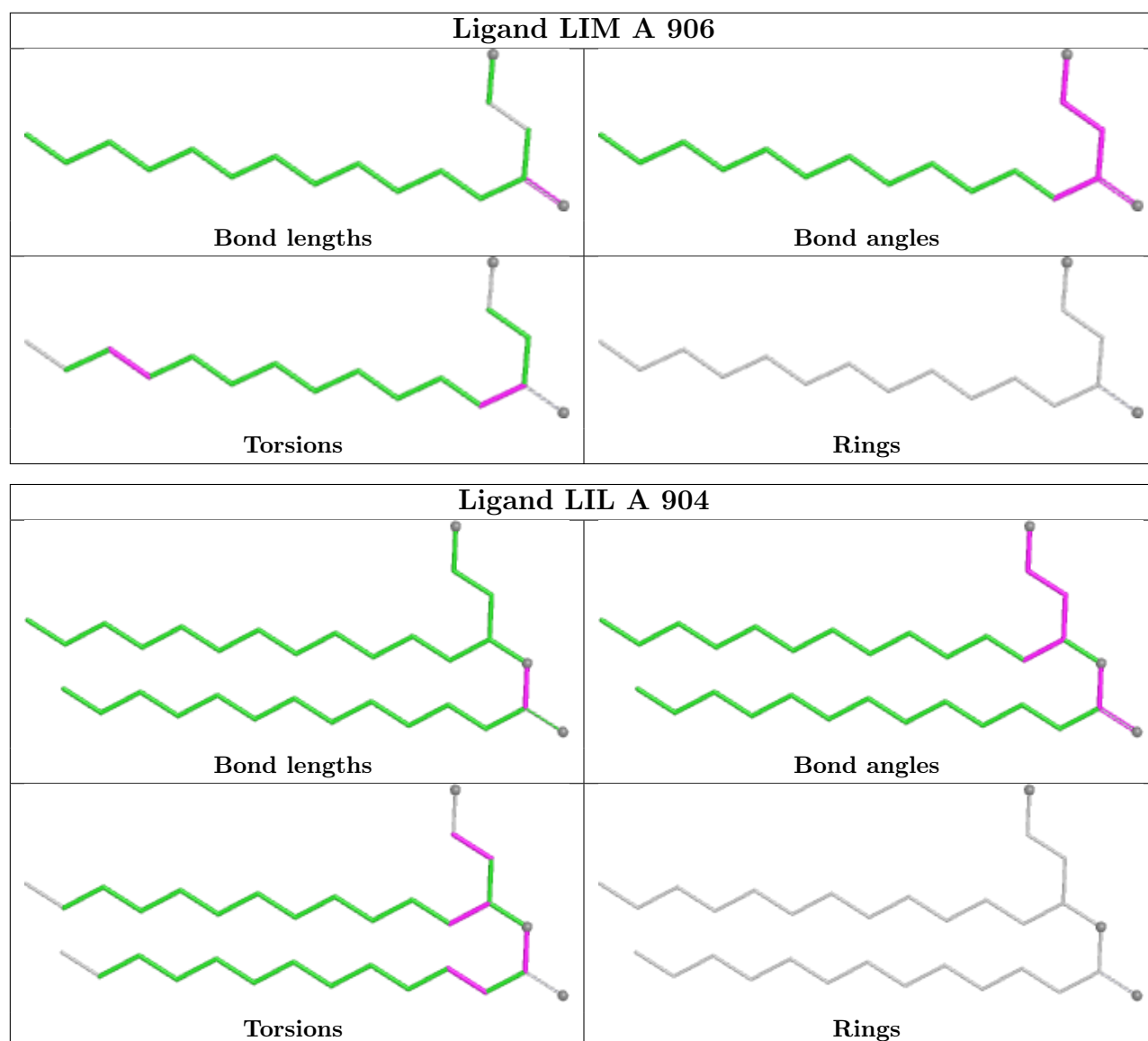
There are no ring outliers.

4 monomers are involved in 20 short contacts:

Mol	Chain	Res	Type	Clashes	Symm-Clashes
4	A	903	LIL	11	0
8	A	750	FCI	2	0
6	A	906	LIM	6	0
4	A	904	LIL	8	0

The following is a two-dimensional graphical depiction of Mogul quality analysis of bond lengths, bond angles, torsion angles, and ring geometry for all instances of the Ligand of Interest. In addition, ligands with molecular weight > 250 and outliers as shown on the validation Tables will also be included. For torsion angles, if less than 5% of the Mogul distribution of torsion angles is within 10 degrees of the torsion angle in question, then that torsion angle is considered an outlier. Any bond that is central to one or more torsion angles identified as an outlier by Mogul will be highlighted in the graph. For rings, the root-mean-square deviation (RMSD) between the ring in question and similar rings identified by Mogul is calculated over all ring torsion angles. If the average RMSD is greater than 60 degrees and the minimal RMSD between the ring in question and any Mogul-identified rings is also greater than 60 degrees, then that ring is considered an outlier. The outliers are highlighted in purple. The color gray indicates Mogul did not find sufficient equivalents in the CSD to analyse the geometry.





## 5.7 Other polymers [i](#)

There are no such residues in this entry.

## 5.8 Polymer linkage issues [i](#)

There are no chain breaks in this entry.

## 6 Fit of model and data [i](#)

### 6.1 Protein, DNA and RNA chains [i](#)

In the following table, the column labelled '#RSRZ > 2' contains the number (and percentage) of RSRZ outliers, followed by percent RSRZ outliers for the chain as percentile scores relative to all X-ray entries and entries of similar resolution. The OWAB column contains the minimum, median, 95<sup>th</sup> percentile and maximum values of the occupancy-weighted average B-factor per residue. The column labelled 'Q < 0.9' lists the number of (and percentage) of residues with an average occupancy less than 0.9.

Mol	Chain	Analysed	<RSRZ>	#RSRZ>2	OWAB(Å <sup>2</sup> )	Q<0.9
1	A	695/705 (98%)	0.44	36 (5%) 33 29	31, 62, 94, 113	0

The worst 5 of 36 RSRZ outliers are listed below:

Mol	Chain	Res	Type	RSRZ
1	A	412	HIS	8.4
1	A	23	GLY	5.0
1	A	403	TYR	4.9
1	A	566	PHE	4.8
1	A	404	ASN	4.2

### 6.2 Non-standard residues in protein, DNA, RNA chains [i](#)

There are no non-standard protein/DNA/RNA residues in this entry.

### 6.3 Carbohydrates [i](#)

In the following table, the Atoms column lists the number of modelled atoms in the group and the number defined in the chemical component dictionary. The B-factors column lists the minimum, median, 95<sup>th</sup> percentile and maximum values of B factors of atoms in the group. The column labelled 'Q < 0.9' lists the number of atoms with occupancy less than 0.9.

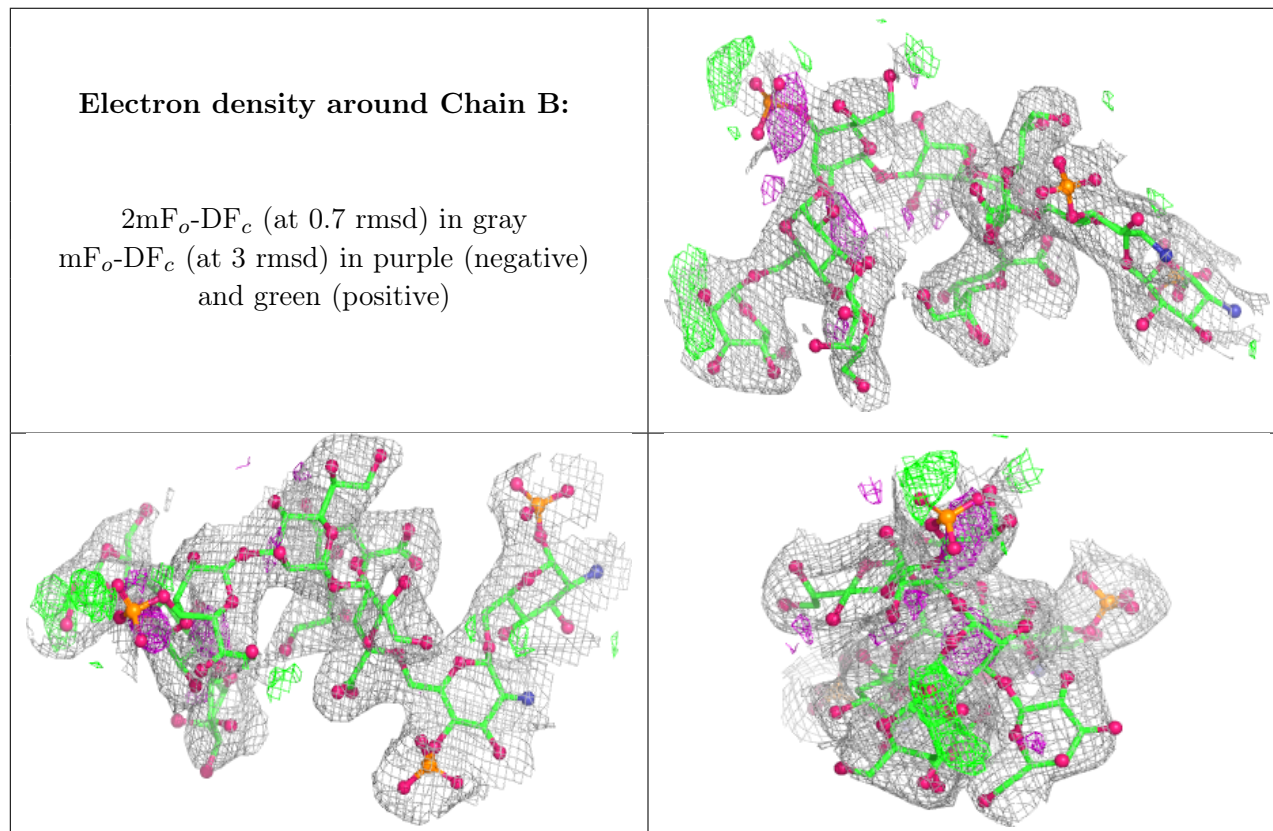
Mol	Type	Chain	Res	Atoms	RSCC	RSR	B-factors(Å <sup>2</sup> )	Q<0.9
2	GLA	B	8	11/12	0.63	0.17	81,91,107,107	0
2	GLA	B	7	11/12	0.75	0.15	74,96,110,120	0
2	GPH	B	5	17/18	0.77	0.17	55,82,120,120	0
2	GLC	B	6	11/12	0.81	0.15	74,83,102,110	0
2	KDO	B	9	15/16	0.90	0.09	49,64,80,85	0
2	GP1	B	1	16/16	0.93	0.08	50,63,90,103	0
2	GMH	B	4	13/14	0.94	0.09	43,59,80,83	0

*Continued on next page...*

Continued from previous page...

Mol	Type	Chain	Res	Atoms	RSCC	RSR	B-factors( $\text{\AA}^2$ )	Q<0.9
2	KDO	B	3	15/16	0.95	0.07	45,59,70,92	0
2	GP4	B	2	15/16	0.96	0.07	32,46,71,73	0

The following is a graphical depiction of the model fit to experimental electron density for oligosaccharide. Each fit is shown from different orientation to approximate a three-dimensional view.



## 6.4 Ligands [i](#)

In the following table, the Atoms column lists the number of modelled atoms in the group and the number defined in the chemical component dictionary. The B-factors column lists the minimum, median, 95<sup>th</sup> percentile and maximum values of B factors of atoms in the group. The column labelled 'Q< 0.9' lists the number of atoms with occupancy less than 0.9.

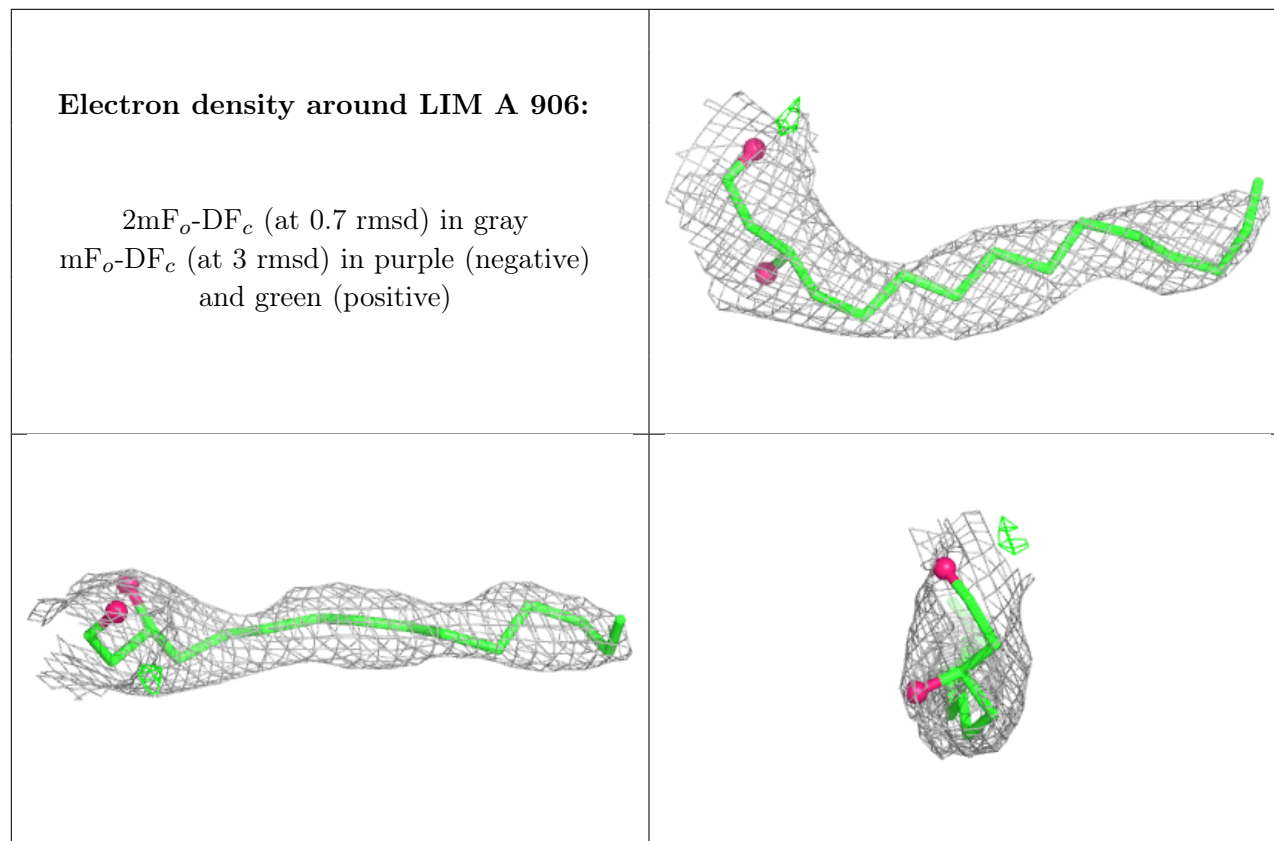
Mol	Type	Chain	Res	Atoms	RSCC	RSR	B-factors( $\text{\AA}^2$ )	Q<0.9
5	AAE	A	905	6/7	0.73	0.23	75,80,86,107	0
7	EA2	A	1008	11/12	0.88	0.15	52,109,120,120	0
6	LIM	A	906	17/18	0.90	0.18	54,65,82,97	0
4	LIL	A	903	31/32	0.90	0.19	48,78,93,96	0
4	LIL	A	904	31/32	0.94	0.14	48,59,76,83	0
3	NI	A	1012	1/1	0.96	0.09	113,113,113,113	0

Continued on next page...

Continued from previous page...

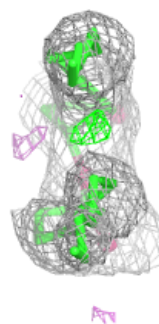
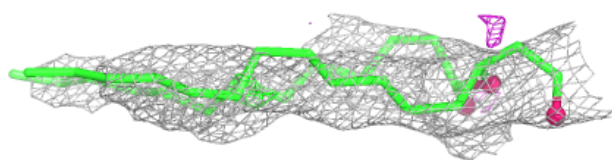
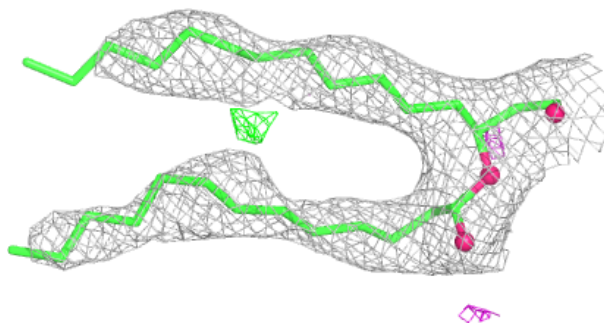
Mol	Type	Chain	Res	Atoms	RSCC	RSR	B-factors( $\text{\AA}^2$ )	Q<0.9
3	NI	A	1011	1/1	0.96	0.07	98,98,98,98	0
8	FCI	A	750	46/51	0.97	0.08	21,47,64,69	0

The following is a graphical depiction of the model fit to experimental electron density of all instances of the Ligand of Interest. In addition, ligands with molecular weight > 250 and outliers as shown on the geometry validation Tables will also be included. Each fit is shown from different orientation to approximate a three-dimensional view.

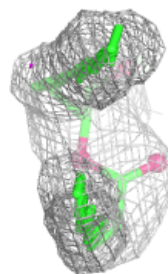
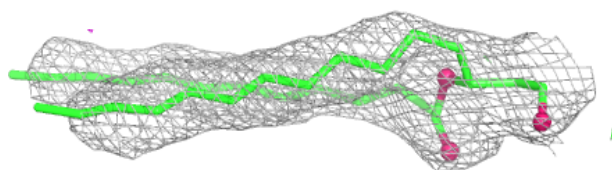
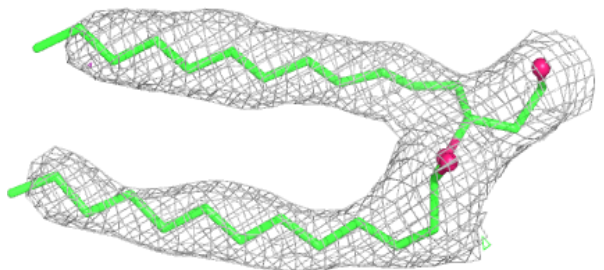


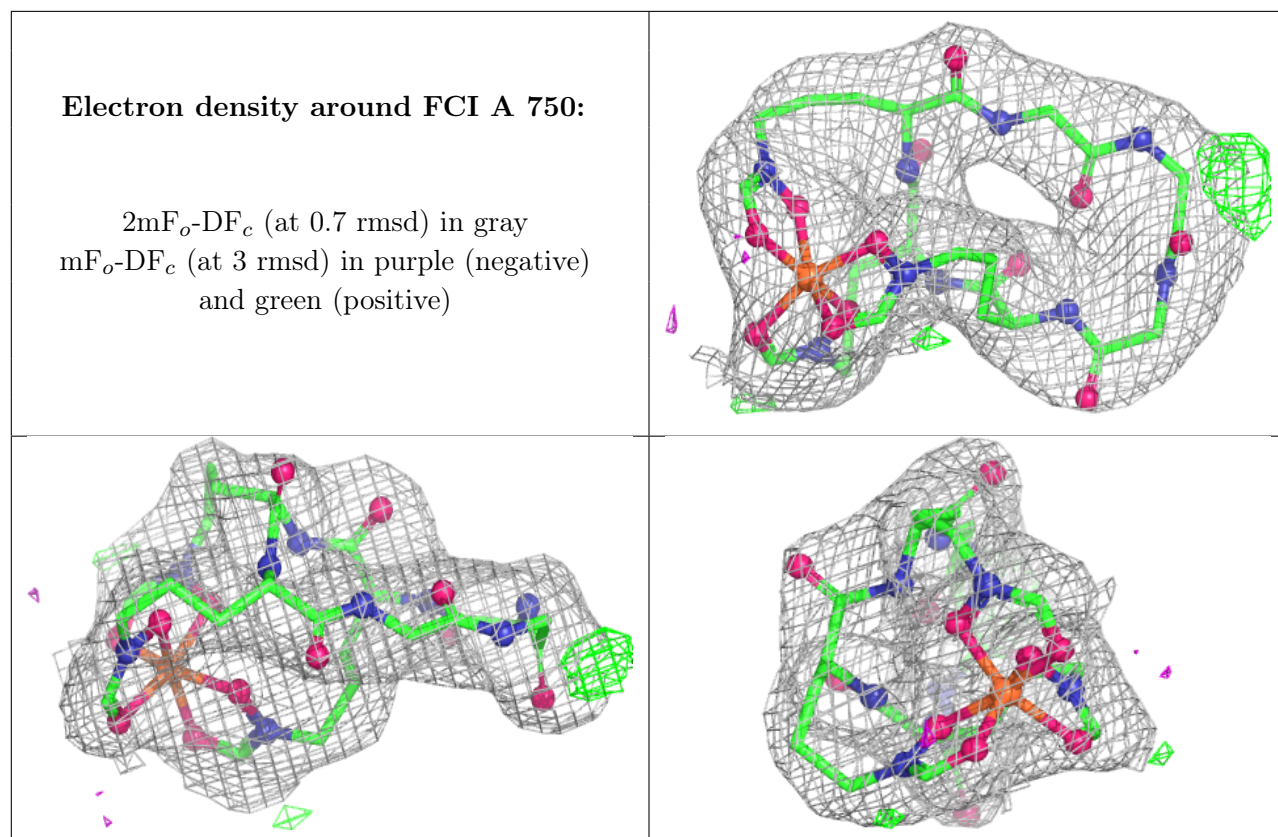
**Electron density around LIL A 903:**

$2mF_o-DF_c$  (at 0.7 rmsd) in gray  
 $mF_o-DF_c$  (at 3 rmsd) in purple (negative)  
and green (positive)

**Electron density around LIL A 904:**

$2mF_o-DF_c$  (at 0.7 rmsd) in gray  
 $mF_o-DF_c$  (at 3 rmsd) in purple (negative)  
and green (positive)





## 6.5 Other polymers [i](#)

There are no such residues in this entry.